



LAFAYETTE PLAYGROUND AND ELEMENTARY SCHOOL



PROJECT UPDATES

July 8, 2014



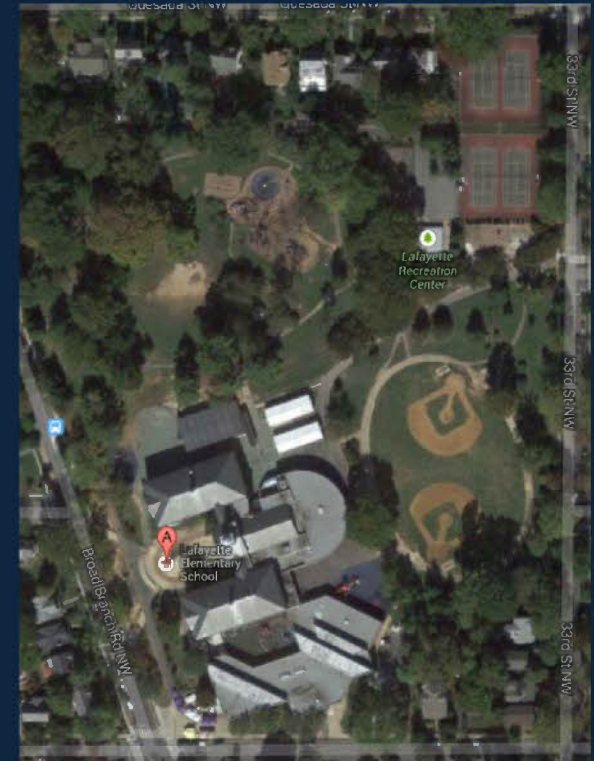


MEETING AGENDA

- Rules of the Road
- Introduction and Overview of DGS
- Playground and School Joint Overview
- Lafayette Playground Project Update
- Lafayette Elementary School Modernization Update
- Next Steps

PLAYGROUND AND SCHOOL PROJECT COLLABORATION

- Continuous discussion between DGS project managers and design teams
- Construction schedule sequencing
 - Playground (July 2014 – Oct 2014)
 - School (June 2015 – Aug 2016)
- Staging area considerations
- Preliminary investigative efforts
- Consolidation of resources
- Economies of scale
- School work will not undo any park work!



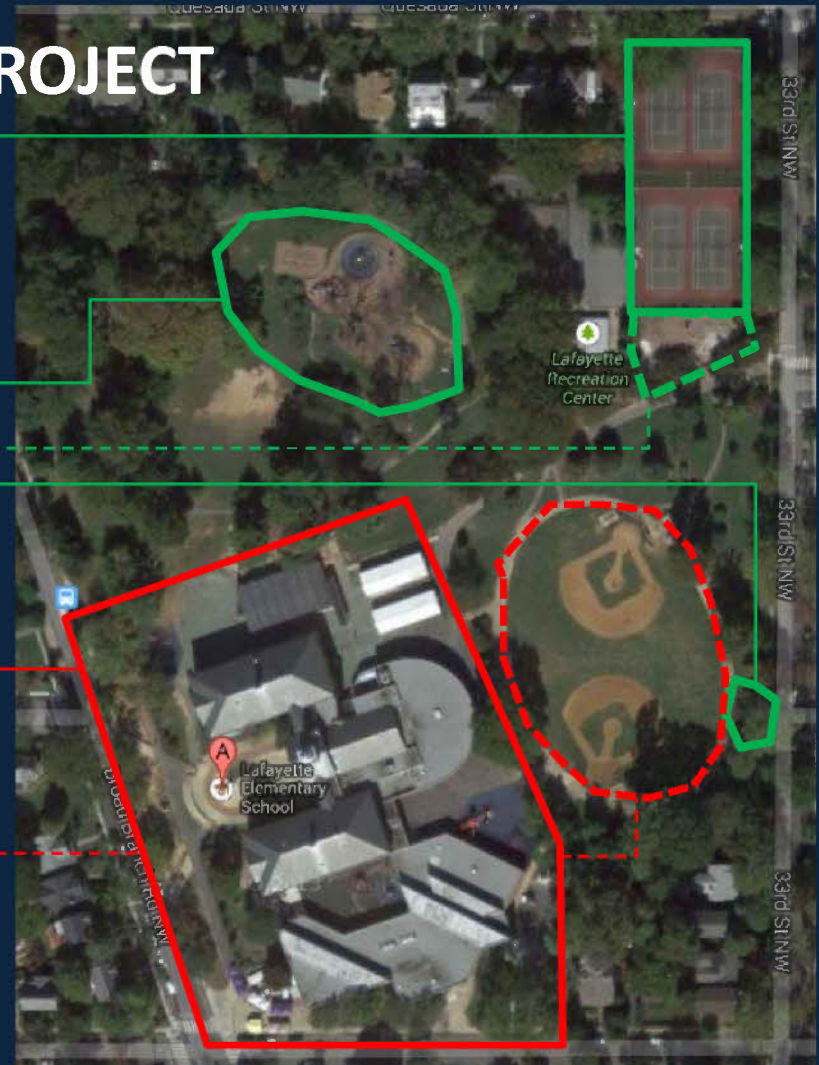
PLAYGROUND AND SCHOOL PROJECT AERIAL VIEW

PLAYGROUND (July – Oct 2014)

1. Resurface Tennis Courts
2. New playground
3. Potential Rec Center Expansion
4. Address Erosion Issues

SCHOOL

1. Full modernization of School Building
2. Potential Geothermal Well Field for School HVAC System (requires field replacement)





PLAYGROUND AND SCHOOL PROJECT PROJECT VITALS

- **Lafayette Playground**
 - Budget: \$1.5-million
 - Design Schedule: April 2014 – July 2014
 - Construction Timeline: July 2014 – October 2014

- **Lafayette Elementary School**
 - Budget: \$47.6-million
 - Design Schedule: June 2014 – June 2015
 - Construction Timeline: June 2015 – August 2016



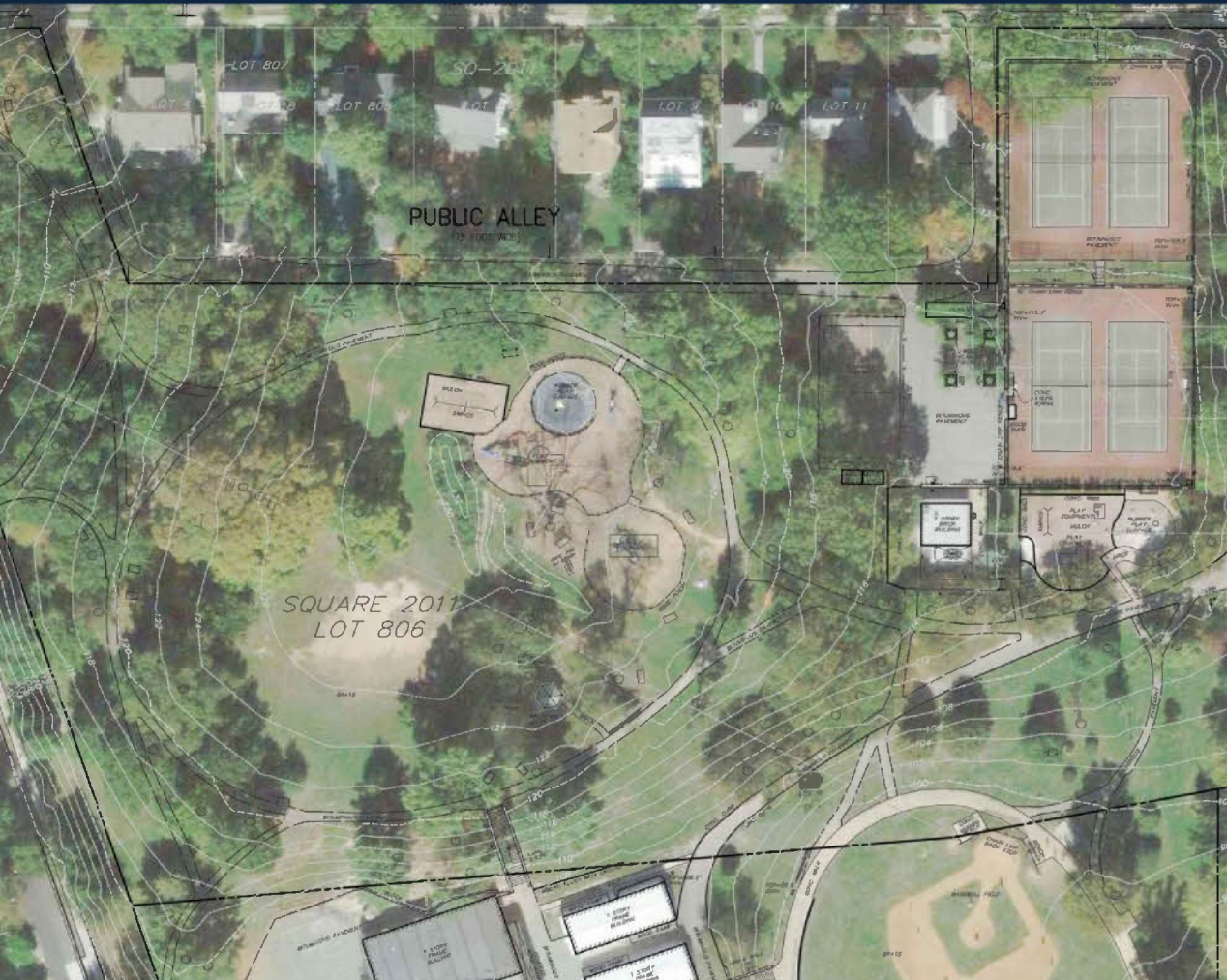
LAFAYETTE PLAYGROUND SCOPE

□ Proposed Renovations and Amenities

- ✓ Restored natural grass
- ✓ New playground equipment and surfacing
- ✓ Resurfacing, repair of basketball and tennis courts
- ✓ Repaired walkways and ADA accessibility
- ✓ Resolve Erosion Issue



SITE OVERVIEW



Site Analysis

- Existing trees provide great benefit and in overall good condition, could benefit from modest pruning
- Lush planting beds at park edge are unique feature to be maintained
- Upper field has “bald” spot, needs renovating
- Pathways in poor condition, many are not accessible
- Play areas well used, need updating for accessibility

Community input – To Date

- Initial Community Meeting, April 30th
 - Online Survey
- Concept Presentation Community Meeting, June 9th
 - Online Survey
- Concept Presentation to Lafayette Elementary Student Council 5th Grade Representatives, June 17th





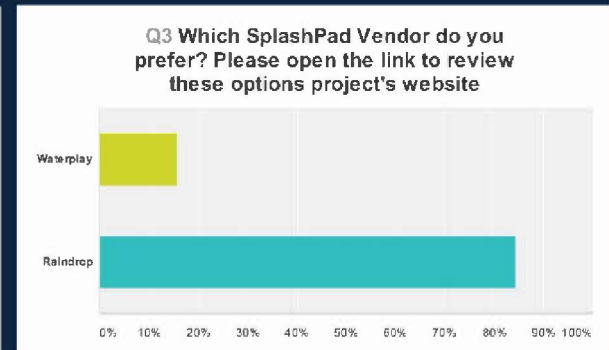
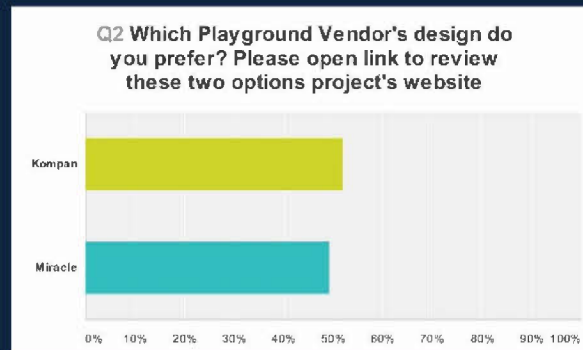
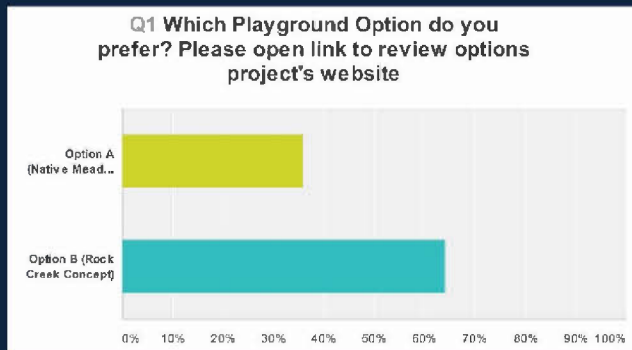
Community input – what we heard

- Natural features and maintenance of open space is appreciated
- A fence should be used to strategically restrict park access from alley
- Tot lot should be moved for easier parent supervision
- Swings and sandbox are desired
- No additional pavilion is needed

ROCK CREEK CONCEPT was the preferred park layout concept

KOMPAN was the preferred playground equipment

RAINDROP was the preferred splash pad equipment





FINAL CONCEPT

ROCK CREEK

Rock Creek Concept

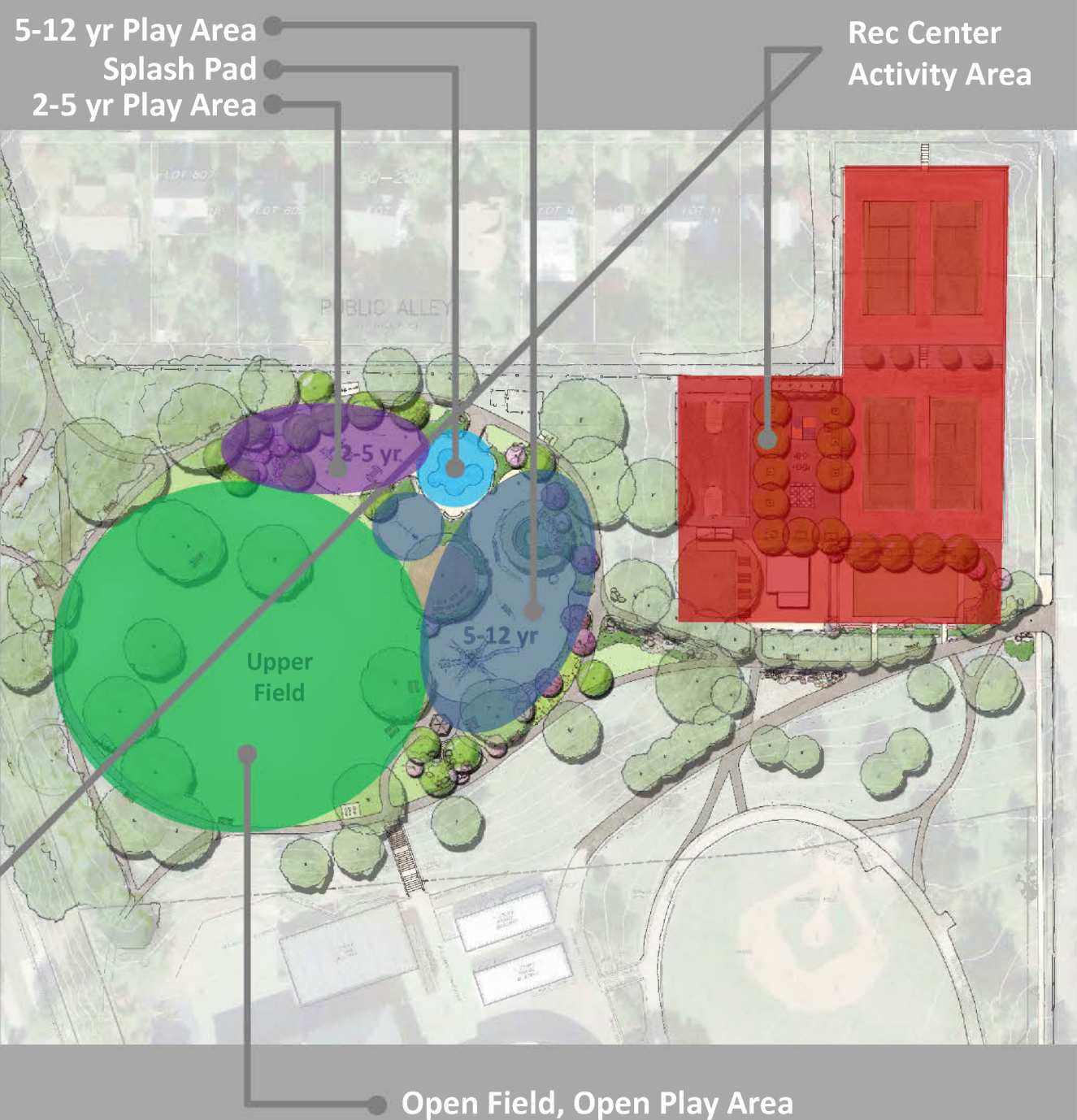
QUESADA ST, NW



LAFAYETTE PLAYGROUND

ROCK CREEK CONCEPT | WASHINGTON, D.C.





Consolidated Spaces

- ❑ 2-5 yr area is moved uphill to consolidate major play areas
- ❑ Allows for easier supervision of age groups
- ❑ Age groups are separated by landscape and splash pad for safety
- ❑ Open to upper field for fluid play spaces
- ❑ Previous 2-5 space is converted to open lawn for Rec. Center activities, outdoor classes, and events
- ❑ New pavilion is central to play spaces for events, shade, family picnics
- ❑ Existing gazebo renovated and incorporated by pathways and landscape

Native plants in landscape and rain gardens



Stepping stones are fun paths for added nature experience



Stormwater overflows into "dry creek bed" feature



Boulders in landscape

Rock Creek Theme

- ❑ Stormwater runoff is captured in rain gardens ringing the play areas
- ❑ Overflow water in heavy events feeds into "dry creek" swale adjacent entry walk
- ❑ Boulders add accents in the landscape, stepping stones provide informal connections and nature-based play space
- ❑ Native plants provide wildlife benefits, educational opportunities, low maintenance requirements and stormwater cleansing





Open to field



Plants with texture



Semi-open playhouse



Birdhouses



Plants with fun shapes



Plants with seasonal interest



Explore nature together



Stepping stones through natural areas



Changes in topography



Shaded benches for caregivers

2-5 Year Play Area

- ❑ Playground is located close to other playground features for ease of oversight by caregivers
- ❑ Pavilion, splash pad, and landscape beds of native plants help define space and separate from older play area
- ❑ Proximity to splash pad and pavilion create central play area
- ❑ Careful landscape design enriches play experiences and provides shade
- ❑ Playhouse in natural area allows for quiet play and pretend play





Plants with seasonal interest



Bridge entrance over rain garden



Rain garden rings play area



Existing trees saved



Outdoor Classroom



Stepping stones through natural areas



Boulders in landscape on hillside



Concrete seat walls

5-12 Year Play Area

- Shape creates unique play spaces
- Existing trees area saved and celebrated; new trees located to provide maximum shade
- Outdoor Classroom
- Concrete seat walls
- Stepping stone path through planted areas
- Rain garden rings outer edge, bringing nature and native plantings close to play areas
- Existing gazebo is renovated and incorporated



Central Gathering Spaces

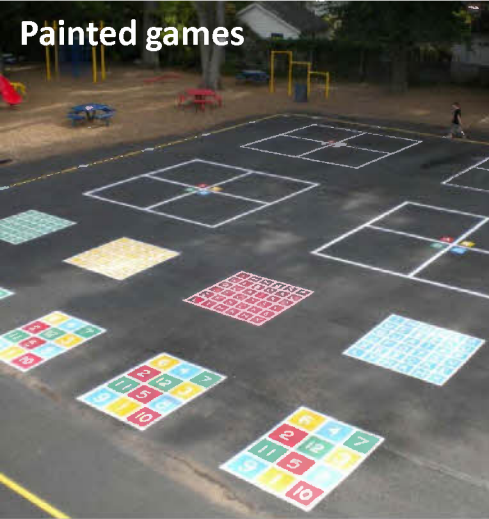
- ❑ Existing gazebo renovated and incorporated by pathways and landscape
- ❑ Outdoor Classroom for school and rec center classes and activities
- ❑ Benches added in shade around play areas
- ❑ Amphitheater and lawn for classes, activities and events
- ❑ Painted games in open area ringed by chess tables and benches, with new trees for shade



Existing gazebo renovated and incorporated

Picnic Tables

Outdoor Classroom



Painted games



Painted games

Rec. Center Activity Area

- Rec. Center area renovated to improve usability and flexibility
- Sport courts resurfaced/repaired
- Play court is redesigned to maximize play opportunities and flexibility
- Painted games maximize play without sacrificing open space
- Chess tables located between trees
- Tennis practice backboard added
- Trees are added for shade



New trees provide shade



Painted trike track



Chess tables relocated



Practice backboard



Resurfaced sport courts





Fitness stations

Multigenerational

- ❑ Adult exercise equipment spread out in multiple stations
- ❑ Stations located around outer pathway around upper field and play areas, creating a “fitness trail”



Fitness trail



Fence at park edge

Resurfaced Tennis and Basketball Courts

Additional Features

- Existing tennis and basketball courts repaired and resurfaced
- Fence at park edge added to prevent alley use
- Upper field repaired as a natural lawn space
- Walkways repaired and accessibility improved
- Entry traffic restricted with a lockable, removable bollard
- Erosion addressed through repair and runoff control

Ex Trees Saved When Possible
Trees Added for Shade



Upper Field

2-5 yr.

5-12 yr.

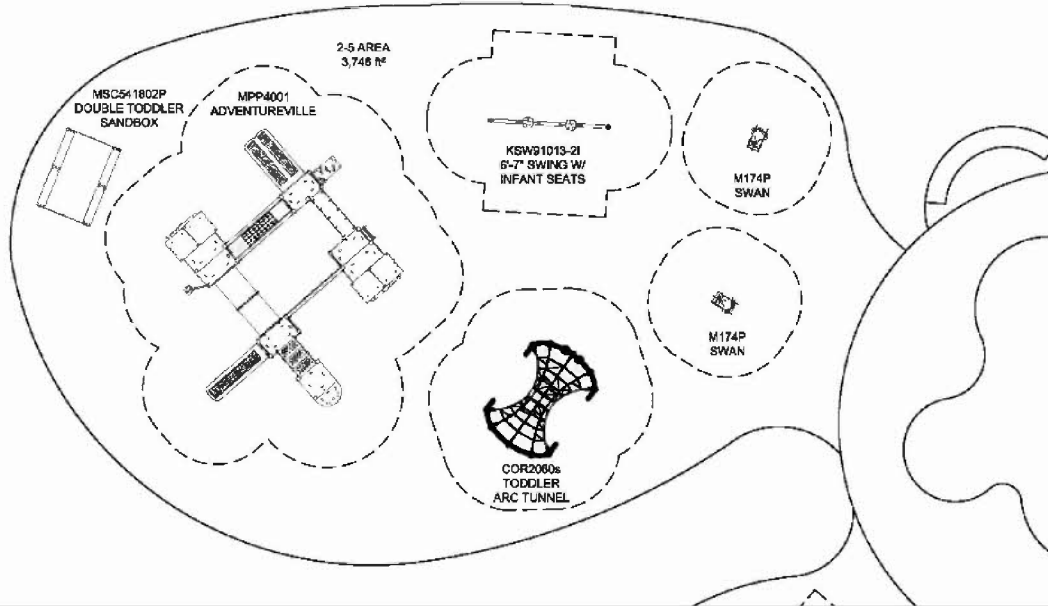
Repaired Upper Field

Walkways Repaired, Accessibility Improved
Eroded Areas Repaired

Entry Traffic Restricted



PLAY EQUIPMENT --- KOMPAN



2-5 yr Play Area

KOMPAN

- Adventureville Jungle Gym
- Swings
- Toddler Arc Tunnel
- Sandbox
- Swan Spring Feature

ADDITIONAL PLAY FEATURES

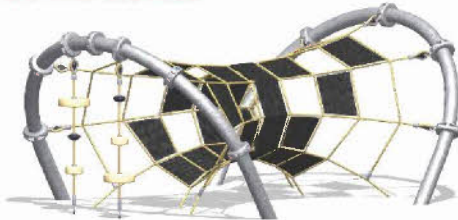
- Natural Play Area
- Playhouse

Lafayette Park

2-5 Year Old Area



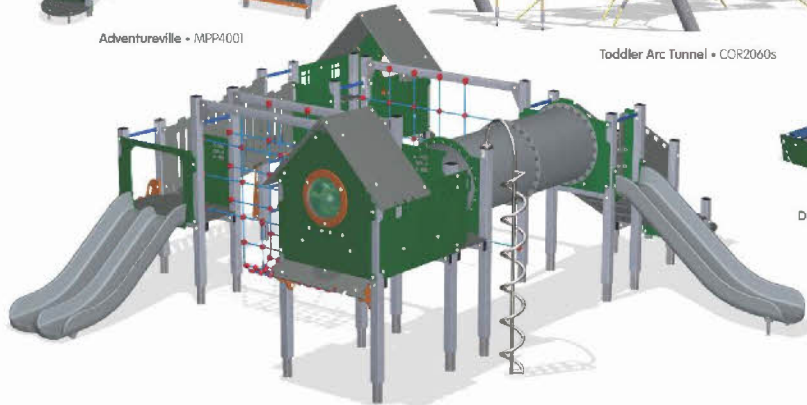
Adventureville - MPP4001



Toddler Arc Tunnel - COR2060s



Swan - M174P



Double Toddler Sandbox - MSC541802P



2-5 yr Play Area



5-12 yr Play Area





SPLASH PAD --- RAINDROP



Splash Pad:

RAINDROP

- Rain Tree
- Water curtain
- Water Tunnel
- Water jets
- Bubblers
- Animal sculptures





NEXT STEPS

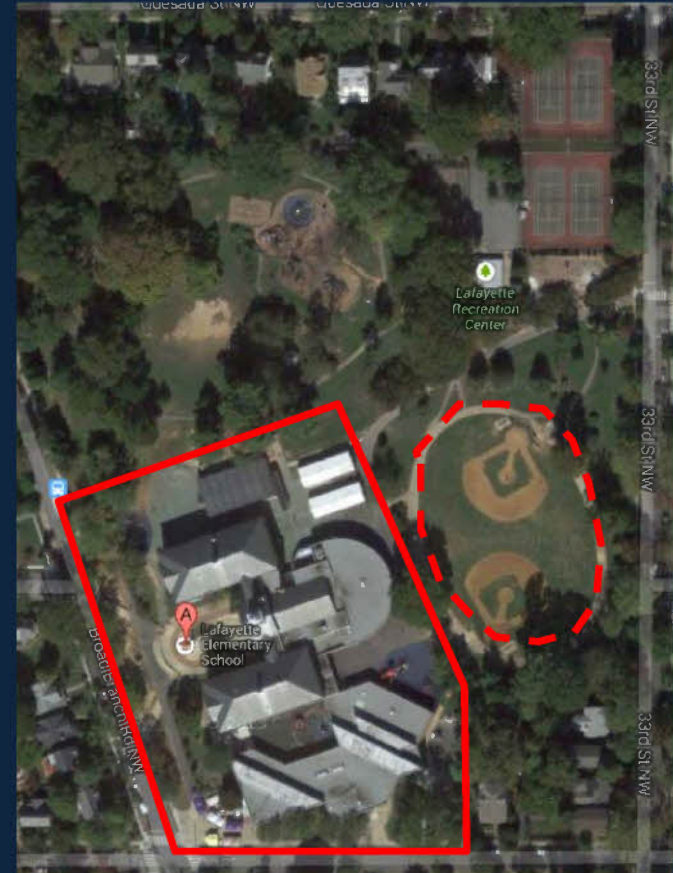
- Landscape Architect procured for Concept Design April 2014
- Community Input Meeting April 30, 2014
- Concept Design May- June 2014
- Concept Design Presentation June 9, 2014
- Presentation to Elementary School Student Council June 17, 2014
- Final Concept Design Presentation July 8, 2014
- Permits and Construction August to November 2014



LAFAYETTE ELEMENTARY SCHOOL MODERNIZATION

LAFAYETTE ES MODERNIZATION - OVERVIEW

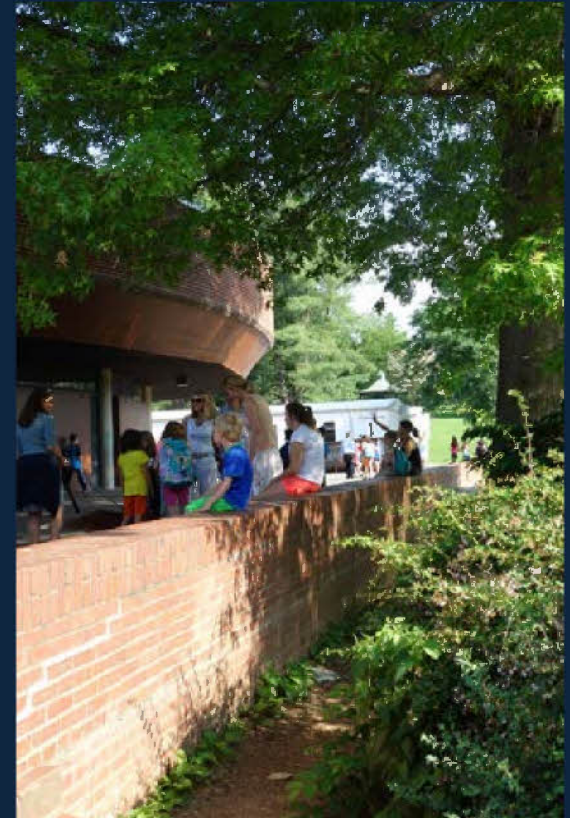
- Part of \$3.2-billion, 10-year DCPS School Modernization Program started in 2007
- Full modernization approach is expected to increase the building square footage from 96,000 SF to 120,000 SF to accommodate up to 835 students.*
- Project budget: \$47.6-million to include all construction, design, furniture, and provisions of swing space.
- Construction targeted to begin June 2015 and finish by August 2016.
- DGS and DCPS engaging with School Improvement Team since March 2014.



* Based on architect survey of existing building and updated Ed Spec document.

LAFAYETTE ES MODERNIZATION INITIAL DESIGN CONSIDERATIONS

- Support the educational program, curriculum, and collaborative feel of Lafayette ES.
- Restore the historic 1930's schoolhouse building. Likely demolish the 1970's additions to create a new, more efficient addition.
- Uphold the harmonious design and relationship with Lafayette Park.
- Improve access for deliveries, student drop-off, and pick-up.
- Create more parking onsite to reduce street parking.



LAFAYETTE ES MODERNIZATION INITIAL DESIGN CONSIDERATIONS

- All DCPS projects must meet USGBC LEED Gold Standards for environmentally sustainable design.
- Larger capacity means larger spaces for Gym, Cafeteria, Auditorium, and Library.
- Create natural access points for after-school activities in areas such as Aftercare Program and rec sports in the Gym.
- Create a more organized flow of foot-traffic for visitors to enhance building security.



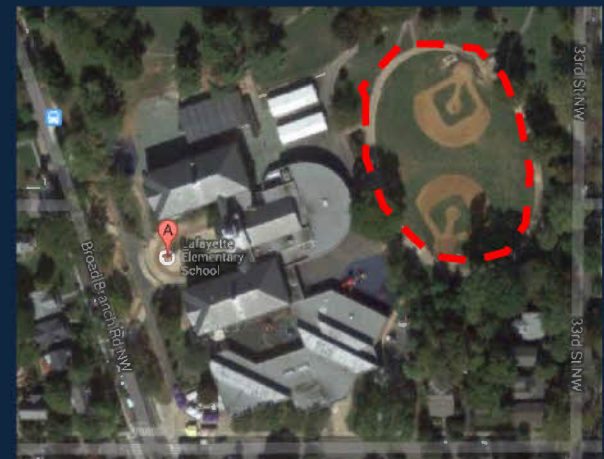
LAFAYETTE ES MODERNIZATION INITIAL DESIGN CONSIDERATIONS

- Preserve the amount of play space currently on school grounds.
- Coordinate site lighting with local ANC lighting task force.
- Coordinate site design with potential future park work & FOLP master plan.
- Limit noise from HVAC equipment to the surrounding community.
- Design and implement a “swing plan” that best suits the needs of the school and the project...



LAFAYETTE ES MODERNIZATION POTENTIAL IMPACTS TO BALLFIELDS (TRAILERS)

- Swing Plan for SY15-16 will require added trailers to house students during project.
- Team is analyzing options to either place 100% of students and staff in trailers or a lesser percentage (by keeping the historical building in use during SY15-16).
 - Costs
 - Learning Environment
 - Security and Safety
 - Site Logistics
 - Maintaining outdoor play space
- Any grounds disturbed would be restored once trailers are removed.



LAFAYETTE ES MODERNIZATION POTENTIAL IMPACTS TO BALLFIELDS (GEOTHERMAL)

- A more energy-efficient, noise-reducing HVAC approach would require drilling geothermal wells on the fields.
- Work would take fields offline for several months – likely during winter months (starting in November 2014).
- Final decision requires testing conductivity and groundwater quality of soil beneath fields and development of building design.
- If advanced, ballfields would be completely rebuilt at end of project.



LAFAYETTE ES MODERNIZATION ONGOING EFFORTS

- Traffic survey completed in June.
- Civil site survey to analyze site dimensions and topography.
- Design Charrette meeting with School Improvement Team (SIT) to develop design concept.
- **UPCOMING:** Geotechnical test borings around school and ballfields for investigative purposes (efforts being coordinated with day camp and little league baseball).



LAFAYETTE ES MODERNIZATION GOING FORWARD

- Collaboration with SIT is greatest during Concept and Schematic Design phases (through October 2014).
- Design Development and builder selection to occur Fall 2014.
- 100% Design and permitting to occur during Spring 2015.
- School construction to begin June 2015 and complete by August 2016.
- Continuous engagement with SIT and Community throughout.



LAFAYETTE ES MODERNIZATION CONSTRUCTION CONSIDERATIONS

- **Construction Timeline: June 2015 – August 2016**
- **Standard work hours: MON-SAT, 7am-7pm**
- **Construction worker parking – look into offsite parking.**
- **Construction deliveries to adhere to DDOT-approved truck routing plans.**
- **DGS will photo-document preconstruction conditions of adjacent roads and properties prior to start of construction.**
- **DGS will meet regularly with “Neighbor Group” of homes closest to construction to address any concerns or impacts.**



PLAYGROUND AND SCHOOL PROJECT NEXT STEPS

Park

- Neighbor Meeting: Early August
- Preconstruction Community Meeting: Mid August

School

- SIT Meeting: July 12, 2014
- Community Meeting: October 2014
- Begin Neighbor Meetings: Fall 2014 (if geothermal work advances) or Winter 2015



Contact Information

Kenny Diggs

DGS Director of Government Affairs and Communications

kenneth.diggs@dc.gov



Like us!
@ Department of General Services (DGS)



Follow us!
@ DCDGS





QUESTIONS / FEEDBACK



Like us!
@ Department of General Services (DGS)



Follow us!
@ DCDGS

