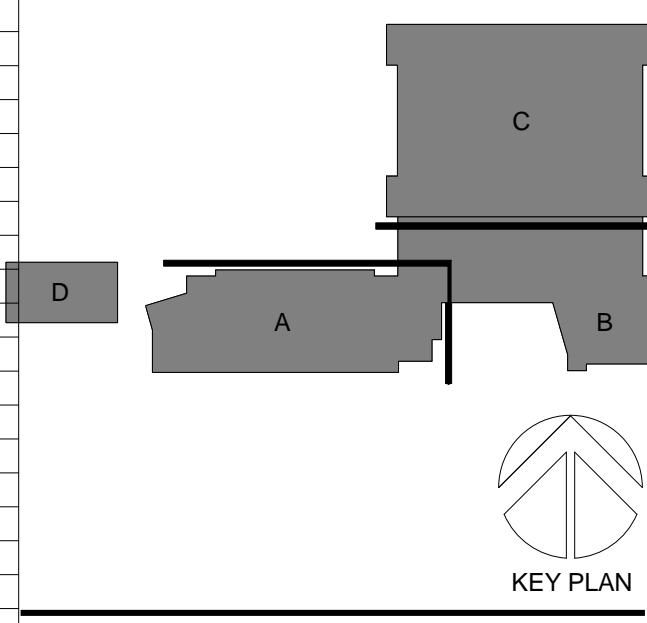


MATERIALS & EQUIPMENT LEGEND			MATERIALS & EQUIPMENT LEGEND			MATERIALS & EQUIPMENT LEGEND		
NOTE	SPEC	MATERIAL	NOTE	SPEC	MATERIAL	NOTE	SPEC	MATERIAL
AB-1	07 2700	AIR BARRIER	EXP-1	05 1200	EXPOSED STRUCTURE	MM-1	04 0514	MORTAR NET
AC-1	08 3100	3" X 3" CEILING ACCESS PANEL	EXP-2	05 1100	1/2" EXPOSED ACOUSTICAL DECK	MP-1	07 4243	ALUMINUM PLATE OR COMPOSITE PANEL SYSTEM (ALUM PLATE BELOW "A" AFF)
AC-2	08 3100	2" X 3" 90 MIN ACCESS PANEL	EXP-3	05 3100	3" EXPOSED ACOUSTICAL DECK	MP-2	07 4243	PERFORATED ALUMINUM PLATE PANEL W/ TECTUM PLATING
AC-3	08 3100	18" X 18" WALL ACCESS PANEL	FAK		FIRST AID KIT	MP-1A	07 4242	INSULATED METAL WALL PANEL SYSTEM (LEGEND FOR TYPE AND COLOR)
ACT-3	09 5100	ACOUSTIC CEILING TILE - 2X2'	FAC		FIRE BLANKET AND CASE	MS-3	05 4000	GALV METAL STUD AT EXTERIOR
ACT-4	09 5100	ACOUSTIC CEILING TILE - 2X2' - WASHABLE	FBC	10 4400	FIRE EXTINGUISHER CABINET	MS-2	05 4000	GALV METAL STUD AT EXTERIOR BRICK VENER (600 MAX DEFLECTION)
ACT-5	09 5100	ACOUSTIC CEILING TILE - 2X2' - WASHABLE	FHC	10 4400	FIRE HOSE CABINET	MS-2	08 8000	1/2" FLIGHT MIRROR
ACT-6	09 5100	ACOUSTIC CEILING TILE - 2X2' - WASHABLE	FL-1	07 6200	STAINLESS STEEL MEMBRANE OR THROUGH WALL FLASHING	FL-2	07 6200	SILL FLASHING, STAINLESS STEEL FLASHING W/ STANDING SEAMS
ACT-7	09 5100	ACOUSTIC CEILING TILE - 2X2' - WASHABLE	FL-2	07 6200	SILL FLASHING, STAINLESS STEEL FLASHING W/ STANDING SEAMS	FL-3	07 6200	STAINLESS STEEL CONTER FLASH DRIP EDGE/CAP FLASHING
ACT-8	09 5100	ACOUSTIC CEILING TILE - 2X2' - WASHABLE	FP-1	07 8100	SPRAY APPLIED FIRE PROOFING	FLY-1	06 1600	EXT GRADE PLYWOOD
ACT-9	09 5100	ACOUSTIC CEILING TILE - 2X4' - WASHABLE	FP-2	07 8100	INTUMESCENT PAINT FIRE PROOFING	FLY-2	06 1200	POSTER DISPLAY CASE
AE5S-1	05 1213	ARCHITECTURAL EXPOSED STRUCTURAL STEEL - POWDER COATED	FUR-1	08 8415	5/8" THK GYP BOARD @ METAL STUD FRAMING	PL-8	06 4218	PLASTIC LAMINATE (REFER TO COLOR LEGEND FOR TYPE AND COLOR)
AG	08 4113	ALUMINUM GLAZING SYSTEM - STOREFRONT	FW-1	09 8415	1/2" FABRIC WRAPPED HOMASOTE PANEL	PT-8	09 8000	PAINT (REFER TO COLOR LEGEND FOR TYPE AND COLOR)
AG-1	08 4113	ALUMINUM GLAZING SYSTEM - 7'12"						
AG-2	08 4113	ALUMINUM GLAZING SYSTEM - 7'12"						
AG-3	08 4113	ALUMINUM GLAZING SYSTEM - 10'12"						
AG-4	08 4113	ALUMINUM GLAZING SYSTEM - INTERIOR STOREFRONT						
AG-5	08 4113	ALUMINUM GLAZING SYSTEM - 6" CURTAINWALL						
AG-6	08 4113	ALUMINUM GLAZING SYSTEM - 6" CURTAINWALL						
AG-7	08 4113	ALUMINUM GLAZING SYSTEM - 10'12"						
AG-SS	08 4113	ALUMINUM GLAZING SYSTEM SUN SCREEN						
AP-MTL	09 8415	METAL ACOUSTIC PANEL						
AP-WD	09 8415	ACOUSTIC WOOD PANELS						
AP-C1	09 8415	ACOUSTIC LAY-IN PYRAMIDAL DIFFUSER PANELS						
AP-C2	09 8415	ACOUSTIC LAY-IN PYRAMIDAL DIFFUSER PANELS						
AP-C3	09 8415	ACOUSTIC LAY-IN PYRAMIDAL DIFFUSER PANELS						
AP-W1	09 8415	ACOUSTIC ABSORBER PANELS						
AP-W2	09 8415	ACOUSTIC ABSORBER PANELS						
AP-W3	09 8415	ACOUSTIC WALL MOUNT TECTUM PANELS						
AP-W4	09 8415	ACOUSTIC SCREEN PRINTED PANEL						
BN-1	10 5113	FLR MOUNTED STEEL BENCH W/ MAPLE TOP						
BN-2	10 5113	FLR MOUNTED STEEL BENCH W/ MAPLE TOP						
BN-3	10 5113	STEEL DETENTION BENCH						
BN-4	10 5113	STEEL DETENTION BENCH						
BN-5	12 6600	VINYL CAPPED ALUMINUM NATATORIUM SPECTATOR BENCH						
BR-1	04 2000	BRICK						
BR-2	04 2000	BRICK						
BS-1	05 1200	BUILDING STRUCTURAL STEEL						
BS-2	05 1200	BUILDING SECONDARY STEEL						
BS-2A	05 1200	GALV CHANNEL FRAME						
BS-2B	05 1200	GALV CHANNEL FRAME						
BS-2C	05 1200	STEEL PLATE OR EMBLS AS REQUIRED BY AG INSTALLATION						
BFC	03 3000	BUSHED FINISHED CONCRETE						
C-1	10 5113	STAINLESS STEEL WALL MTD CUBBIES						
CB-1	09 3000	CERAMIC BASE						
CG-1	10 2600	CORNER GUARD (RUBBER)						
CG-2	10 2600	CORNER GUARD (SS)						
CJ	04 2000	MASONRY CTRL JT						
CJ-2	04 2000	3/8" HORIZ EXT MASONRY CTRL JT - ALIGN TO C&T TYP						
CJ-3	04 2000	3/8" HORIZ INT MASONRY CTRL JT - ALIGN TO C&T TYP						
CLG-1	09 2900	GWB CEILING (1 LAYER 5/8")						
CLG-2	09 2900	GWB CEILING (2HR L&A U&S-B)						
CLG-3	09 2900	GWB CEILING (2 LAYERS 5/8")						
CLG-4	09 2900	GWB CEILING (2 LAYERS 5/8")						
CLG-5	09 2900	GWB CEILING (2 LAYERS 5/8")						
CLG-6	09 2900	GWB CEILING (2 LAYERS 5/8")						
CM-4	04 2000	GLAZED CMU W/ INTEGRAL COVE BASE						
CMU-1	04 2000	CONCRETE MASONRY UNITS (8" UNO)						
CMU-2	04 2000	CONCRETE MASONRY UNITS (8" UNO)						
CMU-4	04 2000	GLAZED CMU						
CONC-1	03 3000	CONCRETE SLAB						
CONC-2	03 3000	CONC-1 W/ REINFORCING						
CONC-3	03 3000	CONCRETE VAPOR BARRIER						
CONC-4	03 3000	CONCRETE VAPOR BARRIER						
CONC-5	03 3000	CONCRETE VAPOR BARRIER						
CONC-6	03 3000	CONCRETE VAPOR BARRIER						
CONC-7	03 3000	CONCRETE VAPOR BARRIER						
CONC-8	03 3000	CONCRETE VAPOR BARRIER						
CONC-9	03 3000	CONCRETE VAPOR BARRIER						
CONC-10	03 3000	CONCRETE VAPOR BARRIER						
CONC-11	03 3000	CONCRETE VAPOR BARRIER						
CONC-12	03 3000	CONCRETE VAPOR BARRIER						
CONC-13	03 3000	CONCRETE VAPOR BARRIER						
CONC-14	03 3000	CONCRETE VAPOR BARRIER						
CONC-15	03 3000	CONCRETE VAPOR BARRIER						
CONC-16	03 3000	CONCRETE VAPOR BARRIER						
CONC-17	03 3000	CONCRETE VAPOR BARRIER						
CONC-18	03 3000	CONCRETE VAPOR BARRIER						
CONC-19	03 3000	CONCRETE VAPOR BARRIER						
CONC-20	03 3000	CONCRETE VAPOR BARRIER						
CONC-21	03 3000	CONCRETE VAPOR BARRIER						
CONC-22	03 3000	CONCRETE VAPOR BARRIER						
CONC-23	03 3000	CONCRETE VAPOR BARRIER						
CONC-24	03 3000	CONCRETE VAPOR BARRIER						
CONC-25	03 3000	CONCRETE VAPOR BARRIER						
CONC-26	03 3000	CONCRETE VAPOR BARRIER						
CONC-27	03 3000	CONCRETE VAPOR BARRIER						
CONC-28	03 3000	CONCRETE VAPOR BARRIER						
CONC-29	03 3000	CONCRETE VAPOR BARRIER						
CONC-30	03 3000	CONCRETE VAPOR BARRIER						
CONC-31	03 3000	CONCRETE VAPOR BARRIER						
CONC-32	03 3000	CONCRETE VAPOR BARRIER						
CONC-33	03 3000	CONCRETE VAPOR BARRIER						
CONC-34	03 3000	CONCRETE VAPOR BARRIER						
CONC-35	03 3000	CONCRETE VAPOR BARRIER						
CONC-36	03 3000	CONCRETE VAPOR BARRIER						
CONC-37	03 3000	CONCRETE VAPOR BARRIER						
CONC-38	03 3000	CONCRETE VAPOR BARRIER						
CONC-39	03 3000	CONCRETE VAPOR BARRIER						
CONC-40	03 3000	CONCRETE VAPOR BARRIER						
CONC-41	03 3000	CONCRETE VAPOR BARRIER						
CONC-42	03 3000	CONCRETE VAPOR BARRIER						
CONC-43	03 3000	CONCRETE VAPOR BARRIER						
CONC-44	03 3000	CONCRETE VAPOR BARRIER						
CONC-45	03 3000	CONCRETE VAPOR BARRIER						
CONC-46	03 3000	CONCRETE VAPOR BARRIER						
CONC-47	03 3000	CONCRETE VAPOR BARRIER						
CONC-48	03 3000	CONCRETE VAPOR BARRIER						
CONC-49	03 3000	CONCRETE VAPOR BARRIER						
CONC-50	03 3000	CONCRETE VAPOR BARRIER						
CONC-51	03 3000	CONCRETE VAPOR BARRIER						
CONC-52	03 3000	CONCRETE VAPOR BARRIER						
CONC-53	03 3000	CONCRETE VAPOR BARRIER						
CONC-54	03 3000	CONCRETE VAPOR BARRIER						
CONC-55	03 3000	CONCRETE VAPOR BARRIER						
CONC-56	03 3000	CONCRETE VAPOR BARRIER						
CONC-57	03 3000	CONCRETE VAPOR BARRIER						
CONC-58	03 3000	CONCRETE VAPOR BARRIER						
CONC-59	03 3000	CONCRETE VAPOR BARRIER						
CONC-60	03 3000	CONCRETE VAPOR BARRIER						
CONC-61	03 3000	CONCRETE VAPOR BARRIER						
CONC-62	03 3000	CONCRETE VAPOR BARRIER						
CONC-63	03 3000	CONCRETE VAPOR BARRIER						
CONC-64	03 3000	CONCRETE VAPOR BARRIER						
CONC-65	03 3000	CONCRETE VAPOR BARRIER						
CONC-66	03 3000	CONCRETE VAPOR BARRIER						
CONC-67	03 3000	CONCRETE VAPOR BARRIER						
CONC-68	03 3000	CONCRETE VAPOR BARRIER						
CONC-69	03 3000	CONCRETE VAPOR BARRIER						
CONC-70	03 3000	CONCRETE VAPOR BARRIER						
CONC-71	03 3000	CONCRETE VAPOR BARRIER						
CONC-72	03 3000	CONCRETE VAPOR BARRIER						
CONC-73	03 3000	CONCRETE VAPOR BARRIER						
CONC-74	03 3000	CONCRETE VAPOR BARRIER						
CONC-75	03 3000	CONCRETE VAPOR BARRIER						
CONC-76	03 3000	CONCRETE VAPOR BARRIER						
CONC-77	03 3000	CONCRETE VAPOR BARRIER						
CONC-78	03 3000	CONCRETE VAPOR BARRIER						
CONC-79	03 3000	CONCRETE VAPOR BARRIER						
CONC-80	03 3000	CONCRETE VAPOR BARRIER						
CONC-81	03 3000	CONCRETE VAPOR BARRIER						
CONC-82	03 3000	CONCRETE VAPOR BARRIER						
CONC-83	03 3000	CONCRETE VAPOR BARRIER						
CONC-84	03 3000	CONCRETE VAPOR BARRIER						
CONC-85	03 3000	CONCRETE VAPOR BARRIER						
CONC-86	03 3000	CONCRETE VAPOR BARRIER						
CONC-87	03 3000	CONCRETE VAPOR BARRIER						
CONC-88	03 3000	CONCRETE VAPOR BARRIER						
CONC-89	03 3000	CONCRETE VAPOR BARRIER						
CONC-90	03 3000	CONCRETE VAPOR BARRIER						
CONC-91	03 3000	CONCRETE VAPOR BARRIER						
CONC-92	03 3000	CONCRETE VAPOR BARRIER						
CONC-93	03 3000	CONCRETE VAPOR BARRIER						
CONC-94	03 3000	CONCRETE VAPOR BARRIER						

Table with columns: Door No, From Room, To Room, Door Type, Frame, Fire Rating, STC Rating, Comments, Security. Rows include 0102 STAIR 2, 0103A ELEV CONTROL, 0111 PARKING, etc.

Table with columns: Door No, From Room, To Room, Door Type, Frame, Fire Rating, STC Rating, Comments, Security. Rows include 1303A CORRIDOR, 1303B CORRIDOR, 1303C CORRIDOR, etc.

Table with columns: Door No, From Room, To Room, Door Type, Frame, Fire Rating, STC Rating, Comments, Security. Rows include 2328 HEALTH SUITE/CLINIC WAITING, 2329 HEALTH SUITE/CLINIC WAITING, etc.



ESK ARCHITECTS & ENGINEERS, Inc. 1155 MACARTHUR BLVD., NWSUITE 108 WASHINGTON, DC 20016. MOODY NOLAN ASSOCIATES ARCHITECTS 1335 WASHINGTON AVE., NW, SUITE 800 WASHINGTON, DC 20004.

SKUSA STRUCTURAL ENGINEERS 1155 CONNECTICUT AVE., NW, SUITE 800 WASHINGTON, DC 20036. SETTY & ASSOCIATES INTERNATIONAL 5185 MACARTHUR BLVD., NWSUITE 106 WASHINGTON, DC 20016.

LANDSCAPE ARCHITECTURE BUREAU 714 7TH STREET, SE WASHINGTON, DC 20003. SHEN MILSOM WILKE 1222 N. FILLMORE ST., SUITE 360 ARLINGTON, VA 22202.

SUSTAINABLE DESIGN CONSULTING 1611 CONNECTICUT AVE. NW, SUITE 205 WASHINGTON, DC 20009. ADRIATIC DESIGN GROUP 2256 PARADAY AVENUE CARLETON, ONTARIO L0A 1H0 CANADA.

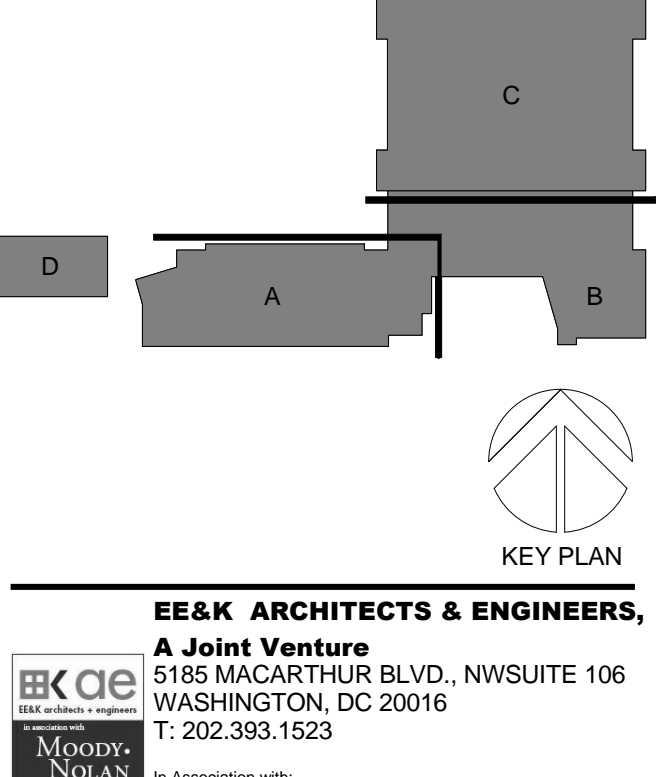
PROJECT TITLE: DUNBAR SENIOR HIGH SCHOOL. PROJECT No.: 44140.00. DRAWING TITLE: DOOR SCHEDULE. SCALE: 1/8" = 1'-0". ISSUED FOR CONSTRUCTION. FEBRUARY 28, 2012.

C:\Users\scm\Documents\44141414_DHS_a.crxm.vst 2/28/2012 1:30:25 PM

SUBMISSIONS	
FOUNDATION TO GRADE PACKAGE	16 SEPT 11
50% CD PROGRESS	14 OCT 11

ISSUED FOR BUILDING REVIEW	09 JAN 12
CFA FINAL APPROVAL	12 JAN 12
ISSUED FOR BUILDING PERMIT	24 FEB 12
ISSUED FOR CONSTRUCTION	28 FEB 12

REVISION	
NO.	DESCRIPTION
	DATE



EESK ARCHITECTS & ENGINEERS
A Joint Venture
1335 MAGUIRE BLVD., NW, SUITE 108
WASHINGTON, DC 20016
T. 202.252.1523

MOODY NOLAN
AN ASSOCIATE WITH
5335 WISCONSIN AVE. NW, SUITE 900
WASHINGTON, DC 20015
T. 202.244.4159

Owner:
DISTRICT OF COLUMBIA PUBLIC SCHOOLS
OPERM DEPARTMENT OF GENERAL SERVICES

Architect of Record:
PERKINS EASTMAN
2121 WARD COURT, NW FLOOR 6
WASHINGTON, DC 20037
T. 202.861.1325

Associate Architect:
MOODY NOLAN
5335 WISCONSIN AVE. NW, SUITE 900
WASHINGTON, DC 20015
T. 202.244.4159

Structural:
SK&A STRUCTURAL ENGINEERS
1155 CONNECTICUT AVE. NW, SUITE 600
WASHINGTON, DC 20036
T. 202.895.6520

MEP:
SETTY & ASSOCIATES INTERNATIONAL
5185 MACARTHUR BLVD., NW, SUITE 106
WASHINGTON, DC 20016
T. 202.393.1523

Civil Engineer:
AMT, LLC
1010 STREET, NE, SUITE 430
WASHINGTON, DC 20002
T. 202.269.4545

Landscaping:
LANDSCAPE ARCHITECTURE BUREAU
714 7TH STREET, SE
WASHINGTON, DC 20003
T. 202.543.6559

Food Service:
NYHOS ASSOCIATES, INC.
1821A CLOVER HILL WAY
GAITHERSBURG, MD 20879
T. 240.653.0530

Acoustics, Audio-Visual, Telecommunications & Security Design:
SHEN MILSON WILKIE
1222 N. FILLMORE ST., SUITE 360
ARLINGTON, VA 22201
T. 703.243.6301

LEED:
SUSTAINABLE DESIGN CONSULTING
1611 CONNECTICUT AVE. NW, SUITE 200,
WASHINGTON, DC 20009
T. 202.667.1620

LEED:
SUSTAINABLE DESIGN CONSULTING
1611 CONNECTICUT AVE. NW, SUITE 200,
WASHINGTON, DC 20009
T. 202.667.1620

LEED:
SUSTAINABLE DESIGN CONSULTING
1611 CONNECTICUT AVE. NW, SUITE 200,
WASHINGTON, DC 20009
T. 202.667.1620

LEED:
SUSTAINABLE DESIGN CONSULTING
1611 CONNECTICUT AVE. NW, SUITE 200,
WASHINGTON, DC 20009
T. 202.667.1620

LEED:
SUSTAINABLE DESIGN CONSULTING
1611 CONNECTICUT AVE. NW, SUITE 200,
WASHINGTON, DC 20009
T. 202.667.1620

LEED:
SUSTAINABLE DESIGN CONSULTING
1611 CONNECTICUT AVE. NW, SUITE 200,
WASHINGTON, DC 20009
T. 202.667.1620

LEED:
SUSTAINABLE DESIGN CONSULTING
1611 CONNECTICUT AVE. NW, SUITE 200,
WASHINGTON, DC 20009
T. 202.667.1620

LEED:
SUSTAINABLE DESIGN CONSULTING
1611 CONNECTICUT AVE. NW, SUITE 200,
WASHINGTON, DC 20009
T. 202.667.1620

LEED:
SUSTAINABLE DESIGN CONSULTING
1611 CONNECTICUT AVE. NW, SUITE 200,
WASHINGTON, DC 20009
T. 202.667.1620

LEED:
SUSTAINABLE DESIGN CONSULTING
1611 CONNECTICUT AVE. NW, SUITE 200,
WASHINGTON, DC 20009
T. 202.667.1620

LEED:
SUSTAINABLE DESIGN CONSULTING
1611 CONNECTICUT AVE. NW, SUITE 200,
WASHINGTON, DC 20009
T. 202.667.1620

LEED:
SUSTAINABLE DESIGN CONSULTING
1611 CONNECTICUT AVE. NW, SUITE 200,
WASHINGTON, DC 20009
T. 202.667.1620

LEED:
SUSTAINABLE DESIGN CONSULTING
1611 CONNECTICUT AVE. NW, SUITE 200,
WASHINGTON, DC 20009
T. 202.667.1620

LEED:
SUSTAINABLE DESIGN CONSULTING
1611 CONNECTICUT AVE. NW, SUITE 200,
WASHINGTON, DC 20009
T. 202.667.1620

LEED:
SUSTAINABLE DESIGN CONSULTING
1611 CONNECTICUT AVE. NW, SUITE 200,
WASHINGTON, DC 20009
T. 202.667.1620

LEED:
SUSTAINABLE DESIGN CONSULTING
1611 CONNECTICUT AVE. NW, SUITE 200,
WASHINGTON, DC 20009
T. 202.667.1620

LEED:
SUSTAINABLE DESIGN CONSULTING
1611 CONNECTICUT AVE. NW, SUITE 200,
WASHINGTON, DC 20009
T. 202.667.1620

LEED:
SUSTAINABLE DESIGN CONSULTING
1611 CONNECTICUT AVE. NW, SUITE 200,
WASHINGTON, DC 20009
T. 202.667.1620

LEED:
SUSTAINABLE DESIGN CONSULTING
1611 CONNECTICUT AVE. NW, SUITE 200,
WASHINGTON, DC 20009
T. 202.667.1620

LEED:
SUSTAINABLE DESIGN CONSULTING
1611 CONNECTICUT AVE. NW, SUITE 200,
WASHINGTON, DC 20009
T. 202.667.1620

LEED:
SUSTAINABLE DESIGN CONSULTING
1611 CONNECTICUT AVE. NW, SUITE 200,
WASHINGTON, DC 20009
T. 202.667.1620

LEED:
SUSTAINABLE DESIGN CONSULTING
1611 CONNECTICUT AVE. NW, SUITE 200,
WASHINGTON, DC 20009
T. 202.667.1620

LEED:
SUSTAINABLE DESIGN CONSULTING
1611 CONNECTICUT AVE. NW, SUITE 200,
WASHINGTON, DC 20009
T. 202.667.1620

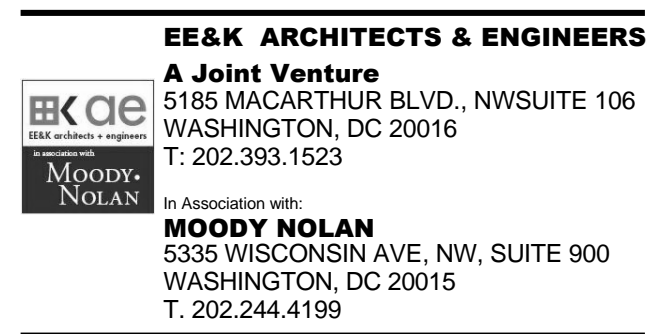
Room Number	Room Name	Floor Finish	Base Finish	Ceiling Finish	Comments
0102	STAIR 2	LN-1A	RB-1	CLG-3	
0103	ELEV.	SC	RB-1	CLG-3	
0103A	ELEV CONTROL	SC	RB-1	CLG-3	
0111	CORRIDOR	LN-1A	RB-1	ACT-3	
0120	ENGINEERING STORAGE	SC	RB-1	EXP-1	
0121	ELECTRICAL	SC	RB-1	EXP-1	
0122	MEP	SC	RB-1	EXP-1	
0303	ELEV-2	CT-1	CB-1	CLG-1	
0304	STAIR 4	RS-2	RB-1	CLG-1	
0305	STAIR 5A	TZ-4	TZB-4	EXP-1	
0306	MECH	RS-2	RB-1	CLG-1	
0307	STAIR 7	RS-2	RB-1	CLG-1	
0308	STAIR 8	RS-2	RB-1	CLG-1	
0309	STAIR 9	TZ-2	RB-1	CLG-1	
0310	CORRIDOR	TZ-3	TZB-3	ACT-6	
0311	NATORIUM LOBBY	TR-3	CMB-4	CLG-6	
0312	SVC VESTIBULE	SC	RB-1	EXP-1	
0313	CORRIDOR	SC	RB-1	EXP-1	
0341	BUILDING SHOP & STORAGE	SC	RB-1	EXP-1	
0342	STAFF TOILET	CT-1	CB-1	CLG-1	
0343	STAFF LOCKER - WOMEN	CT-1	CB-1	CLG-1	
0344	STAFF LOCKER - MEN	CT-1	CB-1	CLG-1	
0345	STAFF TOILET	CT-1	CB-1	CLG-1	
0346	ELEV CONTROL	SC	RB-1	EXP-1	
0347	LAUNDRY	SC	RB-1	EXP-1	
0348	JANITORS CLOSET	SC	RB-1	EXP-1	
0350	DAYCARE SUITE	LN-1A	RB-1	ACT-3	
0351	RR	CT-1	CB-1	CLG-1	
0352	STORAGE	SC	RB-1	EXP-1	
0353	FIRE SERVICE BACKFLOW	SC	RB-1	EXP-1	
0354	RECEIVING	SC	RB-1	EXP-1	
0354A	CUSTODIAL OFFICE	SC	RB-1	EXP-1	
0354B	WATER SERVICE BACKFLOW	SC	RB-1	EXP-1	
0355	MAIN ELECTRICAL	SC	RB-1	EXP-1	
0356	EMERGENCY ELECTRICAL	SC	RB-1	EXP-1	
0357	MAIN TELECOMM	LN-2	RB-1	EXP-1	
0358	ENGINEERING OFFICE	SC	RB-1	EXP-1	
0359	MEP	SC	RB-1	EXP-1	
0360	OFFICE GIRLS COACH	LN-1A	RB-1	ACT-3	
0361	COACH SHOWERR	CT-1	CB-1	CLG-1	
0362	ATHLETIC LOCKERS - GIRLS	RS-2	RB-1	CLG-6	
0363	CLOSET	RB-1	EXP-1		
0364	RR	CT-1	CB-1	CLG-1	
0365	TEAM SHOWER - GIRLS	CT-1	CB-1	CLG-6	
0366	TEAM ROOM GIRLS	RS-2	RB-1	CLG-6	
0367	VESTIBULE	SC	RB-1	EXP-1	
0370	FAMILY TOILET	CT-1	CB-1	CLG-6	
0371	POOL LOCKER GIRLS	CT-1	CB-1	CLG-6	
0372	POOL SHOWERS	CT-1	CMB-4	CLG-6	
0373	VESTIBULE	CT-1	CMB-4	CLG-6	
0374	RR	CT-1	CMB-4	CLG-6	
0380	POOL DECK	RS-3	CMB-4	EXP-1	
0391	POOL	EXP-1			
0392	POOL STORAGE	SC	RB-1	EXP-1	
0392A	MEP SUPPORT	SC	RB-1	EXP-1	
0393	NATORIUM SUPPORT	SC	RB-1	EXP-1	
0393B	ACID & CO2	SC	RB-1	EXP-1	
0393C	CHLORINATION ROOM	SC	RB-1	EXP-1	
0394	NATORIUM OFFICE	RS-2	RB-1	ACT-3	
0395	POOL LOCKER BOYS	CT-1	CB-1	CLG-6	
0396	POOL LOCKER BOYS	CT-1	CB-1	CLG-6	
0397	VESTIBULE	CT-1	CMB-4	CLG-6	
0398	RR	CT-1	CMB-4	CLG-6	
0399	OFFICE BOYS COACH	LN-1A	RB-1	ACT-3	
0401	COACH SHOWERR	CT-1	CB-1	CLG-1	
0402	ATHLETIC LOCKERS - BOYS	RS-2	RB-1	CLG-6	
0403	RR	CT-1	CB-1	CLG-6	
0404	TEAM SHOWER - BOYS	CT-1	CB-1	CLG-6	
0405	TEAM ROOM BOYS	RS-2	RB-1	CLG-6	
0406	VESTIBULE	SC	RB-1	EXP-1	
0407	SVC VESTIBULE	TRG-1	INS-6		
0408	FIRE PUMP	SC	RB-1	EXP-1	
0409	WATER SERVICE	SC	RB-1	EXP-1	
0410	MEP	TRC-1	EXP-1		
0411	RECYCLING	TRC-1	EXP-1		
0412	AREAWAY	EXP-1			

Room Number	Room Name	Floor Finish	Base Finish	Ceiling Finish	Comments
0203	STAIR 3	RS-2	RB-1	EXP-1	
1101	STAIR 1	TZ-4	TZB-4	CLG-1	
1102	STAIR 2	TZ-2	TZB-2	CLG-1	
1103	ELEV-1	SC	RB-1	EXP-1	
1104	ELECTRICAL CLOSET	SC	RB-1	EXP-1	
1111	CORRIDOR	TZ-3	TZB-3	ACT-6	
1113	RR	CT-1	CB-1	CLG-6	
1114	RR	CT-1	CB-1	CLG-6	
1148	JANITORS CLOSET	SC	RB-1	EXP-1	
1121	CLASSROOM	LN-1A	RB-1	ACT-3	
1122	CLOSET	LN-1A	RB-1	ACT-3	
1123	MECH	SC	RB-1	EXP-1	
1124	CLASSROOM	LN-1A	RB-1	ACT-3	
1124A	CLOSET	LN-1A	RB-1	ACT-3	
1125	CLASSROOM	LN-1A	RB-1	ACT-3	
1126	CLOSET	LN-1A	RB-1	ACT-3	
1127	MECH	SC	RB-1	EXP-1	
1128	CLASSROOM	LN-1A	RB-1	ACT-3	
1129	CLOSET	LN-1A	RB-1	ACT-3	
1130	CLASSROOM	LN-1A	RB-1	ACT-3	
1131	CLOSET	LN-1A	RB-1	ACT-3	
1132	MECH	SC	RB-1	EXP-1	
1133	CLASSROOM	LN-1A	RB-1	ACT-3	
1134	CLASSROOM	LN-1A	RB-1	ACT-3	
1135	CLASSROOM	LN-1A	RB-1	ACT-3	
1136	CLOSET	LN-1A	RB-1	ACT-3	
1137	MECH	SC	RB-1	EXP-1	
1138	CLASSROOM	LN-1A	RB-1	ACT-3	
1139	CLOSET	LN-1A	RB-1	ACT-3	
1140	SPECIAL NEEDS CLASSROOM	LN-1A	RB-1	ACT-3	
1141	TOILET	CT-1	CB-1	CLG-1	
1142	CLOSET	CT-1	CB-1	CLG-1	
1143	MECH	SC	RB-1	EXP-1	
1145	JANITORS CLOSET	SC	RB-1	EXP-1	
1161	ASST. PRINCIPAL	LN-1A	RB-1	ACT-3	
1162	CONFERENCE ROOM / TEACHER WORK ROOM	LN-1A	RB-1	ACT-3	
1163	CONFERENCE ROOM	LN-1A	RB-1	ACT-3	
1164	STORAGE	LN-1A	RB-1	EXP-1	
1170	PROJECT INDEPENDENT STUDY LAB	LN-1A	RB-1	ACT-3	
1171	STORAGE	SC	RB-1	EXP-1	
1172	MECH	SC	RB-1	EXP-1	
1175	PHYSICS LAB	LN-1A	RB-1	ACT-5	
1176	PREP ROOM	LN-1B	RB-1	ACT-3	
1180	PHYSICAL SCIENCES LAB	LN-1A	RB-1	ACT-5	
1181	PREP ROOM	LN-1B	RB-1	ACT-3	
1182	MECH	SC	RB-1	EXP-1	
1183	PHYSICS LAB	LN-1A	RB-1	ACT-5	
1190	STAFF TOILET	CT-1	CB-1	CLG-1	
1191	STUDENT SERVICE OFFICE	LN-1A	RB-1	ACT-3	
1192	STORAGE	SC	RB-1	EXP-1	
1193	MECH	SC	RB-1	EXP-1	
1203	STAIR 3	RS-2	RB-1	CLG-1	
1210	SECURITY VESTIBULE	TZ-1	TZB-1	ACT-6	
1213	ARMORY	TZ-1	TZB-1	EXP-3	
1214	CAFETERIA	TZ-1	TZB-1	EXP-1	
1215	LOBBY	LN-1A	RB-1	ACT-3	
1216	ATTENDANCE	LN-1A	RB-1	ACT-3	
1217	EXERCISE	LN-1A	RB-1	ACT-3	
1218	BUSINESS MANAGER	LN-1A	RB-1	ACT-3	
1219	CONFERENCE ROOM	LN-1A	RB-1	ACT-3	
1220	NATORIUM OFFICE	RS-2	RB-1	ACT-3	
1221	MAIL ROOM	LN-1A	RB-1	ACT-3	
1222	CENTRAL WORKROOM	LN-1A	RB-1	ACT-3	
1223	GENERAL + ADMINISTRATIVE SUPPLY STORAGE	CT-1	CB-1	CLG-1	
1224	TOILET	CT-1	CB-1	CLG-1	
1225	TOILET	CT-1	CB-1	CLG-1	
1226	RECORD STORAGE	LN-1A	RB-1	ACT-3	
1228	PRINCIPALS OFFICE	LN-1A	RB-1	ACT-3	
1229	PRINCIPAL TOILET	CT-1	CB-1	CLG-1	
1230	SCHOOL MUSEUM	TZ-1	TZB-1	ACT-3	
1303	ELEV-2	CT-1	CB-1	CLG-1	
1304	STAIR 4	RS-2	RB-1	CLG-1	
1305	STAIR 5A	TZ-2	TZB-2	CLG-1	
1306	ELEV-1	SC	RB-1	EXP-1	
1307	STAIR 7	RS-2	RB-1	CLG-1	
1308	STAIR 8	RS-2	RB-1	CLG-1	
1309	STAIR 9	TZ-2	RB-1	CLG-1	
1310	CORRIDOR	TZ-1	TZB-1	ACT-6	
1311	NATORIUM VIEWING	TZ-1	TZB-1	EXP-2	
1312	CORRIDOR	TZ-2	TZB-2	ACT-6	
1313	CORRIDOR	TZ-2	TZB-2	ACT-6	
1314	WOMENS PUBLIC TOILETS	CT-1	CB-1	CLG-6	
1315	MENS PUBLIC TOILETS	CT-1	CB-1	CLG-6	
1316	CORRIDOR	TZ-2	TZB-2	ACT-6	
1320	SERVING AREA	TZ-1	TZB-1	ACT-6	
1321	GROUPE PREP	RS-1	RS-1	ACT-9	
1322	DRY STORAGE	RS-1	RS-1	ACT-9	
1323	CLEANING STORAGE	RS-1	RS-1		

DOOR HARDWARE SETS

Table with columns for HW SET, EACH TO HAVE, and detailed hardware specifications including hinge, lock, handle, and door contact types and quantities.

REVISION table with columns for NO., DESCRIPTION, and DATE, listing project changes.



ESK ARCHITECTS & ENGINEERS, A Joint Venture with MOODY NOLAN ARCHITECTS, INC. Project information including address and contact details.

Owner: DISTRICT OF COLUMBIA PUBLIC SCHOOLS. Architect of Record: PERKINS EASTMAN. Project location: 2400 EAST CAPITAL STREET, SE WASHINGTON, DC 20003.

Structural: SKKA STRUCTURAL ENGINEERS. MEP: SKA & ASSOCIATES INTERNATIONAL. Landscaping: LANDSCAPE ARCHITECTURE BUREAU.

LEED: LEED. Sustainable Design Consultant: SUSTAINABLE DESIGN CONSULTING. Aquatic Design: AQUATIC DESIGN GROUP.

PROJECT TITLE: DUNBAR SENIOR HIGH SCHOOL. PROJECT NO.: 44140.00. DRAWING TITLE: HARDWARE SETS.

SCALE: 1/2" = 1'-0". ISSUED FOR CONSTRUCTION. DATE: FEBRUARY 28, 2012.

Vertical text on the left margin: C:\users\acm\Documents\44140_DHS_a.cmn.v1 2/28/2012 1:35:55 PM

SEE A111 FOR DOOR SCHEDULE. SEE SPEC SECTIONS FOR HARDWARE SET SCHEDULE. G015 HARDWARE SET SCHEDULE.

DOOR HARDWARE SETS, CONTINUED

SPECWORKS # 121752-09-730724

HW SET: 77

EACH TO HAVE:

3	EA	HINGE	588HW 4.5 X 4.5 NRP	452	IVE
1	EA	POWER TRANSFER	EPT-10	489	VON
1	EA	PRIMS CORE ONLY	20740	426	SCH
1	EA	EL STOREROOM LOCK	L988TEL-RX-06A-FAL-SAFE-526	526	SCH
1	EA	SURFACE CLOSER	4510	489	LCN
1	EA	KICK PLATE	8400 8" X 2" LW	430	IVE
1	EA	WALL STOP	WS48CCV	430	IVE
1	EA	CARD READER	SRM4	GRY	IVE
1	EA	DOOR CONTACT	DOOR CONTACT (DC) BY SECURITY CONTRACTOR		
1	EA	POWER SUPPLY	POWER SUPPLY BY SECURITY CONTRACTOR		

HW SET: 77A

EACH TO HAVE:

3	EA	HINGE	588HW 4.5 X 4.5 NRP	452	IVE
1	EA	POWER TRANSFER	EPT-10	489	VON
1	EA	PRIMS CORE ONLY	20740	426	SCH
1	EA	EL STOREROOM LOCK	L988TEL-RX-06A-FAL-SAFE-526	526	SCH
1	EA	SURFACE CLOSER	4210 CSH	489	LCN
1	EA	MOP PLATE	8400 8" X 1" LW	430	IVE
1	EA	WALL STOP	WS48CCV	430	IVE
1	EA	CARD READER	SRM4	GRY	IVE
1	EA	DOOR CONTACT	DOOR CONTACT (DC) BY SECURITY CONTRACTOR		
1	EA	POWER SUPPLY	POWER SUPPLY BY SECURITY CONTRACTOR		

HW SET: 78

EACH TO HAVE:

3	EA	HINGE	588HW 4.5 X 4.5 NRP	452	IVE
1	EA	PRIVACY SET	L947L 99AL	426	SCH
1	EA	OVERHEAD STOP	1005	430	GLY
1	EA	MOP PLATE	8400 8" X 1" LW	430	IVE
3	EA	SILENCER	SRM4	GRY	IVE

HW SET: 79

EACH TO HAVE:

3	EA	HINGE	588HW 4.5 X 4.5	452	IVE
1	EA	STOREROOM LOCK	L988T 06A	426	SCH
1	EA	PRIMS CORE ONLY	20740	426	SCH
1	EA	SURFACE CLOSER	4011H	489	LCN
1	EA	KICK PLATE	8400 8" X 2" LW	430	IVE
1	EA	SET	5008	BRN	NSP
1	EA	DOOR BOTTOM	229NA	CL	NSP
1	EA	THRESHOLD	425	AL	NSP
1	EA	DOOR CONTACT	DOOR CONTACT (DC) BY SECURITY CONTRACTOR		

HW SET: 80

EACH TO HAVE:

4	EA	HINGE	588HW 4.5 X 4.5 NRP	452	IVE
1	EA	POWER TRANSFER	EPT-10	489	VON
2	EA	PANIC HARDWARE	99AL-GR-99AL	426	VON
1	EA	PANIC HARDWARE	EL947L 99AL	426	VON
2	EA	BRM CYLINDER	20167	426	SCH
2	EA	PRIMS CORE ONLY	20740	426	SCH
1	EA	CONSTRUCTION CORE	2108ACX	426	SCH
2	EA	SURFACE CLOSER	4111 AVB HEDA	489	LCN
2	EA	KICK PLATE	8400 8" X 2" LW	430	IVE
2	EA	WALL STOP	WS48CCV	430	IVE
1	SET	SEALS	5008	BRN	NSP
2	EA	DOOR BOTTOM	229NA	CL	NSP
1	EA	THRESHOLD	425	AL	NSP
1	EA	POWER SUPPLY	PS914-3RS	GRY	SZE
1	EA	CARD READER	CARD READER BY SECURITY CONTRACTOR		
2	EA	DOOR CONTACT	DOOR CONTACT (DC) BY SECURITY CONTRACTOR		

HW SET: 80A

EACH TO HAVE:

6	EA	HINGE	588HW 4.5 X 4.5 NRP	452	IVE
1	EA	POWER TRANSFER	EPT-10	489	VON
1	SET	CONST LATCHING BOLT	FB5P	430	IVE
1	EA	DUST PROOF STRIKE	DP2	426	IVE
2	EA	PRIMS CORE ONLY	20740	426	SCH
1	EA	EL STOREROOM LOCK	L988TEL-RX-06A-FAL-SAFE-526	526	SCH
1	EA	COORDINATOR	COR	426	SCH
1	EA	ASTRACAL	139A	400	NSP
2	EA	SURFACE CLOSER	4210 JAB EDA	489	LCN
2	EA	KICK PLATE	8400 8" X 2" LW	430	IVE
2	EA	WALL STOP	WS48CCV	430	IVE
1	SET	SEALS	5008	BRN	NSP
1	EA	CARD READER	CARD READER BY SECURITY CONTRACTOR		
2	EA	DOOR CONTACT	DOOR CONTACT (DC) BY SECURITY CONTRACTOR		
1	EA	POWER SUPPLY	POWER SUPPLY BY SECURITY CONTRACTOR		

HW SET: 81

EACH TO HAVE:

6	EA	HINGE	588HW 4.5 X 4.5	452	IVE
2	EA	PUSH PLATE	8000 8" X 16"	430	IVE
2	EA	PULL PLATE	8303 8" X 16"	430	IVE
2	EA	SURFACE CLOSER	4111 AVB HEDA	489	LCN
2	EA	KICK PLATE	8400 8" X 2" LW	430	IVE
2	EA	WALL STOP	WS48CCV	430	IVE
2	EA	DOOR BOTTOM	229NA	CL	NSP
1	EA	THRESHOLD	425	AL	NSP

HW SET: 82

EACH TO HAVE:

3	EA	HINGE	588HW 4.5 X 4.5	452	IVE
1	EA	CLASSROOM LOCK	L988T 06A	426	SCH
2	EA	PRIMS CORE ONLY	20740	426	SCH
1	EA	OVERHEAD STOP	1005	430	GLY
1	EA	KICK PLATE	8400 8" X 2" LW	430	IVE
1	SET	SEALS	5008	BRN	NSP
1	EA	DOOR BOTTOM	229NA	CL	NSP
1	EA	THRESHOLD	425	AL	NSP

HW SET: 83

EACH TO HAVE:

3	EA	HINGE	588HW 4.5 X 4.5 NRP	452	IVE
1	EA	POWER TRANSFER	EPT-10	489	VON
1	EA	PRIMS CORE ONLY	20740	426	SCH
1	EA	EL STOREROOM LOCK	L988TEL-RX-06A-FAL-SAFE-526	526	SCH
1	EA	SURFACE CLOSER	4111 AVB SCUSH	489	LCN
1	EA	KICK PLATE	8400 8" X 2" LW	430	IVE
3	EA	SILENCER	SRM4	GRY	IVE
1	EA	CARD READER	CARD READER BY SECURITY CONTRACTOR		
1	EA	DOOR CONTACT	DOOR CONTACT (DC) BY SECURITY CONTRACTOR		
1	EA	POWER SUPPLY	POWER SUPPLY BY SECURITY CONTRACTOR		

HW SET: 84

EACH TO HAVE:

2	EA	POWER TRANSFER	112HD	EPT-10	426	BRN	VON
2	EA	CONTINUOUS HINGE	112HD		426	IVE	
2	EA	PANIC HARDWARE	EL947L-OP-RX		426	VON	
2	EA	BRM CYLINDER	20167		426	SCH	
2	EA	PRIMS CORE ONLY	20740		426	SCH	
2	EA	CONSTRUCTION CORE	2108ACX		426	SCH	
2	EA	SURFACE CLOSER	4210 CUSH		489	LCN	
1	SET	SEALS	5008		BRN	NSP	
1	EA	POWER SUPPLY	PS914-3RS		GRY	SZE	
1	EA	CARD READER	CARD READER BY SECURITY CONTRACTOR				

HW SET: 85

EACH TO HAVE:

2	EA	POWER TRANSFER	112HD	EPT-10	426	BRN	VON
2	EA	CONTINUOUS HINGE	112HD		426	IVE	
2	EA	PANIC HARDWARE	CORNH-L-99AL		426	VON	
2	EA	BRM CYLINDER	20167		426	SCH	
2	EA	PRIMS CORE ONLY	20740		426	SCH	
2	EA	CONSTRUCTION CORE	2108ACX		426	SCH	
2	EA	SURFACE CLOSER	4210 CUSH		489	LCN	
1	SET	SEALS	5008		BRN	NSP	
1	EA	POWER SUPPLY	PS914-3RS		GRY	SZE	
1	EA	CARD READER	CARD READER BY SECURITY CONTRACTOR				
1	EA	DOOR CONTACT	DOOR CONTACT (DC) BY SECURITY CONTRACTOR				

HW SET: 86

EACH TO HAVE:

3	EA	HINGE	588HW 4.5 X 4.5	452	IVE
1	EA	CLASSROOM LOCK	L988T 06A	426	SCH
1	EA	PRIMS CORE ONLY	20740	426	SCH
1	EA	SURFACE CLOSER	1461	489	LCN
1	EA	KICK PLATE	8400 8" X 2" LW	430	IVE
1	EA	WALL STOP	WS48CCV	430	IVE
3	EA	SILENCER	SRM4	GRY	IVE
1	EA	DOOR CONTACT	DOOR CONTACT (DC) BY SECURITY CONTRACTOR		

HW SET: 86A

EACH TO HAVE:

3	EA	HINGE	588HW 4.5 X 4.5	452	IVE
1	EA	CLASSROOM LOCK	L988T 06A	426	SCH
1	EA	PRIMS CORE ONLY	20740	426	SCH
1	EA	SURFACE CLOSER	1461	489	LCN
1	EA	KICK PLATE	8400 8" X 2" LW	430	IVE
1	EA	WALL STOP	WS48CCV	430	IVE
1	SET	SEALS	4508	BRN	NSP
1	EA	DOOR CONTACT	DOOR CONTACT (DC) BY SECURITY CONTRACTOR		

HW SET: 86

EACH TO HAVE:

3	EA	HINGE	588HW 4.5 X 4.5	452	IVE
1	EA	CLASSROOM LOCK	L988T 06A	426	SCH
1	EA	PRIMS CORE ONLY	20740	426	SCH
1	EA	SURFACE CLOSER	1461	489	LCN
1	EA	KICK PLATE	8400 8" X 2" LW	430	IVE
1	EA	WALL STOP	WS48CCV	430	IVE
3	EA	SILENCER	SRM4	GRY	IVE
1	EA	DOOR CONTACT	DOOR CONTACT (DC) BY SECURITY CONTRACTOR		

HW SET: 86A

EACH TO HAVE:

3	EA	HINGE	588HW 4.5 X 4.5	452	IVE
1	EA	CLASSROOM LOCK	L988T 06A	426	SCH
1	EA	PRIMS CORE ONLY	20740	426	SCH
1	EA	SURFACE CLOSER	1461	489	LCN
1	EA	KICK PLATE	8400 8" X 2" LW	430	IVE
1	EA	WALL STOP	WS48CCV	430	IVE
1	SET	SEALS	4508	BRN	NSP
1	EA	DOOR CONTACT	DOOR CONTACT (DC) BY SECURITY CONTRACTOR		

HW SET: 87

EACH TO HAVE:

3	EA	HINGE	588HW 4.5 X 4.5	452	IVE
1	EA	PANIC HARDWARE	PK-RE-99AL-8E	426	VON
1	EA	SURFACE CLOSER	4011H	489	LCN
1	EA	KICK PLATE	8400 8" X 2" LW	430	IVE
1	EA	WALL STOP	WS48CCV	430	IVE
3	EA	SILENCER	SRM4	GRY	IVE

HW SET: 88

EACH TO HAVE:

1	EA	CONTINUOUS HINGE	112HD	426	IVE
1	EA	PULL/PUSH BAR	9196-0	430	IVE
1	EA	SURFACE CLOSER	1461H	489	LCN
1	EA	WALL STOP	WS48CCV	430	IVE
1	SET	SEALS	5008	BRN	NSP

HW SET: 89

EACH TO HAVE:

2	EA	CONTINUOUS HINGE	112HD	426	IVE
1	EA	MULLION	K8R64	489	VON
2	EA	PANIC HARDWARE	XPP9AL-OP	426	VON
1	EA	BRM CYLINDER	20167	426	SCH
2	EA	MORTISE CYLINDER	20169	426	SCH
2	EA	PRIMS CORE ONLY	20740	426	SCH
1	EA	CONSTRUCTION CORE	2108ACX	426	SCH
1	EA	DOOR PULL	VR910M	430	IVE
1	EA	DOOR PULL	VR910M	430	IVE
2	EA	SURFACE CLOSER	4111 AVB SCUSH	489	LCN
2	EA	SEALS	5008	BRN	NSP
1	EA	DOOR CONTACT	DOOR CONTACT (DC) BY SECURITY CONTRACTOR		

HW SET: 90

EACH TO HAVE:

6	EA	HINGE	588HW 4.5 X 4.5	452	IVE
2	EA	FIRE EXIT HARDWARE	PK-RE-99AL-8E	426	VON
2	EA	SURFACE CLOSER	4111 AVB SCUSH	489	LCN
1	SET	SEALS	4508	BRN	NSP
2	EA	DOOR CONTACT	DOOR CONTACT (DC) BY SECURITY CONTRACTOR		

HW SET: 91

EACH TO HAVE:

6	EA	HINGE	588HW 4.5 X 4.5	452	IVE
1	EA	POWER TRANSFER	EPT-10	489	VON
1	EA	PRIMS CORE ONLY	20740	426	SCH
1	EA	EL STOREROOM LOCK	L988TEL-RX-06A-FAL-SAFE-526	526	SCH
1	EA	COORDINATOR	COR	426	SCH
1	EA	ASTRACAL	139A	400	NSP
2	EA	SURFACE CLOSER	4210 CUSH	489	LCN
2	EA	KICK PLATE	8400 8" X 2" LW	430	IVE
2	EA	WALL STOP	WS48CCV	430	IVE
2	EA	SILENCER	SRM4	GRY	IVE
2	EA	DOOR CONTACT	DOOR CONTACT (DC) BY SECURITY CONTRACTOR		

HW SET: 92

EACH TO HAVE:

3	EA	HINGE	588HW 4.5 X 4.5 NRP	452	IVE
1	EA	STOREROOM LOCK	L988T 06A	426	SCH
1	EA	PRIMS CORE ONLY	20740	426	SCH
1	EA	SURFACE CLOSER	4111 AVB EDA SR	489	LCN
1	EA	KICK PLATE	8400 8" X 2" LW	430	IVE
1	EA	SECURITY FLOOR STOP	F518L	BLK	IVE
1	SET	SEALS	5008	BRN	NSP
1	EA	DOOR SWEEP	101VA	CL	NSP
1	EA	THRESHOLD	890	AL	NSP
1	EA	DOOR CONTACT	DOOR CONTACT (DC) BY SECURITY CONTRACTOR		

HW SET: 93

EACH TO HAVE:

8	EA	HINGE	588HW 4.5 X 4.5 NRP	452	IVE
1	EA	POWER TRANSFER	EPT-10	489	VON
1	SET	CONST LATCHING BOLT	FB5P	430	IVE
1	EA	DUST PROOF STRIKE	DP2	426	IVE
2	EA	PRIMS CORE ONLY	20740	426	SCH
1	EA	EL STOREROOM LOCK	L988TEL-RX-06A-FAL-SAFE-526	526	SCH
1	EA	COORDINATOR	COR	426	SCH
1	EA	ASTRACAL	139A	400	NSP
2	EA	SURFACE CLOSER	4210 CUSH	489	LCN
2	EA	MOP PLATE	8400 8" X 1" LW	430	IVE
2	EA	MOP PLATE	8400 8" X 1" LW	430	IVE
1	SET	SEALS	4508	BRN	NSP
1	SET	SEALS	9508	GRY	NSP
1	EA	CARD READER	CARD READER BY SECURITY CONTRACTOR		
2	EA	DOOR CONTACT	DOOR CONTACT (DC) BY SECURITY CONTRACTOR		
1	EA	POWER SUPPLY	POWER SUPPLY BY SECURITY CONTRACTOR		

HW SET: 94

EACH TO HAVE:

8	EA	HINGE	588HW 4.5 X 4.5 NRP
---	----	-------	---------------------