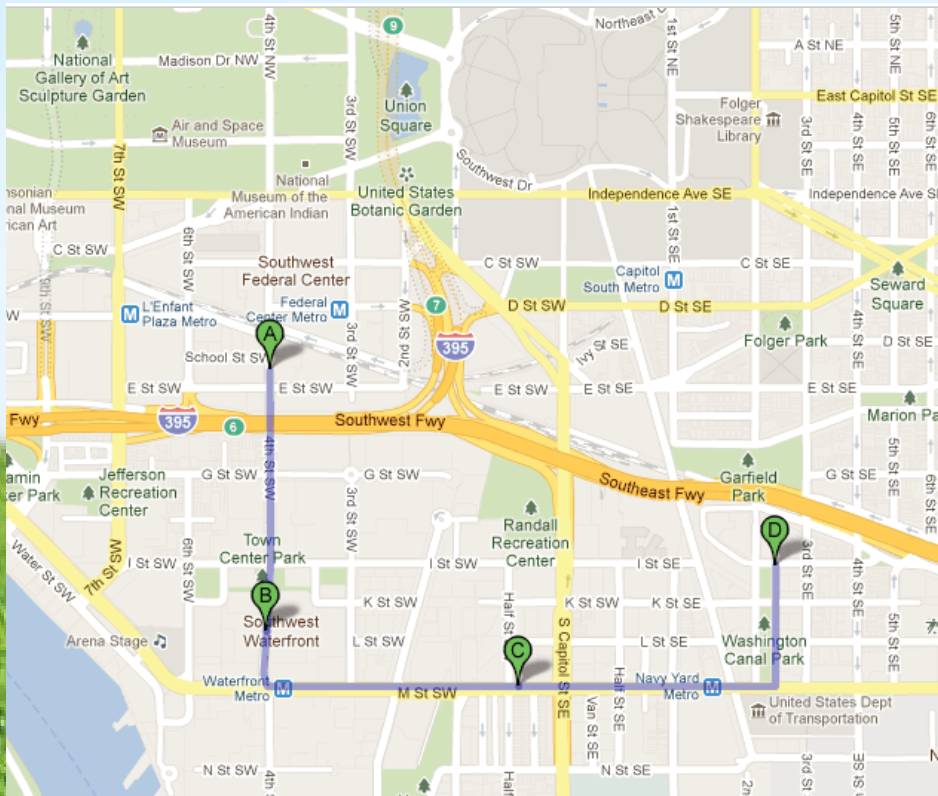


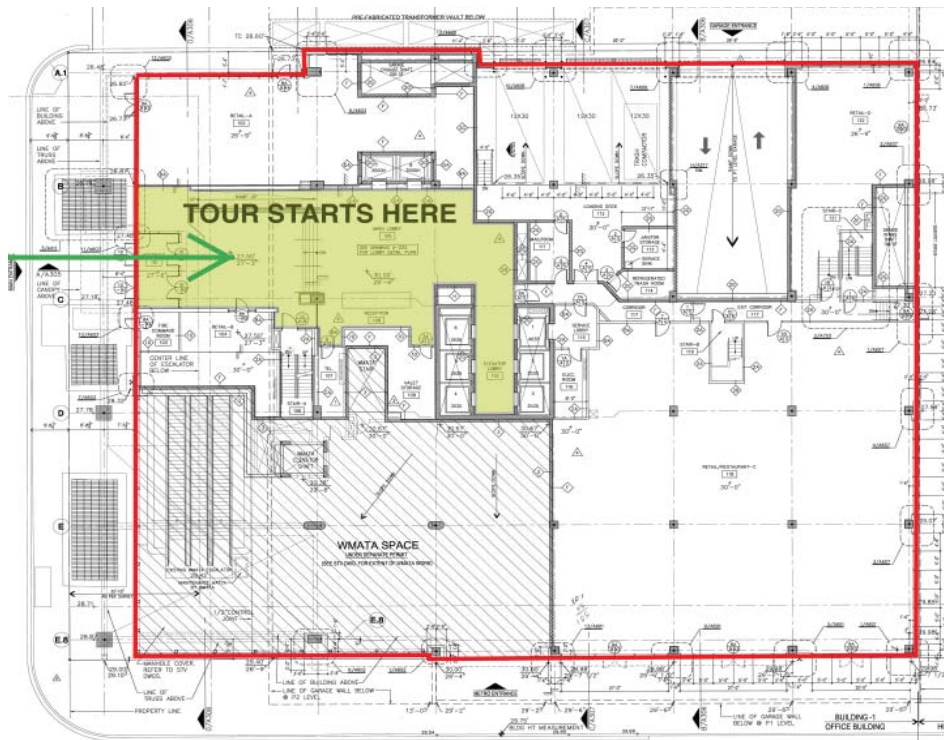
COME VISIT OUR LEED BUILDINGS!!

- A) Consolidated Forensic Laboratory  
UNDER CONSTRUCTION  
Pursuing LEED GOLD  
(4th & School Streets, SW)
- B) Waterfront Towers  
LEED GOLD CERTIFIED  
(1100 4th Street, SW)
- C) 55 M Street, SE  
Pursuing LEED SILVER
- D) 225 Eye Street, SE  
Pursuing LEED GOLD

**Government of the District of Columbia**  
Department of General Services  
+  
District Department of Transportation

**HALF STREET HEADQUARTERS GREEN BUILDING TOUR**  
55 M St SE





**HALF STREET HEADQUARTERS GREEN BUILDING TOURS**  
**20 MINUTE TOURS OFFERED DAILY @ 12:15PM**

Good Afternoon, and welcome to the Half Street Headquarters Green Building Tour of our 144,000 SF of LEED Silver Interior office space within our LEED Gold Base Building.

You will hear me refer to the term LEED several times throughout the tour. LEED stands for Leadership in Energy & Environmental Design. It is an objective international green building standard for evaluating projects. In order to ensure the highest quality of sustainability and comply with the DC Green Building Act of 2006, the District's new owned and leased spaces are designed and constructed according to this standard.

This system recognizes performance in five key areas: sustainable site development, energy and atmosphere, water use, indoor environmental quality, and materials selection. Based on a point system, projects are awarded Certified, Silver, Gold or Platinum certification depending on the credits achieved. We will start in the main lobby and then head up to the District of Columbia Department of Transportation Office Space. There you will get a chance to experience the amazing environment created by a thoughtful and integrated design process that not only looks at choosing materials that are better for our planet, but also looks to create indoor environments that are better, healthier, and more comfortable for our occupants.

**The whole tour should take about 20 - 30 minutes depending on how many great questions you have!**

As you walked in the entrance, I'm sure you noticed out solar and wind powered LED street light. Using the abundant power of the Sun and the prevailing winds of our neighborhood are daily reminders to everyone that enters this building that reducing our energy use is important. The Light Installation is was completed by the folks at SAVWATT and uses no outside power to function.





Speaking of Power, the energy purchased for the District space in this building is part of a large green power commitment that the District has made purchasing 50% of its total electricity from green power sources. This purchase has helped to make Washington DC one of the largest % purchasers of Municipal Green Power in the country and a leader in the east coast for Sustainable Development

We also chose to locate this Agency .1 Mile from the Metro Green Line Subway Station and only .3 Miles from 5 major bus routes. This effort aligns with the LEED Credit for Alternative Transportation which focuses attention on locating projects within close walking distance



to Public Transport. DDOT has begun work on implementing a large scale transportation reduction plan that includes increased bicycling parking and access to DC CAPITAL BIKESHARE for all employees. In addition, they are working with the Department of General Services to develop creative ways to alternative transportation available to other District Agency hubs.

As we head upstairs to the DDOT office space, it is important to understand that the DDOT staff moved to this location from an office space that had 6' high partitions in a maze of systems furniture and exterior offices that had little if any access to natural light.

EXIT 6th FLOOR.



The ability to directly see out of windows from your individual office space is a key component of the LEED indoor environmental credits focusing on daylight and views. Not only does it improve the openness of the office, but we believe that the low partitions and abundant natural lighting make our staff more productive, energetic, and collaborative.





Another perk of this amazing space is that the office happens to look directly into the National Ballpark, a LEED Silver facility and one of the first LEED sports facilities in the country. Having neighbors who are working towards creating better buildings for the District is a great incentive to keep working to make a greener city.



DDOT is committed to using their LEED designed office space as an epicenter for focusing on the close relationship between transportation and sustainability. DDOT is faced with the challenge of providing a sustainable transportation system for the whole District that enhances the economy and promotes livability while protecting the environment.

In addition to choosing Greenseal Furniture, Low-VOC paints and Carpets, and Ceiling tiles that are made of 67% recycled content, the Half Street Headquarters has also taken their strong sense of design and creativity to develop new signage for recycling throughout the space.



The Government of the District of Columbia is trying to take advantage of that 'good neighbor' concept and hopes that you will continue this tour on to several other District facilities that are LEED certified buildings or are under construction and have been designed to LEED standards.

We have prepared a map on the back of this handout that shows you the location of three other District Buildings within walking distance that are pursuing or have achieved LEED certification. Each building will offer similar tours of their spaces as they come on line and we will be using their combined effort to promote a community of better, more efficient, and healthier office environments for the District.

Thank you for stopping by!