



January 30, 2018

Construction Management Guidelines

Ward 6 Short-term Family Housing: 850 Delaware Avenue, SW

This document represents the Government's collaborative community approach of memorializing the strategy for minimizing community impacts during the construction of the Ward 6 Short-Term Family Housing (STFH) project. It includes input from the Advisory Team related to site logistics as well as the communication of Project updates and potential impacts to the nearby community.

This document, dated January 30, 2018, serves as the final construction management guidelines for the Ward 6 STFH project. The mutually agreed upon guidelines are inclusive of previous input from the Ward 6 STFH Advisory Team and finalized in the January 17, 2018 Ward 6 Advisory Team Meeting. This document is considered to be final, no further action is required by either party as it relates to the contents of the Construction Management Guidelines for this Project.

Communication

- Monthly Updates – A monthly report will be provided to the Advisory Team via email from DGS including construction updates and progress, and what to expect for the next month of construction. DGS will also share these updates with neighbors and residents.
- Special Construction Notifications – Email notification will be provided to the Advisory Team for impacts to traffic, noise and urgent issues or events. Printed copies will be provided as requested by the Advisory Team.

Blue Skye Site Staff:

- 2 - Superintendents, 1 - Lead Project Manager, 1 – Mechanical, Electrical, Plumbing (MEP) Project Manager, 1 – Scheduler.

Onsite Point of Contact: David Watz, Superintendent (202)-332-1125

Jobsite Hours:

- Projected daily working hours: 7:00 am – 3:30 pm.
- Standard permitted working hours for the District: 7:00 am – 7:00 pm.
- After Hours Work: Any work performed after 7:00 pm. Blue Skye will notify DGS 5 days prior for approval of any After Hours work. DGS will notify the AT within 5 days as the standard with the understanding that special circumstances may arise where.

Jobsite Signage & Postings:

- Blue Skye will have standard jobsite documentation posted including project signage, permits, safety information, jobsite office location, nearest hospital route, and wage scale information.

Government of the District of Columbia
Department of General Services

Anticipated Workforce Daily Quantities:

- Low Volume – 25 people / High Volume – 100 people

Parking:

- Only Blue Skye personnel will be provided designated parking spaces onsite. A traffic control plan for parking will be implemented for Delaware Avenue with consultation with the Advisory Team.

Traffic Control:

- Vehicular traffic for deliveries, material haul-off, trash, etc. will be required to turn on Delaware Ave. and enter the site through the stabilized construction entrance (SCE) on H Street.
- When exiting the site, vehicles will pull out of the SCE, turn right through the parking lot and drive south toward I Street.
- Any activities requiring traffic control signage and personnel in public space will be provided.
-

Onsite Activities Summary:

- Preconstruction Activities:
Blue Skye will start onsite in early October 2017 after tenant move-out currently scheduled for September 30, 2017, to commence securing the site including installation of security fencing, site/security lighting, pest control, signage, and setting the jobsite office trailer. Abatement will be performed once the site is secured. Site lighting will be installed once demolition activities commence.

Site Utilization:



SITE UTILIZATION/LOGISTIC PLAN

BLUE SKYE CONSTRUCTION

WARD 6 SHELTER
850 DELAWARE AVENUE, SE



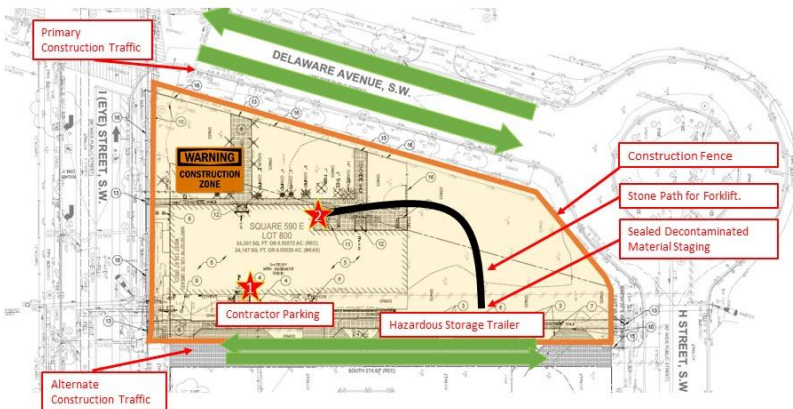
CONSTRUCTION ENTRANCE



TEMPORARY SECURITY/CONSTRUCTION FENCING

Hazardous Abatement & Demolition

Ward 6 Short Term Family Housing – Hazardous Abatement Plan 850 Delaware Avenue SW Washington, D.C. 20024



Questions? Email us at STFHprojects.dgs@dc.gov



Hazardous Communication

1. Hazardous abatement signage will be placed on each entrance into the building.
2. Hazardous Materials will be staged along the Hazardous storage trailer and stored in the trailer at the end of each work day.
3. Hazardous Materials will be sealed and labeled prior to being staged outdoors and placed in the storage trailer.
4. Only authorized personnel are allowed access within the construction fence at all times.
5. Once cleared by Department of the Energy & Environment the demolition will commence.

★ Decontamination points of sealed materials to the staging area to be stored in the Hazardous Storage Trailer.

★ Decontamination points of personnel prior to leaving the site.

- Hazardous abatement signage will be placed on each entrance into the building.
- Hazardous Materials will be staged along the Hazardous storage trailer to be stored in the trailer at the end of each workday.
- Hazardous Materials will be sealed and labeled prior to being staging outdoors and placed in the storage trailer.
- Only authorized personnel allowed access within the construction fence at all times.
- Once cleared by Department of the Energy & Environment demolition will commence.
- Decontamination points of sealed materials to the staging area to be stored in the Hazardous Storage Trailer.
- Decontamination points of personnel prior to leaving the site.
- We will install a Fence Screen and use water spray will during the demolition phase to mitigate dust leaving the site.
- The contractor will also perform street cleaning as needed in the event that the dust or dirt leaves the site.

End of Construction Management Plan.