

19TH & LAMONT COMMUNITY MEETING CONSTRUCTION KICK-OFF

October 20, 2021

19th & LAMONT



MEETING AGENDA

- Welcome / Rules of the Road
- Project Recap
- Construction Schedule
- Summary of Changes to Design
- Q & A
- 'Friends of 19th & Lamont' group information
- Contact Information

RULES OF THE ROAD

Please...

- Keep your microphone on mute during the presentation.
- Use the chat feature to ask questions or provide comments which will be read during the “Question Breaks”.

The chat function is located at the bottom of your screen and looks like a “thought” cloud symbol.

- Submit your question / comment to “Everyone” so the design team can see them and for documentation purposes.
- We’ll do our best to answer all questions, but if a question is not answered, DPR is tracking all questions and will create a Q/A document to be shared after the meeting.
- Meeting is being recorded.

PROJECT RECAP

- | | |
|---|-----------------------------------|
| • Community Listening Session | May 21, 2020 |
| • Concept Design Phase | May-June 2020 |
| • Community Meeting to Review Concept Designs (3) | July 16,2020 |
| • Schematic Design Phase | July –Aug 2020 |
| • Community Meeting to Review Schematic Design | October 19, 2020 |
| • Design Development, Construction Documents & Permitting | Fall 2020-
Winter 2021 |
| • CFA and Public Space Approval | April-May 2021 |
| • Bid Award | September, 2021 |

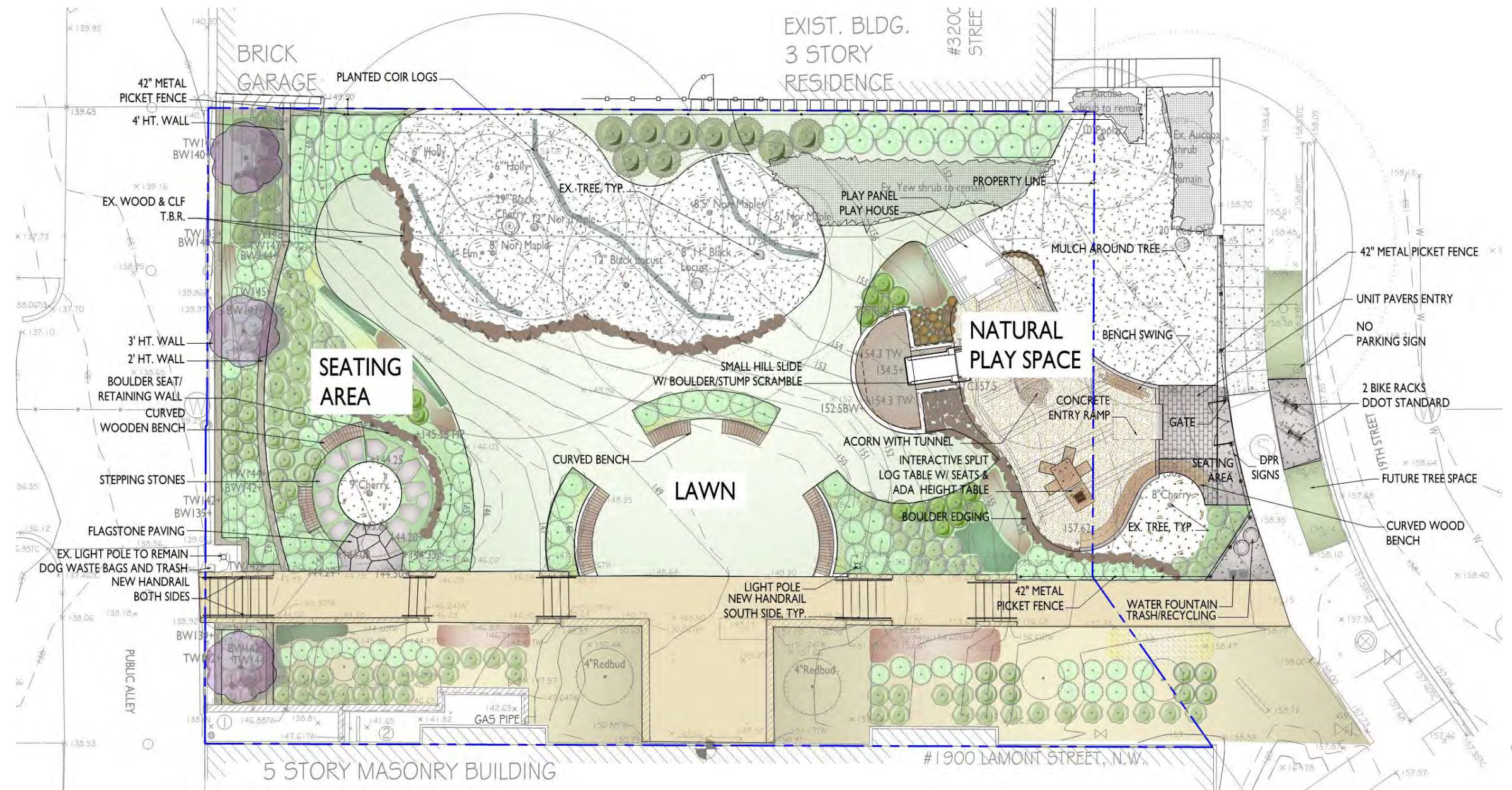
CONSTRUCTION

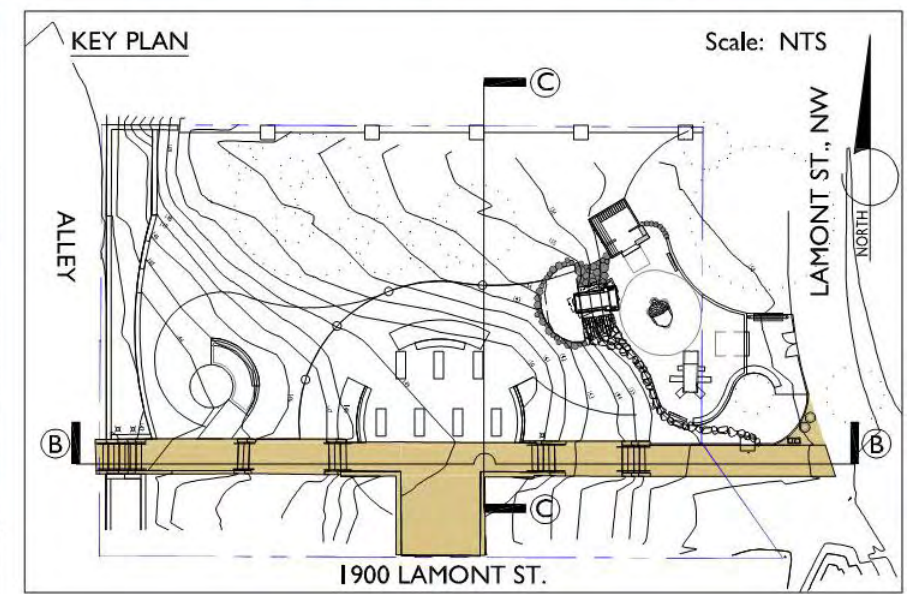
- Construction Kickoff **November 2021** | Inicio de la construcción **Noviembre, 2021**



- Construction Completion **May 2022*** | Finalización de la construcción **Mayo 2022***

** Weather and supply chain pending / Dependerá de las condiciones climáticas y de la cadena de suministro.*









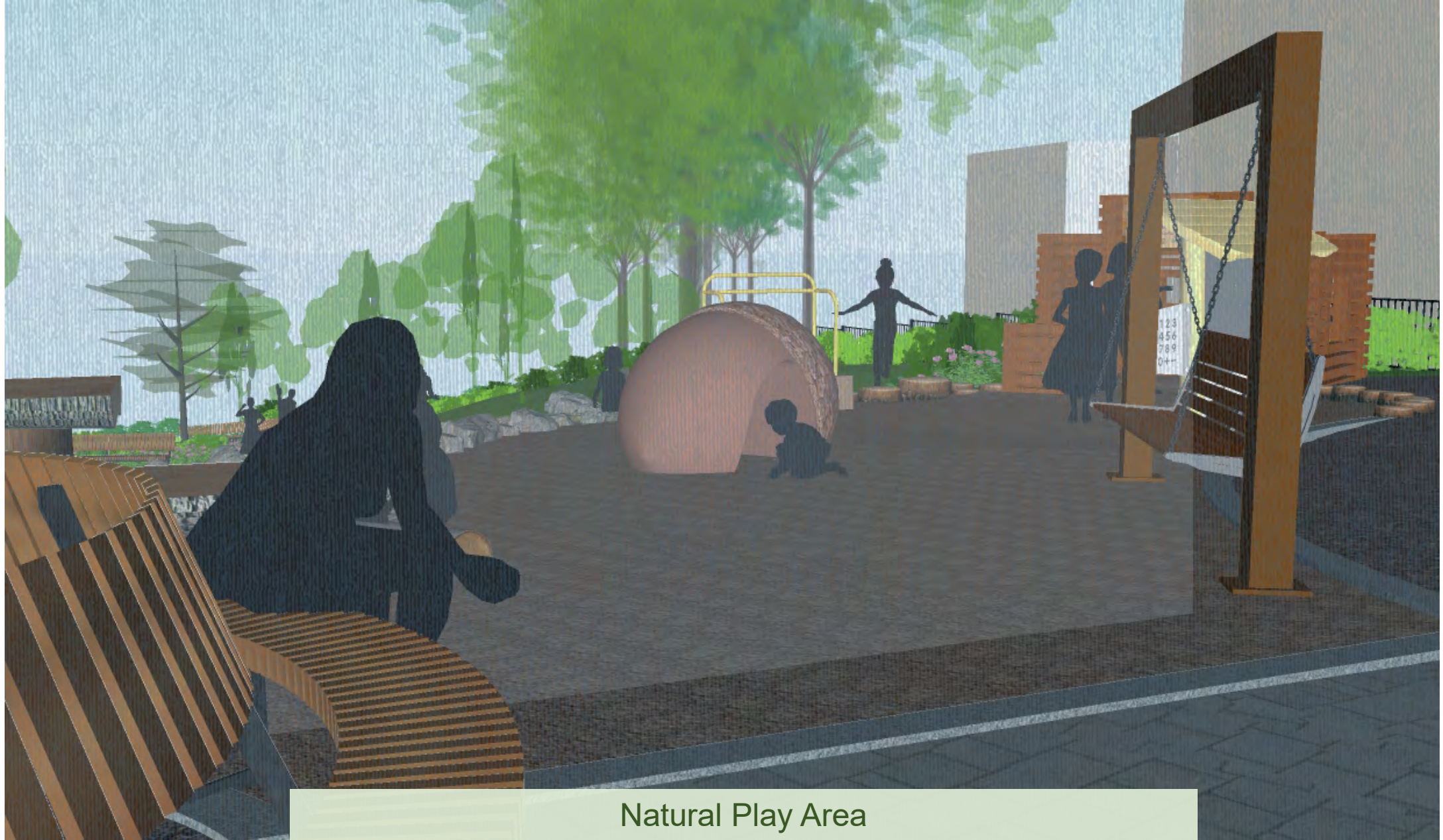
Lower Seating Area



Lawn Area and Embankment Slide



View Through Playground From 19th and Lamont Intersection



Natural Play Area



Hill Slide



Play house

Planting



- Native and adapted
- Pollinator friendly
- Low maintenance
- Small plant material near existing trees
- Mulch at Red Oak tree
- Reduce turf grass
- Working with Urban Forestry and consulting arborist on techniques for planting near trees



PLANT PALETTE

UNDERSTORY TREES CORNUS X RUTGAN



CORNUS RUTGAN



AESCULUS PARVIFLORA



CLETHRA ALNIFOLIA



HYDRANGEA ARBORESCENS

SHRUBS

AESCULUS PARVIFLORA
CLETHRA ALNIFOLIA
HYDRANGEA ARBORESCENS
HYDRANGEA QUERCIFOLIA
ILEX GLABRA
ILEX VERTICILLATA
ITEA VIRGINIANA
RHUS AROMATICA 'GRO LOW'
VIBURNUM DENTATUM
VIBURNUM NUDUM



HYDRANGEA QUERCIFOLIA



ILEX GLABRA



ILEX VERTICILLATA



ITEA VIRGINIANA



RHUS AROMATICA 'GRO LOW'



VIBURNUM DENTATUM



VIBURNUM NUDUM

PERENNIALS, GRASSES & GROUNDCOVERS

DRYOPTERIS INTERMEDIA
ECHINACEA SPP.
ERAGROSTIS SPECTABILIS
EURYBIA DIVARICATA
HEUCHERA VILLOSA
PACKERA AUREA



DRYOPTERIS INTERMEDIA



ECHINACEA SPP.



ERAGROSTIS SPECTABILIS



EURYBIA DIVARICATA



HEUCHERA VILLOSA



PACKERA AUREA

Large Hollow Acorn
part of the Imagocast line



Installed in playground



17'-1"
18'-4"
4'-6"
5'-0"

Flat stem with lock plate

Large Hollow Acorn
This whimsical piece offers natural charm and playability with a climbable surface and fun crawl through space. Kids will go "nuts" over this fun and imaginative piece. Comes in large and medium sizes with and without hollow space.

Material: PolyFiberCrete®
Finish/Texture: Light sandblast
Anti-graffiti: Acrylic seal

Color Options:
Standard pictured.
Custom available.
Full or partial mosaic available.
Colors may vary from pictures.



For Ages: 2-12
Estimated Users: 6
Footings: Integral to part
Highest Designated Play Surface: 4'-0"
Installation: Install using two (2) straps under part.

1 ACORN CLIMBER WITH TUNNEL
IMAGE





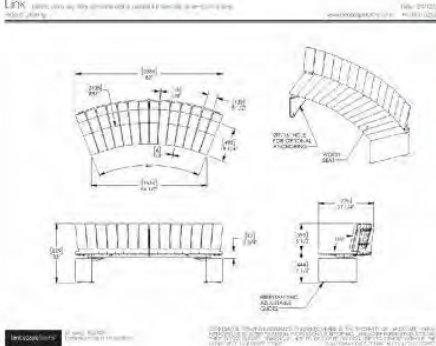

2 BOULDER AND STUMP EDGING/SCRAMBLES
IMAGES


3 CURVED WOOD BENCH
CUT SHEET/IMAGES

SCALE: NTS

NOTES:
CURVED BENCH IN CUSTOM RADIUS
BACKREST
NO ARMS
METAL SUPPORTS ANCHOR TO FOOTINGS
WOOD: DOMESTICALLY SOURCED
THERMALLY MODIFIED ASH



1/2" X 1/2" X 1/2" STEEL POST
1 1/2" X 1 1/2" STEEL BAR, TYP.
1/2" SOLID STEEL PICKET, FULLY WELDED TO RAILS
4" MAX O.C.
SLOPE SHOULDERS FOR DRAINAGE
3000 PSI CONCRETE FOOTING
UNDISTURBED OR COMPACTED SUBGRADE TO 95 %



4 SOLID STEEL PICKET FENCE
SECTION



FLAT STEEL POST CAP
1 1/2" STEEL POST
1 1/2" X 1 1/2" STEEL BAR, TYP.
1/2" SOLID STEEL PICKET, FULLY WELDED TO RAILS
4" MAX O.C.
SLOPE SHOULDERS FOR DRAINAGE
3000 PSI CONCRETE FOOTING
UNDISTURBED OR COMPACTED SUBGRADE TO 95 %

8'-0" MAX. SEE PLAN
4" MAX.
1 1/2" SQ. STEEL POST WITH WELDED BASE PLATE BY MANUFACTURER FOR SURFACE MOUNT
SS WASHER
3 1/2" LONG, 5/16"-16 STAINLESS STEEL EXPANSION WEDGE ANCHOR. CORE DRILL 3 1/2" INTO CONCRETE. INSERT ANCHOR AND TIGHTEN TO SECURE BASE PLATE.
4" CONCRETE PAVING SEE 7/L500



5 WATER FOUNTAIN (DPR STANDARD)
CUT SHEET/IMAGES

QUANTITY: (1)
COLOR: EVERGREEN

6 TRASH/RECYCLING (DPR STANDARD)
CUT SHEET/IMAGES



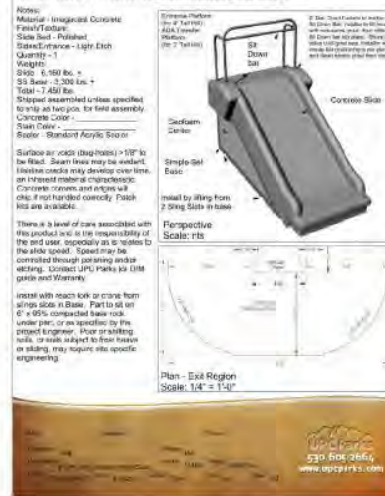
7 PEDESTRIAN LIGHT POLE (DDOT STANDARD WASHINGTON GLOBE)
IMAGES



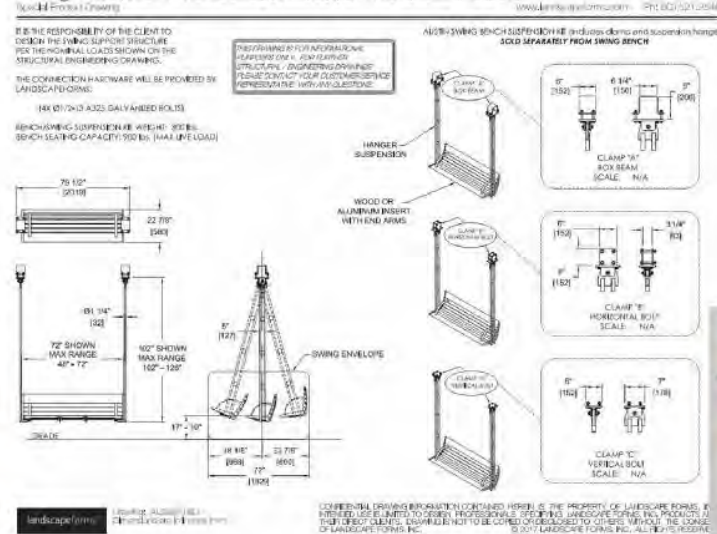
8 STANDARD DPR SIGNAGE
SECTION

- (1) DPR Standard Park ID Sign Panel 5'-0" X 2'-6"
- (1) DPR Standard Park Hours/Regulations Sign
- (1) DPR Standard Park Hours/Regulations Sign-Spanish

4' Tail Double Wide - Simple-Set - Embankment Slide 3' Tail ADA Transfer Station Accessible Slide



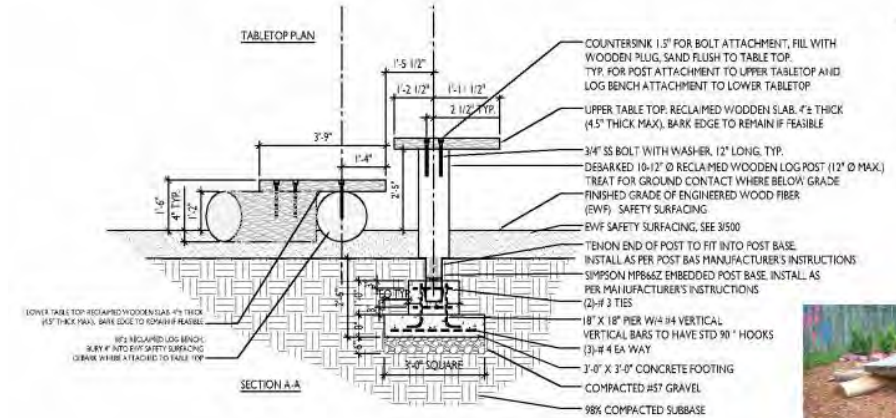
Swings



1 CONCRETE EMBANKMENT SLIDE IMAGES

2 CUSTOM BENCH SWING IMAGES

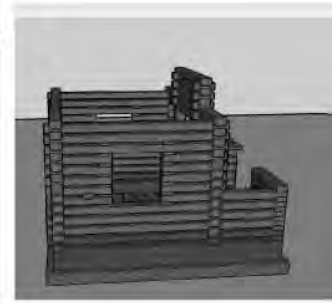
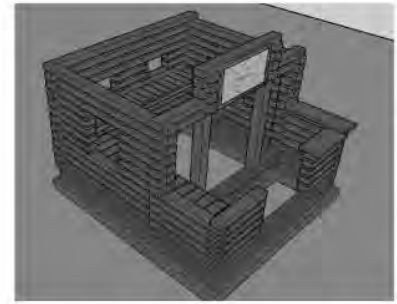
3 CHALKBOARD PLAY PANEL IMAGES



- NOTES:
- LOG TABLE AT TWO HEIGHTS
ADA HEIGHT: 28" CLEARANCE UNDER TABLE
CHILD HEIGHT: 18" HEIGHT
 - ADA HEIGHT TO INCLUDE ETCHED CHESS BOARD
 - CHILD HEIGHT TO INCLUDE MIN. 2 INTERACTIVE ACTIVITIES ENGRAVED IN WOOD: CHESS, MANCALA, ALPHABET, ETC
 - DC URBAN FORESTRY TO SUPPLY ALL WOOD PER SIZE SPECIFICATIONS
 - ALL WOOD TO BE TREATED WITH LOW VOC NATURAL WOOD FINISH



- NOTES:
- ALL WOOD (DIMENSIONAL LUMBER) TO BE FURNISHED BY DC URBAN FORESTRY
 - HOUSE TO BE SET ON 6" GRAVEL BASE, ENGINEERED WOOD FIBER TO CONTINUE INTO HOUSE
 - COUNTERSINK AND FILL ALL HOLES WITH WOOD PLUGS TO MATCH
 - ALL WOOD TO BE FINISHED WITH LOW VOC NATURAL WOOD FINISH
 - ALL ENDS TO BE SEALED WITH END SEAL
 - CUSTOM WOOD ETCHED "WELCOME" SIGN IN MULTIPLE LANGUAGES 38" X 22"



4 CUSTOM WOOD LOG TABLE SECTION/IMAGES

5 CUSTOM WOOD PLAY HOUSE IMAGES

Site furnishings

Seating



Trash/recycling



Water fountain



Fencing

Metal Picket Fence
42" height
DPR Standard-Three rail



Lighting



POST TOP LED ENGINE
1030 Flat Array



Photometric
Performance



Superior Thermal
Management



Back Light
Control



Long Useful
Life



Up Light
Control



Dimmable



Glare Control



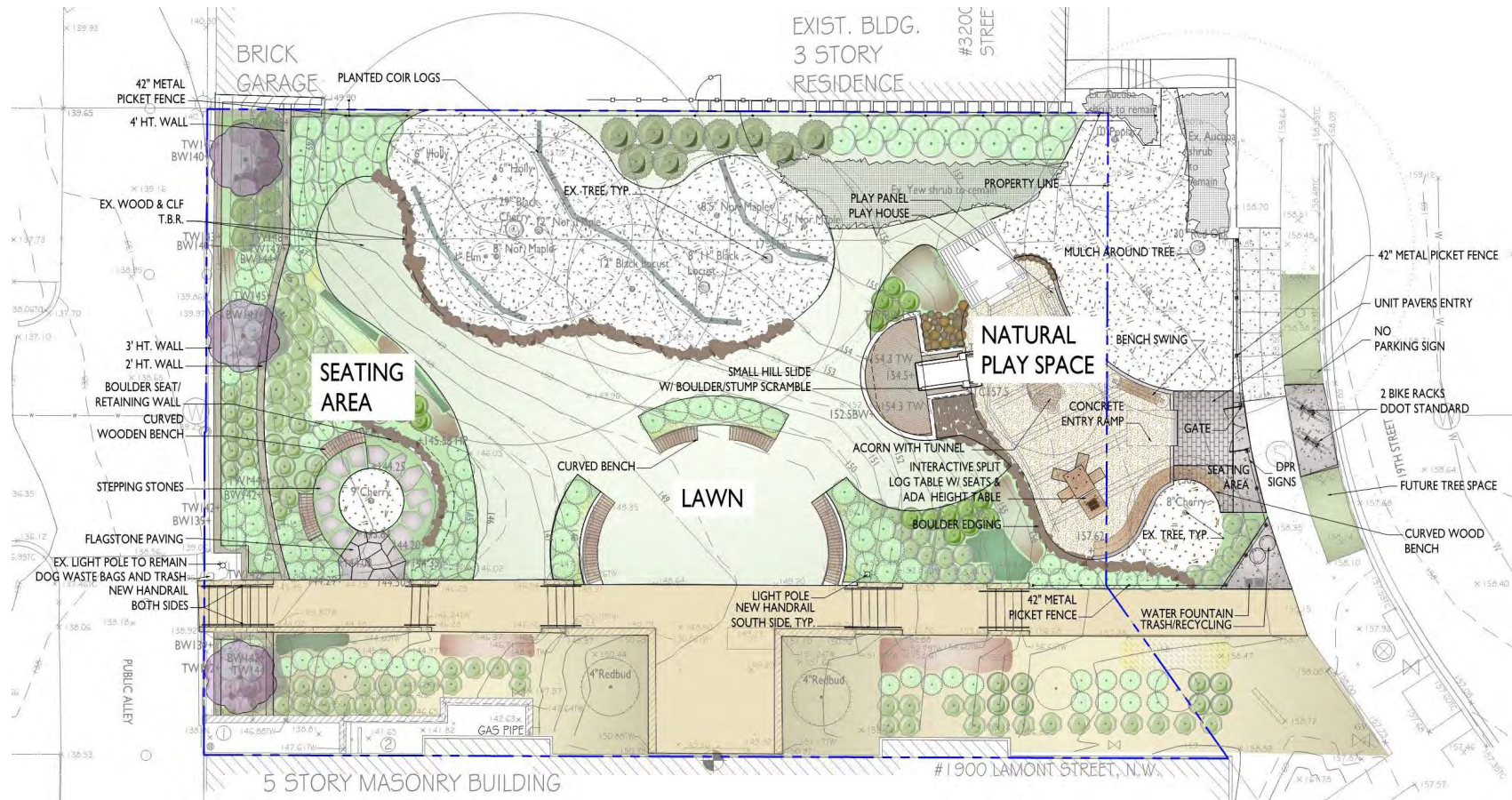
Sustainable
Technology



- Relamp pole at base of stairs with energy efficient LED 2700K. Pole to remain
- New DDOT standard Washington Globe pole with 2700K Flat Array Lamp at Lawn

Q & A

- *PLEASE PUT QUESTIONS IN THE CHAT*



Friends of 19th and Lamont Park

- A “Friends of the Park” group has been established to support the park over time. A project of Green Spaces for DC. Started by Mt. Pleasant resident Josh Loria.
- A great way for the community to support the park over time. The Friends’ group will organize community events, planting and cleanup projects, and raise funds to support the park over time.
- Josh is looking for help to kick off this group!
- To join or learn more information, email 19thandlamont@gmail.com or visit <https://greenspacesfordc.org/friends-of-19th-and-lamont>

POINTS OF CONTACT

David Wooden, Landscape Architect

DC Department of Parks and Recreation

david.wooden1@dc.gov

202.285-4030

Wayne Gore

**Community Outreach Coordinator - External
Affairs**

DC Department of General Services

wayne.gore@dc.gov

202.717.4228

Project Website: www.dgs.dc.gov/page/19th-and-lamont