

# W Street Park

## Community Meeting



Wednesday, February 12, 2020



## HELP PLAN THE FUTURE OF DC'S PARKS AND RECREATION!

**SATURDAY, MARCH 14**

Kick-Off Meeting  
11:00 AM – 1:00 PM  
Edgewood Recreation Center  
300 Evarts Street, NE

**WEDNESDAY, MARCH 18**

2nd Community Meeting  
6:30 PM - 8:30 PM  
Barry Farm Recreation Center  
1230 Sumner Road, SE



**TUESDAY, MARCH 24**

3rd Community Meeting  
6:30 PM - 8:30 PM  
King Greenleaf Recreation Center  
201 N Sreet, SW

**SATURDAY, MARCH 28**

4th Community Meeting  
10:00 AM-12:00 PM  
Glover Park Recreation Center  
4100 Calvert Street, NW

# Rules of the Road:

Welcome! Thank you for your participation.

- Please Hold all questions until the end of the presentation.
- Sign-In Before you leave.

## Agenda:

1. Team Introduction
2. Project Update
3. Existing Site
4. Concepts
5. Sequence
6. Community Feedback
7. Begin Permit Set Design
8. Contact Information



# Project Update:

## Scope of Work Based on Feedback from Community:

- Achieved New Nature Inspired Playground Equipment
- Use of Engineered Wood Fiber (EWF) Surface
- Site Furnishings (New Benches, Tables, and Recycling Bins, etc.)
- Stormwater Control and Mitigation
- New Site Signage
- Maintain Existing Trees and Natural Elements
- Improve the Open Field
- Create ADA Accessible Route to Playground
- Improve Alternate walking/hiking trails
- Fence Playground with clear view fencing
- Add a Drinking Fountain
- Picnic Area (ADA Accessible)
- Pre-Fabricated Pedestrian Bridge
- Private Path to Seating and Rest Area



Example: Nature Inspired Treehouse



# Community Engagement Process :

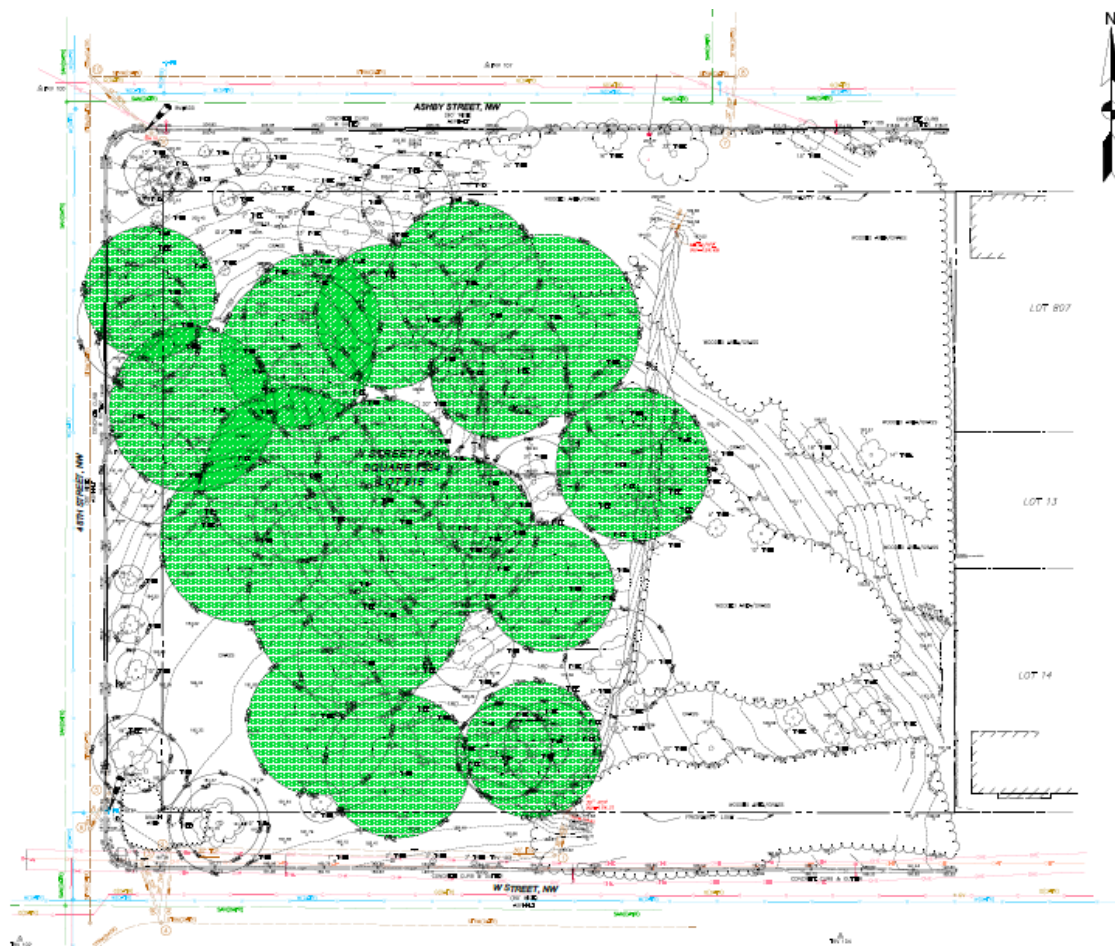


- Community Meetings
- DGS webpage for Foxhall Park:  
<https://dgs.dc.gov/page/foxhall-playground>
- Email updates (please sign-in with legible email address)

# Existing Conditions







# Existing Conditions Plan

With Heritage Trees  
And Critical Root Zones  
(CRZ) Shown

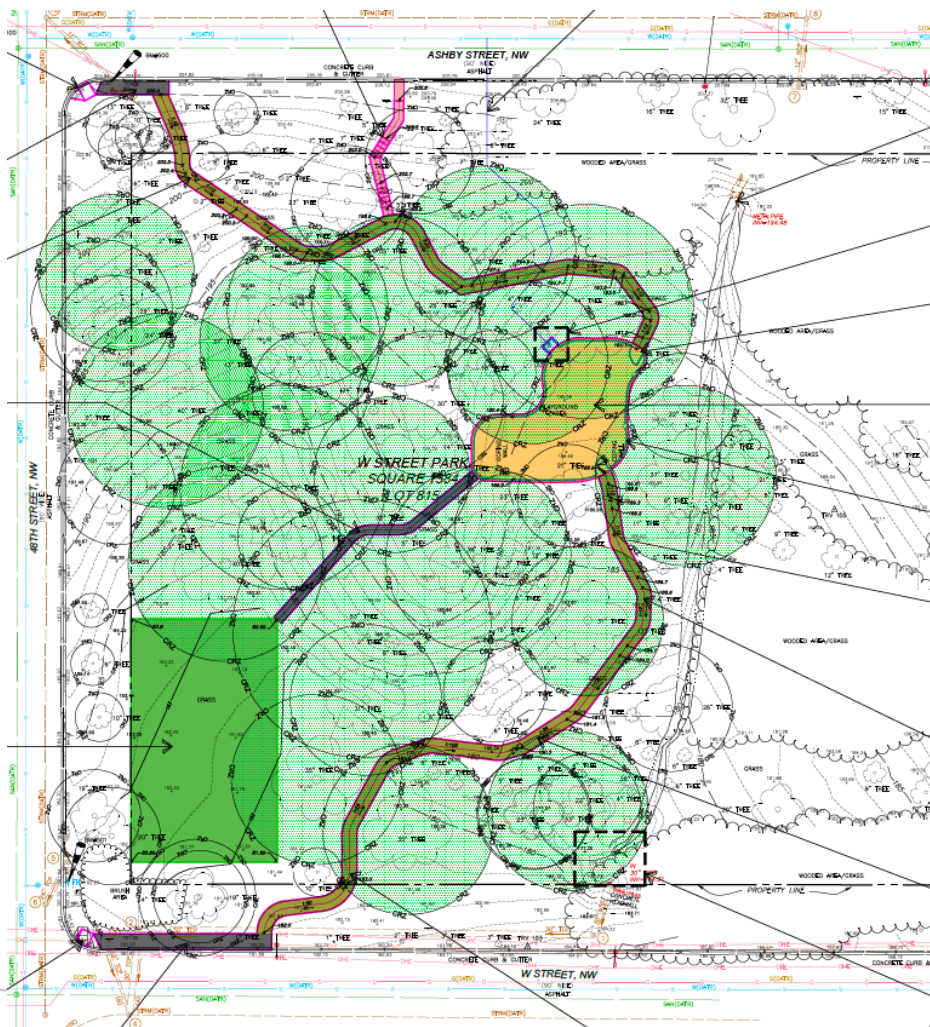
# Concept Layout 1

## Pros:

- Play Area in Same Location
- Trees Are Protected
- Field Grading is Possible
- Access via Boardwalk is Possible

## Cons:

- Sidewalk at W St. Not Accepted by DDOT
- Boardwalk in Public Space Not Acceptable





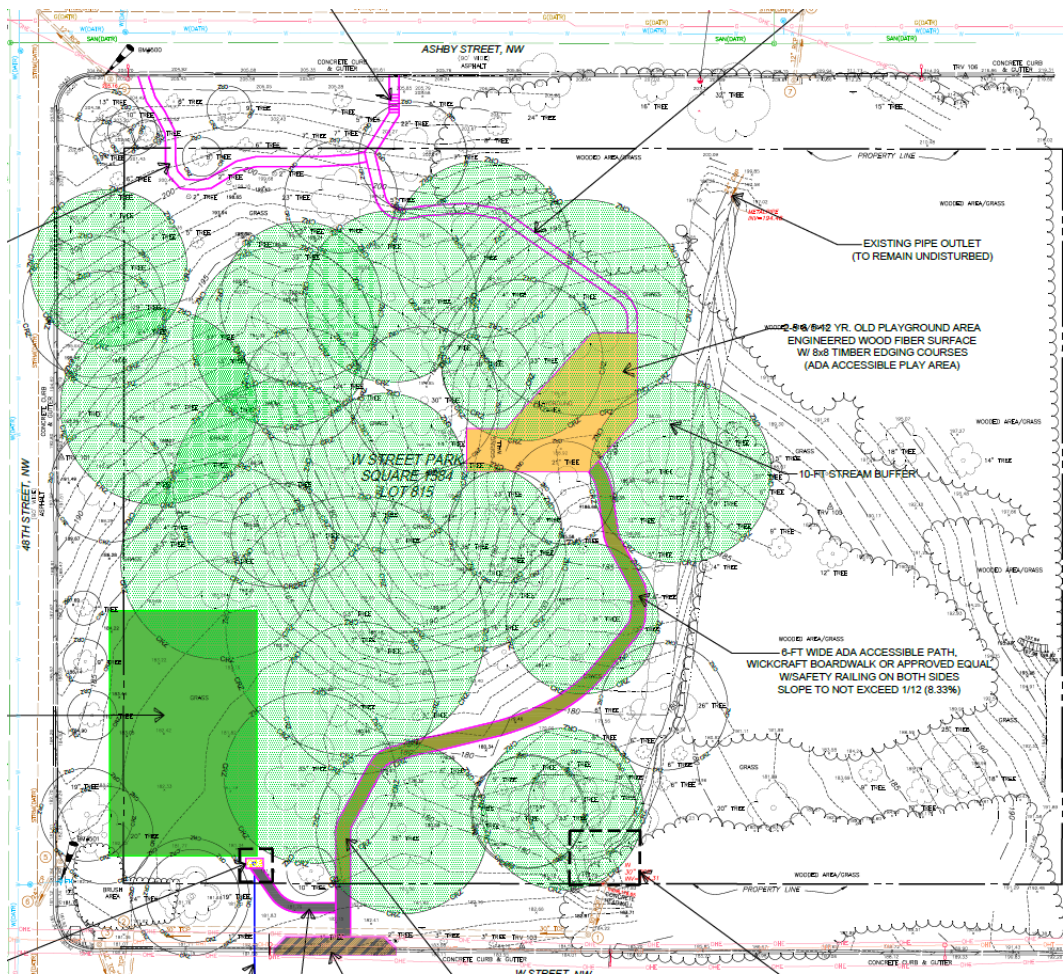
# Concept Layout 2

## Pros:

- Play Area in Same Location
- Trees Are Protected
- Field Grading is Possible
- Direct Access to Boardwalk From W St.
- Access is DDOT Approved

## Cons:

- Access From W Street concerns from community
- Stream Buffer Conflict with Boardwalk



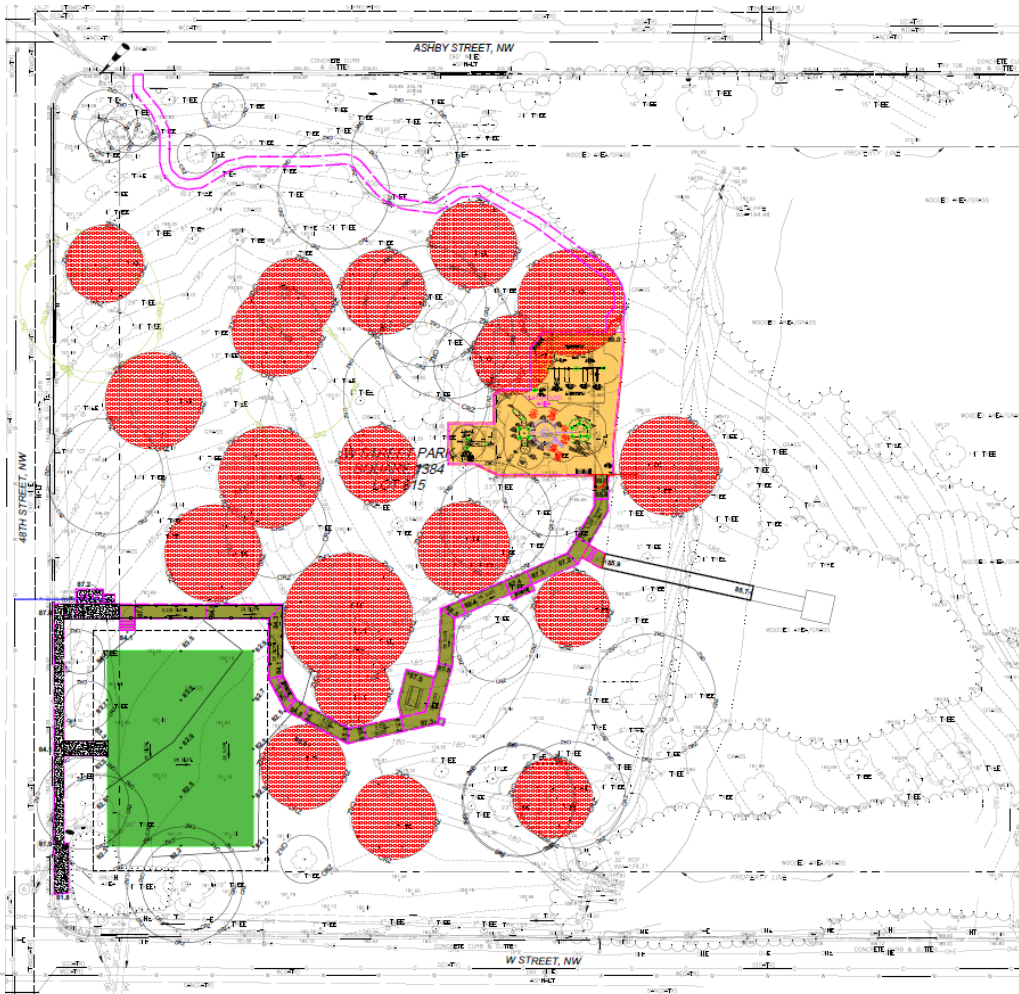
# Concept Layout 3

## Pros:

- Play Area in Same Location
- Trees Are Protected
- Field Grading is Possible
- Access via Boardwalk is Possible
- Boardwalk Away From Stream Buffer
- No Access From W St.
- Public Sidewalk Provided On 48<sup>th</sup> St.
- Bridge to Rest Area Possible

## Cons:

- Boardwalk In Conflict With Sledding and Tree Roots
- Boardwalk Structure Overpowers Site (Bisects Site)





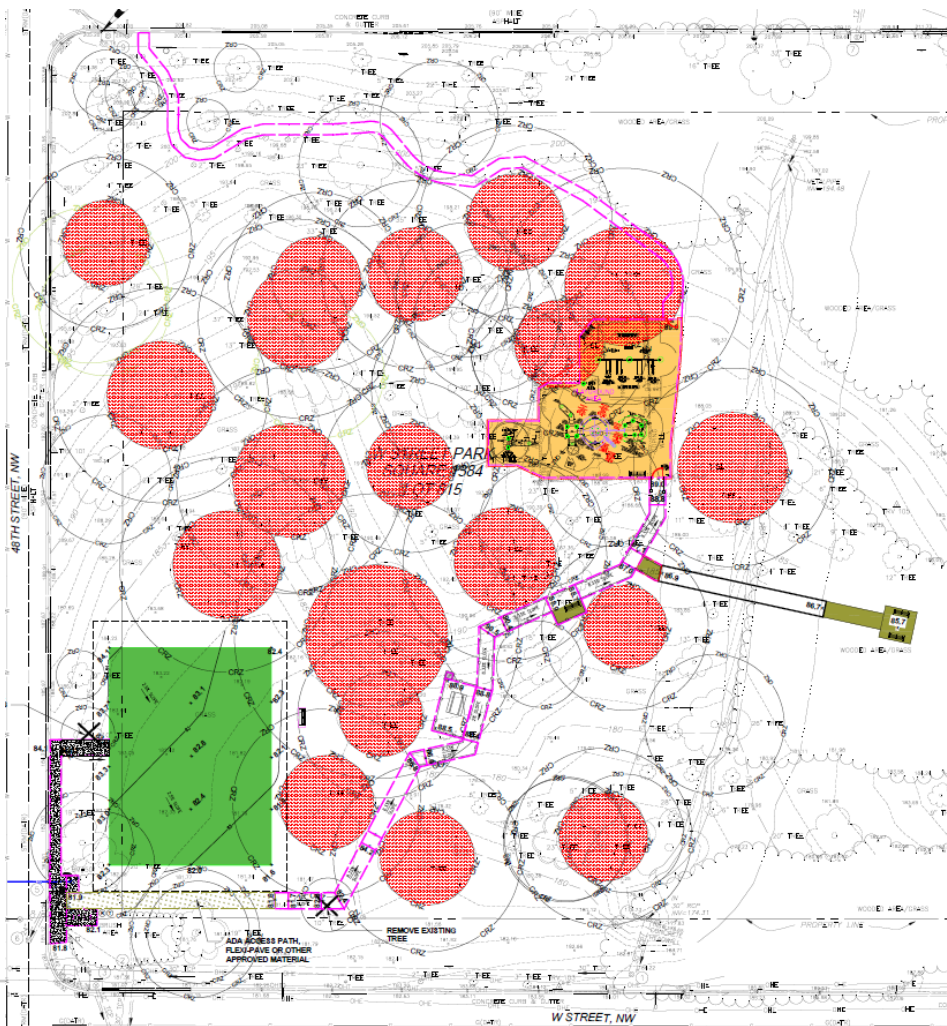
[illegible]

- Play Area in Same Location
- Trees Are Protected
- Field Grading is Possible
- Opens Up for Use of Sledding Hill
- Boardwalk Away From Stream Buffer
- No Access From W St.
- Public Sidewalk Provided on 48<sup>th</sup> St.
- Bridge to Rest Area Possible

- Boardwalk in Critical Root Zone.
- Urban Forestry Does Not Approve Grading over Critical Root Zone



# Concept Layout 5

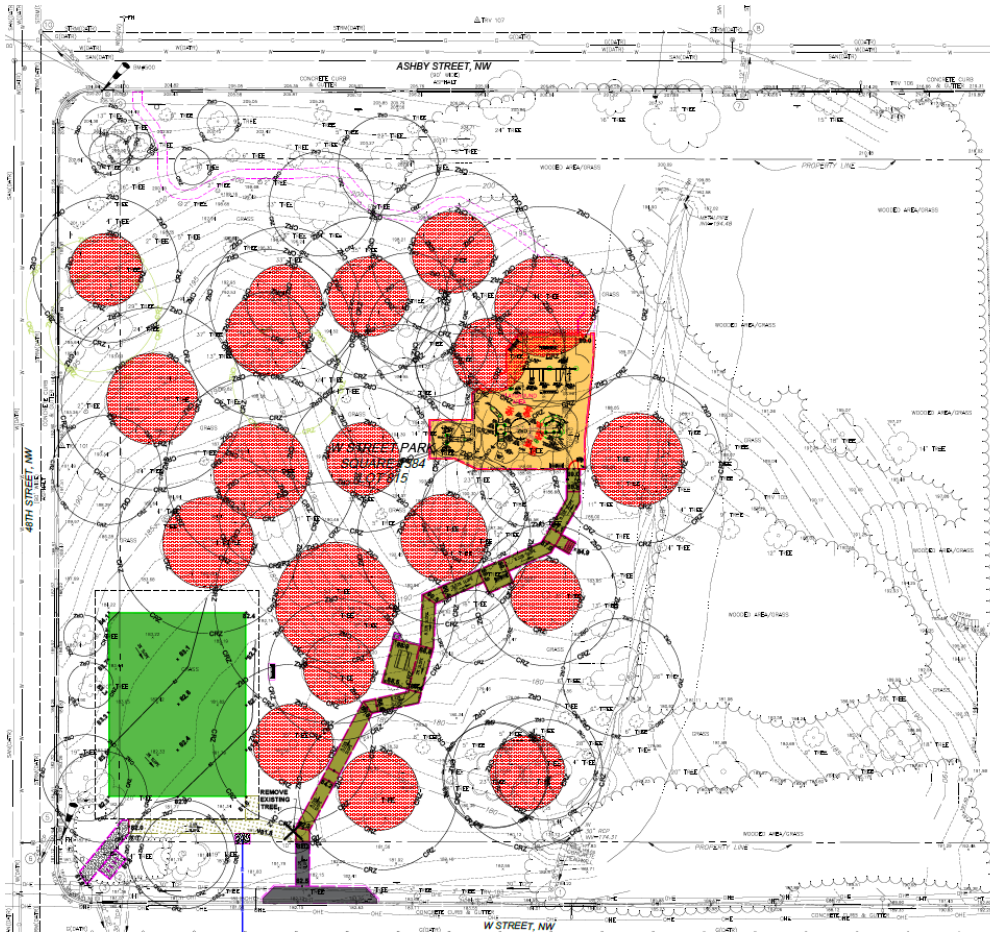


## Pros:

- Play Area is Same Location
- Trees Are Protected
- Field Grading is Possible
- Opens Up for Use of Hill
- Boardwalk Away from Stream Buffer
- No Access From W St.
- Bridge to Rest Area Possible

## Cons:

- 48<sup>th</sup> St. Partial Sidewalk Not Approved by DDOT



## Concept Layout 6

### Pros:

- Play Area is Same Location
- Trees Are Protected
- Field Grading is Possible
- Access via Boardwalk is Possible
- Opens Up For Use of Hill
- Access From Intersection Approved by DDOT
- W St. Access Approved by DDOT
- Urban Forestry Approved

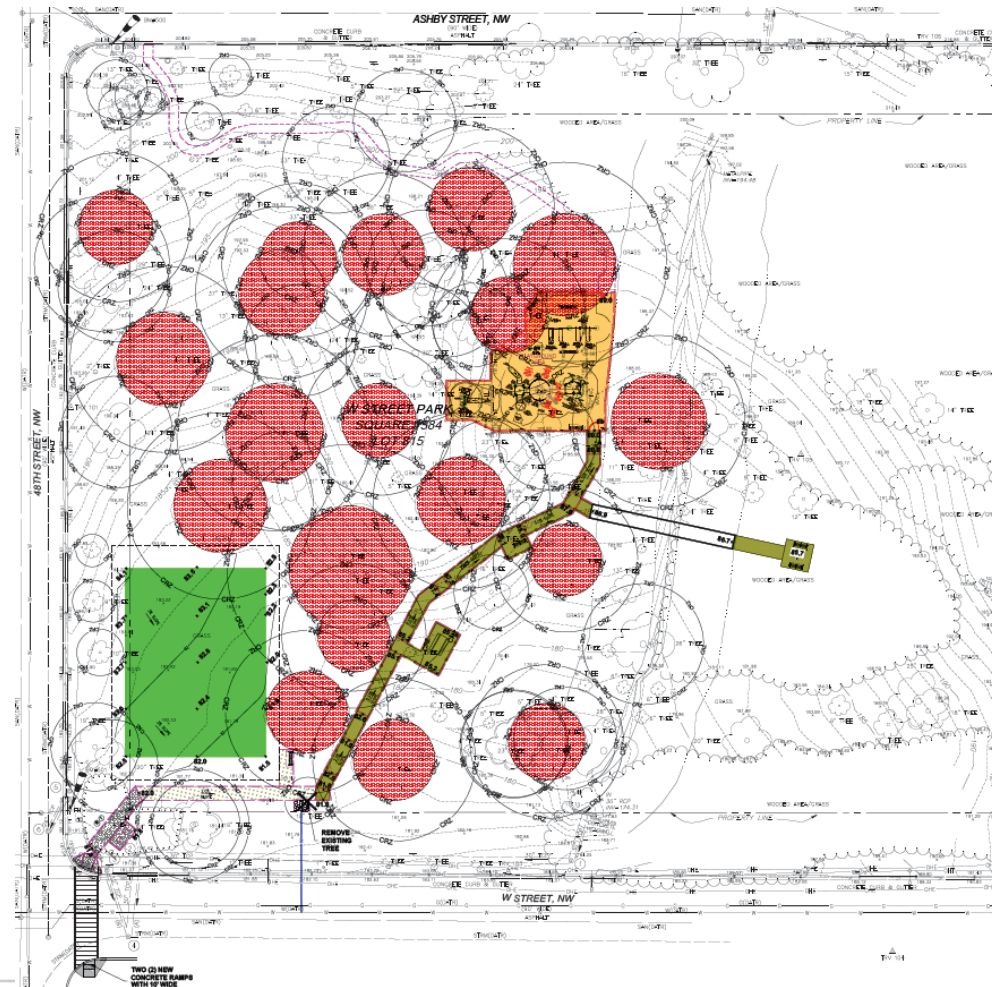
### Cons:

- Lay-By Parking on W St. Deemed in conflict with the community
- ADA Guidelines Do Not Require Lay-By Parking

# Final Layout

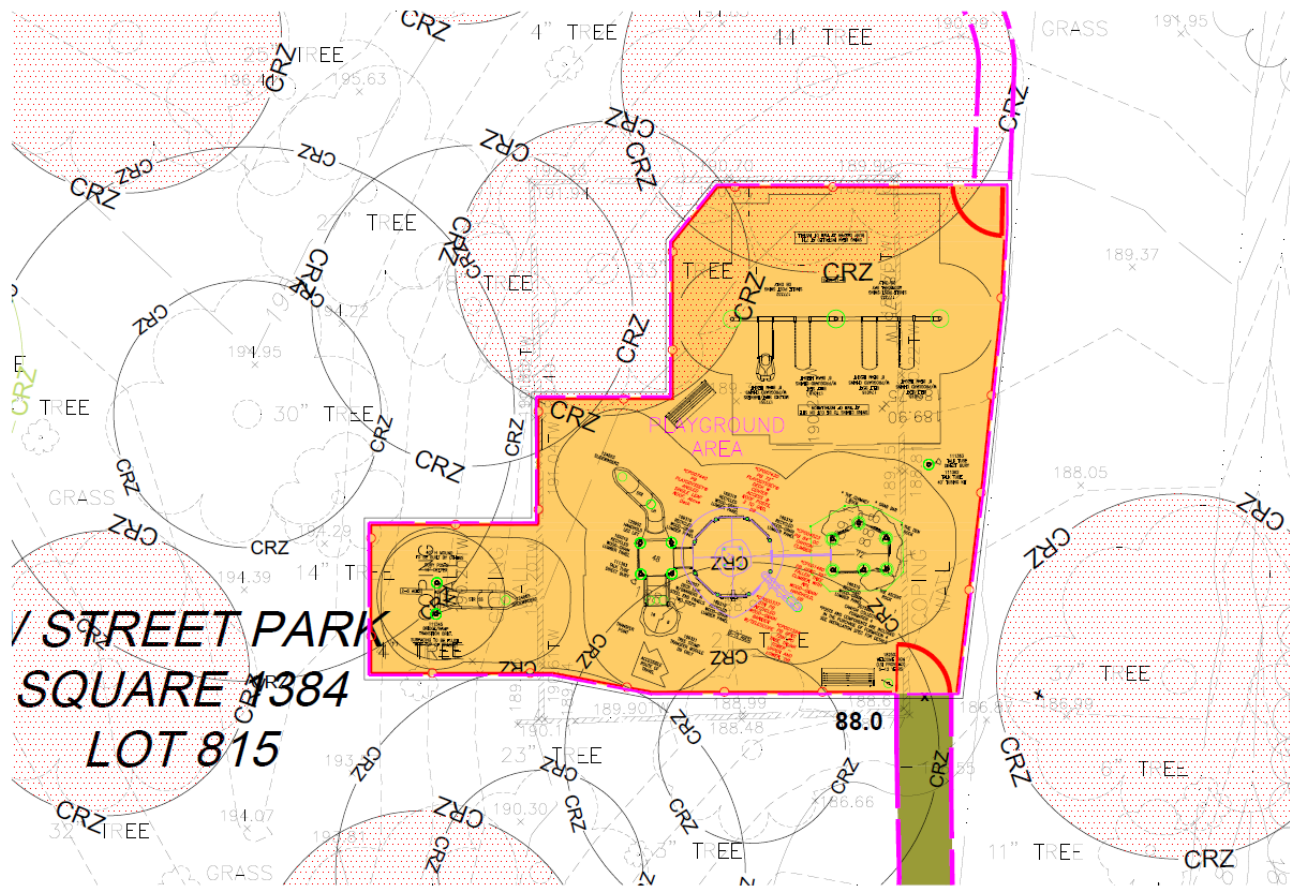
## Pros:

- Play Area is Same Location
- Trees Are Protected
- Field Grading is Possible
- Access via Boardwalk is Possible
- Opens Up For Use of Sledding Hill
- Access From Intersection Approved by DDOT
- W St. Access Approved by DDOT
- Urban Forestry Approved
- No Lay-By parking on W Street
- Improved Access from W Street Sidewalk
- Visitors can park on 48<sup>th</sup> Street.





# General Playground Equipment Layout



# Nature-Inspired Playground - Final





# Nature-Inspired Playground - Final

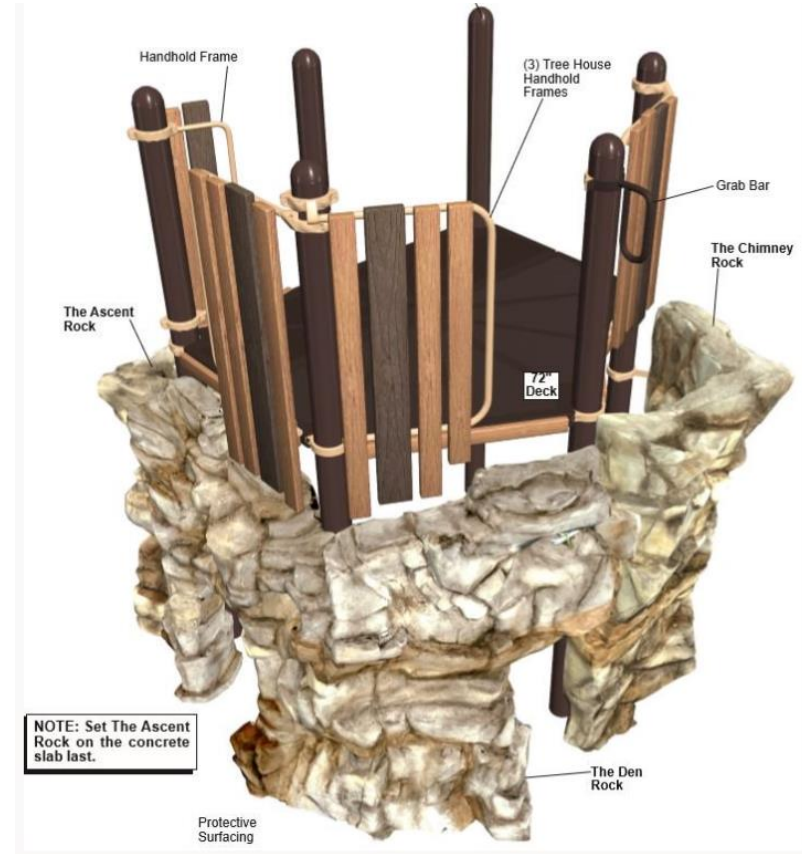




# Playground Characteristics:

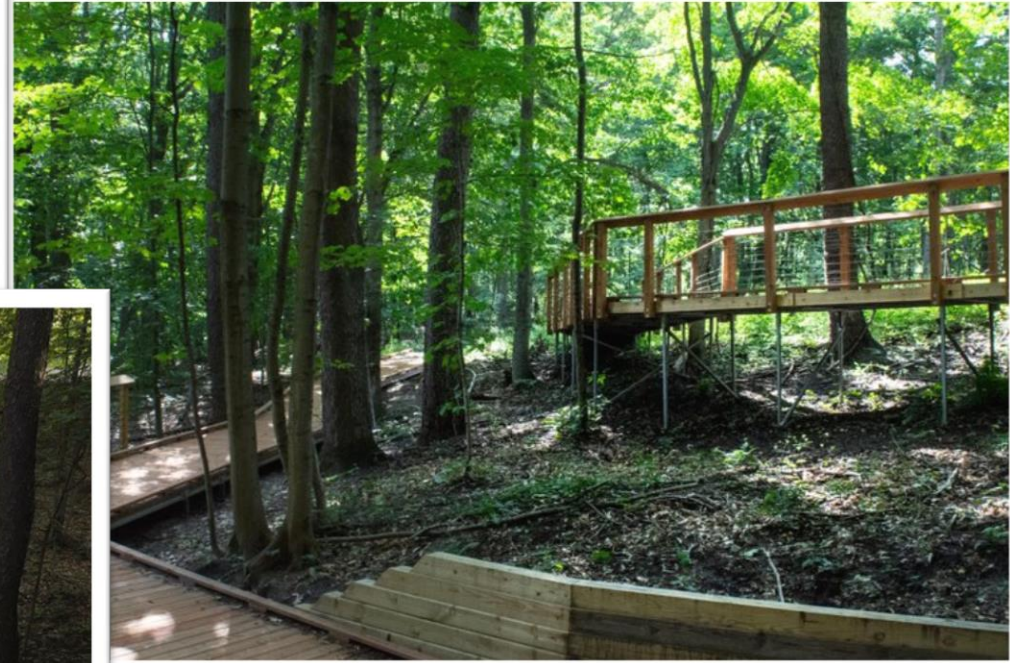
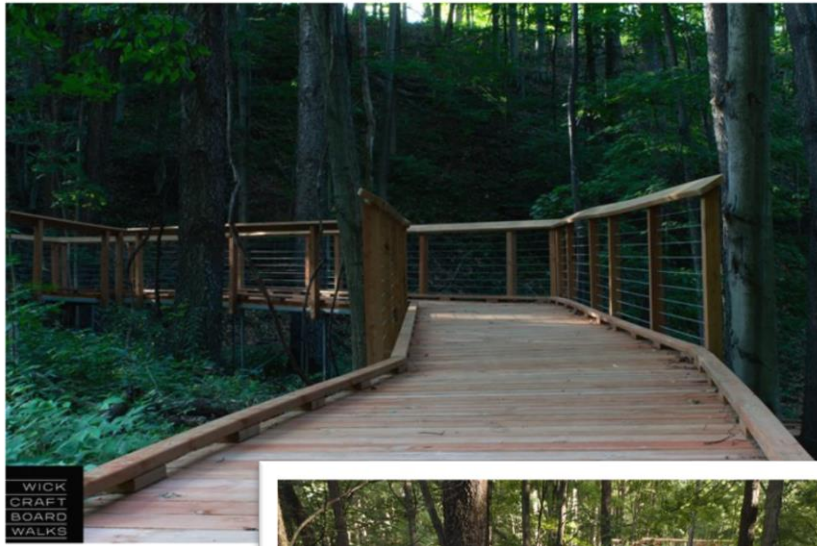
**Selected Option: Natural Aesthetic, Low Maintenance, Maximizes Swing Area, Embankment Slide**

**Summary: Minimize Impact to Trees, Nature Inspired, Range of Play Equipment for Different Age Groups, Incorporate Shade Elements, Incorporate Slides and Climbing Features**



NOTE: Set The Ascent Rock on the concrete slab last.

# ADA Boardwalk Examples





# Clear View Fencing Example





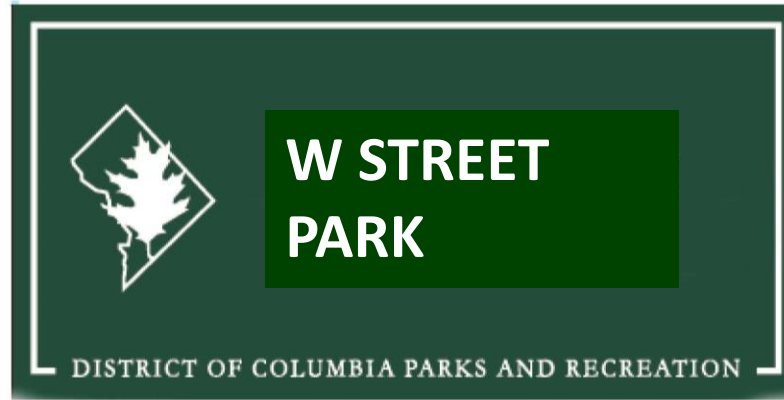
# Site Furnishings



# Picnic Pavilion Examples



# Park ID Sign Name Options





# Questions?



# Next Steps:

- This presentation will be sent to all attendees and will be posted to the DGS Capital Construction page at: <https://dgs.dc.gov/page/foxhall-playground>
- Finalize drawings for permits

# Contact Information

## Department of General Services (DGS)

Wayne Gore, Community Engagement and Outreach  
[wayne.gore@dc.gov](mailto:wayne.gore@dc.gov)

## Department of Parks & Recreation (DPR)

Peter Nohrden, ASLA / Project Manager  
[peter.nohrden@dc.gov](mailto:peter.nohrden@dc.gov)

