

Elevating the Quality of Life in the District



**PHOEBE HEARST ELEMENTARY SCHOOL MODERNIZATION
PROJECT UPDATES**
November 20, 2014





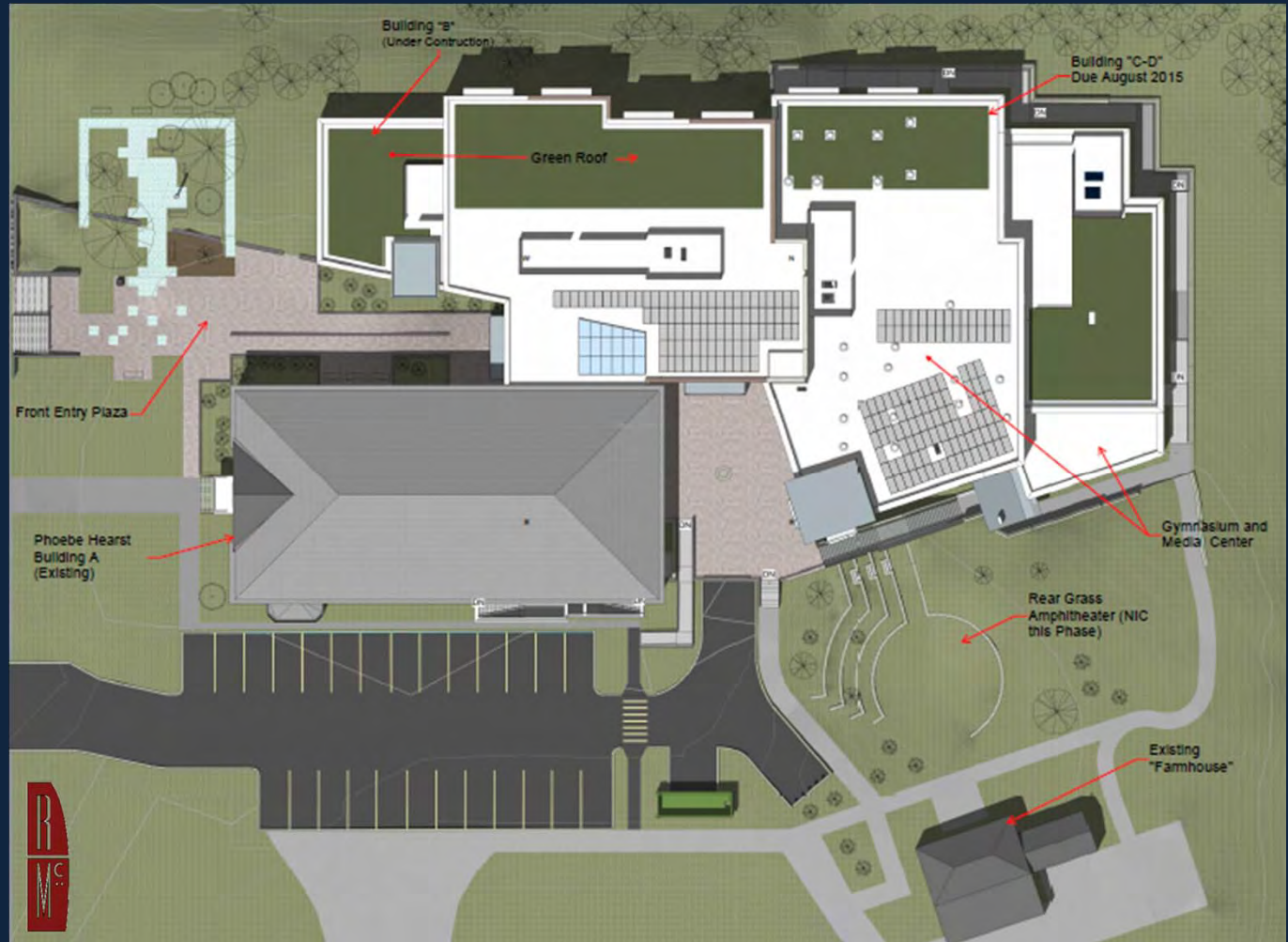
MEETING AGENDA

- Introductions
- Rules of the Road
- Design Update
- Building CD - Site Logistics
- Q&A
- Next Steps

Elevating the Quality of Life in the District



SITE PLAN



Elevating the Quality of Life in the District



SOUTH EAST AERIAL VIEW



R. McGhee &
Associates, PLLC
P.O. Box 1000
Washington, DC 20004
www.rmcghee.com

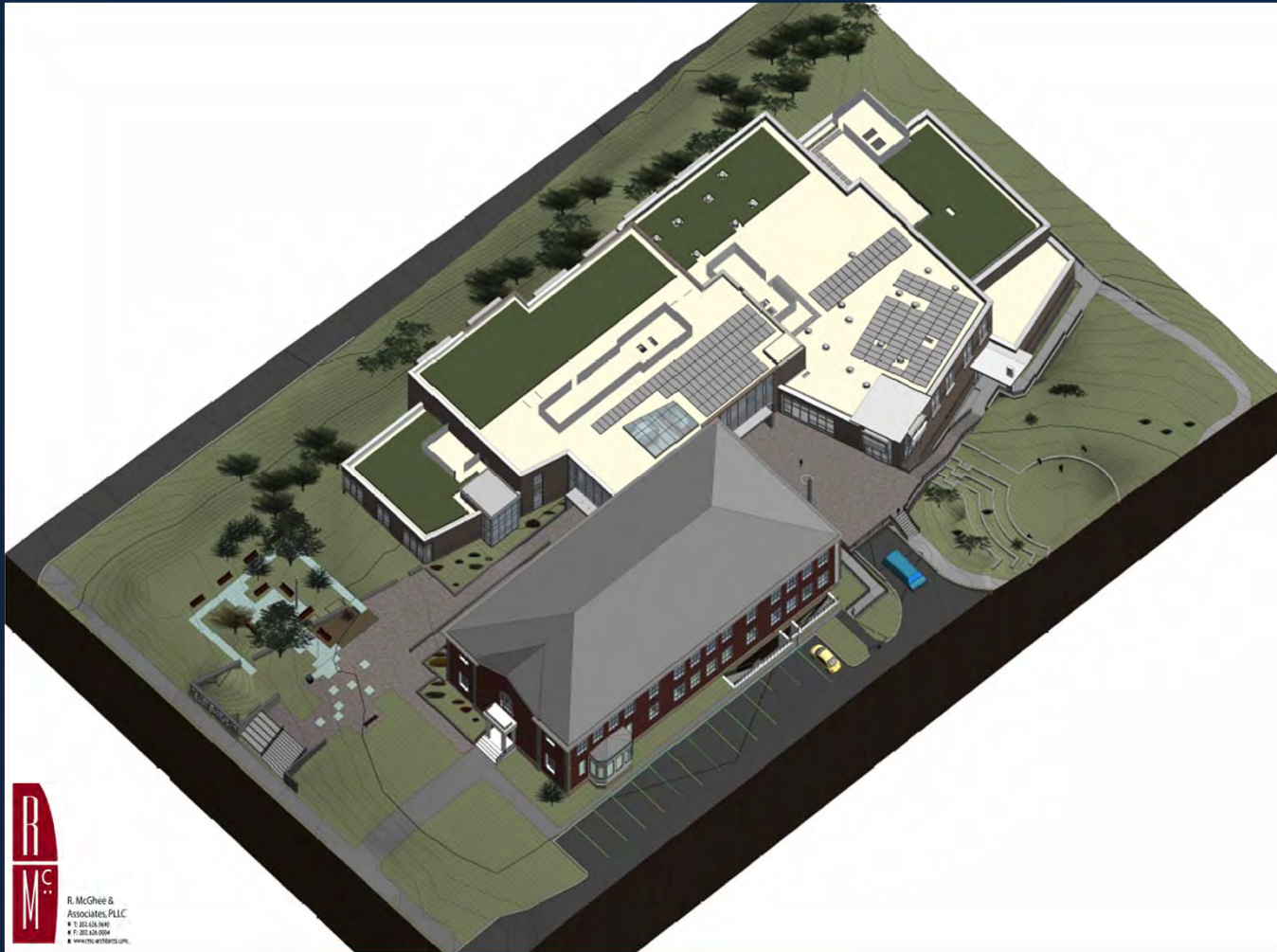
elev★te



Elevating the Quality of Life in the District



SOUTH WEST AERIAL VIEW



R. McGhee &
Associates, PLLC
• T. 202.426.5846
• F. 202.426.2024
• www.rmcghee.com

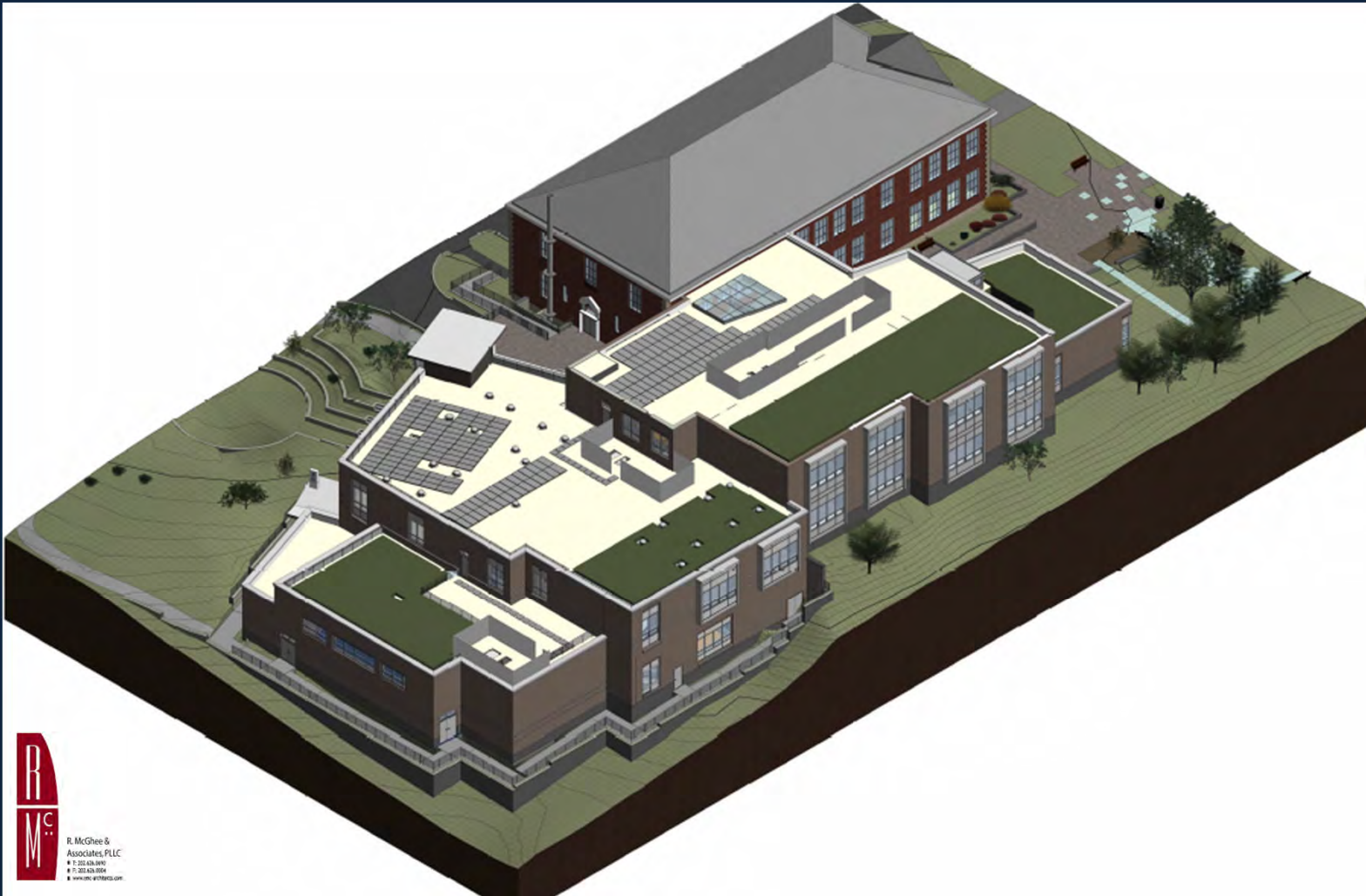
elev★te



Elevating the Quality of Life in the District



NORTH EAST AERIAL VIEW



R. McGhee &
Associates, PLLC
7 202.439.9910
17 202.439.9914
www.rmcghee.com

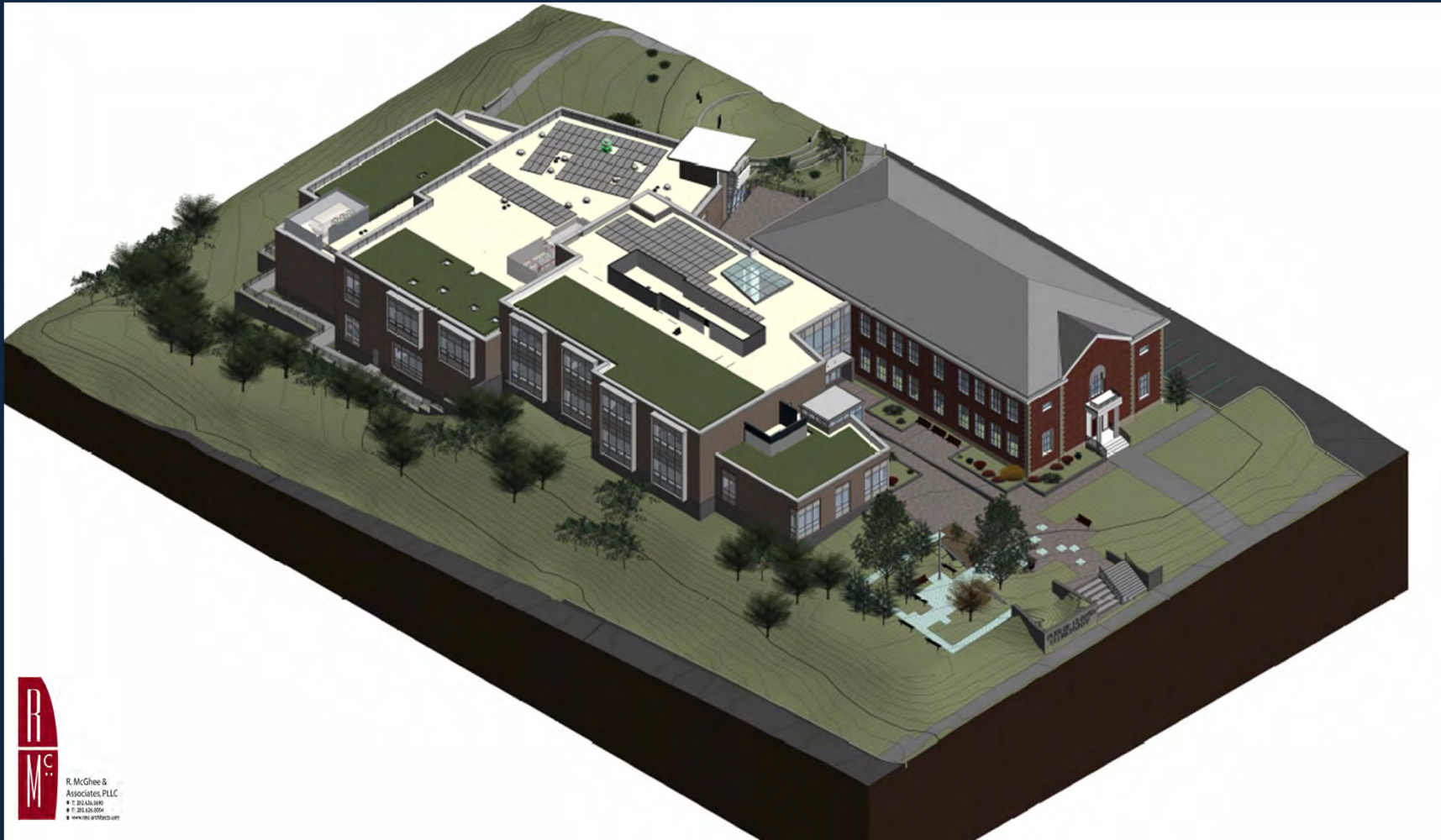
elev★te



Elevating the Quality of Life in the District



NORTH WEST AERIAL VIEW



R. McGhee &
Associates, PLLC
202.424.2000
703.224.0500
www.rmc-architects.com

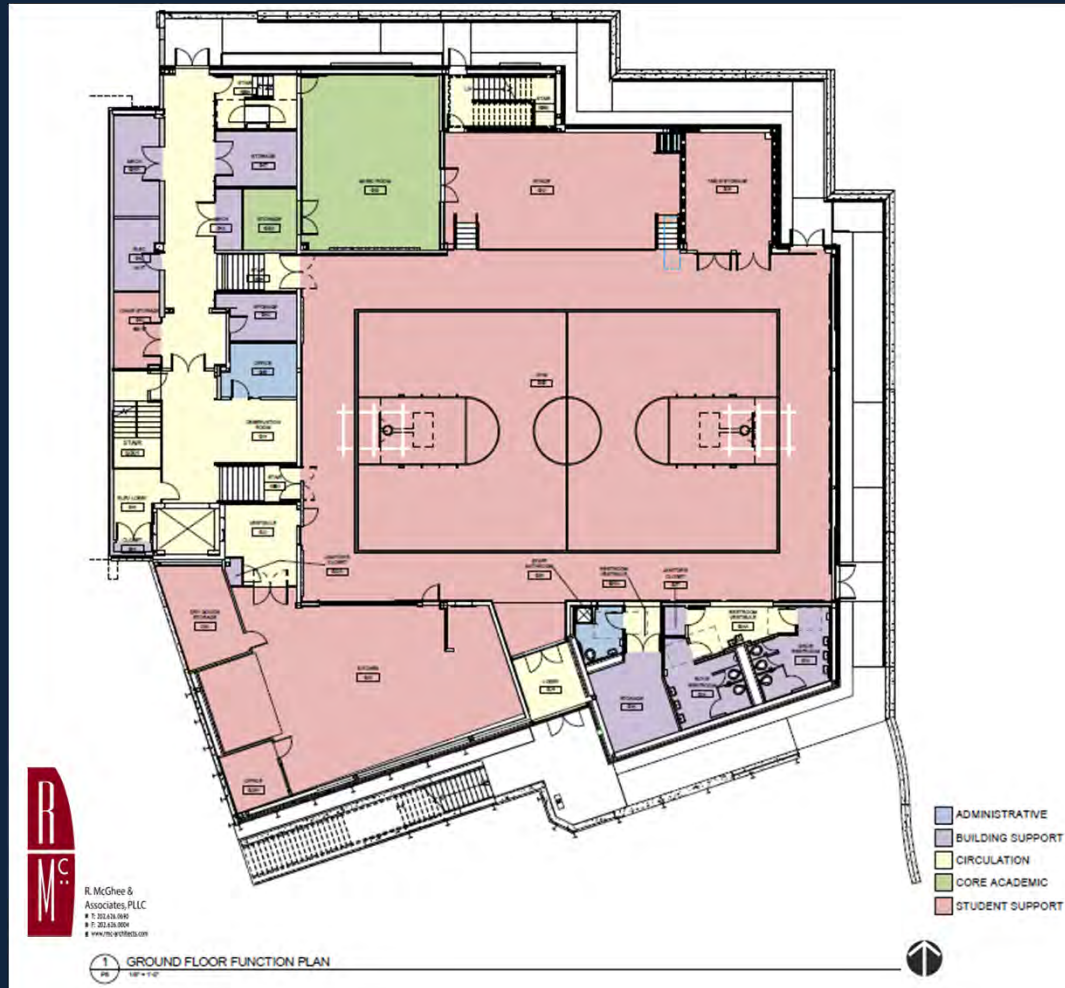
elev★te



Elevating the Quality of Life in the District



FLOOR PLAN BLDG CD: GROUND FLOOR



Elevating the Quality of Life in the District



FLOOR PLAN BLDGS A, B & CD: 1ST FLOOR



Elevating the Quality of Life in the District



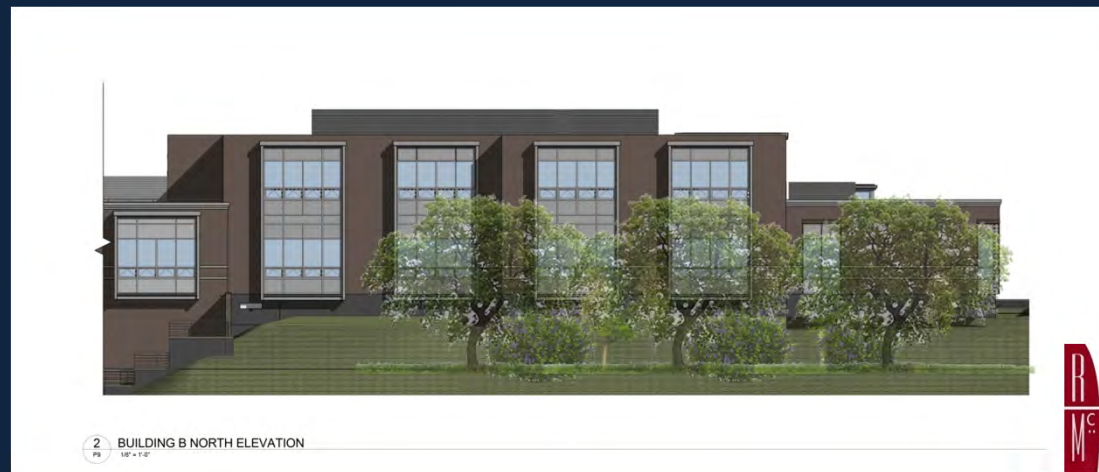
FLOOR PLAN BLDGS A & B: 2ND FLOOR



Elevating the Quality of Life in the District



VIEW OF BUILDING A, B, AND CD LOOKING NORTH



Elevating the Quality of Life in the District



SOUTH ELEVATION: BLDGS A,B,CD



1 BUILDING B-C-D SOUTH ELEVATION
PSD 1/8" = 1'-0"



4 BUILDING A-B SOUTH ELEVATION
PSD 1/8" = 1'-0"

Elevating the Quality of Life in the District



**NORTH,
SOUTH, WEST
ELEVATION:
BLDGS A,B,CD**





VIEW OF PUBLIC GYM ENTRANCE



R. McGhee &
Associates, PLLC
• 7 202.638.8800
• 7 202.638.0504
• www.rmcgheeamc.com



1 **SOUTHWEST ELEVATION.**
P11 1/8" = 1'-0"



2 **GYM ENTRY VIEW**
P11

Elevating the Quality of Life in the District



INTERIOR VIEW OF THE EXTENDED LEARNING CENTER



R
M
R. McGhee &
Associates, PLLC
202.242.2444
202.424.0244
www.rmcghee.com

elev★te

 DISTRICT OF COLUMBIA
PUBLIC SCHOOLS

 **DPR**
DC DEPARTMENT OF PARKS AND RECREATION

 **DGS**

Elevating the Quality of Life in the District



INTERIOR VIEW OF THE LOBBY LOOKING WEST



Elevating the Quality of Life in the District



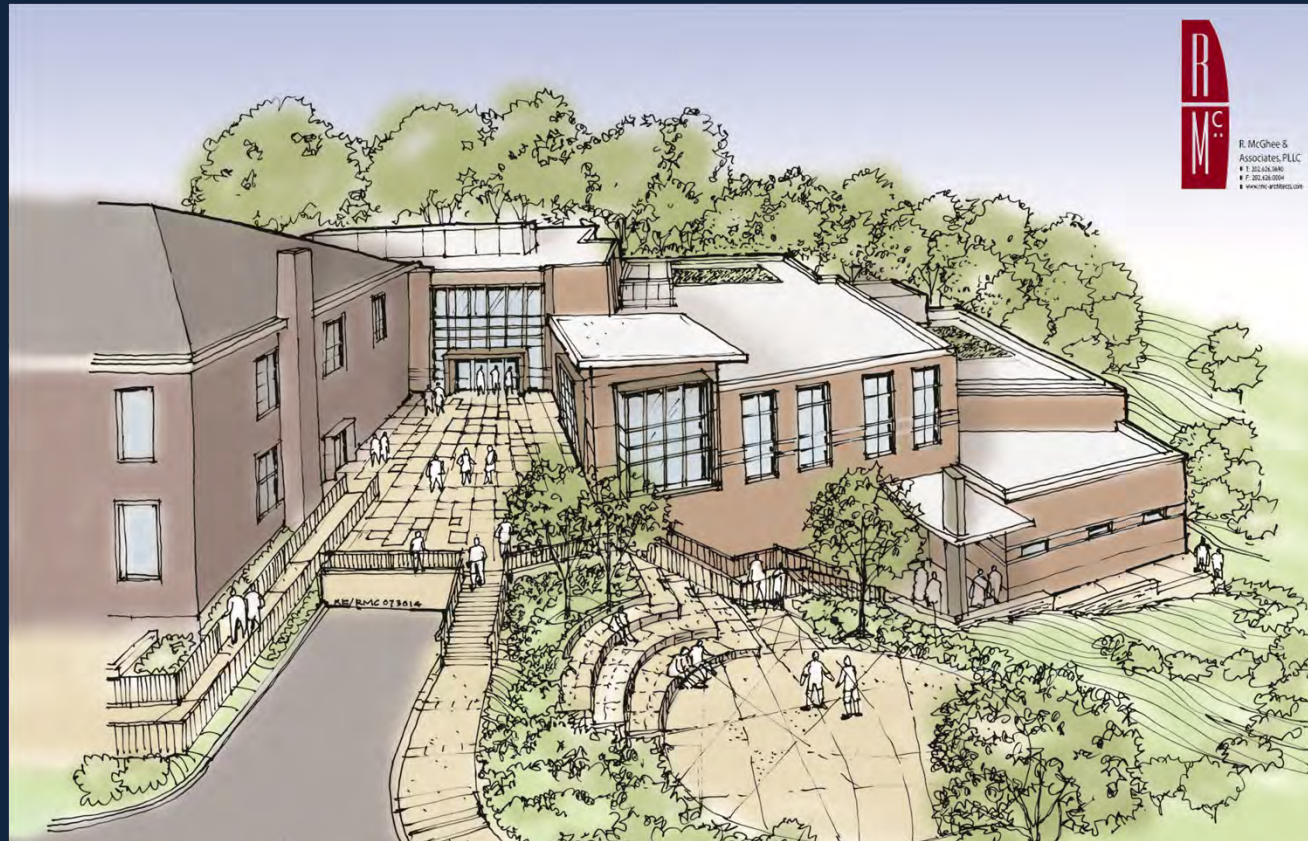
INTERIOR VIEW



Elevating the Quality of Life in the District



VIEW OF SOUTH ENTRANCE LOOKING NORTH



Elevating the Quality of Life in the District

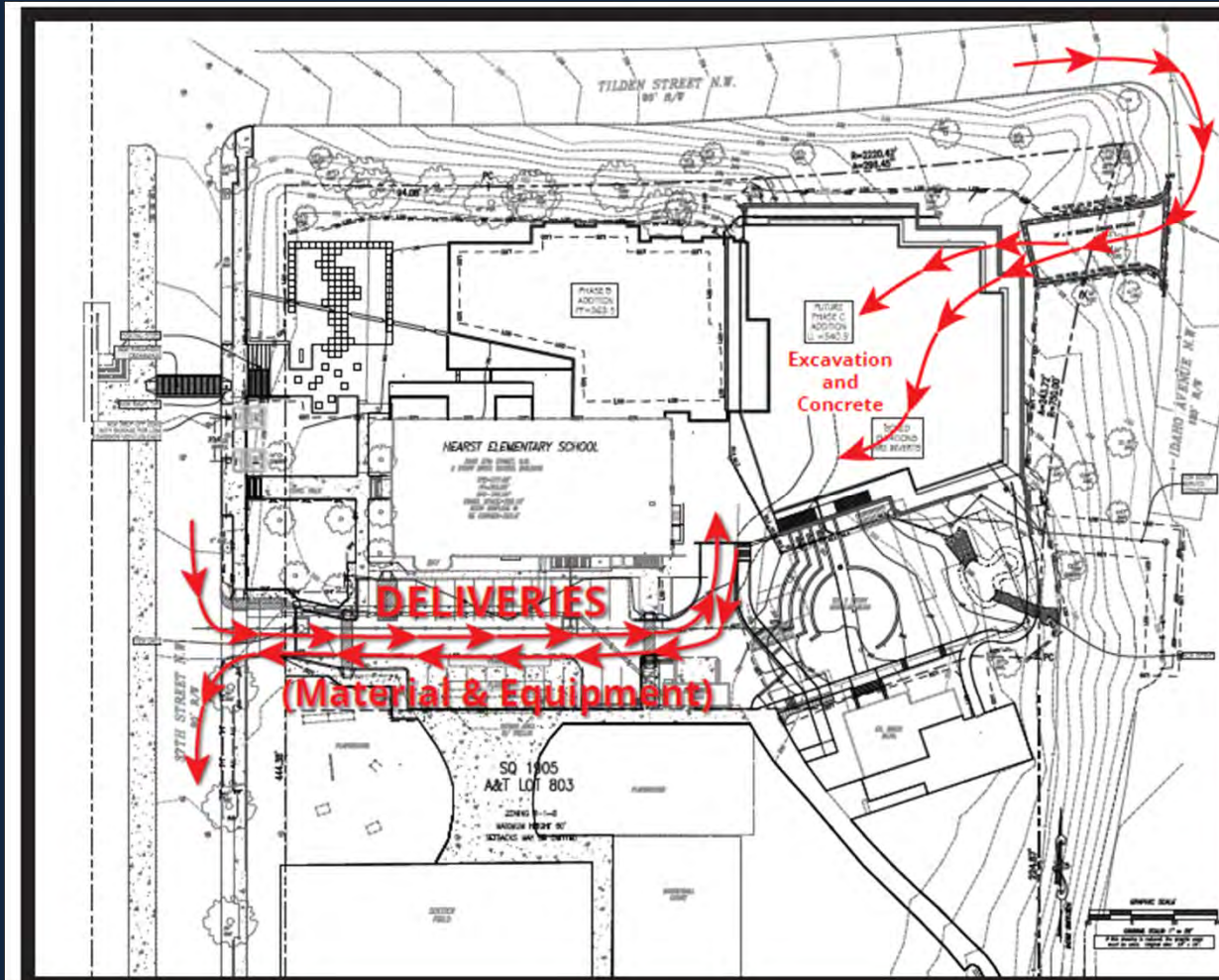


LANDSCAPE SITE PLAN





BUILDING CD: SITE LOGISTICS (JAN 2015)



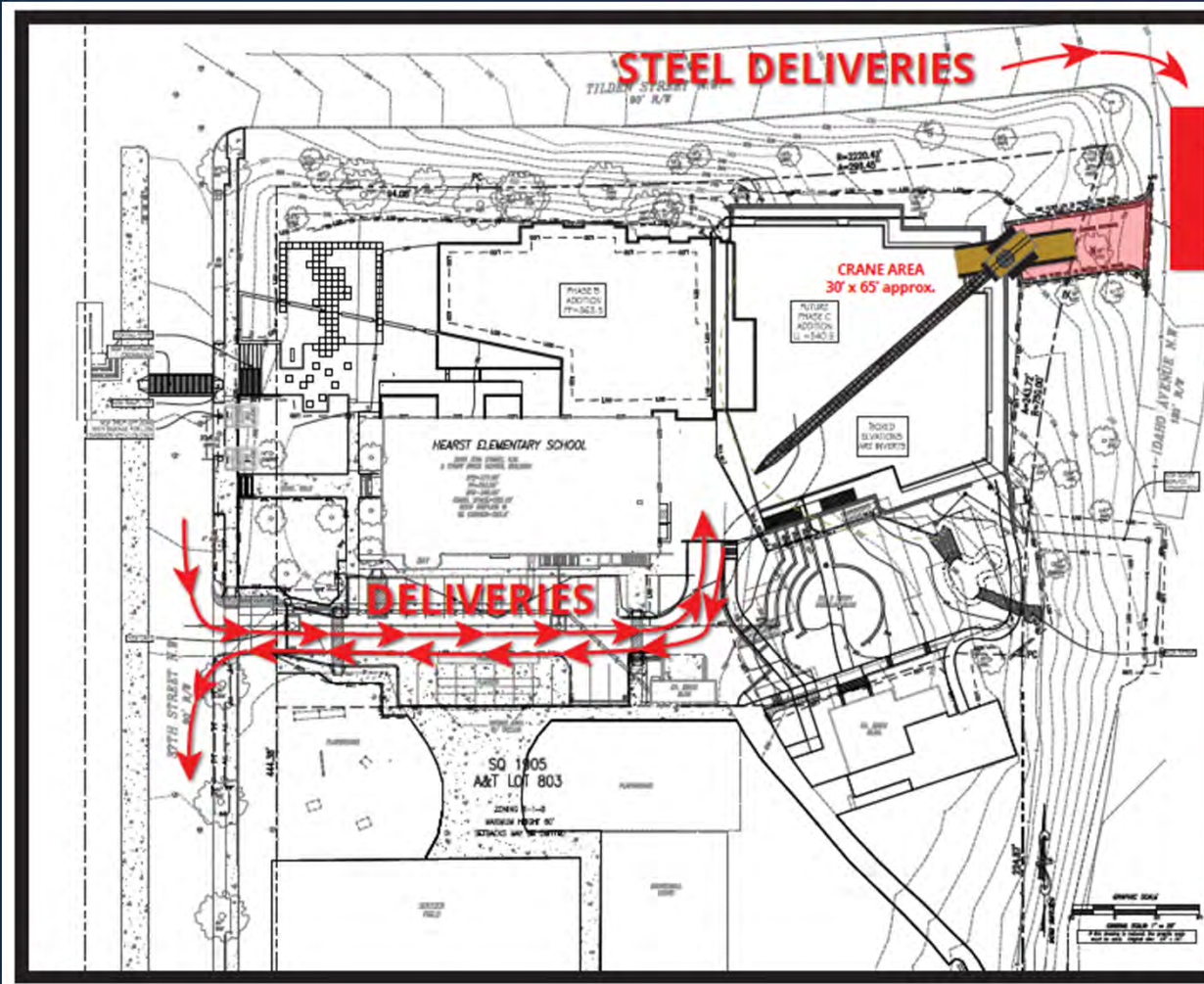
**PHEOBE HEARST
ELEMENTARY
SCHOOL**

BUILDING C-D

TIME-FRAME
January
2015



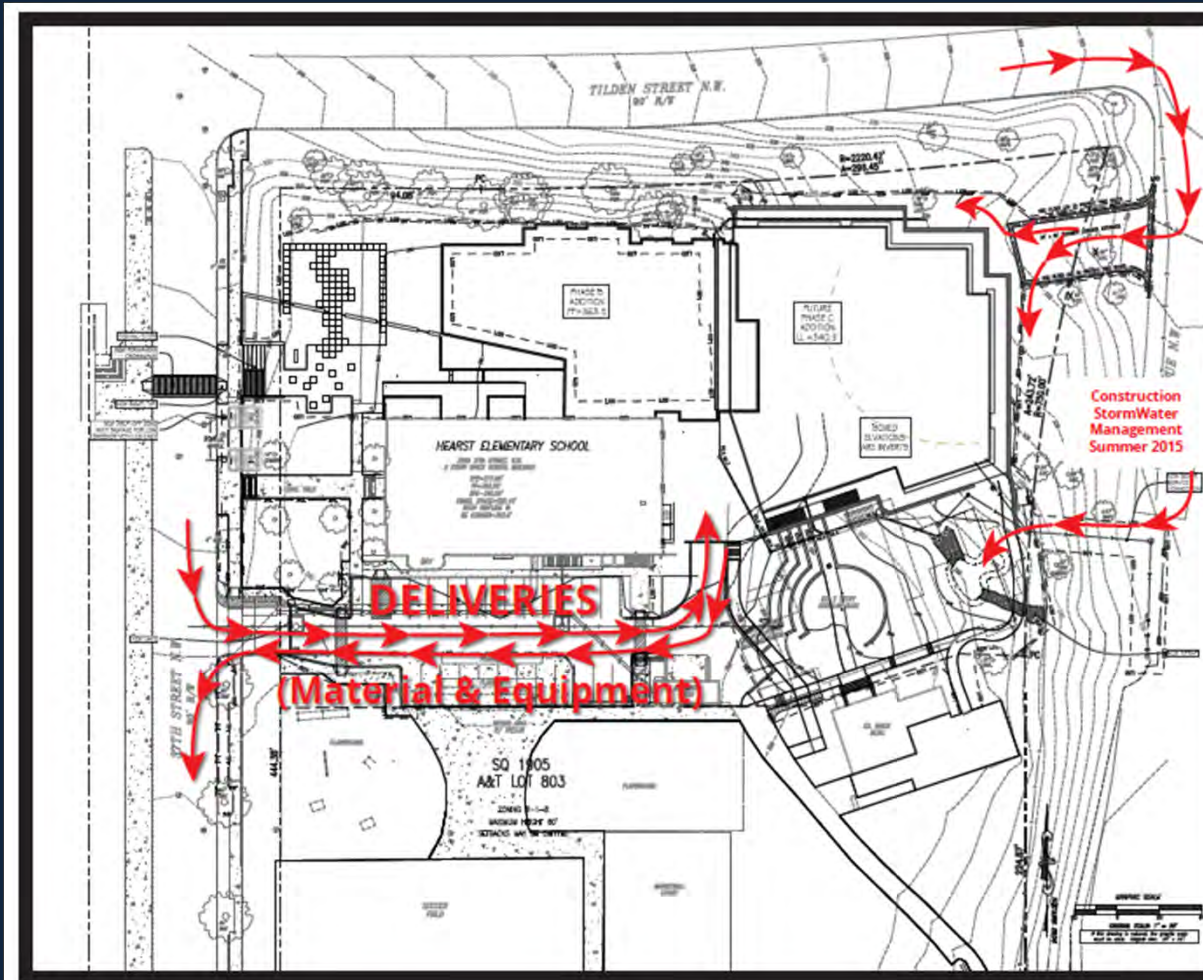
BUILDING CD: SITE LOGISTICS (FEB-MAR 2015)



Turner Building The Future
PHEOBE HEARST ELEMENTARY SCHOOL
BUILDING C-D
TIMEFRAME FEBRUARY - MARCH 2015



BUILDING CD: SITE LOGISTICS (APR-MAY 2015)



**PHOEBE HEARST
ELEMENTARY
SCHOOL**

BUILDING C-D

TIME-FRAME
April & May
2015



NEXT STEPS & PROJECT SCHEDULE

- December 2014: Building B Complete
- January 2015: Students Move Into Building B
- February 2015: Removal of 37th Street Classroom Trailers
- August 2015: Building CD Complete
- Hearst Park Improvements: Negotiations Underway
- Next SIT Meeting: December 1, 2014
- Next Neighbors Meeting: February 10, 2015
- Next Community Meeting: February 11, 2015

Elevating the Quality of Life in the District



QUESTIONS & ANSWERS



Like us!
@ Department of General Services (DGS)



Follow us!
@ DCDGS





DISTRICT OF COLUMBIA
PUBLIC SCHOOLS



Contact Information

Kenneth Diggs

DGS Director of Communications & Government Affairs

kenneth.diggs@dc.gov

Jackie Stanley

DGS Community Outreach Specialist

jackie.stanley@dc.gov

Website - dgs.dc.gov

Get ***Social*** with us on Facebook & Twitter Today!



Follow **@DCDGS**



Become a Fan **@DC Department of General Services**