

*Elevating the Quality of Life in the District*



# MANN ELEMENTARY SCHOOL MODERNIZATION PROJECT UPDATES

May 5, 2015



## MEETING AGENDA

- ☐ Rules of the Road
- ☐ Construction Update
- ☐ Public Art Commission
- ☐ Q&A
- ☐ Next Steps



## **RULES OF THE ROAD**

- ☐ **Respect Each Other**
- ☐ **Cellphones Off or on Vibrate**
- ☐ **Q&A Will Be Taken at the End of the Presentation**



## PROJECT SCHEDULE

- ❑ **December 2014: Complete Building B**
- ❑ **June 2015 – August 2015**
  - **Begin Exterior Site Improvements**
  - **Demolition of the Community Center**
  - **Complete Building C**
  - **Renovate Playground**
  - **Public Art Installation**
  - **Site Landscaping**

33





33





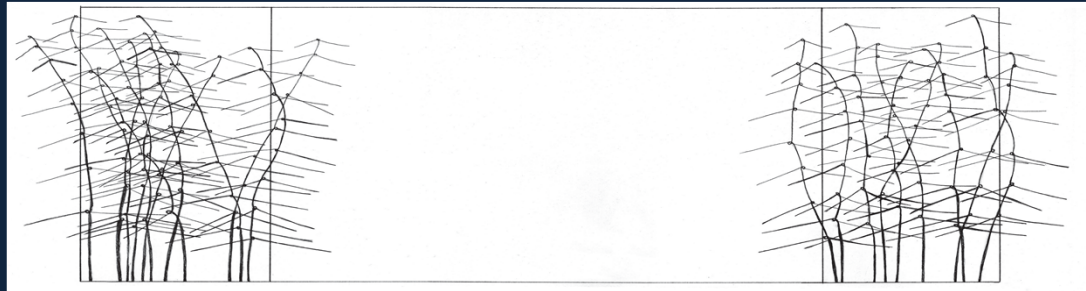
## **PUBLIC ART INITIATIVE**

- ☐ Open call to artists across the country to install art at selected locations throughout the school
- ☐ Mann ES is one of six schools that will participate in the public art work project
- ☐ Selected artists will work with the school staff and students to personalize the work
- ☐ Following slides are the selected pieces

# *Elevating the Quality of Life in the District*

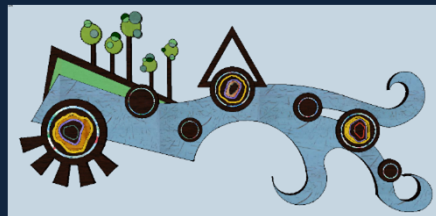


Elizabeth Billings + Andrea Wasserman

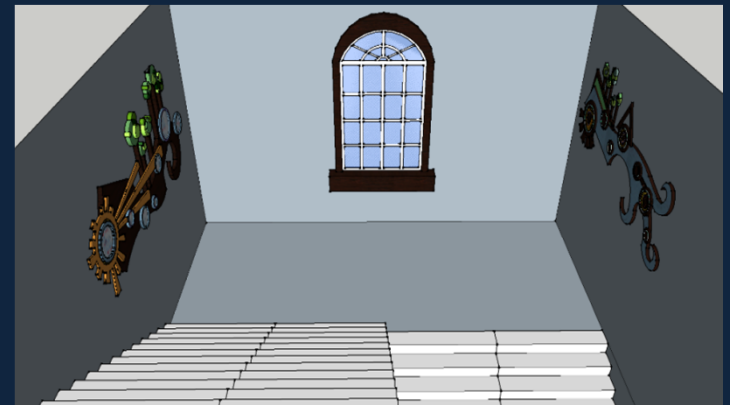


The strength of A Small Forest lies in the balance between the large, dynamic tree trunks and the intricate movement of the branches. There is a palpable relationship between growth in nature and the education of a child. It is the geometric progression of these natural and graphic elements that give the work its identity

Tendani Mpulubusi El

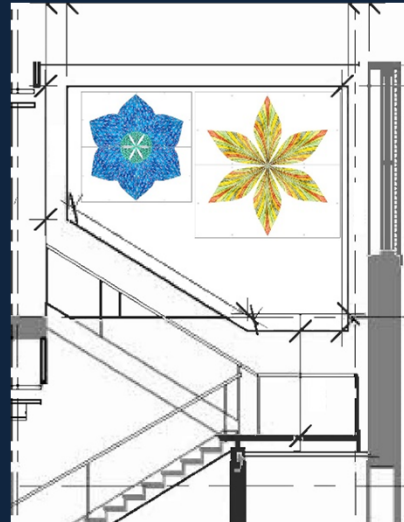
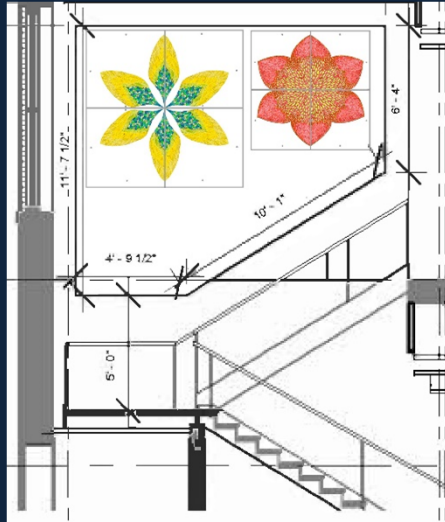


The general design is inspired by the local watershed and flowing winds.





## *Elevating the Quality of Life in the District*



Jill Parisi Studios

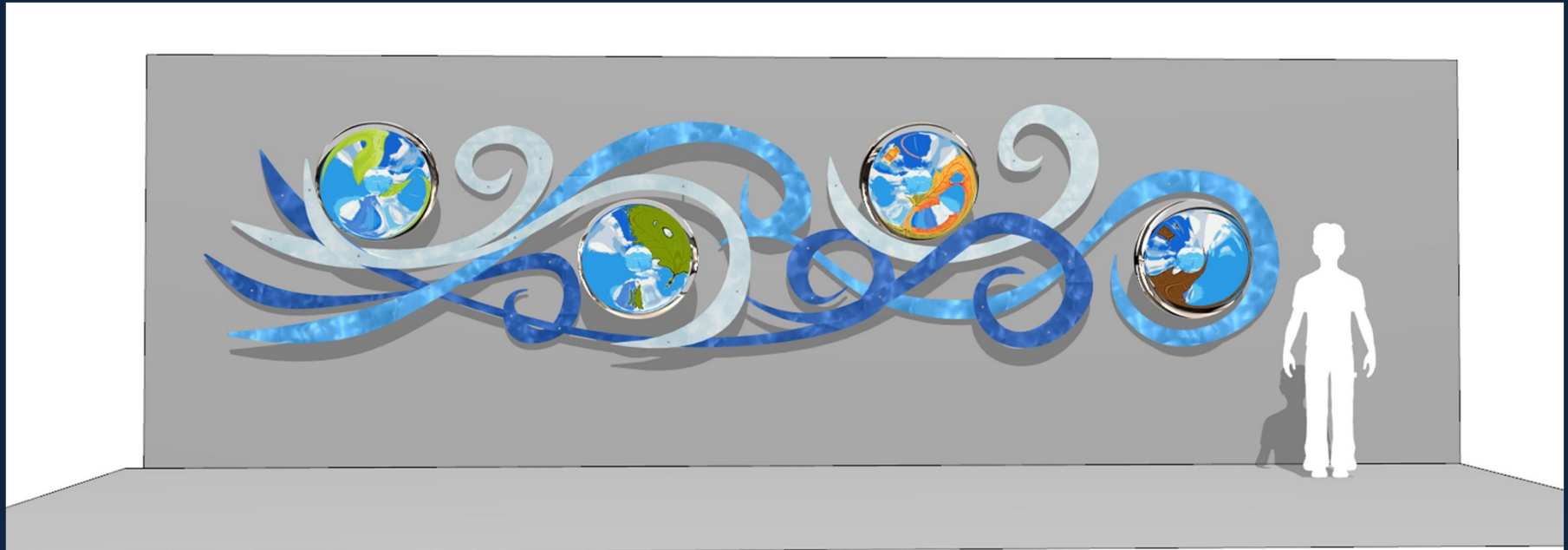
Hand Painted Glass panel

Christian Benefiel

3-D Wooden sculpture inspired by elements of wind and motion. Students will be able to participate by donating wooden sticks that will be incorporated into the art.



## *Elevating the Quality of Life in the District*



Horace Mann Elementary School, 3rd Floor Lobby- Wind Sculpture  
Sculpture with Child to scale  
Artist Zachary Oxman  
Presented: 03-17-15



Zenith Gallery est. 1978  
1429 Iris St., NW  
Washington DC 20012-1409

202-783-2963  
art@zenithgallery.com  
www.zenithgallery.com

# *Elevating the Quality of Life in the District*



Horace Mann ES

Washington, DC April 21, 2015 79068-1-5r



elev★te

 DISTRICT OF COLUMBIA  
PUBLIC SCHOOLS



*Elevating the Quality of Life in the District*



## QUESTIONS & ANSWERS



Like us!  
@ Department of General Services (DGS)



Follow us!  
@ DCDGS





DISTRICT OF COLUMBIA  
PUBLIC SCHOOLS



## Contact Information

**Jackie Stanley**

DGS Community Outreach Coordinator

**[Jackie.Stanley@dc.gov](mailto:Jackie.Stanley@dc.gov)**

Or

**Jennifer Battle**

DGS Project Manager

**[Jennifer.Battle@mckissackdc.com](mailto:Jennifer.Battle@mckissackdc.com)**

**Website - [dgs.dc.gov](http://dgs.dc.gov)**

Get ***Social*** with us on Facebook & Twitter Today!



**Follow @DCDGS**



**Become a Fan @DC Department of General Services**