

Concept Design for  
**Duke Ellington Field**  
1700 38th St. NW, Washington, DC 20007

Community Presentation  
July 21, 2021



Presented by:

**studio**laan  
architecture | design | sustainability

Studio Laan  
715 G St. SE, 3rd Floor  
Washington, DC 20003



---

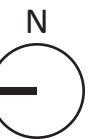
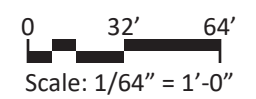
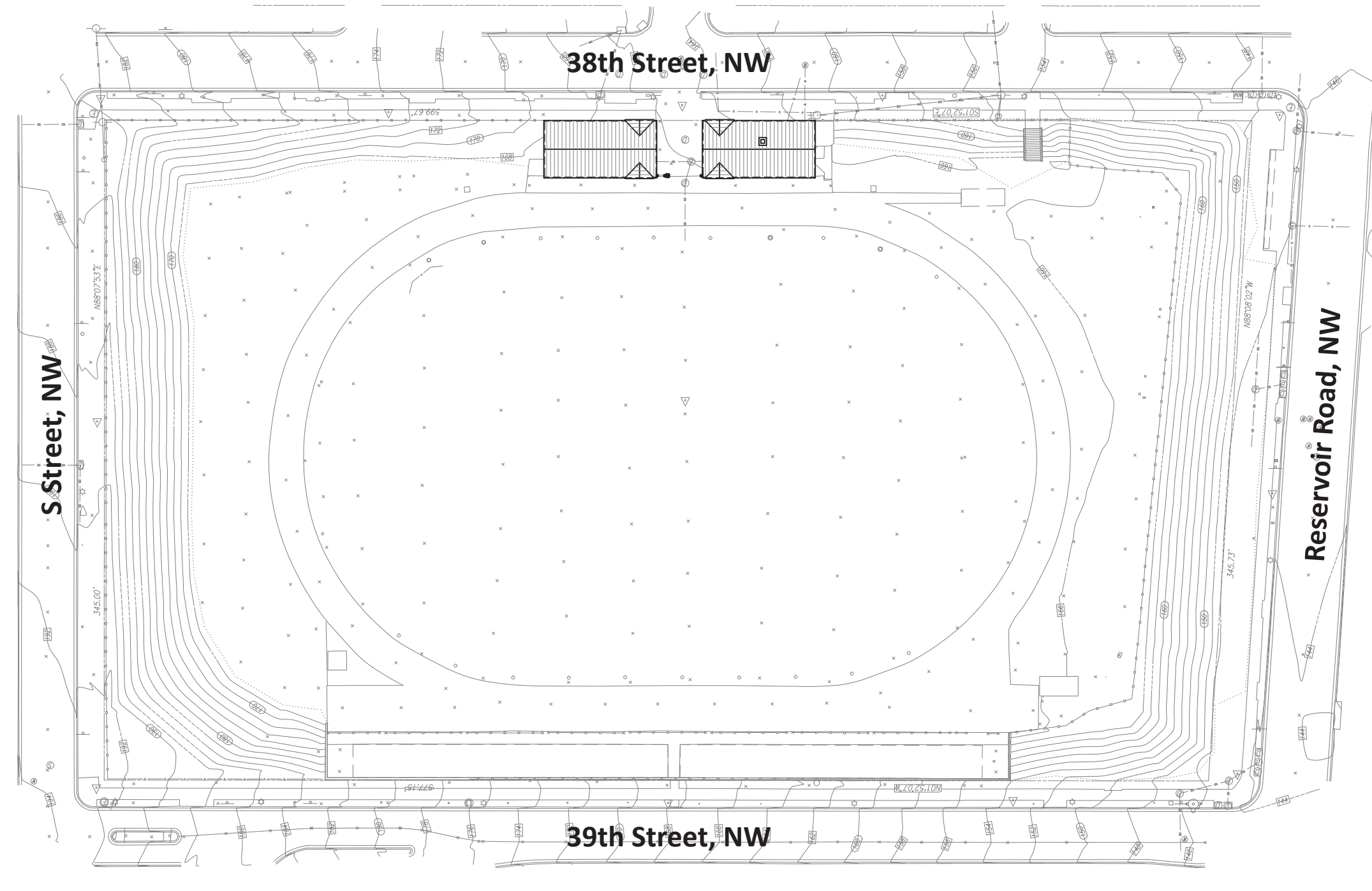
### Project Description

Upgrades to track, field and field houses.

---

### Presentation Index

1. Cover Page
2. Existing Conditions Survey
3. Existing Conditions Photos
4. Minimum and Maximum Soccer Field Comparisons
5. Layout Option 1 Existing 320m Track with Minimum Soccer Field
6. Layout Option 2 350m Track with Maximum Soccer Field Achievable
7. Historic Field House Elevations
8. Historic Field House Plans
9. South Field House Demolition Plan
10. South Field House Proposed Plan
11. North Field House Demolition Plan
12. North Field House Proposed Plan
13. Lighting Technology
14. Lighting Field
15. Lighting Track
16. Lighting Edge of Property







North Slope



South Field House, Field-Side Facade



Main Entrance from 38th Street



North Field House Street-Side Facade

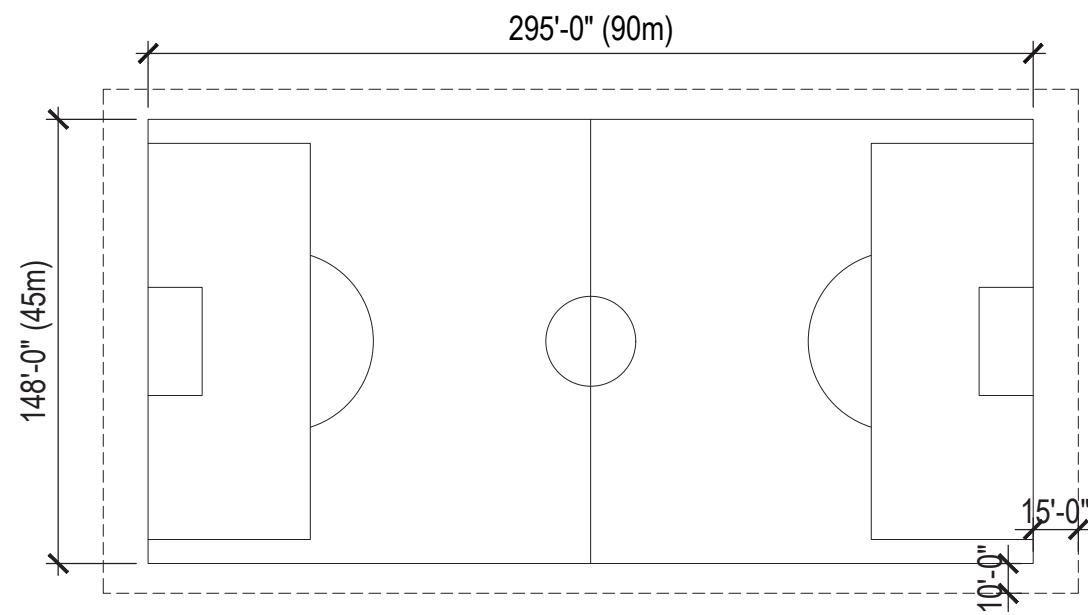


Secondary Entrance (Proposed Ramp)

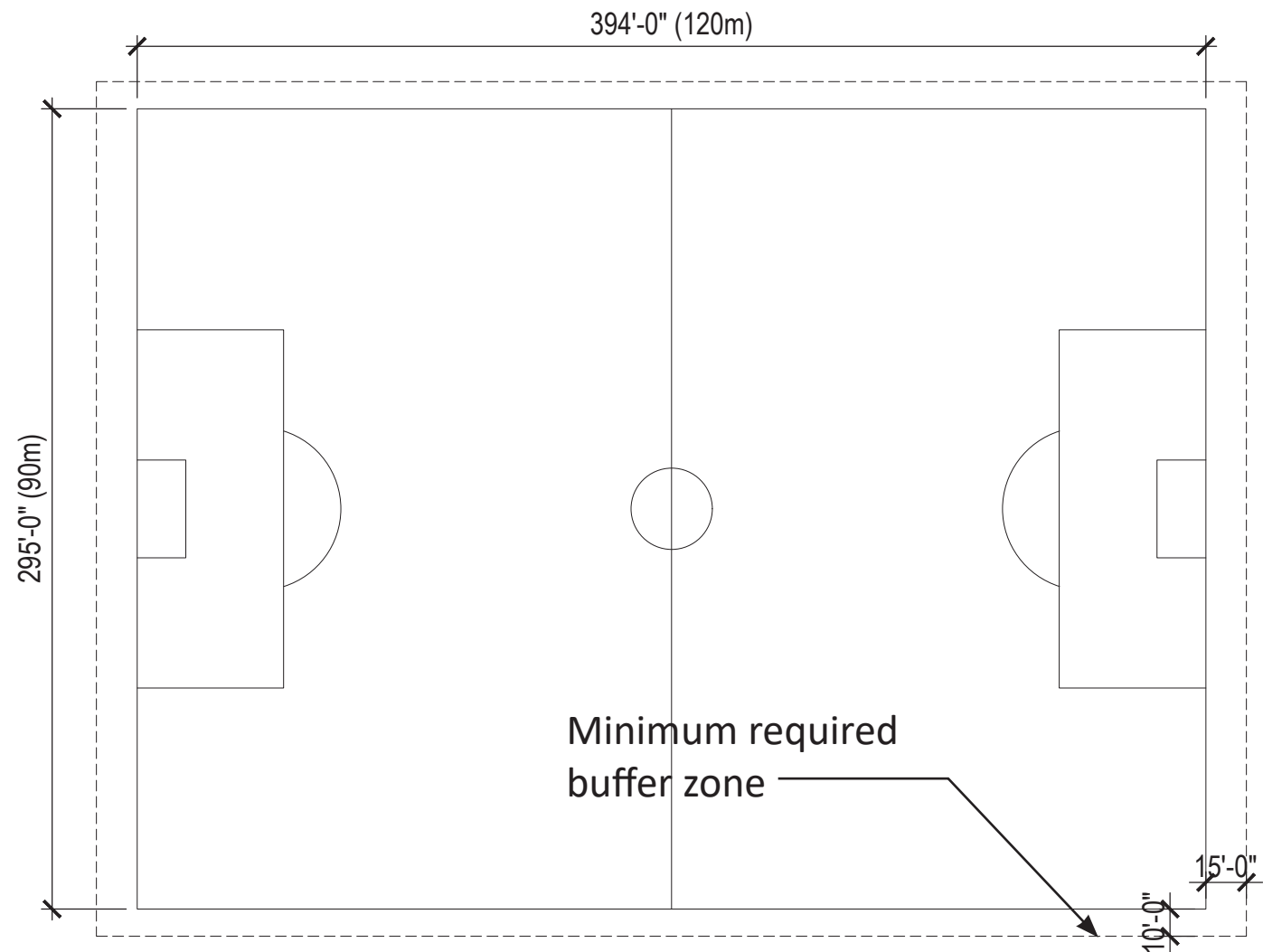


Existing Bleachers

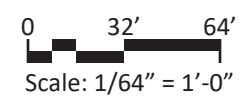


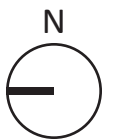
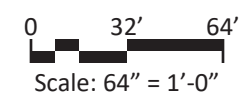
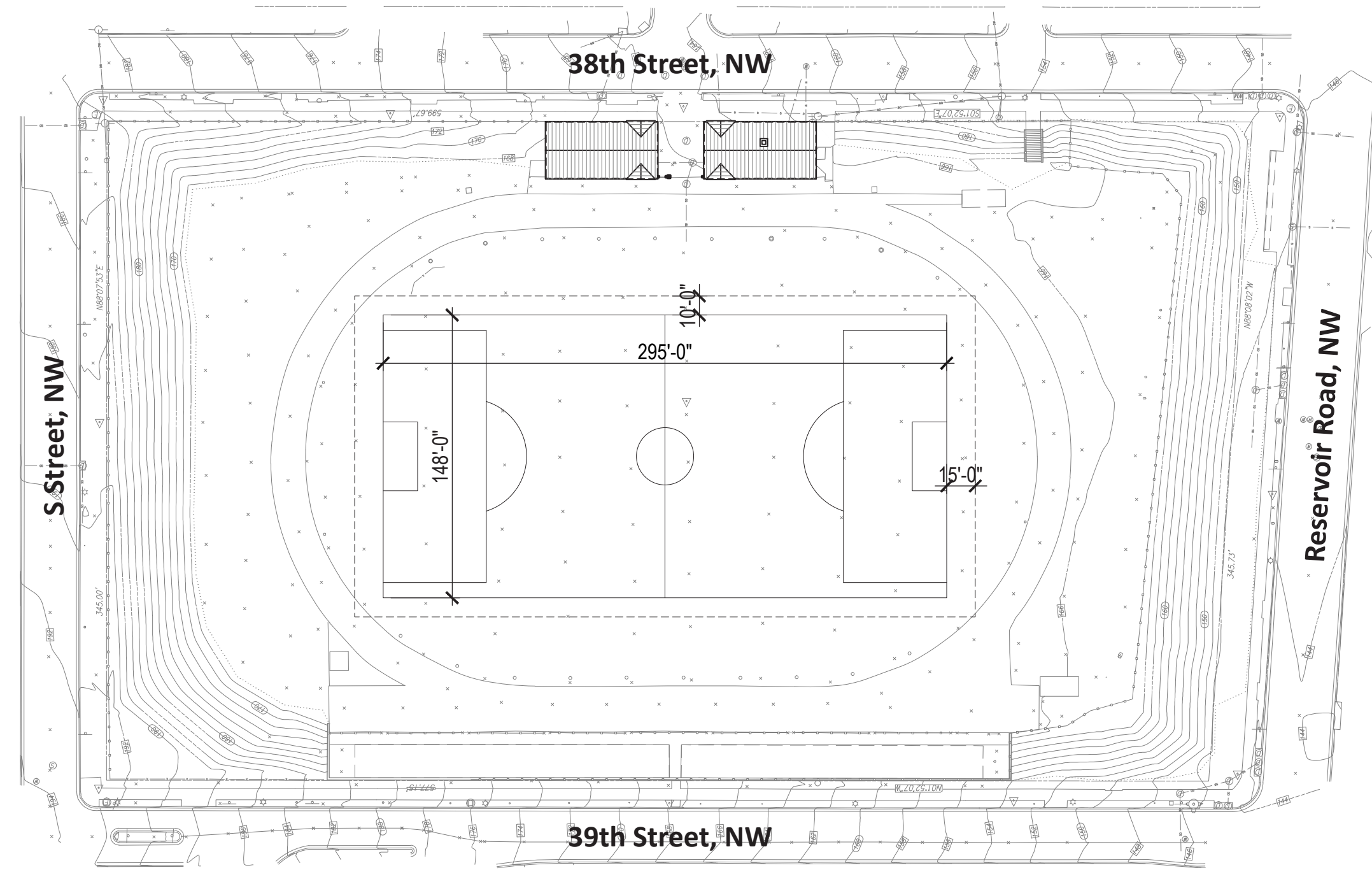


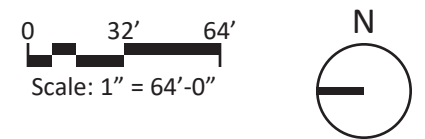
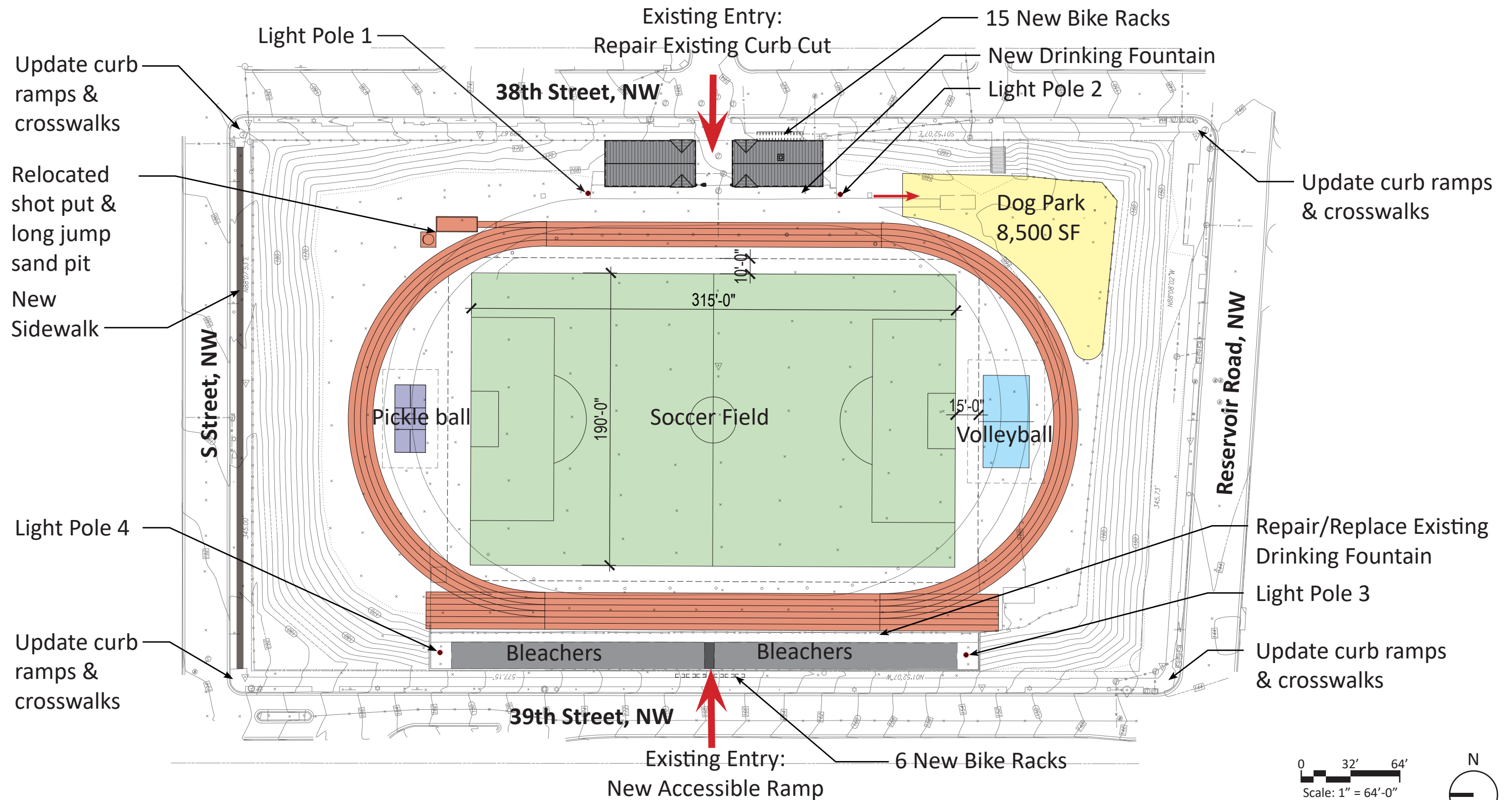
Minimum FIFA Regulation Soccer Field



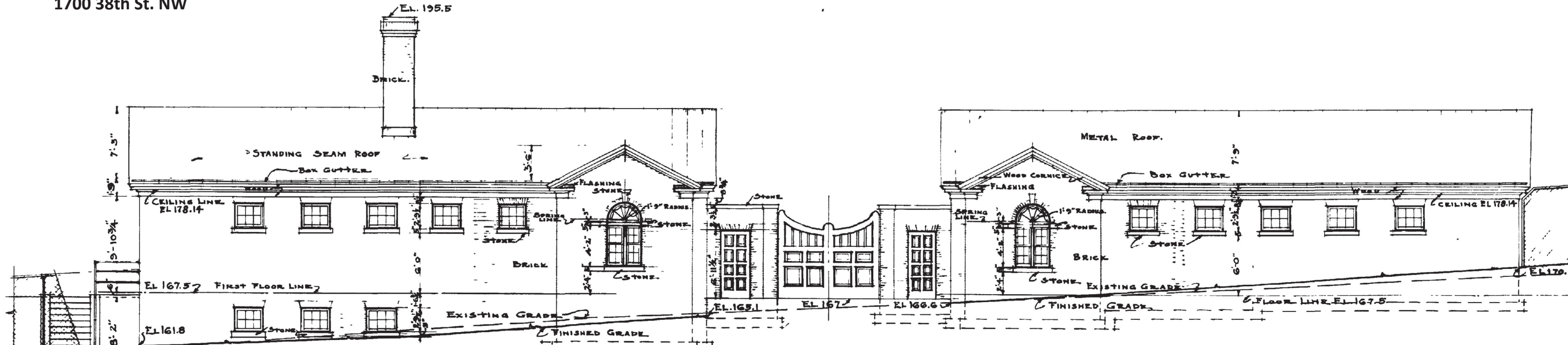
Maximum FIFA Regulation Soccer Field







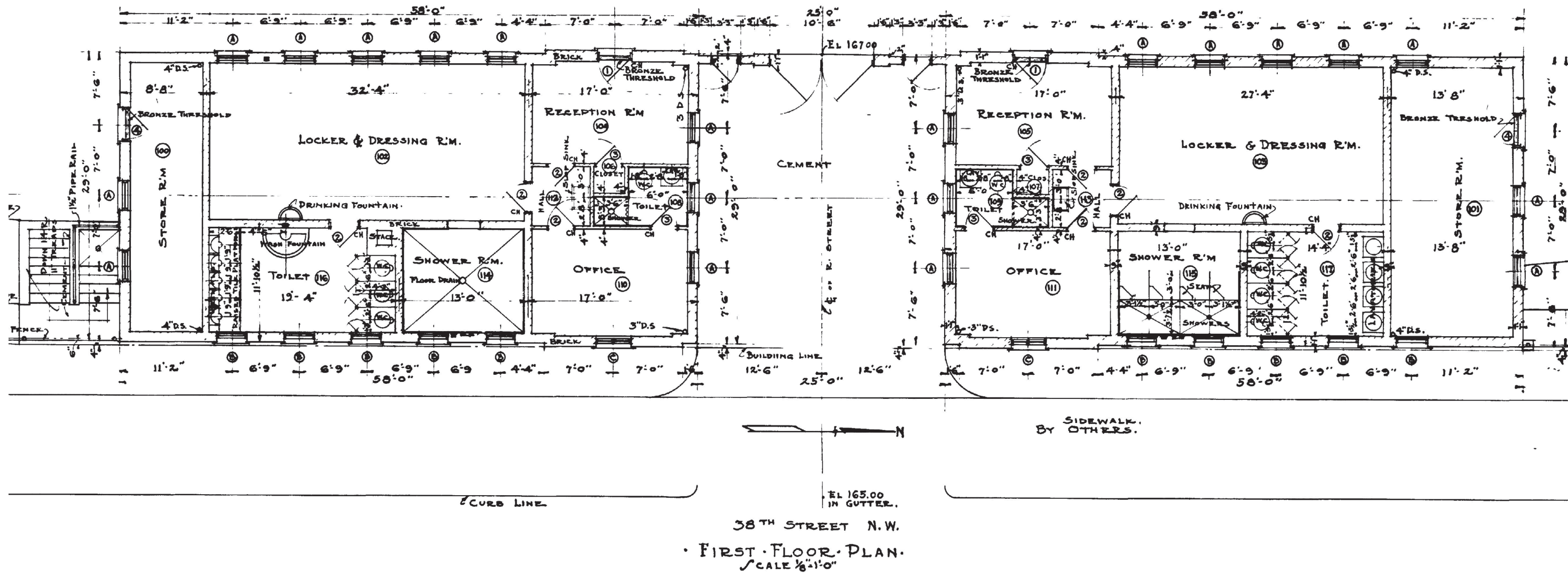




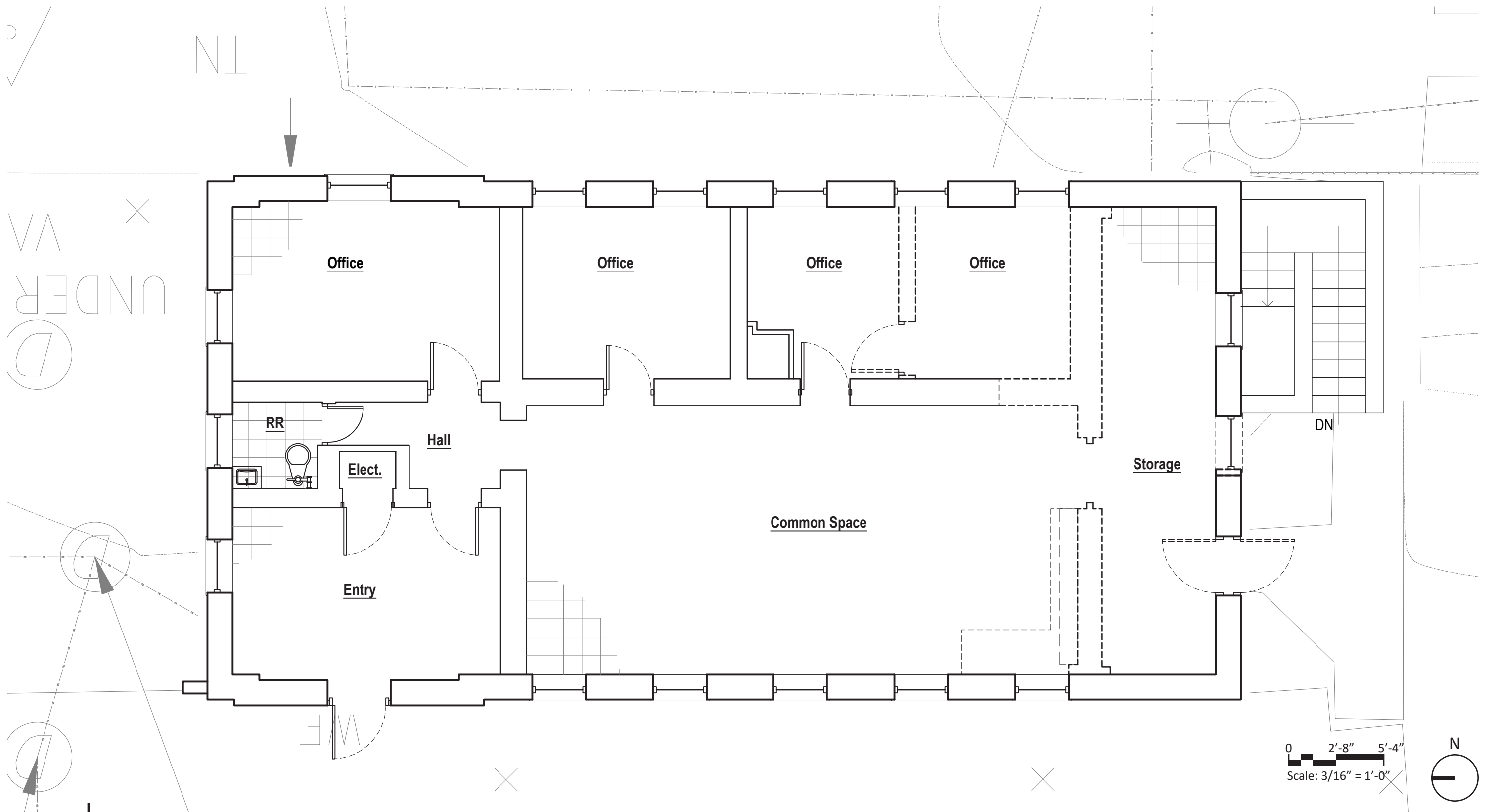
EAST ELEVATION.  
SCALE 1/8"=1'-0"



WEST ELEVATION.  
SCALE 1/8"=1'-0"



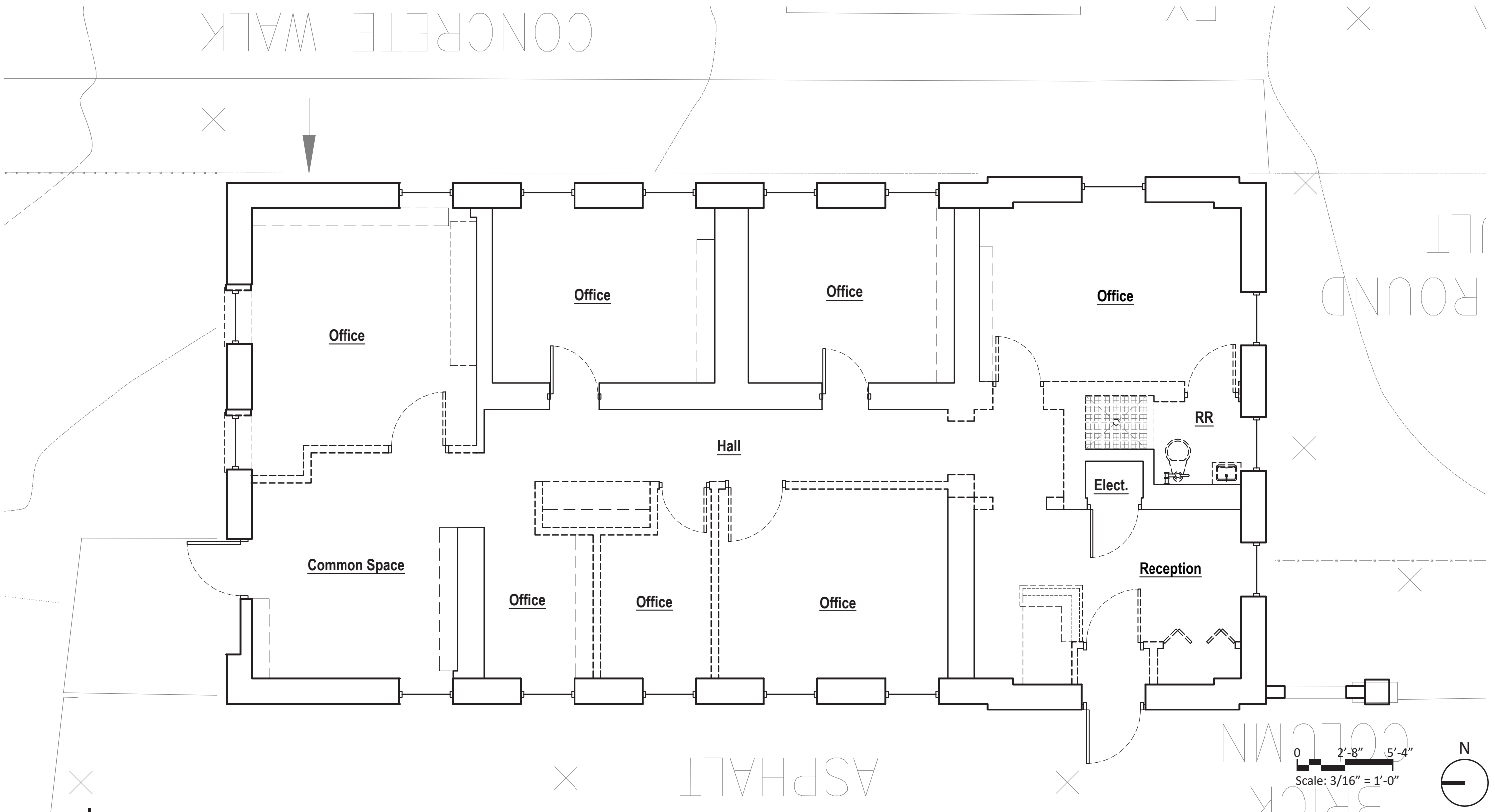




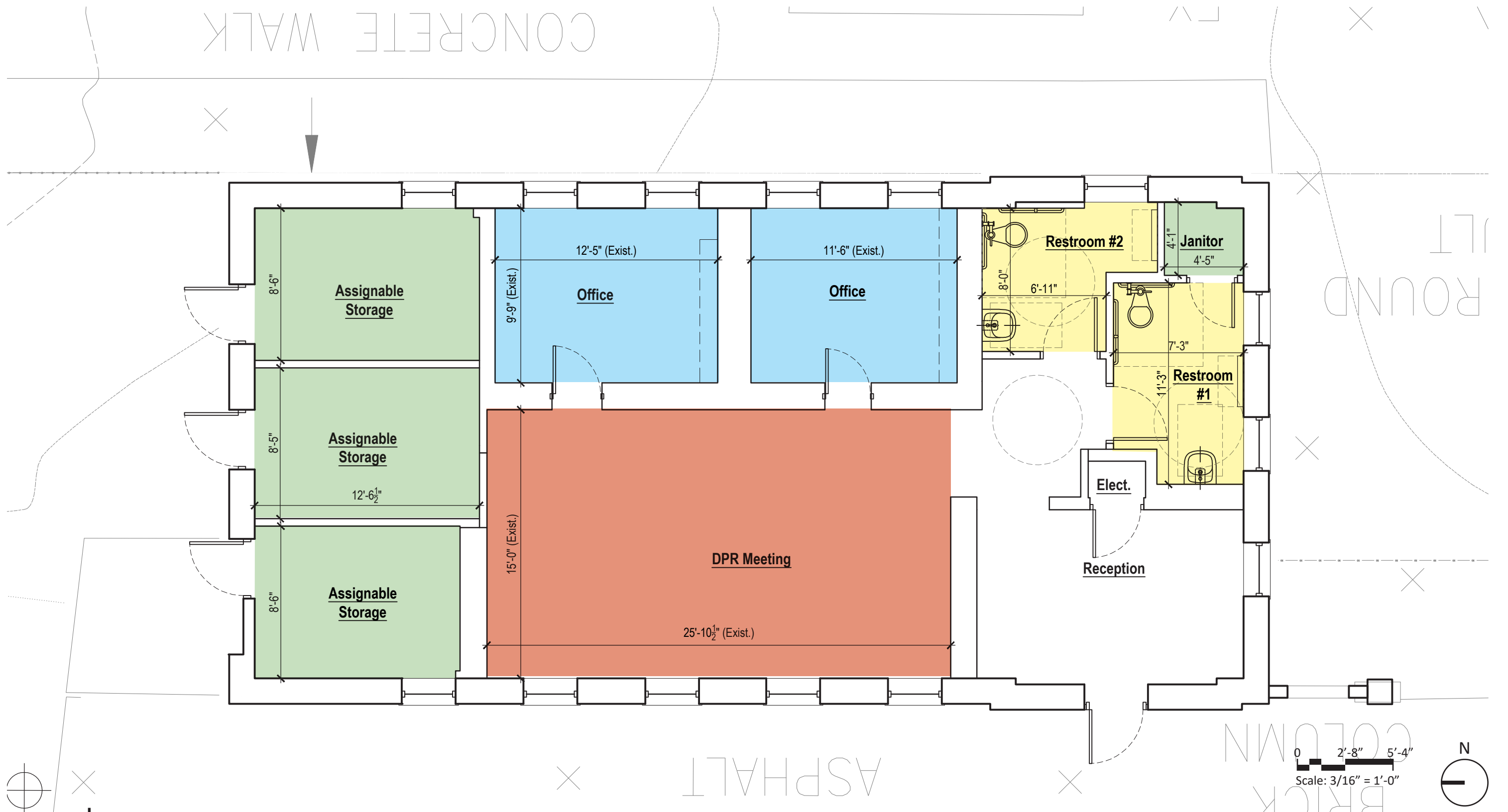












**TLC for LED<sup>®</sup>**  
Total Light Control<sup>™</sup>

Other Light Source Option  
**Green Generation<sup>®</sup> Lighting**  
Metal Halide  
10 year warranty

*"LEDs must be carefully integrated into lighting fixtures. The efficiency of a poorly designed fixture that uses even the best LEDs will be only a fraction of what it would be if the fixture were well-designed, and the design can also affect lumen maintenance."*

— U.S. Department of Energy  
[www.energy.gov/eere/ssl/led-basics](http://www.energy.gov/eere/ssl/led-basics)



increasing efficiency and decreasing environmental impact. →

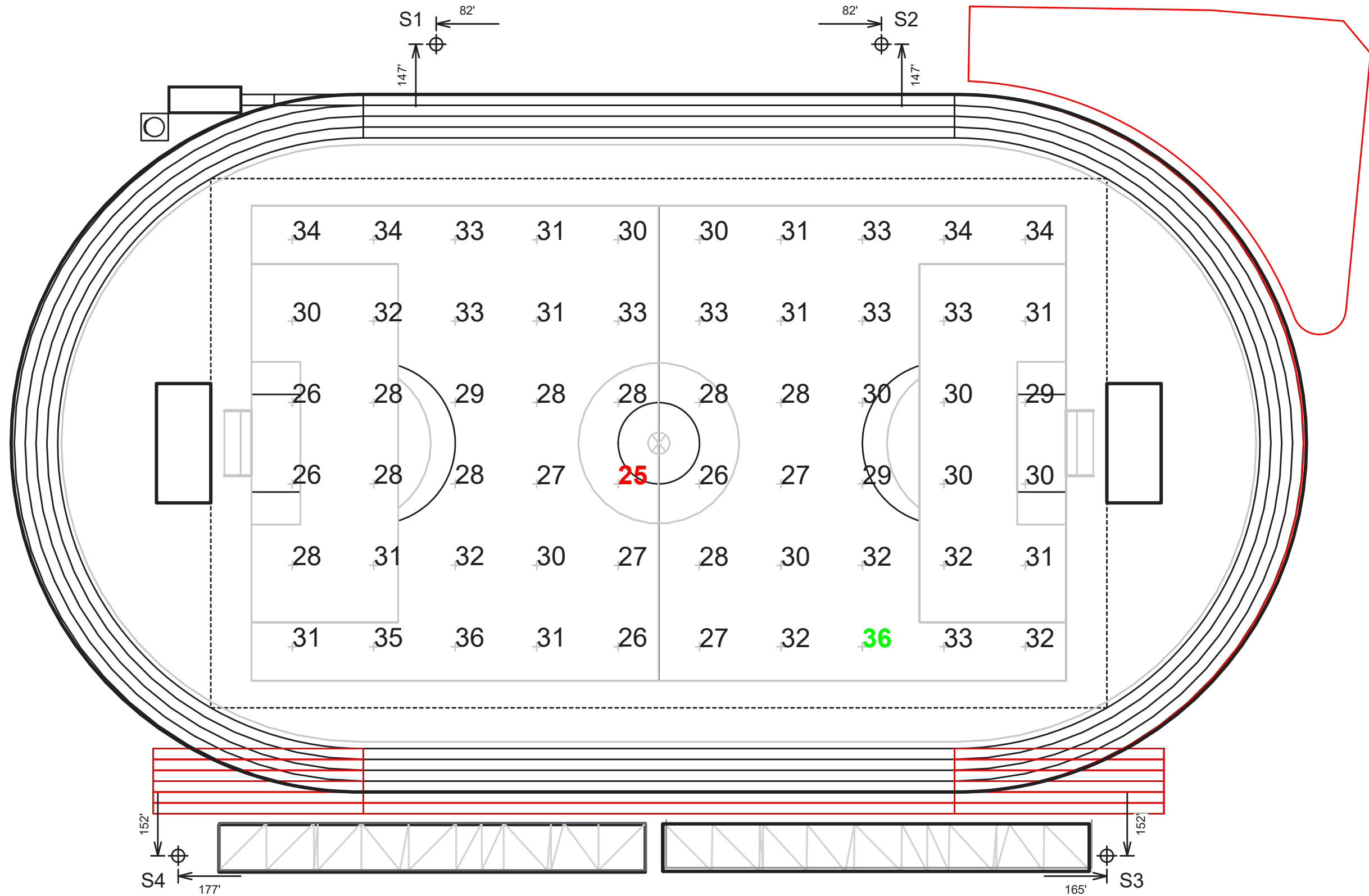
Today	Today
Musco LED System	Other Luminaire Manufacturer LED

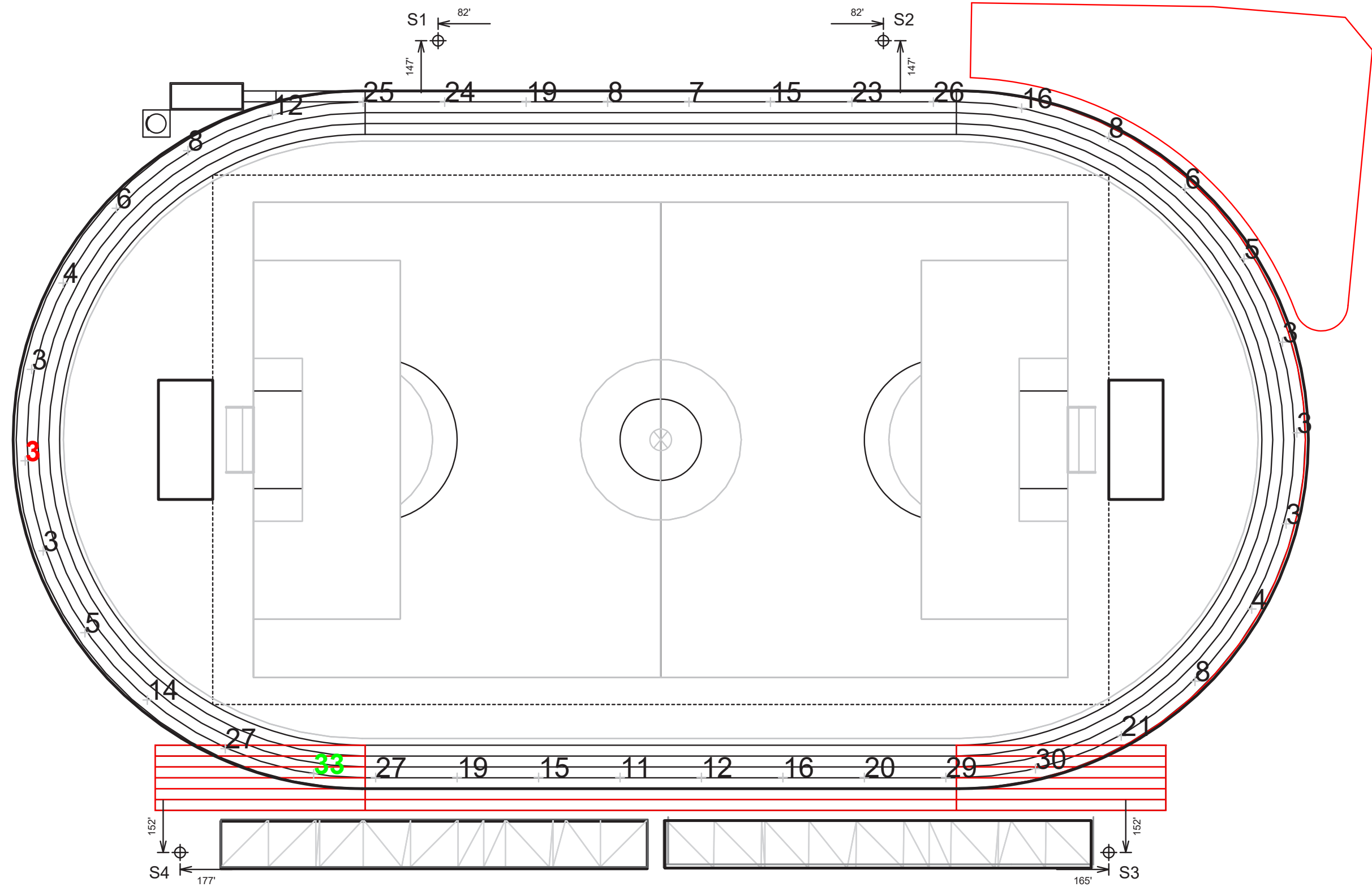
Light Energy: Use, Lose, Abuse

What often is: Other LED Manufacturer

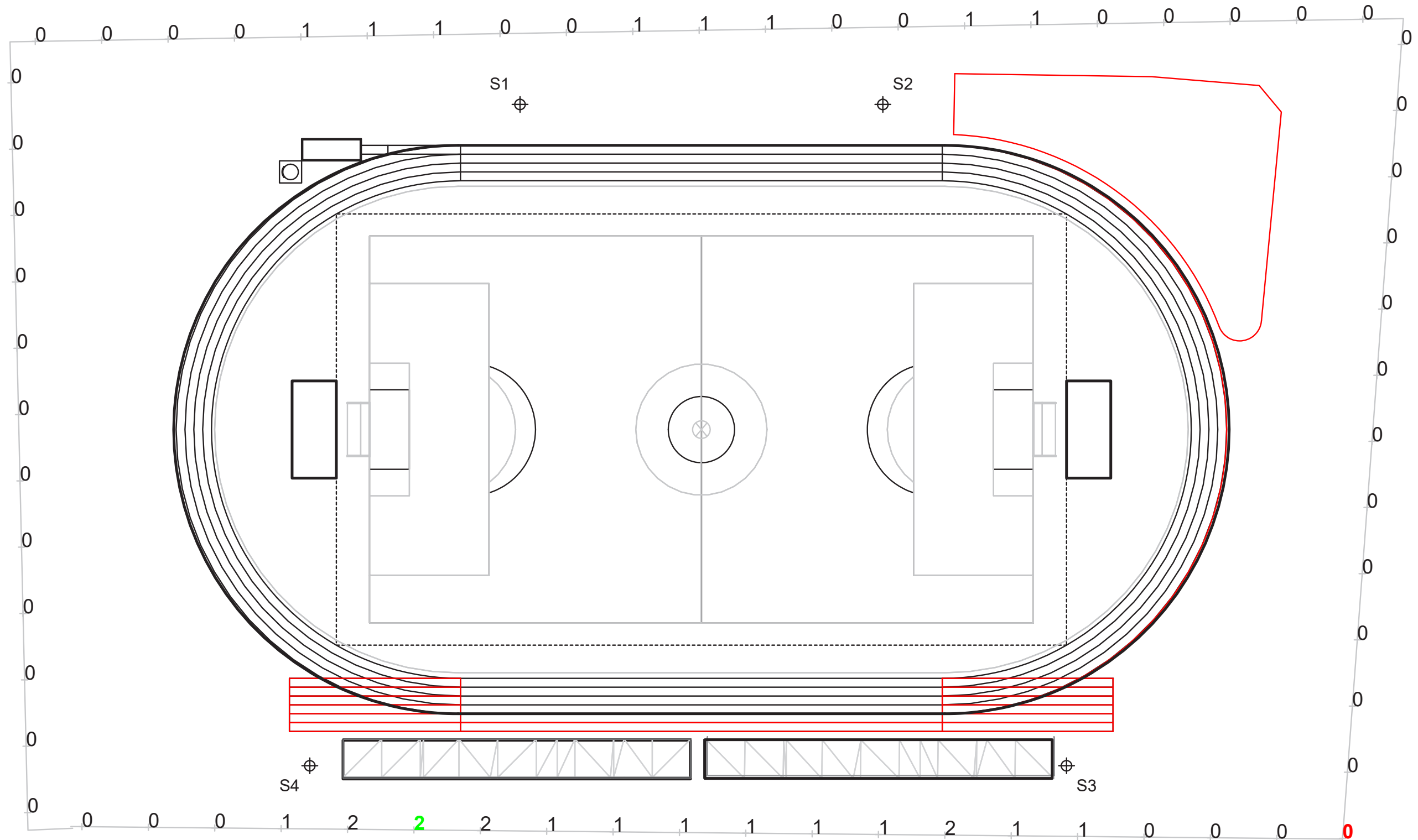
What can be: Musco TLC for LED<sup>®</sup>











## Next Steps:

- Complete consultant studies
  - Traffic study
  - Archaeological investigation
- Revise plans based on community feedback
- Meet again in September to review the revised plans.

## Contacts:

Peter Nohrden [peter.nohrden@dc.gov](mailto:peter.nohrden@dc.gov)

Wayne Gore [wayne.gore@dc.gov](mailto:wayne.gore@dc.gov)