

Concept Design for
Duke Ellington Field
1700 38th St. NW, Washington, DC 20007

September 29, 2021



Presented by:

studiolaan
architecture | design | sustainability

Studio Laan
715 G St. SE, 3rd Floor
Washington, DC 20003



Project Description

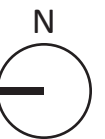
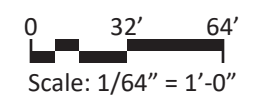
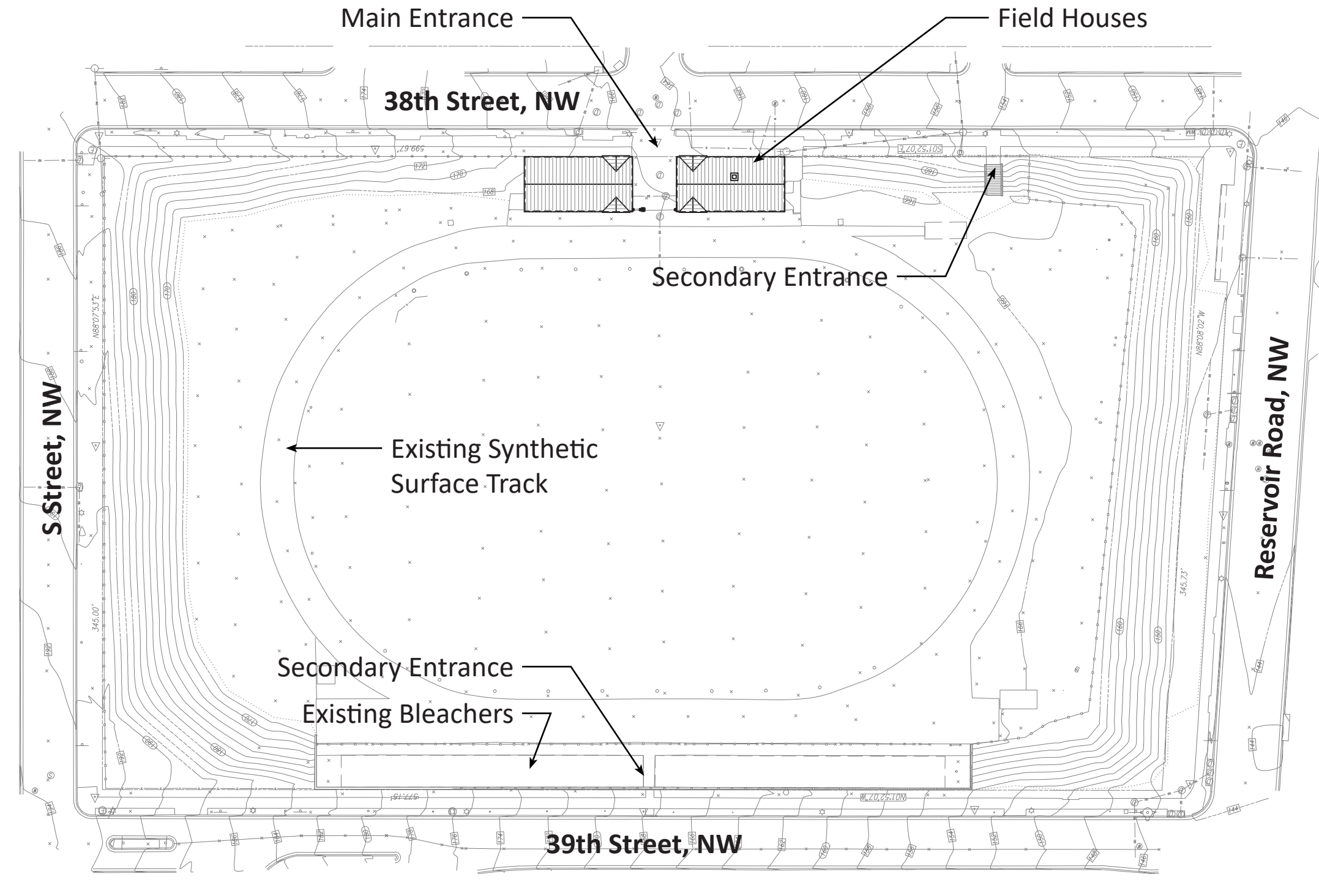
Upgrades to track, field, and field houses.

Presentation Index

1. Existing Conditions Survey
2. Existing Conditions Photos
3. Minimum and Maximum Soccer Field Comparisons
4. Layout Option 1 Existing 320m Track with Minimum Soccer Field
5. Layout Option 2 350m Track with Maximum Soccer Field Achievable
6. Historic Field House Elevations
7. Historic Field House Plans
8. South Field House Demolition Plan
9. South Field House Proposed Plan
10. South Field House Elevations
11. North Field House Demolition Plan
12. North Field House Proposed Plan
13. North Field House Elevations
14. Lighting Technology
15. Lighting Field
16. Lighting Track
17. Lighting Edge of Property
18. Transportation Plan

Rules of the Road

- Please keep your microphone on mute during the presentation and your video off.
- Please use the chat feature to ask questions or provide comments which will be addressed after the prepared slides.
- The chat function is located at the bottom of your screen and looks like a “thought” cloud symbol. Please be sure to submit your question / comment to “Everyone” for documentation purposes.
- We’ll do the best we can to answer all questions / comments, but if your question is not answered, DPR is tracking all questions and will create a Q/A document that will be shared after the meeting.





North Slope



South Field House, Field-Side Facade



Main Entrance from 38th Street



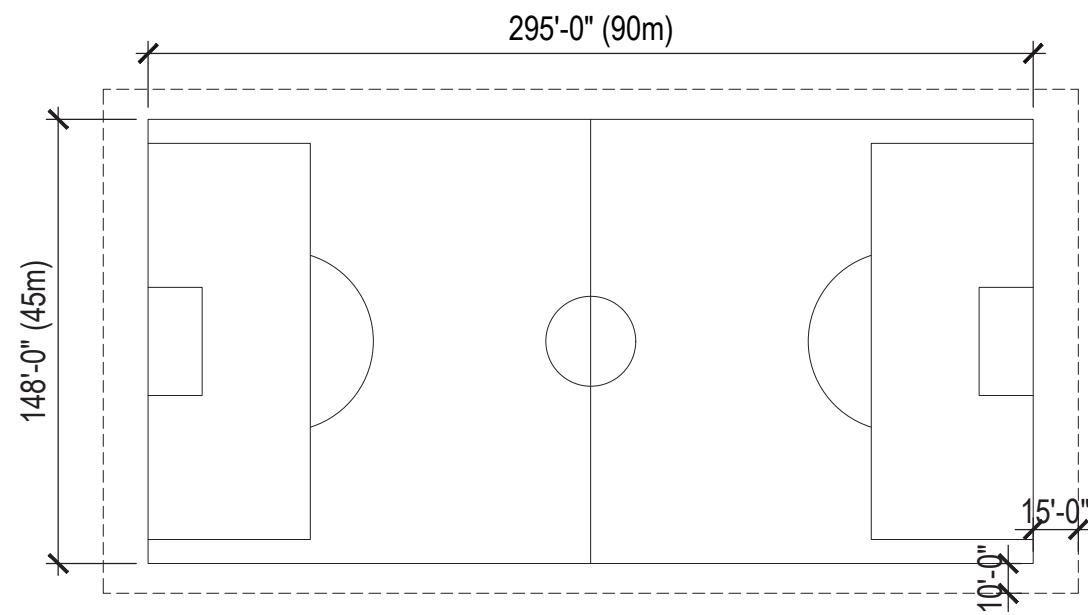
North Field House Street-Side Facade



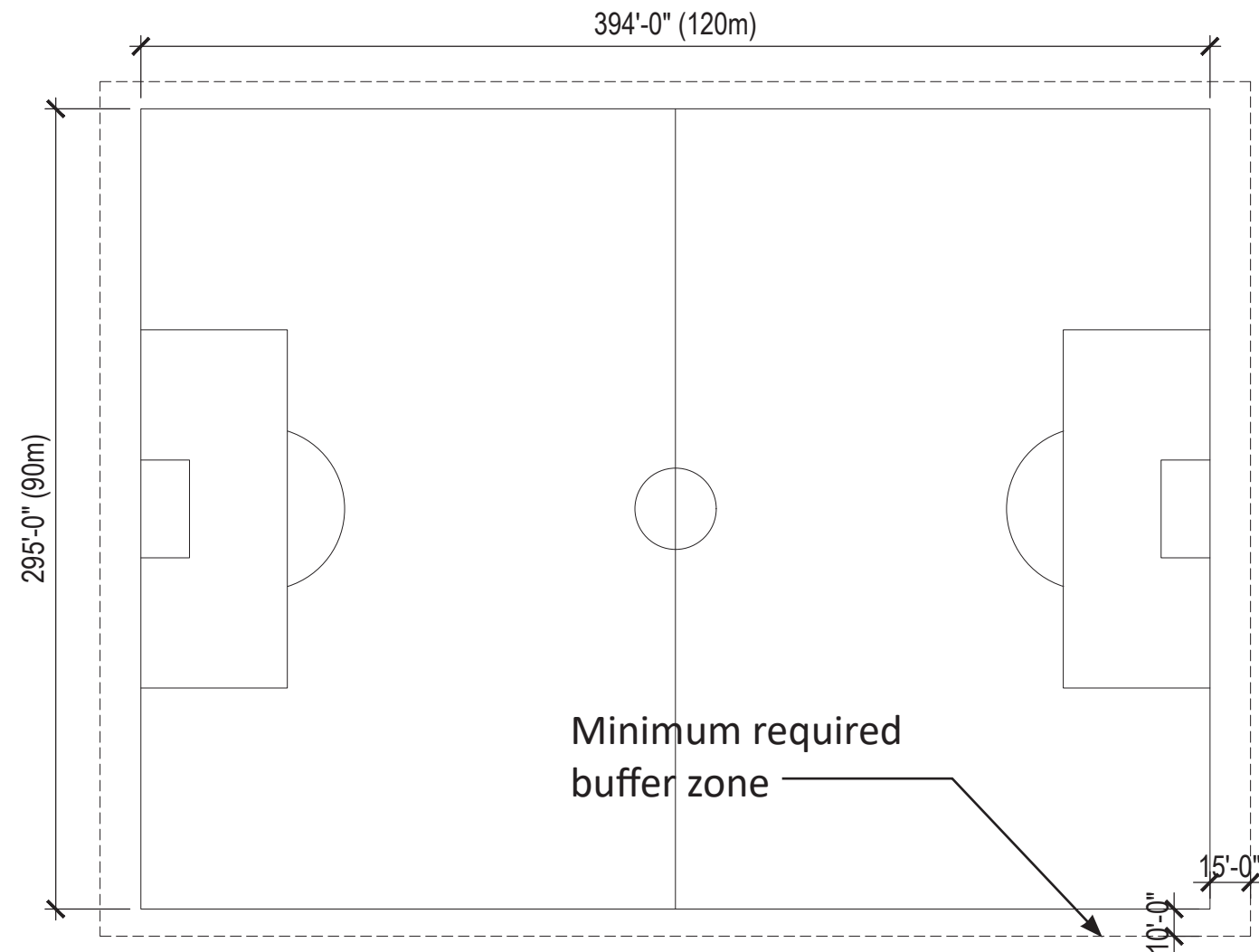
Secondary Entrance (Proposed Ramp)



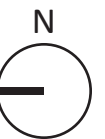
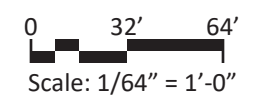
Existing Bleachers

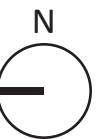
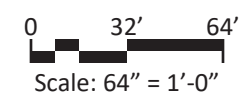
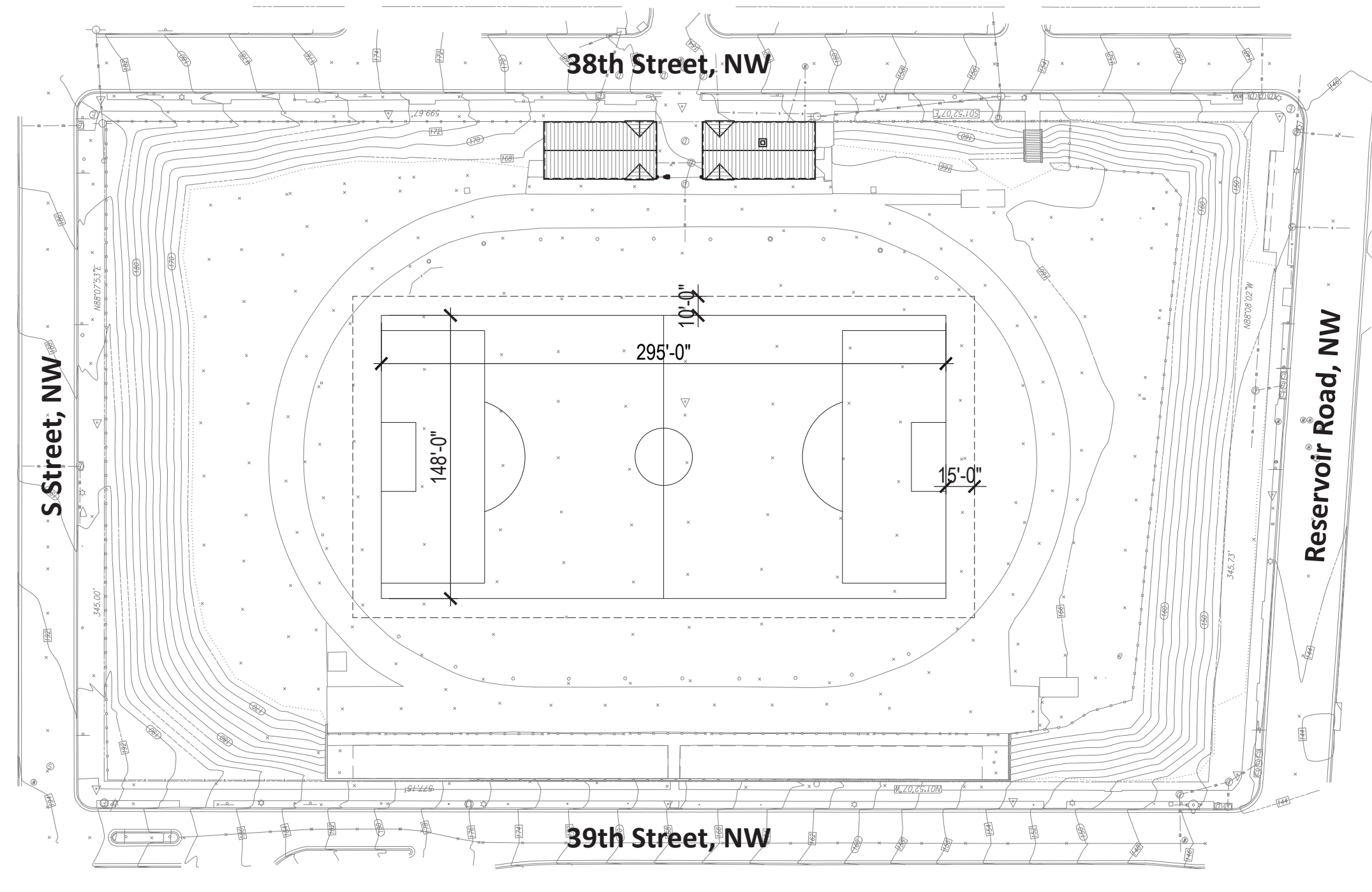


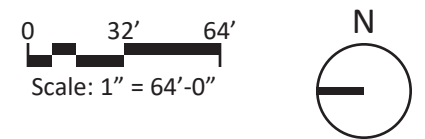
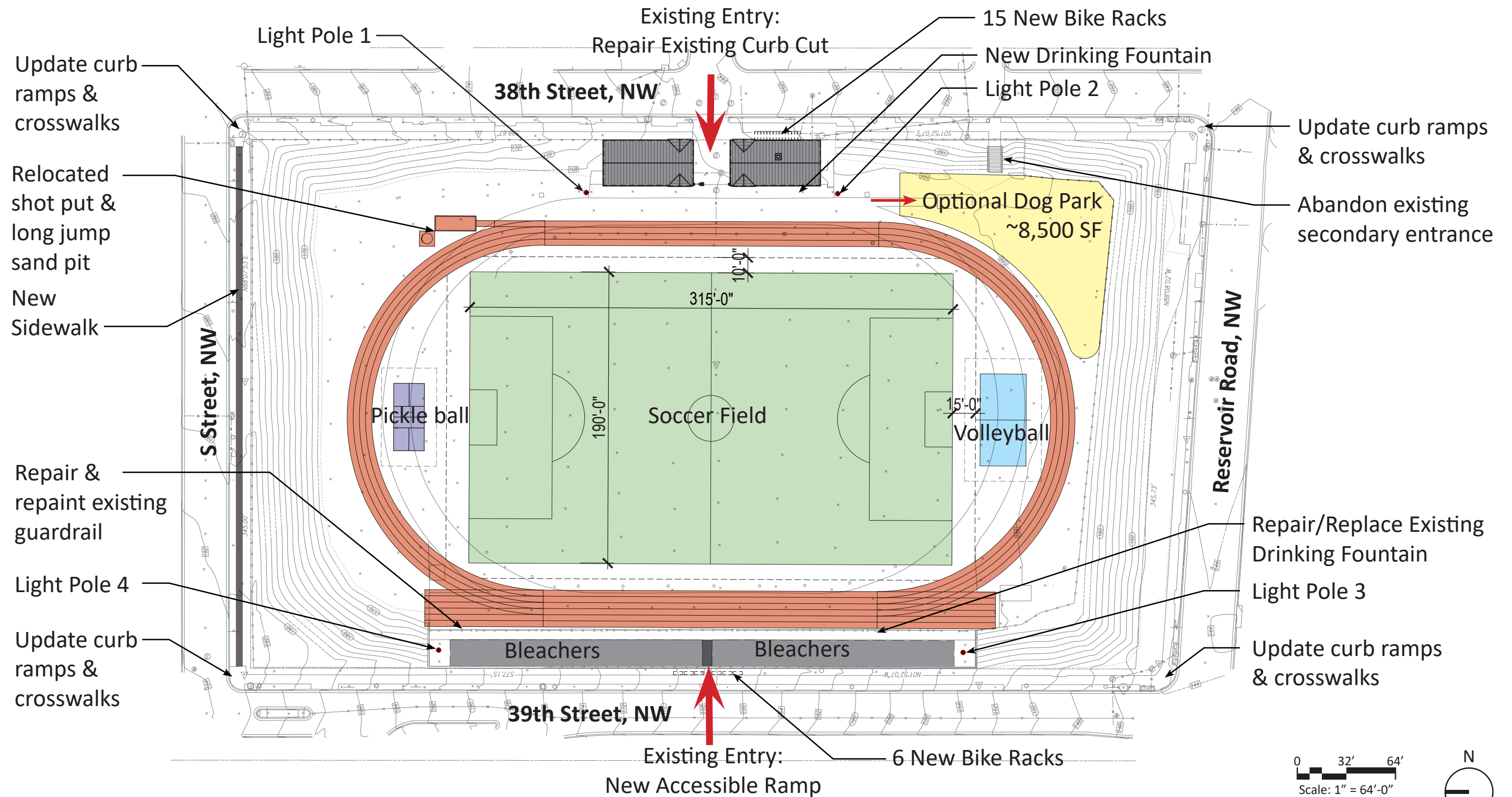
Minimum FIFA Regulation Soccer Field

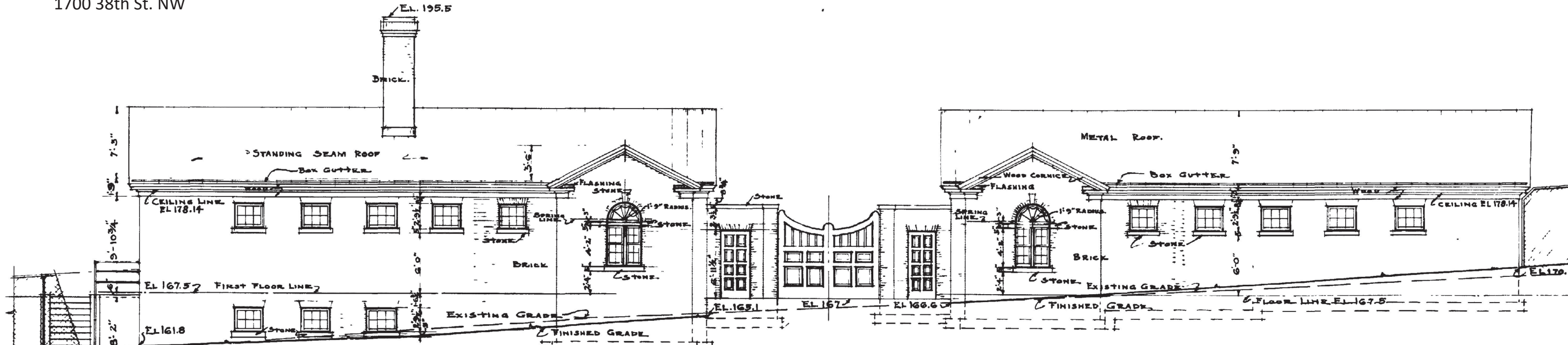


Maximum FIFA Regulation Soccer Field

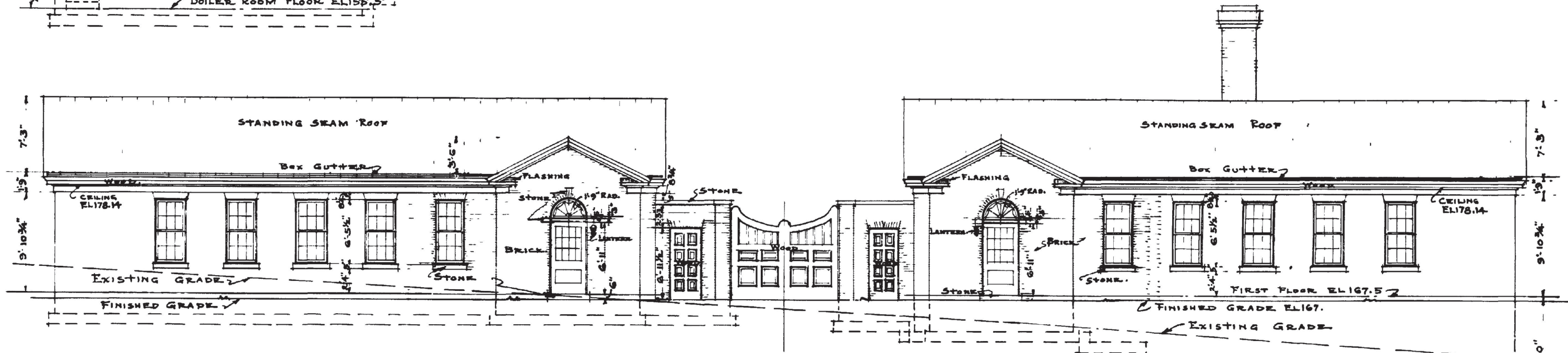




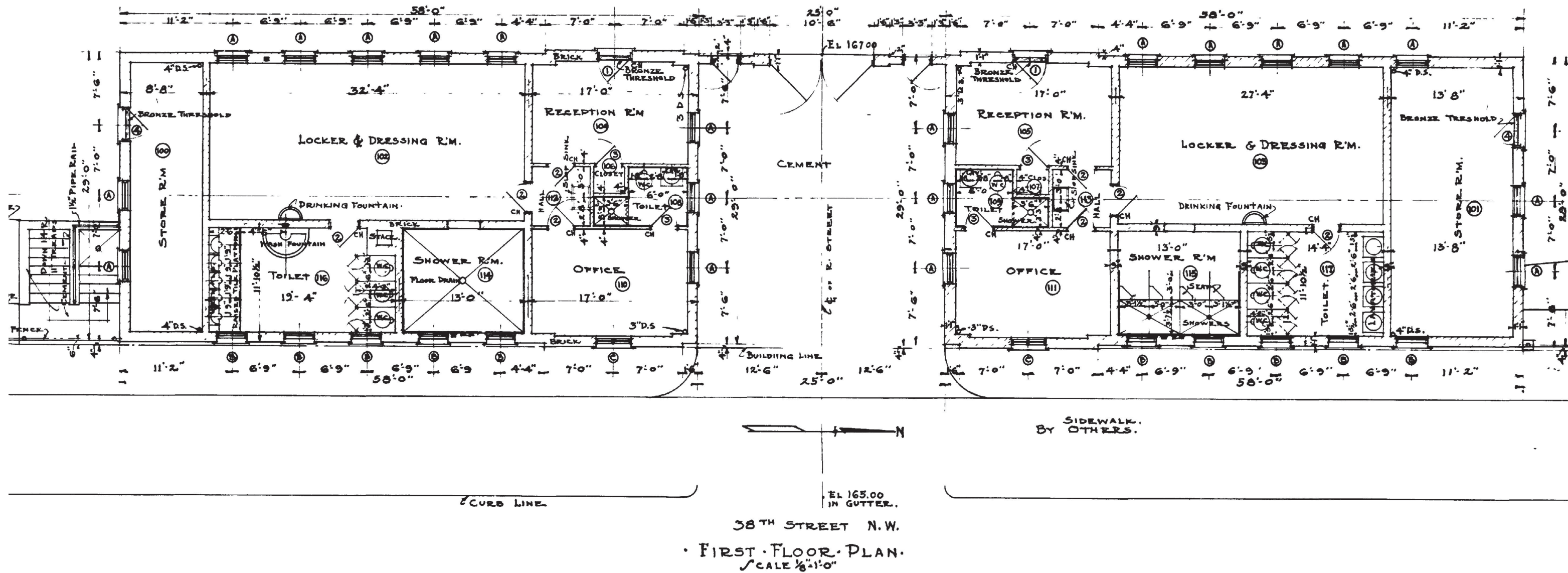


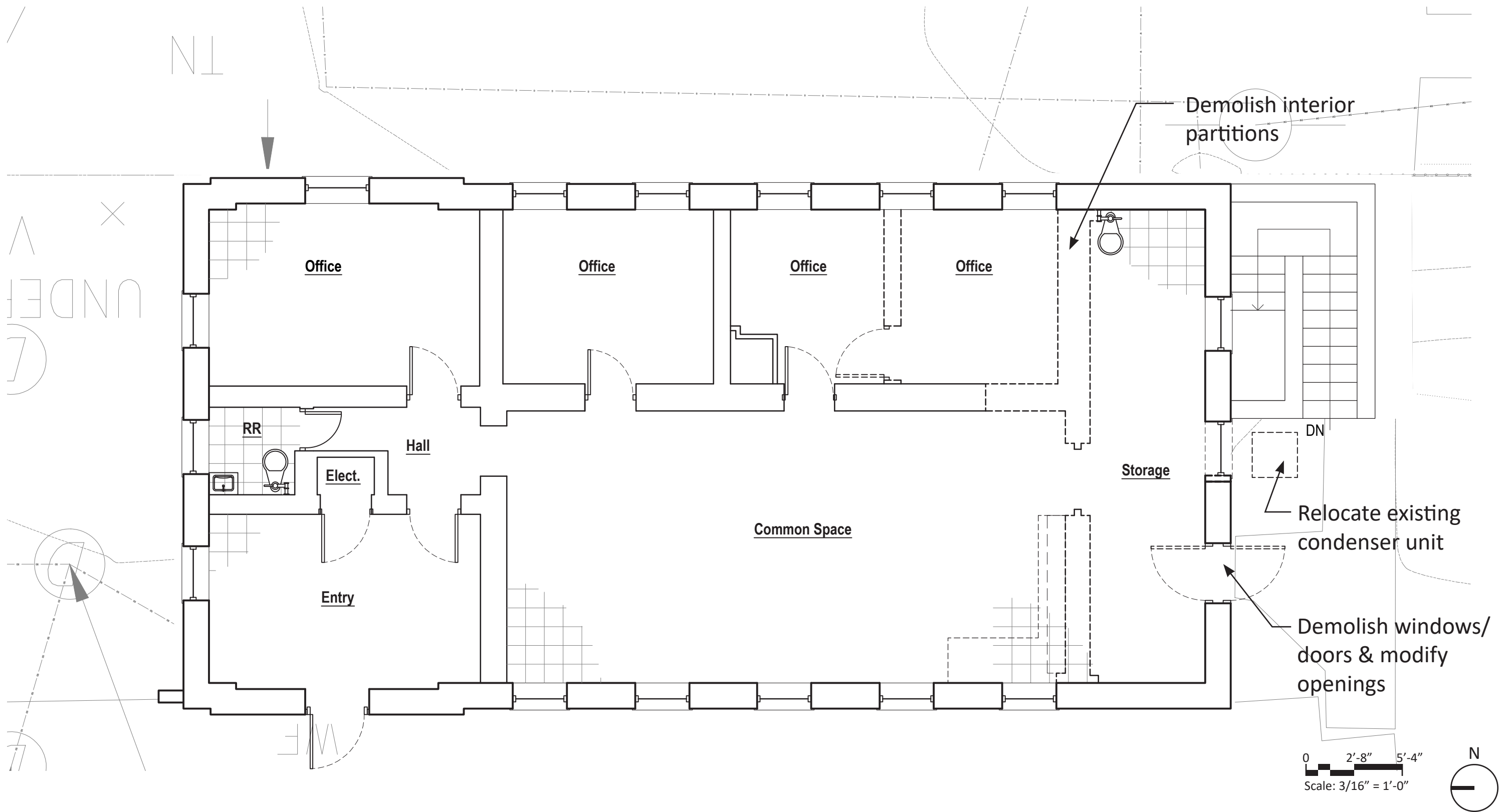


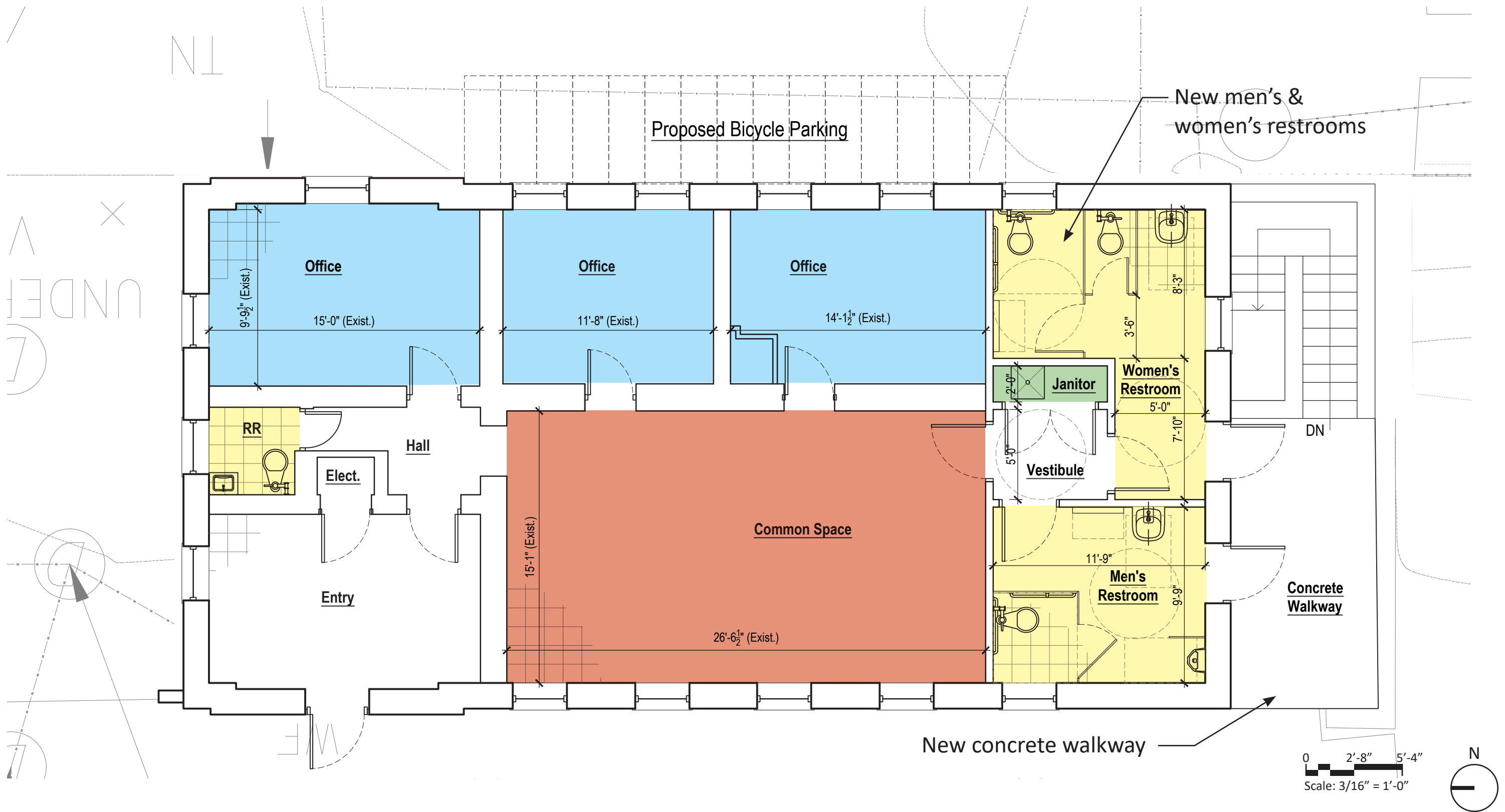
EAST ELEVATION.
SCALE 1/8"=1'-0"

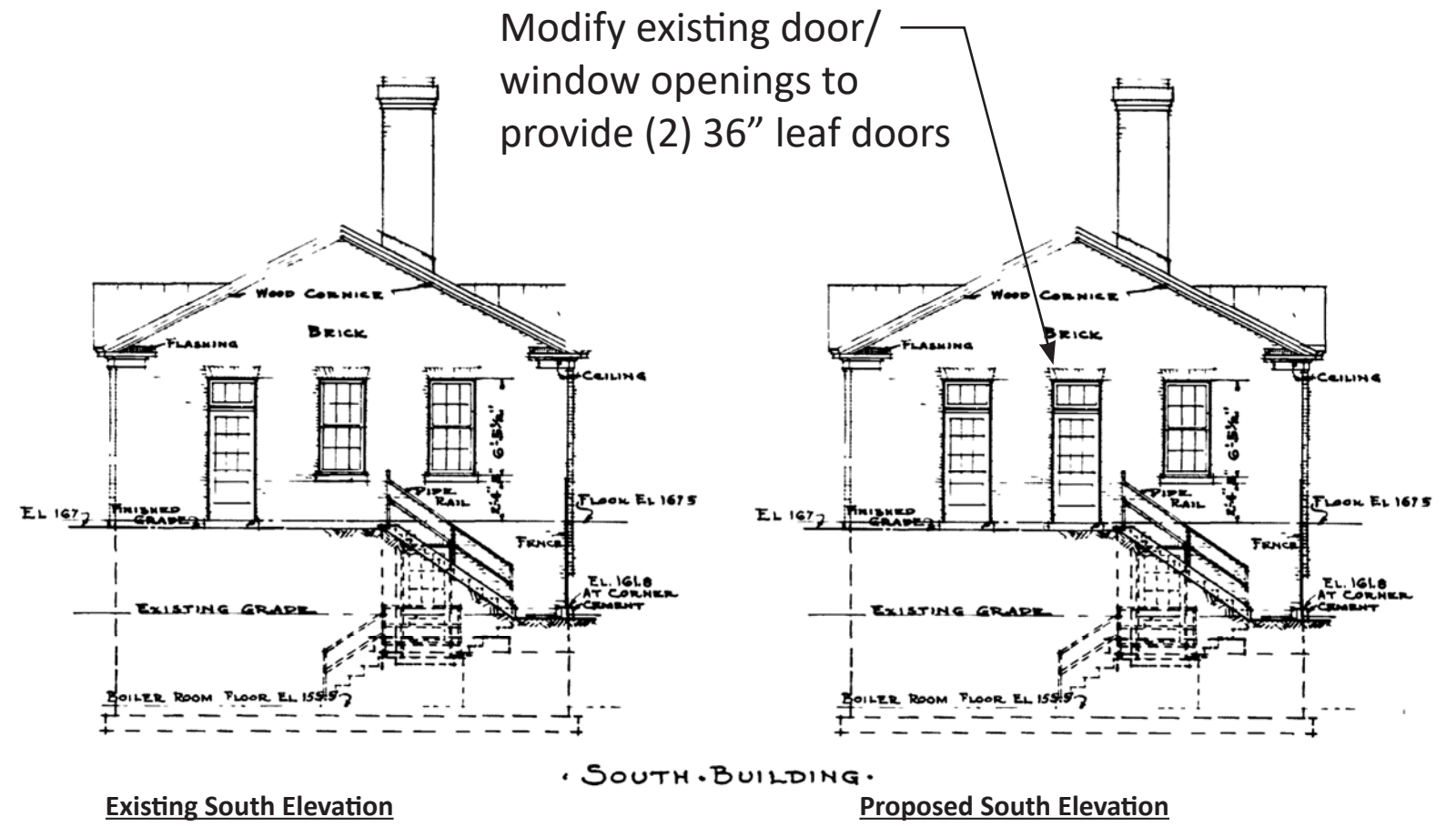


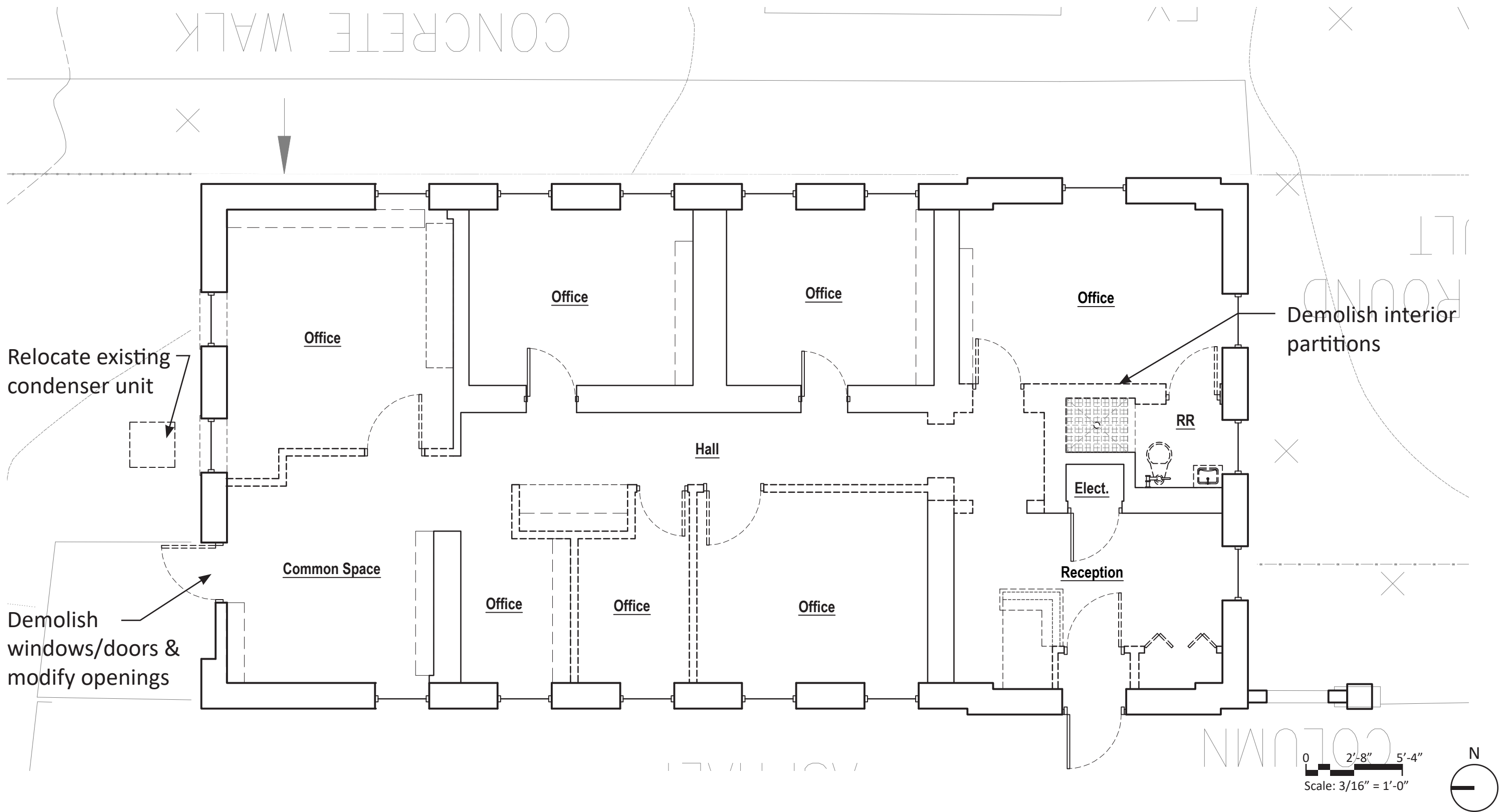
WEST ELEVATION.
SCALE 1/8"=1'-0"







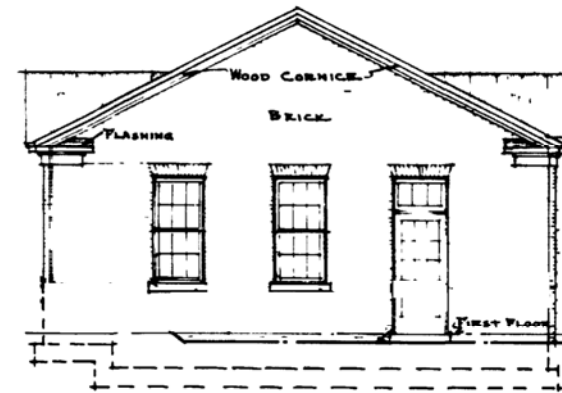




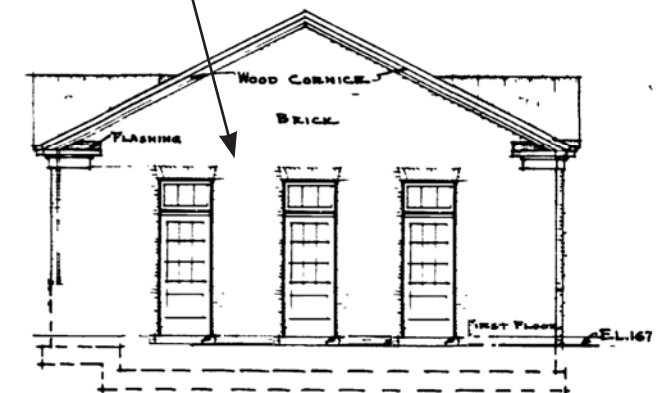




Modify existing door/
window openings to
provide (3) 32" leaf doors



Existing North Elevation



Proposed North Elevation

• NORTH • BUILDING •

TLC for LED[®]
Total Light Control[™]

Other Light Source Option
Green Generation[®] Lighting
Metal Halide
10 year warranty

“LEDs must be carefully integrated into lighting fixtures. The efficiency of a poorly designed fixture that uses even the best LEDs will be only a fraction of what it would be if the fixture were well-designed, and the design can also affect lumen maintenance.”
— U.S. Department of Energy
www.energy.gov/eere/ssl/led-basics



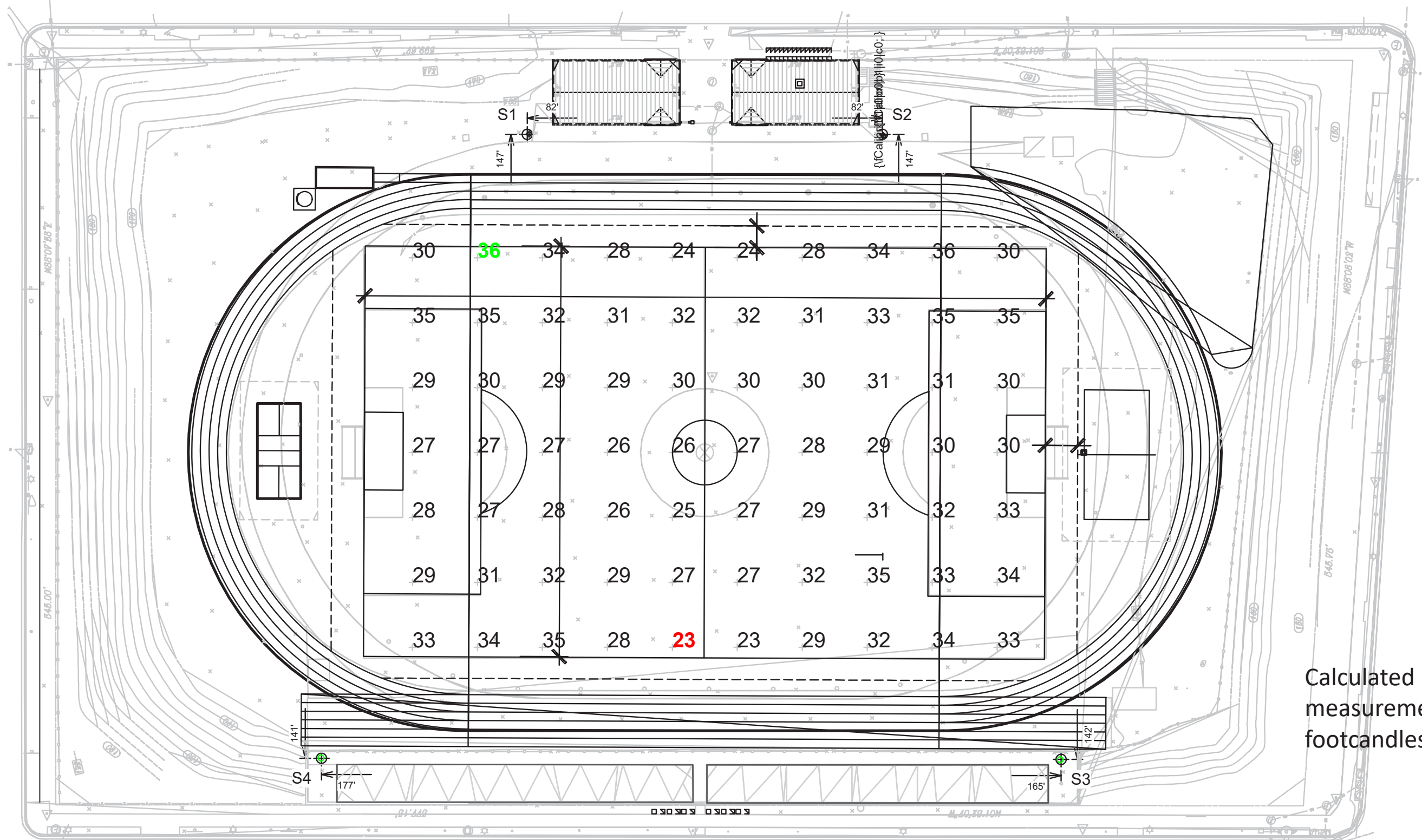
increasing efficiency and decreasing environmental impact. →

Today	Today
Musco LED System	Other Luminaire Manufacturer LED

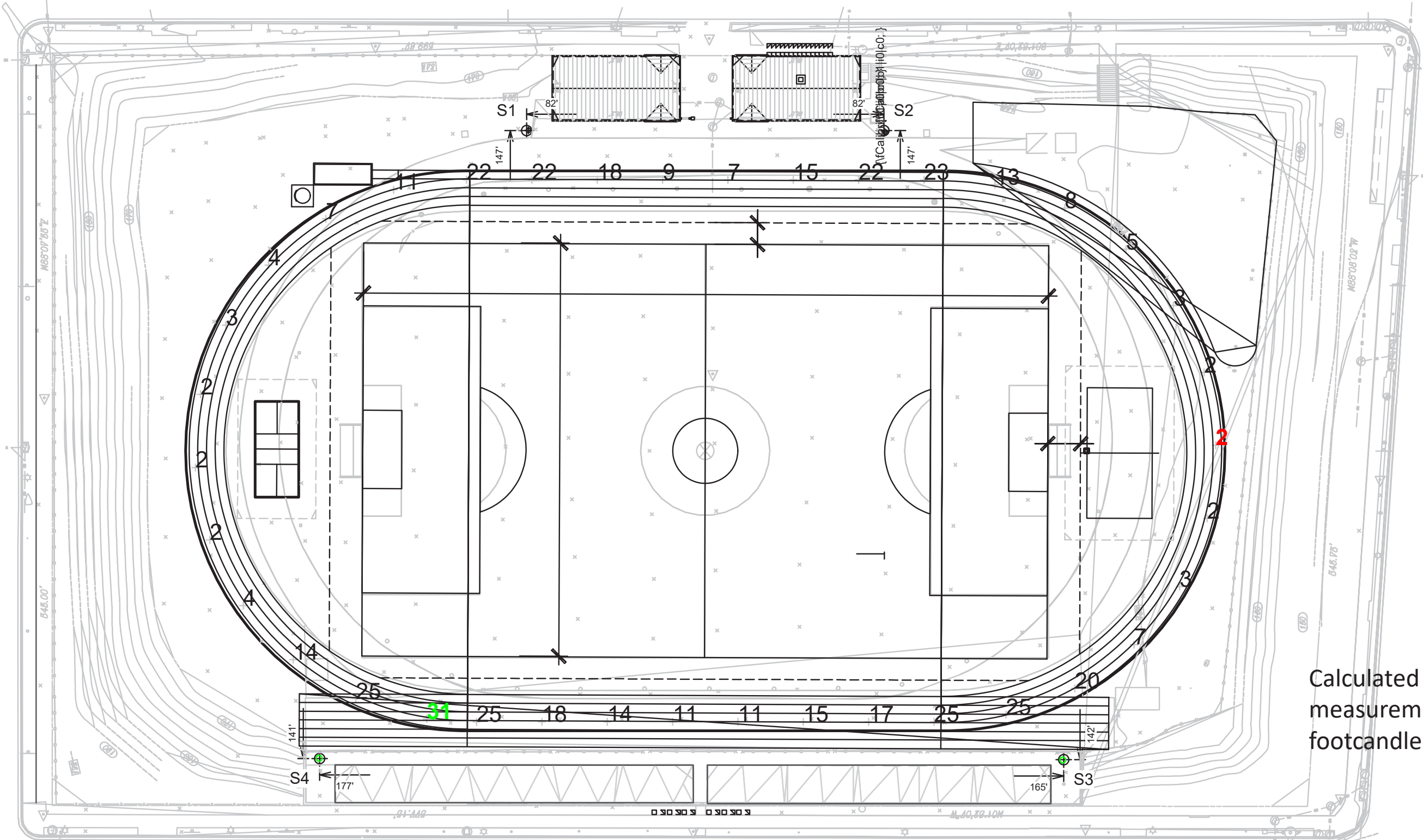
Light Energy: Use, Lose, Abuse

On field | Off site

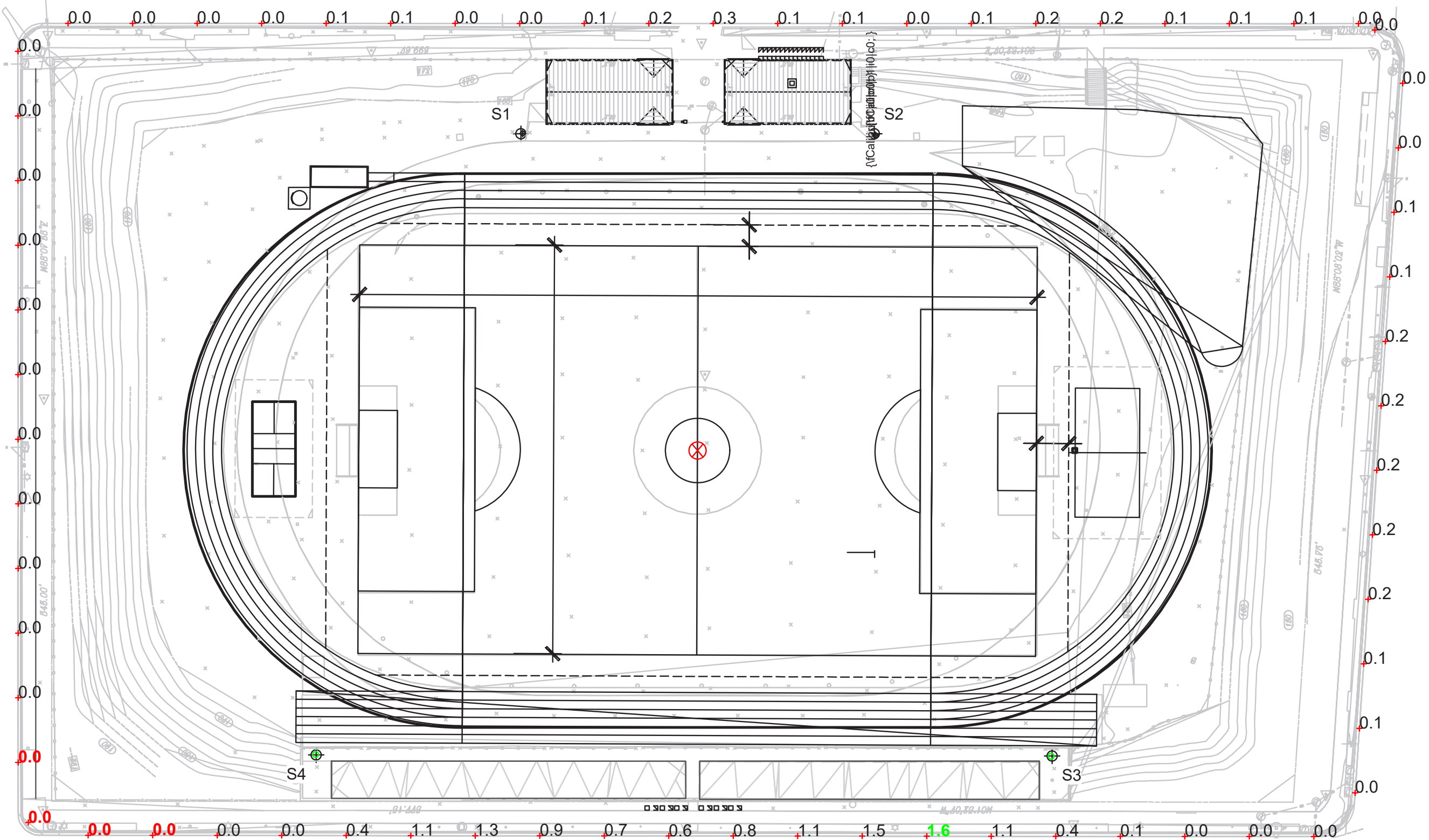
What often is	What can be

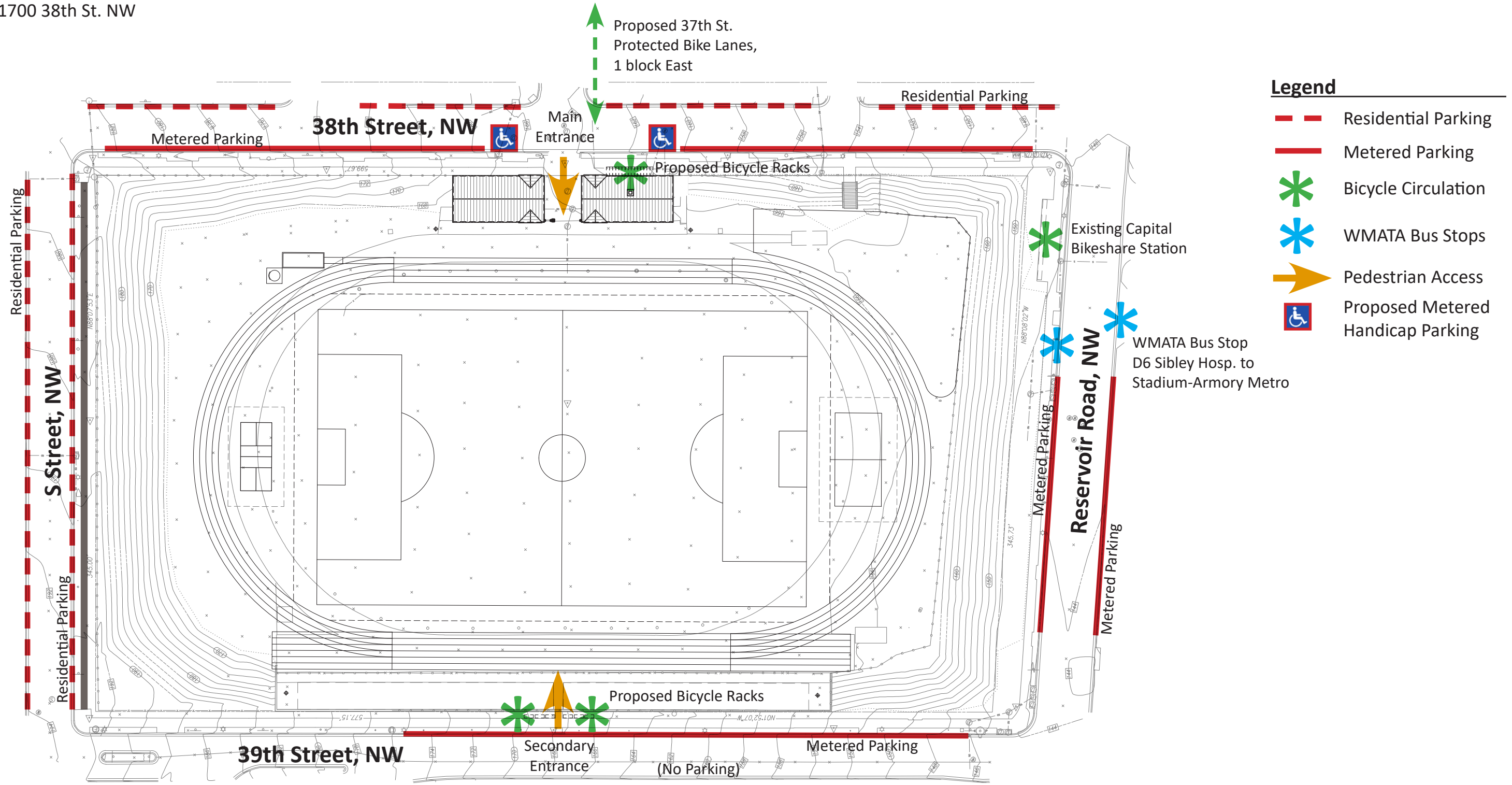


Calculated
measurements in
footcandles at grade

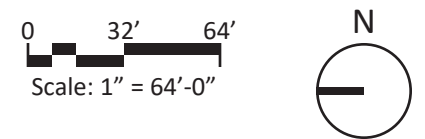


Calculated measurements in footcandles at grade





- Legend**
- - - Residential Parking
 - Metered Parking
 - * Bicycle Circulation
 - * WMATA Bus Stops
 - ➔ Pedestrian Access
 - Proposed Metered Handicap Parking



Next Steps:

- Schedule an evening tour of Takoma Soccer Field in October
- Release design package and consultant reports on the project website:
 - Concept Design Package
 - Traffic Study
 - Archaeological Report
 - Geotechnical Report
 - Arborist's Report
- Next community meeting in November
- Design/builder on board winter 2022
- Construction complete late 2022

Contacts: Peter Nohrden peter.nohrden@dc.gov Wayne Gore wayne.gore@dc.gov