

elev★te



FRIENDSHIP RECREATION CENTER COMMUNITY MEETING

July 26, 2016

AGENDA

- ✓ **Playground Design**
- ✓ **Commemorative Bricks**
- ✓ **Construction Update**
- ✓ **Next Steps**

Site Plan



Playground Design

Previous Community Playground Comments

- ✓ Additional Swings
- ✓ Additional Bucket Swings
- ✓ Additional Movement Equipment (Zip Line)
- ✓ Overhead Play
- ✓ Platform Space (Socializing Play Space)

Burke
PLAY THAT MOVES YOU.

BCIBURKE.COM | 800.266.1250



Tot Lot

FRIENDSHIP RECREATION CENTER



BCIBURKE.COM | 800.266.1250

Burke
REINVENTING PLAY SINCE 1920



FRIENDSHIP RECREATION CENTER

Tot Lot

Burke
PLAY THAT MOVES YOU.

BCIBURKE.COM | 800.266.1250



Big Kid Play

FRIENDSHIP RECREATION CENTER



Burke
PLAY THAT MOVES YOU.

BCIBURKE.COM | 800.266.1250



Big Kid Play

FRIENDSHIP RECREATION CENTER



FEATURED PLAY EVENTS



Arch Swings

Swings help children develop coordination and balance while providing an engaging sensory experience.



Orbitron

The all new Orbitron challenges children ages 5 – 12 to utilize their strength and coordination.



Kid Koaster

Overhead events build upper body strength and endurance, improve eye-hand coordination and elevate children's self-confidence.

BCBURKE.COM

Burke

800.266.1250

FEATURED PLAY EVENTS



Viper Slide

The Viper Slide can't be tamed, but kids love trying! Viper's exciting twisty and fast serpentine action is guaranteed to generate incredible high-energy fun and safe, healthy play.



EXCLUSIVE

Rock Climber

Climbers provide several developmental benefits to children, building upper body strength along with boosting balance and coordination while they play.

BCBURKE.COM

Burke

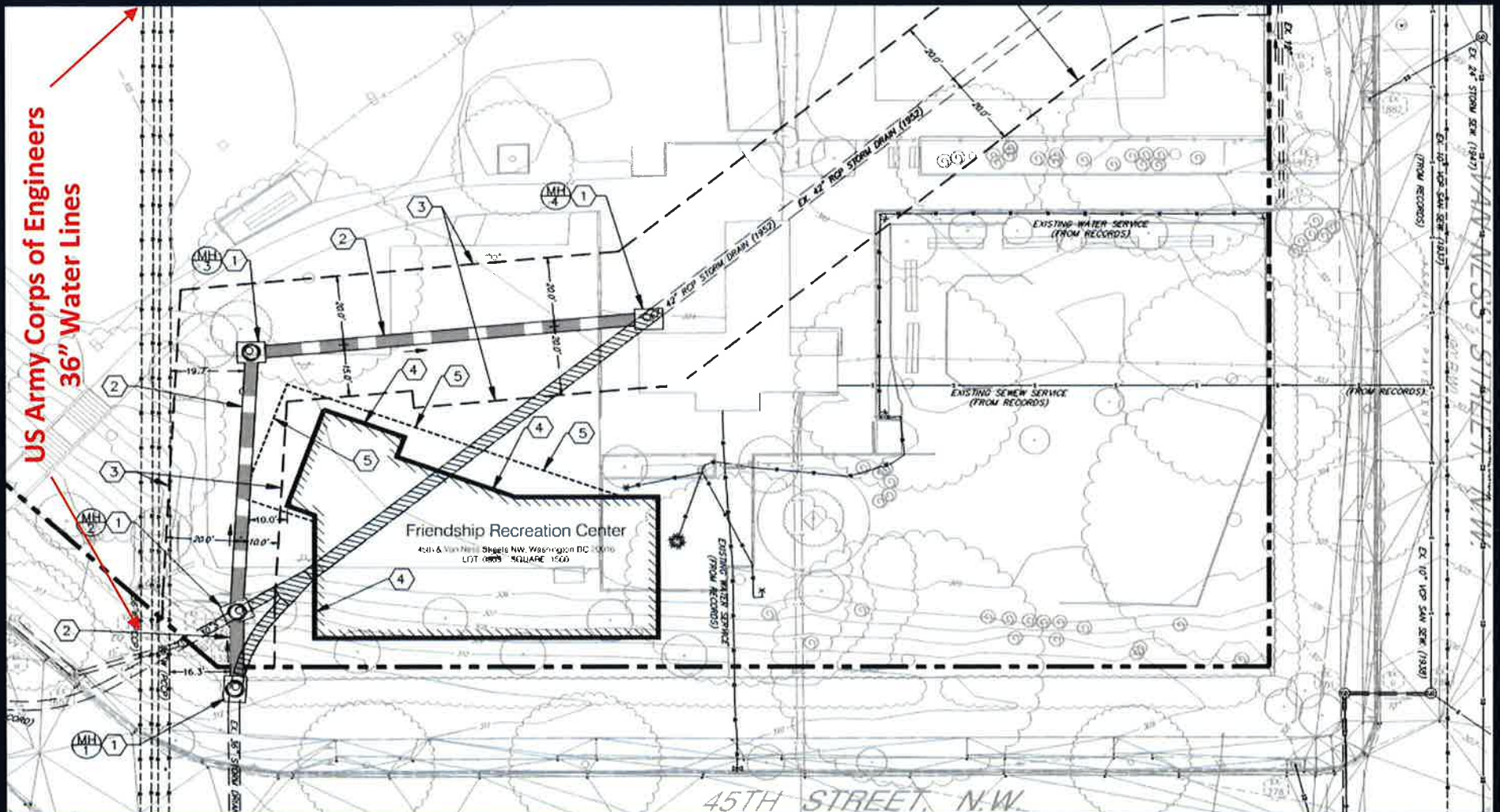
800.266.1250

Commemorative Bricks



Project Update

The new Friendship building has to shift ten feet to the north to ensure compliance with the Army Corps of Engineer utility line easement requirements. The plan below shows the location of the building shift. Shifting of the building will **not** result in any changes to the building's size, layout or programmable space.



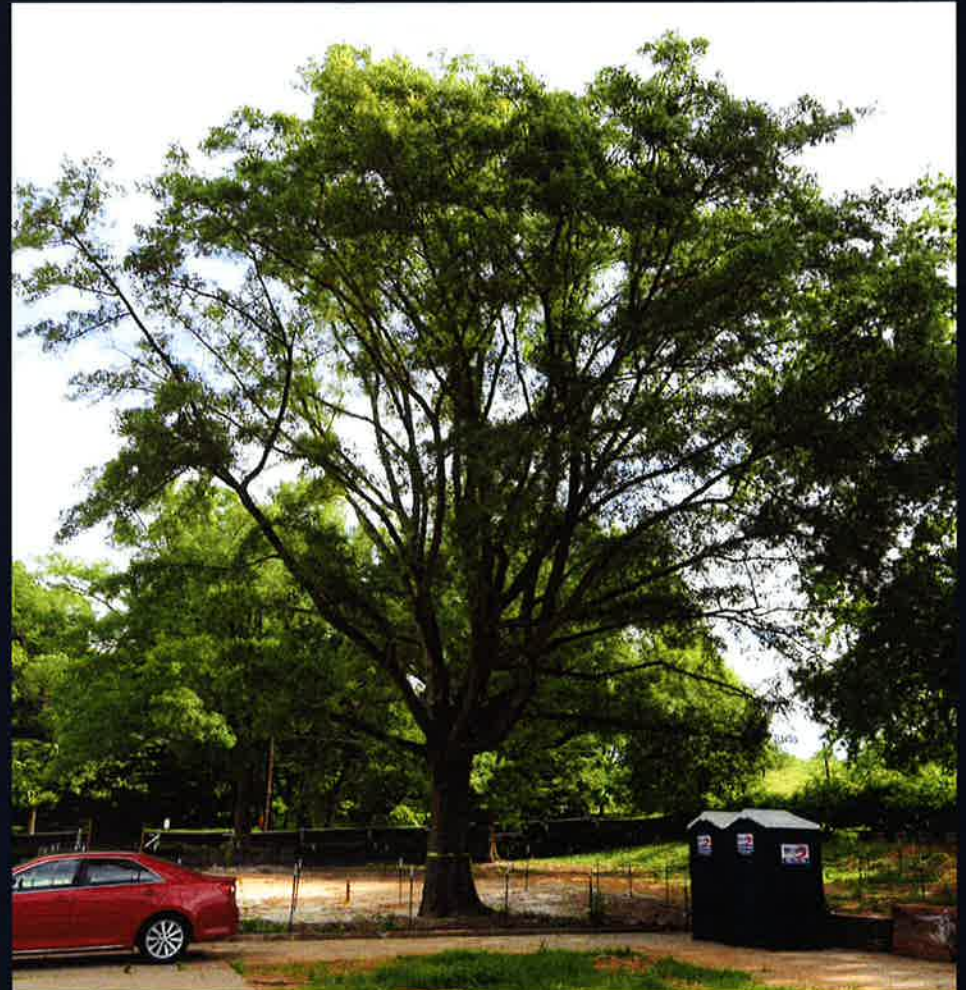
Trees that may be removed due to their health and/or the shifting of the building



Tree 7 (Left) Tree 6 (Right)



Tree 16



Tree 30

Next Steps Moving Forward



- ✓ August 2016 - Sewer Line Relocation
- ✓ September 2016 - Sewer Line Relocation Completion
- ✓ October 2016 – Installation of Underground Utilities
- ✓ January 2017- Building Shell Completion
- ✓ March 2017 - Interior Building Completion
- ✓ Spring 2017 - Project Completion (Including Playground)

Contact Information

Department of General Services (DGS)

Jackie Stanley, Community Outreach Specialist

Jackie.Stanley@dc.gov

Shahrokh Ghahramani, Project Manager

Shahrokh.Ghahramani@dc.gov

Department of Parks & Recreation (DPR)

Brent Sisco, Landscape Architect

Brent.Sisco@dc.gov