

ATTACHMENT A-5

ELECTRICAL ABBREVIATIONS

| | |
|----------|----------------------------------|
| A | AMPERE |
| ABV | ABOVE |
| AFCI | ARC FAULT CIRCUIT INTERRUPTER |
| AFF | ABOVE FINISHED FLOOR |
| AIC | AVAILABLE INTERRUPTING CURRENT |
| AL | ALUMINUM |
| AWG | AMERICAN WIRE GAUGE |
| BLDG | BUILDING |
| C or CND | CONDUIT |
| C/B | CIRCUIT BREAKER |
| CFL | COMPACT FLOURESCENT |
| CKT | CIRCUIT |
| CLG | CEILING |
| C/T | CURRENT TRANSFORMER |
| CU | COPPER |
| D or DED | DEDICATED |
| DN | DOWN |
| DTT | DOUBLE TWIN TUBE |
| DWG | DRAWING |
| EA | EACH |
| EC | EMPTY CONDUIT |
| EG | EQUIPMENT GROUND |
| EM | EMERGENCY |
| ETR | EXISTING TO REMAIN |
| EX, E | EXISTING |
| FA | FIRE ALARM |
| FAAP | FIRE ALARM ANNUNCIATOR PANEL |
| FACP | FIRE ALARM CONTROL PANEL |
| FLA | FULL LOAD AMPS |
| FLR | FLOOR |
| FSS | FUSED SAFETY SWITCH |
| GFI | GROUND FAULT CIRCUIT INTERRUPTER |
| HP | HORSEPOWER |
| HZ | HERTZ |
| J/B | JUNCTION BOX |
| K | THOUSAND |
| KW | KILOWATT |
| KVA | KILOVOLT AMPERE |
| LC | LIGHTING CONTROLLER |
| LCP | LIGHTING CONTROL PANEL |
| LF | LINEAR FOOT |
| MAX | MAXIMUM |
| MCA | MINIMUM CIRCUIT AMPACITY |
| MCB | MAIN CIRCUIT BREAKER |
| MCM | THOUSAND CIRCULAR MILS |
| MH | METAL HALIDE |
| MIN | MINIMUM |
| MLO | MAIN LUGS ONLY |
| NEC | NATIONAL ELECTRIC CODE |
| NF | NON-FUSIBLE |
| NFSS | NON-FUSED SAFETY SWITCH |
| NIC | NOT IN CONTRACT |
| P | POLES |
| PNL | PANEL |
| RECEP | RECEPTACLE |
| TEL | TELEPHONE |
| TT | TWIN TUBE |
| TYP | TYPICAL |
| UON | UNLESS OTHERWISE NOTED |
| V | VOLTS |
| W | WATTS |
| WP | WEATHERPROOF |
| W/ | WITH |
| Ø or PH | PHASE |

ELECTRICAL SYMBOLS

| | |
|--|--|
| | KEYNOTE PLAN DESIGNATION |
| | FUTURE ITEM |
| | RECESSED LIGHT FIXTURE, UPPERCASE LETTER INDICATES TYPE. LOWERCASE LETTER INDICATES SWITCHING ZONE. |
| | STRIP LIGHT FIXTURE, UPPERCASE LETTER INDICATES TYPE. LOWERCASE LETTER INDICATES SWITCHING ZONE. |
| | RECESSED OR WALL MOUNTED LIGHT FIXTURE, UPPERCASE LETTER INDICATES TYPE. LOWERCASE LETTER INDICATES SWITCHING ZONE. |
| | PENDANT LIGHT FIXTURE |
| | WALLWASH LIGHT FIXTURE, ARROW INDICATES AIM OF LIGHT. |
| | EMERGENCY LIGHT FIXTURE, UPPERCASE LETTER INDICATES TYPE. LOWERCASE LETTER INDICATES SWITCHING ZONE. |
| | EXIT LIGHTING FIXTURE, CEILING OR WALL MOUNTED. DIRECTIONAL ARROWS INDICATED ON PLANS |
| | EMERGENCY LIGHTING UNIT, WALL MOUNTED. |
| | COMBINATION EXIT SIGN - EMERGENCY LIGHTING UNIT, CEILING OR WALL MOUNTED. |
| | SINGLE POLE FLUSH TUMBLER SWITCH, MOUNT 48" AFF UNLESS OTHERWISE NOTED. LETTER INDICATES SWITCHING ZONE. |
| | S _{OS} OCCUPANCY SENSOR FLUSH SWITCH, MOUNT 48" AFF UNLESS OTHERWISE NOTED |
| | Ⓢ CEILING MOUNTED OCCUPANCY SENSOR, WATT STOPPER DT300 OR EQUIVALENT, PROVIDE POWER PACKS AS NEEDED. |
| | S ₃ S ₄ THREE WAY OR FOUR WAY FLUSH TUMBLER SWITCH, MOUNT 48" AFF UNLESS OTHERWISE NOTED |
| | ⊖ SIMPLEX RECEPTACLE, 2P, 3W, 20A, 125 V, NEMA 5-20R FLUSH MOUNTED 18" AFF UNLESS OTHERWISE NOTED. C INDICATES CEILING MOUNTED. |
| | ⊖ DUPLEX RECEPTACLE, 2P, 3W, 20A, 125 V, NEMA 5-20R FLUSH MOUNTED 18" AFF UNLESS OTHERWISE NOTED. C INDICATES CEILING MOUNTED. |
| | ⊖ GFCI RECEPTACLE, 2P, 3W, 20A, 125 V, NEMA 5-20R FLUSH MOUNTED 18" AFF UNLESS OTHERWISE NOTED |
| | ⊖ QUADRUPLEX RECEPTACLE, 2P, 3W, 20A, 125 V, NEMA 5-20R FLUSH MOUNTED 18" AFF UNLESS OTHERWISE NOTED. C INDICATES CEILING MOUNTED. |
| | ⊖ SPECIAL RECEPTACLE, TYPE AS INDICATED. MOUNT AT 18" AFF UNLESS OTHERWISE NOTED. |
| | JUNCTION BOX, CEILING OR WALL MOUNTED |
| | MOTOR |
| | SM MANUAL MOTOR CONTROLLER |
| | □ SAFETY SWITCH (FSS - FUSIBLE, NFSS - NON-FUSIBLE) |
| | ↑ BRANCH CIRCUIT HOMERUN TO PANELBOARD, PROVIDE THREE WIRES UNLESS CROSSMARKS ARE SHOWN INDICATING THE NUMBER OF WIRES. PROVIDE EQUIPMENT GROUND IN ACCORDANCE WITH SPECIFICATIONS |
| | EQUIPMENT GROUND |
| | PANELBOARD |
| | ▽ TELEPHONE OUTLET MOUNTED AT 18" AFF UNLESS OTHERWISE NOTED. PROVIDE WITH 3/4" EMPTY CONDUIT WITH PULLSTRING TO 6" ABOVE ACCESSIBLE CEILING. |
| | ▽ DATA OUTLET MOUNTED AT 18" AFF UNLESS OTHERWISE NOTED. PROVIDE WITH 3/4" EMPTY CONDUIT WITH PULLSTRING TO 6" ABOVE ACCESSIBLE CEILING. C INDICATES CEILING MOUNTED. |
| | ▽ TELEPHONE/DATA OUTLET 18" AFF UNLESS OTHERWISE NOTED. PROVIDE WITH 3/4" EMPTY CONDUIT WITH PULLSTRING TO 6" ABOVE ACCESSIBLE CEILING. |
| | ⊙ SMOKE DETECTOR |
| | ⊙ HEAT DETECTOR |
| | ⊙ FIRE ALARM VISUAL ONLY SIGNALING DEVICE MOUNTED 80" AFF TO BOTTOM OF DEVICE, UNLESS OTHERWISE NOTED. CANDELA RATING INDICATED ON PLANS. C INDICATES CEILING MOUNTED. |
| | ⊙ FIRE ALARM AUDIO ONLY SIGNALING DEVICE MOUNTED 80" AFF TO BOTTOM OF DEVICE, UNLESS OTHERWISE NOTED. C INDICATES CEILING MOUNTED. |
| | ⊙ FIRE ALARM AUDIO-VISUAL SIGNALING DEVICE MOUNTED 80" AFF TO BOTTOM OF DEVICE, UNLESS OTHERWISE NOTED. CANDELA RATING INDICATED ON PLANS. C INDICATES CEILING MOUNTED. |
| | ⊙ FIRE ALARM PULL STATION DEVICE MOUNTED 48" AFF HANDLE OF DEVICE, UNLESS OTHERWISE NOTED |
| | FACP FIRE ALARM CONTROL PANEL |
| | FAAP FIRE ALARM ANNUNCIATOR PANEL |

ELECTRICAL GENERAL NOTES

- ALL WORK SHALL BE IN ACCORDANCE WITH LOCAL JURISDICTION HAVING AUTHORITY, ALL APPLICABLE DISTRICT OF COLUMBIA (DC) CODE REQUIREMENTS, THE NATIONAL ELECTRICAL CODE (NEC), AND THE LIFE SAFETY CODE.
- THE CONTRACTOR SHALL OBTAIN ALL TRADE PERMITS AND ARRANGE FOR ALL INSPECTIONS BY LOCAL AUTHORITIES HAVING JURISDICTION.
- PRIOR TO BID, THE CONTRACTOR SHALL EXAMINE ALL PROJECT DOCUMENTS AND EXISTING CONDITIONS FOR ALL TRADES TO DEVELOP A COMPLETE UNDERSTANDING OF THE PROJECT SCOPE OF WORK. THE CONTRACTOR SHALL, UPON REVIEW OF THE DRAWINGS AND EXISTING CONDITIONS, ADVISE THE OWNER PRIOR TO BID OF ANY DISCREPANCIES WHICH WILL AFFECT THE WORK REQUIRED.
- ALL ELECTRICAL EQUIPMENT SHALL BE UNDERWRITERS LABORATORY (UL) LABELED OR LABELED BY AN APPROVED ACCREDITED AGENCY AND TESTING ORGANIZATION.
- IT IS THE INTENT OF THE CONTRACT DOCUMENTS TO INDICATE WORK THAT SHALL BE FULLY ADJUSTED, TESTED, AND READY FOR OPERATION. WHEREVER THE WORD "PROVIDE" IS USED, IT SHALL MEAN "FURNISH AND INSTALL COMPLETE AND READY FOR USE", UNLESS OTHERWISE NOTED.
- THE CONTRACTOR SHALL FURNISH, INSTALL, WIRE, CONNECT, AND ENERGIZE THE COMPLETE FUNCTIONAL SYSTEM REQUIRED, INCLUDING EQUIPMENT, DEVICES, WIRING, AND ALL OTHER APPURTENANCES AND HARDWARE FOR A COMPLETE SYSTEM.
- THE CONTRACTOR SHALL FURNISH AND INSTALL ALL ITEMS NECESSARY FOR THE COMPLETE INSTALLATION OF THE EQUIPMENT AS REQUIRED BY CODE WITHOUT ADDITIONAL COST TO THE OWNER, REGARDLESS WHETHER THE ITEMS ARE INDICATED IN THE CONTRACT DRAWINGS OR SPECIFICATIONS. SUCH ITEMS COULD BE, BUT ARE NOT LIMITED TO, SUPPORTS, WIRING, START-UP AND SERVICE, ETC.
- THE CONTRACTOR SHALL COMPLETELY COORDINATE WITH ALL OTHER TRADES.
- ALL CONFLICTS WHICH MAY PREVENT THE COMPLETION OF WORK SHALL BE BROUGHT TO THE ATTENTION OF THE OWNER'S REPRESENTATIVE. THE CONTRACTOR SHALL NOT PROCEED WITH RELATED WORK UNTIL THE CONFLICT IS RESOLVED.
- THE CONTRACTOR SHALL INSTALL ALL MECHANICAL AND ELECTRICAL EQUIPMENT IN ACCORDANCE WITH MANUFACTURERS RECOMMENDATIONS.
- ALL EQUIPMENT, DEVICES, AND RELATED APPURTENANCES SHALL BE THE LATEST PRODUCT OF THE SPECIFIED MANUFACTURERS UNLESS OTHERWISE NOTED.
- THE CONTRACT DRAWINGS ARE DIAGRAMMATIC AND DO NOT INDICATE ALL COMPONENTS AND ACCESSORIES REQUIRED FOR THE COMPLETE INSTALLATION. THE CONTRACTOR SHALL PROVIDE SUCH ITEMS TO COMPLETE THE ENTIRE SYSTEM AND PLACE IN PROPER OPERATION IN ACCORDANCE WITH APPLICABLE CODES, INDUSTRY STANDARDS, AND EQUIPMENT MANUFACTURER'S RECOMMENDATIONS.
- LOCATIONS OF EQUIPMENT, LIGHTING FIXTURES, DEVICES, ETC. ARE INDICATED DIAGRAMMATICALLY ON THE DRAWINGS. THE CONTRACTOR SHALL OBTAIN EXACT LOCATIONS AND ESTABLISH EXACT DIMENSIONS ON THE JOB SITE AFTER STUDYING THE CONDITIONS.
- THE CONTRACTOR SHALL REFER TO THE ARCHITECTURAL DRAWINGS FOR EXACT LOCATIONS, MOUNTING METHODS, AND DIMENSIONS OF LIGHT FIXTURES, LIFE SAFETY DEVICES, CEILING DEVICES, RECEPTACLES, TELEPHONE AND DATA OUTLETS, AND OTHER ITEMS VISIBLE IN PUBLIC AREAS.
- EXACT LOCATION AND MOUNTING HEIGHTS OF JUNCTION BOXES, OUTLETS, STUB-UPS, ETC. SHALL BE DETERMINED FROM CONTRACT DOCUMENTS, EQUIPMENT, DETAILS, SPECIFICATIONS WHERE APPLICABLE, AND MANUFACTURER'S ROUGH-IN DRAWINGS.
- ALL LIGHTING FIXTURE LOCATIONS SHALL BE COORDINATED WITH THE REFLECTED CEILING PLANS, ARCHITECTURAL SECTIONS AND DETAILS, MECHANICAL AND PLUMBING DRAWINGS AND SYSTEMS. SHOULD A DISCREPANCY ARISE, NOTIFY THE OWNER'S REPRESENTATIVE IMMEDIATELY.
- THE CONTRACTOR SHALL BE RESPONSIBLE FOR INSTALLING ALL ADDITIONAL CONDUIT, DEVICES, AND FITTINGS AS REQUIRED TO ASSURE THE ELECTRICAL DISTRIBUTION SYSTEMS ARE INSTALLED PROPERLY AND IN ACCORDANCE WITH CODE.
- THE CONTRACTOR SHALL INSTALL ALL ELECTRICAL SYSTEMS SO AS TO NOT INTERFERE WITH THE PLUMBING, STRUCTURAL, MECHANICAL, AND ARCHITECTURAL SYSTEMS. THE CONTRACTOR SHALL COORDINATE THIS PROJECT REQUIREMENT
- ALL ELECTRICAL SYSTEMS, DEVICES, AND RELATED ITEMS SHALL BE TESTED AT THE COMPLETION OF THE PROJECT. THE CONTRACTOR SHALL REPLACE ANY AND ALL DEFECTIVE DEVICES, ITEMS, OR SYSTEMS AT COMPLETION OF THE PROJECT.
- PROVIDE NFPA APPROVED FIRE STOPPING AT ALL CONDUIT PENETRATIONS OF FIRE RATED FLOORS, WALLS, AND COMPONENTS.
- ALL WORK SHALL BE PERFORMED IN A SUCH MANNER TO CREATE MINIMAL POWER OUTAGES FOR THE OWNER. ALL SUCH OUTAGES SHALL BE CAREFULLY COORDINATED WITH THE OWNER SO THAT POWER TO ESSENTIAL SERVICES CAN BE MAINTAINED.
- ELECTRICAL EQUIPMENT REQUIRING ACCESS SUCH AS JUNCTION BOXES, CONNECTIONS TO EQUIPMENT, ETC. SHALL NOT BE INSTALLED ABOVE INACCESSIBLE CEILINGS OR BEHIND WALLS.
- ALL BRANCH CIRCUIT WIRING ON THE DRAWINGS THAT IS UNMARKED INDICATES TWO CURRENT CARRYING CONDUCTORS AND A GROUNDING CONDUCTOR, UNLESS OTHERWISE NOTED ON THE PLANS OR THE PANEL SCHEDULES.
- THE NUMBER OF WIRES FOR EACH CIRCUIT ARE NOT INDICATED ON THE DRAWINGS UNLESS NECESSARY FOR CLARIFICATION. THE ELECTRICAL CONTRACTOR SHALL PROVIDE ALL WIRES NECESSARY FOR THE PROPER FUNCTION OF THE SYSTEM WHETHER INDICATED ON THE DRAWINGS OR NOT.
- ALL GROUNDING SHALL BE DONE AS PER NEC REQUIREMENTS. THE CONTRACTOR SHALL USE GREEN GROUND WIRE FOR GROUNDING.
- THE MECHANICAL CONTRACTOR SHALL FURNISH AND INSTALL MOTOR STARTERS FOR MECHANICAL EQUIPMENT AND THE EQUIPMENT SHALL BE WIRED BY THE ELECTRICAL CONTRACTOR.
- THE CONTRACTOR SHALL REFER TO MECHANICAL/PLUMBING DRAWINGS FOR EXACT LOCATION OF MECHANICAL/PLUMBING EQUIPMENT. THE ELECTRICAL CONTRACTOR SHALL COORDINATE AND VERIFY VOLTAGE/PHASE INDICATED ON ELECTRICAL DRAWINGS WITH MECHANICAL/PLUMBING EQUIPMENT TO BE PROVIDED PRIOR TO INSTALLING ELECTRICAL SERVICE. SHOULD A DISCREPANCY BE NOTED BETWEEN EQUIPMENT TO BE SUPPLIED AND WHAT IS INDICATED ON THE DRAWINGS, THE CONTRACTOR SHALL OBTAIN WRITTEN DIRECTION FROM OWNER'S REPRESENTATIVE BEFORE PROCEEDING WITH WORK.
- THE CONTRACTOR SHALL PERFORM THE FOLLOWING EQUIPMENT CONNECTIONS AS REQUIRED BY THE EQUIPMENT OR AS INDICATED IN THE CONTRACT DOCUMENTS: EXTEND AND CONNECT TO EQUIPMENT; MOUNT AND CONNECT TO STARTERS; INSTALL PUSH BUTTON STATION AND THERMAL OVERLOAD SWITCHES; FURNISH SUITABLE RECEPTACLES, PLUG, COVER PLATE, CORD, ARMORED CABLE, WIRE, DIRECT CONNECTIONS, DISCONNECT SWITCHES, ETC.
- ANY EQUIPMENT INCLUDING TELEPHONE/DATA CABLE LOCATED WITHIN A RETURN AIR PLENUM SHALL BE RATED FOR SUCH APPLICATION IN ACCORDANCE WITH APPLICABLE REGULATIONS.
- THE CONTRACTOR SHALL GUARANTEE ALL WORKMANSHIP, MATERIALS, EQUIPMENT, AND RELATED ITEMS FOR A PERIOD AFTER ACCEPTANCE OF THE PROJECT BY THE OWNER AND REPLACE ANY DEFECTIVE MATERIALS, EQUIPMENT, AND RELATED ITEMS WITHIN THE GUARANTEE PERIOD. THE PERIOD SHALL BE TWELVE MONTHS FROM THE COMPLETION OF THE PROJECT UNLESS SPECIFIED OTHERWISE IN THE SPECIFICATIONS OR CONTRACT DOCUMENTS.

MISSION BUILDING RENOVATION
808 & 810 5th Street NW
Washington, DC 20001
CORE AND SHELL
M+J Project No. 7952

Client
ROCK CREEK - 810 5th, LLC
1155 Connecticut Avenue, NW
Suite 700
Washington, DC 20036
202.835.1200

Architect
MARTINEZ+JOHNSON
ARCHITECTURE PC
1412 Eye Street NW
Washington DC 20005
202.333.4480

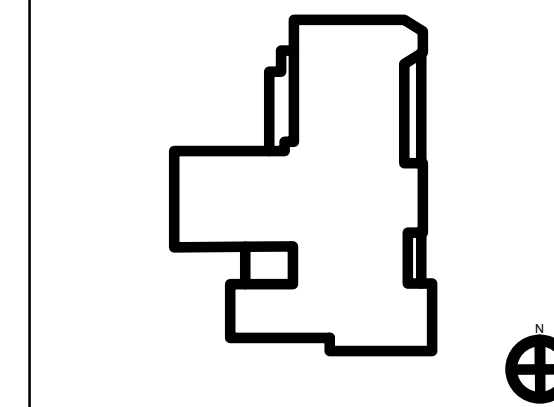
Structural Engineer
Structura Inc.
111 Rockville Pike
Suite 950
Rockville, MD 20850
301.987.9234

MEP Engineer
Aspire Engineering
9401 Lee Highway
Suite 410
Fairfax, VA 22031
703.539.8711

Civil Engineer
VIKA Capitol, LLC
4910 Massachusetts Ave
Suite 214
Washington, DC 20016
202.244.4140

THESE DRAWINGS, SPECIFICATIONS, AND OTHER DOCUMENTS, COLLECTIVELY, THE "DOCUMENTS" INCLUDING WITHOUT LIMITATION ELECTRONIC VERSIONS THEREOF AND THE IDEAS, DESIGN, AND ARRANGEMENTS REPRESENTED THEREBY, ARE AND SHALL REMAIN THE PROPERTY OF MARTINEZ+JOHNSON ARCHITECTURE PC, AS DEFINED BY APPLICABLE CONTRACTUAL AGREEMENTS (THE "AGREEMENTS") AND ARE PROTECTED BY THE COPYRIGHT STATUTES OF THE UNITED STATES. USE OF THE DOCUMENTS SHALL BE STRICTLY LIMITED TO THE PROJECT FOR WHICH THEY WERE PREPARED AND DEVELOPED ("THE PROJECT") PER THE TERMS OF THE AGREEMENTS. NO PART OF THE DOCUMENTS SHALL BE COPIED, DISCLOSED TO OTHERS, OR USED IN CONNECTION WITH ANY OTHER WORK OR PROJECT, OR BY ANY OTHER PERSONS FOR ANY PURPOSES OTHER THAN THE COMPLETION OF THE PROJECT, WITHOUT THE SPECIFIC WRITTEN AUTHORIZATION OF MARTINEZ+JOHNSON ARCHITECTURE PC. THE DOWNLOADING, COPYING, OR REPRODUCING OF ELECTRONIC VERSIONS OF THE DOCUMENTS OR VISUAL CONTACT WITH ANY PRINTED FORM THEREOF SHALL CONSTITUTE CONCLUSIVE EVIDENCE OF ACCEPTANCE OF THESE RESTRICTIONS.

KEY PLAN



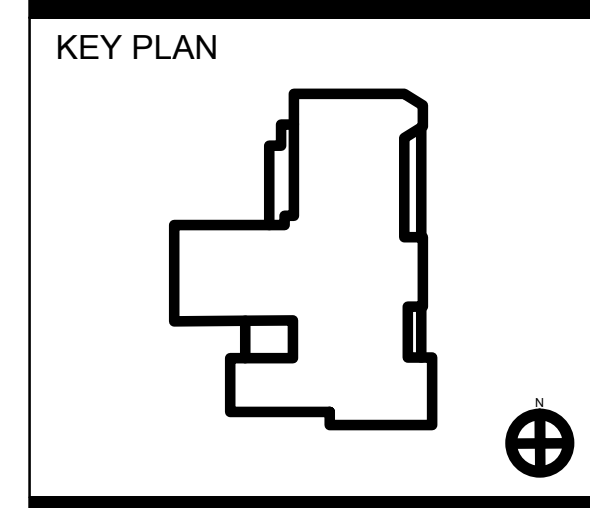
| DATE: | DESCRIPTION: |
|---------|-------------------|
| 6/13/14 | ISSUED FOR PERMIT |
| 8/08/14 | FINAL REVIEW SET |
| 9/16/14 | BID SET |
| | |
| | |
| | |
| | |
| | |
| | |
| | |
| | |
| | |
| | |

SHEET TITLE:

ELECTRICAL COVER SHEET

E-0.01

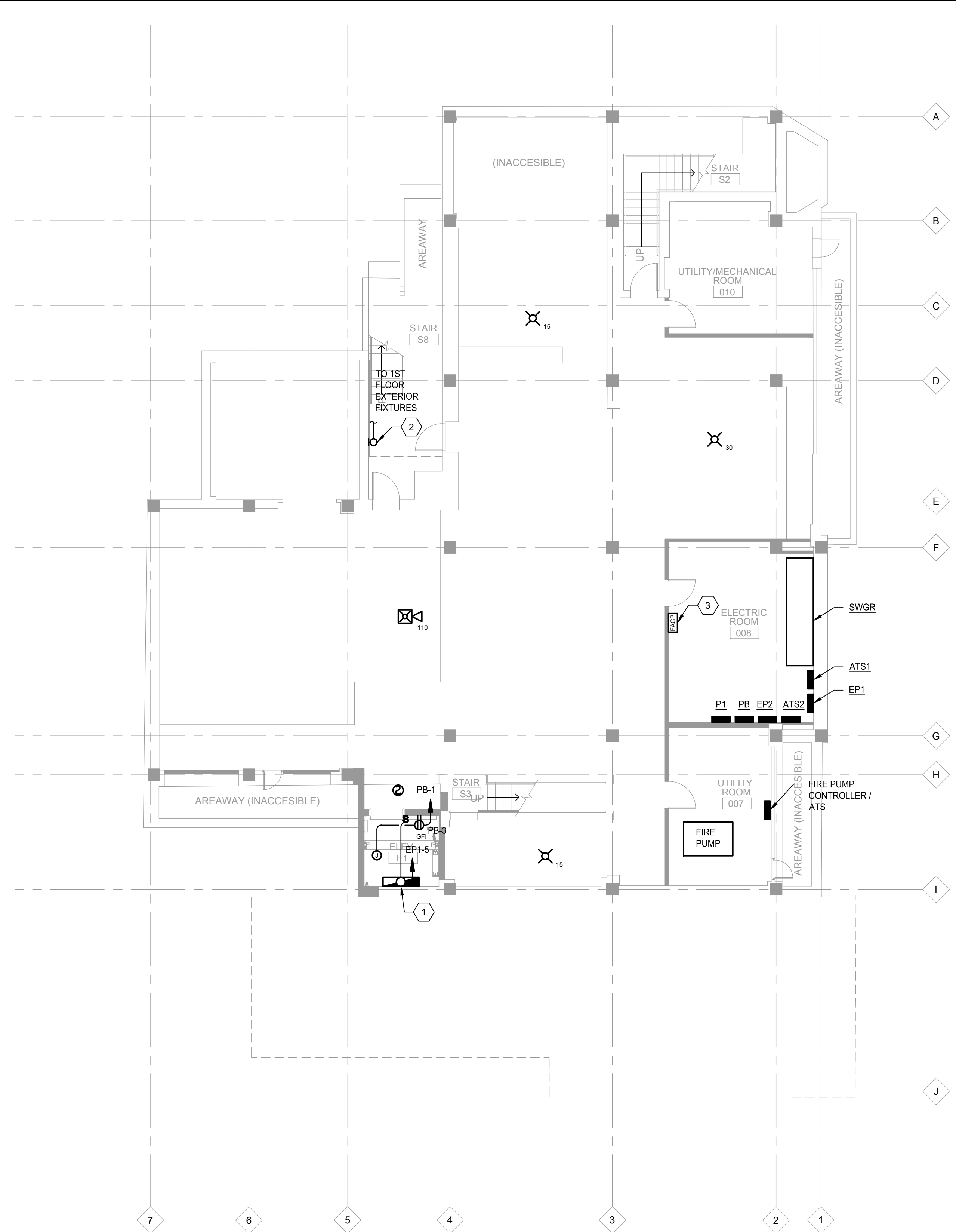
THESE DRAWINGS, SPECIFICATIONS, AND OTHER DOCUMENTS, COLLECTIVELY, THE "DOCUMENTS" INCLUDING WITHOUT LIMITATION ELECTRONIC VERSIONS THEREOF AND THE IDEAS, DESIGNS, AND ARRANGEMENTS REPRESENTED THEREBY, ARE AND SHALL REMAIN THE PROPERTY OF MARTINEZ-JOHNSON ARCHITECTURE PC, AS DEFINED BY APPLICABLE CONTRACTUAL AGREEMENTS. THE AGREEMENTS AND AS PROTECTED BY THE COPYRIGHT STATUTES OF THE UNITED STATES. USE OF THE DOCUMENTS SHALL BE STRICTLY LIMITED TO THE PROJECT FOR WHICH THEY WERE PREPARED AND DEVELOPED ("THE PROJECT") PER THE TERMS OF THE AGREEMENTS. NO PART OF THE DOCUMENTS SHALL BE COPIED, DISCLOSED TO OTHERS, OR USED IN CONNECTION WITH ANY OTHER WORK OR PROJECT, OR BY ANY OTHER PERSONS FOR ANY PURPOSES, OTHER THAN THE COMPLETION OF THE PROJECT, WITHOUT THE SPECIFIC WRITTEN AUTHORIZATION OF MARTINEZ-JOHNSON ARCHITECTURE PC. THE DOWNLOADING, COPYING, OR REPRODUCING OF ELECTRONIC VERSIONS OF THE DOCUMENTS OR VISUAL CONTACT WITH ANY PRINTED FORM THEREOF SHALL CONSTITUTE CONCLUSIVE EVIDENCE OF ACCEPTANCE OF THESE RESTRICTIONS.



| DATE: | DESCRIPTION: |
|---------|-------------------|
| 6/13/14 | ISSUED FOR PERMIT |
| 8/08/14 | FINAL REVIEW SET |
| 9/16/14 | BID SET |

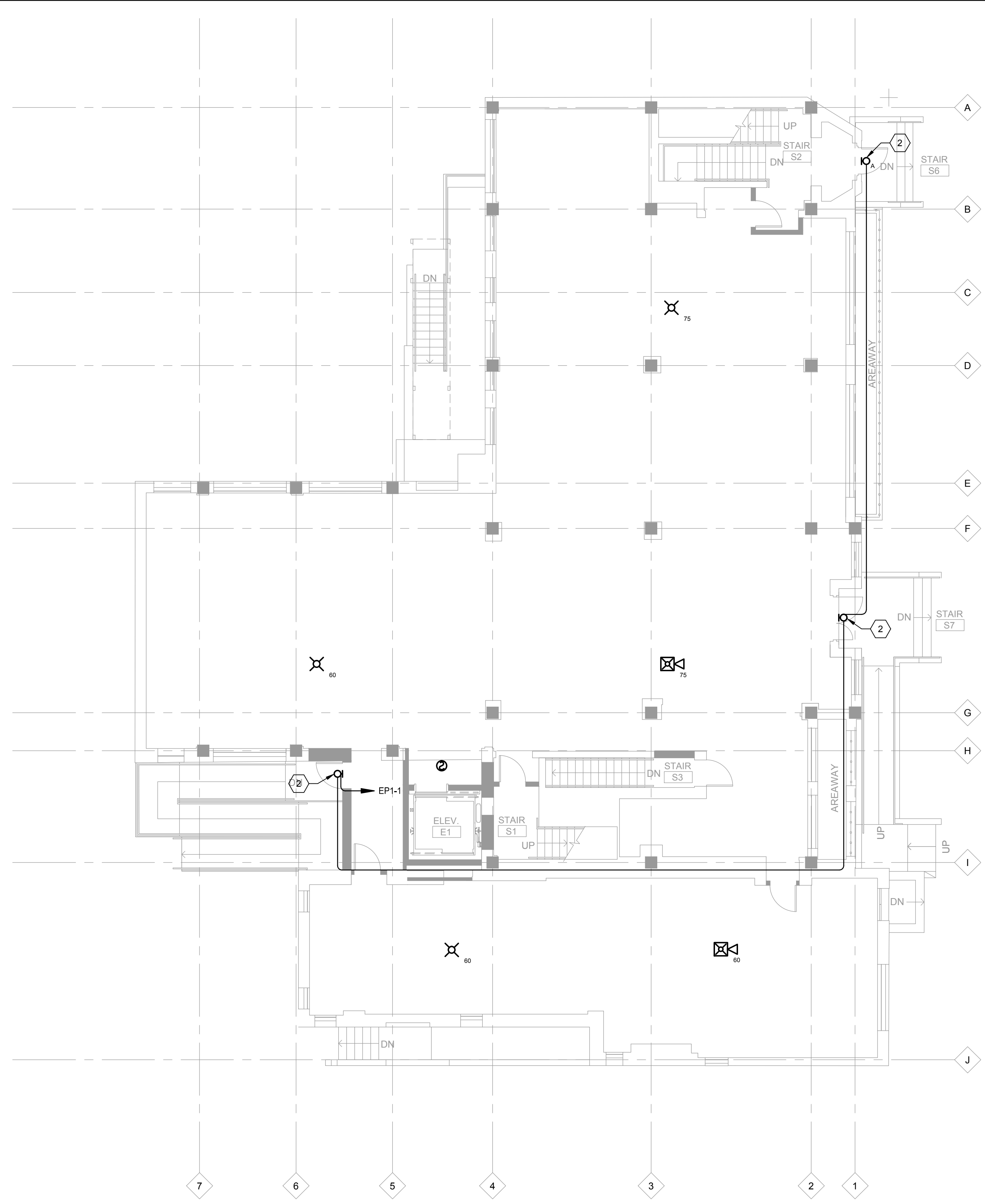
SHEET TITLE:
BASEMENT AND FIRST FLOOR ELECTRICAL PLANS

E-1.00



2 BASEMENT FLOOR ELECTRICAL PLAN
E-1.00 1/8" = 1'-0"

- KEYNOTES
- 1 PROVIDE ELEVATOR PIT LIGHT, WALL MOUNTED, WITH (2) T8 LAMPS.
- 2 PROVIDE EXTERIOR FIXTURE WITH (2) 26W CFL LAMPS.
- 3 PROVIDE FIRE ALARM CONTROL PANEL FOR ELEVATOR AND FUTURE TENANT SPACES.



1 FIRST FLOOR ELECTRICAL PLAN
E-1.00 1/8" = 1'-0"

MISSION BUILDING
RENOVATION
808 & 810 5th Street NW
Washington, DC 20001
CORE AND SHELL
M+J Project No. 7952

Client
ROCK CREEK - 810 5th, LLC
1155 Connecticut Avenue, NW
Suite 700
Washington, DC 20036
202.835.1200

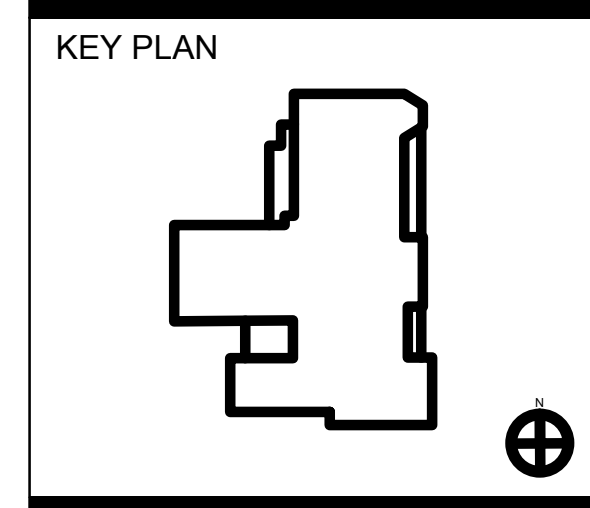
Architect
MARTINEZ+JOHNSON
ARCHITECTURE PC
1412 Eye Street NW
Washington DC 20005
202.333.4480

Structural Engineer
Structura Inc.
111 Rockville Pike
Suite 950
Rockville, MD 20850
301.987.9234

MEP Engineer
Aspire Engineering
9401 Lee Highway
Suite 410
Fairfax, VA 22031
703.539.8711

Civil Engineer
VIKA Capitol, LLC
4910 Massachusetts Ave
Suite 214
Washington, DC 20016
202.244.4140

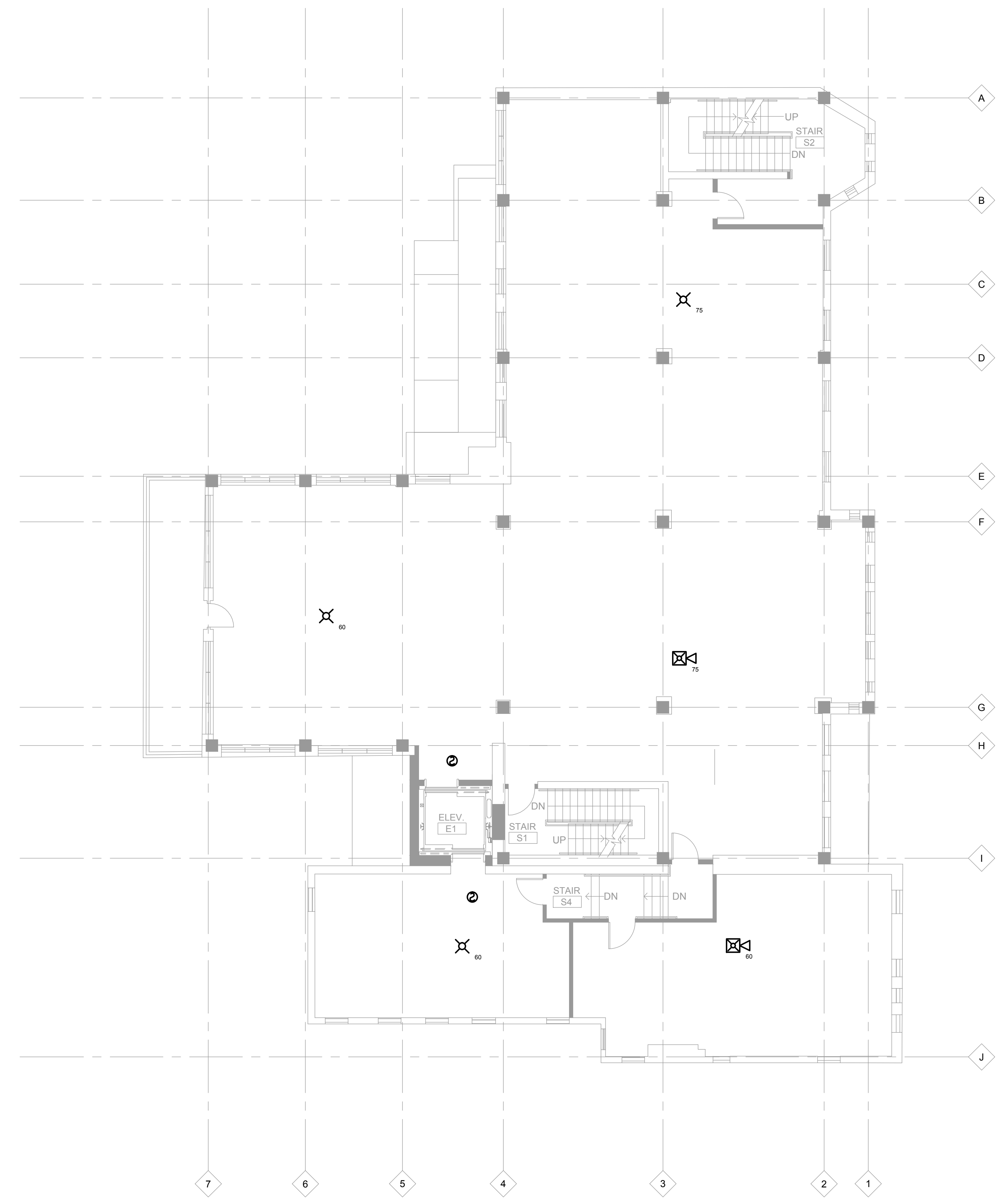
THESE DRAWINGS, SPECIFICATIONS, AND OTHER DOCUMENTS, COLLECTIVELY, THE "DOCUMENTS" INCLUDING WITHOUT LIMITATION ELECTRONIC VERSIONS THEREOF AND THE IDEAS, DESIGNS, AND ARRANGEMENTS REPRESENTED THEREBY, ARE AND SHALL REMAIN THE PROPERTY OF MARTINEZ+JOHNSON ARCHITECTURE PC, AS DEFINED BY APPLICABLE CONTRACTUAL AGREEMENTS. THE AGREEMENTS AND AS PROTECTED BY THE COPYRIGHT STATUTES OF THE UNITED STATES. USE OF THE DOCUMENTS SHALL BE STRICTLY LIMITED TO THE PROJECT FOR WHICH THEY WERE PREPARED AND DEVELOPED ("THE PROJECT") PER THE TERMS OF THE AGREEMENTS. NO PART OF THE DOCUMENTS SHALL BE COPIED, DISCLOSED TO OTHERS, OR USED IN CONNECTION WITH ANY OTHER WORK OR PROJECT, OR BY ANY OTHER PERSONS FOR ANY PURPOSES, OTHER THAN THE COMPLETION OF THE PROJECT, WITHOUT THE SPECIFIC WRITTEN AUTHORIZATION OF MARTINEZ+JOHNSON ARCHITECTURE PC. THE DOWNLOADING, COPYING, OR REPRODUCING OF ELECTRONIC VERSIONS OF THE DOCUMENTS OR VISUAL CONTACT WITH ANY PRINTED FORM THEREOF SHALL CONSTITUTE CONCLUSIVE EVIDENCE OF ACCEPTANCE OF THESE RESTRICTIONS.



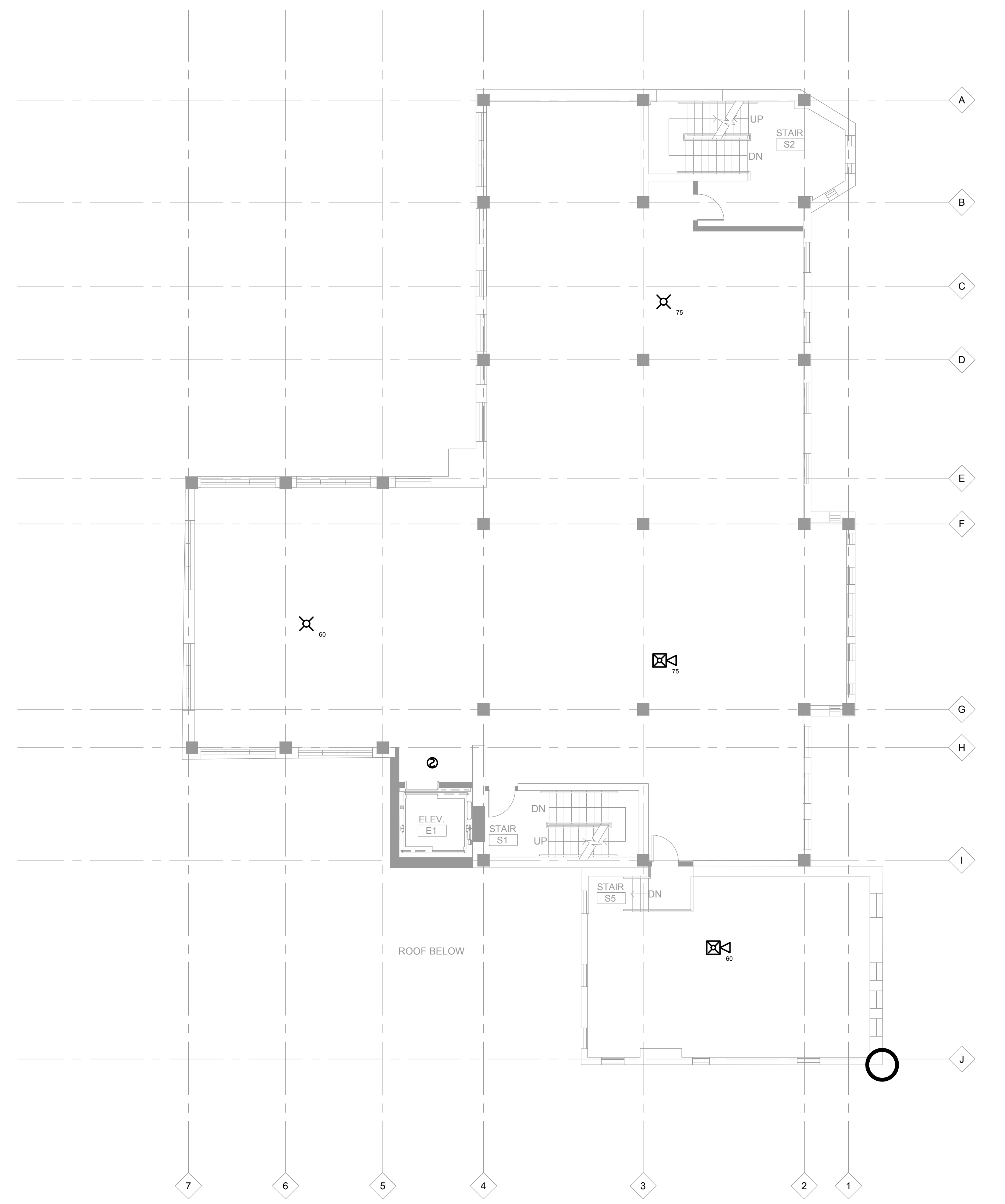
| DATE: | DESCRIPTION: |
|---------|-------------------|
| 6/13/14 | ISSUED FOR PERMIT |
| 8/08/14 | FINAL REVIEW SET |
| 9/16/14 | BID SET |
| | |
| | |
| | |
| | |
| | |
| | |
| | |

SHEET TITLE:
SECOND AND THIRD FLOOR ELECTRICAL PLANS

E-1.01



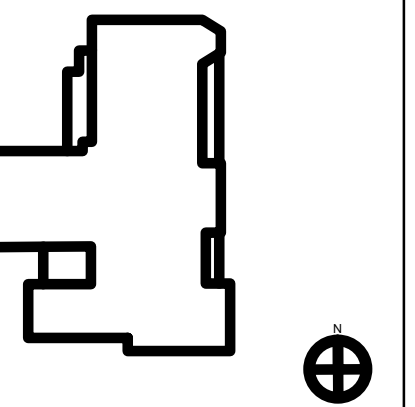
2 SECOND FLOOR ELECTRICAL PLAN
E-1.01 1/8"= 1'-0"



1 THIRD FLOOR ELECTRICAL PLAN
E-1.01 1/8"= 1'-0"

THESE DRAWINGS, SPECIFICATIONS, AND OTHER DOCUMENTS, COLLECTIVELY, THE "DOCUMENTS" INCLUDING WITHOUT LIMITATION ELECTRONIC VERSIONS THEREOF AND THE IDEAS, DESIGNS, AND ARRANGEMENTS REPRESENTED THEREBY, ARE AND SHALL REMAIN THE PROPERTY OF MARTINEZ+JOHNSON ARCHITECTURE PC, AS DEFINED BY APPLICABLE CONTRACTUAL AGREEMENTS (THE "AGREEMENTS") AND AS PROTECTED BY THE COPYRIGHT STATUTES OF THE UNITED STATES. USE OF THE DOCUMENTS SHALL BE STRICTLY LIMITED TO THE PROJECT FOR WHICH THEY WERE PREPARED AND DEVELOPED ("THE PROJECT") PER THE TERMS OF THE AGREEMENTS. NO PART OF THE DOCUMENTS SHALL BE COPIED, DISCLOSED TO OTHERS, OR USED IN CONNECTION WITH ANY OTHER WORK OR PROJECT, OR BY ANY OTHER PERSONS FOR ANY PURPOSES OTHER THAN THE COMPLETION OF THE PROJECT, WITHOUT THE SPECIFIC WRITTEN AUTHORIZATION OF MARTINEZ+JOHNSON ARCHITECTURE PC. THE DOWNLOADING, COPYING, OR REPRODUCTION OF ELECTRONIC VERSIONS OF THE DOCUMENTS OR VISUAL CONTACT WITH ANY PRINTED FORM THEREOF SHALL CONSTITUTE CONCLUSIVE EVIDENCE OF ACCEPTANCE OF THESE RESTRICTIONS.

KEY PLAN

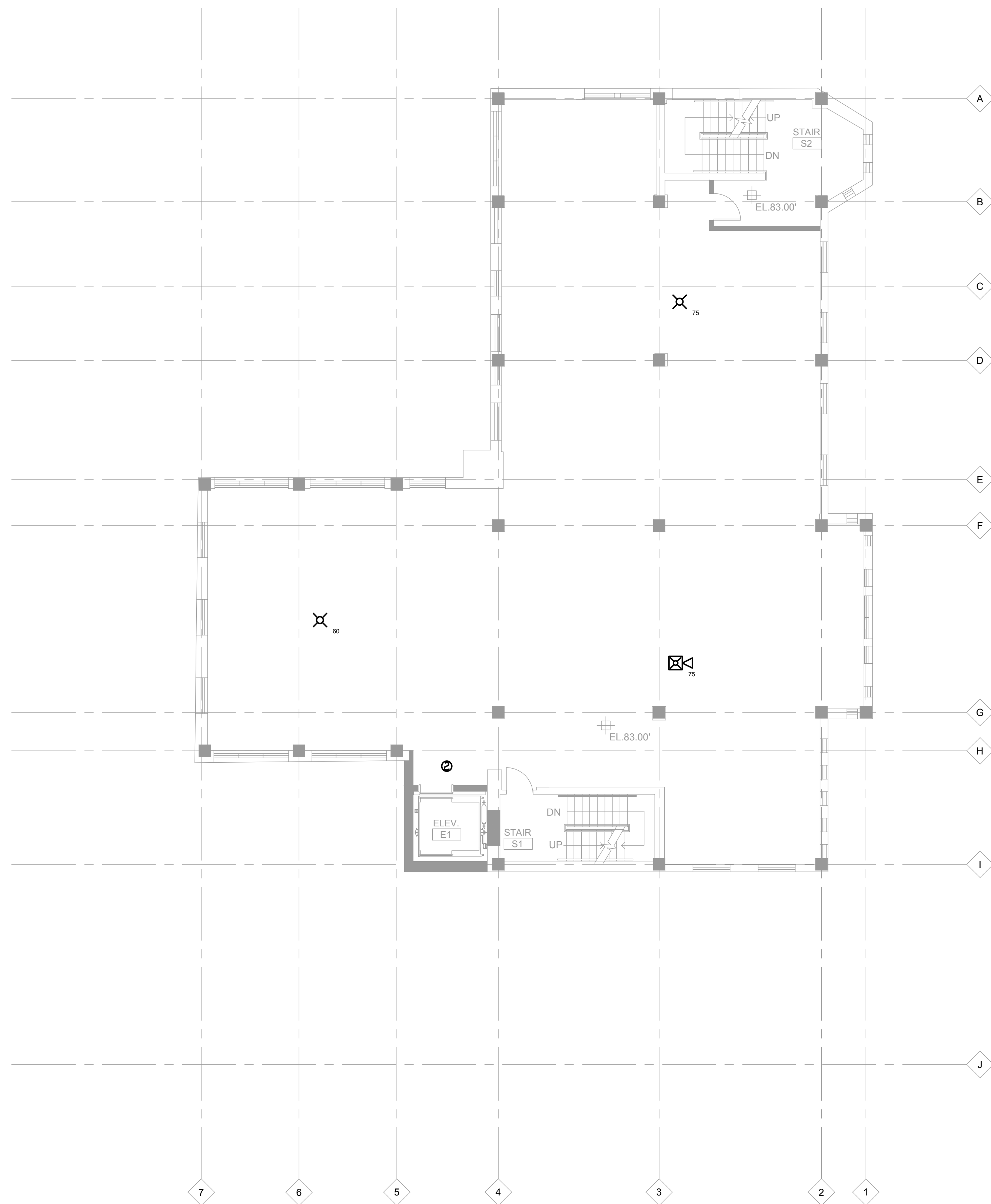


| DATE: | DESCRIPTION: |
|---------|-------------------|
| 6/13/14 | ISSUED FOR PERMIT |
| 8/08/14 | FINAL REVIEW SET |
| 9/16/14 | BID SET |
| | |
| | |
| | |
| | |
| | |
| | |
| | |

SHEET TITLE:

FOURTH AND FIFTH FLOOR ELECTRICAL PLANS

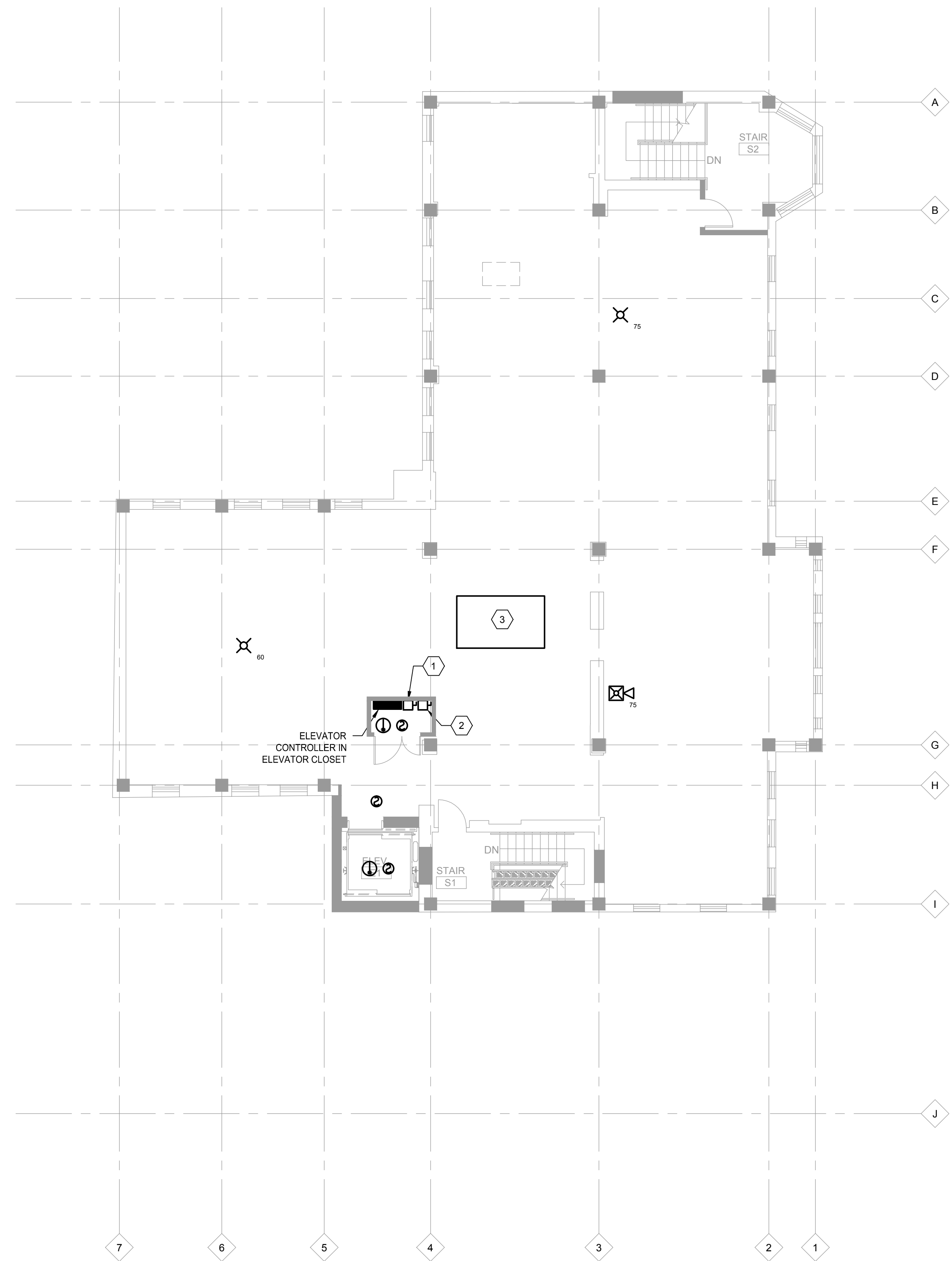
E-1.02



2 FOURTH FLOOR ELECTRICAL PLAN
E-1.02 1/8" = 1'-0"

KEYNOTES

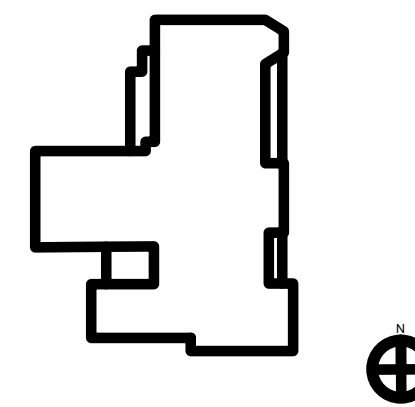
- 1 PROVIDE 208V 3PH 60A DISCONNECT FOR ELEVATOR CONTROLLER FED FROM EP2. SEE SCHEDULE ON SHEET E3.02.
- 2 PROVIDE 120V 1PH 20A DISCONNECT FOR ELEVATOR CAB LIGHTS FED FROM EP1. SEE SCHEDULE ON SHEET E3.02.
- 3 GENERATOR LOCATED ON ROOF. SEE RISER ON SHEET E3.01.



1 FIFTH FLOOR ELECTRICAL PLAN
E-1.02 1/8" = 1'-0"

THESE DRAWINGS, SPECIFICATIONS, AND OTHER DOCUMENTS, (COLLECTIVELY, THE "DOCUMENTS") INCLUDING WITHOUT LIMITATION ELECTRONIC VERSIONS THEREOF AND THE IDEAS, DESIGNS, AND ARRANGEMENTS REPRESENTED THEREBY, ARE AND SHALL REMAIN THE PROPERTY OF MARTINEZ-JOHNSON ARCHITECTURE PC, AS DEFINED BY APPLICABLE CONTRACTUAL AGREEMENTS (THE "AGREEMENTS") AND AS PROTECTED BY THE COPYRIGHT STATUTES OF THE UNITED STATES. USE OF THE DOCUMENTS SHALL BE STRICTLY LIMITED TO THE PROJECT FOR WHICH THEY WERE PREPARED AND DEVELOPED ("THE PROJECT") PER THE TERMS OF THE AGREEMENTS. NO PART OF THE DOCUMENTS SHALL BE COPIED, DISCLOSED TO OTHERS, OR USED IN CONNECTION WITH ANY OTHER WORK OR PROJECT, OR BY ANY OTHER PERSONS FOR ANY PURPOSES OTHER THAN THE COMPLETION OF THE PROJECT, WITHOUT THE SPECIFIC WRITTEN AUTHORIZATION OF MARTINEZ-JOHNSON ARCHITECTURE PC. THE DOWNLOADING, COPYING, OR REPRODUCING OF ELECTRONIC VERSIONS OF THE DOCUMENTS OR VISUAL CONTACT WITH ANY PRINTED FORM THEREOF SHALL CONSTITUTE CONCLUSIVE EVIDENCE OF ACCEPTANCE OF THESE RESTRICTIONS.

KEY PLAN

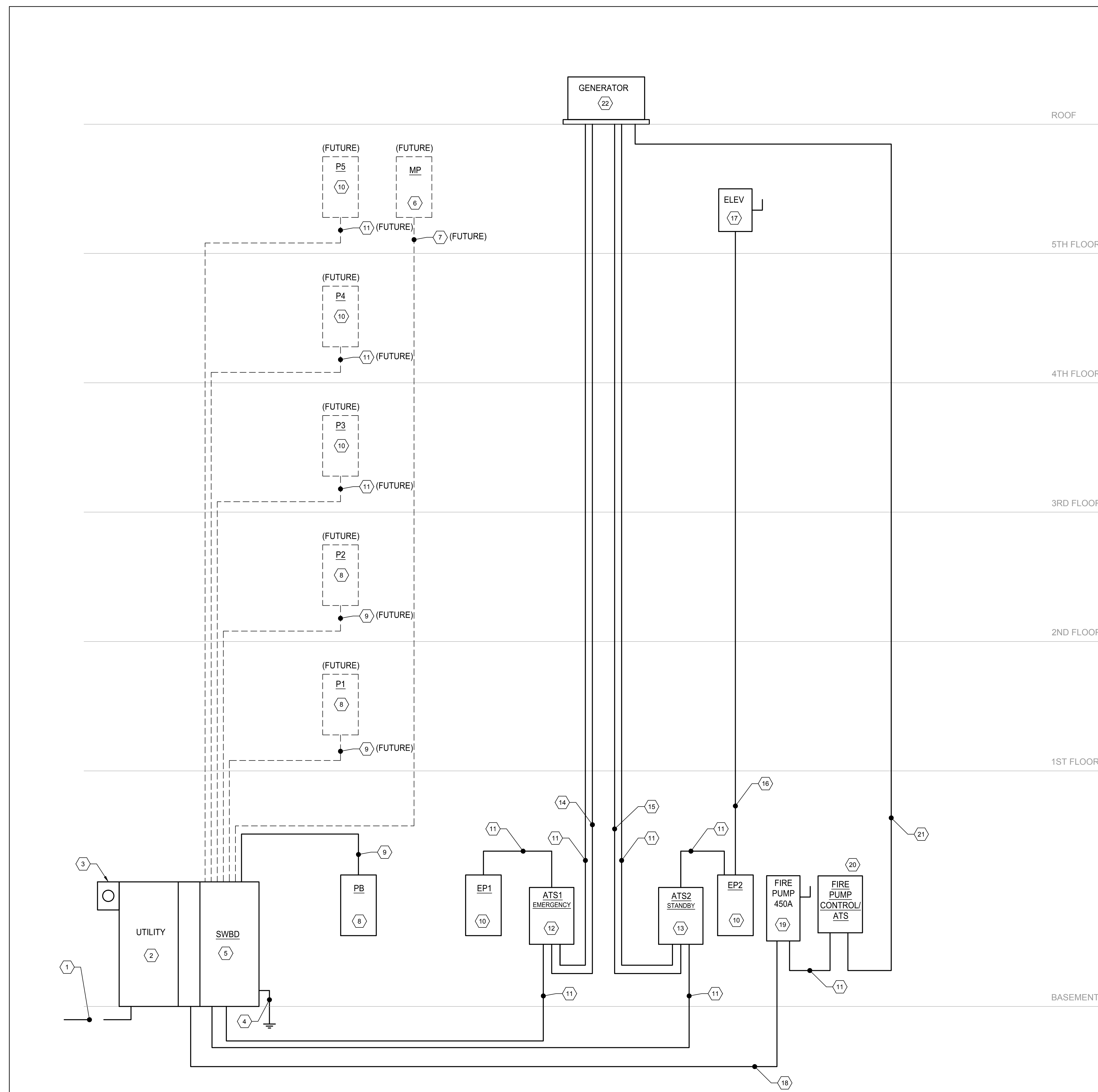


| DATE: | DESCRIPTION: |
|---------|-------------------|
| 6/13/14 | ISSUED FOR PERMIT |
| 8/08/14 | FINAL REVIEW SET |
| 9/16/14 | BID SET |

SHEET TITLE:

ELECTRICAL RISER

E-3.01



- 1 POWER COMPANY INCOMING SERVICE FEEDERS IN EXISTING DUCT BANK. COORDINATE WITH POWER COMPANY.
- 2 PROVIDE 3PH 4W 208V 1200A MAIN SWITCHBOARD WITH UTILITY SECTION AND 1200A MAIN DISCONNECT.
- 3 POWER COMPANY METER
- 4 PROVIDE 3/0 IN 1" CU MAIN SERVICE GROUND.
- 5 PROVIDE 1200A 208V 3P 3PH 4W MAIN DISTRIBUTION SECTION WITH 1200A 3PH 4W 208V MAIN DISCONNECT.
- 6 PROVIDE 400A 120/208V PANEL.
- 7 PROVIDE 2 SETS OF (4 #3/0, 1 #3G IN 2 1/2" C).
- 8 PROVIDE 225A 120/208V PANEL.
- 9 PROVIDE 4 #4/0, 1#4G IN 3" C.
- 10 PROVIDE 100A 120/208V PANEL.
- 11 PROVIDE 4 #1, 1#8G IN 2" C.
- 12 PROVIDE 100A 208V 3P ATS SWITCH FOR EMERGENCY LOADS. ATS SHALL BE LISTED FOR EMERGENCY SYSTEM USE.
- 13 PROVIDE 100A 208V 3P ATS SWITCH FOR STANDBY LOADS.
- 14 PROVIDE EMPTY 2" CONDUIT FOR CONTROL WIRING.
- 15 PROVIDE 2" CONDUIT FOR GENERATOR BATTERY CHARGER AND HEATER WIRING. COORDINATE WITH MANUFACTURER'S REQUIREMENTS.
- 16 PROVIDE 4 #4, 1 #8G IN 1" CONDUIT.
- 17 PROVIDE 3PH 208V 50A DISCONNECT FOR ELEVATOR CONTROLLER.
- 18 TAP AHEAD OF MAIN. PROVIDE 4 #1, 1 #8G IN 2" C.
- 19 PROVIDE 208V 3PH 450A DISCONNECT.
- 20 FIRE PUMP CONTROLLER WITH ATS / SOLID STATE STARTER / DISCONNECT.
- 21 PROVIDE 4 #1, 1 #8G IN 2" C ENCASED IN 2" CONCRETE.
- 22 PROVIDE 120/208V 80KW NATURAL GAS POWERED GENERATOR WITH THREE BUILT-IN CIRCUIT BREAKERS. PROVIDE GENERATOR PAD PER MANUFACTURER'S RECOMMENDATIONS.

