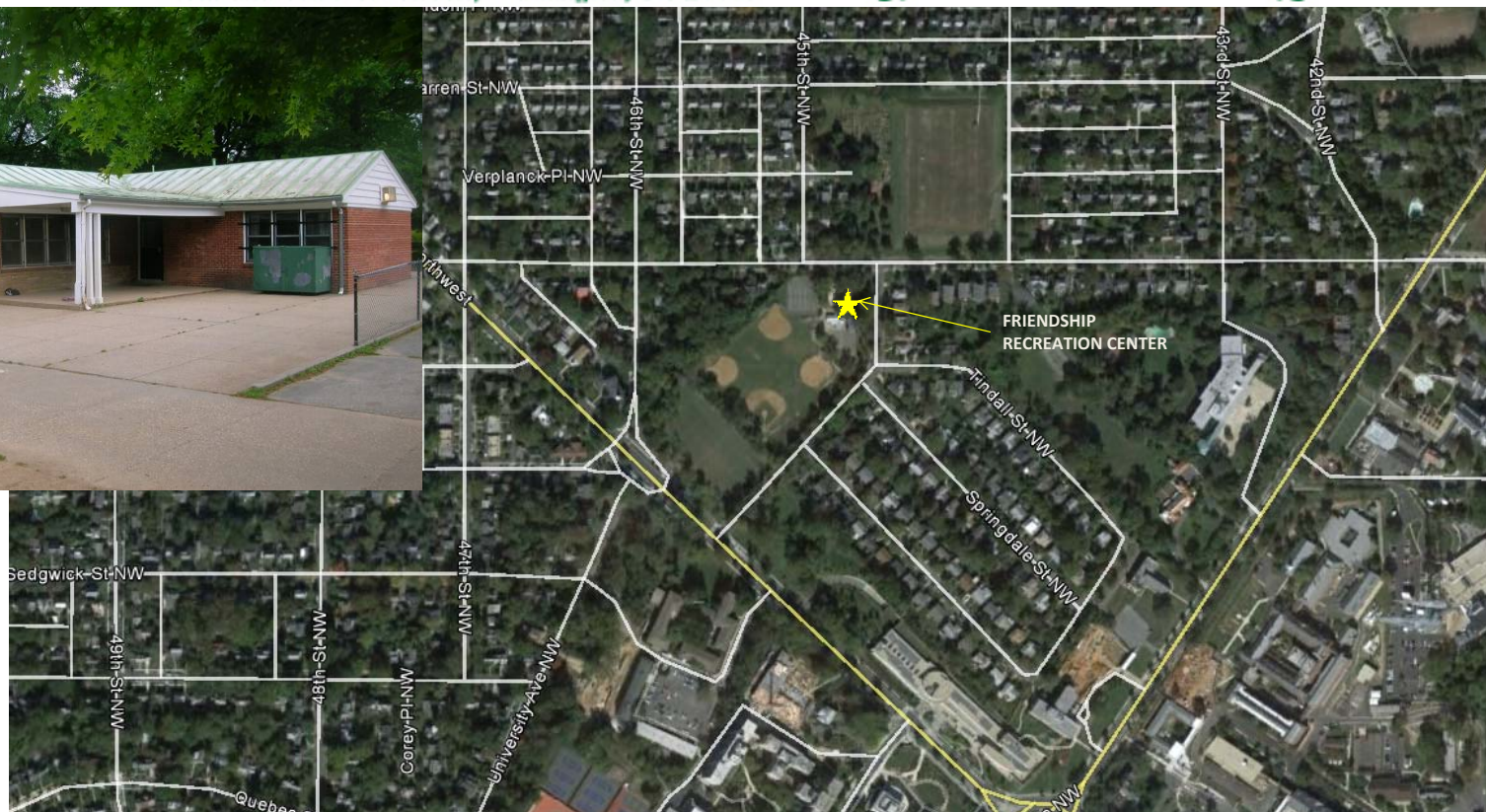
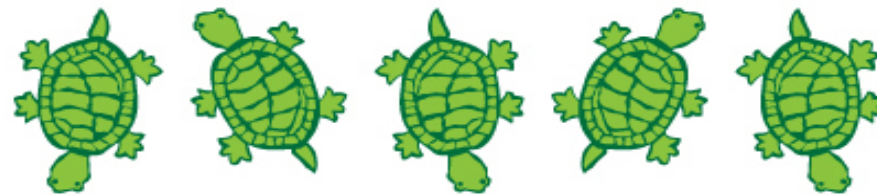


# Turtle Park

45th and Van Ness Streets, Washington, DC 20016



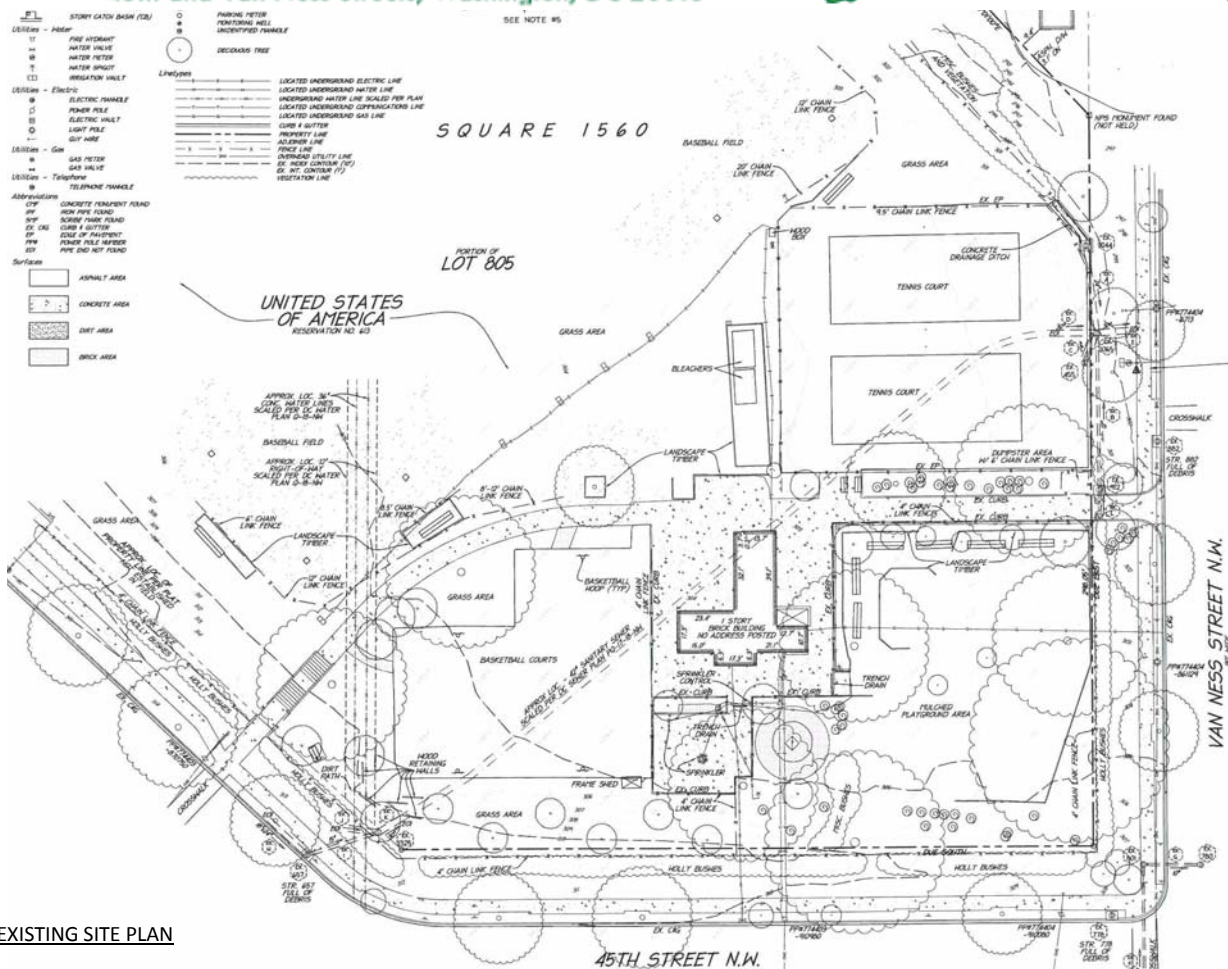
FANNING HOWEY



TOMPKINS  
BUILDERS, INC.



45th and Van Ness Streets, Washington, DC 20016



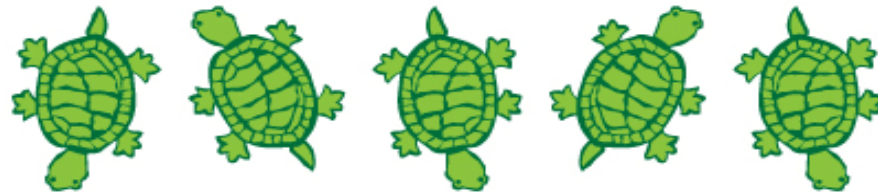
## EXISTING SITE PLAN



**TOMPKINS**  
BUILDERS, INC.

# Turtle Park

45th and Van Ness Streets, Washington, DC 20016



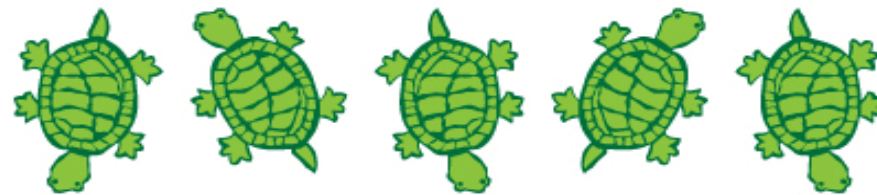
FANNING HOWEY



TOMPKINS  
BUILDERS, INC.

# Turtle Park

45th and Van Ness Streets, Washington, DC 20016



## ROOM LEGEND

BOYS TOILET	KIDS/CRAFT ROOM	WARM KITCHEN
COMMUNITY GALLERY	LOBBY	MECHANICAL AND ELECTRICAL ROOM
COMMUNITY ROOM	OFFICE	FLEXIBLE TECH SPACE
CORRIDOR	OUTDOOR STORAGE	
GIRL'S TOILET	STORAGE	
JANITOR	TOILET	

ROOM LEGEND - FIRST FLOOR			
ROOM NO.	OWNER	ROOM NAME	AREA (SF)
A100		KIDS/CRAFT ROOM	360 SF
A101		STORAGE	52 SF
A102		TOILET	52 SF
A103		WARM KITCHEN	128 SF
A104		STORAGE	84 SF
A105		OFFICE	68 SF
A106		OUTDOOR STORAGE	68 SF
A107		STORAGE	68 SF
A108		FLEXIBLE TECH SPACE	68 SF
A109		MECHANICAL AND ELECTRICAL ROOM	211 SF
A110		STORAGE	64 SF
A111		COMMUNITY ROOM	1410 SF
A112		JANITOR	41 SF
A113		STORAGE	52 SF
A114		LOBBY	160 SF
A115		COMMUNITY GALLERY	146 SF
A116		GIRL'S TOILET	52 SF
A117		BOYS TOILET	52 SF
A118		CORRIDOR	84 SF



1 FIRST FLOOR ARCHITECTURAL PLAN  
SCALE: 1/8" = 1'-0"

FANNING HOWEY

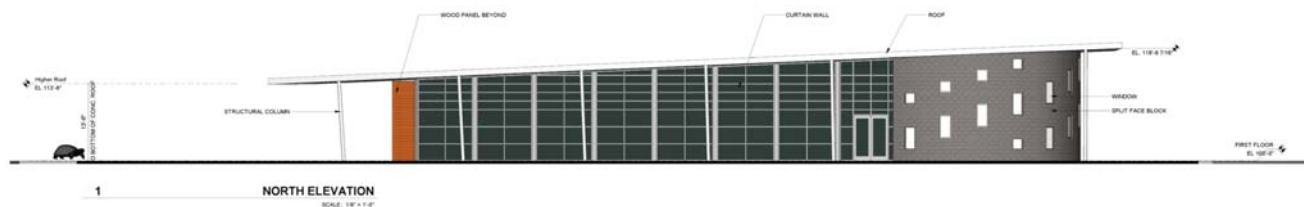
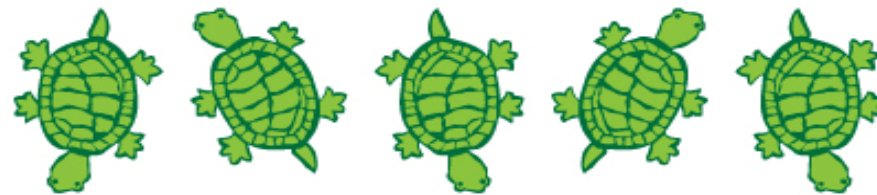


TOMPKINS  
BUILDERS, INC.



# Turtle Park

45th and Van Ness Streets, Washington, DC 20016



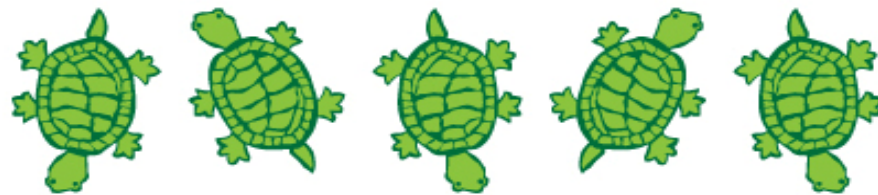
FANNING HOWEY



TOMPKINS  
BUILDERS, INC.

# Turtle Park

45th and Van Ness Streets, Washington, DC 20016



FANNING HOWEY

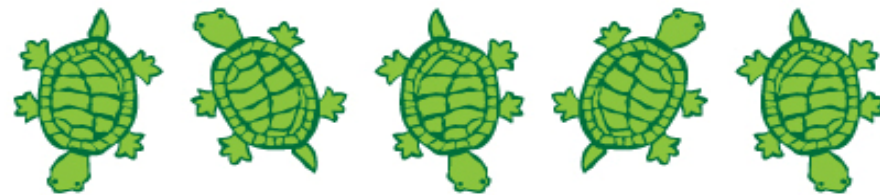


TOMPKINS  
BUILDERS, INC.



# Turtle Park

45th and Van Ness Streets, Washington, DC 20016



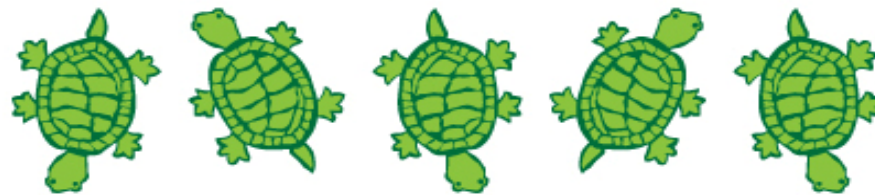
FANNING HOWEY



**TOMPKINS**  
BUILDERS, INC.

# Turtle Park

45th and Van Ness Streets, Washington, DC 20016



## DECEMBER 2014 ONLINE SURVEY RESULTS

110 respondents logged in

### - Key things residents want to see in the new play space:

- Equipment for older kids (5-12 years old)
- A natural feel, some bright colors OK
- Updated splash pad
- New/updated bathrooms
- Keep the turtles!

### - Top five favorite activities residents would like to see in new space:

1. Interact with water
2. Swing
3. Play on a sport court
4. Play in sand
5. Have a picnic

FANNING HOWEY



TOMPKINS  
BUILDERS, INC.



# Turtle Park

45th and Van Ness Streets, Washington, DC 20016



## NEXT STEPS

- Permitting
- Phase 1 Archaeological Study
- Phase Environmental Study
- Site Demolition / Sanitary Line Relocation
- Building Demolition / Construction
- Substantial Completion: Late Spring 2016

FANNING HOWEY



**TOMPKINS**  
BUILDERS, INC.