

Homogeneous Area ID	Material	Material Color	Material Description	Floor	Room	Quantity	Units	Field Notes
Dix Building-10	Caulking, Window	Gray	Gray window caulking	6	645	160	LF	N/A
Dix Building-16	Floor tile with mastic (12"x12")	Off white	Off white 12"x12" with streaks	6	645	150	SF	N/A
Dix Building-10	Caulking, Window	Gray	Gray window caulking	6	605B	80	LF	N/A
Dix Building-19	Pipe Insulation	White	4"D -6"D pipe insulation	6	605B	10	LF	With 3 fittings
Dix Building-10	Caulking, Window	Gray	Gray window caulking	6	608A	40	LF	N/A
Dix Building-02	Floor tile with mastic (9"x9")	Tan	Tan 9"x9" with streaks	6	608B	12	SF	N/A
Dix Building-06	Glue Dots	Dark brown	Glue dots under 1'x1' ceiling tiles	6	608C	90	SF	Mostly scattered on the floor
Dix Building-10	Caulking, Window	Gray	Gray window caulking	6	608C	20	LF	N/A
Dix Building-06	Glue Dots	Dark brown	Glue dots under 1'x1' ceiling tiles	6	608D	20	SF	Mostly scattered on the floor
Dix Building-10	Caulking, Window	Gray	Gray window caulking	6	608D	20	LF	N/A
Dix Building-19	Pipe Insulation	White	4"D -6"D pipe insulation	6	608D	12	LF	Above the Ceiling
Dix Building-10	Caulking, Window	Gray	Gray window caulking	6	611A	20	LF	N/A
Dix Building-10	Caulking, Window	Gray	Gray window caulking	6	611B	20	LF	N/A
Dix Building-06	Glue Dots	Dark brown	Glue dots under 1'x1' ceiling tiles	6	611C	20	SF	Mostly scattered on the floor
Dix Building-10	Caulking, Window	Gray	Gray window caulking	6	611C	20	LF	N/A
Dix Building-06	Glue Dots	Dark brown	Glue dots under 1'x1' ceiling tiles	6	611D	20	SF	Mostly scattered on the floor
Dix Building-10	Caulking, Window	Gray	Gray window caulking	6	611D	20	LF	N/A
Dix Building-19	Pipe Insulation	White	4"D -6"D pipe insulation	6	611D	12	LF	Above the Ceiling
Dix Building-06	Glue Dots	Dark brown	Glue dots under 1'x1' ceiling tiles	6	638C	120	SF	Mostly scattered on the floor
Dix Building-10	Caulking, Window	Gray	Gray window caulking	6	638C	20	LF	N/A
Dix Building-06	Glue Dots	Dark brown	Glue dots under 1'x1' ceiling tiles	6	638D	120	SF	Mostly scattered on the floor
Dix Building-10	Caulking, Window	Gray	Gray window caulking	6	638D	20	LF	N/A
Dix Building-10	Caulking, Window	Gray	Gray window caulking	6	639B	40	LF	N/A
Dix Building-15	Corrugated paper	Off white	Corrugated paper in the pipe chase	6	639B	4	SF	Mostly scattered on the floor
Dix Building-06	Glue Dots	Dark brown	Glue dots under 1'x1' ceiling tiles	6	639C	100	SF	Mostly scattered on the floor
Dix Building-06	Glue Dots	Dark brown	Glue dots under 1'x1' ceiling tiles	6	639D	100	SF	Mostly scattered on the floor
Dix Building-10	Caulking, Window	Gray	Gray window caulking	6	639D	20	LF	N/A
Dix Building-10	Caulking, Window	Gray	Gray window caulking	6	693A	20	LF	N/A
Dix Building-02	Floor tile with mastic (9"x9")	Tan	Tan 9"x9" with streaks	6	Center hallway Section 1	380	SF	N/A
Dix Building-06	Glue Dots	Dark brown	Glue dots under 1'x1' ceiling tiles	6	Center hallway Section 1	380	SF	Mostly scattered on the floor
Dix Building-02	Floor tile with mastic (9"x9")	Tan	Tan 9"x9" with streaks	6	Center hallway Section 2	190	SF	N/A
Dix Building-06	Glue Dots	Dark brown	Glue dots under 1'x1' ceiling tiles	6	Center hallway Section 2	190	SF	Mostly scattered on the floor
Dix Building-02	Floor tile with mastic (9"x9")	Tan	Tan 9"x9" with streaks	6	Center hallway Section 3	190	SF	N/A
Dix Building-06	Glue Dots	Dark brown	Glue dots under 1'x1' ceiling tiles	6	Center hallway Section 3	190	SF	Mostly scattered on the floor
Dix Building-02	Floor tile with mastic (9"x9")	Tan	Tan 9"x9" with streaks	6	Center hallway Section 4	460	SF	N/A
Dix Building-06	Glue Dots	Dark brown	Glue dots under 1'x1' ceiling tiles	6	Center hallway Section 4	460	SF	Mostly scattered on the floor
Dix Building-06	Glue Dots	Dark brown	Glue dots under 1'x1' ceiling tiles	6	Elevator lobby 1	460	SF	Mostly scattered on the floor

Homogeneous Area ID	Material	Material Color	Material Description	Floor	Room	Quantity	Units	Field Notes
Dix Building-10	Caulking, Window	Gray	Gray window caulking	6	Elevator lobby 1	80	LF	N/A
Dix Building-06	Glue Dots	Dark brown	Glue dots under 1'x1' ceiling tiles	6	Elevator lobby 2	450	SF	Mostly scattered on the floor
Dix Building-10	Caulking, Window	Gray	Gray window caulking	6	Elevator lobby 2	80	LF	N/A
Dix Building-29	Duct Insulation	White	1.5'x8" White Duct insulation	6	Hallways	780	LF	Mostly gone(Estimated)
Dix Building-02	Floor tile with mastic (9"x9")	Tan	Tan 9"x9" with streaks	6	North hallway	500	SF	N/A
Dix Building-06	Glue Dots	Dark brown	Glue dots under 1'x1' ceiling tiles	6	North hallway	500	SF	Mostly scattered on the floor
Dix Building-02	Floor tile with mastic (9"x9")	Tan	Tan 9"x9" with streaks	6	Northwest hallway	400	SF	N/A
Dix Building-06	Glue Dots	Dark brown	Glue dots under 1'x1' ceiling tiles	6	Northwest hallway	400	SF	Mostly scattered on the floor
Dix Building-02	Floor tile with mastic (9"x9")	Tan	Tan 9"x9" with streaks	6	South hallway	360	SF	N/A
Dix Building-06	Glue Dots	Dark brown	Glue dots under 1'x1' ceiling tiles	6	South hallway	360	SF	Mostly scattered on the floor
Dix Building-15	Corrugated paper	Off white	Corrugated paper in the pipe chase	6	Southeast stairs	4	SF	Mostly scattered on the floor
Dix Building-02	Floor tile with mastic (9"x9")	Tan	Tan 9"x9" with streaks	6	Southwest hallway	400	SF	N/A
Dix Building-06	Glue Dots	Dark brown	Glue dots under 1'x1' ceiling tiles	6	Southwest hallway	400	SF	Mostly scattered on the floor
Dix Building-38	Debris	Multiple	Debris on the floor	6	Various Locations	900	SF	N/A
Dix Building-19	Pipe Insulation	White	4"D-6"D pipe insulation	7	Elevator Mechanical Room	50	LF	N/A
Dix Building-24	Pipe Fittings	White	4"D-6"D pipe fittings	7	Elevator Mechanical Room	20	Each	N/A
Dix Building-10	Caulking, Window	Gray	Gray window caulking	7	North mechanical room	140	LF	N/A
Dix Building-19	Pipe Insulation	White	4"D-6"D pipe insulation	7	North mechanical room	1000	LF	N/A
Dix Building-20	Pipe Insulation	White	12"D-15"D pipe insulation	7	North mechanical room	1000	LF	N/A
Dix Building-21	Pipe Insulation	White	2"D-4"D pipe insulation	7	North mechanical room	300	LF	N/A
Dix Building-23	Duct Insulation	White	White duct insulation(AHU)	7	North mechanical room	2000	SF	N/A
Dix Building-24	Pipe Fittings	White	4"D-6"D pipe fittings	7	North mechanical room	40	Each	N/A
Dix Building-25	Pipe Fittings	White	12"D-15"D pipe fittings	7	North mechanical room	25	Each	N/A
Dix Building-26	Pipe Fittings	White	2"D-4"D pipe fittings	7	North mechanical room	100	Each	N/A
Dix Building-36	Debris	Multiple	Debris	7	North mechanical room	25	SF	N/A
Dix Building-41	Caulking, Door	Gray	Gray door caulking from outside	7	North mechanical room	2	Each	Going to roof
Dix Building-10	Caulking, Window	Gray	Gray window caulking	7	South mechanical room	140	LF	N/A
Dix Building-19	Pipe Insulation	White	4"D-6"D pipe insulation	7	South mechanical room	1000	LF	N/A
Dix Building-20	Pipe Insulation	White	12"D-15"D pipe insulation	7	South mechanical room	1000	LF	N/A
Dix Building-21	Pipe Insulation	White	2"D-4"D pipe insulation	7	South mechanical room	300	LF	N/A
Dix Building-23	Duct Insulation	White	White duct insulation(AHU)	7	South mechanical room	2200	SF	N/A
Dix Building-24	Pipe Fittings	White	4"D-6"D pipe fittings	7	South mechanical room	80	Each	N/A
Dix Building-25	Pipe Fittings	White	12"D-15"D pipe fittings	7	South mechanical room	25	Each	N/A
Dix Building-26	Pipe Fittings	White	2"D-4"D pipe fittings	7	South mechanical room	120	Each	N/A
Dix Building-36	Debris	Multiple	Debris	7	South mechanical room	10	SF	N/A
Dix Building-36	Debris	Multiple	Debris	7	South mechanical room	50	SF	N/A
Dix Building-41	Caulking, Door	Gray	Gray door caulking from outside	7	South mechanical room	2	Each	Going to roof

Homogeneous Area ID	Material	Material Color	Material Description	Floor	Room	Quantity	Units	Field Notes
Dix Building-10	Caulking, Window	Gray	Gray window caulking	B1	B100	160	LF	N/A
Dix Building-16	Floor tile with mastic (12"x12")	Off white	Off white 12"x12" with streaks	B1	B100	730	SF	N/A
Dix Building-10	Caulking, Window	Gray	Gray window caulking	B1	B101	40	LF	N/A
Dix Building-16	Floor tile with mastic (12"x12")	Off white	Off white 12"x12" with streaks	B1	B101	120	SF	N/A
Dix Building-16	Floor tile with mastic (12"x12")	Off white	Off white 12"x12" with streaks	B1	B102 hallway	210	SF	N/A
Dix Building-10	Caulking, Window	Gray	Gray window caulking	B1	B102A	20	LF	N/A
Dix Building-10	Caulking, Window	Gray	Gray window caulking	B1	B102B	20	LF	N/A
Dix Building-10	Caulking, Window	Gray	Gray window caulking	B1	B102C	20	LF	N/A
Dix Building-10	Caulking, Window	Gray	Gray window caulking	B1	B102D	20	LF	N/A
Dix Building-16	Floor tile with mastic (12"x12")	Off white	Off white 12"x12" with streaks	B1	B102D	100	SF	N/A
Dix Building-10	Caulking, Window	Gray	Gray window caulking	B1	B102E	20	LF	N/A
Dix Building-16	Floor tile with mastic (12"x12")	Off white	Off white 12"x12" with streaks	B1	B102E	100	SF	N/A
Dix Building-10	Caulking, Window	Gray	Gray window caulking	B1	B103	120	LF	N/A
Dix Building-16	Floor tile with mastic (12"x12")	Off white	Off white 12"x12" with streaks	B1	B103	120	SF	N/A
Dix Building-02	Floor tile with mastic (9"x9")	Tan	Tan 9"x9" with streaks	B1	B104	200	SF	N/A
Dix Building-10	Caulking, Window	Gray	Gray window caulking	B1	B104	40	LF	N/A
Dix Building-10	Caulking, Window	Gray	Gray window caulking	B1	B105	20	LF	N/A
Dix Building-16	Floor tile with mastic (12"x12")	Off white	Off white 12"x12" with streaks	B1	B105	120	SF	N/A
Dix Building-10	Caulking, Window	Gray	Gray window caulking	B1	B106	140	LF	N/A
Dix Building-02	Floor tile with mastic (9"x9")	Tan	Tan 9"x9" with streaks	B1	B106 Hallway	160	SF	N/A
Dix Building-02	Floor tile with mastic (9"x9")	Tan	Tan 9"x9" with streaks	B1	B106B	900	SF	N/A
Dix Building-15	Corrugated paper	Off white	Corrugated paper in the pipe chase	B1	B106B	100	SF	Mostly scattered on the floor
Dix Building-10	Caulking, Window	Gray	Gray window caulking	B1	B106C	140	LF	N/A
Dix Building-10	Caulking, Window	Gray	Gray window caulking	B1	B106E	20	LF	N/A
Dix Building-02	Floor tile with mastic (9"x9")	Tan	Tan 9"x9" with streaks	B1	B106G	40	SF	N/A
Dix Building-02	Floor tile with mastic (9"x9")	Tan	Tan 9"x9" with streaks	B1	B108A	120	SF	N/A
Dix Building-02	Floor tile with mastic (9"x9")	Tan	Tan 9"x9" with streaks	B1	B109 hallway	400	SF	N/A
Dix Building-02	Floor tile with mastic (9"x9")	Tan	Tan 9"x9" with streaks	B1	B109 hallway	400	SF	Mostly scattered on the floor
Dix Building-06	Glue Dots	Dark brown	Glue dots under 1'x1' ceiling tiles	B1	B109 hallway	400	SF	Mostly scattered on the floor
Dix Building-02	Floor tile with mastic (9"x9")	Tan	Tan 9"x9" with streaks	B1	B111	300	SF	N/A
Dix Building-15	Corrugated paper	Off white	Corrugated paper in the pipe chase	B1	B111	20	SF	Mostly scattered on the floor
Dix Building-02	Floor tile with mastic (9"x9")	Tan	Tan 9"x9" with streaks	B1	B112	400	SF	N/A
Dix Building-10	Caulking, Window	Gray	Gray window caulking	B1	B112	40	LF	N/A
Dix Building-02	Floor tile with mastic (9"x9")	Tan	Tan 9"x9" with streaks	B1	B114	350	SF	N/A
Dix Building-10	Caulking, Window	Gray	Gray window caulking	B1	B114	40	LF	N/A
Dix Building-02	Floor tile with mastic (9"x9")	Tan	Tan 9"x9" with streaks	B1	B115	500	SF	N/A
Dix Building-15	Corrugated paper	Off white	Corrugated paper in the pipe chase	B1	B115	30	SF	Mostly scattered on the floor
Dix Building-47	Sealant, Duct	Black	Black sealant	B1	B123	8	SF	N/A



Homogeneous Area ID	Material	Material Color	Material Description	Floor	Room	Quantity	Units	Field Notes
Dix Building-10	Caulking, Window	Gray	Gray window caulking	B1	B125	260	LF	N/A
Dix Building-10	Caulking, Window	Gray	Gray window caulking	B1	B125D	20	LF	N/A
Dix Building-10	Caulking, Window	Gray	Gray window caulking	B1	B125E	40	LF	N/A
Dix Building-10	Caulking, Window	Gray	Gray window caulking	B1	B125H	60	LF	N/A
Dix Building-02	Floor tile with mastic (9"x9")	Tan	Tan 9"x9" with streaks	B1	B125L	320	SF	N/A
Dix Building-10	Caulking, Window	Gray	Gray window caulking	B1	B125L	40	LF	N/A
Dix Building-02	Floor tile with mastic (9"x9")	Tan	Tan 9"x9" with streaks	B1	B125N	180	SF	N/A
Dix Building-10	Caulking, Window	Gray	Gray window caulking	B1	B125N	40	LF	N/A
Dix Building-17	Floor tile with mastic (12"x12")	Green	Green 12"x12" with white streaks	B1	B125Q	120	SF	N/A
Dix Building-17	Floor tile with mastic (12"x12")	Green	Green 12"x12" with white streaks	B1	B125R	400	SF	N/A
Dix Building-16	Floor tile with mastic (12"x12")	Off white	Off white 12"x12" with streaks	B1	B125S	450	SF	N/A
Dix Building-06	Glue Dots	Dark brown	Glue dots under 1'x1' ceiling tiles	B1	B127	500	SF	Mostly scattered on the floor
Dix Building-10	Caulking, Window	Gray	Gray window caulking	B1	B130	60	LF	N/A
Dix Building-15	Corrugated paper	Off white	Corrugated paper in the pipe chase	B1	B130	50	SF	Mostly scattered on the floor
Dix Building-16	Floor tile with mastic (12"x12")	Off white	Off white 12"x12" with streaks	B1	B130	500	SF	N/A
Dix Building-02	Floor tile with mastic (9"x9")	Tan	Tan 9"x9" with streaks	B1	B131	380	SF	N/A
Dix Building-10	Caulking, Window	Gray	Gray window caulking	B1	B131	40	LF	N/A
Dix Building-10	Caulking, Window	Gray	Gray window caulking	B1	B131B	40	LF	N/A
Dix Building-10	Caulking, Window	Gray	Gray window caulking	B1	B133	80	LF	N/A
Dix Building-10	Caulking, Window	Gray	Gray window caulking	B1	B134A	40	LF	N/A
Dix Building-16	Floor tile with mastic (12"x12")	Off white	Off white 12"x12" with streaks	B1	B134A	500	SF	N/A
Dix Building-16	Floor tile with mastic (12"x12")	Off white	Off white 12"x12" with streaks	B1	B134B	400	SF	N/A
Dix Building-10	Caulking, Window	Gray	Gray window caulking	B1	B137	60	LF	N/A
Dix Building-15	Corrugated paper	Off white	Corrugated paper in the pipe chase	B1	B137	20	SF	Mostly scattered on the floor
Dix Building-16	Floor tile with mastic (12"x12")	Off white	Off white 12"x12" with streaks	B1	B137	400	SF	N/A
Dix Building-15	Corrugated paper	Off white	Corrugated paper in the pipe chase	B1	B138	20	SF	Mostly scattered on the floor
Dix Building-16	Floor tile with mastic (12"x12")	Off white	Off white 12"x12" with streaks	B1	B139	100	SF	N/A
Dix Building-15	Corrugated paper	Off white	Corrugated paper in the pipe chase	B1	B140	20	SF	Mostly scattered on the floor
Dix Building-10	Caulking, Window	Gray	Gray window caulking	B1	B141	60	LF	N/A
Dix Building-16	Floor tile with mastic (12"x12")	Off white	Off white 12"x12" with streaks	B1	B141	750	SF	N/A
Dix Building-15	Corrugated paper	Off white	Corrugated paper in the pipe chase	B1	B142	20	SF	Mostly scattered on the floor
Dix Building-16	Floor tile with mastic (12"x12")	Off white	Off white 12"x12" with streaks	B1	B148	100	SF	N/A
Dix Building-02	Floor tile with mastic (9"x9")	Tan	Tan 9"x9" with streaks	B1	Center hallway Section 1	850	SF	N/A
Dix Building-06	Glue Dots	Dark brown	Glue dots under 1'x1' ceiling tiles	B1	Center hallway Section 1	850	SF	Mostly scattered on the floor
Dix Building-15	Corrugated paper	Off white	Corrugated paper in the pipe chase	B1	Center hallway Section 1	10	SF	Mostly scattered on the floor
Dix Building-02	Floor tile with mastic (9"x9")	Tan	Tan 9"x9" with streaks	B1	Center hallway Section 2	900	SF	N/A
Dix Building-06	Glue Dots	Dark brown	Glue dots under 1'x1' ceiling tiles	B1	Center hallway Section 2	50	SF	Mostly scattered on the floor

Homogeneous Area ID	Material	Material Color	Material Description	Floor	Room	Quantity	Units	Field Notes
Dix Building-02	Floor tile with mastic (9"x9")	Tan	Tan 9"x9" with streaks	B1	Elevator lobby 1	300	SF	N/A
Dix Building-06	Glue Dots	Dark brown	Glue dots under 1'x1' ceiling tiles	B1	Elevator lobby 1	300	SF	Mostly scattered on the floor
Dix Building-15	Corrugated paper	Off white	Corrugated paper in the pipe chase	B1	Elevator lobby 1	40	SF	Mostly scattered on the floor
Dix Building-02	Floor tile with mastic (9"x9")	Tan	Tan 9"x9" with streaks	B1	Elevator lobby 2	350	SF	N/A
Dix Building-06	Glue Dots	Dark brown	Glue dots under 1'x1' ceiling tiles	B1	Elevator lobby 2	350	SF	Mostly scattered on the floor
Dix Building-29	Duct Insulation	White	1.5'x8" White Duct insulation	B1	Hallways	800	LF	Mostly gone(Estimated)
Dix Building-02	Floor tile with mastic (9"x9")	Tan	Tan 9"x9" with streaks	B1	North hallway	960	SF	N/A
Dix Building-06	Glue Dots	Dark brown	Glue dots under 1'x1' ceiling tiles	B1	North hallway	960	SF	Mostly scattered on the floor
Dix Building-06	Glue Dots	Dark brown	Glue dots under 1'x1' ceiling tiles	B1	South hallway	800	SF	Mostly scattered on the floor
Dix Building-15	Corrugated paper	Off white	Corrugated paper in the pipe chase	B1	South hallway	30	SF	Mostly scattered on the floor
Dix Building-16	Floor tile with mastic (12"x12")	Off white	Off white 12"x12" with streaks	B1	South hallway	800	SF	N/A
Dix Building-02	Floor tile with mastic (9"x9")	Tan	Tan 9"x9" with streaks	B1	Southwest hallway	270	SF	N/A
Dix Building-06	Glue Dots	Dark brown	Glue dots under 1'x1' ceiling tiles	B1	Southwest hallway	270	SF	Mostly scattered on the floor
Dix Building-49	Duct Insulation	White	White duct insulation	B2	B123	500	SF	N/A
Dix Building-24	Pipe Fittings	White	4"D- 6"D pipe fittings	B2	B201	3	Each	N/A
Dix Building-15	Corrugated paper	Off white	Corrugated paper in the pipe chase	B2	B202	1100	SF	Mostly scattered on the floor
Dix Building-19	Pipe Insulation	White	4"D -6"D pipe insulation	B2	B202	1700	LF	N/A
Dix Building-20	Pipe Fittings	White	12"D- 15"D pipe insulation	B2	B202	1100	LF	N/A
Dix Building-21	Pipe Insulation	White	2"D- 4"D pipe insulation	B2	B202	1100	LF	N/A
Dix Building-24	Pipe Fittings	White	pipe fittings	B2	B202	1000	Each	Including 2"-4", 4"-6" and 12"-15"
Dix Building-38	Debris	Multiple	Debris on the floor	B2	B202	3000	SF	Whole room is a debris field
Dix Building-50	Tank Insulation	White	12'x6' tank insulation	B2	B202	3	Each	Debris related to this include in HA Dix Building-38 quantity
Dix Building-19	Pipe Insulation	White	4"D -6"D pipe insulation	B2	B203	3000	LF	N/A
Dix Building-24	Pipe Fittings	White	Pipe fittings	B2	B203	700	Each	Including 2"-4", 4"-6" and 12"-15"
Dix Building-38	Debris	Multiple	Debris on the floor	B2	B203	2500	SF	Whole room is a debris field
Dix Building-19	Pipe Insulation	White	4"D -6"D pipe insulation	B2	B204	100	LF	N/A
Dix Building-20	Pipe Insulation	White	12"D- 15"D pipe insulation	B2	B204	35	LF	N/A
Dix Building-21	Pipe Insulation	White	2"D- 4"D pipe insulation	B2	B204	120	LF	N/A
Dix Building-24	Pipe Fittings	White	4"D- 6"D pipe fittings	B2	B204	10	Each	N/A
Dix Building-25	Pipe Fittings	White	12"D- 15"D pipe fittings	B2	B204	10	Each	N/A
Dix Building-19	Pipe Insulation	White	4"D -6"D pipe insulation	B2	B205	120	LF	N/A
Dix Building-19	Pipe Insulation	White	4"D -6"D pipe insulation	B2	B206	50	LF	N/A
Dix Building-21	Pipe Insulation	White	2"D- 4"D pipe insulation	B2	B206	30	LF	N/A
Dix Building-24	Pipe Fittings	White	4"D- 6"D pipe fittings	B2	B206	9	Each	N/A
Dix Building-26	Pipe Fittings	White	2"D- 4"D pipe fittings	B2	B206	12	Each	N/A
Dix Building-19	Pipe Insulation	White	4"D -6"D pipe insulation	B2	B207	120	LF	N/A

Homogeneous Area ID	Material	Material Color	Material Description	Floor	Room	Quantity	Units	Field Notes
Dix Building-21	Pipe Insulation	White	2"D- 4"D pipe insulation	B2	B207	40	LF	N/A
Dix Building-24	Pipe Fittings	White	4"D- 6"D pipe fittings	B2	B207	30	Each	N/A
Dix Building-19	Pipe Insulation	White	4"D -6"D pipe insulation	B2	B208	40	LF	N/A
Dix Building-20	Pipe Insulation	White	12"D- 15"D pipe insulation	B2	B208	45	LF	N/A
Dix Building-24	Pipe Fittings	White	4"D- 6"D pipe fittings	B2	B208	12	Each	N/A
Dix Building-25	Pipe Fittings	White	12"D- 15"D pipe fittings	B2	B208	45	Each	N/A
Dix Building-19	Pipe Insulation	White	4"D-6"D pipe insulation	B2	B209	110	LF	N/A
Dix Building-21	Pipe Insulation	White	2"D- 4"D pipe insulation	B2	B209	80	LF	N/A
Dix Building-24	Pipe Fittings	White	4"D- 6"D pipe fittings	B2	B209	22	Each	N/A
Dix Building-24	Pipe Fittings	White	4"D- 6"D pipe fittings	B2	B209	22	Each	N/A
Dix Building-15	Corrugated paper	Off white	Corrugated paper in the pipe chase	B2	B210	20	SF	Mostly scattered on the floor
Dix Building-24	Pipe Fittings	White	4"D- 6"D pipe fittings	B2	B210	7	Each	N/A
Dix Building-24	Pipe Fittings	White	4"D- 6"D pipe fittings	B2	B210	7	Each	N/A
Dix Building-19	Pipe Insulation	White	4"D -6"D pipe insulation	B2	B212	25	LF	N/A
Dix Building-21	Pipe Insulation	White	2"D- 4"D pipe insulation	B2	B212	25	LF	N/A
Dix Building-24	Pipe Fittings	White	4"D- 6"D pipe fittings	B2	B212	14	Each	N/A
Dix Building-26	Pipe Fittings	White	2"D- 4"D pipe fittings	B2	B212	14	Each	N/A
Dix Building-24	Pipe Fittings	White	4"D- 6"D pipe fittings	B2	B213	4	Each	N/A
Dix Building-24	Pipe Fittings	White	4"D- 6"D pipe fittings	B2	B215	4	Each	N/A
Dix Building-24	Pipe Fittings	White	4"D- 6"D pipe fittings	B2	B216	4	Each	N/A
Dix Building-40	Water proofing	Black	Exterior water proofing	Exterior	Around the building	125	LF	N/A
Dix Building-41	Caulking, Door	Gray	Gray door caulking from outside	Exterior	Doors open to the exterior	8	Each	N/A
Dix Building-39	Caulking, Window	Gray	Outside window caulking	Exterior	East side on the back	12	Each	4 large windows
Dix Building-39	Caulking, Window	Gray	Outside window caulking	Exterior	East side on the back	260	Each	4 panel windows
Dix Building-39	Caulking, Window	Gray	Outside window caulking	Exterior	Front side	150	Each	4 panel windows
Dix Building-39	Caulking, Window	Gray	Outside window caulking	Exterior	Front side	20	Each	8 panel windows
Dix Building-39	Caulking, Window	Gray	Outside window caulking	Exterior	North back side	53	Each	4 panel windows
Dix Building-39	Caulking, Window	Gray	Outside window caulking	Exterior	North back side	6	Each	4 windows together
Dix Building-39	Caulking, Window	Gray	Outside window caulking	Exterior	North back side	6	Each	4 large windows together
Dix Building-39	Caulking, Window	Gray	Outside window caulking	Exterior	North mechanical room	106	Each	4 panel windows
Dix Building-43	Window sill caulking	Gray	window sill caulking	Exterior	Outside window sill caulking	772	Each	N/A
Dix Building-39	Caulking, Window	Gray	Outside window caulking	Exterior	South back side	53	Each	4 panel windows
Dix Building-39	Caulking, Window	Gray	Outside window caulking	Exterior	South side on the front	106	Each	4 panel windows in south front side
Assumed	Fire Doors	Multiple	Firedoors inside the building	Interior	Interior	16	Each	N/A





## Appendix C: Lead-Based Paint Survey Summary

Xrf Reading	Component	Substrate	Side	Condition	Color	Floor	Room	Results	Lead (Mg/Cm <sup>2</sup> )
1	Calibration							Positive	1.2
2	Calibration							Positive	1.2
3	Calibration							Positive	1.2
4	Wall	Concrete	A	Deteriorated	Green	Fourth	401	Negative	0.04
5	Wall	Concrete	B	Deteriorated	Blue	Fourth	401	Negative	0.05
6	Wall	Concrete	C	Deteriorated	Green	Fourth	401	Negative	0.11
7	Wall	Concrete	D	Deteriorated	Green	Fourth	401	Negative	0.06
8	Wall	Concrete	D	Deteriorated	White	Fourth	401	Negative	0.1
9	Window Trim	Metal	C	Deteriorated	Green	Fourth	401	Negative	0.01
10	Window Trim	Metal	C	Deteriorated	Green	Fourth	401	Negative	0.08
11	Outer Window Trim	Metal	C	Deteriorated	White	Fourth	401	Negative	0.04
12	Door	Wood	A	Deteriorated	Brown	Fourth	401	Negative	0.02
13	Door Frame	Metal	A	Deteriorated	White	Fourth	401	Negative	0.07
14	Wall	Concrete	A	Deteriorated	White	Fourth	Hallway Adj 402	Negative	0.04
15	Wall	Concrete	C	Deteriorated	White	Fourth	Hallway Adj 402	Negative	0.05
16	Wall	Wall Tile	A	Intact	Gray	Fourth	Hallway Adj 402	Negative	0.8
17	Wall	Wall Tile	C	Intact	Gray	Fourth	Hallway Adj 402	Negative	0.9
18	Radiator Cover	Metal	C	Intact	Beige	Fourth	Hallway Adj 402	Negative	0.01
19	Wall	Concrete	A	Deteriorated	Green	Fourth	409	Negative	0.04
20	Wall	Concrete	A	Deteriorated	Tan	Fourth	409	Negative	0.03
21	Window Trim	Metal	C	Deteriorated	White	Fourth	409	Negative	0.02
22	Door Frame	Metal	A	Deteriorated	White	Fourth	409	Negative	0.19
23	Wall	Concrete	A	Deteriorated	Beige	Fifth	Hallway Adj To 414	Negative	0.08
24	Wall	Concrete	C	Deteriorated	Beige	Fifth	Hallway Adj To 414	Negative	0.05
25	Stair 4-C Door	Metal	C	Deteriorated	Beige	Fifth	Hallway Adj To 414	Negative	0.07
26	Cabinet	Metal	C	Deteriorated	White	Fourth	Hallway Adj To 414	Negative	0
27	Wall	Concrete	C	Deteriorated	Beige	Fourth	413a	Negative	0.05
28	Wall	Concrete	B	Deteriorated	Blue	Fourth	413a	Negative	0.13
29	Cabinet	Wood	D	Deteriorated	Blue	Fourth	413a	Positive	2.5
30	Cabinet	Wood	D	Deteriorated	Blue	Fourth	413a	Negative	0
31	Cabinet	Wood	D	Deteriorated	Blue	Fourth	413a	Positive	2.1
32	Door Frame	Metal	A	Deteriorated	White	Fourth	413a	Negative	0
33	Elevator Door	Metal	D	Deteriorated	Green	Fourth	Elevator Lobby	Negative	0.21
34	Elevator Door Frame	Metal	D	Deteriorated	Green	Fourth	Elevator Lobby	Negative	0.23
35	Window Trim	Metal	B	Deteriorated	Beige	Fourth	Elevator Lobby	Negative	0.02



Xrf Reading	Component	Substrate	Side	Condition	Color	Floor	Room	Results	Lead (Mg/Cm <sup>2</sup> )
36	Wall	Concrete	B	Deteriorated	Green	Fourth	Elevator Lobby	Negative	0.06
37	Wall	Concrete	B	Deteriorated	Beige	Fourth	Elevator Lobby	Negative	0.08
38	Wall	Walk Tile	C	Deteriorated	Beige	Fourth	435	Negative	0.7
39	Closet Door	Wood	D	Deteriorated	Beige	Fourth	435	Negative	0.27
40	Wall	Concrete	A	Deteriorated	Beige	Fourth	435	Negative	0.18
41	Column	Concrete	A	Deteriorated	Beige	Fourth	435	Negative	0.2
42	Wall	Concrete	D	Deteriorated	Green	Fourth	435	Negative	0.17
43	Window Trim	Metal	D	Deteriorated	Green	Fourth	435	Negative	0.04
44	Window Trim	Metal	C	Deteriorated	Beige	Fourth	435	Negative	0.05
45	Sink	Ceramic	D	Deteriorated	White	Fourth	448	Negative	0.08
46	Wall	Concrete	B	Deteriorated	Green	Fourth	462	Negative	0.08
47	Window Trim	Metal	A	Deteriorated	Beige	Fourth	462	Negative	0.03
48	Door Frame	Metal	C	Deteriorated	Beige	Fourth	462	Negative	0.11
49	Wall	Concrete	A	Deteriorated	Beige	Fourth	Hallway Adj 438	Negative	0.06
50	438 Door Frame	Metal	A	Deteriorated	Beige	Fourth	Hallway Adj 438	Negative	0.04
51	Wall	Concrete	C	Deteriorated	Beige	Fourth	Hallway Adj 438	Negative	0.13
52	Wall	Wall Tile	C	Deteriorated	Gray	Fourth	419	Negative	0.8
53	Window Trim	Wall Tile	C	Deteriorated	Gray	Fourth	419	Negative	0.05
54	Sink	Ceramic	D	Deteriorated	White	Fourth	419	Negative	0.02
55	Wall	Brick	C	Deteriorated	White	Seventh	Mechanical Room	Negative	0.16
56	Column	Concrete	C	Deteriorated	White	Seventh	Mechanical Room	Negative	0.17
57	Duct	Metal	D	Deteriorated	White	Seventh	Mechanical Room	Negative	0.04
58	Handrail	Metal	C	Deteriorated	Gray	Seventh	Mechanical Room	Positive	2.5
59	Roof Ladder	Metal	D	Deteriorated	Gray	Seventh	Mechanical Room	Positive	3.1
60	Elevator Room Door	Metal	D	Deteriorated	Gray	Seventh	Mechanical Room	Negative	0.12
61	Elevator Room Door Frame	Metal	D	Deteriorated	Gray	Seventh	Mechanical Room	Negative	0.06
62	Mech Room Entrance Door	Metal	A	Deteriorated	Gray	Seventh	Mechanical Room	Negative	0.03
63	Mech Room Entrance Door Frame	Metal	A	Deteriorated	Gray	Seventh	Mechanical Room	Negative	0.01
64	Elevator Winch	Metal	D	Deteriorated	Gray	Seventh	Central Elevator Room	Negative	0.04
65	Elevator Winch	Metal	D	Deteriorated	Blue	Seventh	Central Elevator Room	Negative	0.08
66	Elevator Winch	Metal	B	Deteriorated	Green	Seventh	Central Elevator Room	Negative	0.07
67	Elevator Winch	Metal	C	Deteriorated	Red	Seventh	Central Elevator Room	Negative	0.07

Xrf Reading	Component	Substrate	Side	Condition	Color	Floor	Room	Results	Lead (Mg/Cm <sup>2</sup> )
68	Column	Concrete	A	Deteriorated	White	Seventh	Central Elevator Room	Negative	0.17
69	Electrical Cabinet	Metal	A	Deteriorated	Blue	Seventh	Central Elevator Room	Negative	0.08
70	Elevator Room Door	Metal	B	Deteriorated	Gray	Seventh	South Mech Room	Negative	0.03
71	Elevator Room Door	Metal	B	Deteriorated	Gray	Seventh	South Mech Room	Negative	0.03
72	Elevator Room Door	Metal	B	Deteriorated	Gray	Seventh	South Mech Room	Negative	0.4
73	Pipe	Metal	B	Deteriorated	Red	Seventh	Central Elevator Room	Negative	0.2
74	Fire Ext Holder	Wood	C	Deteriorated	Red	Seventh	Central Elevator Room	Negative	0.5
75	Table Holder	Metal	C	Deteriorated	Gray	Seventh	Central Elevator Room	Negative	0.4
76	Calibration							Positive	1.2
77	Calibration							Positive	1.2
78	Calibration							Positive	1.2
79	Wall	Concrete	A	Deteriorated	White	Sixth	600	Negative	0.2
80	Column	Concrete	A	Deteriorated	White	Sixth	600	Negative	0.1
81	Window Trim	Metal	A	Deteriorated	White	Sixth	600	Negative	0.17
82	Window Trim	Metal	A	Deteriorated	Orange	Sixth	600	Negative	0.1
83	Door Frame	Metal	D	Deteriorated	White	Sixth	600	Negative	0.04
84	Wall	Concrete	C	Deteriorated	Blue	Sixth	600	Negative	0.28
85	Wall	Concrete	A	Deteriorated	White	Sixth	Nw Stair	Negative	0.12
86	Wall	Concrete	D	Deteriorated	Gray	Sixth	Nw Stair	Negative	0.09
87	Nw Stair Door	Metal	C	Deteriorated	Red	Sixth	Nw Stair	Negative	0.07
88	Cabinet	Wood	B	Deteriorated	White	Sixth	605	Negative	0.03
89	Door	Metal	B	Deteriorated	Blue	Sixth	Hall Adj Elevator Lobby	Negative	0.16
90	Wall	Ceramic	C	Deteriorated	Green	Sixth	629	Negative	0.17
91	Window Trim	Ceramic	D	Deteriorated	White	Sixth	629	Negative	0.04
92	Door	Metal	C	Deteriorated	Blue	Sixth	Hallway Adj 636	Negative	0.07
93	Door	Metal	C	Deteriorated	Brown	Sixth	Hallway Adj 636	Negative	0.16
94	Wall	Concrete	C	Deteriorated	Beige	Sixth	641	Negative	0.07
95	Window Trim	Metal	C	Deteriorated	Beige	Sixth	641	Negative	0.1
96	Window Trim	Metal	A	Deteriorated	Beige	Sixth	641	Negative	0.03
97	Calibration							Positive	1.2
98	Calibration							Positive	1.1
99	Calibration							Positive	1.0
100	Calibration							Positive	1.0
101	Calibration							Positive	1.1

Xrf Reading	Component	Substrate	Side	Condition	Color	Floor	Room	Results	Lead (Mg/Cm <sup>2</sup> )
102	Calibration							Positive	1.1
103	Wall	Plaster	A	Deteriorated	Beige	Fourth	402	Negative	0.04
104	Wall	Plaster	B	Deteriorated	Blue	Fourth	402	Negative	0.02
105	Wall	Plaster	C	Deteriorated	Beige	Fourth	402	Negative	0.06
106	Wall	Plaster	D	Deteriorated	Beige	Fourth	402	Negative	0.02
107	Wall	Plaster	D	Deteriorated	Beige	Fourth	402	Negative	0.03
108	Ceiling	Plaster	D	Deteriorated	White	Fourth	402	Negative	0.04
109	Window	Metal	A	Deteriorated	Beige	Fourth	402	Negative	0.04
110	Window Frame	Metal	A	Deteriorated	Beige	Fourth	402	Negative	0.02
111	Window Frame	Metal	A	Deteriorated	Beige	Fourth	402	Negative	0.04
112	Door Frame	Metal	C	Deteriorated	Beige	Fourth	402	Negative	0.02
113	Wall	Plaster	A	Deteriorated	Green	Fourth	402	Negative	0.04
114	Baseboard	Terrazzo	A	Deteriorated	Green	Fourth	402	Negative	0
115	Radiator Cover	Metal	A	Deteriorated	Gray	Fourth	402	Negative	0.01
116	Radiator Cover	Metal	A	Deteriorated	Beige	Fourth	402	Negative	0.01
117	Radiator Cover	Metal	A	Deteriorated	Gray	Fourth	414	Negative	0.01
118	Wall	Ceramic Tile	A	Deteriorated	Green	Fourth	414	Negative	0.23
119	Wall	Ceramic Tile	B	Deteriorated	Green	Fourth	414	Negative	0.09
120	Wall	Ceramic Tile	C	Deteriorated	Green	Fourth	414	Negative	0.07
121	Wall	Ceramic Tile	D	Deteriorated	Green	Fourth	414	Negative	0.25
122	Wall	Plaster	A	Deteriorated	Beige	Fourth	414	Negative	0.07
123	Wall	Plaster	B	Deteriorated	Beige	Fourth	414	Negative	0.1
124	Wall	Plaster	C	Deteriorated	Beige	Fourth	414	Negative	0.05
125	Wall	Plaster	D	Deteriorated	Beige	Fourth	414	Negative	0.14
126	Ceiling	Plaster	D	Deteriorated	Beige	Fourth	414	Negative	0.05
127	Ceiling	Plaster	D	Deteriorated	Beige	Fourth	414	Negative	0.08
128	Floor	Ceramic Tile	D	Deteriorated	Brown	Fourth	414	Negative	0
129	Wall	Ceramic Tile	A	Deteriorated	Beige	Fourth	416	Positive	6.9
130	Wall	Ceramic Tile	B	Deteriorated	Beige	Fourth	416	Positive	4.2
131	Wall	Ceramic Tile	C	Deteriorated	Beige	Fourth	416	Positive	4.8
132	Wall	Ceramic Tile	D	Deteriorated	Beige	Fourth	416	Positive	6.6
133	Wall	Ceramic Tile	A	Deteriorated	Black	Fourth	416	Positive	4.5
134	Stall	Granite	D	Deteriorated	Beige	Fourth	416	Negative	0
135	Door(Pipe Chase)	Metal	D	Deteriorated	Beige	Fourth	416	Negative	0.01



Xrf Reading	Component	Substrate	Side	Condition	Color	Floor	Room	Results	Lead (Mg/Cm <sup>2</sup> )
136	Door(Pipe Chase)	Metal	A	Deteriorated	Gray	Fourth	418	Negative	0.06
137	Door(Pipe Chase)	Metal	A	Deteriorated	Beige	Fourth	418	Negative	0.01
138	\$Ink	Metal	B	Deteriorated	Beige	Fourth	418	Negative	-0.08
139	Shelf	Wood	B	Deteriorated	Beige	Fourth	418	Negative	0.01
140	Shelf	Wood	B	Deteriorated	Gray	Fourth	418	Negative	0.01
141	Wall	Wood	A	Deteriorated	Beige	Fourth	420a	Negative	0
142	Wall	Wood	A	Deteriorated	Beige	Fourth	420a	Negative	0
143	Stall	Metal	A	Deteriorated	Beige	Fourth	420a	Negative	0
144	Wall	Ceramic	A	Deteriorated	Gray	Fourth	420a	Negative	0.8
145	Wall	Ceramic	B	Deteriorated	Gray	Fourth	420a	Negative	0.8
146	Window	Metal	B	Deteriorated	Gray	Fourth	420c	Negative	0.01
147	Window Frame	Metal	B	Deteriorated	Gray	Fourth	420c	Negative	0.02
148	Door	Metal	D	Deteriorated	Gray	Fourth	420c	Negative	0.02
149	Door Frame	Metal	D	Deteriorated	Gray	Fourth	420c	Negative	0.01
150	Door	Metal	D	Deteriorated	Beige	Fourth	420c	Negative	0
151	Wall	Plaster	A	Deteriorated	Beige	Fourth	421f	Negative	0.17
152	Wall	Plaster	A	Deteriorated	Gray	Fourth	421f	Negative	0.04
153	Ceiling	Plaster	A	Deteriorated	Beige	Fourth	421f	Negative	0.13
154	Door	Metal	B	Deteriorated	Brown	Fourth	421f	Negative	0.13
155	Door	Metal	B	Deteriorated	Brown	Fourth	421f	Negative	0.26
156	Door	Metal	B	Deteriorated	Brown	Fourth	421f	Negative	0.18
157	Door Frame	Metal	B	Deteriorated	Beige	Fourth	421f	Negative	0.1
158	Door Frame	Metal	B	Deteriorated	Beige	Fourth	421f	Negative	0.05
159	Door Frame	Metal	B	Deteriorated	Beige	Fourth	421f	Negative	0.1
160	Wall	Plaster	A	Deteriorated	Yellow	Fourth	Northwest Hallway	Negative	0.05
161	Wall	Plaster	B	Deteriorated	Yellow	Fourth	Northwest Hallway	Negative	0.05
162	Wall	Ceramic	A	Deteriorated	Gray	Fourth	Northwest Hallway	Negative	0.9
163	Wall	Ceramic	B	Deteriorated	Gray	Fourth	Northwest Hallway	Negative	0.8
164	Wall	Ceramic	A	Deteriorated	Beige	Fourth	421a	Positive	6.2
165	Wall	Ceramic	A	Deteriorated	Black	Fourth	421a	Positive	13.7
166	Wall	Brick	A	Deteriorated	Tan	Seventh	Mech Room(South)	Negative	0.14
167	Wall	Brick	B	Deteriorated	Tan	Seventh	Mech Room(South)	Negative	0.13
168	Wall	Brick	C	Deteriorated	Tan	Seventh	Mech Room(South)	Negative	0.21
169	Wall	Brick	D	Deteriorated	Tan	Seventh	Mech Room(South)	Negative	0.17
170	Ductwork	Metal	A	Deteriorated	Beige	Seventh	Mech Room(South)	Negative	0.12

Xrf Reading	Component	Substrate	Side	Condition	Color	Floor	Room	Results	Lead (Mg/Cm <sup>2</sup> )
171	Ductwork	Metal	A	Deteriorated	Beige	Seventh	Mech Room(South)	Negative	0.06
172	Ductwork	Metal	A	Deteriorated	Beige	Seventh	Mech Room(South)	Negative	0.06
173	Ductwork	Metal	A	Deteriorated	Beige	Seventh	Mech Room(South)	Negative	0.06
174	Ductwork	Metal	A	Deteriorated	Red	Seventh	Mech Room(South)	Negative	0.03
175	Ductwork	Metal	C	Deteriorated	Red	Seventh	Mech Room(South)	Negative	0.01
176	Ductwork	Metal	C	Deteriorated	Lt Gray	Seventh	Mech Room(South)	Negative	0.01
177	Column	Concrete	A	Deteriorated	Beige	Seventh	Mech Room(South)	Negative	0.19
178	Column	Concrete	C	Deteriorated	Beige	Seventh	Mech Room(South)	Negative	0.11
179	Door	Metal	A	Deteriorated	Gray	Seventh	Mech Room(South)	Negative	0.13
180	Door	Metal	A	Deteriorated	Gray	Seventh	Mech Room(South)	Negative	0.08
181	Door Frame	Metal	A	Deteriorated	Gray	Seventh	Mech Room(South)	Negative	0.04
182	Wall	Brick	A	Deteriorated	Beige	Seventh	Mech Room(Central)	Negative	0.05
183	Wall	Brick	B	Deteriorated	Beige	Seventh	Mech Room(Central)	Negative	0.16
184	Wall	Brick	C	Deteriorated	Beige	Seventh	Mech Room(Central)	Negative	0.16
185	Wall	Brick	D	Deteriorated	Beige	Seventh	Mech Room(Central)	Negative	0.15
186	Ceiling	Concrete	A	Deteriorated	White	Seventh	Mech Room(Central)	Negative	0.02
187	Calibration							Positive	1.2
188	Calibration							Positive	1.1
189	Calibration							Positive	1.2
190	Calibration							Positive	1.2
191	Calibration							Positive	1.1
192	Calibration							Positive	1.2
193	Wall	Plaster	C	Deteriorated	Beige	Sixth	602	Negative	0.05
194	Wall	Plaster	D	Deteriorated	Beige	Sixth	602	Negative	0.02
195	Window	Metal	A	Deteriorated	Beige	Sixth	602	Negative	0.02
196	Window Frame	Metal	A	Deteriorated	Beige	Sixth	602	Negative	0.03
197	Door Frame	Metal	C	Deteriorated	Beige	Sixth	602	Negative	0.01
198	Wall	Ceramic	A	Deteriorated	Beige	Sixth	601	Positive	5.3
199	Wall	Ceramic	A	Deteriorated	Black	Sixth	601	Positive	8.1
200	Wall	Plaster	A	Deteriorated	Green	Sixth	601	Negative	0.07
201	Wall	Ceramic	A	Deteriorated	Beige	Sixth	611a	Positive	5.2
202	Wall	Ceramic	B	Deteriorated	Beige	Sixth	611a	Positive	4.5
203	Wall	Ceramic	C	Deteriorated	Beige	Sixth	611a	Positive	5.5
204	Wall	Ceramic	D	Deteriorated	Beige	Sixth	611a	Positive	5.1

Xrf Reading	Component	Substrate	Side	Condition	Color	Floor	Room	Results	Lead (Mg/Cm <sup>2</sup> )
205	Wall	Ceramic	D	Deteriorated	Black	Sixth	611a	Positive	5.7
206	Door	Metal	C	Deteriorated	Blue	Sixth	628 Central South Stair	Negative	0.13
207	Door	Metal	C	Deteriorated	Beige	Sixth	628 Central South Stair	Negative	0.17
208	Door	Metal	C	Deteriorated	Beige	Sixth	628 Central South Stair	Negative	0.06
209	Door	Metal	D	Deteriorated	Blue	Sixth	638c	Negative	0
210	Door	Metal	D	Deteriorated	Blue	Sixth	638c	Negative	0
211	Door	Metal	D	Deteriorated	Brown	Sixth	638c	Negative	0
212	Door	Metal	D	Deteriorated	Brown	Sixth	638c	Negative	0.34
213	Door Frame	Metal	D	Deteriorated	Beige	Sixth	638c	Negative	0.07
214	Wall	Ceramic	A	Deteriorated	Beige	Sixth	639b	Positive	5.7
215	Wall	Ceramic	A	Deteriorated	Black	Sixth	639b	Positive	5.4
216	Wall	Ceramic	A	Deteriorated	Beige	Sixth	639b	Positive	7
217	Wall	Ceramic	B	Deteriorated	Beige	Sixth	639b	Positive	6.8
218	Wall	Ceramic	C	Deteriorated	Beige	Sixth	639b	Positive	6.2
219	Wall	Ceramic	D	Deteriorated	Beige	Sixth	639b	Positive	6.2
220	Stall	Metal	B	Deteriorated	Pink	Sixth	639b	Negative	0.06
221	Floor	Ceramic	A	Deteriorated	Brown	Sixth	639b	Negative	0
222	Calibration							Positive	1.1
223	Calibration							Positive	1.0
224	Calibration							Positive	1.2
225	Calibration							Positive	1.1
226	Calibration							Positive	1.1
227	Calibration							Positive	1.0
228	Wall	Plaster	A	Deteriorated	Beige	Fifth	501	Negative	0.02
229	Wall	Plaster	B	Deteriorated	Beige	Fifth	501	Negative	0.11
230	Wall	Plaster	C	Deteriorated	Beige	Fifth	501	Negative	0.04
231	Wall	Plaster	Left	Deteriorated	Blue	Fifth	501	Negative	0.06
232	Wall	Plaster	D	Deteriorated	Blue	Fifth	501	Negative	0.11
233	Wall	Plaster	D	Deteriorated	Green	Fifth	501	Negative	0.08
234	Door Frame	Metal	A	Deteriorated	Beige	Fifth	501	Negative	0.01
235	Window Frame	Metal	C	Deteriorated	Beige	Fifth	501	Negative	0.04
236	Window Frame	Metal	C	Deteriorated	Beige	Fifth	501	Negative	0.09
237	Window Frame	Metal	C	Deteriorated	Green	Fifth	501	Negative	0.06
238	Window	Metal	C	Deteriorated	Beige	Fifth	501	Negative	0.03
239	Wall	Plaster	A	Deteriorated	Beige	Fifth	501	Negative	0.05
240	Wall	Plaster	A	Deteriorated	Beige	Fifth	507	Negative	0.07
241	Wall	Plaster	B	Deteriorated	Yellow	Fifth	507	Negative	0.04



Xrf Reading	Component	Substrate	Side	Condition	Color	Floor	Room	Results	Lead (Mg/Cm <sup>2</sup> )
242	Wall	Plaster	C	Deteriorated	Yellow	Fifth	507	Negative	0.09
243	Wall	Plaster	D	Deteriorated	Beige	Fifth	507	Negative	0.06
244	Ceiling	Plaster	D	Deteriorated	White	Fifth	507	Negative	0.08
245	Wall	Ceramic	A	Deteriorated	Dark Green	Fifth	504	Positive	2.2
246	Wall	Ceramic	B	Deteriorated	Dark Green	Fifth	504	Positive	2.3
247	Wall	Ceramic	C	Deteriorated	Dark Green	Fifth	504	Positive	2.3
248	Wall	Ceramic	Left	Deteriorated	Green	Fifth	504	Negative	0.18
249	Wall	Plaster	A	Deteriorated	Green	Fifth	504	Negative	0.11
250	Wall	Plaster	B	Deteriorated	Green	Fifth	504	Negative	0.03
251	Wall	Plaster	C	Deteriorated	Green	Fifth	504	Negative	0.04
252	Wall	Plaster	D	Deteriorated	Green	Fifth	504	Negative	0.04
253	Wall	Ceramic	A	Deteriorated	Gray	Fifth	North Hallway	Negative	0.7
254	Wall	Ceramic	B	Deteriorated	Gray	Fifth	North Hallway	Negative	0.9
255	Wall	Ceramic	C	Deteriorated	Gray	Fifth	North Hallway	Negative	0.8
256	Wall	Plaster	A	Deteriorated	Beige	Fifth	North Hallway	Negative	0.15
257	Wall	Plaster	B	Deteriorated	Beige	Fifth	North Hallway	Negative	0.06
258	Wall	Plaster	C	Deteriorated	Beige	Fifth	North Hallway	Negative	0.11
259	Wall	Ceramic	A	Deteriorated	Beige	Fifth	514a	Positive	8
260	Wall	Ceramic	B	Deteriorated	Beige	Fifth	514a	Positive	6.1
261	Wall	Ceramic	C	Deteriorated	Beige	Fifth	514a	Positive	6.8
262	Wall	Ceramic	D	Deteriorated	Beige	Fifth	514a	Positive	4.9
263	Wall	Plaster	A	Deteriorated	Yellow	Fifth	514a	Negative	0.02
264	Wall	Plaster	B	Deteriorated	Yellow	Fifth	514a	Negative	0.09
265	Wall	Plaster	C	Deteriorated	Yellow	Fifth	514a	Negative	0.05
266	Wall	Plaster	D	Deteriorated	Yellow	Fifth	514a	Negative	0.09
267	Ceiling	Plaster	D	Deteriorated	Yellow	Fifth	514a	Negative	0.04
268	Door Frame	Metal	D	Deteriorated	Yellow	Fifth	514a	Negative	0.05
269	Window	Metal	D	Deteriorated	Yellow	Fifth	514a	Negative	0.05
270	Window	Metal	D	Deteriorated	Yellow	Fifth	514a	Negative	0.13
271	Window Frame	Metal	D	Deteriorated	Yellow	Fifth	514a	Negative	0.05
272	Wall	Ceramic	A	Deteriorated	Aqua	Fifth	514a	Negative	0.2
273	Wall	Ceramic	B	Deteriorated	Aqua	Fifth	514a	Negative	0.29
274	Wall	Ceramic	C	Deteriorated	Aqua	Fifth	514a	Negative	0.05
275	Wall	Ceramic	D	Deteriorated	Aqua	Fifth	514a	Negative	0.24
276	Wall	Ceramic	A	Deteriorated	Aqua	Fifth	515	Negative	0.21
277	Wall	Ceramic	B	Deteriorated	Aqua	Fifth	515	Negative	0.28
278	Wall	Ceramic	C	Deteriorated	Aqua	Fifth	515	Negative	0.02
279	Wall	Ceramic	D	Deteriorated	Aqua	Fifth	515	Negative	0.03

Xrf Reading	Component	Substrate	Side	Condition	Color	Floor	Room	Results	Lead (Mg/Cm <sup>2</sup> )
280	Wall	Ceramic	D	Intact	Beige	Fifth	515 Rr	Positive	5
281	Wall	Ceramic	A	Intact	Beige	Fifth	515 Rr	Positive	4.7
282	Wall	Ceramic	B	Intact	Beige	Fifth	515 Rr	Positive	5.7
283	Wall	Ceramic	C	Intact	Beige	Fifth	515 Rr	Positive	5.5
284	Wall	Ceramic	D	Intact	Beige	Fifth	515 Rr	Positive	5
285	Wall	Ceramic	D	Intact	Black	Fifth	515 Rr	Positive	5.3
286	Door	Metal	D	Deteriorated	Green	Fifth	Elevator	Negative	0.16
287	Door Frame	Metal	D	Deteriorated	Green	Fifth	Elevator	Negative	0.14
288	Stall	Granite	D	Deteriorated	Beige,Black	Fifth	540b	Negative	0
289	Wall	Ceramic	A	Deteriorated	Green	Fifth	540b	Negative	0.5
290	Wall	Ceramic	B	Deteriorated	Green	Fifth	540b	Negative	0.21
291	Wall	Ceramic	C	Deteriorated	Green	Fifth	540b	Negative	0.29
292	Wall	Ceramic	D	Deteriorated	Green	Fifth	540b	Negative	0.16
293	Floor	Ceramic	D	Deteriorated	Brown	Fifth	540b	Negative	0
294	Wall	Concrete	A	Deteriorated	Beige	Fifth	South Stairwell	Negative	0.07
295	Wall	Concrete	A	Deteriorated	Beige	Fifth	South Stairwell	Negative	0.08
296	Wall	Concrete	B	Deteriorated	Beige	Fifth	South Stairwell	Negative	0.14
297	Wall	Concrete	C	Deteriorated	Beige	Fifth	South Stairwell	Negative	0.07
298	Wall	Concrete	D	Deteriorated	Beige	Fifth	South Stairwell	Negative	0.07
299	Wall	Concrete	D	Deteriorated	Gray	Fifth	South Stairwell	Negative	0.14
300	Wall	Concrete	A	Deteriorated	Gray	Fifth	South Stairwell	Negative	0.06
301	Wall	Concrete	B	Deteriorated	Gray	Fifth	South Stairwell	Negative	0.03
302	Wall	Concrete	C	Deteriorated	Gray	Fifth	South Stairwell	Negative	0.12
303	Wall	Concrete	D	Deteriorated	Gray	Fifth	South Stairwell	Negative	0.11
304	Ceiling	Concrete	D	Deteriorated	Beige	Fifth	South Stairwell	Negative	0.13
305	Door	Metal	B	Deteriorated	Brown	Fifth	South Stairwell	Negative	0.07
306	Door Frame	Metal	B	Deteriorated	Brown	Fifth	South Stairwell	Negative	0.12
307	Door Frame	Metal	B	Deteriorated	Brown	Fifth	South Stairwell	Negative	0.1
308	Door Frame	Metal	B	Deteriorated	Brown	Fifth	North Stairwell	Negative	0.1
309	Door Frame	Metal	D	Deteriorated	Brown	Fifth	North Stairwell	Negative	0.14
310	Door Frame	Metal	D	Deteriorated	Brown	Fifth	North Stairwell	Negative	0.05
311	Wall	Concrete	A	Deteriorated	Beige	Fifth	North Stairwell	Negative	0.14
312	Wall	Concrete	B	Deteriorated	Beige	Fifth	North Stairwell	Negative	0.17
313	Wall	Concrete	C	Deteriorated	Beige	Fifth	North Stairwell	Negative	0.19
314	Wall	Concrete	D	Deteriorated	Beige	Fifth	North Stairwell	Negative	0.15
315	Ceiling	Concrete	D	Deteriorated	Beige	Fifth	North Stairwell	Negative	0.14
316	Wall	Concrete	A	Deteriorated	Gray	Fifth	North Stairwell	Negative	0.11
317	Wall	Concrete	B	Deteriorated	Gray	Fifth	North Stairwell	Negative	0.26
318	Wall	Concrete	C	Deteriorated	Gray	Fifth	North Stairwell	Negative	0.18

Xrf Reading	Component	Substrate	Side	Condition	Color	Floor	Room	Results	Lead (Mg/Cm <sup>2</sup> )
319	Wall	Concrete	D	Deteriorated	Gray	Fifth	North Stairwell	Negative	0.07
320	Wall	Ceramic	A	Deteriorated	Beige	Third	316	Positive	7.1
321	Wall	Ceramic	C	Deteriorated	Beige	Third	316	Positive	6.9
322	Wall	Ceramic	C	Deteriorated	Beige	Third	316	Positive	5.9
323	Wall	Ceramic	D	Deteriorated	Beige	Third	316	Positive	4.3
324	Wall	Ceramic	D	Deteriorated	Black	Third	316	Positive	4
325	Calibration							Positive	1.1
326	Calibration							Positive	1.1
327	Calibration							Positive	1.1
328	Wall	Ceramic	A	Deteriorated	Aqua	Third	317	Negative	0.3
329	Wall	Ceramic	B	Deteriorated	Aqua	Third	317	Negative	0.21
330	Wall	Ceramic	C	Deteriorated	Aqua	Third	317	Negative	0.2
331	Wall	Ceramic	D	Deteriorated	Aqua	Third	317	Negative	0.04
332	Wall	Ceramic	A	Deteriorated	Beige	Third	317 Rr	Positive	4.7
333	Wall	Ceramic	B	Deteriorated	Beige	Third	317 Rr	Positive	6
334	Wall	Ceramic	C	Deteriorated	Beige	Third	317 Rr	Positive	5.4
335	Wall	Ceramic	D	Deteriorated	Beige	Third	317 Rr	Positive	5.5
336	Wall	Ceramic	D	Deteriorated	Black	Third	317 Rr	Positive	4.4
337	Wall	Plaster	A	Deteriorated	Beige	Third	317 Rr	Negative	0.08
338	Wall	Plaster	A	Deteriorated	Green	Third	317 Rr	Negative	0.21
339	Door	Metal	D	Deteriorated	Green	Third	325 Elevator	Negative	0.29
340	Door Frame	Metal	D	Deteriorated	Green	Third	325 Elevator	Negative	0.15
341	Wall	Ceramic	D	Deteriorated	Green	Third	325 Elevator	Negative	0.6
342	Wall	Ceramic	D	Deteriorated	Green	Third	325 Elevator	Negative	0.9
343	Wall	Concrete	A	Deteriorated	Beige	Third	Southwest Stairs	Negative	0.18
344	Wall	Concrete	A	Deteriorated	Beige	Third	Southwest Stairs	Negative	0.18
345	Wall	Concrete	B	Deteriorated	Beige	Third	Southwest Stairs	Negative	0.12
346	Wall	Concrete	C	Deteriorated	Beige	Third	Southwest Stairs	Negative	0.16
347	Wall	Concrete	D	Deteriorated	Beige	Third	Southwest Stairs	Negative	0.14
348	Ceiling	Concrete	D	Deteriorated	Beige	Third	Southwest Stairs	Negative	0.19
349	Wall	Concrete	A	Deteriorated	Gray	Third	Southwest Stairs	Negative	0.25
350	Wall	Concrete	B	Deteriorated	Gray	Third	Southwest Stairs	Negative	0.23
351	Wall	Concrete	D	Deteriorated	Gray	Third	Southwest Stairs	Negative	0.19
352	Door	Metal	B	Deteriorated	Gray	Third	Southwest Stairs	Negative	0.03
353	Door	Metal	B	Deteriorated	Brown	Third	Southwest Stairs	Negative	0.08
354	Door Frame	Metal	B	Deteriorated	Green	Third	Southwest Stairs	Negative	0.02
355	Door Frame	Metal	B	Deteriorated	Beige	Third	Southwest Stairs	Negative	0.06
356	Door Frame	Metal	B	Deteriorated	Beige	Third	South Stairs	Negative	0.01
357	Door	Metal	B	Deteriorated	Brown	Third	South Stairs	Negative	0.06



Xrf Reading	Component	Substrate	Side	Condition	Color	Floor	Room	Results	Lead (Mg/Cm <sup>2</sup> )
358	Door	Metal	B	Deteriorated	Gray	Third	South Stairs	Negative	0.11
359	Wall	Concrete	A	Deteriorated	Gray	Third	South Stairs	Negative	0.09
360	Wall	Concrete	B	Deteriorated	Gray	Third	South Stairs	Negative	0.16
361	Wall	Concrete	C	Deteriorated	Gray	Third	South Stairs	Negative	0.07
362	Wall	Concrete	D	Deteriorated	Gray	Third	South Stairs	Negative	0.12
363	Wall	Concrete	D	Deteriorated	Beige	Third	South Stairs	Negative	0.1
364	Wall	Concrete	B	Deteriorated	Beige	Third	South Stairs	Negative	0.14
365	Wall	Concrete	C	Deteriorated	Beige	Third	South Stairs	Negative	0.07
366	Wall	Concrete	D	Deteriorated	Beige	Third	South Stairs	Negative	0.09
367	Calibration							Positive	1.1
368	Calibration							Positive	1.1
369	Calibration							Positive	1.1
370	Calibration							Positive	1.2
371	Calibration							Positive	1.2
372	Calibration							Positive	1.2
373	Wall	Concrete	A	Deteriorated	White	Fifth	500 Cubicle Area	Negative	0.15
374	Wall	Concrete	A	Deteriorated	Blue	Fifth	500 Cubicle Area	Negative	0.13
375	Window Trim	Metal	A	Deteriorated	Blue	Fifth	500 Cubicle Area	Negative	0.02
376	Window Trim	Metal	A	Deteriorated	Beige	Fifth	500 Cubicle Area	Negative	0.12
377	Stair 3 Door	Metal	B	Deteriorated	Brown	Fifth	500 Cubicle Area	Negative	0.15
378	Wall	Concrete	C	Deteriorated	Beige	Fifth	500 Cubicle Area	Negative	0.07
379	Wall	Concrete	C	Deteriorated	Green	Fifth	500 Cubicle Area	Negative	0.1
380	Window Trim	Concrete	C	Deteriorated	Blue	Fifth	500 Cubicle Area	Negative	0.05
381	Window Trim	Concrete	C	Deteriorated	Brown	Fifth	500 Cubicle Area	Negative	0.12
382	Wall	Concrete	D	Deteriorated	Beige	Fifth	500 Cubicle Area	Negative	0.16
383	Wall	Concrete	D	Deteriorated	Green	Fifth	500 Cubicle Area	Negative	0.07
384	Wall	Concrete	A	Deteriorated	Beige	Fifth	503	Negative	0.11
385	Wall	Concrete	A	Deteriorated	Orange	Fifth	503	Negative	0.06
386	Wall	Concrete	A	Deteriorated	Green	Fifth	503	Negative	0.04
387	Wall	Concrete	C	Deteriorated	Beige	Fifth	503	Negative	0.05
388	Wall	Concrete	C	Deteriorated	Green	Fifth	503	Negative	0.06
389	Wall	Concrete	D	Deteriorated	Beige	Fifth	503	Negative	0.06
390	Window Trim	Metal	C	Deteriorated	Green	Fifth	503	Negative	0.03
391	Window Trim	Metal	C	Deteriorated	Brown	Fifth	503	Negative	0.04
392	Door Frame	Metal	A	Deteriorated	Brown	Fifth	503	Negative	0.03
393	Wall	Concrete	A	Deteriorated	Blue	Fifth	509	Negative	0.01
394	Wall	Concrete	A	Deteriorated	Green	Fifth	509	Negative	0.09

Xrf Reading	Component	Substrate	Side	Condition	Color	Floor	Room	Results	Lead (Mg/Cm <sup>2</sup> )
395	Wall	Concrete	A	Deteriorated	Brown	Fifth	509	Negative	0.11
396	Balcony Casing	Metal	B	Deteriorated	Beige	Fifth	509	Negative	0.27
397	Wall	Concrete	C	Deteriorated	Blue	Fifth	509	Negative	0.02
398	Column	Concrete	C	Deteriorated	Blue	Fifth	509	Negative	0
399	Window Trim	Metal	C	Deteriorated	Brown	Fifth	509	Negative	0.06
400	Radiator	Metal	C	Deteriorated	Gray	Fifth	509	Negative	0
401	Radiator	Metal	C	Deteriorated	Gray	Fifth	509	Negative	0.01
402	Cabinet	Wood	B	Deteriorated	Beige	Fifth	509	Negative	0.05
403	Cabinet	Wood	B	Deteriorated	Beige	Fifth	509	Negative	0.28
404	Wall	Concrete	A	Deteriorated	Beige	Fifth	Nw Hallway	Negative	0.02
405	Wall	Ceramic	A	Intact	Gray	Fifth	Nw Hallway	Negative	0.9
406	Window Trim	Metal	A	Deteriorated	Beige	Fifth	Nw Hallway	Negative	0.01
407	Wall	Ceramic	A	Intact	Beige	Fifth	512a	Positive	5.2
408	Wall	Ceramic	B	Intact	Beige	Fifth	512a	Positive	5.7
409	Wall	Ceramic	C	Intact	Beige	Fifth	512a	Positive	8.7
410	Window Trim	Metal	B	Intact	Yellow	Fifth	512a	Negative	0.13
411	Pipe Chase Panel	Metal	B	Intact	Gray	Fifth	Nw Hallway	Negative	0.07
412	Wall	Ceramic	A	Intact	Gray	Fifth	517	Negative	0.8
413	Wall	Ceramic	B	Intact	Gray	Fifth	517	Negative	0.6
414	Column	Ceramic	D	Intact	Beige	Fifth	517	Positive	2.4
415	Window Trim	Metal	C	Intact	Gray	Fifth	517	Negative	0.06
416	Door Frame	Metal	A	Deteriorated	Gray	Fifth	517	Negative	0.03
417	Wall	Ceramic	A	Intact	Green	Fifth	523	Negative	0.11
418	Wall	Ceramic	C	Intact	Green	Fifth	523b	Negative	0.21
419	Wall	Ceramic	D	Intact	Green	Fifth	523b	Positive	2
420	Wall	Ceramic	D	Intact	Beige	Fifth	542a	Positive	5.5
421	Wall	Ceramic	C	Intact	Beige	Fifth	542a	Positive	6.1
422	Wall	Concrete	A	Intact	Beige	Fifth	550	Negative	0.15
423	Wall	Concrete	B	Intact	Beige	Fifth	550	Negative	0.18
424	Wall	Concrete	B	Deteriorated	Gray	Fifth	550	Negative	0.14
425	Wall	Concrete	C	Deteriorated	Beige	Fifth	550	Negative	0.13
426	Column	Concrete	C	Deteriorated	Beige	Fifth	550	Negative	0.26
427	Column	Concrete	D	Deteriorated	Green	Fifth	550	Negative	0.15
428	Cabinet	Wood	B	Deteriorated	Beige	Fifth	545	Negative	0
429	Cabinet	Wood	B	Deteriorated	Beige	Fifth	545	Negative	0.02
430	Wall	Concrete	A	Deteriorated	Blue	Fifth	545	Negative	0.13
431	Wall	Concrete	A	Deteriorated	Blue	Fifth	545	Negative	0.08

Xrf Reading	Component	Substrate	Side	Condition	Color	Floor	Room	Results	Lead (Mg/Cm <sup>2</sup> )
432	Service Elevator Door	Metal	B	Deteriorated	Green	Fifth	529	Negative	0.1
433	Service Elevator Door Frame	Metal	B	Deteriorated	Green	Fifth	529	Negative	0.09
434	Wall	Concrete	A	Deteriorated	Gray	Fifth	Nw Stair	Negative	0.06
435	Wall	Concrete	A	Deteriorated	White	Fifth	Nw Stair	Negative	0.08
436	Door	Metal	A	Deteriorated	White	Fifth	Nw Stair	Negative	0.04
437	Door Frame	Metal	A	Deteriorated	White	Fifth	Nw Stair	Negative	0.02
438	Wall	Concrete	A	Deteriorated	Beige	Third	312	Negative	0.04
439	Wall	Concrete	B	Deteriorated	Green	Third	312	Negative	0.07
440	Wall	Concrete	C	Deteriorated	Green	Third	312	Negative	0.19
441	Wall	Concrete	D	Deteriorated	Brown	Third	312	Negative	0.05
442	Window Trim	Metal	A	Deteriorated	Brown	Third	312	Negative	0.05
443	Wall	Ceramic	A	Intact	Green	Third	314	Negative	0.14
444	Wall	Ceramic	B	Intact	Green	Third	314	Negative	0.08
445	Wall	Ceramic	B	Intact	Dark Green	Third	314	Positive	1.5
446	Wall	Ceramic	C	Intact	Green	Third	314	Negative	0.05
447	Wall	Ceramic	C	Intact	Dark Green	Third	314	Positive	1.9
448	Wall	Ceramic	D	Intact	Dark Green	Third	314	Positive	1.8
449	Wall	Ceramic	D	Intact	Green	Third	314	Negative	0.14
450	Calibration							Positive	1.1
451	Calibration							Positive	1.1
452	Calibration							Positive	1.1
453	Wall	Concrete	A	Deteriorated	Beige	Third	304	Negative	0.01
454	Wall	Concrete	A	Deteriorated	Green	Third	304	Negative	0.04
455	Wall	Concrete	B	Deteriorated	Beige	Third	304	Negative	0.07
456	Wall	Concrete	B	Deteriorated	Green	Third	304	Negative	0.01
457	Wall	Concrete	C	Deteriorated	Beige	Third	304	Negative	0.05
458	Wall	Concrete	C	Deteriorated	Green	Third	304	Negative	0.04
459	Wall	Concrete	D	Deteriorated	Green	Third	304	Negative	0.03
460	Wall	Concrete	D	Deteriorated	Beige	Third	304	Negative	0.01
461	Window Trim	Metal	A	Deteriorated	Beige	Third	304	Negative	0.03
462	Door Frame	Metal	C	Deteriorated	Beige	Third	304	Negative	0.07
463	Wall	Concrete	A	Deteriorated	Beige	Third	324	Negative	0.04
464	Wall	Concrete	B	Deteriorated	Beige	Third	324	Negative	0.11
465	Wall	Concrete	C	Deteriorated	Green	Third	324	Negative	0.06
466	Wall	Concrete	C	Deteriorated	Green	Third	324	Negative	0.04



Xrf Reading	Component	Substrate	Side	Condition	Color	Floor	Room	Results	Lead (Mg/Cm <sup>2</sup> )
467	Window Trim	Metal	A	Deteriorated	Beige	Third	324	Negative	0.03
468	Door Frame	Metal	C	Deteriorated	Green	Third	324	Negative	0.05
469	Window Trim	Metal	A	Deteriorated	Green	Third	Elevator	Negative	0.18
470	Wall	Concrete	B	Deteriorated	Blue	Third	Elevator	Negative	0.05
471	Wall	Concrete	B	Deteriorated	Beige	Third	Elevator	Negative	0.03
472	Wall	Concrete	B	Deteriorated	Orange,	Third	Elevator	Negative	0.04
473	Elevator Door	Metal	D	Deteriorated	Green	Third	Elevator	Negative	0.4
474	Elevator Door Frame	Metal	D	Deteriorated	Green	Third	Elevator	Negative	0.3
475	Wall	Concrete	C	Deteriorated	Beige	Third	Elevator Lobby	Negative	0.03
476	340 Door	Metal	B	Deteriorated	Brown	Third	Hallway Adj To 340	Negative	0.03
477	Wall	Concrete	B	Deteriorated	Beige	Third	Hallway Adj To 340	Negative	0.16
478	Wall	Concrete	D	Deteriorated	Beige	Third	Hallway Adj To 340	Negative	0.09
479	342d Door	Metal	D	Deteriorated	Brown	Third	Hallway Adj To 340	Negative	0.05
480	342d Door Frame	Metal	D	Deteriorated	Beige	Third	Hallway Adj To 340	Negative	0.05
481	Wall	Concrete	A	Deteriorated	Beige	Third	341	Negative	0.03
482	Wall	Concrete	C	Deteriorated	Beige	Third	341	Negative	0.04
483	Wall	Concrete	D	Deteriorated	Beige	Third	341	Negative	0.07
484	Balcony Window Case	Metal	D	Deteriorated	White	Third	341	Negative	0.1
485	Window Trim	Metal	C	Deteriorated	White	Third	341	Negative	0.05
486	Cabinet	Wood	B	Deteriorated	White	Third	341	Negative	0
487	Cabinet	Wood	B	Deteriorated	Blue	Third	341	Negative	0.02
488	Wall	Concrete	A	Deteriorated	Beige	Third	Hallway Adj 348	Negative	0.1
489	Wall	Concrete	C	Deteriorated	Beige	Third	Hallway Adj 348	Negative	0.08
490	Se Door	Metal	C	Deteriorated	Brown	Third	Hallway Adj 348	Negative	0.08
491	Se Door Frame	Metal	C	Deteriorated	Beige	Third	Hallway Adj 348	Negative	0.01
492	Wall	Concrete	A	Deteriorated	Beige	Third	347	Negative	0.05
493	Wall	Concrete	B	Deteriorated	Beige	Third	347	Negative	0.03
494	Wall	Concrete	C	Deteriorated	Beige	Third	347	Negative	0.04
495	Wall	Concrete	D	Deteriorated	Beige	Third	347	Negative	0.15
496	Wall	Concrete	D	Deteriorated	Green	Third	347	Negative	0.07
497	Window Trim	Metal	C	Deteriorated	Green	Third	347	Negative	0.11
498	Door Frame	Metal	A	Deteriorated	Beige	Third	347	Negative	0.04
499	Calibration							Positive	1.2
500	Calibration							Positive	1.2

Xrf Reading	Component	Substrate	Side	Condition	Color	Floor	Room	Results	Lead (Mg/Cm <sup>2</sup> )
501	Calibration							Positive	1.1
502	Calibration							Positive	1.1
503	Calibration							Positive	1.2
504	Calibration							Positive	1.2
505	Wall	Concrete	A	Deteriorated	White	Second	205	Negative	0.09
506	Wall	Concrete	B	Deteriorated	White	Second	205	Negative	0.14
507	Wall	Concrete	C	Deteriorated	White	Second	205	Negative	0.07
508	Wall	Concrete	D	Deteriorated	White	Second	205	Negative	0.11
509	Column	Concrete	C	Deteriorated	White	Second	205	Negative	0
510	Chair Rail	Wood	C	Deteriorated	Brown	Second	205	Negative	0.01
511	Window Trim	Metal	C	Deteriorated	Brown	Second	205	Negative	0.01
512	Door Frame	Metal	A	Deteriorated	Brown	Second	205	Negative	0.03
513	Baseboard	Stone	A	Deteriorated	Black	Second	205	Negative	0
514	Wall	Ceramic	A	Deteriorated	Green	Second	214	Negative	0.09
515	Wall	Ceramic	B	Deteriorated	Green	Second	214	Negative	0.1
516	Wall	Ceramic	C	Deteriorated	Green	Second	214	Negative	0.13
517	Wall	Ceramic	D	Deteriorated	Green	Second	214	Negative	0.17
<b>518</b>	<b>Wall</b>	<b>Ceramic</b>	<b>D</b>	<b>Deteriorated</b>	<b>Dark Green</b>	<b>Second</b>	<b>214</b>	<b>Positive</b>	<b>2</b>
<b>519</b>	<b>Column</b>	<b>Ceramic</b>	<b>A</b>	<b>Deteriorated</b>	<b>Dark Green</b>	<b>Second</b>	<b>214</b>	<b>Positive</b>	<b>1.6</b>
520	Column	Ceramic	A	Deteriorated	Green	Second	214	Negative	0.09
521	Window Trim	Metal	A	Deteriorated	Beige	Second	214	Negative	0.01
522	Door Frame	Metal	C	Deteriorated	Beige	Second	214	Negative	0.02
523	Door Frame	Metal	C	Deteriorated	Beige	Second	214	Negative	0.04
524	Wall	Concrete	A	Deteriorated	Beige	Second	211	Negative	0
525	Wall	Concrete	B	Deteriorated	Beige	Second	211	Negative	0.1
526	Wall	Concrete	C	Deteriorated	Beige	Second	211	Negative	0.22
527	Wall	Concrete	D	Deteriorated	Beige	Second	211	Negative	0.01
528	Cabinet	Wood	D	Deteriorated	Brown	Second	211	Negative	0.02
529	Cabinet	Wood	D	Deteriorated	Brown	Second	211	Negative	0
530	Column	Wood	C	Deteriorated	Beige	Second	211	Negative	0
531	Chair Rail	Wood	C	Deteriorated	Brown	Second	211	Negative	0.6
532	Window Trim	Metal	C	Deteriorated	Brown	Second	211	Negative	0.04
533	Window Trim	Metal	C	Deteriorated	Green	Second	211	Negative	0.03
534	Door Frame	Metal	A	Deteriorated	Green	Second	211	Negative	0.06
<b>535</b>	<b>Wall</b>	<b>Concrete</b>	<b>B</b>	<b>Deteriorated</b>	<b>Green</b>	<b>Second</b>	<b>211</b>	<b>Positive</b>	<b>1.9</b>
536	Wall	Concrete	B	Deteriorated	Green	Second	211	Negative	0.03
537	Wall	Concrete	A	Deteriorated	Gray	Second	Center Stair	Negative	0.18

Xrf Reading	Component	Substrate	Side	Condition	Color	Floor	Room	Results	Lead (Mg/Cm <sup>2</sup> )
538	Wall	Concrete	A	Deteriorated	White	Second	Center Stair	Negative	0.11
539	Wall	Concrete	A	Deteriorated	Beige	Second	Elevator Lobby 1	Negative	0.08
540	Wall	Concrete	B	Deteriorated	Beige	Second	Elevator Lobby 1	Negative	0.05
541	Elevator Door	Metal	D	Deteriorated	Green	Second	Elevator Lobby 1	Negative	0.17
542	Elevator Door Frame	Metal	D	Deteriorated	Green	Second	Elevator Lobby 1	Negative	0.14
543	Window Trim	Metal	A	Deteriorated	White	Second	Elevator Lobby 1	Negative	0.03
544	Door	Metal	D	Deteriorated	Brown	Second	Elevator Lobby 1	Negative	0.08
545	Wall	Concrete	A	Deteriorated	Beige	Second	242a	Negative	0.02
546	Wall	Concrete	B	Deteriorated	Beige	Second	242a	Negative	0.01
547	Wall	Concrete	C	Deteriorated	Green	Second	242a	Negative	0.02
548	Wall	Concrete	D	Deteriorated	Beige	Second	242a	Negative	0.05
549	Window Trim	Metal	A	Deteriorated	Brown	Second	242a	Negative	0.03
550	Wall	Concrete	B	Deteriorated	Beige	Second	Sw Stair	Negative	0.12
551	Wall	Concrete	B	Deteriorated	Gray	Second	Sw Stair	Negative	0.3
552	Door	Concrete	A	Deteriorated	Beige	Second	Sw Stair	Negative	0.07
553	Wall	Concrete	A	Deteriorated	Beige	Second	261	Negative	0.06
554	Wall	Concrete	A	Deteriorated	Green	Second	261	Negative	0.16
555	Wall	Concrete	B	Deteriorated	Green	Second	261	Negative	0.06
556	Wall	Concrete	B	Deteriorated	Beige	Second	261	Negative	0.24
557	Wall	Concrete	C	Deteriorated	Beige	Second	261	Negative	0.06
558	Wall	Concrete	A	Deteriorated	Blue	First	149	Negative	0.05
559	Wall	Concrete	B	Deteriorated	Blue	First	149	Negative	0.22
560	Wall	Concrete	C	Deteriorated	Blue	First	149	Negative	0.08
561	Wall	Concrete	D	Deteriorated	Blue	First	149	Negative	0.09
562	Window Trim	Metal	C	Deteriorated	Brown	First	149	Negative	0
563	Door Frame	Metal	A	Deteriorated	Brown	First	149	Negative	0.07
564	Wall	Concrete	A	Deteriorated	Beige	First	141	Negative	0.07
565	Wall	Concrete	C	Deteriorated	Beige	First	141	Negative	0.2
566	Wall	Concrete	D	Deteriorated	Beige	First	141	Negative	0.04
567	Cabinet	Wood	B	Deteriorated	Beige	First	141	Negative	0.02
568	Cabinet	Wood	B	Deteriorated	Beige	First	141	Negative	0.08
569	Balcony Window Trm	Metal	B	Deteriorated	Beige	First	141	Negative	0.06
570	Wall	Concrete	A	Deteriorated	Beige	First	144e	Negative	0.04
571	Wall	Concrete	A	Deteriorated	Beige	First	144e	Negative	0.06
572	Wall	Concrete	B	Deteriorated	Beige	First	144e	Negative	0.03
573	Wall	Concrete	C	Deteriorated	Beige	First	144e	Negative	0.05

Xrf Reading	Component	Substrate	Side	Condition	Color	Floor	Room	Results	Lead (Mg/Cm <sup>2</sup> )
574	Wall	Concrete	D	Deteriorated	Beige	First	144e	Negative	0.1
575	Window Trim	Metal	D	Deteriorated	Beige	First	144e	Negative	0.09
576	139 Door Frame	Metal	C	Deteriorated	Beige	First	Hall Adj 139	Negative	0.02
577	Wall	Ceramic	A	Deteriorated	Gray	First	Elevator Lobby 2	Positive	8.2
578	Wall	Ceramic	A	Deteriorated	Green	First	Elevator Lobby 2	Positive	8.8
579	Wall	Concrete	A	Deteriorated	Green	First	128	Negative	0.01
580	Wall	Concrete	B	Deteriorated	Green	First	128	Negative	0
581	Wall	Concrete	C	Deteriorated	Green	First	128	Negative	0.01
582	Wall	Concrete	D	Deteriorated	Green	First	128	Negative	0.03
583	Window Trim	Metal	A	Deteriorated	Green	First	128	Negative	0.04
584	Window Trim	Metal	A	Deteriorated	Brown	First	128	Negative	0.04
585	Door Frame	Metal	C	Deteriorated	Brown	First	128	Negative	0.02
586	Door Frame	Metal	B	Deteriorated	White	First	128	Negative	0
587	Wall	Concrete	A	Deteriorated	Beige	First	Hall Adj 163e	Negative	0.06
588	Wall	Concrete	B	Deteriorated	Beige	First	Hall Adj 163e	Negative	0.15
589	Wall	Concrete	C	Deteriorated	Beige	First	Hall Adj 163e	Negative	0.12
590	Window Trim	Metal	B	Deteriorated	Beige	First	Hall Adj 163e	Negative	0.01
591	163e Door Frame	Metal	A	Deteriorated	Beige	First	Hall Adj 163e	Negative	0.01
592	Wall	Concrete	A	Deteriorated	Beige	First	109	Negative	0.13
593	Wall	Concrete	B	Deteriorated	Beige	First	109	Negative	0.15
594	Wall	Concrete	C	Deteriorated	Beige	First	109	Negative	0.07
595	Wall	Concrete	D	Deteriorated	Beige	First	109	Negative	0.12
596	Wall	Concrete	D	Deteriorated	Green	First	109	Negative	0.1
597	Window Trim	Metal	C	Deteriorated	Green	First	109	Negative	0.03
598	Door Frame	Metal	A	Deteriorated	Beige	First	109	Negative	0.09
599	Wall	Concrete	A	Deteriorated	Yellow	First	101	Negative	0.16
600	Wall	Concrete	B	Deteriorated	Yellow	First	101	Negative	0.27
601	Calibration							Positive	1.2
602	Calibration							Positive	1.2
603	Calibration							Positive	1.1
604	Calibration							Positive	1.1
605	Calibration							Positive	1.1
606	Calibration							Positive	1.2
607	Wall	Plaster	A	Deteriorated	Beige	Second	206	Negative	0.05
608	Wall	Plaster	C	Deteriorated	Beige	Second	206	Negative	0.02
609	Wall	Plaster	C	Deteriorated	Beige	Second	206	Negative	0.08



Xrf Reading	Component	Substrate	Side	Condition	Color	Floor	Room	Results	Lead (Mg/Cm <sup>2</sup> )
610	Wall	Plaster	D	Deteriorated	Beige	Second	206	Negative	0.02
611	Radiator Cover	Metal	B	Deteriorated	Tan	Second	206	Negative	0.01
612	Window	Metal	A	Deteriorated	Beige	Second	206	Negative	0.02
613	Window Frame	Metal	A	Deteriorated	Beige	Second	206	Negative	0.01
614	Ceiling	Plaster	A	Deteriorated	Beige	Second	206	Negative	0.04
615	Baseboard	Terrazzo	A	Deteriorated	Black	Second	206	Negative	0
616	Door Frame	Metal	C	Deteriorated	Tan	Second	206	Negative	0.01
617	Wall	Plaster	A	Deteriorated	Beige	Second	242e	Negative	0.04
618	Wall	Plaster	B	Deteriorated	Beige	Second	242e	Negative	0.02
619	Wall	Plaster	C	Deteriorated	Beige	Second	242e	Negative	0.01
620	Wall	Plaster	D	Deteriorated	Beige	Second	242e	Negative	0.02
621	Ceiling	Plaster	D	Deteriorated	Beige	Second	242e	Negative	0.07
622	Door Frame	Metal	C	Deteriorated	Tan	Second	242e	Negative	0.02
623	Door Frame	Metal	C	Deteriorated	Tan	Second	242e	Negative	0.03
624	Window	Metal	A	Deteriorated	Tan	Second	242e	Negative	0.06
625	Window Frame	Metal	A	Deteriorated	Tan	Second	242e	Negative	0.08
626	Window Frame	Metal	C	Deteriorated	Beige	First	160	Negative	0.04
627	Window Frame	Metal	C	Deteriorated	Beige	First	160	Negative	0.01
628	Window	Metal	A	Deteriorated	Beige	First	160	Negative	0.07
629	Window Frame	Metal	A	Deteriorated	Beige	First	160	Negative	0.04
630	Wall	Metal	A	Deteriorated	Blue	First	160	Negative	0.07
631	Wall	Plaster	A	Deteriorated	Blue	First	160	Negative	0.35
632	Wall	Plaster	B	Deteriorated	Blue	First	160	Negative	0.06
633	Wall	Plaster	C	Deteriorated	Blue	First	160	Negative	0.03
634	Wall	Plaster	D	Deteriorated	Blue	First	160	Negative	0.03
635	Ceiling	Plaster	D	Deteriorated	Beige	First	160	Negative	0.03
636	Door Frame	Metal	D	Deteriorated	Beige	First	160	Negative	0.08
637	Door Frame	Metal	B	Deteriorated	Tan	First	141b	Negative	0.08
638	Door	Metal	B	Deteriorated	Tan	First	141b	Negative	0.12
639	Window	Metal	D	Deteriorated	Beige	First	141b	Negative	0.4
640	Window Frame	Metal	D	Deteriorated	Beige	First	141b	Negative	0.09
641	Window Frame	Metal	D	Deteriorated	Beige	First	159a	Negative	0.01
642	Window	Metal	D	Deteriorated	Beige	First	159a	Negative	0.04
643	Wall	Plaster	A	Deteriorated	Beige	First	159a	Negative	0.06
644	Wall	Plaster	B	Deteriorated	Beige	First	159a	Negative	0.11
645	Wall	Plaster	C	Deteriorated	Beige	First	159a	Negative	0.04

Xrf Reading	Component	Substrate	Side	Condition	Color	Floor	Room	Results	Lead (Mg/Cm <sup>2</sup> )
646	Wall	Plaster	D	Deteriorated	Beige	First	159a	Negative	0.04
647	Door	Plaster	C	Deteriorated	Beige	First	159a	Negative	0.13
648	Door	Metal	C	Deteriorated	Beige	First	159a	Negative	0.12
649	Door	Metal	C	Deteriorated	Green	First	159a	Negative	0.13
650	Door Frame	Metal	C	Deteriorated	Green	First	159a	Negative	0.13
651	Door Frame	Metal	C	Deteriorated	Beige	First	159a	Negative	0.16
652	Radiator Cover	Metal	D	Deteriorated	Gray	First	159a	Negative	0
653	Window Frame	Metal	A	Deteriorated	Beige	First	115	Negative	0.04
654	Window Frame	Metal	A	Deteriorated	Beige	First	115	Negative	0.08
655	Window Frame	Metal	B	Deteriorated	Beige	First	115	Negative	0.04
656	Window Frame	Metal	B	Deteriorated	Beige	First	115	Negative	0.09
657	Door Frame	Metal	A	Deteriorated	Beige	First	115	Negative	0.01
658	Door Frame	Metal	A	Deteriorated	Beige	First	122b	Negative	0.01
659	Door Frame	Metal	A	Deteriorated	Beige	First	122b	Negative	0.02
660	Wall	Plaster	A	Deteriorated	Blue	First	122b	Negative	0.19
661	Wall	Plaster	B	Deteriorated	Blue	First	122b	Negative	0.12
662	Wall	Plaster	C	Deteriorated	Blue	First	122b	Negative	0.11
663	Wall	Plaster	D	Deteriorated	Blue	First	122b	Negative	0.24
664	Ceiling	Plaster	D	Deteriorated	Beige	First	122b	Negative	0.1
665	Caging	Metal	A	Deteriorated	Beige	First	Northwest Hallway	Negative	0
666	Caging	Metal	B	Deteriorated	Beige	First	North Hallway	Negative	0
667	Caging	Metal	B	Deteriorated	Beige	First	North Hallway	Negative	0
668	Caging	Metal	B	Deteriorated	Beige	First	North Hallway	Negative	0
669	Calibration							Positive	1.1
670	Calibration							Positive	1.1
671	Calibration							Positive	1.2
672	Calibration							Positive	1.2
673	Calibration							Positive	1.1
674	Calibration							Positive	1.1
675	South Exterior Door	Metal	C	Deteriorated	White	Outside	Front Of Building	Positive	2.3
676	South Exterior Door Frame	Metal	C	Deteriorated	White	Outside	Front Of Building	Positive	2.3
677	Wall	Wood	C	Deteriorated	White	Outside	Apparel Shop Side	Positive	12.8
678	Door Frame	Wood	C	Deteriorated	White	Outside	Apparel Shop Side	Positive	9.2
679	Cage Door	Wood	C	Deteriorated	White	Outside	Apparel Shop Side	Negative	0.01

Xrf Reading	Component	Substrate	Side	Condition	Color	Floor	Room	Results	Lead (Mg/Cm <sup>2</sup> )
680	Door	Wood	C	Deteriorated	White	Outside	Adj To Lobby	Positive	2.3
681	Door Frame	Metal	C	Deteriorated	White	Outside	Adj To Lobby	Positive	1.2
682	Nw Door	Metal	C	Deteriorated	White	Outside	Adj To Lobby	Positive	2
683	Nw Door Frame	Metal	C	Deteriorated	White	Outside	Adj To Lobby	Positive	2
684	Bench	Wood	D	Deteriorated	Green	Outside	Adj To Lobby	Positive	9
685	Railing	Metal	D	Deteriorated	Green	Outside	Adj To Lobby	Positive	4.8
686	Column	Metal	D	Deteriorated	Gray	Outside	Trailer Side	Negative	0
687	Column	Metal	D	Deteriorated	White	Outside	Loading Dock	Positive	4.9
688	Column	Metal	A	Deteriorated	White	Outside	Loading Dock	Negative	0.14
689	Column	Metal	A	Deteriorated	White	Outside	Loading Dock	Positive	5.7
690	Railing	Metal	B	Deteriorated	White	Outside	Loading Dock	Positive	3.5
691	Lintel	Metal	C	Deteriorated	Red	Outside	Front Of Building	Positive	1.1
692	Lintel	Metal	C	Deteriorated	Red	Outside	Front Of Building	Positive	1.1
693	Lintel	Metal	C	Deteriorated	Red	Outside	Front Of Building	Positive	2.1
694	Wall	Plaster	A	Deteriorated	Beige	B1	B100	Negative	0.03
695	Wall	Plaster	B	Deteriorated	Beige	B1	B100	Negative	0.03
696	Wall	Plaster	C	Deteriorated	Beige	B1	B100	Negative	0.14
697	Wall	Plaster	D	Deteriorated	Beige	B1	B100	Negative	0.08
698	Door	Metal	B	Deteriorated	Brown	B1	B100	Negative	0.12
699	Door Frame	Metal	B	Deteriorated	Brown	B1	B100	Negative	0.02
700	Window Frame	Metal	C	Deteriorated	Brown	B1	B100	Negative	0.01
701	Window	Metal	C	Deteriorated	Brown	B1	B100	Negative	0.01
702	Ceiling	Plaster	A	Deteriorated	White	B1	B100	Negative	0.07
703	Door	Metal	A	Deteriorated	Green	B1	B100	Positive	1.9
704	Door	Metal	A	Deteriorated	Green	B1	B100	Positive	1.4
705	Radiator Cover	Metal	A	Deteriorated	Beige	B1	B100	Negative	0
706	Radiator Cover	Metal	A	Deteriorated	Gray	B1	B100	Negative	0
707	Wall	Plaster	A	Deteriorated	Gray	B1	North Hallway	Negative	0.03
708	Wall	Plaster	A	Deteriorated	Beige	B1	North Hallway	Negative	0.03
709	Wall	Plaster	B	Deteriorated	Beige	B1	North Hallway	Negative	0.06
710	Wall	Plaster	C	Deteriorated	Beige	B1	North Hallway	Negative	0.05
711	Wall	Plaster	D	Deteriorated	Beige	B1	North Hallway	Negative	0.02
712	Wall	Ceramic	A	Deteriorated	Gray	B1	North Hallway	Negative	0.6
713	Wall	Ceramic	B	Deteriorated	Gray	B1	North Hallway	Negative	0.8
714	Wall	Ceramic	C	Deteriorated	Gray	B1	North Hallway	Negative	0.7
715	Wall	Ceramic	D	Deteriorated	Gray	B1	North Hallway	Negative	0.8
716	Wall	Ceramic	B	Deteriorated	Beige	B1	B106e	Positive	5.7

Xrf Reading	Component	Substrate	Side	Condition	Color	Floor	Room	Results	Lead (Mg/Cm <sup>2</sup> )	
717	Wall	Ceramic	C	Deteriorated	Beige	B1	B106e	Negative	0.1	
718	Wall	Ceramic	C	Deteriorated	Beige	B1	B106e	Negative	0.05	
719	Wall	Ceramic	C	Deteriorated	Beige	B1	B106e	Positive	5.4	
720	Wall	Ceramic	C	Deteriorated	Black	B1	B106e	Positive	6.5	
721	Wall	Terracota	A	Deteriorated	Beige	B1	B119	Negative	0.09	
722	Wall	Terracota	A	Deteriorated	Beige	B1	B119	Negative	0.01	
723	Wall	Terracota	C	Deteriorated	Beige	B1	B119	Negative	0.03	
724	Wall	Terracota	D	Deteriorated	Beige	B1	B119	Negative	0	
725	Door Frame	Terracota	A	Deteriorated	Tan	B1	B119	Negative	0.03	
726	Door Frame	Terracota	A	Deteriorated	Brown	B1	B119	Negative	0.15	
727	Wall	Plaster	A	Deteriorated	Pink	B1	B125n	Negative	0.12	
728	Wall	Plaster	B	Deteriorated	Pink	B1	B125n	Negative	0.1	
729	Wall	Plaster	C	Deteriorated	Pink	B1	B125n	Negative	0.24	
730	Wall	Plaster	D	Deteriorated	Pink	B1	B125n	Negative	0.15	
731	Wall	Ceramic	A	Intact	Beige	B1	B125n	Positive	5.2	
732	Wall	Ceramic	B	Intact	Beige	B1	B125n	Positive	5.4	
733	Wall	Ceramic	B	Intact	Black	B1	B125n	Positive	5.5	
734	Calibration								Positive	1.1
735	Calibration								Positive	1.1
736	Calibration								Positive	1.0
737	Calibration								Positive	1.1
738	Calibration								Positive	1.1
739	Calibration								Positive	1.1
740	Wall	Ceramic	A	Intact	Light Green	Basement	B102e	Negative	0.18	
741	Wall	Ceramic	B	Intact	Dark Green	Basement	B102e	Positive	2	
742	Wall	Ceramic	B	Intact	Beige	Basement	B106d	Positive	5.6	
743	Wall	Ceramic	A	Intact	Black	Basement	B106d	Positive	6.7	
744	Wall	Ceramic	B	Intact	Gray	Basement	B117	Negative	0.12	
745	Incerator Wall	Ceramic	D	Intact	Beige	Basement	B117	Negative	0	
746	Wall	Concrete	A	Deteriorated	Beige	Basement	B123	Negative	0.11	
747	Wall	Concrete	A	Deteriorated	Gray	Basement	B123	Negative	0.18	
748	Wood Panel	Wood	A	Deteriorated	Red	Basement	B123	Negative	0.09	
749	Duct Work	Metal	A	Deteriorated	Beige	Basement	B123	Negative	0.07	
750	Cage	Metal	A	Deteriorated	Beige	Basement	B125b Hallway	Negative	0	
751	Ceiling	Cork	Upper	Deteriorated	Beige	Basement	125p	Negative	0	
752	Ceiling	Cork	Upper	Deteriorated	Beige	Basement	125p	Negative	0.6	
753	Ceiling	Cork	Upper	Deteriorated	Beige	Basement	125p	Negative	0.01	
754	Wall	Concrete	A	Deteriorated	Beige	Basement	B141b	Negative	0.07	

Xrf Reading	Component	Substrate	Side	Condition	Color	Floor	Room	Results	Lead (Mg/Cm <sup>2</sup> )
755	Wall	Concrete	B	Deteriorated	Beige	Basement	B141	Negative	0.05
756	Column	Concrete	C	Deteriorated	Beige	Basement	B141	Negative	0.03
757	Wall	Wood	C	Deteriorated	White	First	North Stair Entrance	Positive	10.4
758	Window Trim	Wood	C	Deteriorated	White	First	North Stair Entrance	Positive	12.9
759	Window	Concrete	C	Deteriorated	White	B2	Boiler Area	Negative	0.15
760	Window	Concrete	C	Deteriorated	White	B2	Boiler Area	Negative	0.27
761	Door Frame	Metal	A	Deteriorated	White	B2	Boiler Area	Negative	0.01
762	Pipe	Metal	A	Deteriorated	Yellow	B2	Boiler Area	Positive	1.3
763	Door	Metal	A	Deteriorated	Brown	B2	B210	Negative	0.01
764	Door Frame	Metal	A	Deteriorated	Brown	B2	B210	Negative	0.02
765	Wall	Concrete	A	Deteriorated	Gray	B2	B210	Negative	0.19
766	Wall	Concrete	A	Deteriorated	Green	B2	B212	Positive	3
767	Wall	Concrete	A	Deteriorated	Red	B2	B212	Negative	0.4
768	Calibration							Positive	1.1
769	Calibration							Positive	1.1
770	Calibration							Positive	1.1





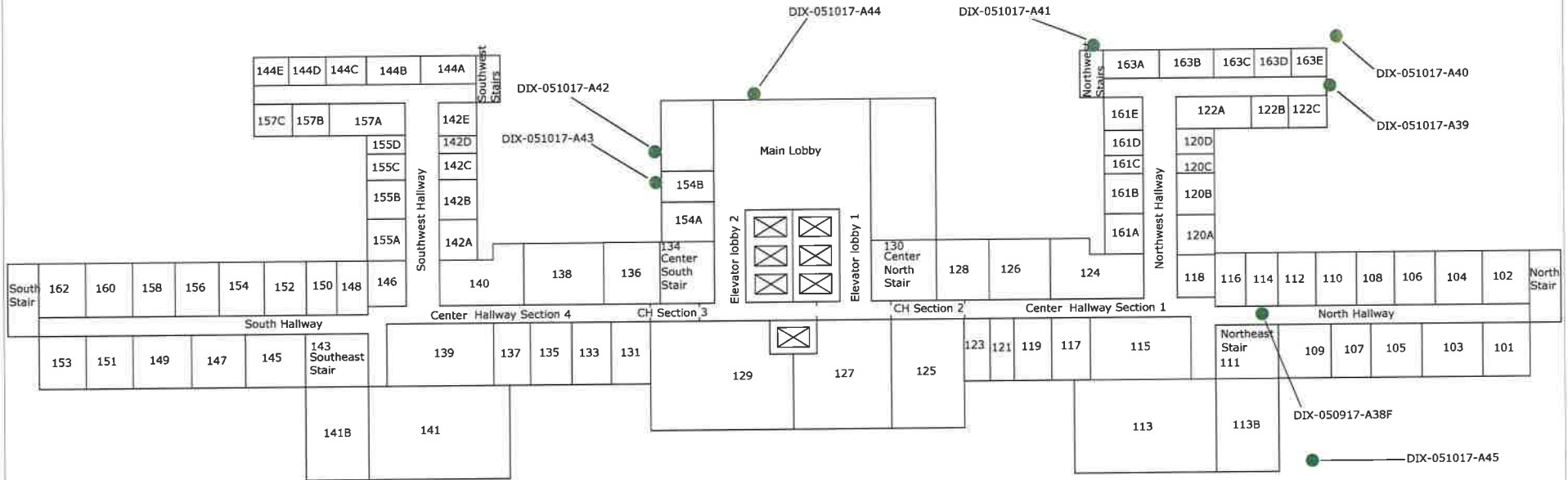
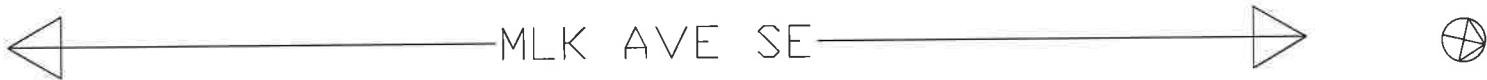
## Appendix D: LBP Component Quantities

Floor	Room	Material type	Quantity (Approximate)	Units
1	148	Ceramic wall tiles 4x4 Beige & Black	300	SF
1	150	Dark green 4x4 tile	30	SF
1	137 Rest Room	Ceramic wall tiles 4x4 Beige & Black	200	SF
1	139 Rest Room	Ceramic wall tiles 4x4 Beige & Black	200	SF
1	142A	Ceramic wall tiles 4x4 Beige & Black	600	SF
1	155A/155B	Ceramic wall tiles 4x4 Beige & Black	700	SF
1	Elevator lobby 1 and 2	Grey & Green 2x2 tiles	1500	SF
2	223	Dark grey 4x4 tile	20	SF
2	235	Dark grey 4x4 tile	30	SF
2	248	Dark green 4x4 tiles	30	SF
2	215A	Ceramic wall tiles 4x4 Beige & Black	700	SF
2	219 Rest Room	Ceramic wall tiles 4x4 Beige & Black	200	SF
2	220A/220B	Ceramic wall tiles 4x4 Beige & Black	600	SF
2	234 Rest Room	Ceramic wall tiles 4x4 Beige & Black	200	SF
2	240A	Ceramic wall tiles 4x4 Beige & Black	600	SF
2	245a/245B	Ceramic wall tiles 4x4 Beige & Black	700	SF
2	246C	Ceramic wall tiles 4x4 Beige & Black	300	SF
3	314	Green 4x4 tile	150	SF
3	314	Dark green 4x4 tile	32	SF
3	316	Ceramic wall tile 4x4 Beige & Black	300	SF
3	317 Rest Room	Ceramic wall tile 4x4 Beige & Black	250	SF
3	320A/320B	Ceramic wall tile 4x4 Beige & Black	600	SF
3	321A	Ceramic wall tile 4x4 Beige & Black	700	SF
3	332 Rest Room	Ceramic wall tile 4x4 Beige & Black	250	SF
3	337 Rest Room	Ceramic wall tile 4x4 Beige & Black	250	SF
3	340A	Ceramic wall tile 4x4 Beige & Black	600	SF
3	342A/342B	Ceramic wall tile 4x4 Beige & Black	700	SF
3	346C	Ceramic wall tile 4x4 Beige & Black	300	SF
4	420A	Ceramic wall tile 4x4 Beige & Black	300	SF
4	416	Ceramic wall tile 4x4 Beige & Black	300	SF
4	413A	Blue Wood Shelving	250	SF
4	420B	Ceramic wall tile 4x4 Beige & Black	300	SF
4	421A	Ceramic wall tile 4x4 Beige & Black	700	SF
4	444A	Ceramic wall tile 4x4 Beige & Black	600	SF
4	446A	Ceramic wall tile 4x4 Beige & Black	300	SF
4	446B	Ceramic wall tile 4x4 Beige & Black	300	SF
5	517	Light grey wall tile 4x4	100	SF
5	523	Green 4x4 tile	250	SF
5	533	Green 4x4 tile	100	SF
5	534	Ceramic wall tile 4x4 Beige & Black	200	SF
5	540	Ceramic wall tile 4x4 Beige & Black	700	SF
5	512A/512B	Ceramic wall tile 4x4 Beige & Black	600	SF
5	514A	Ceramic wall tile 4x4 Beige & Black	700	SF
5	515 Rest Room	Ceramic wall tile 4x4 Beige & Black	200	SF
5	522 Rest Room	Ceramic wall tile 4x4 Beige & Black	200	SF
5	542A/542B	Ceramic wall tile 4x4 Beige & Black	700	SF
6	601	Ceramic wall tile 4x4 Beige & Black	300	SF
6	608A	Ceramic wall tile 4x4 Beige & Black	700	SF
6	611A	Ceramic wall tile 4x4 Beige & Black	300	SF

6	611B	Ceramic wall tile 4x4 Beige & Black	300	SF
6	616 RR	Ceramic wall tile 4x4 Beige & Black	150	SF
6	630 RR	Ceramic wall tile 4x4 Beige & Black	150	SF
6	637A RR	Ceramic wall tile 4x4 Beige & Black	100	SF
6	637C RR	Ceramic wall tile 4x4 Beige & Black	100	SF
B1	125R	Ceramic wall tiles 4x4 Beige & Black	200	SF
B1	B 102C	Ceramic wall tiles 4x4 Beige & Black	150	SF
B1	B 106A	Ceramic wall tiles 4x4 Beige & Black	150	SF
B1	B 106E	Ceramic wall tiles 4x4 Beige & Black	300	SF
B1	B 108B	Ceramic wall tiles 4x4 Beige & Black	100	SF
B1	B 108B	Ceramic wall tiles 4x4 Beige & Black	200	SF
B1	B 130C	Ceramic wall tiles 4x4 Beige & Black	200	SF
B1	B 133C	Ceramic wall tiles 4x4 Beige & Black	250	SF
B1	B100	Green Metal vault door	50	SF
B2	Adjacent to Old Engineer Office	Yellow Metal Pipe	500	LF
B2	Adjacent to Old Engineer Office	Concrete Column Green Paint	100	LF
B2	Adjacent to Old Engineer Office	Concrete Column Green Paint	7	EACH
Exterior	Around the Buildings	Rusted Metal Lintel, Unknown Color	8	EACH
Exterior	Exterior	Metal door	600	SF
Exterior	North Railing	Metal Railing	250	SF
Exterior	South Appareal shop door	Wooden walls, door & metal cage	200	SF
Exterior	South Appareal shop door	White Concrete ceiling	400	SF
Exterior	South of building	Green Metal Railing		



## Appendix E: Floor Plans



● SAMPLE LOCATION  
 \* NOT TO SCALE

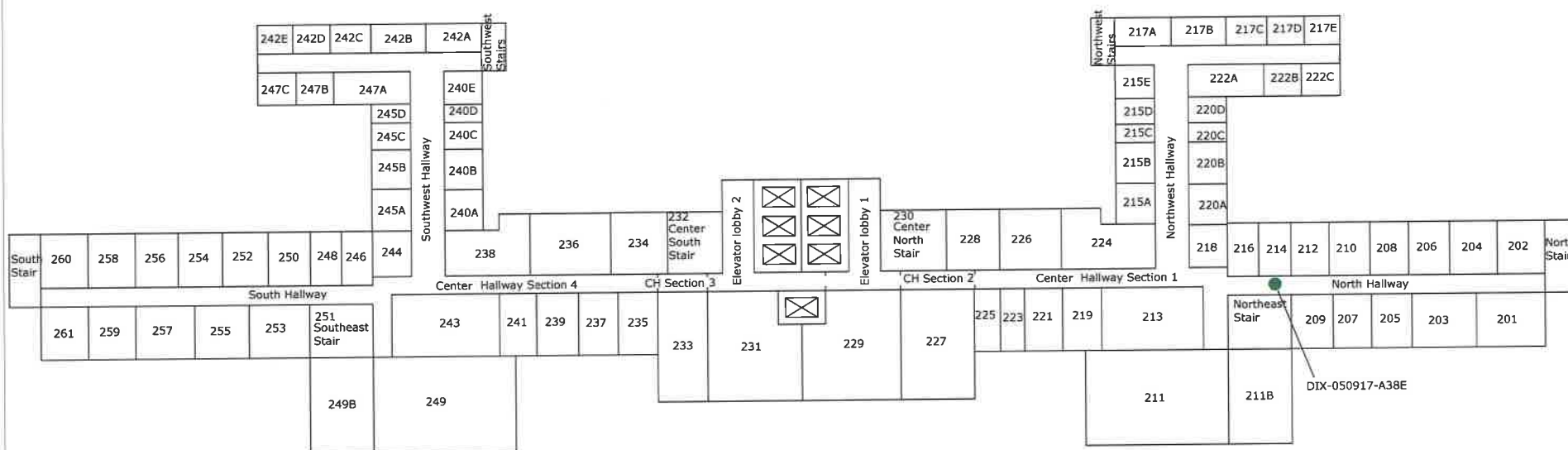


Soil and Land Use Technology, Inc.  
 1818 New York Ave, Suite 231, NE  
 Washington DC 20002  
 (301) 595-3783

St. Elizabeth Hospital  
 Dix Building Hazmat Survey  
**FLOOR:1**



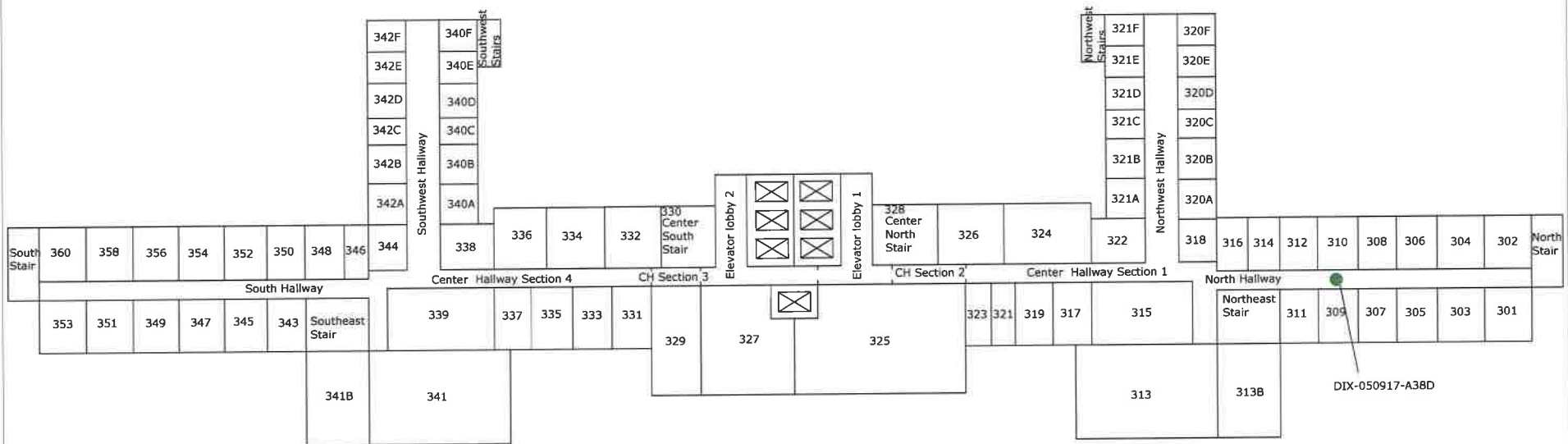
← MLK AVE SE →



Soil and Land Use Technology, Inc.  
1818 New York Ave, Suite 231, NE  
Washington DC 20002  
(301) 595-3783

St. Elizabeth Hospital  
Dix Building Hazmat Survey  
**FLOOR:2**

← MLK AVE SE →



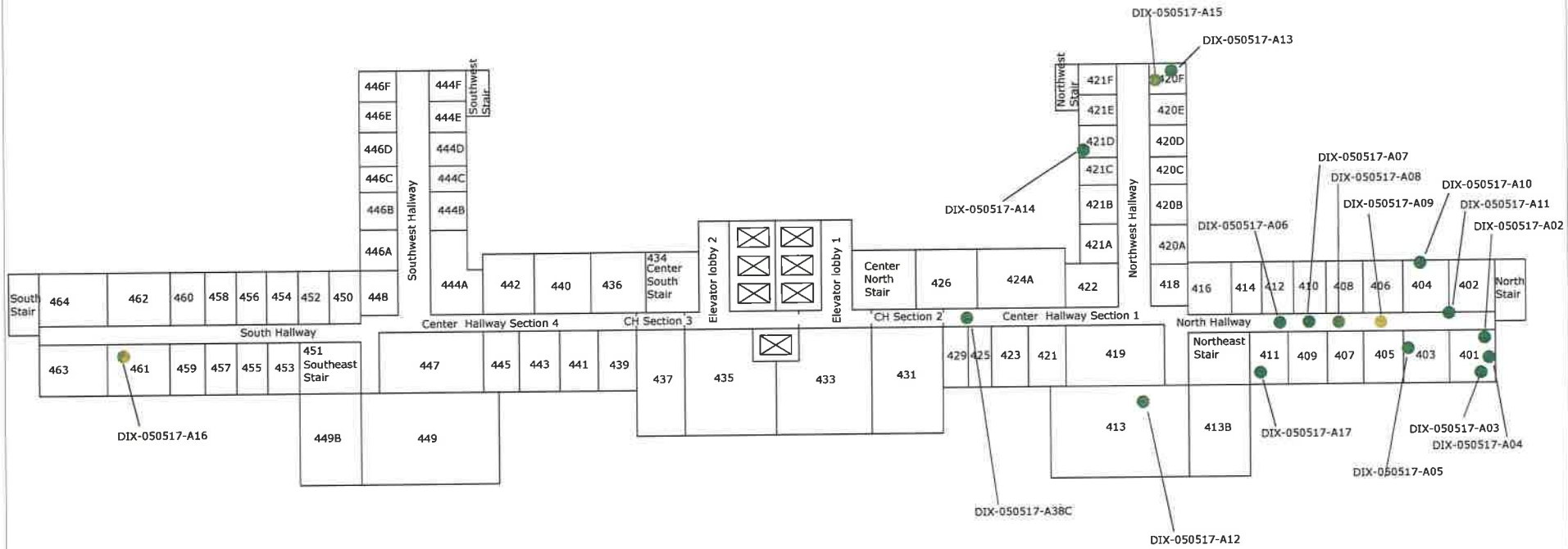
● SAMPLE LOCATION  
\* NOT TO SCALE



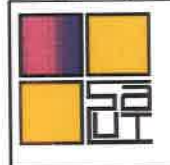
Soil and Land Use Technology, Inc.  
1818 New York Ave, Suite 231, NE  
Washington DC 20002  
(301) 595-3783

St. Elizabeth Hospital  
Dix Building Hazmat Survey  
**FLOOR:3**

← MLK AVE SE →



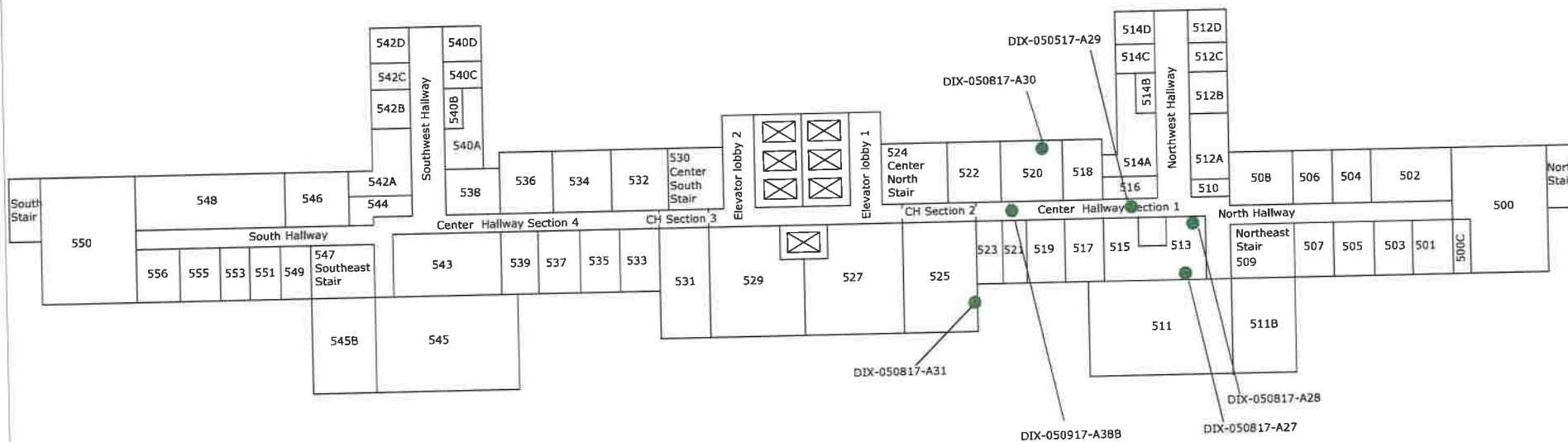
● SAMPLE LOCATION  
\* NOT TO SCALE



Soil and Land Use Technology, Inc.  
1818 New York Ave, Suite 231, NE  
Washington DC 20002  
(301) 595-3783

St. Elizabeth Hospital  
Dix Building Hazmat Survey  
**FLOOR:4**

← MLK AVE SE →



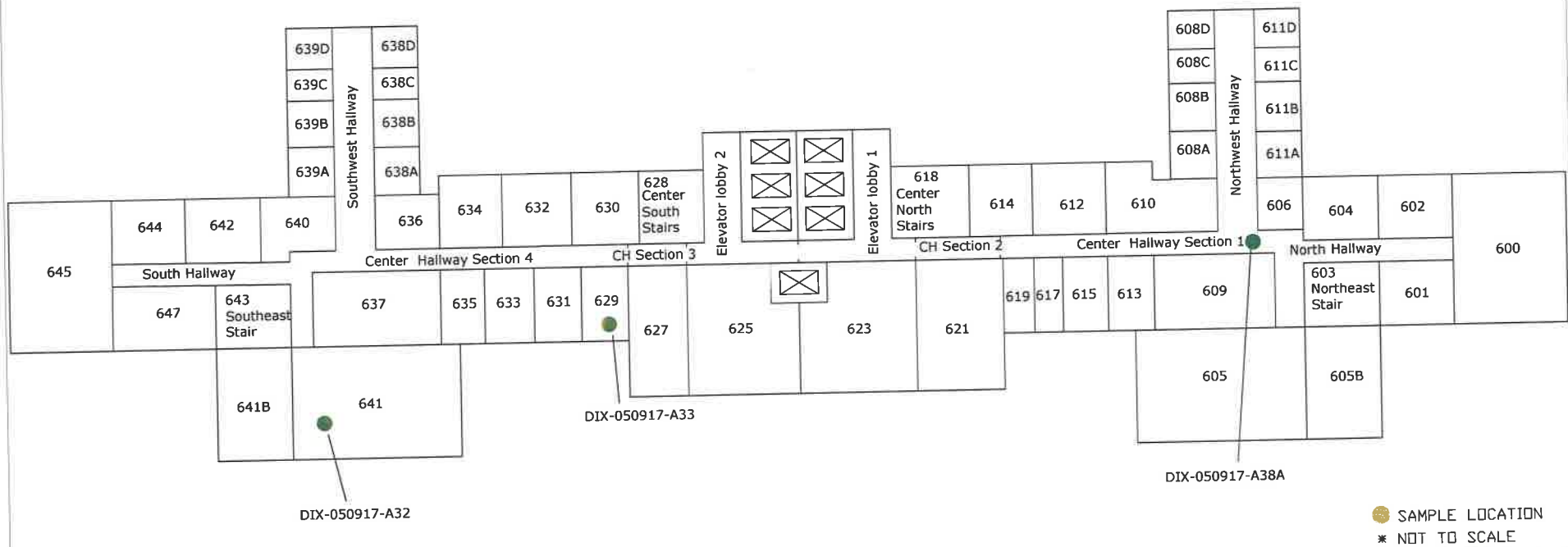
● SAMPLE LOCATION  
\* NOT TO SCALE



Soil and Land Use Technology, Inc.  
1818 New York Ave, Suite 231, NE  
Washington DC 20002  
(301) 595-3783

St. Elizabeth Hospital  
Dix Building Hazmat Survey  
**FLOOR:5**

← MLK AVE SE →

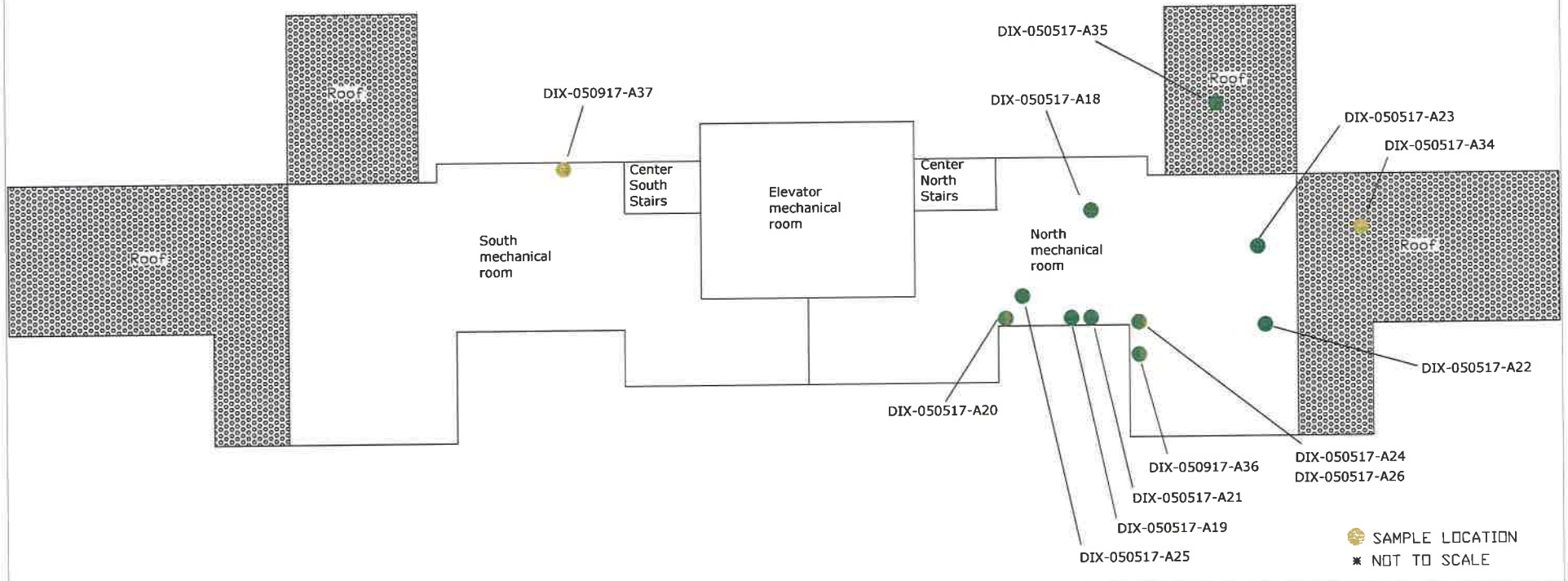


Soil and Land Use Technology, Inc.  
1818 New York Ave, Suite 231, NE  
Washington DC 20002  
(301) 595-3783

St. Elizabeth Hospital  
Dix Building Hazmat Survey  
FLOOR:6



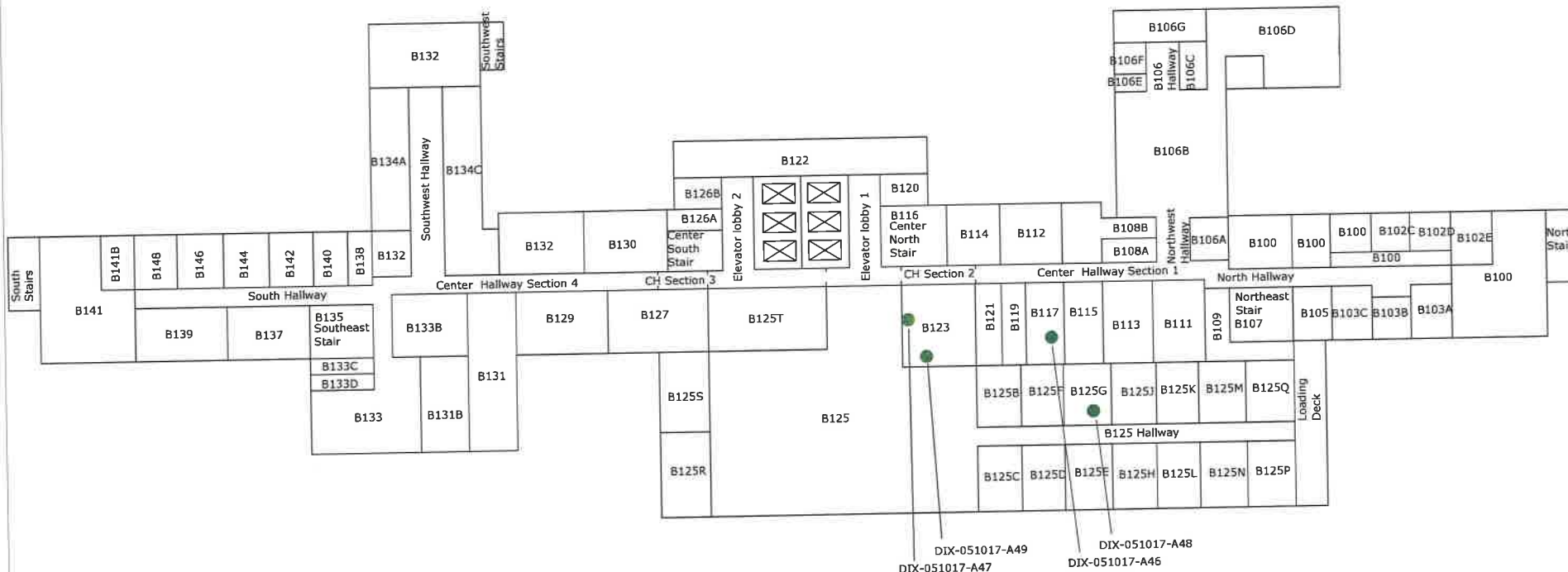
← MLK AVE SE →



Soil and Land Use Technology, Inc.  
1818 New York Ave, Suite 231, NE  
Washington DC 20002  
(301) 595-3783

St. Elizabeth Hospital  
Dix Building Hazmat Survey  
**FLOOR: 7**

← MLK AVE SE →



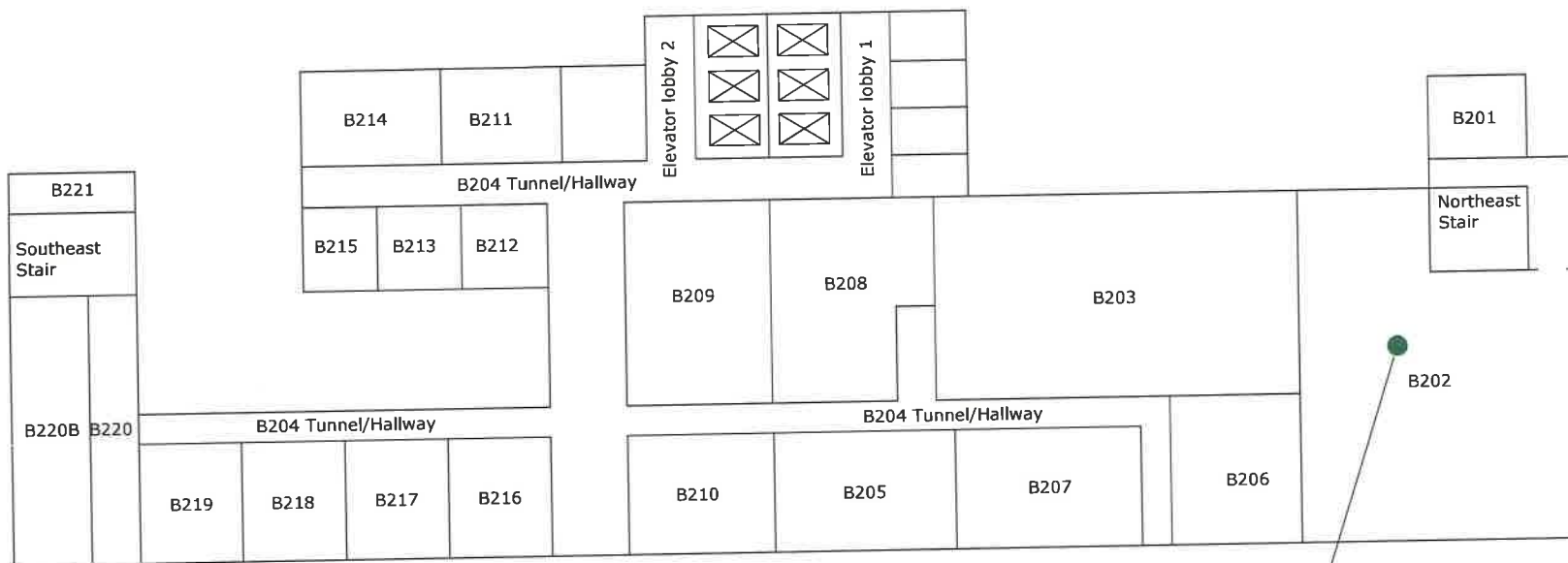
● SAMPLE LOCATION  
\* NOT TO SCALE



Soil and Land Use Technology, Inc.  
1818 New York Ave, Suite 231, NE  
Washington DC 20002  
(301) 595-3783

St. Elizabeth Hospital  
Dix Building Hazmat Survey  
FLOOR:Basement 1

← MLK AVE SE →



DIX-051117-A50

● SAMPLE LOCATION  
\* NOT TO SCALE



Soil and Land Use Technology, Inc.  
1818 New York Ave, Suite 231, NE  
Washington DC 20002  
(301) 595-3783

St. Elizabeth Hospital  
Dix Building Hazmat Survey  
FLOOR: B2-Sub-basement



## Appendix F: Photo Catalog



Photo 1: Tan 9"x9" floor tile with streaks (Close-up)



Photo 2: Tan 9"x9" floor tile with streaks (Wide angle)



Photo 3: Lt. Blue 12"x12" floor tile with blue streaks (Close-up)



Photo 4: Lt. Blue 12"x12" floor tile with blue streaks (Wide angle)

**PHOTOGRAPHS- ASBESTOS**  
May 5<sup>th</sup> thru 12<sup>th</sup>, 2017

**Dix building- St. Elizabeth Hospital**  
**Project No. 17-030**







Photo 5: Glue Dots over the 1'x1' ceiling tile (Close-up)



Photo 6: Glue Dots over the 1'x1' ceiling tile (Wide angle)

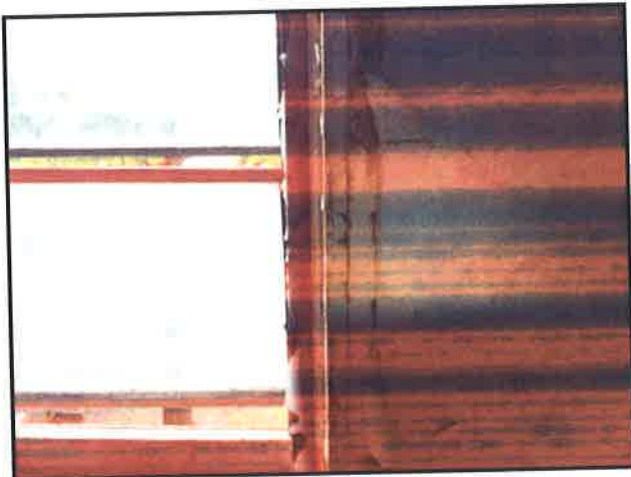


Photo 7: Gray Caulking on Windows (Close-up)



Photo 8: Gray Caulking on Windows (Wide angle)

**PHOTOGRAPHS- ASBESTOS**  
May 5<sup>th</sup> thru 12<sup>th</sup>, 2017

**Dix building- St. Elizabeth Hospital**  
**Project No. 17-030**







Photo 9: Green 9"x9" Floor tile with mastic  
(Close-up)



Photo 10: Green 9"x9" Floor tile with mastic  
(Wide angle)



Photo 11: Corrugated paper pipe insulation  
(Close-up) inside the pipe chase



Photo 12: Corrugated paper pipe insulation  
(Wide angle) scattered on the floor

**PHOTOGRAPHS- ASBESTOS**  
May 5<sup>th</sup> thru 12<sup>th</sup>, 2017

**Dix building- St. Elizabeth Hospital**  
**Project No. 17-030**





Photo 13: Off White 12"x12" Floor tile with mastic (Close-up)



Photo 14: Off White 12"x12" Floor tile with mastic (Wide angle)

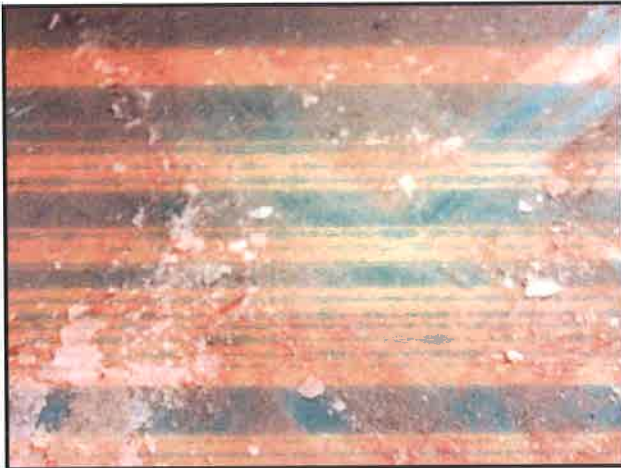


Photo 15: Green 12"x12" Floor tile with mastic (Close-up)



Photo 16: Green 12"x12" Floor tile with mastic (Wide angle)

**PHOTOGRAPHS- ASBESTOS**  
May 5<sup>th</sup> thru 12<sup>th</sup>, 2017

**Dix building- St. Elizabeth Hospital**  
**Project No. 17-030**





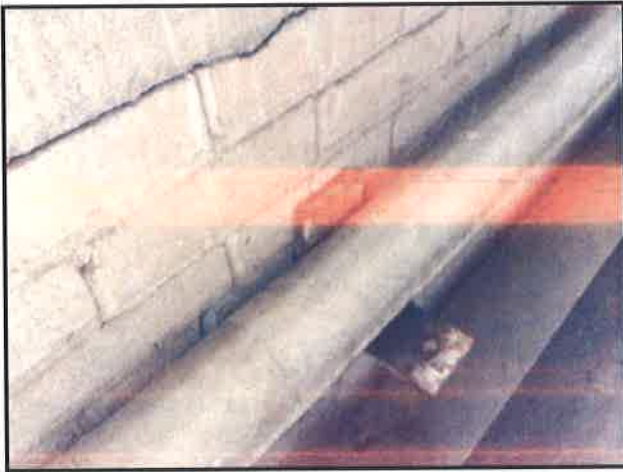


Photo 17: 4"D -6"D Pipe Insulation (Close-up)



Photo 18: 4"D -6"D Pipe Insulation (Wide angle)



Photo 19: 12"D- 15"D Pipe Insulation (Close-up)



Photo 20: 12"D- 15"D Pipe Insulation (Wide angle)

**PHOTOGRAPHS- ASBESTOS**  
May 5<sup>th</sup> thru 12<sup>th</sup>, 2017

**Dix building- St. Elizabeth Hospital**  
**Project No. 17-030**





Photo 21: 2"D- 4"D Pipe Insulation (Close-up)



Photo 22: 2"D- 4"D Pipe Insulation (Wide angle)

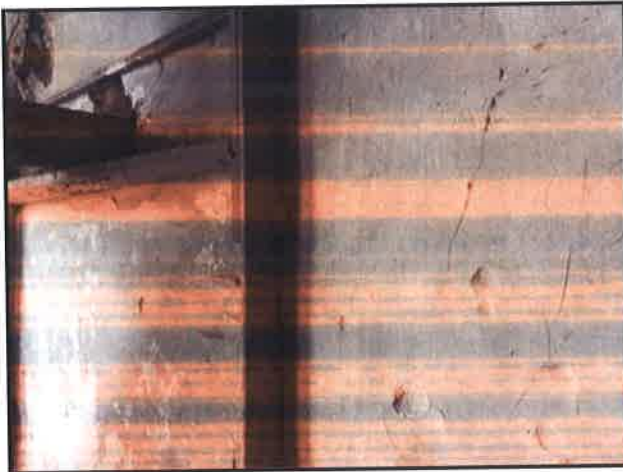


Photo 23: Duct Insulation(AHU) 7th Floor (Close-up)

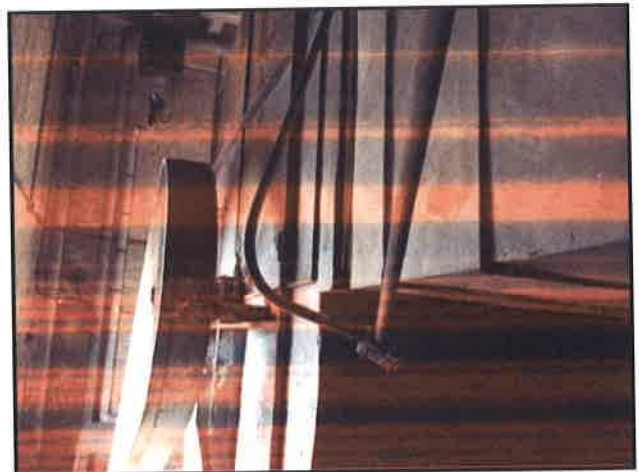
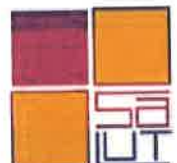


Photo 24: Duct Insulation(AHU) 7th Floor (Wide angle)

**PHOTOGRAPHS- ASBESTOS**  
May 5<sup>th</sup> thru 12<sup>th</sup>, 2017

**Dix building- St. Elizabeth Hospital**  
**Project No. 17-030**





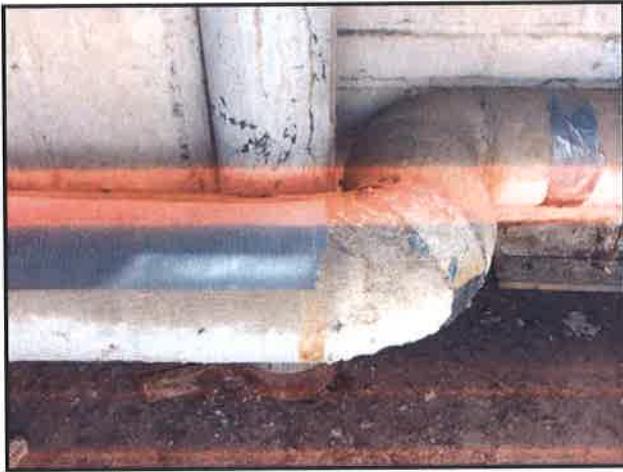


Photo 25: 4"D -6"D Pipe Fittings (Close-up)



Photo 26: 4"D -6"D Pipe Fittings (Wide angle)

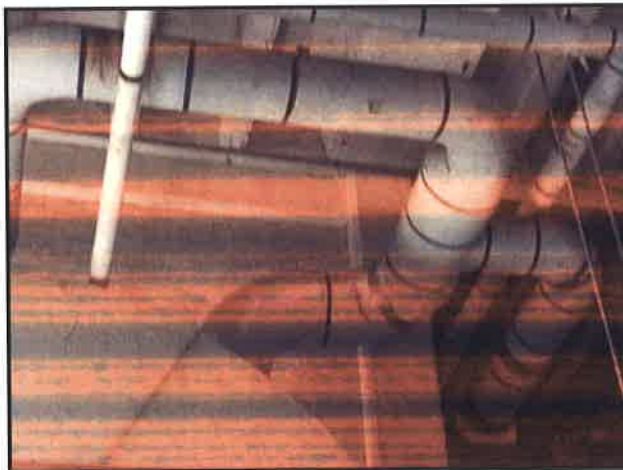


Photo 27: 12"D- 15"D Pipe Fittings (Close-up)

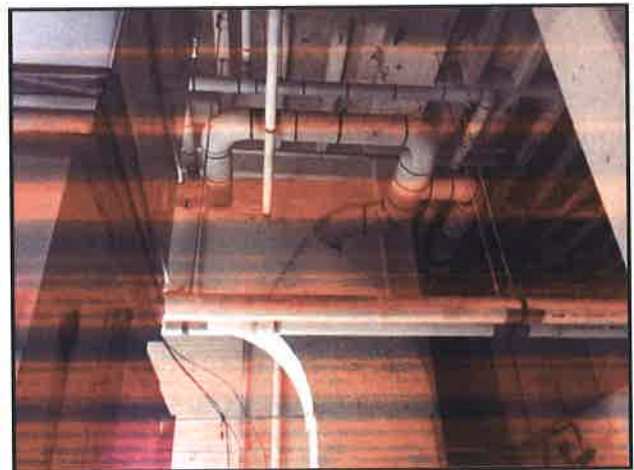


Photo 28: 12"D- 15"D Pipe Fittings (Wide angle)

**PHOTOGRAPHS- ASBESTOS**  
May 5<sup>th</sup> thru 12<sup>th</sup>, 2017

**Dix building- St. Elizabeth Hospital**  
**Project No. 17-030**



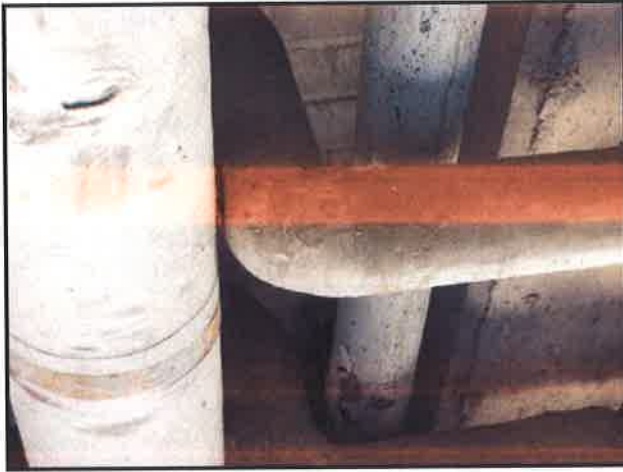


Photo 29: 2"D- 4"D Pipe Fittings (Close-up)



Photo 30: 2"D- 4"D Pipe Fittings (Wide angle)

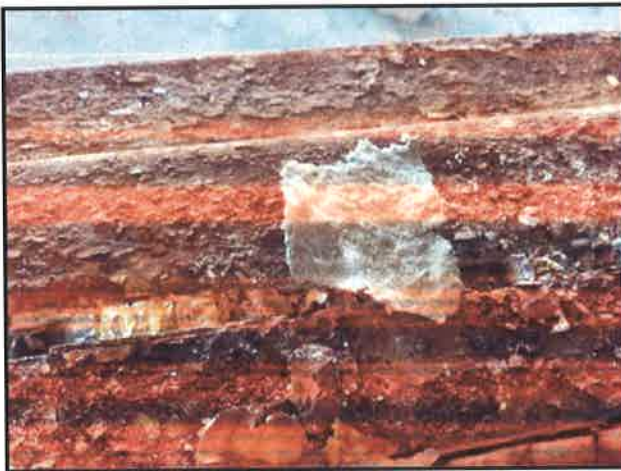


Photo 31: 1.5'x8" White Duct insulation over the hallway ceiling (Close-up)

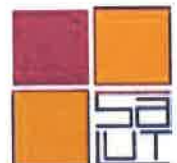


Photo 32: 1.5'x8" White Duct insulation over the hallway ceiling (Wide angle)

**PHOTOGRAPHS- ASBESTOS**

May 5<sup>th</sup> thru 12<sup>th</sup>, 2017

**Dix building- St. Elizabeth Hospital  
Project No. 17-030**





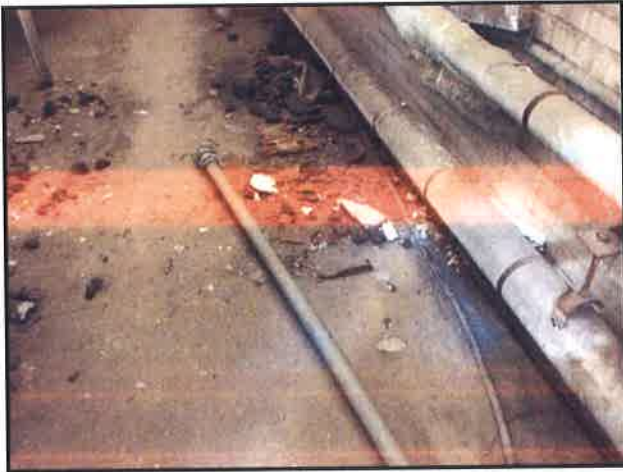


Photo 33: Debris on the 7th floor (Wide angle)



Photo 34: Debris on the 7th floor (Wide angle)



Photo 35: Debris on the floor 1-6 (Wide angle)



Photo 36: Debris on the floor 1-6 (Wide angle)

**PHOTOGRAPHS- ASBESTOS**  
May 5<sup>th</sup> thru 12<sup>th</sup>, 2017

**Dix building- St. Elizabeth Hospital**  
**Project No. 17-030**

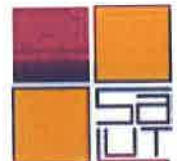




Photo 37: Gray Exterior window caulking  
(Close up)



Photo 38: Gray Exterior window caulking  
(Wide angle)



Photo 39: Black Exterior water proofing  
(Close up)



Photo 40: Black Exterior water proofing  
(Wide angle)

**PHOTOGRAPHS- ASBESTOS**  
May 5<sup>th</sup> thru 12<sup>th</sup>, 2017

**Dix building- St. Elizabeth Hospital**  
**Project No. 17-030**







Photo 41: Gray Exterior door caulking (Close up)



Photo 42: Gray Exterior door caulking (Wide angle)



Photo 43: Gray Exterior window sill caulking (Close up)

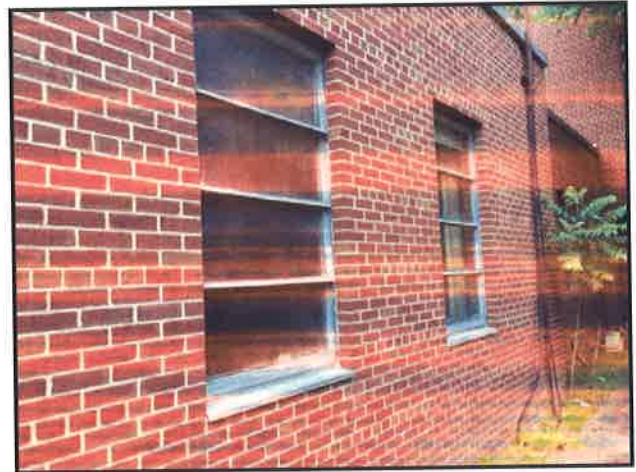


Photo 44: Gray Exterior window sill caulking (Wide angle)

**PHOTOGRAPHS- ASBESTOS**  
May 5<sup>th</sup> thru 12<sup>th</sup>, 2017

**Dix building- St. Elizabeth Hospital**  
**Project No. 17-030**





Photo 45: Black sealant (Close up)



Photo 46: Black sealant (Wide angle)

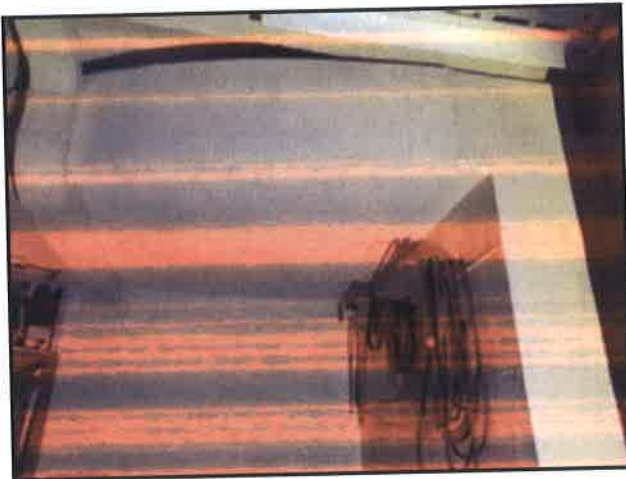


Photo 47: White duct insulation (Close up)

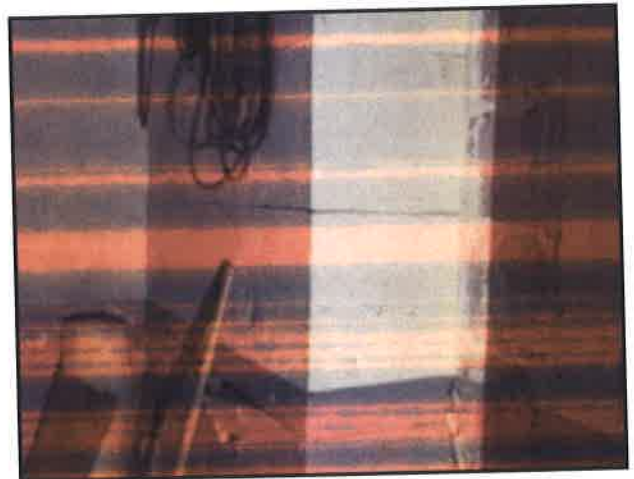


Photo 48: White duct insulation (Wide angle)

**PHOTOGRAPHS- ASBESTOS**  
May 5<sup>th</sup> thru 12<sup>th</sup>, 2017

**Dix building- St. Elizabeth Hospital**  
**Project No. 17-030**





Photo 49: 12'x6' White tank insulation (Close up)



Photo 50: 12'x6' White tank insulation (Wide angle)

**PHOTOGRAPHS- ASBESTOS**  
May 5<sup>th</sup> thru 12<sup>th</sup>, 2017

**Dix building- St. Elizabeth Hospital**  
**Project No. 17-030**

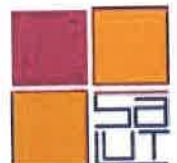






Photo 51: 4<sup>th</sup> floor, room 413A, blue wooden shelves and cabinet



Photo 52: 4<sup>th</sup> floor, room 416, ceramic wall tiles

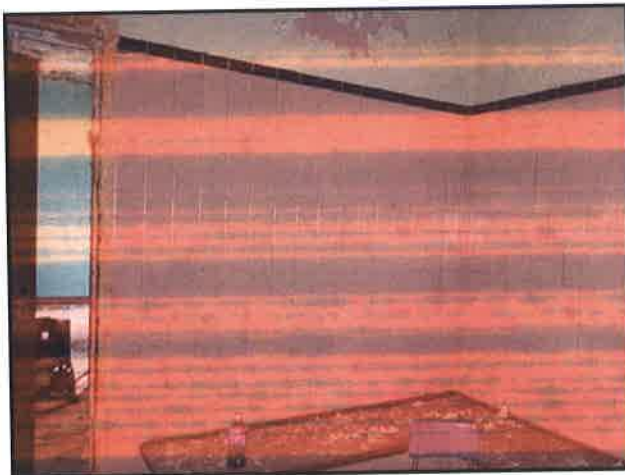


Photo 53: 4<sup>th</sup> floor, room 446B, ceramic wall tiles.



Photo 54: basement, yellow painted pipe

**PHOTOGRAPHS-LEAD PAINT**  
May 5<sup>th</sup> thru 12<sup>th</sup>, 2017

**Dix building- St. Elizabeth Hospital**  
**Project No. 17-030**







Photo 55: 1st floor, elevator lobby, ceramic wall tiles

**PHOTOGRAPHS- LEAD PAINT**  
May 5<sup>th</sup> thru 12<sup>th</sup>, 2017

**Dix building- St. Elizabeth Hospital**  
**Project No. 17-030**





Photo 56: Light ballasts



Photo 57: Fluorescent light tubes



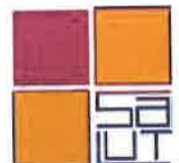
Photo 58: Broken fluorescent light tubes



Photo 59: Paint, Putty and Solvents

**PHOTOGRAPHS- PCB, MERCURY AND UNIVERSAL WASTE**  
May 5<sup>th</sup> thru 12<sup>th</sup>, 2017

**Dix building- St. Elizabeth Hospital**  
**Project No. 17-030**





## **Appendix G: Inspector Credentials**

**ATC GROUP SERVICES, LLC**

9231 RUMSEY ROAD COLUMBIA, MD 21045 (410) 381-0232

# CERTIFICATE OF ACHIEVEMENT

AWARDED TO

# DUNG NGUYEN

IN RECOGNITION OF SUCCESSFUL COMPLETION OF THE COURSE

# ASBESTOS INSPECTOR REVIEW

A 4-HOUR ANNUAL REVIEW PROGRAM OF STUDY PRESENTED IN ACCORDANCE WITH  
THE PROVISIONS OF THE U.S. ENVIRONMENTAL PROTECTION AGENCY MODEL  
ACCREDITATION PLAN, 40 CFR PART 763, APPENDIX C TO SUBPART E,  
FOR ACCREDITATION UNDER TSCA TITLE II.

PRESENTED BY



A handwritten signature in black ink, appearing to read 'Clayton E. Miller'.

**17-0050**

CERTIFICATE #

COURSE DIRECTOR  
CLAYTON E. MILLER

**February 14, 2017**

COURSE DATE

**February 14, 2017**

EXAMINATION DATE

**February 14, 2018**

EXPIRATION DATE



**ATC GROUP SERVICES, LLC**

9231 RUMSEY ROAD COLUMBIA, MD 21045 (410) 381-0232

## CERTIFICATE OF ACHIEVEMENT

AWARDED TO

# KENNETH LONG

IN RECOGNITION OF SUCCESSFUL COMPLETION OF THE COURSE

## ASBESTOS INSPECTOR/ MANAGEMENT PLANNER REVIEW

AN 8-HOUR ANNUAL REVIEW PROGRAM OF STUDY PRESENTED IN ACCORDANCE WITH  
THE PROVISIONS OF THE U.S. ENVIRONMENTAL PROTECTION AGENCY MODEL  
ACCREDITATION PLAN, 40 CFR PART 763, APPENDIX C TO SUBPART E,  
FOR ACCREDITATION UNDER TSCA TITLE II.

PRESENTED BY

**ATC**  
GROUP SERVICES LLC



COURSE DIRECTOR  
CLAYTON E. MILLER

**16-0602**

CERTIFICATE #

**October 5, 2016**

COURSE DATE

**October 5, 2016**

EXAMINATION DATE

**October 5, 2017**

EXPIRATION DATE

# AEROSOL MONITORING & ANALYSIS, INC.

This is to certify that  
**RANATHUNGA MADHUSHA SARATCHANDRA**  
has met the attendance requirements and successfully completed  
the course entitled

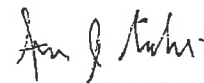
**4-HOUR EPA AHERA INSPECTOR REFRESHER**  
For Accreditation Under TSCA Title II

07/11/2016  
Course Date

07/11/2016  
Exam Date

7/11/2017  
Expiration Date

STEVE SIERACKI  
Principal Instructor



AIR07112016-8  
Certification No.

VAAIR07112016-8  
Virginia Certification No.

E. Rush Barnett  
Course Director



1331 Ashton Road

P.O.Box 646

Hanover, MD 21076

P: 410-684-3327

F: 410-684-3724

[www.amatraining.com](http://www.amatraining.com)



ATC GROUP SERVICES, LLC  
9231 RUMSEY ROAD COLUMBIA, MD 21045 (410) 381-0232

## CERTIFICATE OF ACHIEVEMENT

AWARDED TO

# DILAN MACK

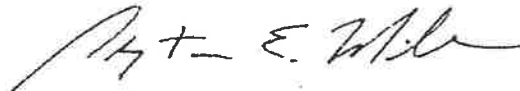
IN RECOGNITION OF SUCCESSFUL COMPLETION OF THE COURSE

## ASBESTOS INSPECTOR REVIEW

A 4-HOUR ANNUAL REVIEW PROGRAM OF STUDY PRESENTED IN ACCORDANCE WITH  
THE PROVISIONS OF THE U.S. ENVIRONMENTAL PROTECTION AGENCY MODEL  
ACCREDITATION PLAN, 40 CFR PART 763, APPENDIX C TO SUBPART E,  
FOR ACCREDITATION UNDER TSCA TITLE II.

PRESENTED BY

**ATC**  
GROUP SERVICES LLC



COURSE DIRECTOR  
CLAYTON E. MILLER

**16-0638**

CERTIFICATE #

**November 9, 2016**

COURSE DATE

**November 9, 2016**

EXAMINATION DATE

**November 9, 2017**

EXPIRATION DATE

# AEROSOL MONITORING & ANALYSIS, INC.

This is to certify that  
**DUNG NGUYEN**

2916 JOHNSON RD  
FALLS CHURCH, VA 22042

has met the attendance requirements and successfully completed  
the course entitled

## 3-DAY LEAD INSPECTOR

This Training Meets the Certification Requirements for DC, MD & VA

<u>02/16/2016 to 02/18/2016</u> Course Date	<u>02/18/2016</u> Exam Date		<i>E. Rush Barnett</i>
<u>2/18/2018</u> MD Expiration Date	<u>2/18/2019</u> VA Expiration Date	<u>2/18/2018</u> DC Expiration Date	<u>RUSH BARNETT</u> Principal Instructor
<u>63673</u> Certification No.	<u>VA63673</u> VA Certification No.	<u>63673</u> DC Certification No.	<u>E. Rush Barnett</u> Course Director

DC Lead Training Provider Accreditation No. DC12-001-I-I-16

1331 Ashton Road P.O.Box 646 Hanover, MD 21076 P: 410-684-3327 F: 410-684-3724

[www.amatraining.com](http://www.amatraining.com)

# AEROSOL MONITORING & ANALYSIS, INC.

This is to certify that  
**AZZAM JAWAD**

19917 GATESHEAD CIR  
GERMANTOWN, MD 20876

has met the attendance requirements and successfully completed  
the course entitled

## 3-DAY LEAD INSPECTOR

This Training Meets the Certification Requirements for DC, MD & VA

05/23/2016 to 05/25/2016

Course Date

05/25/2016

Exam Date

MIKE DRABO

Principal Instructor

*Michael W. Drabo*

5/25/2018

MD Expiration Date

5/25/2019

VA Expiration Date

5/25/2018

DC Expiration Date

*E. Rush Barnett*

63102

Certification No.

VA63102

VA Certification No.

63102

DC Certification No.

E. Rush Barnett

Course Director

DC Lead Training Provider Accreditation No. DC12-001-I-I-16

1331 Ashton Road

P.O.Box 646

Hanover, MD 21076

P: 410-684-3327

F: 410-684-3724

[www.amatraining.com](http://www.amatraining.com)

GOVERNMENT OF THE DISTRICT OF COLUMBIA  
DEPARTMENT OF ENERGY & ENVIRONMENT

00640



LEAD AND HEALTHY HOUSING DIVISION  
COMPLIANCE AND ENFORCEMENT BRANCH



NAME: Dung Nguyen  
CLASS CODE: Inspector  
EXPIRATION DATE: 6-9-2018  
CARD NUMBER: DC16-8266

*Tommy Wells*

**Tommy Wells**  
Director



GOVERNMENT OF THE DISTRICT OF COLUMBIA

00768

DEPARTMENT OF ENERGY & ENVIRONMENT



LEAD AND HEALTHY HOUSING DIVISION  
COMPLIANCE AND ENFORCEMENT BRANCH



NAME: **Wualter Hernandez**

CLASS CODE: **Inspector**

EXPIRATION DATE: **11-10-2018**

CARD NUMBER: **DC16-6206**



*Tommy Wells*

**Tommy Wells**

**Director**



## **Appendix H: Laboratory Accreditations**





## AIHA Laboratory Accreditation Programs, LLC

acknowledges that

### EMSL Analytical, Inc.

10768 Baltimore Ave., Beltsville, MD 20705

Laboratory ID: 102891

along with all premises from which key activities are performed, as listed above, has fulfilled the requirements of the AIHA Laboratory Accreditation Programs (AIHA-LAP), LLC accreditation to the ISO/IEC 17025:2005 international standard, *General Requirements for the Competence of Testing and Calibration Laboratories* in the following:

#### LABORATORY ACCREDITATION PROGRAMS

- |  |                                   |
|--|-----------------------------------|
| <input checked="" type="checkbox"/> INDUSTRIAL HYGIENE         | Accreditation Expires: 09/01/2017 |
| <input type="checkbox"/> ENVIRONMENTAL LEAD                    | Accreditation Expires:            |
| <input checked="" type="checkbox"/> ENVIRONMENTAL MICROBIOLOGY | Accreditation Expires: 09/01/2017 |
| <input type="checkbox"/> FOOD                                  | Accreditation Expires:            |
| <input type="checkbox"/> UNIQUE SCOPES                         | Accreditation Expires:            |

Specific Field(s) of Testing (FoT)/Method(s) within each Accreditation Program for which the above named laboratory maintains accreditation is outlined on the attached **Scope of Accreditation**. Continued accreditation is contingent upon successful on-going compliance with ISO/IEC 17025:2005 and AIHA-LAP, LLC requirements. This certificate is not valid without the attached **Scope of Accreditation**. Please review the AIHA-LAP, LLC website ([www.aihaaccreditedlabs.org](http://www.aihaaccreditedlabs.org)) for the most current Scope.

Gerald Schultz, CIH  
Chairperson, Analytical Accreditation Board

Cheryl O. Morton  
Managing Director, AIHA Laboratory Accreditation Programs, LLC

Revision 14: 03/26/2014

Date Issued: 06/30/2015



## AIHA Laboratory Accreditation Programs, LLC

### SCOPE OF ACCREDITATION

**EMSL Analytical, Inc.**  
10768 Baltimore Ave., Beltsville, MD 20705

Laboratory ID: **102891**  
Issue Date: 06/30/2015

The laboratory is approved for those specific field(s) of testing/methods listed in the table below. Clients are urged to verify the laboratory's current accreditation status for the particular field(s) of testing/Methods, since these can change due to proficiency status, suspension and/or withdrawal of accreditation.

#### Environmental Microbiology Laboratory Accreditation Program (EMLAP)

**Initial Accreditation Date: 12/01/2004**

EMLAP Category	Field of Testing (FoT)	Method	Method Description <i>(for internal methods only)</i>
<b>Fungal</b>	Air - Culturable	EMSL M005	Detection and Enumeration of Culturable Fungi From Environmental Samples
	Bulk - Culturable	EMSL M005	Detection and Enumeration of Culturable Fungi From Environmental Samples
	Surface - Culturable	EMSL M005	Detection and Enumeration of Culturable Fungi From Environmental Samples
	Air - Direct Examination	05-TP-003.7	Standard Operating Procedure for the Analysis of Airborne Fungal Spores, Hyphal Fragments, Pollen, Insect Fragments, Skin Fragments and Fibrous Particulate by Optical Microscopy of Spore Trap Samples
	Bulk - Direct Examination	EMSL M041	Standard Operating Procedure for the Microscopic Examination of Fungal Spores, Fungal Structures, Hyphae, Pollen, Insect Fragments, and Fibrous Material from Surface Samples
	Surface - Direct Examination	EMSL M041	Standard Operating Procedure for the Microscopic Examination of Fungal Spores, Fungal Structures, Hyphae, Pollen, Insect Fragments, and Fibrous Material from Surface Samples

A complete listing of currently accredited Environmental Microbiology laboratories is available on the AIHA-LAP, LLC website at: <http://www.aihaaccreditedlabs.org>