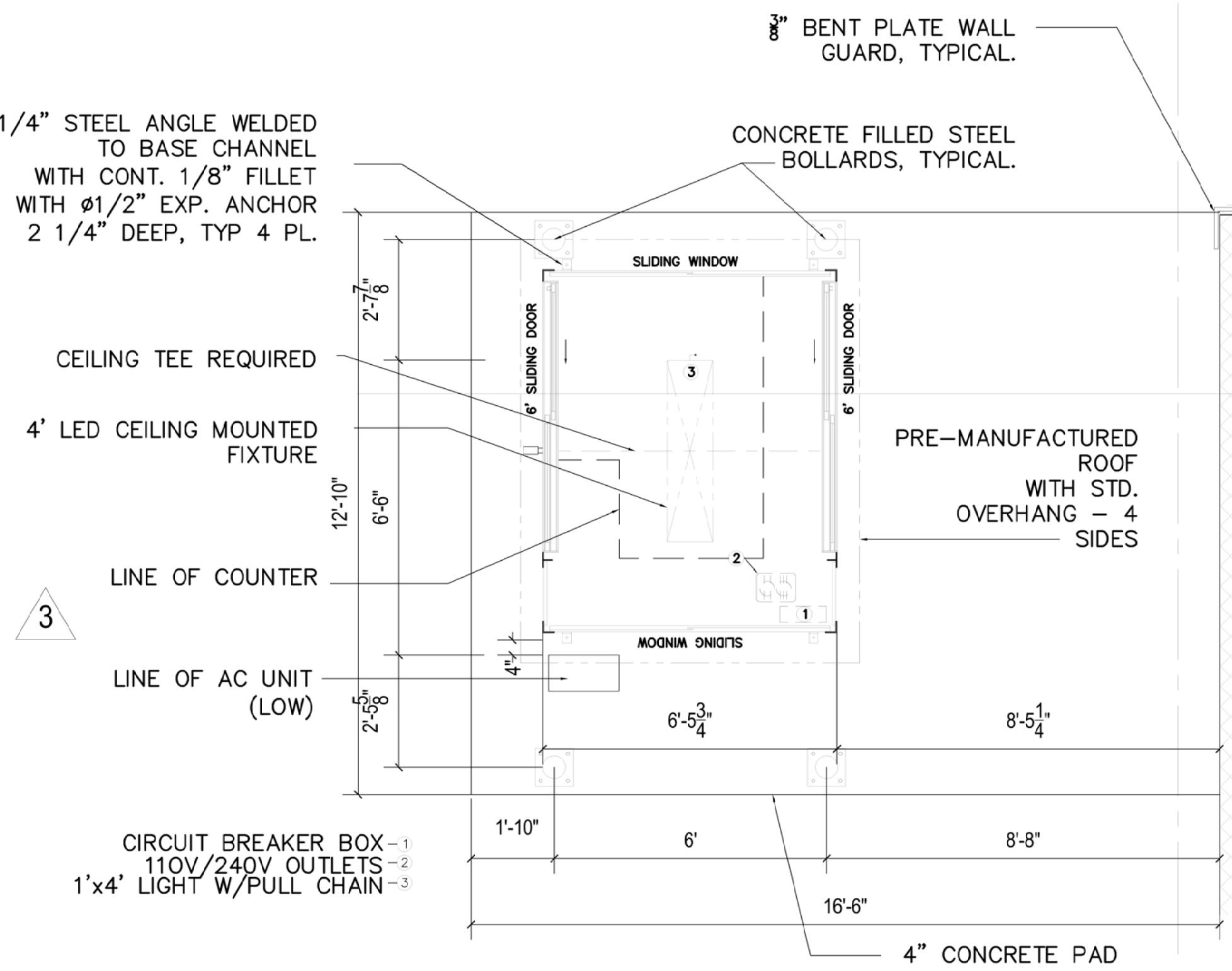


NOTE:
TIPPING FLOOR BOOTHS TO BE SUPPLIED BY SELECTED VENDOR.
LAYOUT PROVIDED FOR INTENT ONLY. VENDOR TO SUPPLY SHOP DRAWINGS
WITH FIELD VERIFIED CONFIGURATION AND ASSOCIATED DETAILS / SECTIONS.



1 FORT TOTTEN: TIPPING FLOOR BOOTH - FLOOR PLAN
SCALE: 3/8" = 1' - 0"

IBC CHAPTER 11 - ACCESSIBILITY:

1. SCOPING REQUIREMENTS: (IBC SECTION 1103)
THIS PROJECT IS NOT ACCESSIBLE.

IECC - INTERNATIONAL ENERGY CONSERVATION CODE:

THE FOLLOWING PROVISIONS FOR THERMAL RESISTANCE MEET OR EXCEED THE REQUIREMENTS STIPULATED BY THE DISTRICT OF COLUMBIA RESIDENTIAL ENERGY CODE (DCMR 12):

1. THERMAL ENVELOPE INSULATION (IECC-402.1.1):	
FENESTRATION	U=0.35
SKYLIGHTS	U=0.55
GLAZED FENESTRATION	SHGC=0.40
CEILING	R=49
WOOD FRAME	R=20
THERMAL MASS WALLS	R=8 (CONTINUOUS)
	R=13 (FRAMING CAVITY)
FLOORS	R=30
BASEMENT & CRAWL SPACE WALLS	R=15 (CONTINUOUS)
	R=19 (FRAMING CAVITY)
SLAB PERIMETER	R=10 FOR DEPTH 4'-0"

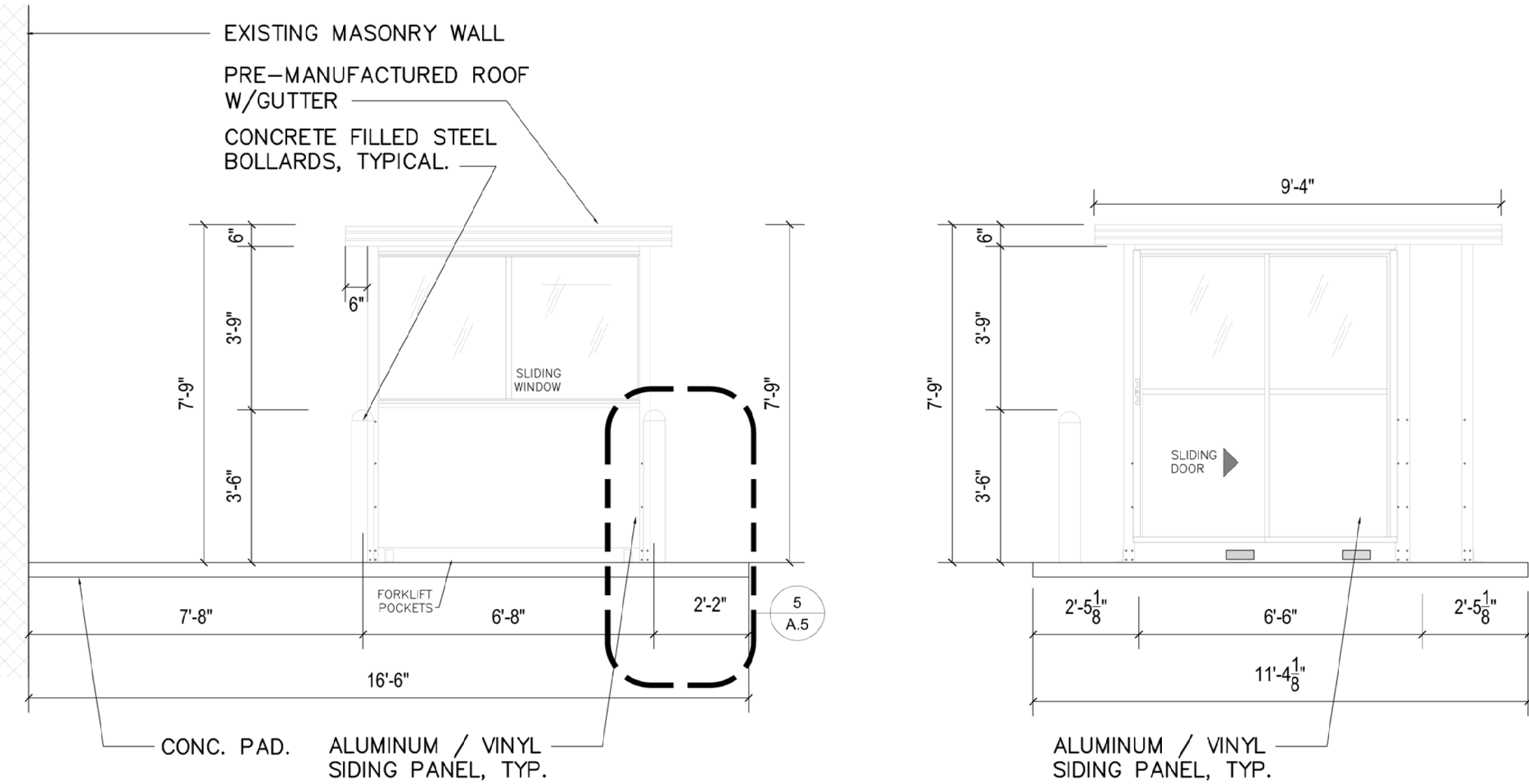
THE FOLLOWING PROVISIONS FOR THERMAL RESISTANCE MEET OR EXCEED THE REQUIREMENTS STIPULATED BY 2012 IECC CHAPTER 5 GOVERNING ENERGY EFFICIENCY:

1. BLDG ENVELOPE REQ - OPAQUE ASSEMBLIES (IECC TABLE 402.2(1)):	
ATTIC	U=0.027
MASS WALLS	U=0.104
WOOD FRAMED WALLS	U=0.052
FRAMED FLOORS	U=0.033
MASS FLOORS	U=0.076
SLAB ON GRADE FLOORS	F=0.65
2. BLDG ENVELOPE REQ - FENESTRATION (IECC TABLE 402.3):	
FIXED FENESTRATION	U=0.38 SHGC=0.40
OPERABLE FENESTRATION	U=0.45 SHGC=0.40
ENTRANCE DOORS	U=0.77 SHGC=0.40
SKYLIGHTS	U=0.50 SHGC=0.40

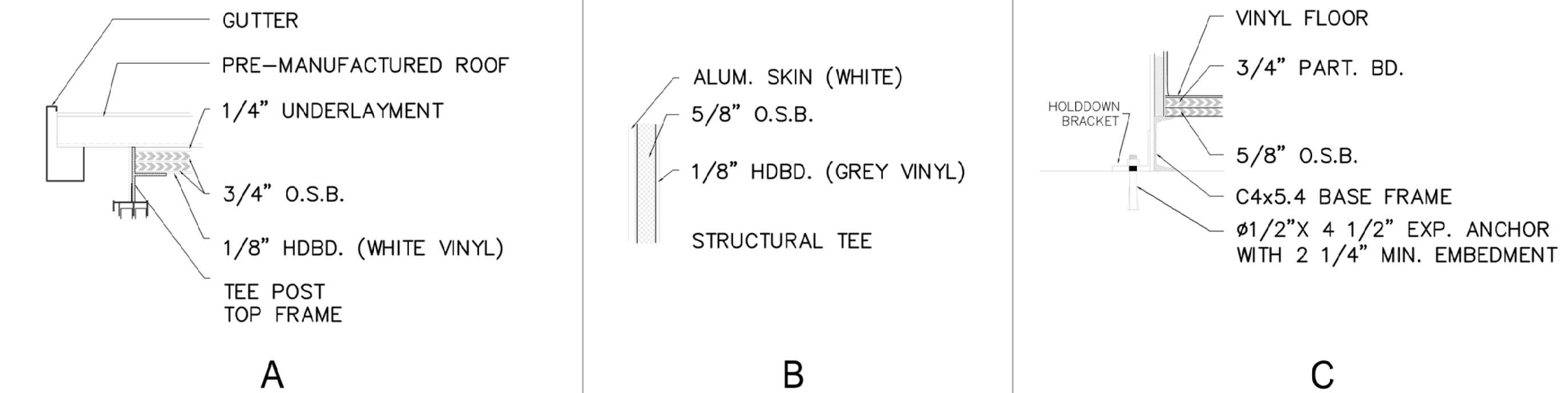
3. AIR LEAKAGE (IECC SECTION 502.4):

- WINDOWS NOT TO EXCEED 0.3 CFM PER SQUARE FOOT OF FENESTRATION.
- SWINGING DOORS NOT TO EXCEED 0.5 CFM PER SQUARE FOOT OF DOOR AREA. PROVIDE 1" FIBERGLASS SILL SEALER BETWEEN FOUNDATION AND WALL AND SILL PLATES.
- CURTAIN WALL & STOREFRONT GLAZING NOT TO EXCEED 0.3 CFM PER SQUARE FOOT OF FENESTRATION.
- FILL CONSTRUCTION (ELECTRICAL AND PLUMBING) HOLES, CRACKS, LOOSE JOINTS AND SPACES IN ROUGH FRAMING AND ROUGH MASONRY WITH APPROVED FOAM SEALER OR SIMILAR SEALANT.
- BUILDING LEAKAGE TEST REQUIRED TO ENSURE THE AIR LEAKAGE RATE DOES NOT EXCEED 5 AIR CHANGES PER HOUR
- AIR HANDLERS TO HAVE LEAKAGE RATE OF =2%

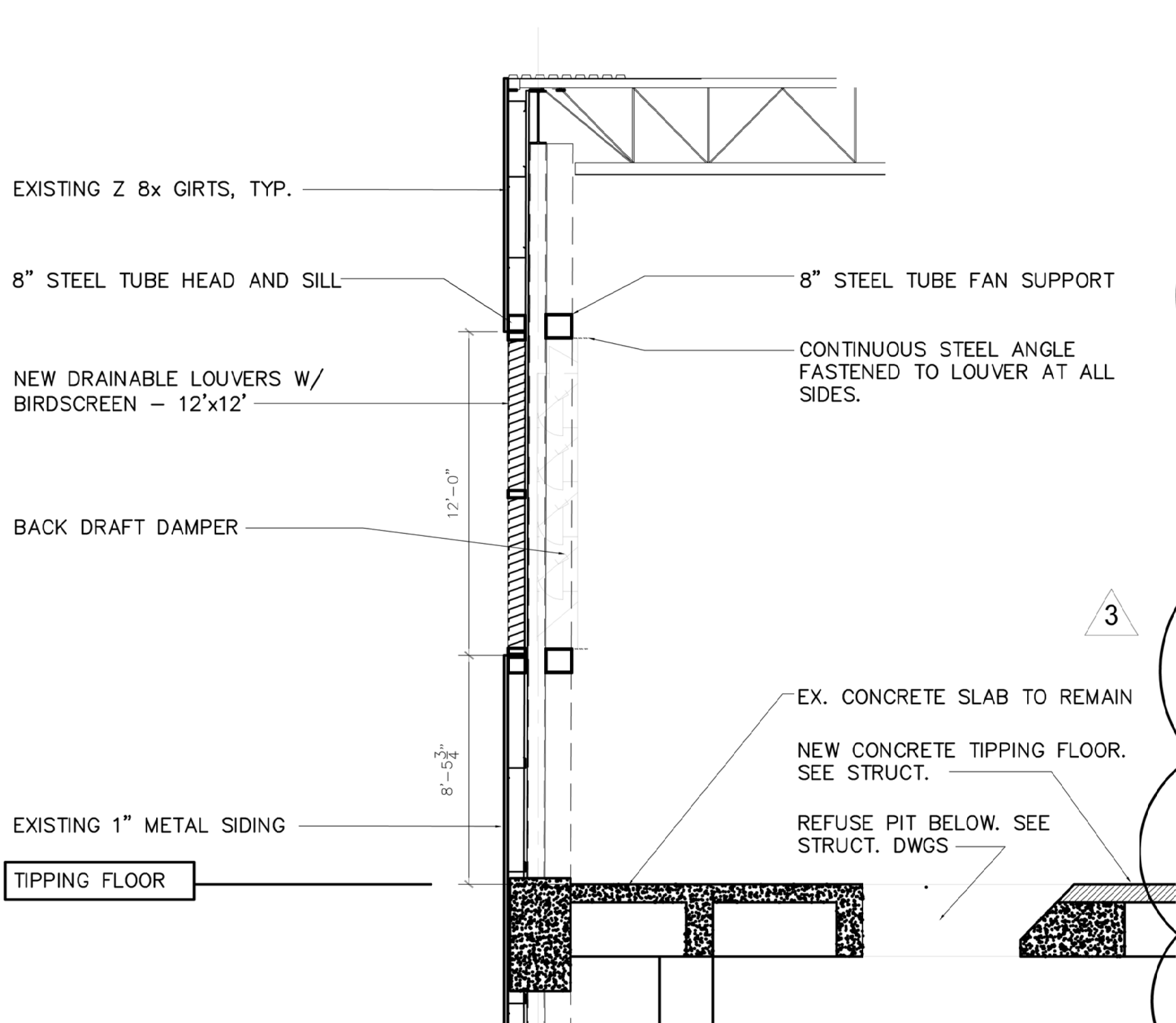
2 CODE REQUIREMENTS
SCALE: NTS



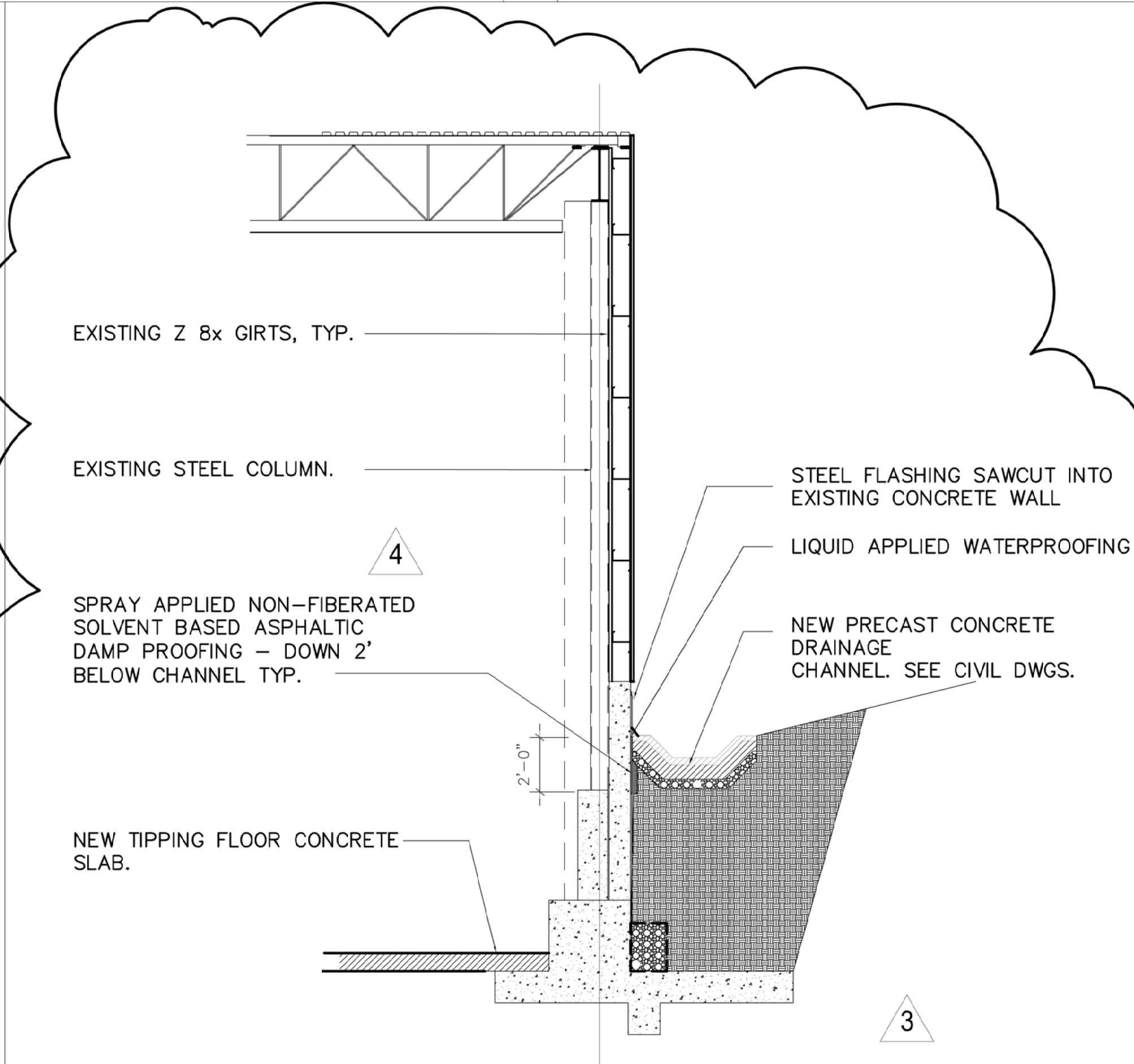
2 BOOTH ELEVATIONS
SCALE: 3/8" = 1' - 0"



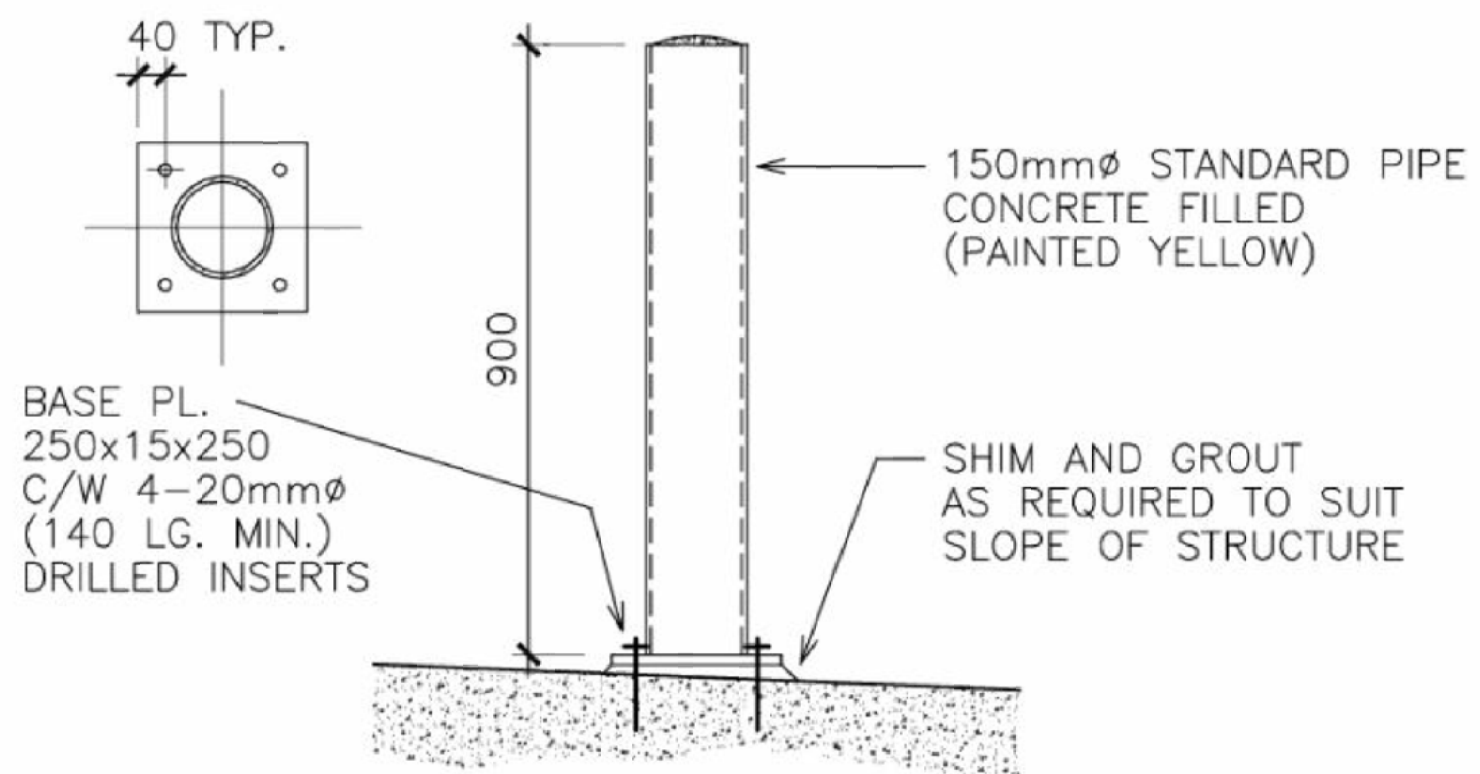
4 DETAILS
SCALE: NOT TO SCALE



5 LOUVER EXHAUST FAN W/ DAMPER DETAIL
SCALE: 1/4" = 1' - 0"



6 SECTION DETAIL - CONCRETE CHANNEL
SCALE: NOT TO SCALE



PER THE CIVIL DRAWING CIV 317 AND REVISED ARCH DRAWING ATTACHED A.6 - LIQUID APPLIED WATERPROOFING WILL OCCUR ABOVE THE CHANNEL WHILE WATERPROOFING MEMBRANE WILL EXTEND TO A DEPTH OF 2' BELOW THE CHANNEL.

4

ARCHITECT
dp+partners, llc

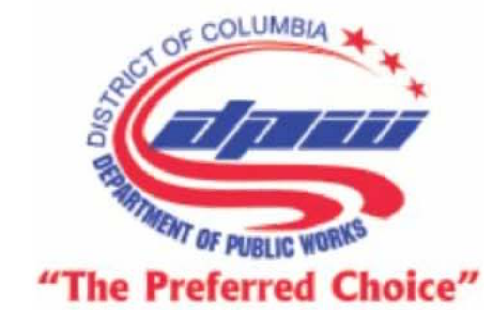
400 7TH STREET, NW SUITE 204
WASHINGTON, D.C. 20010

M.E.P. FP ENGINEER
SETTY & ASSOCIATES INTL.

5185 MACARTHURBLVD. NW,
SUITE 220,
WASHINGTON, DC 20016

STRUCTURAL / CIVIL
DELON HAMPTON & ASSOCIATES

8403 COLESVILLE RD SUITE 600
SILVER SPRING MD 20910



DISTRICT OF COLUMBIA
DEPARTMENT OF
PUBLIC WORKS

WASHINGTON DC 20009

FORT TOTTEN TRANSFER
STATION WASTE FACILITY
4900 BATES ROAD NORTHEAST
WASHINGTON DC 20011

ISSUED
BID DOCUMENTS : 07.27.2018

REVISIONS	
1.	REV1 PRELIM COMMENTS 1: 05.08.2018
2.	REV2 DPW COMMENTS 1: 05.17.2018
3.	REV3 DPW RFI & COMMENTS: 10.09.2018
4.	REV4 BIDDING Q&A : 12.10.2018

DATE
SCALE AS NOTED
DRAWN
CHECKED
JOB NO. BIDDING Q&A

SEAL
DRAWING TITLE

FORT TOTTEN:
TIPPING FLOOR BOOTHS &
SECTION DETAILS

SHEET NO.

A.6