

DCRA STAMP

DANIEL CURRY ARCHITECT



BUILDER: WKVM SOLUTIONS, LLC
106 STREET, NE SUITE 430
WASHINGTON, DC 20006
(202) 492-6548

CIVIL SURVEY ENGINEER: WKVM SOLUTIONS, INC.
106 STREET, NE SUITE 430
WASHINGTON, DC 20006
(202) 492-6548

STRUCTURAL ENGINEER: WKVM SOLUTIONS, INC.
106 STREET, NE SUITE 430
WASHINGTON, DC 20006
(202) 492-6548

MEP ENGINEER: WKVM SOLUTIONS, INC.
106 STREET, NE SUITE 430
WASHINGTON, DC 20006
(202) 492-6548

no.	date	description

KENILWORTH ELEMENTARY SCHOOL

project number: 2020003
date: 22 June, 2020



SITE DETAILS

CIV311



Kenilworth Elementary School
5-12 Playground Area



Kenilworth Elementary School
5-12 Playground Area



Kenilworth Elementary School
5-12 Playground Area



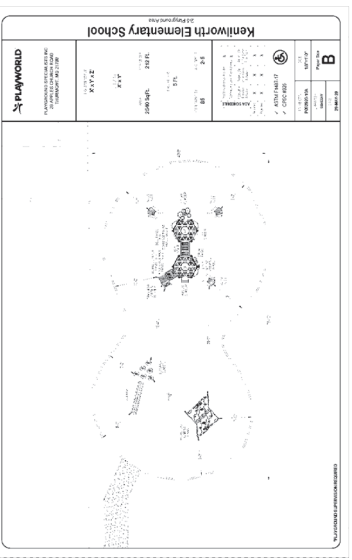
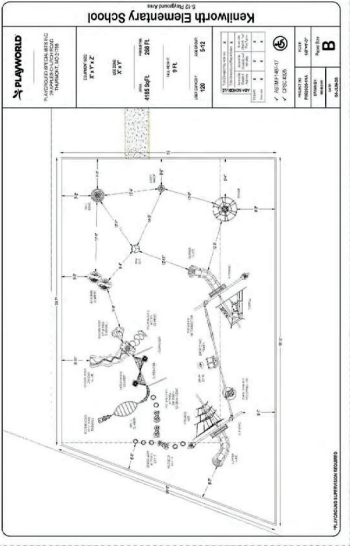
Kenilworth Elementary School
5-12 Playground Area



Kenilworth Elementary School
2-5 Playground Area



Kenilworth Elementary School
2-5 Playground Area



PERMIT SET SUBMISSION

06/22/20
THESE PLANS ARE ISSUED FOR AGENCY REVIEW. ALL
CONSTRUCTION SHALL BE IN ACCORDANCE WITH THE
APPROVED PERMIT. ANY CHANGES MUST BE
APPROVED BY THE AGENCY BEFORE CONSTRUCTION.
PERMIT APPROVED FOR CONSTRUCTION. PLANS
WILL BE RE-EVALUATED AS THE CONSTRUCTION
PROCESS BY ALL
PERMIT HOLDERS.

MISS UTILITY
CALL 811 OR 202-265-7177
OR VISIT www.dc.gov/811
BEFORE YOU DIG
Know what's below. 48 HOURS BEFORE YOU DIG
Call before you dig.



DCRA STAMP

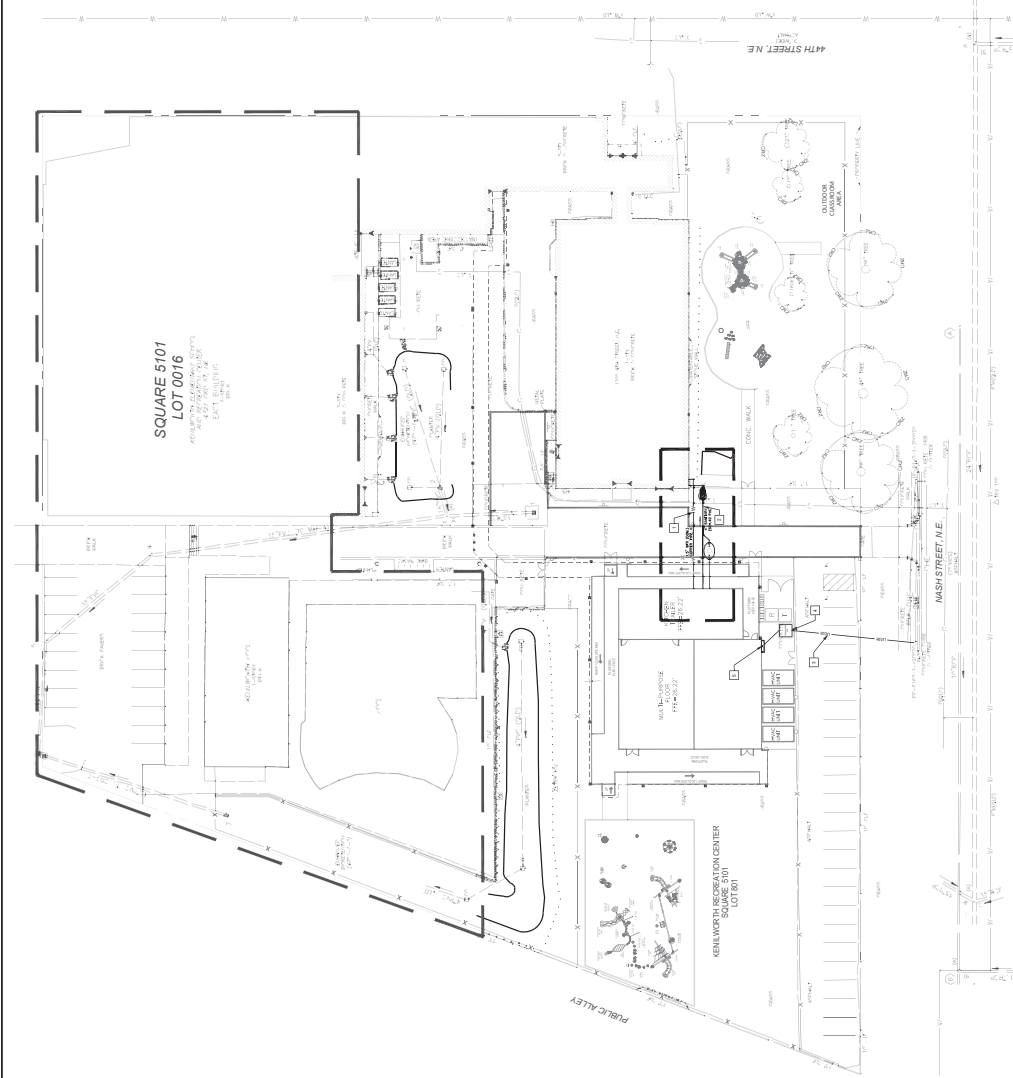


UTILITY LEGEND
 1" WPC (S) TYPE 5
 12" SANITARY (S)
 12" SANITARY (S)

WATER SERVICE
SANITARY SEWER
ELECTRIC SERVICE
SANITARY CLEANOUT

SITE UTILITY PLAN LEGENDS

- 1 PROP. 12" WATER
- 1.5" WATER SERVICE TO MODULAR KITCHEN
- EXIST. BACKFLOW PREVENTER TO REMAIN
- EXIST. WATER METER TO REMAIN
- EXIST. 4" WATER SERVICE TO REMAIN
- MODULAR TRAILER AND PENETRATION TO EXISTING BUILDING
- 2 PROP. 4" SANITARY SEWER
- 4" SCH. 40 PVC SANITARY SEWER LATERAL TO BUILDING
- EXIST. 4" SANITARY SEWER TO REMAIN
- DUALX SEWAGE EJECTOR PUMP
- SCH. 40 SANITARY CLEANOUTS (TYP 2)
- REFER TO MEP DWGS FOR CONNECTION HOOKUP @ MODULAR TRAILER AND PENETRATION TO EXISTING BUILDING
- 3 PROP. TWO-WAY PRIMARY CONCRETE ENCASED DUCTBANK
- EXIST. TWO-WAY PRIMARY CONCRETE ENCASED DUCTBANK TO REMAIN
- REFER TO MECHANICAL DWGS FOR CONNECTION HOOKUP @ PROPERTY LINE - SEE MEP DWGS FOR ADDITIONAL INFORMATION.
- 4 PROP. PEFCO PAD MOUNTED TRANSFORMER - SEE MEP DWGS FOR ADDITIONAL INFORMATION.
- 5 PROP. PEFCO METER - SEE MEP DWGS FOR ADDITIONAL INFORMATION.



UTILITY PLAN NOTES

1. THIS PLAN DEPICTS 'NET UTILITY (SANITARY, STORM, WATER) WORK. DUCTBANK, TELEPHONES, TELECOMMUNICATIONS) WORK SHOWN IN THESE DWGS IS FOR INFORMATION AND SHOWN FOR INFORMATION PURPOSES ONLY.
2. WATER, STORM SEWER, AND SANITARY SEWER UTILITY WORK IN PUBLIC SPACE, INCLUDING ABANDONMENT OF EXISTING SERVICE LINES, SHALL BE IN ACCORDANCE WITH ALL APPLICABLE STANDARDS. REFER TO DC WATER GENERAL CONSTRUCTION NOTES.
3. ALL EXISTING FEATURES ARE NOT NECESSARILY DEPICTED ON THIS PLAN. SEE EXISTING CONDITIONS SHEETS.
4. LOCATIONS OF EXISTING UTILITIES ARE APPROXIMATE AND BASED UPON AVAILABLE RECORDS. CONTRACTOR SHALL LOCATE AND CONFIRM ALL UTILITIES PRIOR TO UNDERTAKING ANY DEMOLITION OR EXCAVATION.
5. REFER TO CIVIL COVER SHEET FOR ADDITIONAL NOTES.



PERMIT SET SUBMISSION
 06/22/20
 THESE PLANS ARE ISSUED FOR AGENCY REVIEW. ALL COMMENTS AND REVISIONS MUST BE OBTAINED PRIOR TO CONSTRUCTION.
 FINAL APPROVAL FOR CONSTRUCTION SHALL BE OBTAINED FROM THE DISTRICT OF COLUMBIA PERMITS AND APPROVAL PROCESS BY ALL APPLICABLE AGENCIES.

DANIEL CURRY ARCHITECT



BUILDER:
 WKW SOLUTIONS, LLC
 3001 17TH NW SUITE 600
 WASHINGTON, DC 20006
 (202) 462-6688

CIVIL SURVEY ENGINEER:
 ENGINEERS AND SURVEYORS
 1016 STREET, NE SUITE 430
 WASHINGTON, DC 20002
 (202) 293-6558

STRUCTURAL ENGINEER:
 800 STREET STRUCTURAL ENGINEERS
 800 STREET, NW
 WASHINGTON, DC 20001
 (202) 462-7228

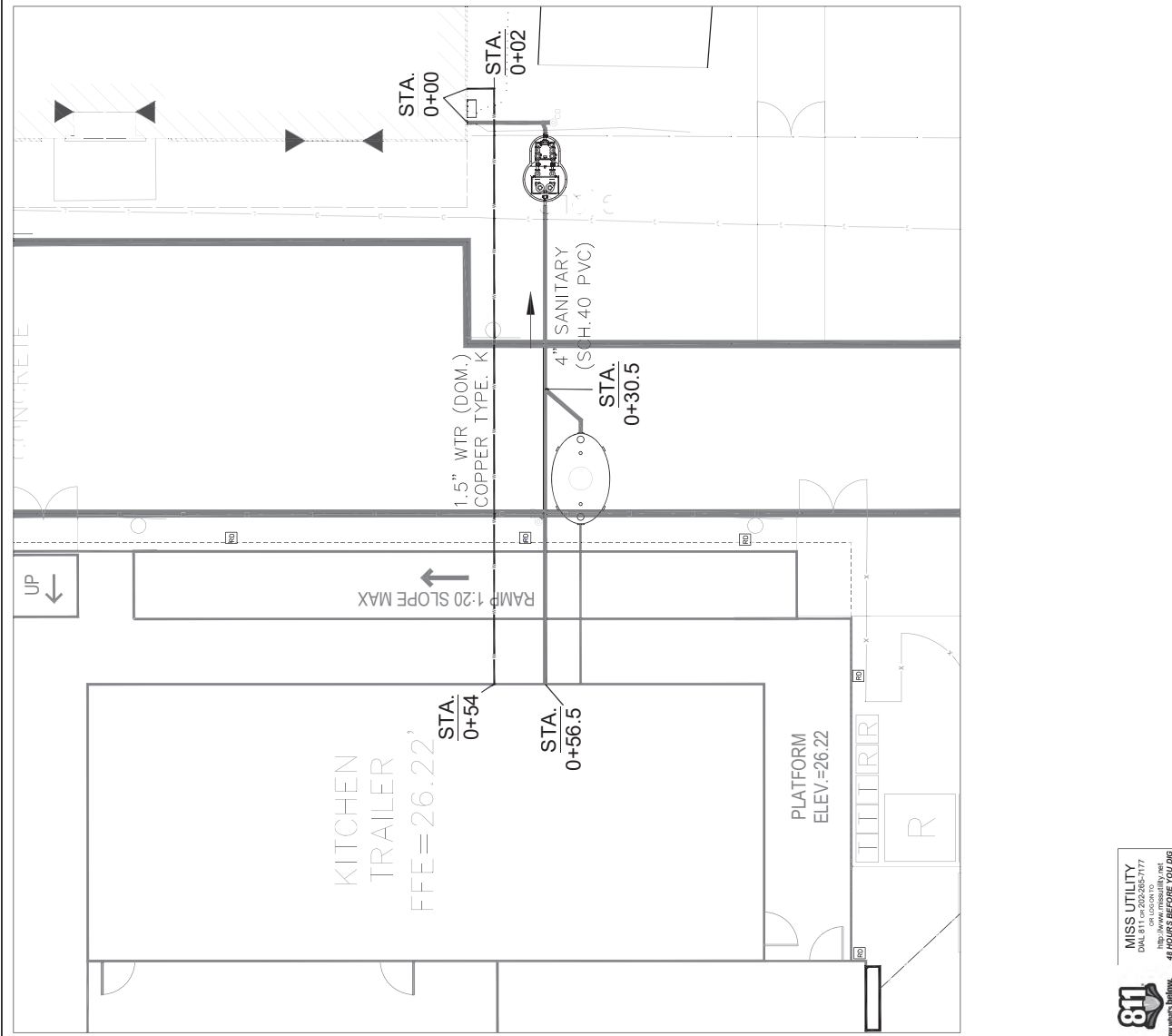
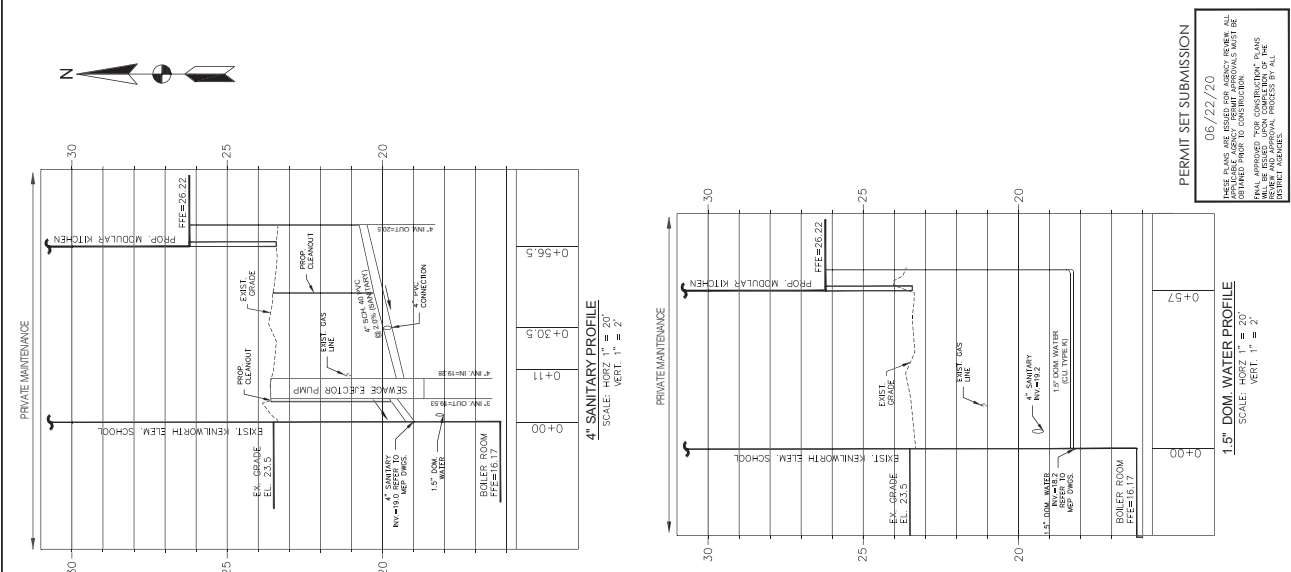
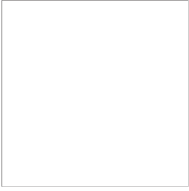
MEP ENGINEER:
 GLOBAL ENGINEERING SOLUTIONS OF WASHINGTON DC
 3001 17TH NW SUITE 600
 WASHINGTON, DC 20006
 (202) 462-7748

no.	date	description
1	06/22/20	ISSUED FOR AGENCY REVIEW

KENILWORTH ELEMENTARY SCHOOL
 project number: 202003
 date: 22 June, 2020

SITE UTILITY PLAN
CIV400

811
 MISS UTILITY
 DIAL 811 or 202-265-7177
 OR LOGON TO
 MISS.DC.GOV
 Know what's below. 48 HOURS BEFORE YOU DIG.
 Call before you dig.



MISS UTILITY
DAL 811 or 202-265-7177
OR LOCATE TO
NEW YORK STATE
48 HOURS BEFORE YOU DIG
Call before you dig.

DCRA STAMP

DANIEL CURRY ARCHITECT

BUILDER: WPKM SOLUTIONS
1001 17th St NW Suite 600
Washington, DC 20006
(202) 892-6988

CIVIL SURVEY ENGINEER: WPKM SOLUTIONS
1001 17th St NW Suite 600
Washington, DC 20006
(202) 892-6988

STRUCTURAL ENGINEER: GLOBE ENGINEERING SOLUTIONS OF WASHINGTON DC
1001 17th St NW Suite 600
Washington, DC 20006
(202) 892-7748

MEP ENGINEER: GLOBE ENGINEERING SOLUTIONS OF WASHINGTON DC
1001 17th St NW Suite 600
Washington, DC 20006
(202) 892-7748

PROJECT NUMBER: 202003
DATE: 22 June, 2020

KENILWORTH ELEMENTARY SCHOOL
UTILITY PROFILES
CIV405

PERMIT SET SUBMISSION
06/22/20
PLEASE PRINT AND SIGN FOR AGENCY REVIEW. ALL PERMITS MUST BE OBTAINED PRIOR TO CONSTRUCTION.
PRIN. APPROVED: YOUR CONSTRUCTION PLANS WILL BE REVIEWED AND APPROVED THROUGH THE PERMITTING PROCESS BY ALL APPLICABLE AGENCIES.