

Attachment A.2

Attachment A.2.1

West Education Specifications Part 1



**West Elementary School
Modernization Program
Prepared: June 22, 2017**

School: West Elementary School
Address: 1338 Farragut St NW
Grades Served: PK3-8 (current); PK3-5 (post modernization)
SY17-18 Enrollment: 315 students
Future Student Enrollment: 557 students

West Education Campus, located in Ward 4, is an education campus that serves students in Prekindergarten (age 3) through grade 8. The middle school grades will begin phasing out of the building beginning in School Year 2018-2019. After the modernization, the school will serve students in Prekindergarten (age 3) through grade 5. In 2017-2018 West's enrollment was 315 students in a building that has yet to receive any major modernization project. The current building is an open plan school with limited natural light into the building.

After reviewing student demand, cohort retention, and the DC Office of Planning population projections the DCPS student enrollment team expects enrollment to grow to 553 students by School Year 2025-2026. The projections and design to capacity include an expansion of the PK3 and PK4 offerings that could potentially come from a larger boundary. One requirement of this design would be to cluster the PK3 and PK4 classrooms and provide them with a dedicated, separate entrance from the rest of the school. The Prekindergarten section should be part of the overall facility, but another requirement would be to have the design allow for the Prekindergarten section of the building to be separated off from the rest of the facility.

A Feasibility Study was performed for this project in Spring 2018 to evaluate the site constraints and condition of the existing facilities. It also evaluated the new educational specification program against the site and existing facility. In addition to this analysis, the study included several potential design solutions for expanding the school for the new modernization to meet the new educational specifications. DCPS explored the following scenarios as part of the study:

- Option One: Renovation of the existing structure
- Option Two: Renovation of existing structure with an addition
- Option Three: Demolition of existing structure and new construction.

At the end of the study, DCPS determined that Option One, the option that only renovates the existing structure, should be ruled out as a viable path forward. However, no final design option was chosen to move forward between Options Two and Three. As part of the full modernization design the new Design Team will be required to review the Feasibility Study and further investigate potential conceptual solutions for the full modernization.

As the Design Team explores different options, if modifications to the program are necessary due to the site constraints, the design team should review and make recommendations to DCPS. One of the biggest challenges for this project is addressing the large grade change from one end of the site to the other. DCPS expects the design solution to address the building's relationship to the various grades. The school community and School Improvement Team (SIT) as part of the Feasibility Study also raised the importance of the modernization design addressing proper site circulation, entrances into the site, how the building responds to traffic concerns, and keeping the outdoor play spaces as contiguous as possible.



**DISTRICT OF COLUMBIA
PUBLIC SCHOOLS**

Enrollment	557	School Type	Elementary
Lunch Periods	3	Staff	60
Title One	No		
Count of TS	35		
100% Efficient Capacity	614	Other	Other Drop Down
Total SQFT	89,296	Other	Other Drop Down

Academic Spaces

Space	Description	Qty	Size	Total
E-ACA-1	Pre-S/Pre-K	8	1025	8,200
E-ACA-1a	Kindergarten/Grade 1 Classroom	6	1025	6,150
E-ACA-1b	Pre-S/Pre-K/Kindergarten/Grade 1 Classroom storage	14	100	1,400
E-ACA-2	Early Childhood/Montessori	Optional	1125	0
E-ACA-3	Pre-S/Pre-K/Kindergarten/Grade 1 Restroom	14	60	840
E-ACA-4	Early Elementary Resource / Small Group Room	0	0	0
E-ACA-5	Outdoor Storage - Early Childhood	1	0	0
E-ACA-6	Grades 2-5 Classroom	13	900	11,700
E-ACA-7	Specials Lab	1	1000	1,000
E-ACA-8	Discovery Commons Activity Area	1	2000	2,000
E-ACA-9	Resource / Small Group Room	6	360	2,160
E-ACA-10	Self-Contained Classroom Grades 2-5	1	900	900
E-ACA-10a	Self-Contained Classroom Grades Pre-S - 1	1	1025	1,025
E-ACA-10b	Self-Contained Classroom Grades Pre-S - 1 restroom	1	60	60
E-ACA-10c	Self-Contained Classroom Grades Pre-S - 1 storage	1	100	100
E-ACA-11	OT / PT	2	450	900
E-ACA-12	Speech / OT / PT shared storage	2	150	300
E-ACA-13	Independent Area	1	75	75
E-ACA-14	Special Education Coordinator Office	1	150	150
E-ACA-15	Teacher Collaboration Room	3	300	900
E-ACA-16	General classroom storage	1	200	200
E-ACA-16a	Leveled reading storage room	1	300	300
E-ACA-16b	Laptop cart storage	3	75	225
E-ACA-17	Outdoor Classroom	1	0	0
E-ACA-18	Garden	1	Garden Size	Garden Size
E-ACA-19	Speech	1	150	150
E-ACA-20	Specials Office/Storage	1	250	250
Sub-Total				38,985

Library Spaces

Space	Description	Qty	Size	Total
E-LIB-1	Reading/Learning/Circulation Room	1	2800	2,800
E-LIB-2	Makerspace	1	500	500
E-LIB-3	Small Group Room	2	150	300
E-LIB-4	Combined Office / Workroom	1	400	400
E-LIB-5	Conference Room	1	250	250
Sub-Total				4,250

Visual Arts

Space	Description	Qty	Size	Total
E-VA-1	Art Lab	1	1000	1,000
E-VA-2	Kiln Room	1	60	60
E-VA-3	Art Storage	1	150	150
Sub-Total				1,210

Performing Arts Spaces

Space	Description	Qty	Size	Total
E-PA-1	General Music Room	1	900	900
E-PA-2	General Music Storage	1	250	250
Sub-Total				1,150

Physical Education Spaces

Space	Description	Qty	Size	Total
E-PE-1	Gymnasium	1	4600	4,600
E-PE-2	Stage (optional)	1	700	700
E-PE-3	Office	1	225	225
E-PE-4	Gym Storage	1	400	400
E-PE-5	Chair Storage	1	175	175
E-PE-6	Bicycle Storage	1	250	250
E-PE-7	Outdoor Storage	1	0	0
E-PE-8	Playgrounds	2	0	0
Sub-Total				6,350

Admin Spaces

Space	Description	Qty	Size	Total
E-AD-1	Entrance Lobby	Gross Up	Gross Up	-
E-AD-2	Welcome Center	1	579	579
E-AD-3	Security Area	1	75	75
E-AD-4	Conference Room	1	200	200
E-AD-5	Principal's Office	1	200	200
E-AD-6	Administrative Office	3	150	450
E-AD-7	Administrative Workroom	1	400	400
E-AD-8	Records Room	1	150	150
E-AD-9	Parent Resource Center	1	200	200
E-AD-10	Counselor's Office	2	150	300
E-AD-11	Student Services	2	150	300
E-AD-12	Student Services Conference	1	200	200
E-AD-13	After School Program Office	1	300	300
E-AD-14	Staff Lounge	1	400	400
E-AD-15	Wellness / Lactation Room	1	150	150
Sub-Total				3,904

Health Services Spaces

Space	Description	Qty	Size	Total
E-HS-1	Waiting Area	1	150	150
E-HS-2	Treatment Area	1	150	150
E-HS-3	Cots	1	100	100
E-HS-4	Office	1	100	100
E-HS-5	Storage	1	25	25
E-HS-6	Toilet	1	50	50
Sub-Total				575

Student Dining Spaces

Space	Description	Qty	Size	Total
E-SD-1	Student Dining Area	1	2971	2,971
E-SD-2	Multipurpose	0	2971	0
E-SD-3	Stage (optional)	0	700	0
E-SD-4	Chair / Table Storage	1	225	225
E-SD-5	Kitchen / Food Preparation	1	650	650
E-SD-6	Serving Area	1	400	400
E-SD-7	Dry Food Storage	1	350	350
E-SD-8	Freezer / Cooler	1	250	250
E-SD-9	Ware Washing	1	200	200
E-SD-10	Cleaning Storage	1	60	60
E-SD-11	Food Service Office	1	150	150
E-SD-12	Toilet / Lockers	1	150	150
Sub-Total				5,406

Building Services

Space	Description	Qty	Size	Total
E-BS-1	Supply Storage	1	150	150
E-BS-2	Toilet/Shower/Locker Room	1	150	150
E-BS-3	Custodial / DGS Office	2	150	300
E-BS-4	Large Group Restrooms	Included in Gross Up		-
E-BS-5	Custodial Closet	9	25	225
E-BS-6	Electrical Closet	Included in Gross Up		-
E-BS-7	MDF room	1	200	200
E-BS-7a	IDF room	3 minimum	100	300
E-BS-8	Corridors	Included in Gross Up		-
E-BS-9	Mechanical/Electrical Space/Decks			-
E-BS-10	Custodial Equipment Storage	1	300	300
E-BS-11	Central Storage Area	1	557	557
E-BS-12	Receiving Area	1	150	150
E-BS-13	Staff Restroom	Gross Up	65	-
E-BS-14	Family Restroom	Gross Up	65	-
E-BS-15	Technology Storage	Included in Gross Up		-
E-BS-16	Laundry Room	1	80	80
Sub-Total				2,412

Building Subtotal
Building Gross-up
Building Total Sq. Ft.

64,242
39%
25,054
89,296



**ELEMENTARY SCHOOL
PROTOTYPE PROGRAM**



TABLE OF CONTENTS

TABLE OF CONTENTS



ACADEMIC CORE AREA

E-ACA	Space Program	8
E-ACA	Adjacency Diagram	9
E-ACA-1	Pre-S / Pre-K / Kindergarten / Grade 1 Classroom	10
E-ACA-2	Early Childhood / Montessori	14
E-ACA-3	Pre-S / Pre-K / Kindergarten / Grade 1 Restroom	18
E-ACA-4	Early Elementary Resource / Small Group Room	20
E-ACA-5	Outdoor Storage - Early Childhood	22
E-ACA-6	Grades 2-5 Classroom	24
E-ACA-7	Project / Science Lab	28
E-ACA-8	Discovery Commons Activity Area	30
E-ACA-9	Resource / Small Group Room	32
E-ACA-10	Self-Contained Classroom	34
E-ACA-11	Speech / OT/PT	38
E-ACA-12	Speech / OT/PT Storage	40
E-ACA-13	Independent Area	42
E-ACA-14	Special Education Coordinator Office	44
E-ACA-15	Teacher Collaboration Room	46
E-ACA-16	Textbook / Cart Storage	48
E-ACA-17	Outdoor Classroom	50
E-ACA-18	Garden	52

LIBRARY

E-LIB	Space Program	56
E-LIB	Adjacency Diagram	57
E-LIB-1	Reading / Learning / Circulation Room	58
E-LIB-2	Makerspace	62
E-LIB-3	Small Group / Conference Room	64
E-LIB-4	Combined Office / Workroom	66
E-LIB-5	Device Charging Room	68

VISUAL ARTS

E-VA	Space Program	72
E-VA	Adjacency Diagram	73
E-VA-1	Art Lab	74
E-VA-2	Kiln Room	76
E-VA-3	Art Storage	78

PERFORMING ARTS

E-PA	Space Program	82
E-PA	Adjacency Diagram	83
E-PA-1	General Music Room	84
E-PA-2	General Music Storage	86

PHYSICAL EDUCATION

E-PE	Space Program	90
E-PE	Adjacency Diagram	91
E-PE-1	Gymnasium	92

E-PE-2	Stage	94
E-PE-3	Office	96
E-PE-4	Storage	98
E-PE-5	Chair Storage	100
E-PE-6	Bicycle Storage	102
E-PE-7	Outdoor Storage	104
E-PE-8	Playgrounds	106

ADMINISTRATIVE SPACES

E-AD	Space Program	110
E-AD	Adjacency Diagram	111
E-AD-1	Entrance Lobby	112
E-AD-2	Welcome Center	114
E-AD-3	Security Area	116
E-AD-4	Conference Room	118
E-AD-5	Principal's Office	120
E-AD-6	Administrative Office	122
E-AD-7	Administrative Workroom	124
E-AD-8	Records Room	126
E-AD-9	Parent Resource Center	128
E-AD-10	Counselor's Office	130
E-AD-11	Student Services	132
E-AD-12	Student Services Conference	134
E-AD-13	After School Program Office	136
E-AD-14	Staff Lounge	138
E-AD-15	Wellness / Lactation Room	140

TABLE OF CONTENTS (continued)

HEALTH SERVICES

E-HS	Space Program	144
E-HS	Adjacency Diagram	145
E-HS-1	Waiting Area	146
E-HS-2	Treatment Area	148
E-HS-3	Cots	150
E-HS-4	Office	152
E-HS-5	Storage	154
E-HS-6	Toilet	156

STUDENT DINING

E-SD	Space Program	160
E-SD	Adjacency Diagram	161
E-SD-1	Student Dining Area	162
E-SD-2	Multipurpose	163
E-SD-3	Stage	168
E-SD-4	Chair / Table Storage	170
E-SD-5	Kitchen / Food Preparation	172
E-SD-6	Serving Area	174
E-SD-7	Dry Food Storage	176
E-SD-8	Freezer / Cooler	178
E-SD-9	Ware Washing	180
E-SD-10	Cleaning Storage	182
E-SD-11	Food Service Office	184
E-SD-12	Toilet / Lockers	186

BUILDING SERVICES

E-BS	Space Program	190
E-BS	Adjacency Diagram	191
E-BS-1	Supply Storage	192
E-BS-2	Toilet / Shower / Locker Room	194
E-BS-3	Custodial / DGS Office	196
E-BS-4	Large Group Restrooms	198
E-BS-5	Custodial Closet	200
E-BS-6	Electrical Closet	202
E-BS-7	Telecommunications Room	204
E-BS-8	Corridors	206
E-BS-9	Mechanical / Electrical Space / Decks	208
E-BS-10	Custodial Equipment Storage	210
E-BS-12	Central Storage Area	212
E-BS-13	Receiving Area	214
E-BS-14	Staff Restroom	216
E-BS-15	Family Restroom	218
E-BS-16	Technology Storage	220
E-BS-17	Laundry Room	222

PAGE INTENTIONALLY BLANK

E-ACA /// **ACADEMIC CORE AREA**

PRE-S/PRE-K/KINDERGARTEN/1ST GRADE
CLASSROOM

EARLY CHILDHOOD MONTESSORI CLASSROOM
(OPTIONAL)

PRE-S/PRE-K/KINDERGARTEN/1ST GRADE
RESTROOM

EARLY ELEMENTARY RESOURCE / SMALL GROUP
ROOM

OUTDOOR STORAGE-EARLY CHILDHOOD
GRADES 2-5 CLASSROOM

PROJECT LAB / SCIENCE LAB

DISCOVERY COMMONS ACTIVITY AREA
RESOURCE / SMALL GROUP ROOM

SELF-CONTAINED CLASSROOM

SPEECH / OT / PT

SPEECH / OT / PT STORAGE

INDEPENDENT AREA

SPECIAL EDUCATION COORDINATOR OFFICE

TEACHER COLLABORATION ROOM

TEXTBOOK / CART STORAGE

OUTDOOR CLASSROOM

GARDEN

SPACE	325 STUDENTS			400 STUDENTS			500 STUDENTS			700 STUDENTS		
	QTY	SF	TOTAL	QTY	SF	TOTAL	QTY	SF	TOTAL	QTY	SF	TOTAL
ACADEMIC CORE AREA												
Pre-S/Pre-K/Kindergarten /1st Grade Classroom	7	1,125	7,875	9	1,125	10,125	10	1,125	11,250	13	1,125	14,625
Early Childhood Montessori**	--	1,125	--	--	1,125	--	--	1,125	--	--	1,125	--
Pre-S/Pre-K/Kindergarten/ Restroom	7	50	750	9	50	750	10	50	700	13	50	700
Early Elementary Resource/ Small Group Room	2	450	350	2	450	450	2	450	500	2	450	650
Outdoor Storage-Early Childhood	1	200	200	1	200	200	1	200	200	1	200	200
Grades 2-5 Classroom	8	900	7,200	8	900	7,200	12	900	10,800	16	900	14,400
Project Lab/Science Lab	1	1,000	1,000	1	1,000	1,000	1	1,000	1,000	1	1,000	1,000
Discovery Commons Activity Area	1	1,625	1,625	1	2,000	2,000	1	2,500	2,500	1	3,500	3,500
Resource/Small Group Room	3	360	1,080	4	360	1,440	5	360	1,800	7	360	2,520
Self Contained Classroom	1	900	900	1	900	900	2	900	1,800	2	900	1,800
Speech/OT/PT	2	450	900	2	450	900	2	450	900	3	450	1,350
Speech/OT/PT Storage	2	150	300	2	150	300	2	150	300	3	150	450
Independent Area*	1	75	75	1	75	75	1	75	75	1	75	75
Special Education Coordinator Office	3	150	450	3	150	450	3	150	450	3	150	450
Teacher Collaboration Room	3	300	900	4	300	1,200	4	300	1,200	5	300	1,500
Textbook/Cart Storage	5	200	1,000	5	200	1,000	5	200	1,000	5	200	1,000
Outdoor Classrooms	1	900	900	1	900	900	1	900	900	1	900	900
Garden**	--	--	--	--	--	--	--	--	--	--	--	--
TOTAL			25,255			28,640			35,375			45,320

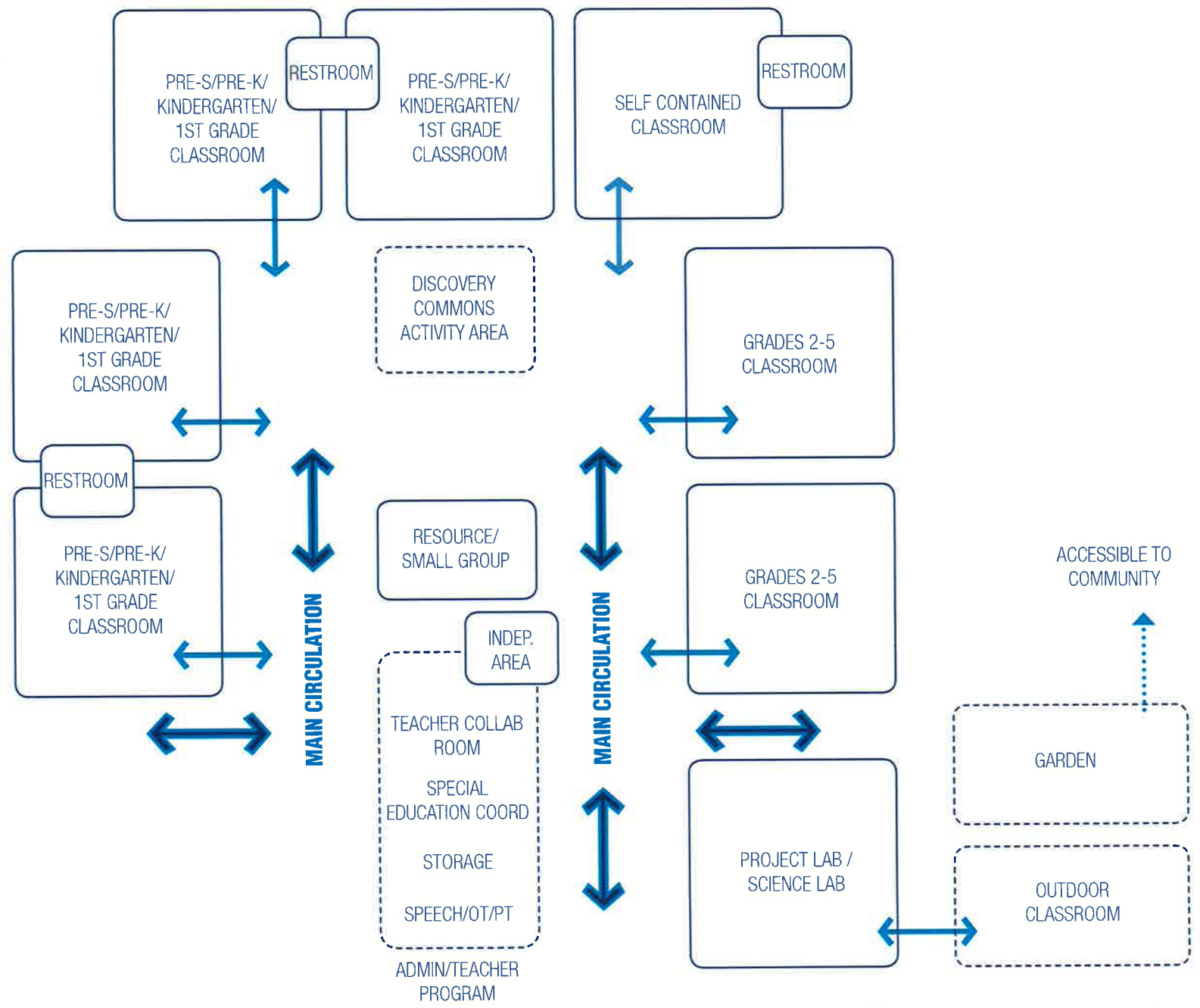
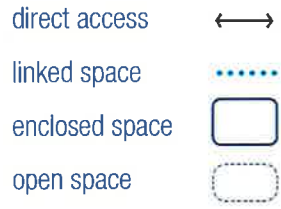
Comments //

*Independent Areas must be provided for certain Special Education programs. If these Special Education programs are not offered at a particular school, these areas are not required. The determination to include or exclude these programs will be made during the site-specific Ed Spec process.

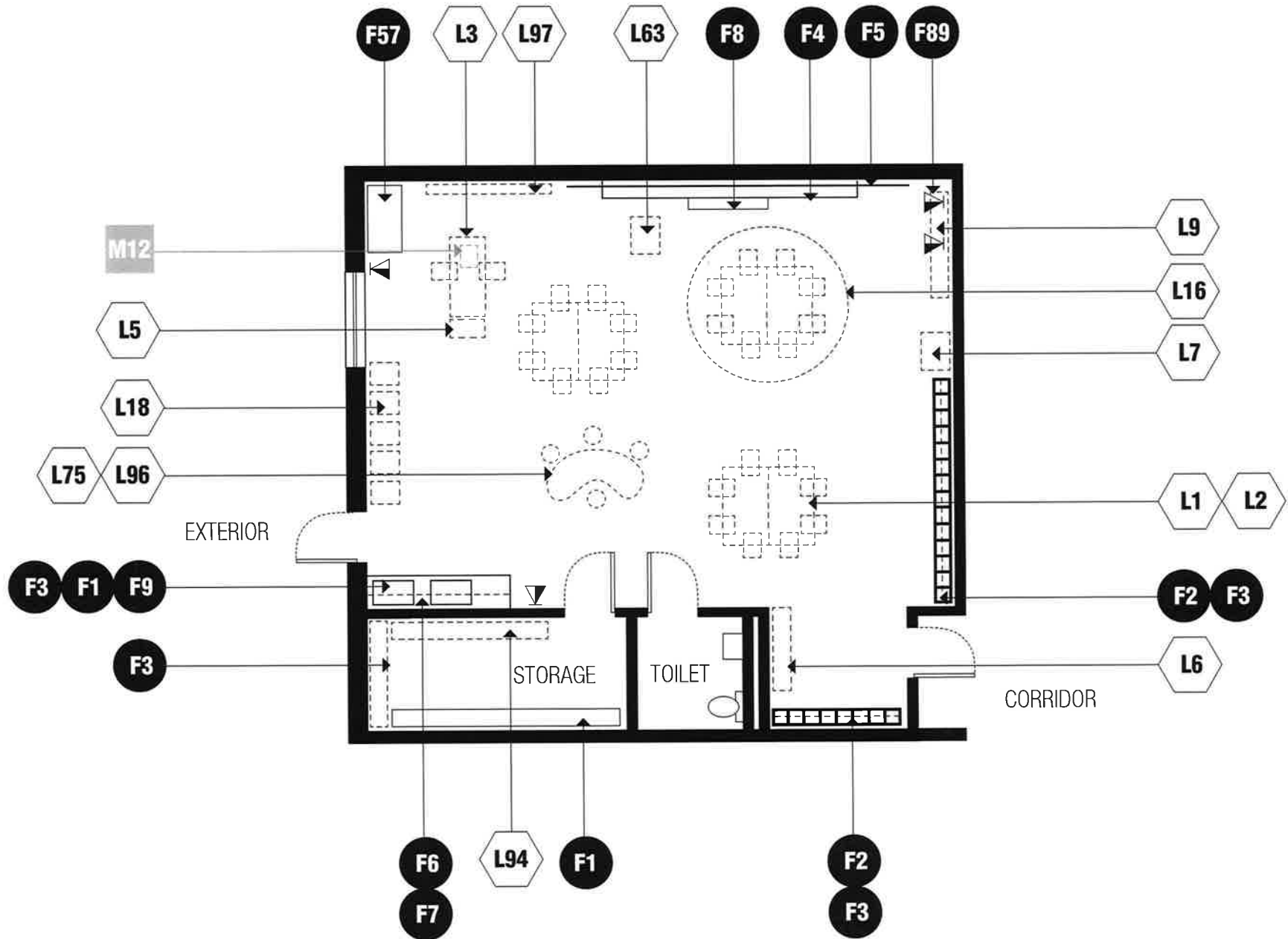
**This space is optional. The inclusion of this space will be determined during the site-specific Ed Spec process and approved by DCPS.

Note: In this document, staff assumptions were made to ensure staff spaces were approximately correct at each capacity model. Specific square footage requirements and quantity of spaces will be completed during the site specific ed spec process. Assumptions for the capacity model are:

325 students : 51 staff; 400 students : 57 staff; 500 students : 66 staff; 700 students: 81 staff.



ACADEMIC CORE AREA ADJACENCY DIAGRAM



E-ACA-1 /// PRE-S / PRE-K / KINDERGARTEN / 1ST GRADE CLASSROOM

size

1,125 SF

capacity/users

16-25 students

2 teachers

parents/aides/staff members

ancillary spaces

pre-s/pre-k/kindergarten/1st grade

restroom (E-ACA-3)

storage closet

spatial relationships

access to outside if possible

group classrooms for potential teaming

designate area for cot storage (stacked)

locate coat cubbies near door

locate at first floor for emergency

evacuations if possible

centers in the classroom may include:

housekeeping

blocks

library / books

writing table

art

sand and water tables

goals

to foster self-discipline, independence,
and responsibility

to help children develop positive concepts
about themselves and their

capabilities

to encourage and develop independent
thinking and good work habits

to develop language as a tool of learning
and as a means of communication

to provide and develop fundamental
academic, social, emotional, physical,
and thinking skills

activities

whole group

teacher directed

small group

one-on-one instruction

cooperative learning

discovery

language arts

inquiry

environmental considerations

windows to provide natural light and egress

adequate ventilation

electrical outlets for equipment

environmental sound control

uniform and controllable lighting

proportion classroom for effective viewing

and listening from all areas of the

classroom

window treatment to darken room for AV

presentation

consider placement of one-way mirrors to

observe early childhood students
from adjacent space - a small
observation room could be placed

between each pair of classrooms
with visual access to both rooms

lite in door for visual access and
security purposes

● LEGEND ///

fixed furnishings

F1 base/wall cabinets and shelving (12-24 LF above and below sinks, lockable)

F2 student cubbies (24-30, 11"W x 13"D x 12"H, can double stack as long as they remain at student height)

F3 wall shelving (30"-36" height, lockable)

F4 marker board (6 LF minimum)

F5 tackable/magnetic wall surface (6 LF minimum)

F6 soap dispenser

F7 towel dispenser

F8 wall-mounted interactive electronic presentation device

F9 classroom sink with bubbler

▶ F57 30" itinerant / aid station

F89 data drop



loose furnishings

L1 stackable/nesting chairs (25)

L2 stackable/nesting tables (4-5)

L3 teacher work surface with mobile storage and two chairs

L5 four drawer lateral file cabinet

L6 mobile shelving (various)

L7 teacher's lockable wardrobe (18"x18")

L9 sand/water table, kitchen, art cart, etc.

L16 bound group rug (1)

L18 lounge chairs (5)

L63 resource media cart (optional)

L75 kidney table

L94 flat storage

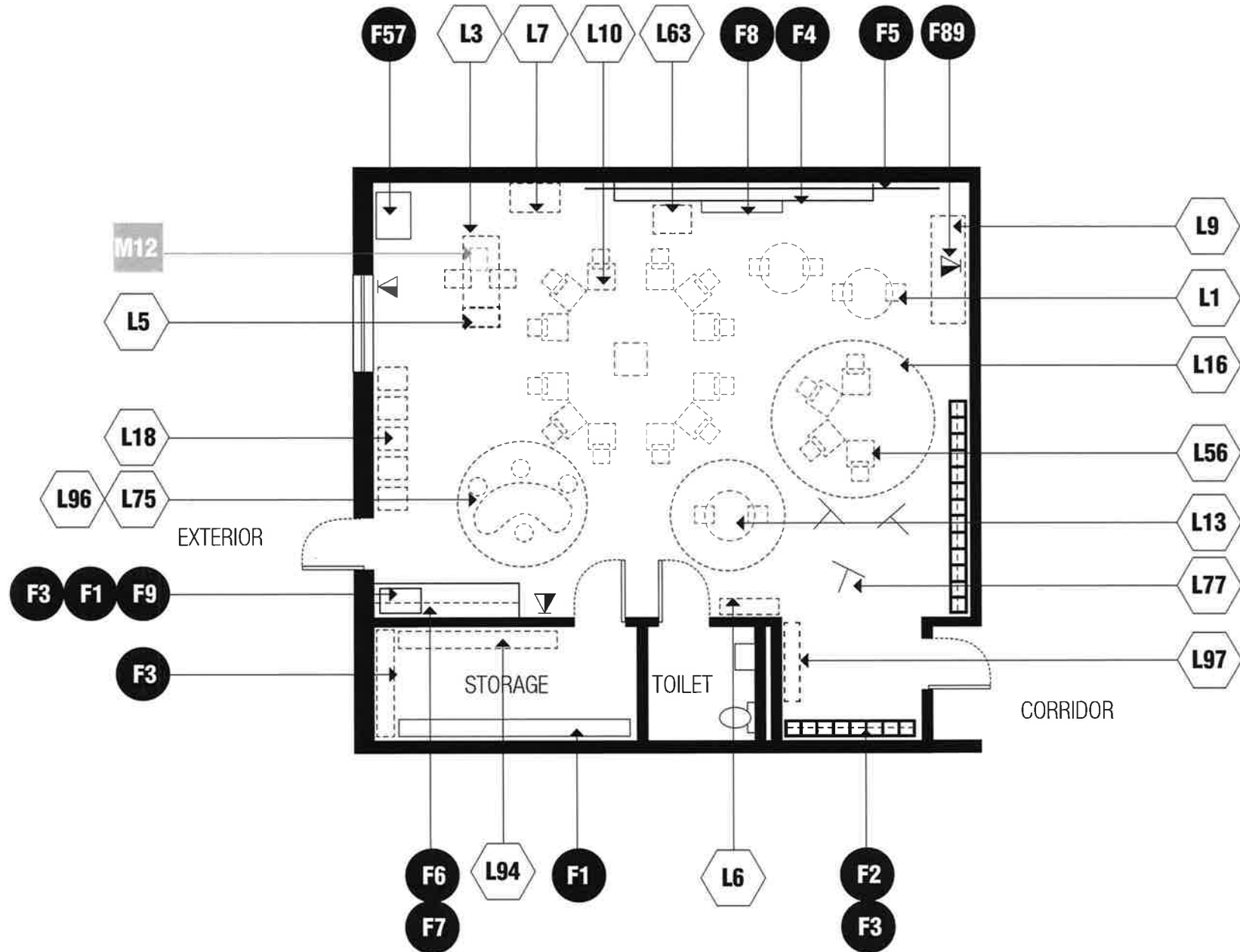
L96 kidney table stool (3-5)

L97 bookcase (25 LF)

■ **AV & IT equipment**

M12 laptop computer

This Page Intentionally Left Blank



E-ACA-2 /// EARLY CHILDHOOD / MONTESSORI

size

1,125 SF

capacity/users

16-25 students

2 teachers

parents/staff members/aides

ancillary spaces

pre-s/pre-k/kindergarten/1st grade

restroom (E-ACA-3)

storage closet

spatial relationships

near corridor

near media center

near workroom/teacher office

group classrooms for potential teaming

locate cubbies near student work area

locate coat cubbies near door

locate at first floor for emergency
evacuations if possible

goals

to foster self-discipline, independence,
and responsibility

to help children develop positive concepts
about themselves and their
capabilities

to encourage and develop independent
thinking and good work habits

to develop language as a tool of learning
and as a means of communication

to provide and develop fundamental
academic social, emotional, physical,

and thinking skills

activities

whole group

teacher directed

small group

one-on-one instruction

cooperative learning

discovery

language arts

inquiry

environmental considerations

windows to provide natural light and egress
adequate ventilation

electrical outlets for equipment

environmental sound control

uniform and controllable lighting

proportion classroom for effective viewing
and listening from all areas of the
classroom

consider placement of one-way mirrors to
observe early childhood students
from adjacent space - a small
observation room could be placed
between each pair of classrooms with
visual access to both rooms

window treatment to darken room for AV
presentation

lite in door for visual access and security

LEGEND ///

● fixed furnishings

- F1 base/wall cabinets and shelving (12-24 LF, above and below sinks, lockable)
- F2 student cubbies (24-30, 11"W x 13"D x 12"H, can double stack as long as they remain at student height)
- F3 wall shelving (30"-36" height, lockable)
- F4 marker board (6 LF minimum)
- F5 tackable / magnetic wall surface (6 LF minimum)
- F6 soap dispenser
- F7 towel dispenser
- F8 wall mounted interactive electronic presentation device
- F9 classroom sink with bubbler
- F57 30" intinerant / aid station
- ▶ F89 data drop

○ loose furnishings

- L1 stackable/nesting chairs (25)
- L56 trapezoid desks

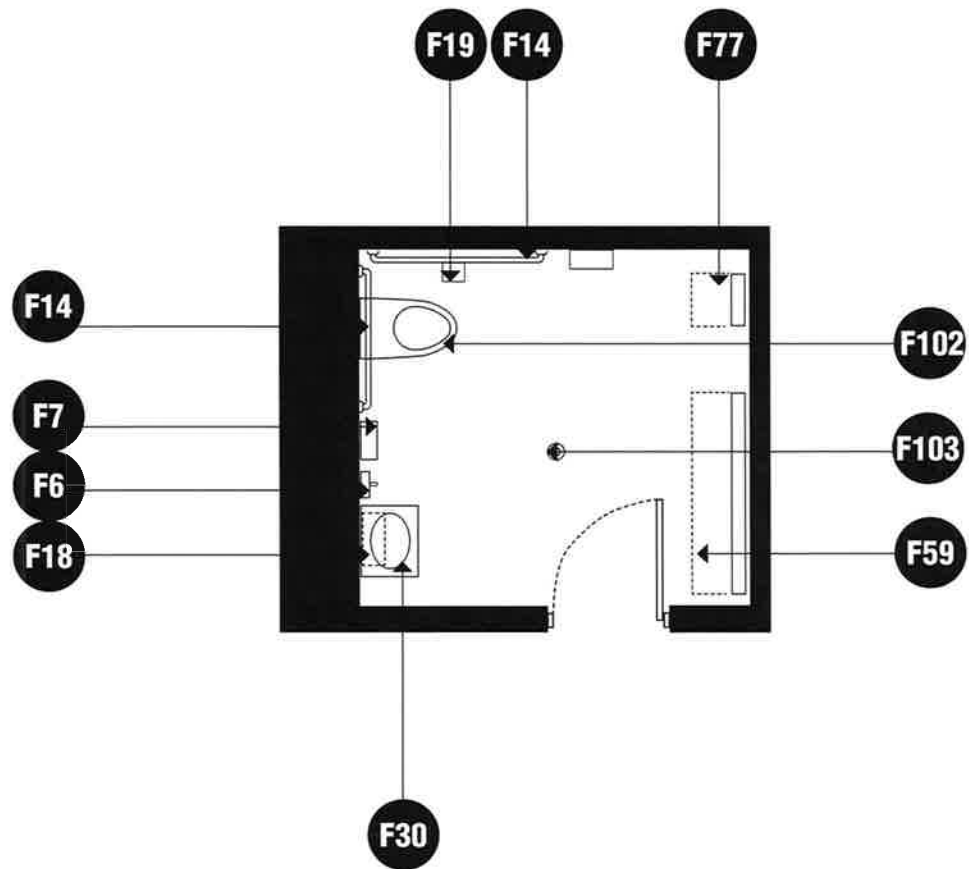
purposes

- L3 teacher work surface with mobile storage and two chairs
- L5 four drawer lateral file cabinet
- L6 mobile shelving (various)
- L7 teacher's lockable wardrobe (18"x18")
- L9 sand/water table, kitchen, art cart, etc
- L10 student desks
- L13 small tables (3: handwashing, practical life, and snacks)
- L16 bound group rug (3: group area, block area, and reading area)
- L18 lounge chairs (5)
- L63 resource media cart (optional)
- L75 kidney table
- L77 art easels (3-5)
- L94 flat storage
- L96 kidney table stool (3-5)
- L97 bookcase (25 LF)

■ AV & IT equipment

- M12 Laptop computer

This Page Intentionally Left Blank



E-ACA-3 /// PRE-S / PRE-K / KINDERGARTEN / 1ST GRADE RESTROOM

size

50 SF

capacity/users

1 student

ancillary spaces

pre-s/pre-k/kindergarten/1st grade
classroom (E-ACA-1)
early childhood montessori (E-ACA-2)

spatial relationships

n/a

goals

to provide age appropriate private health
space

activities

private health needs

environmental considerations

environmental sound control
uniform and controllable lighting

● LEGEND ///

fixed furnishings

- F6 soap dispenser
- F7 towel dispenser
- F14 grab bars (36" and 42")
- F18 mirror
- F19 toilet tissue holder
- F30 bathroom sink
- F59 changing table
- F77 mounted child seat
- F102 toilet
- F103 floor drain

*age appropriate sizing



loose furnishings

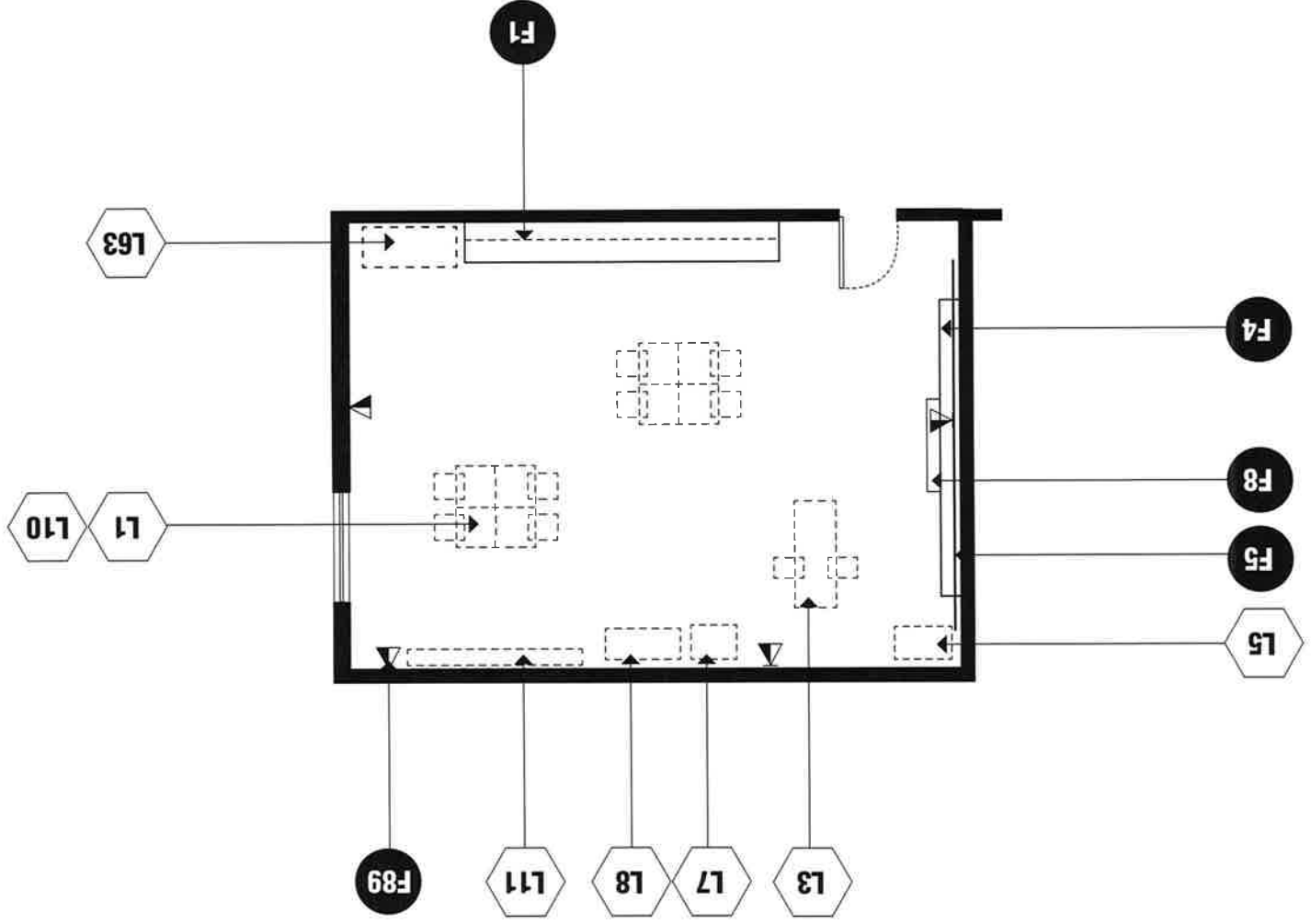
n/a



AV & IT equipment

n/a

E-ACA-4 /// EARLY ELEMENTARY RESOURCE / SMALL GROUP ROOM



size

450 SF

capacity/users

8-10 students

2 staff members

ancillary spaces

n/a

spatial relationships

located within academic core areas

goal

a flexible space to accommodate a variety of individualized and specialized instruction for a variety of academic disciplines.

activities

small group work

independent instruction and work

reading, math, speech, etc.

one-on-one instruction

environmental considerations

windows to provide natural light and egress

adequate ventilation

electrical outlets for equipment

environmental sound control

uniform and controllable lighting

proportion classroom for effective viewing and listening from all areas of the classroom

window treatment to darken room for AV presentation

lite in door for visual access and security purposes

LEGEND ///**● fixed furnishings**

F1 base/wall cabinets and shelving (lockable)

F4 marker board (on two walls, 6 LF minimum each)

F5 tackable/magnetic wall surface (6 LF minimum)

F8 wall-mounted interactive electronic presentation device

▶ F89 data drop

◊ loose furnishings

L1 stackable/nesting chairs (8-10)

L3 teacher work surface with mobile storage and two chairs

L5 four drawer lateral file cabinet

L7 teacher's lockable wardrobe (18"X18")

L8 tall cabinet with shelves

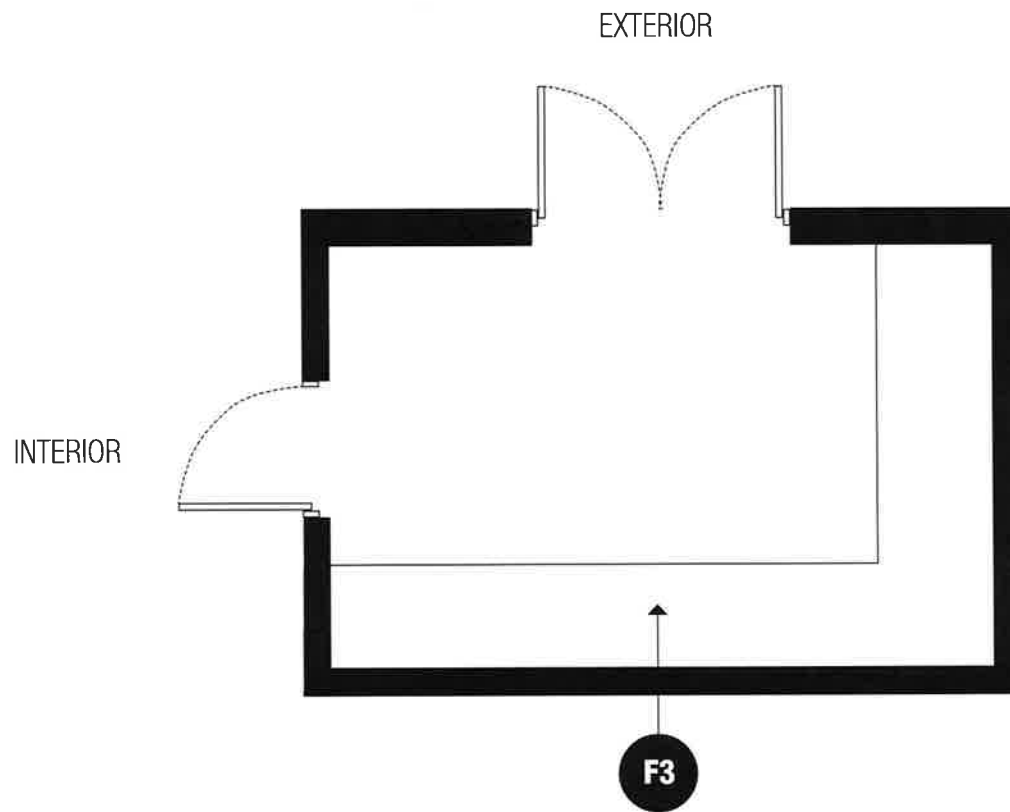
L10 student desks (8-10)

L11 adjustable height bookshelves

L63 resource media cart (optional)

■ AV & IT equipment

n/a



E-ACA-5 /// OUTDOOR STORAGE - EARLY CHILDHOOD

size

200 SF

capacity/users

2 staff members

ancillary spaces

n/a

spatial relationships

direct access to outdoors

near early childhood classrooms

direct access to interior corridor

goal

to provide storage for outdoor play
equipment and supplies

activities

storage of portable outdoor play
equipment

environmental considerations

uniform and controllable lighting
proper ventilation as necessary

LEGEND ///

● **fixed furnishings**

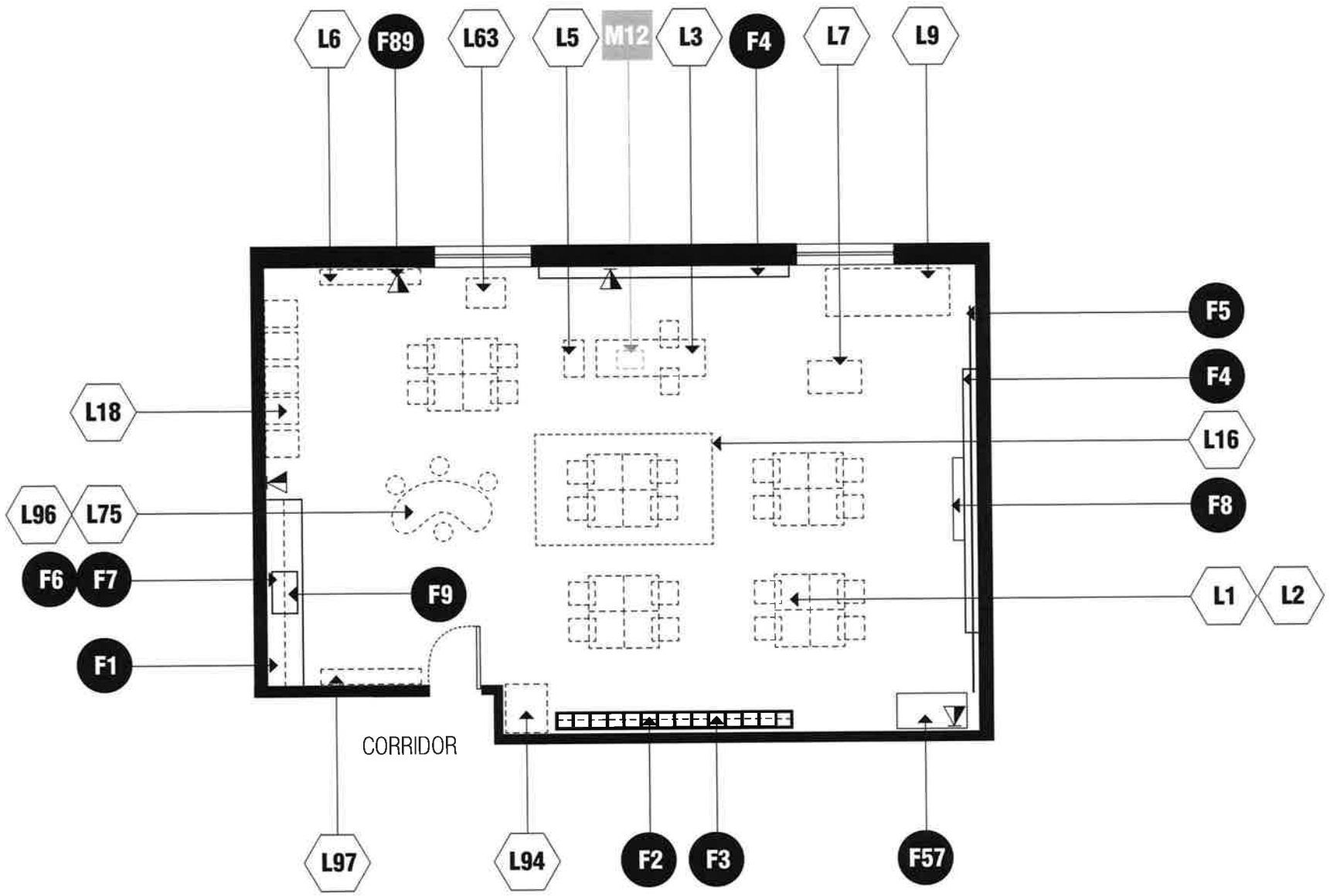
F3 wall shelving (10'-16' total - 84" high, 12",
24", or 30" deep)

◻ **loose furnishings**

n/a

■ **AV & IT equipment**

n/a



E-ACA-6 /// GRADES 2 - 5 CLASSROOM

size

900 SF

capacity/users

20-25 students

1 teacher

staff members

guest speakers/volunteers

ancillary spaces

n/a

spatial relationships

group classrooms for the engagement of student collaboration

this space addresses student's individual needs, interest and learning styles

located coat cubbies near door

located near bathrooms

two teaching/learning walls with student height marker boards and technology infrastructure

goal

a flexible and adaptable space designed as a learning centered environment that accommodates any of the core academic disciplines and supports frequent reconfiguration.

activities

large group instruction

small group instruction and group work

one-on-one instruction

individualized and differentiated work

computer instruction

team teaching

oral presentations

testing

environmental considerations

windows to provide natural light and egress

adequate ventilation

electrical outlets for equipment

environmental sound control

uniform and controllable lighting

proportion classroom for effective viewing and listening from all areas of the classroom

window treatment to darken room for AV presentation

lite in door for visual access and security purposes

LEGEND ///

● **fixed furnishings**

F1 base/wall cabinets and shelving (12-24

LF, above and below sinks, lockable)

F2 student cubbies (24-30, 11"W x 13"D

x 12"H, can double stack as long as they remain at student height)

F3 wall shelving (30"-36" height, lockable)

F4 marker board (6 LF minimum)

F5 tackable/magnetic surface (6 LF minimum)

F6 soap dispenser

F7 towel dispenser

F8 wall-mounted interactive electronic presentation device

F9 classroom sink with bubbler

F57 30" itinerant / aid station

▶ F89 data drop

○ **loose furnishings**

L1 stackable/nesting chairs (25)

L2 stackable/nesting tables (4-5)

L3 teacher work surface with mobile storage and two chairs

L5 four drawer lateral file cabinet

L6 mobile shelving (various)

L7 teachers lockable wardrobe (18"x18")

L9 sand/water table, kitchen, art cart, etc

L16 bound group rug (1)

L18 lounge chairs (5)

L63 resource media cart (optional)

L75 kidney table

L94 flat storage

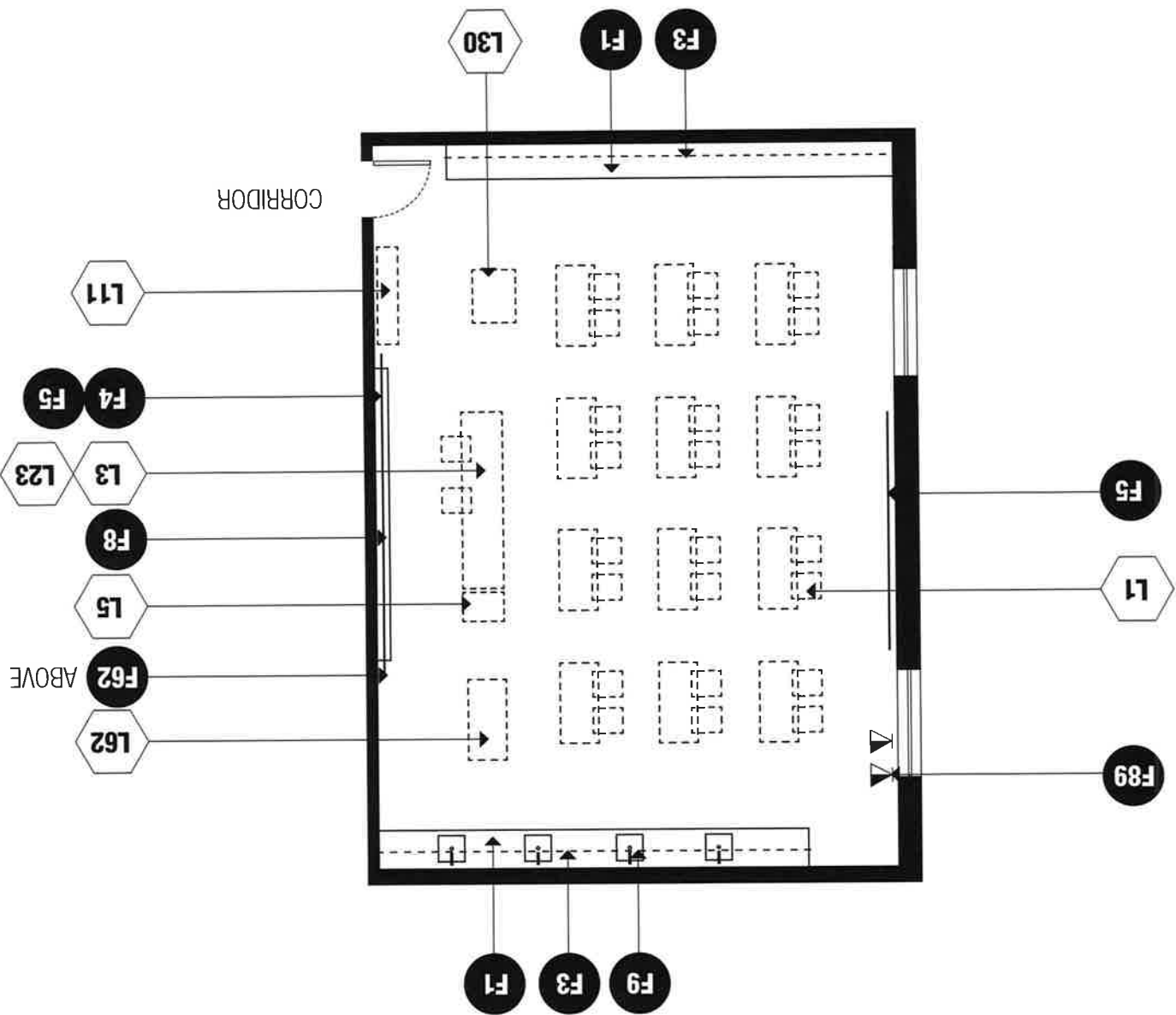
L96 kidney table stool (3-5)

L97 bookcase (25 LF)

■ **AV & IT equipment**

M12 laptop computer

This Page Intentionally Left Blank



size

1,000 SF

capacity/users

20-25 students

1 teacher

staff members

guest speakers/volunteers

ancillary spaces

n/a

spatial relationships

near academic core classrooms

near main corridor

near media center

near workroom/teacher office

adjacent to centralized storage

goals

to create an instructional space located in each academic area available on a scheduled basis by department or team of teachers

activities

direct instruction

research

student and class projects

cooperative learning groups

student display

teleconferencing

dry science

use of home chemicals

discovery

inquiry

environmental considerations

windows to provide natural light and egress

adequate ventilation

environmental sound control

uniform and controllable lighting

proportion classroom for effective viewing and listening from all areas of the classroom

window treatment to darken room for AV presentation

lite in door for visual access and security purposes

LEGEND ///**● fixed furnishings**

F1 base/wall cabinets and shelving (100 LF of base cabinets, 30" wall cabinets above all base cabinets, lockable)

F3 wall shelving (lockable)

F4 marker board (on 2 walls, 6 LF minimum each)

F5 tackable/magnetic wall surface (6 LF minimum)

F8 wall mounted interactive electronic presentation device

F9 classroom sink with bubbler

F62 sound enhancement system

▶ F89 data drop

◊ loose furnishings

L1 stackable/nesting chairs

L3 teacher work surface with mobile storage and two chairs

L5 four drawer lateral file cabinet

L11 adjustable height bookshelves

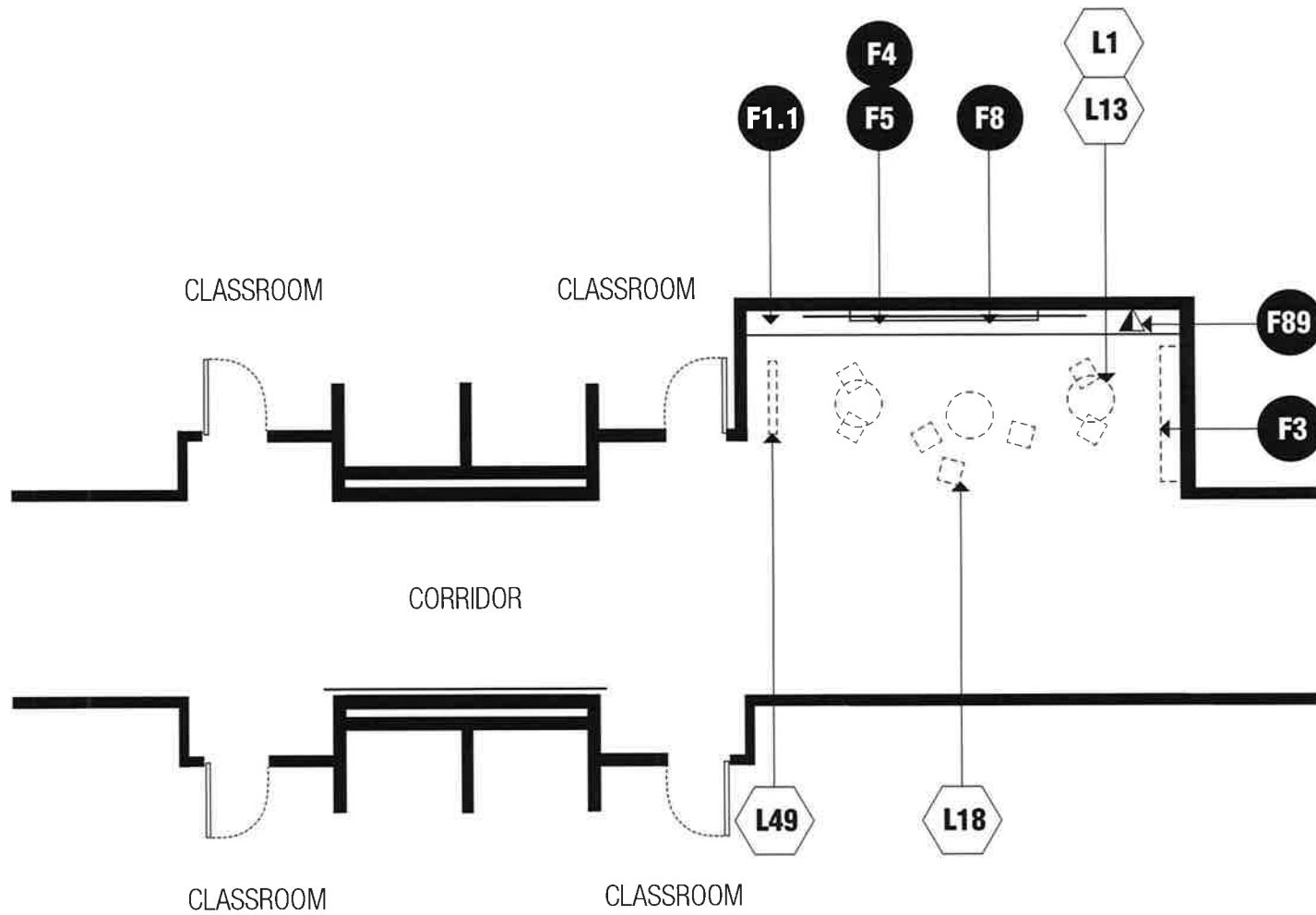
L23 computer desk return

L30 mobile a/v cabinet

L62 two person adjustable table on casters

■ AV & IT equipment

n/a



E-ACA-8 /// DISCOVERY COMMONS ACTIVITY AREA

size

1,625-3,500 SF (distributed throughout school)

capacity/users

4-25 students
1-2 teachers

ancillary spaces

n/a

spatial relationships

integrated into circulation
located within classroom clusters

goal

to provide flexible, shared learning support space for various group sizes and activities

activities

collaborative learning centers
story telling
team activities
individual activities
small presentation/performance space

environmental considerations

uniform and controllable lighting
environmental sound control
coordinate commons finishes and loose furnishings with corridors
coordinate plumbing/HVAC/electrical/technology needs with building's overall technology plan
provide borrowed lites for visual supervision from adjacent areas

LEGEND ///

● fixed furnishings

TBD - based on age and school preference, may include:

F1.1 casework (countertops)

F3 wall shelving (lockable)

F4 marker board (6 LF minimum)

F5 tackable/magnetic wall surface (6 LF minimum)

F8 wall mounted interactive electronic presentation device (optional)

▶ F89 data drop

◻ loose furnishings

mixture of the following to support multiple learning activities in multiple learning configurations:

L1 stackable/nesting chairs

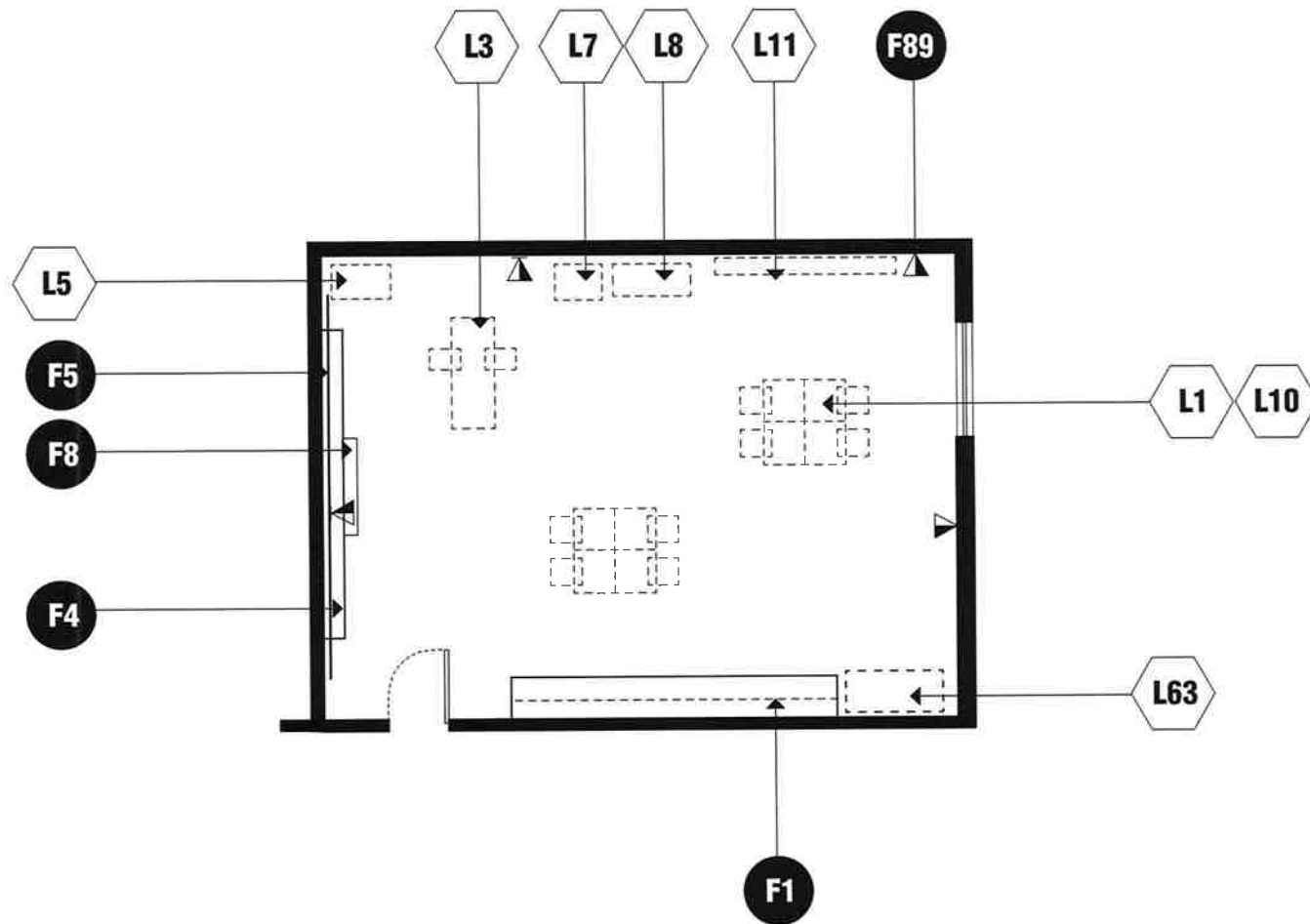
L13 small table(s)

L18 lounge chairs

L49 movable marker board

■ AV & IT equipment

n/a



E-ACA-9 /// RESOURCE / SMALL GROUP ROOM

size

360 SF

capacity/users

8-10 students

2 staff members

ancillary spaces

n/a

spatial relationships

located within academic core areas

goal

provide a flexible space to accommodate a variety of individualized and specialized instruction for a variety of academic disciplines

activities

small group work

independent instruction and work

reading, math, speech, etc.

one-on-one instruction

environmental considerations

windows to provide natural light and egress

adequate ventilation

electrical outlets for equipment

environmental sound control

uniform and controllable lighting

proportion classroom for effective viewing and listening from all areas of the classroom

window treatment to darken room for AV presentation

lite in door for visual access and security purposes

LEGEND ///

● **fixed furnishings**

F1 base/wall cabinets and shelving (lockable)

F4 marker board (on 2 walls, 6 LF minimum each)

F5 tackable/magnetic wall surface (6 LF minimum)

F8 wall-mounted interactive electronic presentation device

▶ F89 data drop

◻ **loose furnishings**

L1 stackable/nesting chairs (8-10)

L3 teacher work surface with mobile storage and two chairs

L5 four drawer lateral file cabinet

L7 teacher's lockable wardrobe (18"X18")

L8 tall cabinet with shelves

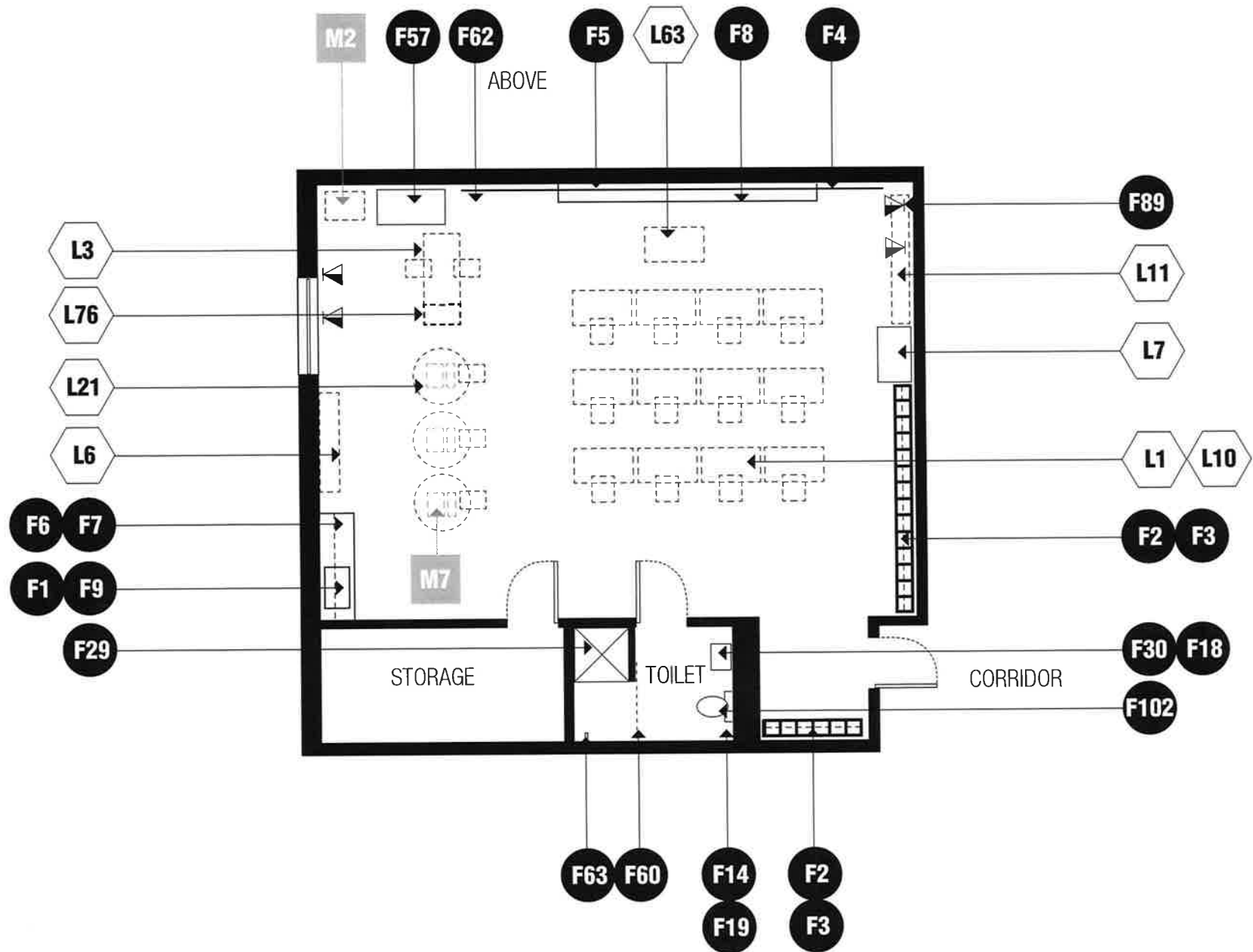
L10 student desks (8-10)

L11 adjustable height bookshelves

L63 resource media cart (optional)

■ **AV & IT equipment**

n/a



E-ACA-10 /// SELF CONTAINED CLASSROOM

size

900 SF

capacity/users

2 staff members

10-12 students

ancillary spaces

individual restroom with shower (optional)

storage closet

*every school needs a minimum of one
specials needs suite (classroom,
storage closet, and independent area)
additional special needs classrooms
do not require restrooms or
independent areas

spatial relationships

near bus drop-off

near health clinic

elevator access

toilet access (CIC-clean intermittent
catheterization, with shower)

accessible ingress / egress to the building
and classroom areas

locate at first floor for emergency access

located and integrated within the
academic core area

goal

provide an appropriate learning
environment for students who have
physical, emotional, or educational
needs requiring a self-contained
space for part or all of the day

activities

small group instruction and group work

independent work

individual instruction

environmental considerations

environmental sound control

uniform and controllable lighting

electrical outlets for equipment

general room exhaust (restroom only)

adequate ventilation

proportion classroom for effective viewing
and listening from all areas of the
classroom

windows to provide natural light and
egress

window treatment to darken room for AV
presentation

lite in door for visual access and security
purposes

LEGEND ///

● **fixed furnishings**

F1 base/wall cabinets and shelving (lockable)

F2 student cubbies (10-15, 11"W x 13"D
x 12"H, can double stack as long as they
remain at student height)

F3 wall shelving

F4 marker board (on 2 walls, 6 LF minimum)

F5 tackable/magnetic wall surface (6 LF
minimum)

F6 soap dispenser

F7 towel dispenser

F8 wall-mounted interactive electronic
presentation device

F9 classroom sink with bubbler

F14 grab bars (36" and 42")

F18 mirror

F19 toilet tissue holder

F29 ADA shower accessories

F30 bathroom sink

F57 30" itinerant/aid station

F60 shower curtain / rod

F62 sound enhancement system

F63 towel hook

▶ F89 data drop

F102 toilet

○ **loose furnishings**

L1 stackable/nesting chairs (13-17)

L3 teacher work surface with mobile storage
and two chairs

L6 mobile shelving (various)

L7 teachers lockable wardrobe (18"x18")

L10 student desks (10-12)

L11 adjustable height bookshelves

L21 work table (round) (3)

L63 resource media cart (optional)

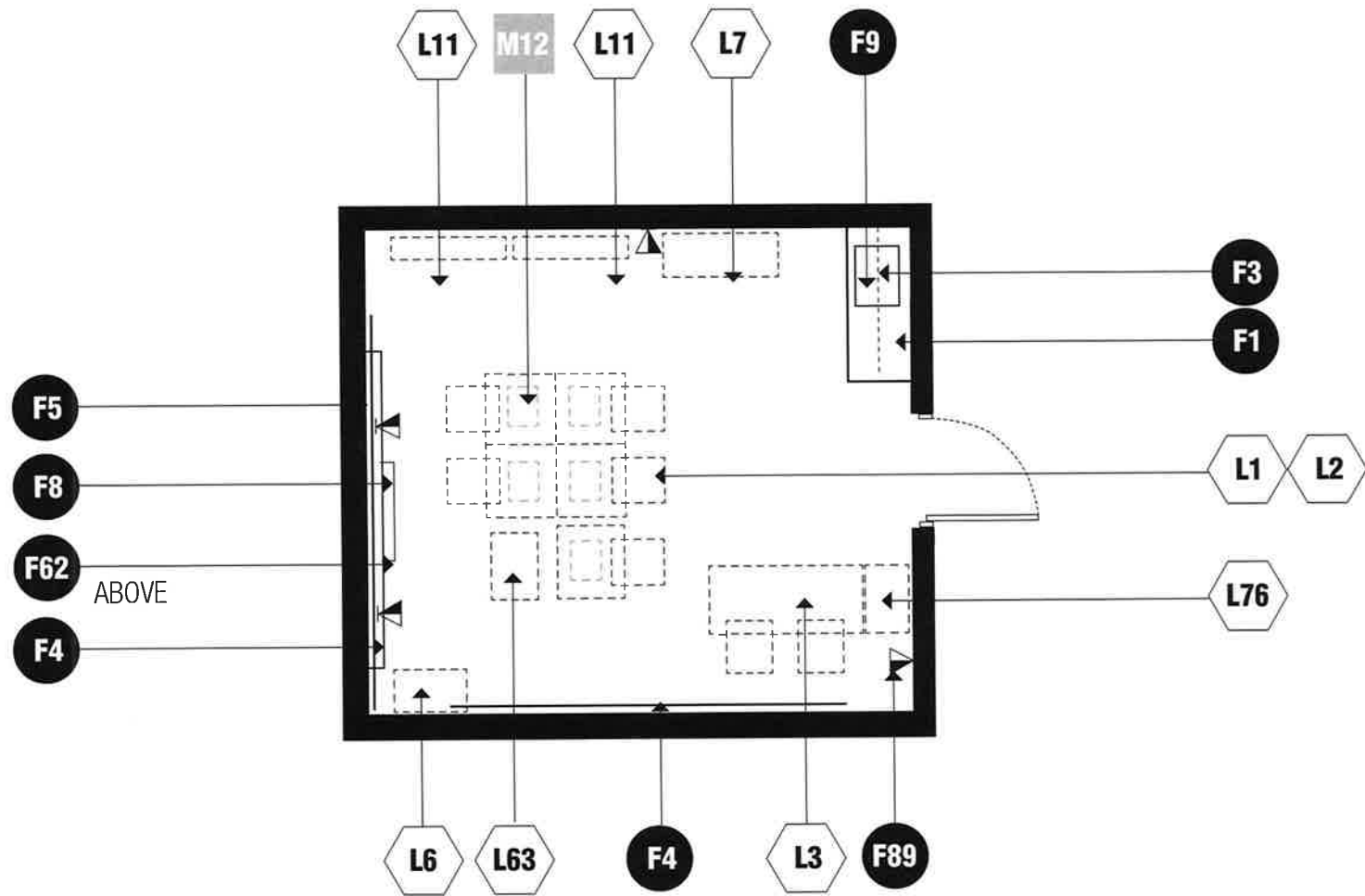
L76 filing cabinet

■ **AV & IT equipment**

M2 color printer

M7 desktop computer (3-5)

This Page Intentionally Left Blank



E-ACA-11 /// SPEECH / OT / PT

size

450 SF

capacity/users

2-3 students

2 staff members

ancillary spaces

speech/ot/pt storage (E-ACA-12)

spatial relationships

near bus drop-off

near health clinic

elevator access

accessible ingress/egress to the building
and classroom areas

located and integrated within the
academic core area

locate at first floor for emergency
evacuations

goal

provide an appropriate learning
environment for students participating
in speech, occupational, and physical
therapy

activities

small group instruction and group work
independent work
individual instruction

environmental considerations

uniform and controllable lighting
adequate ventilation
windows to provide natural light and

egress

environmental sound control

electrical outlets for equipment

proportion classroom for effective viewing
and listening from all areas of the
classroom

window treatment to darken room for AV
presentation

lite in door for visual access and security
purposes

LEGEND ///**● fixed furnishings**

F1 base/wall cabinets and shelving (lockable)

F3 wall shelving

F4 marker board (on 2 walls, 6 LF minimum
each)

F5 tackable/magnetic wall surface (6 LF
minimum)

F8 wall mounted interactive electronic
presentation device

F9 classroom sink with bubbler

F62 sound enhancement system

▶ F89 data drop

◻ loose furnishings

L1 stackable/nesting chairs (5)

L2 stackable/nesting tables (5)

L3 teacher work surface with mobile
storage and two chairs

L6 mobile shelving (various)

L7 teachers lockable wardrobe (18"x18")

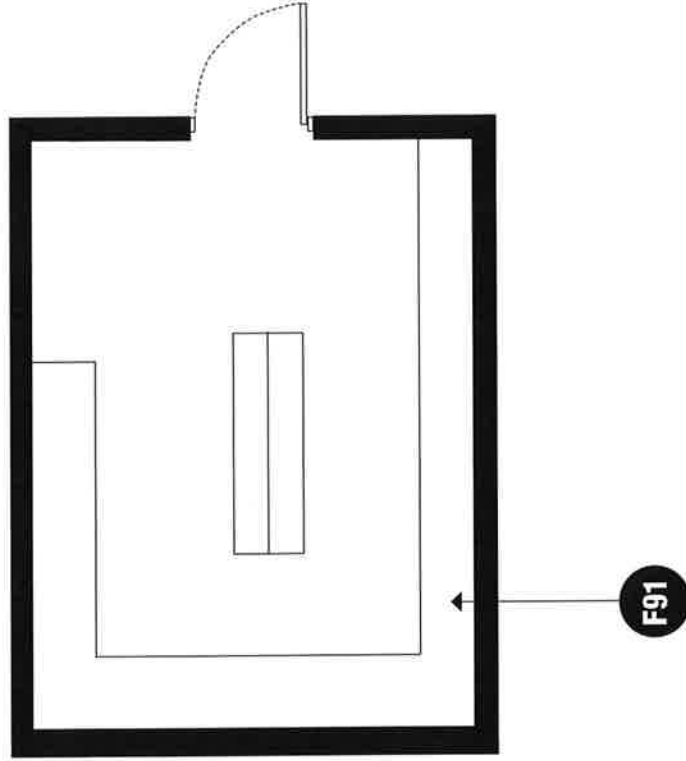
L11 adjustable height bookshelves

L63 resource media cart (optional)

L76 filing cabinet (lockable)

■ AV & IT equipment

M12 laptop computers (3-5)



E-ACA-12 /// SPEECH / OT / PT STORAGE

size

150 SF

capacity/users

1-2 staff members

ancillary spaces

speech/ot/pt (E-ACA-11)

spatial relationships

near academic core classrooms
near special needs classrooms

goal

provide storage space for occupational
and physical therapy apparatus and
supplies

activities

storage of therapy apparatus and supplies

environmental considerations

uniform and controllable lighting
electrical outlets for equipment

LEGEND ///

● **fixed furnishings**

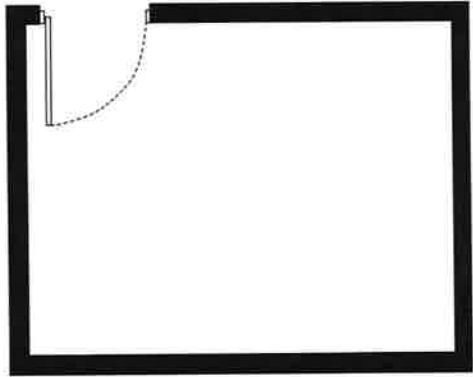
F91 storage shelving 24" deep

◻ **loose furnishings**

n/a

■ **AV & IT equipment**

n/a



E-ACA-13 /// **INDEPENDENT AREA**

size

75 SF

capacity/users

1 student

1 staff member

ancillary spaces

n/a

spatial relationships

across hallway from self contained

classroom

goals

to provide a safe setting to calm agitated students

activities

a quiet space for emotional students

one-on-one instruction

quiet reflection space

environmental considerations

soft lighting

environmental sound control

views into independent area from the main

instruction area via lite in door (shatter

proof glass or flexion)

auditory privacy

no padding

floor drains

doors are not lockable

LEGEND ///

● **fixed furnishings**

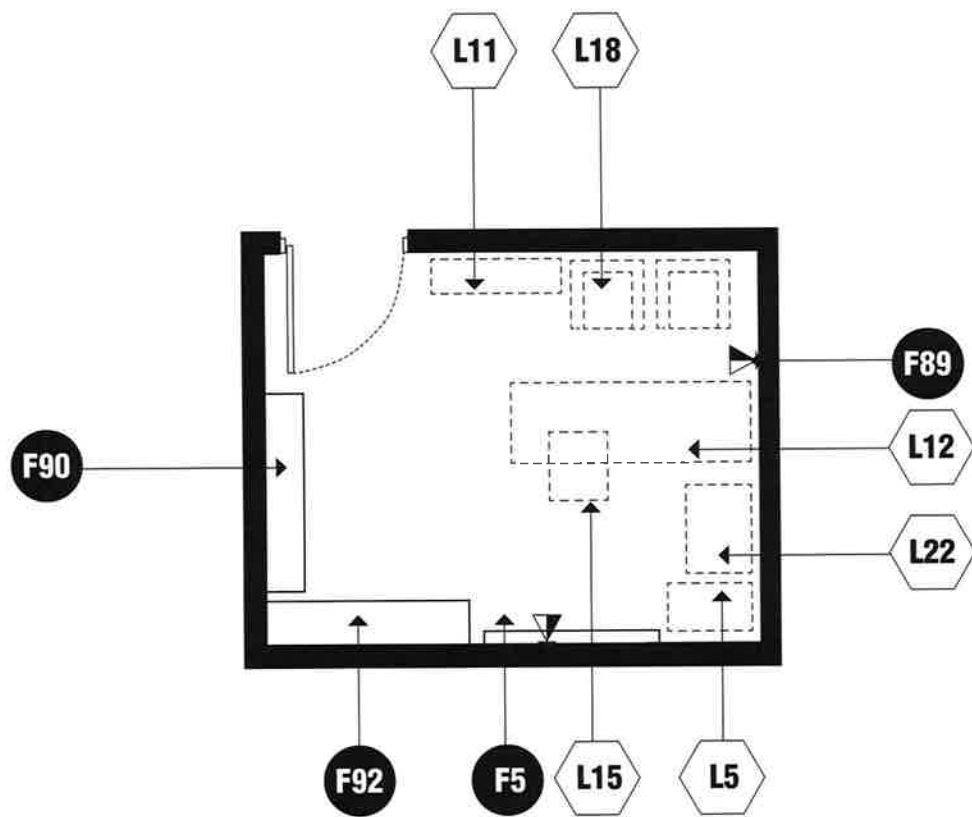
n/a

◻ **loose furnishings**

n/a

■ **AV & IT equipment**

n/a



E-ACA-14 /// SPECIAL EDUCATION COORDINATOR OFFICE

size

150 SF

capacity/users

2-4 people

ancillary spaces

n/a

spatial relationships

near self contained classroom and
resource classrooms

goal

to provide a space for the special
education coordinator to complete
work plans, store student files, and
hold meetings

activities

administrative duties
storing and retrieving supplies and
equipment

environmental considerations

windows to provide natural light and
egress
environmental sound control
electrical outlets for equipment
uniform lighting, areas of soft lighting
lite in door for visual access and security
purposes

LEGEND ///

● fixed furnishings

F5 tackable/magnetic wall surface (6 LF
minimum)

F90 storage shelving (12" deep)

F92 storage shelving (18" deep)

▶ F89 data drop

○ loose furnishings

L5 four drawer lateral file cabinet (lockable)

L11 adjustable height bookshelves (12 LF)

L12 admin workstation and chair

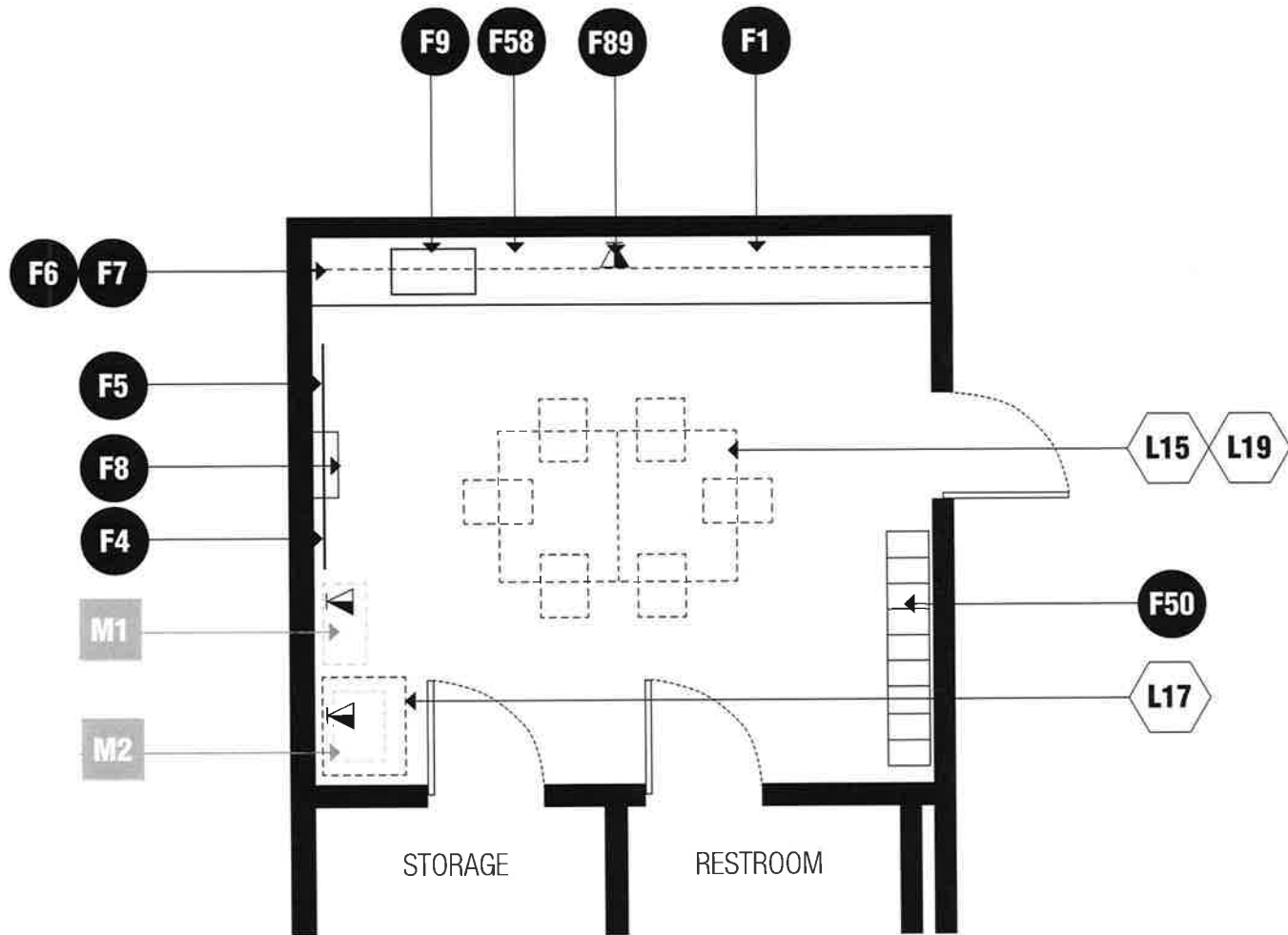
L15 task chair (2)

L18 lounge chair

L22 safe

■ AV & IT equipment

n/a



E-ACA-15 /// TEACHER COLLABORATION ROOM

size

300 SF

capacity/users

10-15 staff members

ancillary spaces

staff restroom (E-BS-10)

storage

spatial relationships

near academic core classrooms

access to staff restroom(s) from within

access to storage from within

goal

provide a dual functional space where adults can meet for committee work and teachers can perform administrative tasks

provide a space for storage of grade level materials

activities

team staff meetings

lesson planning and grading

scheduling appointments

record keeping

develop and review teacher materials

environmental considerations

environmental sound control

uniform and controllable lighting

electrical outlets for equipment

adequate ventilation

window to provide natural light and egress

LEGEND ///**● fixed furnishings**

F1 base/wall cabinets and shelving (lockable)

F4 marker board (6 LF minimum)

F5 tackable/magnetic wall surface (6 LF minimum)

F6 soap dispenser

F7 towel dispenser

F8 wall mounted interactive electronic presentation device

F9 classroom sink

F50 lockers

F58 kitchenette

▶ F89 data drop

○ loose furnishings

L15 task chair (6)

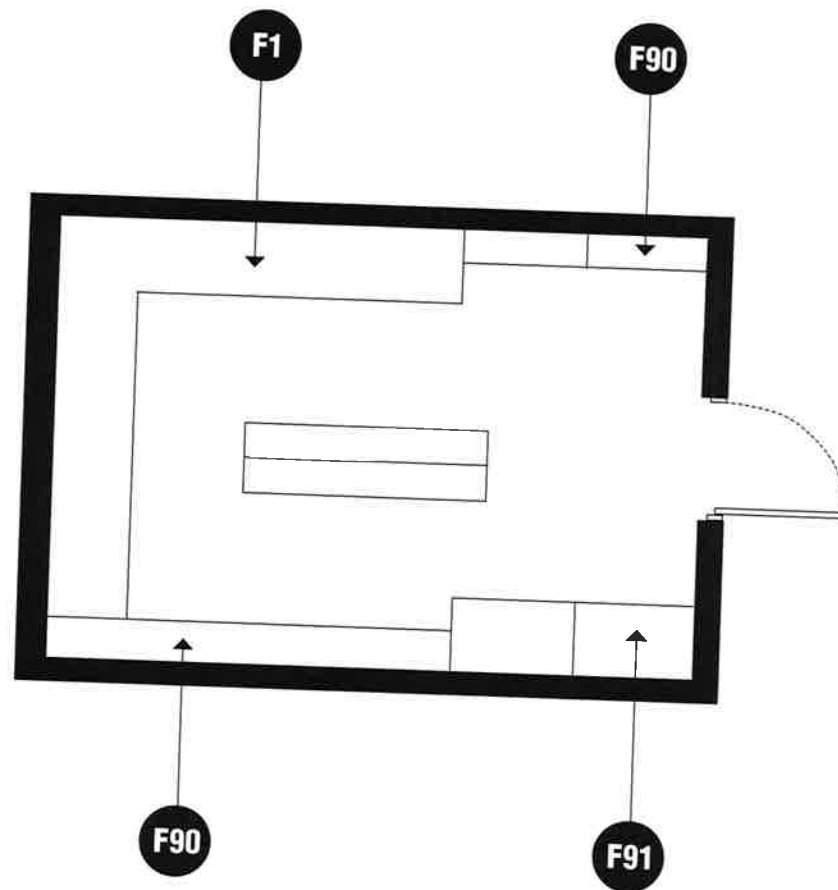
L17 printer station

L19 conference table

■ AV & IT equipment

M1 high speed and/or large format printers

M2 color printer



E-ACA-16 /// TEXTBOOK / CART STORAGE

size

200 SF

capacity/users

2 staff members

ancillary spaces

n/a

spatial relationships

near academic core classrooms

goal

to provide secure room for storing and handling of classroom materials, textbooks, and supplies

activities

storing and retrieving books and supplies

environmental considerations

uniform and controllable lighting
proper ventilation

LEGEND ///

● **fixed furnishings**

F1 base/wall cabinets and shelving (minimum 200 LF of shelving)

F90 storage shelving 12" deep

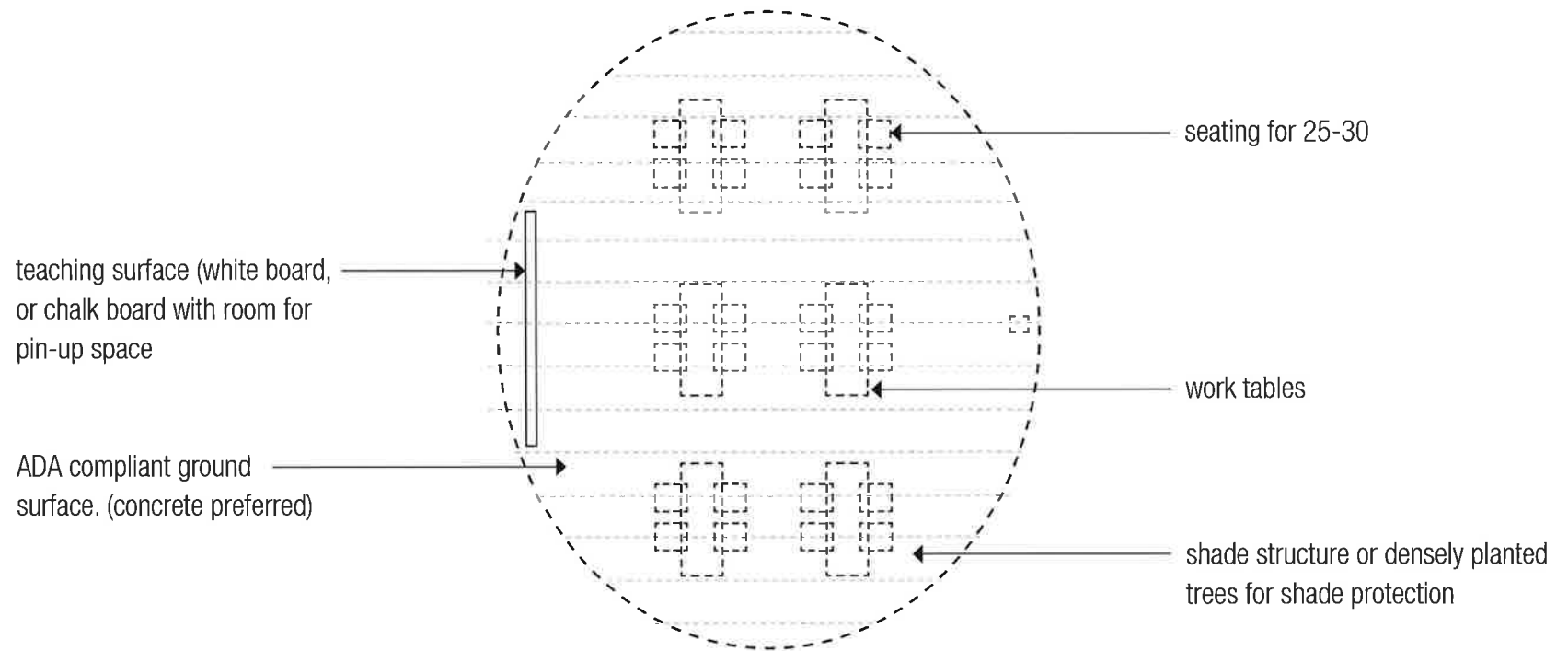
F91 storage shelving 24" deep

○ **loose furnishings**

n/a

■ **AV & IT equipment**

n/a



Note: Provide water spigot and electrical outlets within close proximity to classroom area

E-ACA-17 /// OUTDOOR CLASSROOM

size

900 SF

capacity/users

25-30 students

teachers

parents/volunteers

community members

ancillary spaces

n/a

spatial relationships

near growing gardens, if included

direct access to the science and art

rooms is desirable

allow line of sight into space from building

window

goal

provide an outdoor learning space

encourage individual and group

work through nature discovery

activities

planting

exploring

coursework

discussion

math, science, and art coursework

accessibility standards

meet the Americans with Disability Act

guidelines

ADA compliant path from building to

outdoor classroom

special considerations

should be built with regional materials to

match building, if appropriate

noise, fumes, sunlight and slope should be

considered during site selection

include a board for instruction

include a roof to protect from sun, rain and

snow, if possible

if classroom is located near play area or

other potential distractions, place

wall or other visual barrier to further

define classroom space

must be shaded. if trees are to be used for

shade, plant spacing should be dense

for rapid cover and roots should be

protected from compaction with

protective seat/retaining walls to keep

students from walking on roots

all items lockable. located within perimeter

fence (with vandal resistant finish), if

one exists

site elements

all changes in finish surfaces should

be delineated with a hard edge for

ease of maintenance (e.g. do not

place planter bed adjacent to lawn

without a physical barrier such as a

concrete walkway or metal edge

outdoor classrooms should be designed

for three seasons with a roof or shaded cover

required elements include:

fixed or flexible seating (25-30)

outdoor white board (6 LF minimum)

or flipchart

impervious or green roof, or PV

trellis with vines (structurally able

to hold plantings/soil for shade)

expected elements include:

hose bib with hose rack

native, low maintenance plants.

select for mature size and care.

choose plants for biodiversity

that provide food or habitat to

pollinators and wildlife.

seating and worktables`

pathways from building and around

outdoor classroom area

all weather electrical outlets

optional elements include:

teacher demonstration table

composting area

outdoor kitchen

handwashing station

planters

benches

small storage for tools and

equipment

This Page Intentionally Left Blank

size

garden sizes vary

capacity/users

students

teachers

parents/volunteers

community members

ancillary spaces

n/a

spatial relationships

direct access to the science and art

rooms is desirable

community access should be considered

goal

to provide an outdoor learning space

that encourages individual and group

work through growing local food

activities

planting

exploring

watering

math, science, and art coursework

accessibility standards

meet the americans with disability act

guidelines

All beds should be raised to meet ADA

guidelines considered

ADA compliant path to garden and

around all garden beds

special considerations

optional, pending availability of a garden

program to maintain the gardening beds

garden layout to be determined by site

specific program and conditions

noise, fumes, sunlight and slope should

be considered during site selection

site elements

consult Office of the State Superintendent

of Education school garden specialist

for best practices

gardens must receive 6-8 hours of direct

sunlight per day

required elements for gardens include:

teacher demonstration table

expected elements for gardens include:

planting beds

organic soil

mulch

hose bib with hose rack

plants

pathways

tool shed

optional elements include:

composting area

digging bed

handwashing station

greenhouse

worktables

drip irrigation

apiary

E-LIB /// **LIBRARY**

READING / LEARNING / CIRCULATION
ROOM
MAKERSPACE
SMALL GROUP / CONFERENCE ROOM
COMBINED OFFICE / WORKROOM
DEVICE CHARGING ROOM

SPACE	325 STUDENTS			400 STUDENTS			500 STUDENTS			700 STUDENTS		
	QTY	SF	TOTAL	QTY	SF	TOTAL	QTY	SF	TOTAL	QTY	SF	TOTAL
LIBRARY												
Reading/Learning/Circulation Room	1	2,720	2,720	1	3,140	3,140	1	3,700	3,700	1	4,820	4,820
Makerspace	1	500	500	1	500	500	1	500	500	1	500	500
Small Group/Conference Room	2	300	600	2	300	600	2	300	600	2	300	600
Combined Office/Workroom	1	400	400	1	400	400	1	400	400	1	400	400
Device Charging Room	1	150	150	1	150	150	1	150	150	1	150	150
TOTAL			4,370			4,790			5,350			6,470

Comments //

Note: In this document, staff assumptions were made to ensure staff spaces were approximately correct at each capacity model. Specific square footage requirements and quantity of spaces will be completed during the site specific ed spec process. Assumptions for the capacity model are: 325 students : 51 staff; 400 students : 57 staff; 500 students : 66 staff; 700 students: 81 staff.

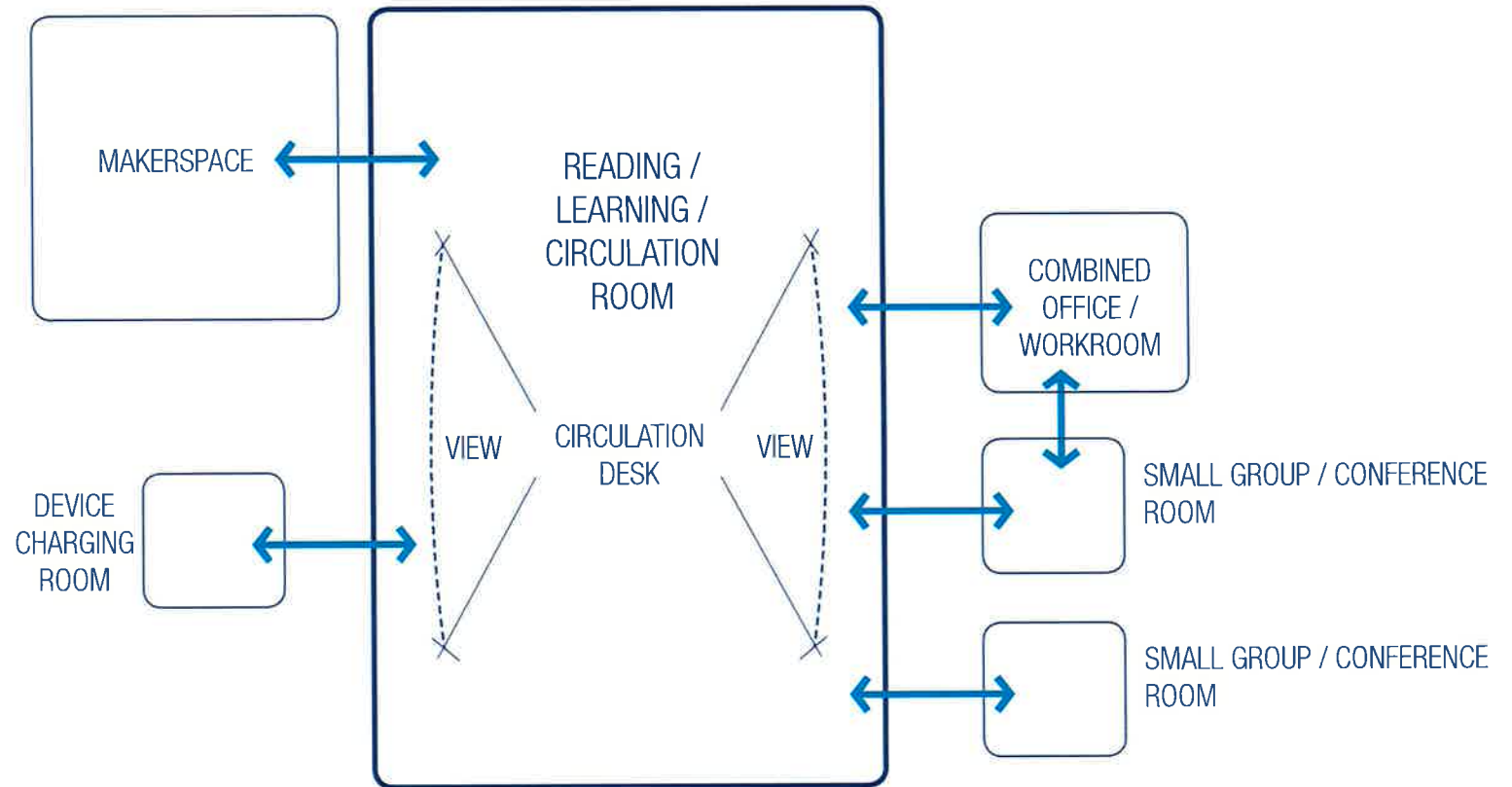
KEY ///

direct access 

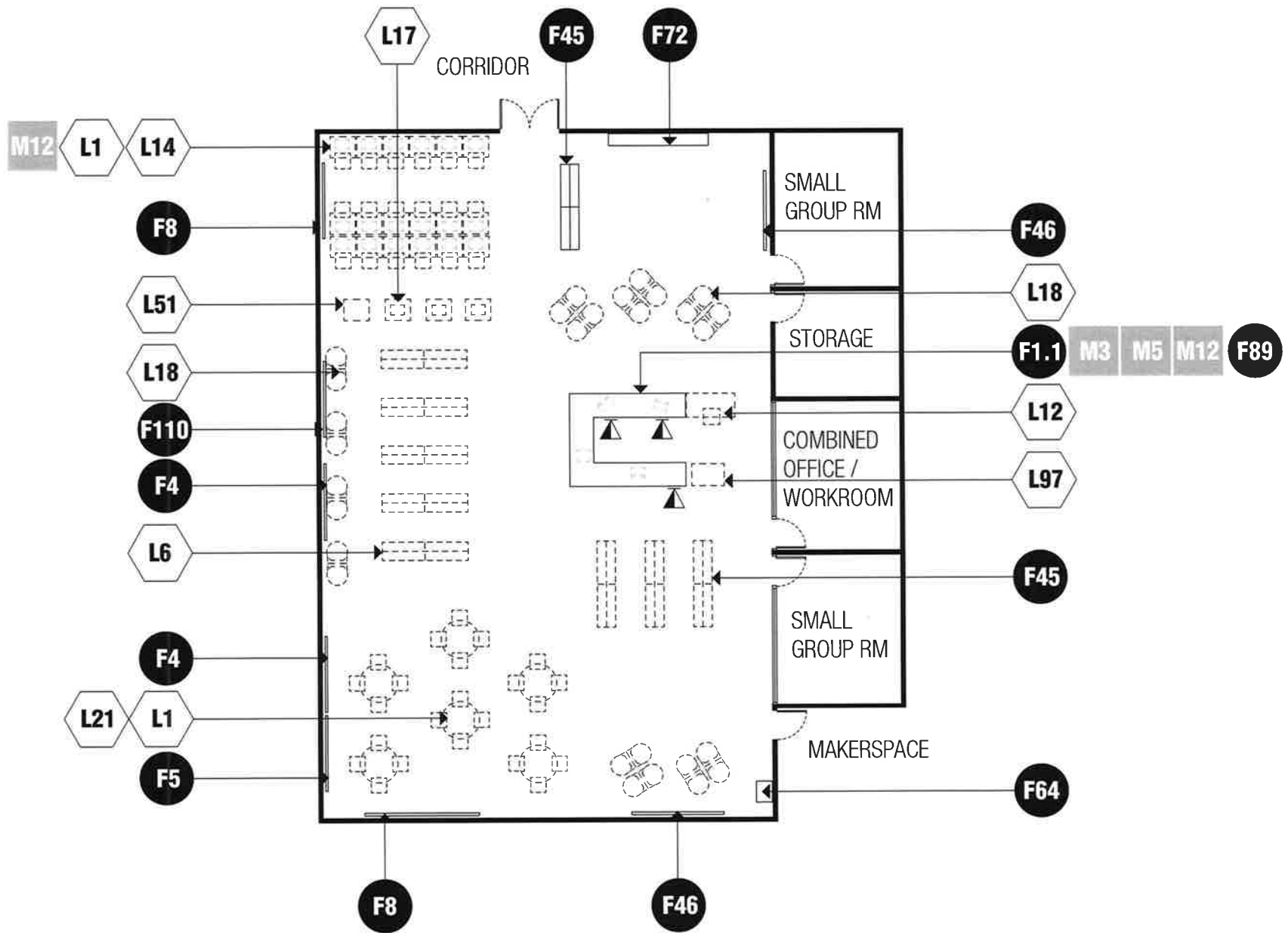
linked space 

enclosed space 

open space 



LIBRARY ADJACENCY DIAGRAM



E-LIB-1 /// READING / LEARNING / CIRCULATION ROOM

size

2,720-4,820 SF

capacity/users

75-175 students

1-2 media specialist(s)

community patrons after school hours

ancillary spaces

makerspace (E-LIB-2)

small group/conference room (E-LIB-3)

combined office/workroom (E-LIB-4)

device charging room (E-LIB-5)

spatial relationships

circulation area located close to entrance/
exit

near single user bathrooms for staffing
and community needs

goals

to provide students, staff, and community
with access to information and quiet
study areas

activities

reading and research

circulation of materials and resources,
including online catalogues

large group and small group instruction

provide meeting areas for community,
staff, and parents

dramatic reading and storytelling

informal small group interactions

individual learning

project based learning

environmental considerations

recessed floor outlets at tables

adequate ventilation

lighting appropriate to task with switches

to dim in separate zones of library

environmental sound control

electrical outlets at entrance for future
security system

electrical outlets at column locations

windows to provide natural sunlight

zoned for after school hours use
ceiling height in proportion to room
dimensions

open flow for traffic in reference/
professional/periodical areas

electrical outlets in tow space of wall
shelving

window treatment to darken room for AV
presentation

mix of lounge furniture

consider lockdown safety protocols

LEGEND ///

● **fixed furnishings**

- F1.1 casework (circulation desk)*
- F4 marker board (two locations, 8 LF each)
- F5 tackable / magnet wall surface
- F8 wall mounted interactive electronic presentation device (2-3)
- F45 library casework
- F46 motorized projection screen (1-2)
- F64 filtered water fountain with bubbler and gooseneck bottle filler
- F72 3D displays
- ▶ F89 data drop
- F110 2D displays

◻ **loose furnishings**

- L1 stackable/nesting chairs (32-55 per student enrollment)
- L6 mobile shelving**
- L12 admin workstation and chair
- L14 computer station (15-25)
- L16 bound group rug (2) - by projection screens

- L17 printer stations (3-5)
- L18 lounge chair (15-25)
- L21 work table (6-10 with various heights)
- L51 laptop charging cart
- L97 spring-loaded book cart (1-2)

■ **AV & IT equipment**

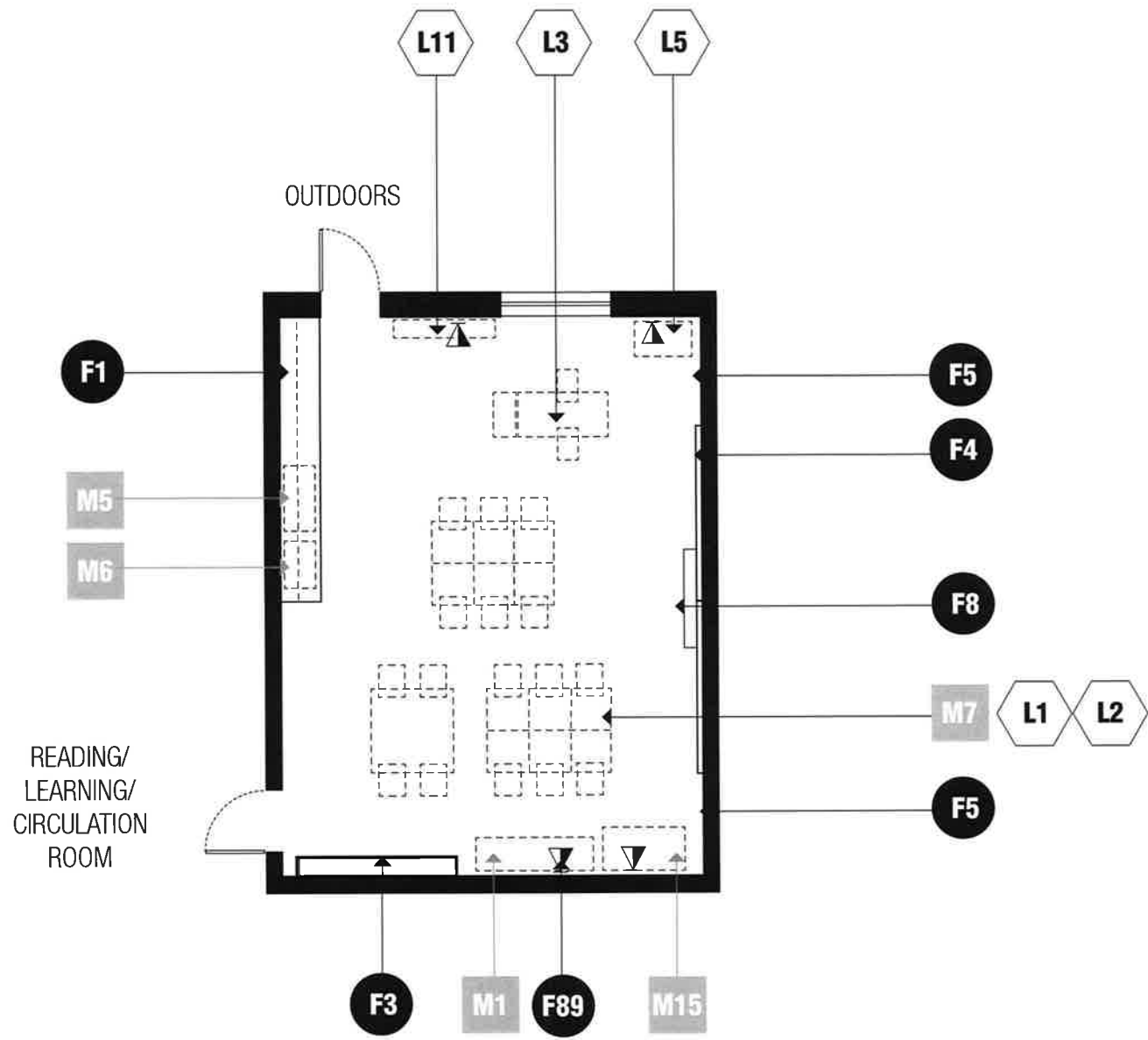
- M3 bar code reader
- M5 digital scanner
- M12 laptop computers (20-30)(hardwired)***

* circulation desk must meet ada standards and have sufficient space for librarian, two students and a book drop

**shelving is calculated as the maximum capacity of the building X20 books/student; 10 inch (standard size books), 12 inch (picture books, reference books, periodicals and audiovisual storage), 18-24 inch (equipment storage); shelving should include forward facing shelves

***circulation desk needs 2-3 laptops

This Page Intentionally Left Blank



E-LIB-2 /// MAKERSPACE

size

500 SF

capacity/users

10-15 students

teachers

guests

volunteers

ancillary spaces

reading/learning/circulation room (E-LIB-1)

spatial relationships

located within library suite with
easy public access and communal use;
access to outside when possible

goals

a flexible space to accommodate a variety
of hands-on learning and the
production of varied projects

activities

space for instruction in developing skills
in use of tools, materials, and
processes to apply knowledge of
planning and design to actual
fabrication of projects (project can
include: 3D printing, constructing
blocks/legos, constructing with
cardboard, etc.)

environmental considerations

uniform and controllable lighting
environmental sound control
electrical outlets for equipment
windows to provide natural light

adequate ventilation

window treatments to darken room for AV
presentations

access to outside when possible

LEGEND ///**● fixed furnishings**

F1 base/wall cabinets and shelving

F3 wall shelving

F4 marker board (6 LF minimum)

F5 tackable/magnetic wall surface (6 LF
minimum)

F8 wall mounted interactive electronic
presentation device

▶ F89 data drop

◻ loose furnishings

L1 stackable/nesting chairs (16) or L73
student tall stools (16) (various
heights)

L2 nesting tables (4-5)

L3 teacher work surface with mobile
storage and two chairs

L5 four drawer lateral file cabinet

L11 adjustable height bookshelves

■ AV & IT equipment

M1 high speed and/or large format printer

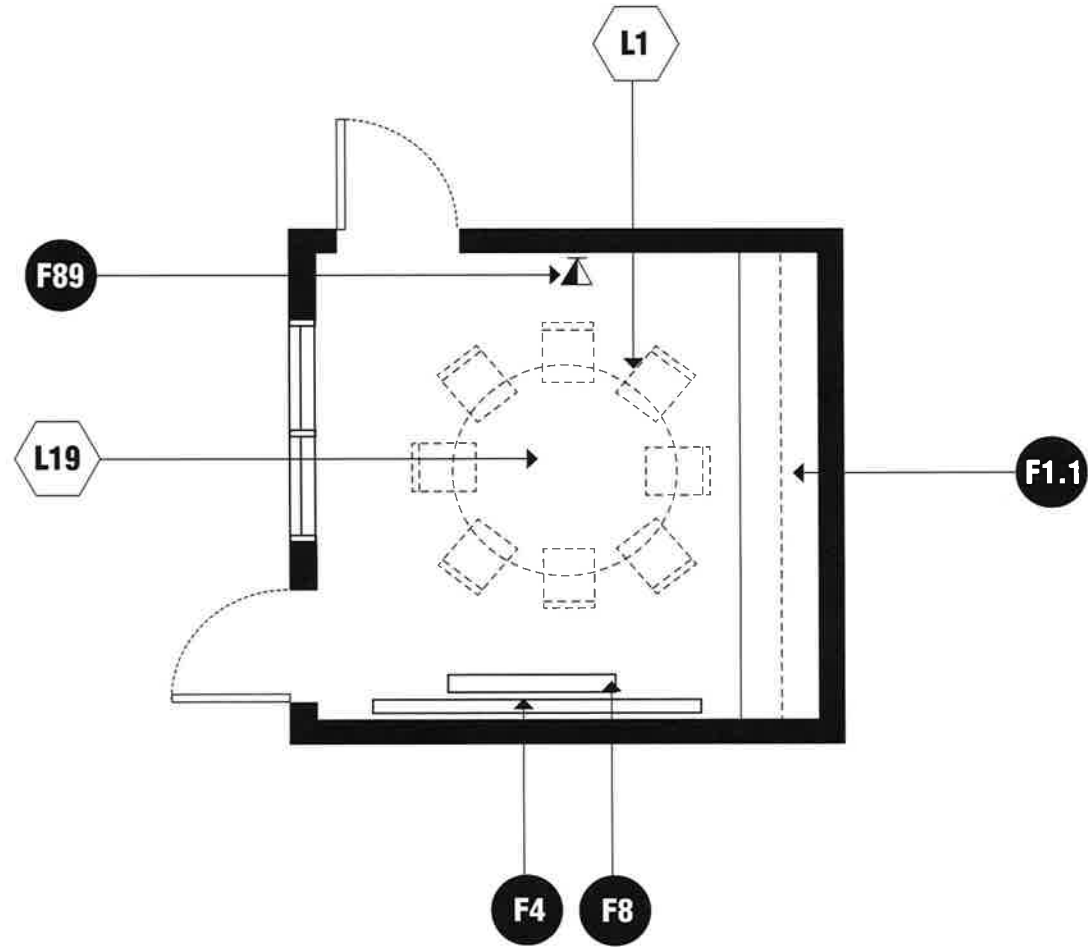
M5 digital scanner

M6 laminator

M7 desktop computer or M12 laptop
computer

M15 3D-printer (optional)

READING/LEARNING/
CIRCULATION ROOM



E-LIB-3 /// SMALL GROUP / CONFERENCE ROOM

size

300 SF

capacity/users

8 people

ancillary spaces

reading/learning/circulation room
(E-LIB-1)

spatial relationships

n/a

goals

voice, video, data reception, and
distribution
security system location
network management
telephone wiring entry and distribution
cable and CCTV reception and
broadcasting
IT infrastructure

activities

group research projects
meetings/teleconferencing
listening and viewing

environmental considerations

uniform and controllable lighting
environmental sound control
electrical outlets for equipment
visual access to reading/learning/
circulation area
adequate ventilation
window blinds for privacy during
conferences

LEGEND ///

● fixed furnishings

F1.1 casework (8-10 LF)

F4 marker board (6 LF minimum)

F8 wall mounted interactive electronic
presentation device

▶ F89 data drop

◻ loose furnishings

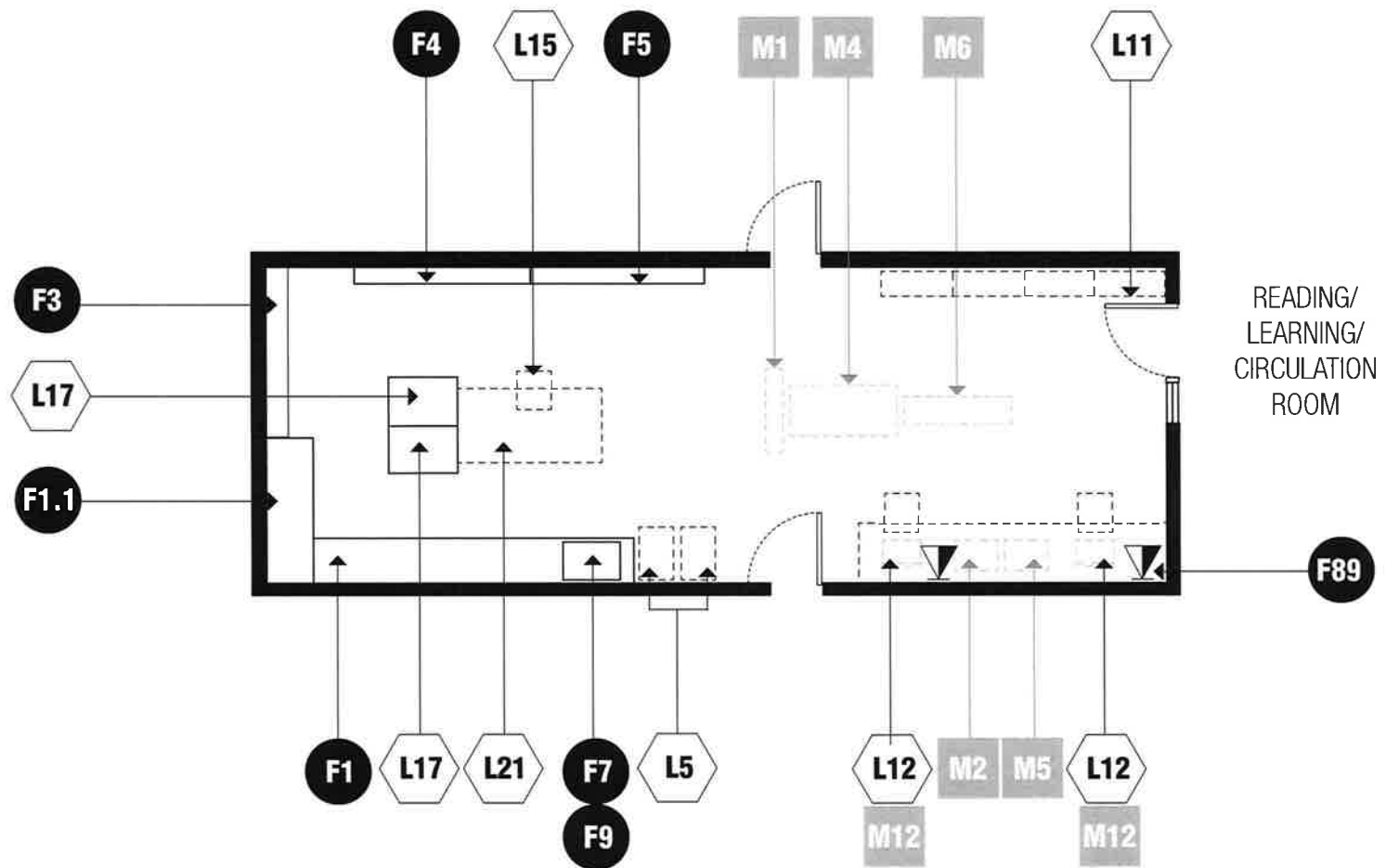
L1 stackable/nesting chairs (8)

L19 conference table

■ AV & IT equipment

n/a

E-LIB-3 /// **SMALL GROUP / CONFERENCE ROOM**



E-LB-4 /// COMBINED OFFICE / WORKROOM

size

400 SF

capacity/users

2-4 staff members

ancillary spaces

reading/learning/circulation room (E-LIB-1)

spatial relationships

adjacent to office (optional)

adjacent to small group room

located behind circulation desk and whole class zone

goals

to provide a less visible and secure space for processing incoming materials and storage of materials

to provide a private space for media specialists and administration staff to professionally plan and collaborate

activities

scanning

digitizing

meetings

storage of materials

storage of a/v materials and videotapes

environmental considerations

uniform and controllable lighting

environmental sound control

visual access to reading/learning/

circulation area

auditory privacy

LEGEND ///

● fixed furnishings

F1 base/wall cabinets and shelving (base cabinets with power)

F1.1 casework (poster/map storage)

F3 wall shelving

▶ F89 data drop

○ loose furnishings

L5 four drawer lateral file cabinet (1-2)

L11 adjustable height bookshelves (12 LF)

L12 admin workstation and chair (2)

L15 task chair

L21 work table

■ AV & IT equipment

M1 high-speed and/or large format printers

M2 color printer

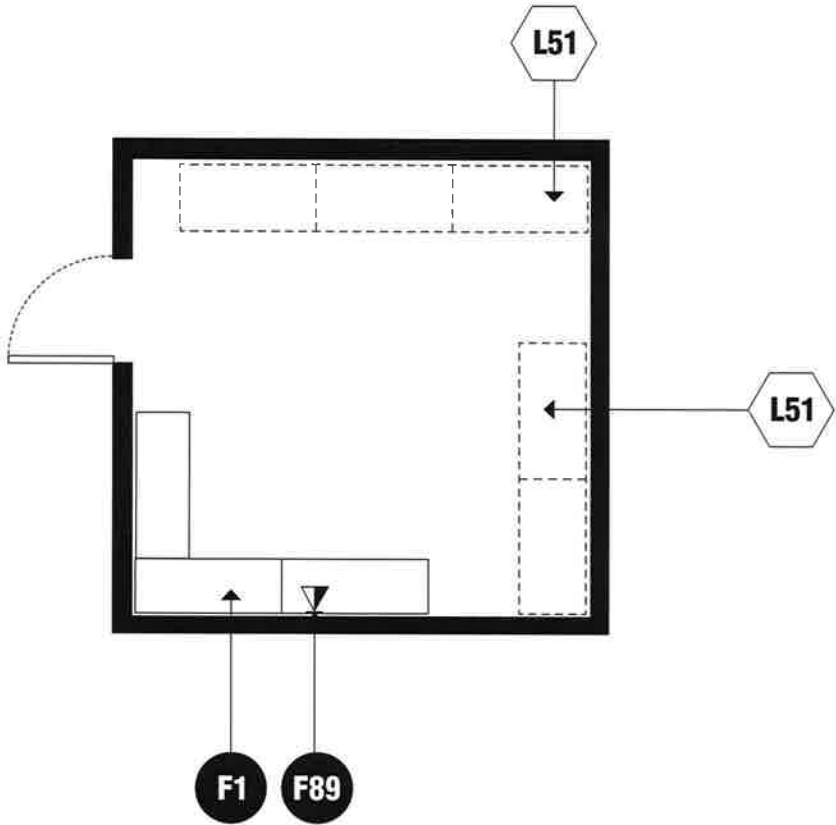
M4 photocopy machine

M5 digital scanner

M6 laminator

M12 laptop computer (2)

READING /
LEARNING /
CIRCULATION
ROOM



E-LIB-5 /// DEVICE CHARGING ROOM

size

150 SF

capacity/users

staff

ancillary spaces

reading/learning/circulation room (E-LIB-1)

spatial relationships

n/a

goals

to provide a less visible and secure space to charge various technology devices

activities

charging computers, av equipment and other technology

environmental considerations

uniform and controllable lighting with an appropriate visual comfort level
environmental sound control
HVAC control separate from media center
secure metal door
electrical outlets designed around a “parking” strategy for 5-6 laptop charging carts
due to the changing nature of technology, a device charging room is to be designed for flexibility of use

LEGEND ///

● **fixed furnishings**

F1 base/wall cabinets and shelving
(no lower shelves)

▶ F89 data drop

◻ **loose furnishings**

L51 laptop charging cart (5-6)

■ **AV & IT equipment**

n/a

E-VA /// **VISUAL ARTS**

ART LAB

KILN ROOM

ART STORAGE

SPACE	325 STUDENTS			400 STUDENTS			500 STUDENTS			700 STUDENTS		
	QTY	SF	TOTAL	QTY	SF	TOTAL	QTY	SF	TOTAL	QTY	SF	TOTAL
VISUAL ARTS												
Art Lab	1	1,000	1,000	1	1,000	1,000	1	1,000	1,000	1	1,000	1,000
Kiln Room	1	60	60	1	60	60	1	60	60	1	60	60
Art Storage	1	150	150	1	150	150	1	150	150	1	150	150
TOTAL			1,210			1,210			1,210			1,210

Comments //

Note: In this document, staff assumptions were made to ensure staff spaces were approximately correct at each capacity model. Specific square footage requirements and quantity of spaces will be completed during the site specific ed spec process. Assumptions for the capacity model are: 325 students : 51 staff; 400 students : 57 staff; 500 students : 66 staff; 700 students: 81 staff.

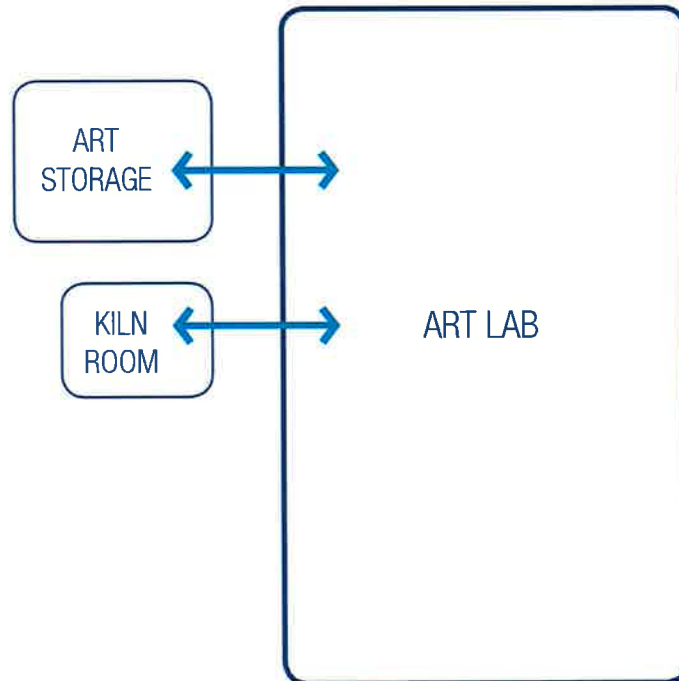
KEY ///

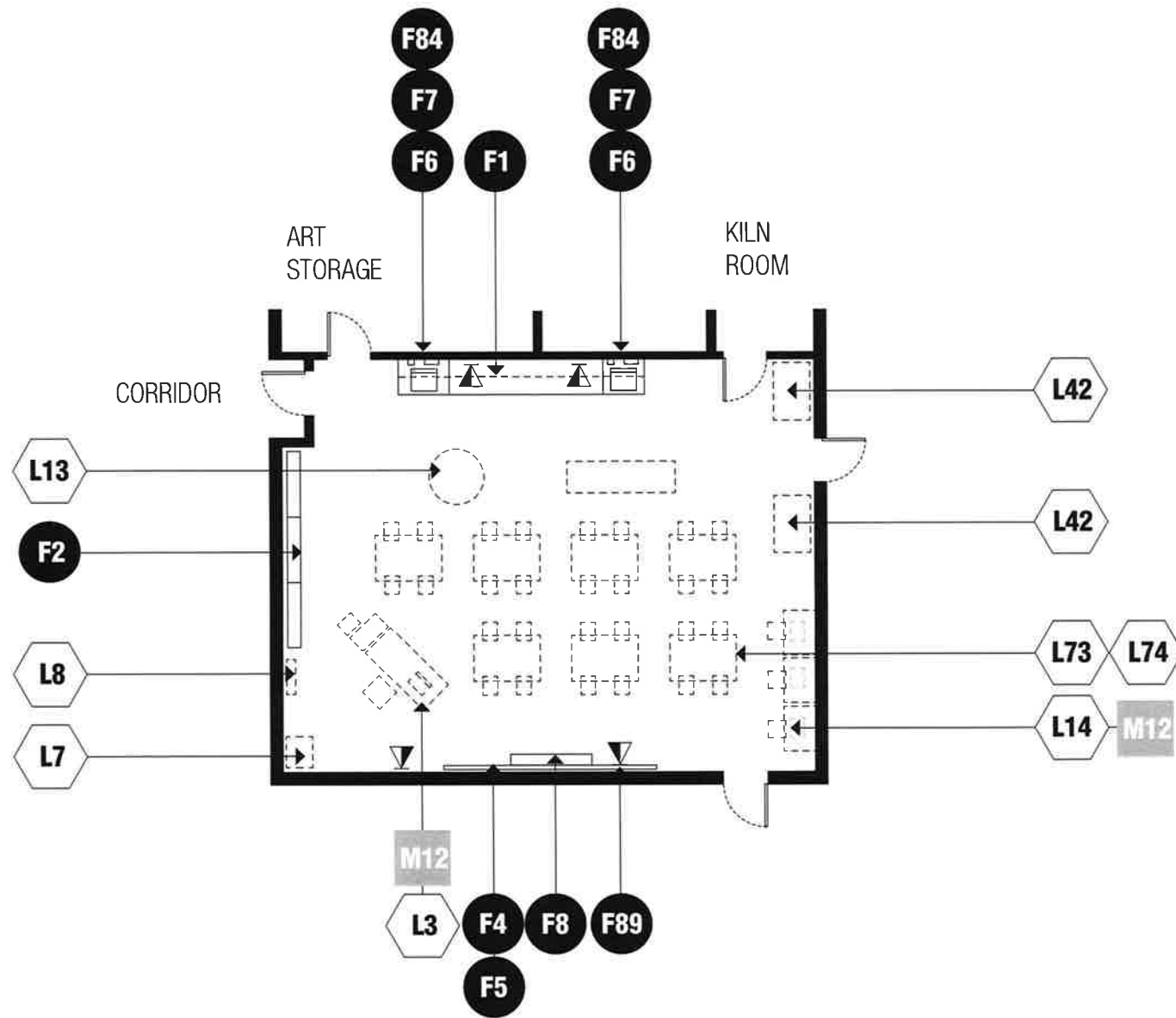
direct access 

linked space 

enclosed space 

open space 





E-VA-1 /// ART LAB

size

1,000 SF

capacity/users

20-25 students

1 teacher

1 student teacher

parent volunteers

ancillary spaces

kiln room (E-VA-2)

art storage (E-VA-3)

spatial relationships

centrally located with convenient access
to core academic classrooms and
media lab

goals

to provide an area for students to work
on a variety of art projects by exploring
the manipulation of a variety of
mediums

to develop technical and expressive skills

activities

drawing, painting, and print making
sculpture, model-making, collage, and
assembly

ceramics-clay

computer graphics and mixed media work

guest artist lectures

demonstrations

viewing prints/slides/movies/art videos

research, reading, and writing

individual and cooperative group work
storage of supplies, projects, and small
equipment

mixed media work

environmental considerations

uniform and controllable lighting

windows to provide natural light and
egress (preferably northern exposure)

environmental sound control

electrical outlets for equipment

include outlets on the wall above counter
spaces in raceway

LEGEND ///

● **fixed furnishings**

F1 base/wall cabinets and shelving (9-32 LF
of 30" high base cabinets with wall
cabinets above paper storage cabinets,
two sinks different heights)

F2 students cubbies

F4 marker board (6 LF minimum)

F5 tackable/magnet wall surface

F6 soap dispenser (at each sink)

F7 towel dispenser (at each sink)

F8 wall mounted interactive electronic
presentation device

F84 two sinks (6 ft a part) large, kitchen
size with clay traps; cabinetry below

▶ F89 data drop

◻ **loose furnishings**

L3 teacher work surface with mobile
storage and two chairs

L7 teachers lockable wardrobe

L8 tall cabinet with shelves

L13 small table

L14 computer workstation (3)

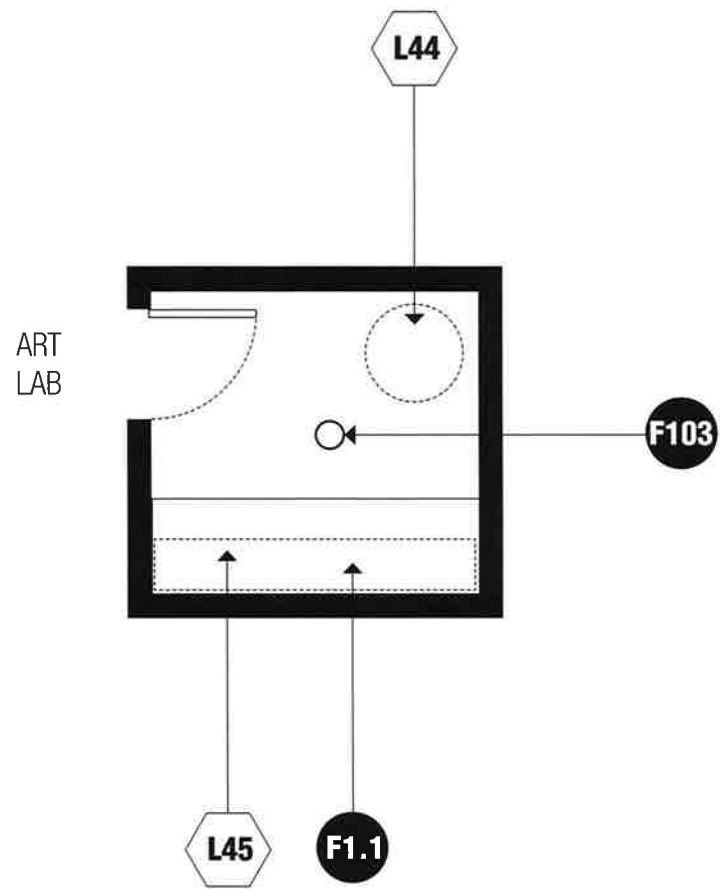
L42 drying rack (2 with 40-80 slats)

L73 student tall stool (20-25)

L74 two person tall art table (10-13)

■ **AV & IT equipment**

M12 laptop computer



E-VA-2 /// KILN ROOM

size

60 SF

capacity/users

1 staff member

ancillary spaces

art lab (E-VA-1)

spatial relationships

near art lab

goals

to provide an area properly equipped for
ceramics and ceramics firing
storage for completed art work

activities

store 3D sculptural work
house kiln equipment
firing of ceramics

environmental considerations

lighting appropriate to task
adequate ventilation with vents to
the outside for kiln and controlled by a
thermostat
specialized electrical outlets for
equipment

LEGEND ///

● **fixed furnishings**

F1.1 casework

F103 floor drain

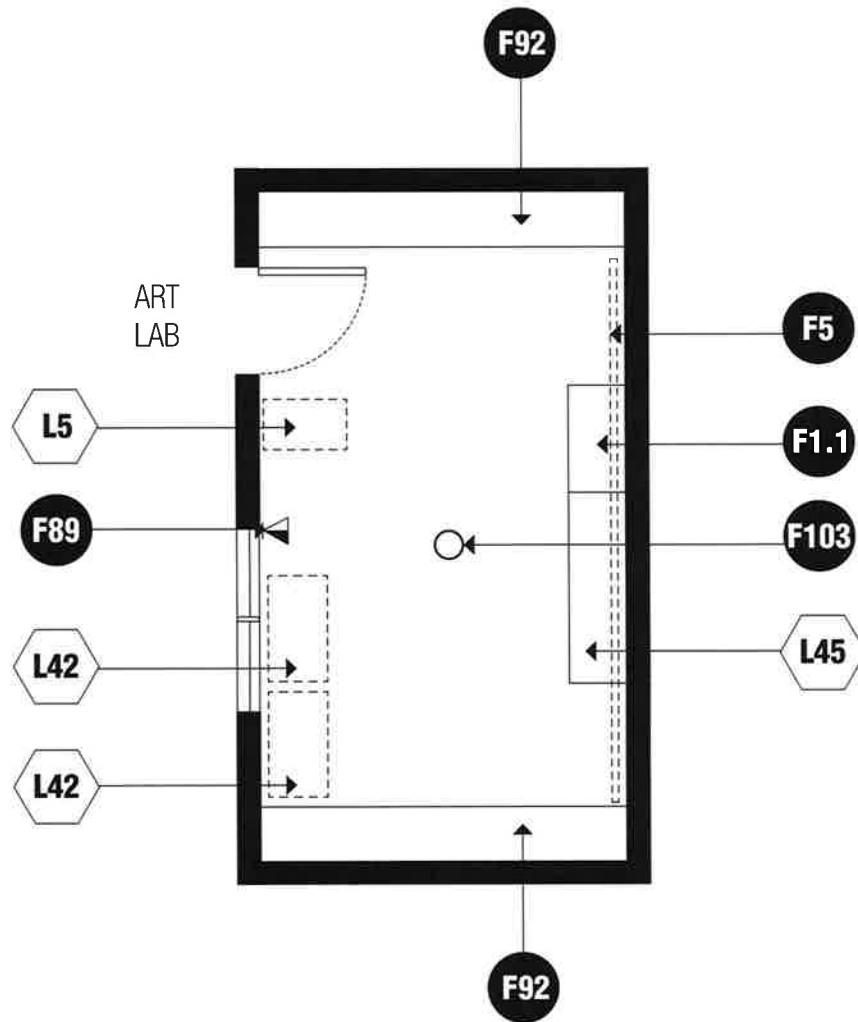
◻ **loose furnishings**

L44 kiln

L45 bisqueware shelving

■ **AV & IT equipment**

n/a



E-VA-3 /// ART STORAGE

size

150 SF

capacity/users

1-2 staff members

ancillary spaces

art lab (E-VA-1)

spatial relationships

near art lab

goals

to provide lockable storage for art supplies, portable equipment, technology, peripherals, and materials

activities

storage

environmental considerations

uniform and controllable lighting
electrical outlets for equipment

LEGEND ///

● fixed furnishings

F1.1 casework (tall cabinets, paper storage, and hazardous materials)

F5 tackable wall surface

▶ F89 data drop

F92 storage shelving 18" deep (metal)

F103 floor drain

◻ loose furnishings

L5 four drawer lateral file cabinet

L42 drying racks (2)

L45 bisqueware shelving

■ AV & IT equipment

n/a

E-PA /// **MUSIC**

GENERAL MUSIC ROOM
GENERAL MUSIC STORAGE

SPACE	325 STUDENTS			400 STUDENTS			500 STUDENTS			700 STUDENTS		
	QTY	SF	TOTAL	QTY	SF	TOTAL	QTY	SF	TOTAL	QTY	SF	TOTAL
MUSIC												
General Music Room	1	900	900	1	900	900	1	900	900	1	900	900
General Music Storage	1	250	250	1	250	250	1	250	250	1	250	250
TOTAL			1,150			1,150			1,150			1,150

Comments //

Note: In this document, staff assumptions were made to ensure staff spaces were approximately correct at each capacity model. Specific square footage requirements and quantity of spaces will be completed during the site specific ed spec process. Assumptions for the capacity model are: 325 students : 51 staff; 400 students : 57 staff; 500 students : 66 staff; 700 students: 81 staff.

KEY ///

direct access



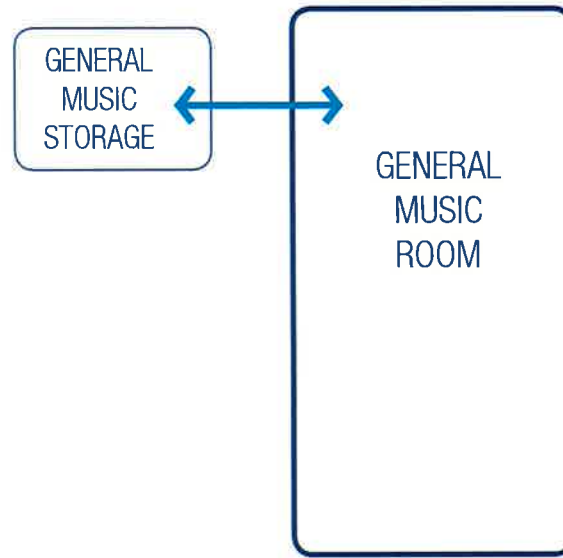
linked space

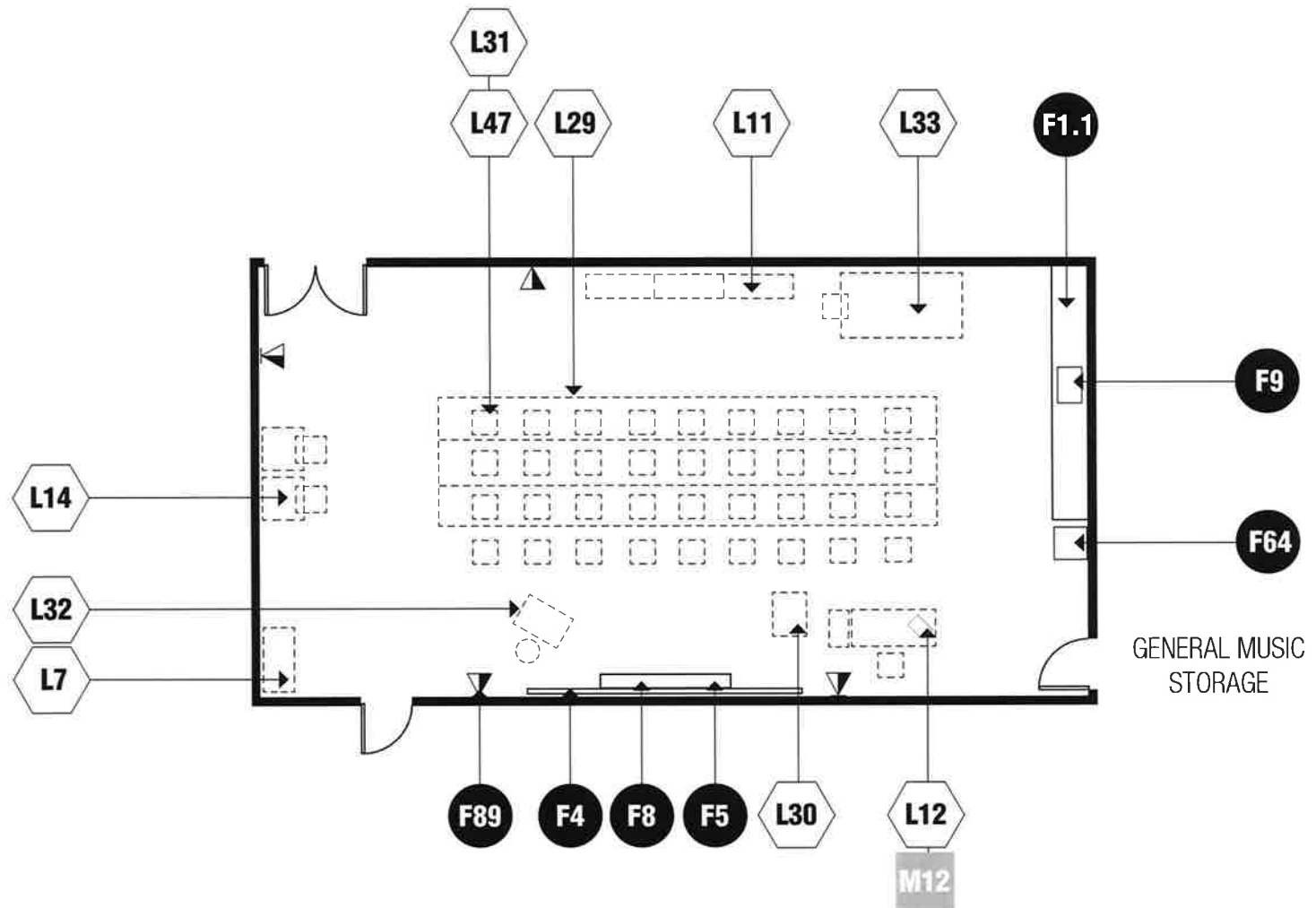


enclosed space



open space





E-PA-1 /// GENERAL MUSIC ROOM

size

900 SF

capacity

20-25 students

1 teacher

parents/volunteers

ancillary spaces

general music storage (E-PA-2)

spatial relationships

co-locate near rooms with similar functions and noise levels

goals

to provide students with the opportunity to explore and develop skills in music through large group, ensemble, and solo experiences

activities

listen, analyze, describe, and compose music (stereos, CD players, computers and printer, laser discs)

sing alone and with others (solos, duets, trios, ensembles, large groups)

guest speakers and performers (solo and ensembles)

group instruction (small and large)

choral, speech, theatrics (musicals, operas)

view educational videos for music enrichment

extra-curricular after school activities (i.e., Odyssey of the Mind, church groups

play in small and large group ensemble with instruments (keyboard, percussion, etc.)

environmental considerations

uniform and controllable lighting

environmental sound control

electrical outlets for equipment including floor mounted outlets with secure covers

sound insulation in walls (extended above ceiling to underside of deck)

acoustical wall treatments

adequate ventilation

proportion classroom for effective viewing and listening from all areas of the classroom

auditory privacy

drinking fountain in classroom

layout should consider teaching space and breakout space

LEGEND ///**● fixed furnishings**

F1.1 casework (paper storage cabinets, 8-10 LF)

F4 marker board (16 LF, 1/2 with music staff bars)

F5 tackable/magnetic wall surface

F8 wall mounted interactive electronic presentation device

F9 classroom sink

F64 filtered water fountain with bubbler and gooseneck bottle filler

▶ F89 data drop

◻ loose furnishings

L7 teachers lockable wardrobe

L11 adjustable height bookshelves (24 LF)

L12 admin workstation and chair

L14 computer station (2)

L29 choral risers (moveable)

L30 mobile a/v cabinet

L31 posture chair (25)

L32 conductor's podium and stool

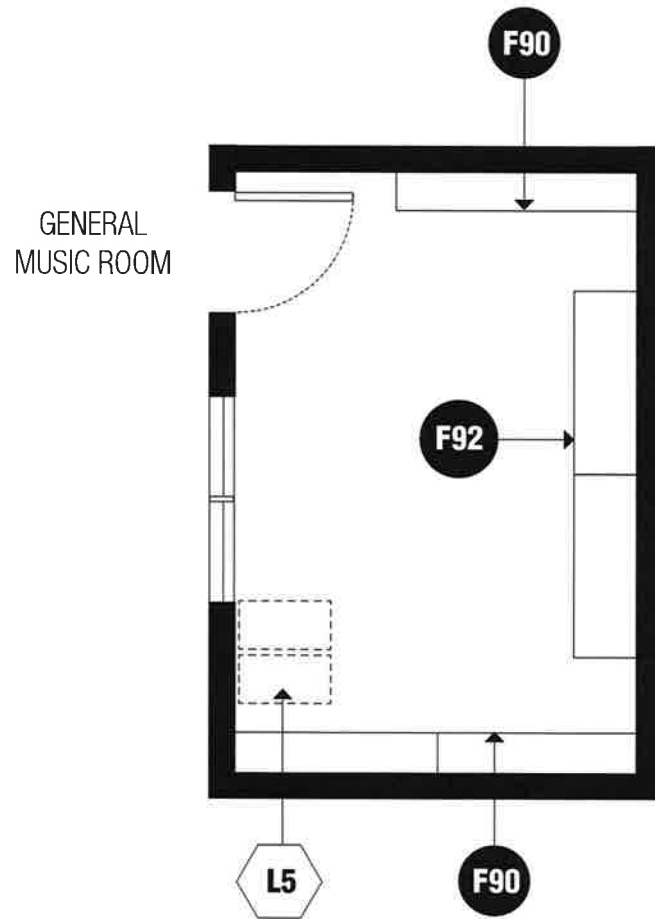
L33 digital upright piano

L47 music stand (25)

■ AV & IT equipment

M12 laptop computer

E-PA-1 /// **GENERAL MUSIC ROOM**



E-PA-2 /// GENERAL MUSIC STORAGE

size

250 SF

capacity

1 staff member

ancillary spaces

general music room (E-PA-1)

spatial relationships

n/a

goals

to provide adequate storage for choral risers, accessories, and equipment

activities

storage and simple repair of accessories and equipment

play instruments in small ensembles and large group (keyboard, orff, percussion, etc.)

environmental considerations

uniform and controllable lighting
electrical outlets for equipment

LEGEND ///

● **fixed furnishings**

F90 storage shelving 12" deep

F92 storage shelving 18" deep

*total shelving shall support storage of 25 keyboards, orff instruments, and assorted percussion instruments

◻ **loose furnishings**

L5 four drawer lateral file cabinet

■ **AV & IT equipment**

n/a

E-PE /// **PHYSICAL EDUCATION**

GYMNASIUM

STAGE

OFFICE

STORAGE

CHAIR STORAGE

BICYCLE STORAGE

OUTDOOR PE STORAGE

PLAYGROUNDS

SPACE	325 STUDENTS			400 STUDENTS			500 STUDENTS			700 STUDENTS		
	QTY	SF	TOTAL	QTY	SF	TOTAL	QTY	SF	TOTAL	QTY	SF	TOTAL
PHYSICAL EDUCATION												
Gymnasium	1	3,400	3,400	1	3,400	3,400	1	4,200	4,200	1	5,000	5,000
Stage*	1	850	850	1	850	850	1	850	850	1	850	850
Office	1	150	150	1	150	150	1	150	150	1	225	225
Storage	1	300	300	1	300	300	1	300	300	1	400	400
Chair Storage	1	100	100	1	125	125	1	150	150	1	200	200
Bicycle Storage	1	150	150	1	150	150	1	150	150	1	150	150
Outdoor PE Storage	1	100	100	1	100	100	1	100	100	1	200	200
Playgrounds	1	-	-	1	-	-	1	-	-	1	-	-
TOTAL			5,050			5,075			5,900			7,025

Comments //

Note: In this document, staff assumptions were made to ensure staff spaces were approximately correct at each capacity model. Specific square footage requirements and quantity of spaces will be completed during the site specific ed spec process. Assumptions for the capacity model are: 325 students : 51 staff; 400 students : 57 staff; 500 students : 66 staff; 700 students: 81 staff.

*Stage is listed as required in this program and optional in SD program. Final location of Stage to be determined during the site-specific Ed Spec process and approved by DCPS.

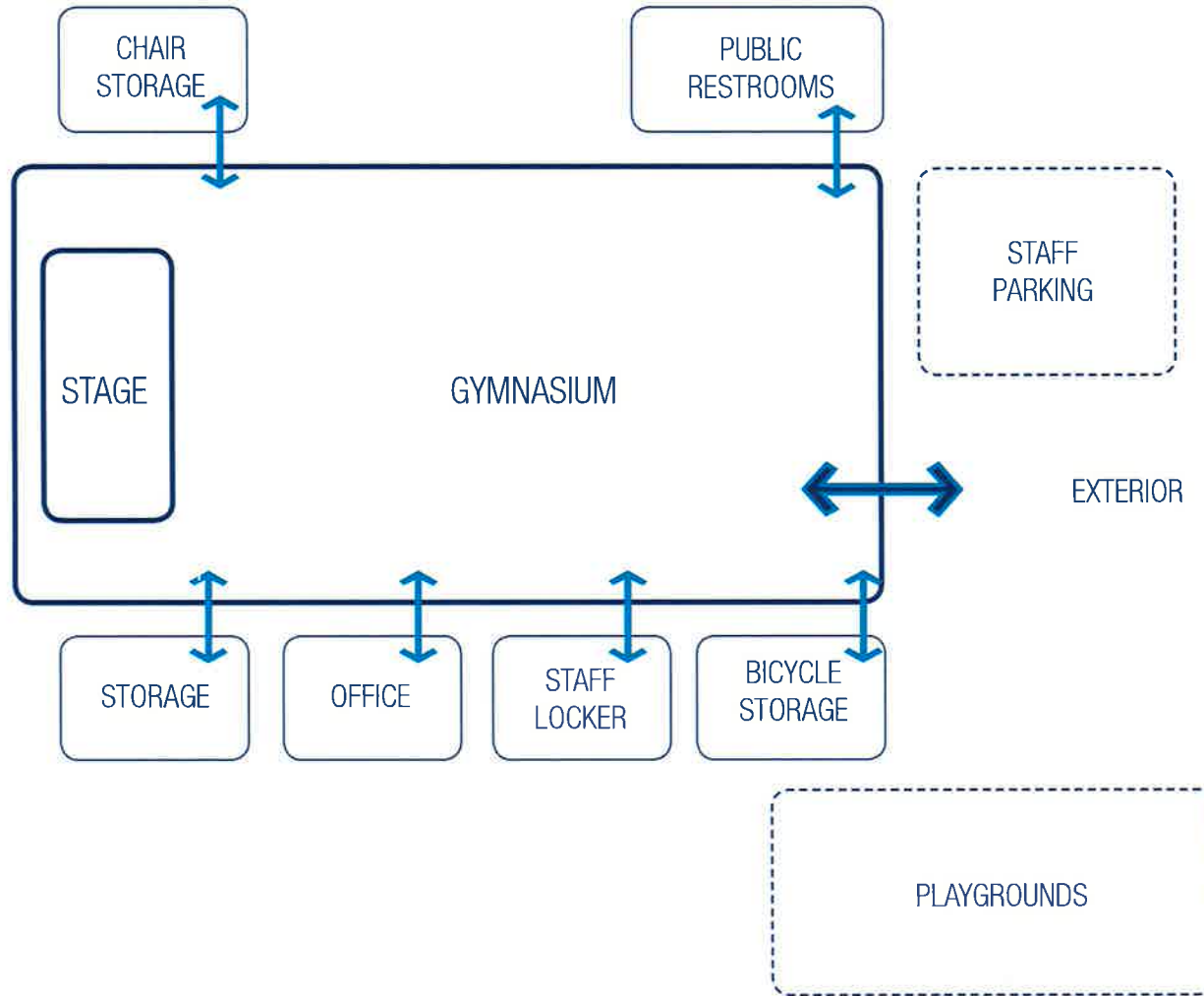
KEY ///

direct access 

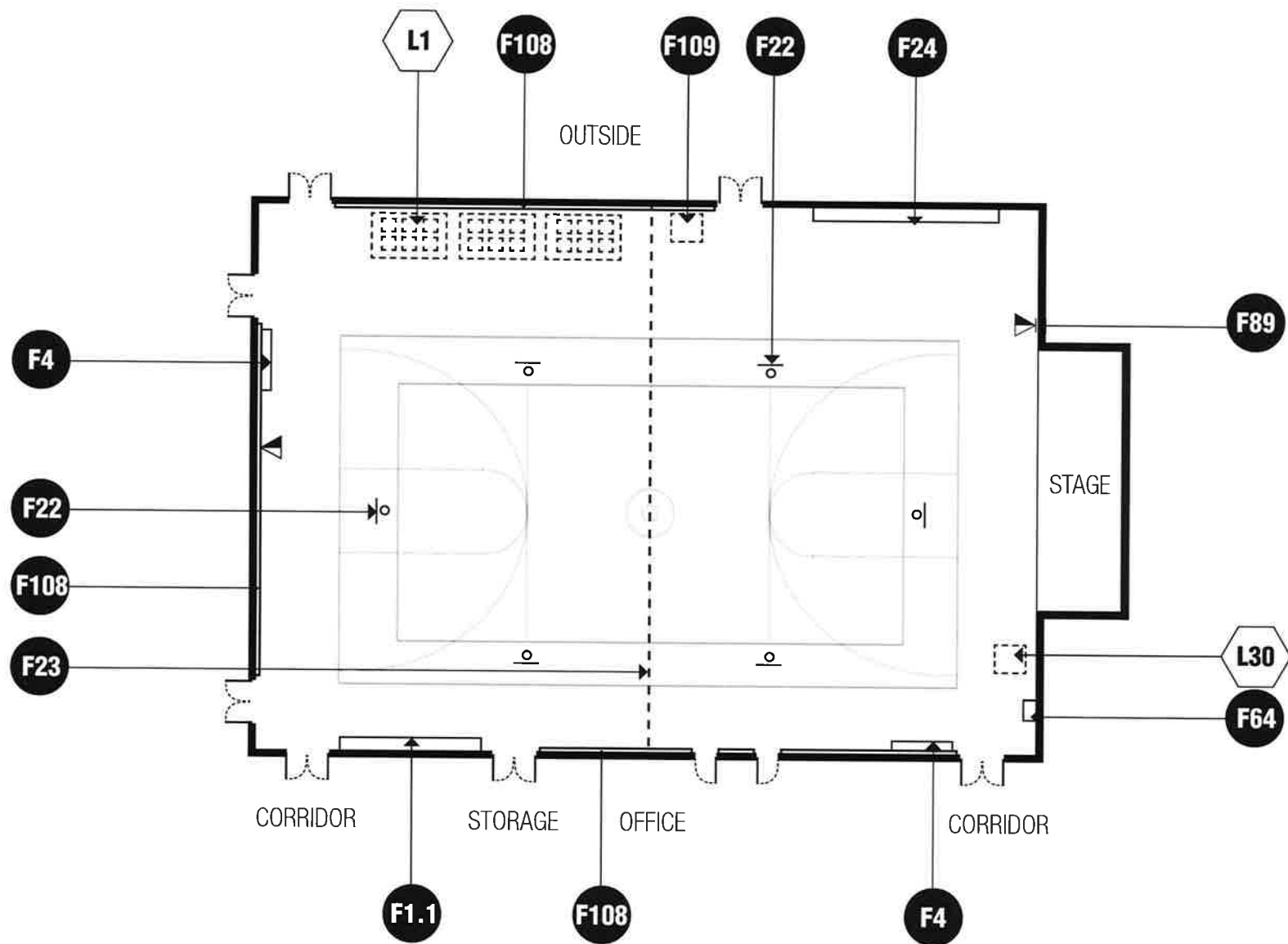
linked space 

enclosed space 

open space 



PHYSICAL EDUCATION ADJACENCY DIAGRAM



E-PE-1 /// GYMNASIUM

size

3,400 - 5,000 SF (clear floor area)

capacity/users

20-25 students per class

2-3 teachers

parents and community members for meetings

5,000 SF classroom should be lined to host two class sections at one time

ancillary spaces

stage (E-PE-2)

office (E-PE-3)

storage (E-PE-4)

chair storage (E-PE-5)

bicycle storage (E-PE-6)

outdoor PE storage (E-PE-7)

spatial relationships

near public restrooms and staff locker/shower, with easy access
access to outdoor physical education and covered play areas

near parking

located with easy access to rest of school, but must be able to close off area for security during evening activities

goals

to provide space for PE classes to meet
to provide space for students to present performances

activities

athletic skills and leadership games

adaptive physical education
student assemblies and programs
lectures/teaching
community use

environmental considerations

uniform and controllable lighting
environmental sound control
adequate sound control/acoustics
clear height of 20' from floor to nearest obstruction
electrical outlets for equipment
structure, lighting, and ducts designed not to trap PE balls
ceiling heights should be proportional to room volume
adjoining room with window darkening capabilities
proper AV equipment for front and back of house acoustics
*bleachers are not a priority at this age range

LEGEND ///

● **fixed furnishings**

F1.1 casework (9-32 LF storage)

F4 marker board (6 LF minimum, 2 sides of gym with electrical outlet below)

F22 basketball operable goals (adjustable height, rims, hoops, ceiling hung or portable)

F23 operable partition-motorized

F24 climbing wall

F64 filtered water fountain with bubbler and gooseneck bottle filler

▶ F89 data drop

F108 safety padding

F109 stereo with Xbox and Wii connection ability (with connection to A/V equipment/speakers from inside gym space)

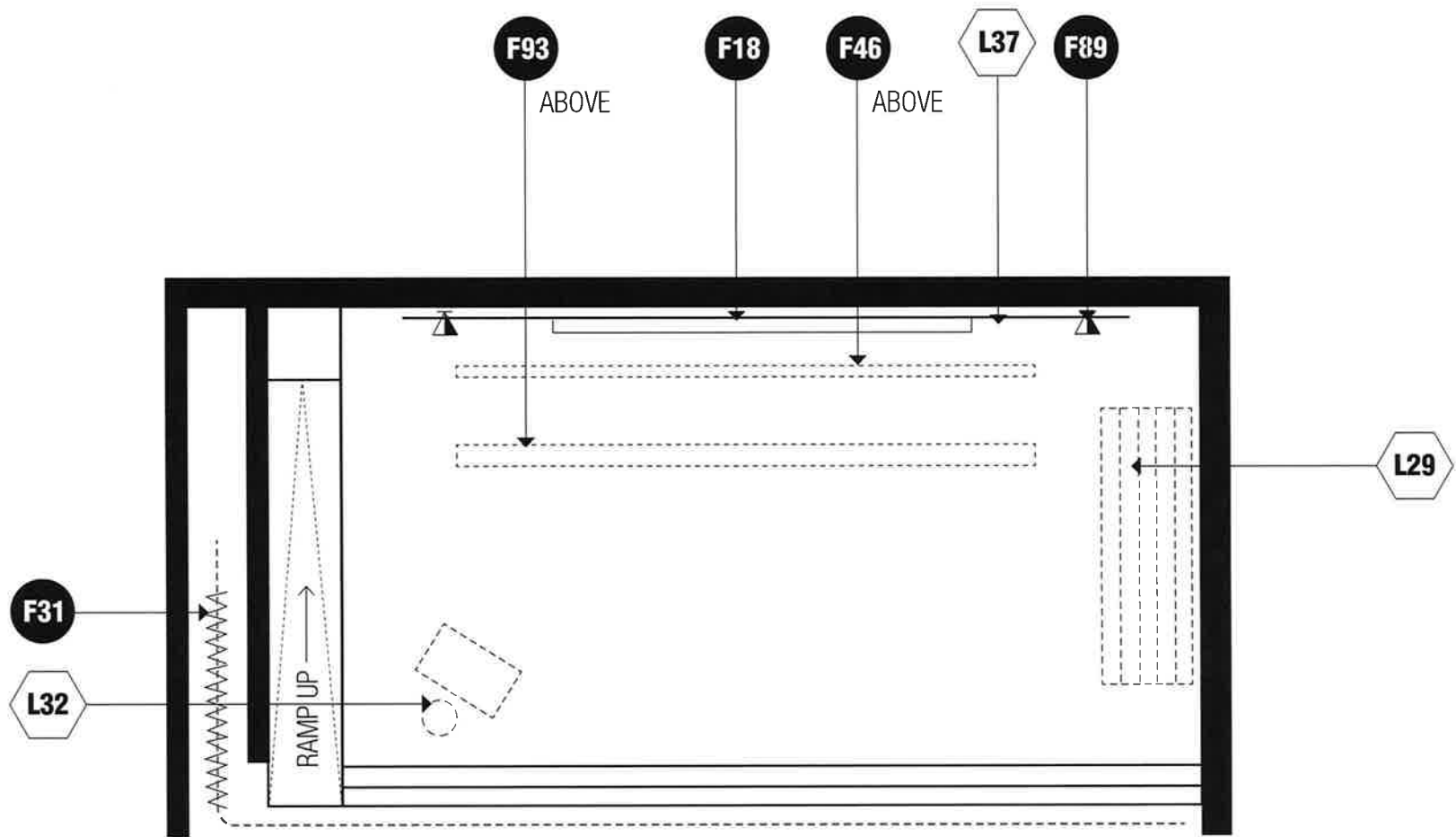
◻ **loose furnishings**

L1 stackable/nesting chairs

L30 mobile A/V cabinet

■ **AV & IT equipment**

n/a



GYMNASIUM

NOTE //
Retractable stages should be considered.

E-PE-2 /// STAGE

size

850 SF

capacity/users

20-25 students

teachers

parents/volunteers

community members

ancillary spaces

gymnasium (E-PE-1)

student dining area/multipurpose
(E-SD-1)

spatial relationships

near chair storage

near music rooms if possible

goals

to provide space for students to present
performances

activities

student assembly/award programs

theatrical/musical performances

in-service conferences

environmental considerations

uniform/theatrical lighting

environmental sound control

electrical outlets for equipment

stage to be no more than 21" above
gymnasium floor

direct ADA and convenient access to
stage via stairs/ramp

fixed construction or "Murphy" retractable

LEGEND ///

● fixed furnishings

F18 mirror

F31 stage curtains

F46 motorized projection screen

▶ F89 data drop

F93 theatre and stage equipment (sound
and lights on joists)

◻ loose furnishings

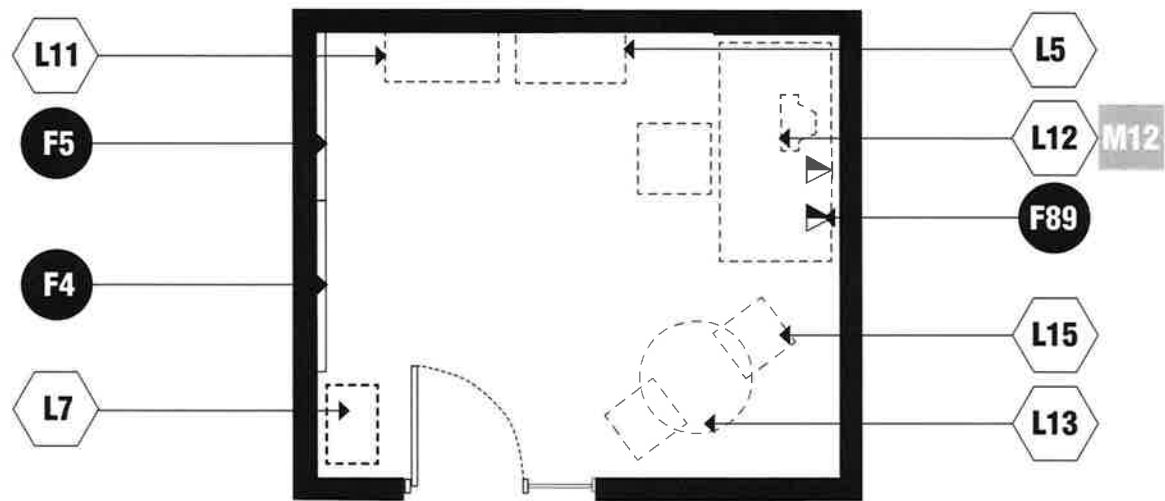
L29 choral risers

L32 conductor's podium and stool

L37 dance barres

■ AV & IT equipment

n/a



E-PE-3 /// OFFICE

size

150-225 SF

capacity/users

1-2 staff members

ancillary spaces

gymnasium (E-PE-1)

spatial relationships

adjacent to PE Storage

visual access to gymnasium

near restrooms

goals

to provide space for PE teachers and administrators

activities

scheduling

planning

maintaining records

meetings/teleconferencing

coaching

environmental considerations

uniform lighting

environmental sound control

electrical outlets for equipment

windows to provide natural light, desirable

visual access to gymnasium

auditory privacy

LEGEND ///

● fixed furnishings

F4 marker board (6 LF)

F5 tackable magnet/wall surface

▶ F89 data drop

○ loose furnishings

L5 four drawer lateral file cabinet

L7 teacher lockable wardrobe

L11 adjustable height bookshelves

L12 admin workstation and chair

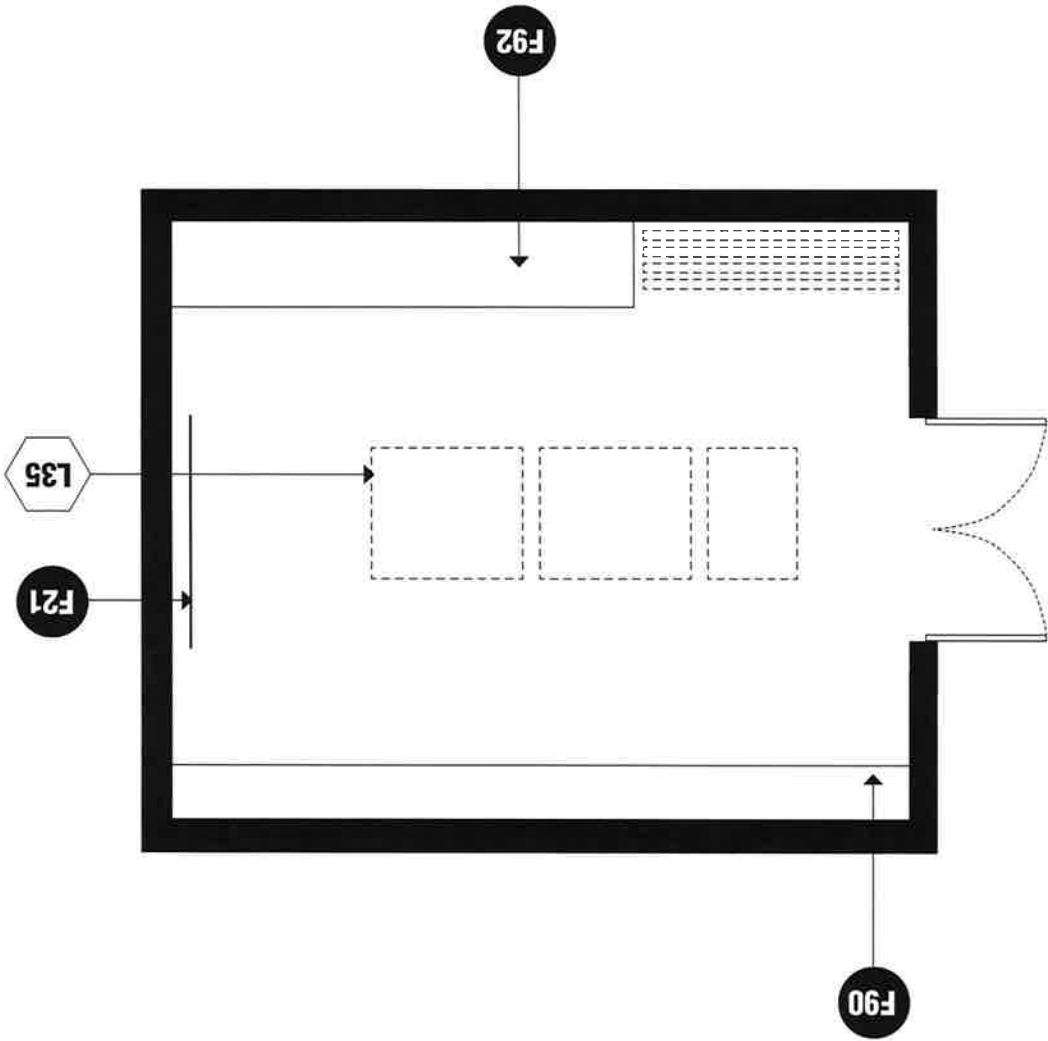
L13 Small table (round)

L15 task chairs (2)

■ AV & IT equipment

M12 laptop computer

E-PE-4 /// STORAGE



size

300-400 SF

capacity/users

1-2 staff members

ancillary spaces

gymnasium (E-PE-1)

spatial relationships

n/a

goals

to provide convenient and adequate storage for all physical education equipment

activities

storage of PE equipment such as tumbling mats, ball bins, etc.

environmental considerations

uniform lighting
leave space below shelving on one wall for portable bins

LEGEND ///

● **fixed furnishings**

F21 peg board

F90 storage shelving 12" deep

F92 storage shelving 18" deep (metal/wire)

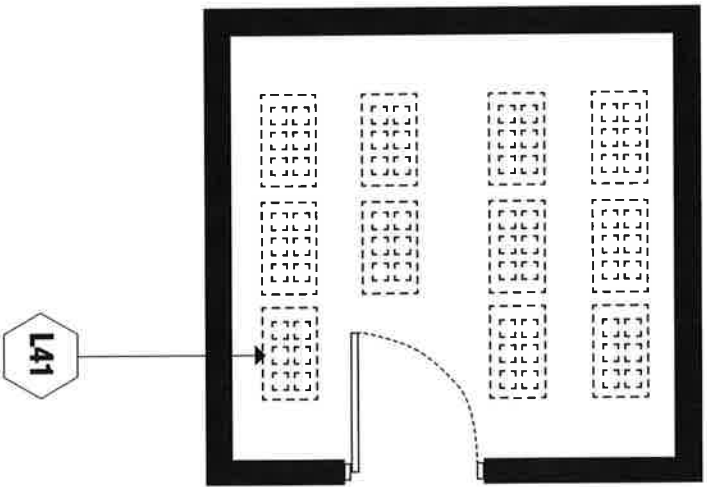
◻ **loose furnishings**

L35 ball bins

*varied and dynamic equipment suited to store PE equipment

■ **AV & IT equipment**

n/a



E-PE-5 /// CHAIR STORAGE

size

100-200 SF (or as required to accommodate seating quantity)

capacity/users

1 staff member

ancillary spaces

n/a

spatial relationships

gymnasium (E-PE-1)

goals

to provide adequate storage for folding chairs to be used within gymnasium

activities

storage of chairs

environmental considerations

uniform lighting

controllable lighting

LEGEND ///

● **fixed furnishings**

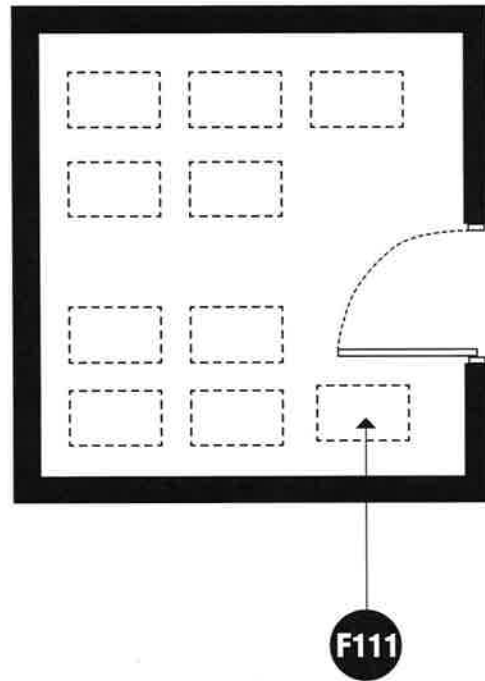
n/a

○ **loose furnishings**

L41 chair dollies

■ **AV & IT equipment**

n/a



E-PE-6 /// **BICYCLE STORAGE**

size

150 SF (can be combined with storage) (E-PE-5)

capacity/users

1 staff member

ancillary spaces

outdoor PE storage (E-PE-7)

playground (E-PE-8)

spatial relationships

gymnasium (E-PE-1)

goals

to provide adequate storage for bikes and other P.E. equipment to be used within gymnasium

activities

storage of bikes and other P.E. equipment

environmental considerations

uniform lighting

controllable lighting

LEGEND ///

● **fixed furnishings**

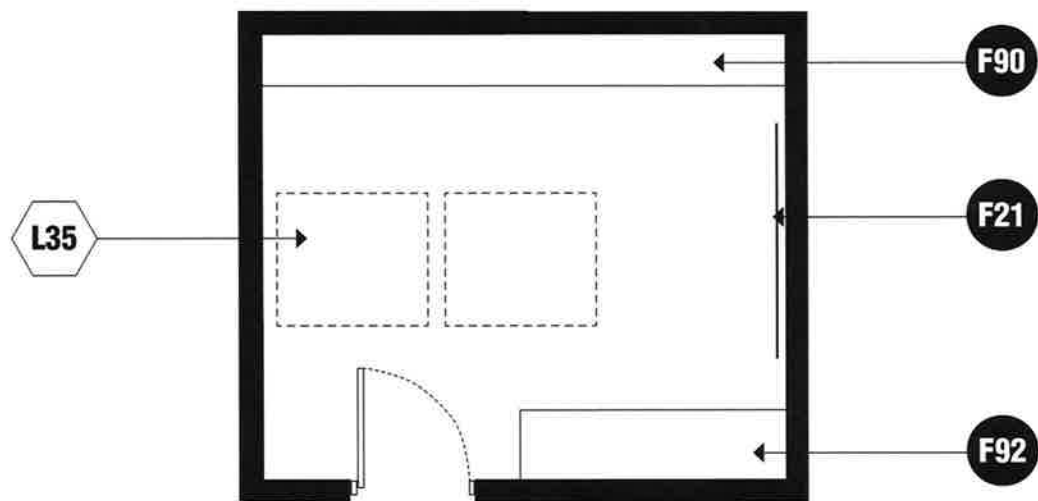
F111 bike rack

○ **loose furnishings**

n/a

■ **AV & IT equipment**

n/a



E-PE-7 /// OUTDOOR P.E. STORAGE

size

100-200 SF

capacity/users

1 staff member

ancillary spaces

gymnasium (E-PE-1)

spatial relationships

close proximity to play areas outside for ease of access
exterior access

goals

to provide convenient and adequate storage for outdoor physical education equipment

activities

storage of outdoor PE equipment

environmental considerations

uniform lighting
leave space below shelving on one wall for portable bins

LEGEND ///

● **fixed furnishings**

F21 peg board

F90 storage shelving 12" deep

F92 storage shelving 18" deep (metal/wire)

◻ **loose furnishings**

L35 ball bins

*varied and dynamic equipment suited to store PE equipment

■ **AV & IT equipment**

n/a

This Page Intentionally Left Blank

Playground design to be determined by
site specific program and conditions

size

playground size to be determined during site specific program and conditions

capacity

students
staff
parents/volunteers
community members

ancillary spaces

outdoor classroom (E-ACA-17)

spatial relationships

near academic core areas
designated classrooms may have direct access to playgrounds
public access
close proximity to water fountains and trash cans
shaded areas (structured, play equipment and/or landscaping)

goals

provide playground areas to allow for a range of ages, abilities and interests to accommodate a variety of spaces including play equipment, open space, outdoor classrooms, garden beds, fields and courts.

activities

inclusive interactive features that allow an opportunity for swinging, balancing, climbing, sliding, tactile, and imaginary

and sensory play
open space areas should allow for running, biking, hard surface games (e.g. four square, hopscotch, etc.), imaginary play, and quiet time.

site and equipment considerations

locate equipment with moving parts at the perimeter of the play area
soft surfacing in all fall zones
ensure safe zones are around all moving equipment
include a variety of types of play elements to encourage tactile, imaginary, and sensory play
include tables and chairs for age group
include hard surface with basketball courts and group games, if space allows
include tables and chairs for age group

accessibility standards

meet or exceed the Americans with Disability Act guidelines and include inclusive play elements
playground design to be determined by site specific program and conditions