

Attachment A.2.2
West Education Specifications Part 2

E-AD /// **ADMINISTRATION**

ENTRANCE LOBBY
WELCOME CENTER
SECURITY AREA
CONFERENCE ROOM
PRINCIPAL'S OFFICE
ADMINISTRATIVE OFFICE
ADMINISTRATIVE WORKROOM
RECORDS ROOM
PARENT RESOURCE CENTER (OPTIONAL)
COUNSELOR'S OFFICE
STUDENT SERVICES
STUDENT SERVICES CONFERENCE
EXTRA-CURRICULAR WORKROOM/
PROGRAM OFFICE
STAFF LOUNGE
WELLNESS / LACTATION ROOM

SPACE	325 STUDENTS			400 STUDENTS			500 STUDENTS			700 STUDENTS		
	QTY	SF	TOTAL	QTY	SF	TOTAL	QTY	SF	TOTAL	QTY	SF	TOTAL
ADMINISTRATION												
Entrance Lobby**	--	--	--	--	--	--	--	--	--	--	--	--
Welcome Center	1	460	460	1	500	500	1	550	550	1	650	650
Security Area	1	75	75	1	75	75	1	75	75	1	75	75
Conference Room	1	200	200	1	200	200	1	200	200	1	200	200
Principal's Office	1	200	200	1	200	200	1	200	200	1	200	200
Administrative Office	2	150	300	2	150	300	2	150	300	3	150	450
Administrative Workroom	1	250	250	1	250	250	1	250	250	1	400	400
Records Room	1	150	150	1	150	150	1	150	150	1	150	150
Parent Resource Center*	1	200	200	1	200	200	1	200	200	1	200	200
Counselor's Office	1	150	150	1	150	150	2	150	300	2	150	300
Student Services	2	150	300	2	150	300	2	150	300	2	150	300
Student Services Conference	1	200	200	1	200	200	1	200	200	1	200	200
Extra-curricular Workroom / Program Office	1	300	300	1	300	300	1	300	300	1	300	300
Staff Lounge	1	450	450	1	450	450	1	450	450	1	450	450
Wellness / Lactation Room	1	150	150	1	150	150	1	150	150	1	150	150
TOTAL			3,385			3,425			3,625			4,025





Comments //

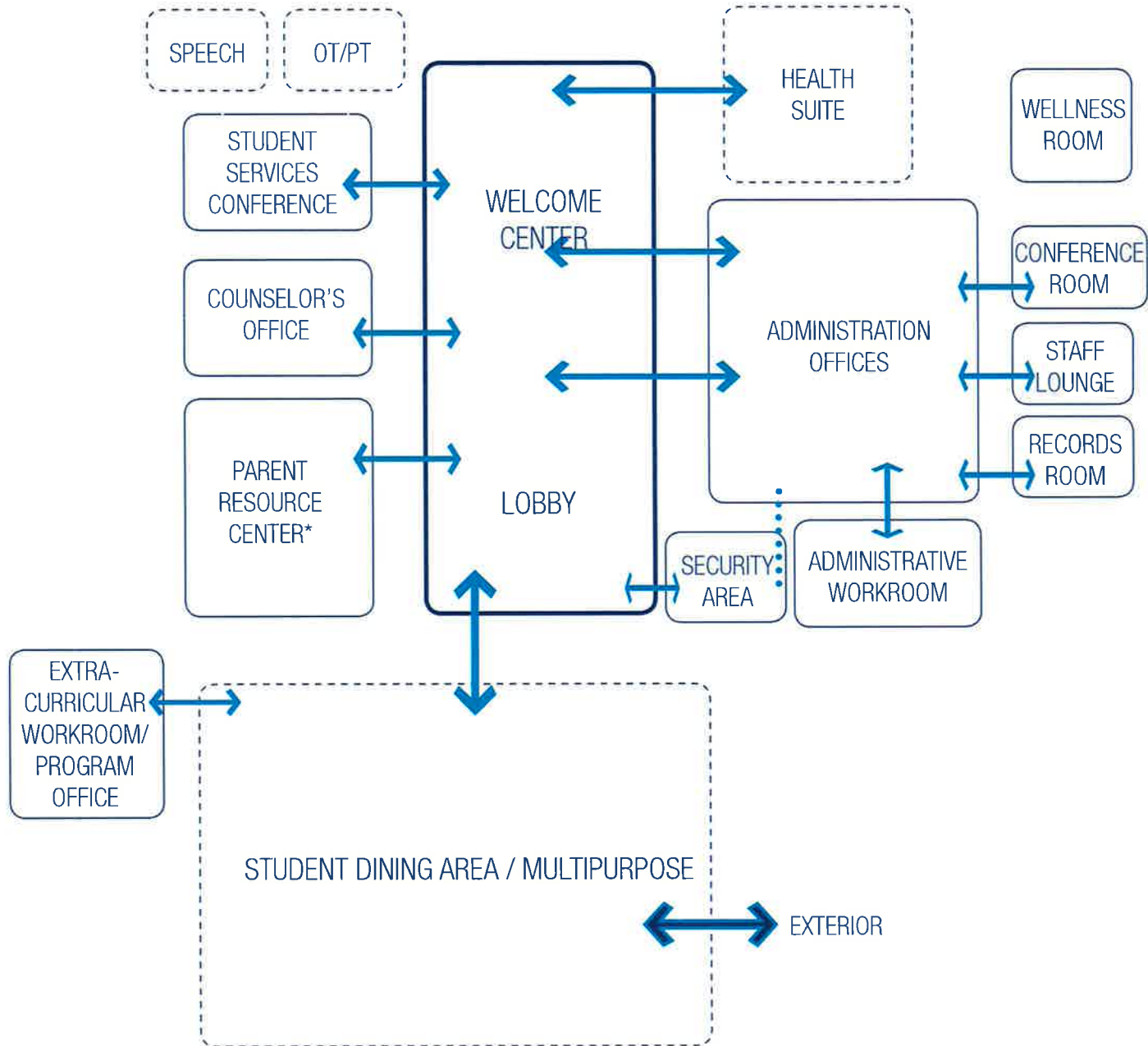
*This space is optional. The inclusion of this space will be determined during the site-specific Ed Spec process and approved by DCPS.

**The size and quantity of these spaces to be determined during site specific Ed Spec and design, included as part of Gross Up in prototype.

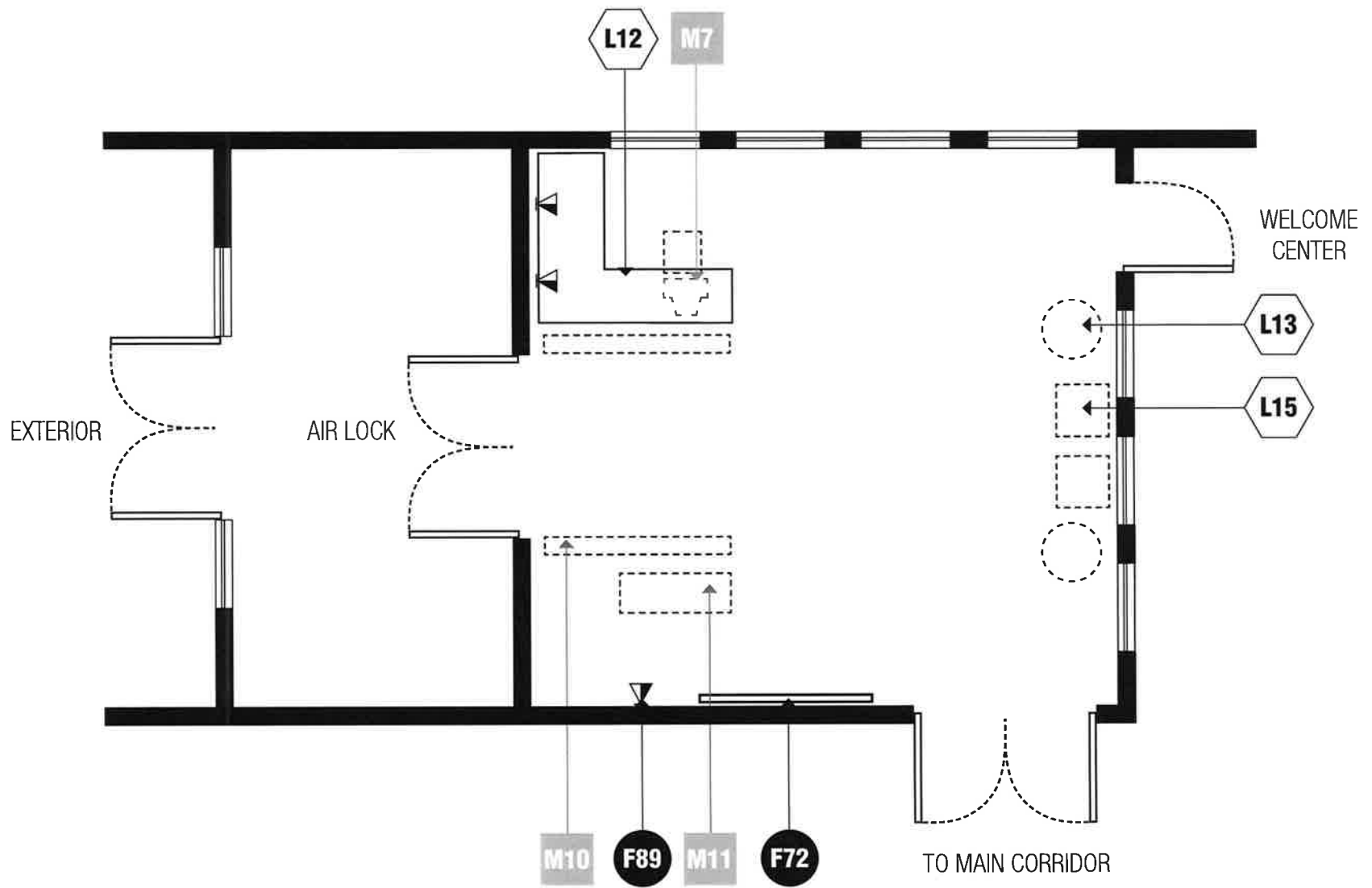
Note: In this document, staff assumptions were made to ensure staff spaces were approximately correct at each capacity model. Specific square footage requirements and quantity of spaces will be completed during the site specific ed spec process. Assumptions for the capacity model are: 325 students : 51 staff; 400 students : 57 staff; 500 students : 66 staff; 700 students: 81 staff.

KEY ///

- direct access 
- linked space 
- enclosed space 
- open space 



ADMINISTRATION ADJACENCY DIAGRAM



E-AD-1 /// ENTRANCE LOBBY

capacity/users

3-4 staff members
security officers

ancillary spaces

n/a

spatial relationships

adjacent to main entry
direct access to welcome center
direct access to security area

goals

to greet visitors and provide a welcoming
access to the school
to serve as a check-in and checkpoint for
school visitors and attendees

activities

greet and welcome students, staff, and
visitors
central gathering and meeting area for
school community
security screenings of students, staff, and
visitors
monitor main entrance to school

environmental considerations

uniform and controllable lighting
environmental sound control
aesthetically pleasing
windows for natural sunlight
acoustically treated

LEGEND ///

● **fixed furnishings**

F72 3D displays

▶ F89 data drop

⬡ **loose furnishings**

L12 admin workstation and chair

L13 small table

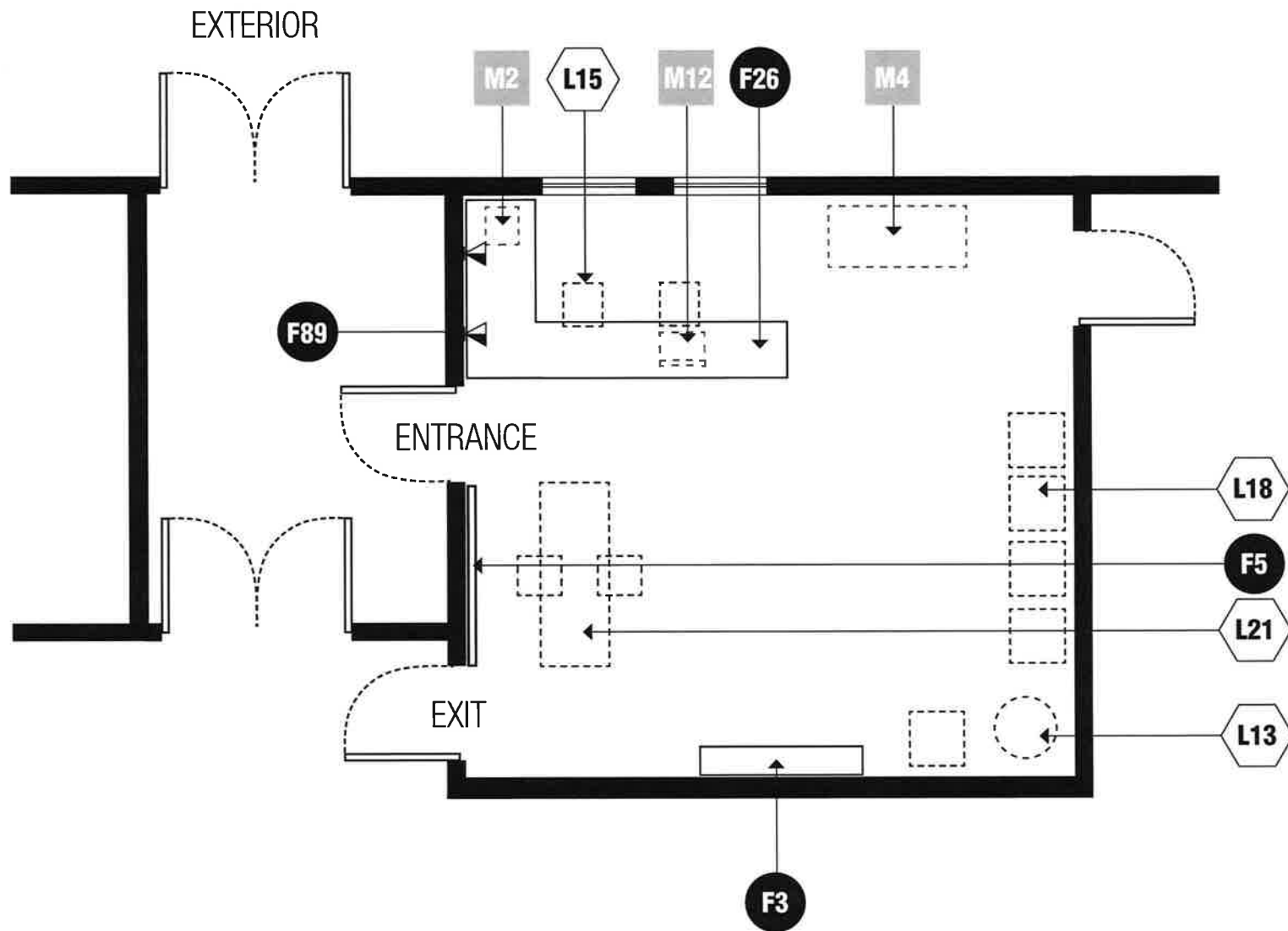
L15 task chair

■ **AV & IT equipment**

M7 desktop computer

M10 metal detectors

M11 x-ray equipment



E-AD-2 /// WELCOME CENTER

size

460-650 SF

capacity/users

10 people

administrative assistants

visitors/parents

students

ancillary spaces

n/a

spatial relationships

located inside the main administrative area directly accessible from entry vestibule

near public restrooms

maximize views to exterior and main entry

public address alcove

closet (lockable)

goals

to provide a space designed to help students and visitors feel welcomed and to provide easily accessed information

activities

greeting visitors

waiting for students or staff

student waiting/pick up area

workstation for administrative assistant

environmental considerations

uniform and controllable lighting

adequate ventilation

environmental sound control

electrical outlets for equipment

windows to provide natural sunlight

administrative area should be

mechanically zoned for year round use

interior windows

no visual access to the public of

computer screens, paperwork, etc.

LEGEND ///**● fixed furnishings**

F3 wall shelving

F5 tackable/magnetic wall surface

F26 reception counter

▶ F89 data drop

◻ loose furnishings

L13 small table (3)

L15 task chair (4)

L18 lounge chairs (4-6)

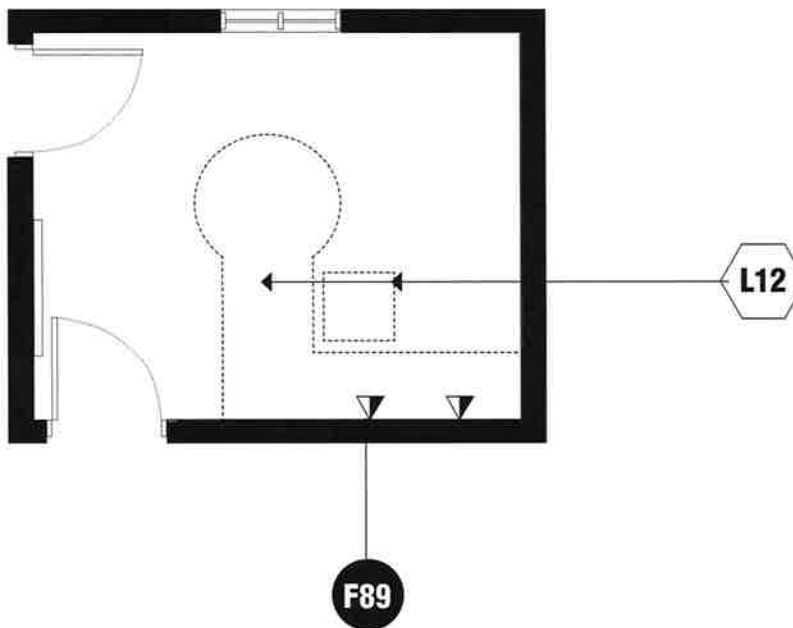
L21 work table (for check in station)

■ AV & IT equipment

M2 color printer

M4 photocopy machine

M12 laptop computer



E-AD-3 /// SECURITY AREA

size

75 SF

capacity/users

1 staff member

ancillary spaces

n/a

spatial relationships

adjacent to main entry

goals

to serve as a check-in and checkpoint for non-school visitors

activities

check-in/out visitors
monitor main entrance to school
workstation for security office

environmental considerations

uniform and controllable lighting
environmental sound control
recessed electrical outlets located in floor

LEGEND ///

● **fixed furnishings**

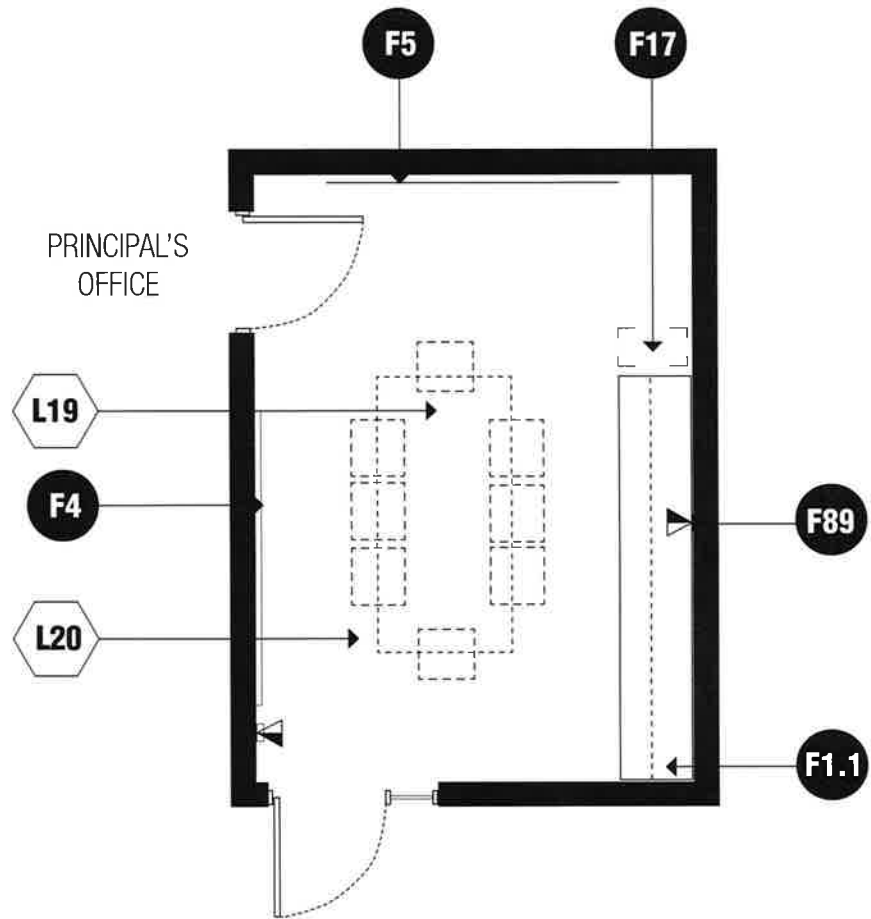
▶ F89 data drop

◻ **loose furnishings**

L12 admin workstation with chair

■ **AV & IT equipment**

n/a



E-AD-4 /// CONFERENCE ROOM

size

200 SF

capacity/users

6-8 people

ancillary spaces

n/a

spatial relationships

near welcome center

centrally located within administrative area

adjacent and access to principal's office

goals

to provide a place for administrative conferences or meetings

activities

conferences with staff, parents, and visitors

environmental considerations

uniform and controllable lighting

environmental sound control

electrical outlets for equipment

windows to provide natural sunlight, desirable

auditory privacy

LEGEND ///

● fixed furnishings

F1.1 casework

F4 marker board (6 LF minimum)

F5 tackable/magnetic wall surface (6 LF minimum)

F110 2D display

▶ F89 data drop

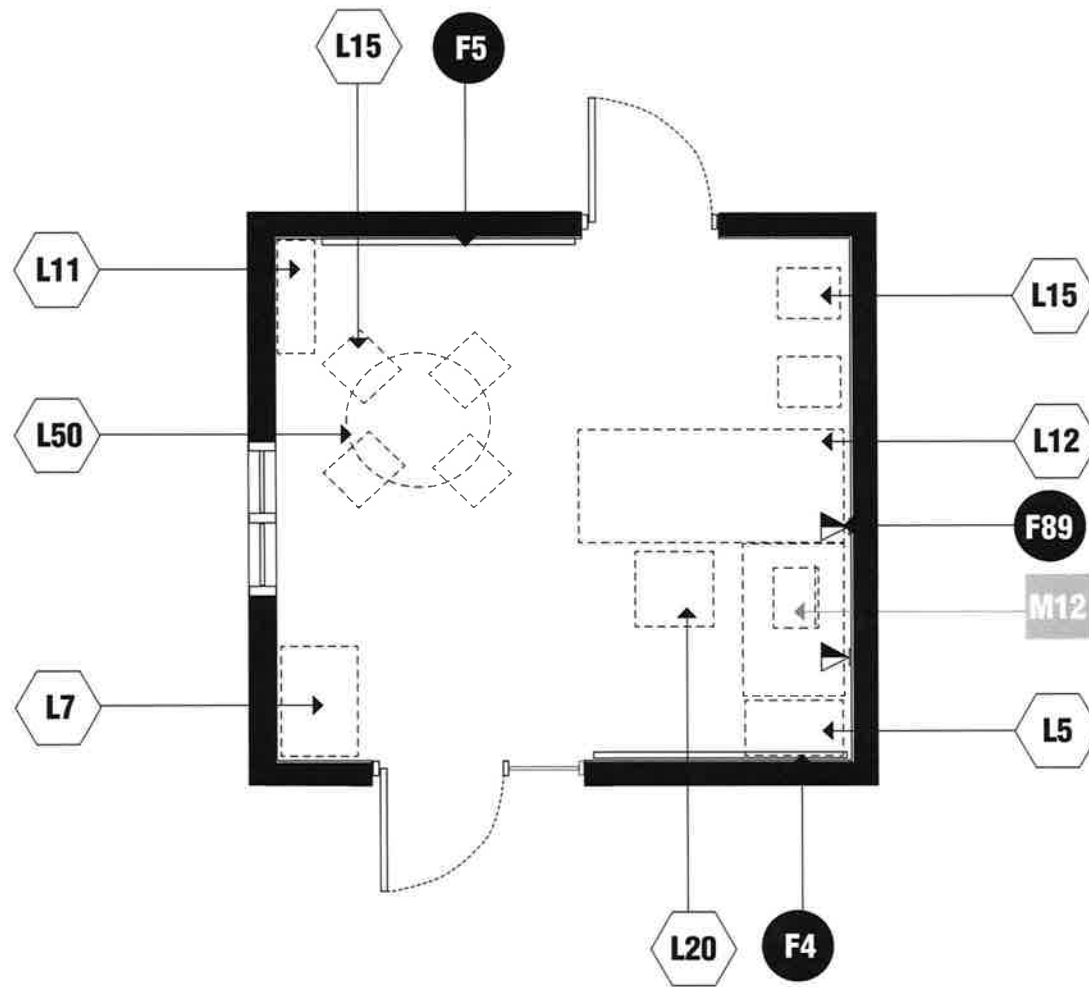
◻ loose furnishings

L19 conference table (with technology installations - VGA jacks, data outlets, power outlets, etc.)

L20 executive chair (8)

■ AV & IT equipment

n/a



E-AD-5 /// PRINCIPAL'S OFFICE

size

200 SF

capacity/users

1-5 people

ancillary spaces

conference room (E-AD-4)

spatial relationships

near main entry

near administrative assistant

adjacent and access to conference room

goals

to provide an office for the principal to
give instructional leadership in a
personal and organized environment
for students, staff, and community

activities

conferences with staff, parents, and
visitors

curriculum development

research and planning

telephone communications

dealing with personnel issues

coordination of school and support
services

environmental considerations

uniform and controllable lighting

environmental sound control

electrical outlets for equipment

windows to provide natural sunlight,
desirable

auditory privacy

view to entrance, parking lot and/or
circulation (optional)

LEGEND ///**● fixed furnishings**

F4 marker board

F5 tackable/magnet wall surface (6 LF min)

▶ F89 data drop

◻ loose furnishings

L5 four drawer file cabinet

L7 teacher's lockable wardrobe

L11 adjustable height bookshelves (12 LF)

L12 admin workstation and chair

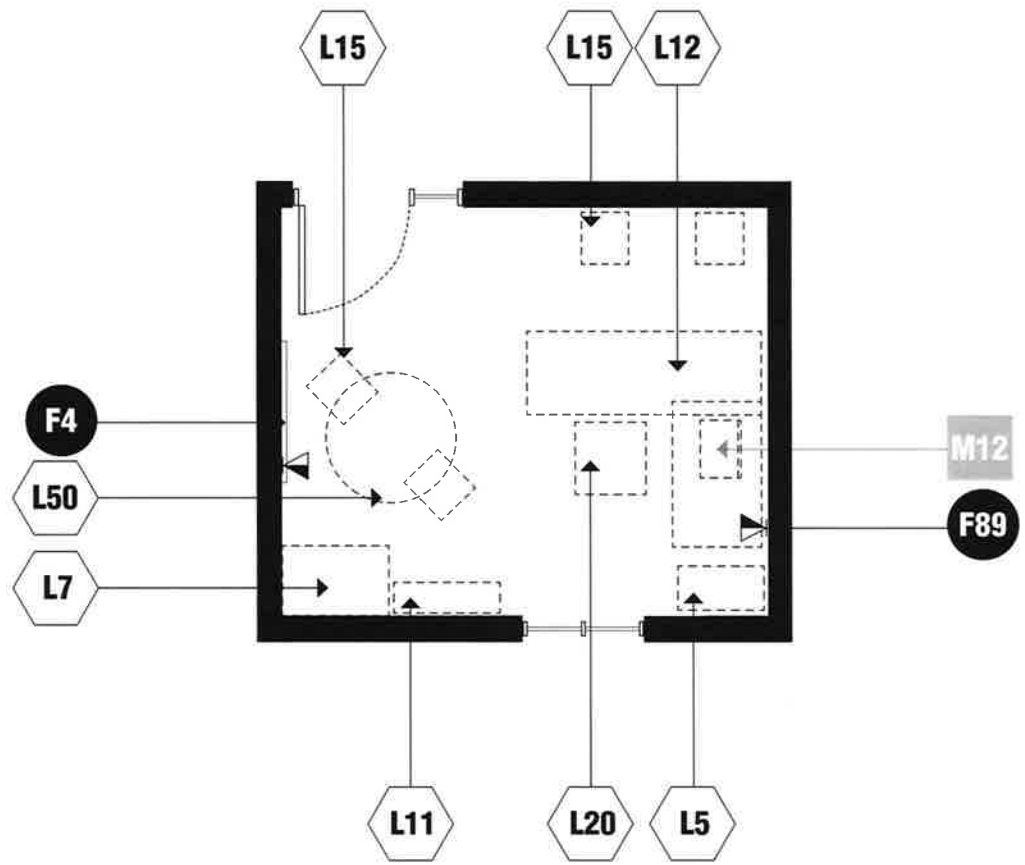
L15 task chair (4-6)

L20 executive chair

L50 small conference table

■ AV & IT equipment

M12 laptop computer



E-AD-6 /// ADMINISTRATIVE OFFICE

size

150 SF

capacity/users

1-4 people

ancillary spaces

n/a

spatial relationships

may be located near academic core for supervision

may be located near administration suite

goals

to provide an office for the assistant principal or other administrative staff to perform administrative functions

activities

conferences with parents

student interaction

conferences with individual teachers or small groups

telephone communications (private)

research and planning

coordination of school and support services

environmental considerations

uniform lighting, areas of soft lighting

environmental sound control

electrical outlets for equipment

windows to provide natural sunlight, desirable

auditory privacy

LEGEND ///

● fixed furnishings

F4 marker board (6 LF minimum)

▶ F89 data drop

◻ loose furnishings

L5 four drawer lateral file cabinet

L7 teachers lockable wardrobe

L11 adjustable height bookshelves (12 LF)

L12 admin workstation and chair

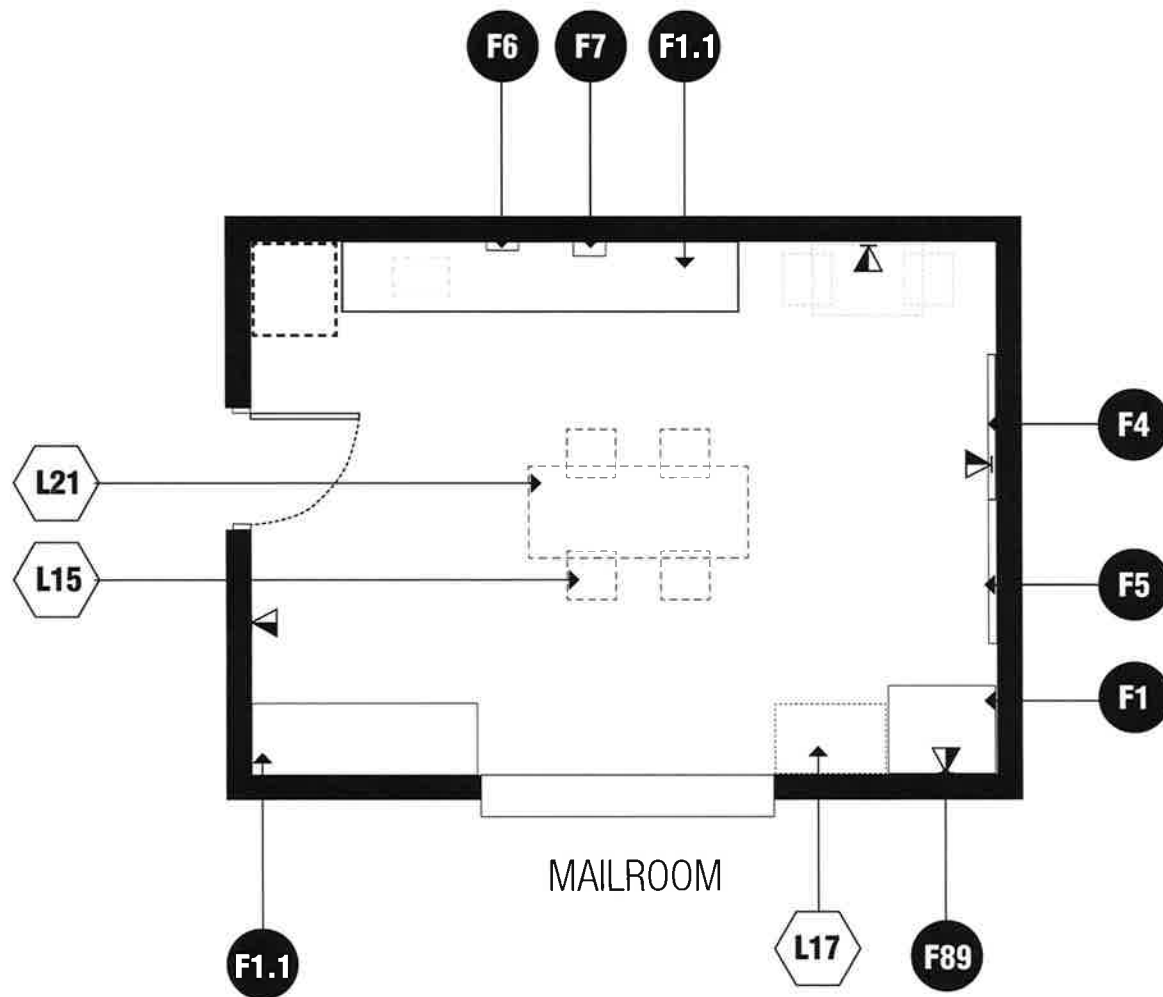
L15 task chair (2-4)

L20 executive chair

L50 small conference table

■ AV & IT equipment

M12 laptop computer



E-AD-7 /// ADMINISTRATIVE WORKROOM

size

250-400 SF

capacity/users

2-3 people

ancillary spaces

n/a

spatial relationships

near welcome center
adjacent to mail room

goals

to provide an area for information to be
recorded

activities

copying
collating
sorting of files
preparing communications for mailing
binding reports
telephone communications

environmental considerations

uniform lighting, areas of soft lighting
environmental sound control
electrical outlets for equipment
auditory privacy

LEGEND ///

● fixed furnishings

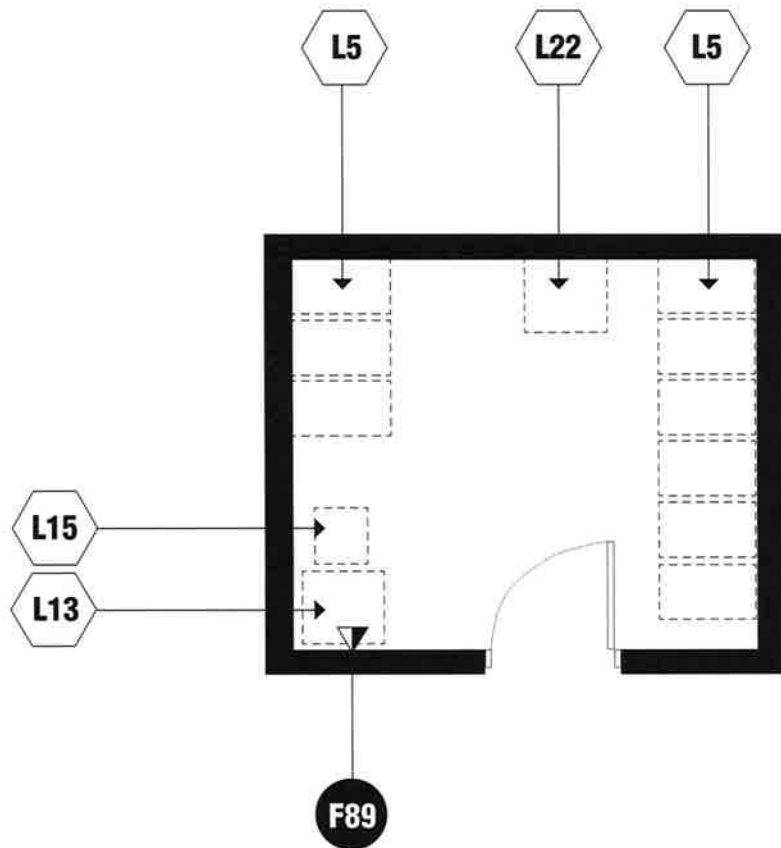
F1 base/wall cabinets and shelving
F1.1 casework (mail slots - 12" wide x 6" high
x 15" deep with 65, 80, 95 total slots and
pass-through cabinets below)
F4 marker board (6 LF min)
F5 tackable/magnetic wall surface (6 LF min)
F6 soap dispenser
F7 towel dispenser
▶ F89 data drop

◻ loose furnishings

L15 task chair (2-4)
L17 printer station
L21 work table

■ AV & IT equipment

n/a



E-AD-8 /// RECORDS ROOM

size

150 SF

capacity/users

1-2 people

ancillary spaces

n/a

spatial relationships

near main office

goals

to provide secure, fireproof, and adequate storage for money, records, and other valuable items

activities

storing of money and other valuable items
storage of files and records
accessible to administration staff

environmental considerations

uniform and controllable lighting
security of door

LEGEND ///

● **fixed furnishings**

▶ F89 data drop

⬡ **loose furnishings**

L5 four drawer lateral file cabinet (8-10
fireproof file cabinets)

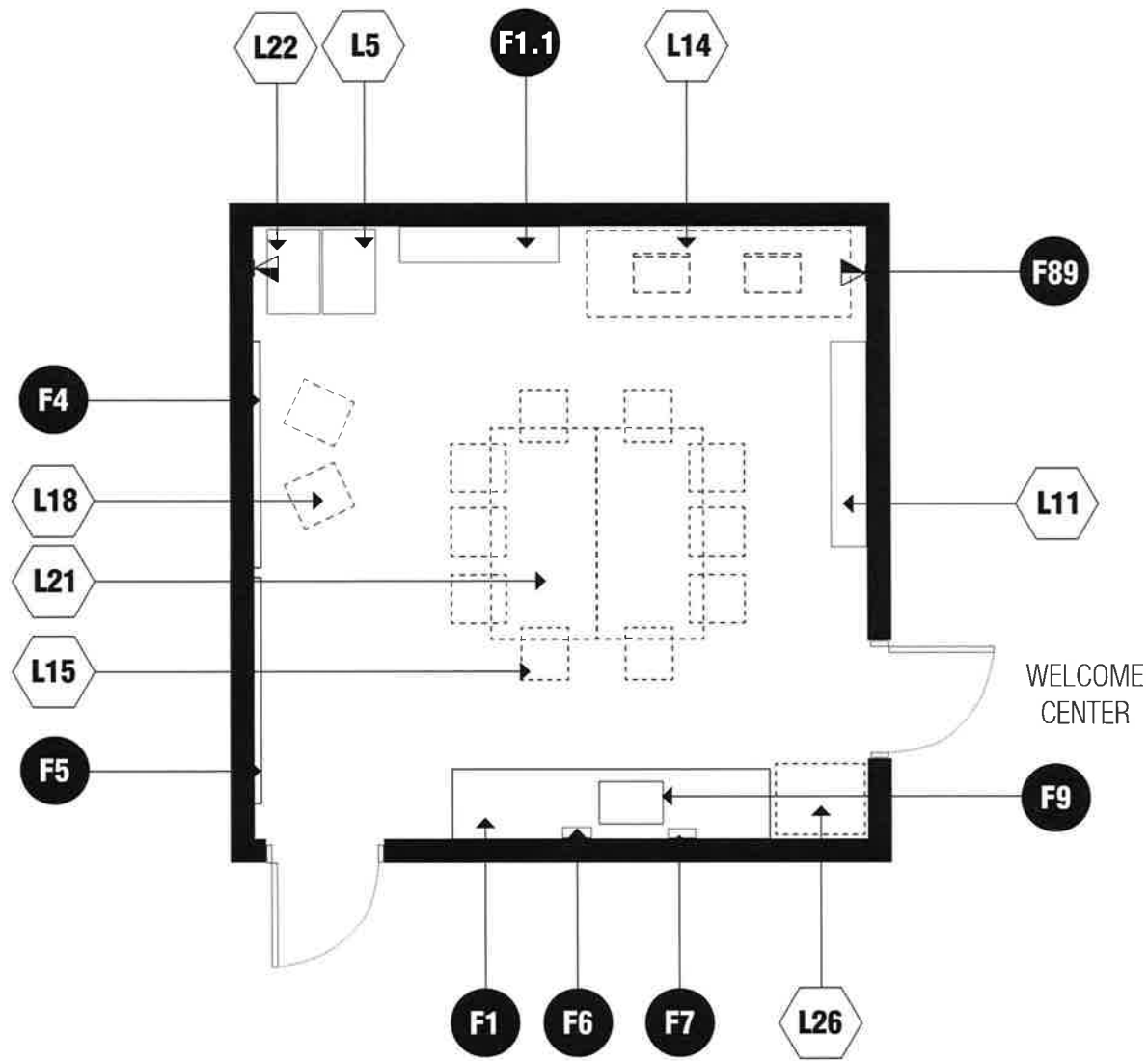
L13 small table

L15 chair

L22 safe

■ **AV & IT equipment**

n/a



E-AD-9 /// PARENT RESOURCE CENTER (OPTIONAL)

size

200 SF

capacity/users

1-8 people

ancillary spaces

n/a

spatial relationships

near principal's office

near welcome center

goals

*only required in title 1 schools, optional
in all other schools

to provide a place for parents to meet and
work when they volunteer at school

to provide a place for parents to store
their personal belongings

to provide a space for parents to check
out and use parenting sources

activities

small group meetings

work area

storage for personal items

parent training

private consultation

parent employment research

volunteer registration

environmental considerations

uniform and controllable lighting

environmental sound control

moisture and stain resistant finishes

adequate exhaust/ventilation

LEGEND ///**● fixed furnishings**

F1 base/wall cabinets and shelving

F1.1 casework (wall cabinets)

F4 marker board

F5 tackable/magnet wall surface

F6 soap dispenser

F7 towel dispenser

F9 classroom sink

F18 mirror

▶ F89 data drop

◻ loose furnishings

L2 stackable/nesting tables

L5 four drawer lateral file cabinet

L11 adjustable height bookshelves (20 LF)

L14 computer workstation (2-3 - laptop)

L15 task chair (10)

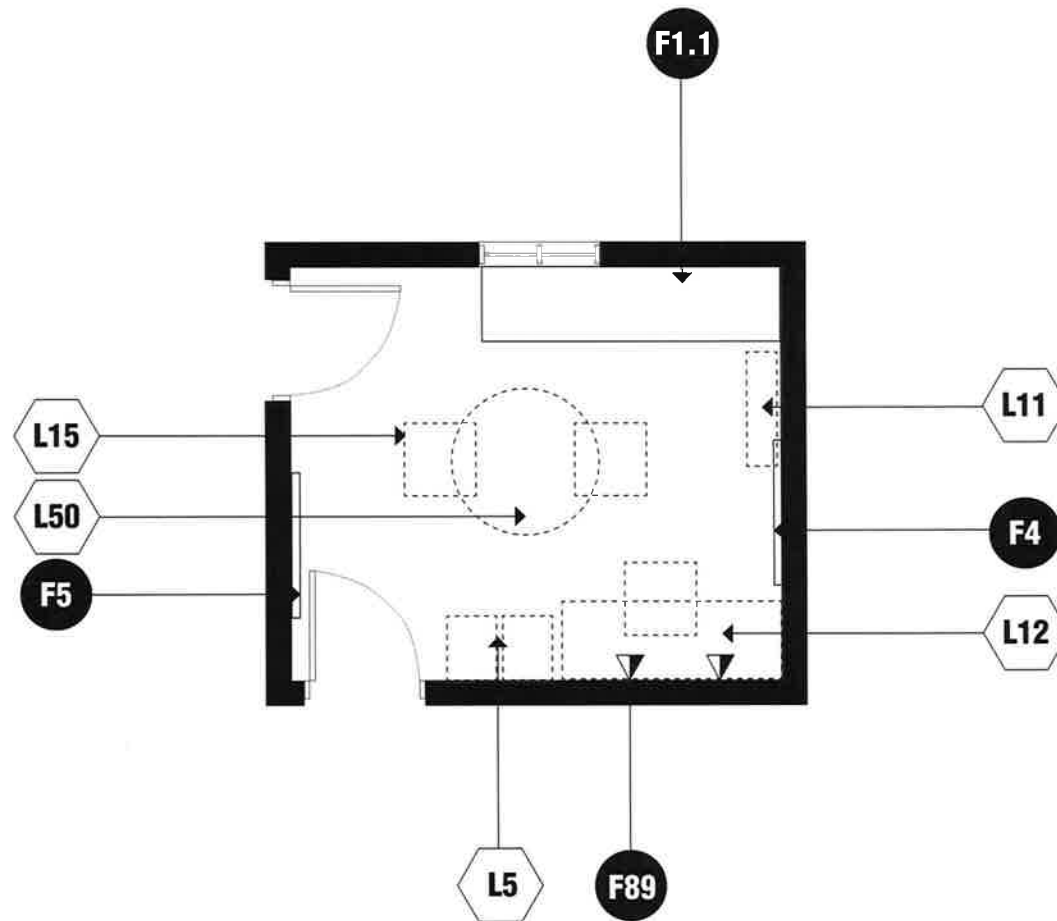
L18 lounge chairs

L22 safe

L26 refrigerator

■ AV & IT equipment

n/a



E-AD-10 /// COUNSELOR'S OFFICE

size

150 SF

capacity/users

2-3 people

ancillary spaces

n/a

spatial relationships

near student services

near welcome center

goals

to provide counseling and other student support services in a professional environment that is easily accessible to students, staff, parents, and the community

activities

counseling for students and parents
administrative paperwork
enrollment and orientation of new students

environmental considerations

uniform lighting
environmental sound control
electrical outlets for equipment
windows to provide natural light

LEGEND ///

● fixed furnishings

F1.1 casework (8 LF)

F4 marker board

F5 tackable/magnetic wall surface (6 LF min)

▶ F89 data drop

⬡ loose furnishings

L5 four drawer lateral file cabinet (2)

L11 adjustable height bookshelves

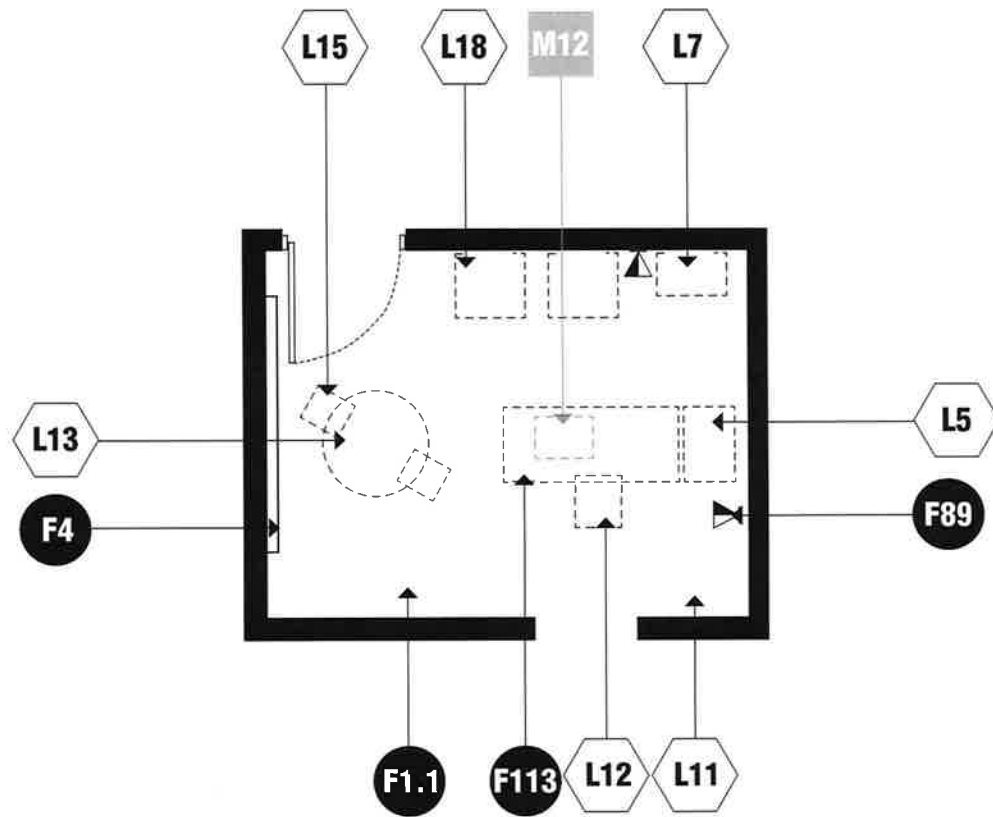
L12 admin workstation and chair

L15 task chair (2)

L50 small conference table (round - 4 people)

■ AV & IT equipment

n/a



E-AD-11 /// STUDENT SERVICES

size

150 SF

capacity/users

1-4 people

counselors

psychologist

social worker

students and parents

staff

teachers

ancillary spaces

n/a

spatial relationships

near academic core areas

near staff restrooms

goal

provide a flexible space to accommodate
mental health services, counselors,
and small group meetings

activities

one-on-one counseling

group counseling

parent teacher meetings

mental health services

environmental considerations

windows to provide natural light on an
exterior wall if possible

environmental sound control

uniform and controllable lighting

auditory and visual privacy

lite in door for visual access and security
purposes

LEGEND ///**● fixed furnishings**

F1.1 casework (12 LF, lockable)

F4 marker board (6 LF minimum)

▶ F89 data drop

F113 IEP fax line

⬡ loose furnishings

L5 four drawer lateral file cabinet

L7 teacher's lockable wardrobe (optional)

L11 adjustable height bookshelves

L12 admin workstation and chair

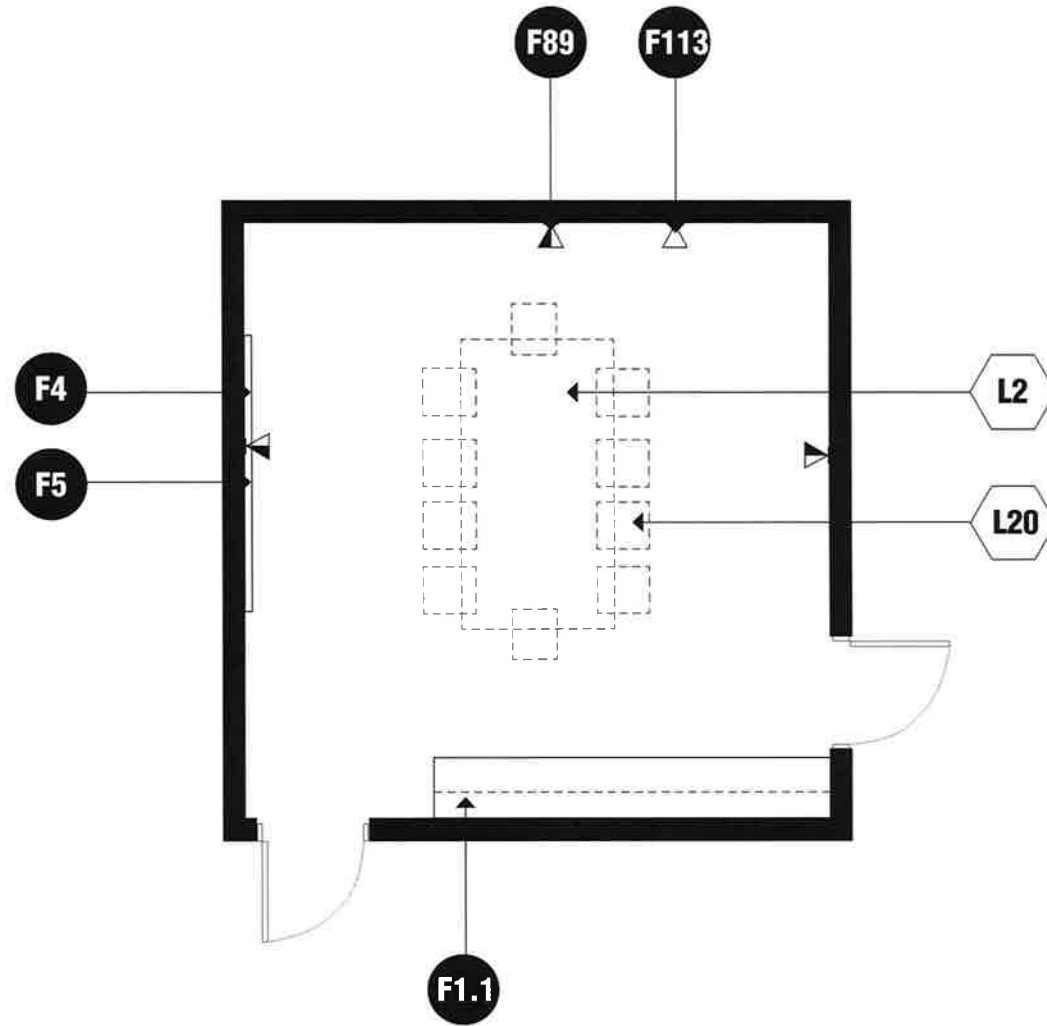
L13 small table

L15 task chair

L18 lounge chair

■ AV & IT equipment

M12 laptop computer



E-AD-12 /// STUDENT SERVICES CONFERENCE

size

200 SF

capacity/users

6-8 people

ancillary spaces

n/a

spatial relationships

adjacent and access to speech and ot/pt

goals

to provide a place for administrative and student conferences or meetings

activities

conference with staff, students, parents, and visitors

environmental considerations

uniform and controllable lighting
environmental sound control
electrical outlets for equipment
auditory privacy
windows to provide natural light

LEGEND ///

● fixed furnishings

F1.1 casework (base with wall cabinets, 12 LF)

F4 marker board (6 LF min)

F5 tackable/magnetic wall surface (6 LF min)

▶ F89 data drop

F113 iep fax line

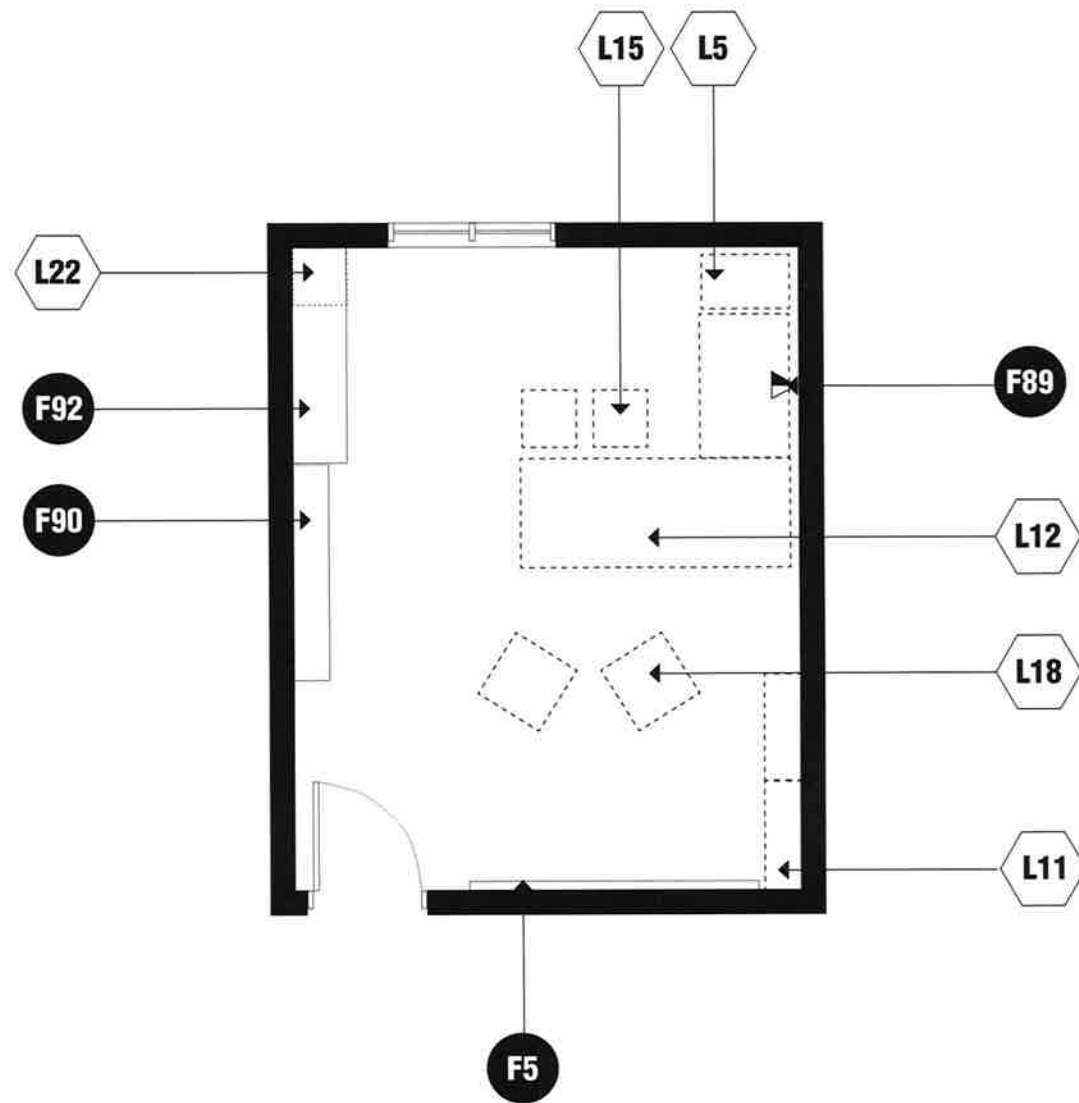
◻ loose furnishings

L2 stackable/nesting tables

L20 executive chairs (10)

■ AV & IT equipment

n/a



E-AD-13 /// EXTRA-CURRICULAR WORKROOM / PROGRAM OFFICE

size

300 SF

capacity/users

2-4 people

ancillary spaces

n/a

spatial relationships

near public use spaces

near gymnasium and student dining area/

multipurpose

access to main corridor

goals

office and storage area for before/after
school program coordinators

activities

administrative duties

storing and retrieving supplies and
equipment

teaching/tutoring and counseling

environmental considerations

uniform lighting, areas of soft lighting

environmental sound control

electrical outlets for equipment

windows to provide natural sunlight and
egress

LEGEND ///**● fixed furnishings**

F5 tackable/magnetic wall surface (6 LF min)

▶ F89 data drop

F90 storage shelving - 12" deep

F92 storage shelving - 18" deep

⬡ loose furnishings

L5 four drawer lateral file cabinet

L11 adjustable height bookshelves (12 LF)

L12 admin workstation and chair

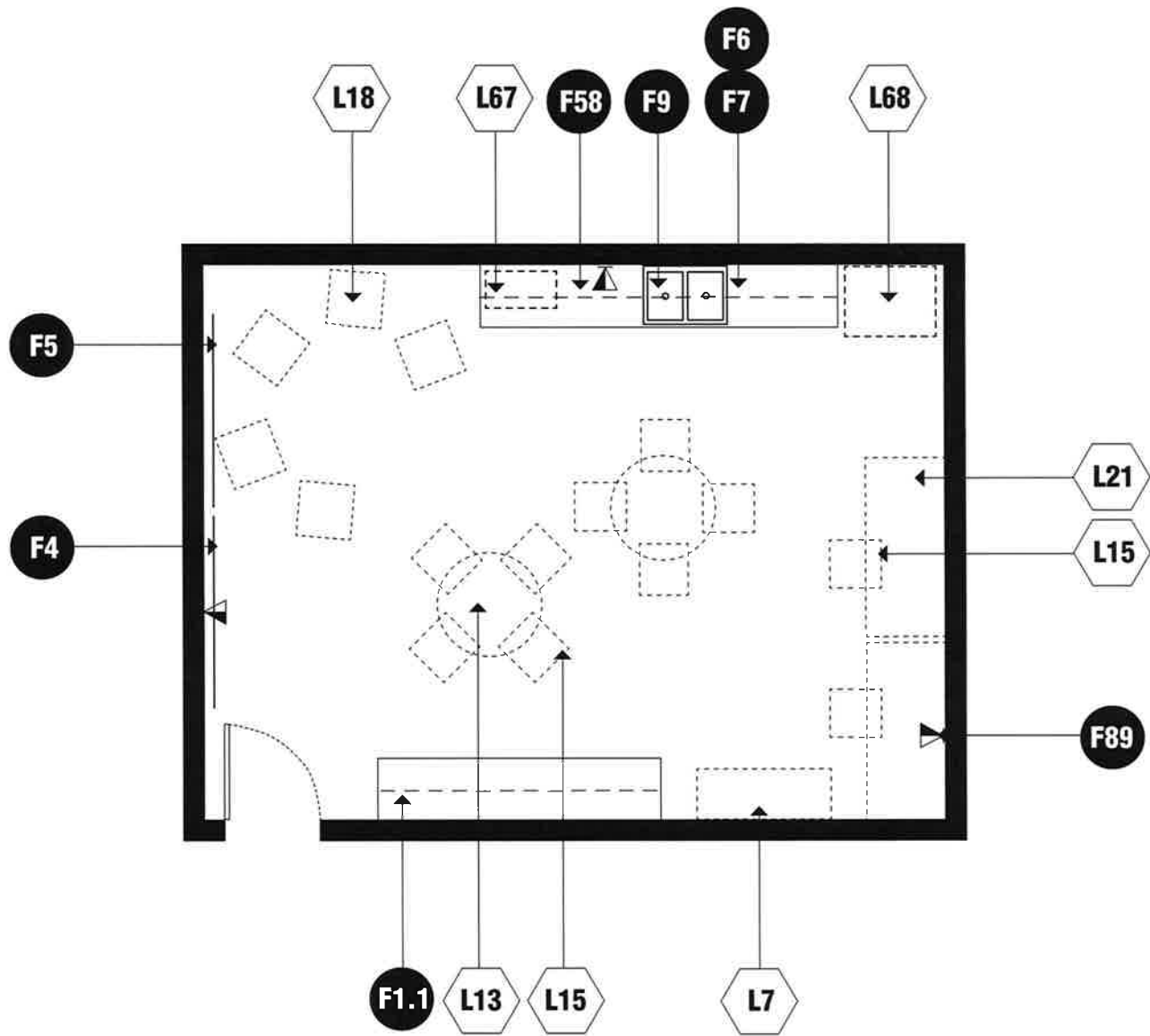
L15 task chair (2)

L18 lounge chair

L22 safe

■ AV & IT equipment

n/a



E-AD-14 /// STAFF LOUNGE

size

450 SF

capacity/users

10-20 people

ancillary spaces

n/a

spatial relationships

near welcome center

goals

to provide a place for teachers,
administrators, and staff to lounge,
collaborate and eat

activities

a breakout space for teachers,
administrators, and staff to lounge,
collaborate, eat and socialize

environmental considerations

uniform lighting, areas of soft lighting
environmental sound control
electrical outlets for equipment
auditory privacy

LEGEND ///

● fixed furnishings

F1 base/wall cabinets and shelving

F1.1 casework (base/wall cabinets and
shelving)

F4 marker board (6 LF min)

F5 tackable/magnetic wall surface (6 LF min)

F6 soap dispenser

F7 towel dispenser

F58 kitchenette

F82 drinking fountain with water bottle filler

▶ F89 data drop

◻ loose furnishings

L13 small tables - seat 4 (2+)

L15 task chairs (10-20)

L18 lounge chairs (5)

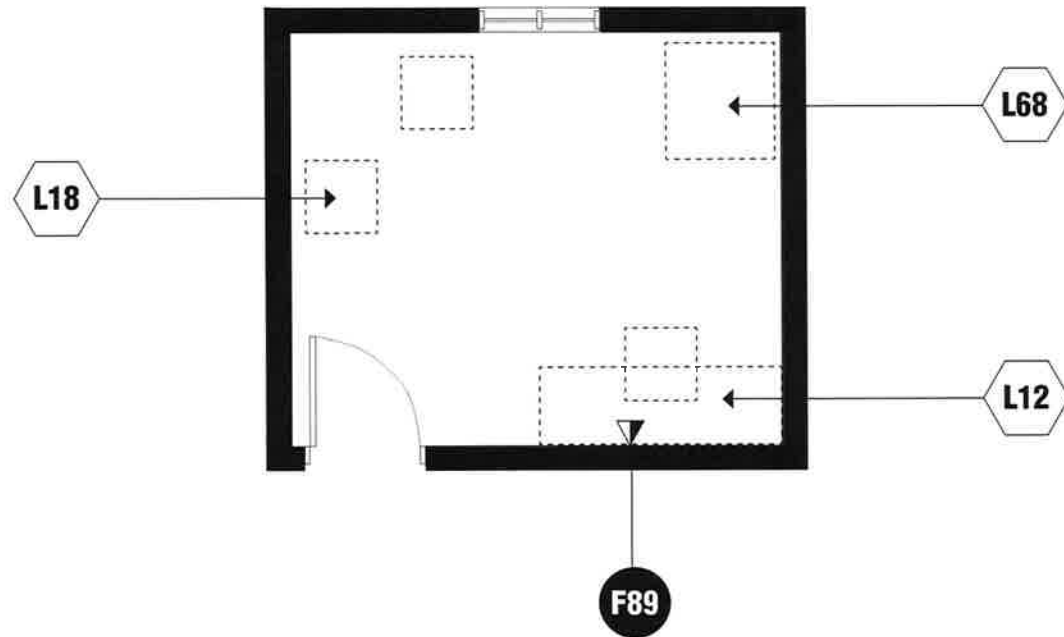
L21 work table (2) (rectangular along the wall)

L67 microwave

L68 refrigerator / commercial

■ AV & IT equipment

n/a



E-AD-15 /// WELLNESS / LACTATION ROOM

size

150 SF

capacity/users

1 person

ancillary spaces

n/a

spatial relationships

near staff lounge

goals

to provide a space for teachers and administrators wellness needs including pumping

activities

wellness and pumping

environmental considerations

uniform lighting, areas of soft lighting
environmental sound control
electrical outlets for equipment
auditory privacy
visual privacy

LEGEND ///

● **fixed furnishings**

▶ F89 data drop

⬡ **loose furnishings**

L12 admin workstation and chair

L18 lounge chair (2)

L68 commercial refrigerator

■ **AV & IT equipment**

n/a

E-HS /// **HEALTH SUITE**

WAITING AREA

TREATMENT AREA

COTS

OFFICE

TOILET

STORAGE

SPACE	325 STUDENTS			400 STUDENTS			500 STUDENTS			700 STUDENTS		
	QTY	SF	TOTAL	QTY	SF	TOTAL	QTY	SF	TOTAL	QTY	SF	TOTAL
HEALTH SUITE												
Waiting Area	1	150	150	1	150	150	1	150	150	1	150	150
Treatment Area	1	150	150	1	150	150	1	150	150	1	150	150
Cots	1	100	100	1	100	100	1	100	100	1	100	100
Office	1	100	100	1	100	100	1	100	100	1	100	100
Toilet	1	50	50	1	50	50	1	50	50	1	50	50
Storage	1	25	25	1	25	25	1	25	25	1	25	25
TOTAL			575			575			575			575

Comments //

Note: In this document, staff assumptions were made to ensure staff spaces were approximately correct at each capacity model. Specific square footage requirements and quantity of spaces will be completed during the site specific ed spec process. Assumptions for the capacity model are: 325 students : 51 staff; 400 students : 57 staff; 500 students : 66 staff; 700 students: 81 staff.

KEY ///

direct access 

linked space 

enclosed space 

open space 

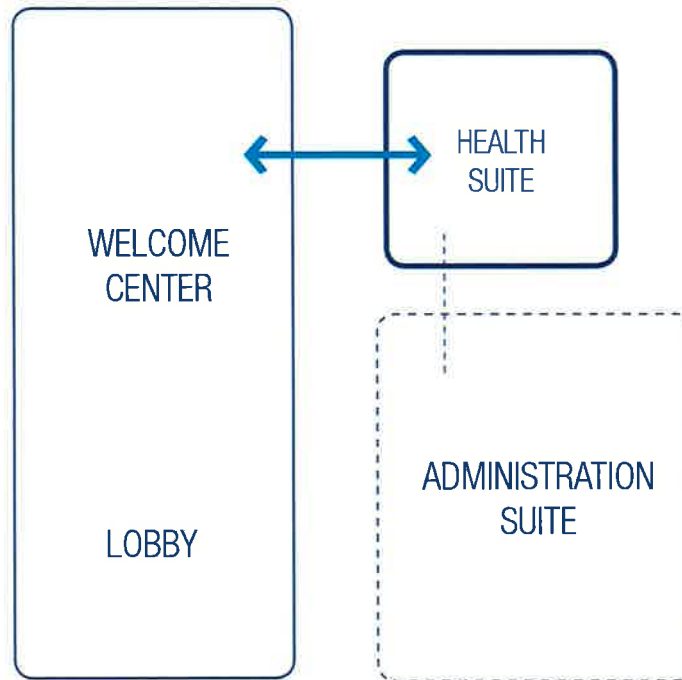
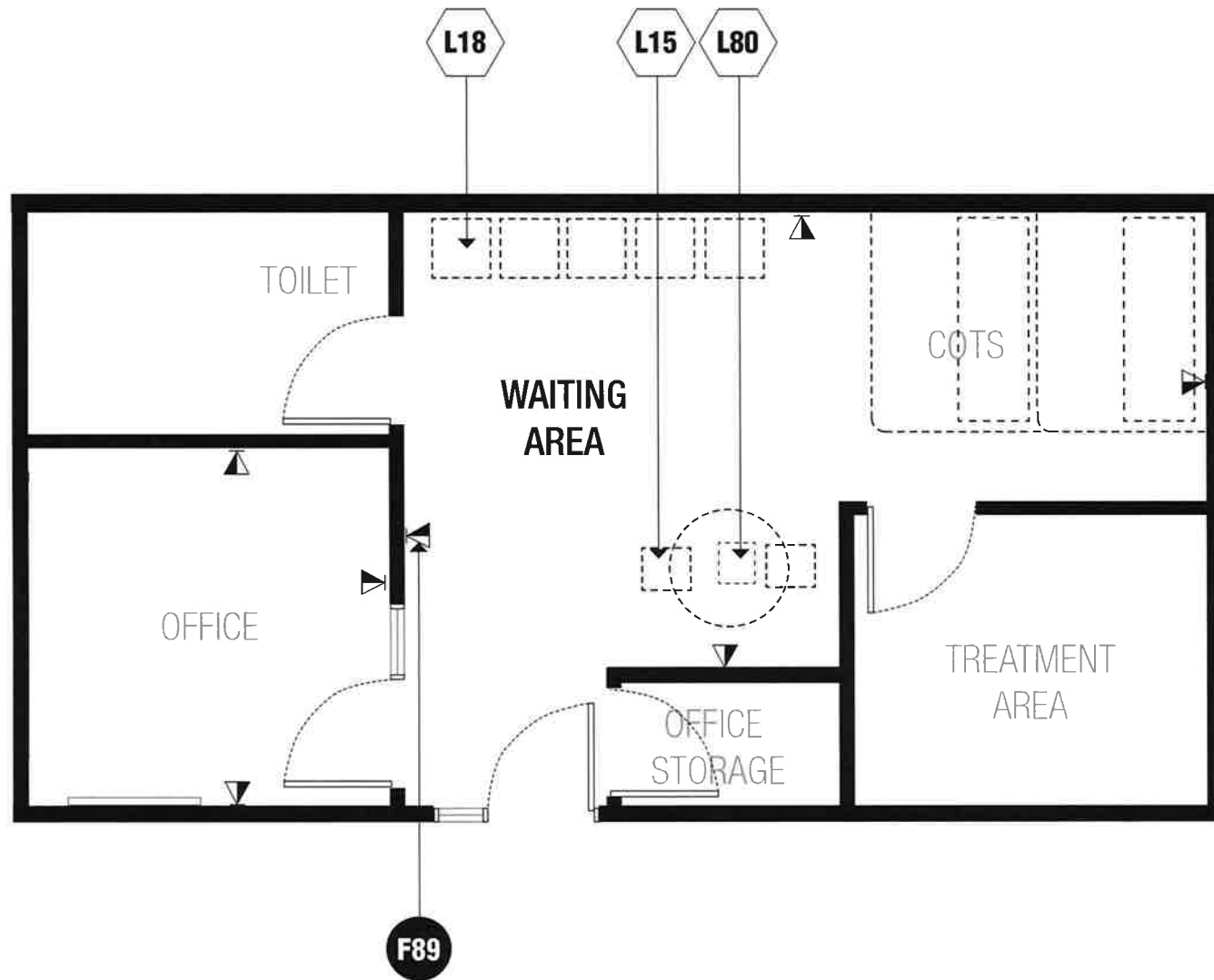


FIG. 39.0 // **HEALTH SUITE ADJACENCY DIAGRAM**



E-HS-1 /// WAITING AREA

size

150 SF

capacity/users

1-2 people

ancillary spaces

treatment area (E-HS-2)

storage (E-HS-6)

spatial relationships

may be located near academic core for supervision

may be located near administration suite

goals

administrative and meeting area for health

activities

meeting area for students, parents, or guardians

administrative activities by school nurse
private conversations

environmental considerations

uniform lighting, areas of soft lighting
environmental sound control
electrical outlets for equipment
visual and auditory privacy
visual control to welcome center or corridor

LEGEND ///

● fixed furnishings

▶ F89 data drop

⬡ loose furnishings

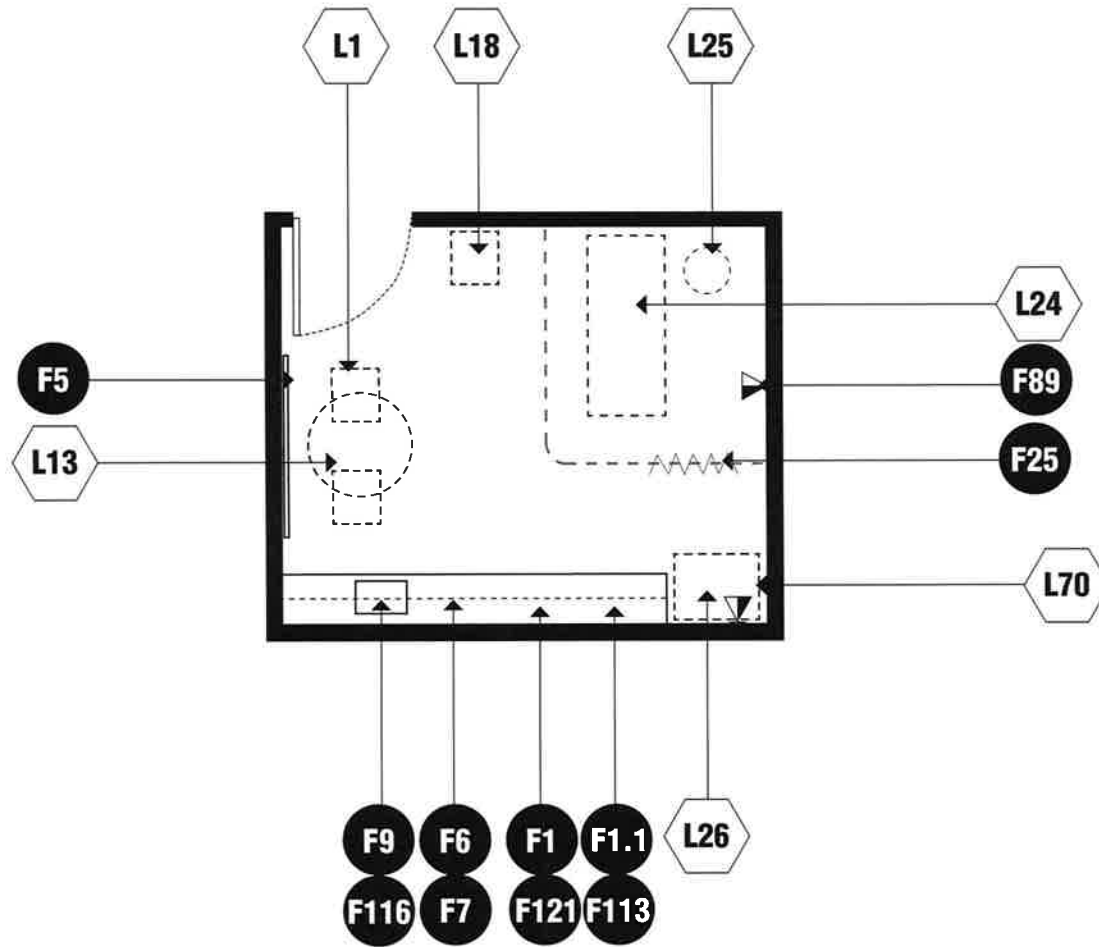
L18 lounge chair (non-porous)

L80 brochure display stand

■ AV & IT equipment

n/a

E-HS-1 /// WAITING AREA



E-HS-2 /// TREATMENT AREA

size

150 SF

capacity/users

1-2 people

ancillary spaces

waiting area (E-HS-1)

cots (E-HS-3)

office (E-HS-4)

toilet (E-HS-5)

storage (E-HS-6)

spatial relationships

near welcome center

near lobby entrance

goals

provide school based health services

activities

first aid

consultation with students

health screening

medical treatments

medication administration

student resting while awaiting pick-up by
parent or guardian

environmental considerations

uniform lighting, areas of soft lighting

environmental sound control, per current

Building Code, DCPS/DOH

requirements

electrical outlets for equipment

auditory and visual privacy

stain resistant floor covering

sink with hot and cold water

adequate ventilation

locate away from rooms with copiers,

interferes with hearing screening

visual control to waiting area,

welcome center, and cots.

all surfaces and furnishings should be

non-porous for easy cleaning

all doors should be locked for privacy, but

should be lockable from the outside

with a key

LEGEND ///**● fixed furnishings**

F1 base/wall cabinets and shelving (place for
refrigerator connected to back-up
generator)

F1.1 casework (seamless non-porous
counter)

F5 tackable/magnetic wall surface (6 LF min)

F6 soap dispenser

F7 towel dispenser

F9 classroom sink

F25 treatment cubicle curtains - Ceiling
mounted curtains to provide privacy

to each cot. Must be easily removable for
cleaning; solid panel for privacy with
mesh at top for ventilation

▶ F89 data drop

F113 IEP fax line

F116 sink mounted eye washing station

F121 wall-mounted medication cabinet
(lockable)

◻ loose furnishings

L1 stackable/nesting chairs (2-3)

L13 small table

L18 lounge chairs

L24 mobile exam table

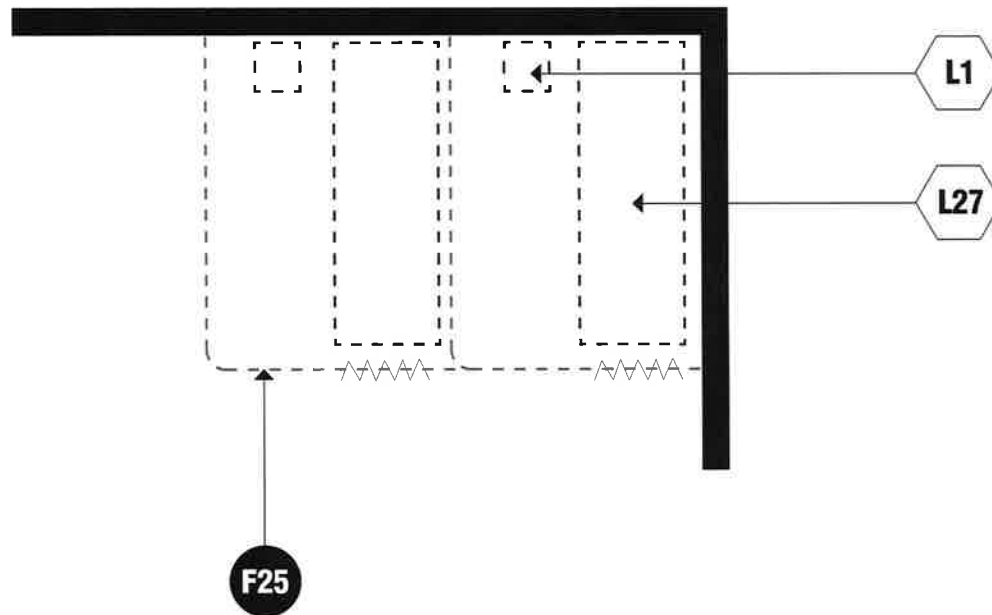
L25 nurse stool

L26 refrigerator (lockable)

L70 ice maker

🖨 AV & IT equipment

n/a



E-HS-3 /// COTS

size

100 SF

capacity

2-4 people

ancillary spaces

located near the toilet in the health suite

spatial relationships

located within health suite

near welcome center

near lobby entrance

goals

to provide school based health services

activities

a resting place for students and staff

when feeling ill

environmental considerations

uniform lighting, areas of soft lighting

environmental sound control

stain resistant floor covering

visual and auditory privacy

adequate ventilation

visual control from office and waiting or

welcome center

LEGEND ///

● fixed furnishings

F25 treatment cubicle curtains - Ceiling

mounted curtains to provide privacy

to each cot. Must be easily removable for

cleaning; solid panel for privacy with

mesh at top for ventilation

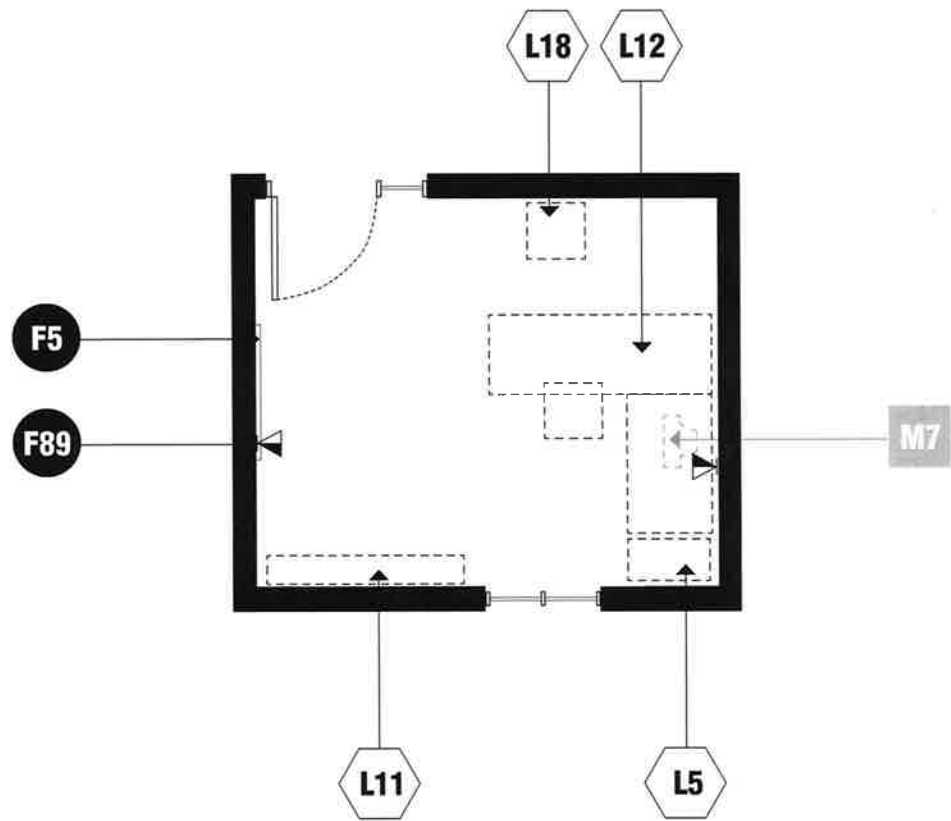
⬡ loose furnishings

L1 stackable/nesting chairs (2)

L27 health suite cot (2)

■ AV & IT equipment

n/a



E-HS-4 /// OFFICE

size

100 SF

capacity/users

1-3 people

ancillary spaces

treatment area (E-HS-2)

storage (E-HS-6)

spatial relationships

located within health suite

goals

to provide an office for the school nurse
to meet with parents, students, and
teachers

to provide an office for the school nurse
to perform administrative functions

activities

conferences with parents

student interaction

conferences with individual teachers or
small groups

telephone communications (private)

research and planning

coordination of school and support
services

environmental considerations

uniform lighting, areas of soft lighting

environmental sound control, per current
Building Code, DCPS/DOH
requirements

electrical outlets for equipment

windows to provide natural sunlight,
desirable

auditory privacy

visual control of cot area

visual connection to welcome center and/or
corridor, if possible

LEGEND ///**● fixed furnishings**

F5 tackable/magnetic wall surface (6 LF min)

▶ F89 data drop

⬡ loose furnishings

L5 four drawer lateral file cabinet

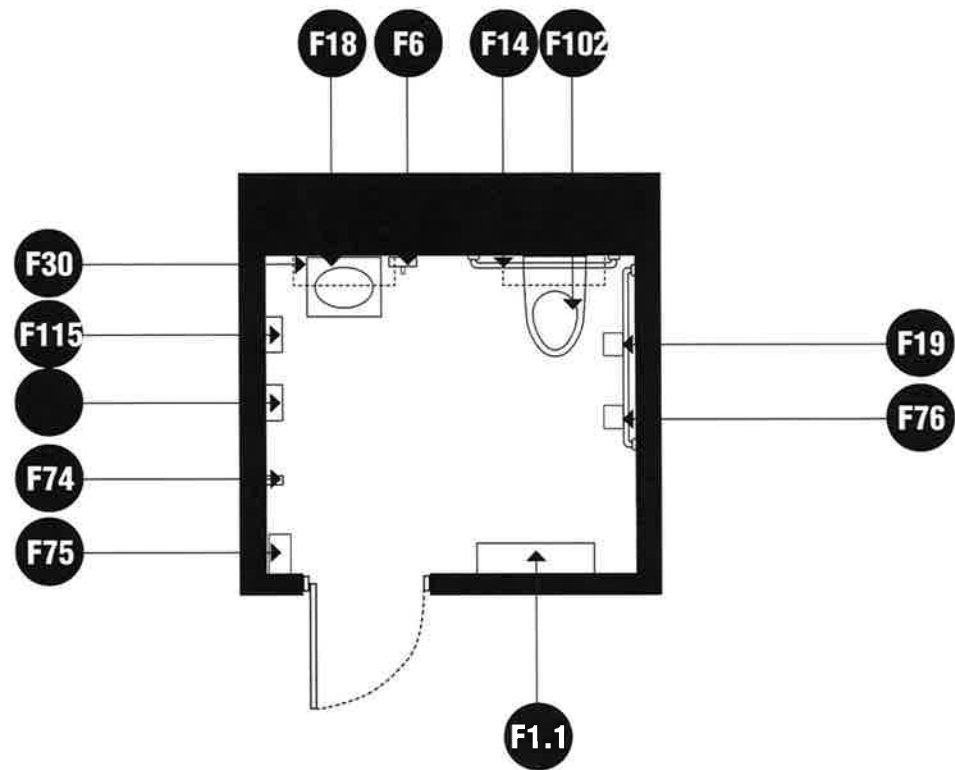
L11 adjustable height bookshelves (12 LF)

L12 admin workstation and chair

L18 lounge chair (1+)

■ AV & IT equipment

M7 desktop computer



E-HS-5 /// TOILET

size

50 SF

capacity/users

1 person

ancillary spaces

n/a

spatial relationships

located within health suite

goals

provide a private bathroom for health suite

activities

personal and health needs for the health suite
changing clothes

environmental considerations

uniform and controllable lighting
environmental sound control
adequate exhaust/ventilation
moisture- and stain- resistant finishes

LEGEND ///

● **fixed furnishings**

F1.1 casework (wall cabinets)

F6 soap dispenser

F7 towel dispenser

F14 36" and 42" grab bars

F18 mirror

F19 toilet tissue holder

F30 bathroom sink

F74 coat hook-bathroom accessory

F75 sanitary napkin dispenser

F76 sanitary napkin disposal

F102 toilet

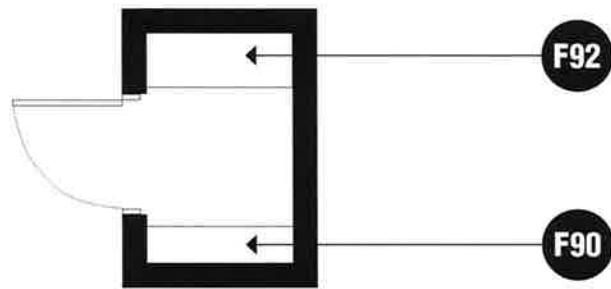
F115 hand dryer

◊ **loose furnishings**

N/A

■ **AV & IT equipment**

n/a



E-HS-6 /// STORAGE

size

25 SF

capacity/users

1 person

ancillary spaces

located near the toilet in the health suite

spatial relationships

adjacent and access to the waiting area

goals

to provide storage for medical supplies
and equipment

activities

storing chemicals, equipment, and
supplies

environmental considerations

uniform lighting
security of equipment, supplies, and
medicine
security of door

LEGEND ///

● **fixed furnishings**

F90 storage shelving (12" deep)

F92 storage shelving (18" deep)

◻ **loose furnishings**

n/a

■ **AV & IT equipment**

n/a

E-SD /// **STUDENT DINING**

STUDENT DINING AREA
MULTIPURPOSE (OPTIONAL)
STAGE (OPTIONAL)
CHAIR / TABLE STORAGE
KITCHEN AND FOOD PREPARATION
SERVING AREA
DRY FOOD STORAGE
FREEZER / COOLER
WARE WASHING
CLEANING STORAGE
FOOD SERVICE OFFICE
STAFF TOILET / SHOWER / LOCKERS

SPACE	325 STUDENTS			400 STUDENTS			500 STUDENTS			700 STUDENTS		
	QTY	SF	TOTAL	QTY	SF	TOTAL	QTY	SF	TOTAL	QTY	SF	TOTAL
STUDENT DINING												
Student Dining Area	1	2,030	2,030	1	2,500	2,500	1	3,125	3,125	1	4,375	4,375
Multipurpose* Stage**	--	--	--	--	--	--	--	--	--	--	--	--
Chair/Table Storage	1	150	150	1	175	175	1	200	200	1	275	275
Kitchen/Food Preparation***	1	650	650	1	650	650	1	650	650	1	650	650
Serving Area	1	275	275	1	275	275	1	300	300	1	400	400
Dry Food Storage	1	250	250	1	250	250	1	300	300	1	350	350
Freezer and Cooler	1	250	250	1	250	250	1	250	250	1	250	250
Ware Washing	1	100	100	1	100	100	1	150	150	1	200	200
Cleaning Storage	1	50	50	1	50	50	1	60	60	1	60	60
Food Service Office	1	150	150	1	150	150	1	150	150	1	150	150
Toilet/Lockers	1	150	150	1	150	150	1	150	150	1	150	150
TOTAL			4,055			4,550			5,335			6,860

Comments //

*This space is optional. The inclusion of this space will be determined during the site-specific Ed Spec process and approved by DCPS, based on whether or not a separate gymnasium and student dining area can be accommodated.

**Stage is listed as optional in this program and required in PE program. Final location of Stage to be determined

***Space program has been designed to accommodate a full-service kitchen. Space program should be confirmed by food service professional at time of site-specific Ed Spec development.

Note: In this document, staff assumptions were made to ensure staff spaces were approximately correct at each capacity model. Specific square footage requirements and quantity of spaces will be completed during the site specific ed spec process. Assumptions for the capacity model are: 325 students : 51 staff; 400 students : 57 staff; 500 students : 66 staff; 700 students: 81 staff.

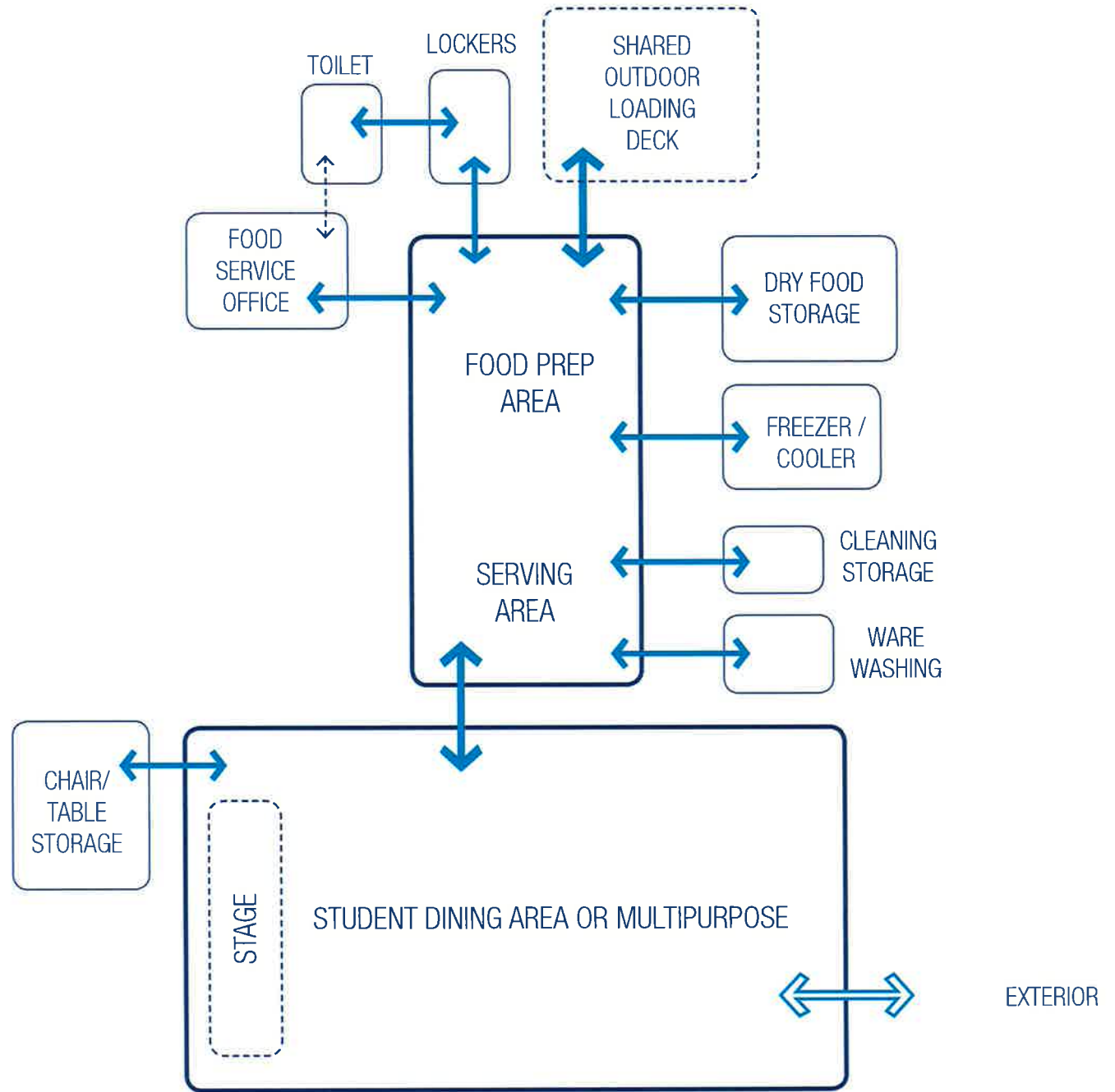
KEY ///

direct access 

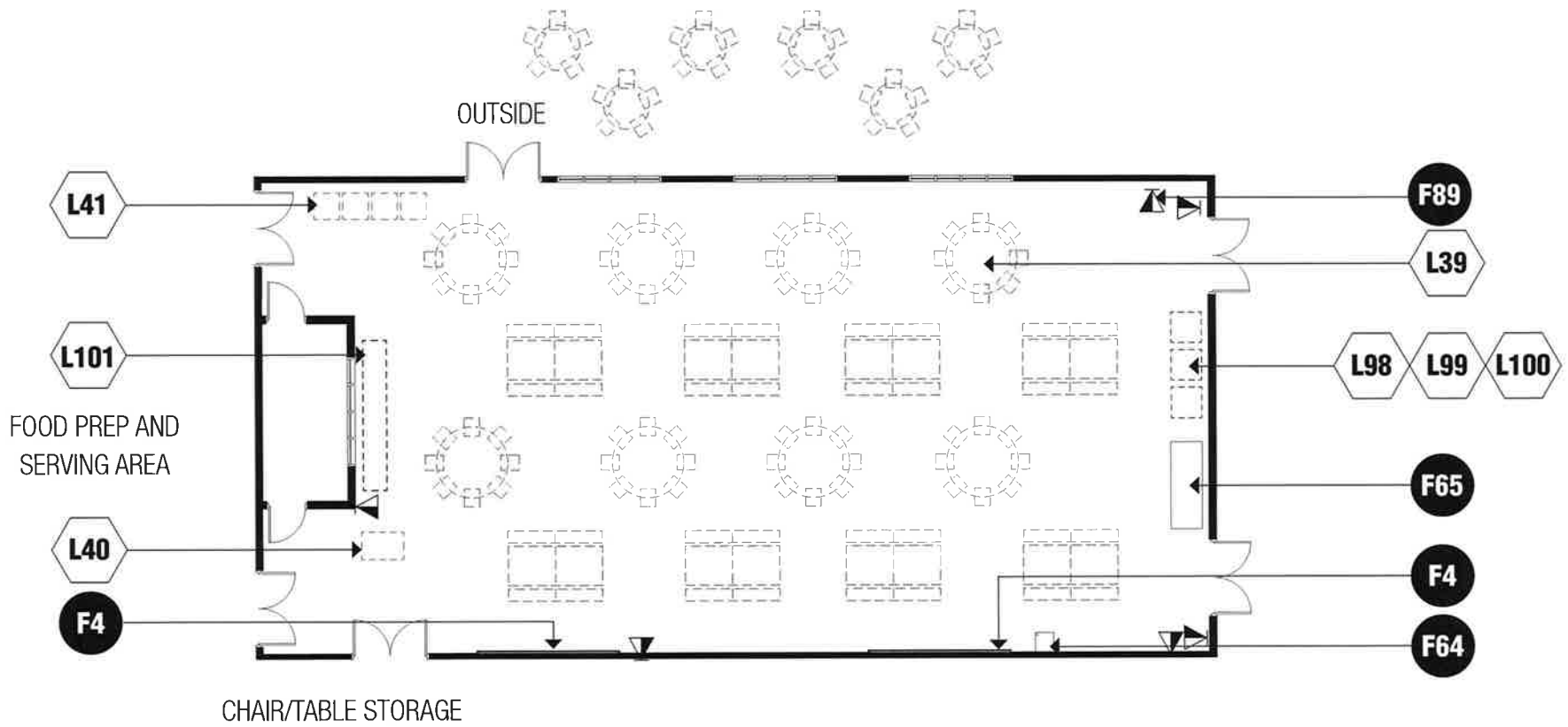
linked space 

enclosed space 

open space 



STUDENT DINING ADJACENCY DIAGRAM



E-SD-1 /// STUDENT DINING AREA

size

2,030-4,375 SF

capacity/users

1/3 of the projected capacity per lunch period

3-6 staff members

members of community (after hours)

ancillary spaces

stage (E-SD-3)

chair/table storage (E-SD-4)

serving area (E-SD-6)

spatial relationships

centrally located to office area,

classrooms, and media center

near parking and entry to building

goals

to provide a pleasant atmosphere for students to eat meals (assume population served over three lunch periods)

to provide a flexible meeting space for groups if needed

activities

student dining

school and community programs

meetings and activities

environmental considerations

uniform and controllable lighting

adequate ventilation

electrical outlets for equipment

environmental sound control

higher than normal ceiling height

electrical outlets for student use

provide sound system

provide large motorized projection screen

with ceiling mounted projector

configure larger spaces to manage sound

and for multiple users

cleanable building surfaces

good sight lines to all areas of the room

for supervision

window treatment to darken room for AV

presentation; this is required if the

stage is located in this area

outlets and data ports for salad bar and

point of sale locations; flush to ground

with cover

LEGEND ///

● **fixed furnishings**

F4 marker board (on two walls - 16 LF each with electric outlet below)

F64 filtered water fountain with bubbler and goose neck bottle filler

F65 recycling center (work with food service staff on location and design)

▶ F89 data drop

◻ **loose furnishings**

L39 cafeteria tables (tables and seating to accommodate 1/3 of school capacity-vary seating options and heights)

L40 point of sale station

L41 chair dollies

L98 recycling bins (cafeteria)

L99 composting bins (cafeteria)

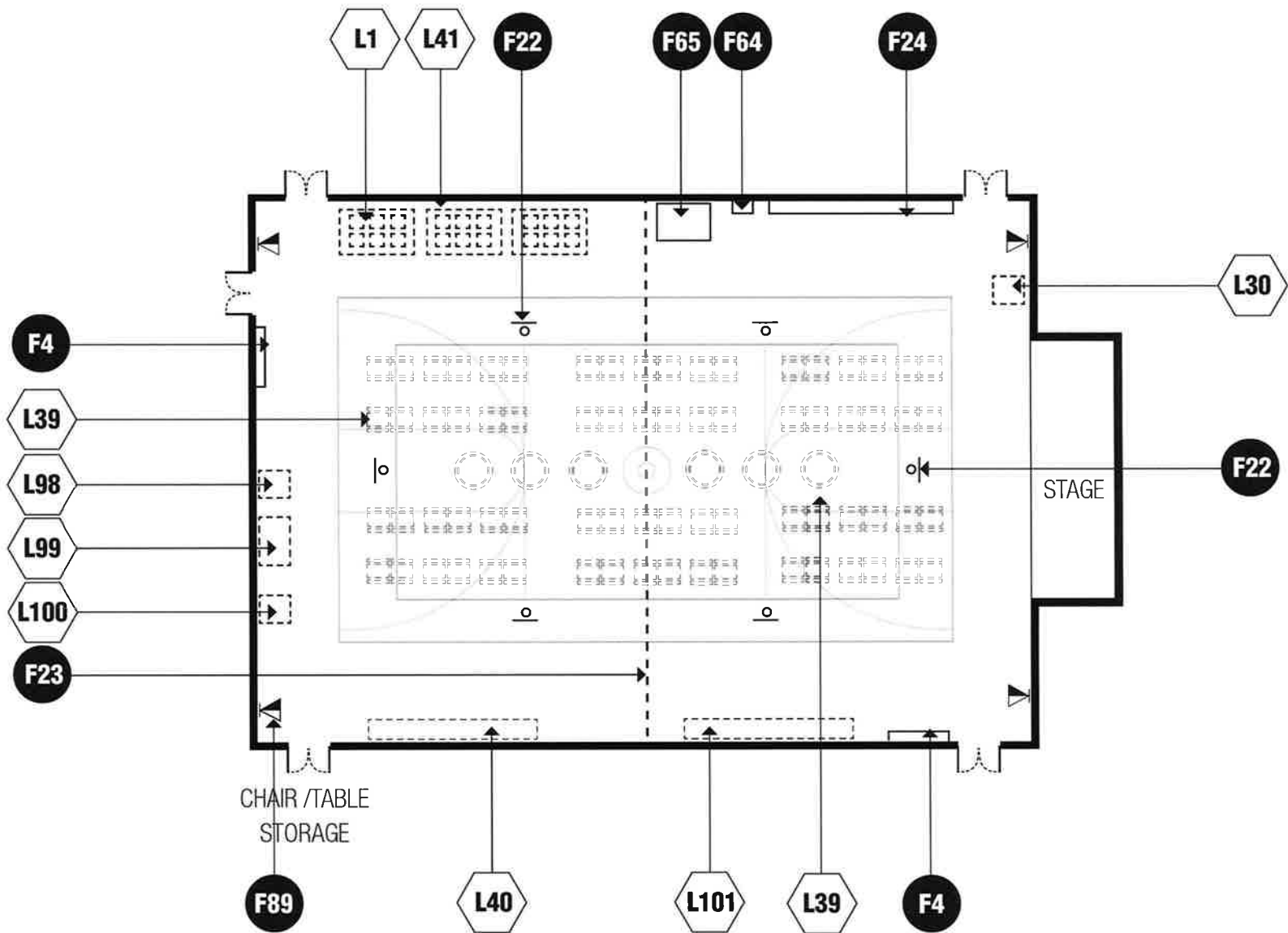
L100 waste bins (cafeteria)

L101 salad bar

■ **AV & IT equipment**

n/a

E-SD-1 /// **STUDENT DINING AREA**



E-SD-2 /// MULTIPURPOSE (OPTIONAL)

capacity/users

cafeteria:

1/3 of the school capacity per lunch period

3-6 staff members

auditorium:

Auditorium for presentation and other large school functions

Parents and community members (after hours)

gymnasium:

20-25 students per class

2-3 teachers

Assemblies to accommodate at least 1/2 of the student body

ancillary spaces

serving area (E-SD-6)

stage (E-SD-3)

chair/table storage (E-SD-4)

office (E-PE-3)

storage (E-PE-4)

spatial relationships

near public restrooms

near visitor parking and entry to building

located with easy access to rest of school,

but must be able to close off area for security during evening activities

goals

to provide space for PE classes to meet

to provide a pleasant atmosphere for students to eat meals (assume population served over three lunch periods)

to provide a flexible meeting space for groups if needed, this space will also serve as the school's gymnasium and auditorium for presentation or other large school functions with a seating capacity of over 350 people

*this space is an alternative to traditional cafeteria and gym spaces where site space is limited and co-location must occur

activities

student dining

school and community programs

meetings and activities

athletic skills and leadership games

adaptive physical education

student assemblies and programs

lectures/teaching

community use

environmental considerations

uniform and controllable lighting

environmental sound control

electrical outlets for equipment

adequate ventilation

higher than normal ceiling height

provide sound system

provide large motorized projection screen with ceiling mounted projector

configure larger spaces to manage sound and for multiple users

cleanable building surfaces

good sight lines to all areas of the room for supervision

window treatment to darken room for

AV presentation, this is required if the stage is located in this area

outlets and data ports for salad bar and point of sale locations; flush to

ground with cover

consider retractable stage as an option as opposed to the fixed stage

LEGEND ///

● **fixed furnishings**

F4 marker board (on two walls, 16 LF minimum each with electrical outlet below)

F22 basketball operable goals (adjustable height, rims, hoops, ceiling hung or portable)

F23 operable partition-motorized

F24 climbing wall

F64 filtered water fountain with bubbler and gooseneck bottle filler

F65 recycling center (work with Food Services staff on location design)

▶ F89 data drop

◻ **loose furnishings**

L1 stackable/nesting chairs

L30 mobile AV cabinet

L39 cafeteria tables (tables and seating to accommodate 1/3 of school capacity - varying seating options and heights)

L40 point of sale station

L41 chair dollies

L98 recycling bins (cafeteria)

L99 composting bins (cafeteria)

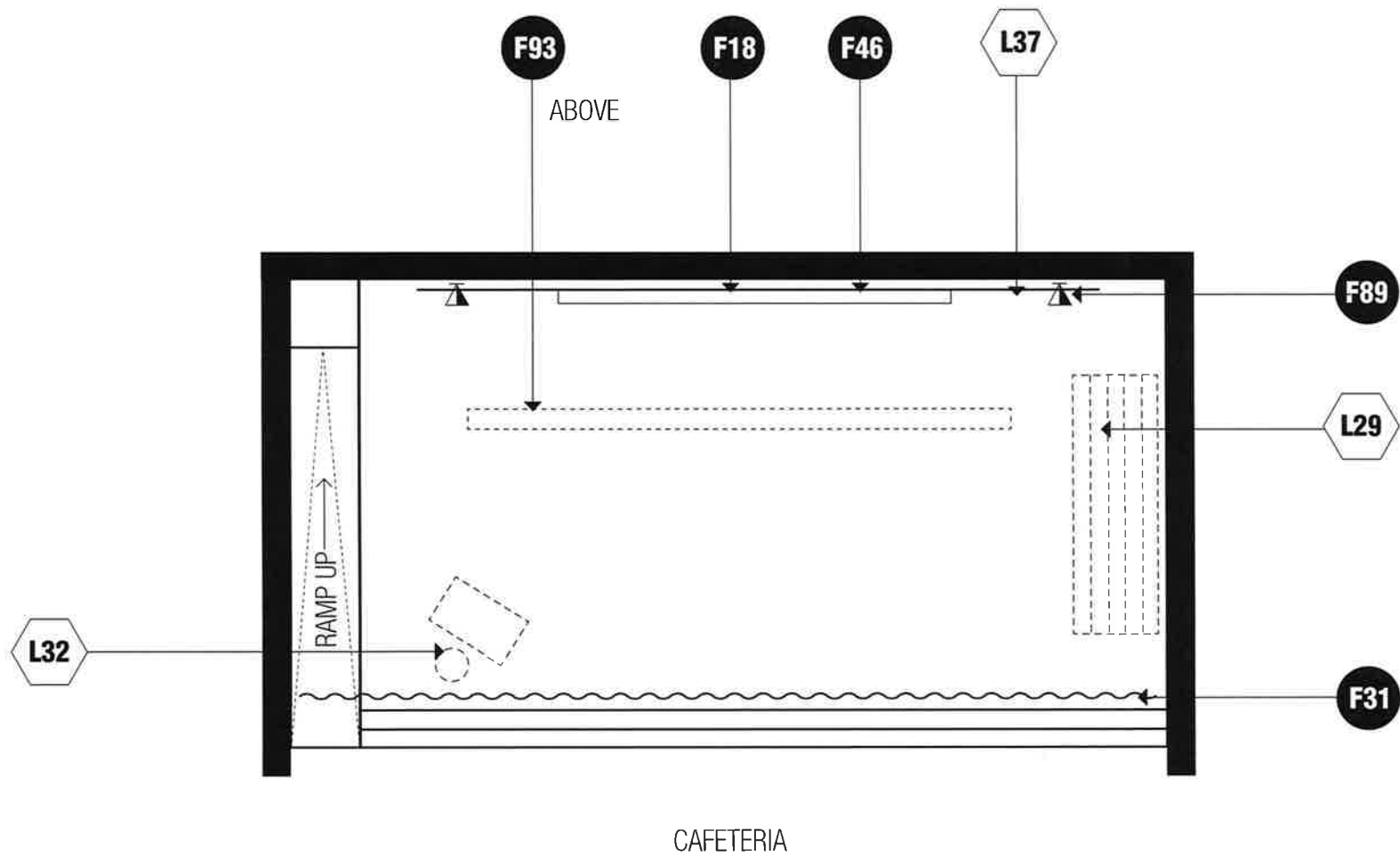
L100 waste bins (cafeteria)

L101 salad bar

■ **AV & IT equipment**

n/a

This Page Intentionally Left Blank



E-SD-3 /// STAGE (OPTIONAL)

capacity/users

20-25 students
teachers
parents / volunteers
community members

ancillary spaces

gymnasium (E-PE-1)
student dining area (E-SD-1)
multipurpose (E-SD-2)(optional)

spatial relationships

near chair/table storage
near music rooms if possible

goals

to provide space for students to present performances

activities

student assembly/award programs
theatrical/musical performances
in-service conferences

environmental considerations

uniform/theatrical lighting
electrical outlets for equipment
stage to be no more than 21" above gymnasium floor
direct, ADA and convenient access to stage via stairs/ramp
fixed construction or "murphy" retractable

fixed furnishings

- F18 mirror
- F31 stage curtains
- F46 motorized projection screen
- F89 data drop
- ▶ F93 theatre and stage equipment (sound and light)

loose furnishings

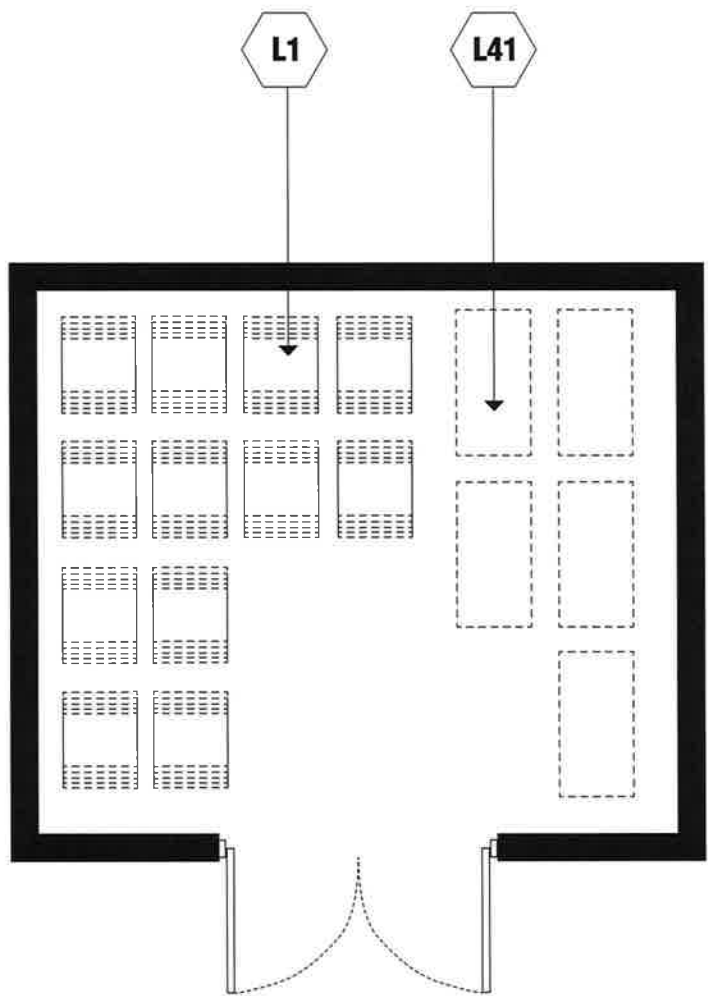
- ◻ L29 choral risers
- L32 conductor's podium and stool
- L37 dance barres

AV & IT equipment

- n/a

LEGEND ///

E-SD-3 /// **STAGE (OPTIONAL)**



E-SD-4 /// CHAIR / TABLE STORAGE

size

150-275 SF

capacity/users

2 people

ancillary spaces

student dining area (E-SD-1)
multipurpose (E-SD-2)(optional)

spatial relationships

may provide back of stage access

goals

to provide convenient storage of dining
chairs and tables to be used for
meetings and performances

activities

storage

environmental considerations

uniform lighting
cleanable and resilient building surfaces
accessibility for moving furniture in and
out

LEGEND ///

● **fixed furnishings**

n/a

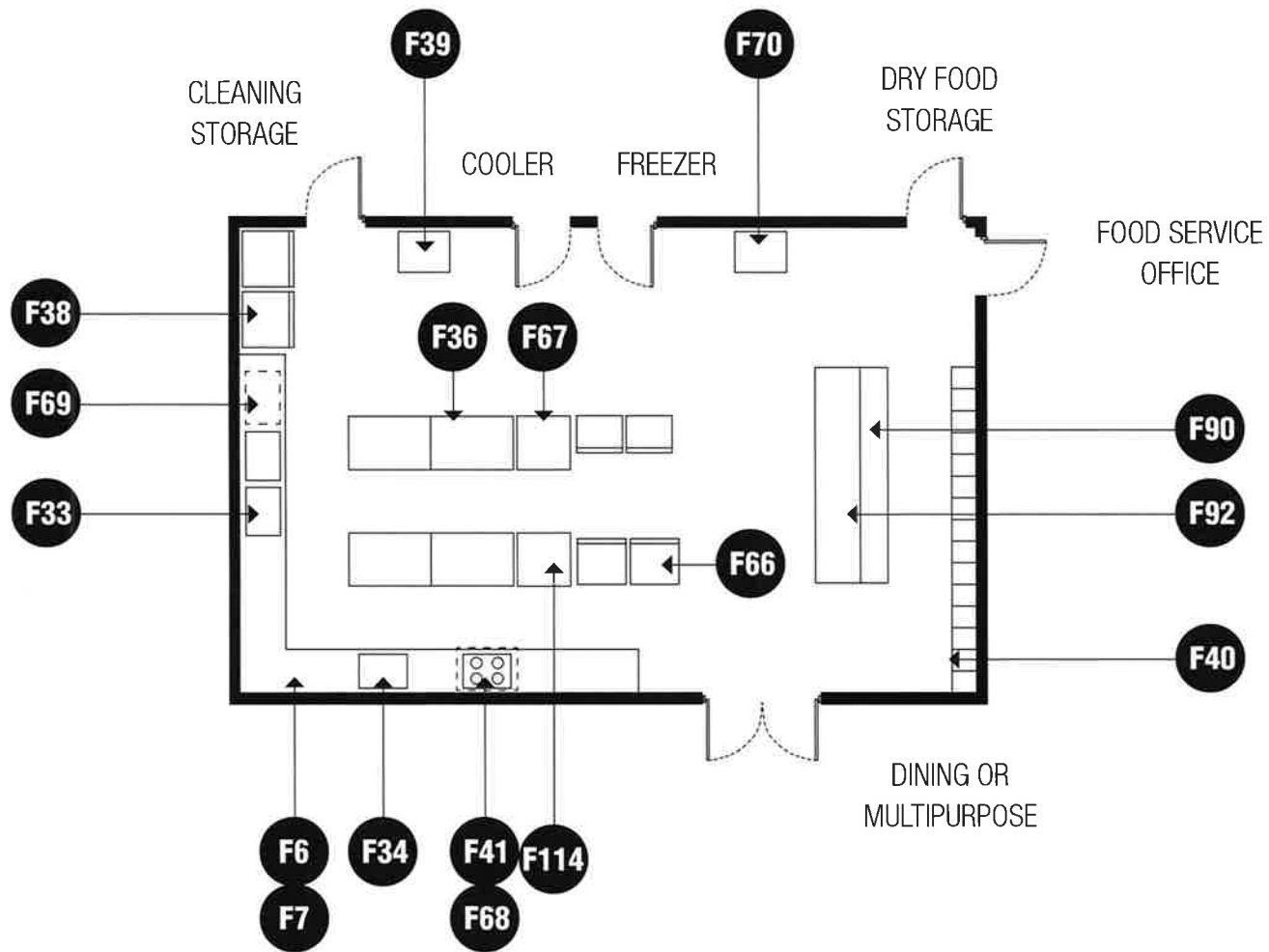
⬡ **loose furnishings**

L1 stackable/nesting chair (stacked)

L41 chair dollies

■ **AV & IT equipment**

n/a



E-SD-5 /// KITCHEN / FOOD PREPARATION

size

650 SF

capacity/users

15-25 people

ancillary spaces

student dining area (E-SD-1)

multipurpose (E-SD-2)(optional)

spatial relationships

near loading dock to permit truck access
to docking and storage areas (site
specific)

adjacent and access to student dining
area/multipurpose

near dumpsters

cafeteria serving arrangement

goals

to prepare student meals

activities

preparation of student meals

environmental considerations

uniform lighting

durable seamless flooring

proper ventilation of space to remove
cooking odors

cleanable building surfaces

electrical/plumbing/mechanical

connection for food service equipment

appropriate drainage

LEGEND ///

● **fixed furnishings**

F6 soap dispenser

F7 towel dispenser

F33 pot washing sinks

F34 food preparation sink

F36 work tables

F38 refrigeration/reach-ins

F39 mop sink

F40 chemical storage

F41 exhaust hood system

F66 oven

F67 convection steamer

F68 range

F69 ware washing machine

F70 mop rack

F90 storage shelving 12" deep

F92 storage shelving 18" deep

F114 warming cabinet

*confirm required furnishings with DCPS
Food Services and Department of Health

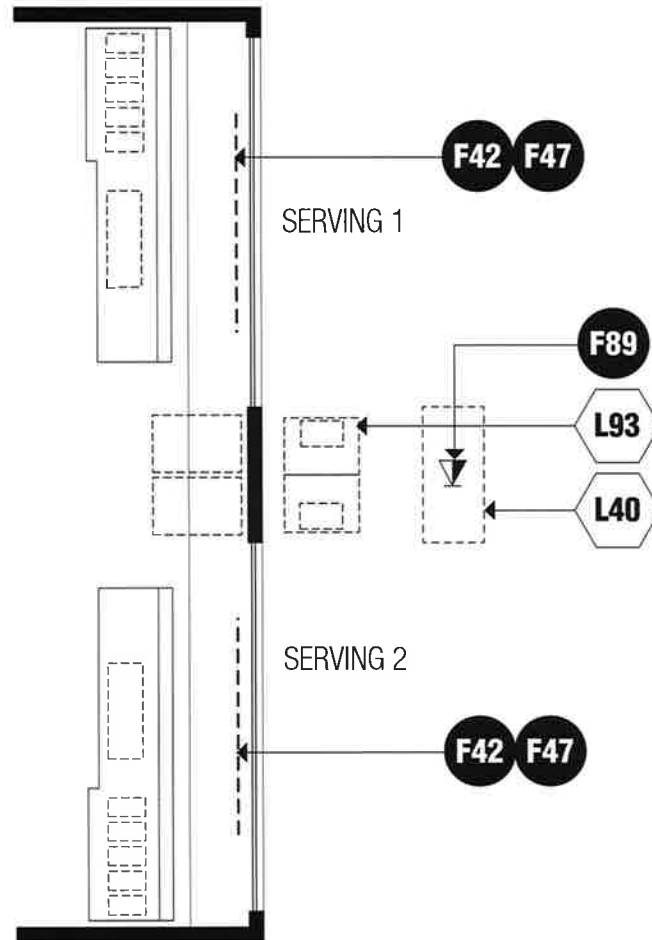
◻ **loose furnishings**

n/a

*confirm required furnishings with DCPS
Food Services and Department of Health

■ **AV & IT equipment**

n/a



E-SD-6 /// SERVING AREA

size

275-400 SF

capacity/users

6-8 people

ancillary spaces

student dining area (E-SD-1)

multipurpose (E-SD-2)(optional)

kitchen/food preparation (E-SD-5)

spatial relationships

beginning of serving line should be near entry door of students dining area/multipurpose

goals

to provide serving station for those seeking meals or snacks

activities

serving food

environmental considerations

uniform and controllable lighting

cleanable building surfaces

electrical connections for food service equipment

adequate ventilation

LEGEND ///

● fixed furnishings

F42 drop-in individual controlled heated electric food wells and full service sneeze guard (student height) with over shelf

F47 drop-in self contained refrigerator cold pan for side items (counter and sneeze guards are lower than normal for better viewing and service to elementary students)

▶ F89 data drop

*confirm required furnishings with DCPS Food Services and Department of Health

⬡ loose furnishings

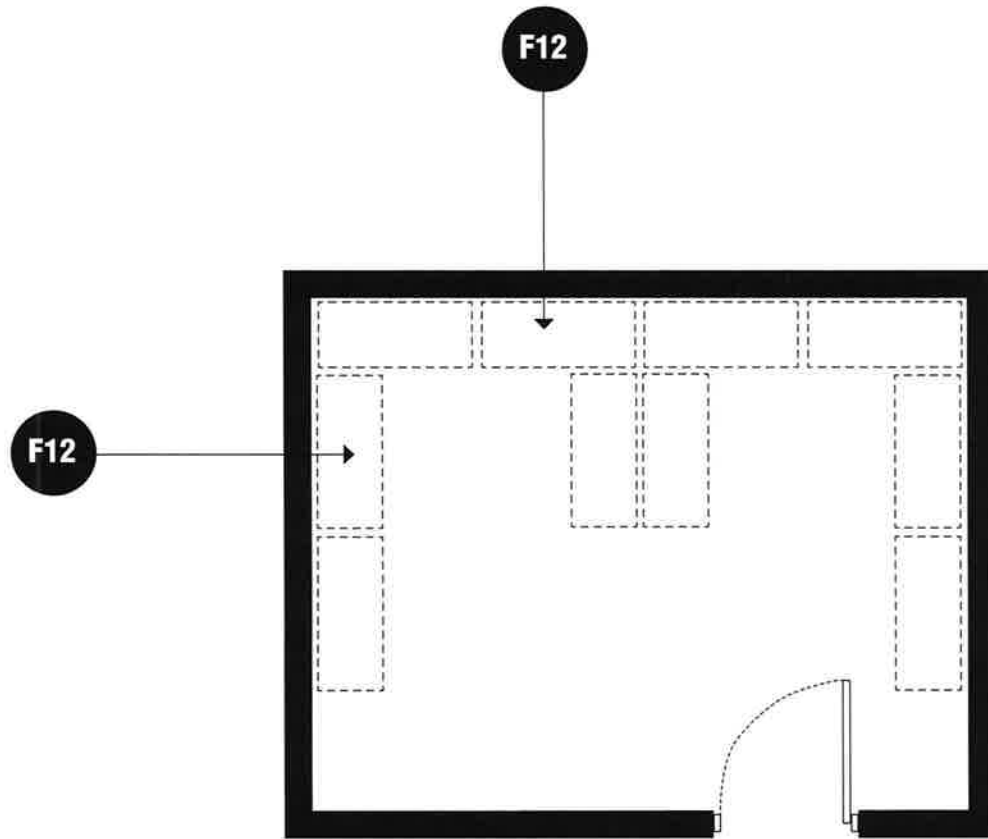
L40 point of sale station

L93 milk coolers

*confirm required furnishings with DCPS Food Services and Department of Health

■ AV & IT equipment

n/a



E-SD-7 /// DRY FOOD STORAGE

size

250-350 SF

capacity/users

2 people

ancillary spaces

n/a

spatial relationships

near supply storage/receiving
adjacent and access to food prep area

goals

to provide an area for food storage

activities

storage

environmental considerations

uniform lighting
cleanable building surfaces
adequate ventilation

LEGEND ///

● **fixed furnishings**

F12 rust resistant shelving and dunnage
racks (24" deep)

*confirm required furnishings with DCPS
Food Services and Department of Health

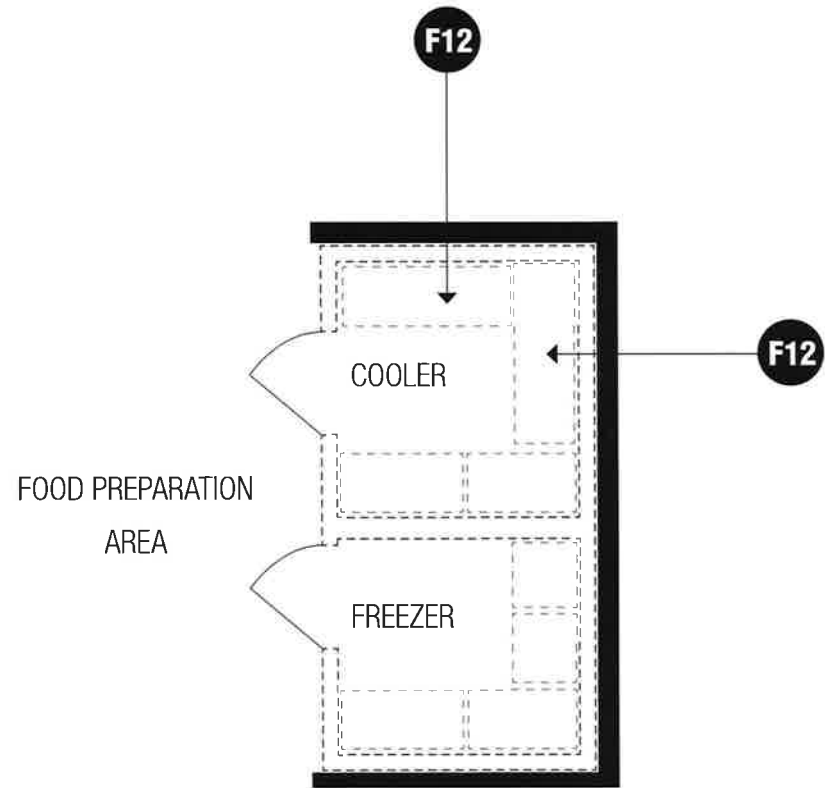
◻ **loose furnishings**

n/a

*confirm required furnishings with DCPS
Food Services and Department of Health

■ **AV & IT equipment**

n/a



E-SD-8 /// FREEZER / COOLER

size

250 SF

*confirm required SF with DCPS Food

Services

capacity/users

2 people

ancillary spaces

n/a

spatial relationships

adjacent and access to food preparation area

near the supply storage/receiving

goals

to provide space for manufactured freezer and refrigerator units to store food for short periods of time

activities

cold food storage

environmental considerations

uniform lighting

ventilation for refrigeration machinery equipment

cleanable building surfaces

floor to be flush with adjacent kitchen floor

electrical service for refrigeration equipment

● LEGEND ///

fixed furnishings

F12 rust resistant shelving and dunnage racks (24" deep)

*confirm required furnishings with DCPS Food Services and Department of Health



loose furnishings

n/a

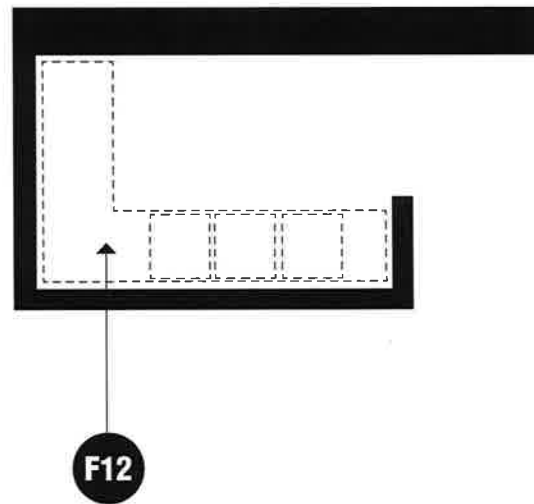
*confirm required furnishings with DCPS Food Services and Department of Health



AV & IT equipment

n/a

STUDENT DINING OR
MULTIPURPOSE



NOTE //

This is an example of a ware washing area. Food service equipment will vary from school to school; confirm requirements with DCPS Office of Food and Nutrition Services.

E-SD-9 /// WARE WASHING

size

100-200 SF

capacity/users

1 person

ancillary spaces

kitchen/food preparation (E-SD-5)

spatial relationships

adjacent and access to food preparation area

near the supply storage/receiving

goals

to clean food service equipment

activities

space and equipment to scrape, wash, dry, and store food service equipment

environmental considerations

uniform lighting

ventilation to remove steam and condensation

cleanable building surfaces

floor to be flush with adjacent kitchen floor

electrical service for refrigeration equipment

LEGEND ///

● **fixed furnishings**

F12 rust resistant shelving and dunnage racks (24" deep)

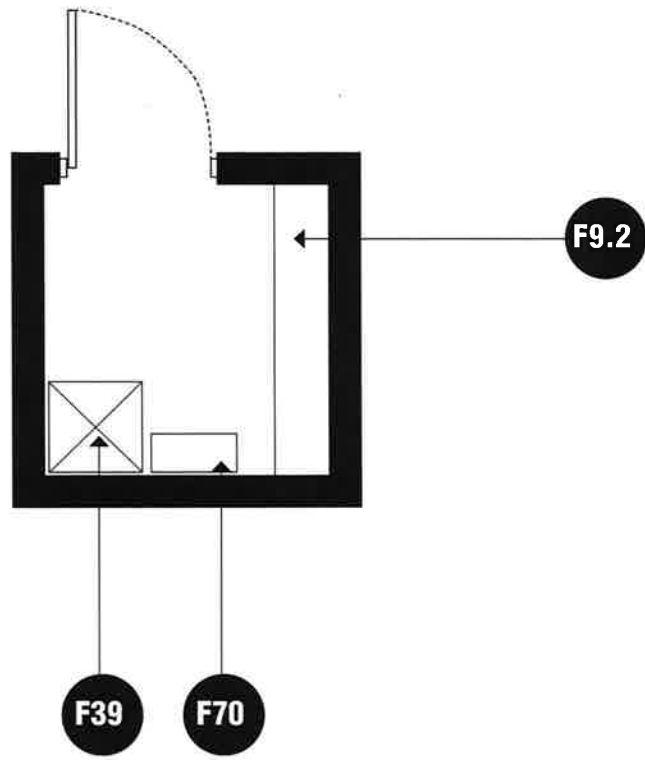
◻ **loose furnishings**

n/a

*confirm required furnishings with DCPS Food Services and Department of Health

■ **AV & IT equipment**

n/a



E-SD-10 /// CLEANING STORAGE

size

50-60 SF

capacity/users

1 person

ancillary spaces

kitchen/food preparation (E-SD-5)

spatial relationships

near the supply storage/receiving

goals

to store chemicals used in cleaning and
maintaining kitchen

activities

storing chemicals and equipment

environmental considerations

uniform lighting
cleanable building surfaces
sensors for spilled chemicals
adequate exhaust/ventilation

LEGEND ///

● **fixed furnishings**

F9.2 rust resistant shelving

F39 mop sink

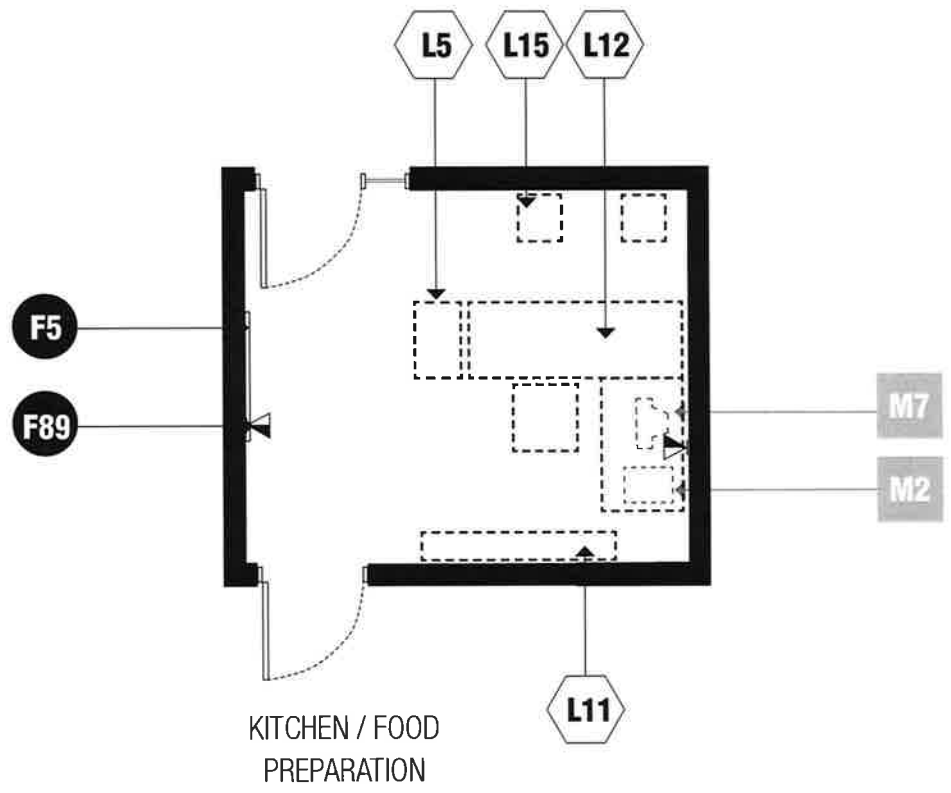
F70 mop rack

◻ **loose furnishings**

N/A

■ **AV & IT equipment**

n/a



E-SD-11 /// FOOD SERVICE OFFICE

size

150 SF

capacity/users

2-3 people

ancillary spaces

kitchen/food preparation (E-SD-5)

spatial relationships

adjacent and access to kitchen

goals

to provide an area to keep records and
conduct business

activities

scheduling

staff evaluations/discipline/meetings

environmental considerations

uniform lighting

environmental sound control

electrical outlets for equipment

view of the kitchen

LEGEND ///

● fixed furnishings

F5 tackable/magnetic wall surface

▶ F89 data drop

○ loose furnishings

L5 four drawer lateral file cabinet (lockable)

L11 adjustable height bookshelves

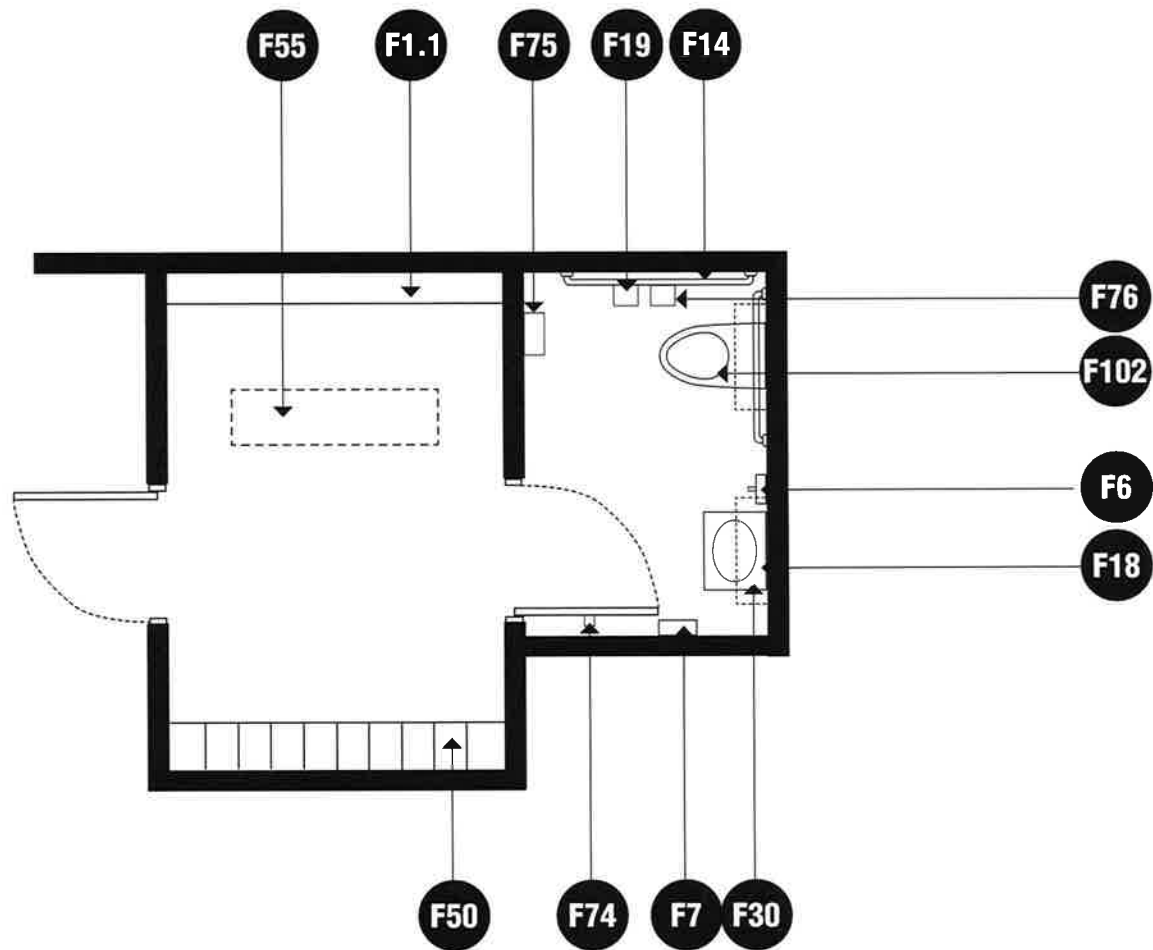
L12 admin workstation and chair

L15 task chair (2)

■ AV & IT equipment

M2 color printer

M7 desktop printer



E-SD-12 /// TOILET / LOCKERS

size

150 SF

capacity/users

3-4 people

ancillary spaces

n/a

spatial relationships

located near kitchen/food preparation and food

service office

goals

to provide adequate space to kitchen staff and their health needs

activities

personal and health needs for the kitchen staff

changing clothing

environmental considerations

uniform lighting

environmental sound control

moisture- and stain-resistant finishes

adequate exhaust/ventilation

LEGEND ///

● **fixed furnishings**

F1.1 casework (wall cabinets)

F6 soap dispenser

F7 towel dispenser

F14 36" and 42" grab bars

F18 mirror

F19 toilet tissue holder

F30 bathroom sink

F50 lockers

F55 locker bench

F74 coat hook-bathroom accessory

F75 sanitary napkin dispenser

F76 sanitary napkin disposal

F102 toilet

F115 hand dryer

*confirm required furnishings with DCPS

Food Services and Department of Health

◻ **loose furnishings**

n/a

*confirm required furnishings with DCPS

Food Services and Department of Health

■ **AV & IT equipment**

n/a

E-BS /// **BUILDING SUPPORT**

SUPPLY STORAGE

TOILET / SHOWER / LOCKER ROOM

CUSTODIAL / DGS OFFICE

LARGE GROUP RESTROOMS

CUSTODIAL CLOSET

ELECTRICAL CLOSET

TELECOMMUNICATIONS ROOM

CORRIDORS

MECHANICAL / ELECTRICAL SPACE / DECKS

CUSTODIAL EQUIPMENT STORAGE

CENTRAL STORAGE AREA

RECEIVING AREA

STAFF RESTROOM

FAMILY RESTROOM

TECHNOLOGY STORAGE

LAUNDRY ROOM





SPACE	325 STUDENTS			400 STUDENTS			500 STUDENTS			700 STUDENTS		
	QTY	SF	TOTAL	QTY	SF	TOTAL	QTY	SF	TOTAL	QTY	SF	TOTAL
BUILDING SUPPORT												
Supply Storage	1	150	150	1	150	150	1	150	150	1	150	150
Toilet/Shower/Locker Room	1	150	150	1	150	150	1	150	150	1	150	150
Custodial/DGS Office	2	150	300	2	150	300	2	150	300	2	150	300
Large Group Restrooms*	--	--	--	--	--	--	--	--	--	--	--	--
Custodial Closet	7	25	175	7	25	175	9	25	225	11	25	275
Electrical Closet*	--	--	--	--	--	--	--	--	--	--	--	--
Telecommunications Room*	--	--	--	--	--	--	--	--	--	--	--	--
Corridors*	--	--	--	--	--	--	--	--	--	--	--	--
Mechanical/Electrical Space/Decks*	--	--	--	--	--	--	--	--	--	--	--	--
Custodial Equipment Storage	1	300	300	1	300	300	1	300	300	1	300	300
Central Storage Area	1	325	325	1	400	400	1	500	500	1	700	700
Receiving Area	1	150	150	1	150	150	1	150	150	1	150	150
Staff Restroom*	--	65	--	--	65	--	--	65	--	--	65	--
Family Restroom*	--	65	--	--	65	--	--	65	--	--	65	--
Technology Storage*	--	--	--	--	--	--	--	--	--	--	--	--
Laundry Room	1	80	80	1	80	80	1	80	80	1	80	80
TOTAL			1,630			1,705			1,855			2,105

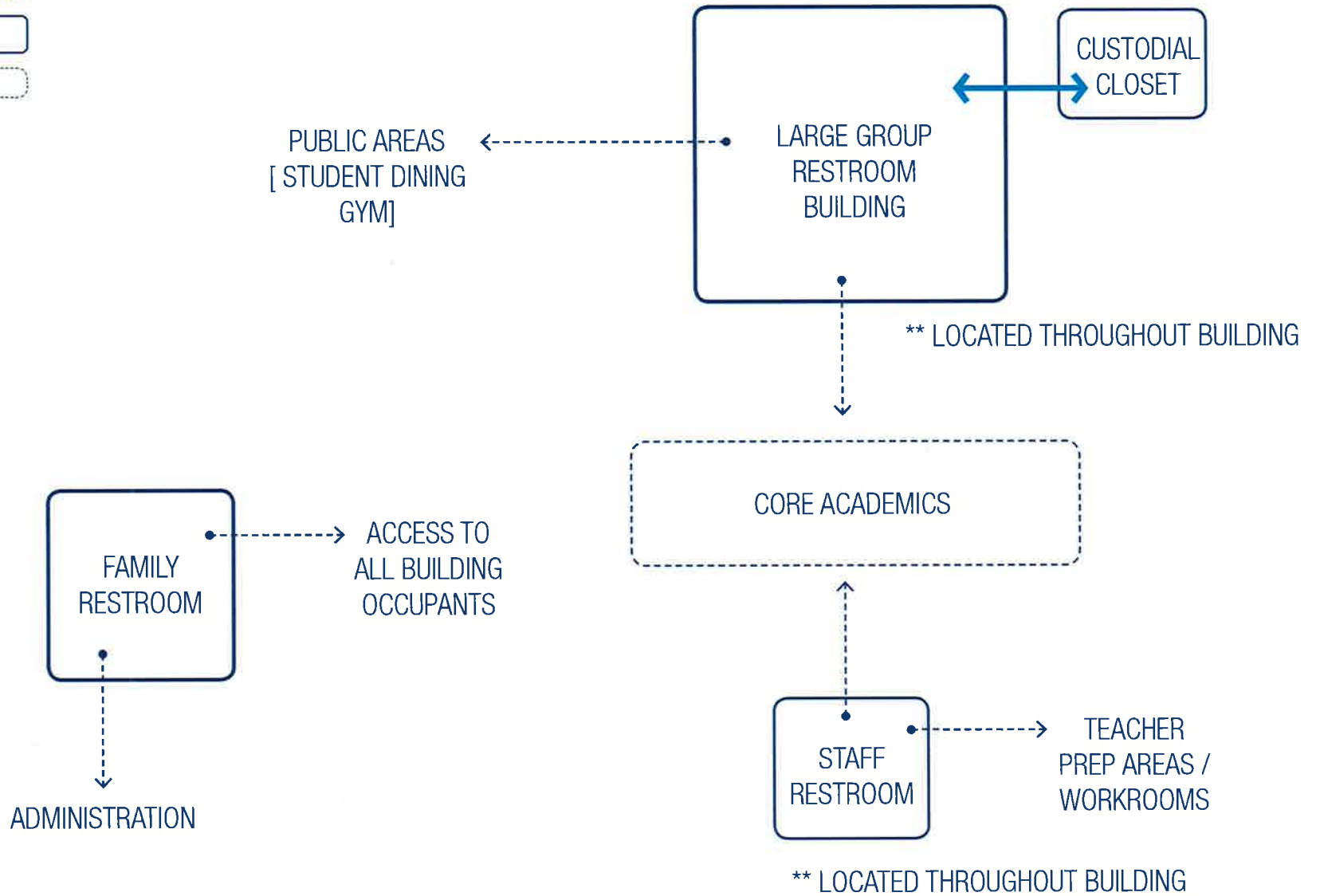
Comments //

*The size and quantity of these spaces to be determined during site specific Ed Spec and design, included as part of Gross Up in prototype.

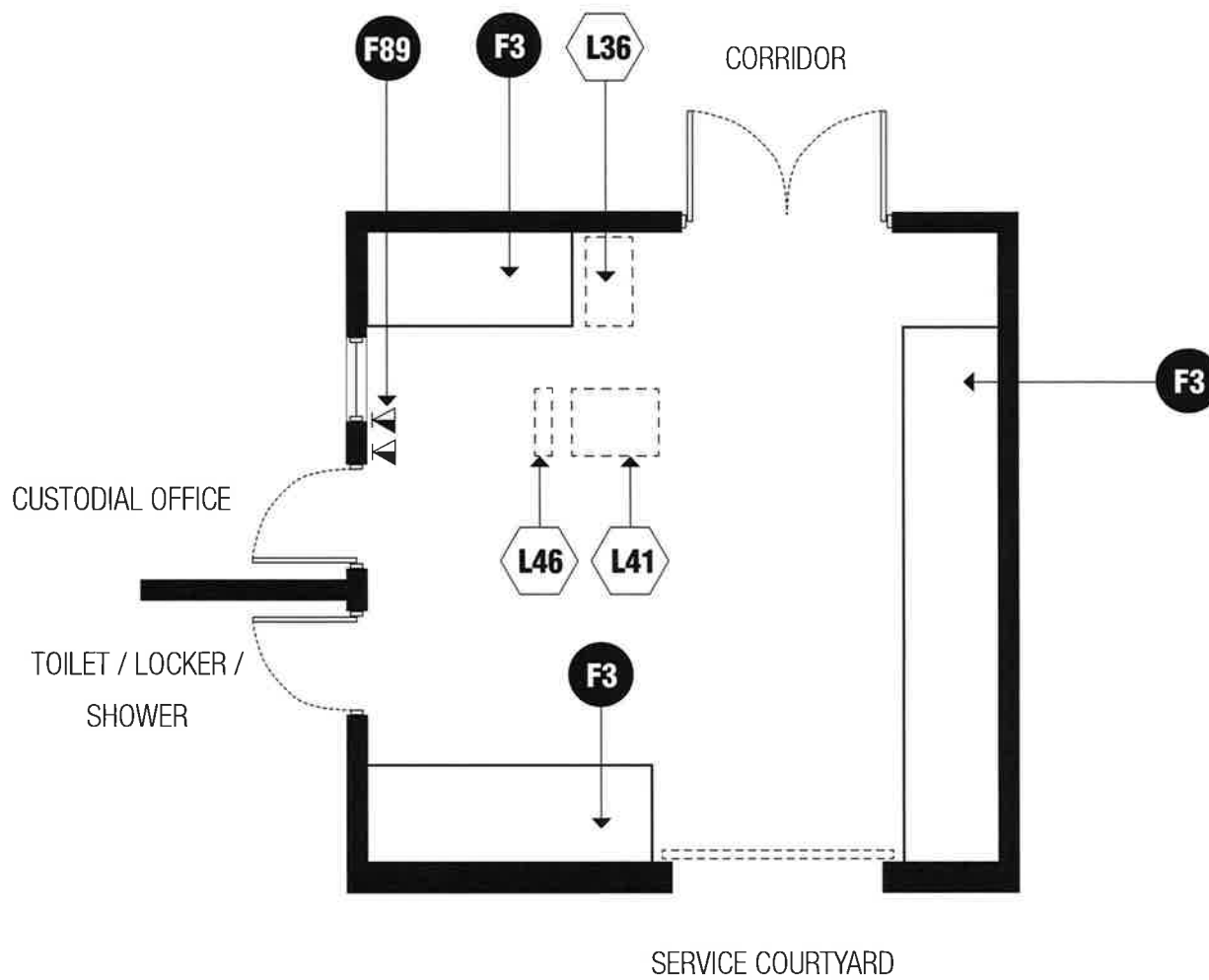
Note: In this document, staff assumptions were made to ensure staff spaces were approximately correct at each capacity model. Specific square footage requirements and quantity of spaces will be completed during the site specific ed spec process. Assumptions for the capacity model are: 325 students : 51 staff; 400 students : 57 staff; 500 students : 66 staff; 700 students: 81 staff.

KEY ///

- direct access 
- linked space 
- enclosed space 
- open space 



BUILDING SUPPORT ADJACENCY DIAGRAM



E-BS-1 /// SUPPLY STORAGE

size

150 SF

capacity/users

2-4 people

ancillary spaces

n/a

spatial relationships

adjacent and access to loading dock area
and service courtyard

access to corridor

adjacent and access to custodial office

adjacent and access to toilet/shower/
locker room

goals

to store supplies and receive supplies

activities

storage

environmental considerations

supplement heating source

double door with removable mullions

overhead door to service courtyard

LEGEND ///

● **fixed furnishings**

F3 wall shelving (84" high x 36" deep)

▶ F89 data drop

○ **loose furnishings**

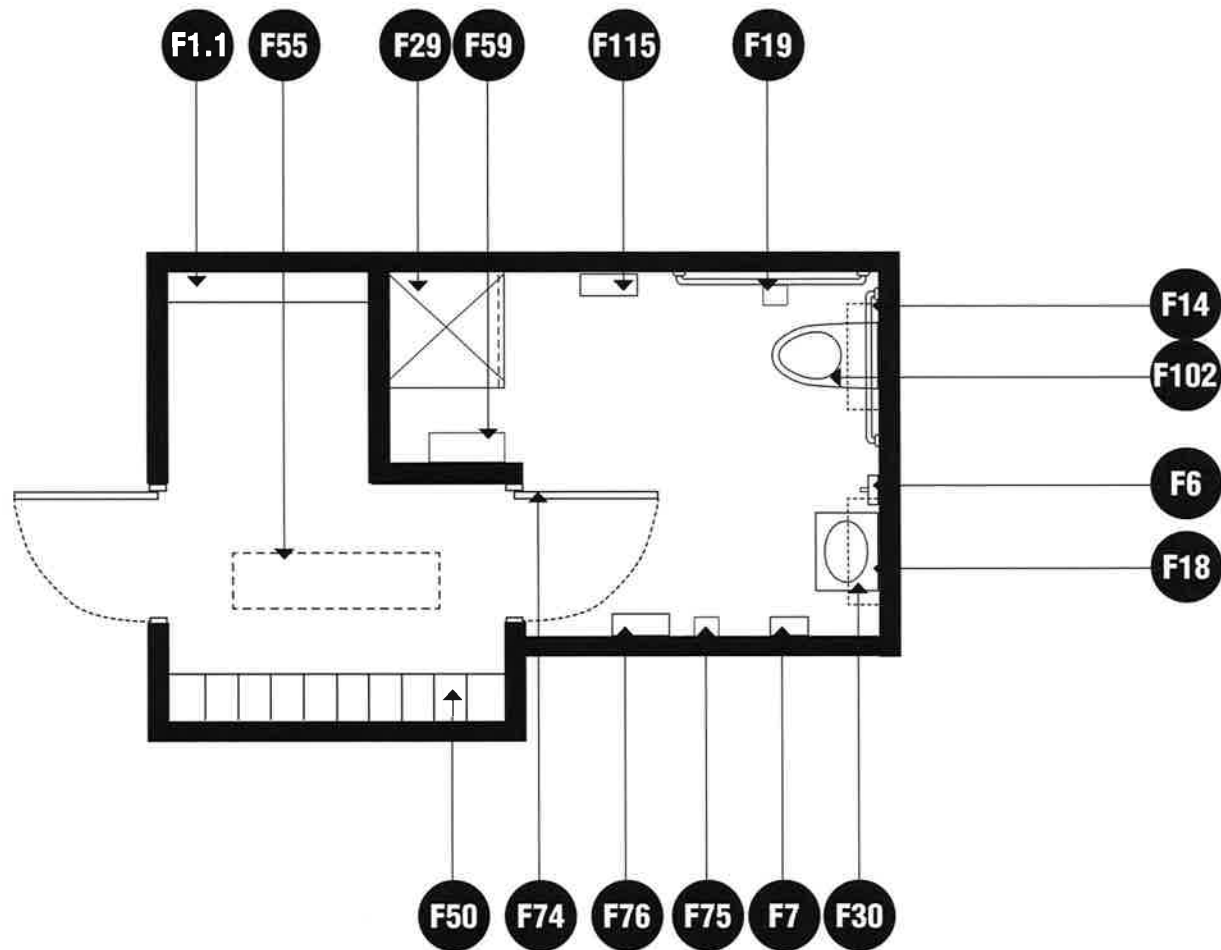
L36 flammables storage

L41 chair dollies

L46 step ladder

■ **AV & IT equipment**

n/a



E-BS-2 /// TOILET / SHOWER / LOCKER ROOM

size

150 SF

capacity/users

1-2 people

ancillary spaces

n/a

spatial relationships

located near custodial area

goals

to provide adequate space to custodial staff and their health needs

activities

personal and health needs for the custodial staff
changing clothing

environmental considerations

uniform lighting
environmental sound control
moisture- and stain-resistant finishes
adequate exhaust/ventilation

LEGEND ///

● **fixed furnishings**

F1.1 casework (wall cabinets)

F6 soap dispenser

F7 towel dispenser

F14 36" and 42" grab bars

F18 mirror

F19 toilet tissue holder

F29 ADA shower accessories

F30 bathroom sink

F50 lockers

F55 locker bench

F59 changing table

F74 coat hook-bathroom accessory

F75 sanitary napkin dispenser

F76 sanitary napkin disposal

F102 toilet

F115 hand dryer

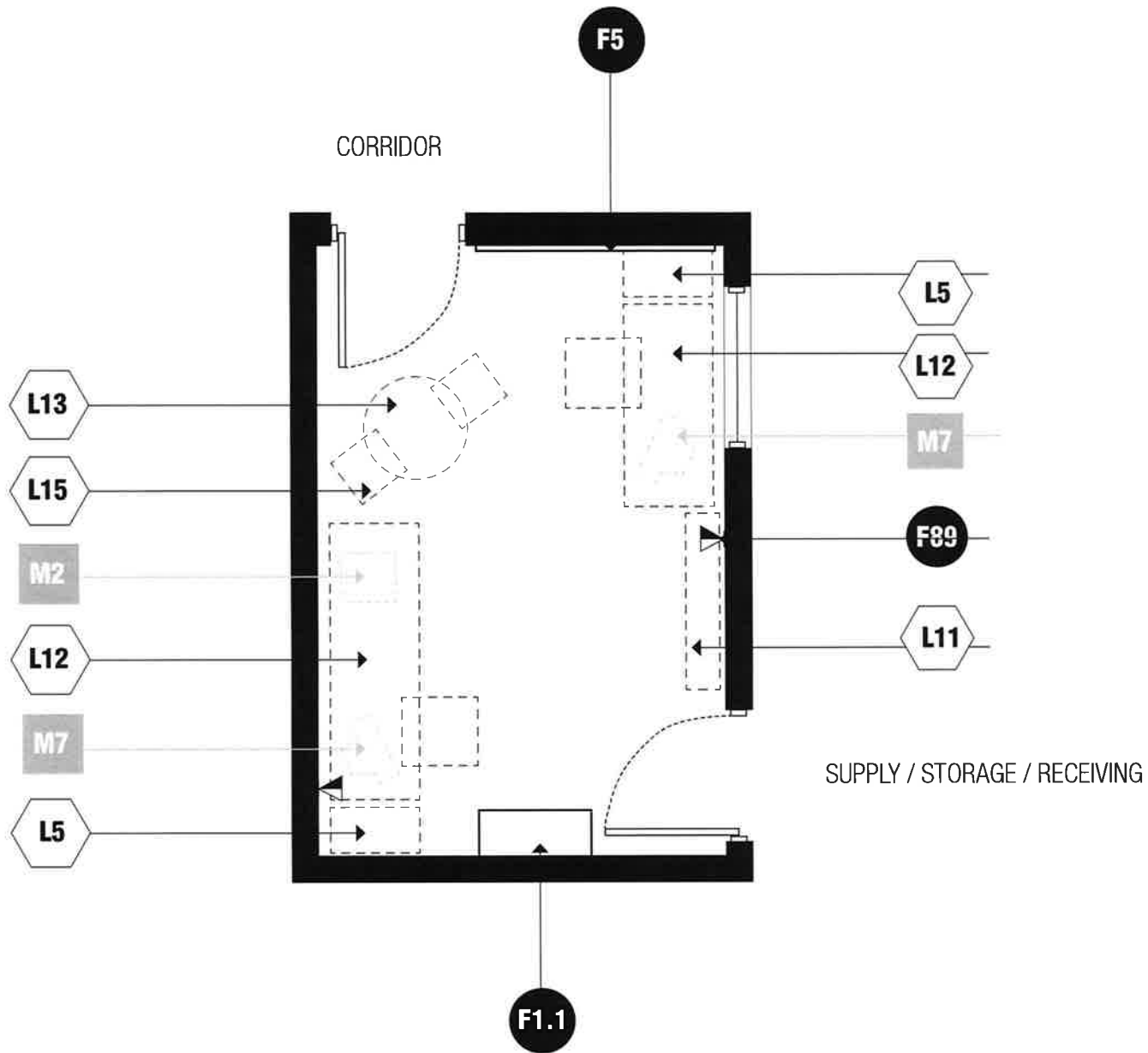
◻ **loose furnishings**

n/a

■ **AV & IT equipment**

n/a

E-BS-2 /// TOILET / SHOWER / LOCKER ROOM



E-BS-3 /// CUSTODIAL / DGS OFFICE

size

150 SF

capacity/users

2-3 people

ancillary spaces

n/a

spatial relationships

adjacent and access to supply storage/
receiving

access to corridor

near custodial toilet

goals

to provide an area to keep records and
conduct business

activities

conferences with staff and other visitors
telephone calls

environmental considerations

uniform lighting

environmental sound control

electrical outlets for equipment

view of the kitchen

LEGEND ///

● **fixed furnishings**

F1.1 casework (8LF)

F5 tackable/magnetic wall surface (6 LF min.)

▶ F89 data drop

◻ **loose furnishings**

L5 four drawer lateral file cabinet (2)

L11 adjustable height bookshelves (12 LF)

L12 admin workstation and chair (2)

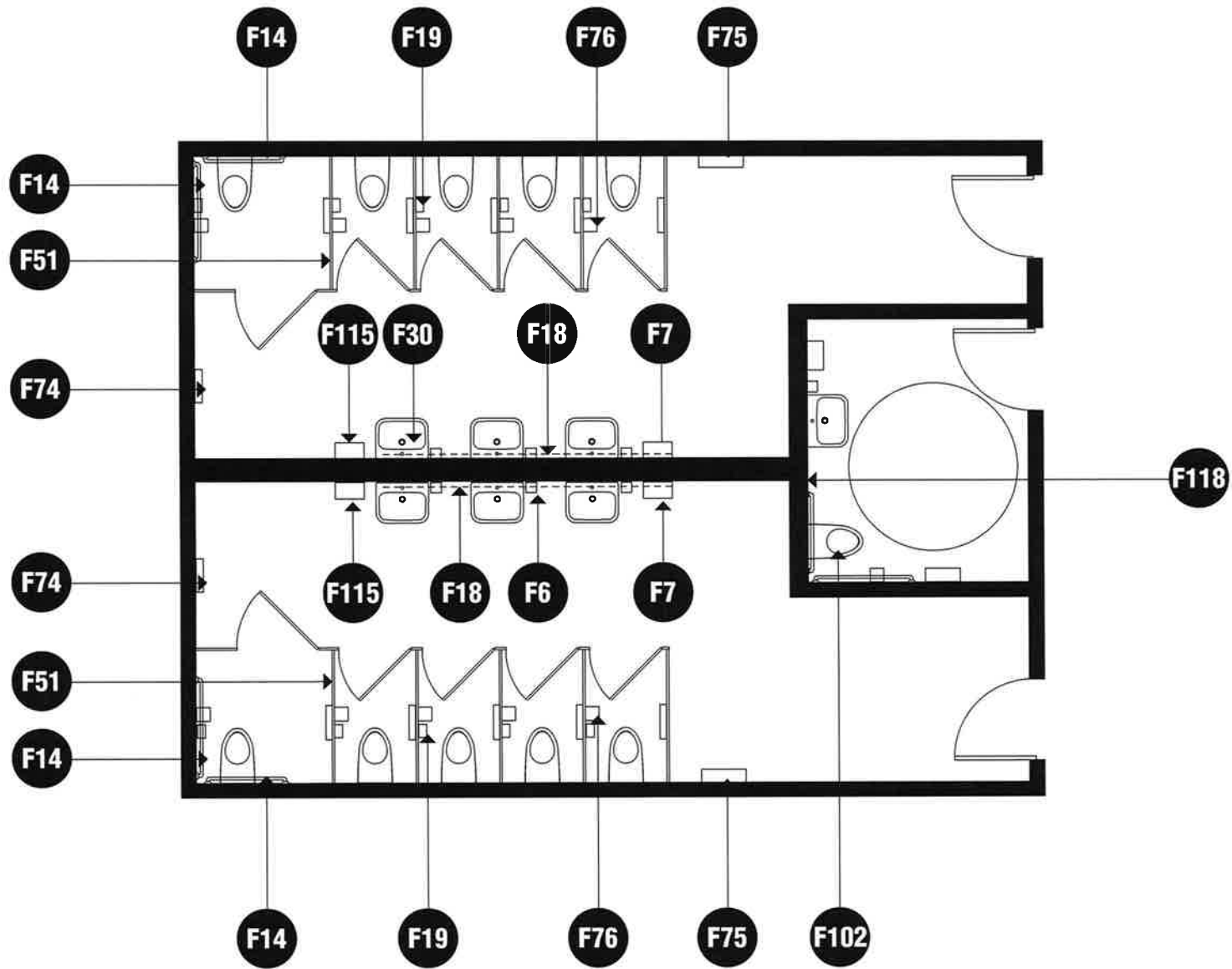
L13 small table

L15 task chair (2)

■ **AV & IT equipment**

M2 color printer

M7 desktop computer



E-BS-4 /// LARGE GROUP RESTROOM

capacity/users

students

ancillary spaces

n/a

spatial relationships

near student dining area

near public use areas, such as media

center and gymnasium

near academic core areas throughout the building

goals

provide a restroom to students

activities

personal and health needs for the students

environmental considerations

uniform lighting

environmental sound control

moisture- and stain-resistant finishes

adequate exhaust/ventilation

LEGEND ///

● fixed furnishings

F6 soap dispenser

F7 towel dispenser

F14 36" and 42" grab bars

F18 mirror

F19 toilet tissue holder

F30 bathroom sink

F51 toilet partitions

F74 coat hook - bathroom accessory

F75 sanitary napkin dispenser (in every stall)

F102 toilet

F115 hand dryer

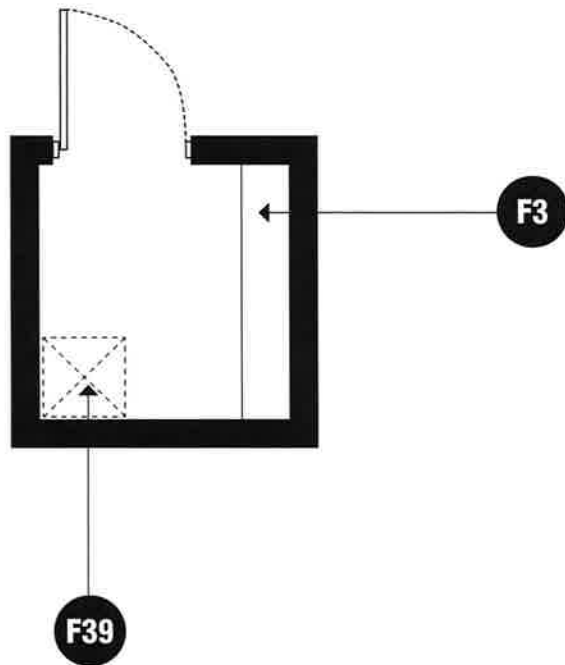
◻ loose furnishings

n/a

■ AV & IT equipment

n/a

E-BS-4 /// LARGE GROUP RESTROOM



E-BS-5 /// CUSTODIAL CLOSET

size

25 SF

capacity/users

1 person

ancillary spaces

n/a

spatial relationships

near large group restrooms

goals

to provide storage for custodial supplies

activities

storage for custodial supplies throughout the building

environmental considerations

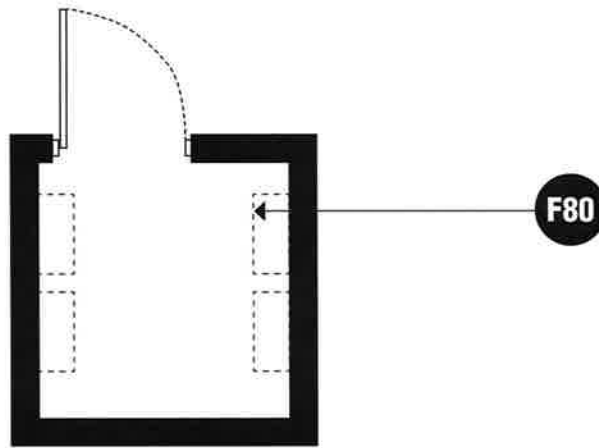
uniform lighting
environmental sound control
electrical outlets for equipment
adequate drainage

LEGEND ///

- **fixed furnishings**
F3 wall shelving
F39 mop sink with hose

- ◻ **loose furnishings**
n/a

- **AV & IT equipment**
n/a



E-BS-6 /// ELECTRICAL CLOSET

capacity/users

1 person

ancillary spaces

N/A

spatial relationships

dispersed throughout the academic core areas

goals

provide a safe space for electrical wiring and panels

activities

Space for electrical wiring and panels

environmental considerations

uniform lighting
environmental sound control
electrical outlets for equipment

LEGEND ///

● **fixed furnishings**

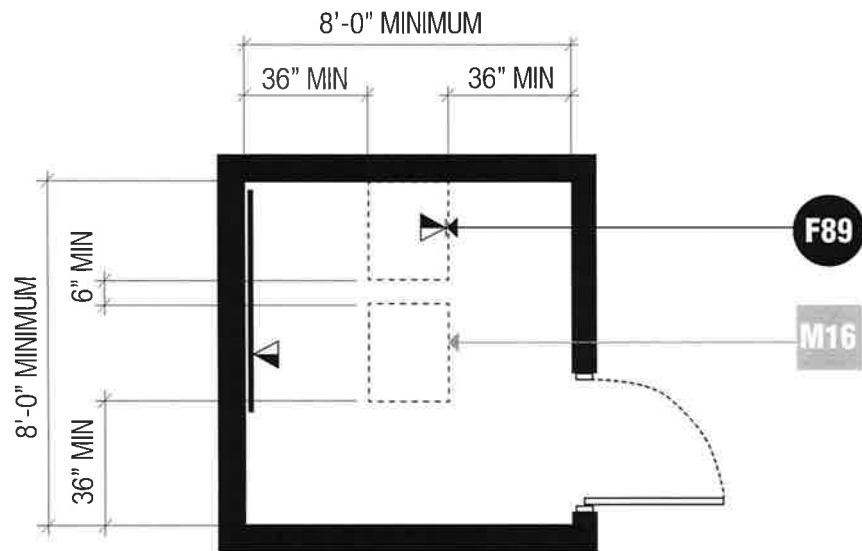
F80 electrical panel

⬡ **loose furnishings**

n/a

■ **AV & IT equipment**

n/a



E-BS-7 /// TELECOMMUNICATIONS ROOM

capacity/users

1 person

ancillary spaces

n/a

spatial relationships

n/a

goals

space for technology needs*

*Reference latest OCTO standards to determine SF

activities

storage

environmental considerations

uniform lighting

environmental sound control

electrical outlets for equipment

LEGEND ///

● **fixed furnishings**

▶ F89 data drop

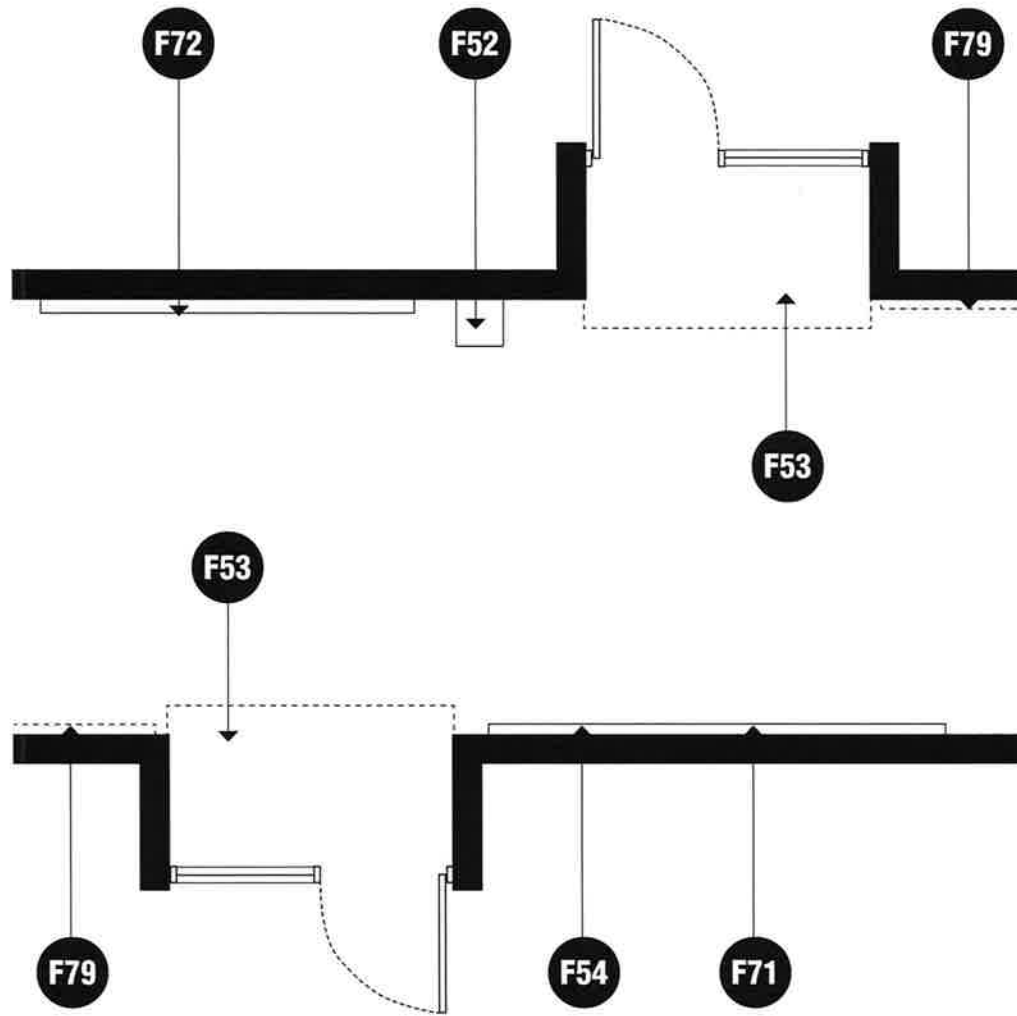
⬡ **loose furnishings**

n/a

■ **AV & IT equipment**

M16 telecommunications rack (6" organizers
between all racks)

*reference OCTO standards



E-BS-8 /// CORRIDORS

environmental considerations

- corridors shall be a minimum of 8 feet wide; some areas of natural light is desirable; the designer should minimize long corridors lined with classroom doors
- extended learning areas are in addition to the minimum above and must not intrude into the egress pathway. Seating areas in extended learning areas must meet fire code.
- lobbies are in addition to the circulation requirement.
- instructional and activity areas shall be accessible by corridors without passing through another instructional or activity area.
- the corridors are to meet the egress requirements of applicable codes.
- stairs, ramps, and elevators are included under the corridor category.
- it is recommended that stairs in multi-story buildings not be enclosed unless required by code. However, such a design should not allow students to lean over railings or put arms/legs through posts.

activities

circulation space

LEGEND ///

● **fixed furnishings**

F52 fire extinguisher

F53 recessed floor mats

F54 digital boards

F71 tack board

F72 3D displays

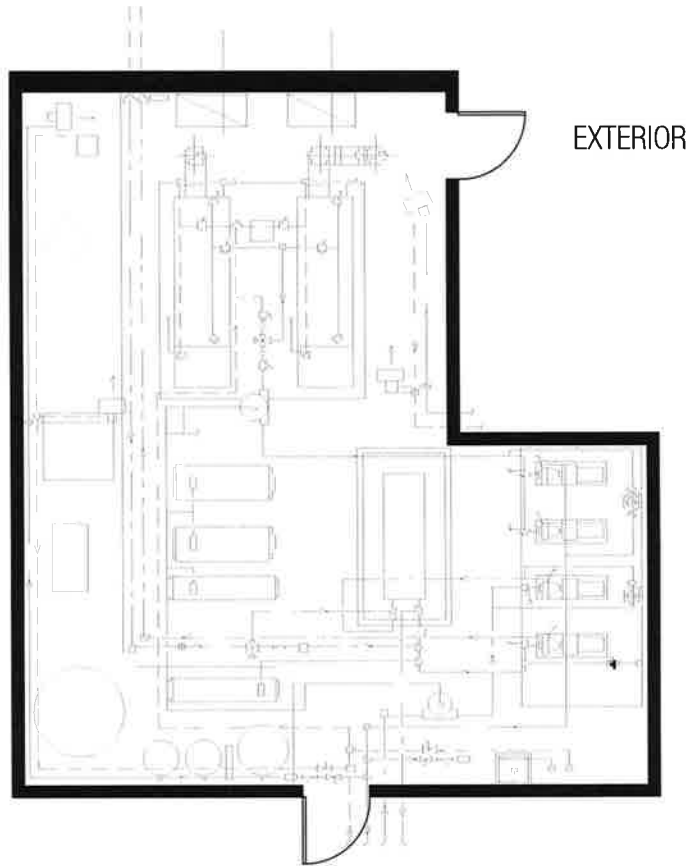
F79 tackable surface (boards or tack strips)

◻ **loose furnishings**

n/a

■ **AV & IT equipment**

n/a



EXTERIOR

E-BS-9 /// MECHANICAL / ELECTRICAL SPACE / DECKS

capacity/users

based on the size of the program

ancillary spaces

n/a

spatial relationships

accessible for maintenance and repair

access to outside

isolate from main area of building

near loading/receiving area

near custodial area

goals

storage for mechanical and electrical
equipment

activities

space for mechanical and electrical
equipment

environmental considerations

uniform lighting

environmental sound control

electrical outlets for equipment

LEGEND ///

● **fixed furnishings**

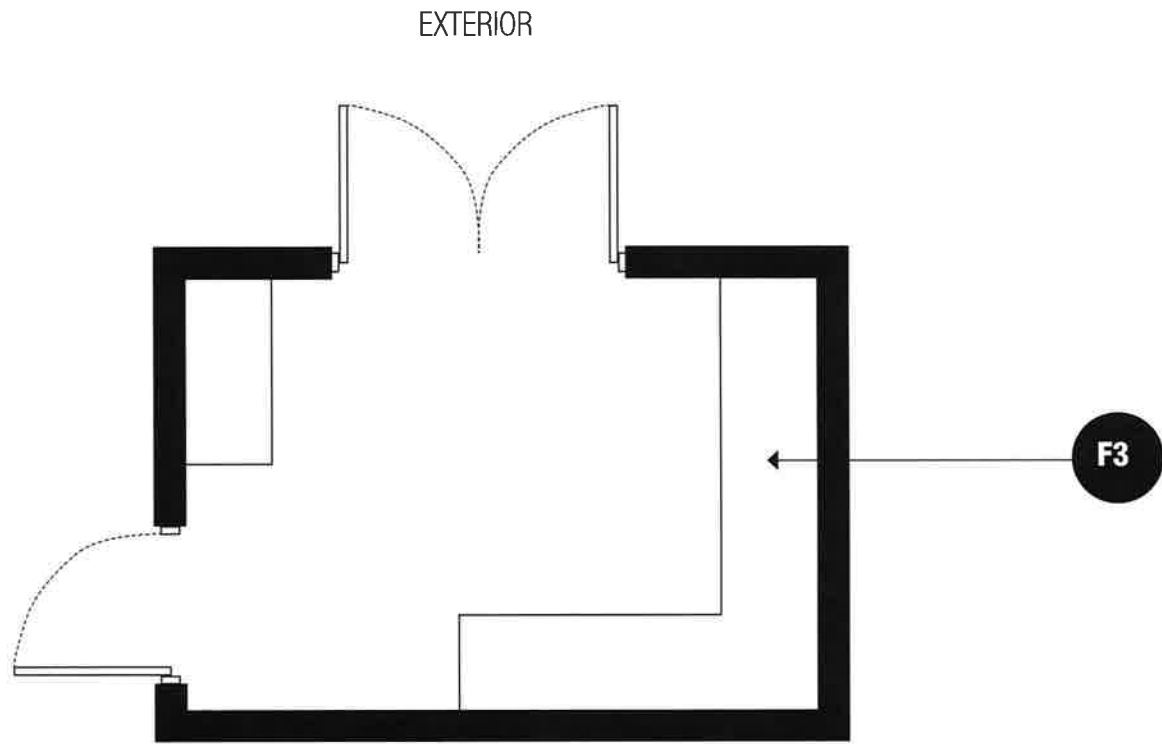
n/a

⬡ **loose furnishings**

n/a

■ **AV & IT equipment**

n/a



E-BS-10 /// CUSTODIAL EQUIPMENT STORAGE

size

300 SF

capacity/users

3-4 people

ancillary spaces

n/a

spatial relationships

- accessible for maintenance and repair
- access to outside
- isolate from main area of building
- near loading/receiving area
- near custodial area

goals

- storage for custodial equipment and supplies

activities

- near custodial workroom
- near custodial office
- direct access to outdoors

environmental considerations

- uniform lighting
- environmental sound control
- electrical outlets for equipment

LEGEND ///



fixed furnishings

F3 wall shelving (10'-16', depth may vary)
(all walls)



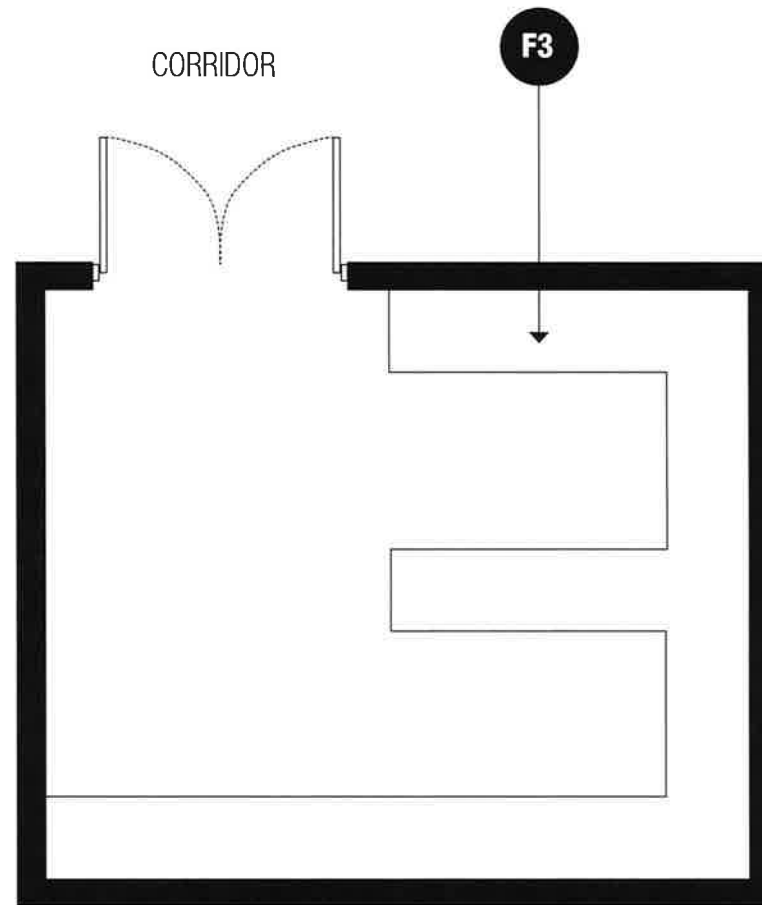
loose furnishings

N/A



AV & IT equipment

n/a



E-BS-11 /// **CENTRAL STORAGE AREA**

size

325-700 SF

capacity/users

3-4 people

ancillary spaces

n/a

spatial relationships

near loading/receiving area

direct access to building circulation

goals

storage of supplies

activities

storage for paper products, utensils,
supplies. etc., to be used throughout
the entire building

environmental considerations

uniform lighting

environmental sound control

electrical outlets for equipment

LEGEND ///

● **fixed furnishings**

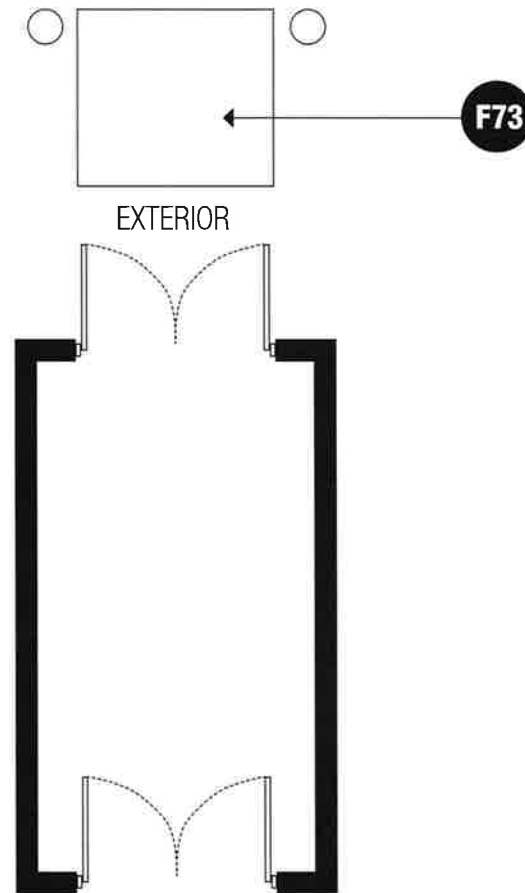
F3 wall shelving (26' -32', depth may vary)

○ **loose furnishings**

n/a

■ **AV & IT equipment**

n/a



E-BS-12 /// RECEIVING AREA

size

150 SF

capacity/users

1-2 people

ancillary spaces

N/A

spatial relationships

- near food service spaces
- near central storage area
- near mechanical room
- adjacent to loading dock

goals

- area to load and receive supplies and food

activities

- delivery of materials and goods to be used throughout the building

environmental Considerations

- uniform lighting
- appropriate drainage
- hose bib

LEGEND ///

● **fixed furnishings**

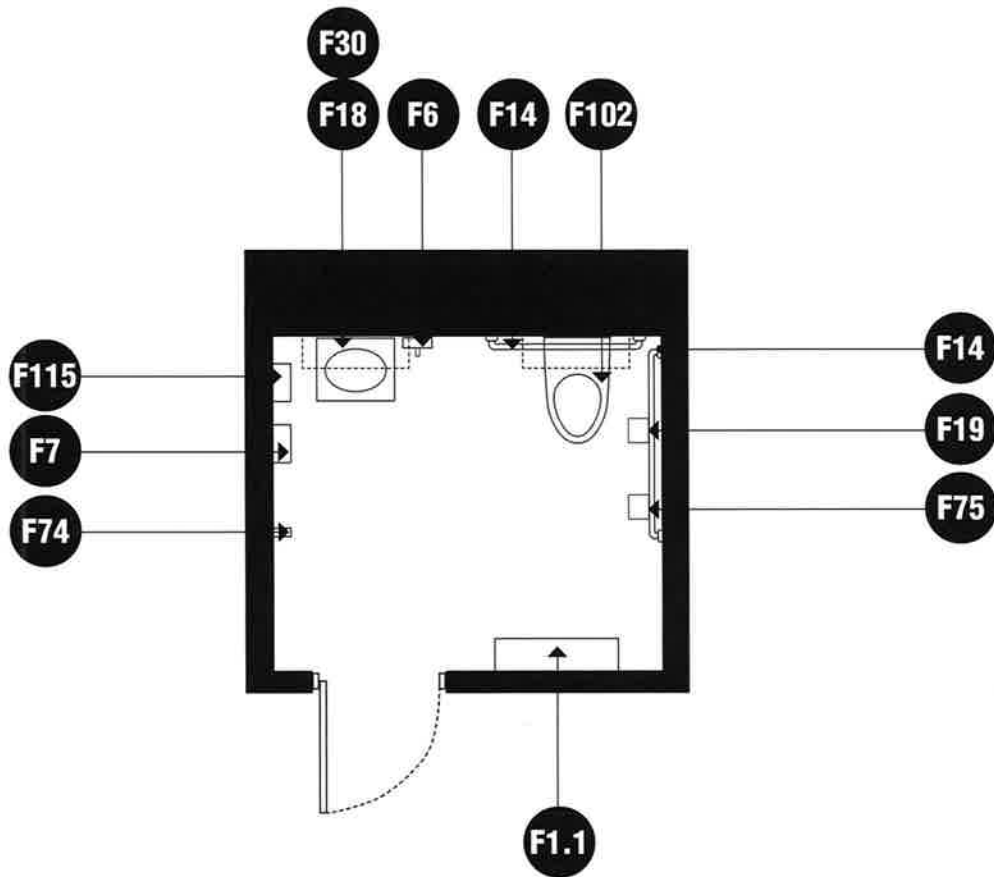
F73 loading dock levelers and dock bumpers

○ **loose furnishings**

n/a

■ **AV & IT equipment**

n/a



E-BS-13 /// STAFF RESTROOM

size

65 SF

capacity/users

1 person

ancillary spaces

n/a

spatial relationships

near academic core classrooms

near teacher collaboration room

near administrative suite

goals

provide a private bathroom for staff

activities

personal and health needs for

administrative staff

changing clothes

environmental considerations

uniform lighting

environmental sound control

moisture- and stain-resistant finishes

adequate exhaust/ventilation

● LEGEND ///**fixed furnishings**

F1.1 casework (wall cabinets)

F6 soap dispenser

F7 towel dispenser

F14 36" and 42" grab bars (36" and 42")

F18 mirror

F19 toilet tissue holder

F30 bathroom sink

F74 coat hook-bathroom accessory

F75 sanitary napkin dispenser

F102 toilet

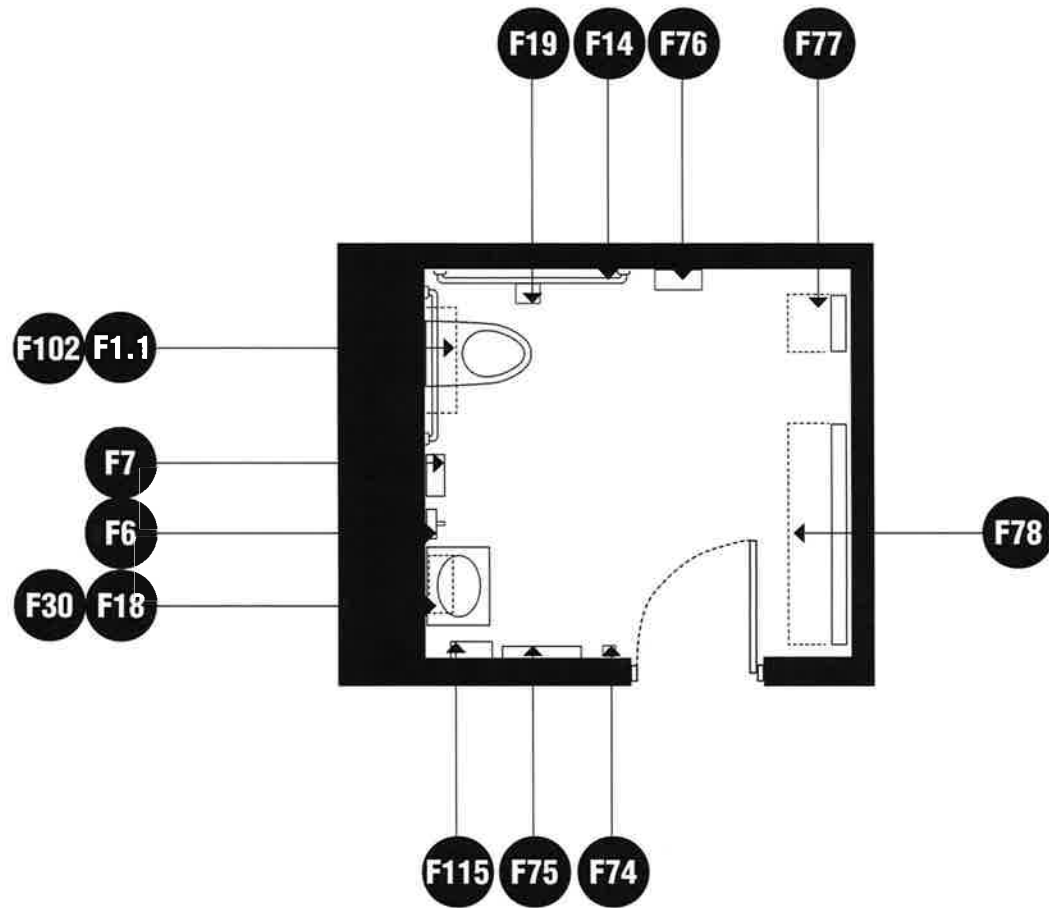
F115 hand dryer

**loose furnishings**

n/a

**AV & IT equipment**

n/a



E-BS-14 /// FAMILY RESTROOM

size

65 SF

capacity/users

1-2 people

ancillary spaces

n/a

spatial relationships

located in the administrative area, but
accessible to all building occupants

goals

provide a private bathroom for families
and handicapped

activities

personal health and handicap needs for
all building occupants

environmental considerations

uniform lighting
environmental sound control
moisture- and stain-resistant finishes
adequate exhaust/ventilation

● LEGEND ///**fixed furnishings**

F1.1 casework (wall cabinets)

F6 soap dispenser

F7 towel dispenser

F14 36" and 42" grab bars

F18 mirror

F19 toilet tissue holder

F30 bathroom sink

F74 coat hook-bathroom accessory

F75 sanitary napkin dispenser

F76 sanitary napkin disposal

F77 mounted child seat

F78 child changing station

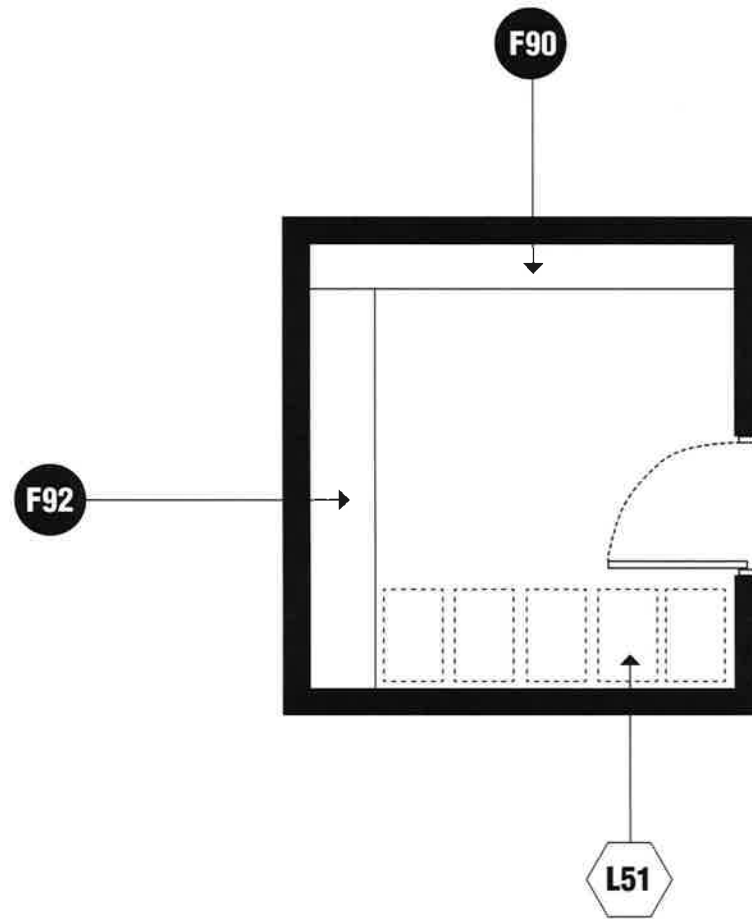
F102 toilet

F115 hand dryer

**loose furnishings**

n/a

**AV & IT equipment**



E-BS-15 /// TECHNOLOGY STORAGE

capacity/users

1 person

ancillary spaces

n/a

spatial relationships

distributed in academic core areas

goals

storage of computers and technology

activities

materials storage

environmental considerations

- uniform lighting
- environmental sound control
- electrical outlets for equipment
- secure and lockable door

LEGEND ///

● **fixed furnishings**

F90 storage shelving (12" deep)

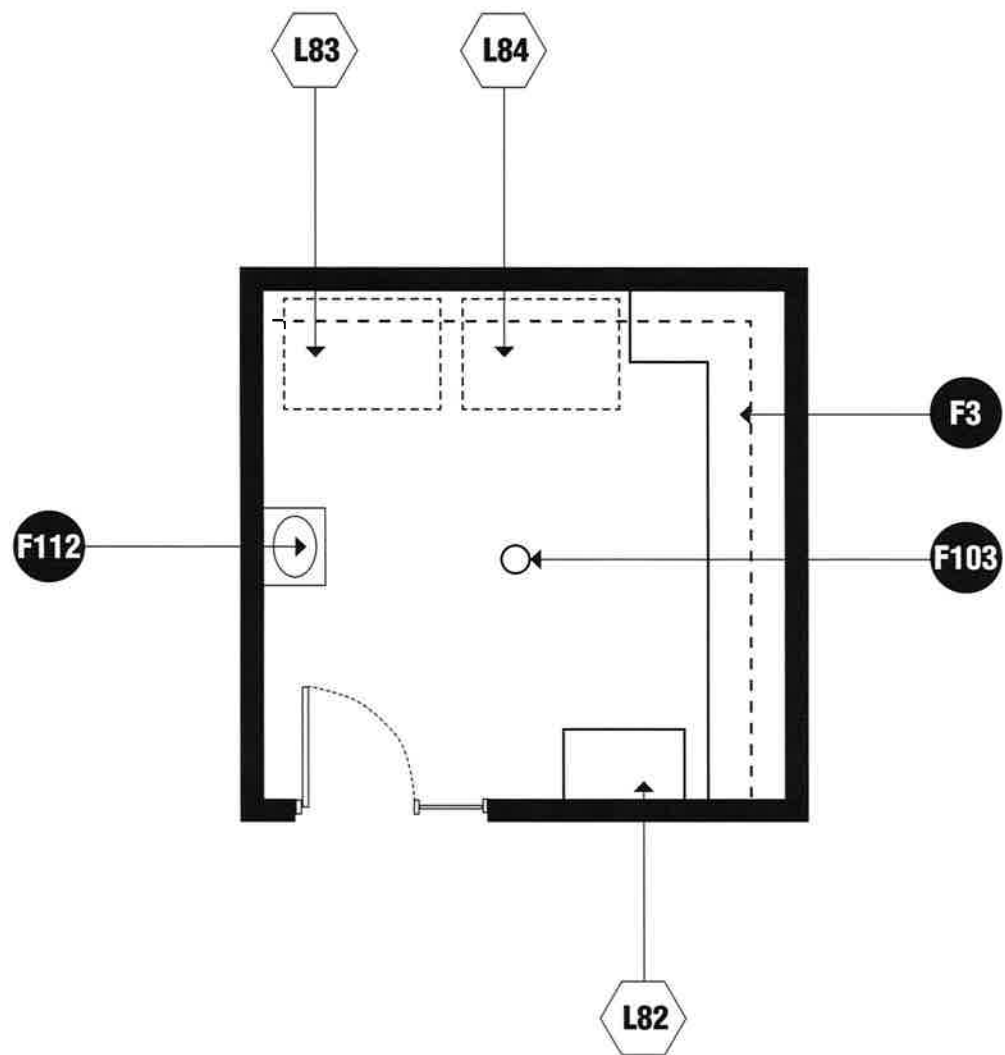
F92 storage shelving (18" deep)

◻ **loose furnishings**

L51 laptop charging cart (5-6)

■ **AV & IT equipment**

n/a



E-BS-16 /// LAUNDRY ROOM

size

80 SF

capacity/users

1 person

ancillary spaces

n/a

spatial relationships

near custodial office

near ECE (Pre-K) Academic Areas

goals

laundry services

activities

laundry services

environmental considerations

uniform lighting

environmental sound control

electrical outlets for equipment

secure and lockable door

venting for equipment

plumbing connections for equipment

LEGEND ///**● fixed furnishings**

F3 wall shelving (10'-16', depth may vary)

F103 floor drain

F112 laundry sink

⬡ loose furnishings

L82 hamper

L83 washer

L84 dryer

■ AV & IT equipment

n/a