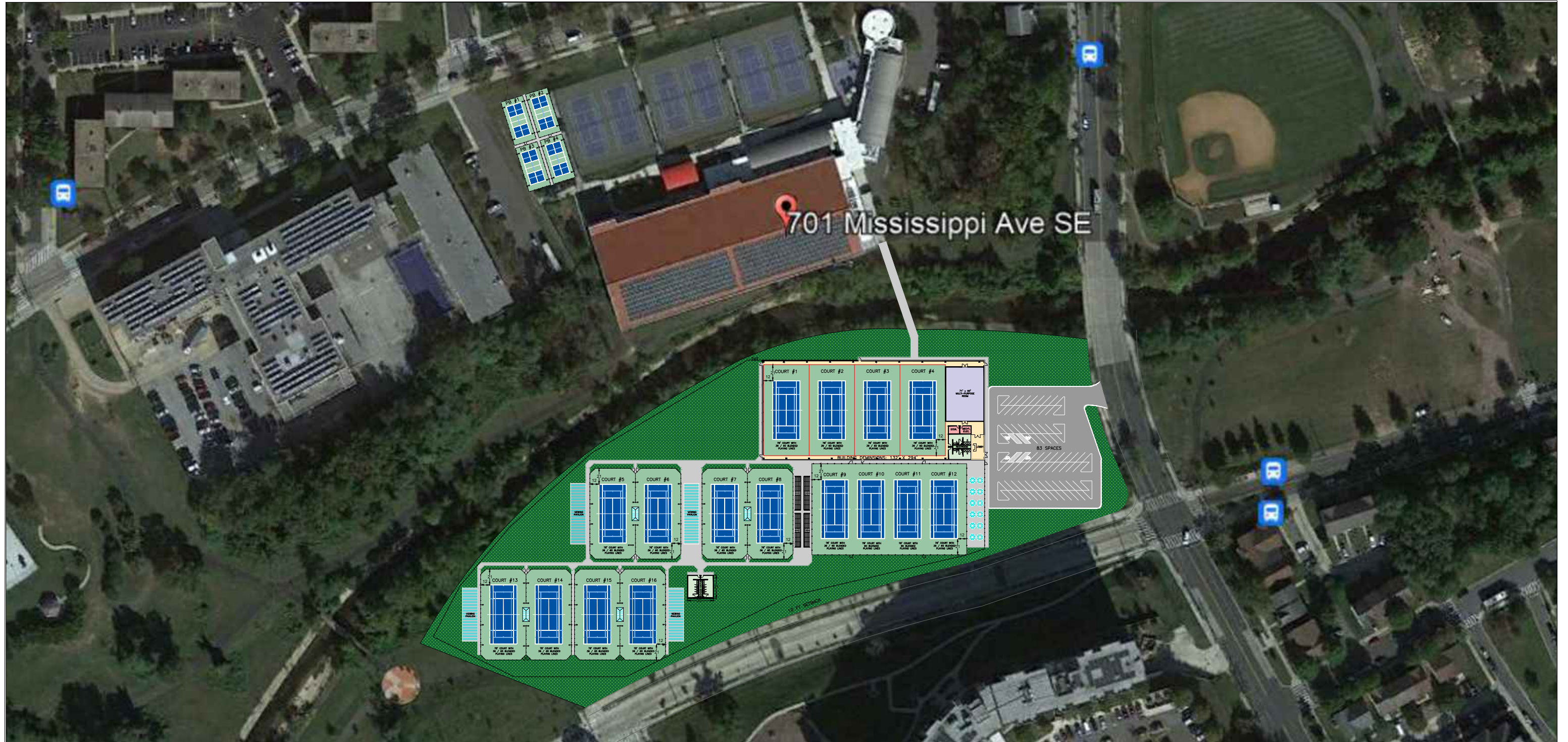


Concept Design - Design Layout #3



NOTES:

1. COURTS TO BE PROVIDED WITH 36 FOOT OR 36/60 FOOT BLENDED LINES PER USTA STANDARDS, AS INDICATED ON SITE PLAN.
2. PLAYER GATES SHOULD BE 4 FOOT WIDE TO ALLOW FOR WHEELCHAIR TENNIS PLAYERS TO ACCESS THE COURTS.
3. USTA RECOMMENDS 12 FEET (10 FOOT MINIMUM) BETWEEN THE SIDELINE AND ANY FIXED OBJECTS FOR 78-FOOT COURTS (8' MINIMUM FOR 36-FOOT COURTS)
4. FOR A CLASS III FACILITY, USTA RECOMMENDS AN AVERAGE MAINTAINED HORIZONTAL LIGHTING LEVEL OF 50 FOOT-CANDLES (40 FOOT-CANDLES MINIMUM) WITH A MAXIMUM UNIFORMITY RATIO OF 2.



PROJECT NAME:
**SOUTH EAST TENNIS
 AND LEARNING CENTER
 PROJECT LOCATION**

DATE: 2-28-22
 TPA NUMBER: 22DC29161

UNITED STATES TENNIS ASSOCIATION
 TODD CARLSON, NATIONAL MANAGER, INFRASTRUCTURE SERVICES
 JENNIFER GRISSOM, TENNIS FACILITY CONSULTANT, K2K ENGINEERING, LLC

DRAWN BY: ADH

DRAWING TITLE:

CHECKED BY: JLG

CONCEPTUAL SITE PLAN

DRAWING SCALE:
 3/32" = 1'

