

# ANACOSTIA

## RECREATION CENTER AT KETCHAM

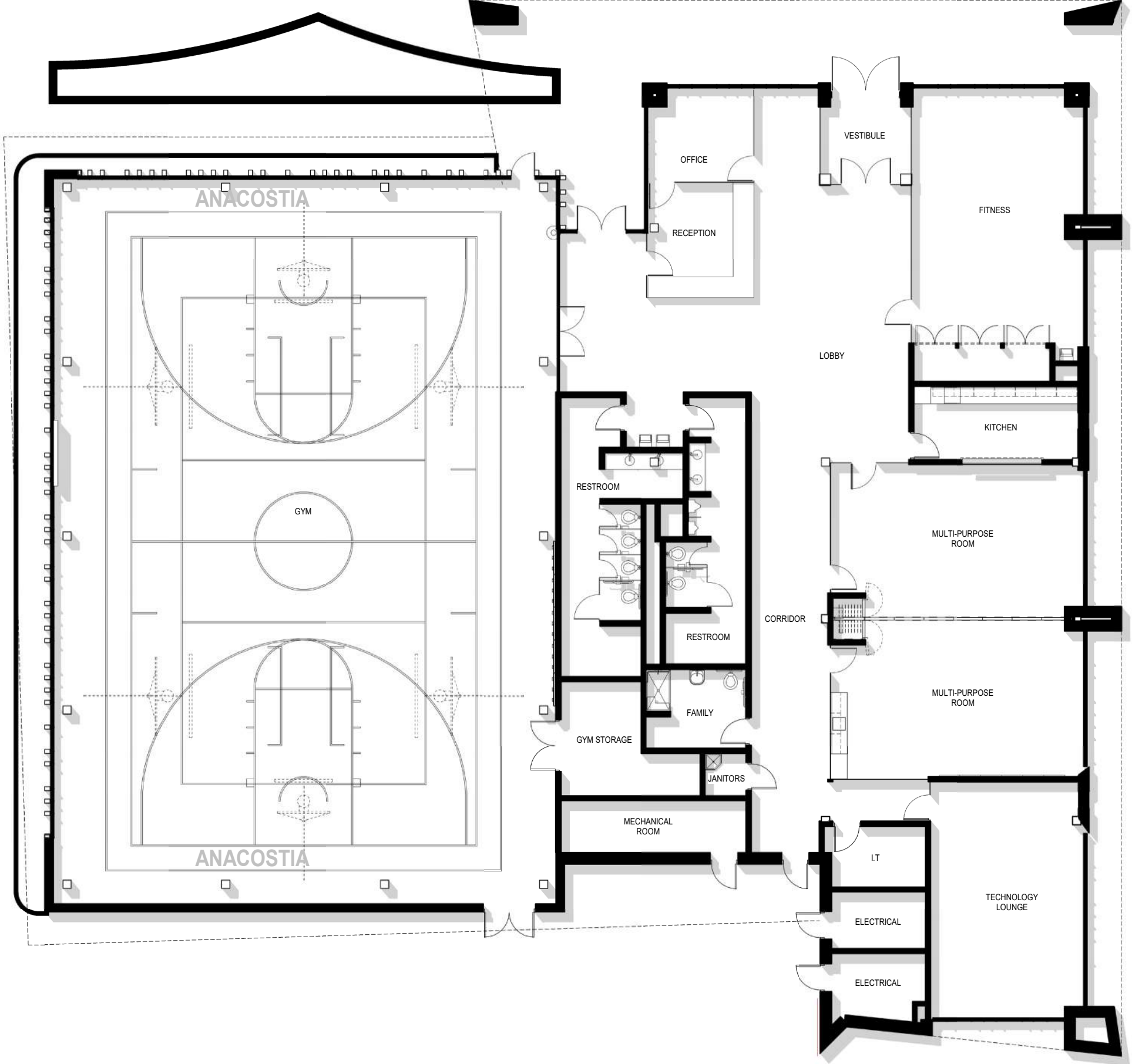
CONCEPT PRESENTATION  
7.06.2021



# TABLE OF CONTENTS

01	FLOOR PLAN OVERALL FLOORING MATERIALS INTERIOR WALL TYPES
04	CONCEPT ONE - SHELTER
07	CONCEPT TWO - CONNECTION
10	PROGRAMMING

# FLOOR PLAN - OVERALL



# FLOOR PLAN - FLOORING MATERIALS

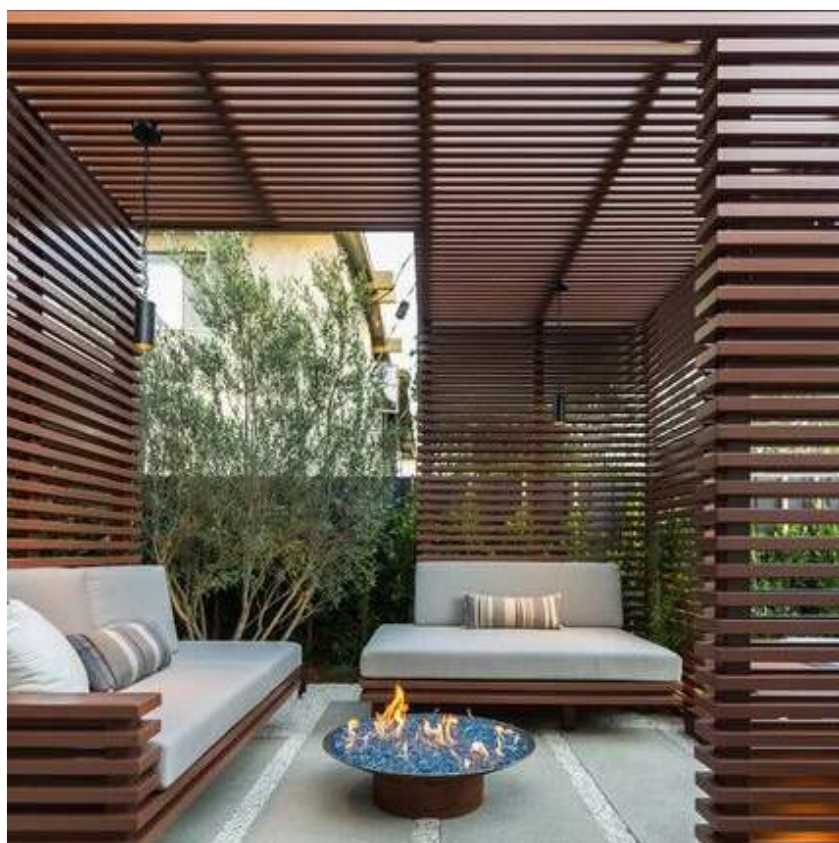


# FLOOR PLAN - INTERIOR WALL TYPES



- GROUND FACE BLOCK
- DRYWALL
- CURTAIN WALL

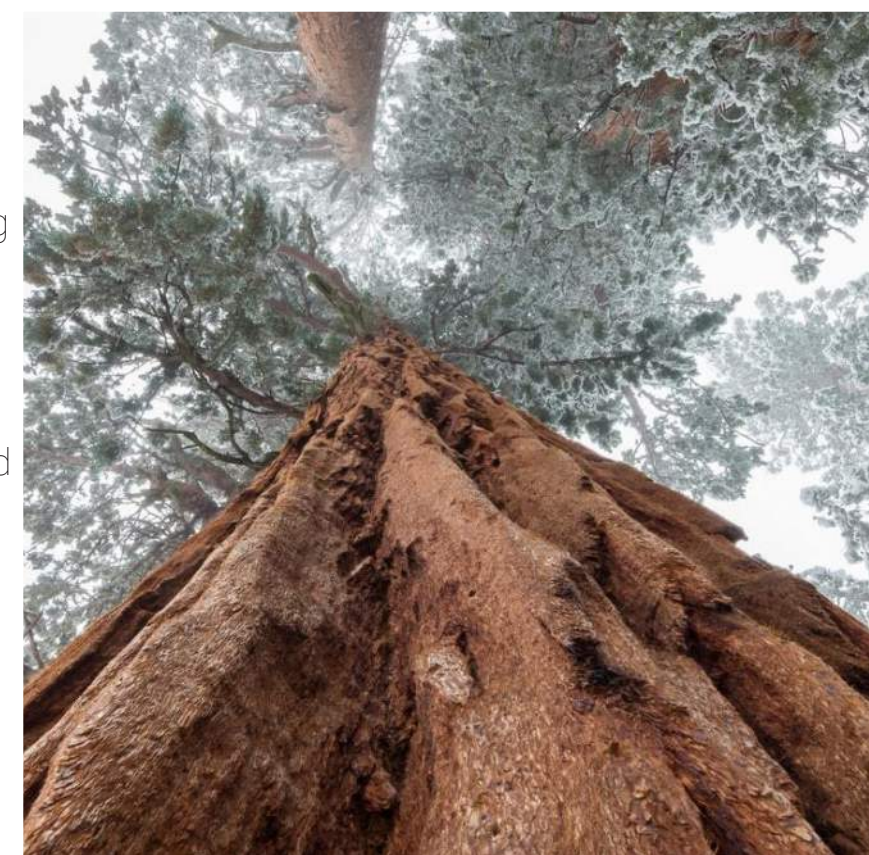
# CONCEPT: **SHELTER**



Outlining a projection or shelter from the lines of the exterior structure.

A structure or element that provides feeling of safety and security when transitioning from space to space.

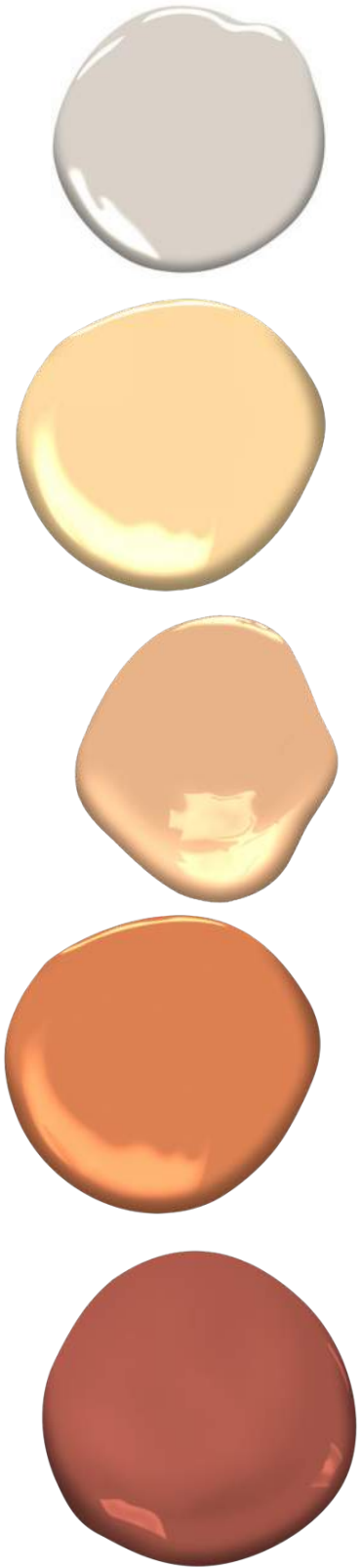
Develop moments in space through layered texture and color to create a dynamic environment.



# SHELTER - MOOD BOARD

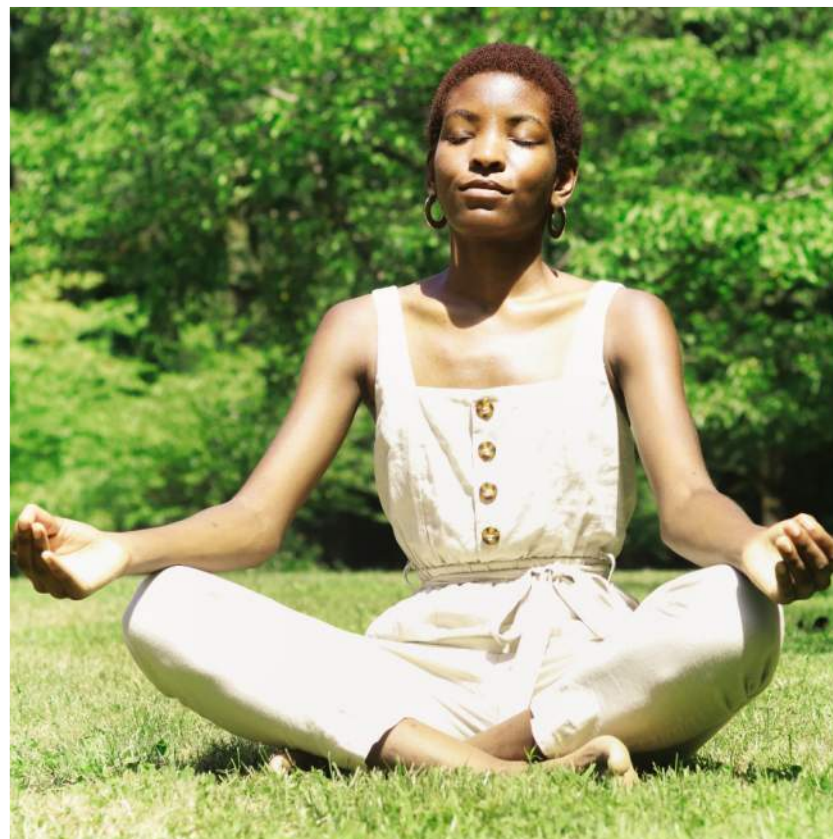


# SHELTER - CONCEPTUAL FINISHES





CONCEPT:  
**CONNECTION**



**...to the community**

a group of people living in the same area working towards a common goal.

**...to nature**

the phenomena of the physical world, including plants, animals, and landscape.

**...to adaptability**

to be able to adjust to new conditions, to be modified for a new use or purpose.



# CONNECTION - MOOD BOARD



NATURE



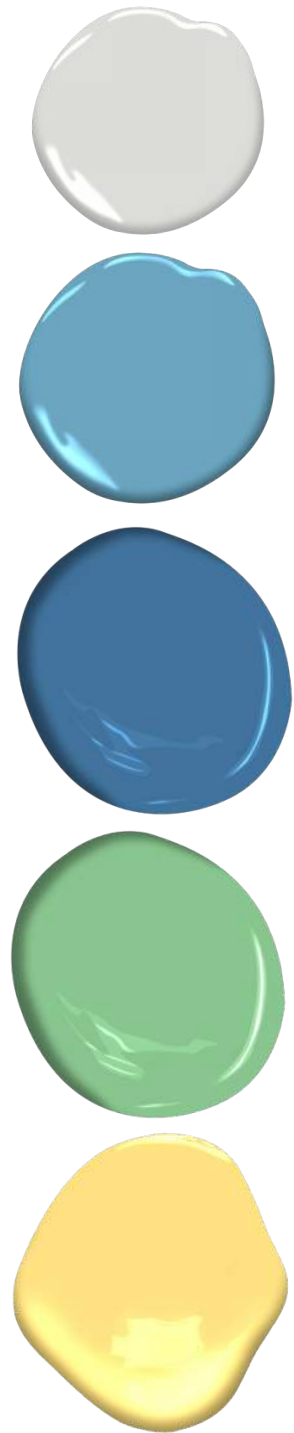
COMMUNITY



ADAPTABILITY



# CONNECTION - CONCEPTUAL FINISHES



# PROGRAMMING

LOBBY + RECEPTION DESK + OFFICE

GYMNASIUM

FITNESS ROOM

KITCHEN

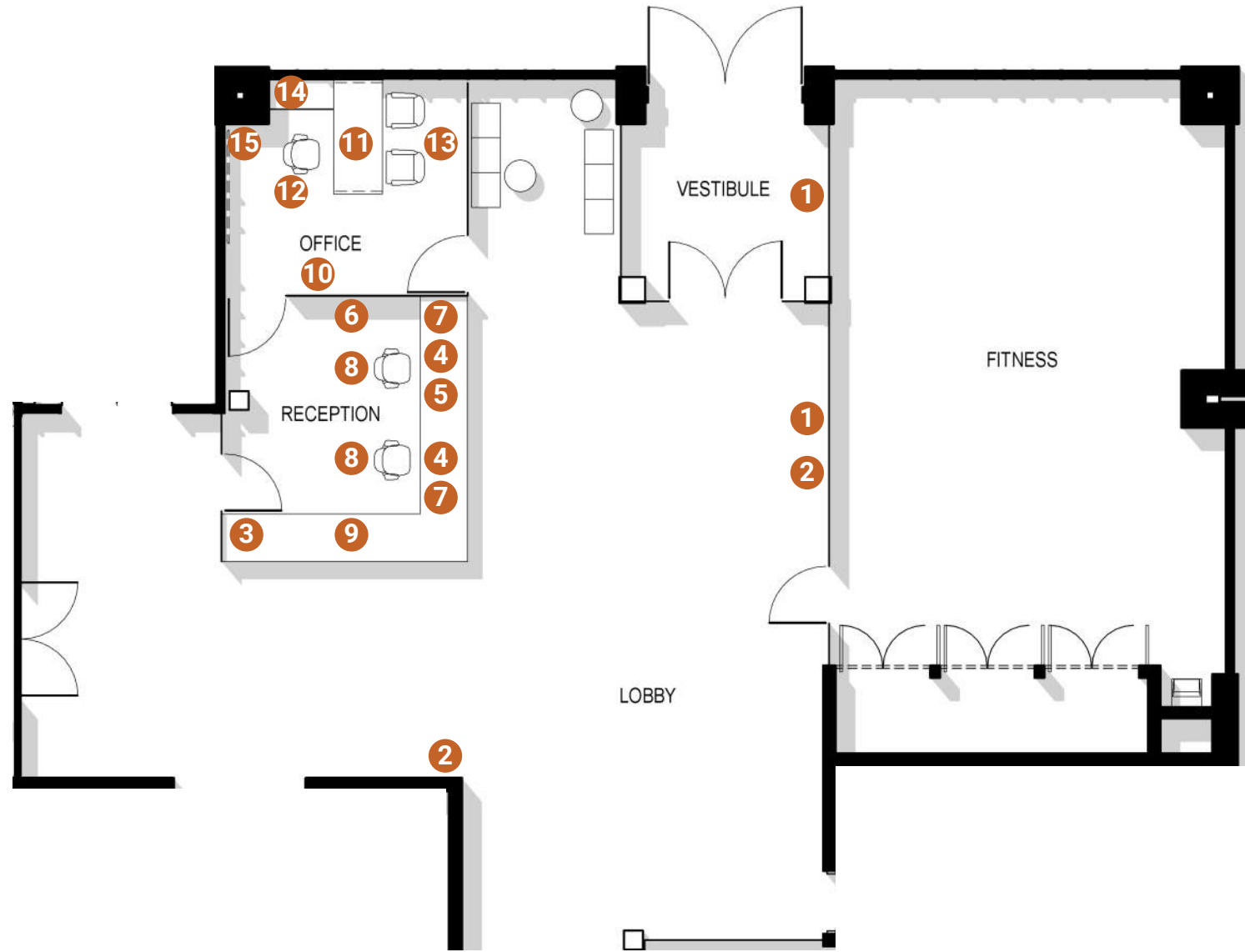
MULTI-PURPOSE

TECHNOLOGY

IT + ELECTRICAL

RESTROOMS

# LOBBY + RECEPTION DESK + OFFICE - PROGRAMMING



## LOBBY

- 1 DPR SIGNAGE
- 2 72" TELEVISIONS - CEILING MOUNTED.

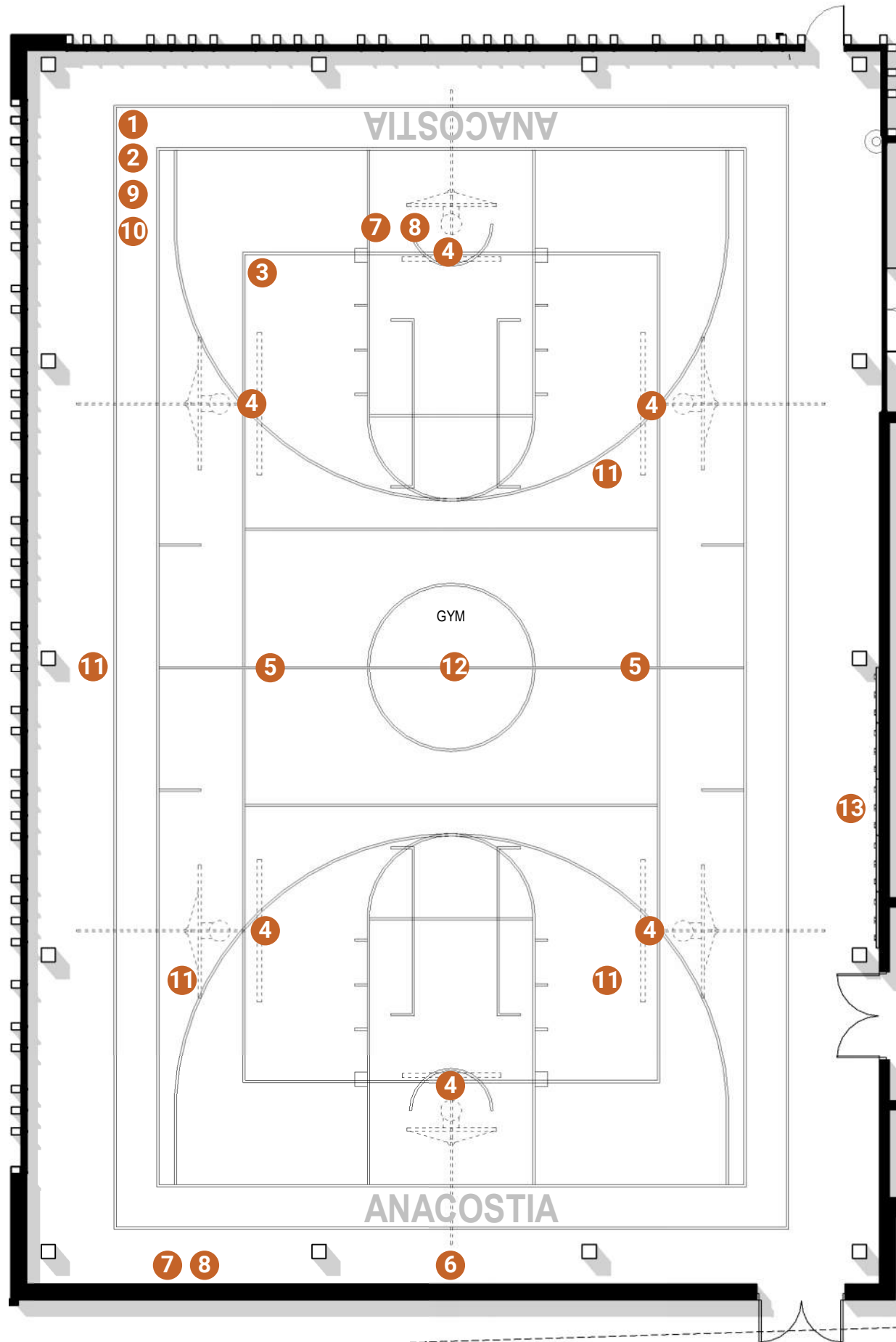
## RECEPTION DESK

- 3 DESK MUST ACCOMMODATE AT LEAST (2) EMPLOYEES.
- 4 ONE DESKTOP COMPUTER (PER STAFF MEMBER STATIONED AT RECEPTION DESK)
- 5 ONE DESKTOP COMPUTER FOR SECURITY CAMERA.
- 6 ELECTRICAL AND DATA OUTLETS NEEDED TO OPERATE THE COMPUTERS, PHONES, AND ANOTHER OTHER SYSTEMS HOUSED AT RECEPTION DESK.
- 7 TELEPHONE (ONE PER EMPLOYEE STATIONED AT RECEPTION DESK).
- 8 TASK CHAIRS (KI FURNITURE, ALTUS MESH – ALTMFA – PLASTIC BASE, HARD FLOOR CASTERS, COLOR – GREY MESH).
- 9 ACTUAL DESK SHOULD PROVIDE ACCESS TO ACCOMMODATE A VISITOR THAT MIGHT ARRIVE IN A WHEELCHAIR.

## OFFICE

- 10 SHOULD HOUSE AED MACHINE (LIFEPAK SERIES 1000 DEFIBRILLATOR SYSTEM; BOTH INFANT AND ADULT BOTH BABY AND ADULT PADS ARE REQUIRED AND A WALL CABINET FOR STORAGE)
- 11 RECTANGULAR WORKSTATIONS (KI FURNITURE, 700 DESKING SYSTEM, BASE COLOR – NORTH SEA, TOP COLOR – KENSINGTON MAPLE)
- 12 TASK CHAIRS (KI FURNITURE, ALTUS MESH – ALTMFA – PLASTIC BASE, HARD FLOOR CASTERS, COLOR – GREY MESH)
- 13 COUCH (KI FURNITURE, SIZE TBD, FLEX MULTIPLE F033)
- 14 FILING CABINETS
- 15 PA SYSTEM

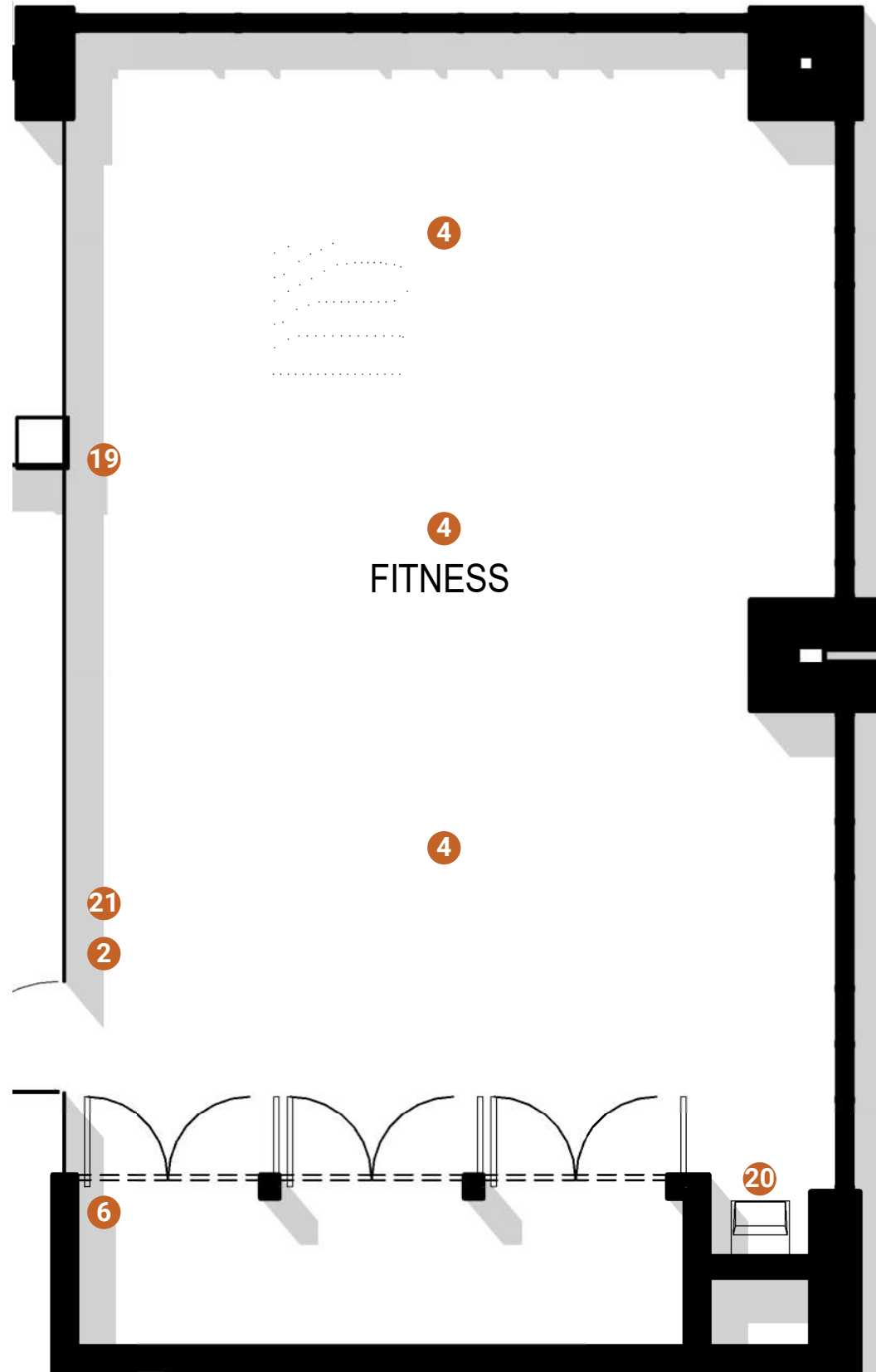
# GYMNASIUM - PROGRAMMING



## GYMNASIUM

- 1 84' X 50' BASKETBALL COURT WITH AT LEAST 8' BUFFER BETWEEN ANY WALLS OR BLEACHERS.
- 2 CROSS BASKETBALL COURTS (2): 59' X 42'
- 3 VOLLEYBALL COURT (1): 59' X 29.5'
- 4 SIX (6) REAR-FOLDING, REAR-BRACED BASKETBALL GOAL SYSTEMS.
- 5 VOLLEYBALL SLEEVES PER MANUFACTURER'S RECOMMENDATIONS.
- 6 2" THICK WALL PADDING X 6' TALL.
- 7 SCOREBOARD; DAKTRONICS MODEL BB-2125 (BOD).
- 8 SCORING CONSOLE; DAKTRONICS ALL SPORT 500 SERIES CONTROLLER (BOD).
- 9 STANDARD MAPLE BASKETBALL FLOORING AFFIXED TO CONCRETE SLAB.
- 10 GYM STRIPING LISTED IN ORDER OF PREDOMINANCE: 1) MAIN BASKETBALL 2) MAIN VOLLEYBALL 3) CROSS BASKETBALL. NOTE THAT ALL GAME LINES SHOULD BE 2" WIDE. INTERSECTING GAME LINES SHALL BE SEPARATED BY A NATURAL BREAK.
- 11 GYM DIVIDERS (REINFORCED VINYL WITH FULLY PADDED BATTEN, NO EXPOSED HARDWARE) WITH ELECTRIC MOTOR SYSTEM; 115-VOLT ACTUATOR.
- 12 DPR LOGO TO BE PAINTED WITHIN CENTER COURT CIRCLE (GRAPHIC/STRIPING LAYOUT TO BE PROVIDED BY OWNER).
- 13 ROCK CLIMBING WALL

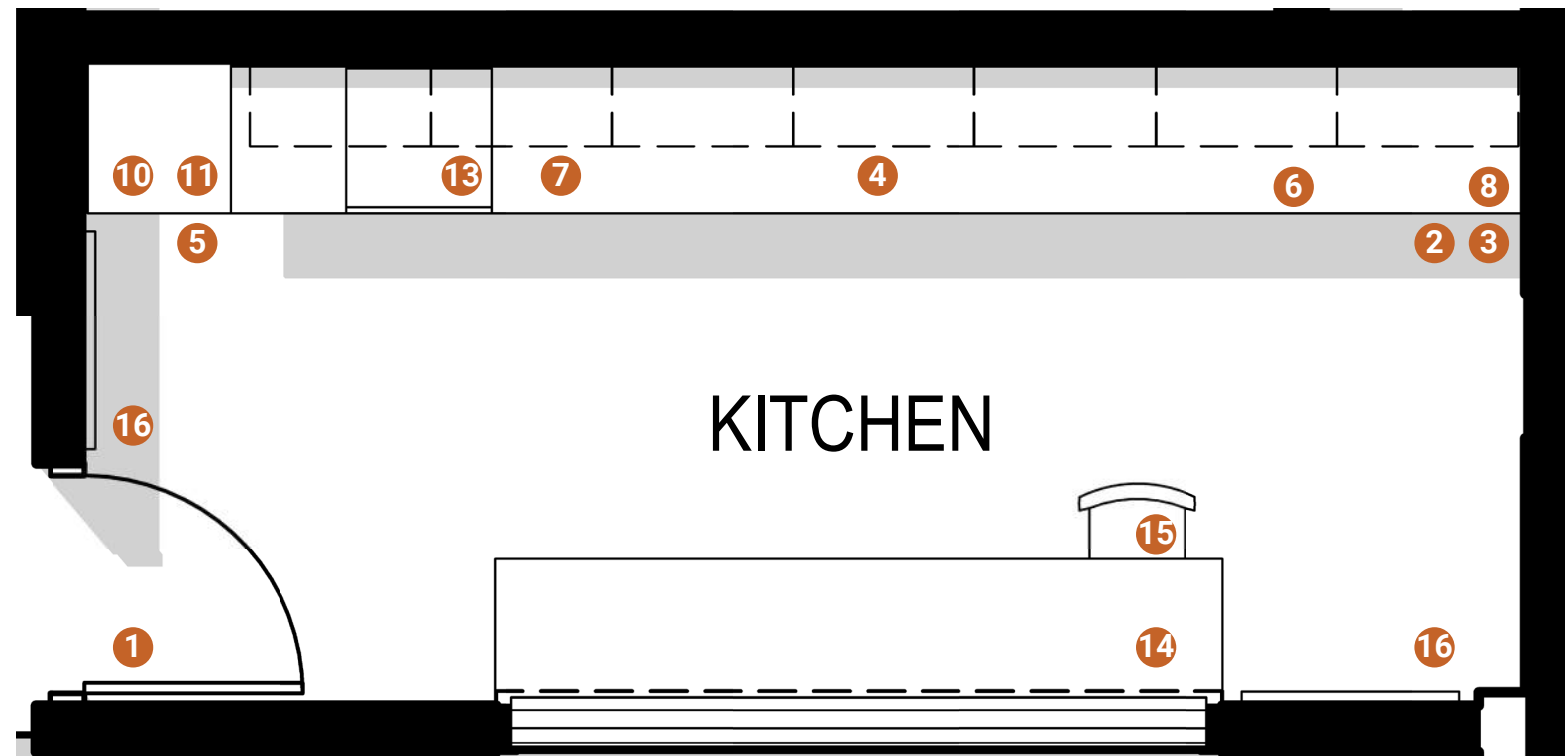
# FITNESS ROOM - PROGRAMMING



## FITNESS ROOM

- 1 SIZE DEPENDENT ON FACILITY.
- 2 HIGH IMPACT RUBBER FLOORING; 8MM INTERLOCKING TILES (METRON SERIES BLUE MF 21).
- 3 WALL-MOUNTED PURELL® 9019-01 WHITE SANITIZING WIPES WALL DISPENSER.
- 4 CEILING FANS; "AIRVOLUTION" MODEL 370, SIZE & QTY TBD (BASED ON CEILING HEIGHT AND ROOM SIZE).
- 5 WALL-MOUNTED 72" TELEVISIONS (QUANTITIES TBD BY SPATIAL CONSTRAINTS).
- 6 50 SF STORAGE ROOM.  
CURRENTLY SHOWING 66 SF
- 7 CYBEX FITNESS EQUIPMENT (QUANTITIES TBD BY SPATIA CONSTRAINTS).
- 8 CYBEX 770T TREADMILL.
- 9 CYBEX 770AT TOTAL BODY ARC TRAINER.
- 10 CYBEX 625 C UPRIGHT CYCLE.
- 11 CYBEX 625R RECUMBENT CYCLE.
- 12 CYBEX FREE WEIGHTS 50LB, 100LB.
- 13 CYBEX ADJUSTABLE DUMBBELL BENCH.
- 14 CYBEX LEG PRESS.
- 15 CYBEX TWIN TIER DUMBBELL RACK W/ BACKSTOP.
- 16 CYBEX BRAVO W/ PROGRESS STABILIZATION.
- 17 CYBEX VR1 DUAL MULTI-PRESS.
- 18 CYBEX VR1 DUAL LEG EXTENSION/CURL.
- 19 WALL MIRRORS
- 20 WATER FOUNTAIN (HALSET TAYLOR BI-LEVEL HAC COOLER WITH HYDROBOOST BOTTLE FILLER, MODEL HTHB-HAC8BLWF & HTHB-HACDBLWF)
- 21 DAY LOCKERS

# DEMONSTRATION KITCHEN - PROGRAMMING

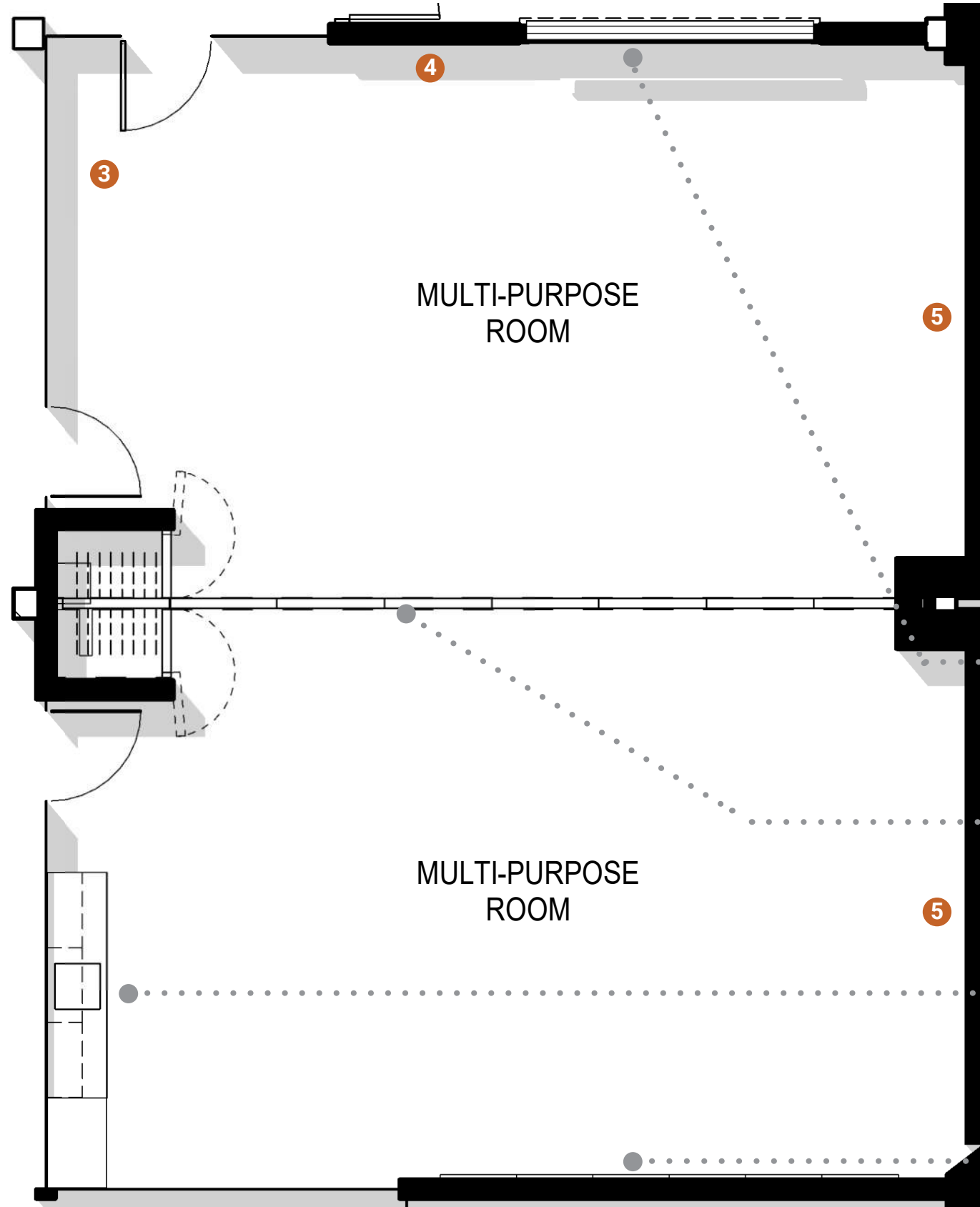


## KITCHEN

- 1 CT FLOORING.
- 2 CABINETS.
- 3 STAINLESS STEEL COUNTERTOPS.
- 4 THREE COMPARTMENT STAINLESS STEEL SINK (SHOULD BE ADA ACCESSIBLE).
- 5 ICEMAKER.
- 6 INDUCTION COOKTOP; GENERAL ELECTRIC MODEL NO. PHP9036DJBB.
- 7 MICROWAVE; GENERAL ELECTRIC MODEL NO. PEB9159SF-SS.
- 8 DOUBLE OVEN; GENERAL ELECTRIC PROFILE SERIES PK7500SF-SS.
- 9 DOUBLE WALL OVEN; GENERAL ELECTRIC MODEL NO. GE CAFÉ SERIES COMB30" CT9800SHSS.
- 10 REFRIGERATOR; CONTINENTAL MODEL NO. 1RE-SS.
- 11 FREEZER; CONTINENTAL MODEL NO. 1FE-SS.
- 12 USDA DUAL TEMP REFRIGERATOR; CONTINENTAL MODEL NO. 2RFE-SS.
- 13 DISHWASHER; GENERAL ELECTRIC MODEL NO. GLDT696DSS.
- 14 PREP TABLE; MICHIGAN MAPLE BLOCK MODEL F-STYLE OPEN BASE – CUSTOM SIZE 49"X28"X34".
- 15 HIGH STOOL WITH BACK; KI FURNITURE 800 SERIES: 24" HEIGHT, REGULAR W/ BACK FRAME: BLACK. SEAT: FABRIC. E VINYL REFLECTION.
- 16 WHITE BOARDS: US MAKER BOARD MODEL NO. PSM152A.



# MULTI-PURPOSE ROOM - PROGRAMMING



## MULTI-PURPOSE ROOM

- 1 FOLDING TABLES (KI FURNITURE, PIROETTE TABLE, 30" X 60", COLLABORATIVE RECTANGULAR LEGS W/ CASTERS, BODY COLOR - BLACK, TOP COLOR - KENSINGTON MAPLE)
- 2 STACKABLE CHAIRS (KI FURNITURE, APPLY STACK CHAIR ALNAP, BODY COLOR - BLACK, UPHOLSTERY COLOR - KENSINGTON MAPLE)
- 3 RUBBER TILE FLOORING
- 4 WHITE BOARDS: US MAKER BOARD MODEL NO. PSM152A
- 5 SHOULD INCLUDE WINDOW SHADES  
 SPRING-ASSIST MANUAL SHADE SYSTEM BY DRAPER  
 FABRIC: GREENSCREEN EVOLVE  
 COLOR: NATURAL  
 OPENNESS FACTOR: 1%  
 AVERAGE FABRIC THICKNESS: 0.027"  
 AVERAGE FABRIC WEIGHT: 8.41 OUNCES PER SQUARE

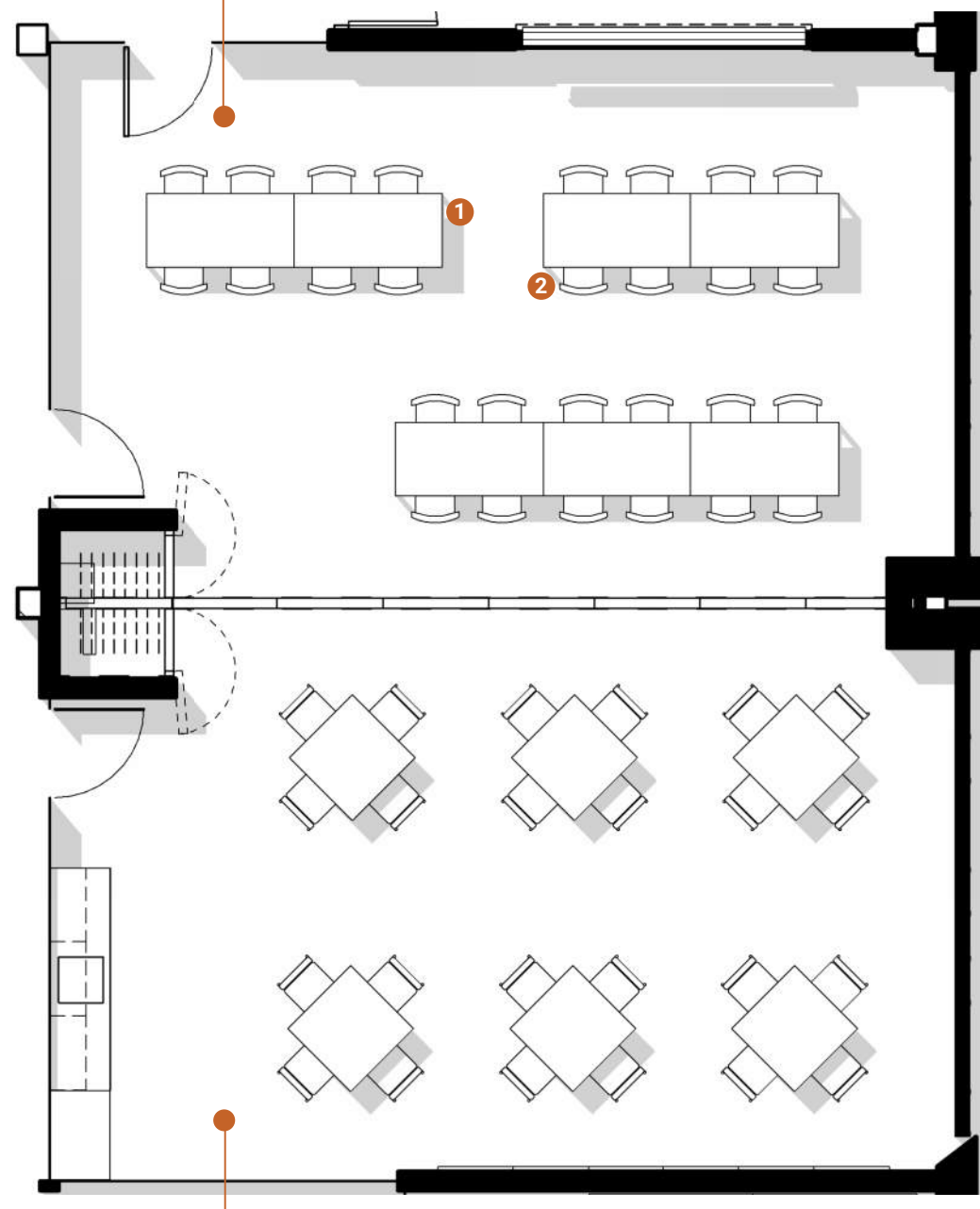
OPERATED COUNTER DOOR FOR EDUCATIONAL COOKING CLASSES

MOVEABLE PARTITION

ADDITIONAL STORAGE + SINK AREA

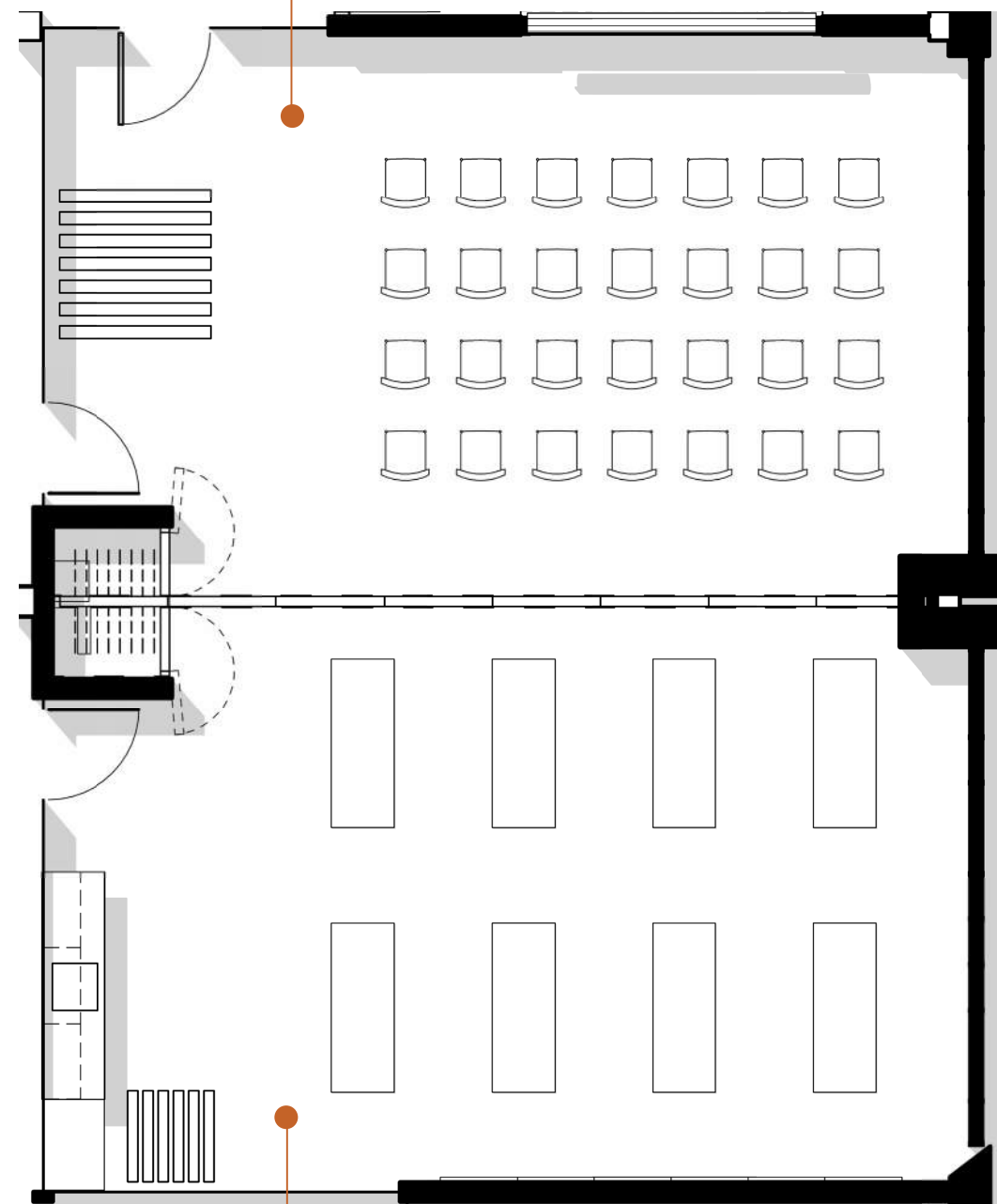
WALL MIRRORS

COOKING COURSE / ART CLASS



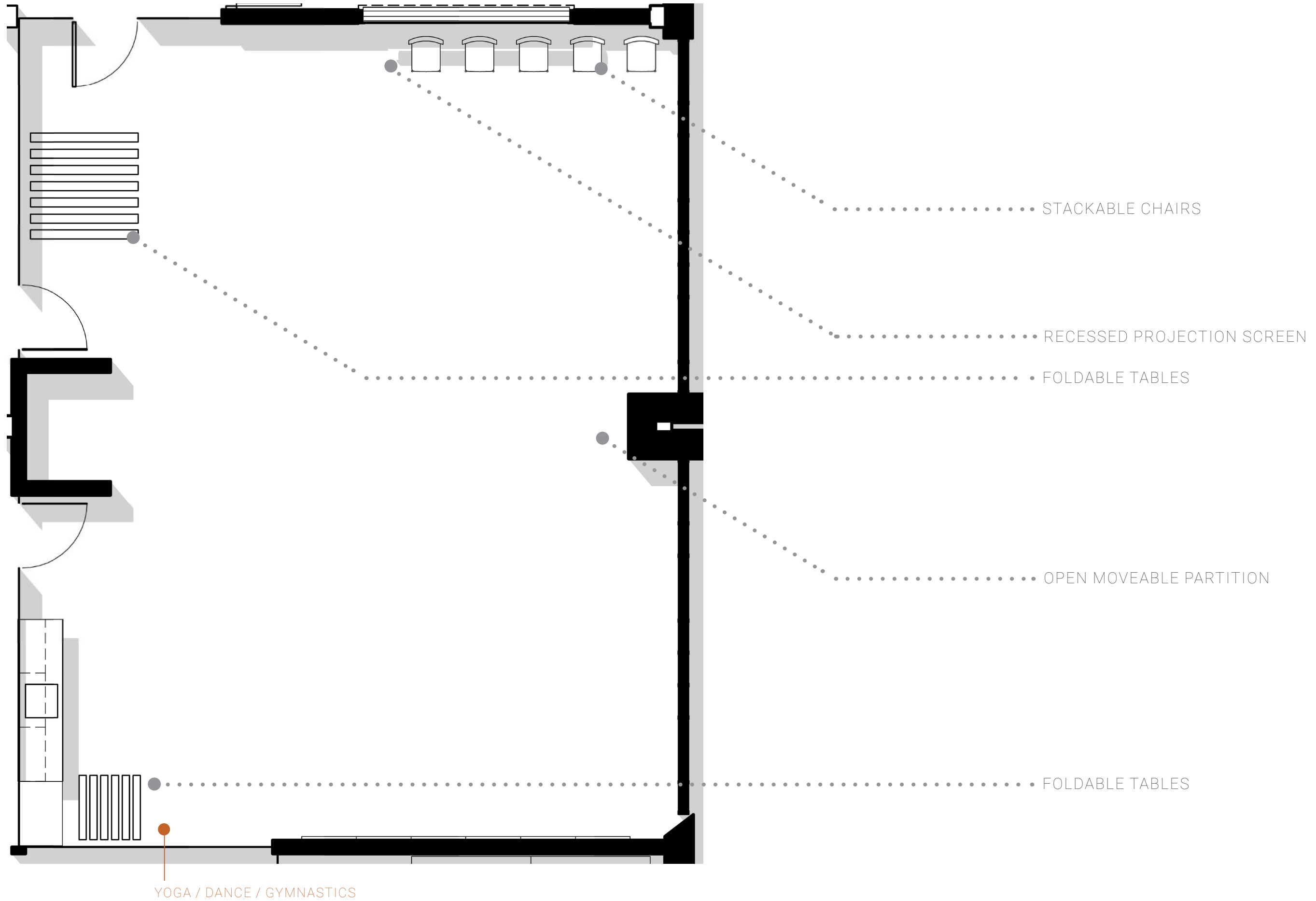
ART CLASS / GARDENING / BINGO / READING/POETRY CLUB

COOKING COURSE / FILM SCREENING

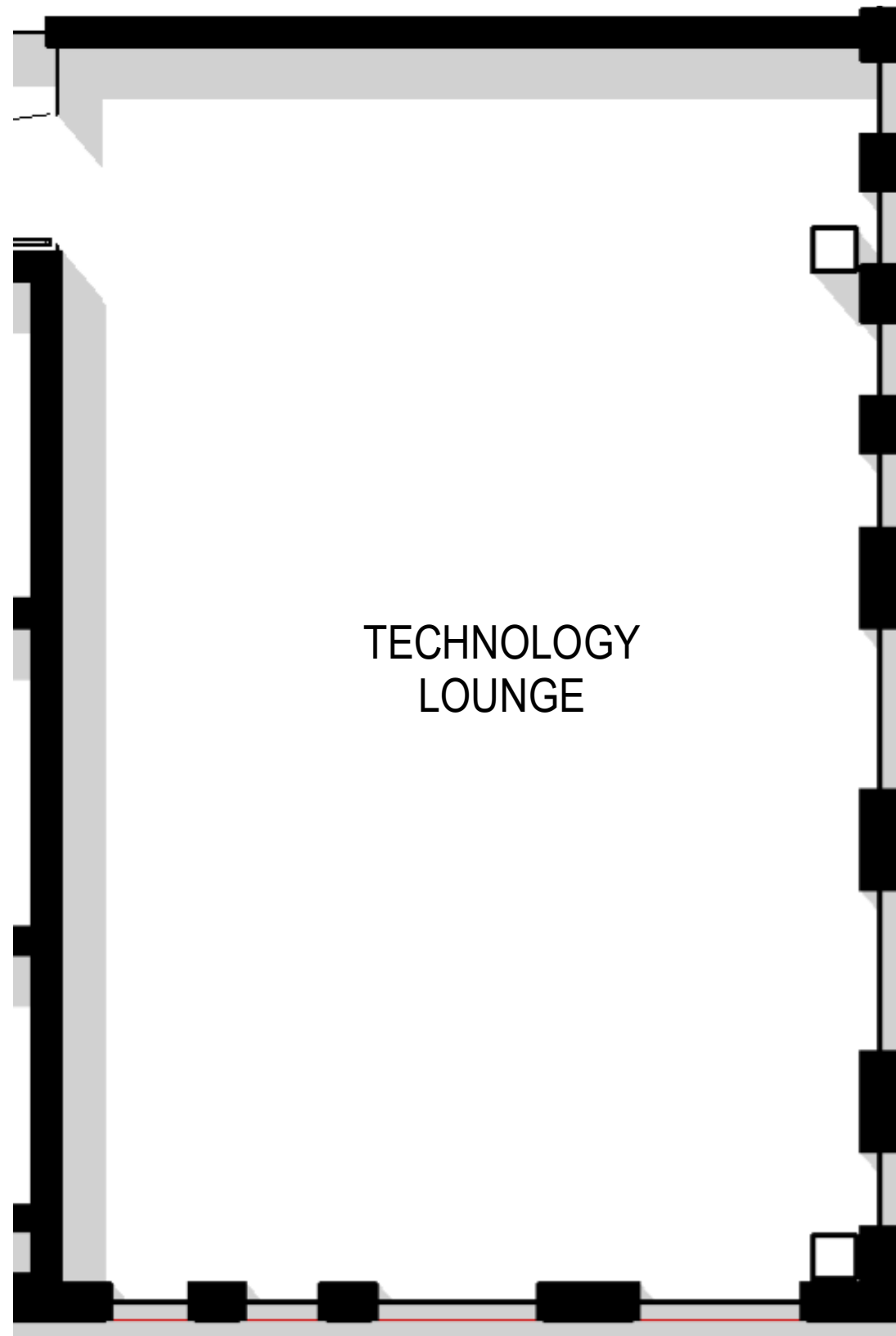


YOGA



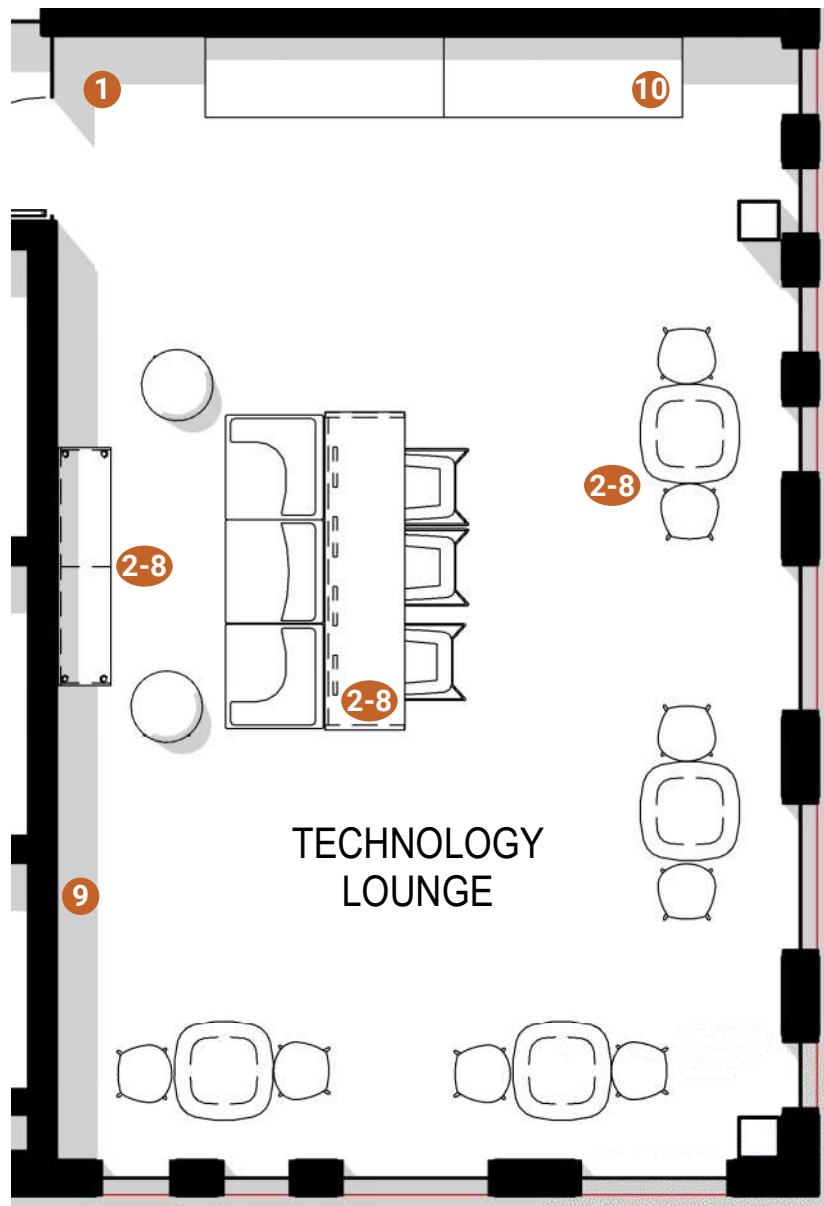


# TECHNOLOGY - PROGRAMMING



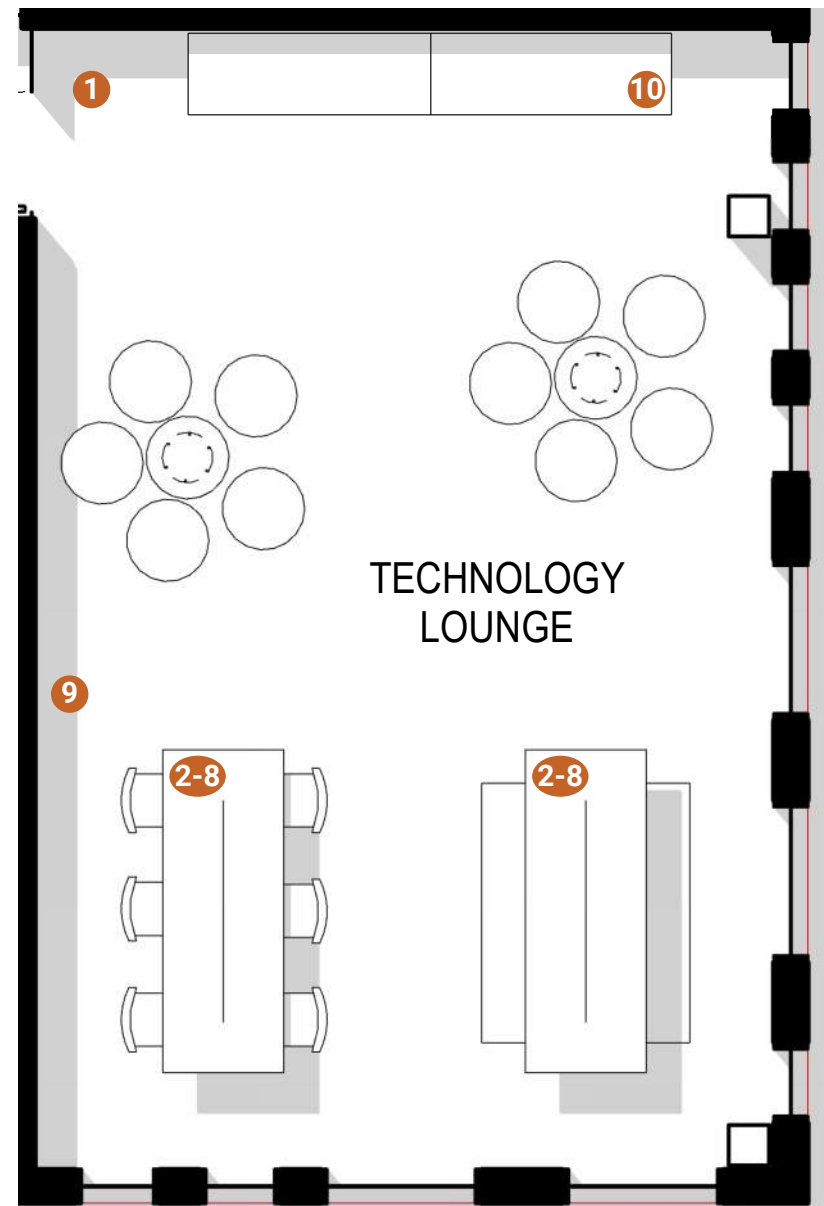
## TECHNOLOGY ROOM

- 1 FURNITURE.
- 2 HARDDRIVE.
- 3 OPTIPLEX 7040SFF.
- 4 INTEL® CORE™ I7-6700 PROCESSOR (QUAD CORE, 8MB, 8T, 3.4GHZ, 65W).
- 5 8GB (2X4G) 2133MHZ DDR4 MEMORY.
- 6 3.5 INCH 500GB 7200RPM HARD DISK DRIVE.
- 7 MONITOR  
DELL 24 MONITOR E2417H  
MANUFACTURER PART JGD2D  
DELL PART 210-AIWG
- 8 ADAPTER  
DELL ADAPTER – DISPLAYPORT TO DVI SINGLE-LINK  
MANUFACTURER PART 8K5HD  
DELL PART 470-AANH
- 9 WHITE BOARD: US MAKER BOARD MODEL NO. PSM152A.
- 10 PRINTERS/COPIERS ARE NOT PART OF CAPITAL FF&E PACKAGE.



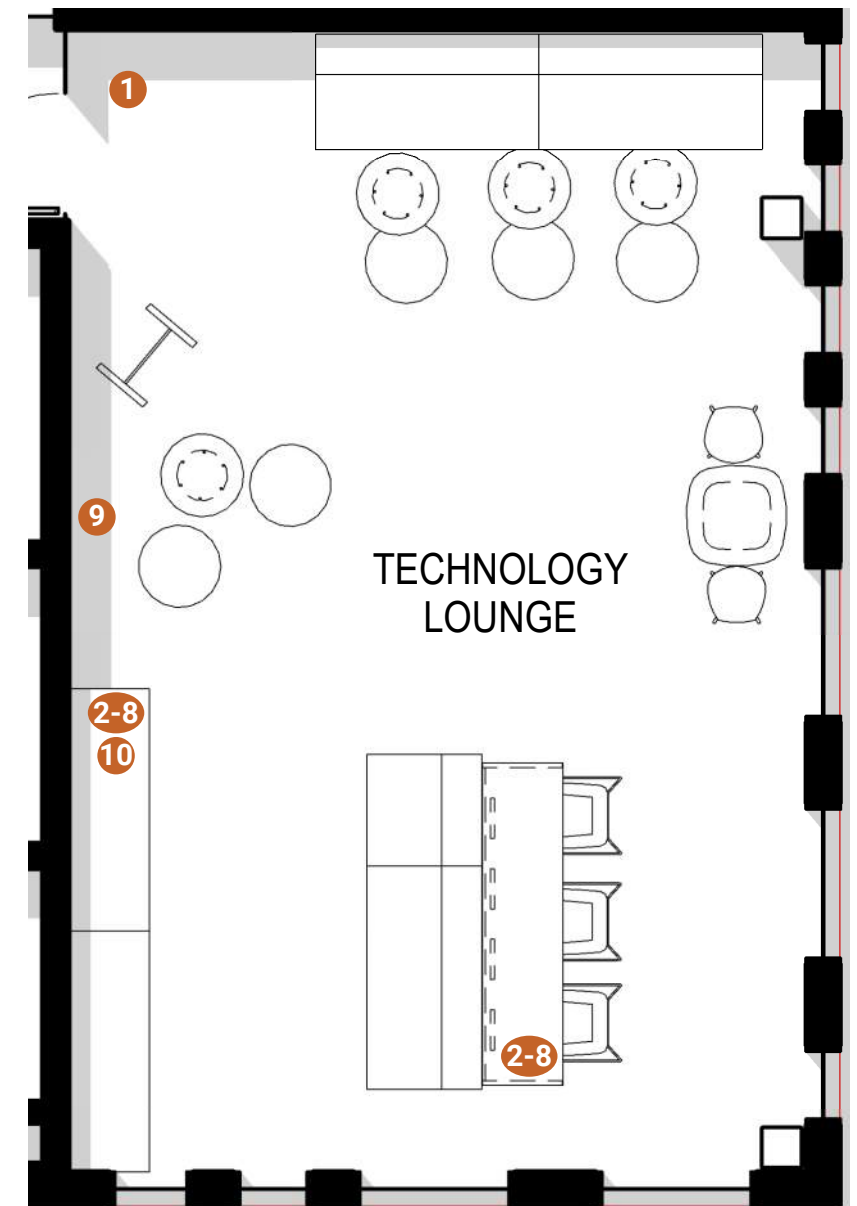
**LAYOUT A - THE HUB**

SHOWCASES A MIX OF SOFT SEATING TO CREATE FOCAL GAMING AREA. MULTIPLE TOUCHDOWN HIGH TOP TABLES WHERE USERS CAN UTILIZE LAPTOPS, READ AND SOCIALIZE. PRINTER / COPIER WITH ADDITIONAL STORAGE.



**LAYOUT B - THE SOCIAL SPHERE**

LARGE COMMUNITY DRIVEN TABLES THAT ENCOURAGE GATHERING. LARGE SURFACES PROVIDE POWER FOR TECHNOLOGY USE. MOVEABLE SOFT SEATING FOR ADDITIONAL SOCIALIZATION OR INDIVIDUAL WORK SPACE.

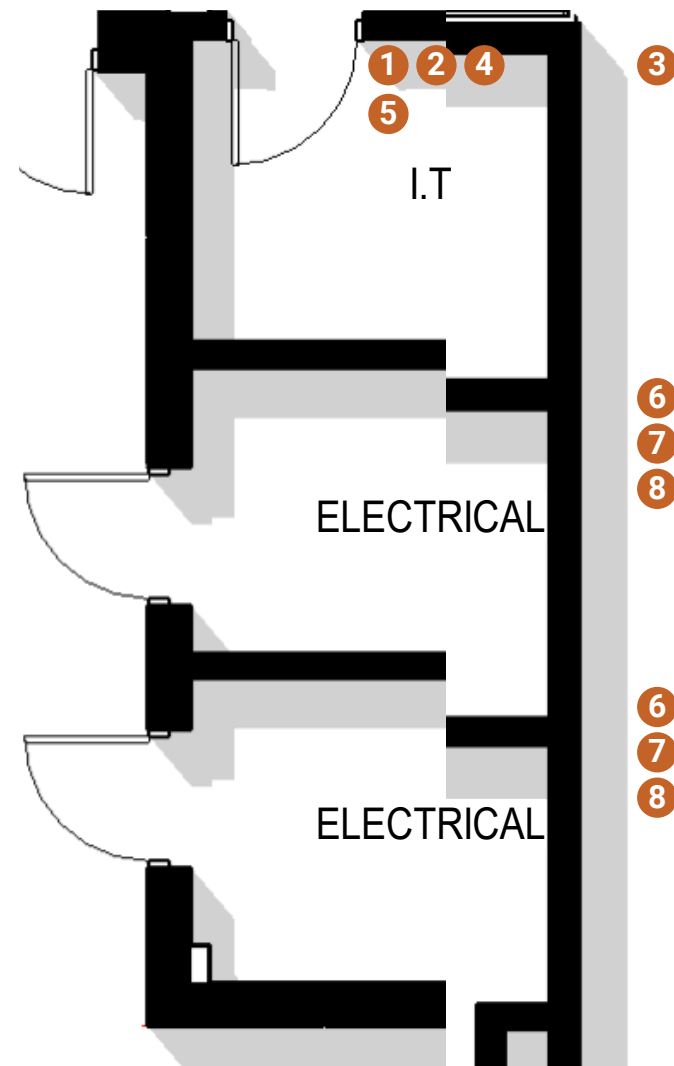


**LAYOUT C - THE FLEX ZONE**

VARIATIONS OF FIXED SEATING AND MOVABLE FURNITURE. CREDENZA PROVIDES EXTRA STORAGE IN GAMING ZONE, WHILE BANQUETTE SEATING ACCOMMODATES SUPPORTED WORK. MOVEABLE MARKERBOARD.



# I.T. ROOM + ELECTRICAL ROOM - PROGRAMMING



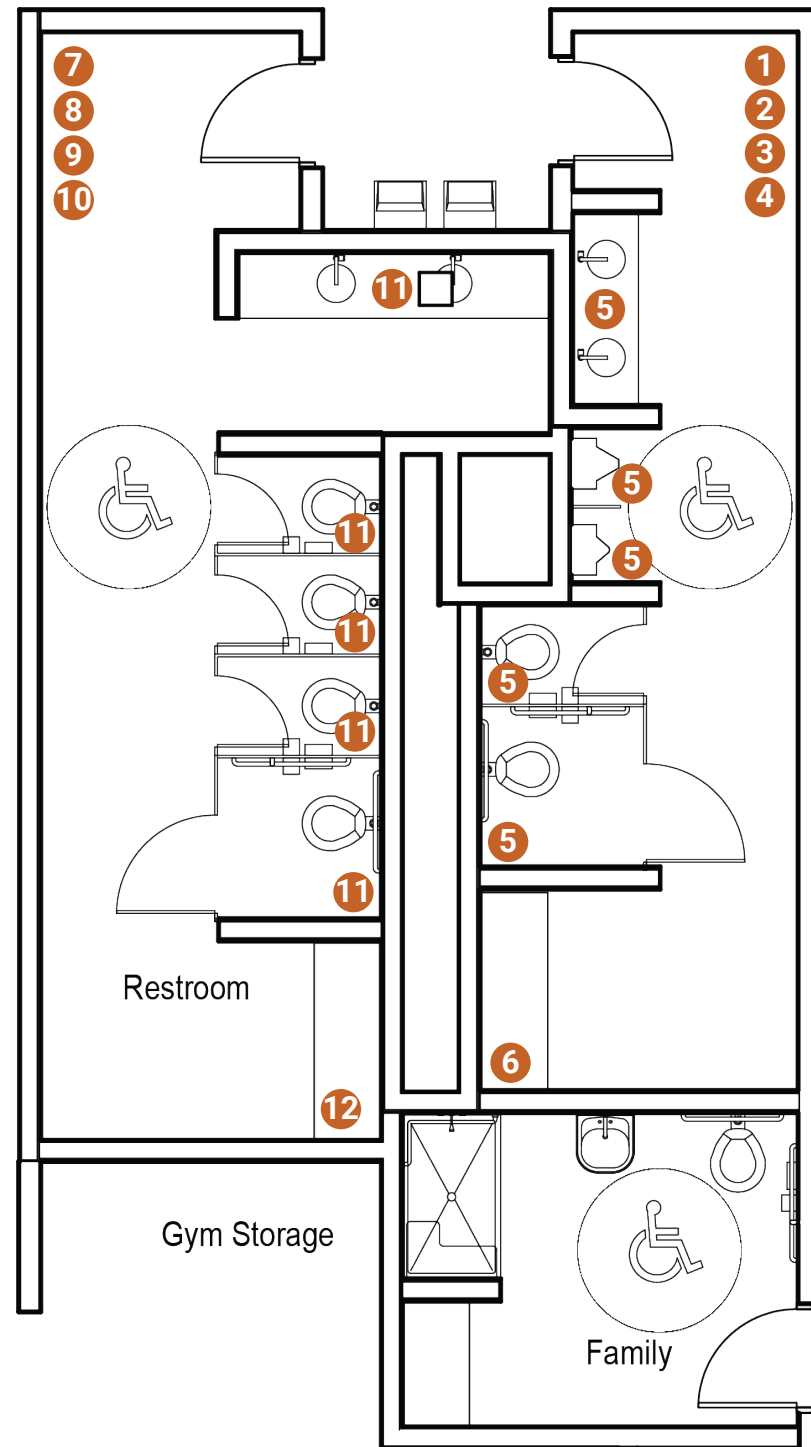
## I.T. ROOM

- 1 TYPICALLY 100 SF.  
CURRENTLY SHOWING 86 SF
- 2 SHOULD BE 10' X 10' PER OCTO.  
CURRENTLY SHOWING ROUGHLY 7' X 12'
- 3 STORAGE RACKS PER OCTO REQUIREMENTS.
- 4 SC FLOORING WITH CRB BASE.
- 5 SHOULD HAVE SEPARATE AIR CONDITIONING TO KEEP ROOM COOL.

## ELECTRICAL ROOM

- 6 TYPICALLY 60-80 SF.  
CURRENTLY SHOWING 78 SF AND 85 SF
- 7 SC FLOORING WITH CRB BASE.
- 8 EST CEILING.

# RESTROOMS - PROGRAMMING



## RESTROOM (MEN'S STANDARD)

- 1 SIZE DEPENDENT ON FACILITY.
- 2 SLIP-RESISTANT EPOXY FLOORING WITH EBC BASE.
- 3 HARD CLEANABLE CEILING.
- 4 TILE ON WALLS: RUNNING BOND THROUGHOUT.
- 5 SAME RESTROOM FIXTURES AND ACCESSORIES AS DESCRIBED IN LOCKER ROOM REQUIREMENTS.
- 6 SHOULD CONTAIN BABY CHANGING STATION.

## RESTROOM (WOMEN'S STANDARD)

- 7 SIZE DEPENDENT ON FACILITY.
- 8 SLIP-RESISTANT EPOXY FLOORING WITH EBC BASE.
- 9 HARD CLEANABLE CEILING.
- 10 TILE ON WALLS: RUNNING BOND THROUGHOUT.
- 11 SAME RESTROOM FIXTURES AND ACCESSORIES AS DESCRIBED IN LOCKER ROOM REQUIREMENTS.
- 12 SHOULD CONTAIN BABY CHANGING STATION.