

**Educational Specifications for
MacFarland Middle School
590 capacity**

May 2015

DRAFT

Educational Specifications for MacFarland Middle School

Introduction

This Educational Specification will be the basis for the design of a modernization of MacFarland Middle School for 6th through 8th grade students. MacFarland Middle School is proposed to be reopened as a neighborhood school with attendance boundaries and feeder schools that currently offer bi-lingual or advanced language programs. The Educational Specification familiarizes the members of the design team with the educational, extracurricular, administrative and operational space requirements of the school and site.

MacFarland Middle School was closed in 2013 due to under-enrollment and consolidated into nearby Pre-K – 8 education campuses: West, Truesdell, and Raymond. During and since the school's closing, there has been strong support from the community and feeder school families to re-open MacFarland as a stand-alone middle school in Ward 4. The site is adjacent to the global studies focused Roosevelt Senior High School, for which MacFarland will be the primary feeder school.

Background

Henry B. MacFarland JHS opened in 1923. Roosevelt High School was co-located on the same site in the mid 1930's. It is built of red brick and limestone in the Colonial Revival/Neo-Classical style similar to other schools built during this time and is identical to Langley JHS.

MacFarland is located at 4400 Iowa Ave. NW and is part of a large 36 acre public complex in the lower part of Ward 4 that includes DCPS public schools, public charter schools, the Petworth Public Library and the Upshur Recreation Center, which includes an outdoor pool, baseball field and other park and recreation amenities.

The Roosevelt/MacFarland Education Campus includes the Roosevelt stadium, MacFarland Middle School, two tennis courts, a basketball court, a large practice field, and parking for approximately 125 cars on the school sites () for Roosevelt and 65 for MacFarland. The site also includes access roads to Roosevelt HS off Iowa Avenue behind MacFarland.

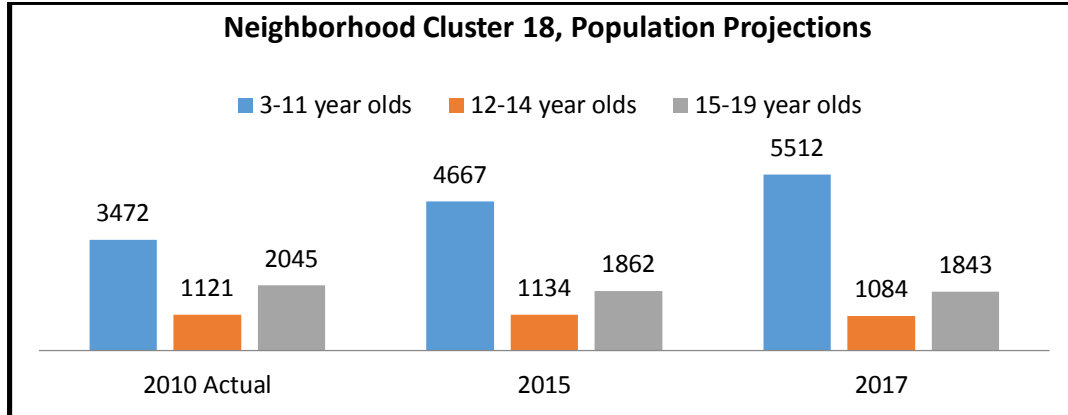
The Petworth neighborhood in Lower Ward 4 is rapidly developing and increasingly diverse; there are significant black, Hispanic, white, and African immigrant populations surrounding the MacFarland site. In addition to the significant population of Spanish speaking families in the MacFarland boundary, two of the six geographic feeder schools (Powell and Bruce Monroe Elementary Schools) are dual language English and Spanish. There are also four dual language elementary schools outside the boundary (Bancroft, Marie Reed, Cleveland, and Tyler) that will have the option to attend MacFarland.





Educational Specifications for MacFarland Middle School

Ward 4 has a large school age population with 11,319 children ages 4-17 at the time of the 2010 census. The Office of Planning projects significant increases in 3-11 year olds in Cluster 18—increasing from 3,472 in 2010 to 4,667 in 2015 and 5,512 in 2017.



Source: DC Office of Planning, Population Forecast by Neighborhood Cluster Final, January 25, 2013

There has been an increase in the PS-5/8th grade enrollment in the 6 elementary and PS-8th grade schools within a mile of Roosevelt.

Academic Programming

The proposed academic programming for MacFarland considers the school, along with Roosevelt High School, as part of a 6-12th grade vision for secondary education in lower Ward 4. In addition to the standard DCPS middle school offerings, MacFarland programming will include a global studies and world language focus for all students and a dual language track for qualified students. The school should prepare children to be informed and active global citizens.

The MacFarland building is an opportunity to integrate the global studies and world language focus into the school environment. This may include world language specific classrooms, labs, UN-style rooms where students can give and hear presentations, seminar rooms, office space for community partners, translation booths, and visual tributes to influential figures in international affairs.



Educational Specifications for MacFarland Middle School

Overview of Planning Concepts

Core Instructional Spaces

The basic organizational cluster for this school should consist of general purpose classrooms, science and a teacher work center. Each cluster would also contain a seminar room and resource room used by support educators. Student restrooms should be located within the cluster commons.

- Each house will have Math, Science, Language Arts, Social Studies, Resource Room, Teacher Work Center, as well as lockers, bathrooms, water fountains, and display cases.
- The core area will have Labs for world languages, visual and performing arts
- The activity areas will include a media center, dining, and a physical education space

Special Education

Special education facilities will be integrated throughout the school to support the concepts of inclusion and the specialized requirements for the students. Special attention will be given to accessibility of all facilities and an integrated learning program.

Instructional Methods

Instructional methods vary with grade level, but maintain continuity. Predominant elements include:

- Integrated learning, where content areas cross disciplines
- Flexible groupings
- Mentoring of older to younger students
- Extended day learning opportunities
- Parent involvement and volunteer activities

“Welcome Area”/Administration/Student Services

Immediately upon entry, visitors will be greeted in the “welcome area.” The administrative offices and guidance services will be located in this centralized area. The themes of international culture and languages should be integrated into the entry areas.

Media Center

School libraries are changing from being quiet book-lined spaces for research and contemplation to multi-media, interactive studios for social collaboration for faculty and students. It is one of the largest most flexible areas in the school, transforming itself from dozens of varied self-directed activities to a large group meeting and presentation space in a matter of minutes.

Often part of school commons, new media centers are more than 50 percent digital and offer both learning areas as well as production areas. The ideal media ‘commons’ might move from noisy to quiet - through a ‘café’ and mobile computing environment, to small group study areas, to individual study carrels or an on-line learning room. Visual access and varied seating is important to create a transparent and inviting culture.

On-line and independent learning applications are some of many new learning paths that schools are embracing. Virtual schools and ‘blended learning’ models are successfully reaching some students who need to learn at their own pace. As part of the media commons, the on-line learning center (computer lab) will have access to a variety of resources and expertise.



Educational Specifications for MacFarland Middle School

Visual and Performing Arts

The performing arts program may include instrumental music, drama, dance, and voice. The teaching spaces for this curriculum must be planned with particular attention to flexibility, room volume, and acoustics. MacFarland has an auditorium which is not part of the DCPS middle school requirements. The architect will consider options for using this space for a variety of activities.

The visual arts program will include an art room with associated kiln and outdoor patio. This space will contain sinks, furniture, and equipment to support both 2D and 3D instruction.

Physical Education

To support the middle school physical education program, a variety of indoor and outdoor areas are required. Indoor areas include a gymnasium, locker rooms, health classroom, and storage areas. All middle school students may be involved in physical education, which requires an adequate number of teaching stations.

The school currently has a 'boys' and a 'girls' gyms that do not comply with DCPS standards. The architect will explore options for a full court gymnasium.

Cafeteria

This area is planned to have multiple functions, which include student dining, assemblies, and community meetings. It is proposed, through creative design, that this area effectively house multiple functions.

It is desirable for students to have both inside and outside commons areas that offer places for socialization and 'play' near the cafeteria. Outside areas should include seating, shade, and a hard surface play area – all within easy observation of the school and staff. Inside areas may include recreational space, reading and homework areas, audio-video area, and different seating arrangements.

Corridors and Commons Spaces

The front entry lobby should be welcoming and inviting for students, staff, and visitors. Display systems should be provided for 2-dimensional and 3-dimensional student work and awards. Finishes should be durable and easy to maintain. The scale of all spaces should be child-friendly. Colors, artificial lighting, and natural daylighting should be managed artfully to create an environment that communicates that school is a very special place.

Furniture & Equipment

Classrooms vary in shape and size; therefore, the furniture should be flexible to accommodate a variety of classroom formats for both individual and group activities. Teachers and students should have storage space for personal belongings, papers, books, supplies, and teaching materials.

To the extent possible, movable furnishings will be used, rather than fixed casework, to provide flexibility for future reconfiguration.

Technology

The facility will contain the latest in technology and be wired for voice, data, and video throughout the building. The program design is intended to bring information to the desk of the student, and computer technology will



Educational Specifications for MacFarland Middle School

be distributed in every classroom. It is intended that access to technology will be seamless and pervasive throughout the building.

Every classroom will be wired for teacher audio enhancement. Research into this cutting-edge technology suggests that student learning can improve in classrooms where the teacher's voice is amplified and the classroom acoustics are designed to support voice clarity.

Handicapped Accessibility

The entire facility will be accessible for students, staff, and visitors. This will be accomplished through judicious use of ramping and elevators with sufficient internal clearances for circulation, convenient bus/van loading and unloading, and nearby handicapped parking spaces. All elements of the Americans with Disabilities Act must be complied with, including wayfinding and signage, appropriate use of textures, and universal accessibility of all indoor and outdoor school facilities.

Site

The site circulation will be organized for safety and efficiency. This will be accomplished through careful separation of vehicular and pedestrian traffic. Sufficient stacking space will be provided to prevent congestion of busy streets.

It will be important for the middle school and high school activities to be distinct. Both pedestrian and vehicular circulation have been concerns in the past and will require creative solutions to insure the safety of the students and staff.



Educational Specifications for MacFarland Middle School

Environmental Performance Criteria

Lighting Quality: Improving natural and artificial lighting in classrooms

	DESIGN PARAMETERS	PARAMETER NOTES
1) Controlled Natural Lighting (Glazing)	10 - 12% of floor S.F.	LEED & Green Globe
2) Artificial and natural Light	35-50 Foot-candles	IES

Environmental / Air Quality: Addressing temperature control, ventilation, air filtration, carbon dioxide levels, and HVAC background noise to ensure comfortable rooms.

	DESIGN PARAMETERS	PARAMETER NOTES
1) Winter Temperature	68.5 to 75.5 degrees	EPA 2000 & ASHRAE 55-04
Summer Temperature	74 to 80 degrees	
2) Humidity	30 % to 60% relative humidity	EPA 2000 & ASHRAE 55-04
3) Air Changes	6-10 per hour	ASHRAE
4) Outdoor Air Ventilation	10CFM per person	Plus 0.12 per SF of area
5) Air Filtration	MERV 13	LEED
	MERV 6 to 8	ASHRAE 52.2-2007 & 62.1-2007
6) Carbon Dioxide Levels	Below 700 PPM above outdoor air	ASHRAE 62.1-2007
7) HVAC Background Noise Level	RC(N) Mark II level of 37	ASHRAE Handbook Chapter 47

Acoustics: Limiting reverberation and background noise and improving sound isolation.

	DESIGN PARAMETERS	PARAMETER NOTES
1) Reverberation	.6 per second	(ANSI S12.60-2002)
2) Background Noise	45 dBA	(LEED)
3) Sound Isolation (Varies)	STC 45 between Classrooms	



Educational Specifications for MacFarland Middle School

Technology: Providing data connections for online learning resources, AV equipment, closed-circuit televisions, and a sound system with emergency capabilities.

DESIGN PARAMETERS		PARAMETER NOTES
1) Data / Computer Drops		Two for teacher (data and phone), five student computers, printer, two wireless access points for mobile carts
2) Audio / Video Equipment		
	Ceiling mounted LCD projector linked to Teacher's PC (data drop)	
	Video Format Screen	
	Digital DVD/VCR/Tuner	
	Sound Reinforcement	Amplifier, microphone, speakers
3) Clock		Synchronized with Bell system (data drop)
4) Sound System & Emergency Call-box		
	Ceiling or Wall Speaker	Class change bells, emergency announcements
5) CCTV Camera		
	Security, WebX conferencing, Distance Learning	

Sustainability: Build for energy efficiency

	DESIGN PARAMETERS	PARAMETER NOTES
1) Building EUI	20% below Baseline	ASHRAE 2010
2) Building Envelope	Meet or exceed R-value standards for building type	ASHRAE 90.1 2010
3) Water	Ultralow flow fixtures	ASHRAE 90.1 2010



Educational Specifications for MacFarland Middle School

Safety & Security

DCPS wants to maintain an inviting and de-institutionalized environment, while simultaneously providing a safe environment for students, staff, and community who use the facility and adjacent support services. The organization of a building will have a major impact on student behavior and safety concerns. Building security can be addressed in an active or a passive manner: active security is based on security systems; passive security is based on program design, building configuration, and community participation. Schools should be based on passive concepts with applied active concepts where necessary.

1. Building Layout

- Avoid blind spots, corners, and cubby holes
- Locate administrative and teacher preparation with good visual contact of major circulation areas (i.e., corridors, cafeteria, bus drop-off, parking)
- Develop spatial relationships that naturally transition from one location to another
- Locate toilets in close proximity to classrooms
- Design toilets to balance the need for privacy with the ability to supervise
- Locate areas likely to have significant community (after school) use close to parking and where these areas can be closed off from the rest of the building

2. Types of Building Materials

- Use durable wall surfaces that are easy to clean so graffiti can be removed
- Incorporate pitched roofs which inhibit roof entry and are aesthetically pleasing
- Operational part of windows on the ground floor should be in the upper portion to prevent access.
- Install non-slip floors and walk-off mats at point of entry

3. Uses of Technology

- Phones in every instructional and support area
- Building-wide all-call designed to be heard throughout the school and on the play fields when needed
- Motion or infra-red detectors, which can also conserve lighting costs
- Video cameras that are used for instructional purposes could also be used for security purposes during non-school hours
- Smoke and heat detectors located throughout the building



Educational Specifications for MacFarland Middle School

Energy and Environmental Design

The LEED certified school building should be used as a tool to teach environmental stewardship and awareness, while simultaneously providing an engaging environment for students, staff, and community who use the facility. The sustainable design and green features of the building can be addressed in an active or a passive manner: active interaction is based on digital displays, educational features and curriculum integrated learning about environmental issues; passive interaction is based on the program design, building configuration, green building features, and energy efficient building automation.

Passive Concepts

1. **Building Layout**
 - Concentrate daylight and views to the outside to areas of frequent human interaction (e.g. classrooms, cafeterias, media center, art rooms, music rooms) with passive solar design
 - Avoid excessive window areas in corridors, lobbies, hallways with no gathering opportunities (design for less than 45% of wall area)
2. **Types of Building Materials**
 - Use durable wall surfaces that are easy to clean
 - Design for cleanability with easy and safe access
 - Incorporate light colored pitched roofs to prevent heat gain and leakage
 - Install high performance walk-off mats at all points of entry
 - Design with noise minimization in mind
3. **Uses of Technology**
 - For instructional and administrative purposes, the new school should have extensive technology systems. These same infrastructures and technology components can be used to enhance the perception of the buildings environmental components. Digital display of buildings energy and water use at entrance and in cafeteria
 - Use only vacancy sensors for classrooms, cafeteria etc. to turn off (not on) lighting
 - Daylight sensors and dimming in larger areas (cafeteria, multi-purpose etc.)

Active Concepts

1. **Building Layout**
 - Provide signage to educate users about interior and exterior green building features throughout
 - Provide signage for user behavior modification, e.g. DCPS policy for thermostat settings, reminders to turn equipment off when not in use
 - Provide visitor map with floor plan for location and explanation of green building features
2. **Types of Building Materials**
 - Provide view window to inside of wall constructions and mechanical room
 - Provide materials with environmental message in selective areas, e.g. 100% recycled post consumer plastic toilet compartments, wheatboard cabinets, or furniture made of wood harvested from school site, and explain with signage.
3. **Uses of Technology**
 - For instructional and administrative purposes, the new school should have extensive technology systems. These same infrastructures and technology components can be used to enhance the perception of the buildings environmental components.
 - Green morning announcement with update on energy and water use
 - School based resource conservation program with frequent feedback to users



Educational Specifications for MacFarland Middle School

Outdoor classrooms

The intent of an outdoor classroom is to provide a flexible outdoor space to accommodate classes of the core academic disciplines. Activities may include science experiments, reading, journaling, instruction, club meetings, and community gatherings.

Whether the outside classroom is a building structure or simply a gather space with adequate shade will depend on the individual school site. Standards are under review and will be provided as the design progresses.

DCPS Recycles!

All DCPS schools are required to participate in the recycling program provided by DGS. All modernization projects must be designed to be consistent with the standardized supplies and services described at <http://dgs.dc.gov/page/healthy-schools>, with the expectation that in the near term future all schools will recycle and compost under this program.

Since each school is different, the DGS recycling program should be consulted regarding the following design considerations. In general, every modernization project is expected to provide

- **Adequate, accessible space for pick-up of all serviced containers**, usually to include (1) 8 cu yd dumpster OR compactor for paper and cardboard; (2-4) 96 gallon totes for glass/plastic/metals, and (3-10) 36 gallon totes for compostable waste; that is accessible to both front-end loaded and rear-end loaded trucks and allows custodian to easily transport totes to be picked up at ground level. The best configuration of containers will depend on the specifics of the hauling contract, the occupancy of the building and space restrictions. Dimensions of a standard 8 cu yd side loaded dumpster are 71"x 80"x76" (length x width x height).
- **Secure space for storing serviced containers and collection bins** with easy access for custodian to roll bins to/from pick up location, and distributed as necessary to facilitate flow of materials throughout the building to the pick-up location.
- **Cafeteria and kitchen layout** that supports a logical flow of materials including emptying liquids, sorting waste into three categories (landfill, recycling, compost), and tray return, while avoiding congestion; includes space for changeable signage and labels; is consistent with compost and recycling supplies provided by DGS for cafeterias (accommodates 32-gallon Brute-style bins with wheels); allows for easy access for cleaning by custodians (bottom of the sorting station is the floor); and has countertop holes that accommodate easy dumping of waste using both compostable and reusable trays.

The DGS recycling program provides a standardized set of recycling supplies, the number and type of bins to be determined according to building characteristics supplied.



Educational Specifications for MacFarland Middle School

Proposed Capacity

The proposed capacity is based on the current building square footage. It is an approximate and may be adjusted following schematic design.

Room Use			
Grade	Number of	Capacity (Program)	Total
	Classrooms		
Academic Classrooms (Language Arts, Math, Social Studies, World Language)	19	20	380
Science	5	20	100
Visual Art	1	20	20
Performing Arts	1	20	20
Physical Education/Health	2	20	40
SIFE*	1	10	10
Special Education	3	10	30
Total	32		600

*Students with Interrupted Formal Education

Building Space Summary

Space Summary	Total
Core Academic	30,950
Media Center	3,650
Visual and Performing Arts	7,680
Physical Education/Multi-purpose	9,870
Administration	4,980
Dining and Food Service	5,675
Maintenance & Custodial Services	920
Electrical, Toilets, Custodial Closets, Corridors	24,466
Total Net	88,191
Construction Factor[.082]	7,231
Total Gross	95,422

Outdoor Space Requirements

Environmental Classroom
Parking for approximately 60 cars



Educational Specifications for MacFarland Middle School

Academic Area Spaces

Spaces	Suggested			Comments
	Quantity	S.F.		
Core Academic Classrooms	24	800	19,200	Includes Health, special education, ESL
Science Labs	5	1,100	5,500	
Science Prep/Storage	3	varies	300	
Language/distance learning Center	1	1200	1,200	
Resource rooms	3	400	1,200	
ESL Suite				
- Resource rooms	2	400	950	
- Office	1	150		
Seminar Rooms	3	300	900	
Speech/OT/PT	1	250	250	
Student Services Offices	3	150	450	
Alternative Education	1	600	600	ISS
Teacher workrooms	2	200	400	
Total			30,950	

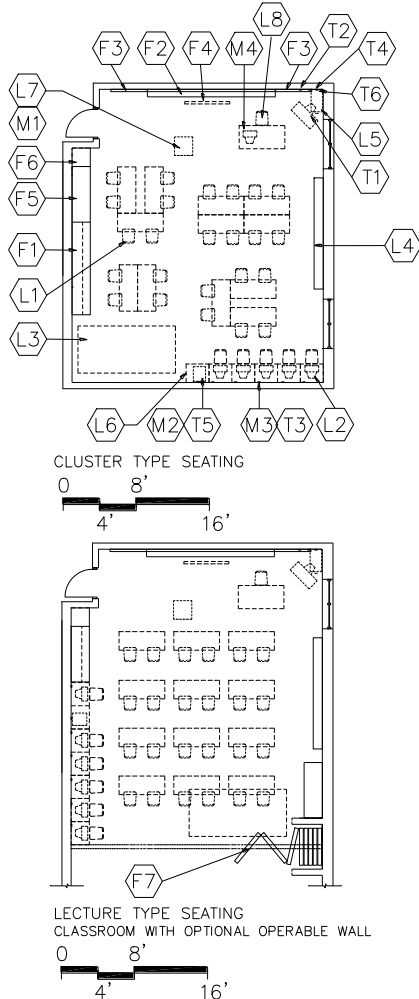
DRAFT



Educational Specifications for MacFarland Middle School

GRADES 6-8 CLASSROOM

M-AC-1



CAPACITY:

- 24 students
- Teacher
- Guest speakers/volunteers

SIZE:

- 800 SF

GOAL:

- To allow for space flexible enough to accommodate any of the core academic disciplines

PROGRAM ACTIVITIES:

- Large and small group instruction
- Hands-on activities
- Oral presentation
- Team teaching
- Computerized instruction

SPATIAL RELATIONSHIPS:

- Classroom are located by floor by grade
- Special education classrooms are integrated with their peers and should be outfitted similarly.
- The health classroom should be near the gymnasium

ENVIRONMENTAL CONSIDERATIONS:

- Comfortable rooms with pleasant décor that contribute to an atmosphere conducive to creativity
- Windows to provide natural light and egress
- Electrical outlets for equipment
- Uniform lighting
- Environmental sound control:
Wall minimum: STC 45
Ceiling minimum: CAC 35
Reverberation Time: .4-.6 seconds
- Window treatment to darken room for AV presentations
- Proportion classroom for effective viewing and listening from all areas of the classroom

NOTES:

1. Loose furnishings and features shown represent one of many possible arrangements.



Educational Specifications for MacFarland Middle School

GRADES 6-8 CLASSROOM

M-AC-1

	Spec. Ref.#		Spec. Ref.#
<u>Finishes¹:</u>		<u>Features¹:</u>	
Flooring:		Fixed Equipment:	
Rubber tile	096519	F1 Casework:	
		Base/wall cabinets	123200
Base:		F2 Marker board (2 walls)	101100
Resilient base	096519	16 LF primary/8 LF secondary	
		F3 Tack board flanking marker boards	101100
Ceiling: (9' high minimum)		Plus two (2) parallel rows of continuous	
Suspended, acoustical	095113	tack strips on all available walls (4 LF or	
		longer) at 48" AFF	
Walls:		F4 Manual projection screen (60"X60")	115213 ²
Painted concrete masonry units or dry wall		F5 Casework:	
042000 / 099123		Tall storage cabinets	123200
		F6 Casework:	
<u>Loose Furnishings:</u>		Wardrobe (18X18)	123200
L1 24-28 flat top desks/chairs		<u>Fire Suppression:</u>	
L4 Adjustable height bookshelves (24 LF)		Fire suppression system	211000
L5 Four-drawer file cabinet			
L8 Teacher workstation and chair		<u>Plumbing:</u>	
		Sink in one classroom for Health classroom	
		only	
<u>Miscellaneous:</u>		<u>HVAC:</u>	
M1 Projection device on cart or electronic		Supply/return air system	Div. 23
white board		Independent temperature	
M3 3 computers for student use		control	
M4 Computer for teacher use		<u>Electrical:</u>	
		Duplex receptacles	262726
<u>Communications:</u>	Div. 27	3 per primary teaching wall	
Single point 'face plate' near teachers work		2 per other walls	262726
station to include:		TVSS protected quad receptacle	
Voice, data, VGA , audio enhancement,		adjacent to each data port and	
and HDMI		video port	262726
Additional ports:		Multilevel switching	262726
Printer		Clock	275313
Cable/MATV port		Central sound system	275116
3 data ports for student use			
Electronic white board		<u>Electronic Safety and Security:</u>	
Clock/PA		Life safety devices per code	283111
2 wireless			

NOTES:

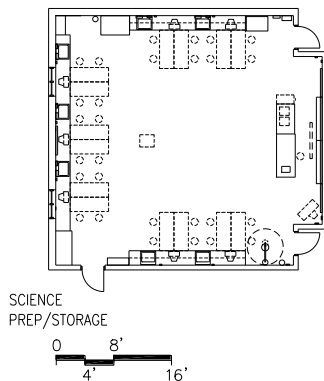
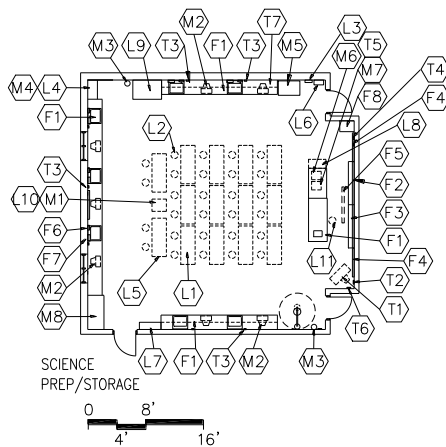
1. Finishes/Features: Refer to Chapter 8 for specification references.
2. Delete where a digital white board is installed.



Educational Specifications for MacFarland Middle School

SCIENCE CLASSROOM

M-AC-2



CAPACITY:

- 24 students
- Teachers
- Staff

SIZE:

- 1000-1100 SF

SPATIAL RELATIONSHIPS:

- Near access to outdoors
- Adjacent and access to Science Prep/Storage
- Near elevator if split between floors

GOALS:

- Flexible space and layout to support delivery of entire science curriculum in any lab
- To help students become reasonable caretakers of their bodies and environment
- To help students become effective team members
- To help students become critical thinkers, problem solvers, and lifelong learners
- To help students become aware of the physical and biological world

PROGRAM ACTIVITIES:

- Large and small group instruction
- Hands-on activities
- Team teaching
- Data collection and analysis
- Oral presentations
- Computer simulations

ENVIRONMENTAL CONSIDERATIONS:

- Consider future technology needs; build-in flexibility to retain options
- Uniform lighting
- Rooms designed for ease of movement. Students need to be able to move around the labs with chemicals, etc., in a safe way. Rooms will be used for small group work as well as large group instruction
- Lab table tops, floors, etc., need to be resistant to acids, heat, spills, etc.
- OSHA requirements maintained
- Environmental sound control:
 - Wall minimum: STC 45
 - Ceiling minimum: CAC 35
 - Reverberation Time: .4-.6 seconds
- Electrical outlets for equipment
- Windows to provide natural light and egress
- Window treatment to darken room for AV presentations
- Adequate ventilation
- Proportion classroom for effective viewing and listening from all areas of the classroom
- Auditory privacy

NOTES:

1. Loose furnishings and features shown represent one of many possible arrangements.



Educational Specifications for MacFarland Middle School

SCIENCE CLASSROOM

M-AC-2

	Spec. Ref.#		Spec. Ref.#
<u>Finishes¹:</u>		<u>Features¹:</u>	
<u>Flooring:</u>		<u>Fixed Equipment:</u>	
Quartz tile	096518	F1 Science Casework:	123200
<u>Base:</u>		Base cabinets and shelving	
Resilient base	096519	Tall cabinets for class storage	
<u>Ceiling: (9' high minimum)</u>		Teacher demonstration table	
Suspended, acoustical	095113	F2 Marker board (8 LF)	101100
<u>Walls:</u>		F3 Marker board with grid (8 LF)	101100
Painted concrete masonry units or dry wall	042000 / 099123	F4 Tack board (8 LF)	101100
<u>Loose Furnishings:</u>		F5 Manual projection screen	115213
L1 12 two-person adjustable height tables		F6 Soap dispenser	102800
L2 24 adjustable height stools (non-swivel)		F7 Towel dispenser	102800
L3 Fire blanket		F8 Casework: Wardrobe	123200
L4 Microscopes (in cabinets)		<u>Fire Suppression:</u>	
L6 Goggle storage and sanitizer cabinet		Fire suppression system	211000
L7 Adjustable height bookshelves (24 LF)		<u>Plumbing:</u>	
L8 Four-drawer file cabinet		Plumbing connections (6 sinks)	15410
L9 Portable fume hood (one per school)		All utilities for teacher demonstration table	
L10 Multimedia cart for teacher use		<u>HVAC:</u>	
L11 Adjustable height stool for teacher		Supply/return air system	Div. 23
<u>Miscellaneous:</u>		Independent temperature control	
M1 Projection device on cart or electronic white board		<u>Electrical:</u>	
M2 Portable computers for student use		Duplex receptacles	262726
M3 Fire extinguisher		3 per primary teaching wall	
M5 Digital science instrumentation		2 per other walls	
M9 Computer for teacher use		1 at each lab station	
<u>Communications:</u>		TVSS protected quad receptacle adjacent to each data port and video port	262726
Single point 'face plate' near teachers work station to include:	Div. 27	Multilevel switching	262726
Voice, data, VGA , audio enhancement, and HDMI		Fluorescent lighting	265100
Additional ports:		Clock	275313
3 data ports for student use		Central sound system	275116
Electronic white board		Quad outlet at teacher demo.	262726
Clock/PA		<u>Electronic Safety and Security:</u>	
2 wireless		Life safety devices per code	283111

NOTES:

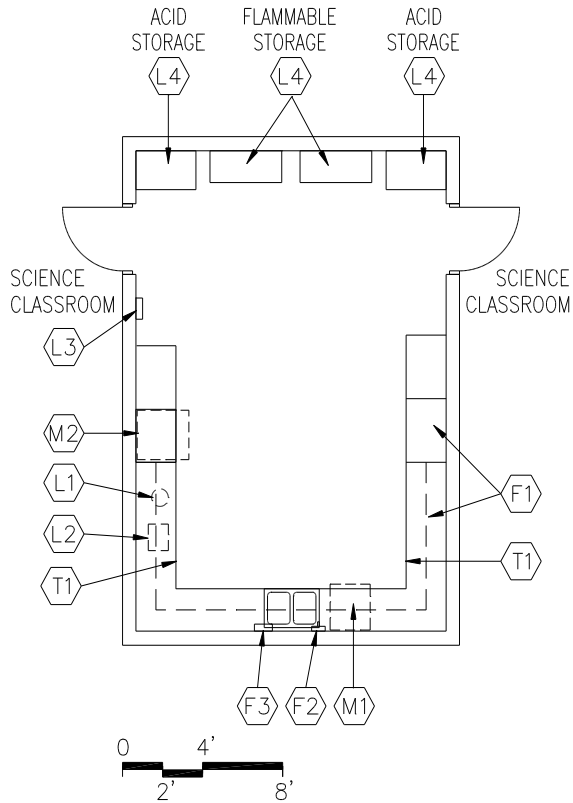
1. Finishes/Features: Refer to Chapter 8 for specification references.



Educational Specifications for MacFarland Middle School

SCIENCE PREP / STORAGE

M-AC-3



GOAL:

- To allow for lab preparation

PROGRAM ACTIVITIES:

- General lab preparation
- Set-up experiments
- Store equipment

SPATIAL RELATIONSHIPS:

- Adjacent and access to two Science Classrooms
- Near Workroom

ENVIRONMENTAL CONSIDERATIONS:

- Uniform lighting
- Environmental sound control:
Wall minimum: STC 45
Ceiling minimum: CAC 35
- Electrical outlets for equipment
- Exhaust system

CAPACITY:

- 1-2 staff members
- Students assistants

SIZE:

- Varies, see table

ANCILLARY SPACES:

- Science Classrooms (M-AC-2)

NOTES:

1. Loose furnishings and features shown represent one of many possible arrangements.



Educational Specifications for MacFarland Middle School

SCIENCE PREP / STORAGE
M-AC-3

	Spec. Ref.#		Spec. Ref.#
<u>Finishes¹:</u>		<u>Features¹:</u>	
Flooring:		Fixed Equipment:	
Quartz tile	096618	F1 Science Casework: Base/wall cabinets	123200
Base:		F2 Soap dispenser	102800
Resilient base	096519	F3 Towel dispenser	102800
Ceiling:		<u>Fire Suppression:</u>	Div. 21
Suspended, acoustical	095113	Fire suppression system	
Walls:		<u>Plumbing:</u> Div. 22	
Painted concrete masonry units	042000 / 099123	Plumbing connections	
		Hook-up for ice maker	
		Sink	
<u>Loose Furnishings:</u>		<u>HVAC:</u> Div. 23	
L1 Autoclave (one per school)		Exhaust air system	
L2 Distiller (one per school)		Supply/return air system	
L3 Fire blanket		<u>Electrical:</u> Div. 26	
L4 Chemical storage cabinets		Duplex receptacles	
		in race way above countertop	
<u>Communications:</u>	Div. 27	TVSS Protected quad receptacle	
T1 2 data ports		adjacent to each data port	
In apron below countertop		Single-level switching	
		<u>Electronic Safety and Security:</u>	Div. 28
		Life safety devices per code	
		<u>Miscellaneous:</u>	
		M1 Dishwasher	
		M2 Refrigerator with ice maker	

NOTES:

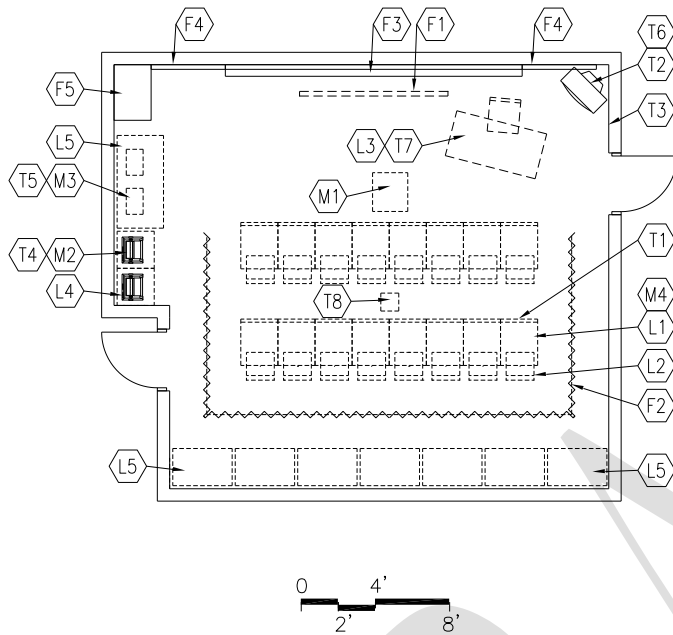
1. Finishes/Features: Refer to Chapter 8 for specification references.



Educational Specifications for MacFarland Middle School

LANGUAGE/DISTANCE LEARNING CENTER

H-AC-23



CAPACITY:

- 40 students
- 2 teachers

GOAL:

- To provide an on-line lab for language learning
- To provide social setting for dual language conversation
- To provide sound proof, properly lighted room for audio-video conferencing

PROGRAM ACTIVITIES:

- Individual and small group work
- Distance learning
- Teleconferencing

SPATIAL RELATIONSHIPS:

- Located within Core Academic Area
- Proportion room for simultaneous activities

ENVIRONMENTAL CONSIDERATIONS:

- Special lighting attached to grid in ceiling 1/2 of the room
- Acoustics and sound control are very important for video production
- Environmental sound control:
Wall minimum: STC 45
Ceiling minimum: CAC 35
- Adequate ventilation for heat build-up from computers and lighting
- Proportion classroom for effective viewing and listening from all areas

Features¹:

Fixed Equipment:

- F1 Large video monitors (2) 115213
- F2 Curtains (to separate room in half) 116143
- F3 Marker board (16 LF) - not on same wall as the monitor)
- F4 Tack board (8 FF)
- F5 Casework: Technology counter with some built-in storage to double as recording stations on two walls
Kitchenette with refrigerator, microwave, sink, and stove

Loose Furnishings:

- L1/4 Desks and tables for a variety of room configurations
- L2 30-36 chairs (some swivel on castors)
- L3 Teacher desk and chair
- L4 Printer table
2 mobile waist-high dividers w/ storage
Book shelves (16' linear)
Podium w/ portable speakers

Communications:

- T1 Vigorous wireless ports
- T3 1 voice port and phone
- T4 Data ports for printer
- T6 Cable/MATV port (input/output)
- T7 1 data port for teacher use
- T8 Audio-video input and output to monitors

Misc

Teleconferencing equipment (cameras, mics)

Spec.
Ref.#

Div. 27

NOTES:

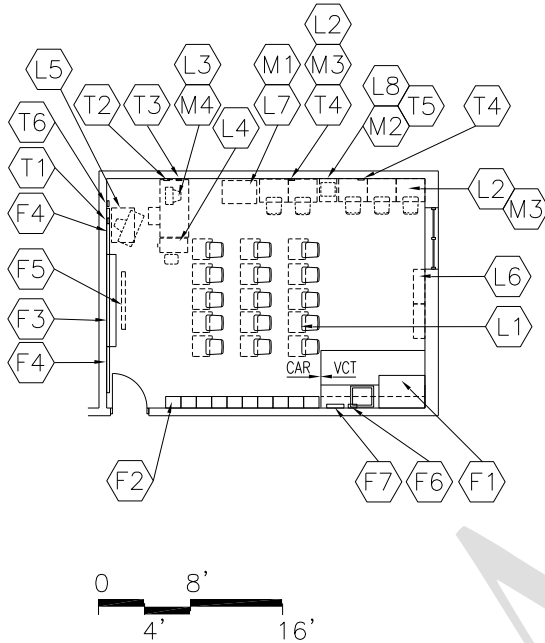
1. Loose furnishings and features represent one of many possible arrangements.



Educational Specifications for MacFarland Middle School

RESOURCE CLASSROOM

E-ACA-4



CAPACITY:

- 10-15 students
- 1-2 staff members

SIZE:

- Varies, see table

ANCILLARY SPACES:

N/A

GOAL:

- To provide a safe and comfortable learning environment for students with unique learning challenges

PROGRAM ACTIVITIES:

- Small group work
- Independent instruction and work

SPATIAL RELATIONSHIPS:

- Located within Academic Core areas
- Ingress/egress to the building which allows for special transportation pick-ups

ENVIRONMENTAL CONSIDERATIONS:

- Uniform lighting
- Windows to provide natural light and egress
- Environmental sound control:
Wall minimum: STC 45
Ceiling minimum: CAC 35
Reverberation Time: .4-.6 seconds
- Electrical outlets for equipment
- Proportion classroom for effective viewing and listening from all areas of the classroom
- Window treatment to darken room for AV presentation

NOTES:

1. Loose furnishings and features shown represent one of many possible arrangements.



Educational Specifications for MacFarland Middle School

RESOURCE CLASSROOM

E-ACA-4

	Spec. Ref.#		Spec. Ref.#
<u>Finishes¹:</u>		<u>Features¹:</u>	
Flooring:		Fixed Equipment:	
Rubber tile	096519	F1 Casework:	123200
		Base/wall cabinets and shelving	
Base:		Paper storage cabinets	
Resilient base	096519	F3 Marker board (8 LF)	101100
		F4 Tack board (8 LF minimum)	101100
Ceiling (9' high minimum):		F5 Manual projection screen	115213
Suspended, acoustical	095113	F8 Casework:	
		Wardrobe	123200
Walls:		<u>Fire Suppression:</u>	Div. 21
Painted concrete masonry units or dry wall		Fire suppression system	
042000/099123			
<u>Loose Furnishings:</u>		<u>HVAC:</u>	Div. 23
L1 10-12 student desks or 2-3 work tables		Supply/return air system	
10-12 chairs		Independent temperature	
L2 3 computer workstations and chairs		Control	
L3 Teacher workstation and chair		<u>Electrical:</u>	Div. 26
L4 Four-drawer file cabinet		Duplex receptacles	
L5 Mobile shelving		3 per primary teaching wall	
		2 per other walls	
<u>Communications:</u>	Div. 27	TVSS protected quad receptacle	
Single point 'face plate' near teachers work		adjacent to each data and	
station to include:		video port	
Voice, data, VGA , audio enhancement,		Multilevel switching	
and HDMI		Clock	
Additional ports:		Central sound system	
3 data ports for student use		<u>Electronic Safety and Security:</u>	Div. 28
Electronic white board		Life safety devices per code	
Clock/PA			
wireless			
<u>Miscellaneous:</u>			
M3 2-3 computers for student use			
M4 Computer for teacher use			

NOTES:

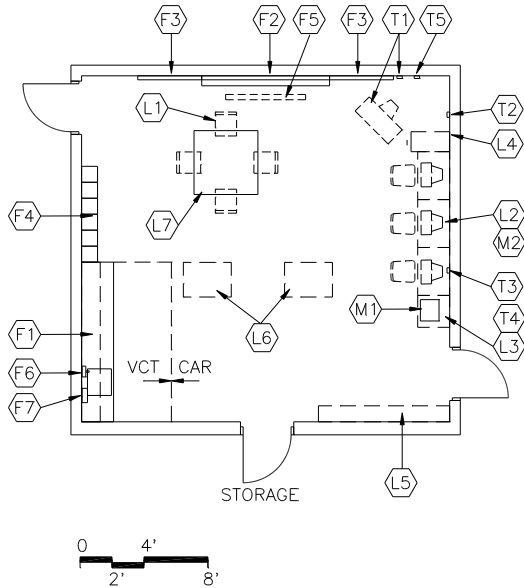
1. Finishes/Features: Refer to Chapter 8 for specification references.



Educational Specifications for MacFarland Middle School

SPEECH / OCCUPATIONAL / PHYSICAL THERAPY

M-AC-13



CAPACITY:

- Up to 3 students
- Up to 2 staff

SIZE:

- 250 SF

GOAL:

- To provide private functional mobility training for students

PROGRAM ACTIVITIES:

- Speech therapy
- Exercise
- Assistive technology evaluation
- Occupational and Physical Therapy

SPATIAL RELATIONSHIPS:

- Near Special Needs Classrooms

ENVIRONMENTAL CONSIDERATIONS:

- Uniform lighting
- Environmental sound control:
Wall minimum: STC 45
Ceiling minimum: CAC 35
- Adequate ventilation
- Electrical outlets for equipment
- Wheelchair accessibility
- Reinforce structure to support equipment such as a trapeze
- Windows to provide natural light, desirable; provide treatment to darken if windows are provided
- Auditory privacy

NOTES:

1. Loose furnishings and features shown represent one of many possible arrangements.



Educational Specifications for MacFarland Middle School

SPEECH / OCCUPATIONAL / PHYSICAL THERAPY
M-AC-13

	Spec. Ref.#		Spec. Ref.#
<u>Finishes¹:</u>		<u>Features¹:</u>	
Flooring:		Fixed Equipment:	
Resilient tile		F1 Casework:	123200
		Wall/base cabinets with shelving	
Base:		F2 Marker board (8 LF)	101100
Resilient base	096519	F3 Tack board (8 LF)	101100
		F6 Soap dispenser	102800
Ceiling:		F7 Towel dispenser	102800
Suspended, acoustical	095113		
Walls:		<u>Fire Suppression:</u>	Div. 21
Painted concrete masonry units		Fire suppression system	
042000 / 099123			
<u>Loose Furnishings:</u>		<u>Plumbing:</u> Div. 22	
L1 4 chairs		Plumbing connections	
L2 Computer workstation furniture		Sink with drinking fountain (optional)	
L4 Four-drawer file cabinet			
L5 Adjustable height bookshelves (12 LF)		<u>HVAC:</u> Div. 23	
L6 Therapy equipment		Supply/return air system	
L7 Work table			
<u>Communications:</u>	Div. 27	<u>Electrical:</u> Div. 26	
T2 Voice port and phone		Duplex receptacles	
T3 2 data ports near workstations		TVSS protected quad receptacle	
		adjacent to each data and	
		video port	
		Multilevel switching	
		Fluorescent lighting	
		Clock	
		Central sound system	
		<u>Electronic Safety and Security:</u>	Div. 28
		Life safety devices per code	

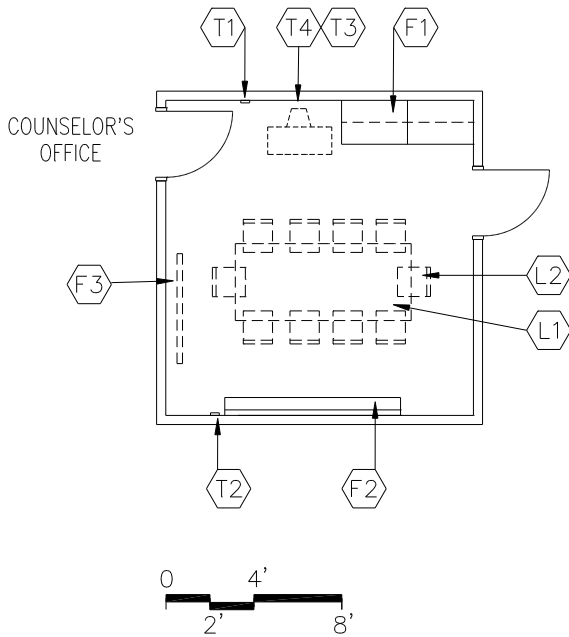
NOTES:

1. Finishes/Features: Refer to Chapter 8 for specification references.



Educational Specifications for MacFarland Middle School

SEMINAR ROOMS



CAPACITY:

- Staff
- Students
- Parents

GOAL:

- To provide a place for students to work in small groups

PROGRAM ACTIVITY:

- Conferences with staff, students, parents, and visitors

ENVIRONMENTAL CONSIDERATIONS:

- Uniform lighting
- Environmental sound control:
Wall minimum: STC 45
Ceiling minimum: CAC 35
- Electrical outlets for portable equipment
- Auditory privacy
- Windows into the corridor/classrooms

Features¹:

Fixed Equipment:

F1	Casework: Base/wall cabinets (6 LF)	123200
F2	Marker board (one wall)	101100
F3	Manual projection screen	

Loose Furnishings:

- L1 Conference table
- L2 10 chairs

Electrical: Div. 26

- Duplex receptacles
- TVSS protected quad receptacle
- Adjacent to each data port
- Multilevel switching
- Duplex receptacles
- Clock
- Central sound system

Communications:

- T1 Voice port and phone
- T2 Data port

Spec.
Ref.#

Div. 27

NOTES:

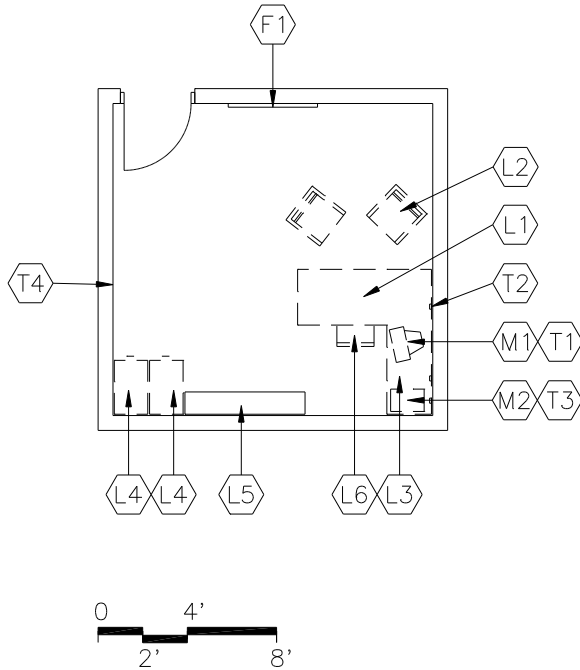
1. Loose furnishings and features shown represent one of many possible arrangements.



Educational Specifications for MacFarland Middle School

STUDENT SERVICES OFFICE

M-AC-10



CAPACITY:

- Counselors
- Students and parents
- Staff
- Teachers
- ESL instructors
- Psychologists
- Social workers

SIZE:

- Varies, see table

ANCILLARY SPACES:

- Staff Restrooms (M-BS-10)

GOAL:

- To provide counseling and other student support services that are easily accessible to students, parents, staff, and the community

PROGRAM ACTIVITIES:

- Counseling for parents and students
- Administrative paperwork
- Environment and orientation of new students
- Office space for itinerant staff

SPATIAL RELATIONSHIP:

- Within Academic Core areas

ENVIRONMENTAL CONSIDERATIONS:

- Uniform lighting
- Environmental sound control:
Wall minimum: STC 45
Ceiling minimum: CAC 35
- Windows to provide natural light, desirable
- Auditory privacy

NOTES:

1. Loose furnishings and features shown represent one of many possible arrangements.



Educational Specifications for MacFarland Middle School

STUDENT SERVICES OFFICE

M-AC-10

<u>Finishes¹:</u>	<u>Spec. Ref.#</u>	<u>Features¹:</u>	<u>Spec. Ref.#</u>
Flooring:		Fixed Equipment:	
Resilient tile flooring	096519	F1 Tack board (4 LF)	101100
Base:		<u>Fire Suppression:</u>	Div. 21
Resilient base	096519	Fire suppression system	
Ceiling:		<u>Plumbing:</u>	
Suspended, acoustical	095113	N/A	
Walls:		<u>HVAC:</u>	Div. 23
Painted gypsum wallboard over metal studs	092116 / 099123	Supply/return air system	
<u>Loose Furnishings:</u>		<u>Electrical:</u>	Div. 26
L1 Desk		Duplex receptacles	
L2 Visitor chairs		TVSS protected quad receptacle adjacent to each data port	
L3 Computer workstation		Single-level switching	
L4 Four-drawer file cabinets		Clock	
L5 Adjustable height bookshelves (12 LF)		Central sound system	
L6 Ergonomic task chair		<u>Communications:</u>	Div. 27
		T1 Data port near workstation	
		T2 Voice port and phone	
		T3 Data port for printer	
		<u>Electronic Safety and Security:</u>	Div. 28
		Life safety devices per code	

NOTES:

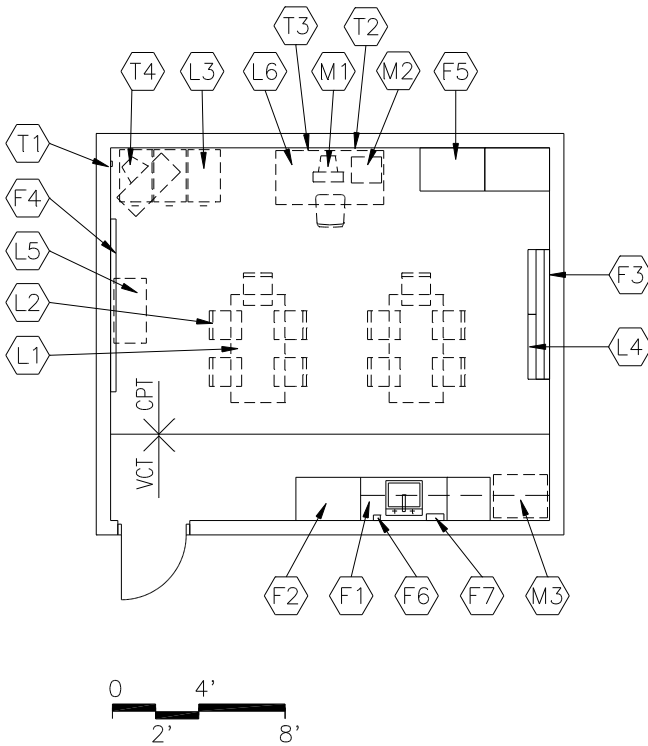
1. Finishes/Features: Refer to Chapter 8 for specification references.



Educational Specifications for MacFarland Middle School

TEACHERS' WORK CENTER

M-AD-12



Loose Furnishings:

- L1 2-3 tables (36" x 72")
- L2 15 chairs
- L3 3, four-drawer file cabinet
- L4 Adjustable height bookshelves (12 LF)

Communications:

- T2 Voice port and phone
- T3 1 data port
- T4 Video port, monitor, VCR/DVD, and bracket
- Network Printer port
- Conference room display device

GOALS:

- To provide a place for collaboration
- To provide a space for floating staff to work

PROGRAM ACTIVITIES:

- Small group meetings
- Work area
- Storage

SPATIAL RELATIONSHIP:

- Near Restrooms
- One per floor (not on same floor as staff lounge)

ENVIRONMENTAL CONSIDERATIONS:

- Electrical outlets for equipment
- Lighting appropriate to task
- Environmental sound control:
Wall minimum: STC 45
Ceiling minimum: CAC 35
- Windows to provide natural light, desirable

Features¹:

Fixed Equipment:

	Spec. Ref.#
F1 Casework: Base cabinets (w/sink) Wall cabinets/shelving	123200
F2 Tack board (4 LF)	101100
F4 Casework: Tall cabinet	123200
F6 Towel Dispenser	
F7 Soap dispenser	102800

NOTES:

1. Loose furnishings and features shown represent one of many possible arrangements.



Educational Specifications for MacFarland Middle School

Media Center Space Requirements

Spaces	Suggested			Comments
	Qty.	S.F.		
Reading/Circulation/Meeting Area	1	1,800	1,800	
Office/Workroom/storage	1	450	450	
Storage	1	150	150	
Media Production	1	400	400	(optional)
Computer Lab	1	850	850	
Total			3,650	

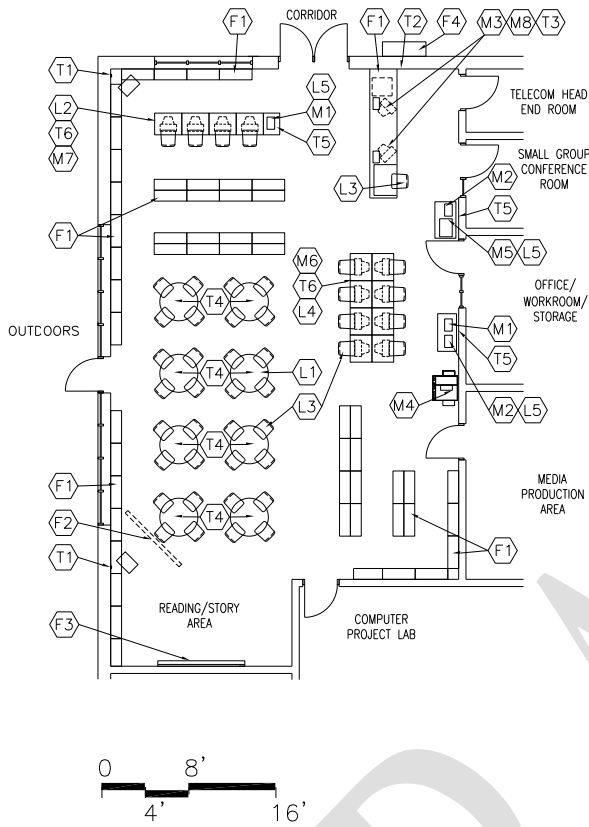
DRAFT



Educational Specifications for MacFarland Middle School

READING / LEARNING / CIRCULATION ROOM

M-MC-1



CAPACITY:

- Class of Students
- Up to 10 students for open reading
- Up to 12 individuals for research
- Media specialist
- Guest speakers - up to 100 participants

GOAL:

- To provide students, staff, and community with access to information and quiet study areas

PROGRAM ACTIVITIES:

- Reading
- Circulation of materials and resources including online catalogs
- Large group and small group instruction
- Provide meeting areas for community staff and parents
- Research

SPATIAL RELATIONSHIPS:

- Circulation area located close to entrance/exit
- Reference/professional/periodical areas located close to entrance and circulation
- Two catalog station areas centrally located

ENVIRONMENTAL CONSIDERATIONS:

- Recessed floor, wall electrical outlets in floor at tables
- Flush covers for floor outlets
- Adequate ventilation
- Lighting appropriate to task with switches to dim separate zones of media center
- Ceiling mounts and appropriate wiring for LCD projector
- Environmental sound control:
Wall minimum: STC 45
Ceiling minimum: CAC 35
- Higher than normal ceiling height
- Electrical outlets at entrance for future security system
- Electrical outlets at all column locations
- Windows to provide natural light
- Security of school when center is in use after school hours
- Ceiling height in proportion to room dimensions
- Open flow for traffic in reference/professional/periodical areas
- Window treatment to darken room for AV presentation
- Auditory privacy

NOTES:

1. Loose furnishings and features shown represent one of many possible arrangements.



Educational Specifications for MacFarland Middle School

READING / LEARNING / CIRCULATION ROOM

M-MC-1

	Spec. Ref.#		Spec. Ref.#
<u>Finishes¹:</u>		<u>Features¹:</u>	
Flooring:		Fixed Equipment:	
Carpet	096816	F1 Library casework for 1,000 linear ft. per 15,000 vol.; Utilize 72" H shelving on perimeter as much as possible. Free-standing shelving shall not exceed 42" H on castors	
Base:		Display case	123559
Resilient base	096519	F3 Interactive board	
Ceiling:		F2 Marker board (16 LF)	
Suspended, acoustical	095113	Tackboard (8 LF)	
Walls:		<u>Fire Suppression:</u>	Div. 21
Painted concrete masonry units	042000 / 099123	Fire suppression system	
<u>Loose Furnishings:</u>		<u>HVAC:</u>	Div. 23
L1 6 six-person tables or 8 four person		Supply/return air system	
L2 Automated card catalog stations		Independent temperature control	
L3 50 chairs		<u>Electrical:</u>	Div. 26
L4 12 seated reference stations		Duplex receptacles	
L5 4 lounge chairs		TVSS protected quad receptacle adjacent to each data and video port	
L6 2 end tables		Multilevel switching	
L7 Printer table		Fluorescent lighting	
<u>Communications:</u>	Div. 27	Security System	
T1 2 video port		Central sound system	
T2 Voice port and phone		<u>Electronic Safety and Security:</u>	Div. 28
T3 2 data ports at circulation desk		Life safety devices per code	
T5 data port for printer		<u>Miscellaneous:</u>	
T6 data port for automated data card catalog		M1 Printer	
T7 12 data ports for reference		M2 Scanner	
T8 2 bar code readers		M3 Copier	
T9 2 wireless access points		M5 12 computers for student use	

NOTES:

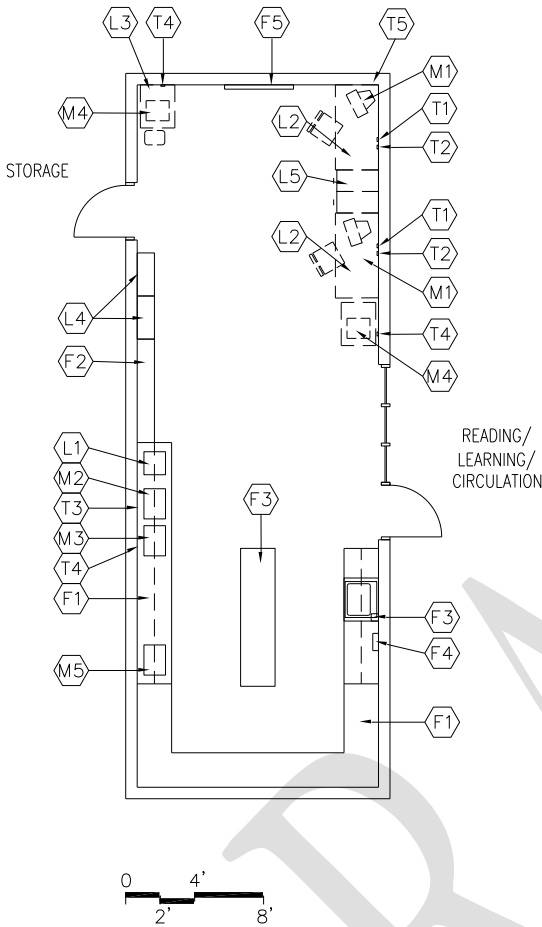
1. Finishes/Features: Refer to Chapter 8 for specification references.



Educational Specifications for MacFarland Middle School

COMBINED OFFICE / WORKROOM

M-MC-6



GOAL:

- To provide space for the management and organization of media resources and processing of incoming materials

PROGRAM ACTIVITIES:

- Receive, process, and duplicate library materials
- Scanning
- Repair damaged or worn materials
- Digitizing
- Media distribution

SPATIAL RELATIONSHIPS:

- Adjacent and access to Reading/Learning/Circulation Room
- Adjacent and access to Storage

ENVIRONMENTAL CONSIDERATIONS:

- Uniform lighting
- Environmental sound control:
Wall minimum: STC 45
Ceiling minimum: CAC 35
- Electrical outlets for equipment
- Locate behind circulation desk
- Visual access to Reading/Learning/Circulation Room

CAPACITY:

- Media specialist
- Technology aide

SIZE:

- Varies, see table

ANCILLARY SPACES:

- Reading/Learning/Circulation Room (M-MC-1)
- Storage (M-MC-5)

NOTES:

1. Loose furnishings and features shown represent one of many possible arrangements.



Educational Specifications for MacFarland Middle School

COMBINED OFFICE / WORKROOM

M-MC-6

	Spec.		Spec.
<u>Finishes</u> ¹ :	<u>Ref.</u>	<u>Features</u> ¹ :	<u>Ref.#</u>
	<u>#</u>		
Flooring:		Fixed Equipment:	
Resilient tile flooring	096519	F1 Casework:	123200
		Base/wall cabinets	
		Tall storage	
Base:		F2 Storage shelving:	105613
Resilient base	096519	Video tapes	
Ceiling:		F3 Soap dispenser	102800
Suspended, acoustical	095113	F4 Towel dispenser	102800
		F5 Tack board (4 LF)	101100
Walls:		<u>Fire Suppression:</u>	Div. 21
Painted concrete masonry units		Fire suppression system	
042000 / 099123		<u>Plumbing:</u>	Div. 22
<u>Loose Furnishings:</u>		Plumbing connections	
L1 Paper cutter		Sink	
L2 Computer workstation and ergonomic task chair		<u>HVAC:</u>	Div. 23
L4 Adjustable height bookshelves		Supply/return air system	
L5 2, four drawer file cabinets		Independent temperature control	
<u>Miscellaneous:</u>		<u>Electrical:</u>	Div. 26
M1 Computer		Duplex receptacles	
M3 Fax machine		Single-level switching	
M5 Video distribution equipment		TVSS protected quad receptacle adjacent to each data port	
		Fluorescent lighting	
		Clock	
		Central sound system	
		<u>Communications</u> ² :	Div. 27
		T1 Voice port and phone	
		T2 Data port	
		T4 Fax port	
		<u>Electronic Safety and Security:</u>	Div. 28
		Life safety devices per code	

NOTES:

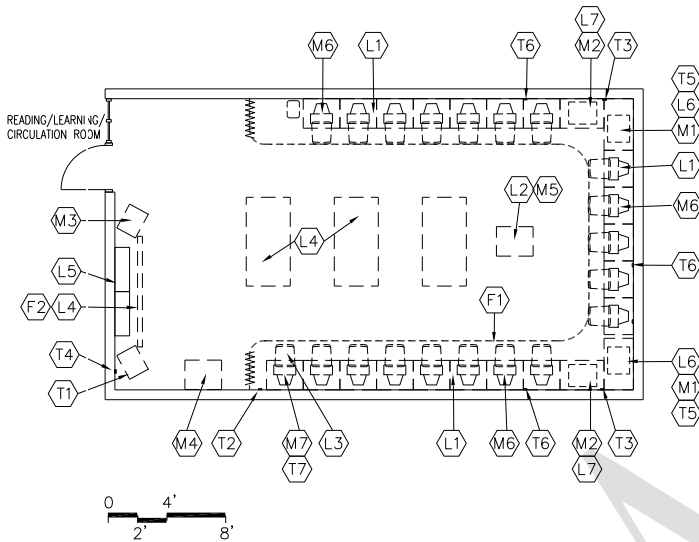
1. Finishes/Features: Refer to Chapter 8 for specification references.
2. Refer to the Educational Specifications — Technology, Section 1240.



Educational Specifications for MacFarland Middle School

MEDIA PRODUCTION AREA

M-MC-2



GOAL:

- To provide a soundproof, properly lighted room for video productions, audio productions, publication purposes, and multimedia productions using computer accessories and peripherals such as scanners, digital cameras, etc.

PROGRAM ACTIVITIES:

- Video creation/production
- Voice over/dubbing
- Creative writing
- Closed circuit TV production
- Newspaper production
- Scanning
- Digitizing

SPATIAL RELATIONSHIP:

- Adjacent and access to Reading/Learning/Circulation Room

ENVIRONMENTAL CONSIDERATIONS:

- Uniform lighting with an appropriate visual comfort level
- Environmental sound control:
 - Wall minimum: STC 45
 - Ceiling minimum: CAC 35
- Electrical outlets for equipment
- Special lighting for video production
- HVAC control separate from Media Center

CAPACITY:

- 15 students
- 2 teachers
- Community (after hours)

SIZE:

- Varies, see table

ANCILLARY SPACES:

- Reading/Learning/Circulation Room (M-MC-1)

NOTES:

- Loose furnishings and features shown represent one of many possible arrangements.



Educational Specifications for MacFarland Middle School

MEDIA PRODUCTION AREA
M-MC-2

	Spec. Ref.#		Spec. Ref.#
<u>Finishes¹:</u>		<u>Features¹:</u>	
Flooring:		Fixed Equipment:	
Carpet	096816	F1 Wall curtains	116143
Base:		F2 Manual projection screen	115213
Resilient base	096519	Audio-video monitor	
Ceiling:		<u>Fire Suppression:</u>	Div. 21
Suspended, acoustical	095113	Fire suppression system	
Walls:		<u>HVAC:</u> Div. 23	
Painted concrete masonry units	042000 / 099123	Supply/return air system	
<u>Loose Furnishings:</u>		Independent temperature control	
L1 5-10 computer workstations and chairs		Air conditioning	
L4 Equipment tables		<u>Electrical:</u> Div. 26	
L6 Printer table		Duplex receptacles	
L7 Scanner table		Multilevel switching	
<u>Miscellaneous:</u>		TVSS protected quad receptacle adjacent to each data port	
M1 Printers		Clock	
M2 Scanners		Central sound system	
M3 Video camera/monitor		<u>Communications:</u>	Div. 27
M6 5 computers for student use		T1 Audio - Video port	
		T2 Voice port and phone	
		T3 2 data ports for printer/scanners	
		T4 Cable/MATV port (input/output)	
		T6 5 data ports (min.) for student use	
		Wireless port	
		<u>Electronic Safety and Security:</u>	Div. 28
		Life safety devices per code	

NOTES:

1. Finishes/Features: Refer to Chapter 8 for specification references.



Educational Specifications for MacFarland Middle School

COMPUTER RESOURCE AREA

M-MC-3

CAPACITY:

- Up to 25 students
- 1 teacher

SIZE:

- Varies, see table

ANCILLARY SPACES:

- Reading/Learning/Circulation Room (M-MC-1)

GOAL:

- To provide a shared computer resource area for the entire school

PROGRAM ACTIVITIES:

- Instruction
- Student work areas
- Interdisciplinary training area
- Research

SPATIAL RELATIONSHIPS:

- Adjacent and access to Readers/Learning/Circulation Room
- Access from corridor

ENVIRONMENTAL CONSIDERATIONS:

- Uniform lighting with an appropriate visual comfort level
- Environmental sound control:
Wall minimum: STC 45
Ceiling minimum: CAC 35
- Electrical outlets for equipment, placed 30" above floor and recessed floor outlets as appropriate
- Master switch to control power to workstations
- HVAC separate from Media Center
- Adequate ventilation
- Auditory privacy

NOTES:

1. Loose furnishings and features shown represent one of many possible arrangements.



Educational Specifications for MacFarland Middle School

COMPUTER RESOURCE AREA
M-MC-3

	Spec. Ref.#		Spec. Ref.#
<u>Finishes¹:</u>		<u>Features¹:</u>	
Flooring:		Fixed Equipment:	
Carpet	096816	F1 Marker board (12 LF)	101100
		F2 Tack board (12 LF)	101100
Base:		F3 Manual projection screen	115213
Resilient base	096519		
Ceiling:		<u>Fire Suppression:</u>	Div. 21
Suspended, acoustical	095113	Fire suppression system	
Walls:		<u>Plumbing:</u>	
Painted concrete masonry units or dry wall		N/A	
042000 / 099123		<u>HVAC:</u> Div. 23	
<u>Loose Furnishings:</u>		Supply/return air system	
L1 25 computer workstations and chairs		Independent temperature control	
L2 Teacher desk and chair		<u>Electrical:</u> Div. 26	
L3 Printer/scanner table		Duplex receptacles	
<u>Miscellaneous:</u>		TVSS protected quad receptacle adjacent to each data and video port	
M1 Color printer		Multilevel switching	
M2 Black and white printer		Fluorescent lighting with parabolic lenses	
M3 Computer for teacher use		Clock	
M4 25 computers for student use		Central sound system	
M5 Scanner		<u>Communications:</u>	Div. 27
Audio enhancement equipment		T1 Cable/MATV port	
		T2 Voice port and phone	
		T3 Data port near teacher workstation	
		T4 25 data ports (min.) for student use	
		T5 2 data ports for printer	
		T6 Data port for scanner	
		T7 Video port, monitor, VCR,	
		T8 Ceiling mounted projector	
		<u>Electronic Safety and Security:</u>	Div. 28
		Life safety devices per code	

NOTES:

1. Finishes/Features: Refer to Chapter 8 for specification references.



Educational Specifications for MacFarland Middle School

Visual and Performing Arts Space Requirements

□

Spaces	Suggested			Comments
	Qty.	S.F.	Total	
Art Lab	1	1,300	1,300	
Kiln Room	1	100	100	
Art Storage	1	200	200	
Subtotal			1,600	
General Music	1	1,400	1,400	Instrumental/choral
Storage	2	varies	400	
Subtotal			1,800	

Music classrooms should be located near the stage to allow for the movement of equipment and to act as a 'backstage' area for performances.

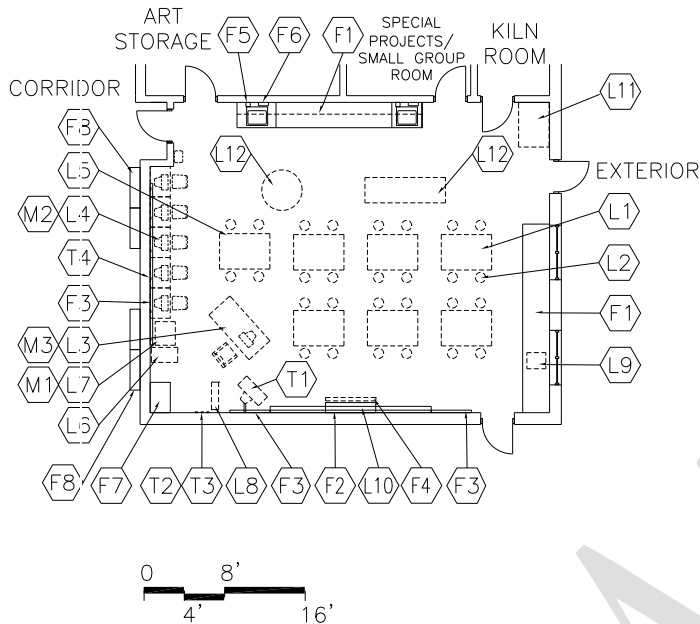
Spaces	Suggested			Comments
	Qty.	S.F.	Total	
Auditorium Seating	1	3,000	3,000	Or 'as is'
Stage	1	1000	1000	Drama/Dance
Control booth	1	80	80	
Workroom/Storage	1	400	400	
Chair Storage	1	200	200	
Total			4,480	



Educational Specifications for MacFarland Middle School

ART LAB

E-VA-1



CAPACITY:

- 20-24 students
- 1 teacher
- Student teacher
- Parent volunteers
- Student volunteers

SIZE:

- Varies, see table

ANCILLARY SPACES:

- Kiln Room (E-VA-3)
- Art Storage (E-VA-2)

SPATIAL RELATIONSHIPS:

- Centrally located with convenient access to Core Academic classrooms
- Direct access to art patio – with overhang
- Adjacent and access to Kiln Room

GOALS:

- To provide an area for students to work on a variety of art projects and to have positive experiences, which include developing confidence, commitment, and a sense of accomplishment
- To explore the manipulation of a variety of materials
- To develop technical and expressive skills
- To become aware of and be able to articulate thoughts about art and its reflection of other societies, cultures, and times
- To provide clean, adequate space in which to store art supplies and student projects

PROGRAM ACTIVITIES:

- Drawing, painting, and print making
- Sculpture, model-making, collage, and assembly
- Ceramics-clay (age appropriate)
- Computer graphics and mixed media work
- Guest artist lectures
- Demonstrations
- Viewing prints/slides/movies/art videos
- Research, reading, and writing
- Individual and cooperative group work
- Storage of supplies, projects, and small equipment
- Mixed media work

ENVIRONMENTAL CONSIDERATIONS:

- Uniform lighting/track and display lighting
- Windows to provide natural light and egress, preferably northern exposure
- Environmental sound control:
Wall minimum: STC 45
Ceiling minimum: CAC 35
- Include outlets on the wall above counter spaces in raceway
- Electrical outlets for equipment
- Provide one ceiling hung, retractable electrical outlet
- Window treatment to darken room for AV presentation as required

NOTES:

1. Loose furnishings and features shown represent one of many possible arrangements.



Educational Specifications for MacFarland Middle School

ART LAB
E-VA-1

CHAPTER 4: ELEMENTARY SCHOOLS

	Spec. Ref.#		Spec. Ref.#
<u>Finishes¹:</u>		<u>Features¹:</u>	
Flooring:		Fixed Equipment:	
Quartz tile	096618	F1 Casework:	
Base:		30" high base/wall cabinets near	
Resilient base	096519	sinks	123200
Ceiling (12' high minimum to underside of		Paper storage cabinets	
deck):		F2 Marker board	101100
Exposed structure, painted	099123	16 LF primary	
with acoustical treatment	098400	F5 Tack board flanking marker board	
Walls:		Plus two (2) parallel rows of	
Painted concrete masonry units or dry wall		continuous tack strips on all available	
One tackable wall	042000 / 099123	walls (4 LF or longer) at 30" and 48"	
		AFF	
<u>Loose Furnishings:</u>		F6 Manual projection screen (60"X60")	115213 ³
L1 12 2-person student work tables		F5 Soap dispenser (at each sink)	102800
L2 24-26 Student chairs		F6 Towel dispenser (at each sink)	102800
L3 Teacher workstation and chair		F7 Casework: Wardrobe	123200
L4 3 computer (laptops) tables and chairs		F8 Display cases	
L6 1, four-drawer file cabinet		<u>Fire Suppression:</u>	Div. 21
L7 Audio visual cart for teacher use		Fire suppression system	
L10 Adjustable height shelves (24 LF) for		<u>Plumbing:</u> Div. 22	
drying 3D objects		Sinks with solids interceptor	
L11 Drying rack (40-80 slats)		2 large, deep sinks	
Flat storage (10 drawers)		Plumbing connections	
<u>Communications:</u>	Div. 27	<u>HVAC:</u> Div. 23	
T2 Voice port and phone		Supply/return air system	
T3 Data port near teacher workstation		Independent temperature control	
T4 3-5 data ports for student use		Manually controlled general exhaust	
Digital white board		<u>Electrical:</u> Div. 26	
<u>Miscellaneous:</u>		Duplex receptacles	
M2 3-5 computers for student use		3 per primary teaching wall	
M3 Computer for teacher use		At least 2 per other walls	
Audio enhancement equipment		TVSS protected quad receptacle	
<u>Electronic Safety and Security:</u>	Div. 28	adjacent to each data port	
Life safety devices per code		Multilevel switching	
		Clock	
		Central sound system	
		Display/track lighting	

NOTES:

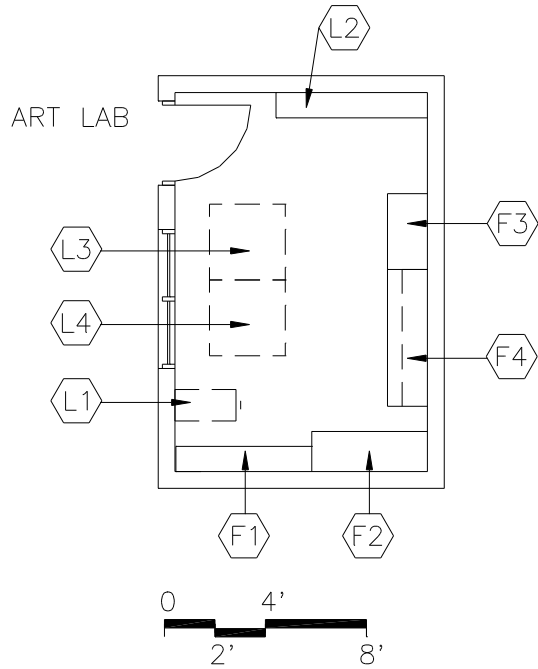
1. Finishes/Features: Refer to Chapter 8 for specification references.



Educational Specifications for MacFarland Middle School

ART STORAGE

E-VA-2



GOAL:

- To provide lockable storage for art supplies, portable equipment, technology, peripherals, and materials

PROGRAM ACTIVITIES:

- Storage of equipment and supplies

SPATIAL RELATIONSHIPS:

- Direct access to Art Lab
- Visual access from Art Lab

ENVIRONMENTAL CONSIDERATIONS:

- Uniform lighting
- Electrical outlets for equipment

CAPACITY:

- 1 teacher

SIZE:

- 150 SF

ANCILLARY SPACES:

- Art Lab (E-VA-1)

NOTES:

Loose furnishings and features shown represent one of many possible arrangements.



Educational Specifications for MacFarland Middle School

ART STORAGE
E-VA-2

	Spec. Ref.#		Spec. Ref.#
<u>Finishes¹:</u>		<u>Features¹:</u>	
Flooring:		Fixed Equipment:	
Resilient tile flooring	096519	F1 Storage shelving:	
		18" deep, metal	105613
Base:		F2 Casework:	
Resilient base	096519	Tall cabinet	123200
Ceiling:		F3 Casework:	
Exposed ceiling, painted	099123	Paper storage cabinets	123200
		One cabinet for hazardous materials	
Walls:		<u>Fire Suppression:</u>	Div. 21
Painted concrete masonry units		Fire suppression system	
042000 / 099123		<u>HVAC:</u>	Div. 23
<u>Loose Furnishings:</u>		Supply/return air system	
L1 1, four-drawer file cabinet		Independent temperature	
L2 Greenware shelving (if kiln is used)		Control	
		<u>Electrical:</u>	Div. 26
		Duplex receptacles	
		Single-level switching	
		Fluorescent lighting	
		Central sound system	
		<u>Communications:</u>	
		N/A	
		<u>Electronic Safety and Security:</u>	Div. 28
		Life safety devices per code	
		<u>Miscellaneous:</u>	
		N/A	

NOTES:

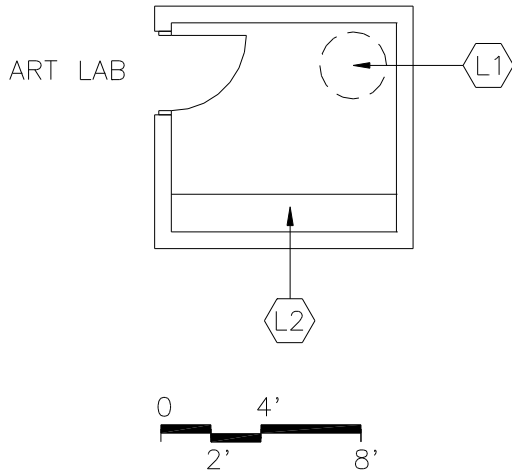
Finishes/Features: Refer to Chapter 8 for specification references.



Educational Specifications for MacFarland Middle School

KILN ROOM

E-VA-3



CAPACITY:

- 1-2 persons

SIZE:

- 100 SF

ANCILLARY SPACES:

- Art Lab (E-VA-1)

GOALS:

- To provide an area properly equipped for ceramics
- To provide a space to fire and store completed art work

PROGRAM ACTIVITIES:

- Store 3D sculptural work
- House kiln equipment

SPATIAL RELATIONSHIPS:

- Adjacent and access to Art Lab

ENVIRONMENTAL CONSIDERATIONS:

- Ventilation controlled by a thermostat
- Adequate ventilation with vents to the outside for kiln
- Electrical outlets for equipment
- Lighting appropriate to task
- Consider safety in plumbing room layout

NOTES:

Loose furnishings and features shown represent one of many possible arrangements.



Educational Specifications for MacFarland Middle School

KILN ROOM
E-VA-3

	<u>Spec. Ref.#</u>		<u>Spec. Ref.#</u>
<u>Finishes¹:</u>		<u>Features¹:</u>	
Flooring:		Fixed Equipment:	
Resilient tile flooring	096519	N/A	
Base:		<u>Fire Suppression:</u>	Div. 21
Resilient base	096519	Fire suppression system	
Ceiling:		<u>Plumbing:</u>	Div. 22
Exposed structure, painted	099123	Floor drain	
Walls:		<u>HVAC:</u>	Div. 23
Painted concrete masonry units	042000 / 099123	Temperature-controlled exhaust	
<u>Loose Furnishings:</u>		Ventilation for kiln	
L1 Kiln (28+ inch opening, 27 inches deep)		<u>Electrical:</u>	Div. 26
Furniture and ventilation		Duplex receptacles	
L2 Greenware shelving		Electrical connection for kiln	
		Single-level switching	
		Fluorescent lighting	
		Central sound system	
		<u>Communications:</u>	
		N/A	
		<u>Electronic Safety and Security:</u>	Div. 28
		Life safety devices per code	
		<u>Miscellaneous:</u>	
		N/A	

NOTES:

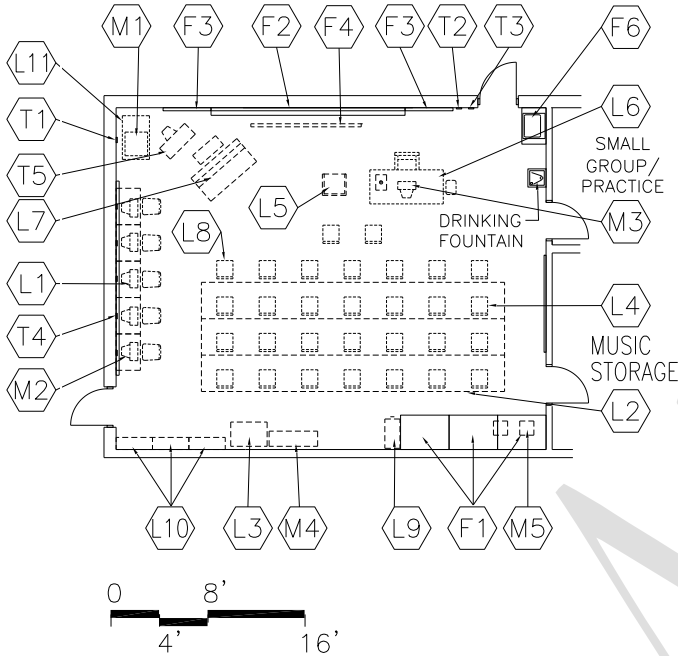
Finishes/Features: Refer to Chapter 8 for specification references.



Educational Specifications for MacFarland Middle School

GENERAL MUSIC ROOM (Instrumental and performing arts)

E-MU-1



CAPACITY:

- 20-45 students
- 1 teacher
- Parents/volunteers

SIZE:

- 1,400 SF

ANCILLARY SPACES:

- General Music Storage (E-MU-2)

GOAL:

- To provide students with the opportunity to explore and develop skills in music through large group, ensemble, and solo experiences

PROGRAM ACTIVITIES:

- Listen, analyze, describe, and compose music (stereos, CD players, computers and printer, laser discs)
- Sing alone and with others (solos, duets, trios, ensembles, large groups)
- Guest speakers and performers (solo and ensembles)
- Instrumental ensembles and band

SPATIAL RELATIONSHIPS:

- Adjacent and access to Music Storage

ENVIRONMENTAL CONSIDERATIONS:

- Uniform lighting/Theatrical lighting
- Environmental sound control:
Wall minimum: STC 50
Ceiling minimum: CAC 35
- Sound insulation in walls (extended above ceiling to underside of deck)
- Acoustical wall treatments
- Electrical outlets for equipment
- Adequate ventilation
- Proportion classroom for effective viewing and listening from all areas of the classroom
- Auditory privacy
- Drinking fountain in classroom

NOTES:

1. Loose furnishings and features shown represent one of many possible arrangements.

Educational Specifications for MacFarland Middle School

GENERAL MUSIC ROOM

E-MU-1

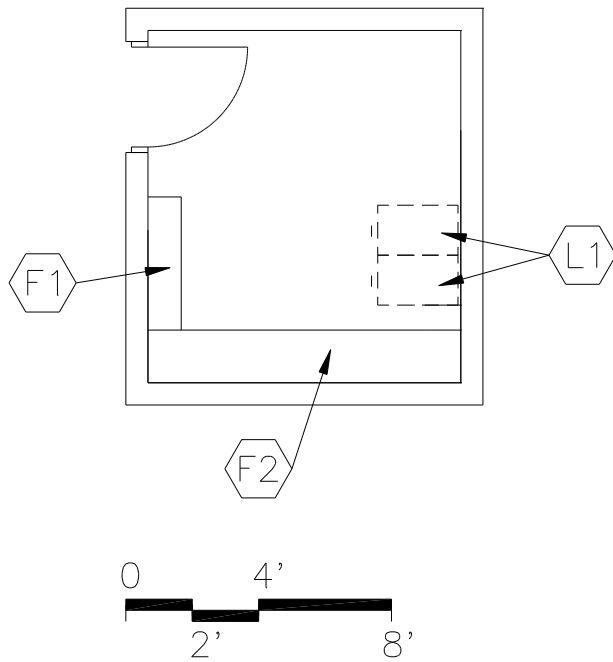
	Spec. Ref.#		Spec. Ref.#
<u>Finishes¹:</u>		<u>Features¹:</u>	
Flooring:		Fixed Equipment:	
Carpet	096816	F1 Casework:	
		Paper storage cabinets	123200
Base:		F2 Marker board (16 LF)	
Resilient base	096519	1/2 with music staff bars	101100
		F3 Tack board	101100
Ceiling(10' high minimum):		F4 Manual projection screen	115213
Suspended, acoustical	095113	F5 Casework:	
		Wardrobe	123200
Walls:		F6 Casework:	
Painted concrete masonry units		Sink cabinet	123200
042000 / 099123		<u>Fire Suppression:</u>	Div. 21
		Fire suppression system	
<u>Loose Furnishings:</u>		<u>Plumbing:</u> Div. 22	
L1 3-5 computer workstations and chairs		Plumbing connections	
L2 Portable choral risers with rails (one set)		Drinking fountain	
L3 Mobile A/V cabinet		Sink	
L4 24 music posture chairs		<u>HVAC:</u> Div. 23	
L5 Conductor podium, chair and stand		Supply/return air system	
L6 Teacher desk and chair		Independent temperature control	
L7 Upright piano		<u>Electrical:</u> Div. 26	
Instrument storage (one room only)		Duplex receptacles	
(see furniture standards)		3 per primary teaching wall	
L9 Four-drawer file cabinet		2 per other walls	
L10 Adjustable height bookshelves (24LF)		TVSS protected quad receptacle	
		adjacent to each data and video port	
<u>Communications:</u>	Div. 27	Multilevel switching	
T2 Voice port and phone		Theatrical lighting	
T3 Data port near teacher workstation		Clock	
T4 5 data ports for student use		Central sound system	
<u>Miscellaneous:</u>		<u>Electronic Safety and Security:</u>	Div. 28
M1 Projection device on cart	Div. 27	Life safety devices per code	
M2 3-5 computers for student use			
M3 Computer teacher use			
M4 MIDI synthesizer			
M5 A/V recording/playback equipment			

NOTES:

1. Finishes/Features: Refer to Chapter 8 for specification references.

GENERAL MUSIC STORAGE

E-MU-2



GOAL:

- To provide adequate storage for choral risers, accessories, and equipment

PROGRAM ACTIVITIES:

- Storage and simple repair of accessories and equipment

SPATIAL RELATIONSHIPS:

- Adjacent and access to General Music Room

ENVIRONMENTAL CONSIDERATIONS:

- Uniform lighting
- Electrical outlets

CAPACITY:

- Students
- Teachers

SIZE:

- 150 SF – 200 SF

ANCILLARY SPACES:

- General Music Room (E-MU-1)

NOTES:

Loose furnishings and features shown represent one of many possible arrangements.

Educational Specifications for MacFarland Middle School

GENERAL MUSIC STORAGE

E-MU-2

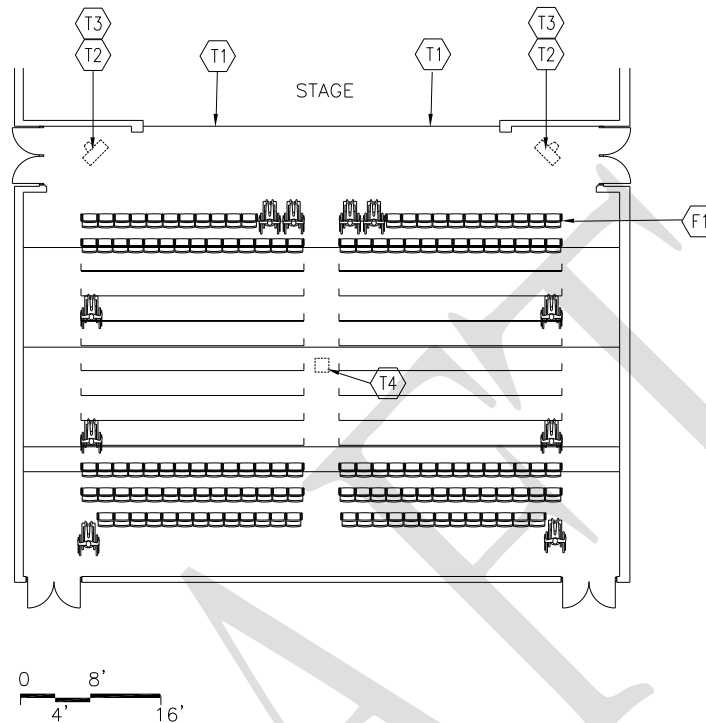
	Spec. Ref.#		Spec. Ref.#
<u>Finishes¹:</u>		<u>Features¹:</u>	
Flooring:		Fixed Equipment:	
Resilient tile flooring	096519	F1 Storage shelving:	
		12" deep	105613
Base:		F2 Storage shelving:	
Resilient base	096519	18" deep	105613
Ceiling:		<u>Fire Suppression:</u>	
Suspended, acoustical	095113	Fire suppression system	Div. 21
Walls:		<u>Plumbing:</u>	
Painted concrete masonry units	042000 / 099123	N/A	
<u>Loose Furnishings:</u>		<u>HVAC:</u>	
L1 2, four-drawer file cabinet (legal size)		Div. 23	
		Supply/return air system	
		<u>Electrical:</u>	
		Div. 26	
		Duplex receptacles	
		Single-level switching	
		Central sound system	
		<u>Electronic Safety and Security:</u>	
		Life safety devices per code	Div. 28
		<u>Miscellaneous:</u>	
		N/A	

NOTES:

Finishes/Features: Refer to Chapter 8 for specification references.

PERFORMANCE SEATING (optional)

M-PA-1



CAPACITY:

- Students
- Teachers
- Members of the community

SIZE:

- 3,000 SF

ANCILLARY SPACES:

- Stage (M-PA-2)
- Control Room (M-PA-4)

ENVIRONMENTAL CONSIDERATIONS:

- Optimize acoustic qualities
- Provide flat floor area

GOAL:

- To provide a flexible performance venue

PROGRAM ACTIVITIES:

- Theatrical productions
- Student assemblies
- Musical productions
- Community programs and events
- Gallery

SPATIAL RELATIONSHIPS:

- Convenient access to visitor parking
- Locate near restrooms
- Locate adjacent to other performing arts spaces
- All facilities in this area must have easy access to the rest of the school building with capability to be closed off from all parts of school during public evening activities
- Adjacent and access to Stage
- Adjacent and access to Control Room
- Sound connections in seating section

NOTES:

1. Design Professional and/or theatre/acoustical consultant shall confirm auditorium finishes/features and performance criteria with District of Columbia Public Schools' performing arts personnel.

Educational Specifications for MacFarland Middle School

PERFORMANCE SEATING (optional)

M-PA-1

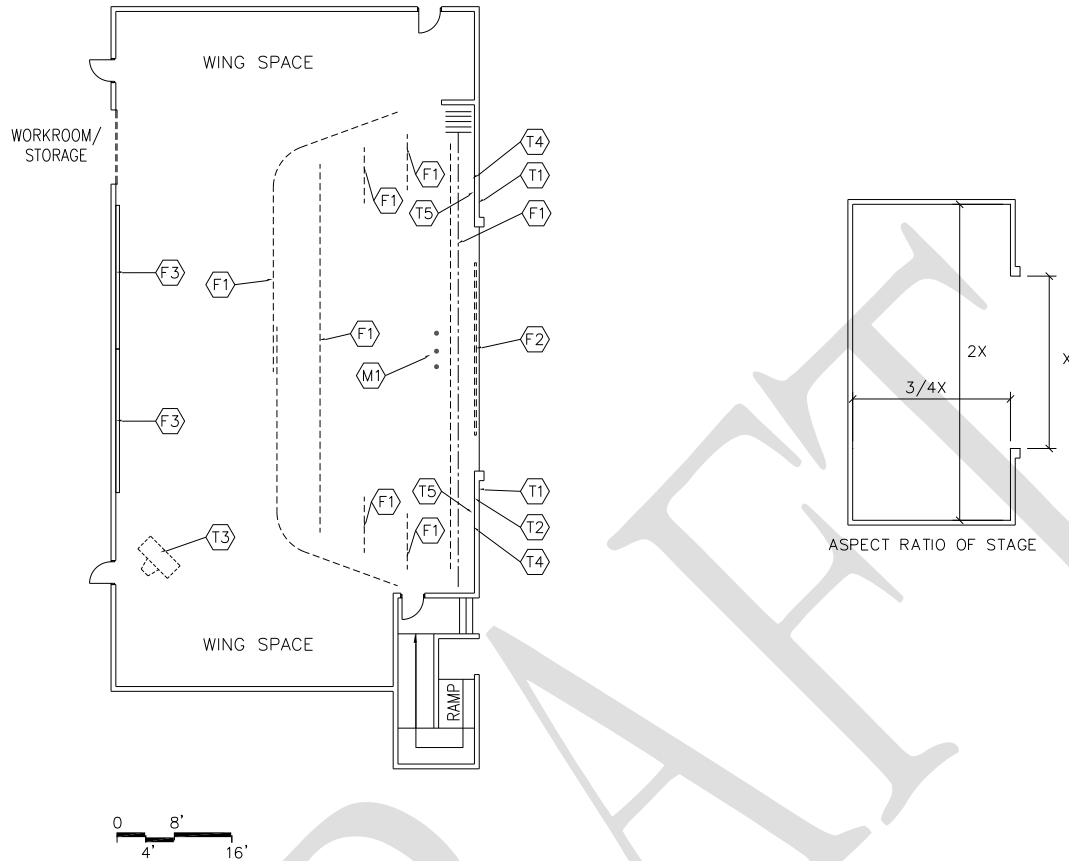
Spec.	Ref.#	Features ¹ :	Spec. Ref.#
<u>Finishes¹:</u>		<u>F1</u>	
Flooring:		Seating for up to 300	
Vinyl composition tile	096519		
Base:		<u>Fire Suppression:</u>	Div. 21
Resilient base	096519	Fire suppression system	
Ceiling:		<u>Plumbing:</u>	
Suspended, acoustical	095113	N/A	
Curved deflection ceilings with acoustical metal deck			
Walls:		<u>HVAC:</u>	Div. 23
Painted concrete masonry units		Supply/return air system	
042000 / 099123		Independent temperature control	
Optional finishes include:		<u>Electrical:</u>	Div. 26
Split Face CMU	042000	Duplex receptacles	
Ground Face CMU	042000	TVSS protected quad receptacle adjacent to each data port	
Acoustical CMU	042000	Feature lighting	
Painted Gypsum board		Stage dimming system	
092216 / 099123		House lighting	
<u>Loose Furnishings</u>		Illumination levels: See table 7600-16	
Optional loose seating		Clock	
		Auditorium sound system	
		<u>Communications:</u>	Div. 27
		T1	2 data ports
			In apron below stage
		T2	2 video ports, monitors, VCR/DVD,
		T3	2 cable/MATV ports
			Computerized lighting controls
			Communication system among Control Room, Stage, and Workroom/Storage
		<u>Electronic Safety and Security:</u>	Div. 28
		Life safety devices per code	

1. Finishes/Features: Refer to Chapter 8 for specification references.

Educational Specifications for MacFarland Middle School

STAGE

M-PA-2



CAPACITY:

- Students
- Teachers
- Parents/volunteers
- Members of the community

SIZE:

- 1000

ANCILLARY SPACES:

- Hall Seating (M-PA-1)
- Workroom/Storage (M-PA-3)

GOAL:

- To provide a space for student performances

PROGRAM ACTIVITIES:

- Theatrical/musical productions
- Conferences, student assemblies, and award programs
- Dance instruction

SPATIAL RELATIONSHIPS:

- Adjacent and access to Auditorium
- Adjacent and access to Workroom/Storage
- Near music classrooms

ENVIRONMENTAL CONSIDERATIONS:

- Environmental sound control
Wall minimum: STC 56
Roof minimum: STC 40
- Provide sufficient wings space for productions
- Specialty track lighting for Stage

NOTES:

1. Design Professional and/or theatre/acoustical consultant shall confirm auditorium finishes/features and performance criteria with District of Columbia Public Schools' performing arts personnel.

Educational Specifications for MacFarland Middle School

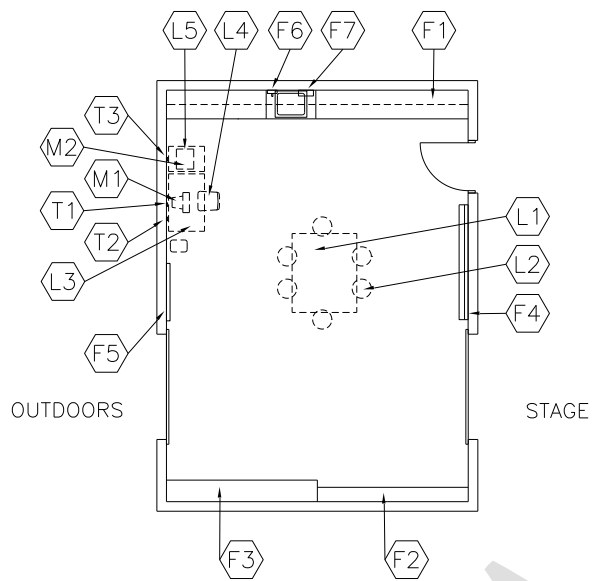
STAGE
M-PA-2

	Spec. Ref.#		Spec. Ref.#
<u>Finishes¹:</u>		<u>Features:</u>	
Flooring:		<u>Fixed Equipment:</u>	
Wood flooring ²	096466	F1 Theater and stage equipment	116143
		F2 Motorized projection screen	115213
		F3 Mirror	088000
		F4 Operable partition, manual	102226
Base:		<u>Fire Suppression:</u>	Div. 21
Ventilated resilient base	096466	Fire suppression system	
Ceiling:		<u>Plumbing:</u>	
Painted exposed structure	099123	N/A	
Walls:		<u>HVAC:</u>	Div. 23
Painted concrete masonry units	042000 / 099123	Supply/return air system	
		Independent temperature control	
		Smoke hatches	
<u>Loose Furnishings (Not Shown):</u>		<u>Electrical:</u>	Div. 26
Upright piano		Duplex receptacles	
Portable dance bars		12" o.c. on back and wing walls	
Mobile folding risers		3 duplex outlets in apron at front of stage	
Podium		TVSS protected quad receptacle adjacent to each data port	
Orchestra shell (optional)		Single-level switching	
		General purpose lighting	
<u>Miscellaneous:</u>		Stage dimming system	
M1 Handheld/lavaliere microphones		House lighting	
		Clock	
		Auditorium sound system	
		Provide outlet in apron at front of stage	
		<u>Communications:</u>	Div. 27
		T1 2 data ports on stage	
		T2 Voice port and telephone	
		T4 Microphone port	
		T5 Jacks for sound system	

1. Finishes/Features: Refer to Chapter 8 for specification references.
2. Provide hardwood on forestage and extend into stage at width of proscenium by 10'-20' deep.

WORKROOM / STORAGE

M-PA-3



CAPACITY:

- Students
- Teachers
- Parents/volunteers

SIZE:

- 400 SF

ANCILLARY SPACES:

- Stage (M-PA-2)

GOAL:

- To provide an area to construct and store props

PROGRAM ACTIVITIES:

- Construction of props
- Storage

SPATIAL RELATIONSHIP:

- Adjacent and access to Stage (2 doors)

ENVIRONMENTAL CONSIDERATIONS:

- Uniform lighting
- Environmental sound control:
Wall minimum: STC 45
Ceiling minimum: CAC 35
- Adequate ventilation
- Minimum 20' clear ceiling height
- Doors should be 15' clear height to allow for moving flats to storage
- Provide rigging to support sets

NOTES:

1. Loose furnishings and features shown represent one of many possible arrangements.

Educational Specifications for MacFarland Middle School

WORKROOM / STORAGE

M-PA-3

<u>Finishes¹:</u>	<u>Spec. Ref.#</u>	<u>Features:</u>	<u>Spec. Ref.#</u>
<u>Flooring:</u>		<u>Fixed Equipment:</u>	
Sealed concrete	033000	F1 Casework: Base/wall cabinets and shelving	123200
<u>Base:</u>		F2 Storage shelving: 12" deep	105613
Resilient base	096519	F3 Storage shelving: 18" deep	105613
<u>Ceiling:</u>		F4 Marker board (8 LF)	101100
Painted exposed structure	099123	F5 Tack board (4 LF)	101100
<u>Walls:</u>		F6 Soap dispenser	102800
Painted concrete masonry units	042000 / 099123	F7 Towel dispenser	102800
<u>Loose Furnishings:</u>		<u>Fire Suppression:</u>	Div. 21
L1 Workbench		Fire suppression system	
L2 6 Stools		<u>Plumbing:</u>	Div. 22
		Plumbing connections	
		Sink	
		<u>HVAC:</u>	Div. 23
		Supply/return air system	
		<u>Electrical:</u>	Div. 26
		Duplex receptacles	
		TVSS protected quad receptacle adjacent to each data port	
		Single-level switching	
		Fluorescent lighting:	
		Clock	
		Central sound system	
		Auditorium sound system	
		<u>Communications:</u>	Div. 27
		T1 Voice port and phone	
		T2 Data port at workstation	
		<u>Electronic Safety and Security:</u>	Div. 28
		Life safety devices per code	

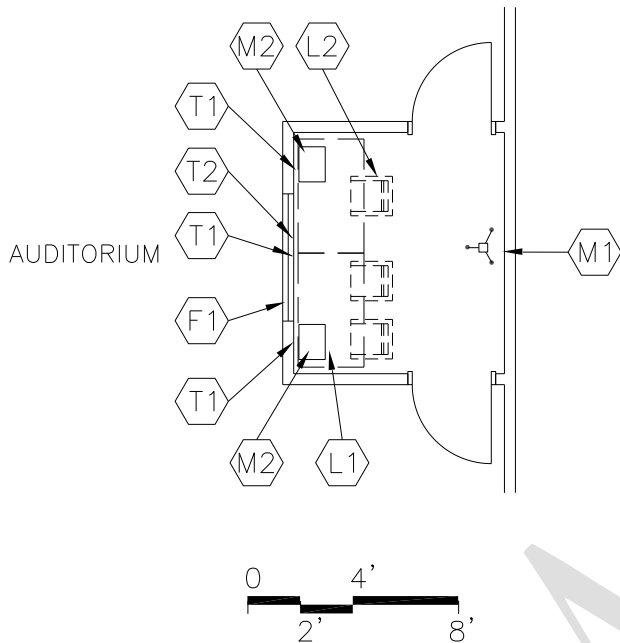
NOTES:

1. Finishes/Features: Refer to Chapter 8 for specification references.

Educational Specifications for MacFarland Middle School

CONTROL ROOM

M-PA-4



GOAL:

- To provide space for the equipment needed to operate the sound, lighting, and projection equipment for the Performance Hall.

PROGRAM ACTIVITIES:

- Running sound and light equipment for performances
- Teaching of technical theatre

SPATIAL RELATIONSHIPS:

- Behind last row of auditorium seating

ENVIRONMENTAL CONSIDERATIONS:

- Unobstructed view of stage at all times
- Uniform lighting
- Task lighting
- Electrical outlets for equipment
- Environmental sound control:
 - Wall minimum: STC 55
 - Ceiling minimum: CAC 55
- Consider sound transfer during performances
- Handicapped accessible
- Auditory privacy
- Audio drop connecting control room and stage

CAPACITY:

- 3-5 students
- Teacher

SIZE:

- 80 SF

ANCILLARY SPACES:

- Performance Hall (M-PA-1)

NOTES:

1. Design Professional and/or theatre/acoustical consultant shall confirm auditorium finishes/features and performance criteria with District of Columbia Public Schools' performing arts personnel.

Educational Specifications for MacFarland Middle School

CONTROL ROOM M-PA-4

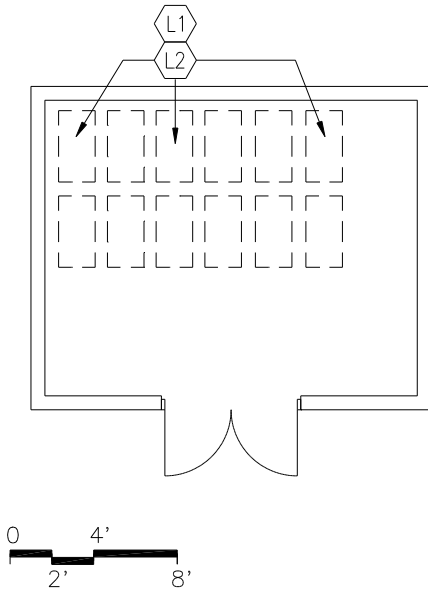
	Spec. Ref.#		Spec. Ref.#
<u>Finishes</u> ¹ :		<u>Features</u> :	
Flooring:		Fixed Equipment:	
Carpet	096816	F1 Operable window	081113 / 088000
Base:		<u>Fire Suppression</u> :	Div. 21
Resilient base	096519	Fire suppression system	
Ceiling:		<u>Plumbing</u> :	
Suspended, acoustical	095113	N/A	
Walls:		<u>HVAC</u> :	Div. 23
Painted concrete masonry units	042000 / 099123	Supply/return air system	
<u>Loose Furnishings</u> :		Soundproof HVAC system	
L1 Rectangular Tables		Independent temperature control	
L2 3 chairs		<u>Electrical</u> :	Div. 26
		Duplex receptacles	
		TVSS protected quad receptacle adjacent to each data port	
		Single-level switching	
		Feature/task lighting	
		Stage dimming system	
		Clock	
		Auditorium sound system	
		<u>Communications</u> :	Div. 27
		T1 3 data ports	
		T2 Voice and phone	
		<u>Electronic Safety and Security</u> :	Div. 28
		Life safety devices per code	
		<u>Miscellaneous</u> :	
		M2 Lighting/Sound/Video control Equipment (mobile/portable)	
		Intercom/Headset connections	

NOTES:

1. Finishes/Features: Refer to Chapter 8 for specification references.

CHAIR STORAGE

M-PA-5



GOAL:

- To provide convenient storage of chairs

PROGRAM ACTIVITY:

- Storing and retrieving chairs, portable risers, podium, and piano

SPATIAL RELATIONSHIPS:

- Adjacent to Auditorium Seating
- May provide back of stage access

ENVIRONMENTAL CONSIDERATIONS:

- Uniform lighting
- Cleanable building surfaces
- Accessibility for moving furniture in and out

CAPACITY:
N/A

SIZE:
• 200 SF

ANCILLARY SPACES:
N/A

NOTES:

1. Loose furnishings and features shown represent one of many possible arrangements.

Educational Specifications for MacFarland Middle School

CHAIR STORAGE M-PA-5

	Spec. Ref.#		Spec. Ref.#
<u>Finishes¹:</u>		<u>Features¹:</u>	
Flooring:		Fixed Equipment:	
Vinyl composition tile	096519	N/A	
Base:		<u>Fire Suppression:</u>	Div. 21
Resilient base	096519	Fire suppression system	
Ceiling:		<u>Plumbing:</u>	
Cleanable, suspended, acoustical	095113	N/A	
Walls:		<u>HVAC:</u>	Div. 23
Epoxy-painted concrete masonry units	042000 / 099123	Supply/return air system	
<u>Loose Furnishings:</u>		<u>Electrical:</u>	Div. 26
L1 Chairs		Duplex receptacles	
L2 Chair dollies		Single-level switching	
		Fluorescent lighting	
		<u>Communications:</u>	
		N/A	
		<u>Electronic Safety and Security:</u>	
		N/A	
		<u>Miscellaneous:</u>	
		N/A	

NOTES:

1. Finishes/Features: Refer to Chapter 8 for specification references.

Educational Specifications for MacFarland Middle School

Physical Education

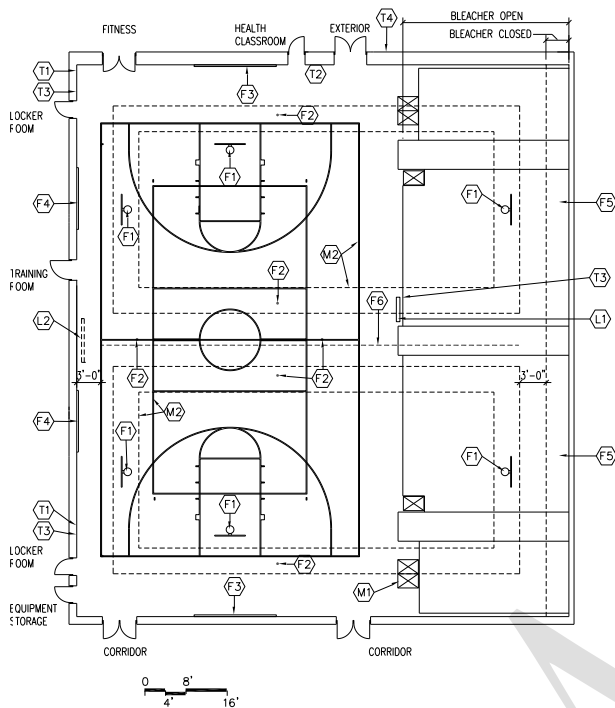
Spaces	Suggested			Comments
	Quantity	S.F.		
Gymnasium	1	6,500	6,500	If feasible
Bleachers		2,400		(optional)
Storage	1	400	400	
Locker Rooms	2	750	1500	w/ bathrooms
Office	2	150	300	
Uniform Storage	1	250	250	
Coach Office	1	120	120	
Fitness	1	800	800	
Total			9,870	

MacFarland has two small gyms. A full court gym is desirable but site and budget may impact the options and timing.

DRAFT

MULTIPURPOSE GYMNASIUM

M-PEH-1



Please see page 5105-5 for an enlargement of this diagram.

CAPACITY:

- Students
- Teachers and staff
- Members of the community (after hours)

ANCILLARY SPACES:

- Health Classroom (M-PEH-3)
- Locker Rooms/Showers (M-PEH-4)
- Equipment Storage (M-PEH-6)

GOAL:

- To serve as a physical education facility during the school day and a practice and recreation area during non-school hours

PROGRAM ACTIVITIES:

- Physical education classes
- Interscholastic competition and daily practices
- Fitness
- Community programs and activities

SPATIAL RELATIONSHIPS:

- Adjacent and access to Fitness
- Adjacent and access to Health Classroom
- Adjacent and access to Locker Rooms/Showers
- Adjacent and access to Equipment Storage
- Near public toilets
- Near visitor parking
- Near outdoor play fields

ENVIRONMENTAL CONSIDERATIONS:

- Uniform lighting
- Adequate sound control/acoustics
- Clear height of 25' from floor to nearest obstruction
- Environmental sound control:
Wall minimum: STC 50
- Floor marked for various courts: volleyball, basketball, badminton, tennis
- Must be able to isolate Multipurpose Gymnasium from the rest of the school after hours
- Electrical outlets for equipment
- Drinking fountains in adjacent areas
- Capacity of bleachers shall be minimum of the student capacity plus staff
- Lighting should not add considerable heating load to gymnasium

NOTES:

1. Loose furnishings and features shown represent one of many possible arrangements.

Educational Specifications for MacFarland Middle School

MULTIPURPOSE GYMNASIUM

	Spec. Ref.#		Spec. Ref.#
<u>Finishes¹:</u>		<u>Features¹:</u>	
<u>Flooring:</u>		<u>Fixed Equipment:</u>	
Athletic wood flooring	096466	F1 Basketball backstops, adjustable height (ceiling hung or portable)	116600
<u>Base:</u>		F2 Volleyball sleeves and standards	116600
Ventilated resilient base	096466	F3 Safety wall wainscot	116600
<u>Ceiling:</u>		F4 Tack boards (32 LF)	101100
Painted exposed structure or Acoustical metal deck	099123	F5 Telescoping bleachers with scorer's table	126600
<u>Walls:</u>		F6 Gymnasium divider curtain	116600
Painted concrete masonry units	042000 / 099123	<u>Fire Suppression:</u>	
Sound absorbing concrete masonry units on 2 walls (minimum)	042000	Fire suppression system	
<u>Loose Furnishings:</u>		Preaction sprinkler system	
L1 Scorer table		<u>Plumbing:</u>	
(additional location for flexibility)		N/A	
L2 Scoreboard and control panel		<u>HVAC:</u>	
<u>Miscellaneous:</u>		Supply/return air system	
M1 Handicapped seating		Independent temperature control	
M2 Court markings (minimum)		<u>Electrical:</u>	
84' x 50' main basketball court, 2 cross courts to fit		Duplex receptacles	
Regulation volleyball court, 2 cross courts to fit		Electrical connections to P.E. equipment where necessary	
<u>Communications:</u>		Single-level switching	
T1 Microphone port	Div. 27	TVSS protected quad receptacle adjacent to each data and video port	
T2 Voice port and phone		High intensity discharge lighting	
T3 Ports for sound system		Means of egress lighting per code	
T4 Outside microphone port		Clocks with wire guards	
		Scoreboard (control outlets in the face of bleachers and opposite wall)	
		Central sound system	
		Gymnasium sound system	
		Provide wire guards on light fixtures and electrical devices.	
		<u>Electronic Safety and Security:</u>	
		Life safety devices per code	

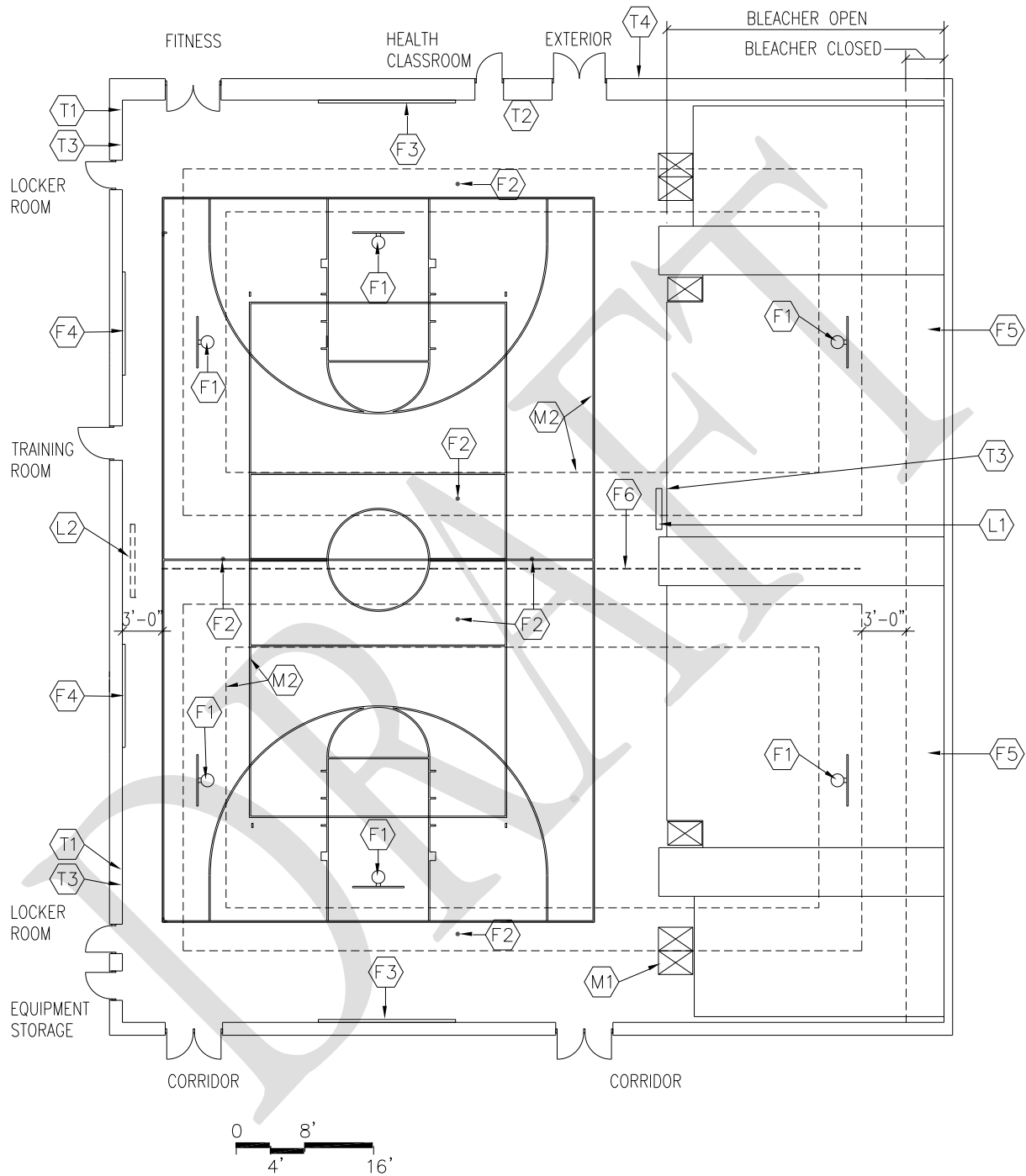
NOTES:

1. Finishes/Features: Refer to Chapter 8 for specification references.
2. Refer to the Educational Specifications — Technology, Section 1240.

Educational Specifications for MacFarland Middle School

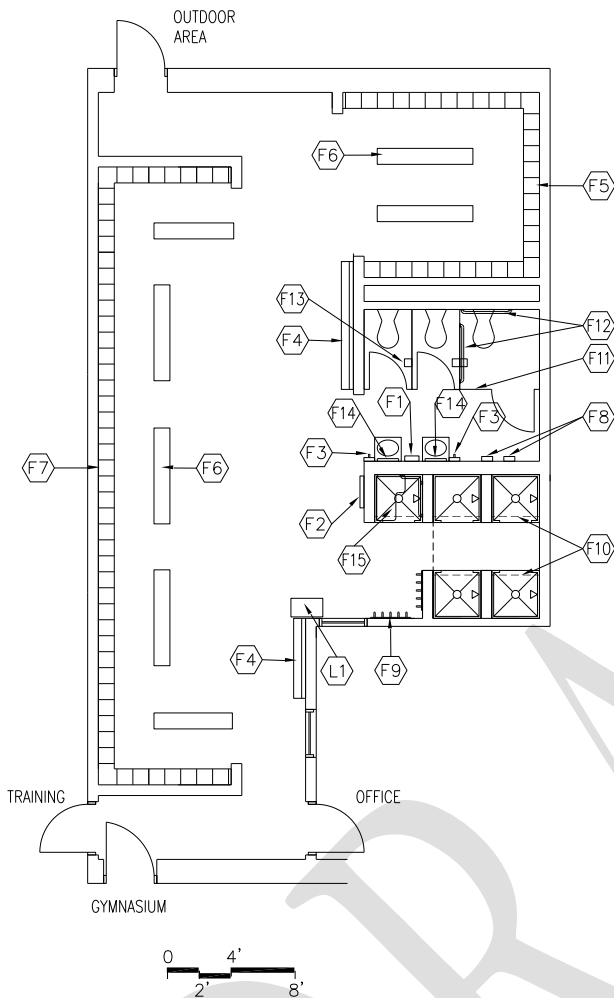
MULTIPURPOSE GYMNASIUM

M-PEH-1



LOCKER ROOMS / SHOWERS

M-PEH-4



GOAL:

- To provide a safe and clean area for students to shower, change, and store clothes

PROGRAM ACTIVITIES:

- Change clothing
- Clothing storage
- Shower
- Minor medical treatment

SPATIAL RELATIONSHIPS:

- Adjacent and access to gymnasium and outdoor area
- Located on gymnasium level
- Adjacent and access to office
- Provide blind condition at entry points

ENVIRONMENTAL CONSIDERATIONS:

- Uniform lighting
- Environmental sound control:
Wall minimum: STC 45
Ceiling minimum: CAC 35
- Cleanable building surfaces
- Adequate ventilation and exhaust
- Handicapped accessible
- Towel storage in adjacent area

CAPACITY:

- 30 students
- Others as appropriate

SIZE:

- Varies, see table

ANCILLARY SPACES:

- Multipurpose Gymnasium (M-PEH-1)
- Office (M-PEH-5)

NOTES:

1. Loose furnishings and features shown represent one of many possible arrangements.

Educational Specifications for MacFarland Middle School

LOCKER ROOMS / SHOWERS

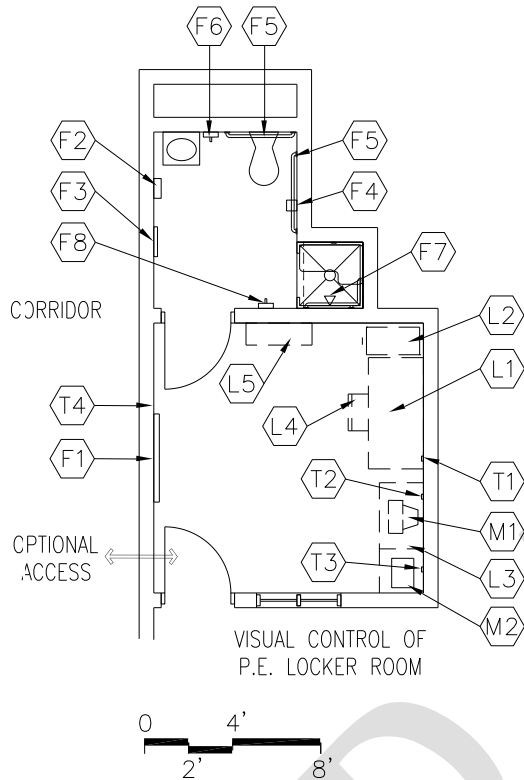
M-PEH-4

	Spec.		Spec.
<u>Finishes¹:</u>	<u>Ref.</u>	<u>Features¹:</u>	<u>Ref.#</u>
	#	<u>Fixed Equipment:</u>	
Flooring:		F1 Towel dispenser	102800
Ceramic mosaic tile	093013	F2 24" x 60" mirror	102800
		F3 Soap dispenser	102800
Base:		F4 Narrow counter with mirror above	064123
Ceramic mosaic tile	093013	F5 Athletic/PE lockers (30)	105113
with covered base		F6 Locker benches	105113
		F8 Hand dryer	
Ceiling:		F9 Towel hooks	102800
Lockers: Acoustical, suspended	095113	F10 Shower curtain and rod	102800
tectum with hold down clips		F11 Toilet partitions	102113
		F12 36" x 42" grab bars	102800
Painted portland cement plaster		F13 Toilet tissue holders	102800
096613 / 099123		F15 ADA shower accessories	102800
Walls:		<u>Fire Suppression:</u>	Div. 21
Lockers: Epoxy painted concrete		Fire suppression system	
masonry units	042000 / 099123		
Toilet/Showers: Ceramic tile	093013	<u>Plumbing:</u> Div. 22	
		Plumbing connections (two private showers	
<u>Loose Furnishings:</u>		only)	
L1 Hamper		Wall-mounted water closets	
		Wall-mounted lavatories	
		Wall-mounted urinals	
<u>Electrical:</u> Div. 26		ADA shower controls and head	
Duplex receptacles on perimeter		Shower fixtures (2)	
walls		Floor drains - in locker area, toilet area, and	
Single-level switching		showers	
Fluorescent lighting		<u>HVAC:</u> Div. 23	
		Supply/return air system	
Means of egress per code		Exhaust air system	
Clock		Independent temperature	
Central sound system		controls	
		Humidity controls	
<u>Communications:</u>		<u>Miscellaneous:</u>	
N/A		N/A	
<u>Electronic Safety and Security:</u>	Div. 28		
Life safety devices per code			

Educational Specifications for MacFarland Middle School

P.E. OFFICE

M-PEH-5



GOAL:

- To provide a work area for physical education faculty and staff to conduct administrative duties

PROGRAM ACTIVITIES:

- Ordering
- Scheduling
- Planning
- Maintaining records
- Meetings
- Visual control of P.E. Locker Room

SPATIAL RELATIONSHIP:

- Adjacent and access to Locker Rooms/Shower

ENVIRONMENTAL CONSIDERATIONS:

- Uniform lighting
- Environmental sound control:
 - Wall minimum: STC 450
 - Ceiling minimum: CAC 35
- Electrical outlets for equipment
- Windows to provide natural light, desirable
- Auditory privacy

CAPACITY:

- 1-2 teachers, student teachers

SIZE:

- 150 SF

ANCILLARY SPACES:

- Locker Rooms/Showers (M-PEH-4)

NOTES:

1. Loose furnishings and features shown represent one of many possible arrangements.
2. Provide P.E. Office for both men and women.

Educational Specifications for MacFarland Middle School

P.E. OFFICE M-PEH-5

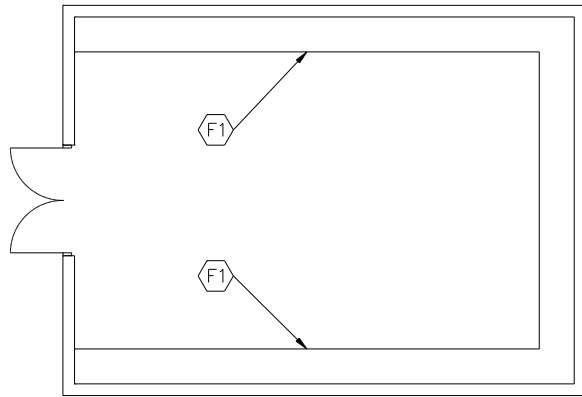
<u>Finishes¹:</u>	<u>Spec. Ref.#</u>	<u>Features¹:</u>	<u>Spec. Ref.#</u>
<u>Flooring:</u>		<u>Fixed Equipment:</u>	
Office: Vinyl composition tile	096519	F1 Tack board (4 LF)	101100
Toilet: Ceramic mosaic tile	093013	F2 Towel dispenser	102800
		F3 24" x 60" mirror	102800
<u>Base:</u>		F4 Toilet tissue holder	102800
Office: Resilient base	096519	F5 36" and 42" grab bars	102800
Toilet: Ceramic mosaic tile base with covered base	093013	F6 Soap dispenser	102800
		F7 ADA shower accessories	102800
<u>Ceiling:</u>		F8 Towel hook	102800
Acoustical, suspended	05113		
<u>Walls:</u>		<u>Fire Suppression:</u>	Div. 21
Painted concrete masonry units		Fire suppression system	
042000 / 099123			
Epoxy painted concrete masonry units at restroom	042000 / 099123	<u>Plumbing:</u>	Div. 22
		Plumbing connections	
		Wall mounted lavatory	
		Wall mounted water closet	
		Shower	
		Floor drains - in shower and restroom	
<u>Loose Furnishings:</u>		<u>HVAC:</u>	Div. 23
L1 Desk		Supply/return air system	
L2 Four-drawer file cabinet		Independent temperature control	
L3 Computer workstation			
L4 Ergonomic task chair		<u>Electrical:</u>	Div. 26
L5 Adjustable height bookshelves (12 LF)		Duplex receptacles	
		Single-level switching	
		TVSS protected quad receptacle adjacent to data port	
		Fluorescent lighting	
		Central sound system	
<u>Miscellaneous:</u>		<u>Communications:</u>	Div. 27
M1 Computer		T1 Voice port and phone	
		T2 Data port near teacher workstation	
		T3 Data port for printer	
		<u>Electronic Safety and Security:</u>	Div. 28
		Life safety devices per code	

NOTES:

1. Finishes/Features: Refer to Chapter 8 for specification references.

EQUIPMENT (Chair) STORAGE

M-PEH-6



GOAL:

- To provide space to adequately store all equipment and supplies for physical education
- To provide space for 120 folding chairs and 10 folding tables

PROGRAM ACTIVITY:

- Storage for equipment

SPATIAL RELATIONSHIP:

- Adjacent and access to Multipurpose Gymnasium

ENVIRONMENTAL CONSIDERATION:

- Uniform lighting

CAPACITY:

- 1-2 student teachers
- 1-2 teachers

SIZE:

- Varies, see table

ANCILLARY SPACES:

- Multipurpose Gymnasium (M-PEH-1)

NOTES:

1. Loose furnishings and features represent one of many possible arrangements.

Educational Specifications for MacFarland Middle School

EQUIPMENT STORAGE

M-PEH-6

<u>Finishes¹:</u>	<u>Spec. Ref.#</u>	<u>Features¹:</u>	<u>Spec. Ref.#</u>
Flooring: Sealed concrete	033000	Fixed Equipment: F1 Storage shelving: 84" high, 24" deep	10670
Base: Resilient base	096519	<u>Fire Suppression:</u> Fire suppression system	Div. 21
Ceiling: Exposed structure, painted	099123	<u>Plumbing:</u> N/A	
Walls: Painted concrete masonry units	042000 / 099123	<u>HVAC:</u> Div. 23 Supply/return air system Exhaust	
<u>Loose Furnishings:</u> N/A		<u>Electrical:</u> Div. 26 Duplex receptacle Single-level switching Fluorescent lighting	
		<u>Communications:</u> N/A	
		<u>Electronic Safety and Security:</u> N/A	
		<u>Miscellaneous:</u> N/A	

NOTES:

1. Finishes/Features: Refer to Chapter 8 for specification references..

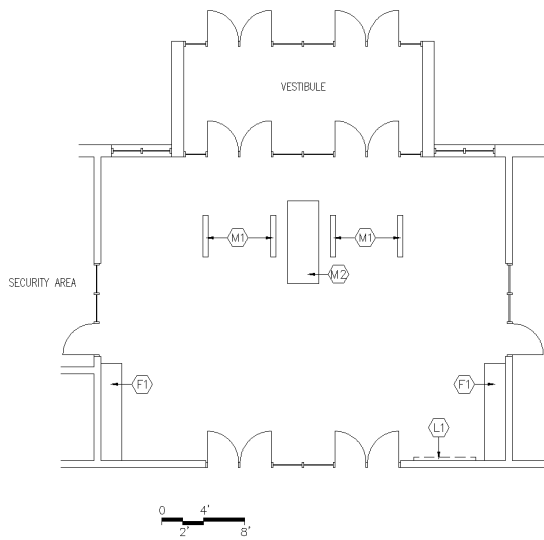
Educational Specifications for MacFarland Middle School

Administration/Student Support Services Space Requirements

Spaces	Suggested			Comments
	Quantity	S.F.	Quantity	
Entrance Lobby	1	350	350	Includes security desk
Welcome Center	1	400	400	Welcoming Area, work area for Administrative Asst.
Conference Room	1	250	250	
Principal's Office	1	230	230	
Assistant Principal's Office	2	125	250	
Administrative Workroom/Mail rm	1	200	200	
Telecom Head End Room	1	200	200	
Toilet	1	50	50	
Health Suite				
Waiting/Treatment	1	180	180	
Office	1	120	120	
Cots	1	75	150	2 separated by curtain
Storage	1	25	25	
Toilet	1	50	50	
Book Storage	1	300	300	
Supply Storage	1	150	150	
Staff Lounge	1	600	600	Includes staff toilet
Parent Resource Center	1	600	600	
Student Services Suite				
Attendance/Registrar	1	200	200	
Counselor	2	150	300	
Records storage	1	200	200	
Conference Rm	1	175	175	
Total			4,980	

ENTRANCE LOBBY

M-AD-1



PROGRAM ACTIVITIES:

- Check-in/out visitors
- Monitor main entrance to school
- Workstation for security officer

SPATIAL RELATIONSHIPS:

- A portion of the lobby
- Adjacent to Welcome Center

ENVIRONMENTAL CONSIDERATIONS:

- Uniform lighting with accent lighting as appropriate
- Environmental sound control:
Wall minimum: STC 45
Ceiling minimum: CAC 35
- Electrical outlets for equipment
- Provide exterior canopies at entrances
- Windows to provide ample natural light

CAPACITY:

- Security officer

ANCILLARY SPACES:

- Welcome Center (M-AD-2)

NOTES:

1. Loose furnishings and features shown represent one of many possible arrangements.

Educational Specifications for MacFarland Middle School

ENTRANCE LOBBY

M-AD-1

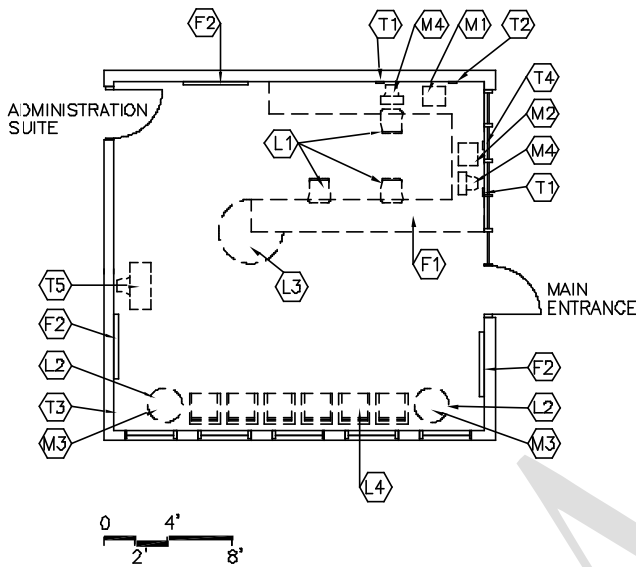
	Spec. Ref.#		Spec. Ref.#
<u>Finishes¹:</u>		<u>Features¹:</u>	
Flooring:		Fixed Equipment:	
Fritz tile	096519	F1 Display cases	101100
Base:		<u>Fire Suppression:</u>	Div. 21
Terrazzo	096613	Fire suppression system	
Resilient base	096519	<u>Plumbing:</u>	
Ceiling:		N/A	
Painted, portland cement plaster	092400 / 099123	<u>HVAC:</u>	Div. 23
Suspended, acoustical	096519	Supply/return air system	
Walls:		<u>Electrical:</u>	Div. 26
Painted concrete masonry		Single-level switching	
Units	042000 / 099123	Fluorescent lighting	
<u>Loose Furnishings:</u>		Illumination level: See Table 7600-16	
L1 Electronic bulletin board		Duplex receptacles	
		TVSS protected quad receptacle	
		adjacent to data port	
		Central sound system	
		Clock	
		<u>Electronic Safety and Security:</u>	Div. 28
		Life safety devices per code	
		<u>Miscellaneous:</u>	
		M1 Metal detector	
		M2 X-ray equipment	

NOTES:

1. Finishes/Features: Refer to Chapter 8 for specification references.

WELCOME CENTER

M-AD-2



GOAL:

- To provide a space designed to help students and the public feel welcome and to provide easily accessed information

PROGRAM ACTIVITIES:

- Greeting visitors
- Waiting for students or staff
- Student waiting/pick up area
- Workstation for administrative assistant

SPATIAL RELATIONSHIPS:

- Located within the main administrative area
- Centrally located to administrative area
- Near public restrooms
- Maximize view to the exterior and lobby

ENVIRONMENTAL CONSIDERATIONS:

- Uniform lighting, areas of soft lighting
- Environmental sound control:
 - Wall minimum: STC 45
 - Ceiling minimum: CAC 35
- Adequate ventilation
- Electrical outlets for equipment
- Administration areas should be zoned for year around use

CAPACITY:

- Administrative assistant
- Visitors/parents
- Students

SIZE:

- Varies, see table

ANCILLARY SPACE:

N/A

NOTES:

1. Loose furnishings and features shown represent one of many possible arrangements.

Educational Specifications for MacFarland Middle School

WELCOME CENTER M-AD-2

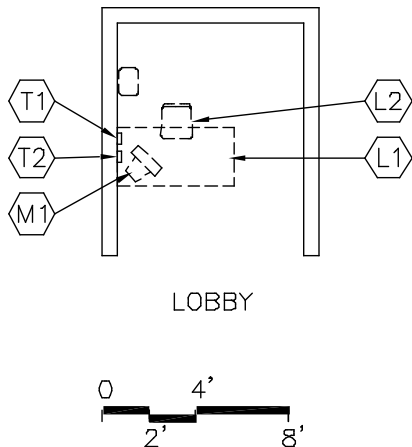
<u>Finishes¹:</u>	<u>Spec. Ref.#</u>	<u>Features¹:</u>	<u>Spec. Ref.#</u>
Flooring:		Fixed Equipment:	
Carpet	096816	F1 Reception counter	064123
		F2 Tack board (12 LF)	101100
Base:			
Resilient base	096519		
Ceiling: (8' high minimum)		<u>Fire Suppression:</u>	Div. 21
Suspended, acoustical	095113	Fire suppression system	
Walls:		<u>Plumbing:</u>	
Painted gypsum wallboard over metal studs	092116 / 099123	N/A	
<u>Loose Furnishings:</u>		<u>HVAC:</u>	Div. 23
L1 2 ergonomic task chairs		Supply/return air system	
L2 2 end tables		Independent temperature control	
L3 Information kiosk/display			
L4 4-6 lounge chairs		<u>Electrical:</u>	Div. 26
		Duplex receptacles	
<u>Miscellaneous:</u>		TVSS protected quad receptacle adjacent to each data port	
M1 Fax		Single-level switching	
M2 Printer		Fluorescent lighting	
M3 Table lamps		Illumination level: See Table 7600-16	
M4 2 computers		Central sound system	
		<u>Communications:</u>	Div. 27
		T1 2 voice ports and phones at workstations	
		T2 Fax port	
		T3 Voice port and phone at waiting area	
		T4 1 data port for printer	
		<u>Electronic Safety and Security:</u>	Div. 28
		Life safety devices per code	

NOTES:

1. Finishes/Features: Refer to Chapter 8 for specification references.

SECURITY AREA

M-AD-3



GOAL:

- To serve as a check-in and checkpoint for non-school visitors

PROGRAM ACTIVITIES:

- Check-in/out visitors
- Monitor main entrance to school
- Workstation for security officer

SPATIAL RELATIONSHIPS:

- Adjacent to each entrance lobby / security checkpoint

ENVIRONMENTAL CONSIDERATIONS:

- Uniform lighting
- Environmental sound control:
Wall minimum: STC 45
Ceiling minimum: CAC 35
- Recessed electrical outlets located in the floor

CAPACITY:

- Security officer

SIZE:

- 100 SF

ANCILLARY SPACE:

N/A

NOTES:

2. Loose furnishings and features shown represent one of many possible arrangements.
2. Note: It may be required to have more than one desk location at each checkpoint for each security checkpoint of the school.

Educational Specifications for MacFarland Middle School

SECURITY AREA M-AD-3

<u>Finishes¹:</u>	<u>Spec. Ref.#</u>	<u>Features¹:</u>	<u>Spec. Ref.#</u>
Flooring: Coordinate with entrance lobby finishes		Fixed Equipment: N/A	
Base: Coordinate with entrance lobby finishes		<u>Fire Suppression:</u> Fire suppression system	Div. 21
Ceiling: Coordinate with entrance lobby finishes		<u>Plumbing:</u> N/A	
Walls: Coordinate with entrance lobby finishes		<u>HVAC:</u> Div. 23 Supply/return air system Independent temperature control	
<u>Loose Furnishings:</u> L1 Desk with lockable file drawer and pencil drawer L2 Ergonomic task chair		<u>Electrical:</u> Div. 26 Duplex receptacles TVSS protected quad receptacle adjacent to each data and video port Multilevel switching Fluorescent lighting Clock Central sound system	
		<u>Communications²:</u> T1 Voice port and phone T2 Data port near workstation	Div. 27
		<u>Electronic Safety and Security:</u> Life safety devices per code	Div. 28
		<u>Miscellaneous:</u> M1 Computer	

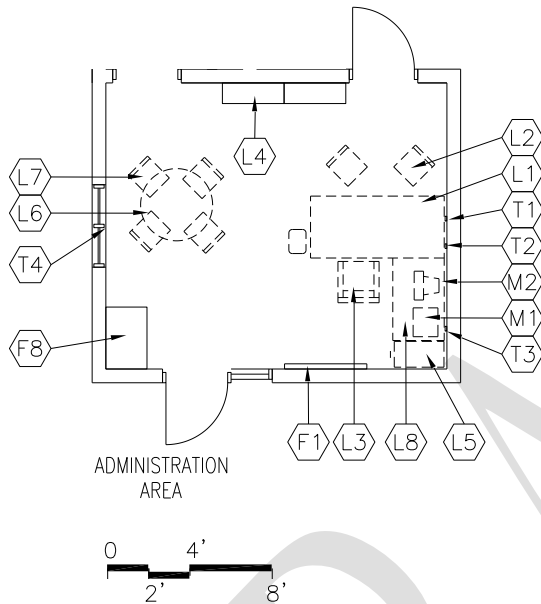
NOTES:

1. Finishes/Features: Refer to Chapter 8 for specification references.

Educational Specifications for MacFarland Middle School

PRINCIPAL'S OFFICE

M-AD-5



GOAL:

- To provide an office for the principal to give instructional leadership in a personal and organized environment for students, staff, and community

PROGRAM ACTIVITIES:

- Conferences with students, parents, teachers, staff, and visitors
- Curriculum development
- Research and planning
- Telephone communications
- Dealing with personnel issues
- Coordination of school and support services

SPATIAL RELATIONSHIPS:

- Near building entrance
- Near Administrative Assistant
- Adjacent and access to Conference Room
- Door not facing Health Clinic

ENVIRONMENTAL CONSIDERATIONS:

- Uniform lighting, appropriate to task
- Environmental sound control:
 - Wall minimum: STC 45
 - Ceiling minimum: CAC 35
- Electrical outlets for equipment
- Windows to provide natural light
- One area should be child-scaled and friendly for working with individual students
- Back door to secondary corridor, desirable
- Auditory privacy

CAPACITY:

- Principal

SIZE:

- Varies, see table

ANCILLARY SPACES:

- Conference Room (M-AD-4)
- Individual Restroom

NOTES:

1. Loose furnishings and features shown represent one of many possible arrangements.

Educational Specifications for MacFarland Middle School

PRINCIPAL'S OFFICE

M-AD-5

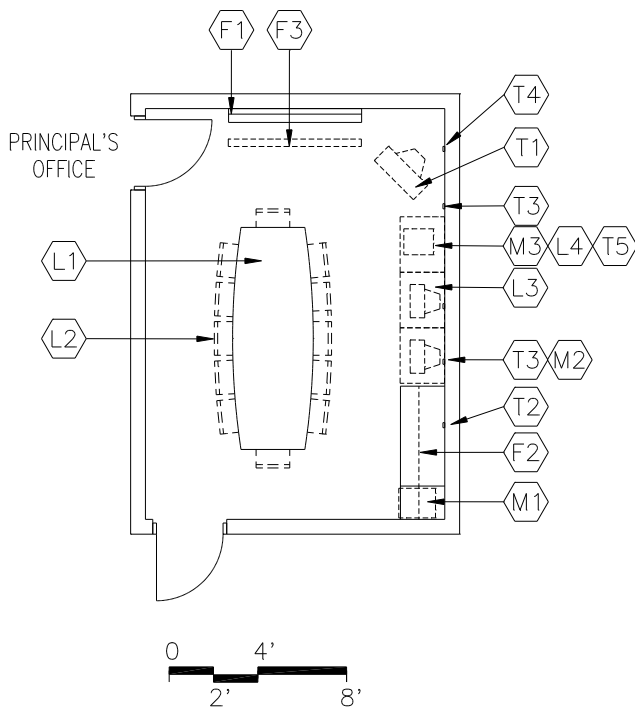
<u>Finishes¹:</u>	<u>Spec. Ref.#</u>	<u>Features¹:</u>	<u>Spec. Ref.#</u>
<u>Flooring:</u>		<u>Fixed Equipment:</u>	
Office: Carpet	096816	F1 Tack board (4 LF)	101100
Toilet: Ceramic tile	093013	F7 Coat hook	102800
		F8 Casework:	
<u>Base:</u>		Teacher wardrobe	103200
Resilient base	096816		
Toilet: Ceramic tile base	093013	<u>Fire Suppression:</u>	Div. 21
		Fire suppression system	
<u>Ceiling:</u> (8' high minimum)			
Suspended, acoustical	095113	<u>Plumbing:</u>	Div. 22
		None	
<u>Walls:</u>			
Painted gypsum wallboard over metal studs	092116 / 099123	<u>HVAC:</u>	Div. 23
		Supply/return air system	
<u>Loose Furnishings:</u>		Independent temperature control	
L1 Desk		Exhaust air system	
L2 2 visitor chairs			
L3 Ergonomic task chair		<u>Electrical:</u>	Div. 26
L4 Adjustable height bookshelves (12 LF)		Duplex receptacles	
L5 Four-drawer file cabinet		TVSS protected quad receptacle adjacent to each data and video port	
L6 Conference table		Single-level switching	
L7 4 chairs		Fluorescent lighting	
L8 Computer workstation		Illumination level: See Table 7600-16	
		Central sound system	
<u>Miscellaneous:</u>			
M1 Printer		<u>Communications²:</u>	Div. 27
M2 Computer		T1 Voice port and phone	
		T2 Data port near workstation	
		T3 Data port for printer	
		T4 Cable/MATV port	
		<u>Electronic Safety and Security:</u>	Div. 28
		Life safety devices per code	

NOTES:

1. Finishes/Features: Refer to Chapter 8 for specification references.

CONFERENCE ROOM

M-AD-4



GOAL:

- To provide a place for administrative conferences or meetings

PROGRAM ACTIVITY:

- Conferences with staff, students, parents, and visitors

SPATIAL RELATIONSHIPS:

- Near Welcome Center
- Centrally located within Administrative Area
- Adjacent and access to Principal's Office

ENVIRONMENTAL CONSIDERATIONS:

- Uniform lighting, appropriate to task
- Environmental sound control:
Wall minimum: STC 45
Ceiling minimum: CAC 40
- Electrical outlets for equipment
- Windows to provide natural light, desirable
- Auditory privacy

CAPACITY:

- Staff
- Students
- Parents
- Visitors

SIZE:

- Varies, see table

ANCILLARY SPACES:

- Principal's Office (M-AD-5)

NOTES:

1. Loose furnishings and features shown represent one of many possible arrangements.

Educational Specifications for MacFarland Middle School

CONFERENCE ROOM

M-AD-4

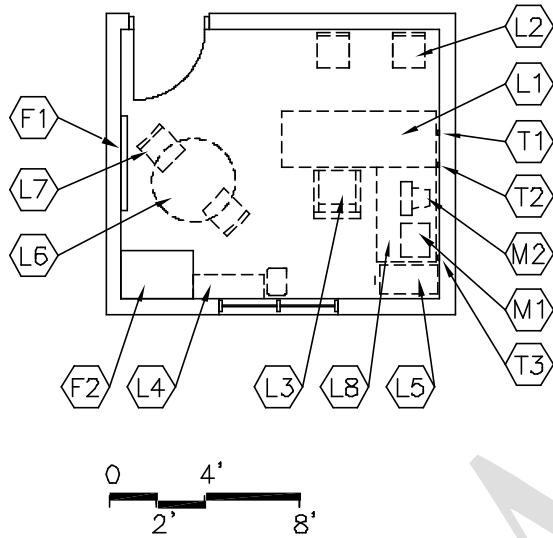
<u>Finishes¹:</u>	<u>Spec. Ref.#</u>	<u>Features¹:</u>	<u>Spec. Ref.#</u>
Flooring:		Fixed Equipment:	
Carpet	096816	F1 Marker board (6 LF)	101100
Base:		F2 Casework:	
Resilient base	096519	Base/wall cabinets (6 LF)	123200
Ceiling: (8' high minimum)		F3 Manual projection screen	115213
Suspended, acoustical	095113	<u>Fire Suppression:</u>	Div. 21
Walls:		Fire suppression system	
Painted gypsum wallboard		<u>Plumbing:</u>	
over metal studs	092116 / 099123	N/A	
<u>Loose Furnishings:</u>		<u>HVAC:</u>	Div. 23
L1 Conference table		Supply/return air system	
L2 12 chairs		Independent temperature control	
L3 2 computer workstations		<u>Electrical:</u>	Div. 26
L4 Printer table		Duplex receptacles	
<u>Miscellaneous:</u>		TVSS protected quad receptacle adjacent to each data and video port	
M1 Under-counter refrigerator		Multilevel switching	
M2 2 computers		Fluorescent lighting	
M3 Printer		Illumination level: See Table 7600-16	
		Clock	
		Central sound system	
		<u>Communications²:</u>	Div. 27
		T1	
		and bracket	
		T2 Voice port and phone	
		T3 2 data ports	
		T4 Cable/MATV port	
		T5 1 data port for printer	
		<u>Electronic Safety and Security:</u>	Div. 28
		Life safety devices per code	

NOTES:

1. Finishes/Features: Refer to Chapter 8 for specification references.

ASSISTANT PRINCIPAL'S OFFICE

M-AD-6



GOAL:

- To provide an office for the assistant principal to perform administrative functions

PROGRAM ACTIVITIES:

- Conferences with parents
- Student interaction
- Conferences with individual teachers or small groups
- Telephone communications (private)
- Research and planning
- Coordination of school and support services

SPATIAL RELATIONSHIPS:

- May be located near Academic Core Area for supervision or in administration suite

ENVIRONMENTAL CONSIDERATIONS:

- Uniform lighting
- Environmental sound control:
Wall minimum: STC 45
Ceiling minimum: CAC 35
- Electrical outlets for equipment
- Windows to provide natural light
- Auditory privacy

CAPACITY:

- Assistant principal

SIZE:

- 150 SF

ANCILLARY SPACES:

N/A

NOTES:

1. Loose furnishings and features shown represent one of many possible arrangements.

Educational Specifications for MacFarland Middle School

ASSISTANT PRINCIPAL'S OFFICE M-AD-6

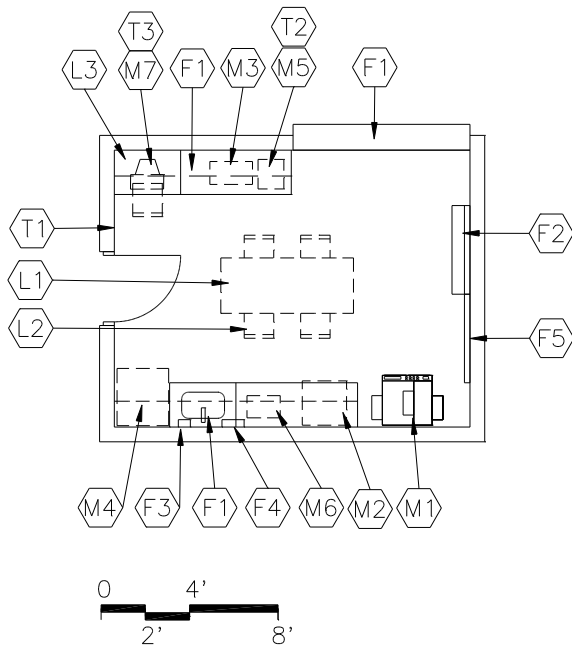
<u>Finishes¹:</u>	<u>Spec. Ref.#</u>	<u>Features¹:</u>	<u>Spec. Ref.#</u>
Flooring: Carpet	096816	Fixed Equipment: F1 Tack board (4 LF)	101100
Base: Resilient base	096519	F2 Casework: Teacher wardrobe	103200
Ceiling: (8' high minimum) Suspended, acoustical	095113	<u>Fire Suppression:</u> Fire suppression system	Div. 21
Walls: Painted gypsum wallboard over metal studs	092116 / 099123	<u>Plumbing:</u> N/A	
<u>Loose Furnishings:</u> L1 Desk L2 2 visitor chairs L3 Ergonomic task chair L4 Adjustable height bookshelves (12 LF) L5 Four-drawer file cabinet L6 Conference table L7 2 chairs L8 Computer workstation		<u>HVAC:</u> Supply/return air system Independent temperature control	Div. 23
		<u>Electrical:</u> Duplex receptacles TVSS protected quad receptacle adjacent to data and video port Single-level switching Fluorescent lighting Central sound system	Div. 26
		<u>Communications:</u> T1 Voice port and phone T2 Data port near workstation T3 Data port for printer	Div. 27
		<u>Electronic Safety and Security:</u> Life safety devices per code	Div. 28
		<u>Miscellaneous:</u> M1 Printer M2 Computer	

NOTES:

1. Finishes/Features: Refer to Chapter 8 for specification references.

ADMINISTRATIVE WORKROOM

M-AD-8



GOAL:

- To provide an area for office production activities

PROGRAM ACTIVITIES:

- Copying
- Collating
- Sorting of files
- Preparing communications for mailing
- Binding reports
- Telephone communications

SPATIAL RELATIONSHIPS:

- Near Welcome Center
- Adjacent to Mailroom (connects via mail slots)

ENVIRONMENTAL CONSIDERATIONS:

- Uniform lighting, appropriate to task
- Environmental sound control:
 - Wall minimum: STC 45
 - Ceiling minimum: CAC 35
- Adequate ventilation
- Electrical outlets for equipment
- Organize for efficient work flow and sufficient clearance for several people to work at one time

CAPACITY:

- Secretaries and administrators
- Volunteers
- Staff

SIZE:

- 200 SF

ANCILLARY SPACES:

- N/A

NOTES:

1. Loose furnishings and features shown represent one of many possible arrangements.

Educational Specifications for MacFarland Middle School

ADMINISTRATIVE WORKROOM

M-AD-8

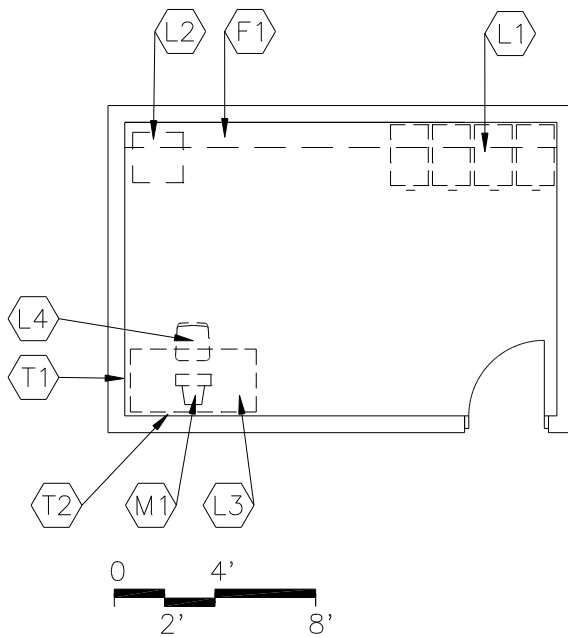
	Spec. Ref.#		Spec. Ref.#
<u>Finishes¹:</u>		<u>Features¹:</u>	
Flooring:		Fixed Equipment:	
Vinyl composition tile	096519	F1 Casework:	123200
		Base/wall cabinets and shelving	
Base:		F2 Marker board (4 LF)	101100
Resilient base	096519	F3 Soap dispenser	102800
		F4 Towel dispenser	102800
Ceiling: (8' high minimum)		F5 Tack board (4 LF)	101100
Suspended, acoustical	095113		
Walls:		<u>Fire Suppression:</u>	Div. 21
Painted gypsum wallboard over metal studs	092116 / 099123	Fire suppression system	
<u>Loose Furnishings:</u>		<u>Plumbing:</u>	Div. 22
L1 Work table		Plumbing connections	
L2 4 chairs		Hook-up for ice maker, sink, single/deep bowl	
L3 Computer workstation			
<u>Miscellaneous:</u>		<u>HVAC:</u>	Div. 23
M1 Copier		Supply/return air system	
M2 Paper cutter		Independent temperature control	
M3 Laminating machine			
M4 Refrigerator with ice maker		<u>Electrical:</u>	Div. 26
M5 Printer		Duplex receptacles	
M6 Microwave		Raceway above countertop	
M7 Computer		TVSS protected quad receptacle adjacent to each data port	
<u>Communications²:</u>	Div. 27	Single-level switching	
T1 Voice port and phone		Fluorescent lighting	
T2 Data port for printer		Illumination level: See Table 7600-16	
T3 Data port near workstation		Dedicated receptacle for copier	
<u>Electronic Safety and Security:</u>	Div. 28	Clock	
Life safety devices per code		Central sound system	

NOTES:

1. Finishes/Features: Refer to Chapter 8 for specification references.

RECORDS ROOM

M-AD-10



GOAL:

- To provide secure, fireproof, and adequate storage for money, records, and other valuable items

PROGRAM ACTIVITIES:

- Storing of money and other valuable items
- Storage of files and records

SPATIAL RELATIONSHIPS:

- Adjacent and access to Administrative Workroom
- Near Data Entry Office

ENVIRONMENTAL CONSIDERATIONS:

- Uniform lighting
- Security

CAPACITY:

- Secretaries
- Staff

SIZE:

- Varies, see table

ANCILLARY SPACE:

- Administrative Workroom (M-AD-8)

NOTES:

1. Loose furnishings and features shown represent one of many possible arrangements.

Educational Specifications for MacFarland Middle School

RECORDS ROOM

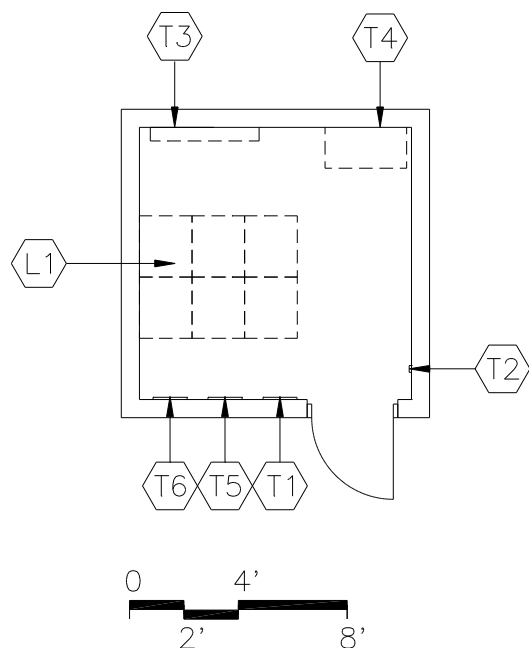
M-AD-10

	Spec. Ref.#		Spec. Ref.#
<u>Finishes</u> ¹ :		<u>Features</u> ¹ :	
Flooring:		Fixed Equipment:	
Vinyl composition tile	096519	F1 Casework:	
		Wall shelving	123200
Base:		<u>Fire Suppression</u> :	Div. 21
Resilient base	096519	Fire suppression system	
Ceiling:		<u>Plumbing</u> :	
Suspended, acoustical	095113	N/A	
Walls:		<u>HVAC</u> :	Div. 23
Painted concrete masonry units	042000 / 099123	Exhaust air system	
<u>Loose Furnishings</u> :		<u>Electrical</u> :	Div. 26
L1 4, four-drawer file cabinets (fireproof)		Duplex receptacles	
L2 Small safe		TVSS protected quad receptacle	
L3 Small table		adjacent to each data port	
L4 Chair		Single-level switching	
		Fluorescent lighting	
		Illumination level: See Table 7600-16	
		<u>Communications</u> :	Div. 27
		T1 Voice port and phone	
		T2 Data port	
		<u>Electronic Safety and Security</u> :	Div. 28
		Life safety devices per code	
		<u>Miscellaneous</u> :	
		M1 Computer	

NOTES:

1. Finishes/Features: Refer to Chapter 8 for specification references.

**TELECOM HEAD END ROOM
M-AD-11**



CAPACITY:

- 1-2 staff members

SIZE:

- Varies, see table

ANCILLARY SPACES:

N/A

GOALS:

- To provide a secure area to serve as the information hub of the school. File servers will serve the building's computer network
- To provide satellite up and down links that will send and receive voice, video, and data
- Location of cable TV input and output
- All areas of the school are to be wired to this area

PROGRAM ACTIVITIES:

- Voice, video, data reception, and distribution
- Security system location
- Network management
- Telephone wiring entry and distribution
- Cable and CCTV reception and broadcasting

SPATIAL RELATIONSHIPS:

- May also be located in Media Center

ENVIRONMENTAL CONSIDERATIONS:

- Adequate power supply will be required and auxiliary UPS power for back-up. (Quality of power is important.)
- Dedicated electrical circuitry
- Air conditioning dedicated to this space
- Adequate ventilation
- Access to ceiling and walls for modifications to systems and wiring
- Security of door

NOTES:

1. Loose furnishings and features shown represent one of many possible arrangements.

Educational Specifications for MacFarland Middle School

TELECOM HEAD END ROOM M-AD-11

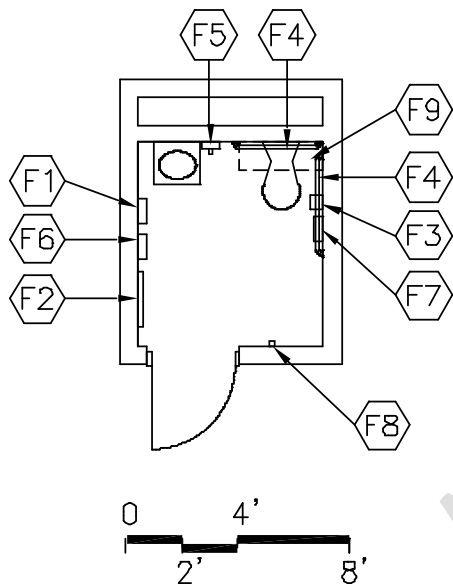
<u>Finishes</u> ¹ :	Spec. Ref. #	<u>Features</u> ¹ :	Spec. Ref.#
Flooring: Vinyl composition tile	096519	<u>Fire Suppression:</u> Fire suppression system	Div. 21
Base: Resilient base	096519	<u>Plumbing:</u> N/A	
Ceiling: (8' high minimum) Suspended, acoustical	095113	<u>HVAC:</u> Div. 23 Supply/return air system Independent, packaged system	
Walls: Painted concrete masonry units 042000 / 099123		<u>Electrical:</u> Duplex receptacles Quad receptacles for electronic systems Single-level switching Fluorescent lighting 16500 Illumination level: See Table 7600-16 Central sound system	Div. 26
<u>Loose Furnishings:</u> L1 6-8 racks		<u>Communications:</u> T2 Voice port and phone T3 Telephone switchgear T4 Video network control T5 Satellite dish connection T6 Satellite and cable system controls access	Div. 27
		<u>Electronic Safety and Security:</u> Life safety devices per code	Div. 28 283111
		<u>Miscellaneous:</u> N/A	

NOTES:

1. Finishes/Features: Refer to Chapter 8 for specification references.

STAFF TOILET

M-AD-13



GOAL:

- To provide a safe and clean toileting area for staff

PROGRAM ACTIVITIES:

- Toileting
- Hand washing

SPATIAL RELATIONSHIPS:

- Located within Administrative Suite

ENVIRONMENTAL CONSIDERATIONS:

- Uniform lighting
- Environmental sound control:
Wall minimum: STC 45
Ceiling minimum: CAC 35
- Moisture- and stain- resistant finishes
- Adequate exhaust/ventilation

CAPACITY:

- Staff

SIZE:

- 50 SF

ANCILLARY SPACES:

N/A

NOTES:

1. Extend walls above ceiling to deck above for security and acoustical reasons.
2. Provide staff restrooms for both men and women.
3. Each pair of staff restrooms should be distributed throughout the building at appropriate locations.

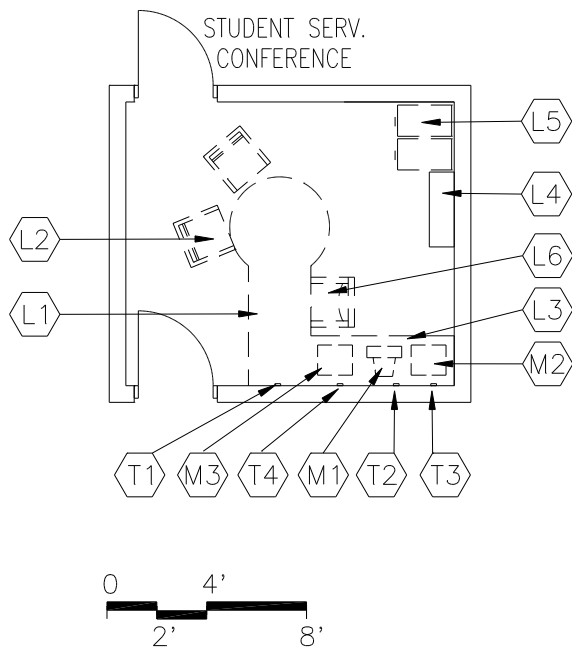
Educational Specifications for MacFarland Middle School

STAFF TOILET M-AD-13

	Spec. Ref.#		Spec. Ref.#
<u>Finishes¹:</u>		<u>Features¹:</u>	
Flooring:		Fixed Equipment:	
Ceramic tile	093013	F1 Towel dispenser	102800
		F2 24" x 60" mirror	102800
Base:		F3 Toilet tissue holder	102800
Ceramic tile base	093013	F4 36" and 42" grab bars	102800
		F5 Soap dispenser	102800
Ceiling:		F6 Sanitary dispenser	102800
Suspended, acoustical	095113	F7 Sanitary disposal	102800
		F8 Coat hook	102800
Walls:		F9 Casework:	
Painted concrete masonry units		Wall cabinet	123200
	042000 / 099123		
<u>Loose Furnishings:</u>		<u>Fire Suppression:</u>	Div. 21
N/A		Fire suppression system	
		<u>Plumbing:</u> Div. 22	
		Wall-mounted water closet	
		Wall-mounted lavatory	
		Plumbing connections	
		Floor drain	
		<u>HVAC:</u> Div. 23	
		Exhaust air system	
		Supplemental heat as required	
		15940	
		<u>Electrical:</u> Div. 26	
		Duplex receptacles	
		Single-level switching	
		Fluorescent lighting	
		<u>Electronic Safety and Security:</u>	
		N/A	
		<u>Miscellaneous:</u>	
		N/A	

NOTES:

1. Finishes/Features: Refer to Chapter 8 for specification references.



GOAL:

- To provide a space from which support staff can provide a variety of services to students and their families

PROGRAM ACTIVITIES:

- Group and individual counseling
- Student assessment

SPATIAL RELATIONSHIPS:

- Adjacent and access to Student Services Conference Room
- Near Welcome Center
- Readily accessible to students

ENVIRONMENTAL CONSIDERATIONS:

- Uniform lighting, appropriate to task
- Environmental sound control:
 - Walls minimum: STC 45
 - Ceiling minimum: CAC 35
- Electrical outlets for equipment
- Auditory privacy
- Windows to provide natural light, if possible

CAPACITY:

- Counselor
- Students
- Parents
- Support services personnel
- Specialized student services

SIZE:

- 150 SF

ANCILLARY SPACE:

- Student Services Conference (M-AD-13)

NOTES:

1. Loose furnishings and features shown represent one of many possible arrangements.

Educational Specifications for MacFarland Middle School

COUNSELOR'S OFFICE M-AD-14

<u>Finishes¹:</u>	<u>Spec. Ref.#</u>	<u>Features¹:</u>	<u>Spec. Ref.#</u>
Flooring: Carpet	096816	Fixed Equipment: N/A	
Base: Resilient base	096519	<u>Fire Suppression:</u> Fire suppression system	Div. 21
Ceiling: (8' high minimum) Suspended, acoustical	095113	<u>Plumbing:</u> N/A	
Walls: Painted gypsum wallboard over metal studs	092116 / 099123	<u>HVAC:</u> Supply/return air system Independent temperature control	Div. 23
<u>Loose Furnishings:</u> L1 Desk L2 2 visitor chairs L3 Computer desk return L4 Adjustable height bookshelves (12 LF) L5 2, four-drawer file cabinets L6 Ergonomic task chair		<u>Electrical:</u> Duplex receptacles Single-level switching Fluorescent lighting Illumination level: See Table 7600-16 Central sound system	Div. 26
		<u>Communications:</u> T1 Voice port and phone T2 Data port near workstation T3 Data port for printer T4 Data port for fax	Div. 27
		<u>Electronic Safety and Security:</u> Life safety devices per code	Div. 28
		<u>Miscellaneous:</u> M1 Computer M2 Printer M3 Fax	

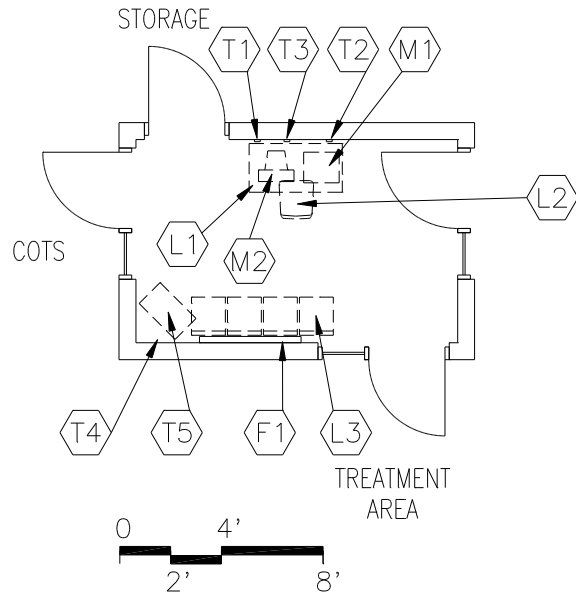
NOTES:

1. Finishes/Features: Refer to Chapter 8 for specification references.

Educational Specifications for MacFarland Middle School

OFFICE / WAITING AREA – (Combine w/ treatment area)

Health Suite
M-AD-17



GOAL:

- Administrative and waiting area for health services

PROGRAM ACTIVITIES:

- Waiting area for students being picked up by parent or guardian
- Administrative activities by school nurse

SPATIAL RELATIONSHIPS:

- Adjacent and access to Treatment Area
- Adjacent and access to Cots
- Adjacent and access to Storage
- First space one enters in Health Suite

ENVIRONMENTAL CONSIDERATIONS:

- Uniform lighting
- Environmental sound control:
 - Wall minimum: STC 45
 - Ceiling minimum: CAC 35
- Visual access to Welcome Center or Main Corridor
- Visual and Auditory privacy

CAPACITY:

- Staff
- Students
- Parents
- Visitors

SIZE:

- Varies, see table

ANCILLARY SPACES:

- Treatment Area (M-AD-18)
- Cots (M-AD-19)
- Storage (M-AD-20)

NOTES:

1. Loose furnishings and features shown represent one of many possible arrangements.

Educational Specifications for MacFarland Middle School

OFFICE / WAITING AREA
Health Suite
M-AD-17

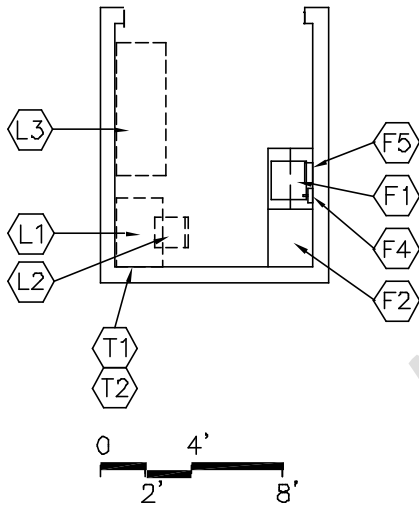
<u>Finishes¹:</u>	<u>Spec. Ref.#</u>	<u>Features¹:</u>	<u>Spec. Ref.#</u>
Flooring: Vinyl composition tile	096519	Fixed Equipment: F1 Tack board (4 LF)	101100
Base: Resilient base	096519	<u>Fire Suppression:</u> Fire suppression system	Div. 21
Ceiling: (8' high minimum) Suspended, acoustical	095113	<u>Plumbing:</u> N/A	
Walls: Painted gypsum wallboard over metal studs	092116 / 099123	<u>HVAC:</u> Div. 23 Supply/return air system	
<u>Loose Furnishings:</u> L1 Desk L2 Ergonomic chair L3 4 visitor chairs		<u>Electrical:</u> Div. 26 Duplex receptacles TVSS protected quad receptacle adjacent to each data port Single-level switching Fluorescent lighting Illumination level: See Table 7600-16 Clock Central sound system	
		<u>Communications:</u> T1 Voice port and phone T2 Data port for printer T3 Data port near workstation T4 Cable/MATV T5	Div. 27
		<u>Electronic Safety and Security:</u> Life safety devices per code	Div. 28
		<u>Miscellaneous:</u> M1 Printer M2 Computer	

NOTES:

1. Finishes/Features: Refer to Chapter 8 for specification references.

TREATMENT AREA -

Health Suite
M-AD-18



GOAL:

- To provide school-based health services

PROGRAM ACTIVITIES:

- First aid
- Consultation with students
- Health screening
- Administrative paperwork
- Medical treatments
- Medication administration
- Student resting while awaiting pick-up by parent or guardian

SPATIAL RELATIONSHIPS:

- Open to Office/Waiting Room

ENVIRONMENTAL CONSIDERATIONS:

- Uniform lighting
- Environmental sound control:
 - Wall minimum: STC 45
 - Ceiling minimum: CAC 35
- Stain-resistant floor covering
- Sink with hot and cold water
- Adequate ventilation
- Electrical outlets for equipment
- Locate away from Administrative Workroom; copier machine interferes with hearing screening
- Auditory and Visual privacy
- Visual access to Office/Waiting Room

CAPACITY:

- 1 staff member/volunteer/nurse
- Students

SIZE:

- 80 SF

ANCILLARY SPACES:

- Office/Waiting Area (M-AD-17)

NOTES:

1. Loose furnishings and features shown represent one of many possible arrangements.

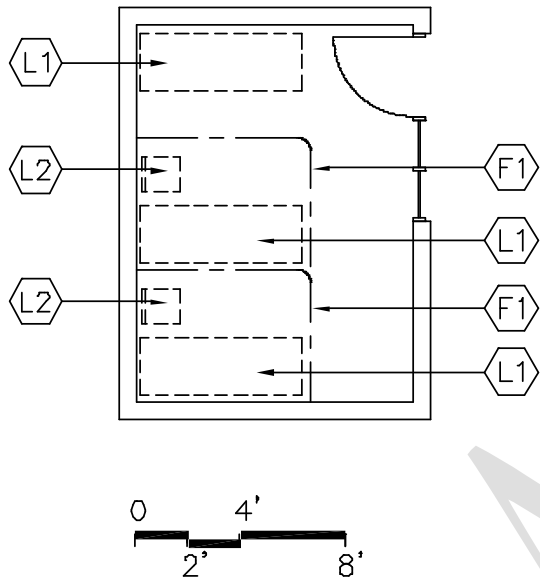
Educational Specifications for MacFarland Middle School

TREATMENT AREA - Health Suite M-AD-18

<u>Finishes¹:</u>	<u>Spec. Ref.#</u>	<u>Features¹:</u>	<u>Spec. Ref.#</u>
Flooring: Vinyl composition tile	096519	Fixed Equipment: F1 Casework: Base/wall cabinets	123200
Base: Resilient base	096519	F2 Casework: Tall storage	123200
Ceiling: (8' high minimum) Suspended, acoustical	095113	F3 Window blinds	122123
		F4 Soap dispenser	102800
		F5 Towel dispenser	102800
Walls: Painted gypsum wallboard over metal studs	092116 / 099123	<u>Fire Suppression:</u> Fire suppression system	Div. 21
<u>Loose Furnishings:</u> L1 Small table L2 Chair L3 Cot or exam table		<u>Plumbing:</u> Div. 22 Plumbing connections Sink	
		<u>HVAC:</u> Div. 23 Supply/return air system	
		<u>Electrical:</u> Div. 26 Duplex receptacles TVSS protected quad receptacle adjacent to each data port Single-level switching Fluorescent lighting Illumination level: See Table 7600-16 Clock Central sound system	
		<u>Communications:</u> T1 Voice port and phone T2 Data port	Div. 27
		<u>Electronic Safety and Security:</u> Life safety devices per code	Div. 28
		<u>Miscellaneous:</u> N/A	

NOTES:

1. Finishes/Features: Refer to Chapter 8 for specification references.



GOAL:

- To provide a place for students and staff to lie down when feeling ill

PROGRAM ACTIVITY:

- A resting place for students and staff to lie down when feeling ill

SPATIAL RELATIONSHIP:

- Located within Health Suite
- Adjacent and access to Office/Waiting Area

ENVIRONMENTAL CONSIDERATIONS:

- Uniform lighting / dimmable lighting
- Environmental sound control:
Wall minimum: STC 45
Ceiling minimum: CAC 35
- Stain-resistant floor covering
- Adequate ventilation
- Auditory and visual privacy
- Visual access to Office/Waiting Area

CAPACITY:

- Staff
- Students

SIZE:

- Varies, see table

ANCILLARY SPACES:

- Office/Waiting Area (M-AD-17)

NOTES:

1. Loose furnishings and features shown represent one of many possible arrangements.
2. Provide a separate cot area for both boys and girls.

Educational Specifications for MacFarland Middle School

COTS
Health Suite
M-AD-19

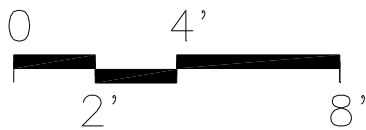
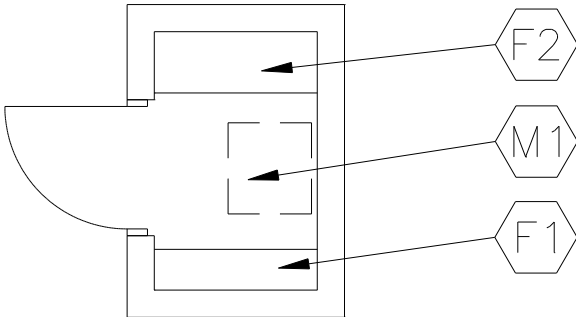
<u>Finishes¹:</u>	<u>Spec. Ref.#</u>	<u>Features¹:</u>	<u>Spec. Ref.#</u>
Flooring: Vinyl composition tile	096519	Fixed Equipment: F1 Cubicle curtains	102123
Base: Resilient base	096519	<u>Fire Suppression:</u> Fire suppression system	Div. 21
Ceiling: (8' high minimum) Suspended, acoustical	095113	<u>Plumbing:</u> N/A	
Walls: Painted gypsum wallboard over metal studs	092116 / 099123	<u>HVAC:</u> Div. 23 Supply/return air system	
<u>Loose Furnishings:</u> L1 2 cots L2 2 chairs		<u>Electrical:</u> Div. 26 Duplex receptacles Single-level switching Fluorescent lighting with dimmers Illumination level: See Table 7600-16 Clock Central sound system	
		<u>Communications:</u> N/A	
		<u>Electronic Safety and Security:</u> Life safety devices per code	Div. 28
		<u>Miscellaneous:</u> N/A	

NOTES:

Finishes/Features: Refer to Chapter 8 for specification references.

STORAGE

M-AD-20



GOAL:

- To provide storage for medical supplies and equipment

PROGRAM ACTIVITY:

- Storing equipment, and supplies

SPATIAL RELATIONSHIP:

- Adjacent and access to Office/Waiting

ENVIRONMENTAL CONSIDERATIONS:

- Uniform lighting
- Security of equipment, supplies, and medicines
- Security of door

CAPACITY:

- Staff

SIZE:

- 25 SF

ANCILLARY SPACES:

- Office/Waiting Area (M-AD-17)

NOTES:

1. Loose furnishings and features shown represent one of many possible arrangements.

Educational Specifications for MacFarland Middle School

STORAGE
Health Suite
M-AD-20

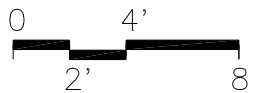
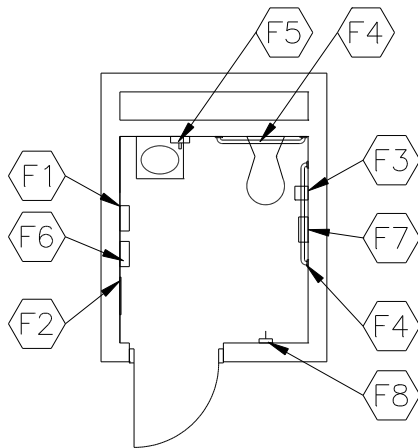
	Spec. Ref.#		Spec. Ref.#
<u>Finishes¹:</u>		<u>Features¹:</u>	
Flooring:		Fixed Equipment:	
Resilient tile flooring	096519	F1 Storage shelving: 12" deep	105613
Base:		F2 Storage shelving: 18" deep	105613
Resilient base	096519		
Ceiling: (8' high minimum)		<u>Fire Suppression:</u>	Div. 21
Suspended, acoustical	095113	Fire suppression system	
Walls:		<u>Plumbing:</u> Div. 22	
Painted concrete masonry units	042000 / 099123	Plumbing connections	
		Hook-up for refrigerator ice maker	
<u>Loose Furnishings:</u>		<u>HVAC:</u> Div. 23	
N/A		Supply/return air system	
		<u>Electrical:</u> Div. 26	
		Duplex receptacles	
		Single-level switching	
		Fluorescent lighting	
		<u>Communications:</u>	
		N/A	
		<u>Electronic Safety and Security:</u>	
		N/A	
		<u>Miscellaneous:</u>	
		M1 Refrigerator (lockable) with ice maker	

NOTES:

1. Finishes/Features: Refer to Chapter 8 for specification references.

TOILET

**Health Suite
M-AD-21**



PROGRAM ACTIVITIES:

- Personal and health needs for the health suite
- Changing clothing

SPATIAL RELATIONSHIP:

- Located within Health Suite

ENVIRONMENTAL CONSIDERATIONS:

- Uniform lighting
- Environmental sound control:
 - Wall minimum: STC 40
 - Ceiling minimum: CAC 35
- Moisture- and stain-resistant finishes
- Adequate exhaust/ventilation

CAPACITY:

- Students
- Staff

SIZE:

- 50 SF

ANCILLARY SPACE:

N/A

NOTES:

1. Loose furnishings and features shown represent one of many possible arrangements.

Educational Specifications for MacFarland Middle School

TOILET
Health Suite
M-AD-21

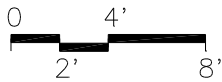
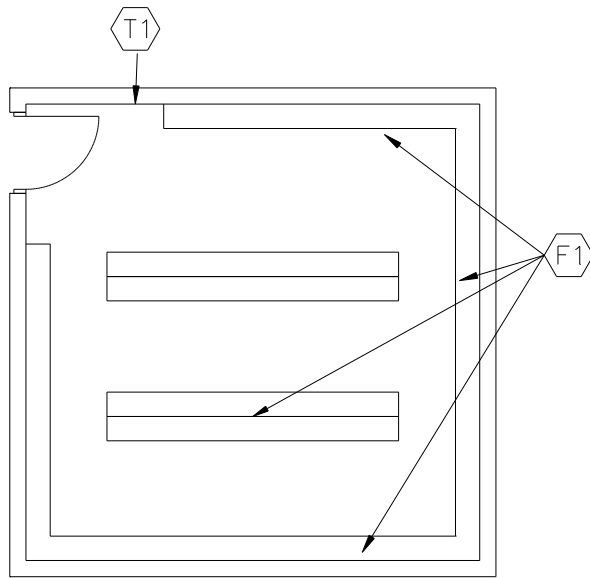
	Spec. Ref.#		Spec. Ref.#
<u>Finishes¹:</u>		<u>Features¹:</u>	
Flooring:		Fixed Equipment:	
Ceramic tile	093013	F1 Towel dispenser	102800
		F2 24" x 60" mirror	102800
Base:		F3 Toilet tissue holder	102800
Ceramic tile base	093013	F4 36" and 42" grab bars	102800
		F5 Soap dispenser	102800
Ceiling:		F6 Sanitary disposal	102800
Suspended, acoustical	095113	F7 Sanitary dispenser	102800
		F8 Coat hook	102800
Walls:		<u>Fire Suppression:</u>	Div. 21
Painted concrete masonry units	042000 / 099123	Fire suppression system	
<u>Loose Furnishings:</u>		<u>Plumbing:</u> Div. 22	
N/A		Wall-mounted water closet	
		Wall-mounted lavatory	
		Plumbing connections	
		Floor drain	
		<u>HVAC:</u> Div. 23	
		Exhaust air system	
		Supplemental heat as required	
		<u>Electrical:</u> Div. 26	
		Duplex receptacles	
		Single-level switching	
		Fluorescent lighting	
		Central sound system	
		<u>Communications:</u>	
		N/A	
		<u>Electronic Safety and Security:</u>	Div. 28
		Life safety devices per code	
		<u>Miscellaneous:</u>	
		N/A	

NOTES:

1. Finishes/Features: Refer to Chapter 8 for specification references.

BOOK STORAGE

M-AD-23



GOAL:

- To provide secure storage for textbooks

PROGRAM ACTIVITY:

- Storage of textbooks

SPATIAL RELATIONSHIP:

- Near Administration

ENVIRONMENTAL CONSIDERATIONS:

- Uniform lighting
- Electrical outlets

CAPACITY:

- Staff

SIZE:

- Varies, see table

ANCILLARY SPACES:

N/A

NOTES:

Loose furnishings and features shown represent one of many possible arrangements.

Educational Specifications for MacFarland Middle School

BOOK STORAGE
Administrative Support
M-AD-23

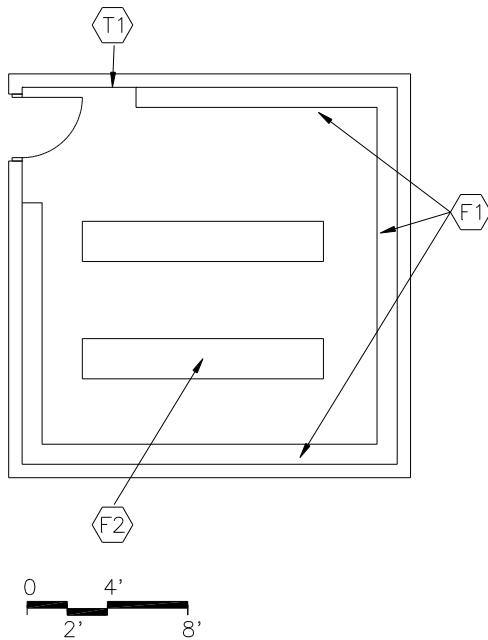
<u>Finishes¹:</u>	<u>Spec. Ref.#</u>	<u>Features¹:</u>	<u>Spec. Ref.#</u>
Flooring: Vinyl composition tile	096519	Fixed Equipment: F1 Storage shelving: 12" deep	105613
Base: Resilient base	096519		
Ceiling (8' high minimum): Suspended, acoustical	095113	<u>Fire Suppression:</u> Fire suppression system	Div. 21
Walls: Painted concrete masonry units	042000 / 099123	<u>Plumbing:</u> N/A	
<u>Loose Furnishings:</u> N/A		<u>HVAC:</u> Div. 23 Supply/return air system	
		<u>Electrical:</u> Div. 26 Duplex receptacles Single-level switching Fluorescent lighting Central sound system TVSS protected quad receptacle adjacent to each data port	
		<u>Communications:</u> T1 Data port	Div. 27
		<u>Electronic Safety and Security:</u> Life safety devices per code	Div. 28
		<u>Miscellaneous:</u> N/A	

NOTES:

Finishes/Features: Refer to Chapter 8 for specification references.

SUPPLY STORAGE

M-AD-24



GOAL:

- To provide secure storage for supplies

PROGRAM ACTIVITY:

- Storage of office and teaching supplies

SPATIAL RELATIONSHIP:

- Near Administration

ENVIRONMENTAL CONSIDERATIONS:

- Uniform lighting
- Electrical outlets

CAPACITY:

- Staff

SIZE:

- Varies, see table

ANCILLARY SPACES:

N/A

NOTES:

Loose furnishings and features shown represent one of many possible arrangements.

Educational Specifications for MacFarland Middle School

SUPPLY STORAGE Administrative Support M-AD-24

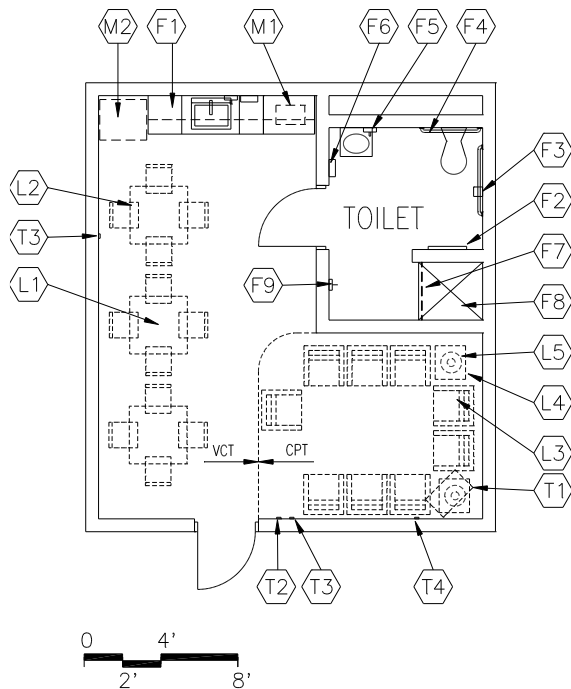
<u>Finishes¹:</u>	<u>Spec. Ref.#</u>	<u>Features¹:</u>	<u>Spec. Ref.#</u>
Flooring: Vinyl composition tile	096519	Fixed Equipment: F1 Storage shelving: 12" deep	105613
Base: Resilient base	096519	F2 Storage shelving: 24" deep	105613
Ceiling (8' high minimum): Suspended, acoustical	095113	<u>Fire Suppression:</u> Fire suppression system	Div. 21
Walls: Painted concrete masonry units	042000 / 099123	<u>Plumbing:</u> N/A	
<u>Loose Furnishings:</u> N/A		<u>HVAC:</u> Div. 23 Supply/return air system	
		<u>Electrical:</u> Div. 26 Duplex receptacles Single-level switching Fluorescent lighting Central sound system	
		<u>Communications:</u> T1 Data port	Div. 27
		<u>Electronic Safety and Security:</u> Life safety devices per code	Div. 28
		<u>Miscellaneous:</u> N/A	

NOTES:

Finishes/Features: Refer to Chapter 8 for specification references.

STAFF LOUNGE

M-AD-25



GOAL:

- To provide an area for staff dining and relaxing

PROGRAM ACTIVITIES:

- Staff dining
- Relaxation

SPATIAL RELATIONSHIPS:

- Near Classrooms
- Access to Main Corridor
- May be divided among floors

ENVIRONMENTAL CONSIDERATIONS:

- Uniform lighting, appropriate to task
- Environmental sound control:
Wall minimum: STC 45
Ceiling minimum: CAC 40
- Electrical outlet for equipment
- Windows to provide natural light, desirable

CAPACITY:

- Staff

SIZE:

- Varies, see table

ANCILLARY SPACES:

N/A

NOTES:

1. Loose furnishings and features shown represent one of many possible arrangements.

Educational Specifications for MacFarland Middle School

STAFF LOUNGE
Administrative Support
M-AD-25

	Spec. Ref.#		Spec. Ref.#
<u>Finishes¹:</u>		<u>Features¹:</u>	
Flooring:		Fixed Equipment:	
Vinyl composition tile	096519	F1 Casework:	
Carpet	096816	Base/wall cabinets	123200
Base:		F2 24" X 60" mirror	102800
Resilient base	096519	F3 Toilet tissue dispenser	102800
Ceiling (8' high minimum):		F4 36" and 42" grab bars	102800
Suspended, acoustical	095113	F5 Soap dispenser	102800
Walls:		F6 Towel dispenser	102800
Painted gypsum wallboard		F7 Shower curtain with rod	102800
over metal studs		F8 ADA shower accessories	102800
092116 / 099123		F9 Coat hook	102800
<u>Loose Furnishings:</u>		<u>Fire Suppression:</u>	Div. 21
L1 3 square tables		Fire suppression system	
L2 10-15 chairs		<u>Plumbing:</u>	Div. 22
L3 8-10 lounge chairs		Plumbing connections	
L4 2 end tables		Hook-ups for ice maker	
L5 2 table lamps		Floor drains - in restroom and shower	
<u>Communications:</u>	Div. 27	<u>HVAC:</u>	Div. 23
T2 Voice port and phone		Supply/return air system	
T3 2 data ports		Exhaust air system	
T4 Cable/MATV port		Independent temperature control	
<u>Miscellaneous:</u>		<u>Electrical:</u>	Div. 26
M1 2 microwaves		Duplex receptacles	
M2 Refrigerator with ice maker		TVSS protected quad receptacle adjacent to each data and video port	
		Multilevel switching	
		Fluorescent lighting	
		Illumination level: See Table 7600-16	
		Clock	
		Central sound system	
		<u>Electronic Safety and Security:</u>	Div. 28
		Life safety devices per code	

NOTES:

1. Finishes/Features: Refer to Chapter 8 for specification references.

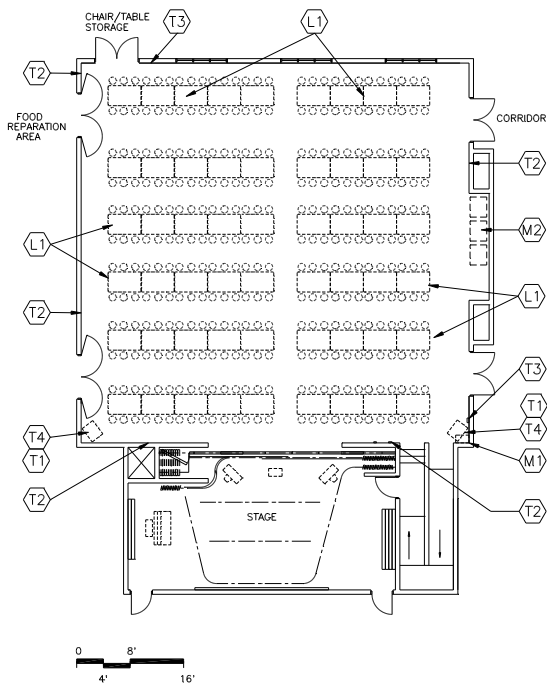
Educational Specifications for MacFarland Middle School

Student Dining & Food Service Space Requirements

Spaces	Suggested			Comments
	Qty.	S.F.	Total	
Student Dining Area/Multi-purpose	1	3,000	3,000	Or 'as is'
Teaching kitchen	1	800	800	
Chair, Table Storage	1	250	250	
Food Prep/Serving	1	700	700	
Dry Storage	1	200	200	
Freezer & Cooler	1	300	300	
Ware Washing	1	100	100	
Toilet/Locker Room	1	125	125	
Paper storage	1	100	100	
Food Service Office	1	100	100	
Total			5,675	

STUDENT DINING AREA / MULTIPURPOSE

M-SD-1



GOALS:

- To provide a pleasant atmosphere for students to eat meals
- To provide a flexible meeting space for groups if needed

PROGRAM ACTIVITIES:

- Student dining
- School and community programs, meetings, and activities

SPATIAL RELATIONSHIPS:

- Adjacent and access to Food Preparation Area
- Adjacent and access to Stage
- Adjacent and access to Chair/Table Storage
- Centrally located to office area, gymnasium, classrooms, and media center
- Near parking and entry to building
- Consider vending machine locations in room layout

ENVIRONMENTAL CONSIDERATIONS:

- Lighting appropriate to tasks
- Adequate ventilation
- Electrical outlets for equipment along perimeter walls and on columns
- Environmental sound control:
Wall minimum: STC 45
Ceiling minimum: CAC 35
- Higher than normal ceiling height
- Cleanable building surfaces
- Windows to provide ample natural light
- Good sight lines to all areas of the room for supervision
- Window treatment to darken room for AV presentation
- Access to drinking fountain

CAPACITY:

- 1/3 of students per lunch period
- 1/3 of staff members per lunch
- Community (after hours)

SIZE:

- Varies, see table

ANCILLARY SPACES

- Chair/Table Storage (M-SD-2)
- Stage (M-SD-3)
- Food Preparation Area (M-SD-4A)

NOTES:

1. Loose furnishings and features shown represent one of many possible arrangements.
2. Typically, students are seated in cafeteria before entering serving line. Students are called by table to serving line

Educational Specifications for MacFarland Middle School

STUDENT DINING AREA / MULTIPURPOSE M-SD-1

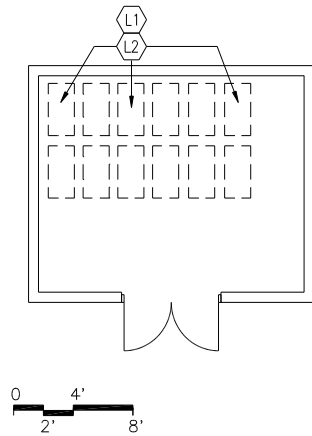
	Spec. Ref.#		Spec. Ref.#
<u>Finishes¹:</u>		<u>Features¹:</u>	
Flooring:		Marker board (16 LF)	
Quartz tile	09665189	Tackboard (16 LF)	
Base:		<u>Fire Suppression:</u>	Div. 21
Resilient base	096519	Fire suppression system	
Ceiling:		<u>Plumbing:</u>	Div. 22
Suspended, acoustical	095113	Electric water cooler	
Walls:		Filter water with bottle refill	
Painted concrete masonry units		<u>HVAC:</u>	Div. 23
042000 / 099123		Supply/return air system	
Acoustical wall treatment	098400	Independent temperature control	
<u>Loose Furnishings:</u>		Air conditioning	
L1 Tables and seating to accommodate 1/3 of school capacity (200 for lunch/300 per assembly)		<u>Electrical:</u>	Div. 26
<u>Miscellaneous:</u>		Duplex receptacles	
M1 Audio system		Vending Machines	
		TVSS protected quad receptacles adjacent to each data and video port	
		Multilevel switching	
		Fluorescent lighting	
		Clock	
		Dining sound system/speakers/podium	
		Central sound system	
		<u>Communications:</u>	Div. 27
		T1 2 cable/MATV ports	
		T2 4 data ports	
		T3 Voice port and phone	
		T4 2 large video ports, monitors	
		Speakers	
		<u>Electronic Safety and Security:</u>	Div. 28
		Life safety devices per code	

NOTES:

1. Finishes/Features: Refer to Chapter 8 for specification references.

CHAIR / TABLE STORAGE

M-SD-2



GOAL:

- To provide convenient storage of dining chairs and tables to be used for meetings and performances

PROGRAM ACTIVITY:

- Storage

SPATIAL RELATIONSHIPS:

- Adjacent and access to Student Dining Area/Multipurpose

ENVIRONMENTAL CONSIDERATIONS:

- Uniform lighting
- Cleanable building surfaces
- Accessibility for moving furniture in and out

CAPACITY:
N/A

SIZE:
• Varies, see table

ANCILLARY SPACES:
• Student Dining Area/Multipurpose (M-SD-1)

NOTES:

1. Loose furnishings and features shown represent one of many possible arrangements.

Educational Specifications for MacFarland Middle School

CHAIR / TABLE STORAGE M-SD-2

<u>Finishes¹:</u>	<u>Spec. Ref.#</u>	<u>Features¹:</u>	<u>Spec. Ref.#</u>
Flooring: Resilient tile flooring	096519	Fixed Equipment: N/A	
Base: Resilient base	096519	Fire Suppression: Fire suppression system	Div. 21
Ceiling: Suspended, acoustical	095113	Plumbing: N/A	
Walls: Painted concrete masonry units	042000 / 099123	HVAC: Div. 23 Supply/return air system	
<u>Loose Furnishings:</u> L1 Chairs L2 Chair dollies		Electrical: Div. 26 Duplex receptacles Single-level switching Fluorescent lighting	
		Communications: N/A	
		Electronic Safety and Security: N/A	
		Miscellaneous: N/A	

NOTES:

1. Finishes/Features: Refer to Chapter 8 for specification references.

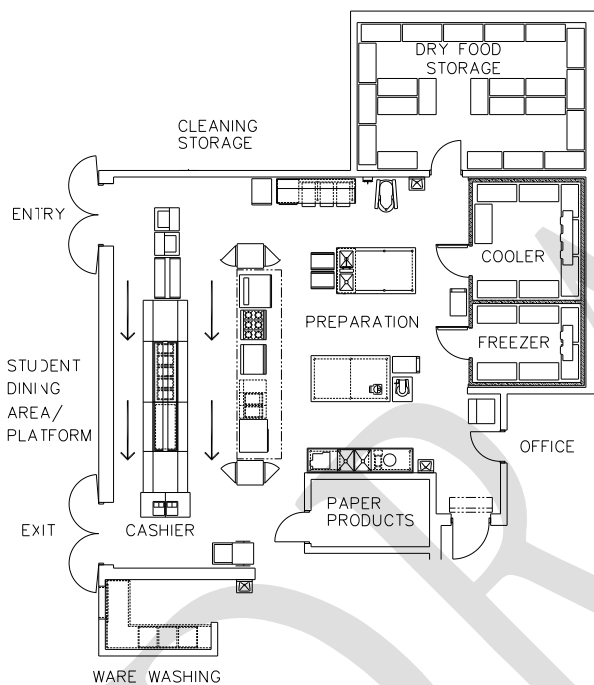
Educational Specifications for MacFarland Middle School

COOKING KITCHEN

This space consists of the following areas:

Food Preparation Area	700
Dry Food Storage	200
Freezer & Cooler	300
Ware Washing	100
Paper Storage	200
Lockers	75
Toilet	50
Food Service Office	100
	1725

A space plate follows for each of these areas.



CAPACITY:

- Students
- Staff
- Community

ANCILLARY SPACES:

- Student Dining Area/Multipurpose (E-SD-1)

GOAL:

- To provide an area for the preparation of student and staff meals

PROGRAM ACTIVITIES:

- Prep food
(food delivered from milk, grocery, and produce vendors)
- Serve food
- Storage
- Point of sale (in the dining area associated with the serving area)

SPATIAL RELATIONSHIPS:

- Near loading dock to permit semi-tractor trailers access to docking and storage areas (site specific)
- Adjacent and access to Student Dining Area/Multipurpose
- Near dumpsters
- Cafeteria serving arrangement

ENVIRONMENTAL CONSIDERATIONS:

- Food service department, public health
- Durable flooring
- Proper ventilation of space to remove cooking odors
- Cleanable building surfaces

Hand sinks in each area of service, production, dishwashing, serving.

Paper towel dispensers need to be uniform with the rest of the school for ordering purposes.

Soap dispensers need to be uniform with schools for ordering purposes.

NOTES:

1. This is an example of a kitchen. Food service equipment will vary from school to school; confirm requirements with District of Columbia Public Schools Food Service Department.

Educational Specifications for MacFarland Middle School

FOOD PREPARATION AREA

CAPACITY:

- Staff

SIZE:

- Varies, see table

GOAL:

- To prepare student meals

PROGRAM ACTIVITIES:

- Prepare food

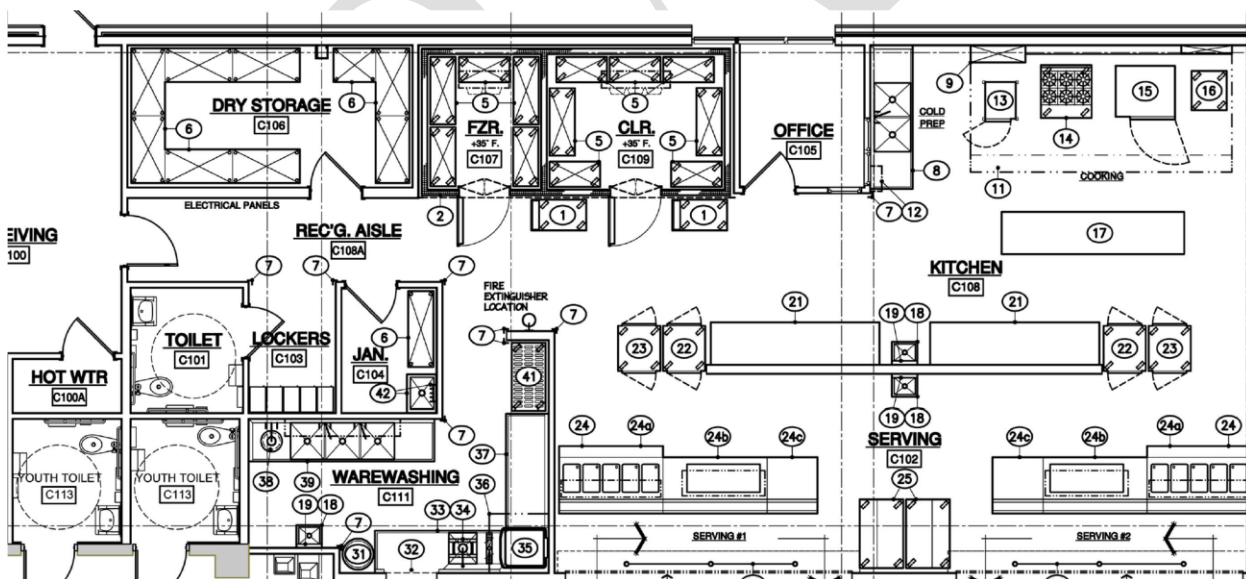
SPATIAL RELATIONSHIPS:

- Adjacent to Student Dining Area/Multipurpose
- Open to Serving Area

ENVIRONMENTAL CONSIDERATIONS:

- Uniform lighting
- Proper ventilation of space to remove cooking odors
- Cleanable building surfaces
- Electrical/plumbing/mechanical connections for food service equipment
- Towel dispensers, Soap dispensers,

This is an example of a preparation area. Food service equipment will vary from school to school; confirm requirements with District of Columbia Public Schools Food Service Department.



Educational Specifications for MacFarland Middle School

FOOD PREPARATION AREA

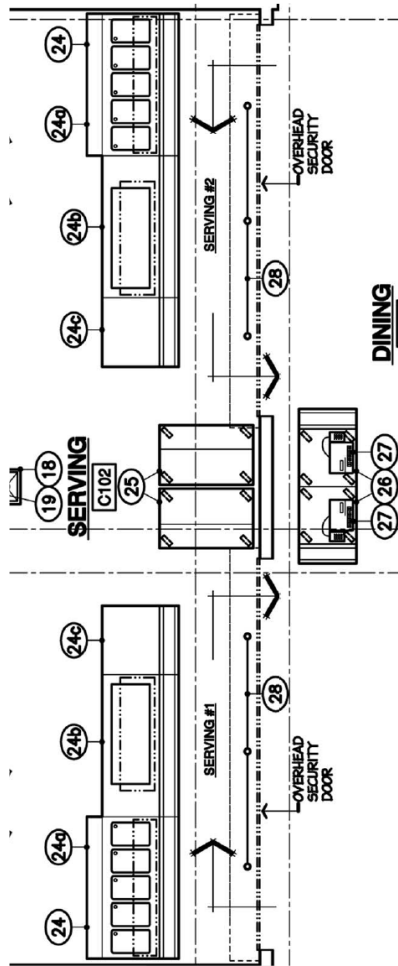
	Spec. Ref.#		Spec.
<u>Finishes¹:</u>			
<u>Flooring:</u>		<u>Ref.#</u>	
Easy clean, non-slip flooring - Single surface poured or rolled flooring		<u>Fire Suppression:</u>	Div. 21
		Fire suppression system	
<u>Base:</u>		<u>Plumbing:</u>	Div. 22
Resilient base	096519	Connections to food service equipment	
<u>Ceiling:</u>		Plumbing and gas connections	
Cleanable, suspended, acoustical	095113	Hand washing lavatory	
		Floor drains	
<u>Walls:</u>		Food preparation sink with adjacent trash bin	
Epoxy-painted concrete masonry units			
Water areas of kitchen, eg. Dish room, pot sink area.	042000 / 099123	<u>HVAC:</u>	Div. 23
		Supply/return air system	
		Independent temperature control	
		Kitchen canopy exhaust system	
		Air conditioning	
<u>Features</u> (Specifications from DCPS):		<u>Electrical:</u>	Div. 26
<u>Equipment:</u>		Duplex receptacles	
• Pot washing sinks		Connections to food service equipment	
• Food Preparation Sinks		Single-level switching	
• Hand Sinks with adjacent trash bin		Fluorescent lighting	
• Work Tables		Illumination level: See Table 7600-16	
• Warming/Holding/Cabinets		Clock	
• Refrigeration - Reach-ins		Central sound system	
• Storage shelving			
• Mop washing sink		<u>Communications:</u>	
• Lockable chemical storage		N/A	
• Exhaust Hood Systems, including Fire Suppression			
• Combi oven		<u>Electronic Safety and Security:</u>	Div. 28
• Convection steamer		Life safety devices per code	
• Range, with oven, convection base			
• Ware Washing Machine with appropriate accessories (tables, booster heater, disposer, etc.)		<u>Miscellaneous:</u>	
		N/A	

NOTES:

1. Finishes/Features: Refer to Chapter 8 for specification references.

SERVING AREA

E-SD-3B



GOAL:

- To provide serving station for those seeking meals or snacks

PROGRAM ACTIVITIES:

- Serve food

SPATIAL RELATIONSHIPS:

- Within Student Dining Area/Multipurpose or Food Preparation Area
- Beginning of serving line should be near entry door of Students Dining Area/Multipurpose
- Adjacent and access to Student Dining Area/Multipurpose
- Open to Food Preparation Area

ENVIRONMENTAL CONSIDERATIONS:

- Uniform lighting
- Cleanable building services
- Electrical connections for food service equipment

CAPACITY:

- Students
- Staff
- Community

ANCILLARY SPACES:

- Student Dining Area/Multipurpose (E-SD-1)
- Kitchen (E-SD-3)

NOTES:

1. This is an example of a serving area. Food service equipment will vary from school to school; confirm requirements with District of Columbia Public Schools Food Service Department.
2. Loose furnishings and features shown represent one of many possible arrangements.

Educational Specifications for MacFarland Middle School

SERVING AREA

E-SD-3B

	Spec. Ref.#		Spec. Ref.#
<u>Finishes¹:</u>		<u>Features¹:</u>	
Flooring:		Fixed Equipment:	
Quarry tile	093000	Drop-In Individually Controlled Heated Electric Food Wells, Full Service Sneeze Guard with overshell may use existing milk box or a new airtight refrigerator for beverages. Size of equipment and number of are determined by space available. A Drop-In Self-Contained Refrigerated Cold Pan will also be included for side items. Counter and sneeze guards are lower than normal for better viewing and service to elementary students.	
Base:			
Quarry tile base	093000		
Ceiling:			
Cleanable, suspended, acoustical	095113		
Walls:			
Epoxy-painted concrete masonry units	042000 / 099123		
<u>Loose Furnishings:</u>		<u>HVAC:</u>	Div. 23
N/A		Supply/return air system Independent temperature control Kitchen canopy exhaust system Air conditioning	
<u>Miscellaneous:</u>		<u>Electrical:</u>	Div. 26
Cash registers at end of at point of service		Single-level switching Fluorescent lighting Illumination level: See Table 7600-16 Central sound system Duplex receptacles along permanent perimeter walls Electrical supply to support equipment specified Clock Circuits for portable generator TVSS protected quad receptacle adjacent to data and video ports	
<u>Fire Suppression:</u>	Div. 21		
Fire suppression system			
<u>Plumbing:</u>	Div. 22	<u>Communications:</u>	Div. 27
Connections to food service equipment Plumbing and gas connections Hand washing lavatory Floor drains		T1 1 voice port and phone T2 2 data ports at cash registers or per salad bar	
		<u>Electronic Safety and Security:</u>	Div. 28
		Life safety devices per code	

NOTES:

1. Finishes/Features: Refer to Chapter 8 for specification references.

DRY FOOD STORAGE

E-SD-3C

CAPACITY:
N/A

SIZE:
• Varies, see table

ANCILLARY SPACES:
• Warming Kitchen (E-SD-3)

GOAL:

- To provide an area for food storage

PROGRAM ACTIVITIES:

- Storage

SPATIAL RELATIONSHIPS:

- Near Supply Storage/Receiving
- Adjacent and access to
Food Preparation Area

ENVIRONMENTAL CONSIDERATIONS:

- Uniform lighting
- Cleanable building surfaces
- Adequate exhaust/ventilation

NOTES:

1. This is an example of a dry food storage area. Food service equipment will vary from school to school; confirm requirements with District of Columbia Public Schools Food Service Department.

Educational Specifications for MacFarland Middle School

DRY FOOD STORAGE

E-SD-3C

	Spec. Ref.#		Spec. Ref.#
<u>Finishes¹:</u>		<u>Features¹:</u>	
Flooring:		Fixed Equipment:	
Quarry tile	093000	F1 Rust-resistant 24" deep shelving and dunnage racks	114000
Base:		<u>Fire Suppression:</u>	Div. 21
Quarry tile base	093000	Fire suppression system	
Resilient base	096519	<u>Plumbing:</u>	
Ceiling:		N/A	
Cleanable, suspended, acoustical	095113	<u>HVAC:</u>	Div. 23
Walls:		Supply/return air system	
Epoxy-painted concrete masonry units	042000 / 099123	<u>Electrical:</u>	Div. 26
<u>Loose Furnishings:</u>		Duplex receptacles	
N/A		Single-level switching	
		Fluorescent lighting	
		Illumination level: See Table 7600-16	
		Fire alarm devices per code	
		<u>Communications:</u>	
		N/A	
		<u>Electronic Safety and Security:</u>	Div. 28
		Life safety devices per code	
		<u>Miscellaneous:</u>	
		N/A	

NOTES:

1. Finishes/Features: Refer to Chapter 8 for specification references.

FREEZER AND COOLER

E-SD-3D

SIZE:

- Varies, see table

ANCILLARY SPACES:

- Kitchen (E-SD-3)

GOAL:

- To provide space for manufactured freezer and refrigerator units to store food for short periods of time

PROGRAM ACTIVITIES:

- Storage
- Walk-in type

SPATIAL RELATIONSHIPS:

- Adjacent and access to Food Preparation Area
- Near the Supply Storage/Receiving

ENVIRONMENTAL CONSIDERATIONS:

- Uniform lighting
- Ventilation for refrigeration machinery equipment
- Cleanable building surfaces
- Floor to be flush with adjacent kitchen floor
- Electrical service for refrigeration equipment

Freezer/coolers need to be connected to the generator.

NOTES:

1. This is an example of a freezer and cooler. Food service equipment will vary from school to school; confirm requirements with District of Columbia Public Schools' Food Service Department. generally, deliveries occur once a week.

Educational Specifications for MacFarland Middle School

FREEZER AND COOLER E-SD-3D

<u>Finishes¹:</u>	<u>Spec. Ref.#</u>	<u>Features¹:</u>	<u>Spec. Ref.#</u>
Flooring: Poured Resin Floor		Fixed Equipment: F1 Rust resistant 24" deep shelving and dunnage racks	114000
Base: Manufactured insulated panel	114000	<u>Fire Suppression:</u> Fire suppression system	Div. 21
Ceiling: Manufactured insulated panel	114000	<u>Plumbing:</u> N/A	
Walls: Manufactured insulated panel	114000	<u>HVAC:</u> Div. 23 Exhaust air system for compressors	Div. 15
<u>Loose Furnishings:</u> N/A		<u>Electrical:</u> Div. 26 Electrical connections to freezer/cooler refrigeration equipment Single-level switching Incandescent lighting Illumination level: See Table 7600-16	
		<u>Communications:</u> N/A	
		<u>Electronic Safety and Security:</u> N/A	
		<u>Miscellaneous:</u> N/A	

NOTES:

1. Finishes/Features: Refer to Chapter 8 for specification references.

WARE WASHING

E-SD-3E

GOAL:

- To clean food service equipment

PROGRAM ACTIVITY:

- Space and equipment to scrape, wash, dry, and store food service equipment

SPATIAL RELATIONSHIPS:

- Pass-through into Student Dining Area/Multipurpose
- Adjacent and access to Food Preparation Area

ENVIRONMENTAL CONSIDERATIONS:

- Uniform lighting
- Proper ventilation of space to remove steam and condensation
- Cleanable building surfaces

CAPACITY:
N/A

SIZE:
• Varies, see table

ANCILLARY SPACES:
• Kitchen (E-SD-3)

NOTES:

1. This is an example of a ware washing area. Food service equipment will vary from school to school; confirm requirements with District of Columbia Public Schools' Food Service Department.

Educational Specifications for MacFarland Middle School

WARE WASHING E-SD-3E

<u>Finishes¹:</u>	<u>Spec. Ref.#</u>	<u>Features¹:</u>	<u>Spec. Ref.#</u>
Flooring:		Fixed Equipment:	
Quarry tile	093000	F1 Food service equipment	114000
Base:		<u>Fire Suppression:</u>	Div. 21
Quarry tile base	093000	Fire suppression system	
Resilient base	096519		
Ceiling:		<u>Plumbing:</u> Div. 22	
Cleanable, suspended, acoustical	095113	Lavatory	
Walls:		Connections to food service equipment	
Epoxy-painted concrete masonry units	042000 / 099123	Three compartment sink	
		Floor drain	
<u>Loose Furnishings:</u>		<u>HVAC:</u> Div. 23	
N/A		Supply/return air system	
		Independent temperature control	
		Exhaust hood system	
		<u>Electrical:</u> Div. 26	
		Duplex receptacles	
		Connections to food service equipment	
		Single-level switching	
		Fluorescent lighting	
		Illumination level: See Table 7600-16	
		Central sound system	
		<u>Communications:</u>	
		N/A	
		<u>Electronic Safety and Security:</u>	Div. 28
		Life safety devices per code	
		<u>Miscellaneous:</u>	
		N/A	

NOTES:

1. Finishes/Features: Refer to Chapter 8 for specification references.

Educational Specifications for MacFarland Middle School

PAPER PRODUCTS STORAGE

E-SD-3F

GOAL:

- To provide storage for paper products used in preparing and serving meals
- To provide storage for food program equipment (BIC, FFVP, and Early Childhood)

PROGRAM ACTIVITIES:

- Lockable space

SPATIAL RELATIONSHIPS:

- Adjacent and access to Food Preparation Area

ENVIRONMENTAL CONSIDERATIONS:

- Uniform lighting
- Adequate exhaust/ventilation
- Cleanable building surfaces

CAPACITY:

N/A

SIZE:

- Varies, see table

ANCILLARY SPACES:

- Kitchen (E-SD-3)

NOTES:

1. Loose furnishings and features shown represent one of many possible arrangements.

Educational Specifications for MacFarland Middle School

PAPER PRODUCTS STORAGE

	Spec. Ref.#		Spec. Ref.#
<u>Finishes¹:</u>		<u>Features¹:</u>	
Flooring:		Fixed Equipment:	
Resilient tile flooring	096519	F1 Rust-resistant shelving	114000
Base:		<u>Fire Suppression:</u>	Div. 21
Quarry tile base	093000	Fire suppression system	
Resilient base	096519		
Ceiling:		<u>Plumbing:</u>	
Cleanable, suspended, acoustical	095113	N/A	
Walls:		<u>HVAC:</u>	Div. 23
Epoxy-painted concrete masonry units	042000 / 099123	Exhaust air system	
		Supply/return air system	
<u>Loose Furnishings:</u>		Independent temperature control	
N/A			
		<u>Electrical:</u>	Div. 26
		Duplex receptacles	
		Single-level switching	
		Fluorescent lighting	
		Illumination level: See Table 7600-16	
		<u>Communications:</u>	
		N/A	
		<u>Electronic Safety and Security:</u>	
		N/A	
		<u>Miscellaneous:</u>	
		N/A	

NOTES:

1. Finishes/Features: Refer to Chapter 8 for specification references.

CLEANING STORAGE

E-SD-4

CAPACITY:

- Food service staff

SIZE:

- 50 SF

ANCILLARY SPACES:

- Kitchen (E-SD-3)

GOAL:

- To store chemicals used in cleaning and maintaining kitchen

PROGRAM ACTIVITIES:

- Storing chemicals and equipment

SPATIAL RELATIONSHIPS:

- Adjacent and access to Kitchen

ENVIRONMENTAL CONSIDERATIONS:

- Uniform lighting
- Cleanable building surfaces
- Sensors for spilled chemicals
- Adequate exhaust/ventilation

NOTES:

1. This is an example of a cleaning storage area. Food service equipment will vary from school to school; confirm requirements with District of Columbia Public Schools Food Service Department.
2. Loose furnishings and features shown represent one of many possible arrangements.

LOCKERS

E-SD-5

GOAL:

- To provide space for the food service staff to store their personal belongings and to change their clothing

PROGRAM ACTIVITIES:

- Space for the storage of towels, aprons, etc.
- Space to allow food staff personnel to take breaks

SPATIAL RELATIONSHIPS:

- Adjacent and access to Kitchen
- Adjacent and access to Toilet

ENVIRONMENTAL CONSIDERATIONS:

- Uniform lighting
- Environmental sound control:
Wall minimum: STC 40
Ceiling minimum: CAC 35

CAPACITY:

- Food service personnel

SIZE:

- 75 SF

ANCILLARY SPACES:

- Kitchen (E-SD-3)
- Toilet (E-SD-6)

NOTES:

1. Loose furnishings and features shown represent one of many possible arrangements.

Educational Specifications for MacFarland Middle School

LOCKERS E-SD- 5

<u>Finishes¹:</u>	<u>Spec. Ref.#</u>	<u>Features¹:</u>	<u>Spec. Ref.#</u>
Flooring:		Fixed Equipment:	
Resilient tile flooring	096519	F1 Lockers	105113
		12" wide x 12" deep x 72" high	
Base:		F2 Tack board (4 LF)	101100
Quarry tile base	093000		
Resilient base	096519		
Ceiling:		<u>Fire Suppression:</u>	Div. 21
Suspended, acoustical	095113	Fire suppression system	
Walls:		<u>Plumbing:</u>	
Painted concrete masonry units		N/A	
	042000 / 099123		
<u>Loose Furnishings:</u>		<u>HVAC:</u> Div. 23	
L1 Chairs		Exhaust air system	
L2 30" x 60" table		Supplemental heat as required	
Wastebasket			
		<u>Electrical:</u> Div. 26	
		Duplex receptacles	
		Single-level switching	
		Fluorescent lighting	
		Illumination level: See Table 7600-16	
		Clock	
		Central sound system	
		<u>Communications:</u>	
		N/A	
		<u>Electronic Safety and Security:</u>	Div. 28
		Life safety devices per code	
		<u>Miscellaneous:</u>	
		N/A	

NOTES:

1. Finishes/Features: Refer to Chapter 8 for specification references.

TOILET

E-SD-6

CAPACITY:

- Food service personnel

SIZE:

- 50 SF

ANCILLARY SPACES:

- Lockers (E-SD-5)

PROGRAM ACTIVITIES:

- Personal and health needs for food service staff
- Changing clothing

SPATIAL RELATIONSHIPS:

- Adjacent and access to lockers
- Near Kitchen

ENVIRONMENTAL CONSIDERATIONS:

- Uniform lighting
- Environmental sound control:
 - Wall minimum: STC 40
 - Ceiling minimum: CAC 35
- Moisture- and stain-resistant finishes
- Adequate exhaust/ventilation

NOTES:

2. Loose furnishings and features shown represent one of many possible arrangements.

Educational Specifications for MacFarland Middle School

TOILET E-SD-6

<u>Finishes¹:</u>	<u>Spec. Ref.#</u>	<u>Features¹:</u>	<u>Spec. Ref.#</u>
Flooring:		<u>Fixed Equipment:</u>	
Ceramic tile	093000	F1 Towel dispenser	102800
		F2 24" x 60" mirror	102800
Base:		F3 Toilet tissue holder	102800
Quarry tile base	093000	F4 36" and 42" grab bars	102800
Resilient base	096519	F5 Soap dispenser	102800
		F6 Sanitary dispenser	102800
Ceiling:		F7 Sanitary disposal (with cover)	102800
Suspended, acoustical	095113	F8 Coat hook	102800
Walls:		<u>Fire Suppression:</u>	Div. 21
Painted concrete masonry units		Fire suppression system	
042000 / 099123			
<u>Loose Furnishings:</u>		<u>Plumbing:</u> Div. 22	
N/A		Wall-mounted water closet	
		Wall-mounted lavatory	
		Plumbing connections	
		Floor drain	
		<u>HVAC:</u> Div. 23	
		Exhaust air system	
		Supplemental heat as required	
		<u>Electrical:</u> Div. 26	
		Duplex receptacles	
		Single-level switching	
		Fluorescent lighting	
		Illumination level: See Table 7600-16	
		Central sound system	
		<u>Communications:</u>	
		N/A	
		<u>Electronic Safety and Security:</u>	Div. 28
		Life safety devices per code	
		<u>Miscellaneous:</u>	
		N/A	

NOTES:

1. Finishes/Features: Refer to Chapter 8 for specification references.

FOOD SERVICE OFFICE

E-SD-7

CAPACITY:

- Food service manager
- Food service staff

SIZE:

- 100 SF

ANCILLARY SPACES:

- Kitchen (E-SD-3)

GOAL:

- To provide an area to keep records and conduct business

PROGRAM ACTIVITIES:

- Scheduling
- Staff evaluations/discipline/meetings

SPATIAL RELATIONSHIPS:

- Adjacent and access to kitchen

ENVIRONMENTAL CONSIDERATIONS:

- Uniform lighting
- Environmental sound control:
 - Wall minimum: STC 40
 - Ceiling minimum: CAC 35
- Electrical outlets for equipment
- View of the kitchen

NOTES:

1. Loose furnishings and features shown represent one of many possible arrangements.

Educational Specifications for MacFarland Middle School

FOOD SERVICE OFFICE E-SD-7

<u>Finishes¹:</u>	<u>Spec. Ref.#</u>	<u>Features¹:</u>	<u>Spec. Ref.#</u>
Flooring:		Fixed Equipment:	
Resilient tile flooring	096519	F1 Tack board (4 LF)	101100
Base:		Fire Suppression:	Div. 21
Quarry tile base	093000	Fire suppression system	
Resilient base	096519	Plumbing:	
Ceiling:		N/A	
Suspended, acoustical	095113	HVAC: Div. 23	
Walls:		Supply/return air system	
Painted concrete masonry units	042000 / 099123	Independent temperature control	
<u>Loose Furnishings:</u>		Electrical: Div. 26	
L1 Desk		Duplex receptacles	
L2 Four-drawer file cabinet		TVSS protected quad receptacle adjacent to data and video port	
L3 Computer workstation		Single-level switching	
L4 Ergonomic task chair		Fluorescent lighting	
L5 Adjustable height bookshelves (12 LF)		Illumination level: See Table 7600-16	
L6 Printer table		Clock	
Wastebasket		Central sound system	
		Communications: Div. 27	
		T1 Voice port and phone	
		T2 Data port near workstation	
		T3 Data port for printer	
		Electronic Safety and Security: Div. 28	
		Life safety devices per code	
		Miscellaneous:	
		M1 Computer	
		M2 Printer	
		Bulletin board	

NOTES:

1. Finishes/Features: Refer to Chapter 8 for specification references.

Educational Specifications for MacFarland Middle School

TEACHING KITCHEN

SIZE:

- 800-900 SF

ANCILLARY SPACES:

- Cafeteria

SPATIAL RELATIONSHIPS:

- Accessible to students and staff
- Consider garage door or movable wall to the cafeteria

GOALS:

- Flexible space and layout

PROGRAM ACTIVITIES:

- Large and small group instruction
- Hands-on activities
- Team teaching

Loose Furnishings:

- 4 6-person tables
- 24 chairs
- Fire blanket/First Aide Kit
- Adjustable height stool for teacher

Fixed Equipment:

- Marker board (16 LF)/
- Tack board (8-16 LF)
- Casework for dining equipment (dishes, table cloths, etc.)

Kitchen Equipment:

- Range, 30" w, front controls, timer, visual light door, self-cleaning oven with exhaust hood
- 2 - Double bowl stainless steel kitchen sinks with goose neck, swivel kitchen faucet and garbage disposal (HW/CW)
- Refrigerator/freezer, 24 cu. ft.
- Microwave-1,200 watt, residential, under cabinet mount
- Full sized convection oven
- Ice maker, large capacity
- Dishwasher

Classroom Technology:

- Interactive white board or ceiling mounted overhead projected (to be determined at the time of installation);

- Projection screen, as needed

Single point 'face plate' to include:

- Voice, data, VGA, audio enhancement, and HDMI
- Wireless

Features:

Demonstration Area

- Provide movable demonstration island with counter top, 9'L x 30"D x 34"H, double outlets on each end of the demonstration table and slant mirror.
- Provide tall storage cabinet/pantry unit, lockable with adjustable shelves, 84"H X 36"W X 30"D.

Kitchen

- Provide plastic laminate counter surface for kitchen work surfaces.
- Above counter cabinets: double doors, lockable with adjustable shelves.
- Base cabinets: 24"D x 34"H storage cabinets for work space/food preparation, and storage of various pieces of equipment, baking, cookware, etc. One bank of cabinets shall have all drawers of various depths, with one locking drawer. The remaining cabinets shall have adjustable shelves, with one bank of lockable doors.
- Soap dispenser
- Towel dispenser

Plumbing

2 sinks

Eye Wash station

Educational Specifications for MacFarland Middle School

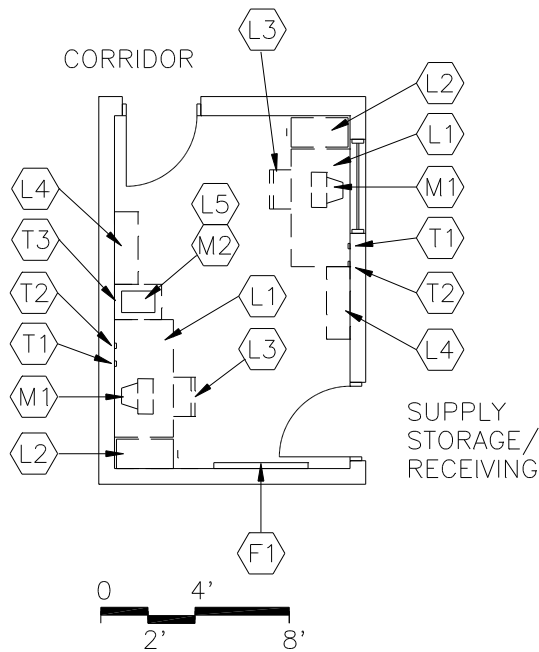
Maintenance & Custodial Space Requirements

Spaces	Suggested			Comments
	Qty.	S.F.		
Receiving and storage	1	450	450	
Facilities Manager	1	80	80	
Custodial Office	1	140	140	
Toilet/Showers/Lockers	2	125	250	
Total			920	

DRAFT

CUSTODIAL OFFICE

M-EC-3



GOAL:

- To provide an area for the maintenance manager, staff, and building engineer to provide supervision of the physical plan

PROGRAM ACTIVITIES:

- Conferences with staff and other visitors
- Telephone calls
- Paperwork

SPATIAL RELATIONSHIPS:

- Adjacent and access to Supply Storage/Receiving
- Access to corridor

ENVIRONMENTAL CONSIDERATIONS:

- Uniform lighting
- Electrical outlets for equipment
- Visual control of supply storage/receiving

CAPACITY:

- Maintenance and custodial staff

SIZE:

- 150 SF

ANCILLARY SPACES:

- Supply Storage/Receiving (M-EC-2)

NOTES:

1. Loose furnishings and features shown represent one of many possible arrangements.

Educational Specifications for MacFarland Middle School

**CUSTODIAL OFFICE
M-EC-3**

	<u>Spec. Ref.#</u>		<u>Spec. Ref.#</u>
<u>Finishes¹:</u>		<u>Features¹:</u>	
Flooring:		Fixed Equipment:	
Resilient tile flooring	096519	F1 Tack board (4 LF)	101100
Base:		<u>Fire Suppression:</u>	Div. 21
Resilient base	096519	Fire suppression system	
Ceiling:		<u>Plumbing:</u>	
Suspended, acoustical	095113	N/A	
Walls:		<u>HVAC:</u>	Div. 23
Painted concrete masonry units	042000 / 099123	Supply/return air system	
<u>Loose Furnishings:</u>		Independent temperature control	
L1 desk		<u>Electrical:</u>	Div. 26
L2 four-drawer file cabinet		Duplex receptacles	
L3 2 ergonomic task chairs		TVSS protected quad receptacle adjacent to data port	
L4 Adjustable height bookshelves (12 LF)		Single-level switching	
L5 Printer table		Fluorescent lighting	
		16500	16500
		Clock	
		Central sound system	
		<u>Communications:</u>	Div. 27
		T1 2 data ports	
		T2 2 voice ports and phones	
		T3 Data port for printer	
		<u>Electronic Safety and Security:</u>	Div. 28
		Life safety devices per code	
		<u>Miscellaneous:</u>	
		M1 2 computers	
		M2 Printer	

NOTES:

Finishes/Features: Refer to Chapter 8 for specification references.