



An Exelon Company

# Your electric bill - Jan 2017

for the period **December 20, 2016 to January 19, 2017**



## Energy for a Changing World.



### DC GOVT HA

**Account number: 5501 5840 774**
**Your service address:** 201 N ST SW  
WASHINGTON DC 20024

**Bill Issue date:** Jan 24, 2017

### Summary of your charges

Balance from your last bill	\$2,359.99
Your payment(s) - thank you	\$907.54-
<b>Balance forward as of Jan 24, 2017</b>	<b>\$1,452.45</b>
New electric distribution charges - Pepco	\$891.97
New WGL Energy Svcs supply charges	\$743.60
<b>Total amount due by Feb 14, 2017</b>	<b>\$3,088.02</b>

After Feb 14, 2017, a Late Payment Charge of \$41.86 will be added, increasing the amount due to \$3,129.88.

A past due amount of \$1,452.45 remained on your account at the time your bill was prepared. If payment has been made, please disregard this notice. For bill payment options, visit [www.pepco.com](http://www.pepco.com).

Visit [pepco.com/dctariffs](http://pepco.com/dctariffs) and click "DC Terms and Conditions" for information on how payments are applied to balances from Pepco and any competitive supplier.

Your smart electric meter is read wirelessly. Visit My Account at [pepco.com](http://pepco.com) to view your daily and hourly energy usage.

If you are moving or discontinuing service, please contact Pepco at least three days in advance.

### How to contact us

Customer Service (Mon-Fri, 7am - 8 pm)	<b>202-833-7500</b>
Hearing Impaired (TTY)	<b>202-872-2369</b>
¿Problemas con la factura?	<b>202-872-4641</b>
Electric emergencies & outages (24 hours)	<b>1-877-737-2662</b>
Visit <a href="http://pepco.com">pepco.com</a> for service, billing and correspondence information.	

Pepco is regulated by - DC Public Service Commission, [dcpsc.org](http://dcpsc.org)  
1325 G St NW, Suite 800, Washington DC 20005, 202-626-5100

Consumer Advocate - Office of People's Counsel, [opc-dc.gov](http://opc-dc.gov)  
1133 Fifteenth St NW, Washington DC 20005, 202-727-3071

Information regarding rate schedules and how to verify the accuracy of your bill will be mailed upon request.

Follow us on Twitter at [twitter.com/PepcoConnect](https://twitter.com/PepcoConnect). Like us on Facebook at [facebook.com/PepcoConnect](https://facebook.com/PepcoConnect).

S0001 87-0000383-0000001 of 0000004-C09-DV-4020-00187

DCG

Please tear on the dotted line below. Invoice Number: 200370482073 Page 1 of 4

**Return this coupon with your payment**  
made payable to Pepco

Account number	<b>5501 5840 774</b>
Total amount due by Feb 14, 2017	<b>\$3,088.02</b>
Total amount due after Feb 14, 2017	<b>\$3,129.88</b>

8000187

4020

 9200-100187-1  
9VX00187

**Amount  
Paid:**

 \$      

DC GOVT HA  
ENERGY MGMT DIV BMA DAS  
441 4TH ST NW # 7N43  
WASHINGTON DC 20001-2714



PO BOX 13608  
PHILADELPHIA PA 19101



700001550158407740000000001452450000001635570000003088020016

DC GOVT HA  
Account number: 5501 5840 774

Your electric bill for the period  
December 20, 2016 to January 19, 2017

## Details of your Electric Charges

Non-Residential-GT - service number 0550 1584 0774 7001 8279 44  
Electricity you used this period

Meter Number Energy Type	Current Reading	Previous Reading	Difference	Multiplier	Total Use
KZD341182329 Use (kWh)	Jan 19 006528 (actual)	Dec 20 006385 (actual)	143	80	11440
On-Peak Use (kWh)	001846 (actual)	001816 (actual)	30	80	2400
Int-Peak Use (kWh)	001665 (actual)	001634 (actual)	31	80	2480
Off-Peak Use (kWh)	003016 (actual)	002934 (actual)	82	80	6560
On-Peak Demand (kW)	0.320 (actual)			80	25.60
Int-Peak Demand (kW)	0.330 (actual)			80	26.40
Off-Peak Demand (kW)	0.290 (actual)			80	23.20

### Electric Distribution Summary - Pepco

Balance from your last bill	\$1,569.59
Payment Dec 28	\$709.94-
Total Payments	\$709.94-
Electric Charges (Non-Residential-GT)	\$891.97
New electric charges	\$891.97
Total amount due by Feb 14, 2017	\$1,751.62

Total use-kWh 11440

Your next meter reading is scheduled for February 17, 2017

**Delivery Charges:** These charges reflect the cost of bringing electricity to you.  
Current charges for 31 days, **winter rates in effect.**

Type of charge	How we calculate this charge	Amount(\$)
Distribution Services:		
Customer Charge		379.03
Energy Charge	11440 kWh X \$0.0119200 per kWh	136.36
Maximum Demand	26.40 kW X \$9.2500000 per kW	244.20

Page 2 of 4

### ☐ Check here to enroll in the Direct Debit plan

Sign and date here \_\_\_\_\_

By signing here, you authorize Pepco to electronically deduct the amount of your monthly bill from your checking account each month. The check you send with this signed authorization will be used to set up Direct Debit. You understand that we will notify you each month of the date and amount of the debit, which will be on or after the due date stated on your monthly bill. You understand that to withdraw this authorization you must call Pepco. You understand that Pepco does not charge for this service, but that your bank may have charges for this service.

### Customer Service Centers

Washington DC		Maryland
701 Ninth St NW	(Mon - Fri) 8:30am - 5:15pm	201 West Gude Dr, Rockville (Mon - Fri) 10:00am - 2:00pm
2300 Martin Luther King Jr Ave SE	(Mon - Fri) 9:00am - 5:00pm	8300 Old Marlboro Pk, Forestville (Mon, Wed, Fri) 10:00am - 2:00pm

Any inquiry or complaint about this bill should be made prior to the due date, in order to avoid late charges.

Electronic Check Conversion - When you provide a check as payment, you authorize us either to use information from your check to make a one-time electronic fund transfer from your account or to process the payment as a check transaction.

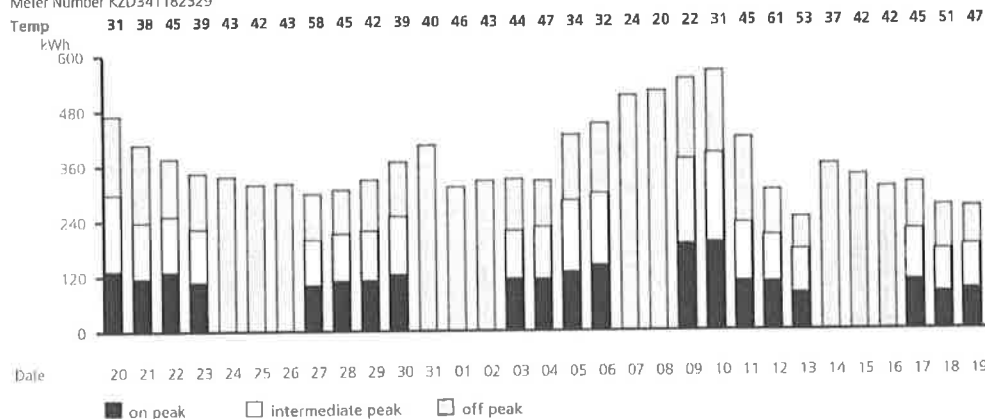


### Energy Usage History

	Jan 16	Feb 16	Mar 16	Apr 16	May 16	Jun 16	Jul 16	Aug 16	Sep 16	Oct 16	Nov 16	Dec 16	Jan 17
Temp	42°	35°	50°	54°	60°	73°	79°	83°	79°	66°	56°	44°	41°
Days	34	28	29	33	29	32	30	29	34	29	28	32	31
kWh	9440	16240	14240	7440	5920	6560	8160	10560	8560	3920	3040	9120	11440
On Pk kWh	2080	3520	3600	1920	1920	1920	2480	3200	2480	1280	960	2240	2400
Int Pk kWh	2240	3600	3440	1840	1920	1600	2240	2640	2320	1200	880	2080	2480
Off Pk kWh	5120	9120	7200	3680	2000	3120	3440	4720	3760	1440	1200	4800	6560
kW Max	45.60	40.00	44.80	38.40	44.80	28.00	25.60	28.80	24.00	21.60	28.00	28.80	26.40
kW On Pk	30.40	39.20	44.80	32.00	44.80	28.00	25.60	28.80	23.20	21.60	28.00	28.80	25.60

Your daily electricity use for this bill period. Visit My Account at [pepco.com](http://pepco.com) to see your hourly electricity use.

Meter Number KZD341182329



### WGL Energy Svcs electric supply charges

Service number 0550 1584 0774 7001 8279 44

Your electricity is supplied by WGL Energy Services. If you have any questions about your electric supply charges, call WGL Energy Services at 1-888-236-9437.

Billing period: Dec 20, 2016 to Jan 19, 2017 (31 days)

Type of service: Non-Residential-GT

Usage 11440.0 kwh at 0.065 per kwh (12/20/2016)

\$743.60  
Amount(\$)  
743.60

### WGL Energy Svcs electric charges

Email [EMP@wglenergy.com](mailto:EMP@wglenergy.com) to access your free Energy Management Platform account

### WGL Energy Svcs Electric Supply Summary

Balance from your last bill	\$790.40
Payment Dec 28	\$197.60-
<b>Total Payments</b>	<b>\$197.60-</b>
Total Current Charges	\$743.60
<b>New WGL Energy Svcs electric supply charges</b>	<b>\$743.60</b>
<b>Total amount due by Feb 14, 2017</b>	<b>\$1,336.40</b>



An Exelon Company

# Your electric bill - Jan 2017

for the period **December 20, 2016 to January 19, 2017**



Energy for a Changing World



## DC GOVT HA

**Account number: 5502 0001 883**

**Your service address:** 201 N ST SW  
WASHINGTON DC 20024

**Bill Issue date:** Jan 24, 2017

## Summary of your charges

Balance from your last bill	\$3,864.49
Your payment(s) - thank you	\$1,828.31
Balance forward as of Jan 24, 2017	\$2,036.18
New electric distribution charges - Pepco	\$1,091.54
New WGL Energy Svcs supply charges	\$1,029.60
<b>Total amount due by Feb 14, 2017</b>	<b>\$4,157.32</b>

After Feb 14, 2017, a Late Payment Charge of \$56.90 will be added, increasing the amount due to \$4,214.22.

A past due amount of \$2,036.18 remained on your account at the time your bill was prepared. If payment has been made, please disregard this notice. For bill payment options, visit [www.pepco.com](http://www.pepco.com).

Visit [pepco.com/dctariffs](http://pepco.com/dctariffs) and click "DC Terms and Conditions" for information on how payments are applied to balances from Pepco and any competitive supplier.

Your smart electric meter is read wirelessly. Visit My Account at [pepco.com](http://pepco.com) to view your daily and hourly energy usage.

If you are moving or discontinuing service, please contact Pepco at least three days in advance.

## How to contact us

Customer Service (Mon-Fri, 7am - 8 pm)	202-833-7500
Hearing Impaired (TTY)	202-872-2369
¿Problemas con la factura?	202-872-4641
Electric emergencies & outages (24 hours)	1-877-737-2662
Visit <a href="http://pepco.com">pepco.com</a> for service, billing and correspondence information.	

Pepco is regulated by - DC Public Service Commission, [dcpsc.org](http://dcpsc.org)  
1325 G St NW, Suite 800, Washington DC 20005, 202-626-5100

Consumer Advocate - Office of People's Counsel, [opc-dc.gov](http://opc-dc.gov)  
1133 Fifteenth St NW, Washington DC 20005, 202-727-3071

Information regarding rate schedules and how to verify the accuracy of your bill will be mailed upon request.

Follow us on Twitter at [twitter.com/PepcoConnect](https://twitter.com/PepcoConnect). Like us on Facebook at [facebook.com/PepcoConnect](https://facebook.com/PepcoConnect).

800022-0000053-0000001 of 0000004-C08-DV-4020-00022

DCG

Please tear on the dotted line below. Invoice Number: 200890428052 Page 1 of 4

**Return this coupon with your payment**  
made payable to Pepco

Account number	5502 0001 883
Total amount due by Feb 14, 2017	\$4,157.32
Total amount due after Feb 14, 2017	\$4,214.22

8000022 NX

4029

C08 P00022 I

9VX00022

Amount  
Paid:

\$

DC GOVT HA  
ENERGY MGMT DIV  
441 4TH ST NW # 1100S  
WASHINGTON DC 20001-2714



PO BOX 13608  
PHILADELPHIA PA 19101



700001550200018830000000002036180000002121140000004157320015

DC GOVT HA  
Account number: 5502 0001 883

Your electric bill for the period  
December 20, 2016 to January 19, 2017

## Details of your Electric Charges

Non-Residential-GT - service number 0550 2000 1883 7001 9204 30  
Electricity you used this period

Meter Number Energy Type	Current Reading	Previous Reading	Difference	Multiplier	Total Use
KZD350747036 Use (kWh)	Jan 19 008085 (actual)	Dec 20 007988 (actual)	97	160	15520
On-Peak Use (kWh)	002468 (actual)	002440 (actual)	28	160	4480
Int-Peak Use (kWh)	001992 (actual)	001970 (actual)	22	160	3520
Off-Peak Use (kWh)	003625 (actual)	003576 (actual)	49	160	7840
On-Peak Demand (kW)	0.230 (actual)			160	36.80
Int-Peak Demand (kW)	0.220 (actual)			160	35.20
Off-Peak Demand (kW)	0.220 (actual)			160	35.20

Total use-kWh 15840

Your next meter reading is scheduled for February 17, 2017

**Delivery Charges:** These charges reflect the cost of bringing electricity to you.  
Current charges for 31 days, **winter rates in effect.**

Type of charge	How we calculate this charge	Amount(\$)
Distribution Services:		
Customer Charge		379.03
Energy Charge	15840 kWh X \$0.0119200 per kWh	188.82
Maximum Demand	36.80 kW X \$9.2500000 per kW	340.40

Page 2 of 4

### ☐ Check here to enroll in the Direct Debit plan

Sign and date here \_\_\_\_\_

By signing here, you authorize Pepco to electronically deduct the amount of your monthly bill from your checking account each month. The check you send with this signed authorization will be used to set up Direct Debit. You understand that we will notify you each month of the date and amount of the debit, which will be on or after the due date stated on your monthly bill. You understand that to withdraw this authorization you must call Pepco. You understand that Pepco does not charge for this service, but that your bank may have charges for this service.

### Customer Service Centers

Washington DC  
701 Ninth St NW (Mon - Fri) 8:30am - 5:15pm  
2300 Martin Luther King Jr Ave SE (Mon - Fri) 9:00am - 5:00pm

Maryland  
201 West Gude Dr, Rockville (Mon - Fri) 10:00am - 2:00pm  
8300 Old Marlboro Pk, Forestville (Mon, Wed, Fri) 10:00am - 2:00pm

Any inquiry or complaint about this bill should be made prior to the due date, in order to avoid late charges.

Electronic Check Conversion - When you provide a check as payment, you authorize us either to use information from your check to make a one-time electronic fund transfer from your account or to process the payment as a check transaction.

**DC GOVT HA**

**Account number: 5502 0001 883**

Your electric bill for the period  
**December 20, 2016 to January 19, 2017**



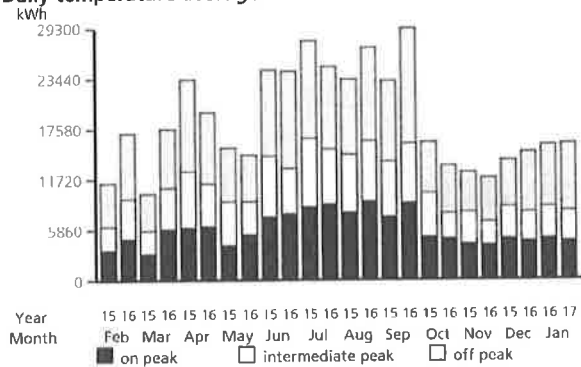
Residential Aid Discount		
Surcharge	15840 kWh X \$0.0001590 per kWh	2.52
Administrative Credit	15840 kWh X \$0.0000000 per kWh	0.00
<b>Subtotal (Set by DC PSC)</b>		<b>910.77</b>
Energy Assistance Trust		
Fund	15840 kWh X \$0.0000607 per kWh	0.96
Sustain Energy Trust Fund	15840 kWh X \$0.0016120 per kWh	25.53
Public Space Occupancy		
Surcharge	15840 kWh X \$0.0020400 per kWh	32.31
Delivery Tax	15840 kWh X \$0.0077000 per kWh	121.97
<b>Subtotal (Not set by DC PSC)</b>		<b>180.77</b>
<b>Total Electric Delivery Charges</b>		<b>1,091.54</b>

**Supply Charges:** These charges reflect the cost of producing electricity for you.

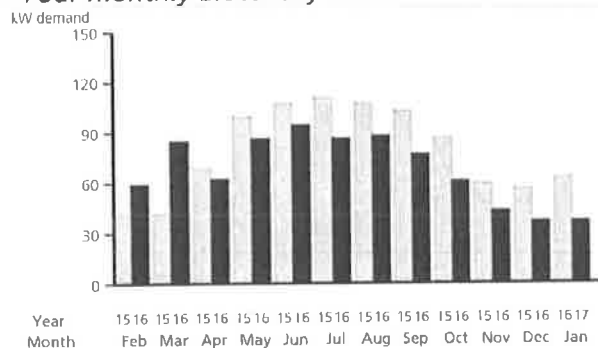
<b>Total Electric Charges - Non-Residential-GT</b>	<b>1,091.54</b>
--	-----------------

*Your monthly Electricity use in kWh*

**Daily temperature averages:** Jan 2016: 42° F Jan 2017: 41° F



*Your monthly Electricity use in kW demand*

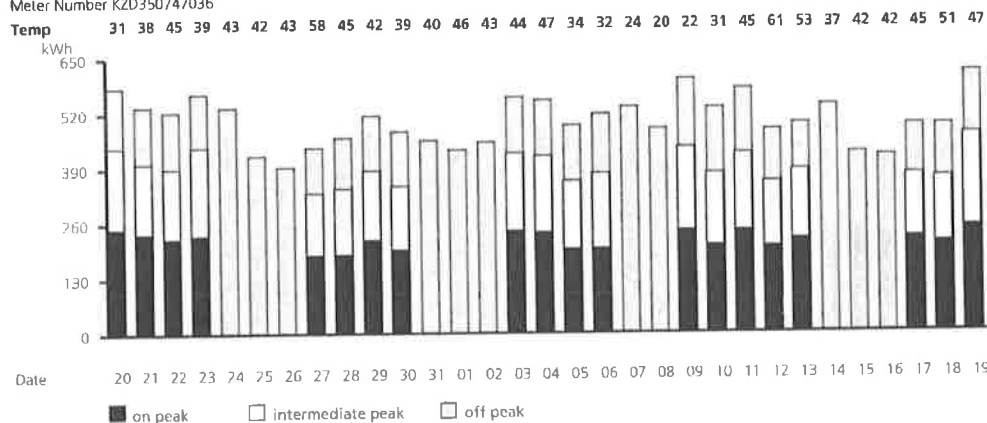


### Energy Usage History

	Jan 16	Feb 16	Mar 16	Apr 16	May 16	Jun 16	Jul 16	Aug 16	Sep 16	Oct 16	Nov 16	Dec 16	Jan 17
Temp	42°	35°	50°	54°	60°	73°	79°	83°	79°	66°	56°	44°	41°
Days	34	28	29	33	29	32	30	29	34	29	28	32	31
kWh	15680	17120	17600	19360	14720	24320	24800	27040	29280	13440	11680	15040	15520
On Pk kWh	4800	4800	5920	6240	5280	7680	8800	9120	8960	4800	4000	4480	4480
Int Pk kWh	3680	4640	4800	4960	3840	5280	6400	7040	6880	2880	2720	3360	3520
Off Pk kWh	7200	7680	6880	8320	5440	11360	9600	10880	13440	5600	5120	7040	7840
kW Max	62.40	59.20	84.80	62.40	86.40	94.40	86.40	88.00	76.80	60.80	43.20	36.80	36.80
kW On Pk	62.40	59.20	84.80	62.40	86.40	94.40	86.40	88.00	76.80	60.80	43.20	35.20	36.80

Your daily electricity use for this bill period. Visit My Account at [pepco.com](http://pepco.com) to see your hourly electricity use.

Meter Number KZD350747036



### WGL Energy Svcs electric supply charges

**Service number 0550 2000 1883 7001 9204 30**

Your electricity is supplied by WGL Energy Services. If you have any questions about your electric supply charges, call WGL Energy Services at 1-888-236-9437.

Billing period: Dec 20, 2016 to Jan 19, 2017 (31 days)

Type of service: Non-Residential-GT

Usage 15840.0 kwh at 0.065 per kwh (12/20/2016)

\$1,029.60

Amount(\$)

1,029.60

### WGL Energy Svcs electric charges

Email [EMP@wglenergy.com](mailto:EMP@wglenergy.com) to access your free Energy Management Platform account

### WGL Energy Svcs Electric Supply Summary

Balance from your last bill	<b>\$1,736.80</b>
Payment Dec 28	\$769.60-
<b>Total Payments</b>	<b>\$769.60-</b>
Total Current Charges	\$1,029.60
<b>New WGL Energy Svcs electric supply charges</b>	<b>\$1,029.60</b>
<b>Total amount due by Feb 14, 2017</b>	<b>\$1,996.80</b>