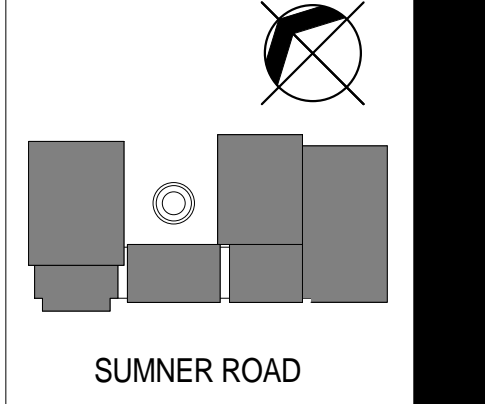


BARRY FARM RECREATION CENTER

1230 Sumner Road, SE
Washington, DC 20020
Architect:
Torti Gallas Urban, Inc.
1316 9th Street, NW
Washington, DC 20001
www.tortigallas.com
Developer:
Department of General Services
RFK Stadium, Lot 4, Gate F
Washington DC 20003
202.698.7700
Department of Park and Recreation
3149 16th Street, NW
Washington, DC 20010
202.673.7647
Structural Engineer:
SK&A Structural Engineers,
1155 Connecticut Avenue
Suite 800
Washington DC 20036
202.659.2520
MEP Engineer:
Bhargava International, Inc.
7325 Georgia Avenue NW
Washington DC 20012
202.366.6109
Civil Engineer:
Wiles Mensch Corporation
1424 K Street, Suite 302
Washington, DC 20005
202.638.4040
Landscape Architect:
Wiles Mensch Corporation
1424 K Street, Suite 302
Washington, DC 20005
202.638.4040
Pool Design:
SEI Architects
1355 Piccard Dr, Suite 200
Rockville, MD 20850
301.770.0177
Interior Design:
TGU

Key Plan



Issue

No.	Date
SD SET	3.16.12
DD SET	5.04.12
PERMIT REVIEW SET	7.30.12
FTG REVIEW SET	3.19.13
PERMIT REVIEW RESUB	3.29.13
CMR SUBMISSION	4.15.13
FTG SUBMISSION	5.24.13
FOUND COORD PKG	6.21.13
ISSUED FOR CONST	7.12.13

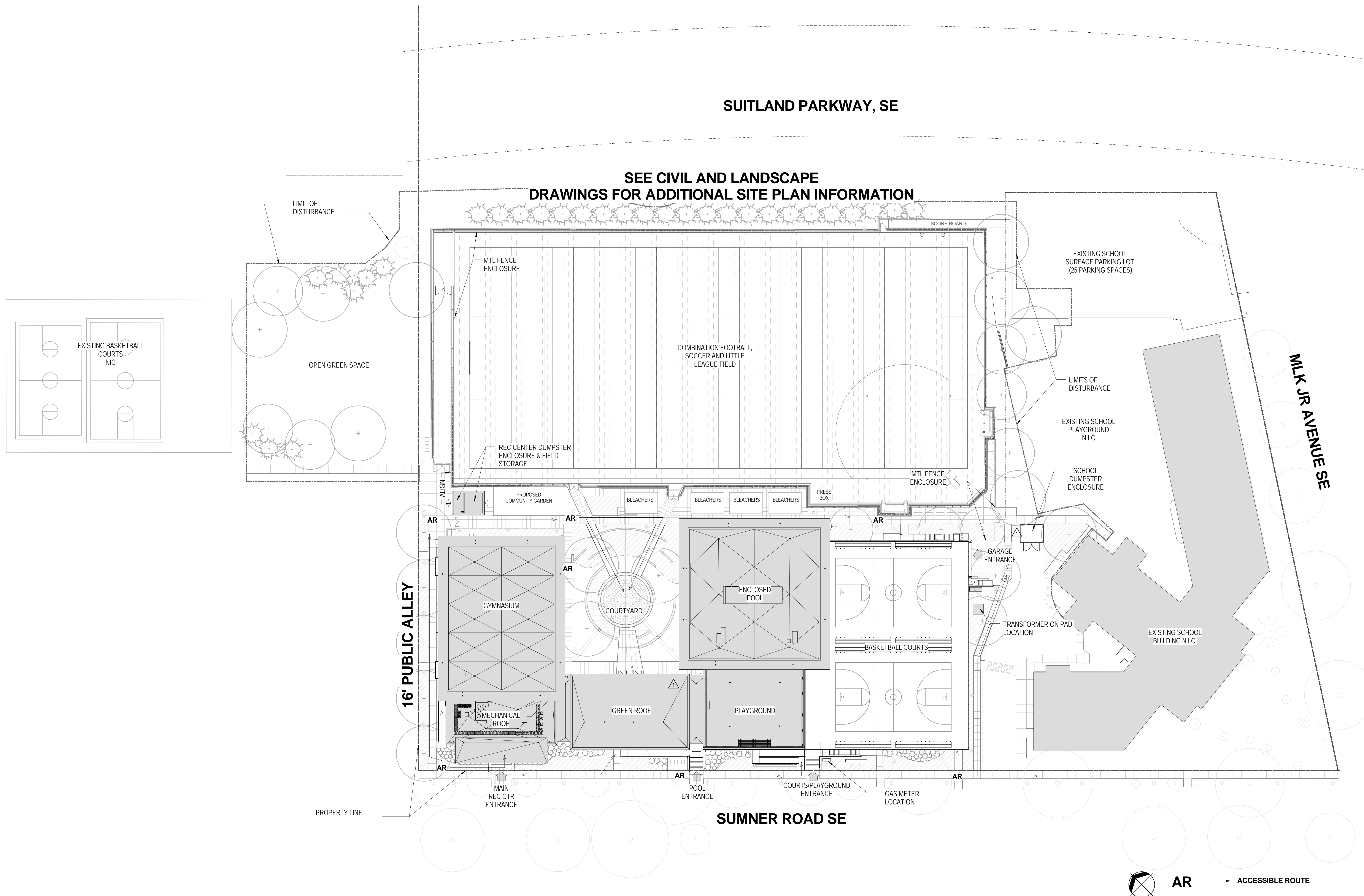
Revisions

No.	Date
1	PERMIT REVISIONS 03.29.2013

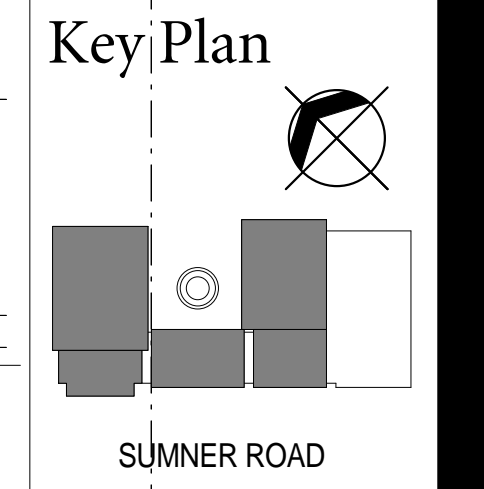
Site Plan

Date
APRIL 15, 2013
Principal In Charge
S.E.
Design Architect
S.A.
Project Architect
M.V., L.D., F.D.
Approved
R.W.
Drawn
K.T., S.F., D.R., A.C.
Job No.
09224.01
Scale
1" = 30'-0"
Drawing No.
A001

Issued for Construction Submission *7.12.13



1230 Summer Road, SE
Washington, DC 20020
Architect:
Torti Gallas Urban, Inc.
1316 9th Street, NW
Washington, DC 20001
202.232.3132
www.tortigallas.com
Developer:
Department of General Services
RFK Stadium, Lot 4, Gate F
Washington DC 20003
202.698.7700
Department of Park and Recreation
3149 16th Street, NW
Washington, DC 20010
202.673.7647
Structural Engineer:
SK&A Structural Engineers,
1155 Connecticut Avenue
Suite 800
Washington DC 20036
202.659.2520
MEP Engineer:
Bhargava International, Inc.
7325 Georgia Avenue NW
Washington DC 20012
202.366.6109
Civil Engineer:
Wiles Mensch Corporation
1424 K Street, Suite 302
Washington, DC 20005
202.638.4040
Landscape Architect:
Wiles Mensch Corporation
1424 K Street, Suite 302
Washington, DC 20005
202.638.4040
Pool Design:
SEI Architects
1355 Piccard Dr, Suite 200
Rockville, MD 20850
1.770.0177
Interior Design:
TGU



Issue

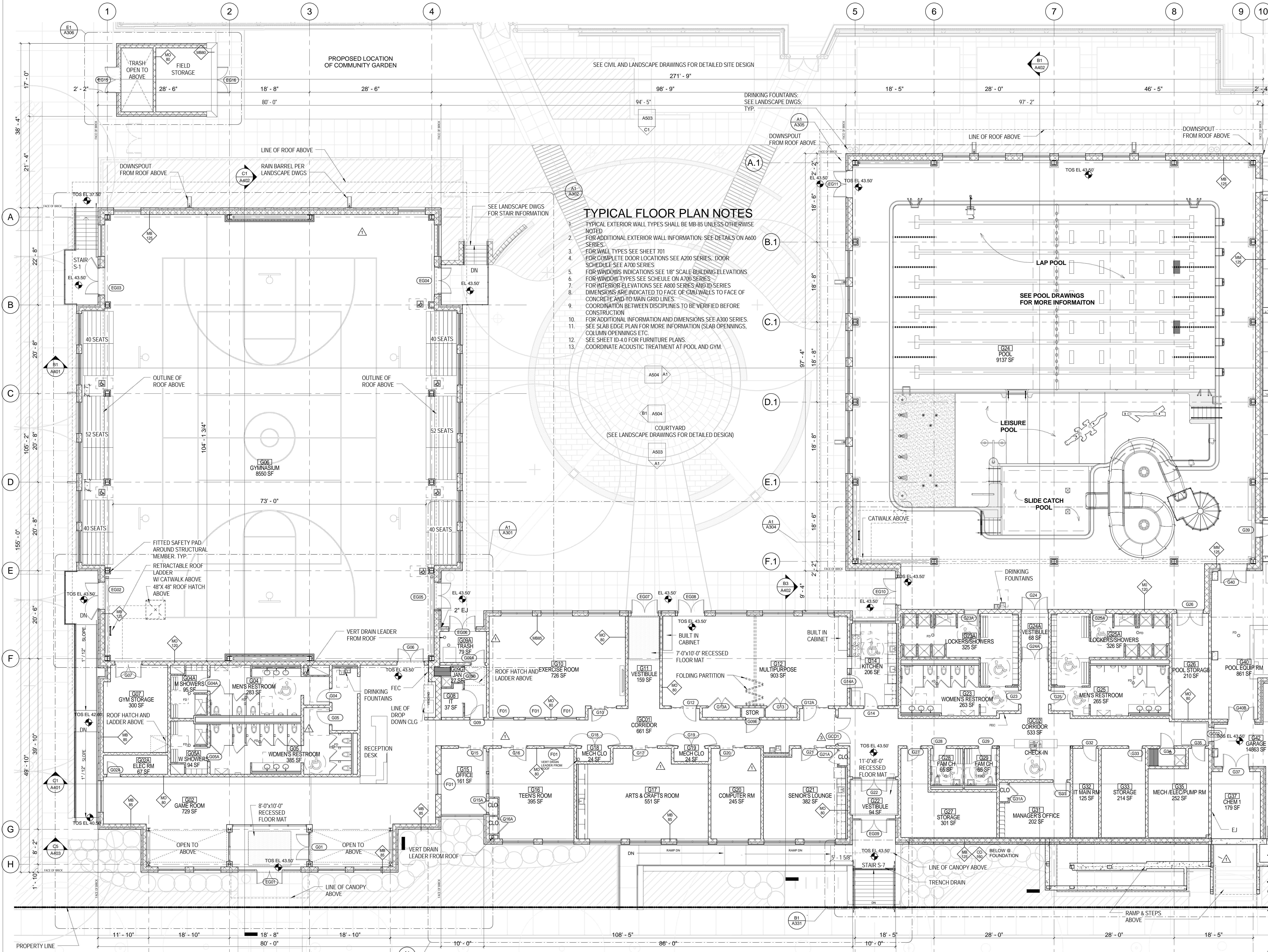
No.	Date
1	3.16.12
2	5.04.12
3	7.30.12
4	3.19.13
5	3.29.13
6	4.15.13
7	5.24.13
8	6.21.13
9	7.12.13

Revisions

No.	Date
1	03.29.2013
2	06.18.13

1/8" Partial Ground Floor Plan

Date: APRIL 15, 2013
Principal In Charge: S.E.
Design Architect: S.A.
Project Architect: M.V., L.D., F.D.
Approved: R.W.
Drawn: K.T., S.F., D.R., A.C.
Job No: 09224.01
Scale: 1/8" = 1'-0"
Drawing No: **A203**



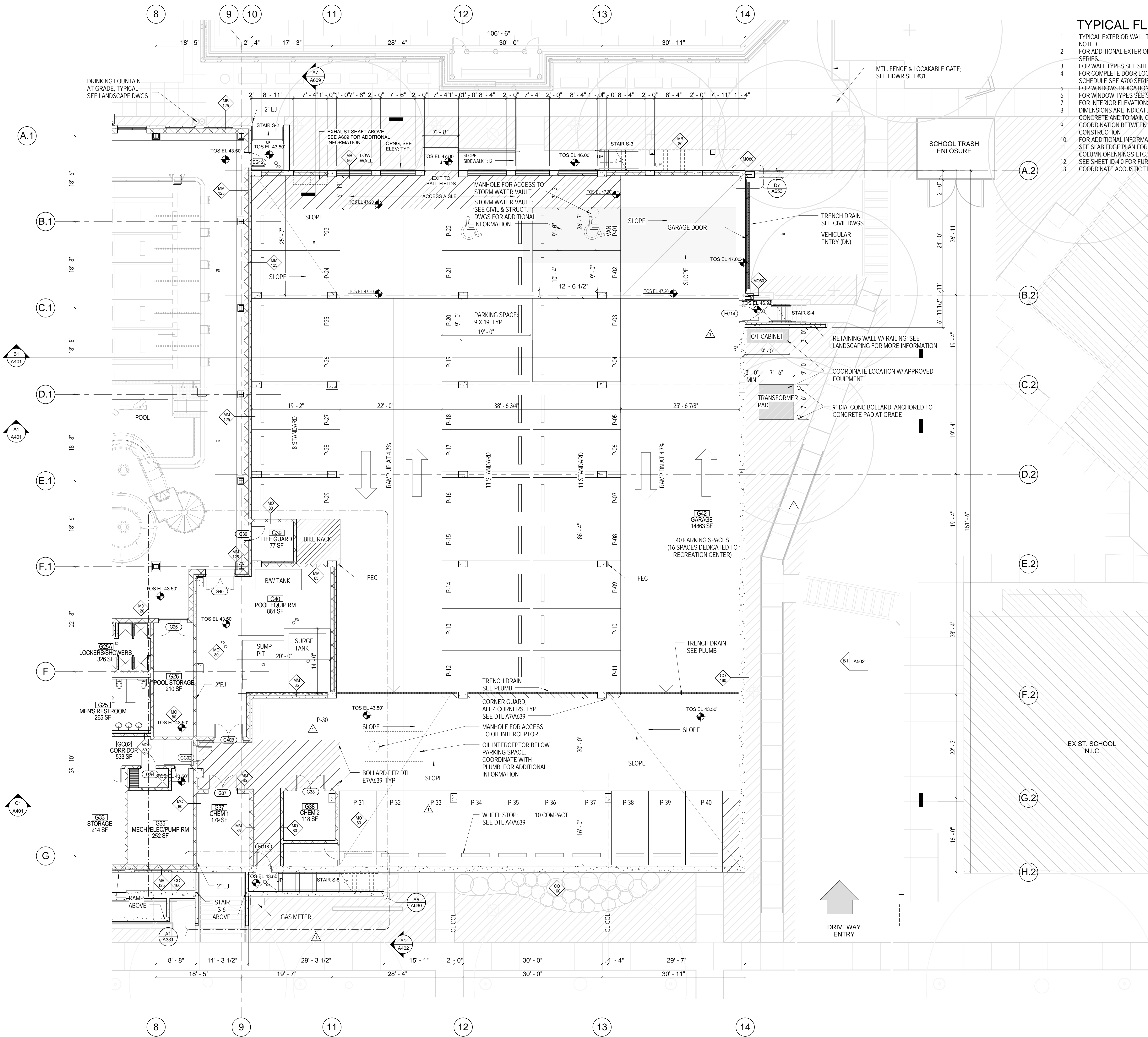
TYPICAL FLOOR PLAN NOTES

1. TYPICAL EXTERIOR WALL TYPES SHALL BE MB-85 UNLESS OTHERWISE NOTED.
2. FOR ADDITIONAL EXTERIOR WALL INFORMATION, SEE DETAILS ON A600 SERIES.
3. FOR WALL TYPES SEE SHEET 701.
4. FOR COMPLETE DOOR LOCATIONS SEE A200 SERIES, DOOR SCHEDULE SEE A700 SERIES.
5. FOR WINDOW INDICATIONS SEE 1/8" SCALE BUILDING ELEVATIONS.
6. FOR WINDOW TYPES SEE SCHEDULE ON A700 SERIES.
7. FOR INTERIOR ELEVATIONS SEE A800 SERIES AND ID SERIES.
8. DIMENSIONS ARE INDICATED TO FACE OF CMU WALLS TO FACE OF CONCRETE AND TO MAIN GRID LINES.
9. COORDINATION BETWEEN DISCIPLINES TO BE VERIFIED BEFORE CONSTRUCTION.
10. FOR ADDITIONAL INFORMATION AND DIMENSIONS SEE A300 SERIES. SEE SLAB EDGE PLAN FOR MORE INFORMATION (SLAB OPENINGS, COLUMN OPENINGS, ETC.).
11. SEE SHEET ID-4.0 FOR FURNITURE PLANS.
12. COORDINATE ACOUSTIC TREATMENT AT POOL AND GYM.
- 13.

A1 GROUND FLOOR PLAN
1/8" = 1'-0"

Issued for Construction Submission 7.12.13

TORTI GALLAS URBAN, INC.



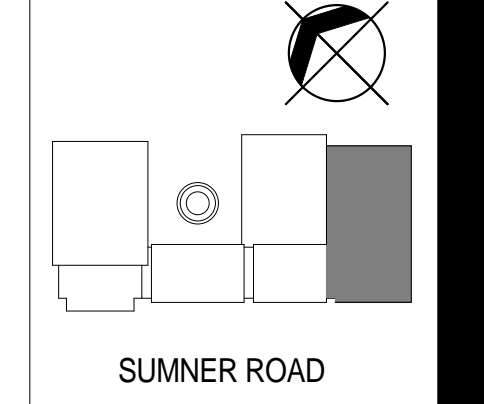
TYPICAL FLOOR PLAN NOTES

1. TYPICAL EXTERIOR WALL TYPES SHALL BE MB-85 UNLESS OTHERWISE NOTED
2. FOR ADDITIONAL EXTERIOR WALL INFORMATION: SEE DETAILS ON A600 SERIES.
3. FOR WALL TYPES SEE SHEET 701
4. FOR COMPLETE DOOR LOCATIONS SEE A200 SERIES. DOOR SCHEDULE SEE A700 SERIES
5. FOR WINDOW INDICATIONS SEE 1/8" SCALE BUILDING ELEVATIONS
6. FOR WINDOW TYPES SEE SCHEULE ON A700 SERIES
7. FOR INTERIOR ELEVATIONS SEE A800 SERIES AND ID SERIES
8. DIMENSIONS ARE INDICATED TO FACE OF CMU WALLS TO FACE OF CONCRETE AND TO MAIN GRID LINES.
9. COORDINATION BETWEEN DISCIPLINES TO BE VERIFIED BEFORE CONSTRUCTION
10. FOR ADDITIONAL INFORMATION AND DIMENSIONS SEE A300 SERIES.
11. SEE SLAB EDGE PLAN FOR MORE INFORMATION (SLAB OPENINGS, COLUMN OPENINGS ETC.)
12. SEE SHEET ID-0 FOR FURNITURE PLANS.
13. COORDINATE ACOUSTIC TREATMENT AT POOL AND GYM.

BARRY FARM RECREATION CENTER

1230 Summer Road, SE
Washington, DC 20020
Architect:
Tort Gallas Urban, Inc.
1316 9th Street, NW
Washington, DC 20001
202.232.3132
www.tortgallas.com
Developer:
Department of General Services
RFK Stadium, Lot 4, Gate F
Washington DC 20003
202.698.7700
Department of Park and Recreation
3149 16th Street, NW
Washington, DC 20010
202.673.7647
Structural Engineer:
SK&A Structural Engineers,
1155 Connecticut Avenue
Suite 800
Washington DC 20036
202.659.2520
MEP Engineer:
Bhargava International, Inc.
7325 Georgia Avenue NW
Washington DC 20012
202.366.6109
Civil Engineer:
Wiles Mensch Corporation
1424 K Street, Suite 302
Washington, DC 20005
202.638.4040
Landscape Architect:
Wiles Mensch Corporation
1424 K Street, Suite 302
Washington, DC 20005
202.638.4040
Pool Design:
SEI Architects
1355 Piccard Dr, Suite 200
Rockville, MD 20850
301.770.0177
Interior Design:
TGU

Key Plan



Issue

No.	Date
00 SET	3.16.12
02 SET	5.04.12
PERMIT REVIEW SET	7.30.12
FTG REVIEW SET	3.19.13
PERMIT REVIEW RESUB	3.29.13
CMR SUBMISSION	4.15.13
FTG SUBMISSION	5.24.13
FOUND COORD PKG	6.21.13
ISSUED FOR CONST	7.12.13

Revisions

No.	Date
1	PERMIT REVISIONS 03.29.2013

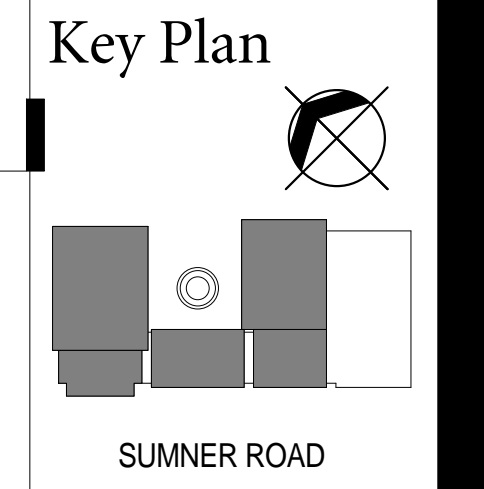
1/8" Partial Ground Floor Plan - Garage

Date
APRIL 15, 2013
Principal In Charge
S.E.
Design Architect
S.A.
Project Architect
M.V., L.D., F.D.
Approved
R.W.
Drawn
K.T., S.F., D.R., A.C.
Job No.
09224.01
Scale
1/8" = 1'-0"
Drawing No.
A204

Issued for Construction Submission *7.12.13

TORTI GALLAS URBAN, INC.

1230 Sumner Road, SE
Washington, DC 20020
Architect:
Torti Gallas Urban, Inc.
1316 9th Street, NW
Washington, DC 20001
202.232.3132
www.tortigallas.com
Developer:
Department of General Services
RFK Stadium, Lot 4, Gate F
Washington DC 20003
202.698.7700
Department of Park and Recreation
3149 16th Street, NW
Washington, DC 20010
202.673.7647
Structural Engineer:
SK&A Structural Engineers,
1155 Connecticut Avenue
Suite 800
Washington DC 20036
202.659.2520
MEP Engineer:
Bhargava International, Inc.
7325 Georgia Avenue NW
Washington DC 20012
202.386.6109
Civil Engineer:
Wiles Mensch Corporation
1424 K Street, Suite 302
Washington, DC 20005
202.638.4040
Landscape Architect:
Wiles Mensch Corporation
1424 K Street, Suite 302
Washington, DC 20005
202.638.4040
Pool Design:
SEI Architects
1355 Piccard Dr, Suite 200
Rockville, MD 20850
301.770.0177
Interior Design:
TGU



Issue

No.	Date
SD SET	3.16.12
DD SET	5.04.12
PERMIT REVIEW SET	7.30.12
FTG REVIEW SET	3.19.13
PERMIT REVIEW RESUB	3.29.13
CMR SUBMISSION	4.15.13
FTG SUBMISSION	5.24.13
FOUND COORD PKG	6.21.13
ISSUED FOR CONST	7.12.13

Revisions

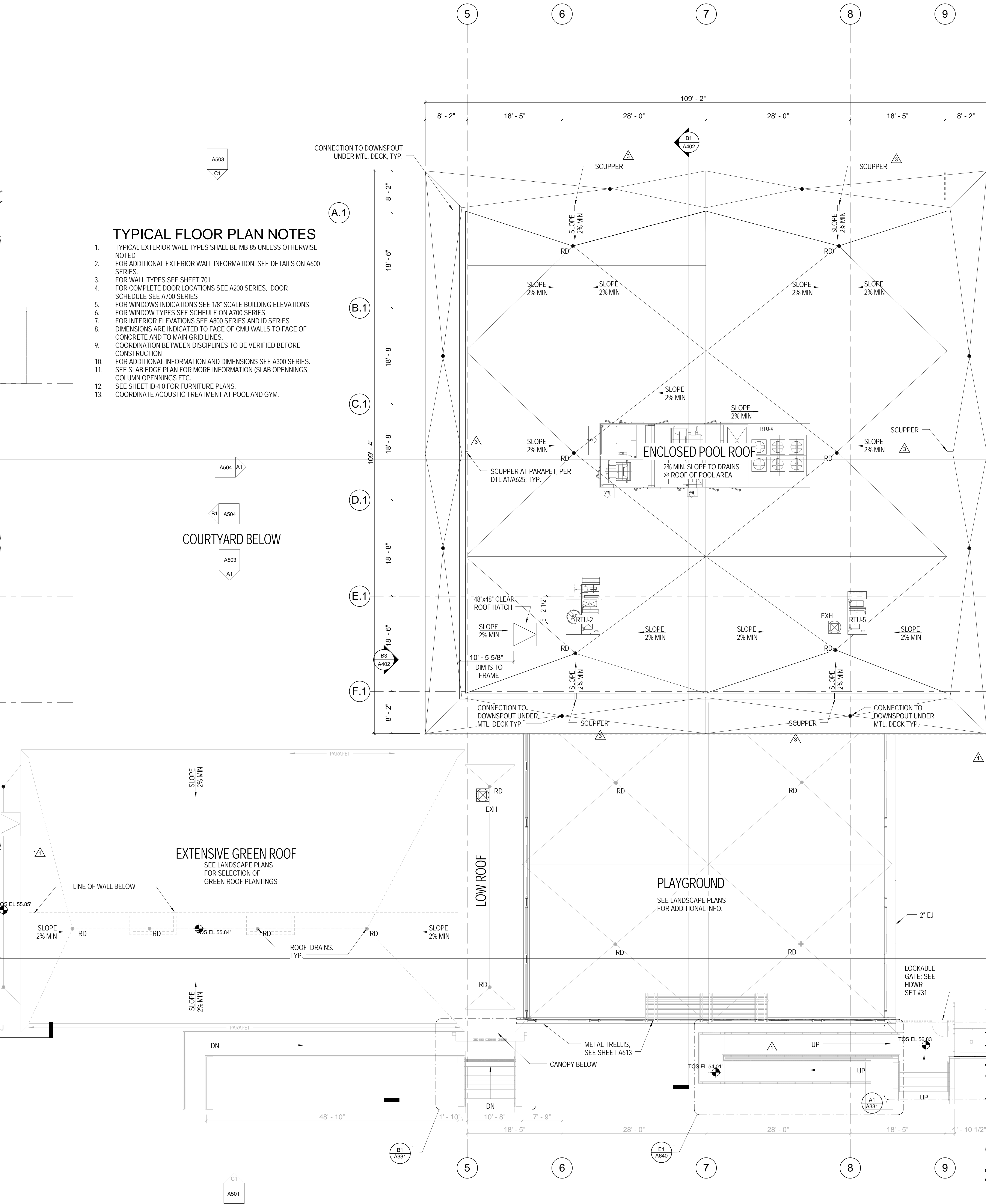
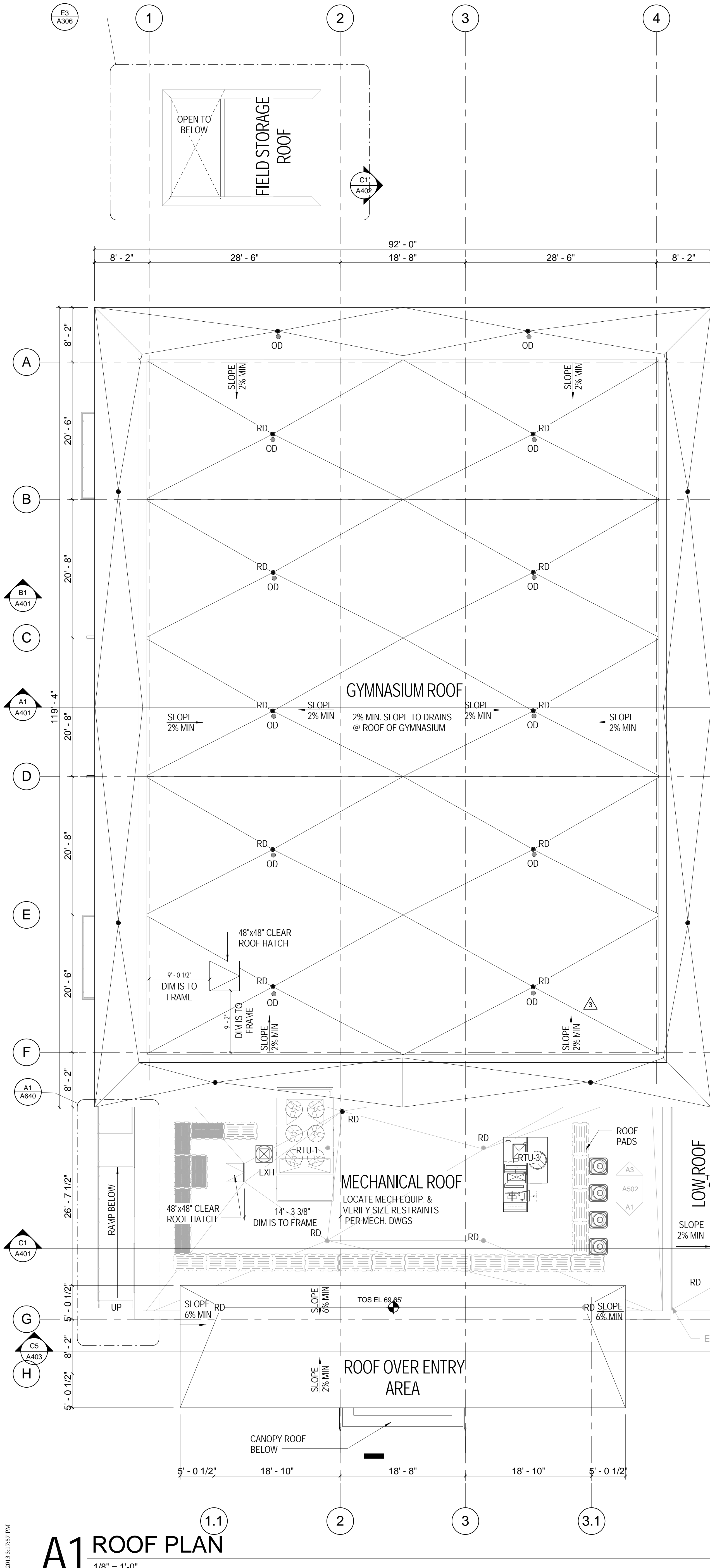
No.	Date
1 PERMIT REVISIONS	03.29.2013
3 Bldg Permit Resub	06.18.13

1/8" Partial Roof Plan

Date: APRIL 15, 2013
Principal in Charge: S.E.
Design Architect: S.A.
Project Architect: M.V., L.D., F.D.
Approved: R.W.
Drawn: K.T., S.F., D.R., A.C.
Job No.: 09224.01
Scale: 1/8" = 1'-0"
Drawing No.: **A205**

TYPICAL FLOOR PLAN NOTES

1. TYPICAL EXTERIOR WALL TYPES SHALL BE MB-85 UNLESS OTHERWISE NOTED
2. FOR ADDITIONAL EXTERIOR WALL INFORMATION: SEE DETAILS ON A600 SERIES.
3. FOR WALL TYPES SEE SHEET 701
4. FOR COMPLETE DOOR LOCATIONS SEE A200 SERIES, DOOR SCHEDULE SEE A700 SERIES
5. FOR WINDOWS INDICATIONS SEE 1/8" SCALE BUILDING ELEVATIONS
6. FOR WINDOW TYPES SEE SCHEDULE ON A700 SERIES
7. FOR INTERIOR ELEVATIONS SEE A800 SERIES AND ID SERIES
8. DIMENSIONS ARE INDICATED TO FACE OF CMU WALLS TO FACE OF CONCRETE AND TO MAIN GRID LINES.
9. COORDINATION BETWEEN DISCIPLINES TO BE VERIFIED BEFORE CONSTRUCTION
10. FOR ADDITIONAL INFORMATION AND DIMENSIONS SEE A300 SERIES.
11. SEE SLAB EDGE PLAN FOR MORE INFORMATION (SLAB OPENINGS, COLUMN OPENINGS ETC.)
12. SEE SHEET ID-4.0 FOR FURNITURE PLANS.
13. COORDINATE ACOUSTIC TREATMENT AT POOL AND GYM.

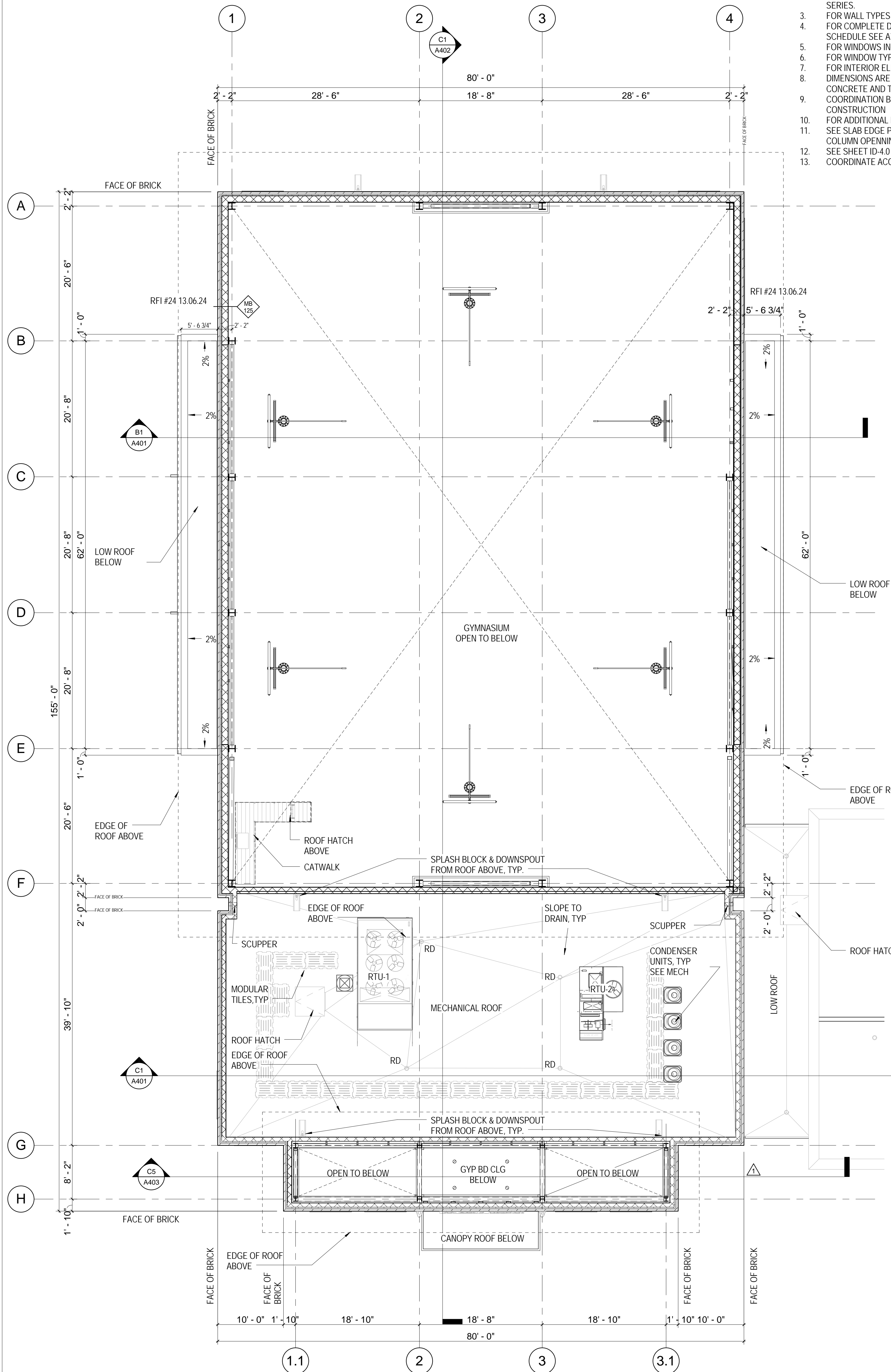


A1 ROOF PLAN
1/8" = 1'-0"

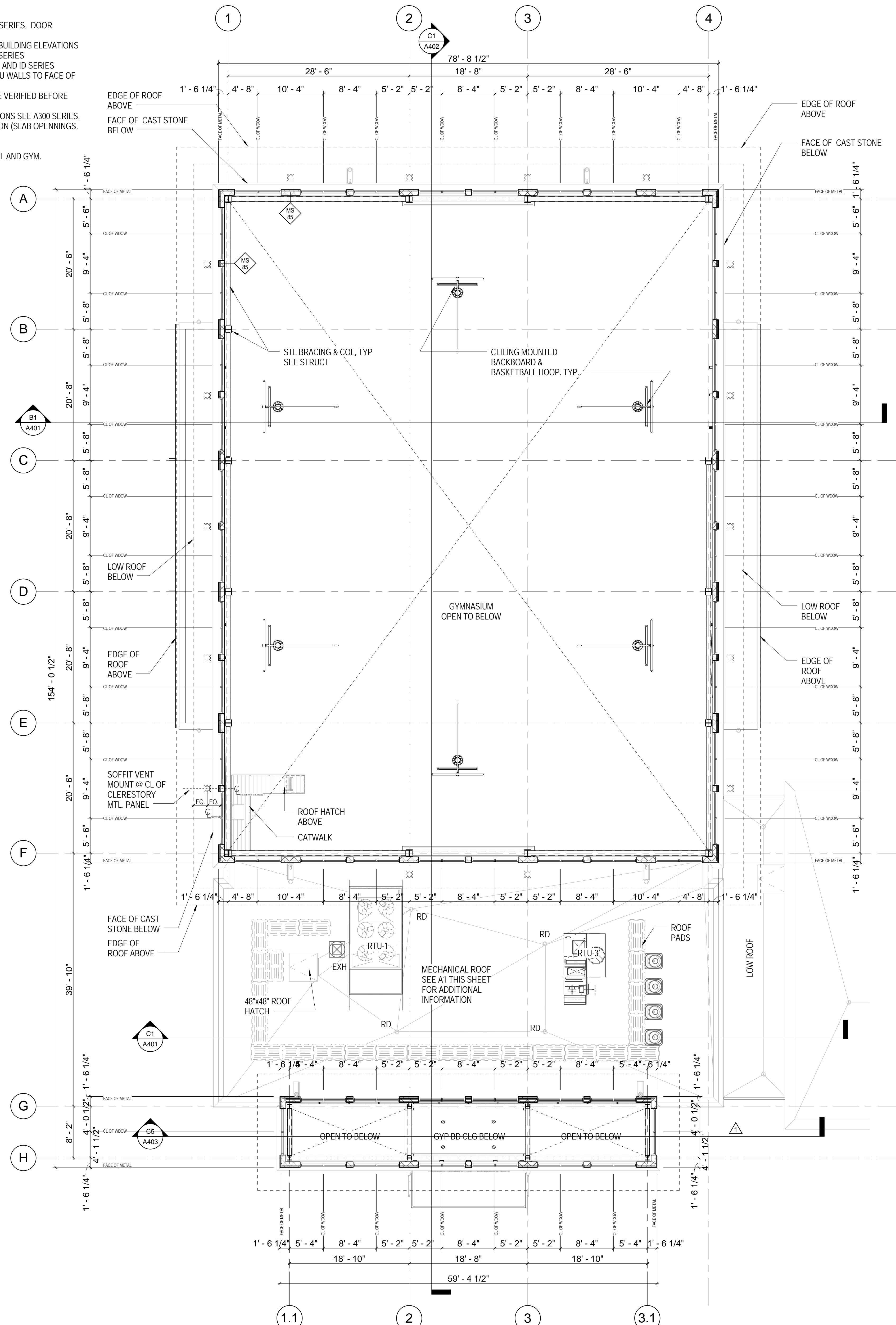
Issued for Construction Submission *7.12.13

TYPICAL FLOOR PLAN NOTES

1. TYPICAL EXTERIOR WALL TYPES SHALL BE MB-85 UNLESS OTHERWISE NOTED
2. FOR ADDITIONAL EXTERIOR WALL INFORMATION: SEE DETAILS ON A600 SERIES.
3. FOR WALL TYPES SEE SHEET 701
4. FOR COMPLETE DOOR LOCATIONS SEE A200 SERIES, DOOR SCHEDULE SEE A700 SERIES
5. FOR WINDOWS INDICATIONS SEE 1/8" SCALE BUILDING ELEVATIONS
6. FOR WINDOW TYPES SEE SCHEDULE ON A700 SERIES
7. FOR INTERIOR ELEVATIONS SEE A800 SERIES AND ID SERIES
8. DIMENSIONS ARE INDICATED TO FACE OF CMU WALLS TO FACE OF CONCRETE AND TO MAIN GRID LINES.
9. COORDINATION BETWEEN DISCIPLINES TO BE VERIFIED BEFORE CONSTRUCTION
10. FOR ADDITIONAL INFORMATION AND DIMENSIONS SEE A300 SERIES. SEE SLAB EDGE PLAN FOR MORE INFORMATION (SLAB OPENINGS, COLUMN OPENINGS ETC.)
11. SEE SHEET ID-4.0 FOR FURNITURE PLANS.
12. COORDINATE ACOUSTIC TREATMENT AT POOL AND GYM.
- 13.



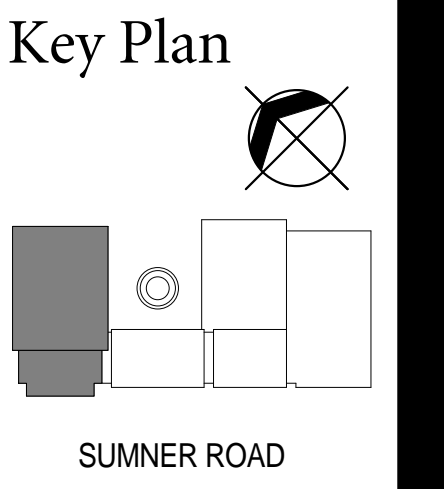
A1 MECHANICAL ROOF PLAN - GYMNASIUM
1/8" = 1'-0"



A3 CLERESTORY PLAN - GYMNASIUM
1/8" = 1'-0"

BARRY FARM RECREATION CENTER

1230 Sumner Road, SE
Washington, DC 20020
Architect:
Torti Gallas Urban, Inc.
1316 9th Street, NW
Washington, DC 20001
202.232.3132
www.tortigallas.com
Developer:
Department of General Services
RFK Stadium, Lot 4, Gate F
Washington DC 20003
202.698.7700
Department of Park and Recreation
3149 16th Street, NW
Washington, DC 20010
202.673.7647
Structural Engineer:
SK&A Structural Engineers,
1155 Connecticut Avenue
Suite 800
Washington DC 20036
202.659.2520
MEP Engineer:
Bhargava International, Inc.
7325 Georgia Avenue NW
Washington DC 20012
202.366.6109
Civil Engineer:
Wiles Mensch Corporation
1424 K Street, Suite 302
Washington, DC 20005
202.638.4040
Landscape Architect:
Wiles Mensch Corporation
1424 K Street, Suite 302
Washington, DC 20005
202.638.4040
Pool Design:
SEI Architects
1355 Piccard Dr, Suite 200
Rockville, MD 20850
301.770.0177
Interior Design:
TGU



Issue

No.	Date
SD SET	3.16.12
DD SET	5.04.12
PERMIT REVIEW SET	7.30.12
FTG REVIEW SET	3.19.13
PERMIT REVIEW RESUB	3.29.13
CMR SUBMISSION	4.15.13
FTG SUBMISSION	5.24.13
FOUND COORD PKG	6.21.13
ISSUED FOR CONST	7.12.13

Revisions

No.	Date
1	PERMIT REVISIONS 03.29.2013
3	Blog Permit Resub 06.18.13

1/8" Mech. Roof & Clerestory Plan - Gym

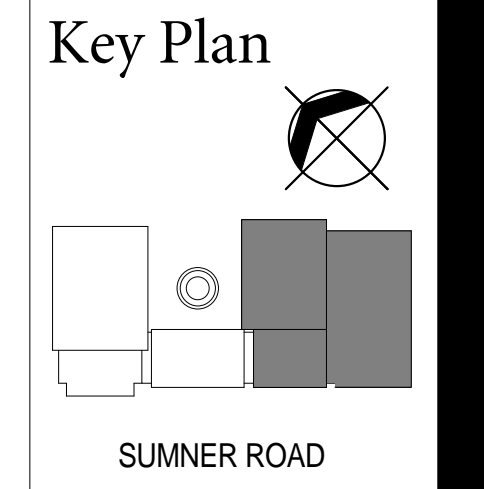
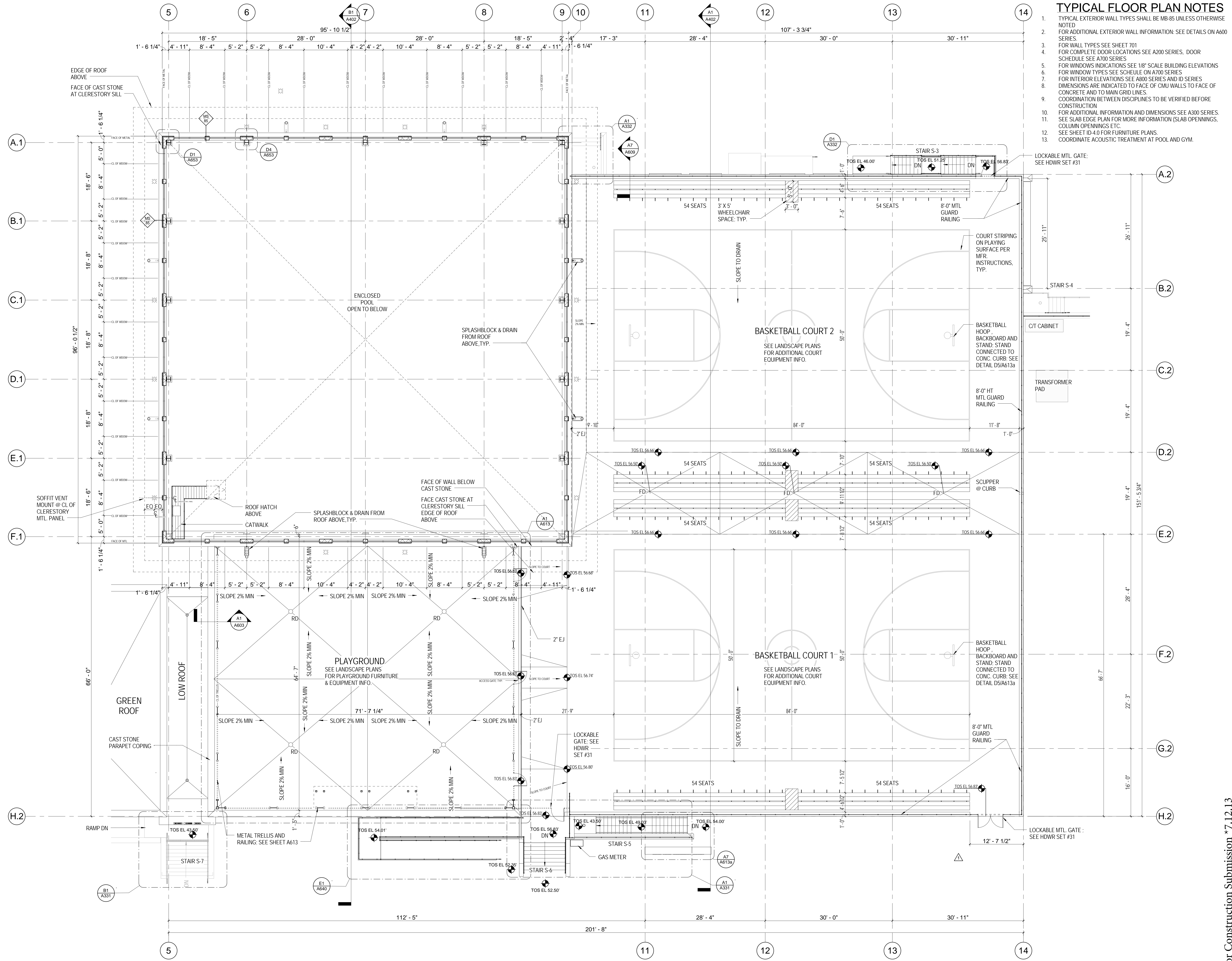
Date
APRIL 15, 2013
Principal In Charge
S.E.
Design Architect
S.A.
Project Architect
M.V., L.D., F.D.
Approved
R.W.
Drawn
K.T., S.F., D.R., A.C.
Job No.
09224.01

Scale
1/8" = 1'-0"
Drawing No.
A206

Issued for Construction Submission *7.12.13

TORTI GALLAS URBAN, INC.

- TYPICAL FLOOR PLAN NOTES**
1. TYPICAL EXTERIOR WALL TYPES SHALL BE MB-85 UNLESS OTHERWISE NOTED
 2. FOR ADDITIONAL EXTERIOR WALL INFORMATION: SEE DETAILS ON A600 SERIES
 3. FOR WALL TYPES SEE SHEET 701
 4. FOR COMPLETE DOOR LOCATIONS SEE A200 SERIES, DOOR SCHEDULE SEE A700 SERIES
 5. FOR WINDOWS INDICATIONS SEE 1/8" SCALE BUILDING ELEVATIONS
 6. FOR WINDOW TYPES SEE SCHEDULE ON A700 SERIES
 7. FOR INTERIOR ELEVATIONS SEE A800 SERIES AND ID SERIES
 8. DIMENSIONS ARE INDICATED TO FACE OF CMU WALLS TO FACE OF CONCRETE AND TO MAIN GRID LINES.
 9. COORDINATION BETWEEN DISCIPLINES TO BE VERIFIED BEFORE CONSTRUCTION
 10. FOR ADDITIONAL INFORMATION AND DIMENSIONS SEE A300 SERIES.
 11. SEE SLAB EDGE PLAN FOR MORE INFORMATION (SLAB OPENINGS, COLUMN OPENINGS ETC.)
 12. SEE SHEET ID-4.0 FOR FURNITURE PLANS.
 13. COORDINATE ACOUSTIC TREATMENT AT POOL AND GYM.



Issue

No.	Date
SD SET	3.16.12
DD SET	5.04.12
PERMIT REVIEW SET	7.30.12
FTG REVIEW SET	3.19.13
PERMIT REVIEW RESUB	3.29.13
CMR SUBMISSION	4.15.13
FTG SUBMISSION	5.24.13
FOUND COORD PKG	6.21.13
ISSUED FOR CONST	7.12.13

Revisions

No.	Date
1	PERMIT REVISIONS 03.29.2013

1/8" Clerestory Plan - Pool and Basketball Courts

Date
APRIL 15, 2013
Principal In Charge
S.E.
Design Architect
S.A.
Project Architect
M.V., L.D., F.D.
Approved
R.W.
Drawn
K.T., S.F., D.R., A.C.
Job No.
09224.01
Scale
1/8" = 1'-0"
Drawing No.
A207

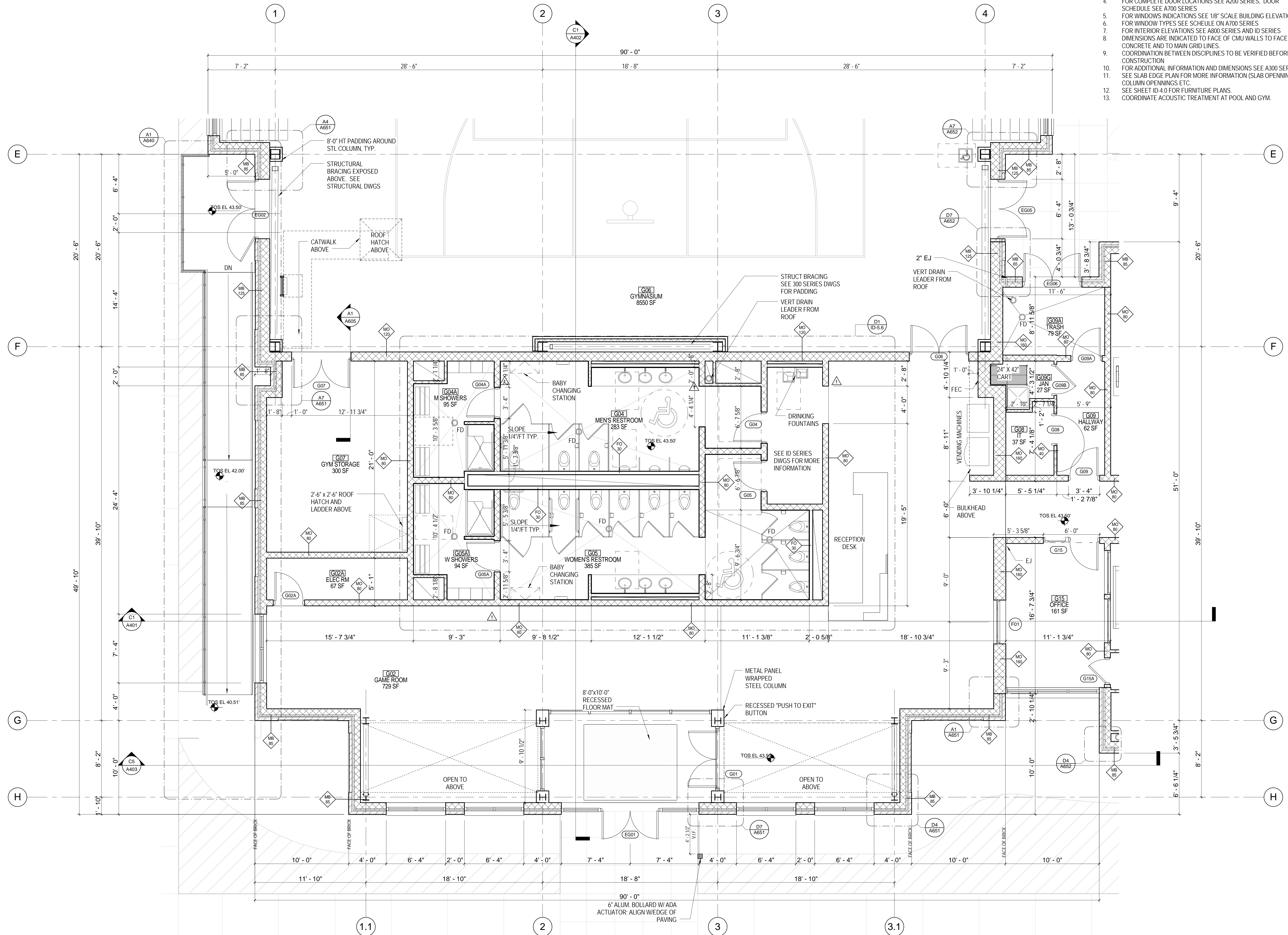
Issued for Construction Submission *7.12.13

A1 CLERESTORY PLAN - POOL AND BASKETBALL COURTS

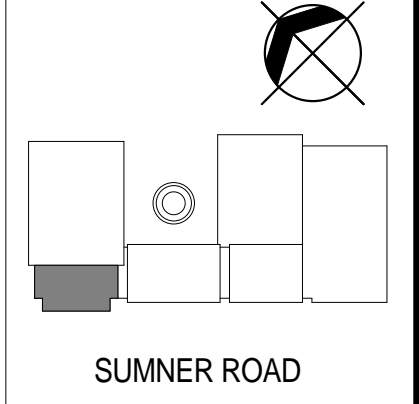
1/8" = 1'-0"

TYPICAL FLOOR PLAN NOTES

1. TYPICAL EXTERIOR WALL TYPES SHALL BE MB-85 UNLESS OTHERWISE NOTED
2. FOR ADDITIONAL EXTERIOR WALL INFORMATION: SEE DETAILS ON A600 SERIES
3. FOR WALL TYPES SEE SHEET 701
4. FOR COMPLETE DOOR LOCATIONS SEE A200 SERIES, DOOR SCHEDULE SEE A700 SERIES
5. FOR WINDOWS INDICATIONS SEE 1/8" SCALE BUILDING ELEVATIONS
6. FOR WINDOW TYPES SEE SCHEDULE ON A700 SERIES
7. FOR INTERIOR ELEVATIONS SEE A800 SERIES AND ID SERIES
8. DIMENSIONS ARE INDICATED TO FACE OF CMU WALLS TO FACE OF CONCRETE AND TO MAIN GRID LINES
9. COORDINATION BETWEEN DISCIPLINES TO BE VERIFIED BEFORE CONSTRUCTION
10. FOR ADDITIONAL INFORMATION AND DIMENSIONS SEE A300 SERIES
11. SEE SLAB EDGE PLAN FOR MORE INFORMATION (SLAB OPENINGS, COLUMN OPENINGS ETC.)
12. SEE SHEET ID-4.0 FOR FURNITURE PLANS.
13. COORDINATE ACOUSTIC TREATMENT AT POOL AND GYM.



Key Plan



Issue

No.	Date
SD SET	3.16.12
DD SET	5.04.12
PERMIT REVIEW SET	7.30.12
FTG REVIEW SET	3.19.13
PERMIT REVIEW RESUB	3.29.13
CMR SUBMISSION	4.15.13
FTG SUBMISSION	5.24.13
FOUND COORD PKG	6.21.13
ISSUED FOR CONST	7.12.13

Revisions

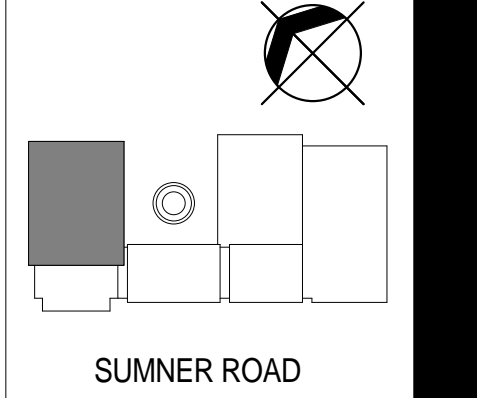
No.	Date
1	03.29.2013

A1 PARTIAL GROUND FLOOR PLAN - ENTRY AREA
1/4" = 1'-0"

1/4" Partial Ground Floor Plan - Entry Area

Issued for Construction Submission *7.12.13
Date: APRIL 15, 2013
Principal In Charge: S.E.
Design Architect: S.A.
Project Architect: M.V., L.D., F.D.
Approved: R.W.
Drawn: K.T., S.F., D.R., A.C.
Job No.: 09224.01
Scale: As Indicated
Drawing No.: **A301**

Key Plan



Issue

No.	Date
SD SET	3.16.12
DD SET	5.04.12
PERMIT REVIEW SET	7.30.12
FTG REVIEW SET	3.19.13
PERMIT REVIEW RESUB	3.29.13
CMR SUBMISSION	4.15.13
FTG SUBMISSION	5.24.13
FOUND COORD PKG	6.21.13
ISSUED FOR CONST	7.12.13

Revisions

No.	Date
-----	------

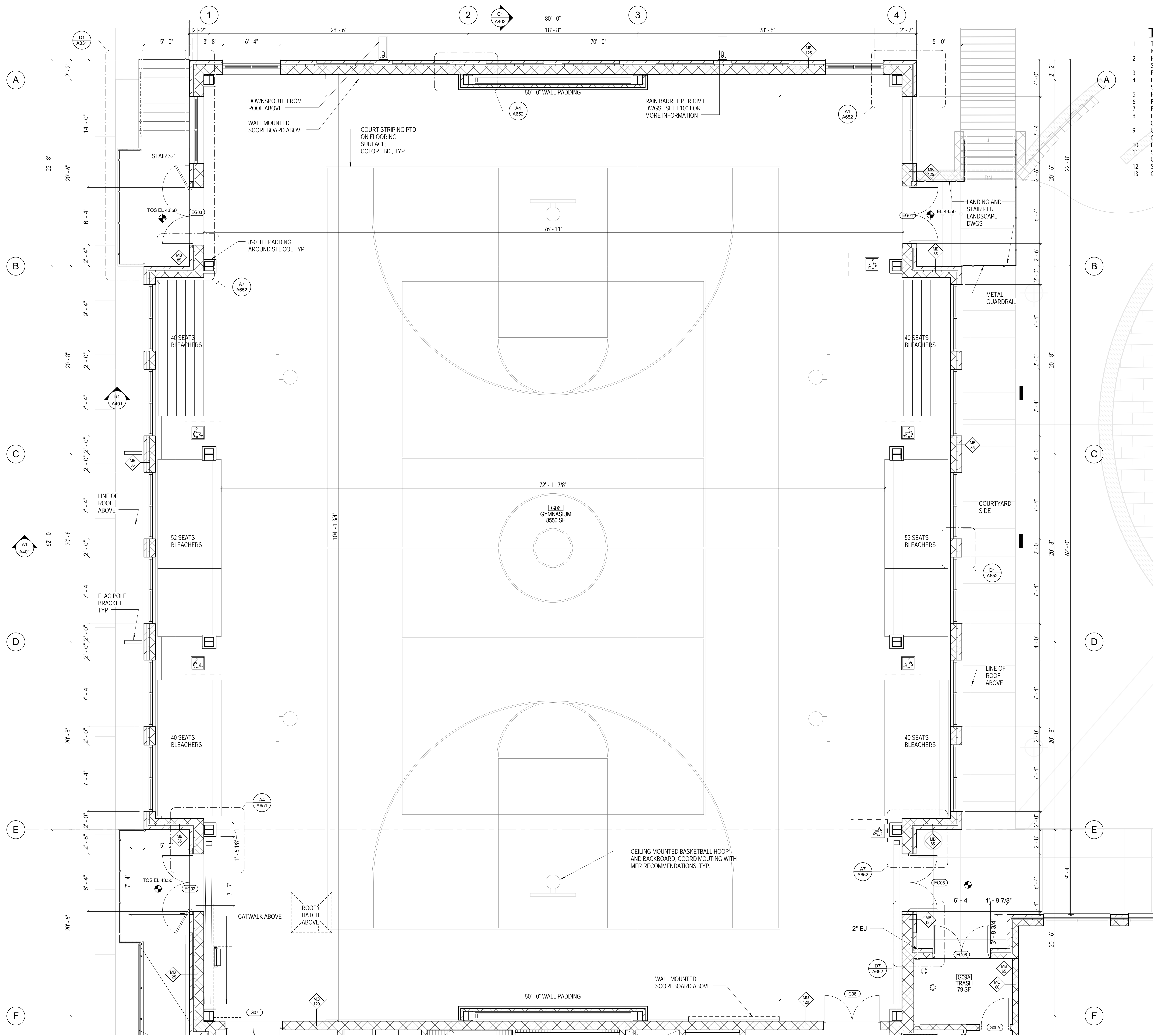
1/4" Partial Ground Floor Plan - Gymnasium

Date
APRIL 15, 2013
Principal In Charge
S.E.
Design Architect
S.A.
Project Architect
M.V., L.D., F.D.
Approved
R.W.
Drawn
K.T., S.F., D.R., A.C.
Job No.
09224.01
Scale
As indicated
Drawing No.

A302

TYPICAL FLOOR PLAN NOTES

1. TYPICAL EXTERIOR WALL TYPES SHALL BE MB-85 UNLESS OTHERWISE NOTED
2. FOR ADDITIONAL EXTERIOR WALL INFORMATION: SEE DETAILS ON A600 SERIES
3. FOR WALL TYPES SEE SHEET 701
4. FOR COMPLETE DOOR LOCATIONS SEE A200 SERIES. DOOR SCHEDULE SEE A700 SERIES
5. FOR WINDOWS INDICATIONS SEE 1/8" SCALE BUILDING ELEVATIONS
6. FOR WINDOW TYPES SEE SCHEDULE ON A700 SERIES
7. FOR INTERIOR ELEVATIONS SEE A800 SERIES AND ID SERIES
8. DIMENSIONS ARE INDICATED TO FACE OF CMU WALLS TO FACE OF CONCRETE AND TO MAIN GRID LINES
9. COORDINATION BETWEEN DISCIPLINES TO BE VERIFIED BEFORE CONSTRUCTION
10. FOR ADDITIONAL INFORMATION AND DIMENSIONS SEE A300 SERIES. SEE SLAB EDGE PLAN FOR MORE INFORMATION (SLAB OPENINGS, COLUMN OPENINGS ETC.)
11. SEE SHEET ID-4.0 FOR FURNITURE PLANS.
12. COORDINATE ACOUSTIC TREATMENT AT POOL AND GYM.



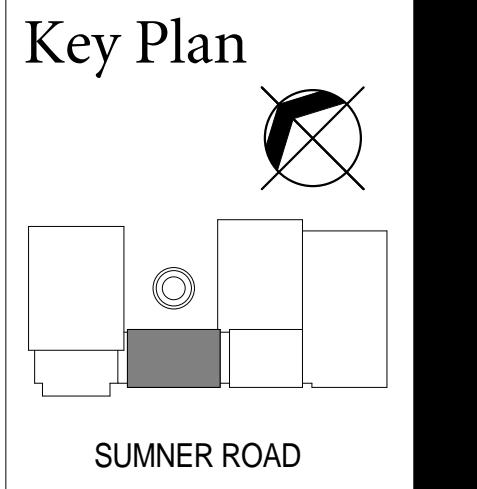
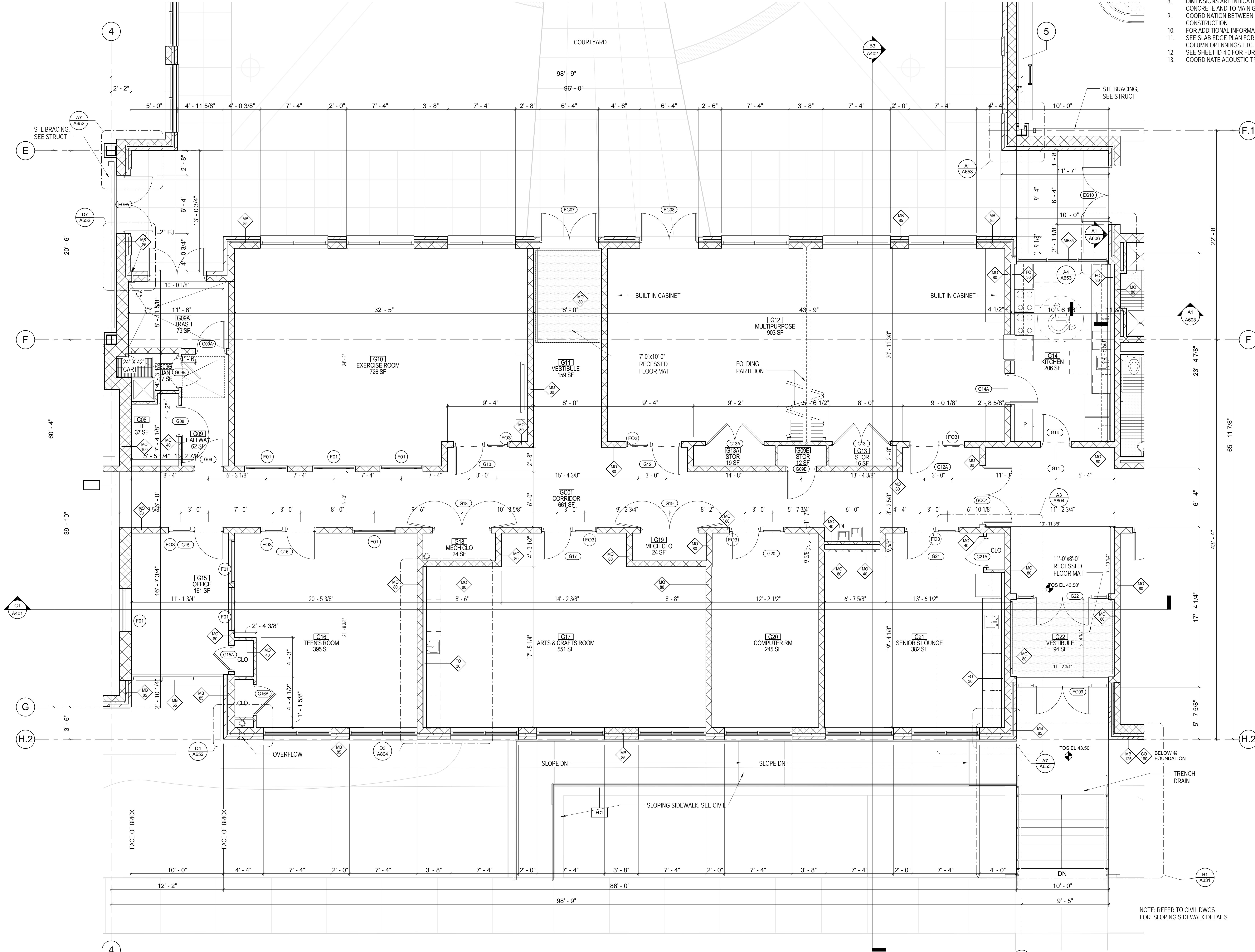
A1 PARTIAL GROUND FLOOR PLAN - GYMNASIUM
1/4" = 1'-0"

Issued for Construction Submission *7.12.13

BARRY FARM RECREATION CENTER

TORTI GALLAS URBAN, INC.

- TYPICAL FLOOR PLAN NOTES**
1. TYPICAL EXTERIOR WALL TYPES SHALL BE MB-85 UNLESS OTHERWISE NOTED.
 2. FOR ADDITIONAL EXTERIOR WALL INFORMATION: SEE DETAILS ON A600 SERIES.
 3. FOR WALL TYPES SEE SHEET 701.
 4. FOR COMPLETE DOOR LOCATIONS SEE A200 SERIES. DOOR SCHEDULE SEE A700 SERIES.
 5. FOR WINDOWS INDICATIONS SEE 1/8" SCALE BUILDING ELEVATIONS.
 6. FOR WINDOW TYPES SEE SCHEDULE ON A700 SERIES.
 7. FOR INTERIOR ELEVATIONS SEE A800 SERIES AND ID SERIES.
 8. DIMENSIONS ARE INDICATED TO FACE OF CMU WALLS TO FACE OF CONCRETE AND TO MAIN GRID LINES.
 9. COORDINATION BETWEEN DISCIPLINES TO BE VERIFIED BEFORE CONSTRUCTION.
 10. FOR ADDITIONAL INFORMATION AND DIMENSIONS SEE A300 SERIES.
 11. SEE SLAB EDGE PLAN FOR MORE INFORMATION (SLAB OPENINGS, COLUMN OPENINGS ETC).
 12. SEE SHEET ID-4.0 FOR FURNITURE PLANS.
 13. COORDINATE ACOUSTIC TREATMENT AT POOL AND GYM.



Issue

No.	Date
SD SET	3.16.12
DD SET	5.04.12
PERMIT REVIEW SET	7.30.12
FTG REVIEW SET	3.19.13
PERMIT REVIEW RESUB	3.29.13
CMR SUBMISSION	4.15.13
FTG SUBMISSION	5.24.13
FOUND COORD PKG	6.21.13
ISSUED FOR CONST	7.12.13

Revisions

No.	Date
1	03.29.2013

1. PERMIT REVISIONS

1/4" Partial Ground Floor Plan - Rec Area

Date: APRIL 15, 2013
Principal in Charge: S.E.
Design Architect: S.A.
Project Architect: M.V., L.D., F.D.
Approved: R.W.
Drawn: K.T., S.F., D.R., A.C.
Job No.: 09224.01
Scale: As indicated
Drawing No.: A303

Issued for Construction Submission *7.12.13

A1 PARTIAL GROUND FLOOR PLAN - CENTRAL AREA
1/4" = 1'-0"

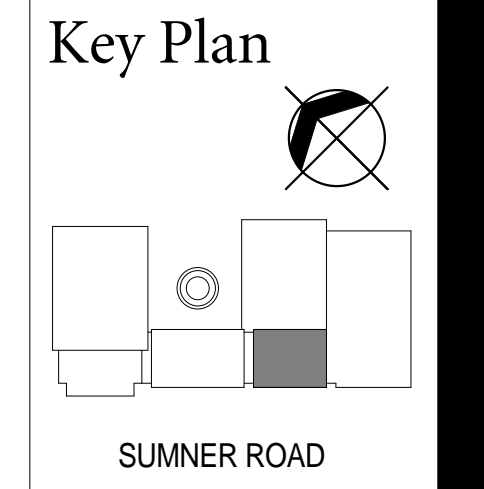
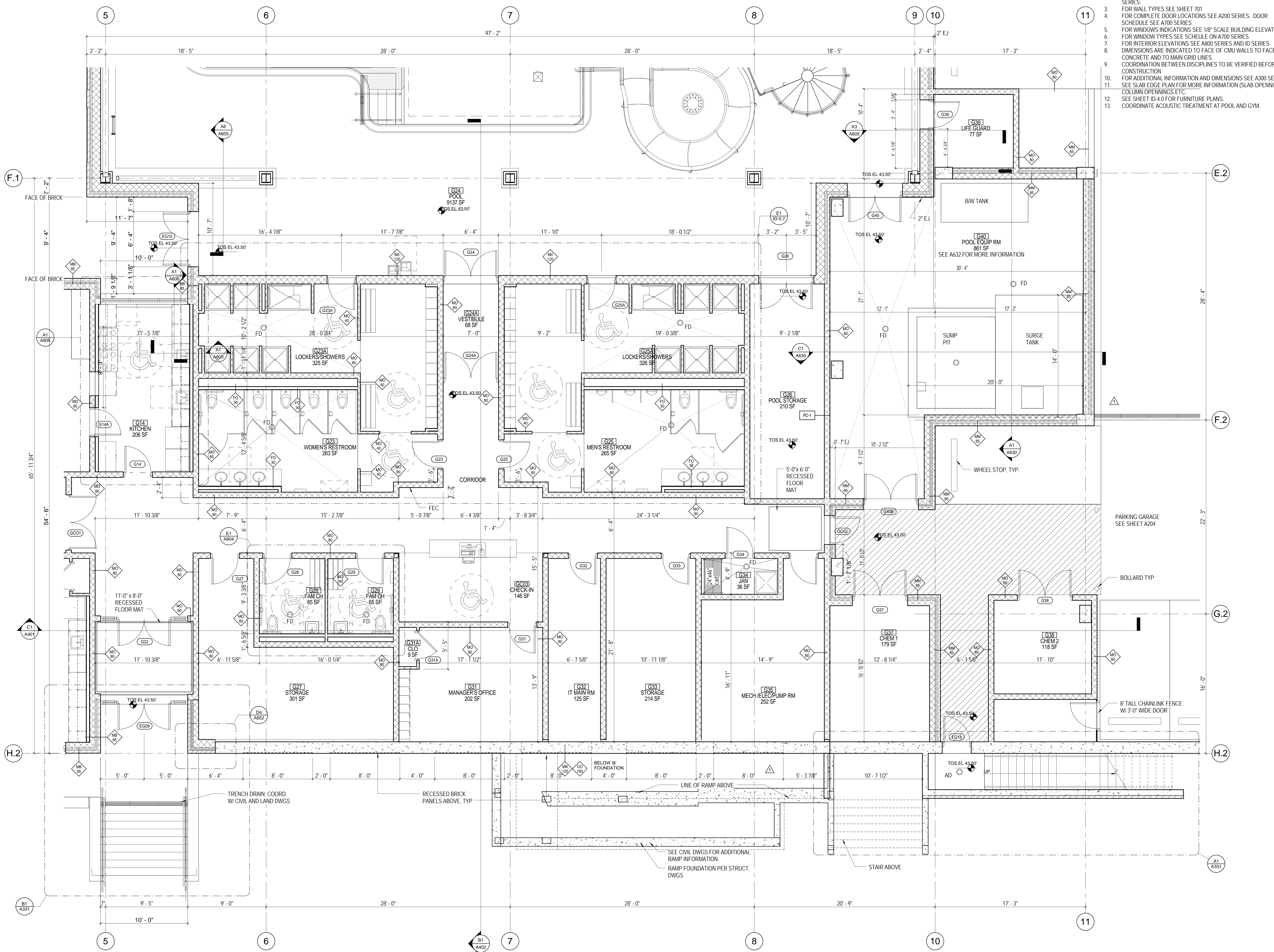
TORTI GALLAS URBAN, INC.

TYPICAL FLOOR PLAN NOTES

1. TYPICAL EXTERIOR WALL TYPES SHALL BE MB-85 UNLESS OTHERWISE NOTED
2. FOR ADDITIONAL EXTERIOR WALL INFORMATION: SEE DETAILS ON A600 SERIES.
3. FOR WALL TYPES SEE SHEET 701
4. FOR COMPLETE DOOR LOCATIONS SEE A200 SERIES, DOOR SCHEDULE SEE A700 SERIES
5. FOR WINDOWS INDICATIONS SEE 1/8" SCALE BUILDING ELEVATIONS
6. FOR WINDOW TYPES SEE SCHEDULE ON A700 SERIES
7. FOR INTERIOR ELEVATIONS SEE A800 SERIES AND ID SERIES
8. DIMENSIONS ARE INDICATED TO FACE OF CMU WALLS TO FACE OF CONCRETE AND TO MAIN GRID LINES.
9. COORDINATION BETWEEN DISCIPLINES TO BE VERIFIED BEFORE CONSTRUCTION
10. FOR ADDITIONAL INFORMATION AND DIMENSIONS SEE A300 SERIES.
11. SEE SLAB EDGE PLAN FOR MORE INFORMATION (SLAB OPENINGS, COLUMN OPENINGS ETC.
12. SEE SHEET ID-4.0 FOR FURNITURE PLANS.
13. COORDINATE ACOUSTIC TREATMENT AT POOL AND GYM.

BARRY FARM RECREATION CENTER

1230 Summer Road, SE
Washington, DC 20020
Architect:
Torti Gallas Urban, Inc.
1316 9th Street, NW
Washington, DC 20001
202.232.3132
www.tortigallas.com
Developer:
Department of General Services
RFK Stadium, Lot 4, Gate F
Washington DC 20003
202.698.7700
Department of Park and Recreation
3149 16th Street, NW
Washington, DC 20010
202.673.7647
Structural Engineer:
SK&A Structural Engineers,
1155 Connecticut Avenue
Suite 800
Washington DC 20036
202.659.2520
MEP Engineer:
Bhargava International, Inc.
7325 Georgia Avenue NW
Washington DC 20012
202.366.6109
Civil Engineer:
Wiles Mensch Corporation
1424 K Street, Suite 302
Washington, DC 20005
202.638.4040
Landscape Architect:
Wiles Mensch Corporation
1424 K Street, Suite 302
Washington, DC 20005
202.638.4040
Pool Design:
SEI Architects
1355 Piccard Dr, Suite 200
Rockville, MD 20850
301.770.0177
Interior Designer:
TGU



Issue

No.	Date
1	03.16.12
2	03.16.12
3	03.16.12
4	03.16.12
5	03.16.12
6	03.16.12
7	03.16.12
8	03.16.12
9	03.16.12
10	03.16.12
11	03.16.12
12	03.16.12
13	03.16.12

Revisions

No.	Date
1	03.29.2013

1/4" Partial Ground Floor Plan - Pool House

Date: APRIL 15, 2013
Principal In Charge: S.E.
Design Architect: S.A.
Project Architect: M.V., L.D., F.D.
Approved: R.W.
Drawn: K.T., S.F., D.R., A.C.
Job No.: 09224.01
Scale: As Indicated
Drawing No.: A304

A1 PARTIAL GROUND FLOOR PLAN - POOL HOUSE AREA
1/4" = 1'-0"

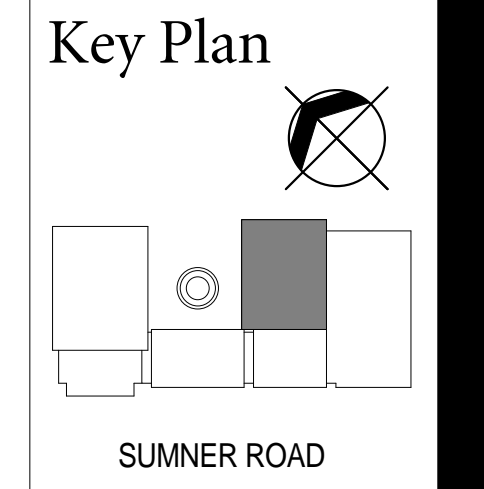
Issued for Construction Submission *7.12.13

BARRY FARM RECREATION CENTER

TORTI GALLAS URBAN, INC.



1230 Summer Road, SE
Washington, DC 20020
Architect:
Torti Gallas Urban, Inc.
1316 9th Street, NW
Washington, DC 20001
202.232.3132
www.tortigallas.com
Developer:
Department of General Services
RFK Stadium, Lot 4, Gate F
Washington DC 20003
202.698.7700
Department of Park and Recreation
3149 16th Street, NW
Washington, DC 20010
202.673.7647
Structural Engineer:
SK&A Structural Engineers,
1155 Connecticut Avenue
Suite 800
Washington DC 20036
202.659.2520
MEP Engineer:
Bhargava International, Inc.
7325 Georgia Avenue NW
Washington DC 20012
202.366.6109
Civil Engineer:
Wiles Mensch Corporation
1424 K Street, Suite 302
Washington, DC 20005
202.638.4040
Landscape Architect:
Wiles Mensch Corporation
1424 K Street, Suite 302
Washington, DC 20005
202.638.4040
Pool Design:
SEI Architects
1355 Piccard Dr, Suite 200
Rockville, MD 20850
301.770.0177
Interior Design:
TGU



Issue

No.	Date
SD SET	3.16.12
DD SET	5.04.12
PERMIT REVIEW SET	7.30.12
FTG REVIEW SET	3.19.13
PERMIT REVIEW RESUB	3.29.13
CMR SUBMISSION	4.15.13
FTG SUBMISSION	5.24.13
FOUND COORD PKG	6.21.13
ISSUED FOR CONST	7.12.13

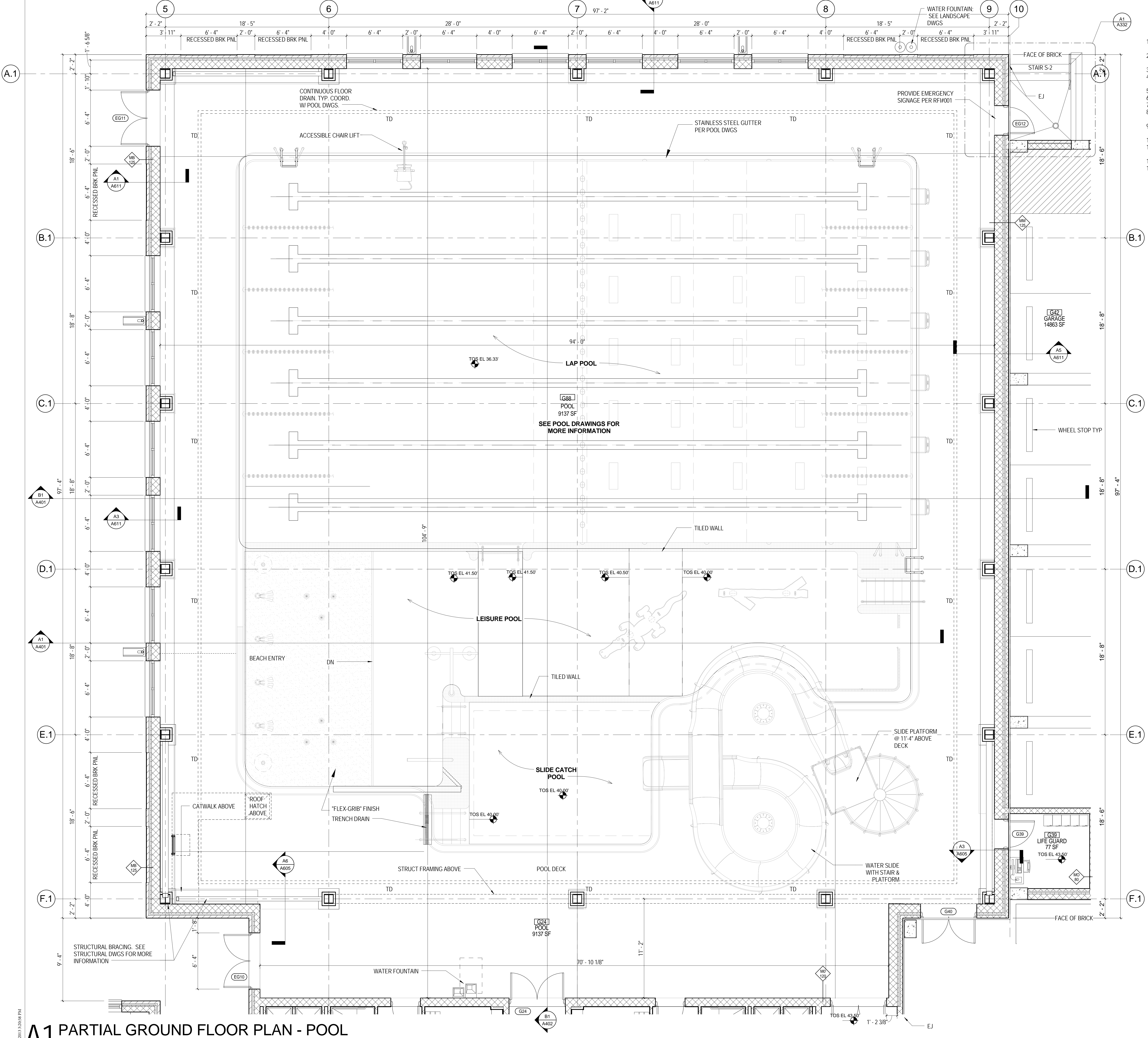
Revisions

No.	Date
-----	------

1/4" Partial Ground Floor Plan - Pool

Date
APRIL 15, 2013
Principal In Charge
S.E.
Design Architect
S.A.
Project Architect
M.V., L.D., F.D.
Approved
R.W.
Drawn
K.T., S.F., D.R., A.C.
Job No.
09224.01
Scale
As indicated
Drawing No.
A305

- TYPICAL FLOOR PLAN NOTES**
1. TYPICAL EXTERIOR WALL TYPES SHALL BE MB-85 UNLESS OTHERWISE NOTED
 2. FOR ADDITIONAL EXTERIOR WALL INFORMATION: SEE DETAILS ON A600 SERIES
 3. FOR WALL TYPES SEE SHEET 701
 4. FOR COMPLETE DOOR LOCATIONS SEE A200 SERIES, DOOR SCHEDULE SEE A700 SERIES
 5. FOR WINDOWS INDICATIONS SEE 1/8" SCALE BUILDING ELEVATIONS
 6. FOR WINDOW TYPES SEE SCHEDULE ON A700 SERIES
 7. FOR INTERIOR ELEVATIONS SEE A800 SERIES AND ID SERIES
 8. DIMENSIONS ARE INDICATED TO FACE OF CMU WALLS TO FACE OF CONCRETE AND TO MAIN GRID LINES.
 9. COORDINATION BETWEEN DISCIPLINES TO BE VERIFIED BEFORE CONSTRUCTION
 10. FOR ADDITIONAL INFORMATION AND DIMENSIONS SEE A300 SERIES.
 11. SEE SLAB EDGE PLAN FOR MORE INFORMATION (SLAB OPENINGS, COLUMN OPENINGS ETC.)
 12. SEE SHEET ID-4.0 FOR FURNITURE PLANS.
 13. COORDINATE ACOUSTIC TREATMENT AT POOL AND GYM.



A1 PARTIAL GROUND FLOOR PLAN - POOL
1/4" = 1'-0"

Issued for Construction Submission *7.12.13

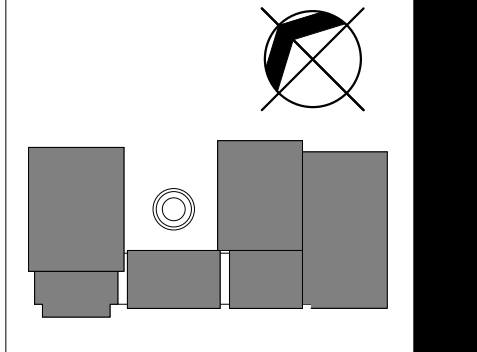
BARRY FARM RECREATION CENTER

1230 Summer Road, SE
Washington, DC 20020
Architect:
Torti Gallas Urban, Inc.
1316 9th Street, NW
Washington, DC 20001
202.232.3132
www.torigallas.com
Developer:
Department of General Services
RFK Stadium, Lot 4, Gate F
Washington DC 20003
202.698.7700

Department of Park and Recreation
3149 16th Street, NW
Washington, DC 20010
202.673.7647
Structural Engineer:
SK&A Structural Engineers,
1155 Connecticut Avenue
Suite 900
Washington DC 20036
202.659.2520
MEP Engineer:
Bhargava International, Inc.
7325 Georgia Avenue NW
Washington DC 20012
202.366.6109

Civil Engineer:
Wiles Mensch Corporation
1424 K Street, Suite 302
Washington, DC 20005
202.638.4040
Landscape Architect:
Wiles Mensch Corporation
1424 K Street, Suite 302
Washington, DC 20005
202.638.4040
Pool Design:
SEI Architects
1355 Piccard Dr, Suite 200
Rockville, MD 20850
301.770.0177
Interior Design:
TGU

Key Plan



Issue

No.	Date
SD SET	3.16.12
DD SET	5.04.12
PERMIT REVIEW SET	7.30.12
FTG REVIEW SET	3.19.13
PERMIT REVIEW RESUB	3.29.13
CMR SUBMISSION	4.15.13
FTG SUBMISSION	5.24.13
FOUND COORD PKG	6.21.13
ISSUED FOR CONST	7.12.13

Revisions

No.	Date
-----	------

Room Schedule

Date
APRIL 15, 2013
Principal In Charge
S.E.
Design Architect
S.A.
Project Architect
M.V., L.D., F.D.
Approved
R.W.
Drawn
K.T., S.F., D.R., A.C.
Job No.
09224.01
Scale

Drawing No.
A706

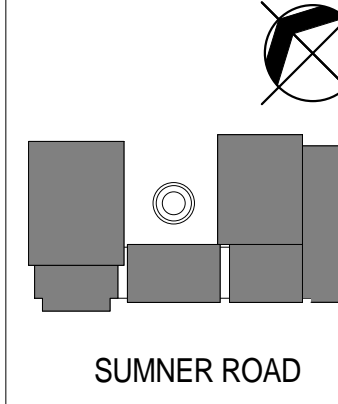
ROOM SCHEDULE GROUND FLOOR							
Room Number	Room Name	Area	Floor	Base	Wall	Ceiling	Ceiling Height
G01	VESTIBULE	1139 SF	TERRAZO	VINYL	STOREFRONT	GYPSUM PAINTED	11' - 4"
G02	GAME ROOM	729 SF	TERRAZO	VINYL	PAINTED CMU W/ SCUFFMASTER WAINSCOT	GYPSUM PAINTED	11' - 4"
G02A	ELEC RM	67 SF	SEALED CONC	NONE	UNFINISHED CMU	NONE	11' - 4"
G04	MEN'S RESTROOM	283 SF	12" X 12" CERAMIC TILE W/ SIM COLOR GROUT	CERAMIC TILE	PAINTED CMU W/ 3" X 3" TILE ACCENT WALLS	GYPSUM PAINTED	8' - 0"
G04A	M SHOWERS	95 SF	12" X 12" CERAMIC TILE W/ SIM COLOR GROUT	CERAMIC TILE	PAINTED CMU / 3" X 3" TILE AT SHOWER	GYPSUM PAINTED	8' - 0"
G05	WOMEN'S RESTROOM	385 SF	12" X 12" CERAMIC TILE W/ SIM COLOR GROUT	CERAMIC TILE	PAINTED CMU W/ 3" X 3" TILE ACCENT WALLS	GYPSUM PAINTED	8' - 0"
G05A	W SHOWERS	94 SF	12" X 12" CERAMIC TILE W/ SIM COLOR GROUT	CERAMIC TILE	PAINTED CMU / 3" X 3" TILE AT SHOWER	GYPSUM PAINTED	8' - 0"
G06	GYMNASIUM	8550 SF	WOOD	NONE	PAINTED CMU	EXPOSED, PAINTED W/ PANELS	25' - 0"
G07	GYM STORAGE	300 SF	SEALED CONC	VINYL	PAINTED CMU	NONE	11' - 4"
G08	IT	37 SF	SEALED CONC	NONE	PAINTED CMU	NONE	11' - 4"
G09	HALLWAY	62 SF	SEALED CONC	NONE	UNFINISHED CMU	NONE	11' - 4"
G09A	TRASH	79 SF	SEALED CONC	NONE	UNFINISHED CMU	NONE	11' - 4"
G09B	CLO.	8 SF					
G09C	CLO	8 SF					
G09E	STOR	12 SF					
G09F	CLO	8 SF					
G09G	JAN	27 SF					
G10	EXERCISE ROOM	726 SF	RUBBERIZED TILES	VINYL	PAINTED CMU	2' X 2' ACOUSTIC TILE	9' - 0"
G11	VESTIBULE	159 SF	TERRAZO	VINYL	PAINTED CMU	2' X 2' ACOUSTIC TILE	9' - 0"
G12	MULTIPURPOSE	903 SF	TERRAZO	VINYL	PAINTED CMU	2' X 2' ACOUSTIC TILE	9' - 0"
G13	STOR	16 SF	TERRAZO	VINYL	PAINTED CMU	2' X 2' ACOUSTIC TILE	9' - 0"
G13A	STOR	19 SF	TERRAZO	VINYL	PAINTED CMU	2' X 2' ACOUSTIC TILE	9' - 0"
G14	KITCHEN	206 SF	EPOXY COATING	QUARRY TILE	PAINTED CMU	2' X 2' ACOUSTIC TILE	9' - 0"
G15	OFFICE	161 SF	CARPET TILES 24" X 24"	VINYL	PAINTED CMU	2' X 2' ACOUSTIC TILE	9' - 0"
G16	TEEN'S ROOM	395 SF	TERRAZO	VINYL	PAINTED CMU	2' X 2' ACOUSTIC TILE	9' - 0"
G17	ARTS & CRAFTS ROOM	551 SF	TERRAZO	VINYL	PAINTED CMU	2' X 2' ACOUSTIC TILE	9' - 0"
G18	MECH CLO	24 SF	SEALED CONC	NONE	PAINTED CMU	NONE	11' - 4"
G19	MECH CLO	24 SF	SEALED CONC	NONE	PAINTED CMU	NONE	11' - 4"
G20	COMPUTER RM	245 SF	CARPET TILES 24" X 24"	VINYL	PAINTED CMU	2' X 2' ACOUSTIC TILE	9' - 0"
G21	SENIOR'S LOUNGE	382 SF	TERRAZO	VINYL	PAINTED CMU	2' X 2' ACOUSTIC TILE	9' - 0"
G22	VESTIBULE	94 SF	TERRAZO	VINYL	PAINTED CMU	GYPSUM PAINTED	9' - 0"
G23	WOMEN'S RESTROOM	263 SF	12" X 12" CERAMIC TILE W/ SIM COLOR GROUT	CERAMIC TILE	PAINTED CMU W/ 3" X 3" TILE ACCENT WALLS	GYPSUM PAINTED	8' - 0"
G23A	LOCKERS/SHOWERS	325 SF	12" X 12" CERAMIC TILE W/ SIM COLOR GROUT	CERAMIC TILE	PAINTED CMU / 3" X 3" TILE AT SHOWER	GYPSUM PAINTED	8' - 0"
G24	POOL	9137 SF	TO BE DETERMINED	VINYL	PAINTED CMU	EXPOSED, PAINTED W/ PANELS	25' - 0"
G24A	VESTIBULE	68 SF	TERRAZO	VINYL	PAINTED CMU	2' X 2' ACOUSTIC TILE	9' - 0"
G25	MEN'S RESTROOM	265 SF	12" X 12" CERAMIC TILE W/ SIM COLOR GROUT	CERAMIC TILE	PAINTED CMU W/ 3" X 3" TILE ACCENT WALLS	2' X 2' ACOUSTIC TILE	8' - 0"
G25A	LOCKERS/SHOWERS	326 SF	12" X 12" CERAMIC TILE W/ SIM COLOR GROUT	CERAMIC TILE	PAINTED CMU / 3" X 3" TILE AT SHOWER	2' X 2' ACOUSTIC TILE	8' - 0"
G26	POOL STORAGE	210 SF	SEALED CONC	VINYL	PAINTED CMU	NONE	11' - 4"
G27	STORAGE	301 SF	SEALED CONC	NONE	UNFINISHED CMU	NONE	11' - 4"
G28	FAM CH	65 SF	12" X 12" CERAMIC TILE W/ SIM COLOR GROUT	CERAMIC TILE	PAINTED CMU / 3" X 3" TILE AT SHOWER	2' X 2' ACOUSTIC TILE	9' - 0"
G29	FAM CH	65 SF	12" X 12" CERAMIC TILE W/ SIM COLOR GROUT	CERAMIC TILE	PAINTED CMU / 3" X 3" TILE AT SHOWER	2' X 2' ACOUSTIC TILE	9' - 0"
G31	MANAGER'S OFFICE	202 SF	CARPET TILES 24" X 24"	VINYL	PAINTED CMU	2' X 2' ACOUSTIC TILE	9' - 0"
G31A	CLO	9 SF	CARPET TILES 24" X 24"	VINYL	PAINTED CMU	NONE	11' - 4"
G32	IT MAIN RM	125 SF	SEALED CONC	NONE	UNFINISHED CMU	NONE	11' - 4"
G33	STORAGE	214 SF	SEALED CONC	NONE	UNFINISHED CMU	NONE	11' - 4"
G34	JAN	36 SF	SEALED CONC	NONE	UNFINISHED CMU	NONE	11' - 4"
G35	MECH/ELEC/PUMP RM	252 SF	SEALED CONC	NONE	UNFINISHED CMU	NONE	11' - 4"
G37	CHEM 1	179 SF	SEALED CONC	NONE	UNFINISHED CMU	NONE	11' - 4"
G38	CHEM 2	118 SF	SEALED CONC	NONE	UNFINISHED CMU	NONE	11' - 4"
G39	LIFE GUARD	77 SF	SEALED CONC	NONE	UNFINISHED CMU	NONE	11' - 4"
G40	POOL EQUIP RM	861 SF	SEALED CONC	NONE	UNFINISHED CMU	NONE	11' - 4"
G42	GARAGE	14863 SF	SEALED CONC	NONE	UNFINISHED CMU	NONE	11' - 4"
GC01	CORRIDOR	661 SF	TERRAZO	VINYL	PAINTED CMU W/ SCUFFMASTER WAINSCOT	2' X 2' ACOUSTIC TILE	9' - 0"
GC02	CORRIDOR	533 SF	TERRAZO	VINYL	PAINTED CMU W/ SCUFFMASTER WAINSCOT	2' X 2' ACOUSTIC TILE	9' - 0"
GC03	CHECK-IN	146 SF	TERRAZO	VINYL	PAINTED CMU W/ SCUFFMASTER WAINSCOT	2' X 2' ACOUSTIC TILE	9' - 0"

45091 SF

SCHEDULE NOTES:

1. GYPSUM CEILING PANINT COLOR SHALL BE P-7 U.N.O.
2. COORDINATE COLOR SELECTION WITH SHEET ID-7.0

Key Plan



Issue

No.	Date
SD SET	3.16.12
DD SET	5.04.12
PERMIT REVIEW SET	7.30.12
FTG REVIEW SET	3.19.13
PERMIT REVIEW RESUB	3.29.13
CMR SUBMISSION	4.15.13
FTG SUBMISSION	5.24.13
FOUND COORD PKG	6.21.13
ISSUED FOR CONST	7.12.13

Revisions

No.	Date
-----	------

Floor Finish Location Plan

Date
APRIL 15, 2013
Principal In Charge
S.E.
Design Architect
S.A.
Project Architect
M.V., L.D., F.D.
Approved
R.W.
Drawn
K.T., S.F., D.R., A.C.
Job No.
09224.01

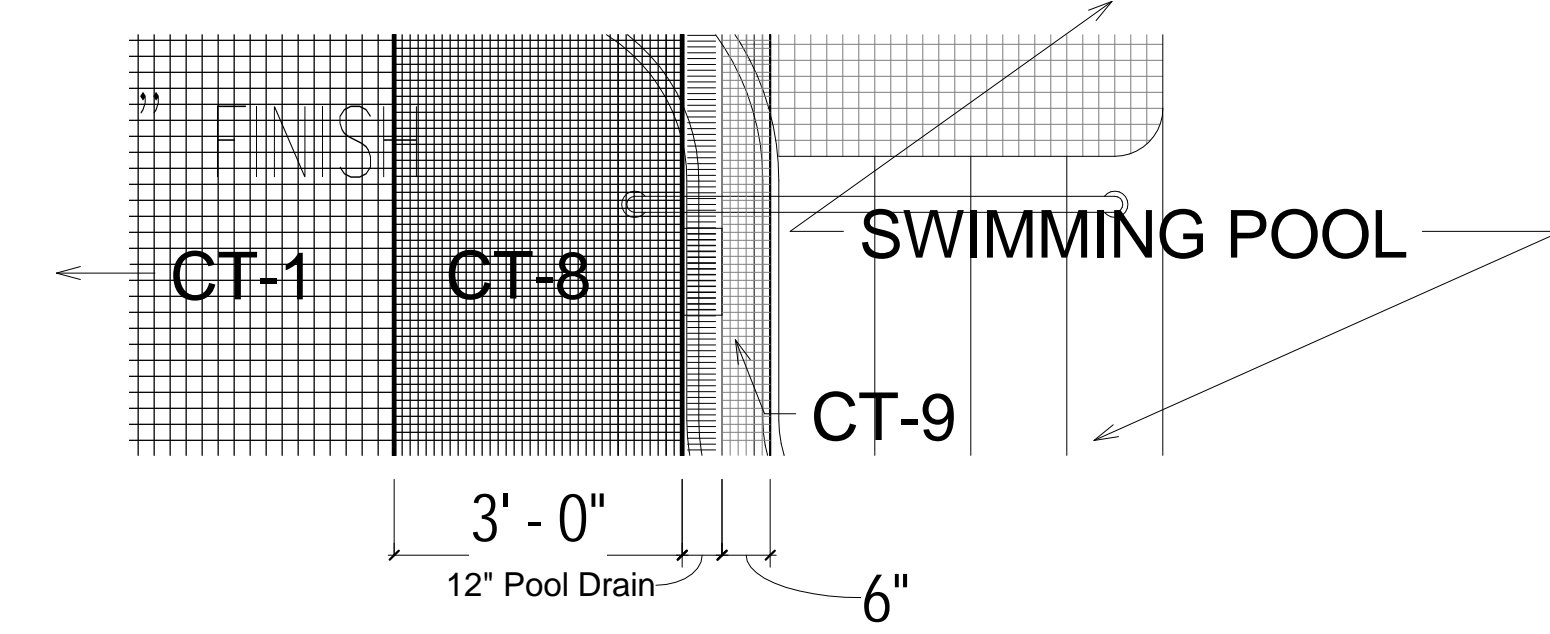
Scale
As indicated

Drawing No.
ID-2.0

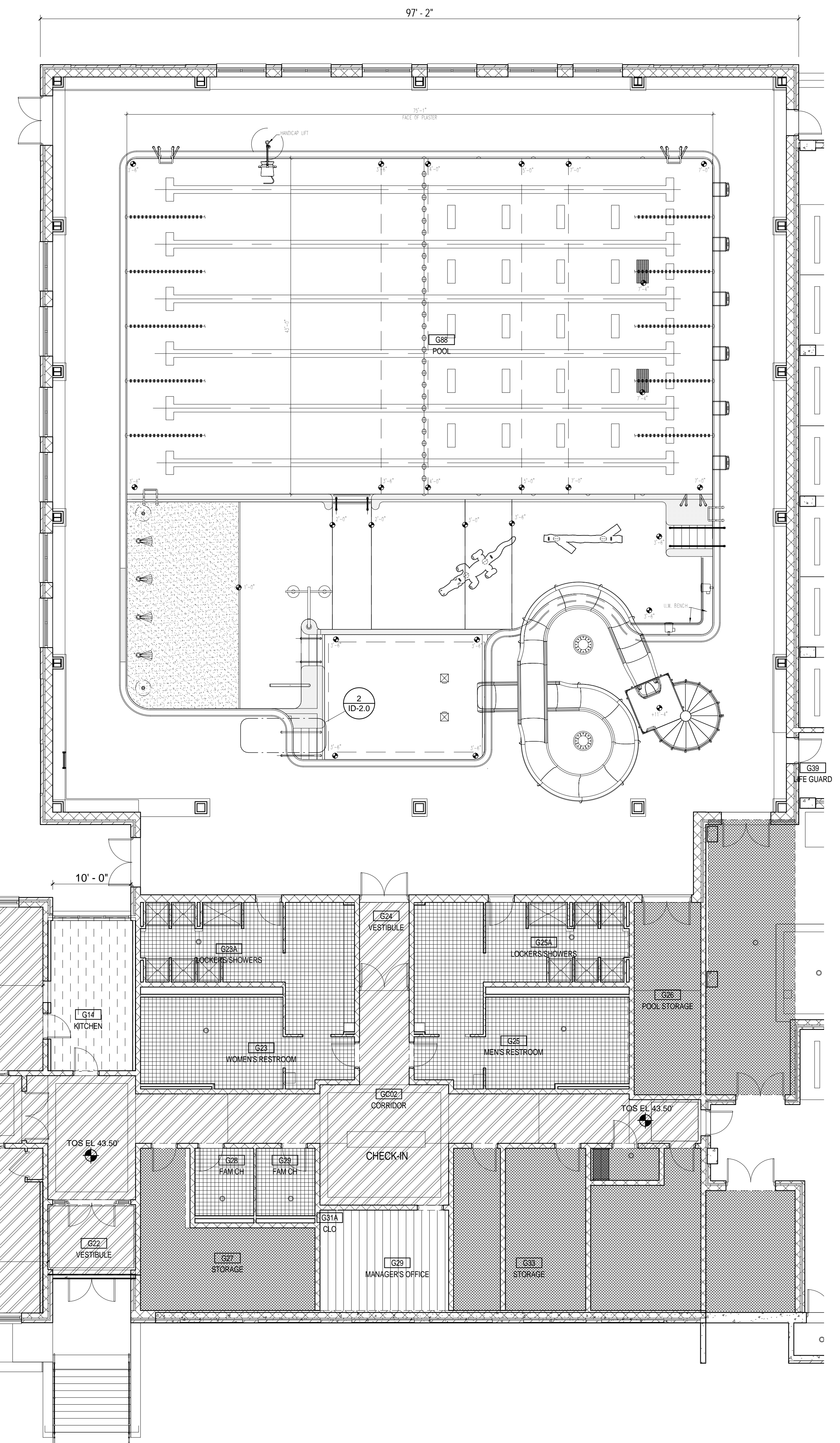
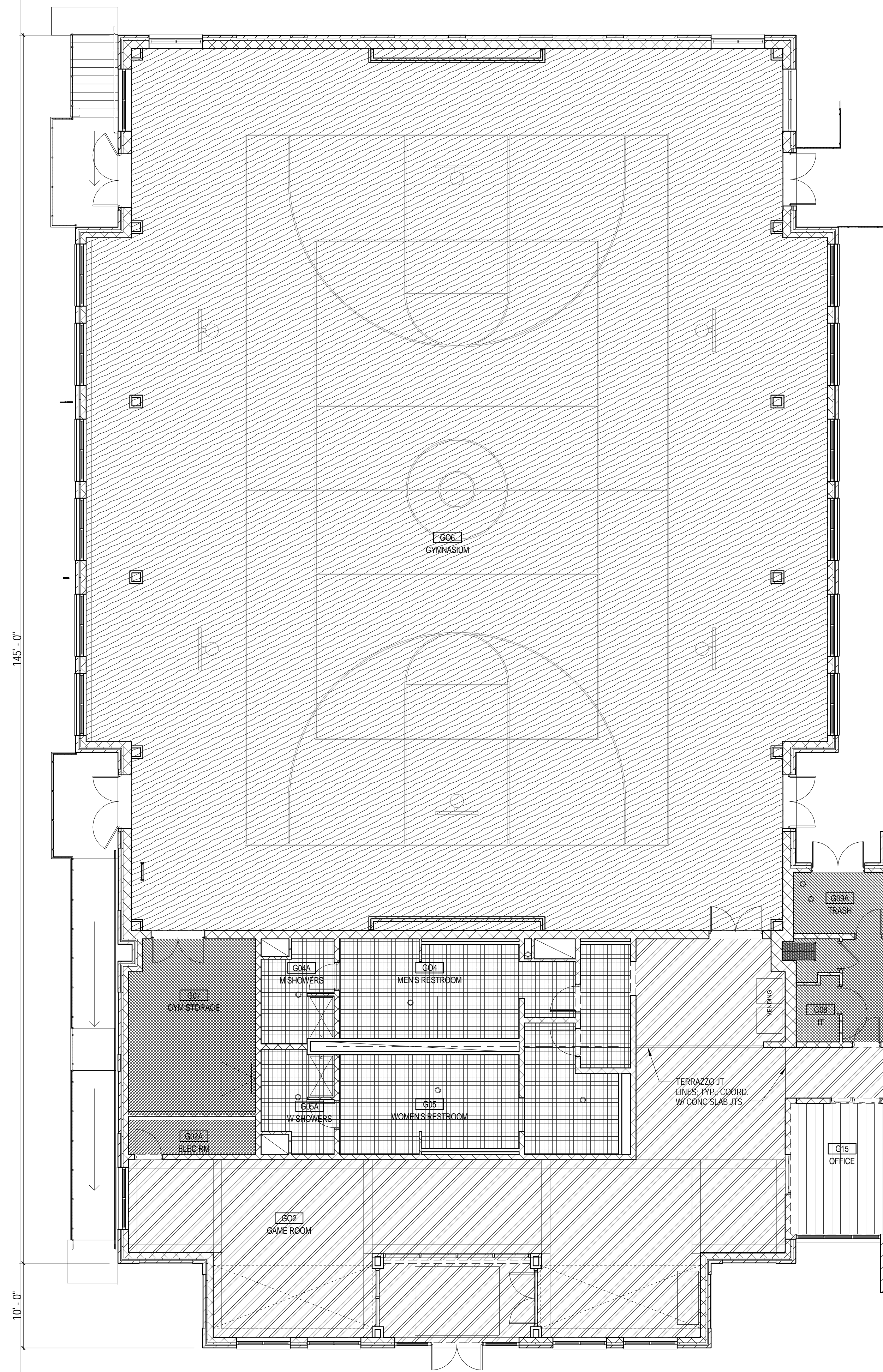
PLAN NOTES:

①	ENTRANCE WALK-OFF MATT SHALL HAVE A RUBBER EDGE BINDING ALONG ALL EXPOSED EDGES	FLOOR FINISH TRANSITION	CARPET TILE [C-1]
		TERRAZO [SC-1]	PORCELAIN TILE [CT-2]
		EPOXY COATING [SC-4]	RUBBER FLOORING [RF-1]
		SEALED CONCRETE [SC-5]	GYMNASIUM FLOORING WOOD [WF-1]
		MATWORKS MAT [WM-1]	

LEGEND



CERAMIC TILE @ POOL EDGE



1 FLOOR FINISH LOCATION PLAN
1/8" = 1'-0"

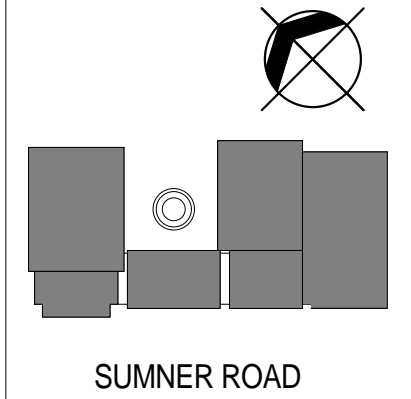
Issued for Construction Submission *7.12.13

BARRY FARM RECREATION CENTER

TORTI GALLAS URBAN, INC.

1230 Sumner Road, SE
Washington, DC 20020
Architect:
Torti Gallas Urban, Inc.
1316 9th Street, NW
Washington, DC 20001
202.232.3132
www.tortigallas.com
Developer:
Department of General Services
RFK Stadium, Lot 4, Gate F
Washington DC 20003
202.698.7700
Department of Park and Recreation
3149 16th Street, NW
Washington, DC 20010
202.673.7647
Structural Engineer:
SK&A Structural Engineers,
1155 Connecticut Avenue
Suite 800
Washington DC 20036
202.659.2520
MEP Engineer:
Bhargava International, Inc.
7325 Georgia Avenue NW
Washington DC 20012
202.386.6109
Civil Engineer:
Wiles Mensch Corporation
1424 K Street, Suite 302
Washington, DC 20005
202.638.4040
Landscape Architect:
Wiles Mensch Corporation
1424 K Street, Suite 302
Washington, DC 20005
202.638.4040
Pool Design:
SEI Architects
1355 Piccard Dr, Suite 200
Rockville, MD 20850
301.770.0177
Interior Design:
TGU

Key Plan



Issue

No.	Date
SD SET	3.16.12
DD SET	5.04.12
PERMIT REVIEW SET	7.30.12
FTG REVIEW SET	3.19.13
PERMIT REVIEW RESUB	3.29.13
CMR SUBMISSION	4.15.13
FTG SUBMISSION	5.24.13
FOUND COORD PKG	6.21.13
ISSUED FOR CONST	7.12.13

Revisions

No.	Date
-----	------

Material Schedule

Date
APRIL 15, 2013
Principal In Charge
S.E.
Design Architect
S.A.
Project Architect
M.V., L.D., F.D.
Approved
R.W.
Drawn
K.T., S.F., D.R., A.C.
Job No.
09224.01
Scale

Drawing No.
ID-7.0

FINISHES SCHEDULE

MARK	ITEM	MANUFACTURER	SPECIFICATION	REMARK	SUPPLY & INSTALATION
ACT-1	CEILING TILE	AMSTRONG	OPTIMA VECTOR 4'X4'X7/8" COLOR WHITE	LOBBY	BY GC
ACT-2	CEILING TILE	AMSTRONG	DUNE 24"X48"X5/8" COLOR WHITE	GENERAL	BY GC
GR-1	CEILING GRID	AMSTRONG	PRELUDE ML 15X16" EXPOSE TEE SYSTEM	GENERAL	BY GC
GR-2	CEILING GRID	AMSTRONG	SUPRAFINE ML 9/16 EXPOSE TEE SYSTEM	LOBBY	
B-1	MCU BLOCK/WALL BASE	TRENWYTH	ASTRA-GLAZE-SW+ COLOR EARL GREY	GAME ROOM/LOBBY WALL BASE	BY GC
SC-1	TERRAZO FLOOR TILE	ROMAN MOSAIC	IDENTIFICATION MD0175-TZ6 (BLEND) COLOR RANGE: SOFT GREY	G01/G02/G03/GC01/G11/G12 G16/G17/G21/G22/GC02/G24/CHECK-IN	BY GC
WF-1	WOOD FLOORING	CONNORS	SMARTSTEP FIXED RESILIENT SINGULAR PINNED.	GYMNASIUM	BY GC
WF-2	CARPET TILE	SHAW CONTRACT	MERGER TILE BLUE LIMIT 67516	G15/G31	
WM-1	WALKOFF MAT	MATWORKS	AMBASSADOR ULTRATYTE TILE WITH TACFAST FOR SIZE SEE DWGS COLOR: TO MATCH ADJACENT FLOOR. BINDING BLACK RUBBER EDGING #3200106-041	ENTRANCES	BY GC
RF-1	RUBBER FLOORING	JOHNSONITE	REPLAY COMMOTION COLLECTION #523 SKY 24"X24"X3/8" SQUARE TILES COMT-XXX	EXERCISE ROOM	BY GC
MCT-1	MARMOLEUM	MONDO USA	HARMONI LISSE HAS 20 ORANGE 3MM	AT COMPUTER ROOM FLOOR	BY GC
EP-1	EPOXY COATING	EVERLAST	SAFTY YELLOW	AT KITCHEN FLOOR	BY GC
CT-1	PORCELAIN TILE	DALTILE	KEYSTONES DESERT GRAY D014 (1) 15"16"X15"16" FLOOR TILE	AT RESTROOMS/SHOWERS LOCKERS/FAM CH/SWIMMING POOL	BY GC
CT-2	PORCELAIN TILE	DALTILE	SEMIGLOSS ARTIC WHITE #0190 6"X6" WALL TILE	AT RESTROOMS/SHOWERS/LOCKERS/FAM CH	BY GC
CT-3	PORCELAIN TILE	DALTILE	SEMIGLOSS COLOR TRENDS TOTALLY TANGERINE#Q151 6"X6" WALL TILE	AT RESTROOMS/SHOWERS/LOCKERS/FAM CH SEE ELEVATIONS	BY GC
CT-4	PORCELAIN TILE	DALTILE	SEMIGLOSS COLOR TRENDS CITRIC BLOOM #Q140 6"X6" WALL TILE	AT RESTROOMS/SHOWERS/LOCKERS SEE ELEVATIONS	BY GC
CT-5	PORCELAIN TILE	DALTILE	SEMIGLOSS COLOR TRENDS ELECTRIC BLUE #Q194 6"X6" WALL TILE	AT RESTROOMS/SHOWERS/LOCKERS/FAM CH SEE ELEVATIONS	BY GC
CT-6	PORCELAIN TILE	DALTILE	SEMIGLOSS MUSTARD (4) QO12 3"X6"	AT SWIMMING POOL WATER EDGE AND STEPS	BY GC
CT-7	MOSAIC GRADIENT TILE	MOSAIC TILE SUPPLIES	MTG BLUMNBK(BLUE EDGES TOP AND BOTTOM)	AT SWIMMING POOL WALL BORDER	BY GC
CT-8	MOSAIC GRADIENT TILE	MOSAIC TILE SUPPLIES	MTG BLUMNBK(BLUE TOP WHITE BOTTOM)	AT SWIMMING POOL EDGE BORDER	BY GC
CT-9	MOSAIC TILE	MOSAIC TILE SUPPLIES	TBC /	AT SWIMMING POOL EDGE BORDER,(WATER SIDE)	BY GC
CT-10	DEPTH MARKER TILE	DALTILE	TBC	AT SWIMMING POOL EDGE BORDER	BY GC
CT-11	PORCELAIN TILE/BASE	DALTILE	2X2 MB-5B THIN SET BED	ALL AREAS WITH CT-1 FLOOR TILES	BY GC
GT-1	GROUT	HYDROMENT	HERRON BLUE H171	ALL WALL TILES INCLUDING GRADIENT MOSAIC	BY GC
GT-2	GROUT	HYDROMENT	DELORAN GREY H160	ALL KEYSTONE DESERT GRAY TILES	BY GC
P-1	PAINT	SHERWIN- WILLIAMS	INVIGORATE SW6886 SATIN	G02/G03/G20 SEE ELEVATIONS	BY GC
P-2	PAINT	SHERWIN- WILLIAMS	FUNKY YELLOW SW 6913 SATIN	G02/G03/G16/ CHECK-IN SEE ELEVATIONS	BY GC
P-3	PAINT	SHERWIN- WILLIAMS	FUSION SW6919 SATIN	GC01 SEE ELEVATIONS	BY GC
P-4	PAINT	SHERWIN- WILLIAMS	GOLDFINCH SW6905 SATIN	G12/G21 GYM AND POOL DUCTS SEE ELEVATIONS	BY GC
P-5	PAINT	SHERWIN- WILLIAMS	HYPER BLUE SW6965 SATIN	G10/G31SEE ELEVATIONS	BY GC
P-6	PAINT	SHERWIN- WILLIAMS	DYNAMO SW6841 SATIN	G17/G22 SEE ELEVATIONS	BY GC
P-7	PAINT	SHERWIN- WILLIAMS	ARCADE WHITE SW7100 SATIN	G03/G10/G11/G12/G14/G16/G17/G20/G21/G31/ CLGS	BY GC
P-8	PAINT	SHERWIN- WILLIAMS	LEISURE BLUE SW6515	GYMNASIUM SEE ELEVATIONS	BY GC
P-9	PAINT	SHERWIN- WILLIAMS	DOVERTAIL SW7018	PAINT GRADE DOORS AND FRAMES	BY GC
P-10	SPECIALTY PAINT	SCUFFMASTER	COLOR G 8126336	CORRIDORS WAISTCOAT TRIM	BY GC
SS-1	SOLID SURFACE	ICESTONE	COLOR DENIM MOSS SIZE 1 1/4" THICK SEALER KINLOCH USA -NAN 01000	TOP COUNTER AT FRONT DESK	BY GC
PL-1	PLASTIC LAMINATE	FORMICA	STORM 912-58	FRONT DESK	BY GC
PL-2	PLASTIC LAMINATE	FORMICA	MISSION WHITE 933-58	CABINET FRONTS AT KITCHEN,SENIORS&ARTS	BY GC
PL-3	PLASTIC LAMINATE	FORMICA	COLORCORE SPECTRUM YELLOW 7940C-FV	COUNTER AT KITCHEN,SENIORS & ARTS	BY GC
PL-4	PLASTIC LAMINATE	FORMICA	DECOMETAL BRUSHED ALUMINUM 2022	BASE BOARD FRONT DESK,KITCHEN, SENIORS & ARTS	BY GC
BL-1	GYM BLEACHERS	HUSSAY	MAXAM TELESCOPIC GYM BLEACHERS/ COLOR YELLOW	GYMNASIUM	BY GC
WP-1	WALL PADDING	PROWALL PADS	COLOR SKY BLUE OR SIMILAR TO MATCH P-8	GYMNASIUM	BY GC

BARRY FARM RECREATION CENTER

NOTES:

- * CELINGS AND STRUCTURAL TRUSSES AT GYNMASIUM ALL PAINTED IN WHITE
- ***PAINTED CEILINGS SHALL BE COLOR P-7 U.O.N.**
- *CT-5 TO BE EXTENTED ON THE G05 EAST WALL
- *MOBILE ARTIST CAN BE CONTACTED ON 202 402 5152 EMAIL ADDRESS paulsikora@earthlink.net>

Issued for Construction Submission *7.12.13