
The Care of Terrazzo



www.ntma.com
(800) 323-9736

- TERRAZZO FLOORS
- OWNER'S GUIDE FOR THE SUGGESTED MAINTENANCE OF TERRAZZO
- CUSTODIAN'S GUIDE TO THE PROPER MAINTENANCE OF TERRAZZO
- DO'S - FOR TERRAZZO FLOOR CARE

Terrazzo floors have *ease of maintenance*, but this does not mean that **NO CARE IS REQUIRED**. Once you understand the care requirements in the early stages of a new terrazzo floor, you lessen possible problems, and recognize the economy of care and the aesthetic values of this product. **NTMA terrazzo flooring specifications highly recommends a sealer applied to this surface immediately following the final polishing.**

Sealers help inhibit the penetration of spilled materials upon initial contact with the terrazzo floor. Spills must be cleaned up immediately in order to prevent stains caused by repeated or long term exposure. Even standing water can eventually dissolve some sealers.

As most sealers are low solids liquid material, they do not normally produce a high gloss sheen appearance to the floor surface. When a building is eventually occupied, the terrazzo temporary sealer can be stripped and the surface may be retreated as implemented by ownership. The eventual degree of gloss is determined by the particular products selected and the recommended application process.

TAKE THE NECESSARY TIME TO LEARN WHICH TERRAZZO SYSTEM YOU ARE MAINTAINING

There are three types of binders used to anchor marble chips or other aggregate in your terrazzo floor. Originally, and still used, is a Portland cement product; next a polyacrylate modified cement. The most common matrix today is epoxy resin.

All Terrazzo Systems contain marble or other types of aggregates materials that have surface exposure. Marble aggregates have a low porosity of absorption. Others aggregate types may have little or no porosity.

Portland Cement Systems: The portion of this floor system that most benefits from primary protection is the Portland cement binder. Sealers will also assist protecting the marble chips or other aggregates

Epoxy Resin Systems: The binder for this terrazzo system is fundamentally non-porous. Sealers assist protecting the aggregates and normally enhance aesthetics.

Although each system has the role of anchoring the aggregate into the topping, maintenance procedures are essentially common to all terrazzo installations.

OWNER'S GUIDE FOR THE MAINTENANCE OF TERRAZZO

MAINTENANCE PRECAUTIONS: Harsh cleaners and sealers can damage terrazzo. Only materials that are neutral pH should be used when scrubbing or mopping floors. Sealers should achieve a slip resistance coefficient of friction rating applicable to code. Water based sealers are most commonly recommended and utilized today. Mop on, in one or more coats, in accordance with the instructions of the sealer manufacturer. This can also be followed by a water based finish (dressing) for daily or weekly buffing if a high sheen is desired.

CLEANING PROCEDURES: Neutral cleaners are designed to react only in solution with clean water, mixed in accordance to the manufacturer instructions, and allowed to remain on the floor surface for several minutes. This provides the necessary time for the grime-dissolving action to take place. Then rinse the dirt-laden solution from the surface by squeegee, vacuum or mopping. Rinse with ample clean water. It is important to keep the floor wet during this entire cleaning process so the dirt and cleaning residue does not dry on the surface.

FAQ "How often must we sweep or scrub this floor?" is answered by the amount of traffic that moves across the floor daily. Daily dust mopping is a requirement in most public buildings. Daily dust mopping removes both the dust and the grit tracked into the building.



CUSTODIAN'S GUIDE TO THE PROPER MAINTENANCE OF TERRAZZO

FOLLOWING THESE MINIMUM MAINTENANCE SUGGESTIONS TO KEEP YOUR TERRAZZO FLOOR CLEAN AND LONG-LASTING:

DAILY: DUST MOP Hand work stubborn stains and scuff marks with neutral cleaner diluted in warm water.

WEEKLY: DAMP MOP LIGHTLY SOILED FLOORS WITH NEUTRAL CLEANER Heavily soiled floors should be scrubbed with a mechanical buffing machine and neutral cleaner. Mop up residue with clean water before it dries. Allow to dry and buff with a dry brush.

NOTE: ALLOW YOUR NEUTRAL CLEANER, ONCE APPLIED TO THE TERRAZZO SURFACE, TIME TO REACT. IT IS DESIGNED TO LOOSEN FOREIGN MATTER. SEVERAL MINUTES SHOULD BE ADEQUATE, BUT DO NOT ALLOW SOLUTION TO DRY ON THE SURFACE.

AS REQUIRED: Strip all old sealer and any finish coats. Reseal clean floor.

CAUTION: Before deviation from the instructions, contact your local Terrazzo Contractor for advice. ALWAYS KEEP RINSE WATER, MOPS & PAILS CLEAN!

DO'S FOR MAINTENANCE OF TERRAZZO FLOORING

DO dust mop your floors daily, this not only picks up the dust, but also the grit tracked into your building. The grit acts as an abrasive on your hard surface floor.

DO use maintenance products designed specifically for terrazzo.

DO where a new terrazzo floor has been installed, scrub your floors approximately once or twice a week for the initial two to three months, as the new construction dust will still be in the air and will eventually be deposited on your floor.

DO after this period, once per week, depending on the amount of foot traffic, keep your floor clean in appearance. Always rinse your floors well to prevent a build-up of cleaner residue. Use a dry cotton or microfiber cloth to dry the terrazzo floor surface.

DO allow your neutral cleaner, once applied to the terrazzo surface, time to react as designed to loosen foreign matter. Several minutes should be adequate, but DO NOT allow the solution to dry on surface.

DO seal your floors with a water-based sealer in accordance to the sealer manufacturer's instructions.

PAINT

Operation & Maintenance

MIET

PAINTERS, INC.

Product Maintenance Information Manual For:
Barry Farms Recreation Center

Product Maintenance Information Manual For: Barry Farms Recreation Center

A. Source Information

1. Paint Materials

Paint Vendor: Sherwin Williams

Wall/Accent Wall Primer (Passages and Offices): Blockfiller

Wall/Accent Wall Finish Paint (Passages and Offices): Latex Eggshell

Decking/Unexposed Ceiling Primer (Gym/Passages/Offices): Dryfall

Lower Structural Steel Finish (Gym and Pool Area): Acrylic DTM

Hollow Metal Doors/Frames Primer: Acrylic Primer

Hollow Metal Doors/Frames Finish: Semi-Gloss Acrylic DTM

Paint Vendor: Tnemec

Pool Area CMU (Primer): Waterborne Acrylic

Pool Area CMU (Intermediate Coat): Water-Based Epoxy

Pool Area CMU (Finish): Waterborne Polyurethane

Pool Area Structural Steel (Primer): Water-Based Epoxy

Pool Area Structural Steel (Finish): Acrylic Polyurethane

Paint Vendor: Wolf Gordon

Admin./Game Room Entry Area (Below Wainscoting) Finish:
Polyurethane

B. Product Information & Data Sheets

1. Sherwin Williams Paints Product Names: (See attached sheets for respective material composition and material safety data sheets).

- PrepRite Interior/Exterior Latex Block Filler B25W25
- ProMar 200 Zero VOC Interior Latex Eg-Shell
- Pro-Industrial Waterborne Acrylic Dryfall

Product Maintenance Information Manual For: Barry Farms Recreation Center

- Pro-Cryl Universal Acrylic Primer
- DTM Acrylic Coating Semi-Gloss

2. Tnemec Paints Product Names: (See attached sheets for respective material composition and material safety data sheets).

- Envirofill Series 130 – Waterborne Cementitious Acrylic
- Typoxy Series 27WB – Inorganic Hybrid Water-Based Epoxy
- Enviro-Glaze Series 297 – Ceramic-Modified Waterborne Aliphatic Polyurethane
- Endura-Shield Series 1081 – Waterborne Acrylic Polyurethane

2. Tnemec Paints Product Names: (See attached sheets for respective material composition and material safety data sheets).

- Scuffmaster Scrubtough

Reordering Information:

1. Sherwin Williams Co.:

4349 Duke St.
Alexandria, VA 22304-2597
Tel: (703) 751-7535

2. Tnemec Co. Inc.:

6800 Corporate Dr.
Kansas City, MO 64120-1372
Tel: (816) 483-3400

3. Wolf Gordon:

3300 47th Ave.
Long Island, NY 11101-24
Tel: (718) 391-4800

Product Maintenance Information Manual For: Barry Farms Recreation Center

C. Maintenance Procedure

1. Inspection Procedure: N/A
2. Types of cleaning agents to be used:
 - a. Methods of Cleaning: See Attached
3. List of Cleaning agents and methods detrimental to the products:
See Attached
4. Schedule for Routine cleaning and maintenance: See Attached
5. Repair Instructions: Lightly scuff, sand, spot, prime and apply two coats to a naturally occurring break point.

D. Warranties

1. Procedures to follow and requires notifications for warranty claims:
See Attached Warranty Letter
2. Commencement Date: 3/23/2015
3. Expiration Date: 3/22/2016



SHERWIN-WILLIAMS.

Care and Cleaning of Interior and Exterior Coatings

Background:

Establish procedures to maintain and clean interior and exterior painted substrates. To assure maximum Washability and Durability, wait at least 30 days before washing the dry paint film. Exterior coatings typically are very soft and flexible to allow for expansion and contraction of the coating during changes of temperature. Any hard scrubbing of standard exterior coatings is likely to damage the film. To clean and maintain the interior and exterior surfaces, we recommend these procedures.

Concentrated Cleaners, Liquid or Dry:

- Read all the package directions before using. It is always recommended to test any cleaner on a small, inconspicuous area prior to use.
- Mix or dilute the cleaner per package instructions. Solution strength may be adjusted depending on amount and type of soil.
- Remove any heavy debris and contaminants.
- Using a sponge or cloth, wash surface dirt and marks.
- Do not allow the cleaner to dry on the surface.
- Always clean from the bottom of a wall to the top.
- Rinse the surface thoroughly.
- Repeat if necessary.

Premixed Spray Cleaners:

- Read all the package directions before using. It is always recommended to test any cleaner on a small, inconspicuous area prior to use.
- Turn spray nozzle to desired spray pattern. (Open with nozzle facing away from you.)
- Remove any heavy debris and contaminants.
- Apply the cleaner to the dirt and marks; apply just enough to wet the area.
- Using a damp sponge or cloth, wipe to remove the surface dirt and marks and any excess cleaner. For difficult stains, some scrubbing may be necessary.
- Do not allow the cleaner to dry on the surface.
- If recommended on the cleaner package, rinse the surface thoroughly.
- Repeat if necessary.
- Return spray nozzle to the closed position.

Cautions:

- Thoroughly read and understand all the label cautions prior to using any cleaner.
- Be sure that the cleaner is appropriate for the dirt/contamination.
- Do not mix together any cleaning compounds containing bleach and ammonia.
- Abrasive cleaners may damage a paint film, use ever carefully.

WARNING!

- Removal of old paint by sanding, scraping or other means may generate dust or fumes that contain lead. Exposure to lead dust or fumes may cause brain damage or other adverse health effects, especially in children or pregnant women. Controlling exposure to lead or other hazardous substances requires the use of proper protective equipment, such as a properly fitted respirator (NIOSH approved) and proper containment and cleanup. For more information, call the National Lead Information Center at 1-800-4245-LEAD (in US) or contact your local health authority.

Wall Maintenance

Periodic washing with liquid, general purpose, non-abrasive cleanser should keep most surfaces looking like new. For more stubborn stains, a mild abrasive cleanser can be used. When cleaning deep dark colors caution must be used. The grit in abrasive liquid or powdered cleansers has a tendency to de-gloss deep colors. This may leave a dull spot when compared to adjacent areas. Avoid using cleansers which contain chlorine. Chlorine is a bleach and may discolor the surface.

General Washing Tips

- Remove dust from wall surface.
- Use a sponge versus a cloth to wash and rinse walls. A cloth can shine a flat surface or dull a lustrous one.
- Change wash and rinse solutions frequently.
- Wash from the bottom of the wall upward.
- To avoid streaking when cleaning soiled areas, start with the adjacent clean area and clean into the soiled area

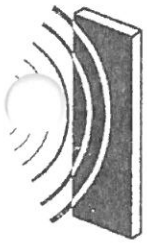
For Tougher Stains

- Follow general washing tips listed above. For tougher stains use a natural citrus formula cleaner containing no petroleum solvents.
- Rub the natural citrus cleaner into the stained area until the stained area is dissolved and removed
- Wipe dry and rinse with water.

If maintained properly your Scuffmaster finish will provide a beautifully durable surface for many years.

TOILET ACCESSORY & OPERABLE WALL

Operation & Maintenance



KWIK-WALL

MOVEABLE WALL SYSTEMS

"Curtiion"

OPERATIONS AND MAINTENANCE MANUAL

For Model 2030 or 3030
HINGED PAIRS
Operable Wall Systems

Contents

SECTION ONE—Standard Features

General Information	1-2
Limited Warranty	1-3
Extending the Wall System	1-4
Retracting the Wall System	1-5
Track	1-5

SECTION TWO—Non-Standard Options

Initial Closure	1-6
Final Closure	1-6
Bottom Seals	1-8
Other Options	1-9
General Maintenance and Cleaning	1-11

Effective January 1, 2001

GENERAL INFORMATION

Thank you for choosing KWIK-WALL for your space division application. KWIK-WALL Operable Wall Systems have been designed and manufactured to provide many years of smooth operation, trouble free service, and maximum visual appeal. The Operation and Maintenance Instructions provided in this manual will assist you with all of the regular and necessary maintenance requirements of your Operable Wall System. For added convenience, consult with your professional KWIK-WALL distributor for details of a comprehensive Preventative Maintenance Program for all of your Operable Wall Systems.

Keep this manual for your reference when performing routine maintenance. It contains valuable information regarding KWIK-WALL's Limited Warranty as well as the job number (K-number) and the name of the installing distributor.

Please contact your local KWIK-WALL distributor for repairs, replacement, or for dismantling or relocating Operable Wall Panels. Should it be necessary to contact KWIK-WALL Company directly, please have the job number (K-Number) handy at the time of your inquiry. KWIK-WALL can be contacted at:

KWIK-WALL Company
Attention: Customer Service Department
1010 East Edwards Street
Springfield, Illinois 62703

Phone: 217-522-5553
Fax: 217-522-1170
Website: www.kwik-wall.com
E-Mail: kwinfo@kwik-wall.com

Project Name: _____

Sold By: _____

Ship Date: _____

Job Number: _____
(K-Number) _____

INTRODUCTION

The following documentation has been supplied for Hinged Pair Operable Wall Systems to help you efficiently use and maintain your new wall. Hinged Pair is designated as evenly matched pairs (groups of two panels) unless otherwise noted on the shop drawing.

**KWIK-WALL OPERABLE WALL SYSTEM LIMITED WARRANTY**

KWIK-WALL Company warrants each operable wall and its component parts to be free from defects in material and workmanship for a period of two (2) years from date of delivery to the original purchaser, when installed by an authorized KWIK-WALL distributor. KWIK-WALL Company reserves the right to have authorized personnel inspect any part alleged to be defective and to refuse any returned material unless the return was previously authorized by KWIK-WALL.

This warranty does not apply to any damage or deterioration caused by abuse or failure to provide reasonable and necessary maintenance. KWIK-WALL's liability hereunder is limited to the replacement of any panel or component part found to be defective. Labor charges are the responsibility of the customer.

KWIK-WALL SHALL NOT BE LIABLE FOR ANY CONSEQUENTIAL OR INCIDENTAL DAMAGES. ALL OTHER WARRANTIES EXPRESSED OR IMPLIED INCLUDING ANY IMPLIED WARRANTY OF MERCHANTABILITY ARE HEREBY EXPRESSLY EXCLUDED.

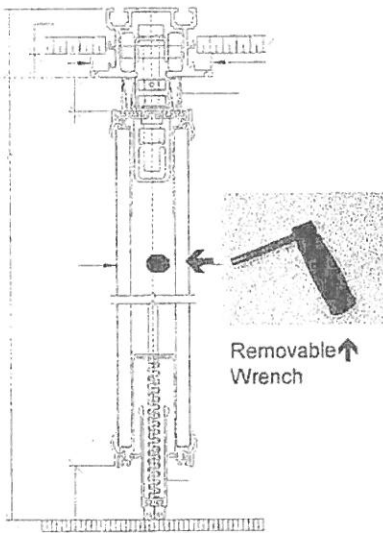
Some states do not allow the exclusion or limitation of consequential or incidental damages, so the above limitation or exclusion may not apply to you.

This warranty gives you specific legal rights, and you may also have other rights which vary from state to state.

SECTION ONE—Standard Features**OPERATION: Extending the Wall System**

1. Grasp the edges of the first Hinged Pair panel group on both sides while standing directly under the track centerline. The first panel exiting the stack will have Bulb Seals mounted on the lead edge.
2. Walking backwards away from the stack end, pull the panel pair slowly and evenly from both sides until the panels can be unfolded. Remember to keep fingers out of the hinged joints when straightening each panel group to avoid pinching.
3. Stand behind the flattened panel pair and carefully push the panel pair from the stack end until the lead panel has made sufficient contact with the permanent wall. Once in place set the bottom seal to stabilize the panel (see instructions below).

4. Each panel or panel pair, except the last, is equipped with an edge-activated bottom seal that is operated using a removable wrench supplied by the manufacturer. Insert the removable wrench (see left) into the opening located in the edge of the panel. Rotate the wrench to EXTEND the Bottom seal. Continue rotating wrench until mechanism contacts a "stop".



5. Repeat the same routine until all the panel pairs have been set up.

Note: DO NOT ATTEMPT TO MOVE THE PANELS WITH THE OPERABLE BOTTOM SEALS TOUCHING THE FLOOR.

FINAL CLOSURE – EXPANDER PANEL

1. The final closure panel is the last panel to exit the stack area. This panel utilizes an expander mechanism that mechanically telescopes outward to create a positive contact seal with a rigid wall or jamb.
2. To extend the expander, insert the removable wrench (as shown above) into an escutcheon plate located on the face of the panel and rotate to set the Expander panel in place.
3. The bottom seals on the Final Closure panel(s) contain Adjustable Bottom Seals. These seals contain screws in each edge of the panel. Loosen the screws to adjust the seals so that they are in sufficient contact with the floor surface. Once adjusted, then tighten the screws.

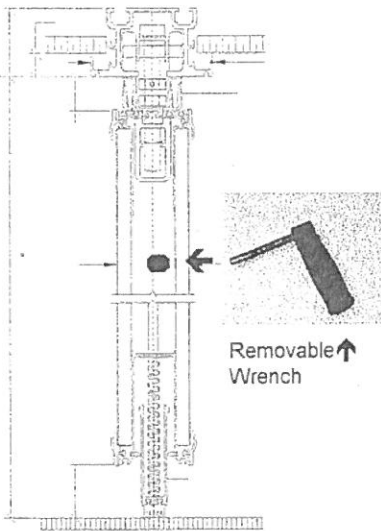
Note: Always adjust the seal as close to the extended panel position as possible.

OPERATION: Retracting the Wall System

1. To retract the wall system, insert the removable wrench into an escutcheon plate located on the face of the trail panel and rotate to release the Expander mechanism.
2. Gently pull the panels until they separate from the adjacent panel. Slowly push them back to the stack area. Then fold the panels in the retracted position and push into the stack.
3. Disengage the Operable Bottom Seal from the next set of panels by inserting the removable wrench into the opening located in the edge of the panel. Rotate the wrench to RETRACT the Bottom seal. Continue rotating wrench until mechanism is fully retracted into the panel.

4. Gently pull the panels until they separate from the adjacent panel. Grasp the edge of the Hinged Pair panel group on both faces and walk toward the stack end. When they reach the storage location, fold the two panels together and slowly push them back into the stack area.
5. Repeat the same routine until all the panels have been removed from the set up location.

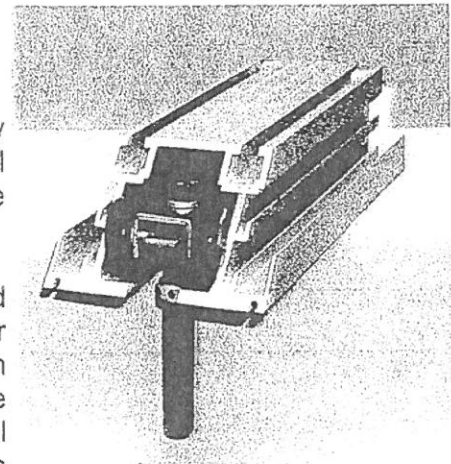
Remember: DO NOT ATTEMPT TO MOVE PANELS WITH THE OPERABLE BOTTOM SEALS TOUCHING THE FLOOR.



HINGED PAIR ALUMINUM TRACK

The Track System is extruded from aluminum and should require only annual cleaning of the inside flanges. Every six months check the overall track condition for smoothness and proper alignment. Then lubricate the inside bottom flange with "Sil-Glyde".

KWIK-WALL offers 425 Hinged Pair Aluminum track as our standard feature capable of supporting up to 425 lbs. of total live load weight per panel. For all panels that weigh over 425 lbs., 850 Hinged Pair Aluminum track will be used and is capable of supporting up to 850 lbs. of total live load weight per panel. As an option, KWIK-WALL also offers 850 Steel Track constructed of durable powder-coated, off-white finish and is capable of supporting up to 850 lbs. of total live load weight per panel

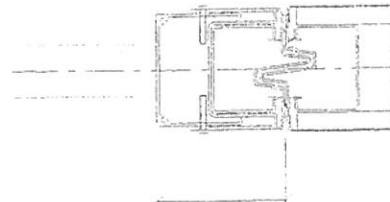


SECTION TWO—Non Standard Options

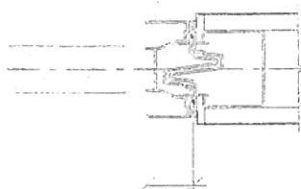
Initial Closure Options

ADJUSTABLE STARTER JAMB

The Adjustable Starter Jamb consists of two (2) aluminum extrusions which are permanently mounted to a structural wall surface and are field-adjustable to compensate for out-of-plumb conditions of the fixed wall. The lead panel edge is equipped with a tongue-and-groove type vertical rail that will interlock with the jamb.



FIXED STARTER JAMB

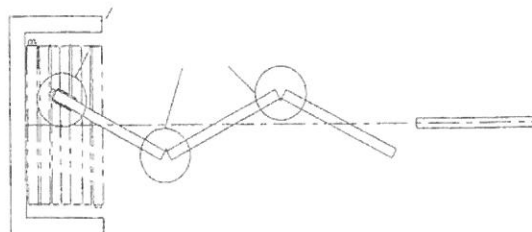


The Fixed Starter Jamb consists of an aluminum extrusion which is permanently mounted to a structural wall surface. The lead panel edge is equipped with a tongue-and-groove type vertical rail that will interlock with the jamb.

Final Closure Options

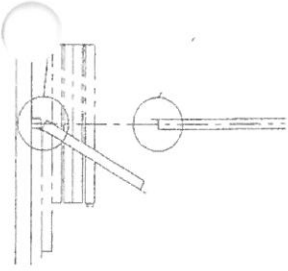
THREE-PANEL-TRAIN CLOSURE

The Three-Panel-Train consists of three (3) panels hinged together to form a train. The last panel in the train incorporates an expander mechanism on the vertical rail, which telescopes outward to create a positive contact seal with a rigid wall or jamb. This mechanism is activated from the face of the panel with a removable wrench. The three panels in the train are equipped with adjustable bottom seals.



Once the panels are in place, insert the removable wrench into the escutcheon plate in the face of the panel and rotate to extend the expander mechanism.

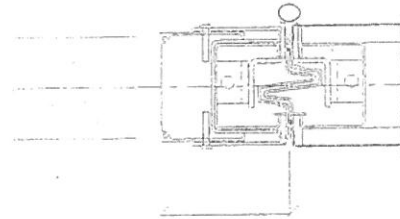
COMMUNICATING PANEL CLOSURE



The Communicating Panel closure consists of a full-sized panel hinged permanently and directly to a structural wall. It functions as a full height Pass Door and includes an adjustable bottom seal and flush pull handles.

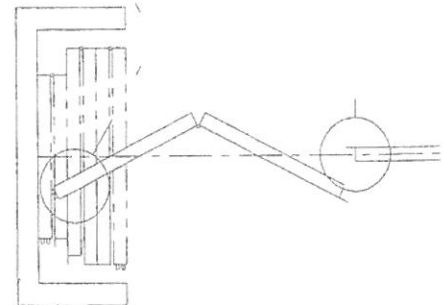
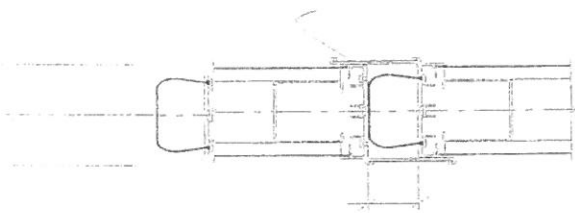
HINGED PANEL CLOSURE

This option performs the same functions as a Communicating Panel but is too small to be used as a Pass Door.



CLOSURE

The Lap Closure is accomplished by two (2) panels. One panel is equipped with a bulb seal to compress against a rigid and structural wall. The other panel is made with lap-type aluminum extrusion that overlaps with the adjacent panel, also equipped with a lap extrusion, on the opposite side. These last panels are fitted with adjustable bottom seals.

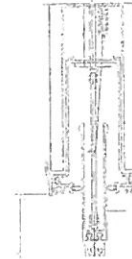


Bottom Seal Options

AUTOMATIC BOTTOM SEALS

Automatic Bottom Seals will automatically drop into position without the use of a removable wrench.

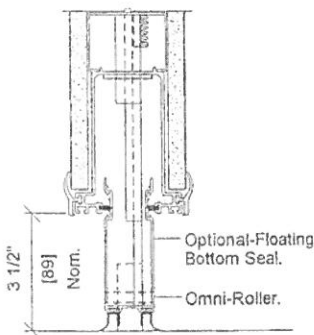
Each panel in the stack will already have the Automatic Bottom Seal in the retracted position. When extending each panel in the wall system, carefully align the adjacent panel or permanent wall first and as you continue to push, the nose of the Automatic Bottom Seal will force that seal back and down into the panel setting the seal. The Automatic Bottom Seal should now be in full contact with the permanent floor to stabilize the panel. Repeat the same routine until all of the panels have been set up.



FLOATING BOTTOM SEALS

Floating Bottom Seals consist of continuous-contact, vinyl sweep seals that ride on an aluminum chassis containing two (2) omni-wheel rollers that are under constant spring pressure towards the floor surface.

Once the panel is in place, there is no need to perform any additional task as the bottom seals are already set to stabilize the panel in this position. Repeat the same routine until all of the panels have been set up.

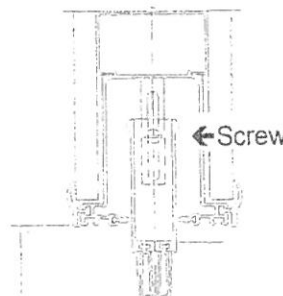


ADJUSTABLE BOTTOM SEALS

Adjustable Bottom Seals consist of field adjustable, continuous-contact vinyl sweep seals that allow for 3/4" of nominal adjustment.

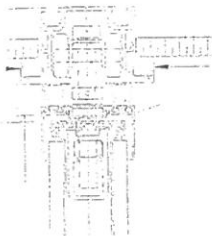
On the edge of each panel is a screw. To lower or raise the Adjustable Bottom Seal, simply loosen the screw on both edges and "adjust" the bottom seal up or down until it sufficiently contacts the floor surface. Once adjusted, tighten the screws.

Note: Always adjust the seal as close to the extended panel position as possible.



Other Panel Options

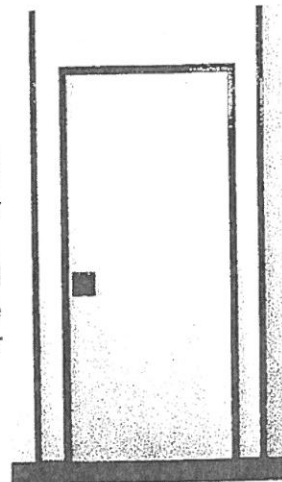
OPERABLE TOP SEALS



The Operable Top Seal consists of an edge-activated seal using a removable wrench as supplied by the manufacturer. The top seals are operated simultaneously and in conjunction with Operable Bottom Seals. (Note: See Operable Bottom Seals for additional information on how to operate these seals.)

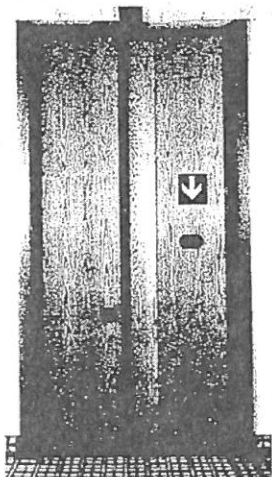
SINGLE or DOUBLE PASS DOOR PANEL OPERATION

Pass Door panels are constructed of the same materials as the operable wall system, unless otherwise noted on the shop drawings. Pass Door panels are moved and operated in a similar manner as the Intermediate Panels. A single or double pass door panel contains two (2) operating seal mechanisms, one in each leg (3000 Series only). Pass Door should be closed anytime panel is moved. All Model 2020 single and double pass door panels contain Adjustable Bottom Seals. In order to stabilize the pass door panel, KWIK-WALL has included one surface foot bolt on each pass door leg that should interface with a strike plate mounted in the floor.



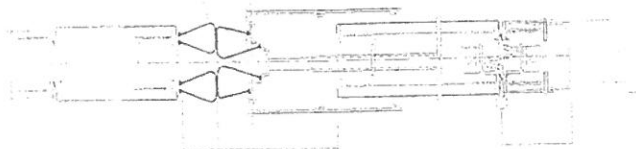
POCKET DOOR OPERATION

Pocket Doors are typically hinged to a wall jamb and constructed of the same material as the operable wall panels, unless otherwise noted on the shop drawings. Pocket Doors are provided to close off the pocket area when the wall system is in the stacked or extended position. They should be handled with the same type of care as the panels. The Top and Bottom of the pocket doors contain sweep seals which aid in completing the closure of the doors.

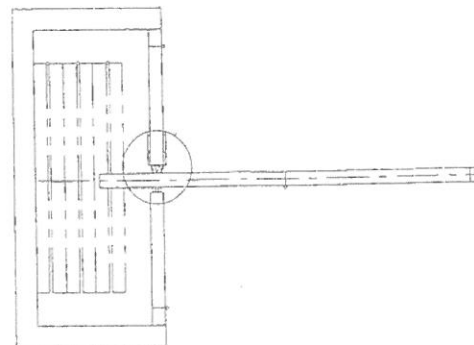


Double Pocket Door with Expander

For wall systems that specify the last panel to continue through the Pocket Doors, a Side Expander mechanism will be used and is activated by a removable wrench.



Panels not in use. ↑

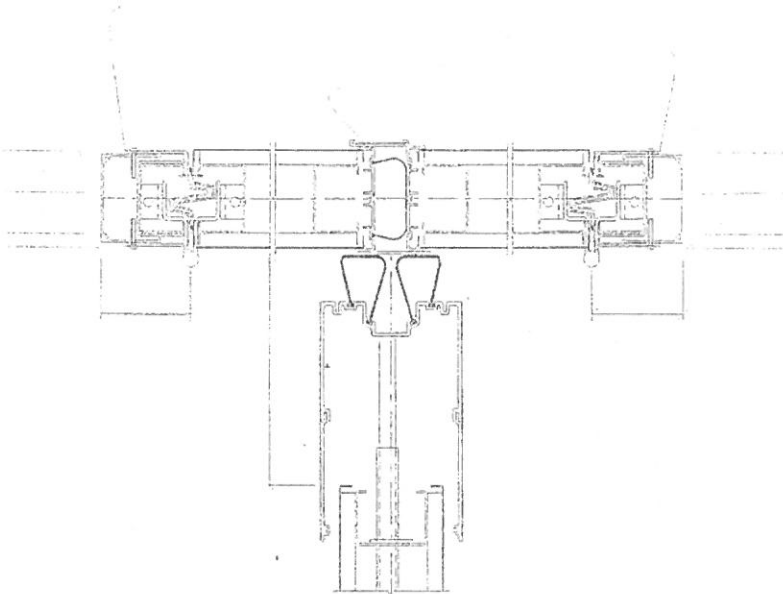


Panels in use. ↗

Double Pocket Door with Lap

For wall systems that specify the last panel to extend to the face of the pocket doors, a panel is mounted to each side of the pocket wall. On the edge of one panel is a bulb seal and on the other is a lap extrusion.

1. Once the last panel is out of the stack area, close the pocket doors and engage the foot bolts.
2. Then set up the last panel and expand the final closure mechanism against the face of the pocket door panels.



GENERAL MAINTENANCE

Track System:

The aluminum track system provided has a durable anodized clear satin finish which resists scratching and utilizes grooves and interlocking steel pins for positive alignment of adjacent track sections. The overhead track system should be checked annually for smoothness and proper joint alignment.

Flanges can be cleaned with any petroleum-based solvent once a year. Lubricant, such as "Sil-Glyde", should be applied every six months on the inside bottom flange of track will allow the carriers to roll smoother.

Panels:

Move all panels into position and activate bottom seals. Observe panels for smoothness of operation. Check for proper seal operation. Inspect overall wall appearance for damaged panel faces, alignment, or joint gaps.

FINISH MATERIAL CLEANING: STANDARD and UPGRADE VINYL

KWIK-WALL's Standard and Upgrade Vinyl finish materials meet and exceed G.S.A. Federal Specification CCC-W-408A and conform to the CFFA Quality Standard for Vinyl Coated Fabric Wall covering. Standard selections of vinyl have also been tested for fire hazard classification and have achieved a Class A rating in accordance to ASTM E84. In addition, these vinyl wall coverings are mildew-resistant and contain bactericidal additives to inhibit microbiological growth of staphylococcus aureus, escherichia coli, and aspergillus niger.

Cleaning soiled areas is best accomplished as soon as possible after soiling occurs. A mild solution of warm water and a standard household non-caustic cleaner solution applied with a medium bristly brush will clean most stains. The area can be wiped dry with a clean soft cloth. *Do not* use solvent-based cleaning solutions as they may affect the color pigment of the vinyl fabric.

FINISH MATERIAL CLEANING: UPGRADE CARPET and UPGRADE FABRIC

KWIK-WALL's Upgrade Carpet and Upgrade Fabric material consist of polyolefin yarn and fiber that is solution-dyed to assure consistent color and colorfastness. These finish materials are anti-microbial and do not support the growth of mildew or bacteria. The polyolefin staple fibers are stain resistant and are unaffected by most chemicals, acids, alkalis, salts, and cleaning agents (including household bleach). Upgrade Carpet and Upgrade Fabric are Class A rated as tested in accordance with ASTM E84 Tunnel Test.

Cleaning soiled areas from these surfaces is best accomplished as soon as possible after soiling occurs. A mild solution of warm water and a standard household non-caustic cleaner solution dabbed with a clean white cloth. The area may then be blotted with another clean, dry, soft cloth to absorb excess water. If you have to scrub the surface, gently work the cloth back and forth with the least amount of pressure necessary. *Do not* use a bristle brush, as it may damage the carpet nap. After cleaning, allow the material to air dry.



Operable, Portable and Accordion Wall Systems

P.O. Box 3267
Springfield, IL 62708
Phone: 217-522-5553
Website: www.kwik-wall.com

1010 East Edward Street
Springfield, IL 62703
Fax: 217-522-1170
E-Mail: kwinfo@kwik-wall.com

Distributed By:

Advisory Bulletin

BOBRICK

BUILDING VALUE SINCE 1896

TB-21 Stainless Steel Cleaning and Maintenance

Always: Wipe or polish with the grain direction of satin finishes.

Remove any cleaning or soap residue from stainless surface with water and wipe dry with clean cloth.

Caution: Avoid cleaning products containing bleach, hydrochloric acids and/or chlorides . . . these are frequently found in toilet bowl or tile cleaners and in abrasive scrubbing powders.

Avoid use of steel wool which can leave behind fine particles that cause surface rust.

Avoid use of abrasive cleaners on bright polish stainless steel surfaces.

CONDITION	CLEANING AGENT	METHOD OF APPLICATION
Dirt, smudges, and fingerprints	Use mild cleaning solution or stainless steel cleaners.	Apply cleaner. Wipe off soil using a cloth or sponge for smooth surfaces and a soft brush for textured surfaces. Rinse and dry.
Graffiti	Bobrick Graffiti Remover, part #891099 or equivalent.	Apply cleaner, rub spots with soft cloth or sponge. Rinse and dry.
Stubborn spots, atmospheric discoloration	Liquid or spray stainless steel polish.	As recommended by manufacturer. Rinse or dry.
Mineral deposit or scale from hard water	Bathroom cleaners containing phosphoric acid or acetic acids.	Apply liberally, allow to stand for a few minutes; scrub with coarse toweling or soft bristle brush in direction of grain. Rinse and dry.
"Rust" discoloration resulting from exposure to harsh environmental and/or chemical conditions	Appropriate cleaner listed above, plus 3M Scotch Brite pad #7447 or equivalent.	Clean surface as above, then rub stained area lightly with 3M Scotch Brite pad. Clean with stainless steel polish. Rinse and dry. Rub only with the grain direction of satin finishes . . . do not use on bright polish stainless steel.