



**GOVERNMENT OF THE DISTRICT OF COLUMBIA
DEPARTMENT OF GENERAL SERVICES**

**STATEMENT OF WORK FOR
FORT DAVIS PLAYGROUND AND SPLASHPAD**

1. DESCRIPTION OF PROJECT

The District of Columbia Department of Parks and Recreation (“DPR”) seeks the services of a design-builder (“Design-Builder”) to provide all necessary services as required to design and construct the Fort Davis Playground and Splash pad located at 1400 41st Street, SE, Washington, DC.

2. SCOPE OF WORK

The proposed project will include, but not is limited to, the following:

- a) All design services required to produce a permit set of construction documents based on the attached Concept design (**Exhibit A**); and
- b) All construction services required to complete the playground and splash pad by September 15, 2017.

3. PROGRAM REQUIREMENTS

The Playground shall include at a minimum the following:

- a) 10 LED Light fixtures mounted on 20’ tall light poles spaced evenly throughout the park. See specifications in **Exhibit A** for details.
- b) 2 outdoor drinking water fountains with bottle filling station and pet fountain incorporated into the design. See specification in **Exhibit A** for details.
- c) Concrete walkways in compliance with ADA regulations, as notated on concept drawing with a dotted grey line surrounding the perimeter of the splash pad, play area, and seating & shade area. Include two pathways leading to the Recreation Center with one leading directly to the main entrance. **Provide add/alternate walkway using asphalt.**
- d) Signage to denote intended age usage and playground rules: one 9” x 12” sign shall denote play area for 2 – 5 year old children; another 9” x 12” sign shall denote play area for children 5 – 12 years old. Signage to be placed at each entrance of the appropriate play area. Playground rules shall be posted at each entrance of the park on a green 32” x 24” aluminum sign. Signage for spray park rules shall also be included at each entrance of the splash pad. See specification in **Exhibit A** for details.
- e) Recycled/recyclable materials from existing site are to be used when possible i.e. signage, message boards, etc.
- f) Spray Park shall have a circular 10” thick reinforced concrete pad with slip-resistance surface. Pad shall be 20’ in diameter with 10 motion sensor jets. Provide add alternate jets with flow controlled valves. Spray park to be on a recirculating system as opposed to a system that flows to a drain. Splash Pad incorporating lighting and safety improvements.
- g) Playground surface shall be a synthetic turf product similar to XGrass Superlawn Xtreme. See specifications for this product and other examples of synthetic turf in **Exhibit A**.

- h) In coordination with the District's MS4 Permit, adopt the design, construction and recommended maintenance of stormwater controls to achieve on-site retention of 1.2" of stormwater from a 24-hour storm with a 72-hour antecedent dry period through evapotranspiration, infiltration and storm water harvesting and use.
- i) Sustainability design of bio-retention pond. Bio-retention area shall be designed to incorporate runoff from the roof of the facility along with the associated drainage areas of the designed park spaces.
- j) Drip irrigation tied directly to the DPR Central Irrigation System is to be used.
- k) Native landscape plantings to be used in surrounding landscape (where once established, native plants will not need fertilizers, herbicides, pesticides or watering).
- l) The sitting and shade area is to include 5 picnic tables with 4 individual seats and umbrella option for each table as well as 2 additional ADA tables, with 3 seats and an umbrella. (Example: Dumor tables - <http://dumor.com/products/tables/table-101>)
- m) Incorporate 6 standard DPR Dumor benches that are each 6' long throughout the park. See specification in **Exhibit A** for details.
- n) Preserve all existing trees and keep topsoil as undisturbed as possible. Prioritize the inclusion of Native and Adaptive Trees that will assist in meeting the District's 40% Tree Canopy Goal by 2035.
- o) Playground equipment for 2-5 year olds and 5-12 year olds: Equipment must meet/exceed current ADA requirements for inclusive play.
- p) The following equipment must be used for 2-5 year olds:
 - a. 2 bay swing set with four bucket seats
 - b. Climbing structure with multiple slides and a bridge (example: <https://playworld.com/products/around-down>)
 - c. Structures to aid with balance (Example: <https://playworld.com/products/butterfly-climber>)
 - d. Play panel (Example: <https://playworld.com/products/drive-away-0>)
 - e. Inclusive play element (Example: <https://playworld.com/products/cozy-cocoon-0>)
- q) The following equipment must be used for 5-12 year olds:
 - a. 2 bay swing set with one ADA harness seat
 - b. 1 Multi-level climbing structure with 2 separate slides and capacity for approximately 35-40 children (example: <https://playworld.com/products/350-1733>)
 - c. 1 Spinning Structure (example: <http://www.kompan.us/playground-equipment/solitaires-spinners/Supernova-Blue-GXY916000>)
 - d. 1 ADA Accessible Electronic Play Feature (example: <https://playworld.com/products/360-accessible>)
 - e. 1 Sensory Panel

4. MEETINGS

The Design-Builder, the DGS Project Manager and DPR representative shall meet as necessary to review Design-Builder's work. The Design-Builder shall provide the DGS Project Manager meeting minutes of a weekly on-site construction meeting within three (3) business days of the meeting.

5. SERVICES REQUESTED

Permit & Pricing Documents

- a) The Design-Builder shall meet with DGS and DPR as required to develop design ideas

for the site.

- b) The Design-Builder shall provide up to one (1) layout design for the site based on DGS and DPR input.
- c) The Design-Builder shall Work with DGS and DPR to review the design and incorporate any changes into a permit set of construction documents within three (3) weeks of Notice to Proceed.
- d) The Design-Builder shall provide/procure all permits as required to complete the project.

6. COORDINATION

Coordination of the work is the responsibility of the Design-Builder. The Design-Builder is required to coordinate with all agencies at least two business days prior to any work.

7. SITE CLEANLINESS

During the contract and/or as directed by the DGS Project Manager, as the installation is completed, Design-Builder shall ensure that the site is clear of all extraneous materials, rubbish or debris.

8. SITE SECURITY

Design-Builder shall secure the project work area by a minimum 6'-0" chain link fence. Design-Builder shall ensure site is locked during non-work hours and absences from the site during working hours.

9. PROTECTION OF EXISTING ELEMENTS

Design-Builder shall protect all existing features, public utilities and other existing structures during construction. Design-Builder shall protect existing trees and shrubs from damage during construction. Protection shall extend to the root systems of existing vegetation. Design-Builder shall not store materials or equipment, or drive machinery, within drip line of existing trees and shrubs. No vehicles are allowed on the site at any time.

10. DAMAGE BY DESIGN-BUILDER

Design-Builder is responsible for the replacement, repair or patch of any exiting surfaces or materials damaged during construction by own or subcontractors crews.

11. PERMITS

Design-Builder is responsible for providing all public space and all permits as required to complete the scope of work.

12. SUBMITTALS

Design-Builder shall submit to the DGS Project Manager for review and approval all shop drawings, material data and samples provided by Design-Builder, vendors and/or manufacturers. The Design-Builder shall submit a submittal log to the DGS Project Manager within five (5) business days of the Notice to Proceed. The DGS Project Manager shall review and approve or reject submittals within five (5) business days of receipt from the Contractor.

13. CFA/DC HISTORIC PRESERVATION

Design-Builder shall include coordination as needed with the Commission of Fine Arts (“CFA”) and DC Historic Preservation Office (“HPO”) (archeology).

14. COMMUNITY OUTREACH/COORDINATION

Design-Builder shall include coordination/attendance as needed to various community meetings. This also includes presentation to the community through each design phase.

15. DESIGN AND CONSTRUCTION SCHEDULE

Design-Builder shall submit to the DGS Project Manager for review and approval a design schedule within five (5) business days of Notice to Proceed. During the Design & Preconstruction Phase, the Design-Builder and the Department shall agree on a construction phase schedule. The new playground must be completed no later than September 15, 2017.

16. CONSTRUCTION

Design-Builder shall provide all labor, equipment and materials as required to install the park site improvements, including but not limited to:

- Layout and staking;
- Erosion and sediment control;
- Site clearing (e.g., demolition, clearing and grubbing as necessary, topsoil stripping and stockpiling as necessary);
- Earthwork (e.g., cut, fill, trenching, rough grading, finish grading);
- Utility installation, including electric, water, and storm-water management required by the District Department of the Environment (“DDOE”). Paving and/or surfacing;
- Furnishings and installation (e.g., benches, fences and gates, litter receptacles).

17. WALK-THROUGH INSPECTION

At the achievement of Substantial Completion, the DGS Project Manager shall perform a walk-through inspection in the presence of the Design-Builder. The Design-Builder shall prepare a written report stating any deficiencies found during the walk through, identify the responsible parties, and ensure that all the deficiencies are corrected by the Design-Builder prior to demobilization. The Design-Builder shall not demobilize from the site until receiving written notice, in writing, from the DGS Project Manager the deficiencies have been corrected to the DGS Project Manager’s satisfaction.

18. AS-BUILT DRAWINGS, OPERATION & MAINTENANCE & WARRANTY INFORMATION

The Design-Builder shall prepare one (1) full size, two (2) half size and four (4) electronic copies "As-Built" plans of the site, including all the modifications performed during construction, and submit to the DGS Project Manager within thirty (30) days after reaching Substantial Completion. The Design-Builder shall also submit O&M's and Warranty information on all installed products, materials and workmanship within thirty (30) days after reaching Substantial Completion. The Design-Builder shall submit four (4) hard copies and four (4) electronic copies of each: Operation & Maintenance Manuals and Warranty Information to the DGS Project Manager.

19. PERIOD OF PERFORMANCE

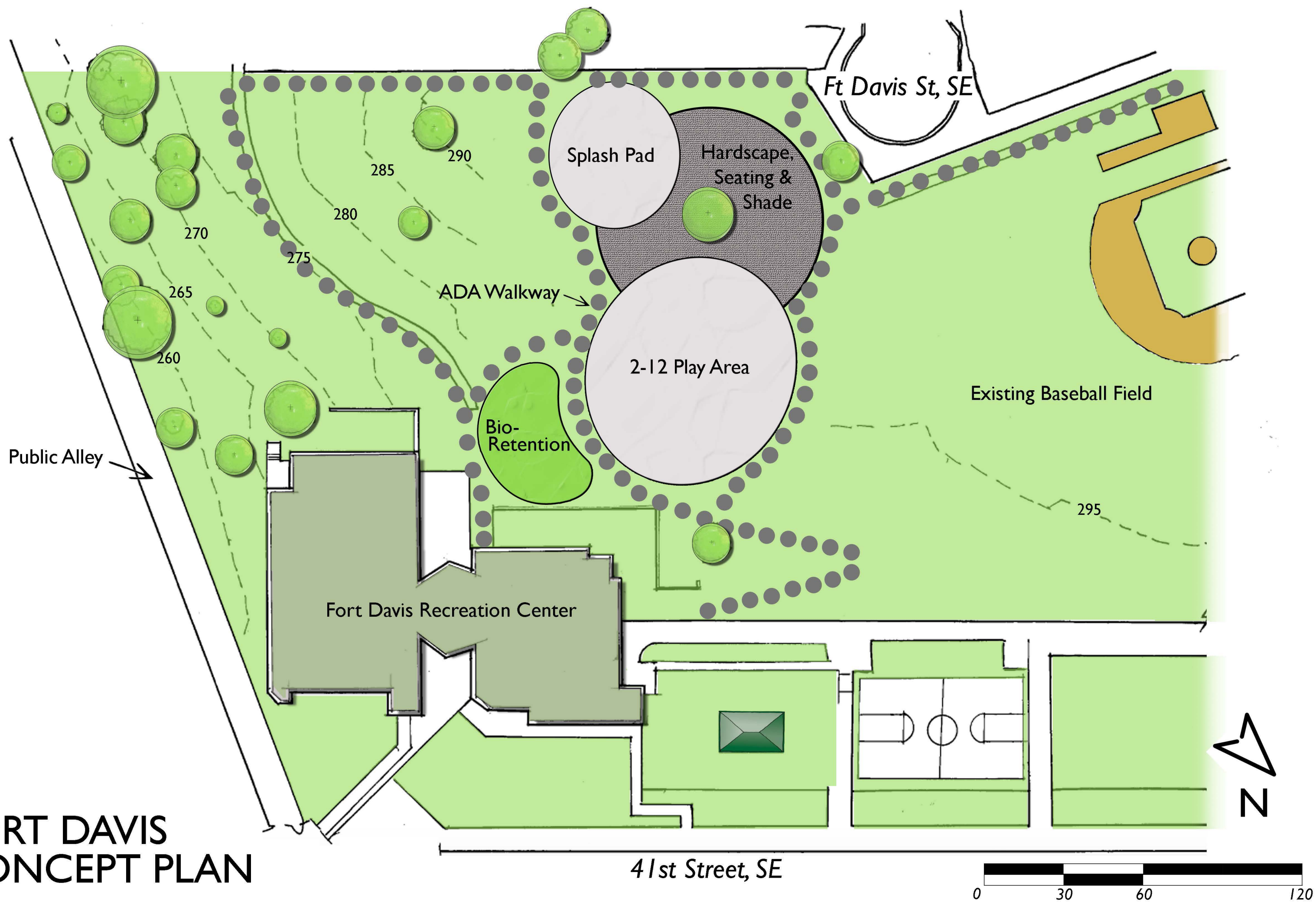
The Design-Builder shall complete and deliver the playground no later than September 15, 2017

20. EXHIBITS

The following documents are hereby attached/incorporated into this Statement of Work:

- Exhibit A Concept Design for Fort Davis Playground, including basis of design specifications, and general site plan

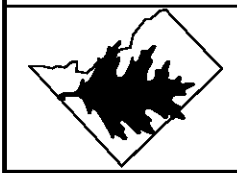
FORT DAVIS CONCEPT PLAN



DATE	7/24/13
ROUTE	NO SCALE
SCALE	NA
TITLE	DETAIL

SPRAY PARK,
RULES,

DISTRICT OF COLUMBIA
DEPARTMENT OF PARKS AND RECREATION
Office of Planning & Capital Projects
Main Office: 1250 U Street, N.W.
Washington, D.C. 20009
202-673-7647
www.dpr.dc.gov



24"

SPRAY PARK RULES & REGULATIONS

- No skateboards, bicycles or roller skates allowed within the spray park.
- No animals or pets permitted.
- Persons wearing diapers must wear a swim diaper. Disposable or cloth diapers are not allowed.
- No food, beverages or glass containers permitted.
- No standing on sprinkler heads.
- No children allowed on spray pad without proper supervision.
- No running or rough play permitted within the spray park.
- **NOTE:** The water is not suitable for drinking.

Patrons are subject to the rules and regulations of the DC Department of Parks and Recreation and the laws of the District of Columbia. Neither the District of Columbia, its agencies or officials, shall be liable for any injury or damages that occur within the spray park area.

DISTRICT OF COLUMBIA PARKS AND RECREATION

16"

NOTES
 TITLE FONT: GARAMOND, TIMES NEW ROMAN, OR EQUAL
 FIELD FONT: ARIAL, HELVETICA, OR EQUAL
 CHARACTER, BORDER AND GRAPHIC COLOR: WHITE (PANTONE 7485 C)
 FIELD COLOR: DARK GREEN (PANTONE 553 C)



Single Face Alum. Sign
Qty: TBD


Scale: 3" = 1'-0"

- *1 Sign Made to Look Like 2
- *.125 Thk. Alum. Finished PMS 553c
- *Back of Sign Finished PMS 553c
- *Sign to have a Matthews Clear Coat Finish
- *Seal w/ Anti-Graffiti Barrier
- *Holes TBD



NOTES


FONT: GARAMOND, TIMES NEW ROMAN, OR EQUAL
 CHARACTER, BORDER AND GRAPHIC COLOR: WHITE (PANTONE 7485 C)
 FIELD COLOR: DARK GREEN (PANTONE 553 C)
 BORDER: 1/4", OFFSET 1/4" FROM EDGE

DATE 10/05/09	NO NA	TITLE PLAYGROUND SIGN, 5-12 YEARS OLD	DISTRICT OF COLUMBIA DEPARTMENT OF PARKS AND RECREATION Office of Planning & Capital Projects Main Office: 3149 16th Street, N.W. Washington, D.C. 20010 202-673-7647 www.dpr.dc.gov	
SCALE NO SCALE	TYPE DETAIL			



NOTES

FONT: GARAMOND, TIMES NEW ROMAN, OR EQUAL
 CHARACTER, BORDER AND GRAPHIC COLOR: WHITE (PANTONE 7485 C)
 FIELD COLOR: DARK GREEN (PANTONE 553 C)
 BORDER: 1/4", OFFSET 1/4" FROM EDGE

DATE 10/05/09	NO. 01 NA	TITLE PLAYGROUND SIGN, 2-5 YEARS OLD	DISTRICT OF COLUMBIA DEPARTMENT OF PARKS AND RECREATION Office of Planning & Capital Projects Main Office: 3149 16th Street, N.W. Washington, D.C. 20010 202-673-7647 www.dpr.dc.gov	
SCALE NO SCALE				
TYPE DETAIL				



Halsey Taylor[®]
Satisfying Thirsts Since 1912

Endura II™ Outdoor Tubular Bottle Filling Station

Model 4420BFDB



This fountain is certified to
NSF/ANSI 61-Annex G, AB1953

GENERAL

Pedestal, Endura II™ Steel Outdoor Dual Station Fountain with Bottle Filling Station and Pet Fountain. Rounded corner design with textured powder-coat finish and E-Coat immersion for year-round beauty with minimum maintenance. The E-coat immersion process coats the inside and outside for the ultimate in corrosion protection.

BOTTLE FILLER

Provides a quick fill at 1 gallon per minute. Laminar flow provides a clean fill with minimal splash and easy maintenance.

BUBBLER

Vandal-resistant bubbler is one-piece, chrome-plated. Unit has integral hood guard design to prevent contamination from other users, airborne deposits and tampering.

BASIN

Contour-formed stainless steel design with rounded edges reduces splatter, ensures proper drainage and prevents standing water.

PUSHBUTTON ACTUATION MECHANISM

Self-closing, vandal-resistant pushbutton does not require grasping or twisting.

INLET STRAINER

Easily cleaned in-line strainer screen traps particles of 140 microns or larger before they enter the waterway.

WATER INLET & DRAIN OUTLET

Inlet: 3/8" O.D. tubing

Outlet: 1-1/4" tube outlet for 1-1/4" slip joint connection

ACCESS PANELS

Heavy-gauge steel with vandal-resistant screws. Provides access for easy hook-up of all plumbing connections.

PET FOUNTAIN

Actuated by upper pushbutton. Slow drainage feature for easy drinking.

SUGGESTED SPECIFICATION

Unit shall include powder-coated finish with vandal-resistant pushbutton actuation, vandal-resistant bubblers with integral hood guard, and contour-formed rounded basins to reduce splash and prevent standing water. Bottle Filler shall include a laminar flow for minimal splash and provide 1 gallon per minute fill rate. Shall comply with ADA standards and be certified to lead-free compliance including NSF/ANSI 61-Annex G, AB1953.

Dual Station with Pet Fountain



Model 4420BF1UDB is shown. Image varies based on quantity and location of bottle fillers.

Standard Finish is Evergreen Textured powder-coat Endura II™. Additional colors available.

Trap and service stop not included.

OPTIONS

Available with single or dual bottle fillers.

JOB NAME: _____

ENGINEER/CONTRACTOR NAME: _____

APPROVAL: _____
DATE: _____



halseytaylor.com
HALSEY TAYLOR, 2222 CAMDEN COURT, OAK BROOK, ILLINOIS 60523

Model 4420BFDB

Endura II™ Dual Station Outdoor Tubular Bottle Filling Station with Pet Fountain

(CONTINUED)

MOUNTING INSTRUCTIONS and PLUMBING CONNECTIONS

Provide solid, well-drained surface to mount pedestal fountain (concrete pad recommended). (10) 1/2" anchor bolts (not included) should be attached firmly to mounting surface in order to secure unit. (Refer to rough-in diagram)

Locate and install plumbing through ground as required. NOTE: Unit is not furnished with service valve.

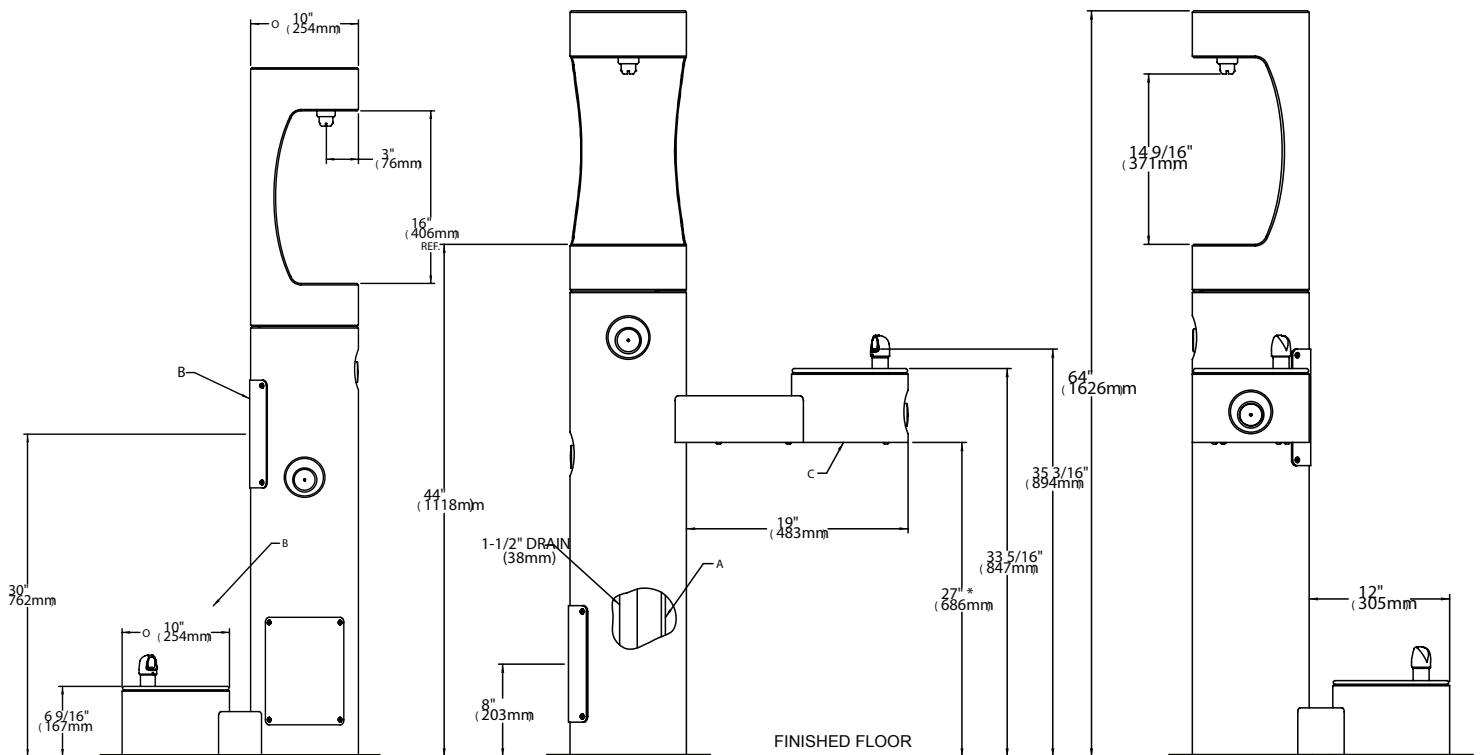
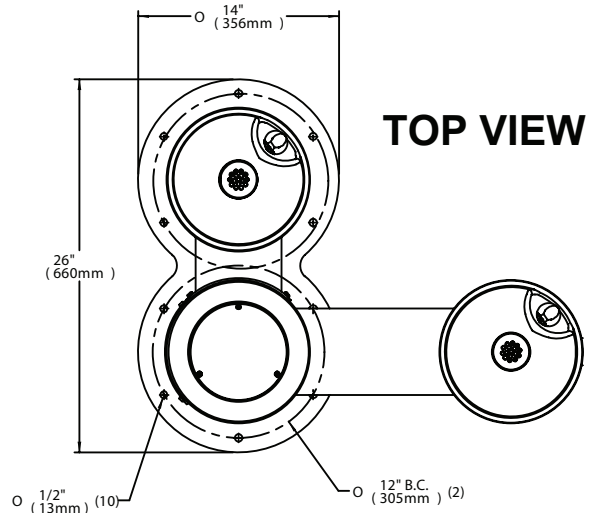
Position pedestal over plumbing and secure base to anchor bolts. Remove access panels and connect supply and water lines. Turn on water supply and check for leaks. Reassemble access panels to pedestal.

Trap and service stop not included.

FRONT & SIDE VIEWS

(Model 4420BF1UDB is shown. Image varies based on quantity and location of bottle fillers.)

OPERATING PRESSURES:
Supply water – 105 psi maximum

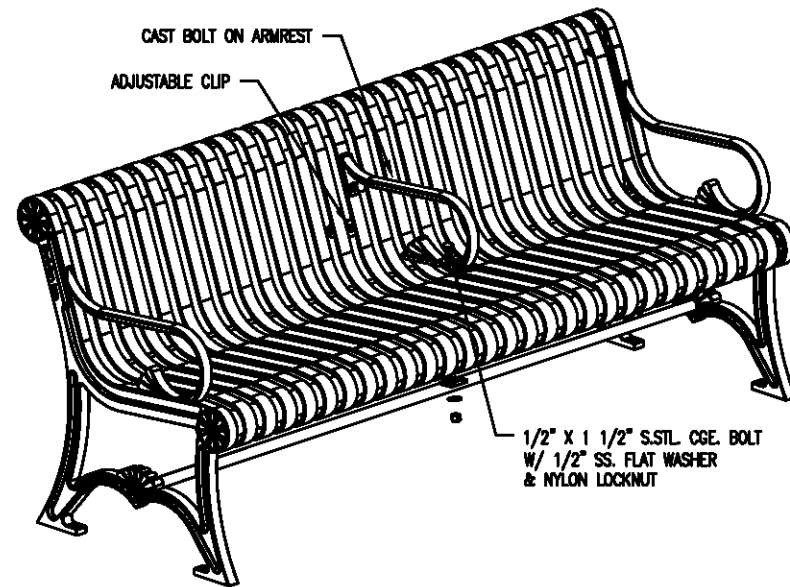
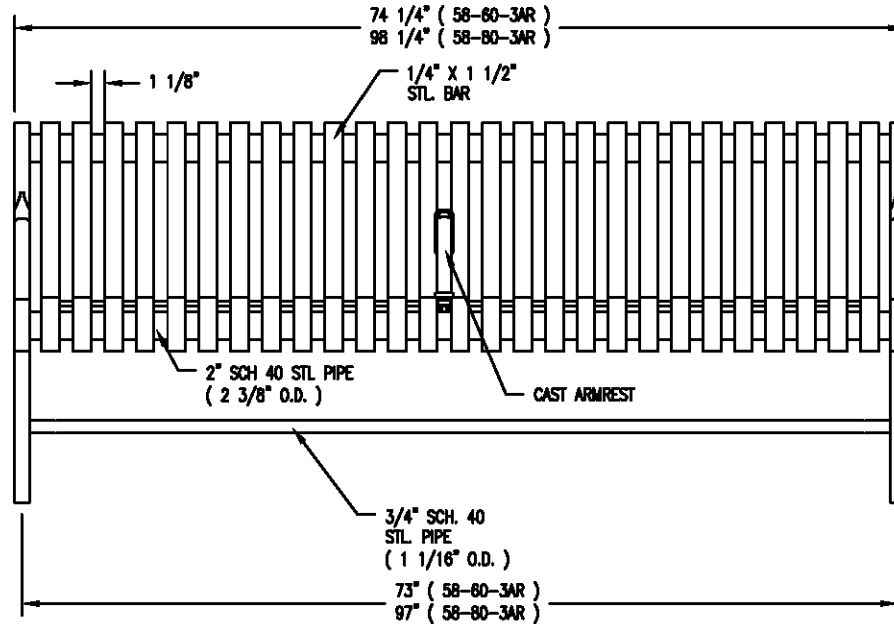
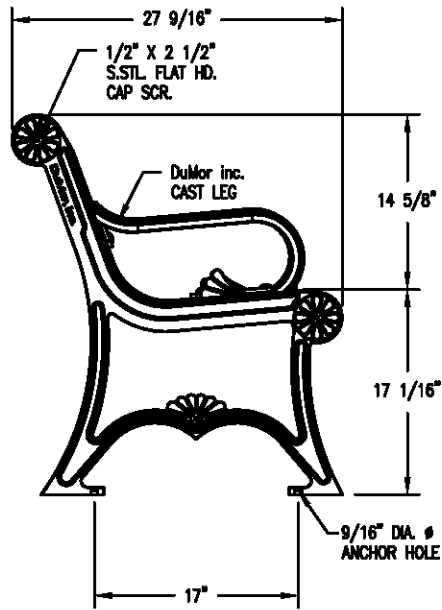


LEGEND:

- A = 3/8" O.D. UNPLATED COPPER TUBE CONNECT- SHUT OFF VALVE BY OTHERS
- B = ACCESS PANEL (8" x 10")
- C = REMOVABLE BOTTOM COVER

*ADA Requirement

Halsey Taylor®



LENGTH OPTIONS

- 6' BENCH
- 8' BENCH

NOTES

- 1.) ALL STL. MEMBERS COATED W/ ZINC RICH EPOXY THEN FINISHED W/ POLYESTER POWDER COATING.
- 2.) 1/2" X 3 3/4" EXPANSION ANCHOR BOLTS PROVIDED.
- 3.) CUSTOM LETTERING AVAILABLE FOR RECESSED SIDE PANELS (TOTAL OF 37 SPACES)

CUSTOM LETTERING (37 SPACES) _____

DuMor, inc.
 P.O. Box 142 Mifflintown, PA 17059-0142

DATE DRAWN : 3/22/94
 DRAWN BY : AWH
 DATE REV. : 11/21/99
 REV. BY : JSB

TITLE

BENCH

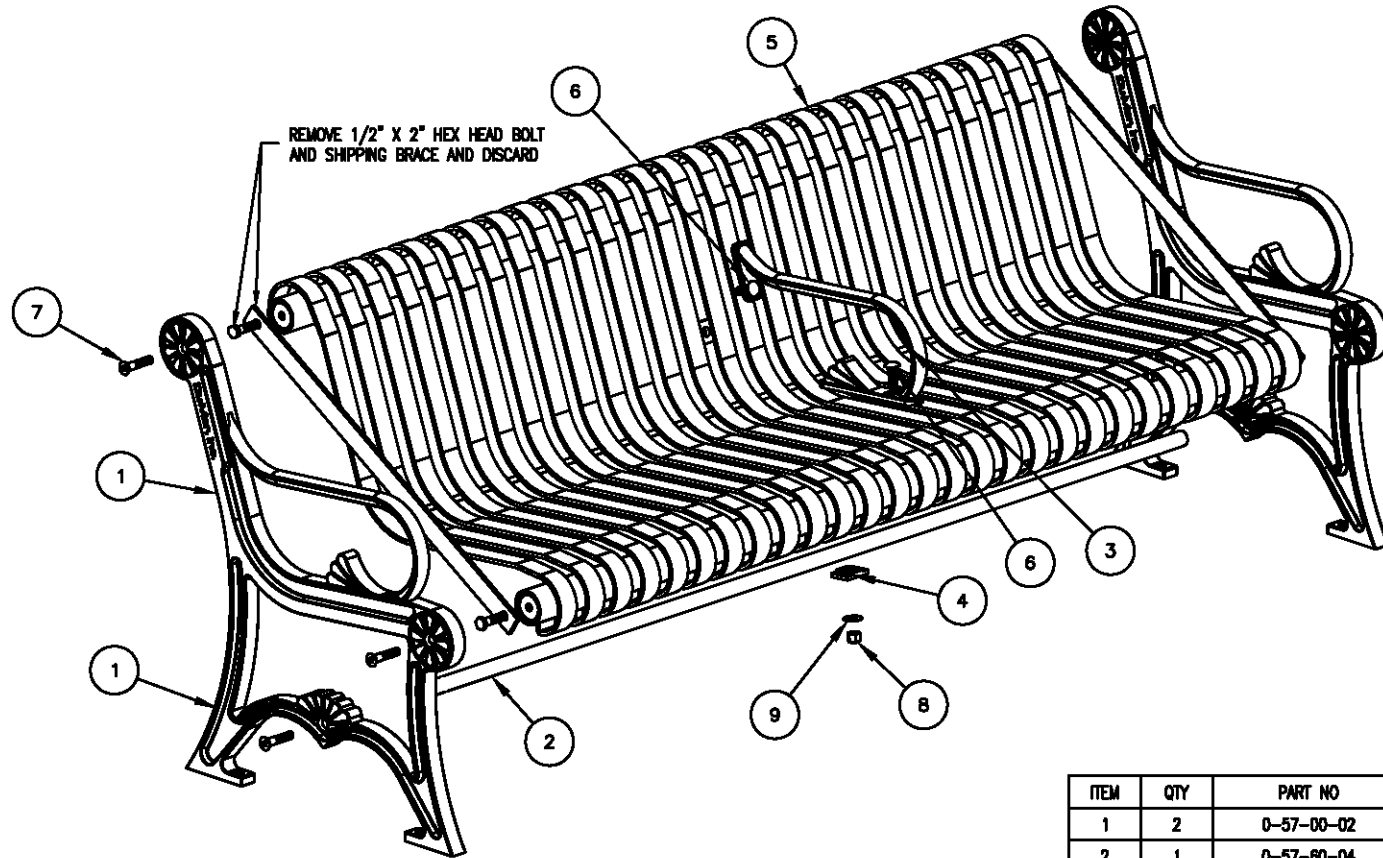
REVISION D

DRAWING NUMBER

58 SER-3AR SH1

NOTES:

- 1.) DURING ASSEMBLY DO NOT COMPLETELY TIGHTEN HARDWARE.
- 2.) THE ACTUAL PARTS WILL NOT BE NUMBERED, NUMBERS ONLY APPLY TO DRAWING.
- 3.) UPON COMPLETION OF BENCH ASSEMBLY, SQUARE ALL COMPONENTS THEN TIGHTEN ALL HARDWARE.



KITS REQUIRED

ITEM	QTY	PART NO	DESCRIPTION
10	1	K-ANCO860-4	1/2" X 3 3/4" SS ANCHOR KIT (4PC)
11	1	K-CG0824-2L	1/2" CGE BOLT HARDWARE KIT (2PC)
12	1	K-FC0840-6	1/2" CAP HARDWARE KIT (6PC)

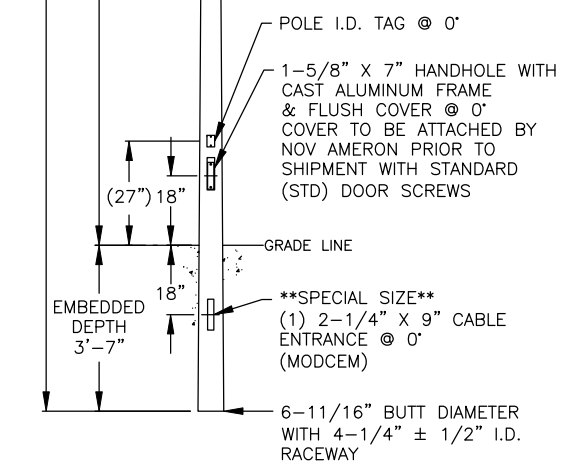
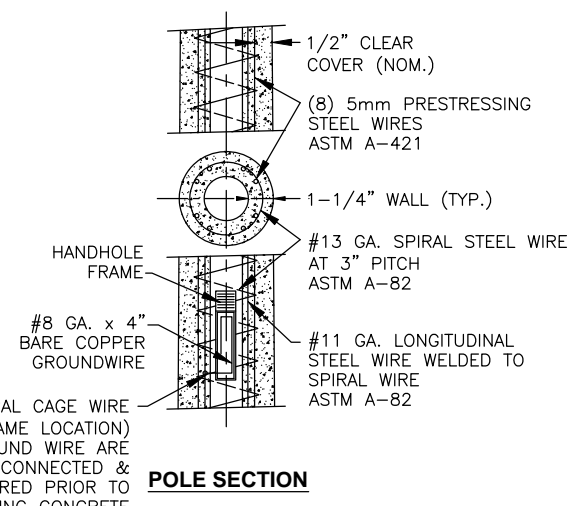
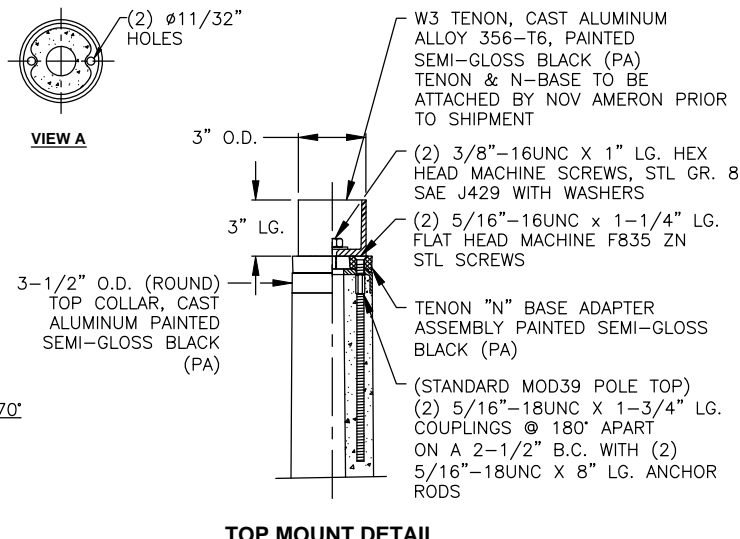
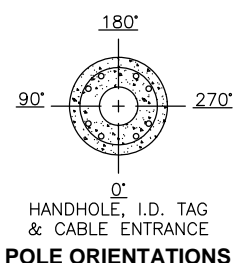
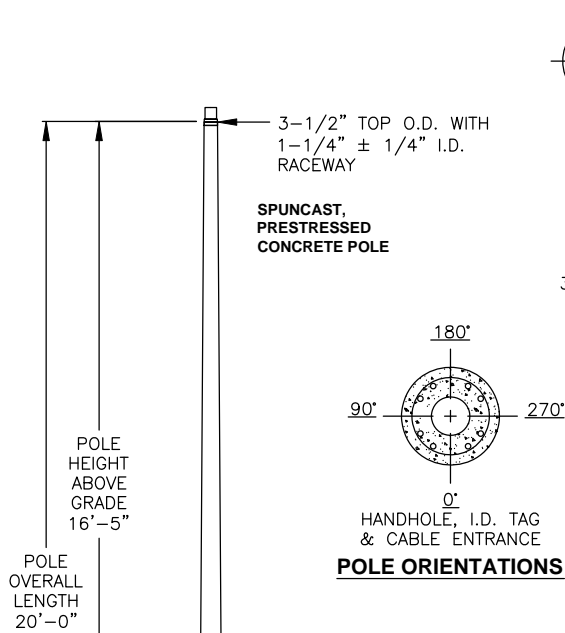
ITEM	QTY	PART NO	DESCRIPTION
1	2	0-57-00-02	CAST IRON BENCH SUPPORT
2	1	0-57-60-04	71 3/4" PIPE BRACE
3	1	0-58-00AR-03	CAST IRON BOLT ON ARMREST
4	2	0-58-00AR-04	ARMREST BOLT CLIP MACHINED
5	1	0-58-60-01	6" STL SEAT
6	2	1-11-042	1/2" X 1 1/2" SS CGE BOLT
7	6	1-12-065	1/2" X 2 1/2" FLT SKT HD CAP SCR
8	2	1-20-015	1/2" SS NYLON LOCKNUT
9	2	1-22-015	1/2" SS FLAT WASHER

DuMor, inc.
P.O. Box 142 Mifflintown, PA 17059-0142

TOOLS REQ'D
3/4" WRENCH
5/16" ALLEN WRENCH
DRILL & 1/2" MASONRY DRILL BIT

DATE DRAWN : 11/21/99
DRAWN BY : JSB
DATE REV. :
REV. BY :

TITLE
INSTALLATION
REVISION **A** DRAWING NUMBER **58 SER-3AR SH2**



COMPLIANCE TO ANY CODE NOT EXPLICITLY LISTED ON THIS DRAWING IS NOT GUARANTEED. PLEASE CONTACT NOV AMERON IF YOU HAVE SPECIFIC CODE REQUIREMENTS.

PRINTED BY: DIANNE GARNER
ON Tuesday, May 07, 2013

REV.	DATE	DESCRIPTION	DRN.	APPR.

"F" LEVEL CONFIG CODES		
OPTION CLASS	ENTRY	INFO.
COATING	I	
HH COVER	66516E	
DOOR SCR	STD	
MISC. MOD	MODFE	NOTE 8

"P" LEVEL CONFIG CODES		
OPTION CLASS	ENTRY	INFO.
MIX	6P	
FINISH	5	
COLLAR	65810EPA	ROUND
POLE TOP CON.	MOD39	
STRUC. MOD	MODDCI	NOTE 9
MISC. MODS	MODCEM	NOTE 7

SMALL EMBEDDED ROUND POLE

POLE DESIG-NATION	POLE HEIGHT ABOVE GRADE	EM-BEDDED DEPTH	OVER-ALL LENGTH	BUTT DIA.	ULTIMATE G.L. MOMENT (ft.-lbs)	POLE WEIGHT (lbs.)
SER05SPL	16'-5"	3'-7"	20'-0"	6-11/16"	8,400	380

() POLES REQUIRED EACH WITH W3 CAST ALUMINUM TENON ASSEMBLY 3" O.D. X 3" LG. (P/N: 40094EPA) & "N" BASE ASSEMBLY (P/N:40021EPA)

- NOTES:**
- MIX (6P5): BLACK PEBBLESTONE, LIGHTLY EXPOSED AGGREGATE FINISH WITH AMERSHIELD ANTI-GRAFFITI COATING.
 - ASTM C-150 TYPE III GRAY CEMENT.
 - f_c @ 28 DAYS=7,000 PSI, USING SPUN CYLINDER TEST.
 - f_c @ 28 DAYS=5,000 PSI, USING ASTM C-31 CYLINDER TEST.
 - POLES MANUFACTURED TO ASTM C-1089-13 SPECIFICATIONS.
 - PROTECTIVE COAT EXPOSED P.C. WIRES AT POLE ENDS.
 - MODCEM: CABLE ENTRANCE 2-1/4" x 9" @ 0° AS SHOWN.
 - MODFE: POLE BOTTOM PREPARATION FOR FREEZING OR CORROSIVE COASTAL ENVIRONMENT; SEE DOCUMENTATION.
 - MODDCI: CORROSION INHIBITOR MIX MODIFICATION.
 - THE POLE (& IMPLIED TENON TOP ASSEMBLY) DEPICTED ON THIS DRAWING IS DESIGNED TO WITHSTAND THE LOADS IMPARTED BY A SINGLE ACORN OR GLOBE POST TOP TYPE LUMINAIRE (NOT TO EXCEED 2.5 SQ. FT. EPA, 60 LBS) PER THE 2009 AASHTO LTS-5 IN A 130 MPH WIND ZONE (3-SECOND GUSTS). NO TORSIONAL (ARM OR TWIST) LUMINAIRE LOADS ANALYZED. PLEASE ADVISE IF INTENDED LOADING EXCEEDS THESE VALUES.

APPROVED BY _____ DATE _____

NOV Ameron Pole Products

**TAKOMA RECREATION CENTER
WASHINGTON, DC
SER05SPL POLES WITH TENON ASSEMBLY**

THIS DOCUMENT CONTAINS INFORMATION WHICH IS PROPRIETARY TO NOV AMERON. IT SHALL NOT BE REPRODUCED, USED OR DISCLOSED TO ANYONE WITHOUT THE PRIOR WRITTEN PERMISSION OF NOV AMERON.

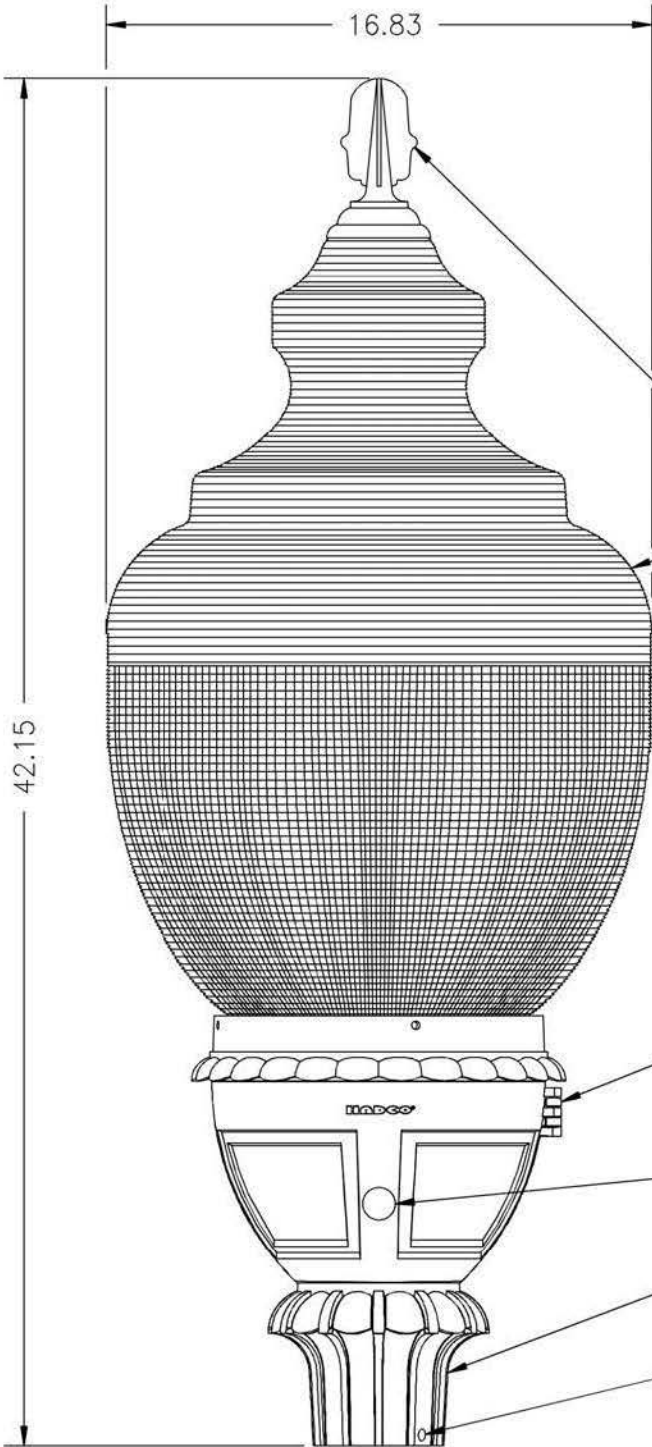
DRAWN: T.L.	05/13	SCALE	DWG. NO.	REV
CHK'D:		N.T.S.	1305-008	

Ordering Guide:
C11521: LUMINAIRE

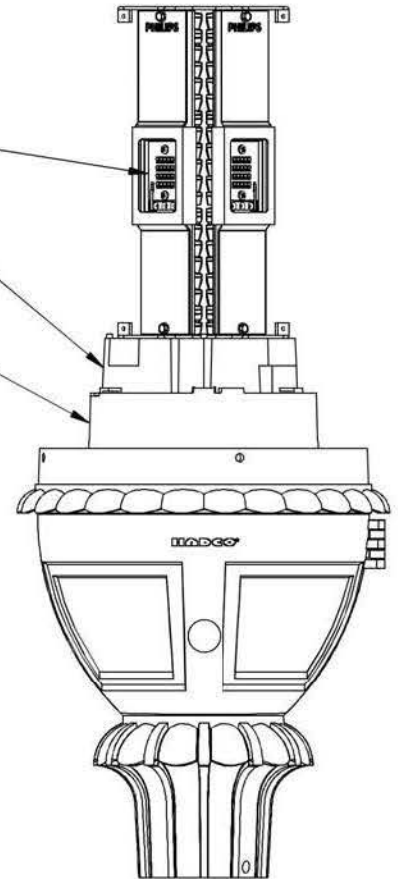
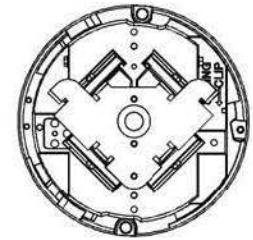
Color:
Black

Lumilock LED specifications:

- 80, 4000K (neutral) Philips Lumileds Rebel ES LED's on aluminum core pcb, sealed acrylic lens, IP66 rated, 60,000 hrs. at 25°C ambient temperature & 70% lumen maintenance, 70 color rendering index (CRI) nominal, type V light distribution.
- Integral Philips Advance Xitanium LED driver, class 1, IP66 rated, 530mA, IntelliVolt 120-277 VAC, 50-60 Hz, RoHS compliant, field replaceable 10kV/10kA surge suppression.



Top View
Lumilock LED Assembly



FINIAL:
CAST ALUMINUM

ROOF: CLEAR
PRISMATIC ACRYLIC

REFRACTOR GLOBE:
PRISMATIC ACRYLIC

LED MODULE:
TYPE V LUMILOCK,
IP66 RATED

DRIVER COVER:
DIE-CAST ALUMINUM
W/ TOOL-LESS ENTRY

CAMDEN ADAPTER:
DIE-CAST ALUMINUM

DRIVER ENCLOSURE:
DIE-CAST ALUMINUM,
WEATHERPROOF W/
TOOL-LESS ENTRY
ACCESS DOOR

PHOTO CONTROL:
TWIST-LOCK RECEPTACLE
(eye by others)

SLIP FITTER:
3" I.D.

FASTENERS:
STAINLESS STEEL
HEX HEAD BOLTS

Full Specification Fixture Drawing

NOTICE:
THIS DRAWING IS FOR REFERENCE ONLY. CHECK FOR LATEST REVISION PRIOR TO ORDERING



100 Craftway Drive
Littlestown, Pa 17340
Phone 800-331-4185
Fax 717-359-9289
www.hadco.com

JOB NAME:

REP. TERRITORY:

142

CONFIDENTIAL:
This drawing is confidential and proprietary to Philips Hadco and may not be reproduced without the express written consent of Philips Hadco. Any use hereof or of any of the information or detail herein shall be for the sole benefit of Philips Hadco.

PRODUCT APPROVALS

HADCO JAZ

CUST.

SCALE:

1:6

DATE:

DRAWN BY:

SMK

DRAWING NUMBER:

C11521-DWG01

REP:

Deporter, Dominick

REV:

A

BY:

PCN: 13-026

DATE:



ASTROTURF® PUREGRASS® 8MM

MATERIALS

Primary Yarn Polymer	100% Nylon
Yarn Cross Section	Diamond Monofilament
Standard Color	Turf Green
UV Stabilized	Yes
Fabric Construction	Tufted
Primary Backing	Tri-Composite Woven PP
Coating Type	BioCel™ Polyurethane 8mm Foam
Polyethylene Yarn Denier / Ends	8,400 / 16

Finish Fabric	English System		Metric System		ASTM Test F-1551
	Value	Units	Value	Units	
<i>Nominal Specification</i>					<i>Method</i>
Pile Height [Nominal]	1 1/4	In.	32	mm	D-5823
Face Weight	56	oz/yd ²	1,899	g/m ²	D-5848
Total Fabric Weight	157	oz/yd ²	5,323	g/m ²	D-5848
Primary Backing Weight	8	oz/yd ²	271	g/m ²	D-5848
Secondary Coating Weight	93	oz/yd ²	3,153	g/m ²	D-5848
Tuft Bind	>8	lbs.	>3.6	kg.	D-1335
Grab Tear Strength [Average]	>300	lbs.	>103	kg.	D-2256
Lead Content	<50	ppm	<50	ppm	F-2765
Total Yarn Linear Density	8,400	Denier	9,240	D-Tex	D-1577
Elongation to Break	>30	%	>30	%	D-5034
Yarn Breaking Strength	>20	lbs.	>9.1	kg.	D-5034
Yarn Melting Point	428	F°	220	C°	D-789
Stitch Rate	6.5	In.	2.56	cm	D-5793
Machine Gauge	3/8	In.	0.95	cm	D-5793
Flammability	TEST PASSED		TEST PASSED		D-2859
Water Permeability w/ Infill	>30	In./hr	>76.2	cm/hr	F-1551
Fiber Thickness [Primary/Secondary]	3.9	mils	100	microns	D-3218
Fabric Width	15	Ft.	4.6	M	None

3kb12

Note: Any change from the specified values is considered a special product that will require confirmation from manufacturing. All values are ± 5%

AstroTurf® has the right to modify technical specifications on the above-mentioned product. Delivered products can slightly differ from the technical data.

AstroTurf® guarantees the technical quality of the proposed article.



help@astroturf.com

www.astroturfusa.com

(800) 723-TURF



WE'VE GOT YOU COVERED



SUPERLAWN XTREME

Face Weight:
80 oz.

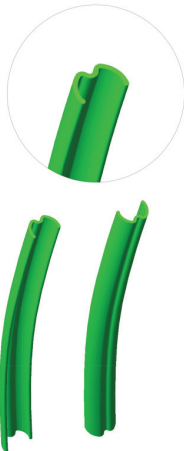
Pile Height:
2 1/8"

Color:
Spring Green, Blend

Thatch:
Brown

Backing:
DuraFlo

Fiber Type:
Omega



Fiber Type 100% Polyethylene

Fiber Mass	10800 denier 7300 denier (Root Zone)	12000 d tex 8100 d tex (Root Zone)	Omega TXT PE Thatch
-------------------	--	--	------------------------

Tufted Pile Height*	2.125 in	54 mm
----------------------------	----------	-------

Tufted Face Weight*	80 oz/yd ²	2713 g/m ²
----------------------------	-----------------------	-----------------------

Tufting Gauge	1/4
----------------------	-----

Primary Backing	7.0 oz/yd ²	237 g/m ²	Stabilized dual layered woven polypropylene
------------------------	------------------------	----------------------	---

Secondary Backing	10.0 oz/yd ²	339 g/m ²	DuraFlo
--------------------------	-------------------------	----------------------	---------

Non Woven Scrim	2.7 oz/yd ²	91.5 g/m ²
------------------------	------------------------	-----------------------

Total Weight*	99.7 oz/yd ²	3380 g/m ²
----------------------	-------------------------	-----------------------

Tufted Roll Width*	15 ft	4.57 m
---------------------------	-------	--------



SHINE BLOCK

Our goal is to not "outshine" the competition. Shine Block blade profiles reduce the reflective quality of the fiber allowing our grass to appear more like a healthy, well-trimmed, natural lawn.

* Specifications provided above are tufted measurements. Final measurements can change during backing processes. XGrass is not responsible for typing errors on specifications listed above.



XGRASS.COM | TOURGREENS.COM | VERSACOURT.COM
1224 RIVERBEND ROAD, DALTON, GA 30721 | 1.877.881.8477



PRODUCT DATA

PRODUCT NAME: NUTMEG LUSH (GF-LIT-R-ON)

Property	Value	Units	Description	ASTM
Pile Yarn Type			UV-Resistant Polyethylene	N/A
Yarn Structure	Field Green/Olive Green		Ridged Monofilament	N/A
Yarn Denier	10800	Denier		D1577
Yarn Structure	Nutmeg/Olive Green		Texturized Monofilament	N/A
Yarn Denier	5000	Denier		D1577
Pile Height	1.625	Inches		D5823
Pile Weight	65	OZ/YD ²		D5848
Primary Backing Weight	>7	OZ/YD ²	Dual Layer Woven Polypropylene	D5848
Secondary Backing Weight	22	OZ/YD ²	Dual System Permeable Polyurethane	D5848
Total Weight	94	OZ/YD ²		D5848
Stitch Gauge	3/8 Inch Centers			D5793
Tuft Bind	>9	LBS/Force		D1335
Total Infill	2 to 3 Per Square Foot	LBS		N/A

* N.B. Variation of +/- 5% on pile height is within normal manufacturing tolerances

EasyTurf reserves the right to modify technical specifications on the above-mentioned product.

Delivered products tolerances can slightly differ from the technical data.

EasyTurf guarantees the technical quality of the proposed article.

Manufactured by



THE ULTIMATE
SURFACE EXPERIENCE

[Contractor’s Letterhead]

[Insert Date]

Ms. Brenda Allen
Chief Contracting Officer
District of Columbia Department of General Services
2000 14th Street, NW, 8th Floor
Washington, DC 20009

Reference: Request for Proposal DCAM-17-CS-0085
Fort Davis Playground and Splash Pad

Dear Ms. Allen:

On behalf of [INSERT NAME OF BIDDER] (the “Bidder”), I am pleased to submit this bid in response to the Department of General Services’ (the “Department” or “DGS”) Request for Proposal (the “RFP”) for the Fort Davis Playground and Splash Pad. The Bidder has reviewed the RFP and the attachments thereto, any addenda thereto, and the proposed Form of Contract (collectively, the “Bid Documents” or “Contract Documents”) and has conducted such due diligence and analysis as the Bidder, in its sole judgment, has deemed necessary in order to submit its bid in response to the RFP. The Bidder’s bid and the Lump Sum Price are based on the Bid Documents as issued and assume no material alteration of the terms of the Bid Documents. (Collectively, the bid and the Lump Sum Price are referred to as the “Bidder’s Bid”.)

The Bidder’s Bid is as follows:

CLIN	DESCRIPTION	Lump Sum Price
001	Contractor shall provide all labor, tools, equipment and materials necessary to perform the Design-Build for the Fort Davis Playground and Splash Pad.	
001A	Design Fee - The Design Fee should cover all design and engineering costs/fees necessary to complete design documents and/or performance specifications necessary for required permits and bidding.	\$ _____
001B	Preconstruction Fee - The Preconstruction Fee should cover all costs/fees necessary to develop the lump sum price, including, but not limited to, working with the Department as the design is finalized; and bidding the design documents with trade subcontractors to develop the lump sum price.	\$ _____
001C	Design-Build Fee - The Design-Build Fee should cover all costs/fees necessary to oversee and manage the construction of the work and should include the cost of overhead, profit and general conditions.	\$ _____
001D	Construction Fee - The Construction Fee should cover all cost/fees necessary to fully complete the construction of the project.	\$ _____
	Lump Sum Price	\$ _____
001E	Add Alternate – Walkway using Asphalt.	\$ _____

LUMP SUM PRICE IN WORDS:

The Bidder shall submit a completed Price Breakdown Form (Exhibit 1) for each package, providing the price for each Division Component. The sum of all the prices for each Division Component must equal the Lump Sum Price above. In the event of discrepancies between or among the Lump Sum Price and the Price Breakdown of each Division Component, the Lump Sum Price shall control.

The Bidder's Bid is based on and subject to the following conditions:

1. The Bidder agrees to hold its bid open for a period of at least one hundred twenty (120) days after the RFP closing date.
2. Assuming the Bidder is selected by the Department and subject only to the changes requested in paragraph 5, the Bidder agrees to enter into a contract with the Department on the terms and conditions described in the Bid Documents within ten (10) days of the notice of the award.
3. Both the Bidder and the undersigned represent and warrant that the undersigned has the full legal authority to submit this bid form and bind the Bidder to the terms of the Bidder's bid. The Bidder further represents and warrants that no further action or approval must be obtained by the Bidder in order to authorize the terms of the Bidder's bid.
4. The Bidder and its principal team members hereby represent and warrant that they have not: (i) colluded with any other group or person that is submitting a bid in response to the RFP in order to fix or set prices; (ii) acted in such a manner so as to discourage any other group or person from submitting a bid in response to the RFP; or (iii) otherwise engaged in conduct that would violate applicable anti-trust law.
5. The Bidder hereby certifies that neither it nor any of its team members have entered into any agreement (written or oral) that would prohibit any contractor, subcontractor or subconsultant that is certified by the District of Columbia Office of Department of Small and Local Business Enterprises as a Local, Small, Resident Owned or Disadvantaged Business Enterprise (collectively, "LSDBE Certified Companies") from participating in the work if another company is awarded the contract.
6. This Form of Offer Letter and Bid Form are being submitted on behalf of [INSERT FULL LEGAL NAME, TYPE OF ORGANIZATION, AND STATE OF FORMATION FOR THE BIDDER].

Sincerely,

Company: _____
Name: _____
Title: _____
Date: _____
Signature: _____

Exhibit 1 - Price Breakdown Form

Fort Davis Playground and Splash Pad		
DIVISION NO.	DESCRIPTION	DIVISION COST
Div. 01	General Requirements	
Div. 02	Existing Conditions (incl. abatement/demo)	
Div. 03	Concrete	
Div. 04	Masonry	
Div. 05	Metals	
Div. 06	Woods and Plastics	
Div. 07	Thermal and Moisture Protection	
Div. 08	Openings	
Div. 09	Finishes	
Div. 10	Specialties	
Div. 11	Equipment	
Div. 12	Furnishings	
Div. 13	Special Construction	
Div. 14	Conveying Systems	
Div. 21	Fire Suppressions	
Div. 22	Plumbing	
Div. 23	Heating, Ventilation and Air Conditioning	
Div. 26	Electrical	
Div. 27	Communications	
Div. 28	Electronic Safety and Security	
Div. 31	Earthwork	
Div. 32	Exterior Improvements	
Div. 33	Utilities	
	Lump Sum Price:	\$ _____

DCAM-17-CS-0085 Fort Davis Playground and Splash Pad
PAST PERFORMANCE EVALUATION FORM
(Check appropriate box)

OFFEROR _____

Performance Elements	Excellent	Good	Acceptable	Poor	Unacceptable
Quality of Services/ Work					
Timeliness of Performance					
Cost Control					
Business Relations					
Customer Satisfaction					

1. Name and Title of Evaluator: _____

2. Signature of Evaluator: _____

3. Name of Organization: _____

4. Telephone Number of Evaluator: _____

E-mail address of Evaluator: _____

5. State type of service received: _____

6. State Contract Number, Amount and Period of Performance _____

7. Remarks on Excellent Performance: Provide data supporting this observation. Continue on separate sheet if needed)

8. Remarks on unacceptable performance: Provide data supporting this observation. (Continue on separate sheet if needed)

Please submit completed evaluation to mia.vawter@dc.gov

RATING GUIDELINES

Summarize Contractor performance in each of the rating areas. Assign each area a rating of 0 (Unacceptable), 1 (Poor), 2 (Acceptable), 3 (Good), 4(Excellent), or ++ (Plus). Use the following instructions for guidance in making these evaluations.

	Quality Product/Service	Cost Control	Timeless of Performance	Business Relations
	<ul style="list-style-type: none"> -Compliance with contract requirements -Accuracy of reports -Appropriateness of personnel -Technical excellence 	<ul style="list-style-type: none"> -Within budget (over/ under target costs) -Current, accurate, and complete billings -Relationship of negated costs to actual -Cost efficiencies -Change order issue 	<ul style="list-style-type: none"> -Meet Interim milestones -Reliable -Responsive to technical directions -Completed on time, including wrap-up and contract administration -No liquidated damages assessed 	<ul style="list-style-type: none"> -Effective management -Businesslike correspondence -Responsive to contract requirements -Prompt notification of contract problems -Reasonable/cooperative -Flexible -Pro-active -effective contractor recommended solutions -Effective snail/small disadvantaged business Subcontracting program
0. Zero	Nonconformances are comprises the achievement of contract requirements, despite use of Agency resources	Cost issues are comprising performance of contract requirements.	Delays are comprising the achievement of contract requirements, Despite use of Agency resources.	Response to inquiries, technical/ service/administrative issues is not effective and responsive.
1. Unacceptable	Nonconformances require major Agency resources to ensure achievement of contract requirements.	Cost issues require major Agency resources to ensure achievement of contract requirements.	Delays require major Agency resources to ensure achievement of contract requirements.	response to inquiries, technical/ service/administrative issues is marginally effective and responsive.
2. Poor	Nonconformances require minor Agency resources to ensure achievement of contract requirements.	Costs issues require minor Agency resources to ensure achievement of contract requirements.	Delays require minor Agency resources to ensure achievement of contract requirements.	Responses to inquiries, technical/ service/administrative issues is somewhat effective and responsive.
3. Acceptable	Nonconformances do not impact achievement of contract requirements.	Cost issues do not impact achievement of contract requirements.	Delays do not impact achievement of contract requirements.	Responses to inquires, technical/ service/administrative issues is usually effective and responsive.
4. Good	There are no quality problems.	There are no cost issues.	There are not delays.	Responses to inquiries, technical/ service/administrative issues is effective and responsive,
5. Excellent	The contractor has demonstrated an exceptional performance level in some or all of the above categories.			

GOVERNMENT OF THE DISTRICT OF COLUMBIA

Office of the Chief Financial Officer

Office of Tax and Revenue



TAX CERTIFICATION AFFIDAVIT

THIS AFFIDAVIT IS TO BE COMPLETED ONLY BY THOSE WHO ARE REGISTERED TO CONDUCT BUSINESS IN THE DISTRICT OF COLUMBIA.

Date

**Authorized Agent
Name of Organization/Entity
Business Address (include zip code)
Business Phone Number**

**Authorized Agent
Principal Officer Name and Title
Square and Lot Information
Federal Identification Number
Contract Number
Unemployment Insurance Account No.**

I hereby authorize the District of Columbia, Office of the Chief Financial Officer, Office of Tax and Revenue to release my tax information to an authorized representative of the District of Columbia agency with which I am seeking to enter into a contractual relationship. I understand that the information released will be limited to whether or not I am in compliance with the District of Columbia tax laws and regulations solely for the purpose of determining my eligibility to enter into a contractual relationship with a District of Columbia agency. I further authorize that this consent be valid for one year from the date of this authorization.

I hereby certify that I am in compliance with the applicable tax filing and payment requirements of the District of Columbia. The Office of Tax and Revenue is hereby authorized to verify the above information with the appropriate government authorities.

Signature of Authorizing Agent

Title

The penalty for making false statement is a fine not to exceed \$5,000.00, imprisonment for not more than 180 days, or both, as prescribed by D.C. Official Code §47-4106.

General Decision Number: DC160002 07/08/2016 DC2

Superseded General Decision Number: DC20150002

State: District of Columbia

Construction Type: Building

County: District of Columbia Statewide.

BUILDING CONSTRUCTION PROJECTS (does not include single family homes or apartments up to and including 4 stories).

Note: Under Executive Order (EO) 13658, an hourly minimum wage of \$10.15 for calendar year 2016 applies to all contracts subject to the Davis-Bacon Act for which the solicitation was issued on or after January 1, 2015. If this contract is covered by the EO, the contractor must pay all workers in any classification listed on this wage determination at least \$10.15 (or the applicable wage rate listed on this wage determination, if it is higher) for all hours spent performing on the contract in calendar year 2016. The EO minimum wage rate will be adjusted annually. Additional information on contractor requirements and worker protections under the EO is available at www.dol.gov/whd/govcontracts.

Modification Number	Publication Date
0	01/08/2016
1	01/15/2016
2	02/19/2016
3	05/20/2016
4	06/03/2016
5	06/10/2016
6	06/17/2016
7	07/01/2016
8	07/08/2016

ASBE0024-007 10/01/2015

	Rates	Fringes
ASBESTOS WORKER/HEAT & FROST INSULATOR.....	\$ 34.33	13.92

Includes the application of all insulating materials, protective coverings, coatings and finishes to all types of mechanical systems

ASBE0024-008 10/01/2015

	Rates	Fringes
ASBESTOS WORKER: HAZARDOUS MATERIAL HANDLER.....	\$ 21.61	5.54

Includes preparation, wetting, stripping, removal, scrapping, vacuuming, bagging and disposing of all insulation materials, whether they contain asbestos or not, from mechanical systems

ASBE0024-014 10/01/2015

	Rates	Fringes
FIRESTOPPER.....	\$ 26.81	5.98

Includes the application of materials or devices within or around penetrations and openings in all rated wall or floor assemblies, in order to prevent the pasage of fire, smoke of other gases. The application includes all components involved in creating the rated barrier at perimeter slab edges and exterior cavities, the head of gypsum board or concrete walls, joints between rated wall or floor components, sealing of penetrating items and blank openings.

BRDC0001-002 05/03/2015

	Rates	Fringes
BRICKLAYER.....	\$ 30.36	9.69

CARP0177-003 01/01/2016

	Rates	Fringes
CARPENTER, Includes Drywall Hanging, Form Work, and Soft Floor Laying-Carpet.....	\$ 27.56	9.18

CARP0179-001 05/01/2016

	Rates	Fringes
PILEDRIVERMAN.....	\$ 29.19	9.45

CARP1548-001 04/01/2015

	Rates	Fringes
MILLWRIGHT.....	\$ 31.99	9.28

ELEC0026-016 06/06/2016

	Rates	Fringes
ELECTRICIAN, Includes Installation of HVAC/Temperature Controls.....	\$ 43.70	16.06

ELEC0026-017 09/01/2014

	Rates	Fringes
ELECTRICAL INSTALLER (Sound & Communication Systems).....	\$ 27.05	8.58

SCOPE OF WORK: Includes low voltage construction, installation, maintenance and removal of teledata facilities (voice, data and video) including outside plant, telephone and data inside wire, interconnect, terminal equipment, central offices, PABX, fiber optic cable and equipment, railroad communications, micro waves, VSAT, bypass, CATV, WAN (Wide area networks), LAN (Local area networks) and ISDN (Integrated systems digital network).

WORK EXCLUDED: The installation of computer systems in industrial applications such as assembly lines, robotics and computer controller manufacturing systems. The installation of conduit and/or raceways shall be installed by Inside Wiremen. On sites where there is no Inside Wireman employed, the Teledata Technician may install raceway or conduit not greater than 10 feet. Fire alarm work is excluded on all new construction sites or wherever the fire alarm system is installed in conduit. All HVAC control work.

ELEV0010-001 01/01/2016

	Rates	Fringes
ELEVATOR MECHANIC.....	\$ 41.90	29.985+a+b

a. PAID HOLIDAYS: New Year's Day, Memorial Day, Independence Day, Labor Day, Veterans' Day, Thanksgiving Day, Christmas Day and the Friday after Thanksgiving.

b. VACATIONS: Employer contributes 8% of basic hourly rate for 5 years or more of service; 6% of basic hourly rate for 6 months to 5 years of service as vacation pay credit.

IRON0005-005 06/01/2016

	Rates	Fringes
IRONWORKER, STRUCTURAL AND ORNAMENTAL.....	\$ 30.85	19.435

IRON0201-006 05/01/2016

	Rates	Fringes
IRONWORKER, REINFORCING.....	\$ 27.90	19.13

LAB00657-015 06/01/2015

	Rates	Fringes
LABORER: Skilled.....	\$ 22.63	7.31

FOOTNOTE: Potmen, power tool operator, small machine operator, signalmen, laser beam operator, waterproofer, open caisson, test pit, underpinning, pier hole and ditches, ladders and all work associated with lagging that is not expressly stated, strippers, operator of hand derricks, vibrator operators, pipe layers, or tile layers, operators of jackhammers, paving breakers, spaders or any machine that does the same general type of work, carpenter tenders, scaffold builders, operators of towmasters, scootcretes, buggymobiles and other machines of similar character, operators of tampers and rammers and other machines that do the same general type of work, whether powered by air, electric or gasoline, builders of trestle scaffolds over one tier high and sand blasters, power and chain saw operators used in clearing, installers of well points, wagon drill operators, acetylene burners and licensed powdermen, stake jumper, demolition.

MARB0002-004 05/01/2016

	Rates	Fringes
MARBLE/STONE MASON.....	\$ 35.91	16.17

INCLUDING pointing, caulking and cleaning of All types of masonry, brick, stone and cement EXCEPT pointing, caulking, cleaning of existing masonry, brick, stone and cement (restoration work)

MARB0003-006 05/01/2016

	Rates	Fringes
TERRAZZO WORKER/SETTER.....	\$ 27.25	10.68

MARB0003-007 05/01/2016

	Rates	Fringes
TERRAZZO FINISHER.....	\$ 22.46	9.75

MARB0003-008 05/01/2016

	Rates	Fringes
TILE SETTER.....	\$ 27.25	10.68

MARB0003-009 05/01/2016

	Rates	Fringes
TILE FINISHER.....	\$ 22.46	9.75

PAIN0051-014 06/01/2014

	Rates	Fringes
GLAZIER		
Glazing Contracts \$2 million and under.....	\$ 24.77	9.85
Glazing Contracts over \$2 million.....	\$ 28.61	9.85

PAIN0051-015 06/01/2014

	Rates	Fringes
PAINTER		
Brush, Roller, Spray and Drywall Finisher.....	\$ 24.89	9.05

PLAS0891-005 07/01/2013

	Rates	Fringes
PLASTERER.....	\$ 28.33	5.85

PLAS0891-006 02/01/2014

	Rates	Fringes
CEMENT MASON/CONCRETE FINISHER...	\$ 27.15	9.61

PLAS0891-007 08/01/2015

	Rates	Fringes
FIREPROOFER		
Handler.....	\$ 16.50	4.59
Mixer/Pump.....	\$ 18.50	4.59
Sprayer.....	\$ 23.00	4.59

Spraying of all Fireproofing materials. Hand application of Fireproofing materials. This includes wet or dry, hard or soft. Intumescent fireproofing and refraction work, including, but not limited to, all steel beams, columns, metal decks, vessels, floors, roofs, where ever fireproofing is required. Plus any installation of thermal and acoustical insulation. All that encompasses setting up for Fireproofing, and taken down. Removal of fireproofing materials and protection. Mixing of all materials either by hand or machine following manufactures standards.

PLUM0005-010 08/01/2015

	Rates	Fringes
PLUMBER.....	\$ 39.67	16.60+a

a. PAID HOLIDAYS: Labor Day, Veterans' Day, Thanksgiving Day and the day after Thanksgiving, Christmas Day, New Year's Day, Martin Luther King's Birthday, Memorial Day and the Fourth of July.

PLUM0602-008 08/01/2015

	Rates	Fringes
PIPEFITTER, Includes HVAC Pipe Installation.....	\$ 38.89	19.97+a

a. PAID HOLIDAYS: New Year's Day, Martin Luther King's Birthday, Memorial Day, Independence Day, Labor Day, Veterans' Day, Thanksgiving Day and the day after Thanksgiving and Christmas Day.

ROOF0030-016 05/01/2016

	Rates	Fringes
ROOFER.....	\$ 28.75	11.74

SFDC0669-002 04/01/2016

	Rates	Fringes
SPRINKLER FITTER (Fire Sprinklers).....	\$ 33.40	18.52

* SHEE0100-015 07/01/2016

	Rates	Fringes
SHEET METAL WORKER (Including		

HVAC Duct Installation).....\$ 40.27 17.24+a

a. PAID HOLIDAYS: New Year's Day, Martin Luther King's Birthday, Memorial Day, Independence Day, Labor Day, Veterans Day, Thanksgiving Day and Christmas Day

SUDC2009-003 05/19/2009

	Rates	Fringes
LABORER: Common or General.....	\$ 13.04	2.80
LABORER: Mason Tender - Cement/Concrete.....	\$ 15.40	2.85

LABORER: Mason Tender for pointing, caulking, cleaning of existing masonry, brick, stone and cement structures (restoration work); excludes pointing, caulking and cleaning of new or replacement masonry, brick, stone and cement.....\$ 11.67

POINTER, CAULKER, CLEANER, Includes pointing, caulking, cleaning of existing masonry, brick, stone and cement structures (restoration work); excludes pointing, caulking, cleaning of new or replacement masonry, brick, stone or cement.....\$ 18.88

WELDERS - Receive rate prescribed for craft performing operation to which welding is incidental.

=====
Unlisted classifications needed for work not included within the scope of the classifications listed may be added after award only as provided in the labor standards contract clauses (29CFR 5.5 (a) (1) (ii)).

The body of each wage determination lists the classification and wage rates that have been found to be prevailing for the cited type(s) of construction in the area covered by the wage determination. The classifications are listed in alphabetical order of "identifiers" that indicate whether the particular rate is a union rate (current union negotiated rate for local), a survey rate (weighted average rate) or a union average rate (weighted union average rate).

Union Rate Identifiers

A four letter classification abbreviation identifier enclosed

in dotted lines beginning with characters other than "SU" or "UAVG" denotes that the union classification and rate were prevailing for that classification in the survey. Example: PLUM0198-005 07/01/2014. PLUM is an abbreviation identifier of the union which prevailed in the survey for this classification, which in this example would be Plumbers. 0198 indicates the local union number or district council number where applicable, i.e., Plumbers Local 0198. The next number, 005 in the example, is an internal number used in processing the wage determination. 07/01/2014 is the effective date of the most current negotiated rate, which in this example is July 1, 2014.

Union prevailing wage rates are updated to reflect all rate changes in the collective bargaining agreement (CBA) governing this classification and rate.

Survey Rate Identifiers

Classifications listed under the "SU" identifier indicate that no one rate prevailed for this classification in the survey and the published rate is derived by computing a weighted average rate based on all the rates reported in the survey for that classification. As this weighted average rate includes all rates reported in the survey, it may include both union and non-union rates. Example: SULA2012-007 5/13/2014. SU indicates the rates are survey rates based on a weighted average calculation of rates and are not majority rates. LA indicates the State of Louisiana. 2012 is the year of survey on which these classifications and rates are based. The next number, 007 in the example, is an internal number used in producing the wage determination. 5/13/2014 indicates the survey completion date for the classifications and rates under that identifier.

Survey wage rates are not updated and remain in effect until a new survey is conducted.

Union Average Rate Identifiers

Classification(s) listed under the UAVG identifier indicate that no single majority rate prevailed for those classifications; however, 100% of the data reported for the classifications was union data. EXAMPLE: UAVG-OH-0010 08/29/2014. UAVG indicates that the rate is a weighted union average rate. OH indicates the state. The next number, 0010 in the example, is an internal number used in producing the wage determination. 08/29/2014 indicates the survey completion date for the classifications and rates under that identifier.

A UAVG rate will be updated once a year, usually in January of each year, to reflect a weighted average of the current negotiated/CBA rate of the union locals from which the rate is based.

WAGE DETERMINATION APPEALS PROCESS

1.) Has there been an initial decision in the matter? This can be:

- * an existing published wage determination
- * a survey underlying a wage determination

- * a Wage and Hour Division letter setting forth a position on a wage determination matter
- * a conformance (additional classification and rate) ruling

On survey related matters, initial contact, including requests for summaries of surveys, should be with the Wage and Hour Regional Office for the area in which the survey was conducted because those Regional Offices have responsibility for the Davis-Bacon survey program. If the response from this initial contact is not satisfactory, then the process described in 2.) and 3.) should be followed.

With regard to any other matter not yet ripe for the formal process described here, initial contact should be with the Branch of Construction Wage Determinations. Write to:

Branch of Construction Wage Determinations
 Wage and Hour Division
 U.S. Department of Labor
 200 Constitution Avenue, N.W.
 Washington, DC 20210

2.) If the answer to the question in 1.) is yes, then an interested party (those affected by the action) can request review and reconsideration from the Wage and Hour Administrator (See 29 CFR Part 1.8 and 29 CFR Part 7). Write to:

Wage and Hour Administrator
 U.S. Department of Labor
 200 Constitution Avenue, N.W.
 Washington, DC 20210

The request should be accompanied by a full statement of the interested party's position and by any information (wage payment data, project description, area practice material, etc.) that the requestor considers relevant to the issue.

3.) If the decision of the Administrator is not favorable, an interested party may appeal directly to the Administrative Review Board (formerly the Wage Appeals Board). Write to:

Administrative Review Board
 U.S. Department of Labor
 200 Constitution Avenue, N.W.
 Washington, DC 20210

4.) All decisions by the Administrative Review Board are final.

=====

END OF GENERAL DECISION

Attachment F

GOVERNMENT OF THE DISTRICT OF COLUMBIA

PROPOSAL BOND (See Instructions on 2 nd page)	Date Bond Executed: (Must Not be Later Than Bid Opening Date)			
	PRINCIPAL (Legal Name and Address)			
TYPE OF ORGANIZATION ("X")				
<input type="checkbox"/> INDIVIDUAL		<input type="checkbox"/> PARTNERSHIP		
<input type="checkbox"/> JOINT VENTURE		<input type="checkbox"/> CORPORATION		
STATE OF INCORPORATION				
PENAL SUM OF BOND				
SURETY(IES) (Name(s) and Address(es))	AMOUNT NOT TO EXCEED			5% OF BID
	MILLION(S)	THOUSAND(S)	HUNDRED(S)	
PROPOSAL IDENTIFICATION				
PROPOSAL CLOSING DATE		REQUEST FOR PROPOSAL NO.		

KNOW ALL MEN BY THESE PRESENTS, that we, the Principal and Surety(ies) hereto are firmly bound to the District of Columbia Government, a municipal corporation, hereinafter called "the District", in the above penal sum for the payment of which we bind ourselves, our heirs, executors, and successors, jointly and severally; Provided that, where the Surety(ies) are corporations acting as co-sureties, we, the Sureties, bind ourselves in such sum "jointly" and "severally" only for the purpose of allowing a joint action against any or all of us, and for all other purposes each Surety bonds itself, jointly and severally with the Principal, for the payment of such sum only as is set forth opposite the name of such Surety, but if no limit of liability is indicated, the limit of liability shall be the full amount of the penal sum.

THE CONDITION OF THIS OBLIGATION IS SUCH that whereas the Principal has submitted the bid identified above. **NOW THEREFORE**, if the Principal shall not withdraw said bid within the period specified therein after the receipt of the same, or, no period be specified, within ninety (90) calendar days after said receipt, and shall within the period specified therefore, or, if no period be specified, within ten (10) calendar days after being called upon to do so, furnish Performance & Payment Bonds with good and sufficient surety, as may be required, for the faithful performance and proper fulfillment of the Contract, and for the protection of all persons supplying labor and material in the prosecution of the work provided for in such Contract or, in the event of withdrawal of said bid, within the period specified, or the failure to furnish such bond within the time specified, if the Principal shall pay the District the difference between the amount specified in said bid and the amount for which the District may procure the required work and/or supplies, if the latter amount be in excess of the former, then the above obligations shall be void and of no effect, otherwise to remain in full force and virtue. Each Surety executing this bond hereby agrees that its obligation shall not be impaired by extension(s) of time for acceptance of the bid that the Principal may grant to the District, notice of which extension(s) to Surety (ies) being hereby waived: Provided that such waiver of notice shall apply only with respect to extensions aggregating not more than sixty (60) calendar days in addition to the period originally allowed for acceptance of the bid.

IN WITNESS WHEREOF, the Principal and Surety (ies) have executed this bid bond and have affixed their seals on the date set forth above.

PRINCIPAL		
1. SIGNATURE	1. ATTEST	Corporate Seal
Seal		
Name & Title (typed)	Name & Title (typed)	
2. SIGNATURE	2. ATTEST	Corporate Seal
Seal		
Name & Title (typed)	Name & Title (typed)	

CERTIFICATE AS TO CORPORATION

I, _____, certify that I am _____, Secretary of the Corporation, named as Principal herein, that _____, who signed this bond, on behalf of the Principal, was then of said Corporation; that I know his signature, and his signature thereto is genuine; that said bond was duly signed and sealed for and in behalf of said Corporation by authority of its governing body, and is within the scope of its corporate powers.

Secretary of Corporation

SURETY(IES)

1. Name & Address (typed)	State of Inc.	Liability Limit	Corporate Seal
Signature of Attorney-in-Fact	Attest (Signature)		
Name & Address (typed)	Name & Address (typed)		
1. Name & Address (typed)	State of Inc.	Liability Limit	Corporate Seal
Signature of Attorney-in-Fact	Attest (Signature)		
Name & Address (typed)	Name & Address (typed)		

INSTRUCTIONS

1. This form shall be used whenever a bid guaranty is required in connection with construction, alteration and repair work.
2. Corporations name should appear exactly as it does on Corporate Seal and inserted in the space designated "Principal" on the face of this form. If practicable, bond should be signed by the President or Vice President; if signed by other official, evidence of authority must be furnished. Such evidence should be in the form of an Extract or Minutes of a Meeting of the Board of Directors, or Extract of Bylaws, certified by the Corporate Secretary, or Assistant Secretary and Corporate Seal affixed thereto. CERTIFICATE AS TO CORPORATION must be executed by Corporate Secretary or Assistant Secretary.
3. Corporations executing the bond as sureties must be among those appearing on the U. S. Treasury Department's List of approved sureties and must be acting within the limitations set forth therein, and shall be licensed by the Insurance Administration, Department of Consumer and Regulatory Affairs, to do business in the District of Columbia. The surety shall attach hereto an adequate Power-Of-Attorney for each representative signing the bond.
4. Corporations executing the bond shall affix their Corporate Seals. Individuals shall sign full first name, middle initial and last name opposite the word "seal", two witnesses must be supplied, and their addresses, under the word "attest". If executed in Maine or New Hampshire, an adhesive seal shall be affixed.
5. Names of all partners must be set out in body of bond form, with the recital that they are partners composing a firm, naming it, and all members of the firm shall execute the bond as individuals. Each signature must be witnessed by two persons and addresses supplied.