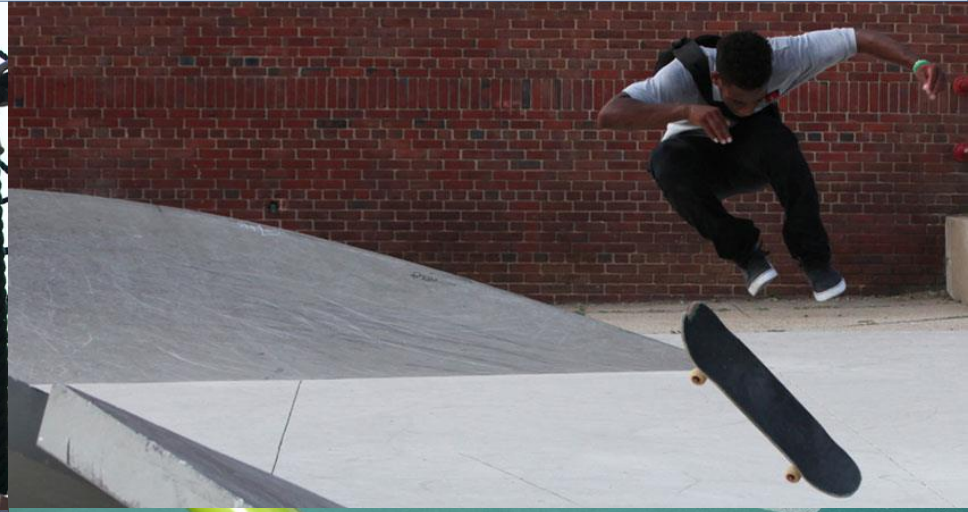


we elev★te



Agenda

1. Welcome and Introductions
 - Director Greer Gillis & Pedro Alfonso
2. Division Re-Introduction
 - Division Senior Staff
3. Introduction of CBE Inclusion Officer
 - Director Greer Gillis
4. Updates on Previous Requests
 - Jiyoung Park
5. Fiscal Year 2018 Highlights
 - Jiyoung Park
6. Open Discussion
7. Next Steps
8. Next Meeting
 - December 13, 2017
9. Division Engagement
 - Meet & Greet

CBE Inclusion Team Role

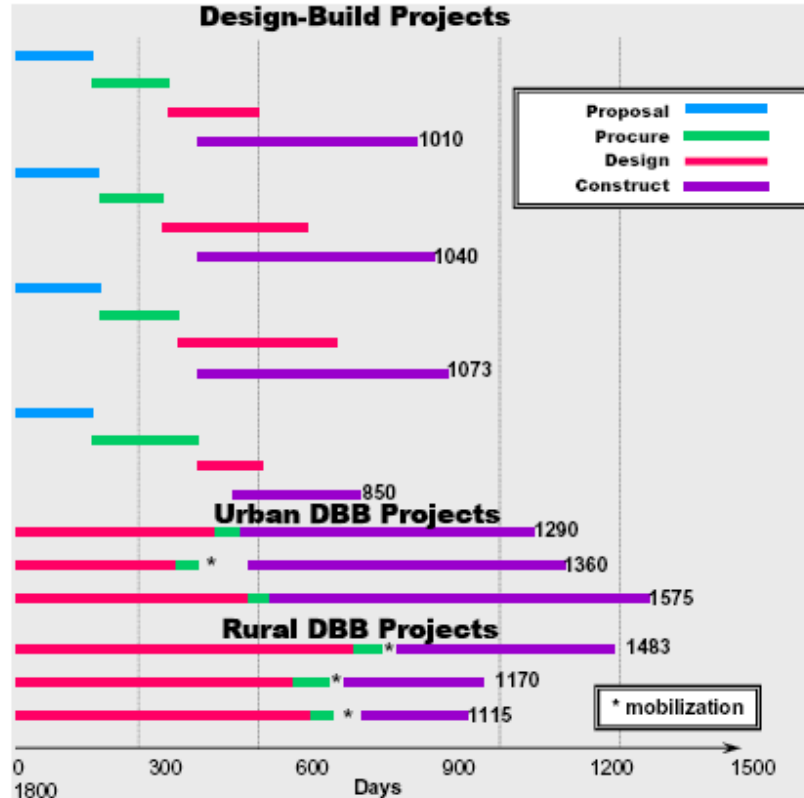
1. Coordinate DGS efforts to comply with CBE/SBE requirements
2. Partner with Contracting & Procurement Division and all DGS divisions to create and increase meaningful CBE/SBE opportunities across all areas of the agency's business
3. Work with partner agencies to build CBE/SBE capacity
4. Monitor compliance (subcontracting and workforce)
5. Serve as CBE Ombudsman
6. Build a best practice, comprehensive CBE/SBE program

FY 2018 CBE Inclusion Strategic Plan Highlights

- **Acquisition planning** – partner with DGS business units to identify more SBE carve-outs/set-aside opportunities
- **Analysis and reporting** – make sure we are maximizing opportunities throughout the year
- **Capacity building** – establish a mentor-protégé program pilot (solicit roundtable feedback on the program as we develop it); invite seasoned CBEs to be panelists to share lessons learned
- **Compliance monitoring** – including subcontracting requirements and monitoring for timely subcontractor payment, per the 7 days required by contract clauses
- **Outreach** – host quarterly sessions; post training webinars on DGS web site
- **Policy/program development** – investigate ways to reduce bonding hurdles, in partnership with DSLBD and ORM

Balancing Carve-outs with Design-Build Delivery

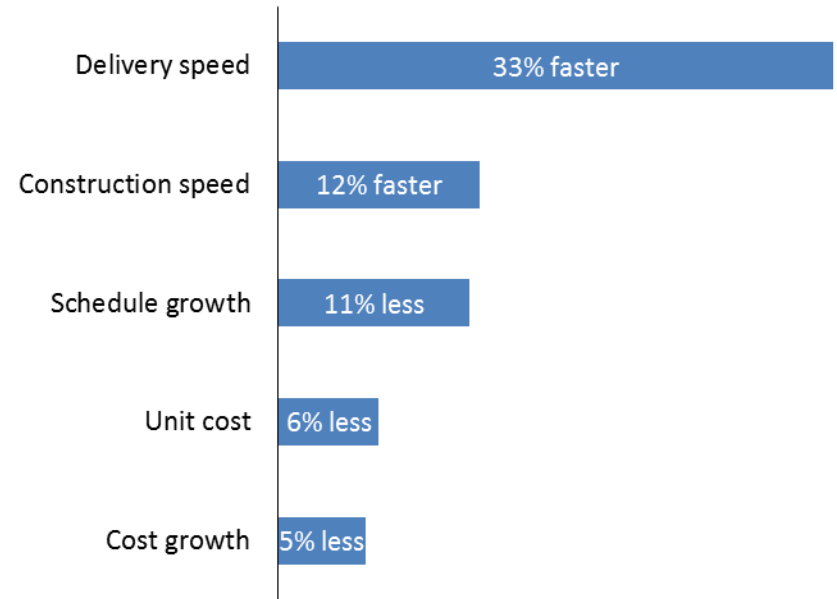
Exhibit II.1: Project Timelines for Comparable D-B and D-B-B Projects



Source: Arizona Department of Transportation

<https://www.fhwa.dot.gov/reports/designbuild/designbuild2.htm>

DB vs DBB Projects



^{vi} Konchar, M. & Sanvido, V. (1998). Comparison of U.S Project Delivery Systems. *Journal of Construction Engineering and Management*, Vol. 124, No. 6, November/December, 1998, 435-444.

Balancing Carve-outs with Design-Build Delivery

	Risk Allocation on Traditional Design-Bid-Build Delivery Method			Risk Allocation on Design Build Delivery Method	
	Owner	Designer	Contractor	Owner	Contractor
Errors and omissions during construction	X	X			X
Constructability	X	X			X
Establishment of project costs	X	X			X
Redesign if over budget	X	X			X
Permits and approvals	X	X		X	X
Quality control and quality assurance	X		X	X	X
Differing subsurface/hidden conditions	X			X	
Construction defects			X		X
Strike or labor disputes	X		X		X
Weather conditions	X		X		X
Unidentified utilities affecting site	X			X	X
Inflation	X		X		X
Third-party litigation	X		X		X
Warranty for facility performance	X		X		X
Environmental Risks	X			X	X

Source: <https://www.fhwa.dot.gov/reports/designbuild/designbuild2.htm>

FY 2018 Upcoming Opportunities

DGS FY 2018 Acquisition Plan and Forecast will be posted on the DGS web site in November:

https://dgsprocurement.dc.gov/acquisition_plans.aspx

Check regularly for updates throughout the year.

Check the DGS solicitations page regularly and subscribe to the RSS feed:

<https://dgs.dc.gov/page/dgs-solicitations>

Select FY 2018 Upcoming Opportunities*

Construction Related Opportunities:

- **MPD General Improvements**
- **FEMS General Improvements**
- **DPR ADA Compliance**
- **Athletic Fields and Park Improvements**
- **Design-Build Services: Petworth Rec Center Playground**

**Projects may change based on client agency needs. Any updates to opportunities will be posted on the DGS website at dgs.dc.gov.*

Select FY 2018 Upcoming Opportunities*

Goods and Services Related Opportunities:

- **Tree Maintenance**
- **On-Call Landscaping**
- **Site Beautification at Multiple Locations**
- **Lighting Retrofits**
- **Summer Youth Program Employment Management**

**Projects may change based on client agency needs. Any updates to opportunities will be posted on the DGS website at dgs.dc.gov.*

Contact Information

Jiyoung Park
CBE Inclusion Officer
jiyoung.park@dc.gov
202-671-1326

Olivia Warren
Program Manager
olivia.warren@dc.gov
202-698-7780

Get ***Social*** with us on Facebook & Twitter Today!



Follow **@DCDGS**



Become a Fan **@DC Department of General Services**