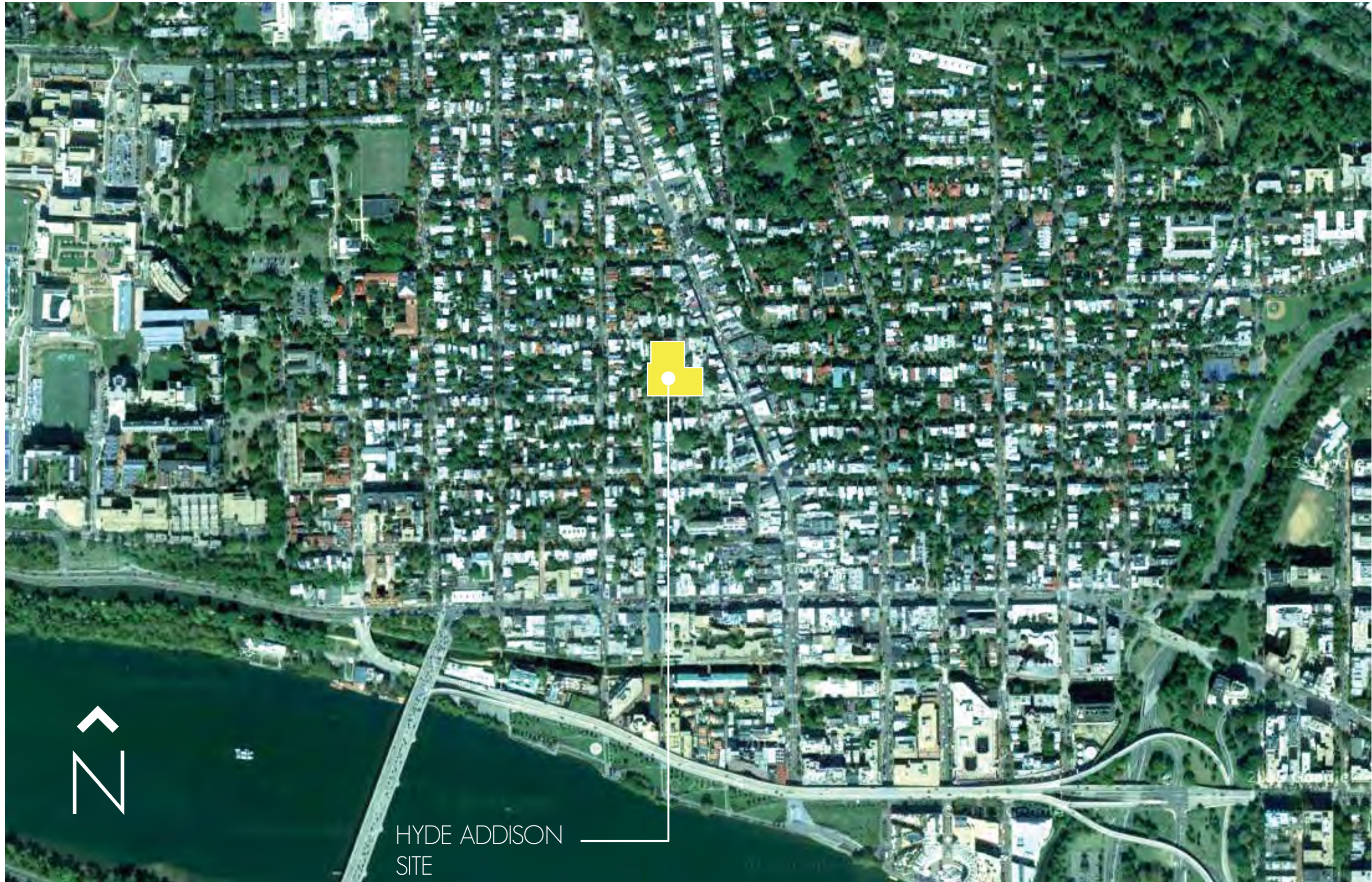
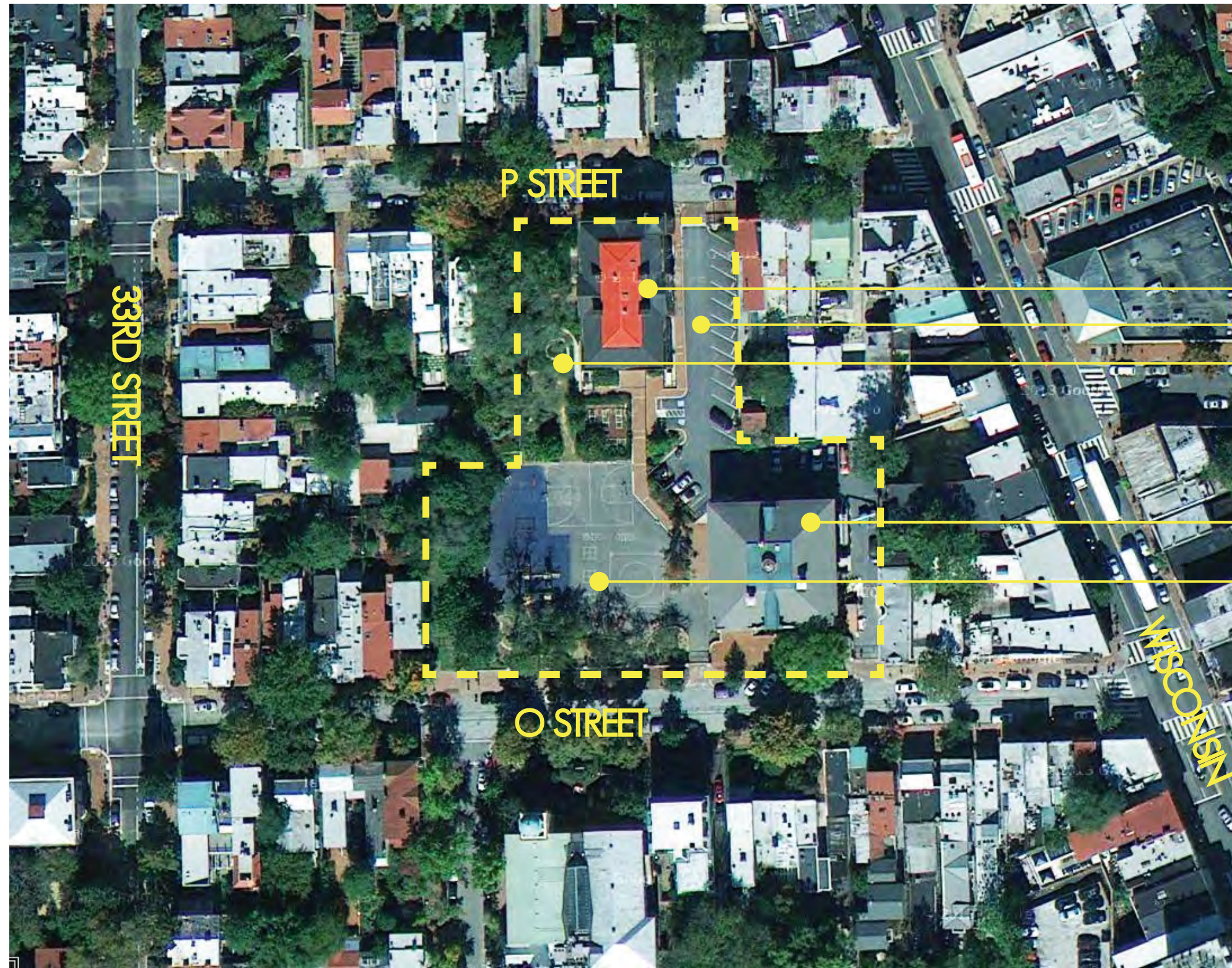


# ADDITION TO HYDE ADDISON





33RD STREET

P STREET

O STREET

WISCONSIN AVENUE

- ADDISON
- EXISTING PARKING
- EXISTING MINI AMPITHEATRE
  
- HYDE
- EXISTING ASPHALT PLAY COURT





VIEW KEY MAP



1



2



3



4



5



6



7



8



9



10

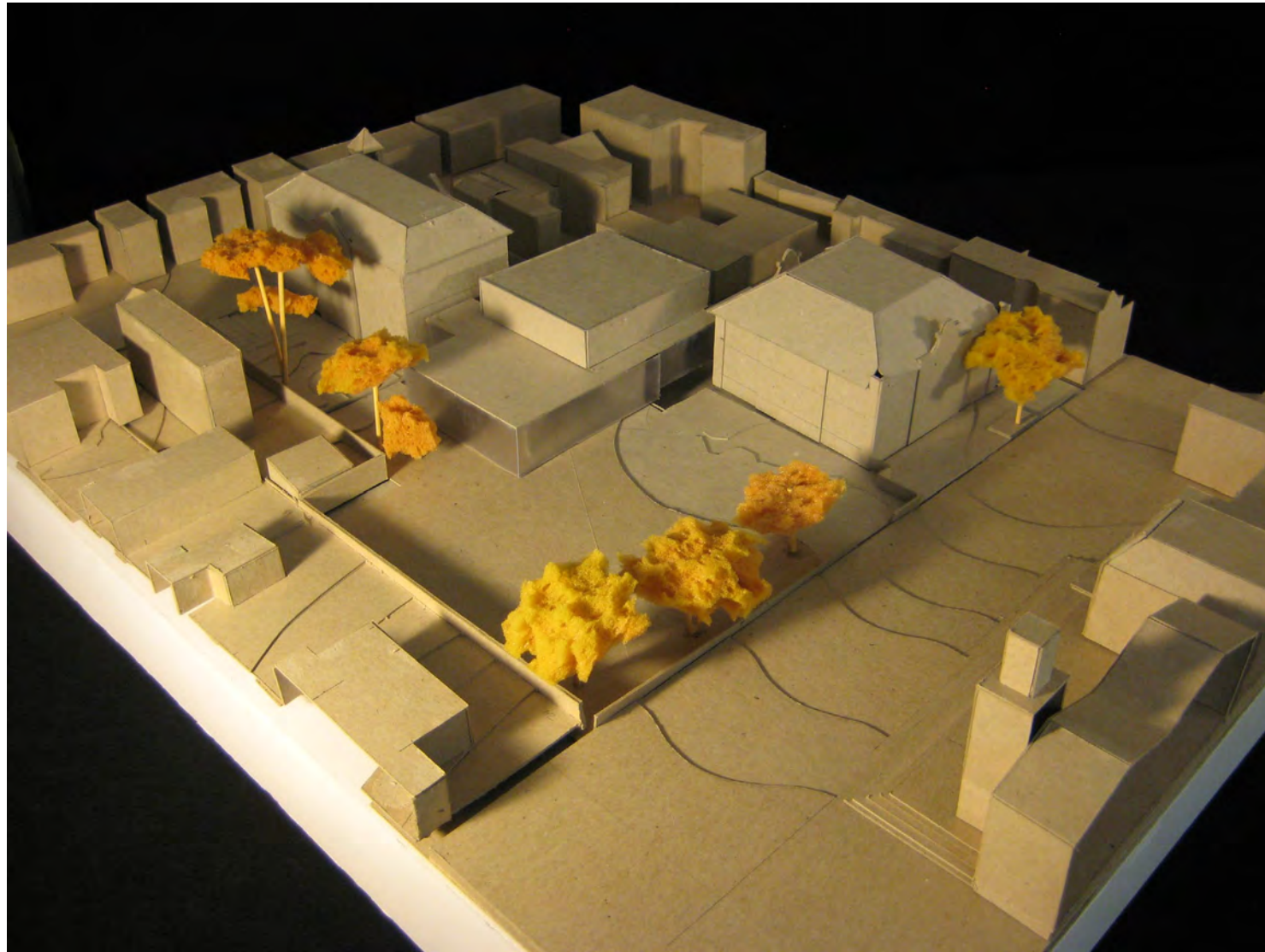


11



12

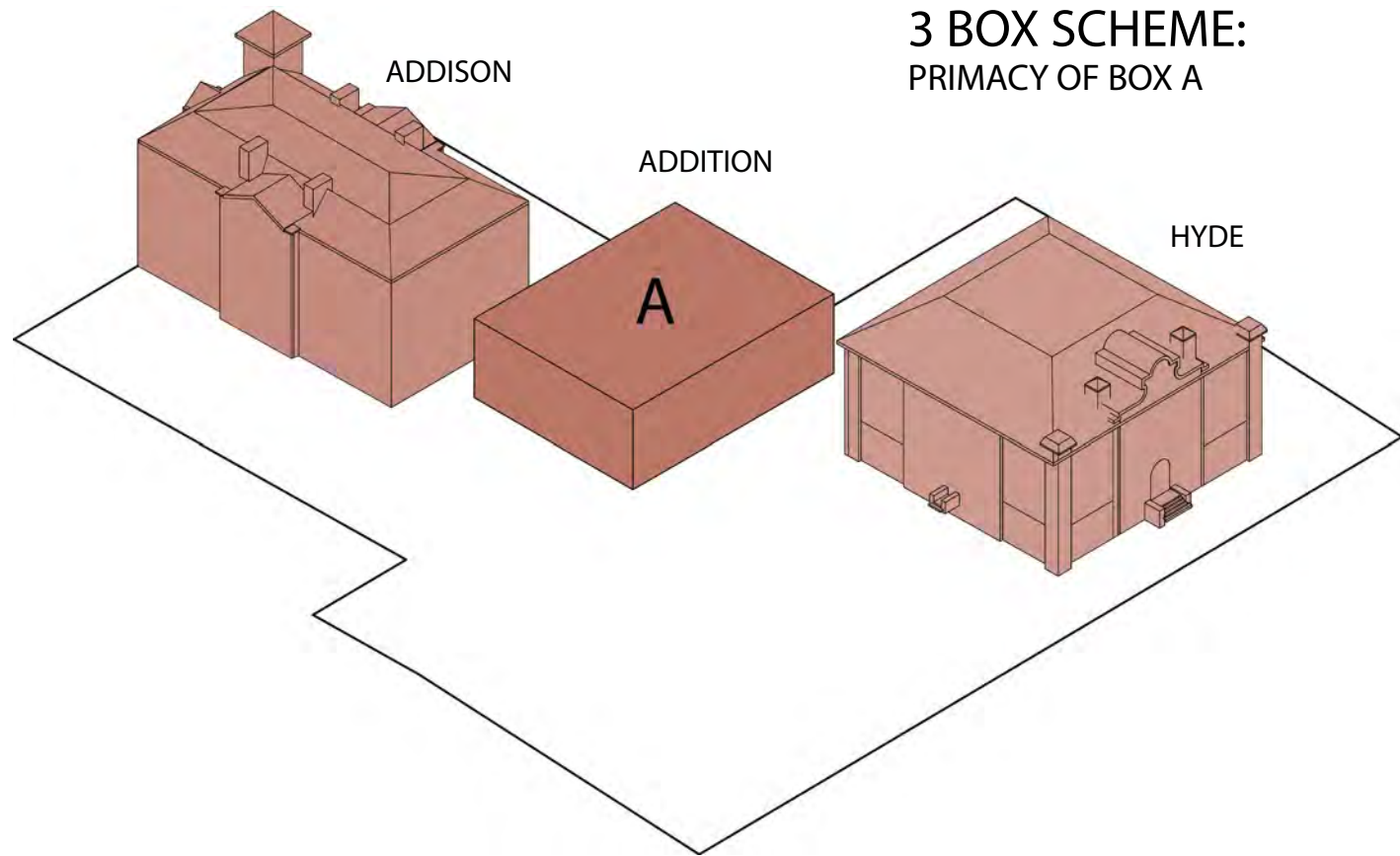
MASSING AND LOCATION AS DIRECTED BY OGB



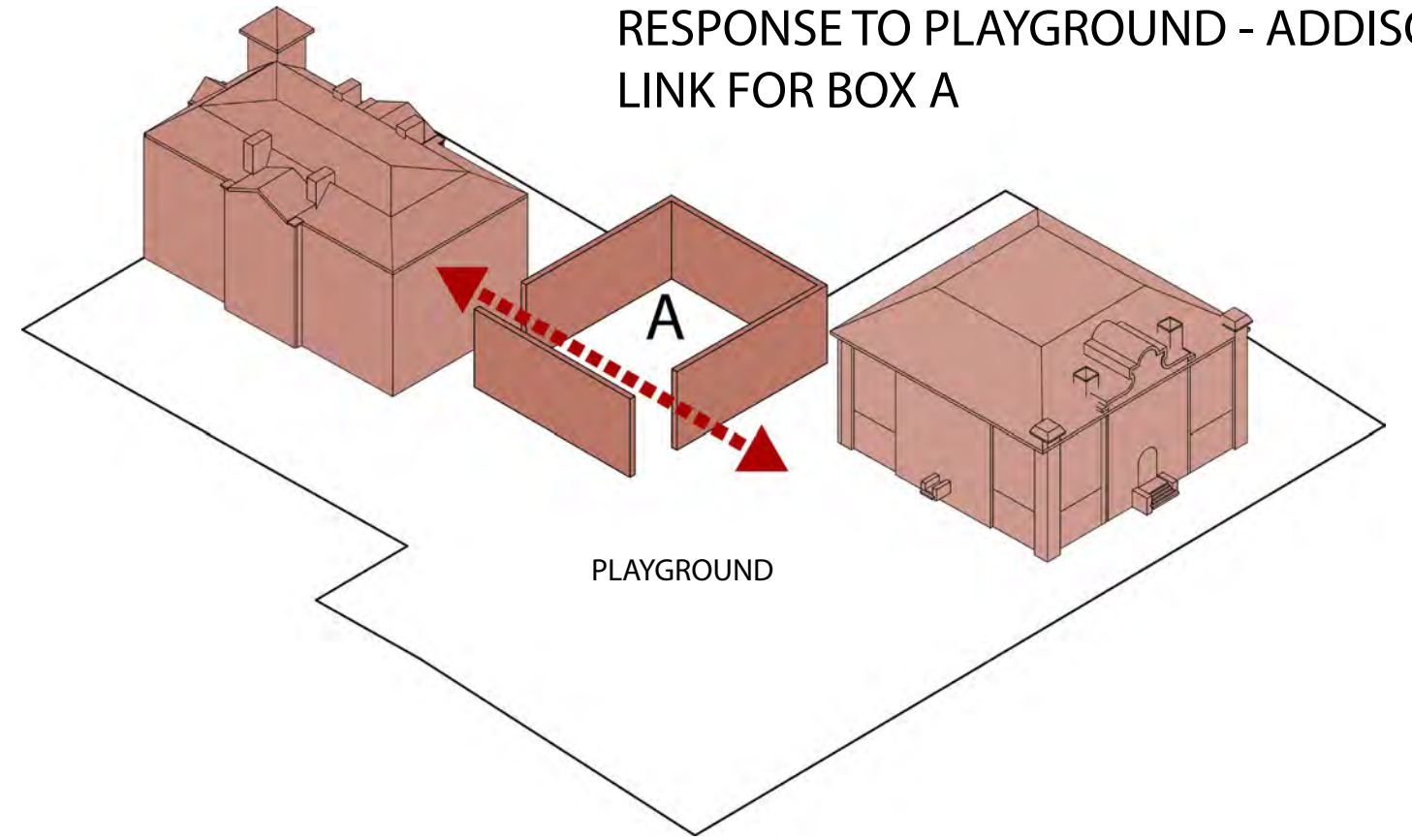
VIEW FROM SOUTH WEST CORNER



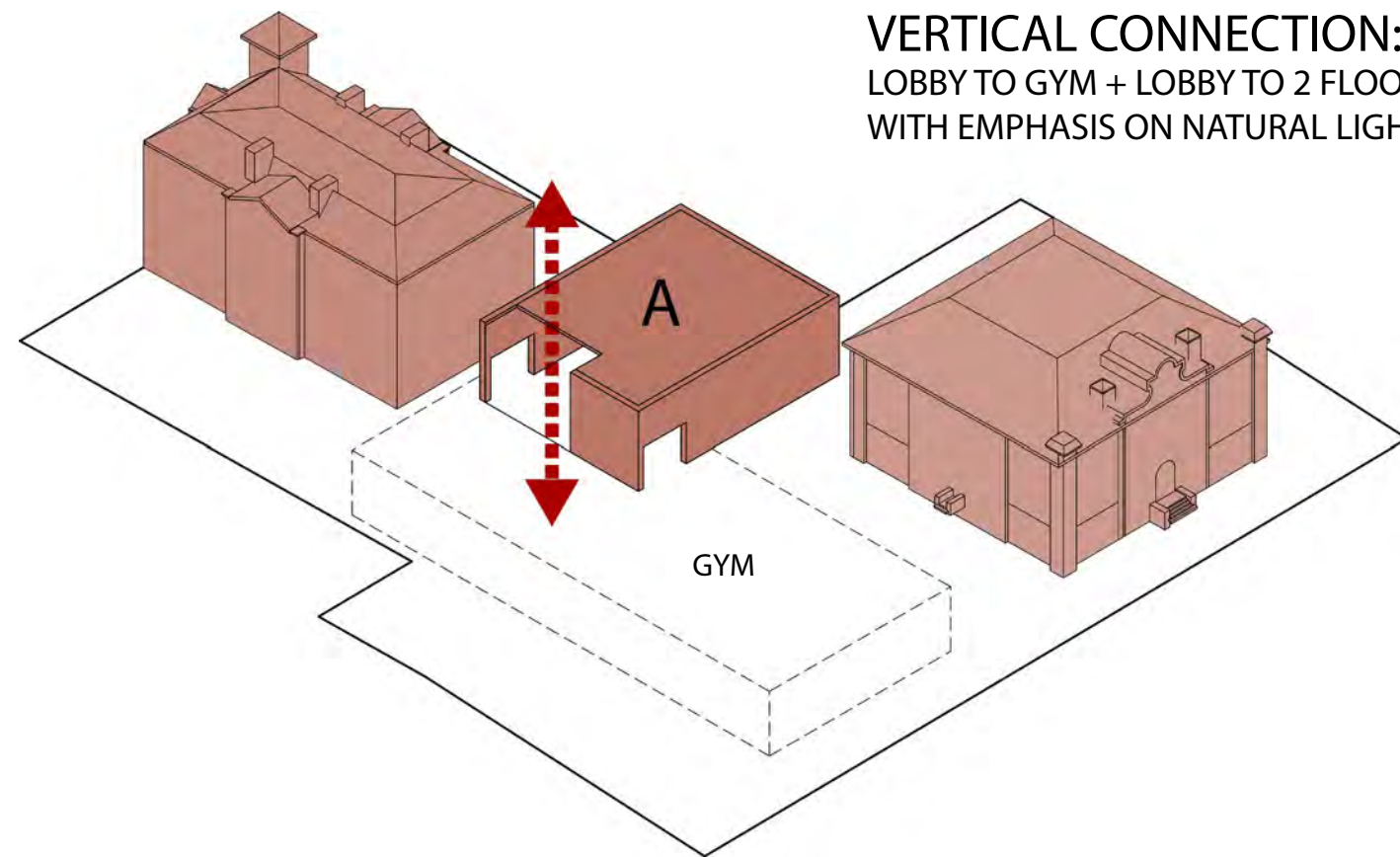
VIEW FROM NORTH EAST CORNER



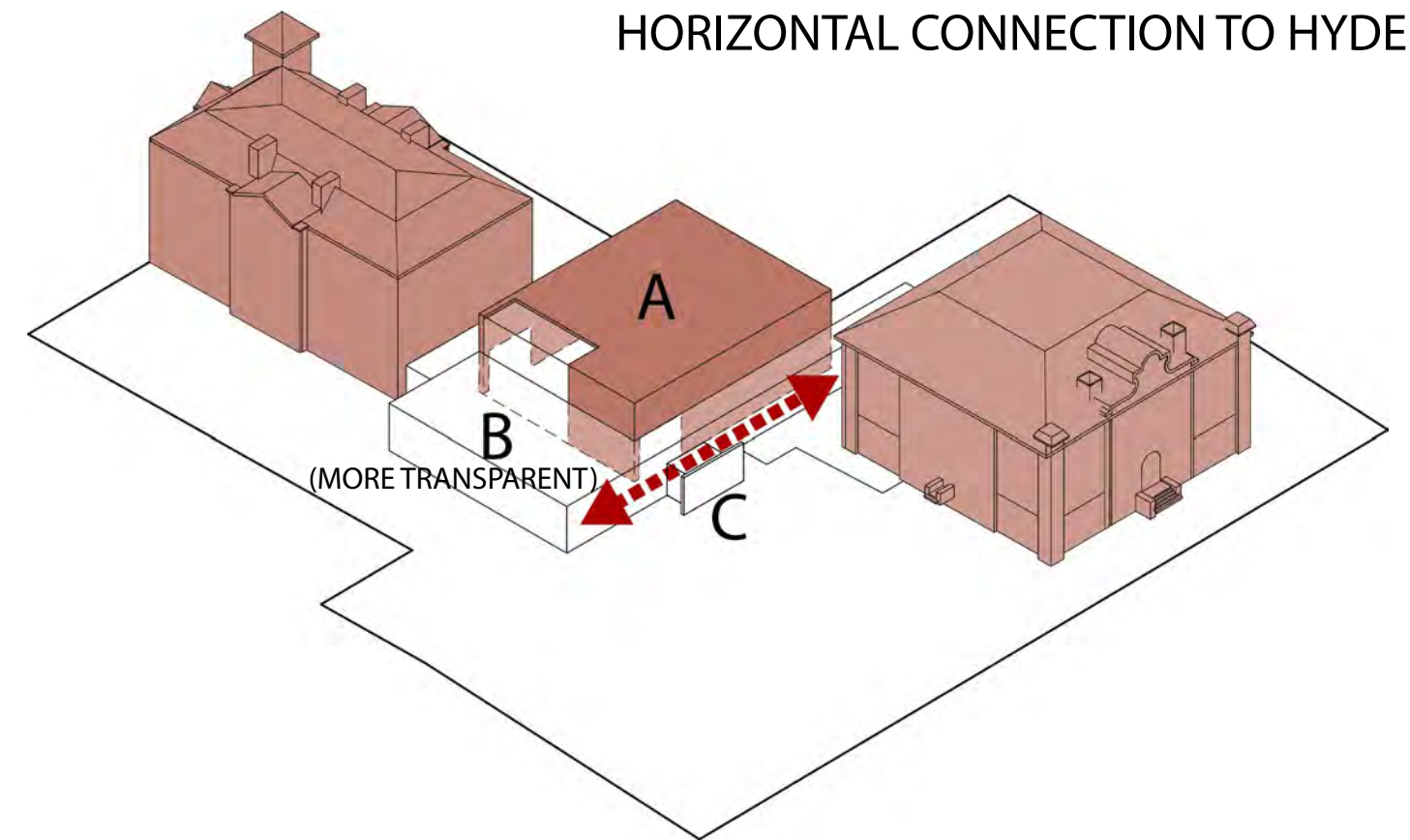
3 BOX SCHEME:  
PRIMACY OF BOX A



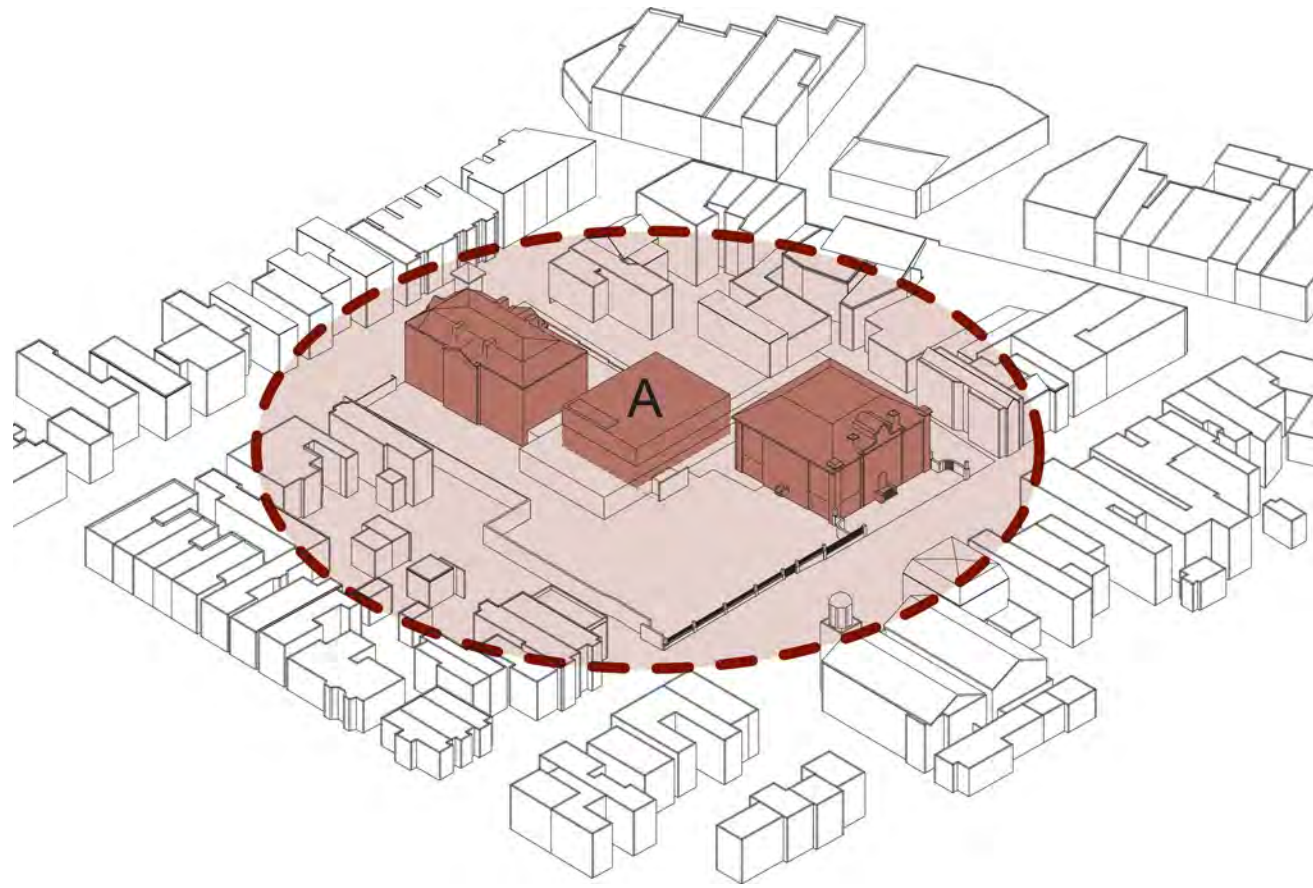
RESPONSE TO PLAYGROUND - ADDISON  
LINK FOR BOX A



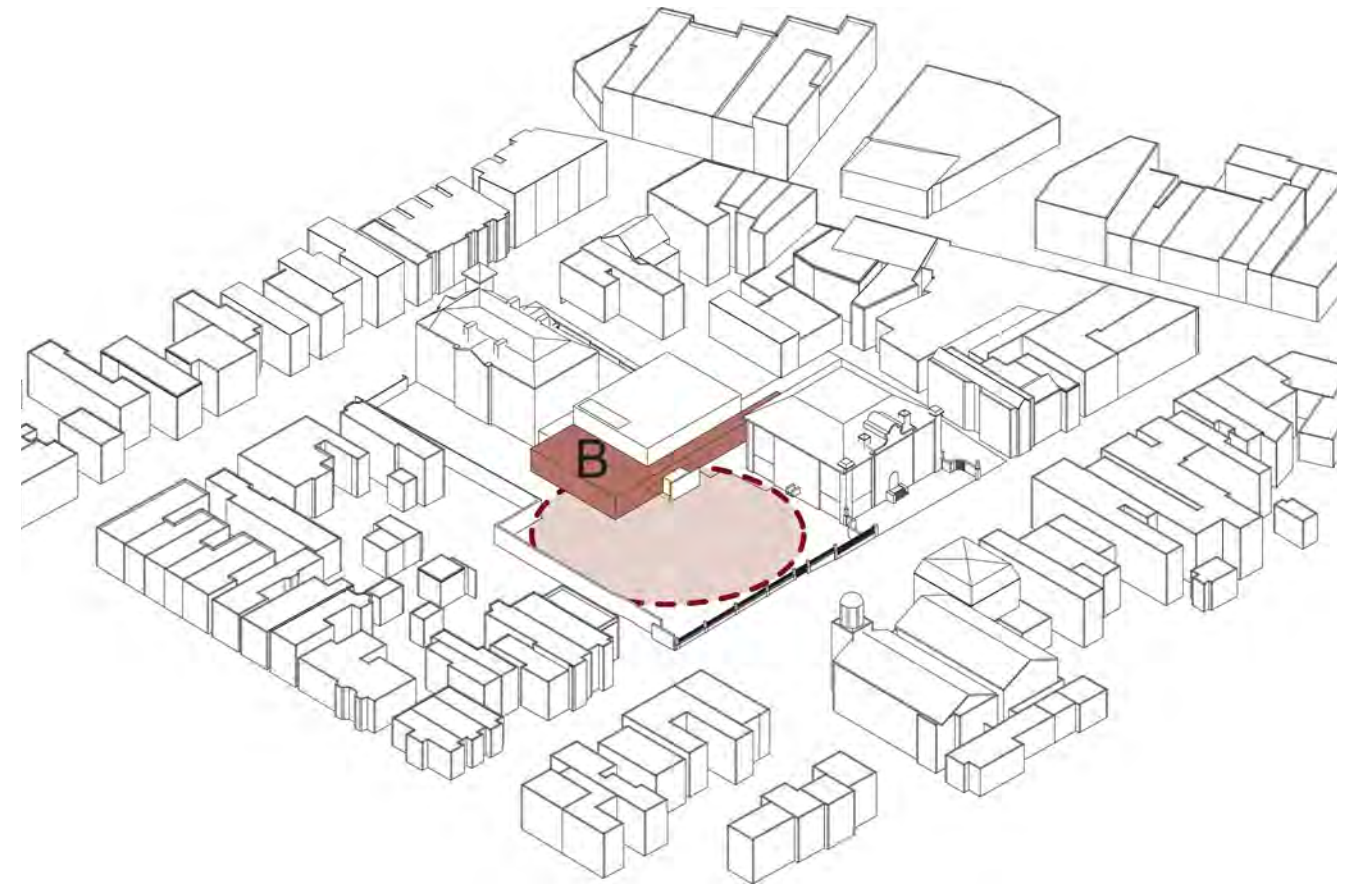
VERTICAL CONNECTION:  
LOBBY TO GYM + LOBBY TO 2 FLOOR  
WITH EMPHASIS ON NATURAL LIGHT



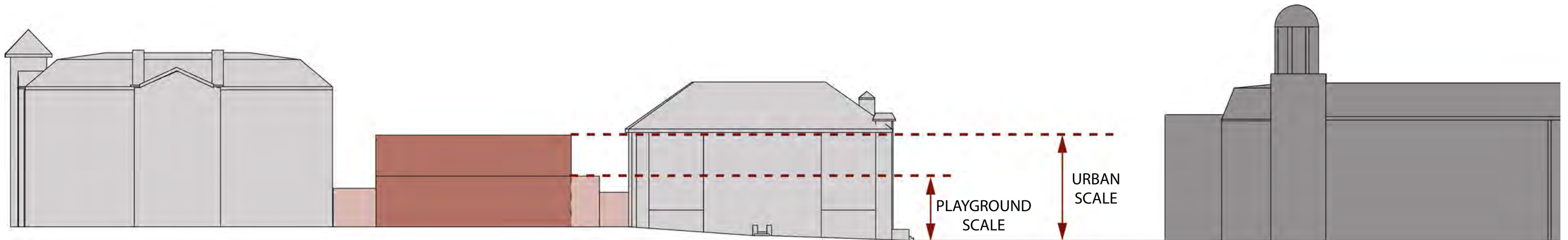
HORIZONTAL CONNECTION TO HYDE



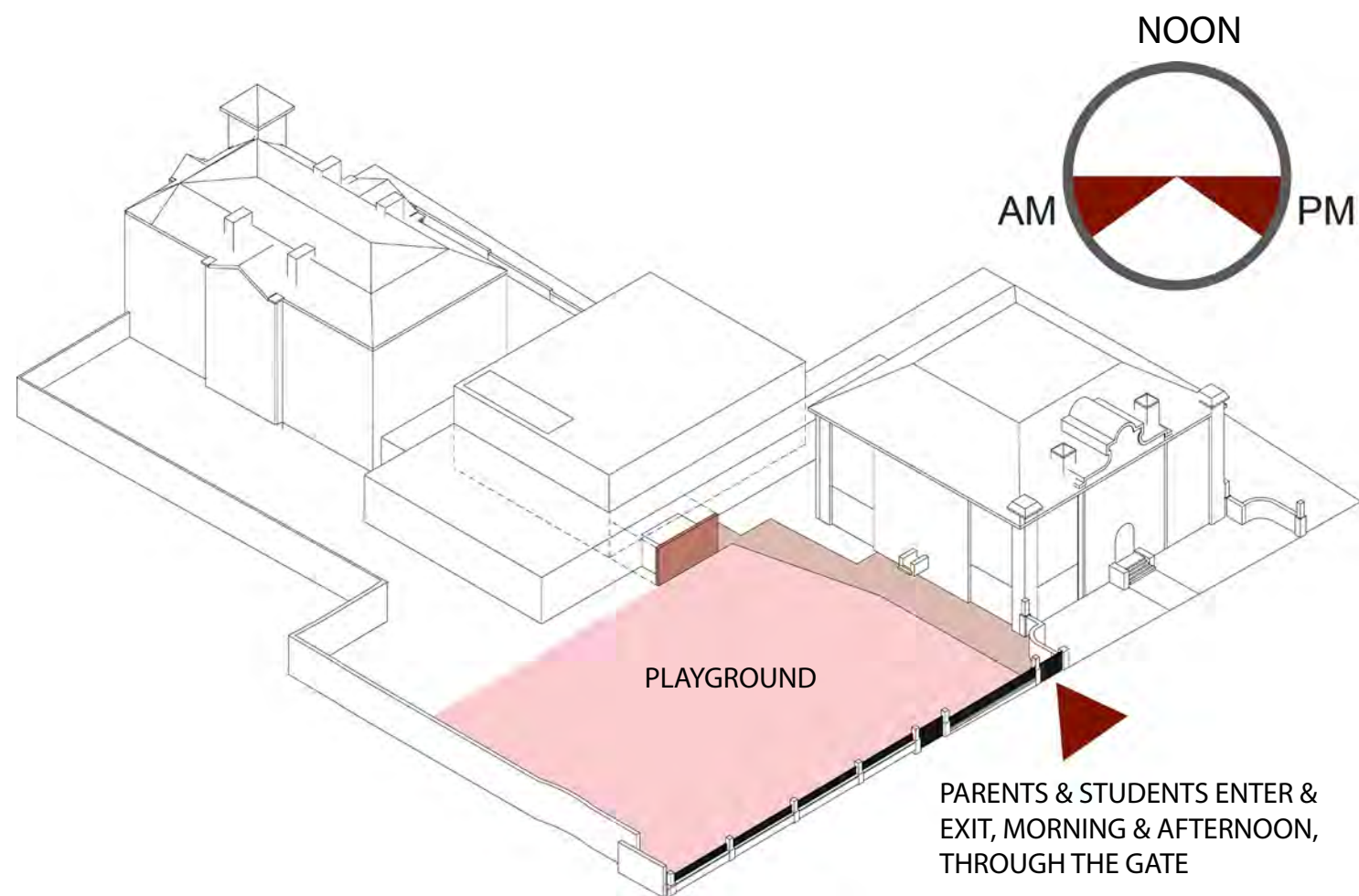
**RELATIONSHIP TO THE SCHOOL ENSEMBLE**  
 THE 2-STORY BOX SPEAKS TO THE ENSEMBLE OF HYDE-ADDISON, THE SITE AND ADJACENT BUILDINGS



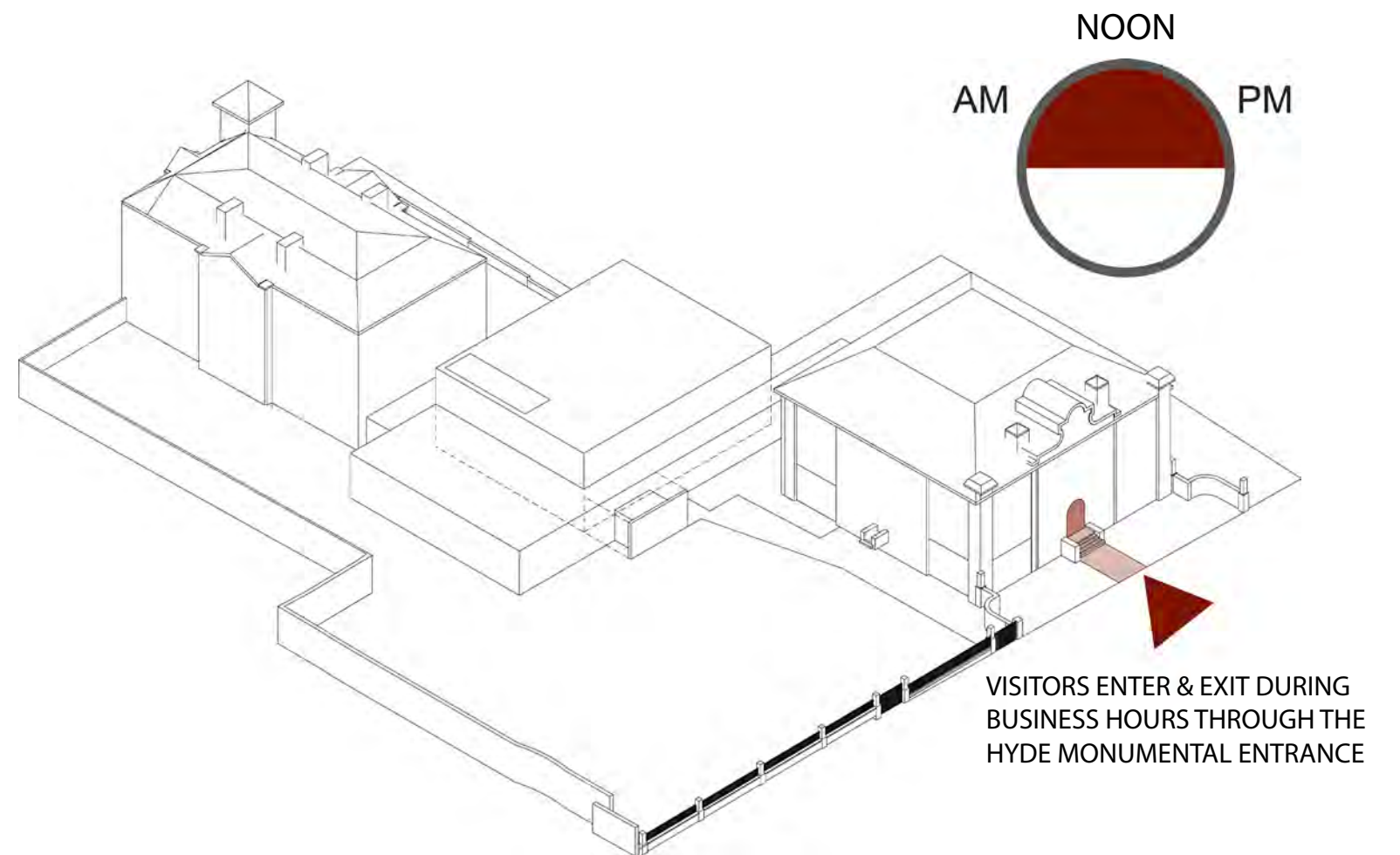
**RELATIONSHIP TO THE PLAYGROUND**  
 THE LOW 1-STORY BOX SPEAKS TO THE INTERNAL SPACE OF THE ENSEMBLE



**RELATIONSHIPS AT DIFFERENT SCALES**

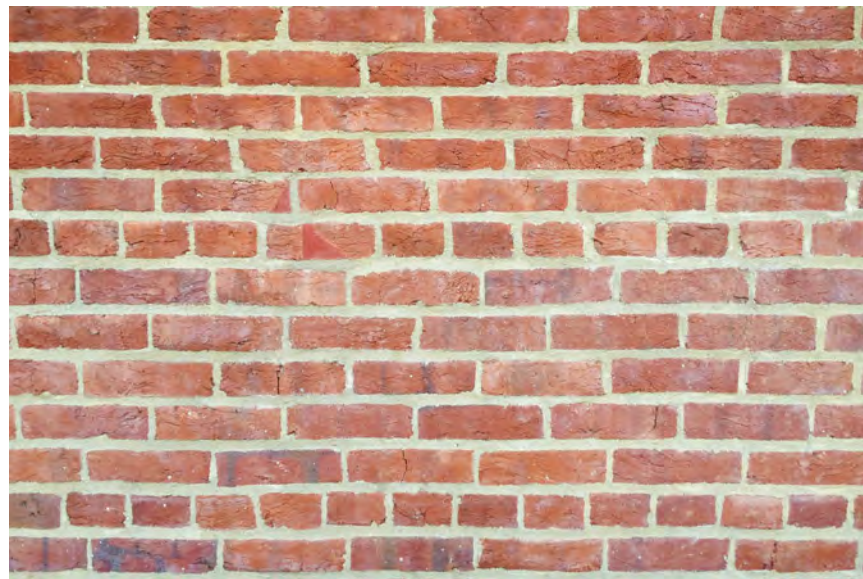


ARRIVAL AND DISMISSAL MAIN ENTRANCE



MAIN ENTRANCE DURING THE DAY





ADDISON BRICK



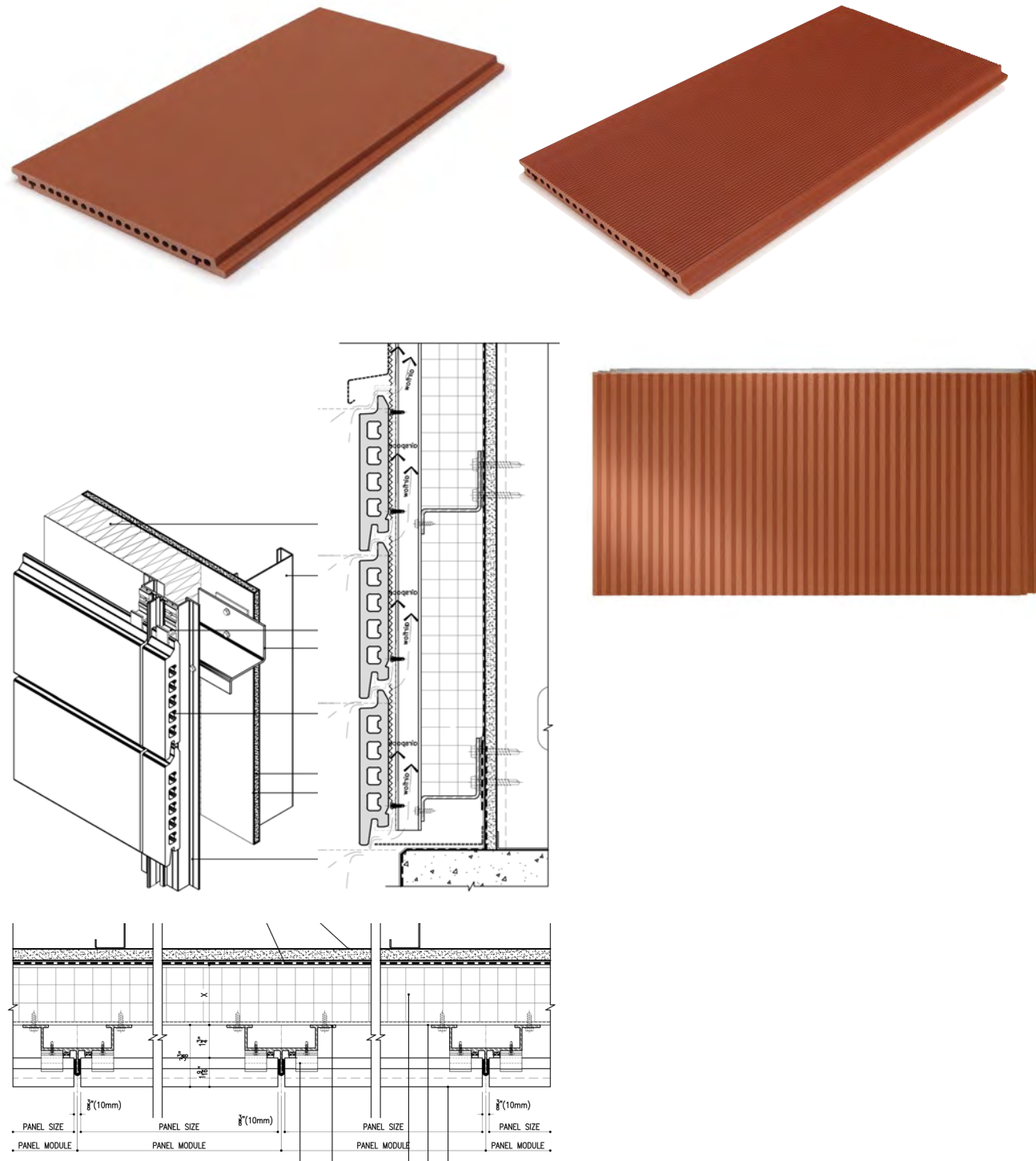
TERRACOTTA



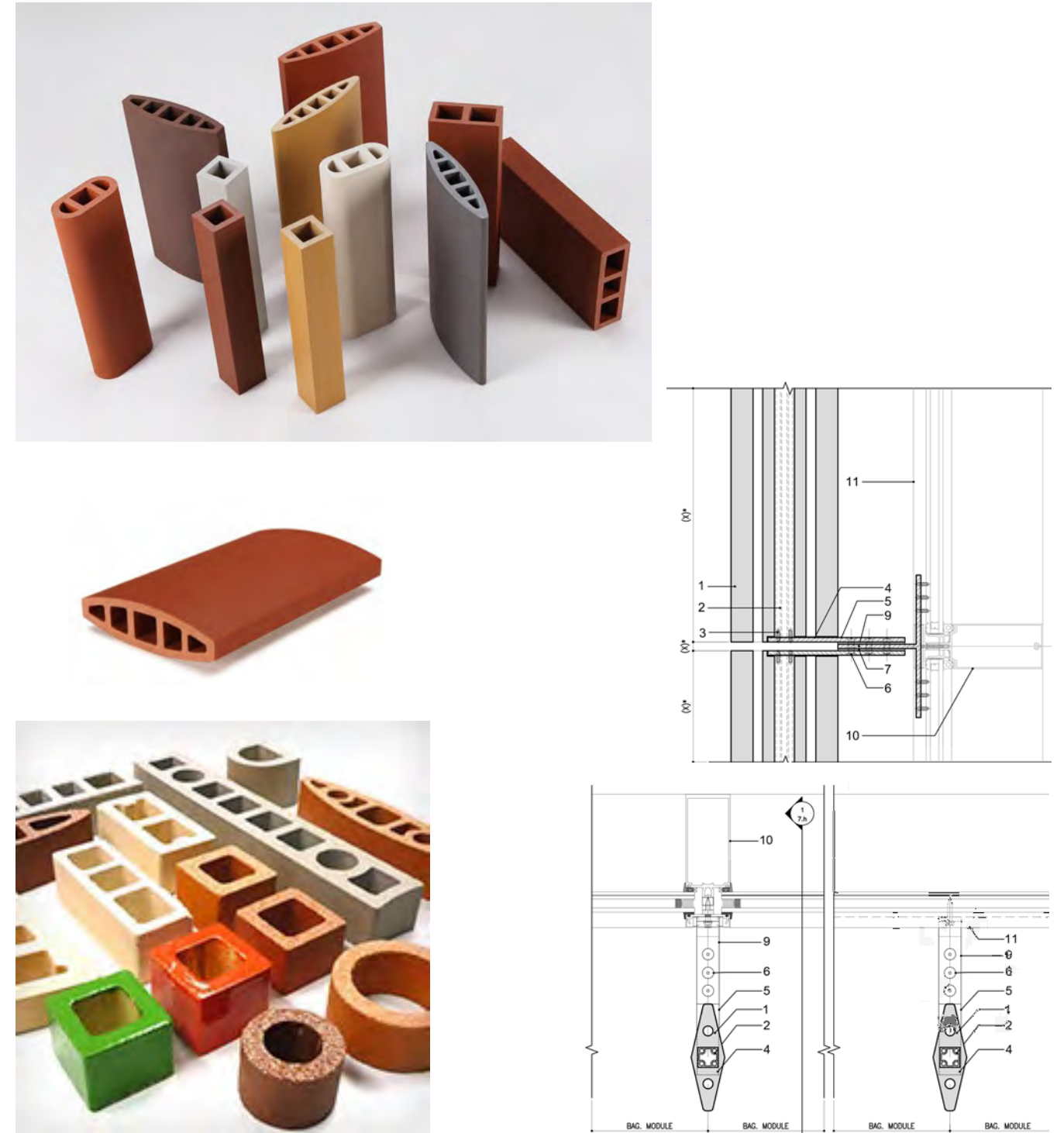
HYDE BRICK

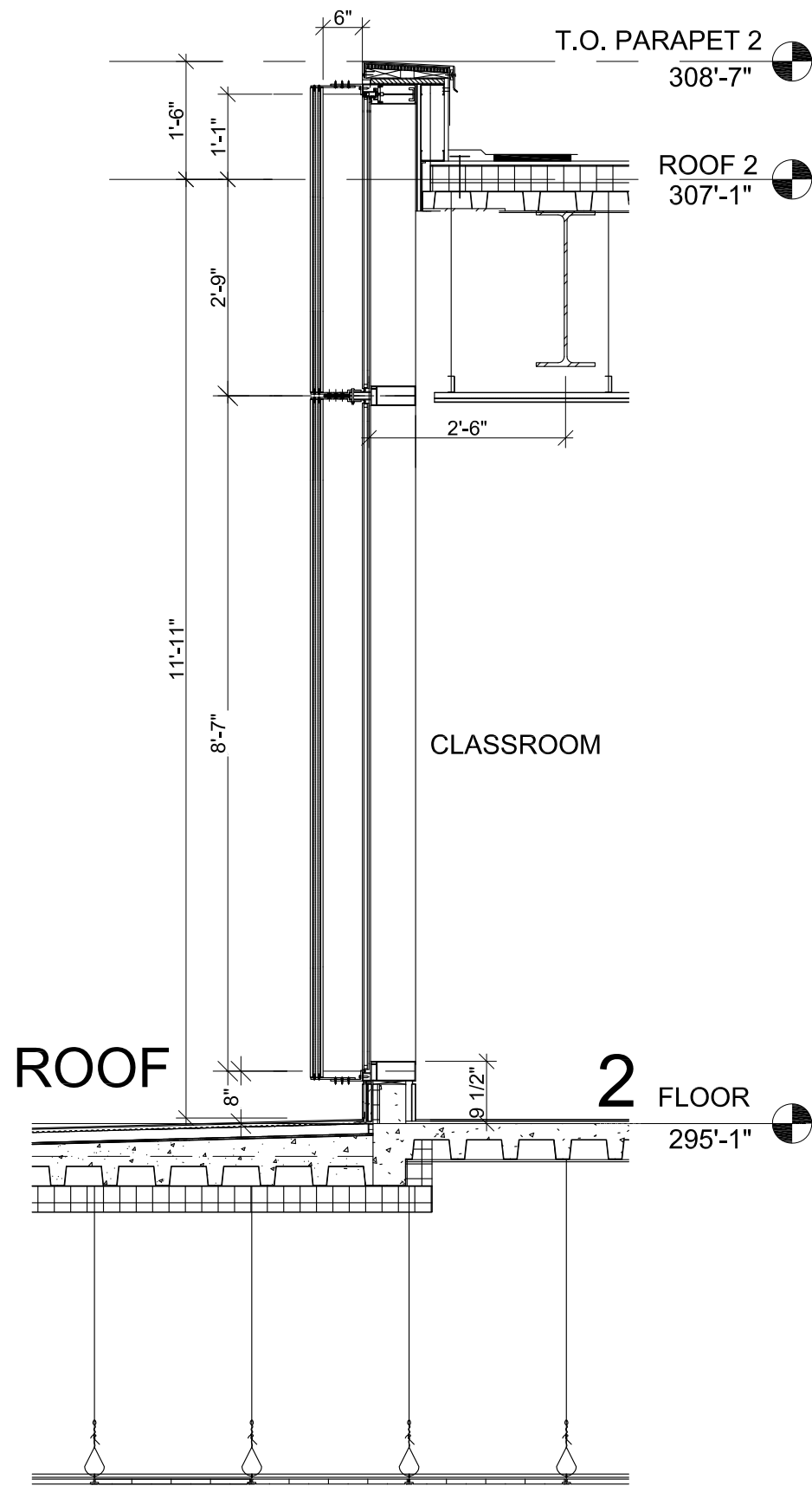
# TERRACOTTA SYSTEMS ARE WELL-ESTABLISHED AND AVAILABLE WITH STANDARD SHAPES AND CONNECTIONS

## TERRACOTTA RAINSCREEN

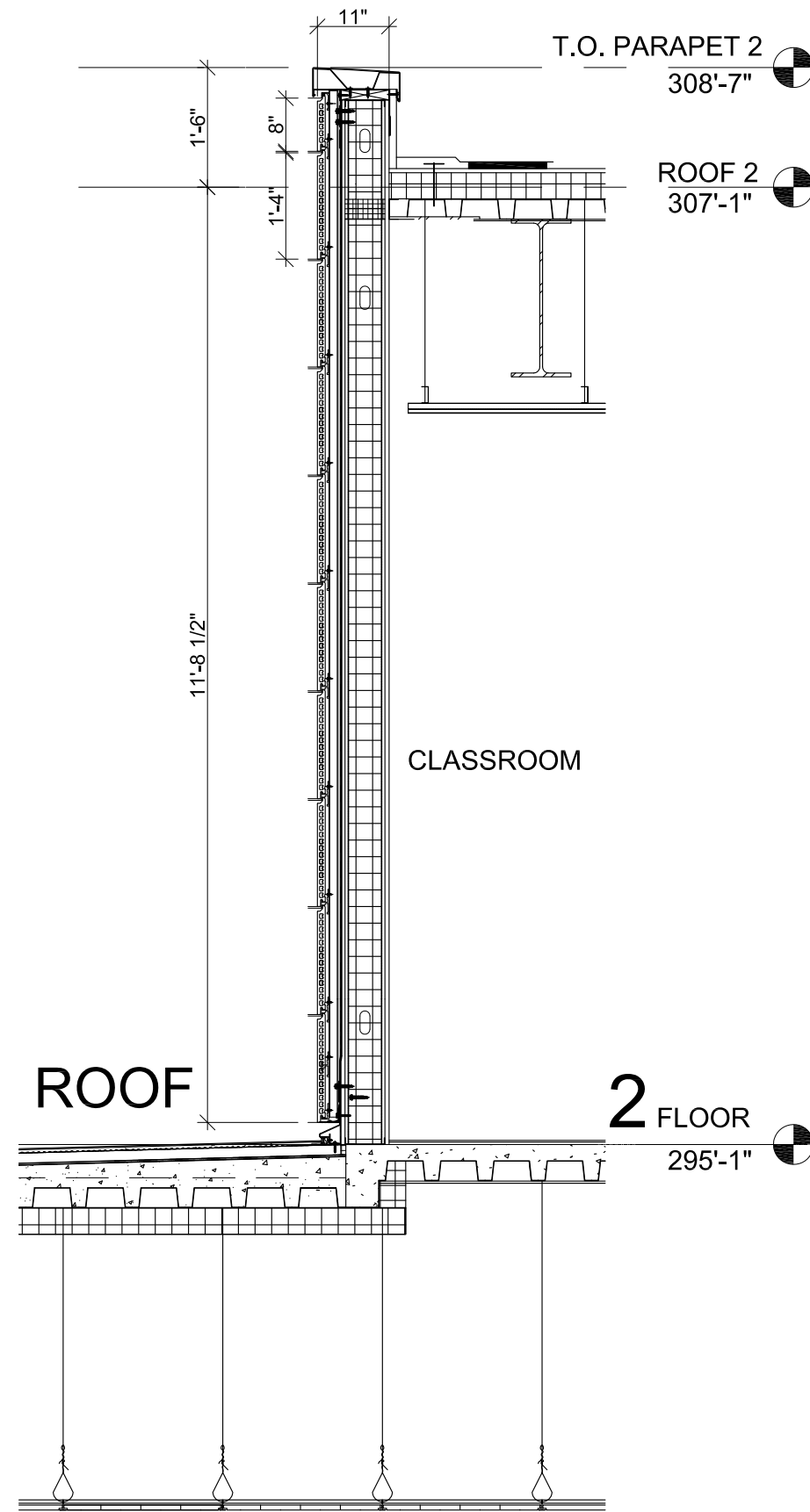


## TERRACOTTA BAGUETTES

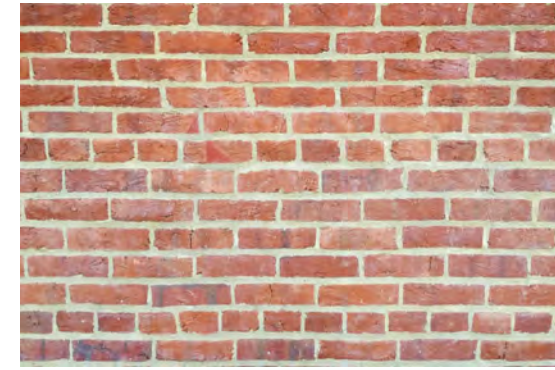




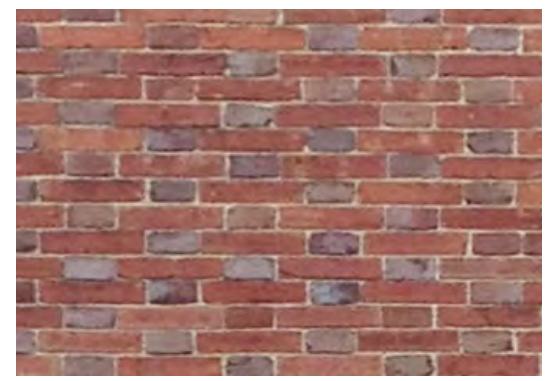
WALL TYPE A



ADDISON



HYDE

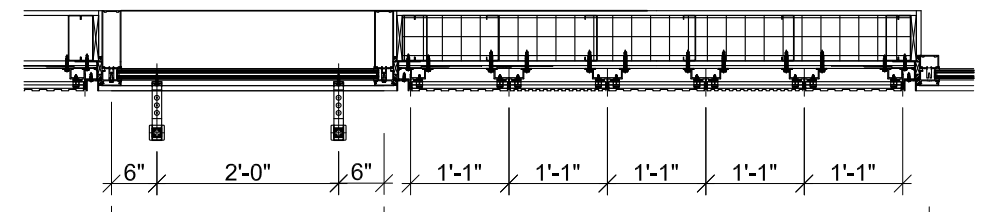


TEXTURED TERRACOTTA IS AN APPROPRIATE MATERIALITY TO BRICK TEXTURES OF HYDE AND ADDISON

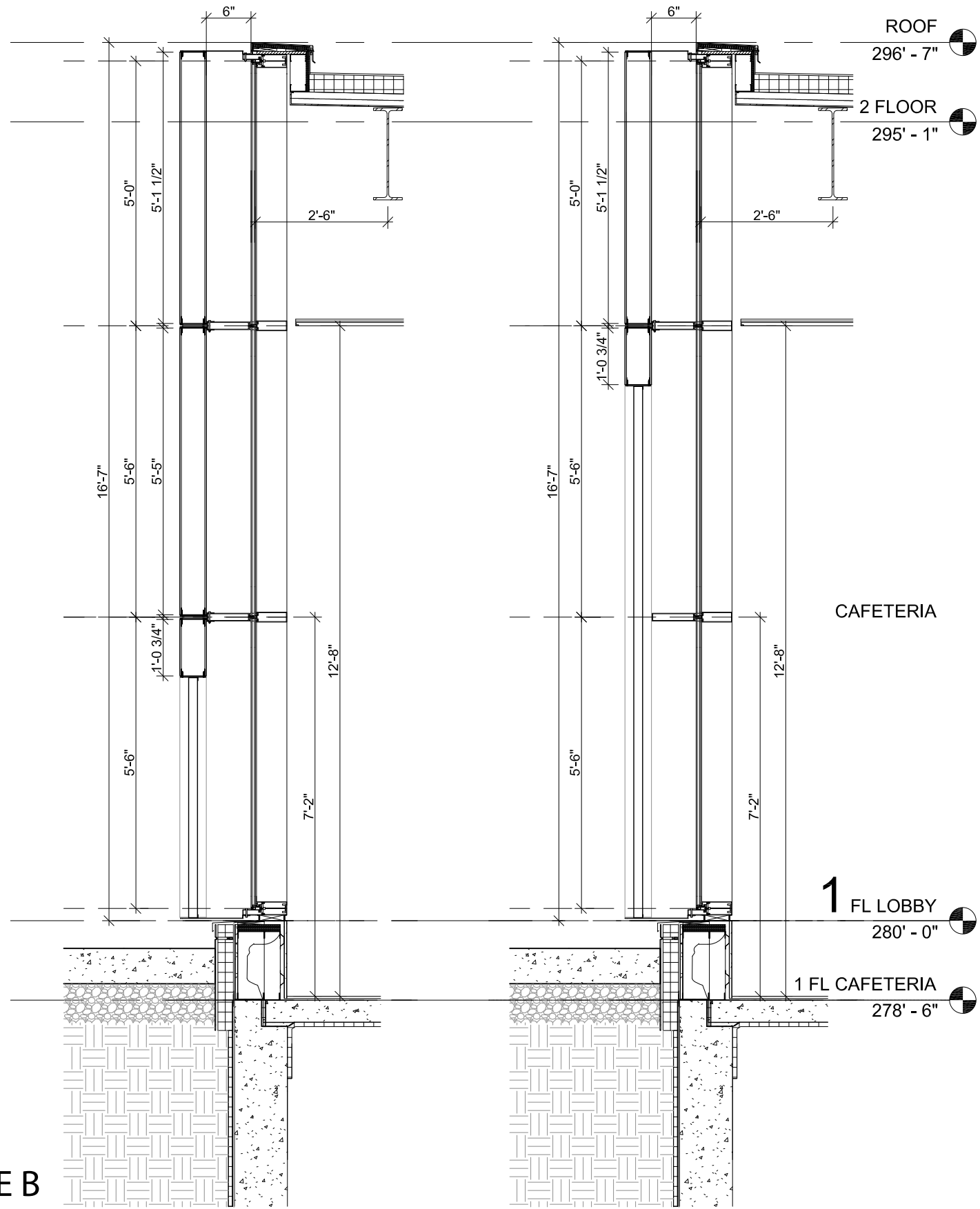


2" SQUARE TERRACOTTA TUBES

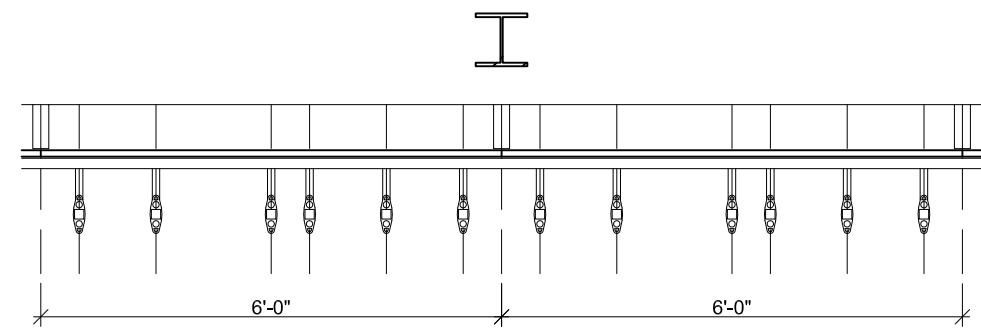
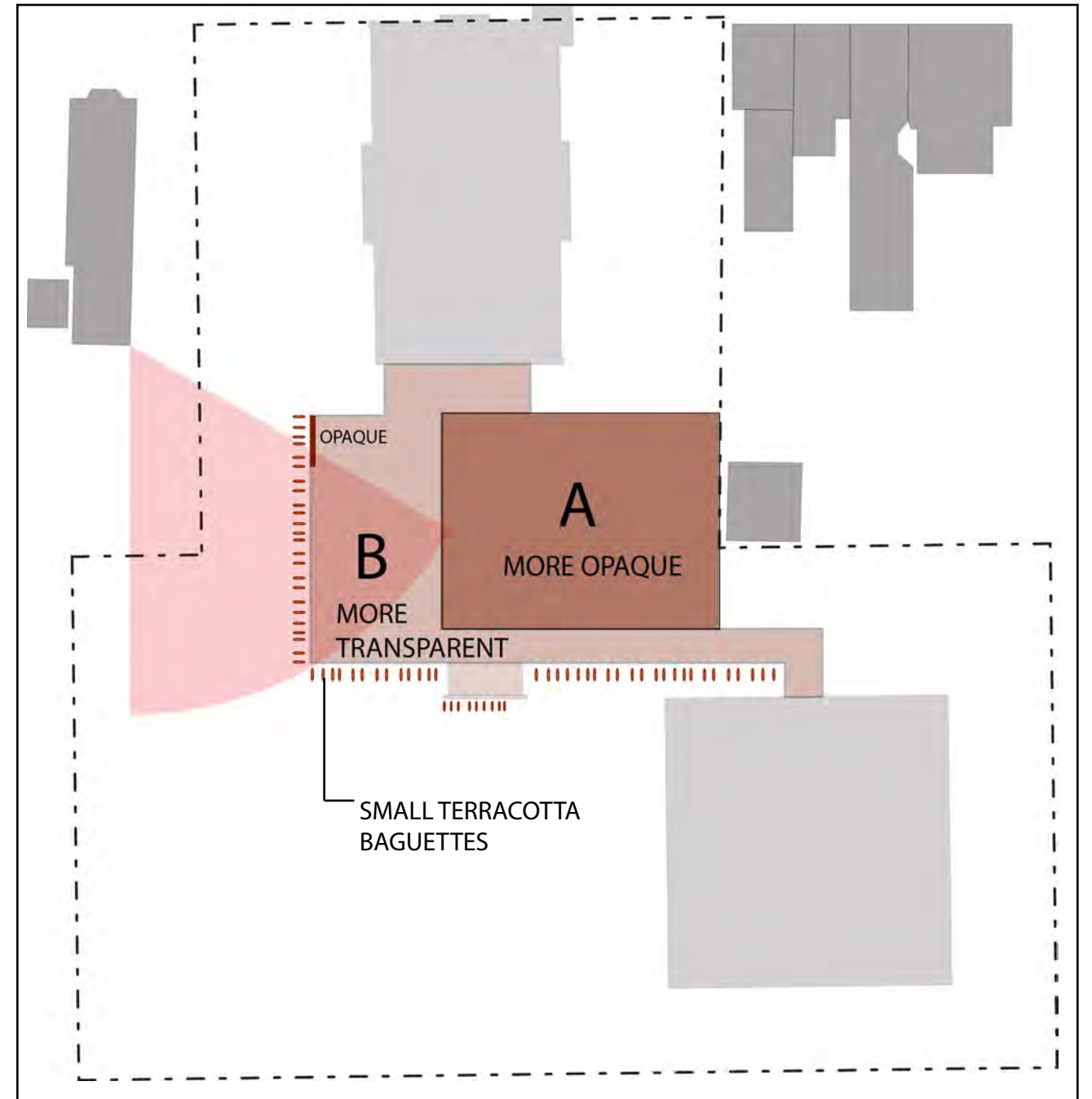
TEXTURED TERRACOTTA PANELS



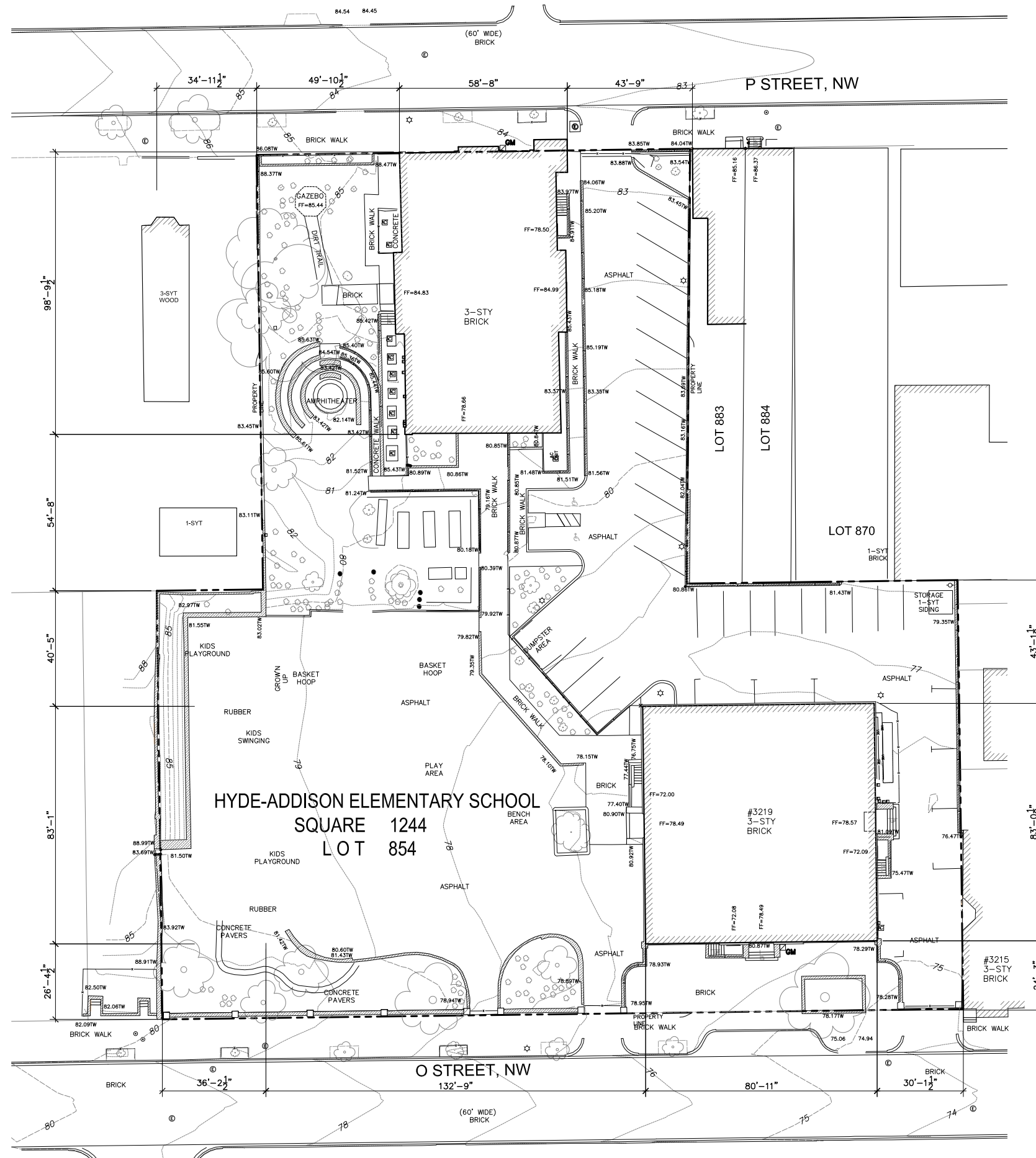
SCALE: 1:30



WALL TYPE B



SCALE: 1:30



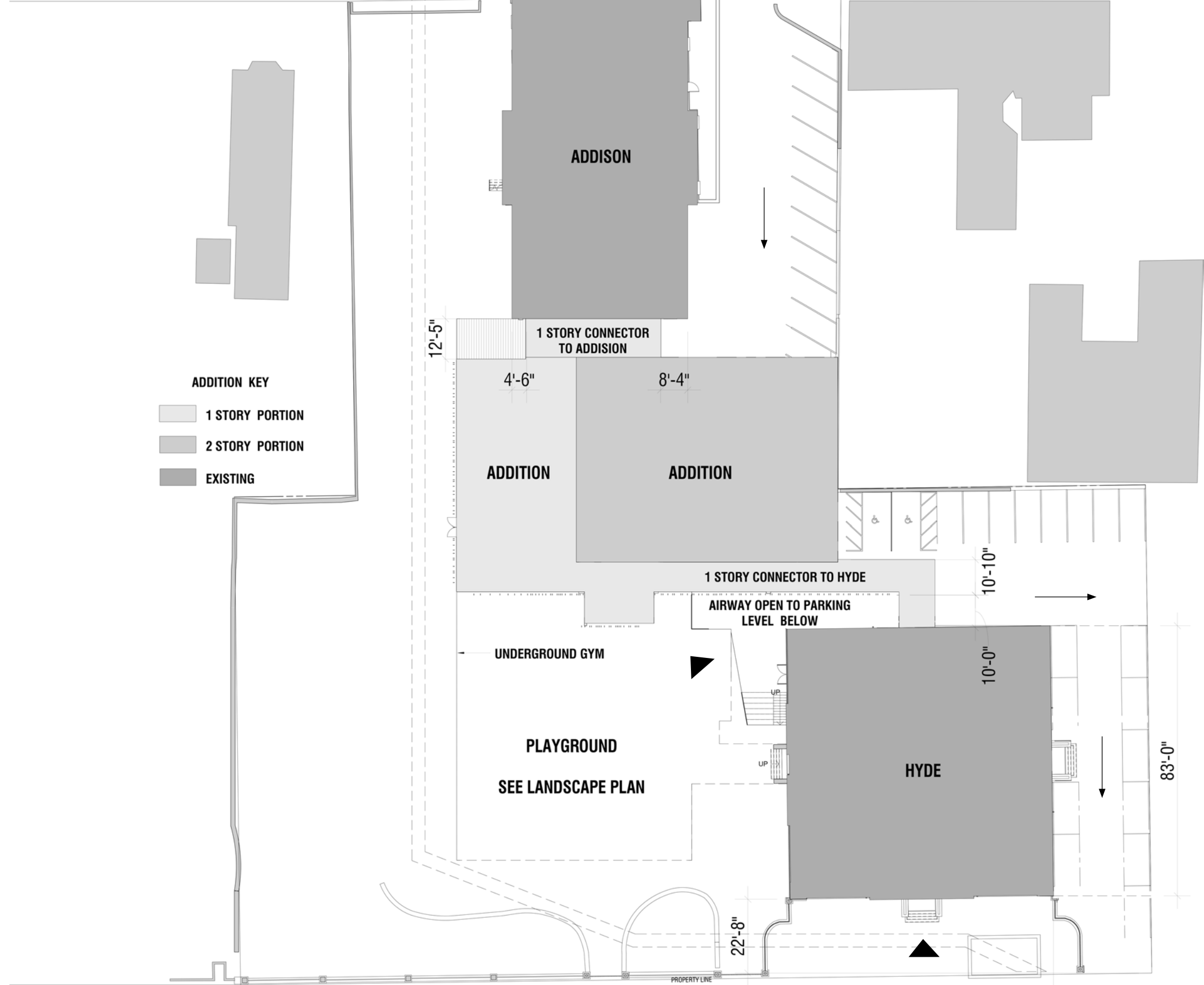
**SITE PLAN: EXISTING**

**HYDE ADDISON ELEMENTARY**  
 3216 O STREET NW, Washington, D.C. 20007

SCALE: 1 : 500



- ADDITION KEY**
- 1 STORY PORTION
  - 2 STORY PORTION
  - EXISTING



**ARCHITECTURAL SITE PLAN: PROPOSED**

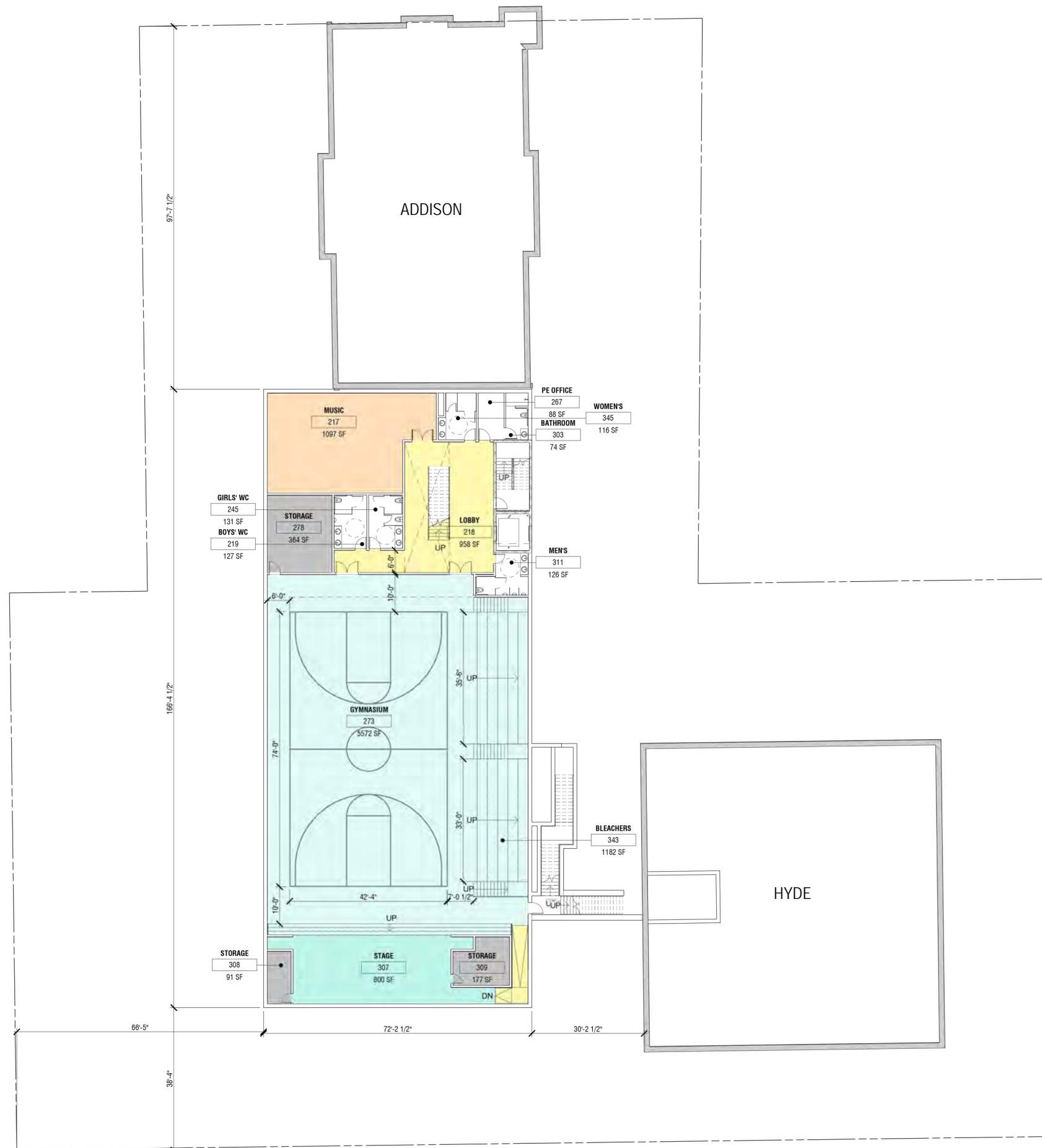
O ST. N.W.

PROPERTY LINE

SCALE: 1/32" = 1'-0"



- CIRCULATION
- GYM
- ADMINISTRATIVE
- HEALTH SUITE
- LIBRARY
- CAFETERIA
- KITCHEN
- CLASSROOM

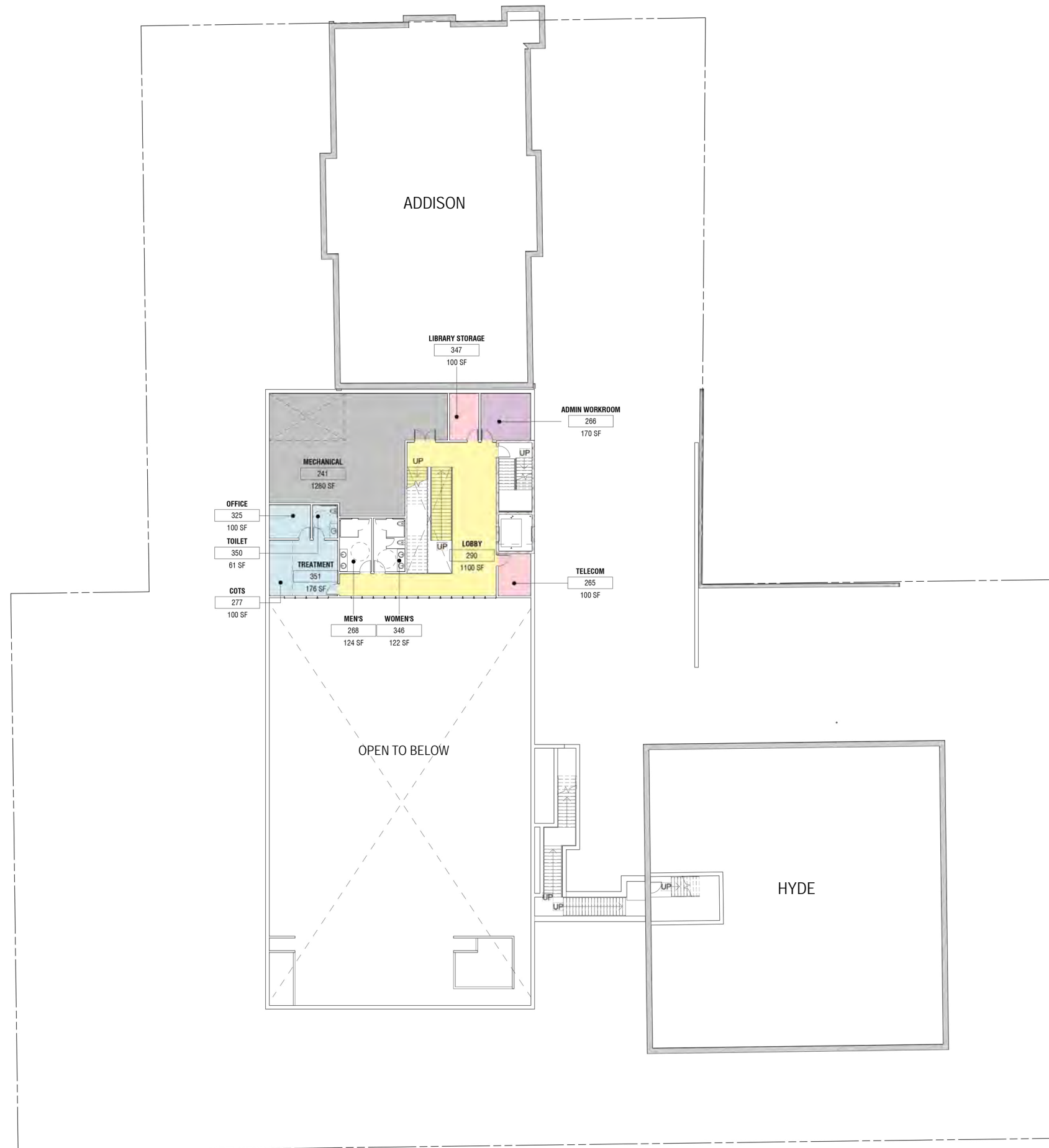


00 BASEMENT PLAN

SCALE: 1/32" = 1'-0"



- CIRCULATION
- GYM
- ADMINISTRATIVE
- HEALTH SUITE
- LIBRARY
- CAFETERIA
- KITCHEN
- CLASSROOM

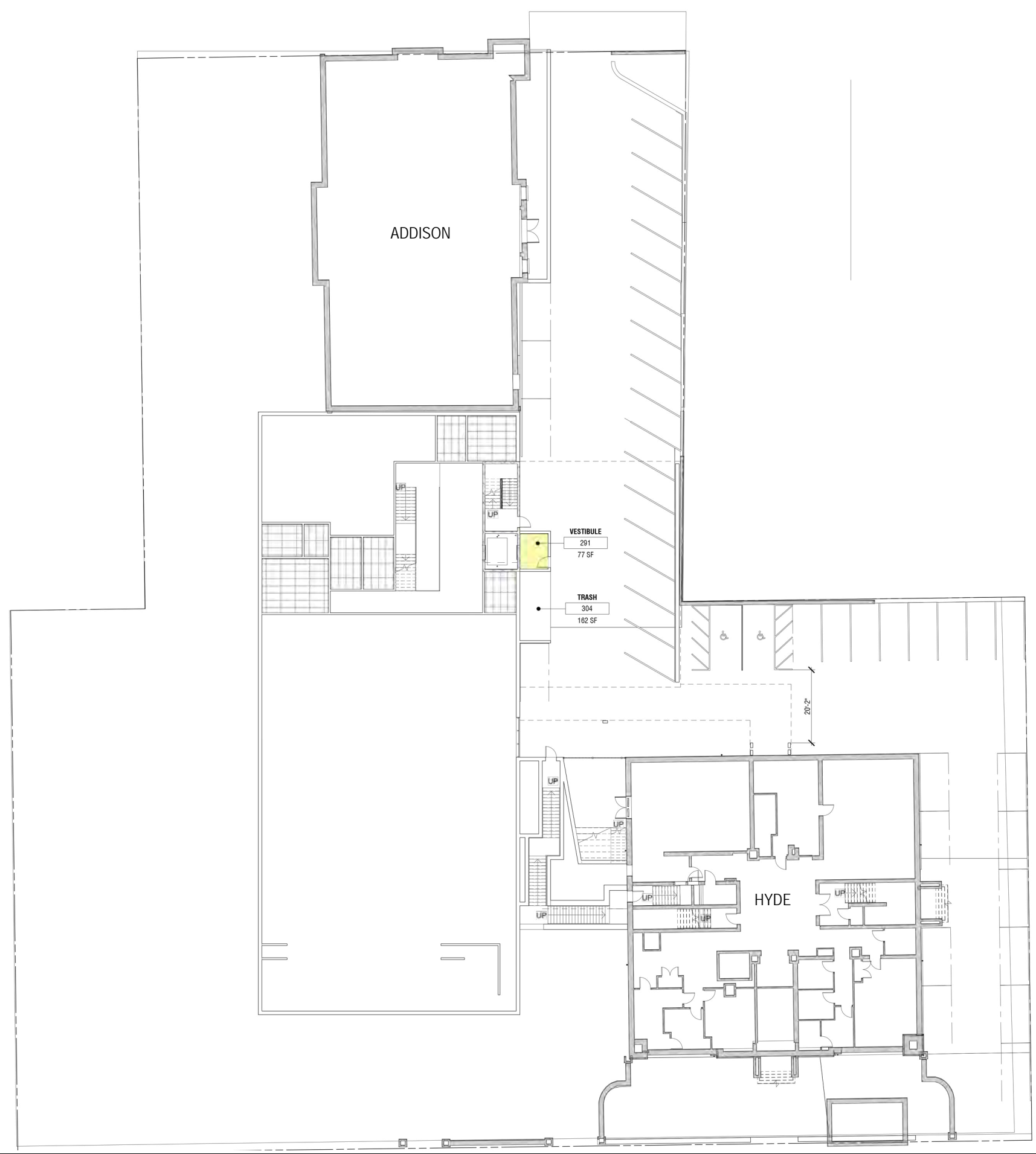


00.1 MEZZANINE PLAN

SCALE: 1/32" = 1'-0"



- CIRCULATION
- GYM
- ADMINISTRATIVE
- HEALTH SUITE
- LIBRARY
- CAFETERIA
- KITCHEN
- CLASSROOM



00.2 PARKING PLAN

SCALE: 1/32" = 1'-0"



**01 FLOOR PLAN**

**HYDE ADDISON ELEMENTARY**  
 3216 O STREET NW, Washington, D.C. 20007





- CIRCULATION
- GYM
- ADMINISTRATIVE
- HEALTH SUITE
- LIBRARY
- CAFETERIA
- KITCHEN
- CLASSROOM


02 FLOOR PLAN

SCALE: 1/32" = 1'-0"



03 ROOF PLAN

HYDE ADDISON ELEMENTARY  
 3216 O STREET NW, Washington, D.C. 20007

SCALE: 1/32" = 1'-0" 

# HYDE ADDISON ELEMENTARY TREE PLAN



**LEGEND**

- TREE TO BE REMOVED
- TREE TO REMAIN

# HYDE ADDISON ELEMENTARY LANDSCAPE PLAN

The Hyde Addison landscape plan combines areas for traditional play equipment, natural features, and forms that respond to the buildings' geometries to provide meaningful, imaginative, and educational opportunities throughout its two distinct spaces: the O Street Garden and Playground and the P Street Garden and Playground.

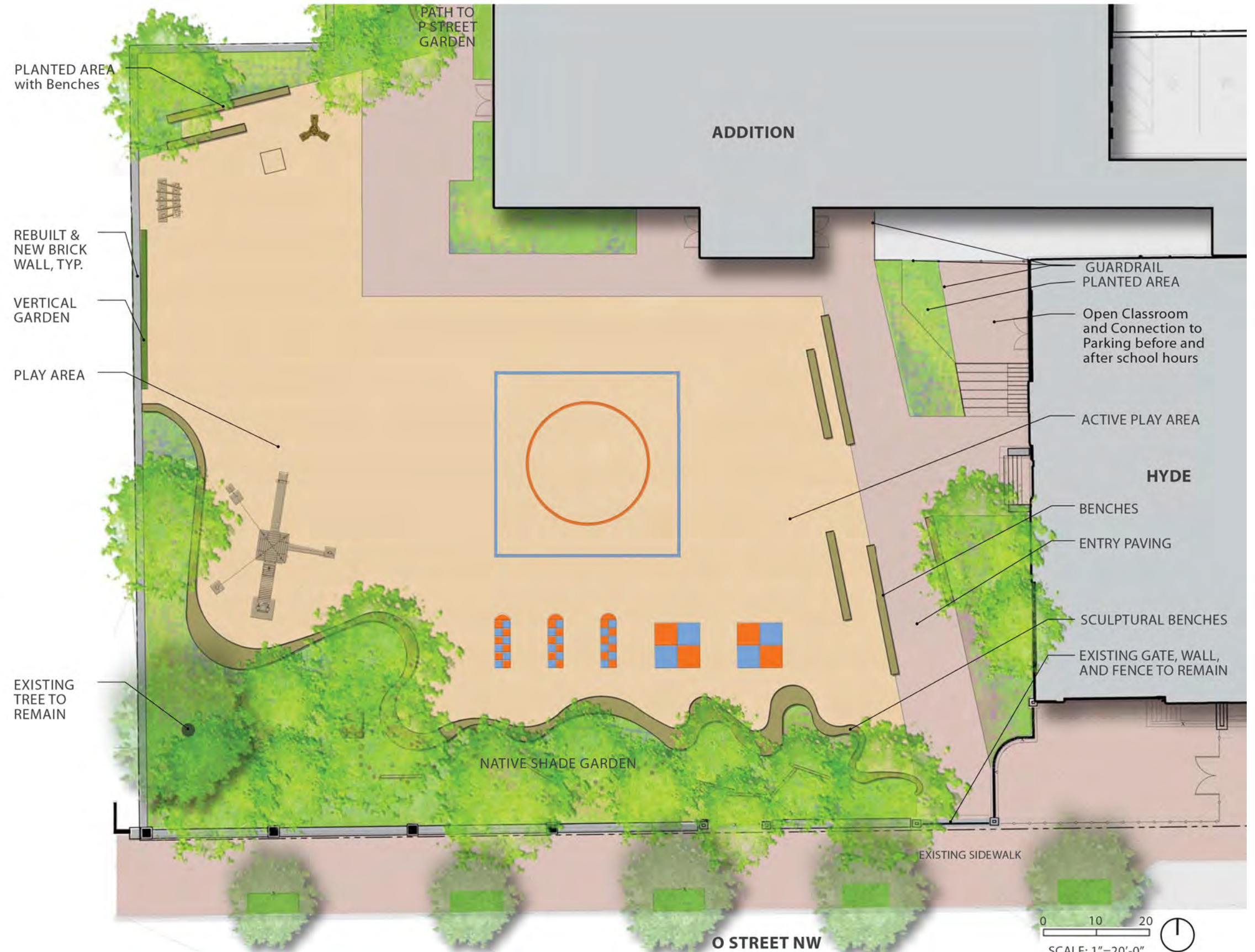


\*Selection of Play Equipment to be by DCPS.

# O STREET GARDEN AND PLAYGROUND

Students, teachers, and parents are welcomed to the school via the O Street Garden. The large, mature magnolia tree to remain at the southwest corner of the site will be augmented with new plantings of large native canopy and flowering trees. Carefully selected and labeled perennials, grasses, and shrubs planted along the O Street sidewalk in the **Native Shade Garden** will reference local native habitats in this urban setting. Horizontal and sculptural wood benches are located around the perimeter of the space for parents, teachers and children.

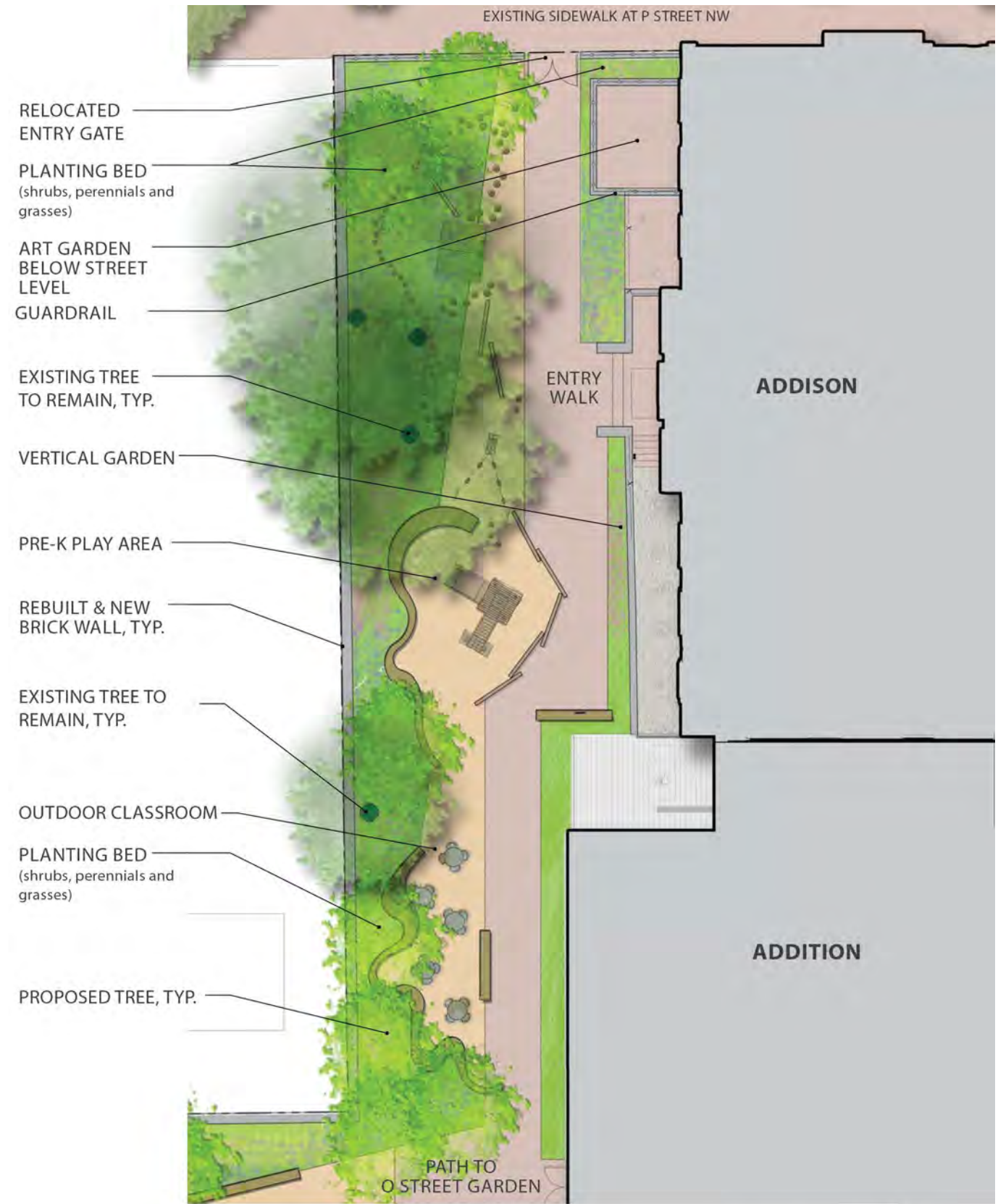
The O Street Playground is a distinctive and lively area that connects the three buildings on campus. The **Active Play Area** contains a play field contains space for games such as kickball, hopscotch, and foursquare. This space is large and flexible to accommodate a variety of organized games as well as all-school functions and events. The western side of the playground contains area for play structures of varied scales and types, including music and kinetic elements.



\*Selection of Play Equipment to be by DCPS.

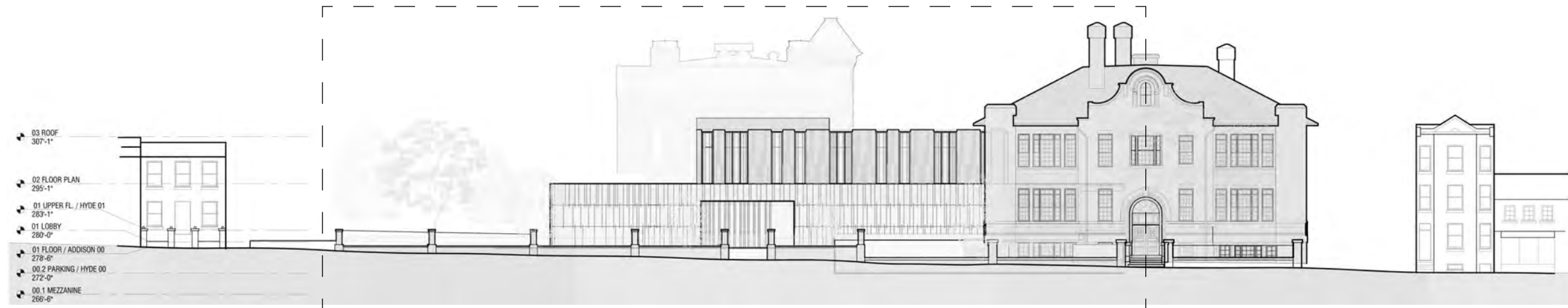
# P STREET GARDEN AND PLAYGROUND

Accessed via a path from the O Street Garden and Playground or via the relocated P Street gates, this garden is the entrance to the school on the north side of the site. It is a smaller, intimate space for play, outdoor gatherings and teaching opportunities. The **Pre-K Play Area** contains space for play elements of a smaller scale for younger children. The garden contains an **Outdoor Classroom** with elements such as tables, chairs and benches for group learning. A **Vertical Garden** may offer a learning opportunity and help camouflage the a/c units beyond. An all-season mix of colorful perennials, grasses, and trees buffer the west side of the site along the rebuilt and new brick wall bring nature into this urban garden.



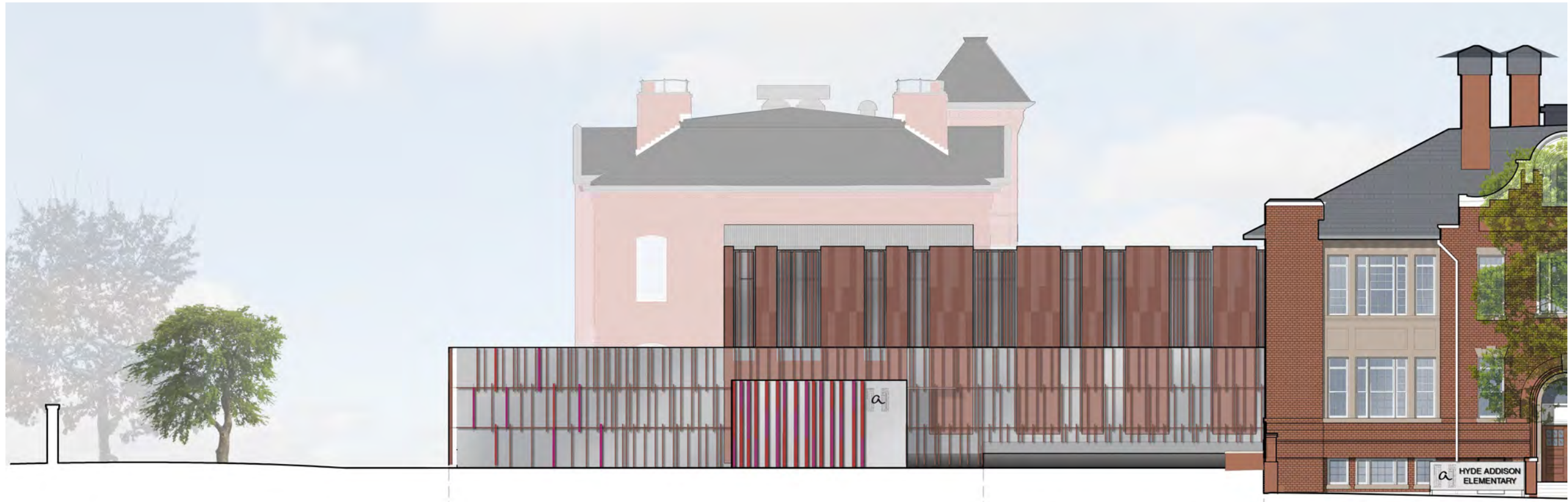
\*Selection of Play Equipment to be by DCPS.





**SOUTH ELEVATION: O STREET**

KEY SCALE : 1/32" = 1'-0"



GYM BELOW GROUND



SOUTH ELEVATION

KEY SCALE : 1/32" = 1'-0"



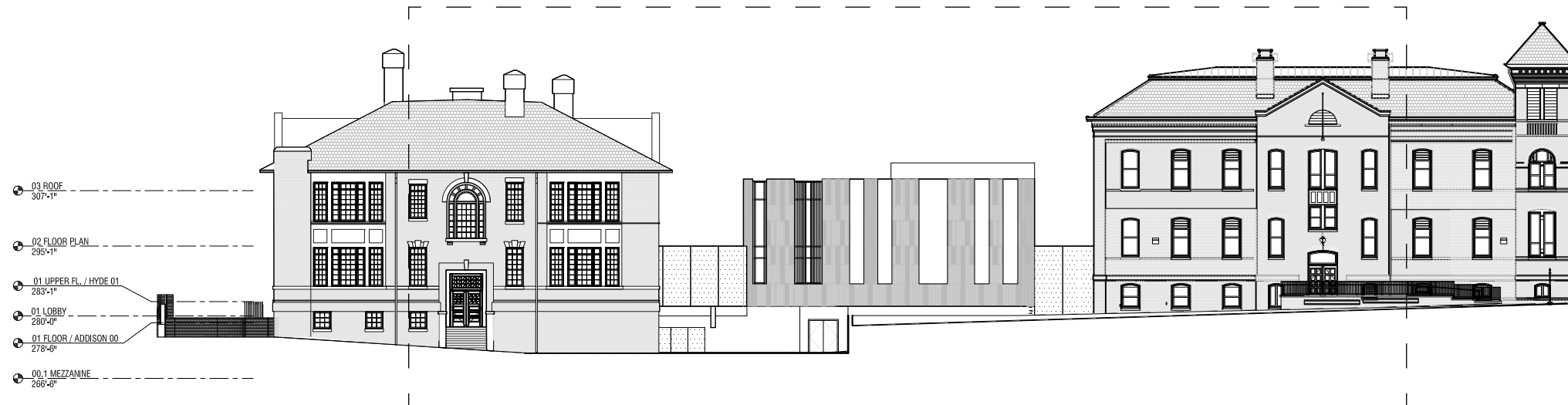
**NORTH ELEVATION: P STREET**

KEY SCALE : 1/32" = 1'-0"



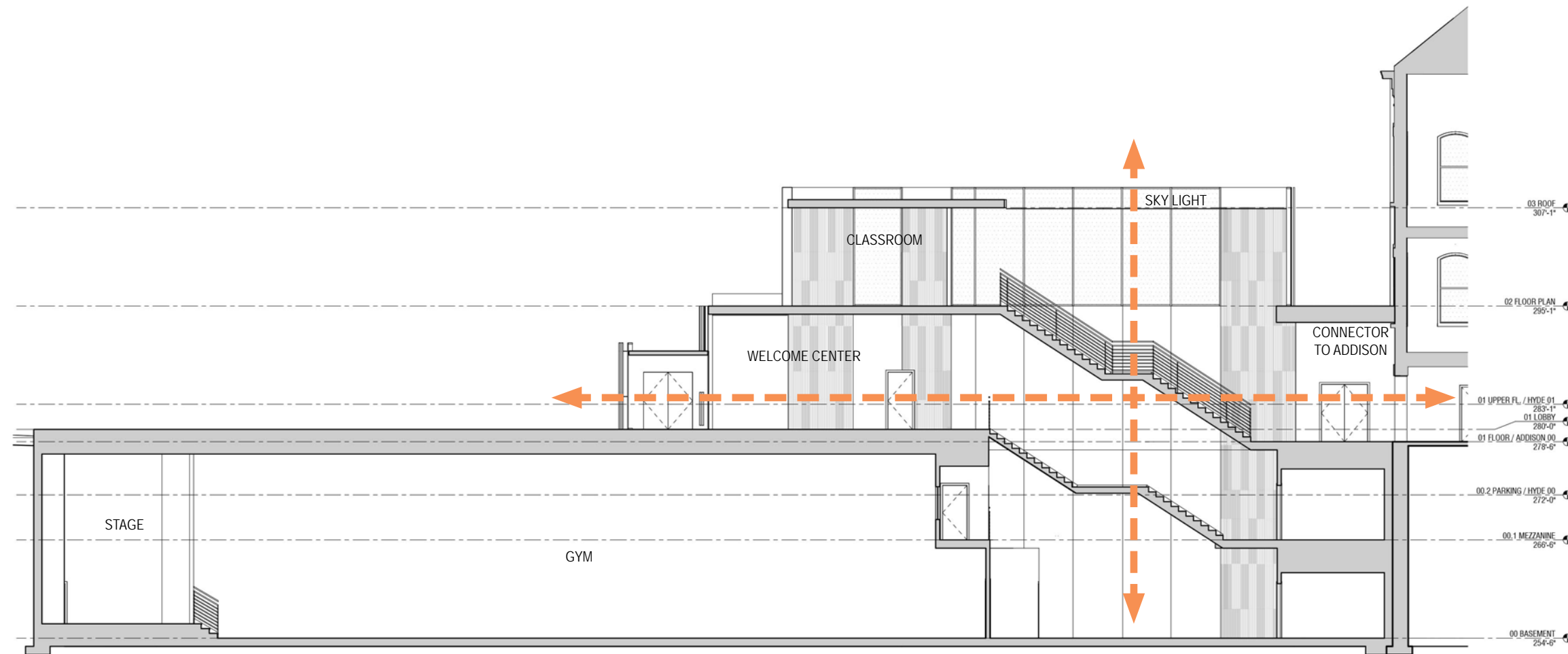
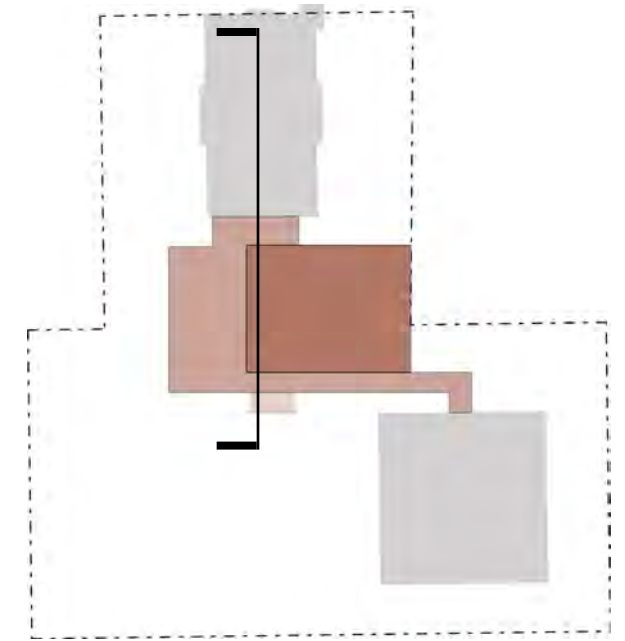
WEST ELEVATION

KEY SCALE : 1/32" = 1'-0"



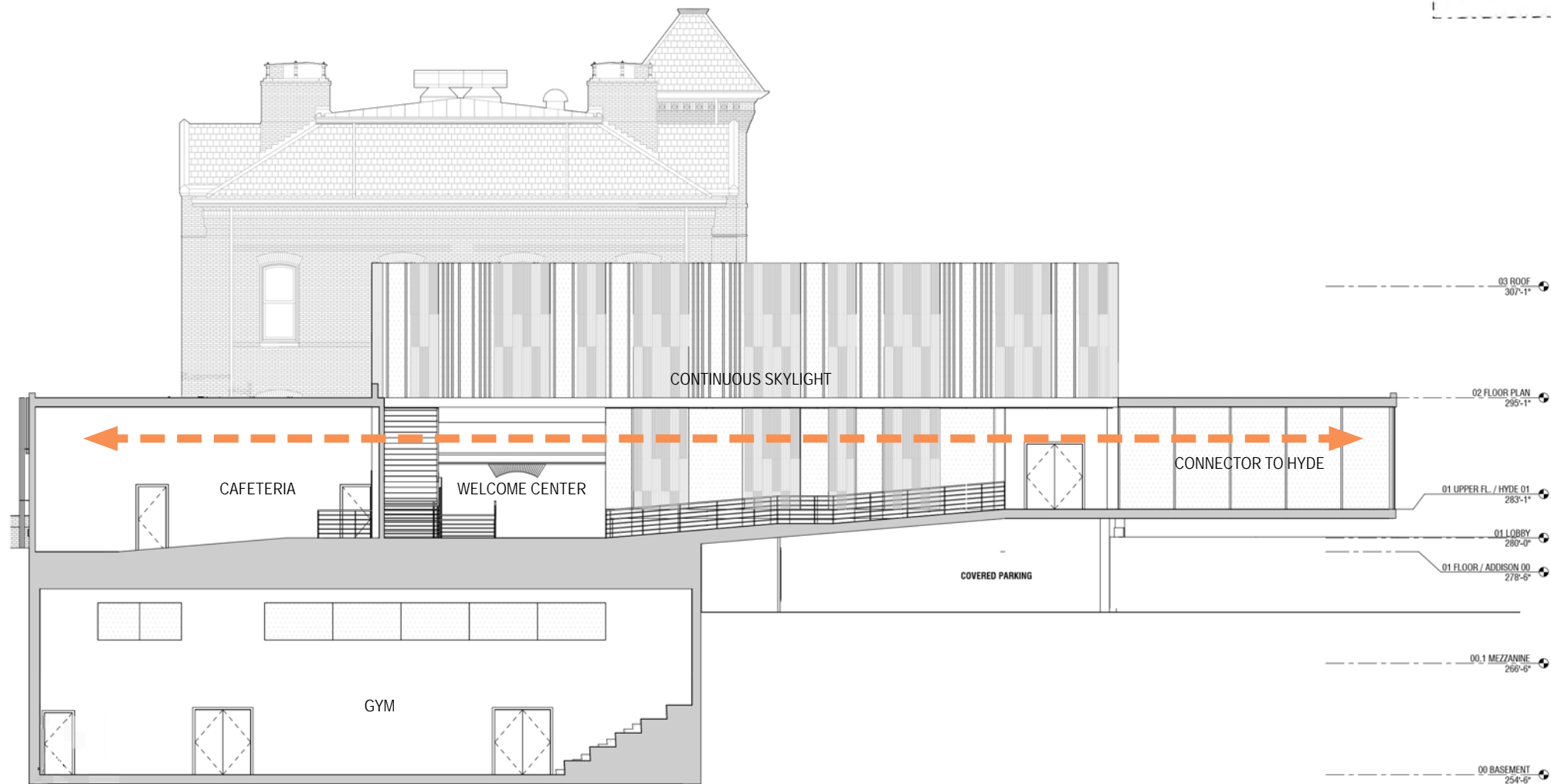
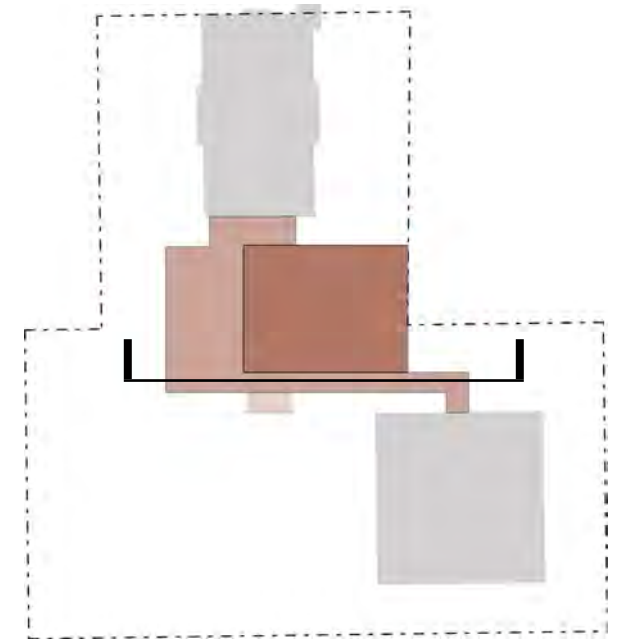
EAST ELEVATION

KEY SCALE : 1/32" = 1'-0"



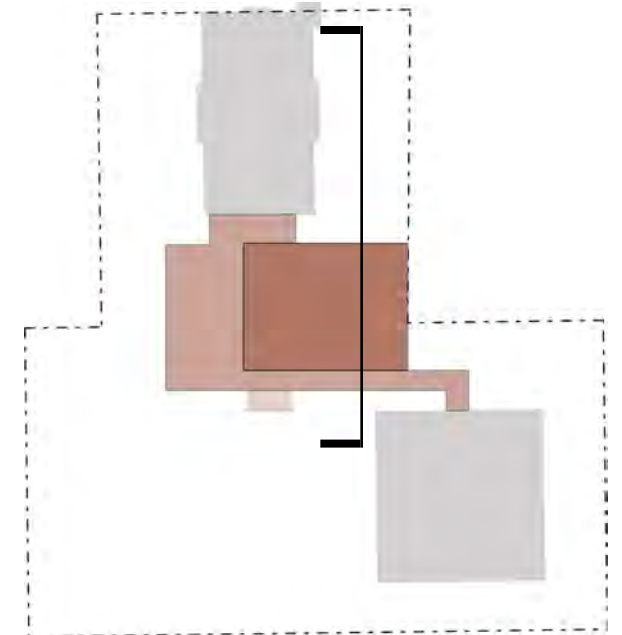
SECTION THROUGH LIGHT WELL

SCALE: 1/16" = 1' = 0"



SECTION THROUGH BOX B

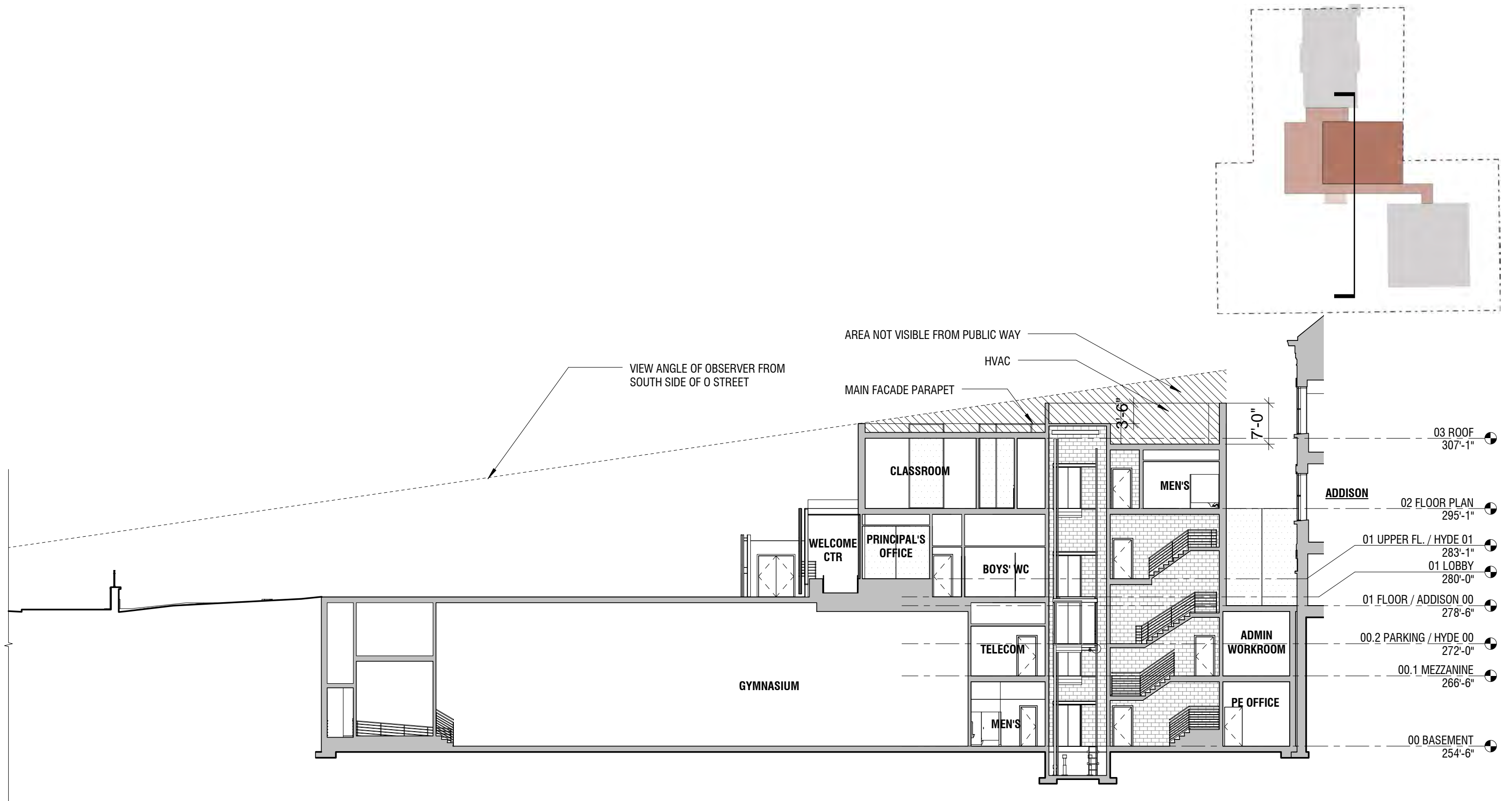
SCALE: 1/16" = 1' = 0"



SECTION THROUGH PARKING RAMP

SCALE: 1/16" = 1' = 0"





SECTION THROUGH MECHANICAL EQUIPMENT

SCALE: 1/16" = 1'-0"



HYDE CONNECTOR: NORTH ELEVATION

SCALE: 1/8" = 1'-0"



**ADDISON CONNECTOR: SOUTH ELEVATION**

SCALE: 1/8" = 1'-0"



VIEW FROM O STREET GATE



VIEW FROM MAIN GATE



## VIEW OF THE ENTRANCE

**HYDE ADDISON ELEMENTARY**  
3216 O STREET NW, Washington, D.C. 20007



VIEW FROM P STREET