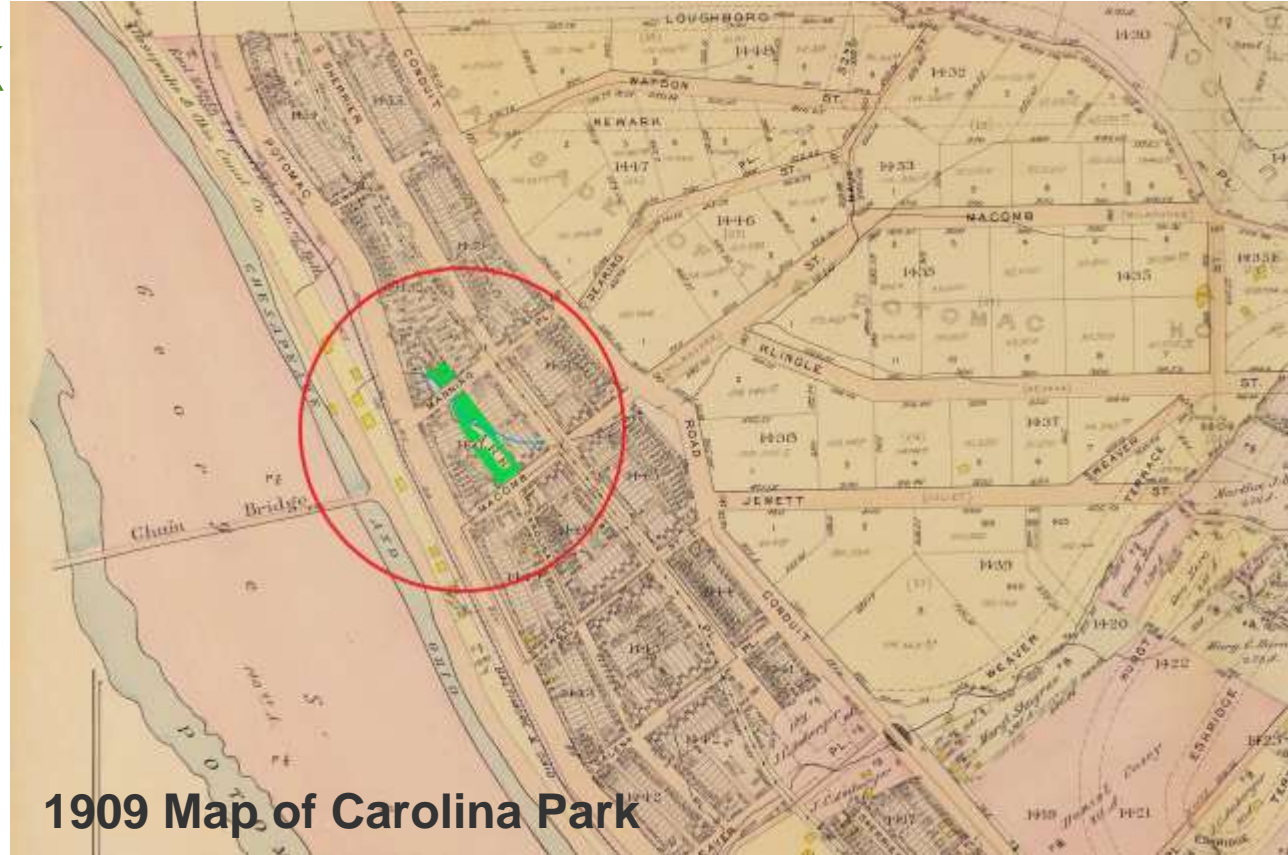


Carolina Park

Community Meeting



1909 Map of Carolina Park

Thursday, November 21, 2019



Rules of the Road:

Welcome! Thank you for your participation.

- Please Hold all questions until the end of the presentation.
- Sign-In Before you leave.

Agenda:

1. Team Introduction and Update
2. Project Overview
3. Community Engagement Process
4. Existing Site
5. Conceptual Landscape Plans
6. Playground Options
7. Next Steps
8. Community Feedback
9. Contact Information



Project Team:



Palisades Skate Park



Washington Canal Park



Burrville Elementary Playground



MLK Elementary Playground



Dorothy Heights Playground

Project Overview:

Scope of Work:

- New Nature Inspired Playground Equipment
- Engineered Wood Fiber (EWF) Resurfacing
- Site Furnishings (New Benches, etc.)
- New Site Signage
- Maintain Existing Trees and Natural Elements
- Create ADA Accessible Route to Playground
- Improve Alternate walking/hiking trails



Example: Nature Inspired Climber

Community Engagement Process :

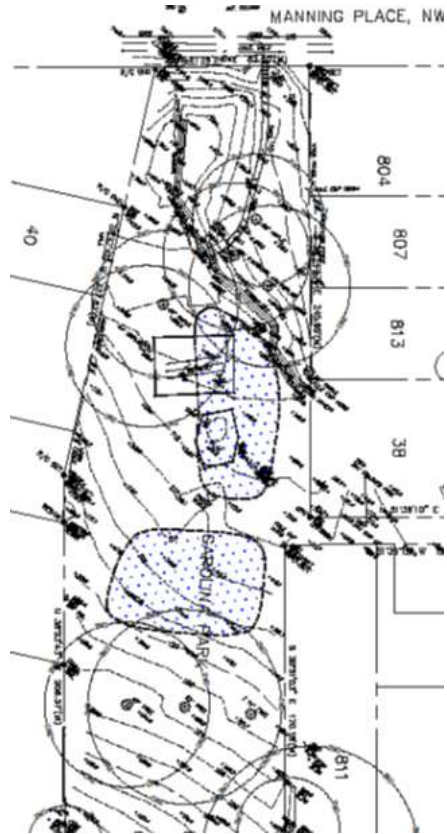


- Community Meetings
- Project webpage for Carolina Park:
<https://dgs.dc.gov/page/carolina-park-renovation>
- Email updates (please sign-in with legible email address)

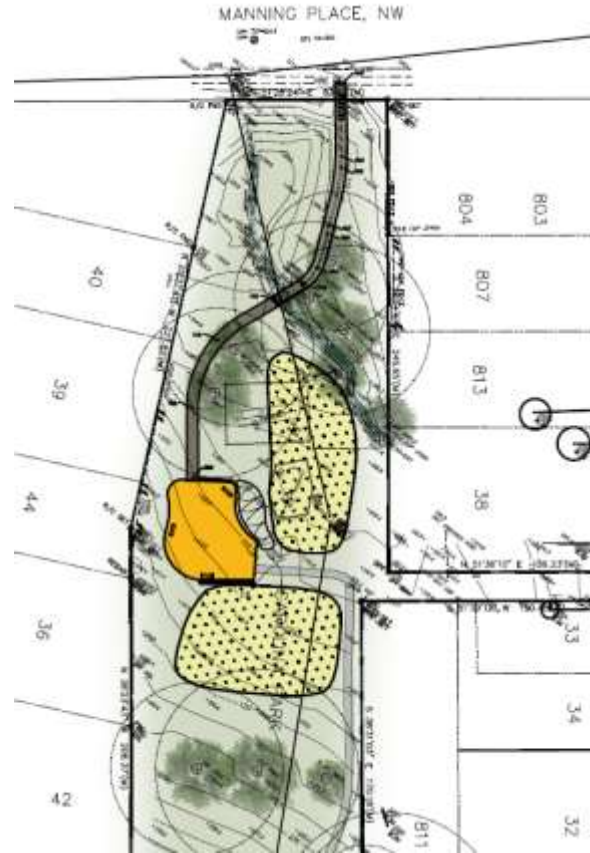
Existing Conditions



Existing Conditions



Play Area Option #1



Play Area Option #2



Play Area Option #3



ADA Boardwalk Examples





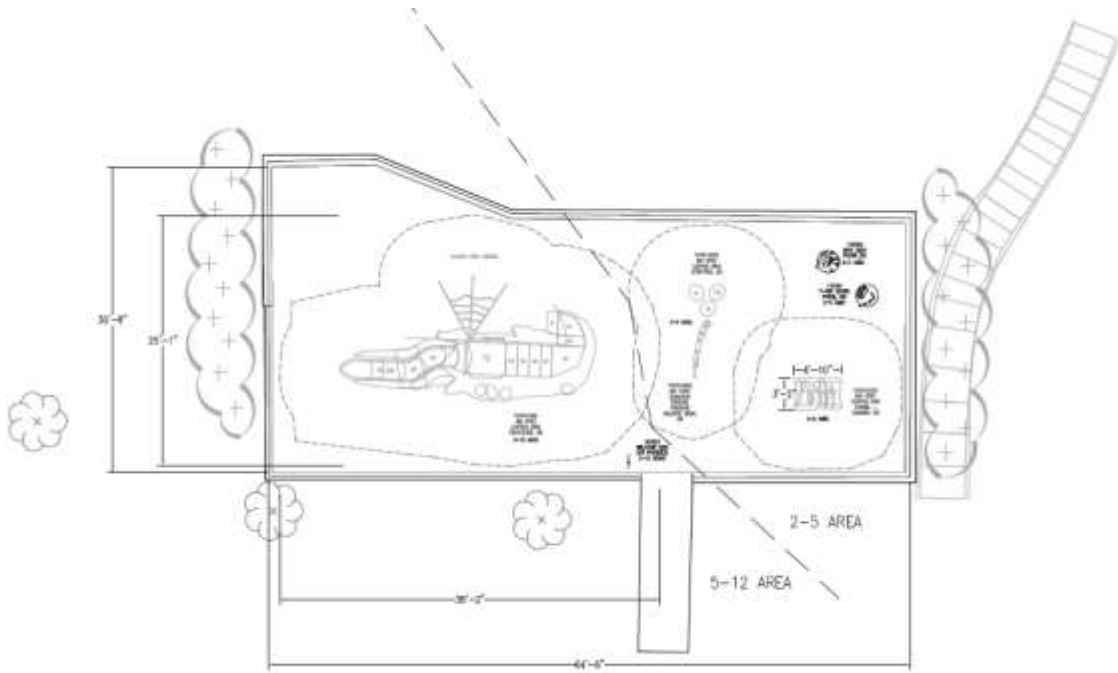
ADA Boardwalk Examples



Park ID Sign Name Example:



Playground Option 1



Playground Option 1

Dinosaur Structure

Design Details #1142517-01-02
Custom GFRP Dimensional Dinosaur
Approximately 26' L x 7' 11" W x 17' H
Multiple sections

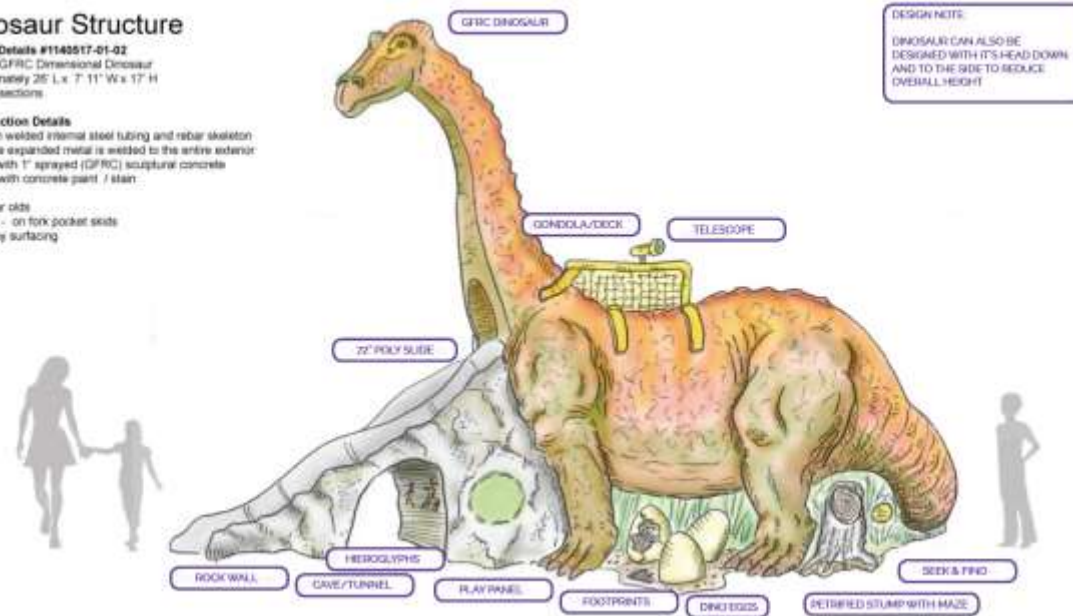
Construction Details

Built with welded internal steel tubing and rebar skeleton
18 gauge expanded metal is welded to the entire exterior
Coated with 1" sprayed (GFRP) sculptural concrete
Painted with concrete paint / stain

5-12 year olds
12" duty - on fork pocket slide
ENF play surfacing

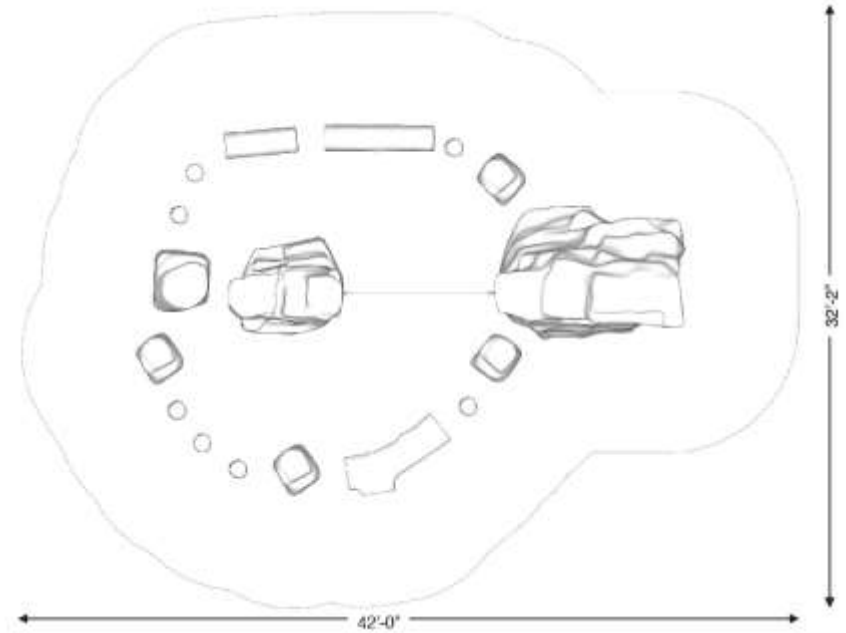


LOG CRAWL TUNNEL



DESIGN NOTE:
DINOSAUR CAN ALSO BE
DESIGNED WITH ITS HEAD DOWN
AND TO THE SIDE TO REDUCE
OVERALL HEIGHT

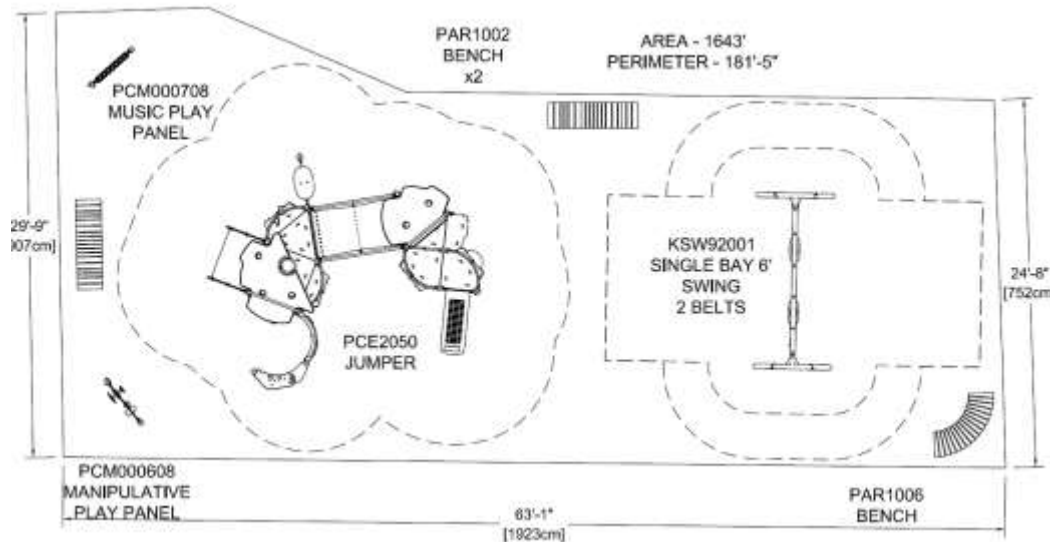
Playground Option 2



Playground Option 2



Playground Option 3



Playground Option 3



Questions?



Next Steps:

This presentation will be sent to all attendees and will be posted to the DGS Capital Construction page at: <https://dgs.dc.gov/page/carolina-park-renovation>

- Continue drawings for further analysis
- Host another community meeting

Contact Information

Department of General Services (DGS)

Wayne Gore, Community Engagement and Outreach
wayne.gore@dc.gov

Department of Parks & Recreation (DPR)

Peter Nohrden, ASLA / Project Manager
peter.nohrden@dc.gov