

ICOR_{LTD}

VIA EMAIL

October 22, 2021

Vijay R. Kasimsetty
Consys, Inc.
732 Kennedy Street, NW
Washington, DC 20011

Subject: Soil Sampling & Testing Results, OSSE Bus Terminal Property, 1601 W Street, NE, Washington DC

Pursuant to your request, Icor Ltd. (ICOR) collected soil samples for laboratory analysis from suspect contaminated soil present in two (2) locations at the above referenced property in Northeast, Washington, DC. Soil samples were collected from two areas where suspect contaminated soil was identified (Building C & Building B). A composite soil sample was collected from each area and submitted to HP Environmental Laboratories (HP) for chemical analysis. The samples were analyzed for Diesel and Gasoline Range total petroleum hydrocarbons (TPH-DRO & TPH-GRO, respectively) using EPA Method 8015 and for Semi Volatile Organic Compounds (SVOCs) using EPA Method 8270. A figure depicting the sampling locations is attached.

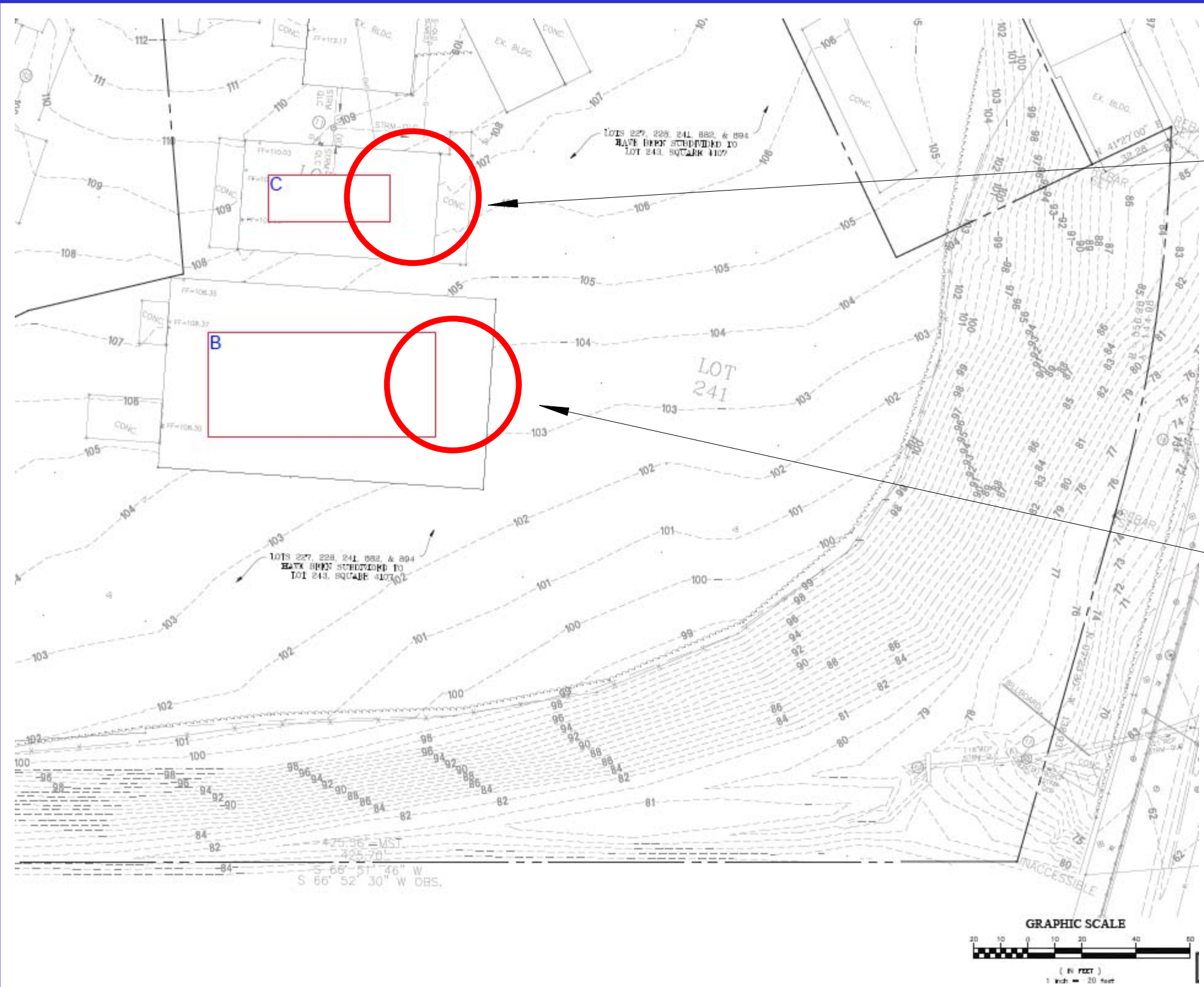
Diesel range TPH were detected in sample Building C & Sample Building B at concentrations of 46 milligrams per kilogram (mg/kg) and 1400 mg/kg, respectively. TCLP Metals Barium and Lead were detected in samples Building C & Building B at concentrations of 1.3 milligrams per liter (mg/L) and 0.43 mg/L (Barium) and 0.69 mg/L and 0.95 mg/L (lead). No other compounds were detected in the samples. A copy of the laboratory results is attached.

ICOR recommends that excavated soil from both areas be properly disposed.

Sincerely,



Ike L. Singh
Project Manager



Building C Sampling Location

Building C Sampling Location

SITE PLAN WITH SOIL SAMPLING LOCATIONS

DESIGNED	singh	DATE	11/13/21	OSSE Bus Terminal Property 1601 W Street, NE Washington, DC	
JOB NO.				SCALE:	1"=20'
				FIGURE	1

**Certificate of Laboratory Analysis**

ICOR
Ike Singh
P.O. Box 406
Middleburg, VA 20118

Report Number: **215566**
Date Received: 11/08/21
Date Reported: 11/09/21
Project Location: Consys- 1601 W St NE

Client Sample No: **Bldg B Disposal**
Sample Matrix: Soil
Sample Description:

Lab Sample No.: 215566-01
Collection Date/Time: 11/05/21 10:30

Volatile Organic Compounds (BTEX)

Preparation & Analysis Method: EPA 5030 EPA 8260

Analyte	Result	Units	Limit	Dilution	Qualifier	Cont.	Prep. Date	Analysis Date	Analyst
Benzene	< 5.0	ug/Kg	5.0	1	U	A	11/08/21	11/08/21	JP
Toluene	< 5.0	ug/Kg	5.0	1	U	A	11/08/21	11/08/21	JP
Ethylbenzene	< 5.0	ug/Kg	5.0	1	U	A	11/08/21	11/08/21	JP
m,p-Xylene	< 5.0	ug/Kg	5.0	1	U	A	11/08/21	11/08/21	JP
o-Xylene	< 5.0	ug/Kg	5.0	1	U	A	11/08/21	11/08/21	JP

TPH - Gasoline Range Organics

Preparation & Analysis Method: EPA 5030 EPA 8015

Analyte	Result	Units	Limit	Dilution	Qualifier	Cont.	Prep. Date	Analysis Date	Analyst
TPH - GRO	< 0.5	mg/Kg	0.5	1	U	A	11/08/21	11/08/21	JP

TPH - Diesel Range Organics

Preparation & Analysis Method: EPA 3550 EPA 8015

Analyte	Result	Units	Limit	Dilution	Qualifier	Cont.	Prep. Date	Analysis Date	Analyst
TPH - DRO	46	mg/Kg	10	1		B	11/08/21	11/08/21	JB

PCB's

Preparation & Analysis Method: EPA 3550 EPA 8082

Analyte	Result	Units	Limit	Dilution	Qualifier	Cont.	Prep. Date	Analysis Date	Analyst
Aroclor-1016	< 80	ug/Kg	80	1	U	B	11/08/21	11/09/21	JP
Aroclor-1221	< 80	ug/Kg	80	1	U	B	11/08/21	11/09/21	JP
Aroclor-1232	< 80	ug/Kg	80	1	U	B	11/08/21	11/09/21	JP
Aroclor-1242	< 80	ug/Kg	80	1	U	B	11/08/21	11/09/21	JP
Aroclor-1248	< 80	ug/Kg	80	1	U	B	11/08/21	11/09/21	JP
Aroclor-1254	< 80	ug/Kg	80	1	U	B	11/08/21	11/09/21	JP
Aroclor-1260	< 80	ug/Kg	80	1	U	B	11/08/21	11/09/21	JP

**Certificate of Laboratory Analysis**

ICOR
Ike Singh
P.O. Box 406
Middleburg, VA 20118

Report Number: **215566**
Date Received: 11/08/21
Date Reported: 11/09/21
Project Location: Consys- 1601 W St NE

Sample Results Continued -----

Client Sample No:

Bldg B Disposal**TCLP Volatile Organic Compounds**

Preparation & Analysis Method:

EPA 1311

EPA 8260

Analyte	Result	Units	Limit	Dilution	Qualifier	Cont.	Prep. Date	Analysis Date	Analyst
Vinyl Chloride	< 0.05	mg/L	0.05	1	U	A	11/08/21	11/09/21	JP
1,1-Dichloroethene	< 0.05	mg/L	0.05	1	U	A	11/08/21	11/09/21	JP
Chloroform	< 0.05	mg/L	0.05	1	U	A	11/08/21	11/09/21	JP
1,2-Dichloroethane	< 0.05	mg/L	0.05	1	U	A	11/08/21	11/09/21	JP
2-Butanone	< 0.05	mg/L	0.05	1	U	A	11/08/21	11/09/21	JP
Carbon tetrachloride	< 0.05	mg/L	0.05	1	U	A	11/08/21	11/09/21	JP
Trichloroethene	< 0.05	mg/L	0.05	1	U	A	11/08/21	11/09/21	JP
Benzene	< 0.05	mg/L	0.05	1	U	A	11/08/21	11/09/21	JP
Tetrachloroethene	< 0.05	mg/L	0.05	1	U	A	11/08/21	11/09/21	JP
Chlorobenzene	< 0.05	mg/L	0.05	1	U	A	11/08/21	11/09/21	JP

TCLP Semivolatile Organic Compounds

Preparation & Analysis Method:

EPA 1311

EPA 8270

Analyte	Result	Units	Limit	Dilution	Qualifier	Cont.	Prep. Date	Analysis Date	Analyst
Pyridine	< 0.02	mg/L	0.02	1	U	A	11/08/21	11/09/21	JP
1,4-Dichlorobenzene	< 0.02	mg/L	0.02	1	U	A	11/08/21	11/09/21	JP
o-Cresol	< 0.02	mg/L	0.02	1	U	A	11/08/21	11/09/21	JP
m-Cresol	< 0.02	mg/L	0.02	1	U	A	11/08/21	11/09/21	JP
p-Cresol	< 0.02	mg/L	0.02	1	U	A	11/08/21	11/09/21	JP
Hexachloroethane	< 0.02	mg/L	0.02	1	U	A	11/08/21	11/09/21	JP
Nitrobenzene	< 0.02	mg/L	0.02	1	U	A	11/08/21	11/09/21	JP
Hexachlorobutadiene	< 0.02	mg/L	0.02	1	U	A	11/08/21	11/09/21	JP
2,4,6-Trichlorophenol	< 0.02	mg/L	0.02	1	U	A	11/08/21	11/09/21	JP
2,4,5-Trichlorophenol	< 0.02	mg/L	0.02	1	U	A	11/08/21	11/09/21	JP
2,4-Dinitrotoluene	< 0.02	mg/L	0.02	1	U	A	11/08/21	11/09/21	JP
Hexachlorobenzene	< 0.02	mg/L	0.02	1	U	A	11/08/21	11/09/21	JP
Pentachlorophenol	< 0.02	mg/L	0.02	1	U	A	11/08/21	11/09/21	JP

TCLP Metals

Preparation & Analysis Method:

EPA 1311

EPA 6010

Analyte	Result	Units	Limit	Dilution	Qualifier	Cont.	Prep. Date	Analysis Date	Analyst
Arsenic	< 0.10	mg/L	0.10	1	U	A	11/08/21	11/09/21	JB
Barium	1.3	mg/L	0.10	1		A	11/08/21	11/09/21	JB
Cadmium	< 0.10	mg/L	0.10	1	U	A	11/08/21	11/09/21	JB
Chromium	< 0.10	mg/L	0.10	1	U	A	11/08/21	11/09/21	JB
Lead	0.69	mg/L	0.10	1		A	11/08/21	11/09/21	JB
Mercury	< 0.01	mg/L	0.01	1	U	A	11/08/21	11/09/21	JB
Selenium	< 0.10	mg/L	0.10	1	U	A	11/08/21	11/09/21	JB
Silver	< 0.10	mg/L	0.10	1	U	A	11/08/21	11/09/21	JB

**Certificate of Laboratory Analysis**

ICOR
Ike Singh
P.O. Box 406
Middleburg, VA 20118

Report Number: **215566**
Date Received: 11/08/21
Date Reported: 11/09/21
Project Location: Consys- 1601 W St NE

Client Sample No: **Bldg C Disposal**
Sample Matrix: Soil
Sample Description:

Lab Sample No.: 215566-02
Collection Date/Time: 11/05/21 10:45

Volatile Organic Compounds (BTEX)

Preparation & Analysis Method:

EPA 5030

EPA 8260

Analyte	Result	Units	Limit	Dilution	Qualifier	Cont.	Prep. Date	Analysis Date	Analyst
Benzene	< 5.0	ug/Kg	5.0	1	U	A	11/08/21	11/08/21	JP
Toluene	< 5.0	ug/Kg	5.0	1	U	A	11/08/21	11/08/21	JP
Ethylbenzene	< 5.0	ug/Kg	5.0	1	U	A	11/08/21	11/08/21	JP
m,p-Xylene	< 5.0	ug/Kg	5.0	1	U	A	11/08/21	11/08/21	JP
o-Xylene	< 5.0	ug/Kg	5.0	1	U	A	11/08/21	11/08/21	JP

TPH - Gasoline Range Organics

Preparation & Analysis Method:

EPA 5030

EPA 8015

Analyte	Result	Units	Limit	Dilution	Qualifier	Cont.	Prep. Date	Analysis Date	Analyst
TPH - GRO	< 0.5	mg/Kg	0.5	1	U	A	11/08/21	11/08/21	JP

TPH - Diesel Range Organics

Preparation & Analysis Method:

EPA 3550

EPA 8015

Analyte	Result	Units	Limit	Dilution	Qualifier	Cont.	Prep. Date	Analysis Date	Analyst
TPH - DRO	1400	mg/Kg	10	10	DY	B	11/08/21	11/08/21	JB

PCB's

Preparation & Analysis Method:

EPA 3550

EPA 8082

Analyte	Result	Units	Limit	Dilution	Qualifier	Cont.	Prep. Date	Analysis Date	Analyst
Aroclor-1016	< 80	ug/Kg	80	1	U	B	11/08/21	11/09/21	JP
Aroclor-1221	< 80	ug/Kg	80	1	U	B	11/08/21	11/09/21	JP
Aroclor-1232	< 80	ug/Kg	80	1	U	B	11/08/21	11/09/21	JP
Aroclor-1242	< 80	ug/Kg	80	1	U	B	11/08/21	11/09/21	JP
Aroclor-1248	< 80	ug/Kg	80	1	U	B	11/08/21	11/09/21	JP
Aroclor-1254	< 80	ug/Kg	80	1	U	B	11/08/21	11/09/21	JP
Aroclor-1260	< 80	ug/Kg	80	1	U	B	11/08/21	11/09/21	JP

**Certificate of Laboratory Analysis**

ICOR
Ike Singh
P.O. Box 406
Middleburg, VA 20118

Report Number: **215566**
Date Received: 11/08/21
Date Reported: 11/09/21
Project Location: Consys- 1601 W St NE

Sample Results Continued -----

Client Sample No:

Bldg C Disposal**TCLP Volatile Organic Compounds**

Preparation & Analysis Method:

EPA 1311

EPA 8260

Analyte	Result	Units	Limit	Dilution	Qualifier	Cont.	Prep. Date	Analysis Date	Analyst
Vinyl Chloride	< 0.05	mg/L	0.05	1	U	A	11/08/21	11/09/21	JP
1,1-Dichloroethene	< 0.05	mg/L	0.05	1	U	A	11/08/21	11/09/21	JP
Chloroform	< 0.05	mg/L	0.05	1	U	A	11/08/21	11/09/21	JP
1,2-Dichloroethane	< 0.05	mg/L	0.05	1	U	A	11/08/21	11/09/21	JP
2-Butanone	< 0.05	mg/L	0.05	1	U	A	11/08/21	11/09/21	JP
Carbon tetrachloride	< 0.05	mg/L	0.05	1	U	A	11/08/21	11/09/21	JP
Trichloroethene	< 0.05	mg/L	0.05	1	U	A	11/08/21	11/09/21	JP
Benzene	< 0.05	mg/L	0.05	1	U	A	11/08/21	11/09/21	JP
Tetrachloroethene	< 0.05	mg/L	0.05	1	U	A	11/08/21	11/09/21	JP
Chlorobenzene	< 0.05	mg/L	0.05	1	U	A	11/08/21	11/09/21	JP

TCLP Semivolatile Organic Compounds

Preparation & Analysis Method:

EPA 1311

EPA 8270

Analyte	Result	Units	Limit	Dilution	Qualifier	Cont.	Prep. Date	Analysis Date	Analyst
Pyridine	< 0.02	mg/L	0.02	1	U	A	11/08/21	11/09/21	JP
1,4-Dichlorobenzene	< 0.02	mg/L	0.02	1	U	A	11/08/21	11/09/21	JP
o-Cresol	< 0.02	mg/L	0.02	1	U	A	11/08/21	11/09/21	JP
m-Cresol	< 0.02	mg/L	0.02	1	U	A	11/08/21	11/09/21	JP
p-Cresol	< 0.02	mg/L	0.02	1	U	A	11/08/21	11/09/21	JP
Hexachloroethane	< 0.02	mg/L	0.02	1	U	A	11/08/21	11/09/21	JP
Nitrobenzene	< 0.02	mg/L	0.02	1	U	A	11/08/21	11/09/21	JP
Hexachlorobutadiene	< 0.02	mg/L	0.02	1	U	A	11/08/21	11/09/21	JP
2,4,6-Trichlorophenol	< 0.02	mg/L	0.02	1	U	A	11/08/21	11/09/21	JP
2,4,5-Trichlorophenol	< 0.02	mg/L	0.02	1	U	A	11/08/21	11/09/21	JP
2,4-Dinitrotoluene	< 0.02	mg/L	0.02	1	U	A	11/08/21	11/09/21	JP
Hexachlorobenzene	< 0.02	mg/L	0.02	1	U	A	11/08/21	11/09/21	JP
Pentachlorophenol	< 0.02	mg/L	0.02	1	U	A	11/08/21	11/09/21	JP

TCLP Metals

Preparation & Analysis Method:

EPA 1311

EPA 6010

Analyte	Result	Units	Limit	Dilution	Qualifier	Cont.	Prep. Date	Analysis Date	Analyst
Arsenic	< 0.10	mg/L	0.10	1	U	A	11/08/21	11/09/21	JB
Barium	0.43	mg/L	0.10	1		A	11/08/21	11/09/21	JB
Cadmium	< 0.10	mg/L	0.10	1	U	A	11/08/21	11/09/21	JB
Chromium	< 0.10	mg/L	0.10	1	U	A	11/08/21	11/09/21	JB
Lead	0.95	mg/L	0.10	1		A	11/08/21	11/09/21	JB
Mercury	< 0.01	mg/L	0.01	1	U	A	11/08/21	11/09/21	JB
Selenium	< 0.10	mg/L	0.10	1	U	A	11/08/21	11/09/21	JB
Silver	< 0.10	mg/L	0.10	1	U	A	11/08/21	11/09/21	JB



HP ENVIRONMENTAL INCORPORATED
Certificate of Laboratory Analysis

ICOR
Ike Singh
P.O. Box 406
Middleburg, VA 20118

Report Number: **215566**
Date Received: 11/08/21
Date Reported: 11/09/21
Project Location: Consys- 1601 W St NE

Qualifier Codes:

U = Analyte was not detected at or above reporting limit
Y = Sample extract is comprised of hydrocarbons heavier than diesel fuel

Sample Container Codes:

4 oz Glass Jar - Teflon Seal A & B Soil

Notes:

Soil Results are reported on a wet weight basis (as received) unless stated as "dry".
The lab results reflect the measurement of the sample received only and may not be completely representative of the sampled site.
The Client has the responsibility for assessing risk and appropriate data interpretation of the results contained herein.
Laboratory reports issued are intended for the exclusive use by the Client and shall not be reproduced except in its entirety.
The chain-of-custody is a part of the entire analytical report.
Residual sample(s) will be disposed of in three months unless otherwise notified.

Laboratory Report Approved by:

J Pfaff 11/09/21
Laboratory Director, Chemistry Date



HP ENVIRONMENTAL, INC.
 104 Eiden St, Herndon, VA 20170 Phone (703) 471-4200 Fax (703) 471-0020

Environmental Sample Chain-of-Custody Record

Client: ICOR
Address: PO Box 406 Middleburg, Va 20118
Contact: Ike Singh
e-mail: icorenvironmental@gmail.com
Phone: 703 980 8515
Fax:

TURN-AROUND TIME: Routine Rush (24-48hr)
P.O./Job Number: Disposal
SITE: Consys - 1601 W St NE
Sampled by: Ike Singh

Tests Requested
 TPH-DRO EPA 8015 ✓
 TPH-GRO EPA 8015 ✓
 TCLP-VOC ✓
 TCLP SVOC ✓
 BTEX ✓
 RCRA8 Metals ✓
 TCLP ✓
 Pest/HCRA ✓
 PCB ✓

Sample ID	Sample Date MM/DD/YY	Time HH:MM	Comp/Grab	Matrix	Preserv. pH	# Bottles	TPH-DRO EPA 8015		TPH-GRO EPA 8015		TCLP-VOC	TCLP SVOC	BTEX	RCRA8 Metals	TCLP	Pest/HCRA	PCB	Description/Comments
							✓	✓	✓	✓								
Bldg B Disposal	11/05/21	10:30	C	soil		2	✓	✓	✓	✓	✓	✓	✓	✓	✓	✓	✓	✓
Bldg C Disposal	11/05/21	10:45	C	soil		2	✓	✓	✓	✓	✓	✓	✓	✓	✓	✓	✓	✓

Received Condition: [Blank]
Temperature (°C): [Blank]
Mode of Shipment: hand delivered
HPE Report Number: 2155666

Relinquished By: [Signature]
Relinquished Date/Time: [Blank]

Received By: [Signature]
Received Date/Time: [Blank]

Received By Laboratory: Jona 11/21/21 11:45
Received Date/Time: 11/21/21