

CRUMMELL COMMUNITY CENTER

COMMUNITY MEETING
NOVEMBER 29, 2023

RULES OF THE ROAD

WELCOME!

- Please Hold all questions until the end of the presentation.
- Sign-In Before you leave (scan the QR code to the right)



Email List Sign-in
[DPR.DC.GOV/ATTENDEE](https://dpr.dc.gov/attende)



MEETING AGENDA

- 1 Project Recap
- 2 Project Timeline To Date
- 3 Survey Recap
- 4 Concept Design
15 minute Question Break
- 5 Project Schedule
- 6 Next Steps
- 7 Contact Information
- 8 Questions



Alexander Crummell school in Ivy City, DC. by <https://www.facebook.com/FriendsofCrummell/>

TEAM MEMBERS



TOMMIE JONES
DPR Chief of
External Affairs



BRENT SISCO
DPR Project Manager



BRIA WIGFALL
DPR Project Manager



CRAIG JAMES
DGS Project Manager



TEAM MEMBERS



SUMAN SORG
Lead Designer



NATALIE RAMIREZ
Project Manager



ROBERT WIDGER
Senior Architect



LEAH HONG
Designer



PROJECT RECAP/OVERVIEW



PROJECT BUDGET

\$35,000,000



OBJECTIVE

This funding will be used to modernize the existing, historic site of the Crummell School into an all-inclusive amenity for the community.



Alexander Crummell school in Ivy City, DC. [Image](#) by Ted Eytan licensed under [Creative Commons](#).

PROJECT TIMELINE: TO DATE

July 12, 2023 :

Introductory Community Meeting to introduce project team, scope, and budget

August 8, 2023:

Programming Questionnaire released to public

September 14, 2023:

Survey Results (electronic and paper) Combined for review

October 16, 2023:

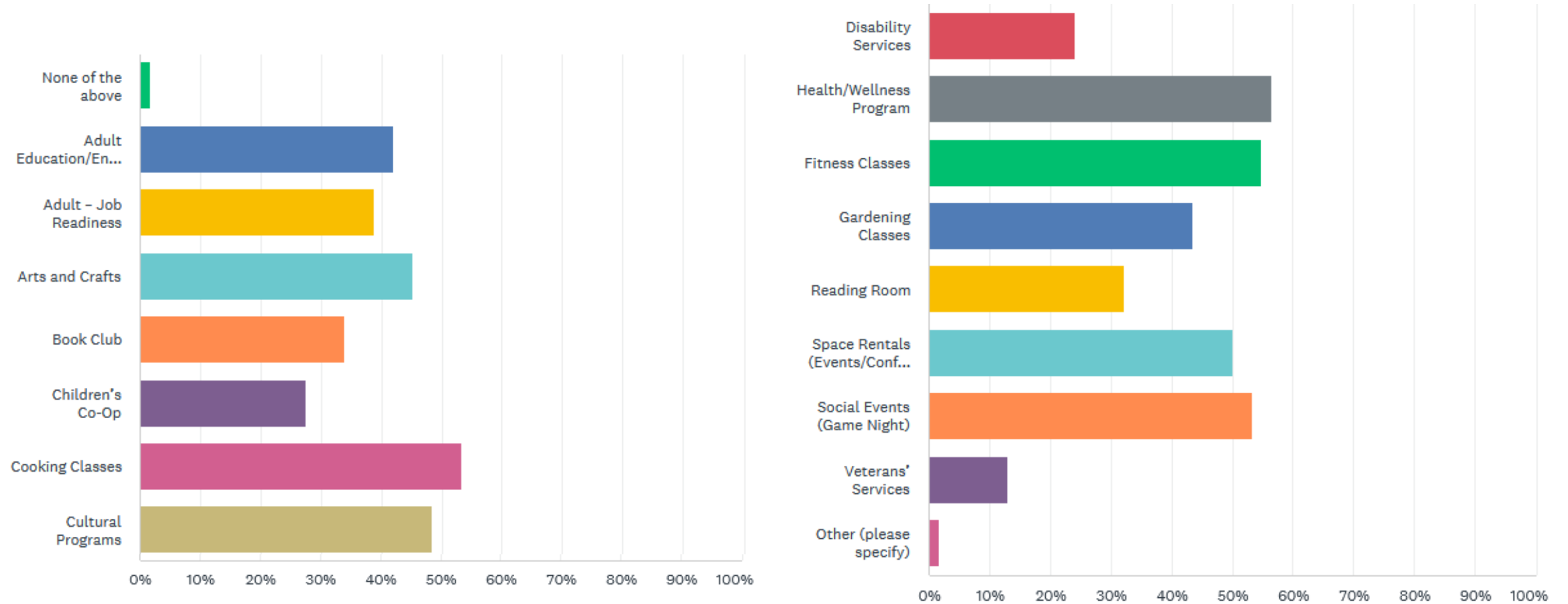
Initial CFA Input on design concept

COMMUNITY SURVEY RECAP

- 82% of respondents live either directly adjacent to or less than a 5 minute walk from Crummell School.
- 85% usually walk to the site. 10% usually drive, 2% usually bike, and 3% usually take public transportation.
- 44% are mostly likely to visit during 9am-5pm, 37% after 5pm, 13% on weekends and holidays, and 6% before 9am.
- The top 5 requested indoor amenities for the new community center are a multipurpose room, a fitness center, a gymnasium, a technology lounge, and a dance/yoga room.
- The top 5 requested outdoor amenities are a splash park, a community garden, a playground, multi-functional sports field, and basketball courts.
- The top concerns for the new community center were site safety/security (63%) and site accessibility (32%).

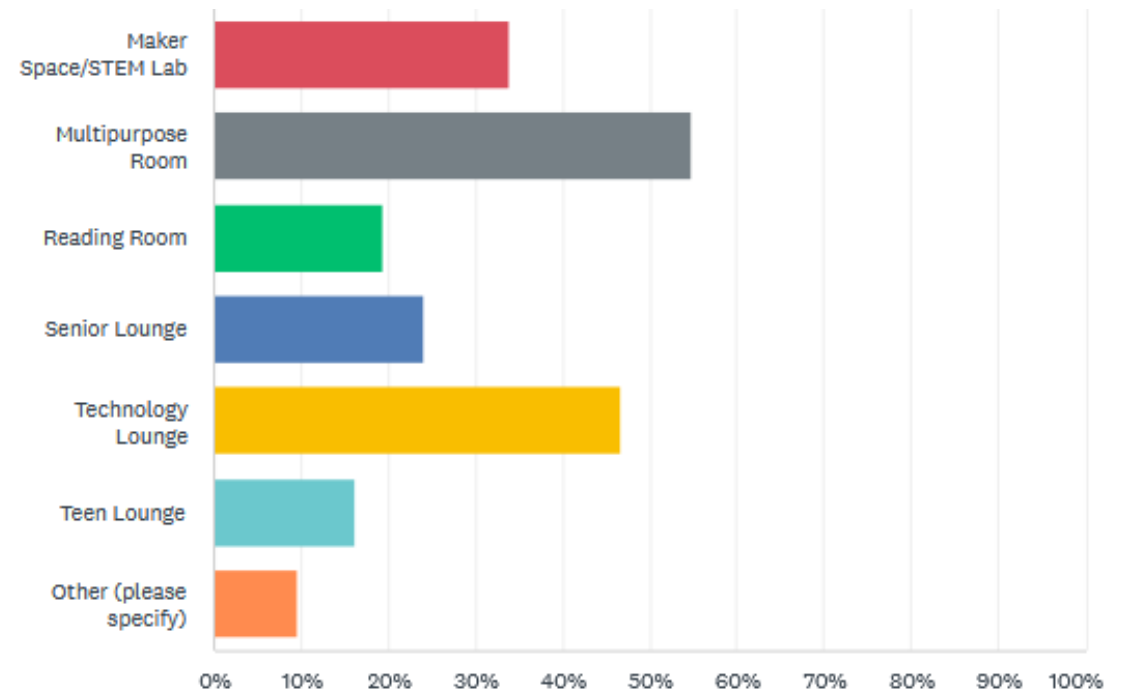
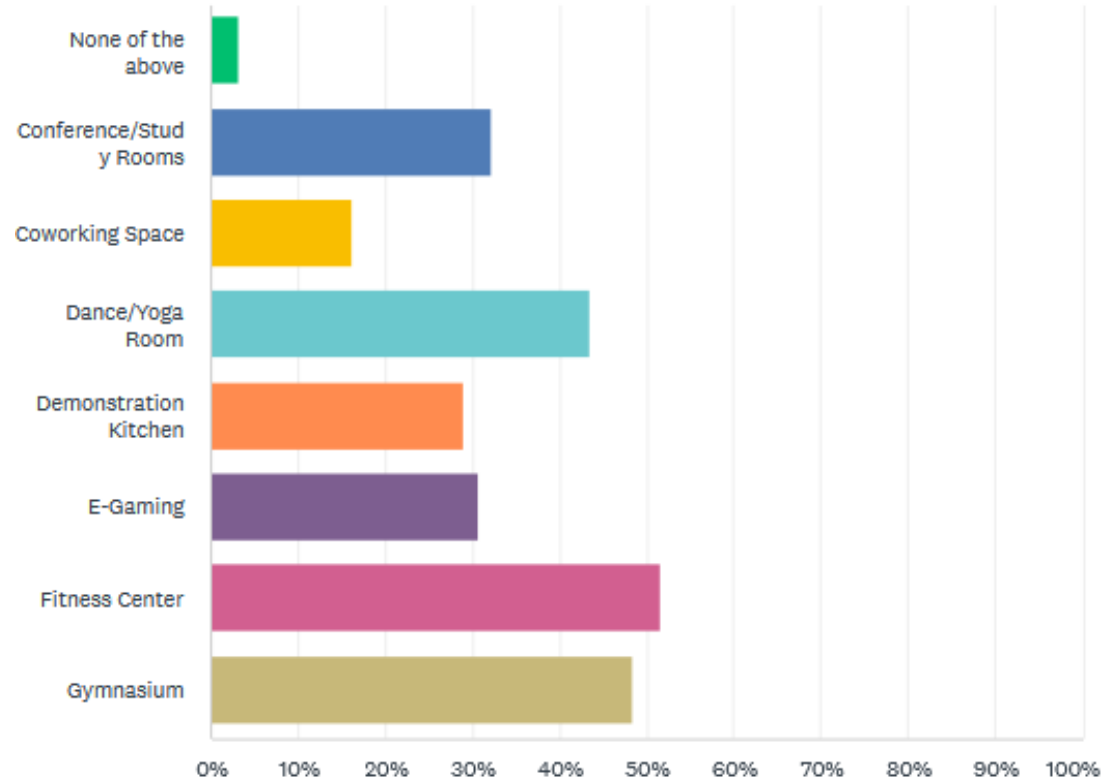
COMMUNITY SURVEY RECAP

Services/Activities Requested



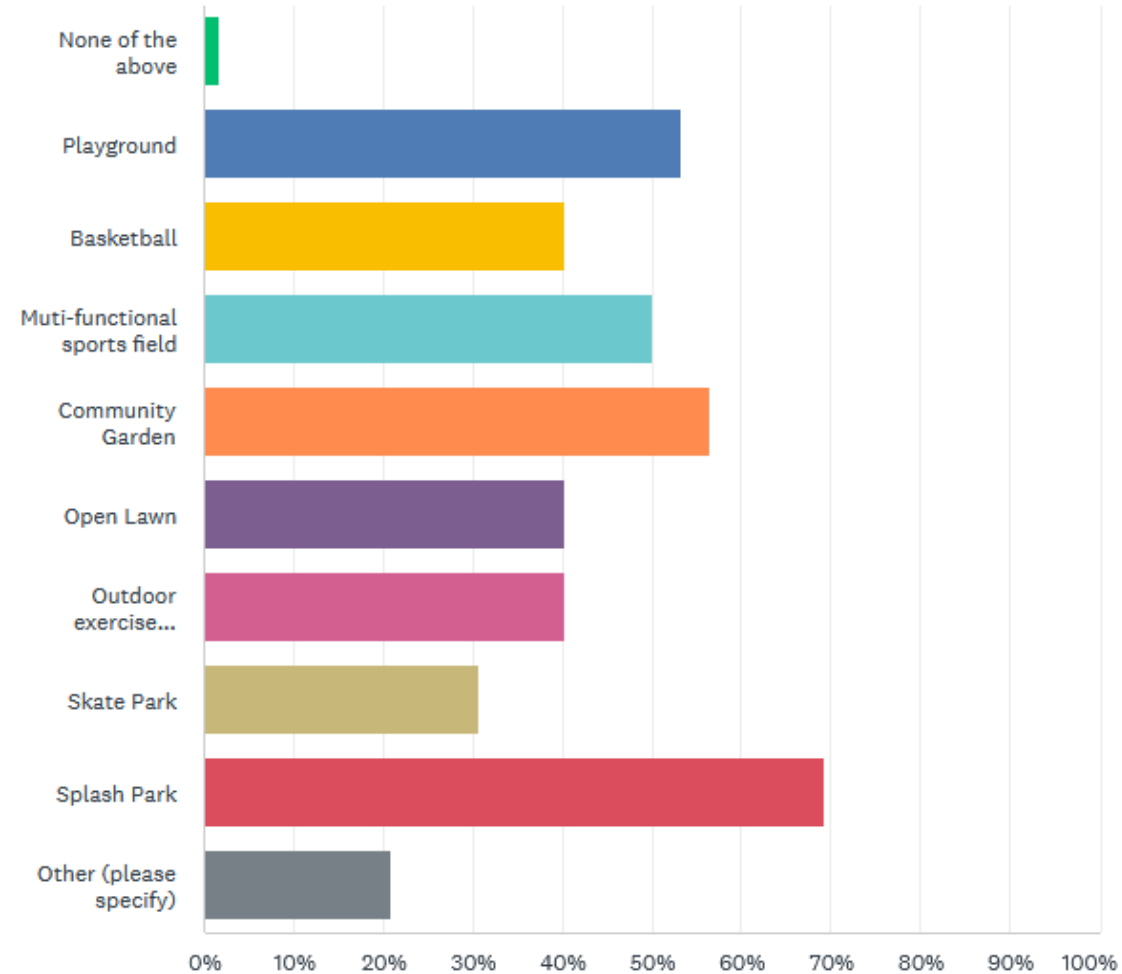
COMMUNITY SURVEY RECAP

Top 5 New Indoor Amenities Requested



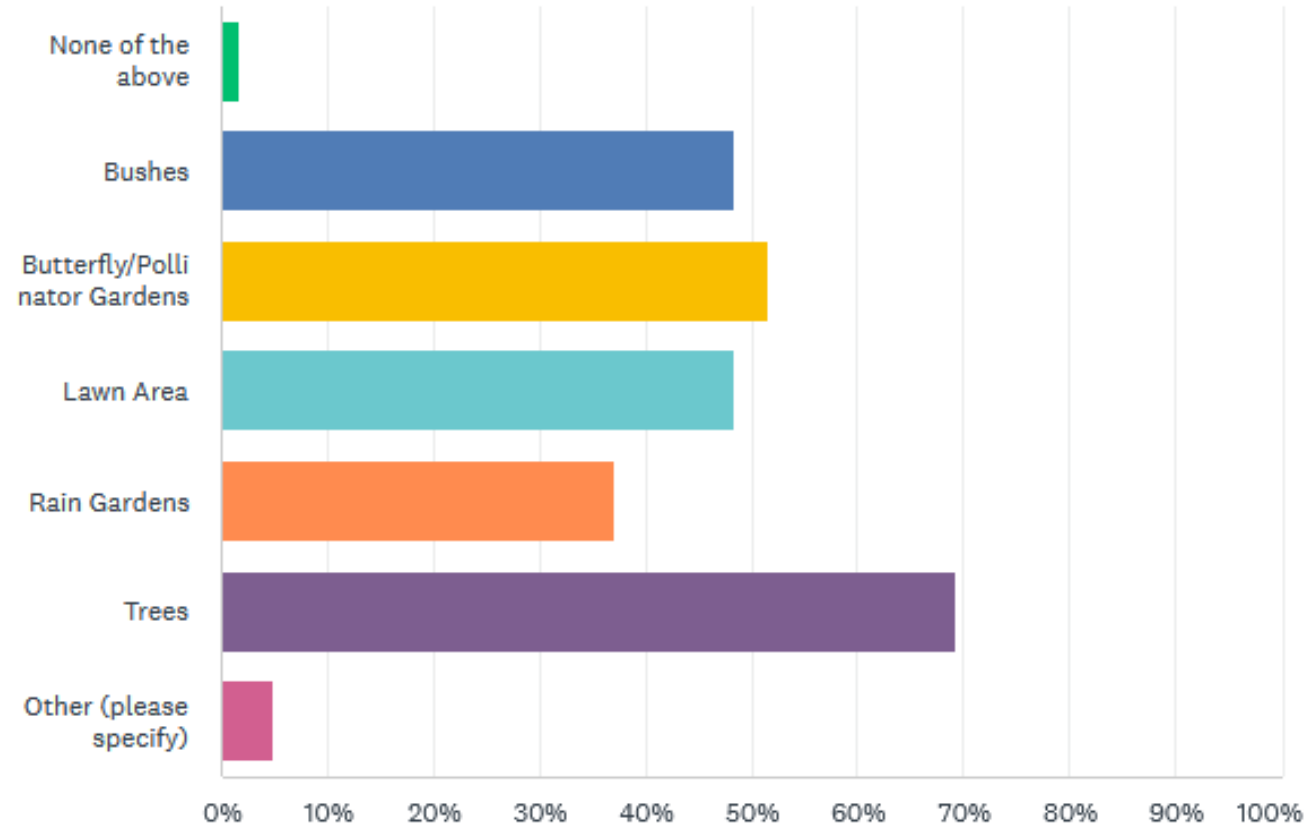
COMMUNITY SURVEY RECAP

Top 5 New Outdoor Amenities Requested



COMMUNITY SURVEY RECAP

Top 3 Landscape Improvements



HISTORIC CONTEXT

Alexander Crummell School

1900 Gallaudet Street, NE, Washington DC

Square: 4042

Lot: 22

Architect: Snowden Ashford

1910: Original Design by municipal architect Snowden Ashford

1911: Constructed by Allan T. Howlson

November 21, 1911: Building is dedicated

1932: Addition of two classrooms and heating plant

1945: Temporary school erected on at 14th and Jackson Streets, N.E. called the Crummell School Annex

1948: Removal of Crummell School Annex due to lack of inside play space

1948: Erection of an eight-room temporary building on the school site

1977: Crummell School closed and was transferred to the Department of General Services

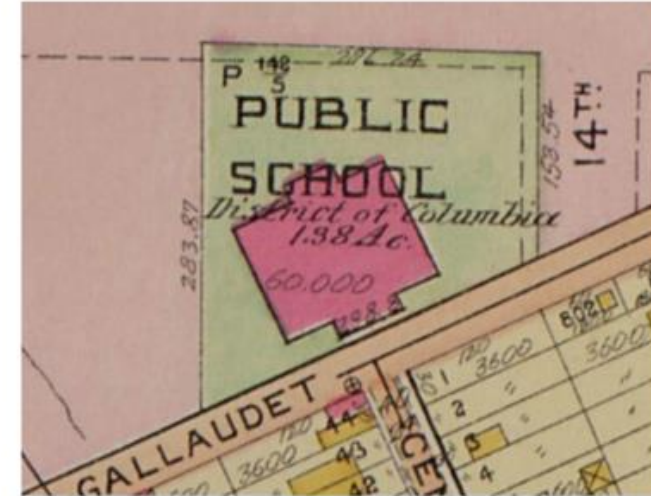
2003: Listed in the National Register of Historic Places



View of Alexander Crummell School, 1900 Gallaudet Street NE, looking SW (EHT Traceries)

HISTORIC CONTEXT

- Constructed in 1911 to replace 1896 wood frame school building that served Ivy City's predominantly African American residents
- Snowden Ashford initially designed the school to be two stories tall, with a partially raised basement, six classrooms, and a meeting hall
- Design was one of the first of Ashford's in his new role as Municipal Architect
- In 1932, the second story was added to the building's rear, replacing the original meeting hall with two extra classrooms
- The Crummell School was named for noted Black abolitionist and intellectual, Alexander Crummell (1819-1898)

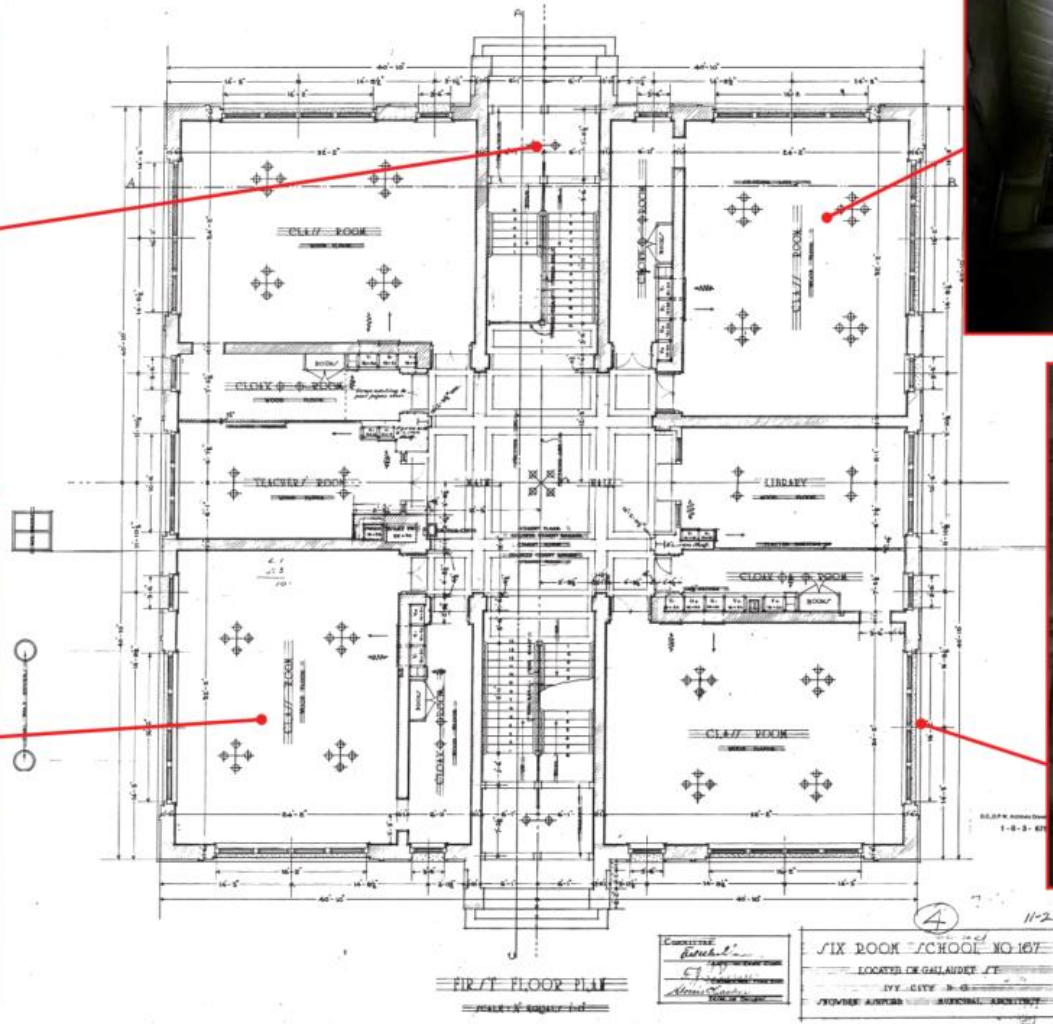


Detail of 1913 Baist map; Baist Atlas; Volume. 4 plate 4. (LOC, 1913)

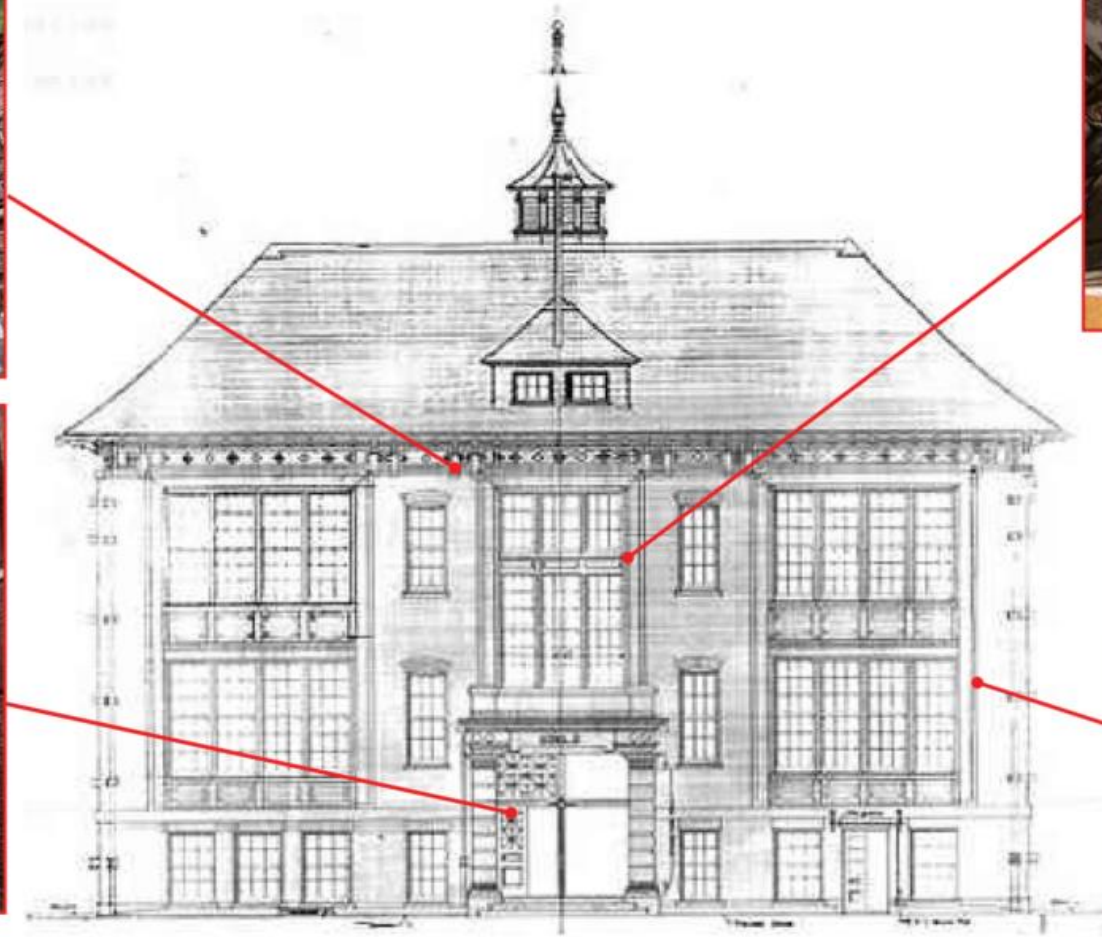


Photo of Alexander Crummell School prior to addition. (DC Public Library, 1911)

EXISTING INTERIORS



EXISTING INTERIORS



South Elevation

PRESERVATION SCOPE



Figure 1: Vegetation growing into the masonry.



Figure 2: South entrance, missing cornice. Note lettering.



Figure 3: Entrance on north elevation.



Figure 4: Basement level window with security screen, infilled with brick.

EXTERIOR

- Clear brickwork of vegetation, debris, and paint, repoint defined areas or percentages (*Figure 1*).
- Remove and replace failing bricks, including at parapet.
- Clean limestone using the gentlest means possible and patch or replace broken sills.
- Restore entrance steps on north and south elevations.
- Restore brickwork at parapet.
- Replace temporary PVC roof system with slate roof.
- Recreate hipped roof dormer on south façade (no longer extant) based on historic drawings.
- Recreate octagonal cupola ventilator (no longer extant) based on historic drawings.
- Replace stones on cornice to match historic drawings.
- Remove brick or CMU infill from all windows (*Figure 4*).
- Replace all windows with wood-clad aluminum windows. Window trim to match historic drawings (*Figure 4*).
- Remove CMU infill and restore or recreate central wood entrance doors on north and south elevations, based on historic drawings (*Figure 3&5*).
- Restore or recreate transom windows above entrance doors.
- Retain and restore historic lettering on parapet at south elevation (*Figure 2*).
- Restore portico on north and south elevations based on historic drawings.
- Recreate missing cornice above entrances on north and south elevations based on historic drawings (*Figure 2*).

PRESERVATION SCOPE



Figure 5: Wooden door at northern entrance.



Figure 6: Glass and metal frame enclosures at southern stair.



Figure 7: Second floor classroom, note intact ceiling.

INTERIOR

- Retain pinwheel configuration on lower level and first floor.
- Recreate one classroom and the central hall on the first floor. Trim, floor finish, ceiling finish, doors, and transoms to match historic drawings.
- Retain and restore glass and metal screens in both stairwells (Figure 6).

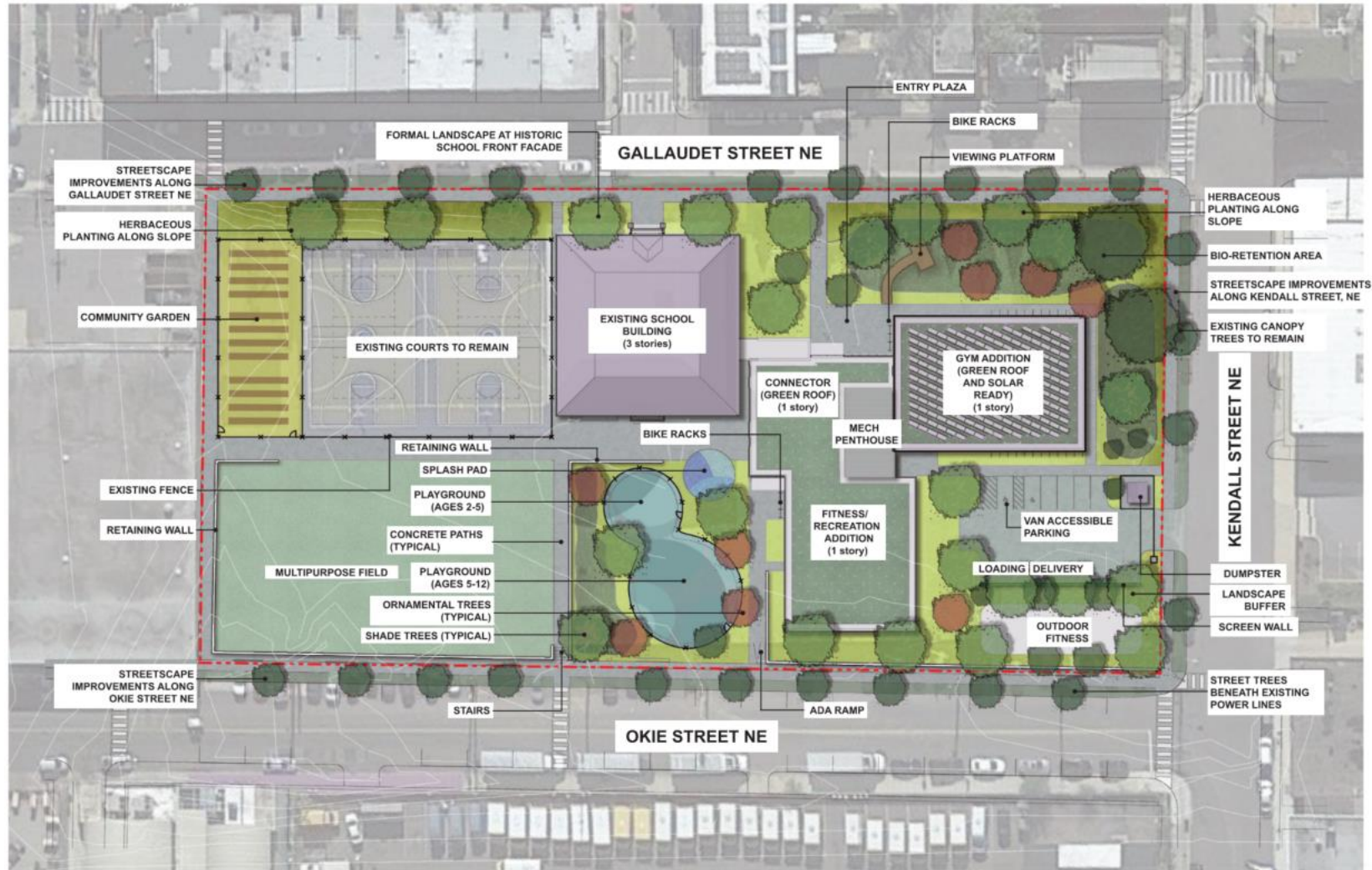
DESIGN PROGRESS

Site Plan



DESIGN PROGRESS

Landscape Plan



DESIGN PROGRESS

Landscape Concepts



SYNTHETIC TURF FIELD



MEDITATION AREA



FORMAL ENTRY LANDSCAPE



BIO-RETENTION AREA



SYNTHETIC TURF FIELD WITH TRACK



POLLINATOR GARDEN



COMMUNITY GARDEN



COMMUNITY GARDEN



SPLASH PAD



SPLASH PAD



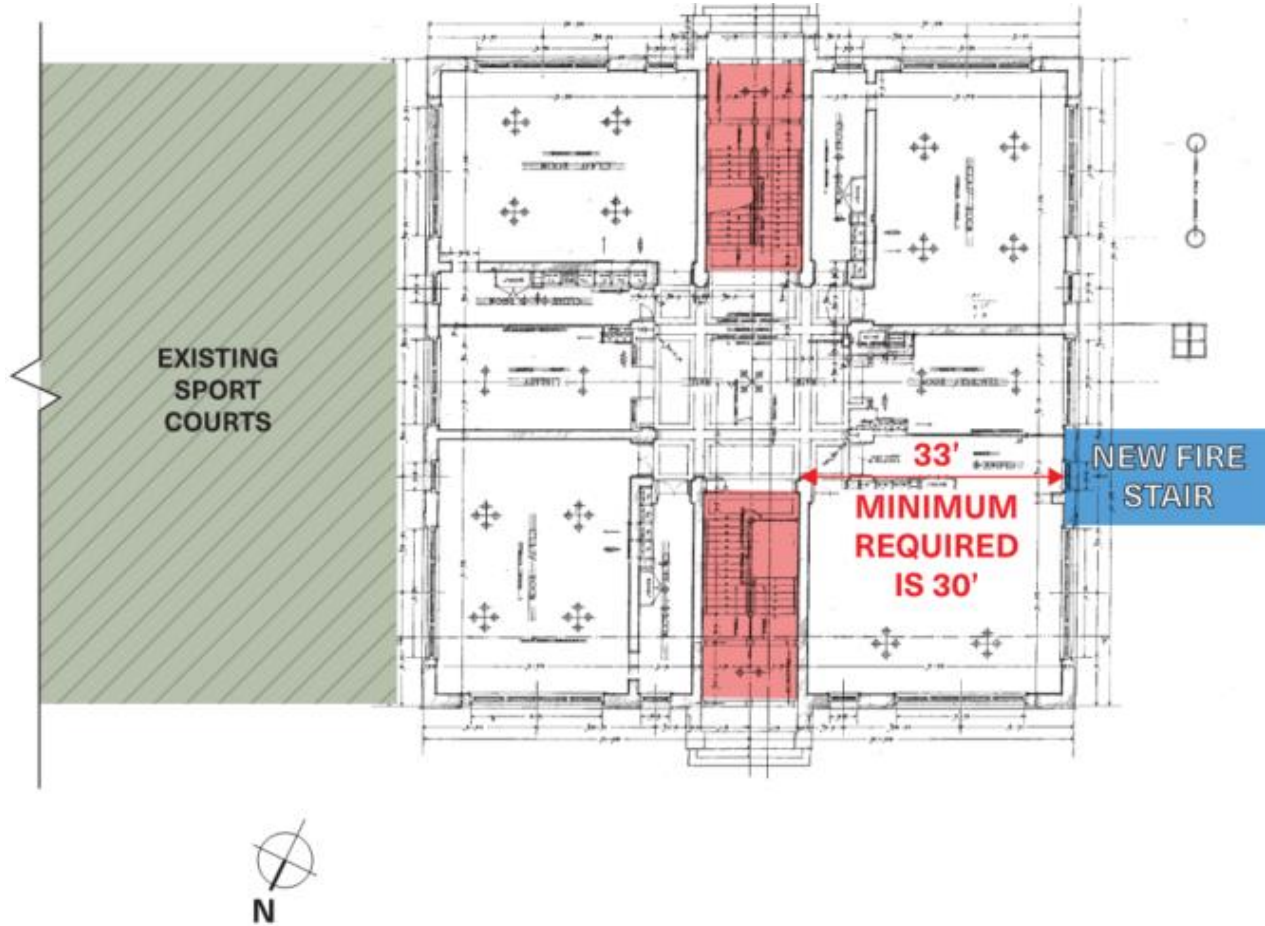
VIEWING PLATFORM



OUTDOOR FITNESS

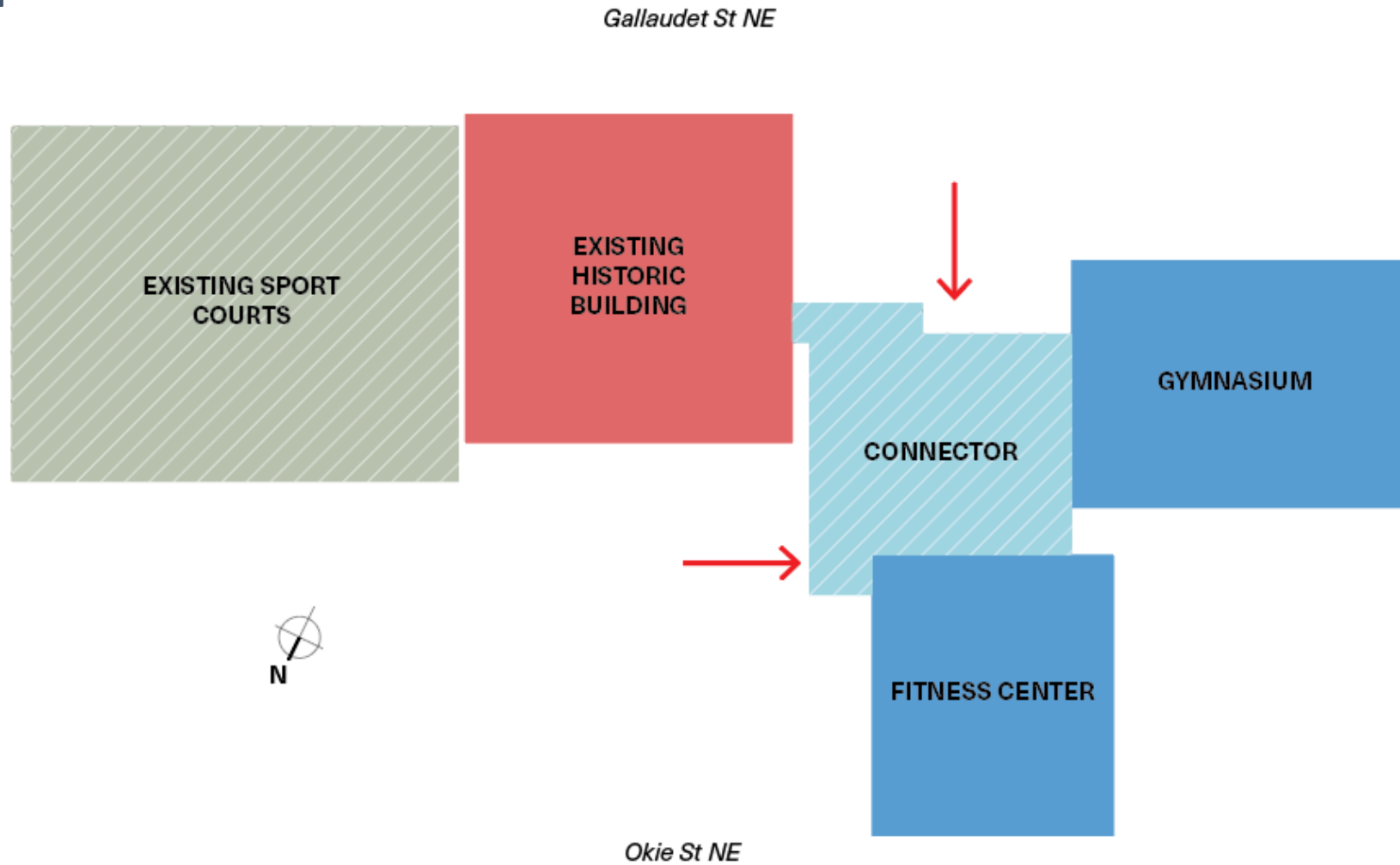
DESIGN PROGRESS

Stair Access Diagram



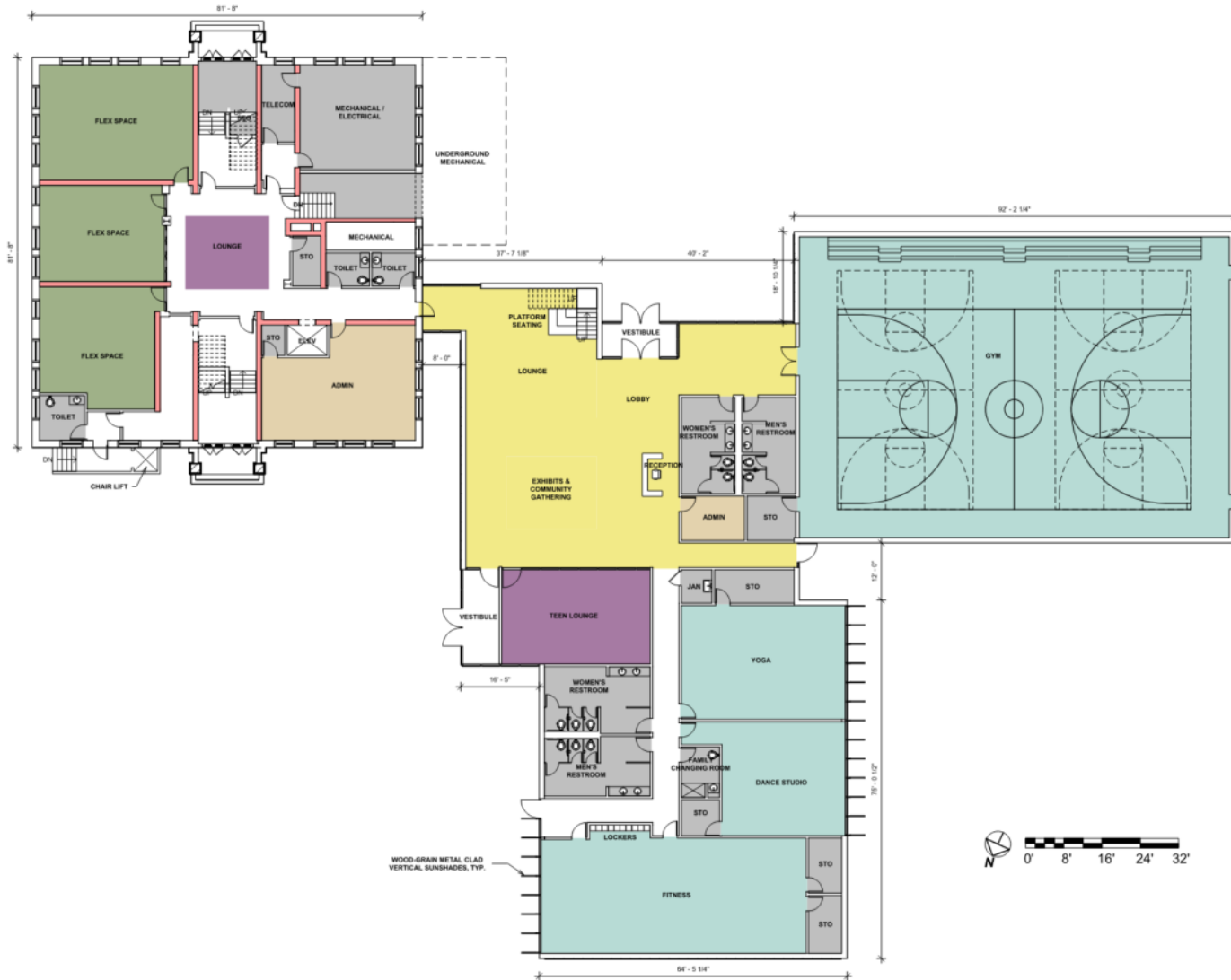
DESIGN PROGRESS

Adjacency Diagram



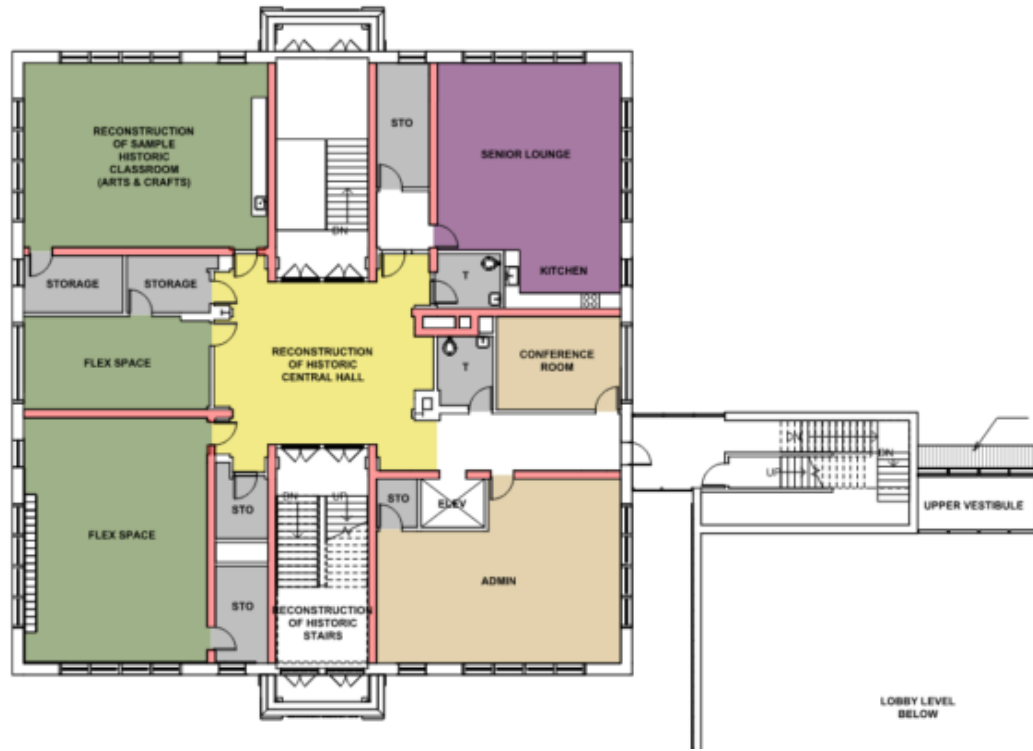
DESIGN PROGRESS

Lower Level Floor Plan

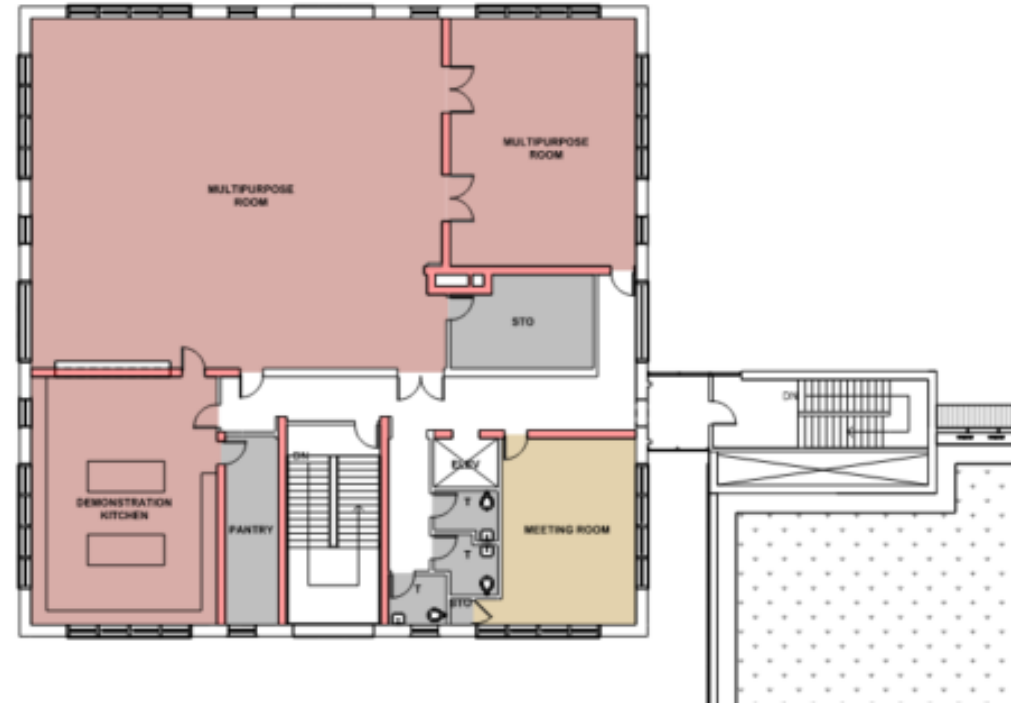


DESIGN PROGRESS

First Floor Plan

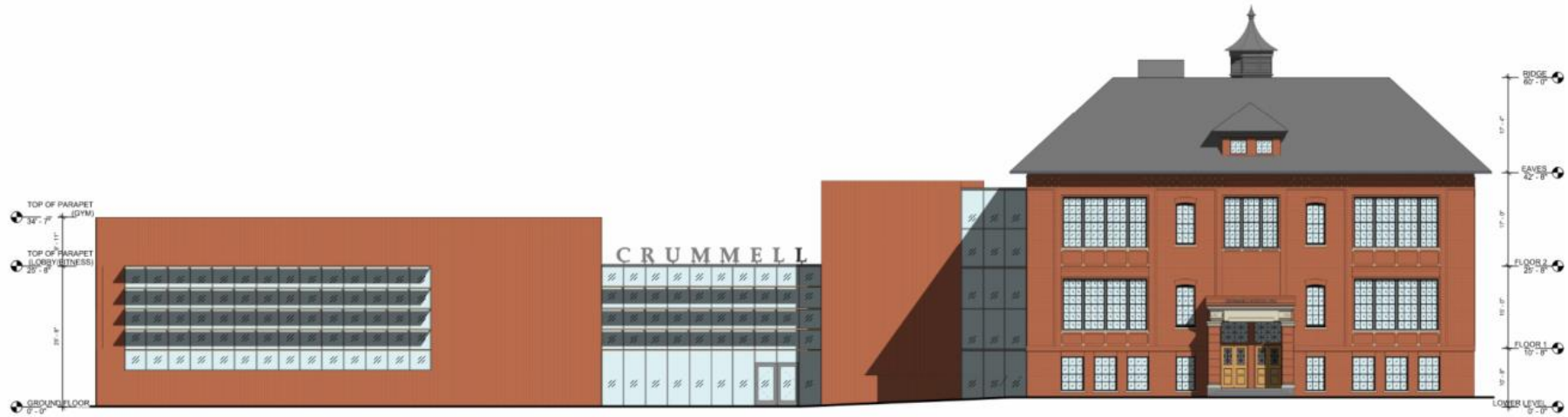


Second Floor Plan

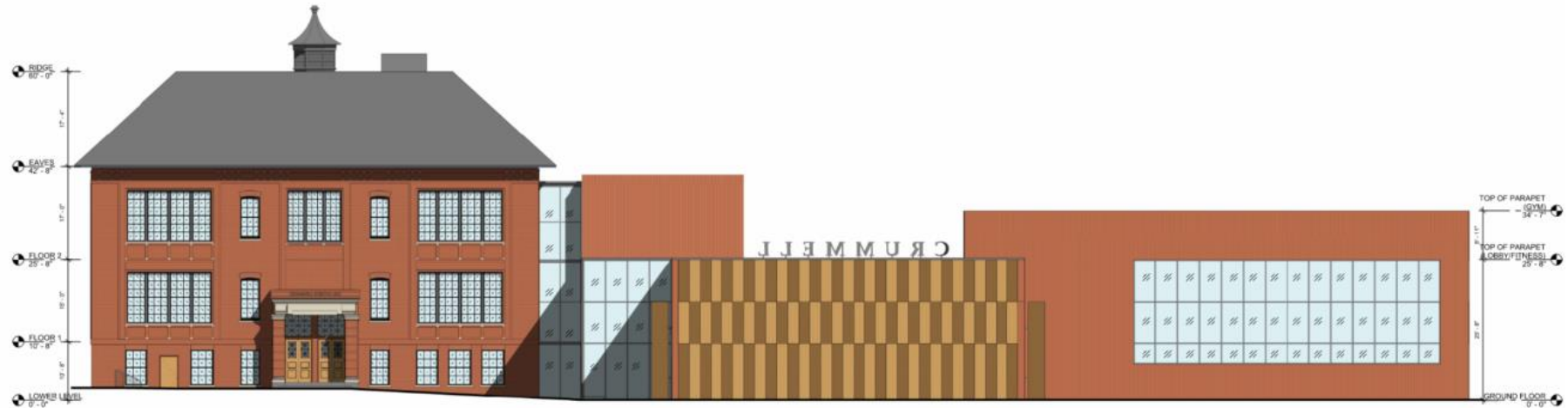


DESIGN PROGRESS

South Elevation



North Elevation



DESIGN PROGRESS

East Elevation



West Elevation



DESIGN PROGRESS

3D Perspective
– Okie St.

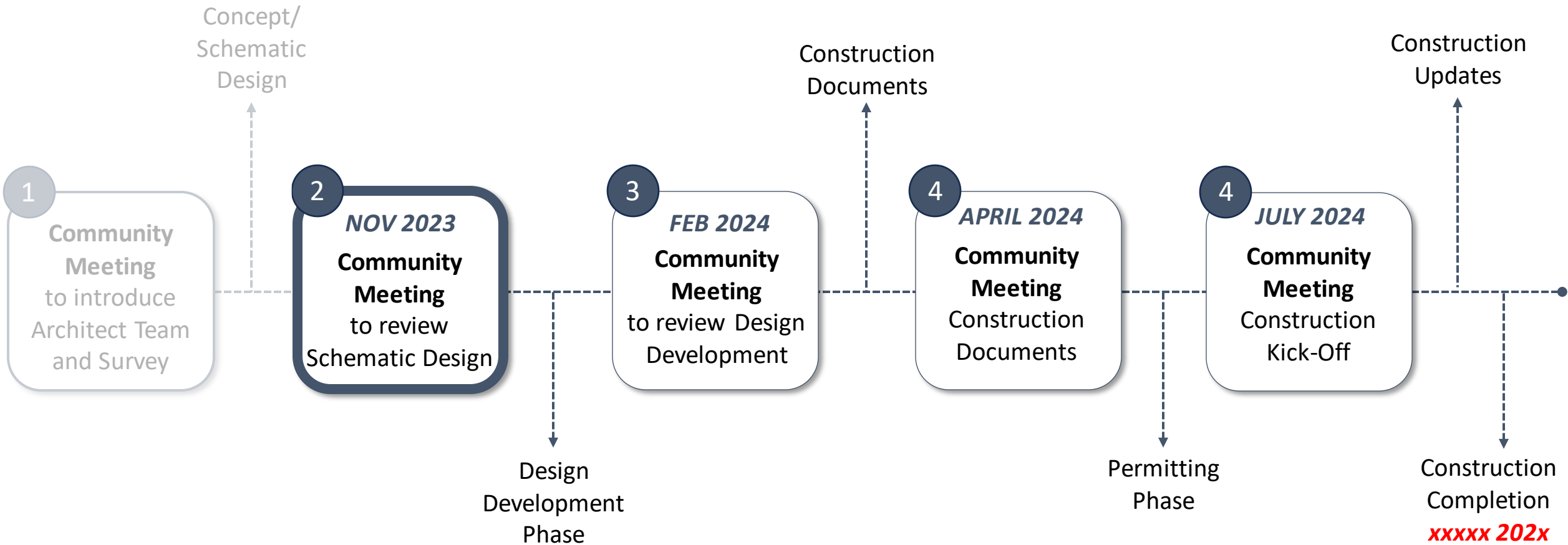


DESIGN PROGRESS

3D Perspective
– Gallaudet St.



PROJECT MILESTONE SCHEDULE



NEXT STEPS

This presentation will be placed on the project website for reference:
<https://dgs.dc.gov/page/new-community-center-historic-crummell-school>

Next Community Meeting
January/February 2024

CONTACT INFORMATION

DEPARTMENT OF GENERAL SERVICES (DGS)

Craig James | Project Manager
Craig.james@dc.gov

DEPARTMENT OF PARKS & RECREATION (DPR)

Brent Sisco | Project Manager
Brent.sisco.@dc.gov

Bria Wigfall | Project Manager
Bria.wigfall@dc.gov

Tommie Jones | Community Engagement and Outreach
Tommie.jones@dc.gov

Project Website:

<https://dgs.dc.gov/page/new-community-center-historic-crummell-school>



THANK YOU!



Graphic provided by Freepik