

**EASTERN MARKET**

# **METRO PARK**

**EMMPAT Meeting  
February 26, 2020**



# Agenda

**01/** Project Status Updates

**02/** Pavilion Design Updates

**03/** Wayfinding Design Updates

**04/** Phase 1 Construction  
Schedule

**05/** Phase 1 Construction  
Plan Coordination

**06/** Revised Phase 1 Limits

**07/** Site Visit To Review  
Existing Benches

# Project Status Updates

*01/*

**Design Development complete**

**NCPC Final Approval  
February 6, 2020**

**Construction Documents  
February –  
March 2020**

**TOPS Resubmission  
February 21, 2020**

*02/*

**Permits  
Fall 2019 –  
February/March 2020**

**Public Space Committee  
Hearing February 27, 2020**

**Groundbreaking  
Ceremony  
Early March 2020**

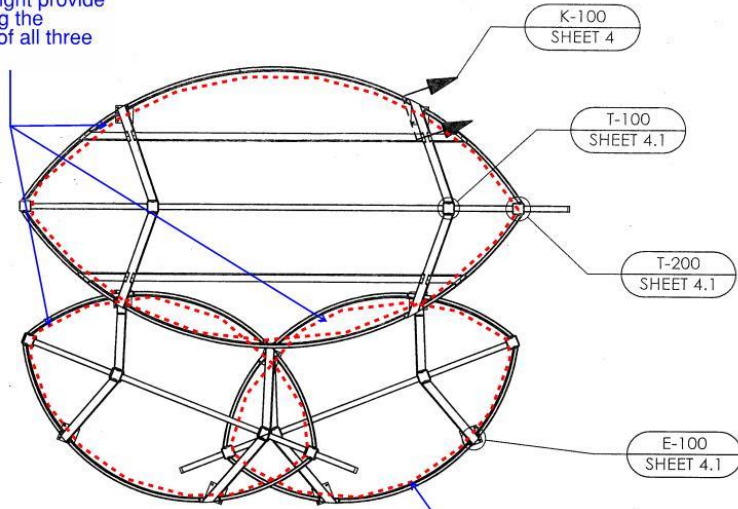
*03/*

**Construction Phase 1  
(Parcel 1):  
Early March to Mid-June  
2020**

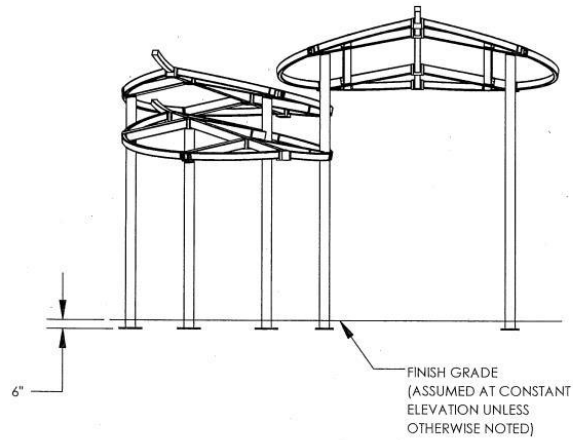
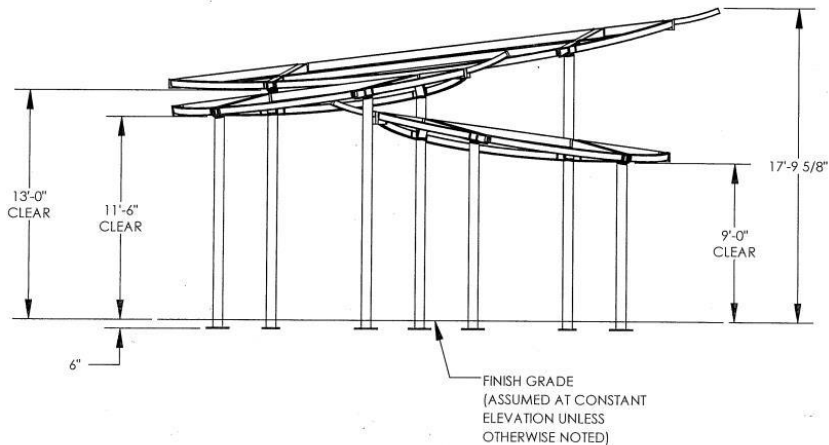
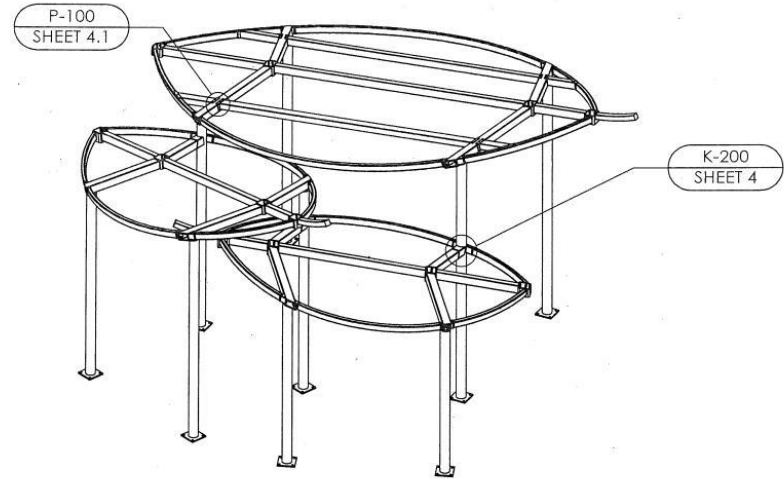
**Construction Phase 2  
(Parcels 2, 3, 4, 5, 6):  
Starting Fall 2020**

# PAVILION LIGHTING + ELECTRICAL

LED strip light provide holes along the perimeter of all three leaves



[https://cdn.shopify.com/s/files/1/0184/0810/files/Lumilum\\_HLO\\_120V\\_Strip\\_CUTSHEET.pdf?98](https://cdn.shopify.com/s/files/1/0184/0810/files/Lumilum_HLO_120V_Strip_CUTSHEET.pdf?98)



PROJECT:	EMMP TRI LEAF STRUCTURES	CREATION DATE:	1/28/2017	DRAWN BY:		PRINT DATE:	1/21/2020
PROJECT LOCATION:	WASHINGTON, DC	BUILDING NO.:	P10585	REV LEVEL:	A	SCALE:	1:84
DRAWING:	STRUCTURAL FRAMING PLAN	CAD MODEL:	-P10585				

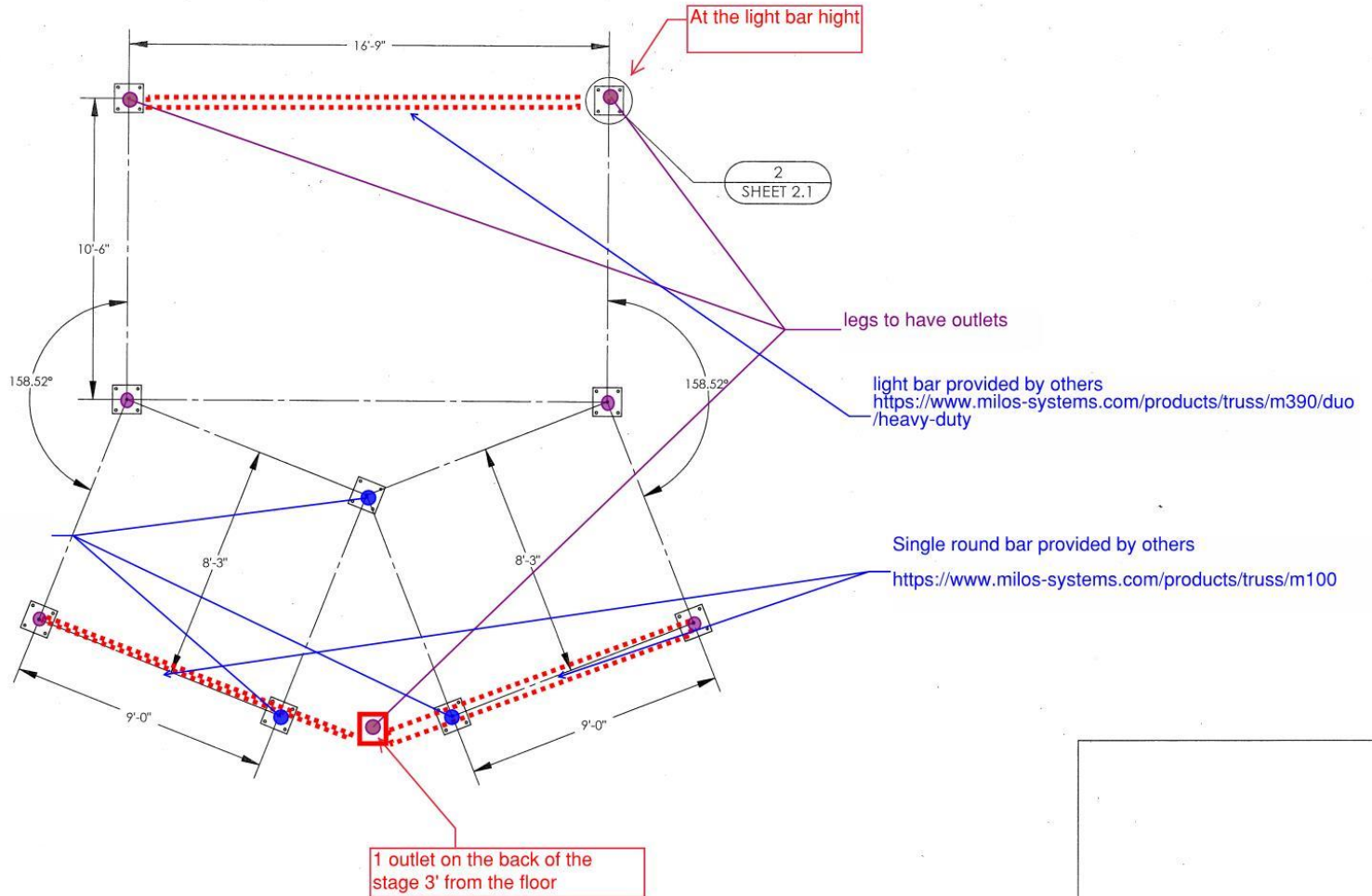
 (616)399-1963  
 www.poligon.com  
 COPYRIGHT 2014 BY PORTER  
 PORTER CORP. 4285 N. 15th AVE. HOLLAND, MI 48424

SHEET

3

IF THESE DRAWINGS ARE SEALED, THE SEAL APPLIES ONLY TO BUILDING COMPONENTS (AND FOUNDATION DESIGN IF APPLICABLE) DETAILED WITHIN THESE DRAWINGS.

# PAVILION LIGHTING + ELECTRICAL



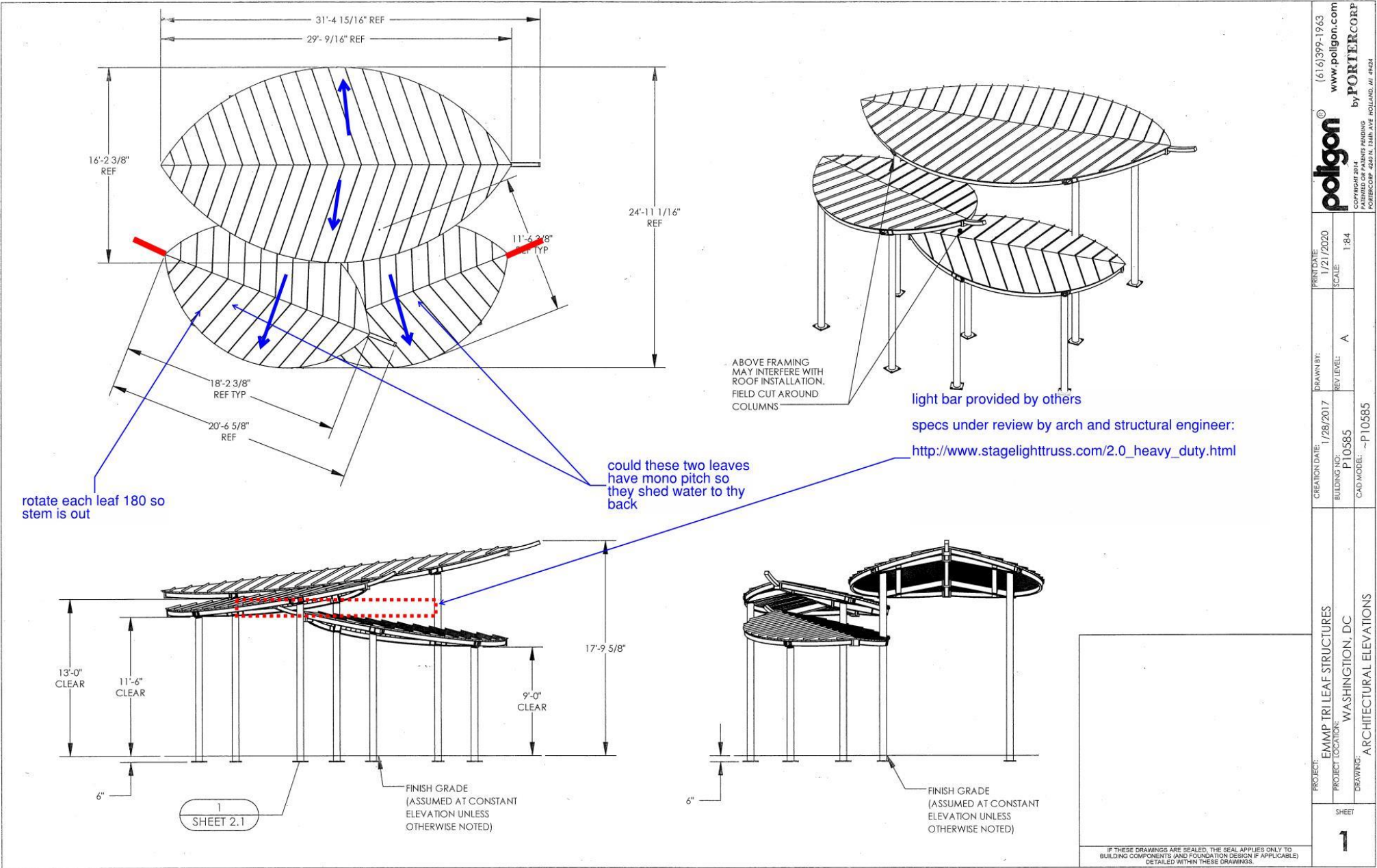
### ANCHOR AND FOOTING LAYOUT NOTES:

1. ANCHORS MUST BE CENTERED IN FOOTINGS
2. FOOTINGS MUST BE TURNED TO ALIGN WITH COLUMN AND TRUSS CENTERLINE.

PROJECT:	EMAMP TRI LEAF STRUCTURES	CREATION DATE:	1/28/2017	PRINT DATE:	1/21/2020	poligon®	(616)399-1963
PROJECT LOCATION:	WASHINGTON, DC	BUILDING NO:	P10585	DRAWN BY:	A	www.poligon.com	www.poligon.com
DRAWING:	ANCHOR AND FOOTING LAYOUT	CAD MODEL:	-P10585	REV LEVEL:	A	by PORTER CORP	PORTER CORP 400 N. DEW AVE. HOLLAND, MI 49424
SHEET				SCALE:	1:48		

IF THESE DRAWINGS ARE SEALED, THE SEAL APPLIES ONLY TO BUILDING COMPONENTS (AND FOUNDATION DESIGN IF APPLICABLE) DETAILED WITHIN THESE DRAWINGS.

# PAVILION LIGHTING + ELECTRICAL



PROJECT:	EMMP TRI LEAF STRUCTURES	PRINT DATE:	1/21/2020
PROJECT LOCATION:	WASHINGTON, DC	DRAWN BY:	www.poligon.com
DRAWING:	ARCHITECTURAL ELEVATIONS	REV. LEVEL:	A
		SCALE:	1:84
		CREATION DATE:	1/28/2017
		BUILDING NO.:	P10585
		CAD MODEL:	-P10585
		PHONE:	(616) 399-1963
		WEBSITE:	www.poligon.com
		DESIGNED BY:	by PORTER CORP
		ADDRESS:	PORTER CORP. 4200 N. 13TH AVE. ROLLAND, MI 48223
			IF THESE DRAWINGS ARE SEALED, THE SEAL APPLIES ONLY TO BUILDING COMPONENTS (AND FOUNDATION DESIGN IF APPLICABLE) DETAILED WITHIN THESE DRAWINGS.
			SHEET 1

# PAVILION LIGHTING + ELECTRICAL

Connecting the world

## M100

- Stylish modular Pipe & Drape solution
- Single tube, quick connection construction
- Versatile 'node-cube' with pre-set location positions
- Stand-alone or integrated within truss structures
- Connection kit supplied with every welded tube
- Compatible with 200/400/500/600 series cell clamps
- Compatible with Xtruss accessories
- Powder coat colour finish available on request



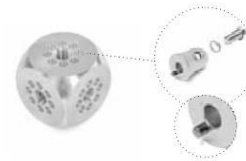
### M100

Main Tubes	mm	in	50 × 2 (2 × 0.08)
Alloy	EN - AW 6082 T6		

### STANDARD LENGTHS AND WEIGHTS AVAILABLE

M100	m	ft	kg (lbs)					
			0.50 (1.04)	1.00 (3.28)	1.50 (4.92)	2.00 (6.56)	2.50 (8.20)	3.00 (9.84)
			0.70 (1.67)	1.10 (2.58)	1.50 (3.48)	1.90 (4.39)	2.40 (5.29)	2.80 (6.20)

Connection material (pins/clips/couplers) and packaging are not included in above weights



### CUBEB-UNI

Series	kg	lbs
M100	0.27 (0.60)	

Universal multiconnection cube that's 360° adjustable



### HINGEQB-UNI

Series	kg	lbs
M100	0.49 (1.08)	

Universal hinge



### CON63B|MalePin

Series	kg	lbs
M100	0.17 (0.37)	

Male fitting for CUBEB-UNI, HINGEQB-UNI, equipped with location pin  
Supplied with washer and M10x25 bolt.  
F & U compatible versions available



### PB|Pin

Series	kg	lbs
M100	0.02 (0.04)	

Pin B with thread M8



### PBM8Set

Series	kg	lbs
M100	0.02 (0.04)	

Supplied with washer and nyloc nut



### SRPB

Series	kg	lbs
M100	0.002 (0.004)	

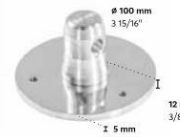
Safety R Clip B



### CCB

Series	kg	lbs
M100	0.11 (0.24)	

M290B conical connector  
F & U compatible versions available



### BBPSC|Male

Series	kg	lbs
M100	0.39 (0.82)	

M100 single base plate with half connector  
F & U compatible versions available



### CL50|CLEAR

Series	kg	lbs
M100	0.003 (0.007)	

Clip 50  
Banner attachment for tube d = 50 mm (2"). Color: Clear  
Not compatible with 48 mm (1.89") tubes

# PAVILION LIGHTING + ELECTRICAL



## STANDARD LENGTHS AND WEIGHTS AVAILABLE

	m (ft)	0.50 (1.64)	1.00 (3.28)	1.50 (4.92)	2.00 (6.56)	2.50 (8.20)	3.00 (9.84)	4.00 (13.12)	5.00 (16.41)
<b>DUO</b>	kg (lbs)	2.00 (4.41)	3.30 (7.28)	4.50 (10.01)	6.00 (13.23)	7.20 (16.03)	8.60 (19.05)	11.30 (25.07)	14.10 (31.11)
<b>TRIO</b>	kg (lbs)	3.10 (6.88)	5.60 (12.35)	7.90 (17.44)	10.50 (23.15)	12.60 (27.93)	15.30 (33.73)	20.50 (45.20)	25.00 (55.12)
<b>QUATRO</b>	kg (lbs)	3.50 (7.83)	7.60 (16.76)	10.80 (23.81)	14.00 (30.87)	17.10 (37.7)	20.30 (44.75)	26.60 (58.2)	33.00 (72.75)

Connection material (pins/clips/couplers) and packaging are not included in above weights

### M390L DUO

LOADING CHART

Span	m (ft)	3.00 (9.84)	4.00 (13.12)	5.00 (16.40)	6.00 (19.69)	7.00 (22.97)	8.00 (26.25)	9.00 (29.53)
<b>Point load</b>	kg (lbs)	1249.30 (2754.23)	1154.60 (2545.45)	921.10 (2030.68)	765.00 (1686.53)	653.00 (1439.62)	568.80 (1253.99)	502.90 (1108.70)
<b>Deflection</b>	mm (in)	4.00 (0.16)	8.80 (0.35)	13.70 (0.54)	19.80 (0.78)	27.00 (1.06)	35.30 (1.39)	44.80 (1.76)
<b>Two point load</b>	kg (lbs)	624.60 (1377.01)	623.20 (1373.92)	621.80 (1370.83)	573.70 (1264.79)	489.80 (1079.82)	426.60 (940.49)	377.20 (831.58)
<b>Deflection</b>	mm (in)	3.60 (0.13)	8.10 (0.32)	15.80 (0.62)	25.20 (0.99)	36.40 (1.35)	44.90 (1.77)	56.80 (2.24)
<b>Three point load</b>	kg (lbs)	416.40 (918.00)	415.50 (916.02)	414.50 (913.81)	382.50 (843.27)	326.50 (719.81)	284.40 (626.99)	251.40 (554.24)
<b>Deflection</b>	mm (in)	3.20 (0.13)	7.50 (0.30)	14.70 (0.58)	23.50 (0.93)	32.00 (1.26)	41.80 (1.65)	52.90 (2.08)
<b>Four point load</b>	kg (lbs)	312.30 (688.50)	311.60 (686.96)	310.90 (685.42)	291.20 (643.87)	272.10 (599.88)	237.00 (522.49)	209.50 (461.87)
<b>Deflection</b>	mm (in)	3.00 (0.12)	7.20 (0.28)	14.00 (0.55)	24.20 (0.95)	33.90 (1.33)	44.30 (1.74)	56.10 (2.21)
<b>Distrib. loading</b>	kg (lbs)	416.40 (918.00)	311.60 (686.96)	248.70 (548.7)	204.80 (452.9)	176.80 (389.9)	142.20 (313.6)	111.70 (246.5)
<b>Deflection</b>	mm (in)	2.50 (0.10)	5.90 (0.23)	11.60 (0.46)	20.10 (0.79)	31.90 (1.26)	43.90 (1.73)	55.60 (2.19)

DUO figures are based on use in vertical mode and stabilized every 1m

### M390L TRIO

LOADING CHART

Span	m (ft)	6.00 (19.69)	8.00 (26.25)	10.00 (32.81)	12.00 (39.37)	14.00 (45.93)	16.00 (52.49)	18.00 (59.06)
<b>Point load</b>	kg (lbs)	654.90 (1443.81)	482.50 (1063.73)	377.10 (831.36)	305.20 (672.85)	252.40 (556.45)	211.50 (466.28)	178.70 (393.97)
<b>Deflection</b>	mm (in)	17.20 (0.68)	30.70 (1.21)	48.40 (1.91)	70.40 (2.77)	97.00 (3.82)	128.40 (5.06)	165.00 (6.50)
<b>Two point load</b>	kg (lbs)	491.20 (1082.91)	361.90 (797.85)	282.80 (623.47)	228.90 (504.64)	189.30 (417.33)	158.60 (349.65)	134.00 (295.42)
<b>Deflection</b>	mm (in)	21.80 (0.86)	38.80 (1.53)	60.70 (2.39)	87.60 (3.45)	119.60 (4.71)	156.70 (6.17)	199.00 (7.83)
<b>Three point load</b>	kg (lbs)	327.50 (722.01)	241.30 (531.97)	188.50 (415.57)	152.60 (336.43)	126.20 (278.22)	105.80 (233.25)	89.30 (196.87)
<b>Deflection</b>	mm (in)	20.30 (0.80)	36.20 (1.43)	56.70 (2.23)	82.00 (3.23)	112.20 (4.42)	147.50 (5.81)	188.00 (7.40)
<b>Four point load</b>	kg (lbs)	272.90 (601.64)	201.00 (443.13)	157.10 (346.35)	127.10 (280.27)	105.20 (231.93)	88.10 (194.23)	74.40 (164.02)
<b>Deflection</b>	mm (in)	21.50 (0.85)	38.30 (1.51)	59.90 (2.36)	86.50 (3.41)	118.10 (4.65)	154.90 (6.10)	196.90 (7.75)
<b>Distrib. loading</b>	kg (lbs)	218.30 (481.69)	120.60 (265.8)	75.40 (166.4)	50.90 (112.1)	36.10 (79.4)	26.40 (58.2)	19.90 (43.8)
<b>Deflection</b>	mm (in)	21.30 (0.84)	38.00 (1.50)	59.50 (2.34)	85.90 (3.38)	117.30 (4.62)	153.90 (6.06)	195.60 (7.70)

TRIO figures are based on use in apex up/down orientation

### M390L QUATRO

LOADING CHART

Span	m (ft)	6.00 (19.69)	8.00 (26.25)	10.00 (32.81)	12.00 (39.37)	14.00 (45.93)	16.00 (52.49)	18.00 (59.06)
<b>Point load</b>	kg (lbs)	1526.90 (3366.23)	1133.50 (2498.94)	894.70 (1972.47)	733.30 (1616.65)	616.10 (1358.27)	526.60 (1160.95)	455.40 (1003.98)
<b>Deflection</b>	mm (in)	19.80 (0.78)	35.40 (1.39)	55.60 (2.19)	80.50 (3.17)	110.30 (4.34)	145.30 (5.72)	185.60 (7.31)
<b>Two point load</b>	kg (lbs)	1054.00 (2323.67)	850.10 (1874.15)	671.00 (1479.30)	550.00 (1212.54)	462.10 (1018.75)	394.90 (870.60)	341.50 (752.88)
<b>Deflection</b>	mm (in)	23.20 (0.91)	44.90 (1.77)	70.20 (2.76)	101.30 (3.99)	138.10 (5.44)	180.70 (7.11)	229.20 (9.02)
<b>Three point load</b>	kg (lbs)	763.50 (1683.23)	566.70 (1249.36)	447.40 (986.35)	364.70 (808.43)	308.10 (679.24)	263.30 (580.48)	227.70 (501.99)
<b>Deflection</b>	mm (in)	23.50 (0.93)	41.80 (1.65)	65.50 (2.58)	94.50 (3.72)	129.10 (5.08)	169.20 (6.66)	215.00 (8.46)
<b>Four point load</b>	kg (lbs)	618.90 (1364.44)	472.30 (1041.24)	372.80 (821.88)	305.60 (673.73)	256.70 (565.93)	219.40 (483.69)	189.70 (418.22)
<b>Deflection</b>	mm (in)	24.20 (0.95)	44.30 (1.74)	69.30 (2.73)	99.90 (3.93)	136.30 (5.37)	178.40 (7.02)	226.40 (8.91)
<b>Distrib. loading</b>	kg (lbs)	412.60 (907.25)	283.40 (624.4)	178.90 (395.4)	122.20 (269.1)	88.00 (192.8)	65.80 (144.2)	50.60 (111.5)
<b>Deflection</b>	mm (in)	20.10 (0.79)	43.90 (1.73)	68.80 (2.71)	99.20 (3.91)	135.30 (5.33)	177.10 (6.97)	224.80 (8.85)



All truss loading calculations and TUV certifications are based on:  
 Truss supported or suspended at both ends • Static loadings only • Loads applied in the node points • Included self weight of the trusses • Spans made of different truss lengths • Interaction of bending moment and shear force at connector • Structural calculations based on DIN EN 1999-1-1 and DIN EN 1999-1-1 A2 made in 2014 • To comply with BS 7905-2 / ANSI E2-2006 / CWA 15902-2 all loading data should be multiplied by 0.85 • For any other application or in case of an assembled structure, contact Milos or a structural engineer • Safety factors used - self weight 1.35 / loading 1.5

Small and Medium trusses

Connecting the world



## M390 Heavy-Duty

- Certified 48mm tube heavy-duty M390 series truss range
- Interior & exterior applications
- Fast connection for quick, simple and secure assembly
- Great free-span & loading characteristics (up to 20m / 65.61 ft)
- Custom lengths, junctions & curves available
- Connection kit supplied with every truss length & junction
- Compatible with 200/400/500/600 series cell clamps
- Powder coat colour finish available on request

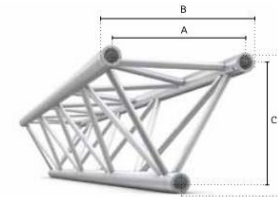
### DUO



### M390L

	Main Chords	Diagonals	Alloy	A	B	Coupler
BTL	48x3 (1.89x0.12)	20x2 (0.78x0.08)	EN - AW 6082 T6	340 (13.39)	388 (15.28)	CCB
BTLF	48x3 (1.89x0.12)	20x2 (0.78x0.08)	EN - AW 6082 T6	340 (13.39)	388 (15.28)	CCF

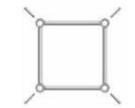
### TRIO



### M390L

	Main Chords	Diagonals	Alloy	A	B	C	D	Coupler
STL	48x3 (1.89x0.12)	20x2 (0.78x0.08)	EN - AW 6082 T6	340 (13.39)	388 (15.28)	294 (11.57)	342 (13.46)	CCB
STLF	48x3 (1.89x0.12)	20x2 (0.78x0.08)	EN - AW 6082 T6	340 (13.39)	388 (15.28)	294 (11.57)	342 (13.46)	CCF

### QUATRO

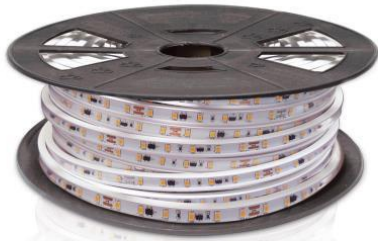


### M390L

	Main Chords	Diagonals	Alloy	A	B	Coupler
QTL	48x3 (1.89x0.12)	20x2 (0.78x0.08)	EN - AW 6082 T6	340 (13.39)	388 (15.28)	CCB
QTLF	48x3 (1.89x0.12)	20x2 (0.78x0.08)	EN - AW 6082 T6	340 (13.39)	388 (15.28)	CCF



# PAVILION LIGHTING + ELECTRICAL



## SINGLE COLOR ULTRA HIGH LUMEN OUTPUT 120V STRIP LIGHT

MODEL: LUM-120HLO-XXXXK

### DIMMABLE

This Ultra High Lumen Output Line Voltage (120V) LED Strip Light requires no power adapters or drivers, instead it uses a rectifier that converts AC into DC Current. The light source in the LED strip consists of 3,300 equally distributed high brightness SMD 5730 chips per 164ft. spool which come in incremental segments of 4 inches. The light output is bright and crisp. This Single Color LED Strip Light is dimmable, using conventional dimmers. The entire 164ft. of this high voltage strip can be used without the risk of voltage drop. This product is rated for indoor and outdoor uses. This strip can be installed using four alternative methods: (See Installation Diagram page for details).

Color Options	Model #	UPC
• Warm White	LUM-120HLO-3000K	857536007146
• Cool White	LUM-120HLO-5500K	857536007153



## PRODUCT FEATURES

- 164 ft. spool (50 meters)
- Input: 120 Volts AC. No Adapter or Driver required, 164 ft. works with a rectifier included in the power plug
- High Lumen Output
- 4 inch increments (marked)
- (Color Rendering Index) CRI > 80
- 4.0 Watts/ft
- 50,000 + Hours Rated Life
- Outdoor / Indoor rated
- Flexible, high transmittance UV protective cover
- 20 LED diodes per ft
- Beam angle 120°
- Ambient operating temperature: -13°F ~ 113°F
- LED spacing: 0.5"
- Width: 0.59"
- Height: 0.31

## IDEAL USES

- Any place where a long distance of LED Strip light is required
- Cove and other indirect lighting
- Landscape lighting
- Under cabinets
- Stairways
- Building exteriors
- Bars / liquor displays
- Backlit signs
- Under tables / furniture
- Window trims
- Fences
- Decks
- Columns
- Building Exteriors
- Bridges



## PERFORMANCE

Color	Model	Color Temp.	CRI	Lumen /Ft.	Viewing Angle	Voltage	Current /Ft.	Power Consumption /Ft.
Warm White	LUM-120HLO-3000K	3,000°K	80	675	120°	120V	0.03A	4.00W
Cool White	LUM-120HLO-5500K	5500°K	80	690	120°	120V	0.03A	4.00W

## COLOR OPTIONS / SINGLE COLOR / 120V



Warm White  
(3,000°K)  
LUM-120HLO-3000K



Cool White  
(5,500°K)  
LUM-120HLO-5500K

## ACCESSORIES / 120V



Power Plug with Fuse  
LUM-120HLO-PP  
(Measures 4FT.)



End Cap  
LUM-120HLO-EC  
(Sold separately)



U Channel / 4 Ft.  
LUM-120HLO-4FT



Intermediate Connector  
LUM-120HLO-IC  
(Sold separately)



Mounting Clip  
LUM-120HLO-CL  
(Pack of 10)

## PACKAGING

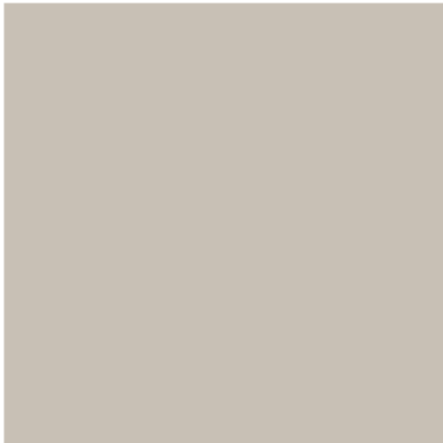
SHIPPING DIMENSIONS & WEIGHT  
13"(L) x 13" W) x 6.5" (H), 20 lbs.



# PAVILION + SHADE STRUCTURE COLORS

---

## Pavilion



Roof  
**Ash Gray**



Frame  
**Greystone**

## Shade Structure

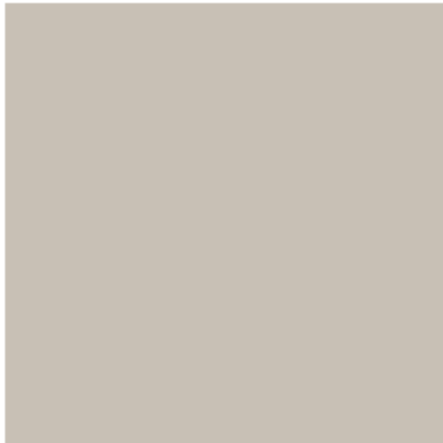


Roof  
**Hartford Green**



Frame  
**Canvas Taupe**

# PAVILION COLORS



Roof  
**Ash Gray**



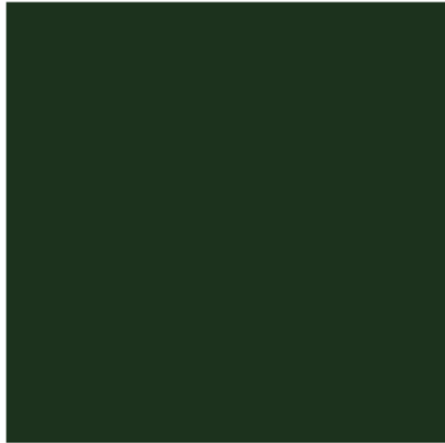
Frame  
**Greystone**



# PAVILION COLORS



# SHADE STRUCTURE COLORS



Roof  
**Hartford  
Green**



Frame  
**Canvas  
Taupe**



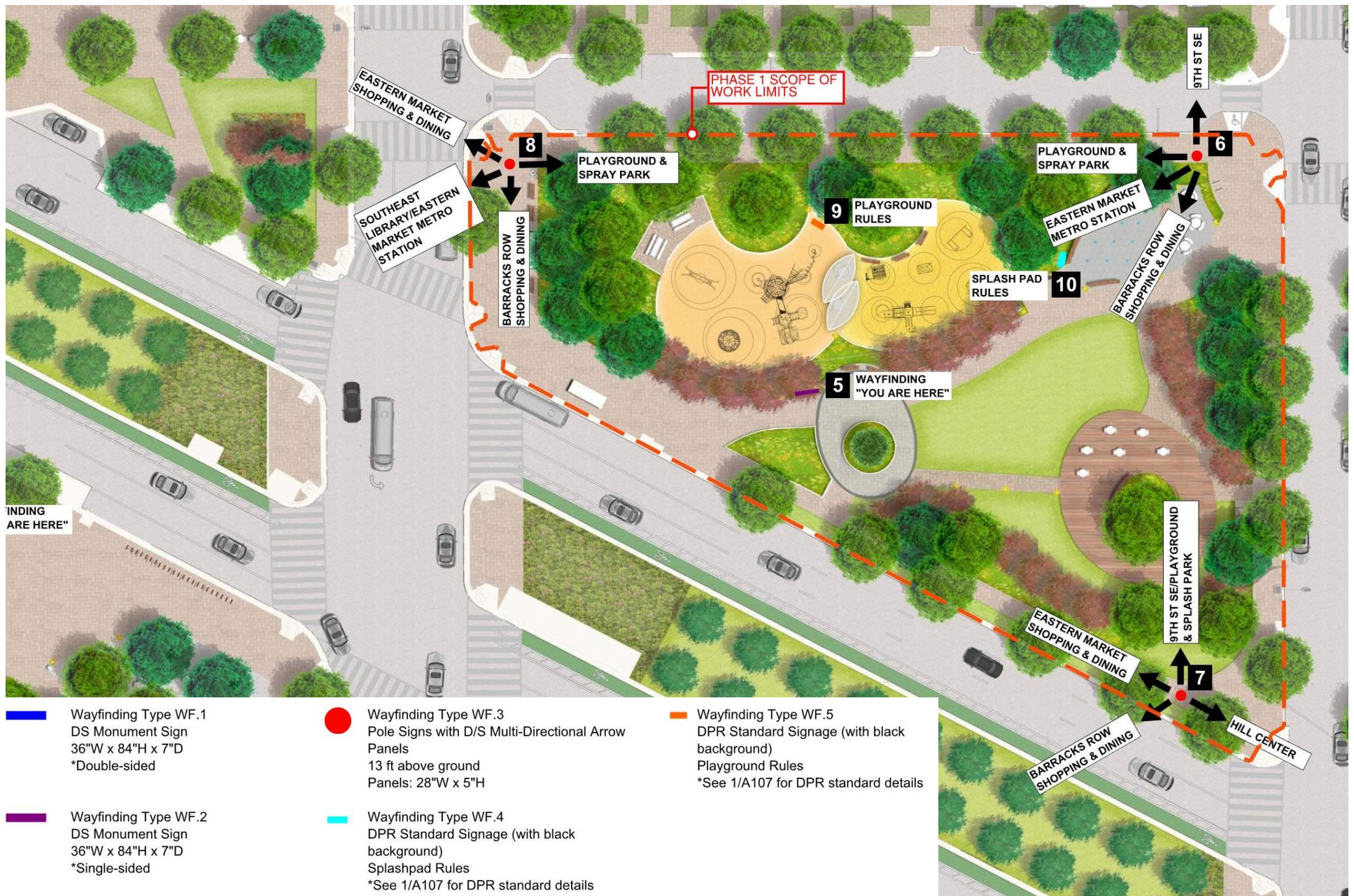
# SHADE STRUCTURE COLORS



# SHADE STRUCTURE COLORS

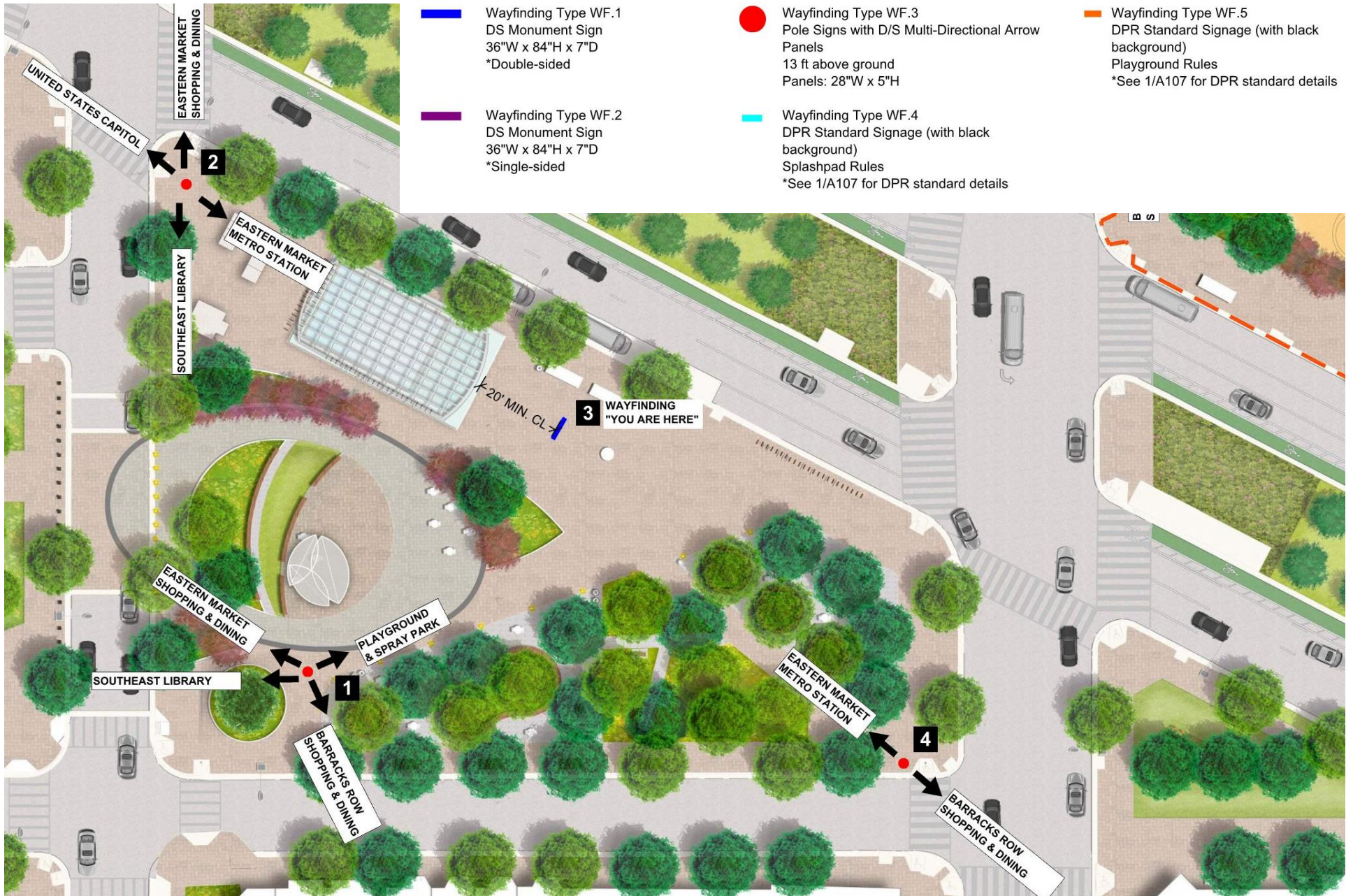


# WAYFINDING REFINEMENT PARCEL 1





# WAYFINDING REFINEMENT PARCEL 4



# PHASE ONE CONSTRUCTION SCHEDULE SUMMARY

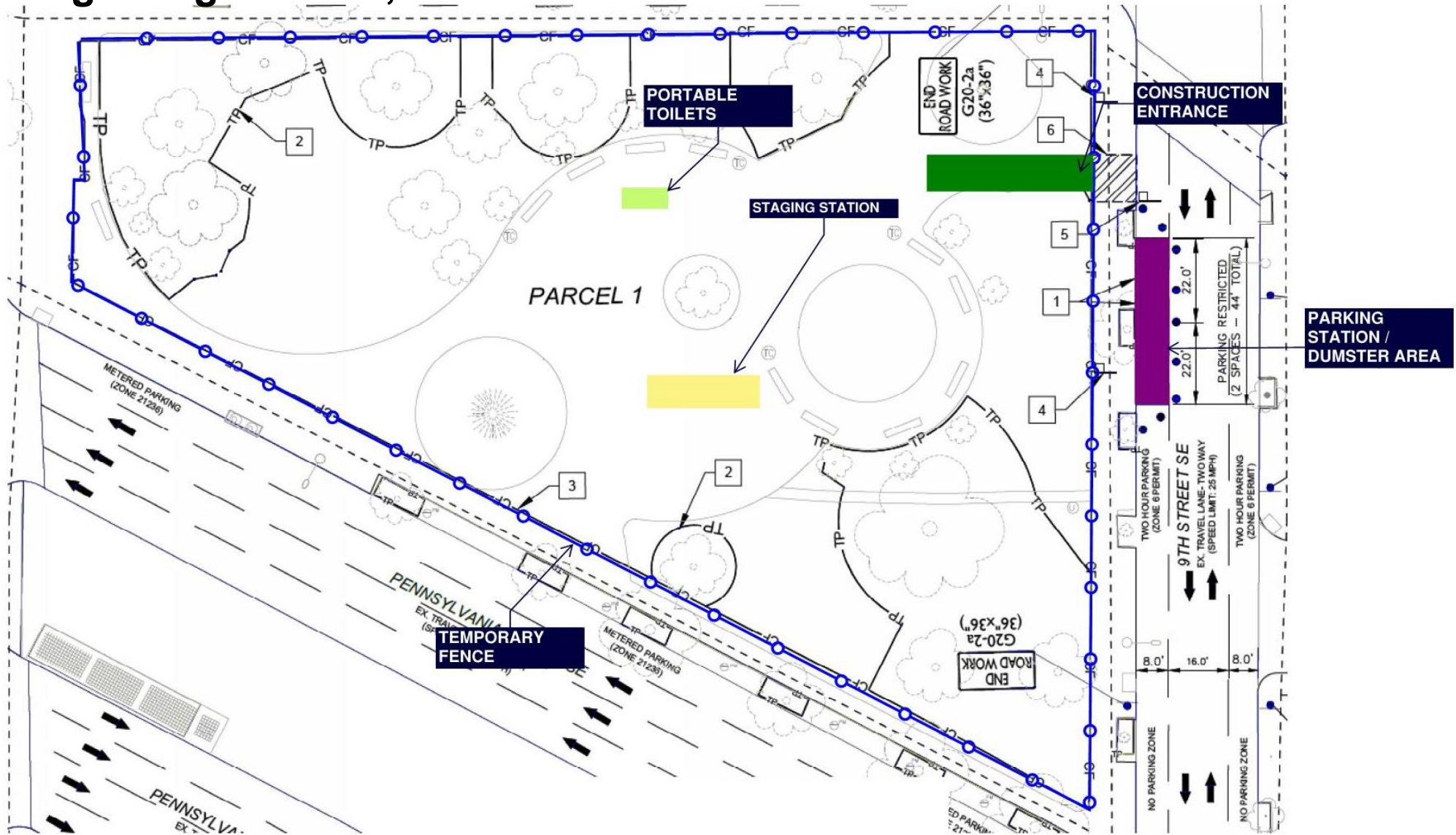
---

## Key Milestones

- Mobilization/Demolition: March 2, 2020
- Groundbreaking: Early March 2020
- Begin Construction: Mid-March 2020
- Complete Construction: June 2020

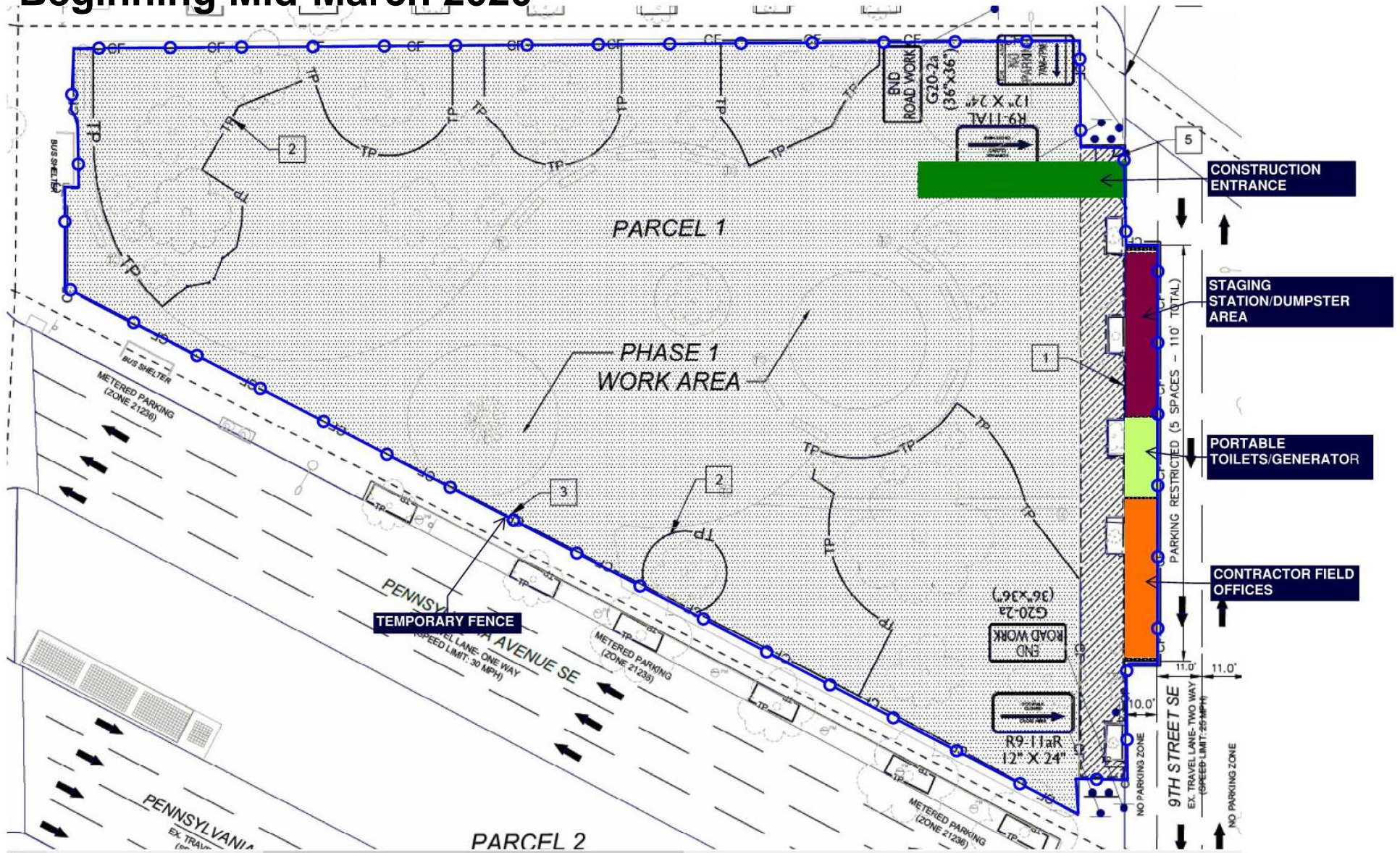
# PHASE ONE CONSTRUCTION DEMOLITION PLAN

Beginning March 2, 2020

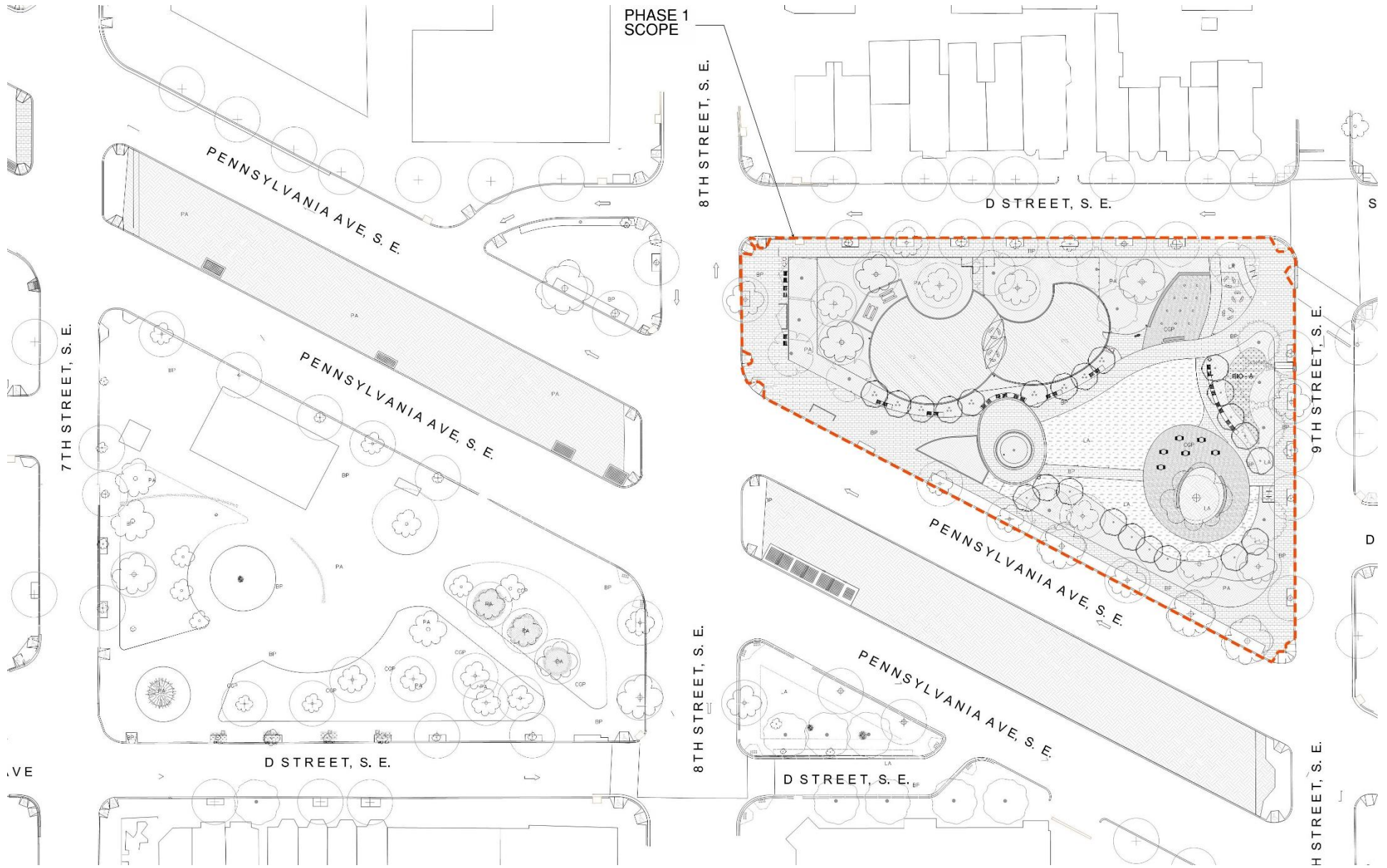


# PHASE ONE CONSTRUCTION LOGISTICS PLAN

## Beginning Mid-March 2020



# REVISED PHASE 1 LIMITS BULB-OUT IMPLEMENTATION



# SITE VISIT BENCH SELECTION FOR REUSE



# THANKS!

## EASTERN MARKET METRO PARK

February 26, 2019

