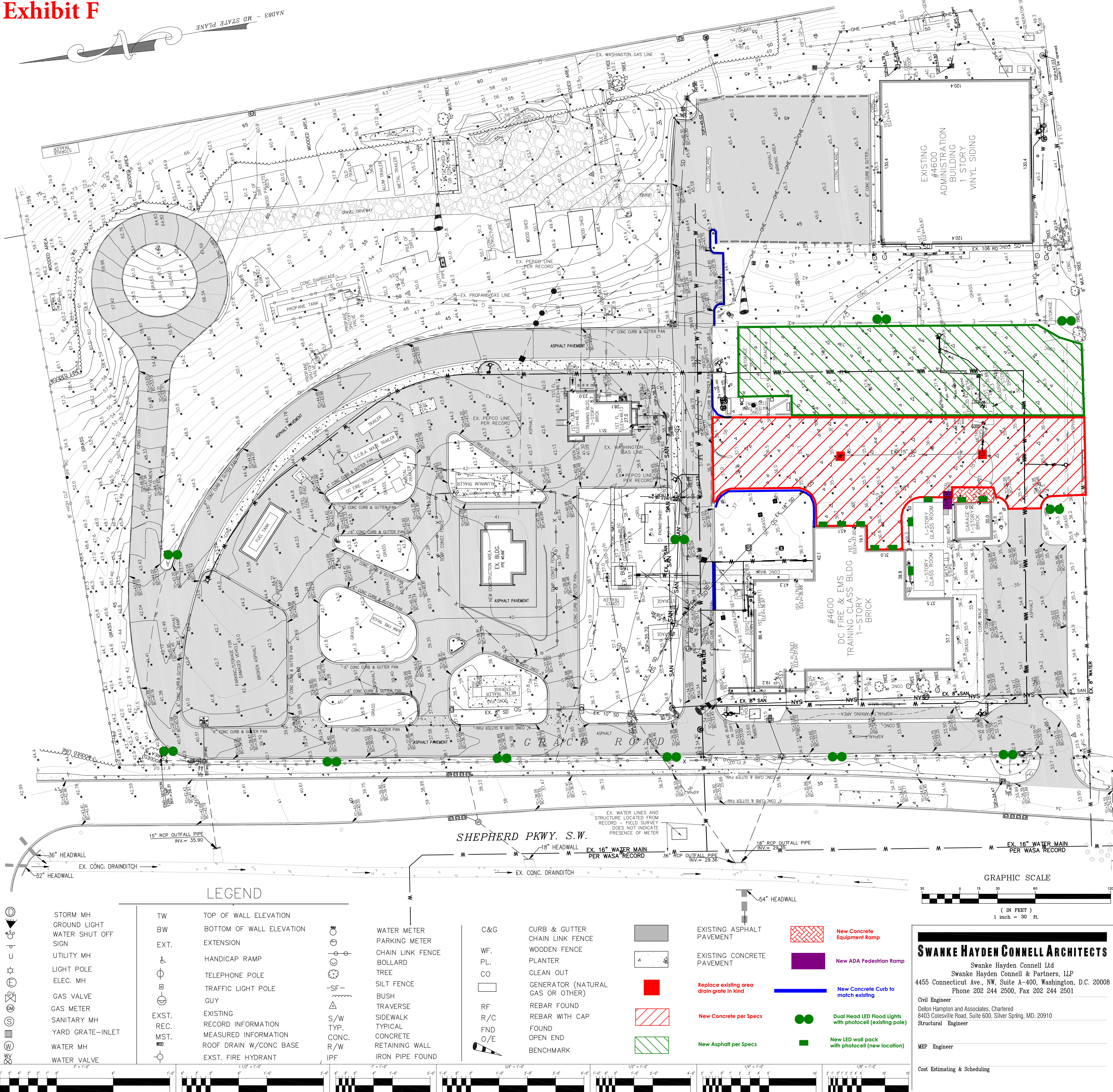


Exhibit F



GENERAL NOTES:

- HORIZONTAL DATUM: NAD 83 - 1900 MD. STATE PLANE
- VERTICAL DATUM: DC DPW&T TIED INTO THE FOLLOWING BENCH MARKS:  
  
BM #15-8: S.W. CORNER DOOR SILL SOUTH MOST ENTRANCE WEST SIDE OF D.C.F.D.T.C. VICINITY OF OVERLOOK AVENUE & I-295 (NAVAL RESEARCH LAB). (HELD)  
  
BM #15-9: S.E. CORNER OUTER EDGE CONC "PLATFORM" NORTH ENTRANCE TO COTTAGE #5A VICINITY OF NAVAL RESEARCH LAB., D.C.F.D.T.C. & POLICE ACADEMY.
- PROPERTY ZONED: " FED " & " C-M-1 " ZONING INFORMATION SHOWN IS SUBJECT TO INTERPRETATION BY A QUALIFIED ZONING ATTORNEY OR PERSONNEL PRACTICING IN THE DISTRICT OF COLUMBIA. AULTEC, INC., OFFERS NO OPINION TO ZONING RELATED ISSUES AFFECTING THE SUBJECT PROPERTY. TO CERTIFY TO ZONING COMPLIANCE PLEASE CONTACT THE OFFICE OF ZONING AT 411 4TH STREET, N.W., SUITE 200 SOUTH, WASHINGTON, DC 20001 (TEL. 202-727-6311).
- PROPERTY SHOWN HEREON LIES WITHIN FLOOD ZONE "C" - AREAS OF MINIMAL FLOODING AS ESTABLISHED BY THE U.S. FEDERAL EMERGENCY MANAGEMENT AGENCY, NATIONAL FLOOD INSURANCE PROGRAM, FLOOD INSURANCE RATE MAP, COMMUNITY PANEL NO. 110001 0025 B, MAP EFFECTIVE DATE: NOVEMBER 15,1985.
- THIS SURVEY WAS PREPARED WITHOUT THE BENEFIT OF A TITLE REPORT AND MAY NOT REFLECT EASEMENTS, PROPERTY LINES AND OTHER RESTRICTIONS OF RECORD.
- UNDERGROUND UTILITIES SHOWN HEREON, IF ANY, WERE LOCATED FROM AVAILABLE RECORDS AND SURFACE INDICATIONS. SUBSURFACE INVESTIGATIONS WERE NOT PERFORMED. ALL UNDERGROUND UTILITY LOCATIONS SHOULD BE CONSIDERED APPROXIMATE. FOR MARKING OF UNDERGROUND UTILITY LINES, CALL MISS UTILITY AT 1-800- 257-7777 AT LEAST 48 HOURS PRIOR TO ANY EXCAVATION OR CONSTRUCTION.

UTILITY LEGEND:

— PRL —	— E —	ELECTRIC LINE (PAINTED RED LINE)
— PBL —	— W —	WATER LINE (PAINTED BLUE LINE)
— PYL —	— G —	GAS LINE (PAINTED YELLOW LINE)
— POL —	— T —	COMMUNICATION LINE (PAINTED ORANGE LINE)
— PGL —	— S —	SANITARY LINE / STORM (PAINTED GREEN LINE)
— OHE —	—	OVERHEAD ELEC. LINE

BENCH MARK INFORMATION

No.	ELEVATION	DESCRIPTION
BM# 15-8	37.03	S.W. corner Door Sill South most Entrance West Side of D.C.F.D.T.C. Vicinity of Overlook Avenue & I-295 (Naval Research Lab). (HELD)
BM# 15-9	27.80	S.E. corner Outer Edge Conc "Platform" North Entrance to Cottage #5A Vicinity of Naval Research Lab., D.C.F.D.T.C. & Police Academy.
BM#1	46.11	BM set spike in power pole as shown in drawing
BM#2	38.26	BM set on northwest corner on brick ret. wall as shown in drawing
BM#3	54.03	BM set square cut on northwest corner of concrete garage pad as shown in drawing

TRAVERSE INFORMATION

NO.	NORTHING	EASTING	ELEVATION (DC DPW&T)	DESCRIPTION
101	420788.3146	1307783.4971	41.82	Rebar with Cap
102	420468.4500	1307734.8350	36.20	Rebar with Cap
103	420056.8857	1307647.9825	33.74	Rebar with Cap
104	420112.6936	1308025.8802	42.56	Rebar with Cap
105	420356.7736	1308153.6259	50.59	Rebar with Cap
106	420706.5634	1308155.4910	65.03	Rebar with Cap

GPS CONTROL STATIONS

NAD83 MARYLAND STATE PLANE COORDINATE - SPC 1900 MD

NO.	NORTHING	EASTING	COMBINED FACTOR	DESCRIPTION
102	420468.4500	1307734.8350	0.999952187	GPS POINT-REBAR AND CAP
106	420706.5634	1308155.4910	0.999953573	GPS POINT-REBAR AND CAP

EXISTING CONDITIONS NOTES

- TOPOGRAPHIC INFORMATION SHOWN IS BASED ON A SURVEY PERFORMED SPECIFICALLY FOR FEMS - EVOC PROJECT BY AULTEC, INC. DATED 08/26/09, UTILITY RECORD DRAWINGS FROM VARIOUS UTILITY COMPANIES, AND FIELD OBSERVATIONS CONDUCTED BY DHA. UNDERGROUND UTILITY LINES WERE DESIGNATED BY INSIGHT, LLC. THE INFORMATION CONTAINED IN THIS DRAWING SHOULD BE CONSIDERED APPROXIMATE. FIELD VERIFICATION MUST BE CONDUCTED PRIOR TO ANY EXCAVATION OR CONSTRUCTION.
- THE UTILITY INFORMATION SHOWN IS NOT NECESSARILY COMPLETE AND THE GENERAL LOCATIONS SHOWN ARE TO BE CONSIDERED APPROXIMATE. IT SHALL BE THE RESPONSIBILITY OF THE CONTRACTOR TO VERIFY THE LOCATION AND DEPTH OF ALL UTILITIES WELL IN ADVANCE OF CONDUCTING ANY OPERATIONS WHICH COULD DAMAGE OR INTERRUPT THESE FACILITIES IN AREAS WHERE THE PROPOSED CONSTRUCTION MAY CONFLICT WITH EXISTING UTILITIES.
- THE CONTRACTOR SHALL TAKE NECESSARY PRECAUTIONS TO AVOID DAMAGE TO EXISTING UTILITIES. IF AN UNDERGROUND UTILITY IS DAMAGED, THE CONTRACTOR SHALL IMMEDIATELY NOTIFY THE OWNER'S CONSTRUCTION MANAGER. ANY DAMAGE SUSTAINED TO UTILITIES ABOVE AND BELOW GROUND SHALL BE REPAIRED BY CONTRACTOR AT HIS OWN EXPENSE TO THE SATISFACTION OF THE OWNER'S CONSTRUCTION MANAGER.
- FOR LOCATION OF UTILITIES IN PUBLIC SPACE, CALL MISS UTILITY AT 1-800-257-7777, 48 HOURS IN ADVANCE OF ANY EXCAVATION OR DEMOLITION WORK. EXISTING UTILITIES ON PRIVATE PROPERTY SHALL BE LOCATED BY A PRIVATE UTILITY LOCATOR AT THE CONTRACTOR'S EXPENSE.
- IT SHALL BE THE DUTY OF THE CONTRACTOR TO VERIFY ALL DIMENSIONS AND CONDITIONS GIVEN ON THE DRAWINGS AND REPORT TO THE OWNER'S CONSTRUCTION MANAGER ANY ERROR OR INCONSISTENCY WITH THE ACTUAL CIRCUMSTANCES IN THE FIELD PRIOR TO COMMENCING WORK.

SWANKE HAYDEN CONNELL ARCHITECTS

Swanke Hayden Connell Ltd  
Swanke Hayden Connell & Partners, LLP  
4455 Connecticut Ave., NW, Suite A-400, Washington, D.C. 20008  
Phone 202 244 2500, Fax 202 244 2501

Civil Engineer  
Delon Hampton and Associates, Chartered  
8403 Colesville Road, Suite 600, Silver Spring, MD. 20910  
Structural Engineer

MEP Engineer

Cost Estimating & Scheduling

Designed: LJ  
Drawn: JD  
Checked: BW  
CERTIFICATION

Registration No.:

Date:

Architect:

Date:

Revision	Date	Description	By	App.
----------	------	-------------	----	------

EXISTING SITE CONDITIONS PLAN

DC Fire & EMS Training Academy - EVOC Infrastructure Renovation  
4600 Shepherd Parkway, S.W., Washington, D.C.

GOVERNMENT OF THE DISTRICT OF COLUMBIA  
FIRE & EMERGENCY MEDICAL SERVICES DEPARTMENT  
3180 V ST., N.E., WASHINGTON, D.C. 20018

Drawing No.:  
**C-1.00**

Building ID No.: -  
Project No.: 1D8-37  
Date: December 22, 2010  
Sheet 1 of 34