

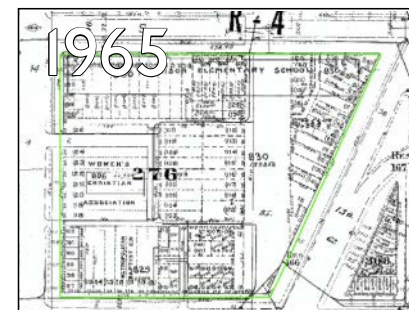
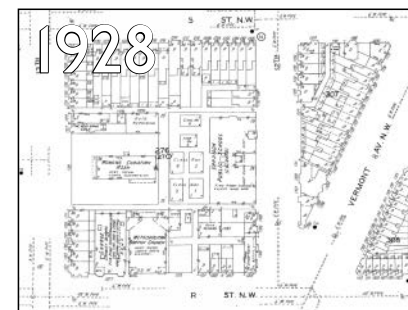
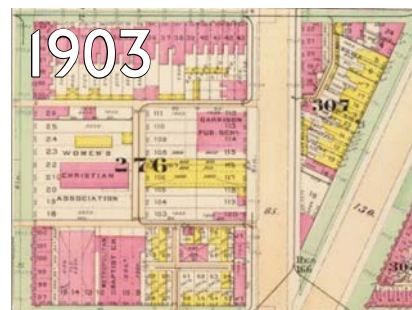
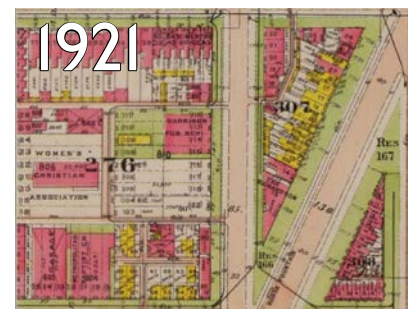
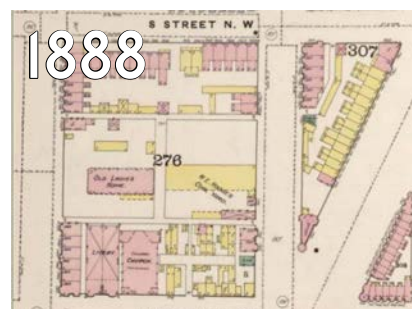
**Garrison Elementary School Phase 1 Modernization**  
Concept Design Presentation LCCA Meeting, February 12 2014

**BELL** / **NEWMAN**  
architects ARCHITECTS  
JOINT VENTURE



# Garrison History

## Neighborhood School Since 1889



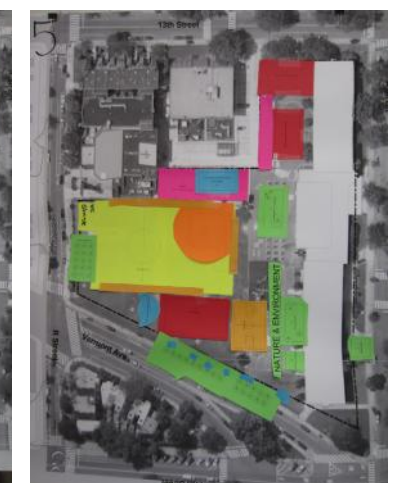
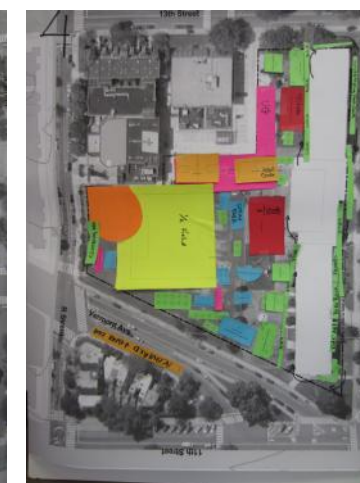


# Site Concept Community Visioning

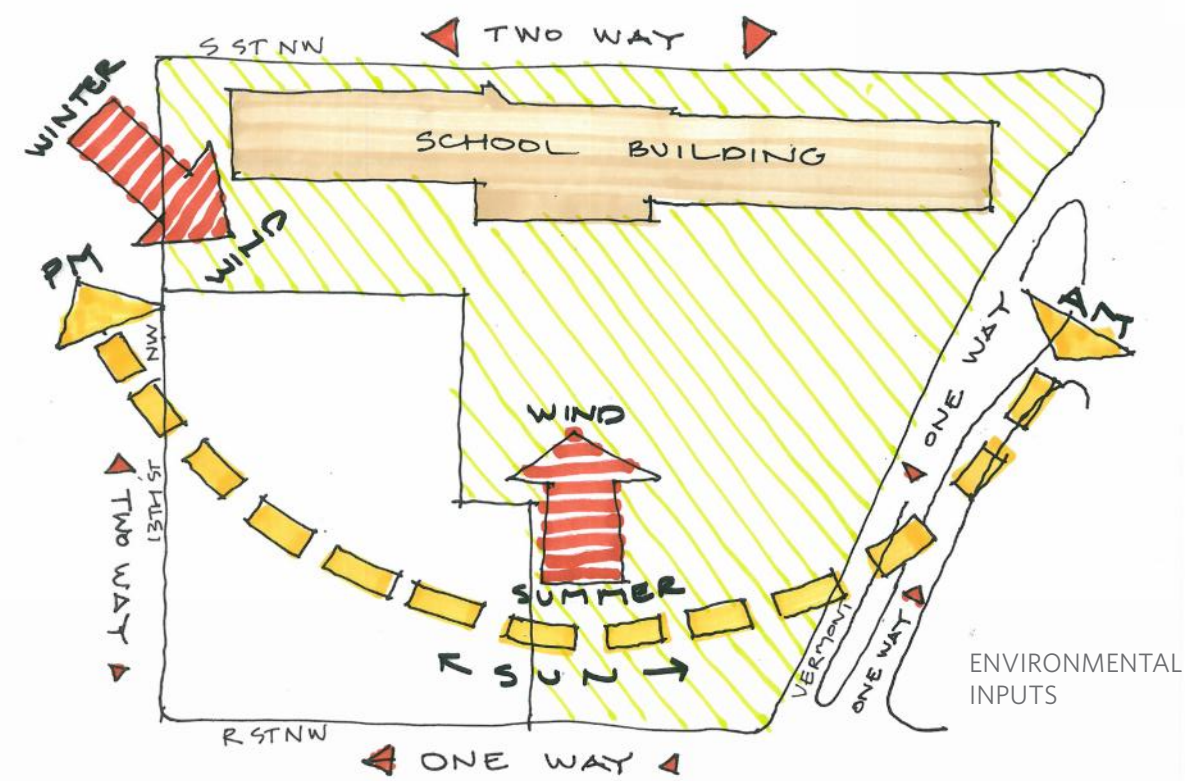
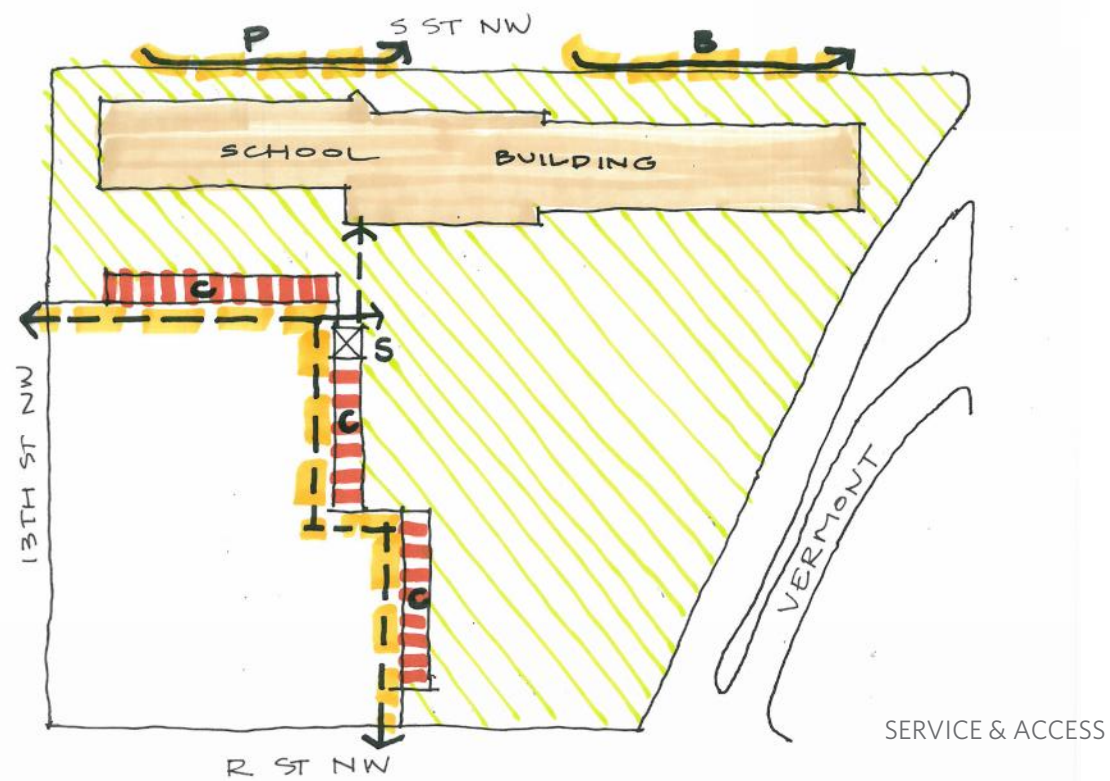
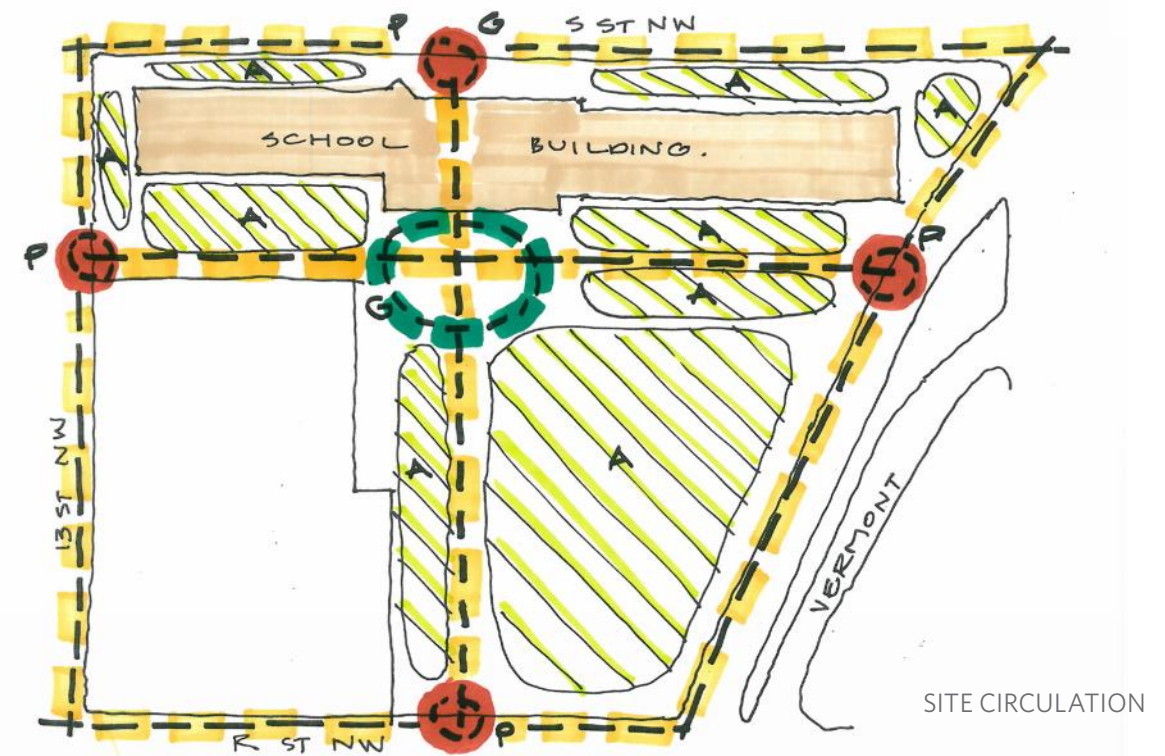
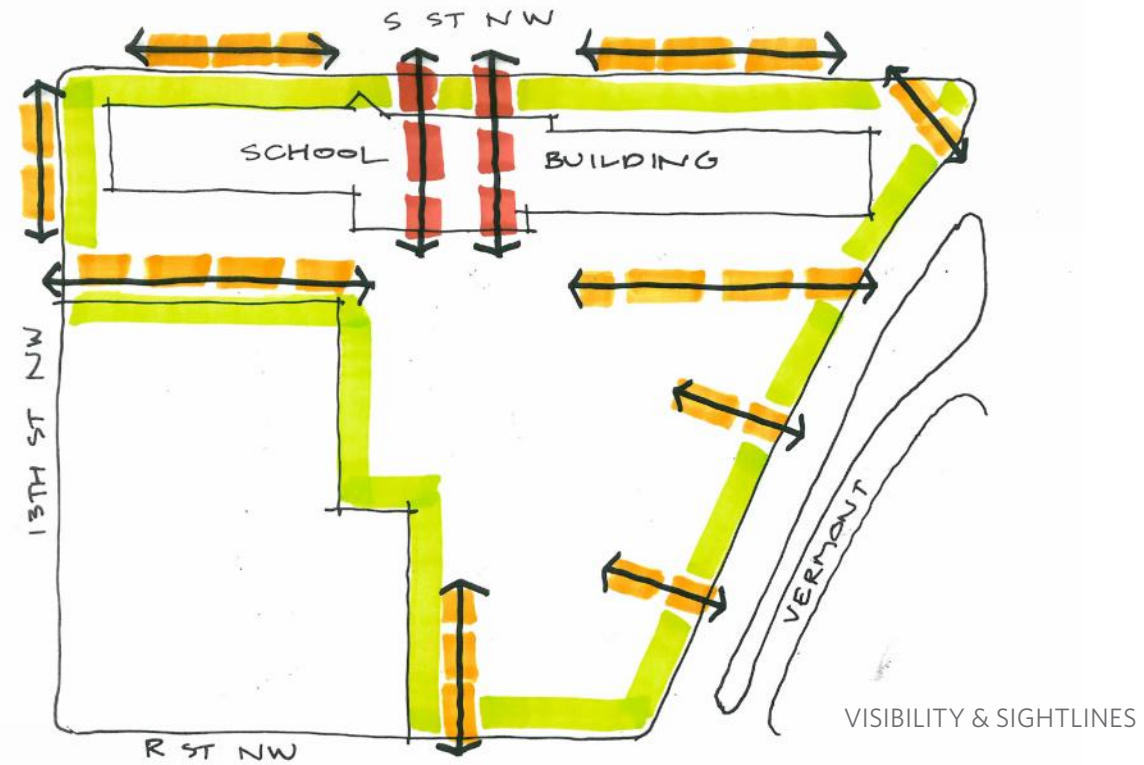
2012 Participatory Process

Engagement with 100+ community members

- Relationship with nature is a key to learning
- Garrison's schoolyard = neighborhood park
- The school can become a community resource







## Planning Principles





OASIS / OUTDOOR CLASSROOM



STODDERT SCHOOL  
PERFORMANCE SPACE



NEIGHBORHOOD PARKS

## Precedents

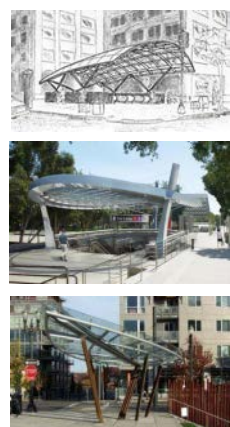




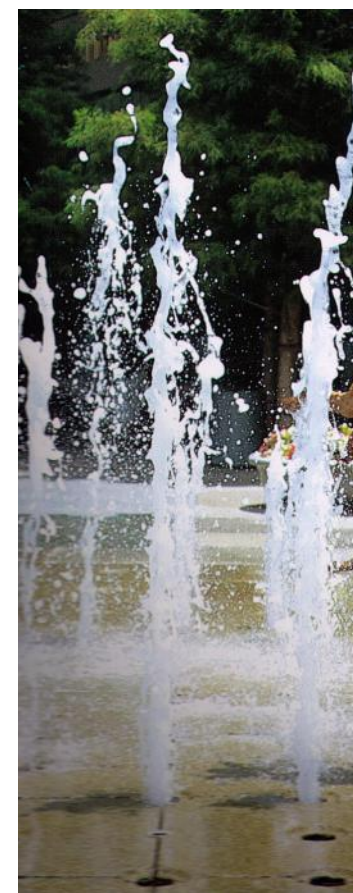
STODDERT SCHOOL  
ENVIRONMENTAL CLASSROOM



PLAYGROUNDS



PORTALS



SPRINKLER PLAZA



# Site Concept



SPORTS

- ① MULTI-PURPOSE FIELD
- ② RUNNING TRACK
- ③ BASKETBALL COURT
- ④ EARLY CHILDHOOD MINI-FIELD

PLAY

- ⑤ PLAYGROUND
- ⑥ SPRINKLER PLAZA
- ⑦ EARLY CHILDHOOD PLAYGROUND

GATHERING & ART

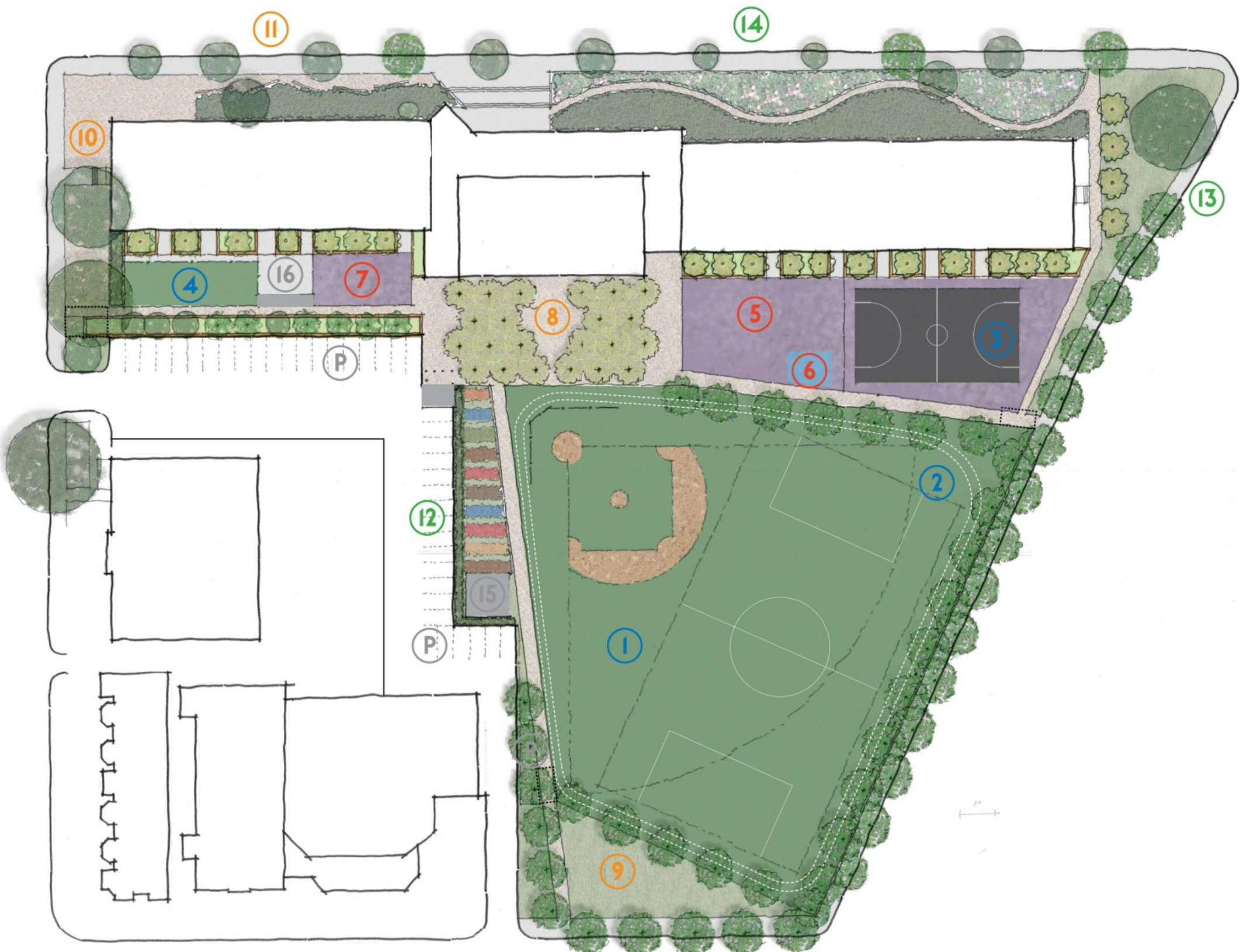
- ⑧ OASIS / OUTDOOR CLASSROOM
- ⑨ PERFORMANCE SPACE
- ⑩ COMMUNITY SQUARE
- ⑪ GALLERY & GARRISON SIGN

NATURE & ENVIRONMENT

- ⑫ GARDENS / ENVIRONMENTAL CLASSROOM
- ⑬ URBAN ORCHARD
- ⑭ NATURE TRAIL

UTILITY

- ⑮ TOILETS & EQUIPMENT STORAGE
- ⑯ TRICYCLE STORAGE
- P PARKING - 40 SPACES PROVIDED











OASIS, PLAY AREAS AND GARDENS





OASIS / OUTDOOR CLASSROOM AND PLAY AREA BEYOND





13TH STREET VIEW - ENTRY PAVILION





VERMONT AVENUE ENTRY PAVILION



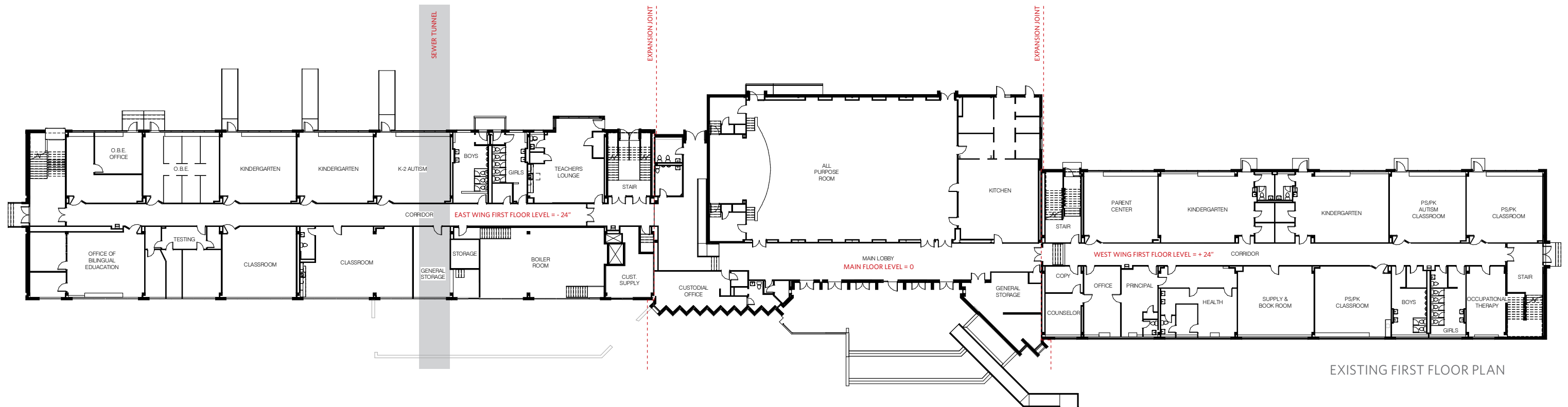
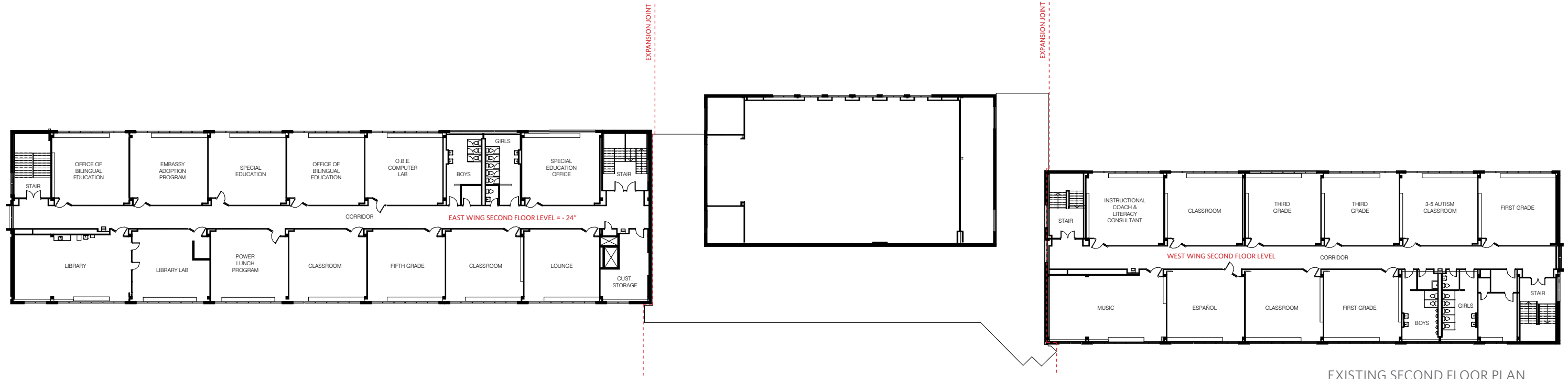


R STREET ENTRY PAVILION AND PERFORMANCE SPACE



# Phased Modernization

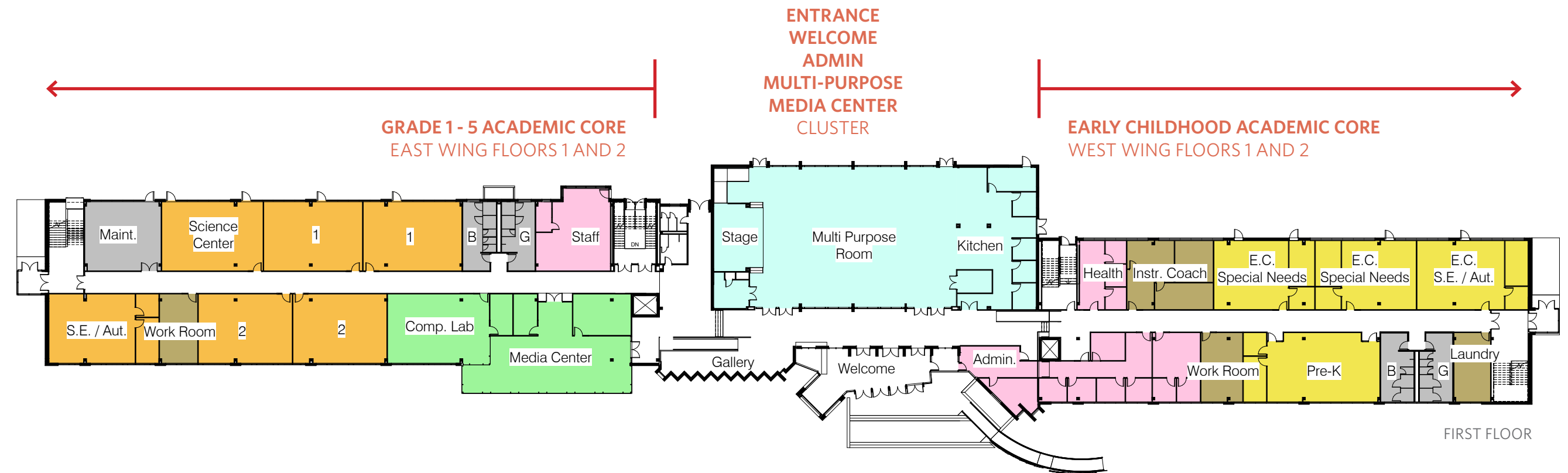
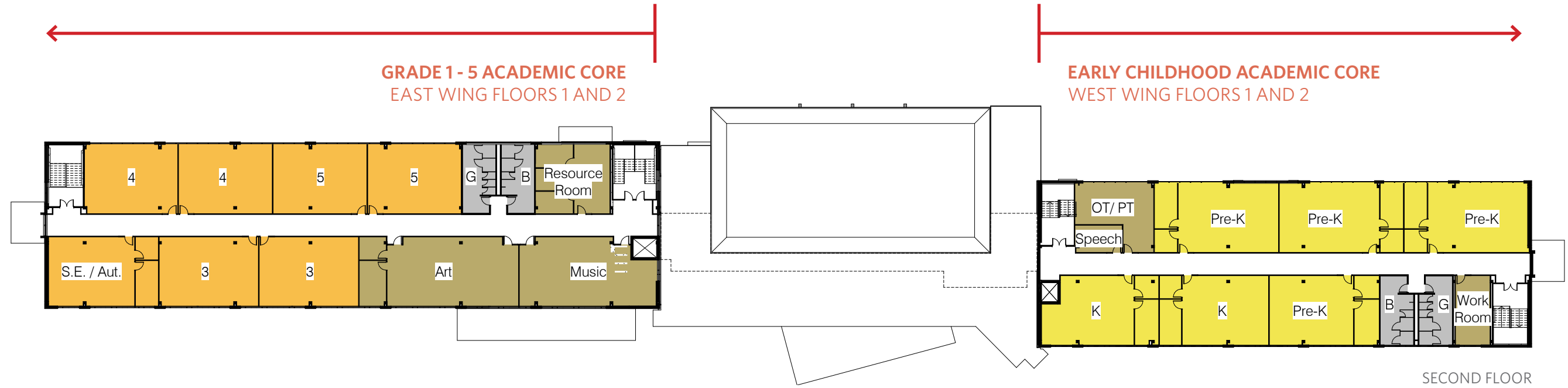
















AERIAL SITE VIEW





OPTION A: APPROACHING THE MAIN ENTRANCE FROM 13TH STREET





OPTION B: APPROACHING THE MAIN ENTRANCE FROM 13TH STREET





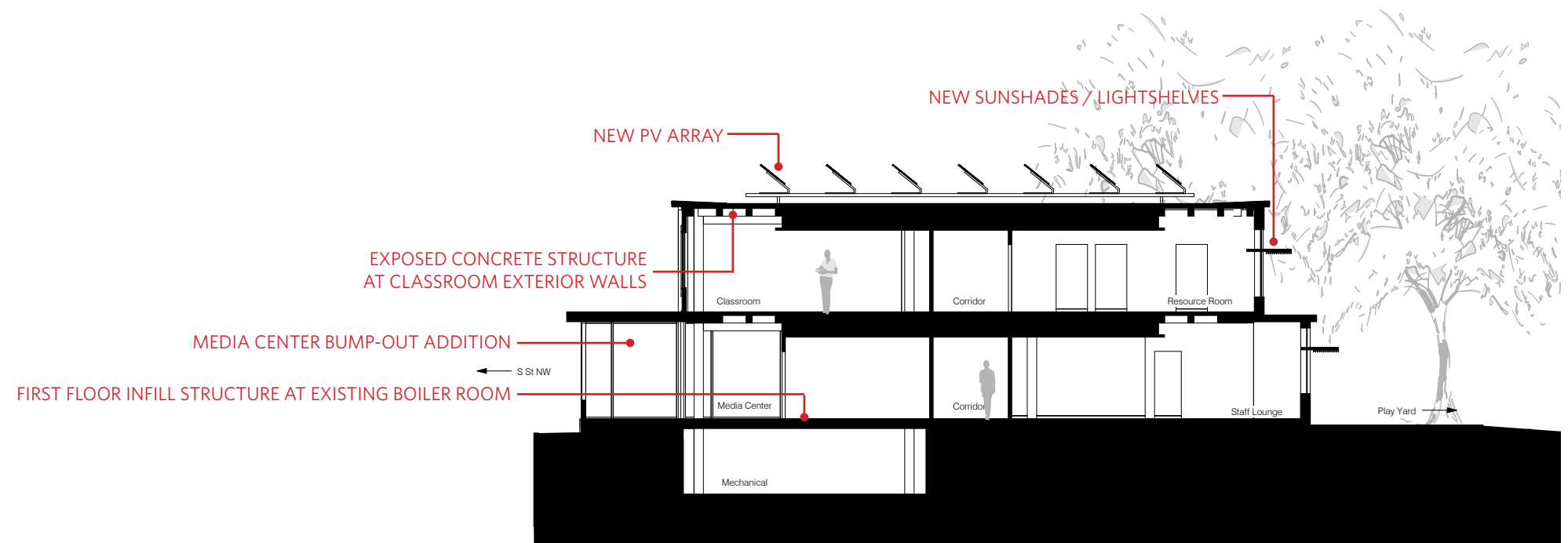
OPTION A: APPROACHING THE MAIN ENTRANCE FROM 12TH STREET



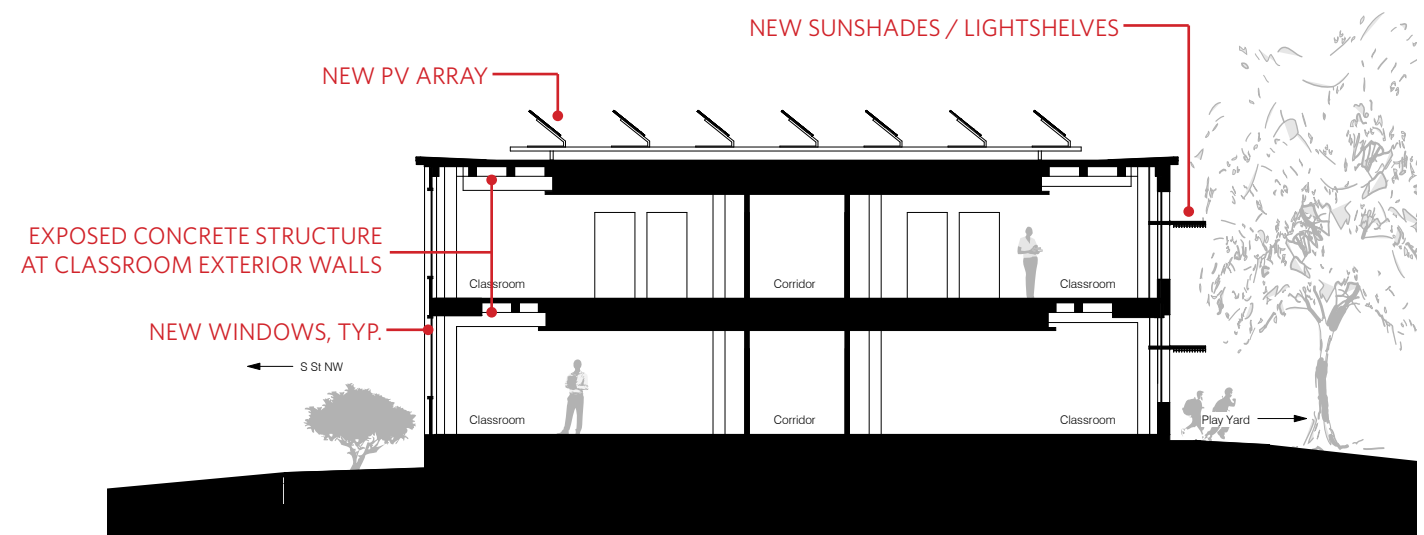


OPTION B: APPROACHING THE MAIN ENTRANCE FROM 12TH STREET



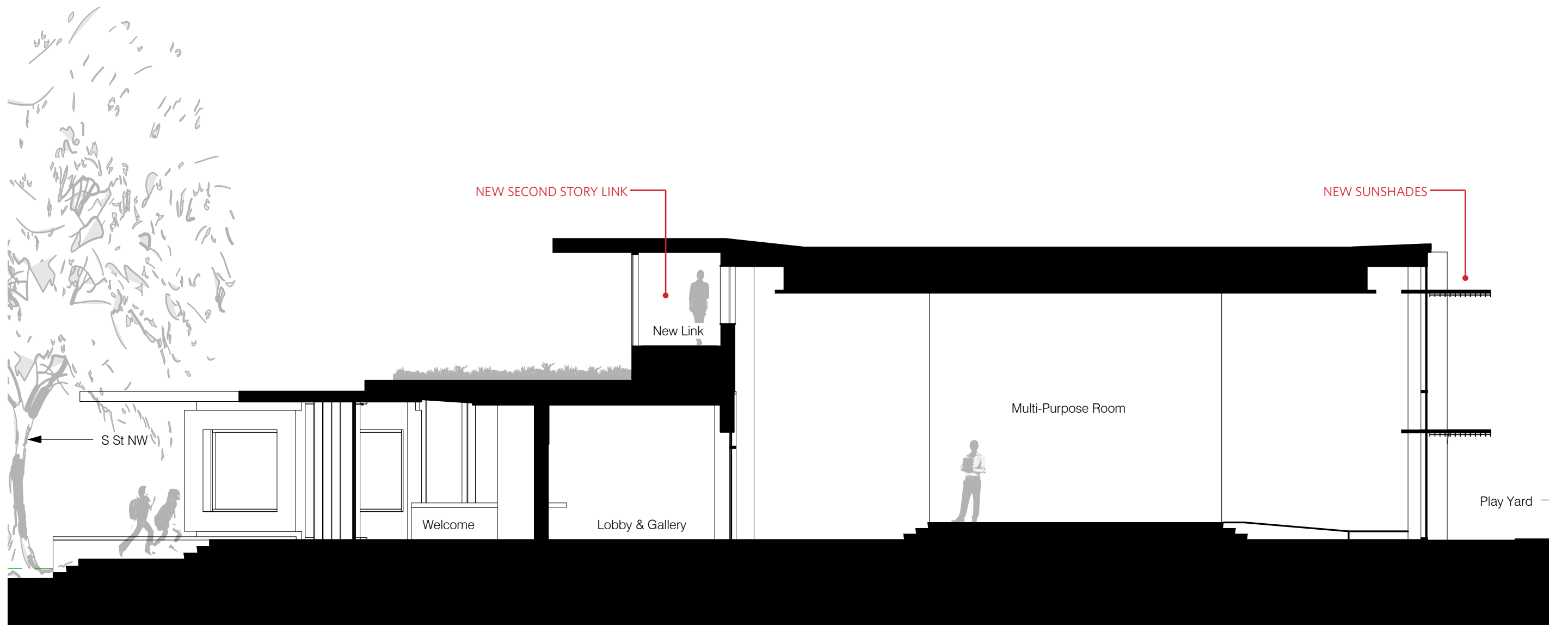


SECTION THROUGH EAST WING @ MEDIA CENTER



SECTION THROUGH WEST WING @ TYPICAL CLASSROOMS





SECTION THROUGH CENTRAL WING @ MULTI-PURPOSE ROOM AND NEW SECOND STORY LINK





AERIAL SITE VIEW





1228 9th Street, NW, Washington, DC 20001  
202 548 7570

[www.bellarchitects.com](http://www.bellarchitects.com)  
[www.newmanarchitects.com](http://www.newmanarchitects.com)

**Civil Engineer**

Wiles Mensch Corporation - DC  
739 8th Street, SE, 2nd Floor, Washington, DC 20003

**Landscape Architect**

Landscape Architecture Bureau, LLC  
714 7th Street SE, Washington, DC 20003

**Structural Engineer**

Robert Silman Associates  
1053 31st Street NW, Washington, DC 20007

**Mechanical, Electrical, Plumbing and Fire Protection Engineer**

Global Engineering Solutions of Washington DC  
1410 Q Street NW, Suite 100, Washington, DC 20009

**IT, Security and Audiovisual Consultant**

Educational Systems Planning  
49 Old Solomon's Island Road, Suite 301, Annapolis, MD 21401

**Foodservice Consultant**

Nyikos Associates, Inc.  
18219-A Flower Hill Way, Gaithersburg, MD 20879

**Acoustical Consultant**

Polysonics  
405 Belle Air Lane, Warrenton, VA 20186

**Environmental Consulting**

ECS Capitol Services, PLLC  
655 15th Street, NW, Washington, DC 20005

**Cost Estimating**

TCT Cost Consultants, LLC  
1090 Vermont Avenue NW, 4th Floor, Suite 230, Washington, DC 20005

**Sustainability Consulting**

GreenShape, LLC  
1001 Connecticut Avenue NW, Suite 725, Washington, DC 20036