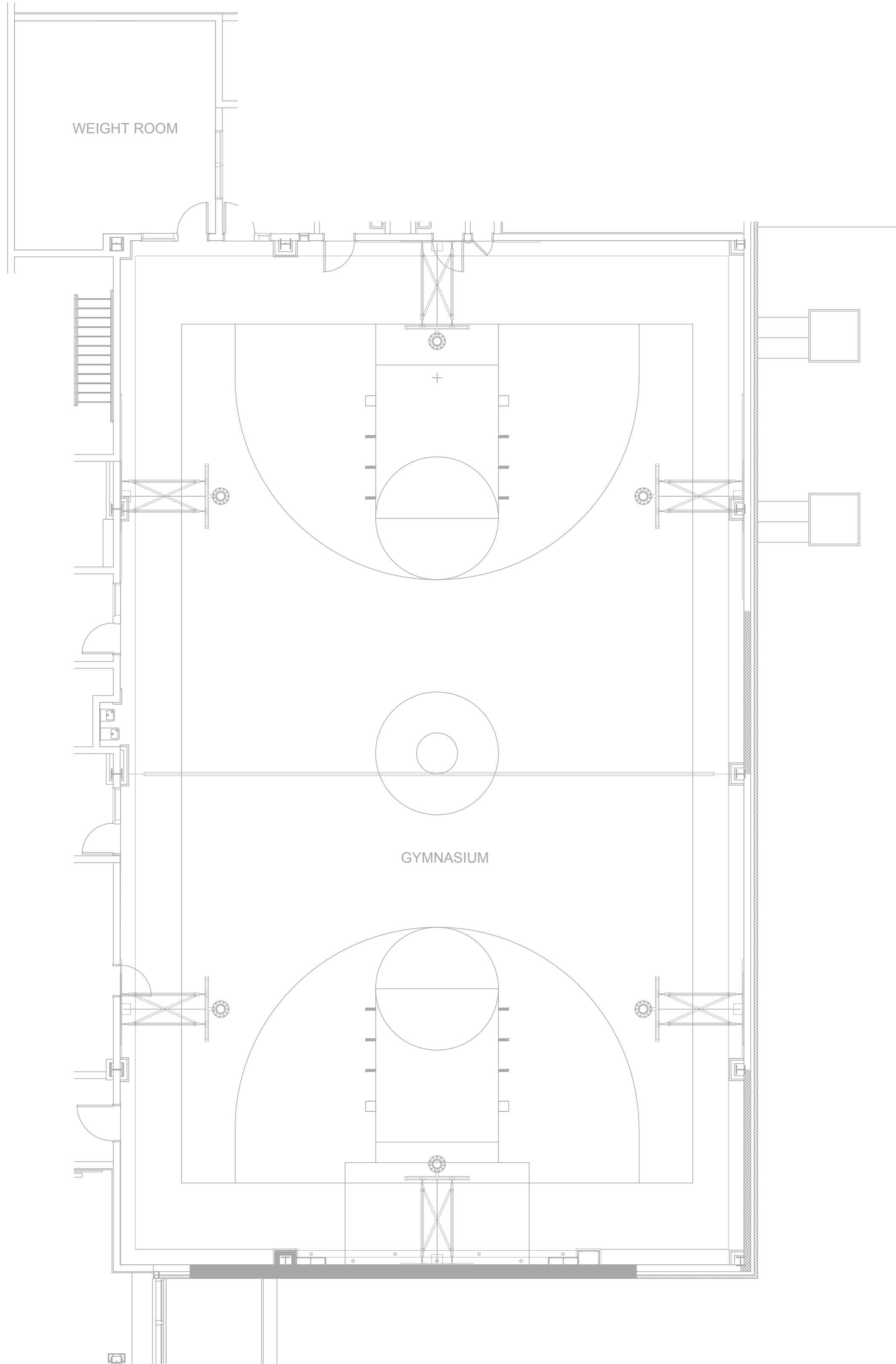


1  
AX101 GYMNASIUM FLOOR PLAN  
SCALE: 1/8" = 1'-0"

GENERAL NOTE:  
1. SEE ARCHITECTURAL DRAWINGS FOR ACOUSTIC PANEL  
LOCATIONS AND LAYOUT.  
2. SEE AX501 FOR ACOUSTICAL PANEL MOUNTING DETAIL.



2  
AX101 GYMNASIUM RCP  
SCALE: 1/8" = 1'-0"

OWNER

DGS (DEPARTMENT OF GENERAL SERVICES)  
1250 U STREET, NW,  
WASHINGTON, DC 20009

ARCHITECT

LANCE BAILEY & ASSOCIATES  
7600 GEORGIA AVENUE, NW  
WASHINGTON, DC 20012  
T: (301)565-2283 F: (301)665-2287

STRUCTURAL ENGINEER

CONSULTING STRUCTURAL ENGINEER  
6239 EXECUTIVE BULEVARD  
NORTH BETHESDA, MD 20852-3906  
T: 301-616-0949 F: 301-616-0949  
www.mrgengineers.com

ELECTRICAL ENGINEER

GLOBAL ENGINEERING SOLUTION  
5225 WISCONSIN AVENUE, NW, SUITE 300  
WASHINGTON, DC 20015  
T: (202) 495-7746 F: (202) 495-7747

CIVIL ENGINEER

10 G STREET, NE, SUITE # 430  
WASHINGTON, DC 20002  
T: (202) 289-4545 F: (202) 289-5051

ACOUSTICAL AND TECHNOLOGY CONSULTANT

POLYSONIC  
Acoustic & Technology Consulting

405 BELLE AIR LANE  
WARRENTON, VA 20186  
T: (840) 341-4988 F: (840) 341-0909

SUBMISSION SCHEDULE	DATE
50% DESIGN DEVELOPMENT	07/28/15
CONSTRUCTION DOCUMENTS	08/14/15

REVISION SCHEDULE	DATE
NO	DESCRIPTION

PROJECT:

## DYRS GYMNASIUM RENOVATION

1000 MOUNT OLIVET ROAD, NE  
WASHINGTON, DC 20002

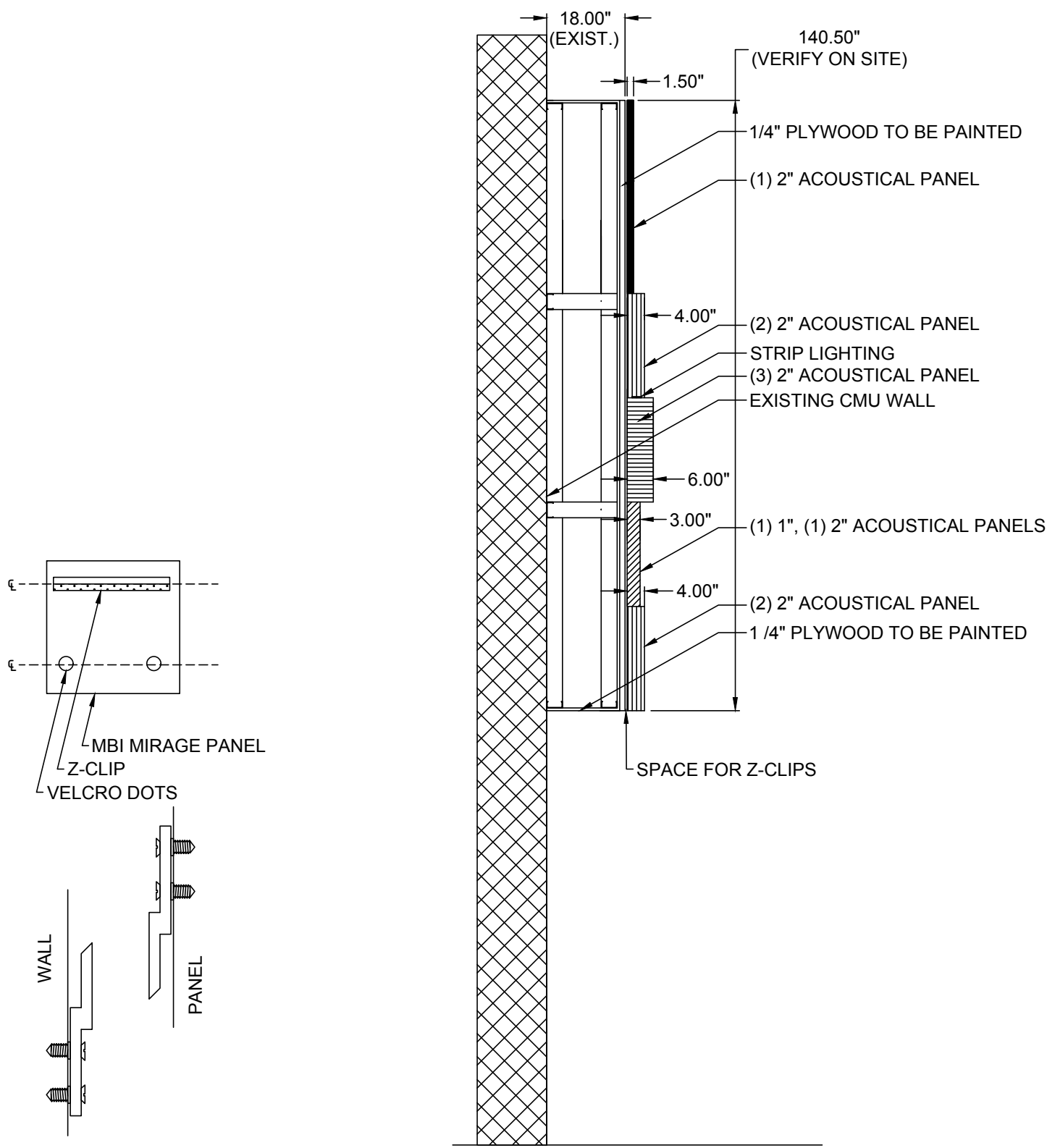
SHEET TITLE:  
**GYMNASIUM  
FLOOR PLAN % RCP**

PROJECT NO: 1310  
AUGUST 14, 2015

SCALE: AS NOTED

SHEET NO:

AX101



1 ACOUSTICAL WALL PANELS INSTALATION DETAIL  
AX501 SCALE: NTS

OWNER

DGS (DEPARTMENT OF GENERAL SERVICES)  
1250 U STREET, NW,  
WASHINGTON, DC 20009

ARCHITECT

LANCE BAILEY & ASSOCIATES  
7600 GEORGIA AVENUE, NW  
WASHINGTON, DC 20012  
T: (301)565-2283 F: (301)665-2287

STRUCTURAL ENGINEER

CONSULTING STRUCTURAL ENGINEER  
6239 EXECUTIVE BULEVARD  
NORTH BETHESDA, MD 20852-3906  
T: 301-616-0649 F: 301-616-0649  
www.mrgengineers.com

ELECTRICAL ENGINEER

GLOBAL ENGINEERING SOLUTION  
5225 WISCONSIN AVENUE, NW, SUITE 300  
WASHINGTON, DC 20015  
T: (202) 495-7746 F: (202) 495-7747

CIVIL ENGINEER

10 G STREET, NE, SUITE # 430  
WASHINGTON, DC 20002  
T: (202) 289-4545 F: (202) 289-5051

ACOUSTICAL AND TECHNOLOGY CONSULTANT

POLYSONICS

Acoustics & Technology Consulting

405 BELLE AIR LANE  
WARRENTON, VA 20186  
T: (540) 341-4988 F: (540) 341-0909

SUBMISSION SCHEDULE	DATE
50% DESIGN DEVELOPMENT	07/28/15
CONSTRUCTION DOCUMENTS	08/14/15

REVISION SCHEDULE	DATE
NO	DESCRIPTION

PROJECT:

DYRS GYMNASIUM  
RENOVATION

1000 MOUNT OLIVET ROAD, NE  
WASHINGTON, DC 20002

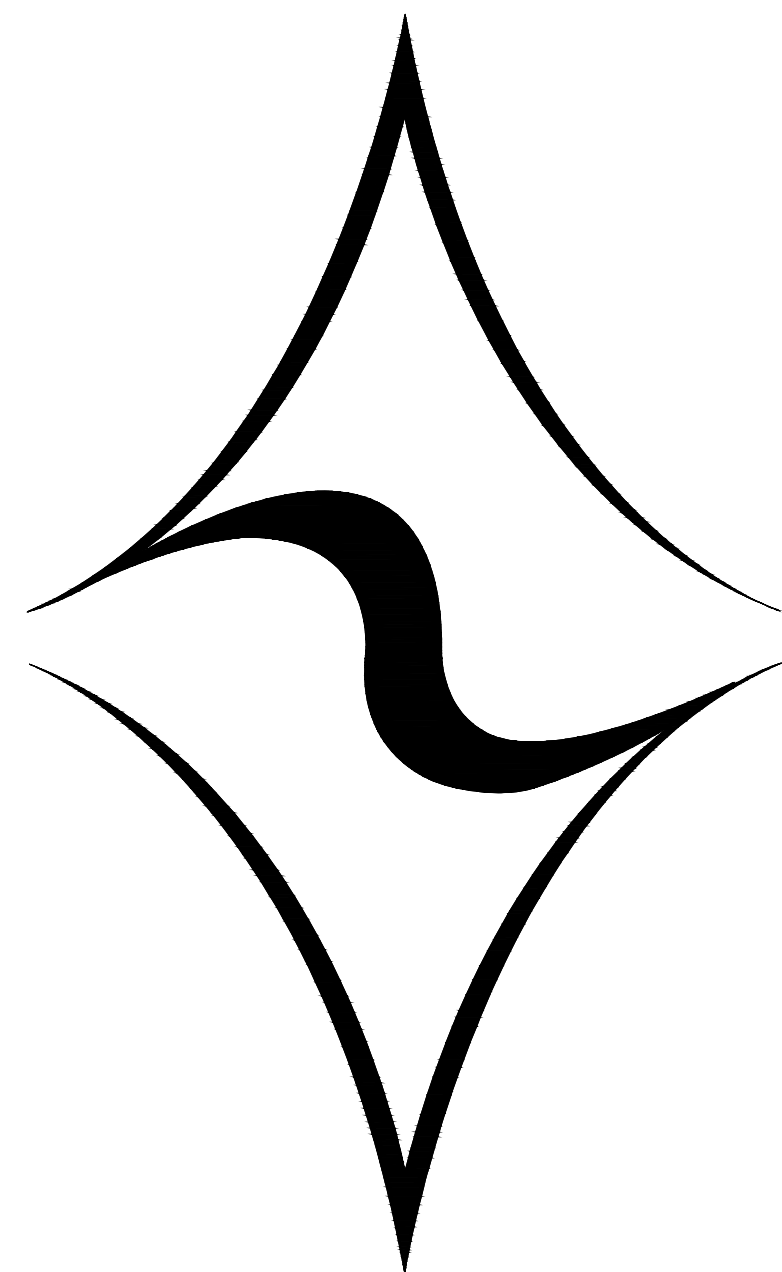
SHEET TITLE:  
DETAILS

PROJECT NO: 1310  
AUGUST 14, 2015  
SCALE: AS NOTED  
SHEET NO:

# DYRS GYMNASIUM RENOVATION

NE WASHINGTON D.C.

CONSTRUCTION DOCUMENTS  
AUDIOVISUAL SET  
AUGUST 14, 2015



P O L Y S O N I C S

Acoustics & Technology Consulting

405 Belle Air Lane  
Warrenton, VA 20186  
540-341-4988

OWNER

DGS (DEPARTMENT OF GENERAL SERVICES)  
1200 U STREET, NW  
WASHINGTON, DC 20009

ARCHITECT

LANCE BAILEY & ASSOCIATES  
7600 GEORGIA AVENUE, NW  
WASHINGTON, DC 20012  
T: (301) 565-2283 F: (301) 565-2287

STRUCTURAL ENGINEER

CONSULTING STRUCTURAL ENGINEER  
6239 EXECUTIVE BULEVARD  
NORTH BETHESDA, MD 20852-3906  
T: 301-616-0649 F: 301-616-0649  
www.mprngineers.com

ELECTRICAL ENGINEER

GLOBAL ENGINEERING SOLUTION  
5225 WISCONSIN AVENUE, NW, SUITE 300  
WASHINGTON, DC 20015  
T: (202) 495-7746 F: (202) 495-7747

CIVIL ENGINEER

POLYSONICS  
Acoustics & Technology Consulting  
405 BELLE AIR LANE  
WARRENTON, VA 20186  
T: (540) 341-4988 F: (540) 341-0909

SUBMISSION SCHEDULE	DATE
50% DESIGN DEVELOPMENT	07/28/15
CONSTRUCTION DOCUMENTS	08/14/15

REVISION SCHEDULE	DATE
NO DESCRIPTION	

PROJECT:  
**DYRS GYMNASIUM  
RENOVATION**

1000 MOUNT OLIVET ROAD, NE  
WASHINGTON, DC 20002

SHEET TITLE:  
**COVER**

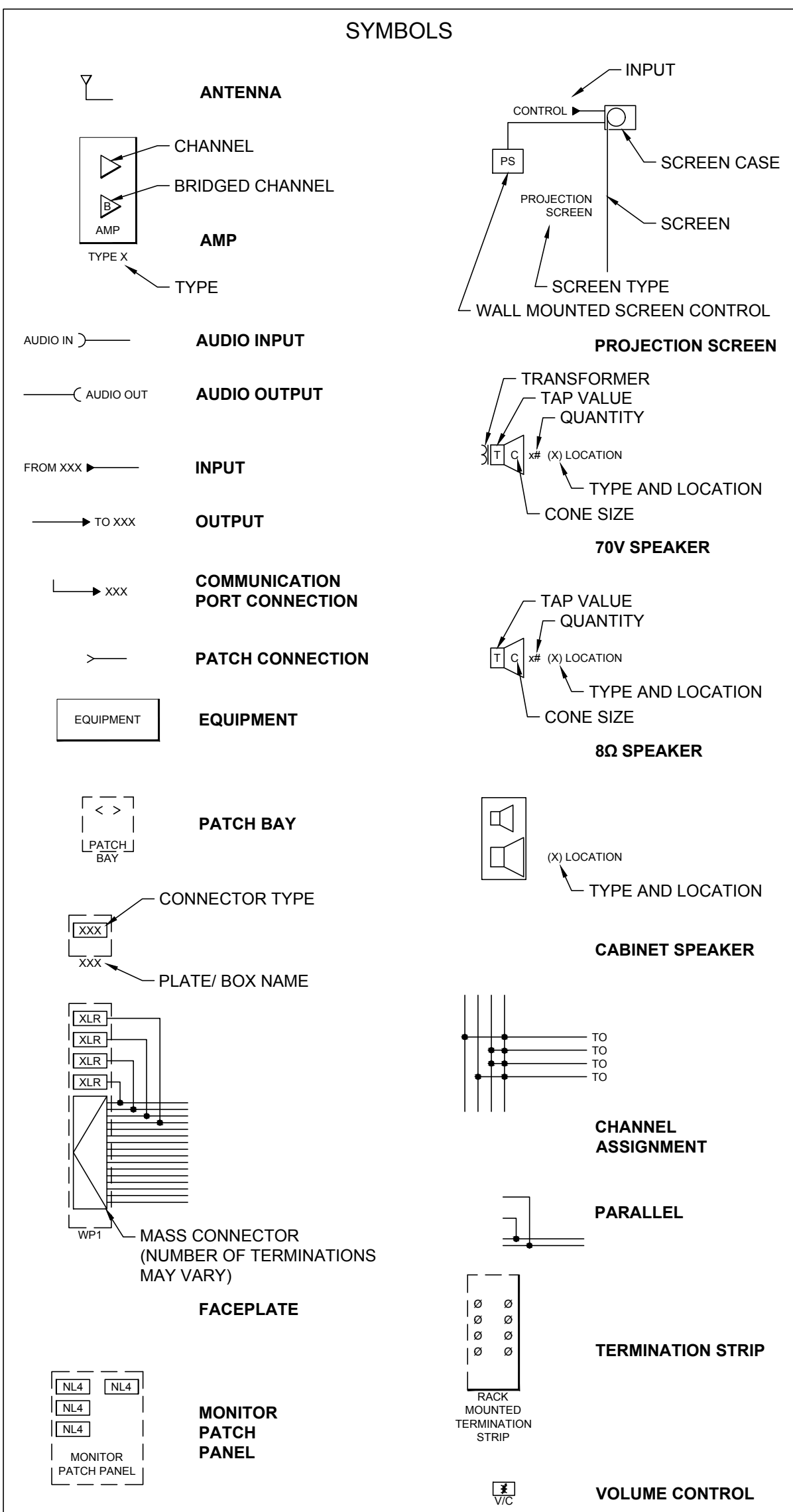
PROJECT NO: 1310  
AUGUST 14, 2015  
SCALE: AS NOTED  
SHEET NO:

TA000

SHEET INDEX

SHEET NUMBER	SHEET NAME
TA000	COVER
TA001	NOTES
TA002	NOTES
TA101	GYMNASIUM FLOOR PLAN & RCP
TA501	DETAILS

LINE DIAGRAM LEGENDS

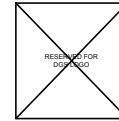


CONNECTION TYPES	
SYMBOL	CONNECTOR
1/4	TRS PHONE
1/8	3.5MM TRS MINI PHONE
BNC	BAYONET NEILL-CONCELMAN
DIN	DEUTSCHES INSTITUT FÜR NORMUNG
DP	DISPLAY PORT
DVID	DVI-DIGITAL DUAL LINK
DVII	DVI-INTEGRATED DUAL LINK
F	COAX F
HD15	VGA 15-PIN
HD9	RS232 9-PIN
HDMI	HDMI
LC	FIBER OPTIC LC
LGT	LIGHTNING
MASS	MASS CONNECTOR
MXLR	MINI XLR MALE
NL4	NEUTRIK NL4
NL8	NEUTRIK NL8
PHX	PHOENIX
RCA	PHONO
RJ11	PHONE CONNECTOR
RJ45	CATEGORY CABLE
SC	FIBER OPTIC SC
SJ45	SHIELDED RJ45
ST	FIBER OPTIC ST
SVID	S-VIDEO MINI DIN
USBA	UNIVERSAL SERIAL BUS - TYPE A
USBB	UNIVERSAL SERIAL BUS - TYPE B
USBM	UNIVERSAL SERIAL BUS - TYPE B MINI
XLR	XLR FEMALE
XLR4	XLR 4-PIN FEMALE
XLR5	XLR 5-PIN FEMALE
XLRM	XLR MALE

## ABBREVIATIONS

AAC	ABOVE ACCESSIBLE CEILING	TC	TELECOMMUNICATIONS CONTRACTOR
AFF	ABOVE FINISHED FLOOR	TGB	TELECOMMUNICATIONS GROUNDING BUS BAR
AVC	AUDIOVISUAL CONTRACTOR	TMGB	TELECOMMUNICATIONS MAIN GROUNDING BUS BAR
AVCT	AUDIOVISUAL CABLE TRAY	UON	UNLESS OTHERWISE NOTED
AVR	AUDIO-VIDEO RACK		
CATV	CABLE TELEVISION		
CT	CABLE TRAY		
EC	ELECTRICAL CONTRACTOR		
G	GANG		
GC	GENERAL CONTRACTOR		
IDF	INTERMEDIATE DATA FRAME		
JBx	JUNCTION BOX "X"		
MDF	MAIN DATA FRAME		
MER	MAIN EQUIPMENT ROOM		
MTD	MOUNTED		
PSRH	PROJECT STANDARD RECEPTACLE HEIGHT		
PSSH	PROJECT STANDARD SWITCH HEIGHT		
PTZ	PAN/ TILT/ ZOOM		
RCP	REFLECTED CEILING PLAN		
SEC	STAGE EQUIPMENT CONTRACTOR		
STC	STUB TO CABLE TRAY		
STD	STANDARD		

OWNER \_\_\_\_\_



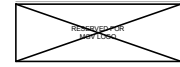
DGS (DEPARTMENT OF GENERAL SERVICES)  
1250 U STREET, NW.  
WASHINGTON, DC 20009

ARCHITECT



**LANCE BAILEY & ASSOCIATES**  
7600 GEORGIA AVENUE, NW  
WASHINGTON, DC 20012  
T: (301)565-2283 F: (301)565-2287

STRUCTURAL ENGINEER



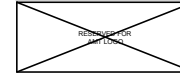
**CONSULTING STRUCTURAL ENGINEER**  
6239 EXECUTIVE BULEVARD  
NORTH BETHESDA, MD 20852-3906  
T: 301-816-0648 F: 301-816-0649  
[www.mgvengineers.com](http://www.mgvengineers.com)

ELECTRICAL ENGINEER



**GLOBAL ENGINEERING SOLUTION**  
5225 WISCONSIN AVENUE, NW, SUITE 300  
WASHINGTON, DC 20015  
T: (202) 495-7746 F: (202) 495-7747

CIVIL ENGINEER



10 G STREET, NE, SUITE # 430  
WASHINGTON, DC 20002  
T: (202) 289-4545 F: (202) 289-5051

ACOUSTICAL AND TECHNOLOGY CONSULTANT



405 BELLE AIR LANE  
WARRENTON, VA 20186  
T: (540) 341-4988 F: (540) 341-0909

SUBMISSION SCHEDULE	DATE
50% DESIGN DEVELOPMENT	07/28/15
CONSTRUCTION DOCUMENTS	08/14/15

[illegible]

PROJECT:

# DYRS GYMNASIUM RENOVATION

1000 MOUNT OLIVET ROAD, NE  
WASHINGTON, DC 20002

SHEET TITLE:

## NOTES

PROJECT NO: 1310

AUGUST 14, 2015

SCALE: AS NOTED

SHEET NO: \_\_\_\_\_

TA001

DEVICE SCHEDULE

DEVICE NAME	DESCRIPTION	POWER	PHONE/DATA	BOX SIZE	HEIGHT	Comments
S	CEILING MOUNTED LOUDSPEAKER	NO	NO	NA	CEILING	
WP1	WALL MOUNTED BOX AND PLATE FOR AV CONECTIONS IN GYM	YES (QUAD)	NA	2-GANG	RECEPTACLE HEIGHT	

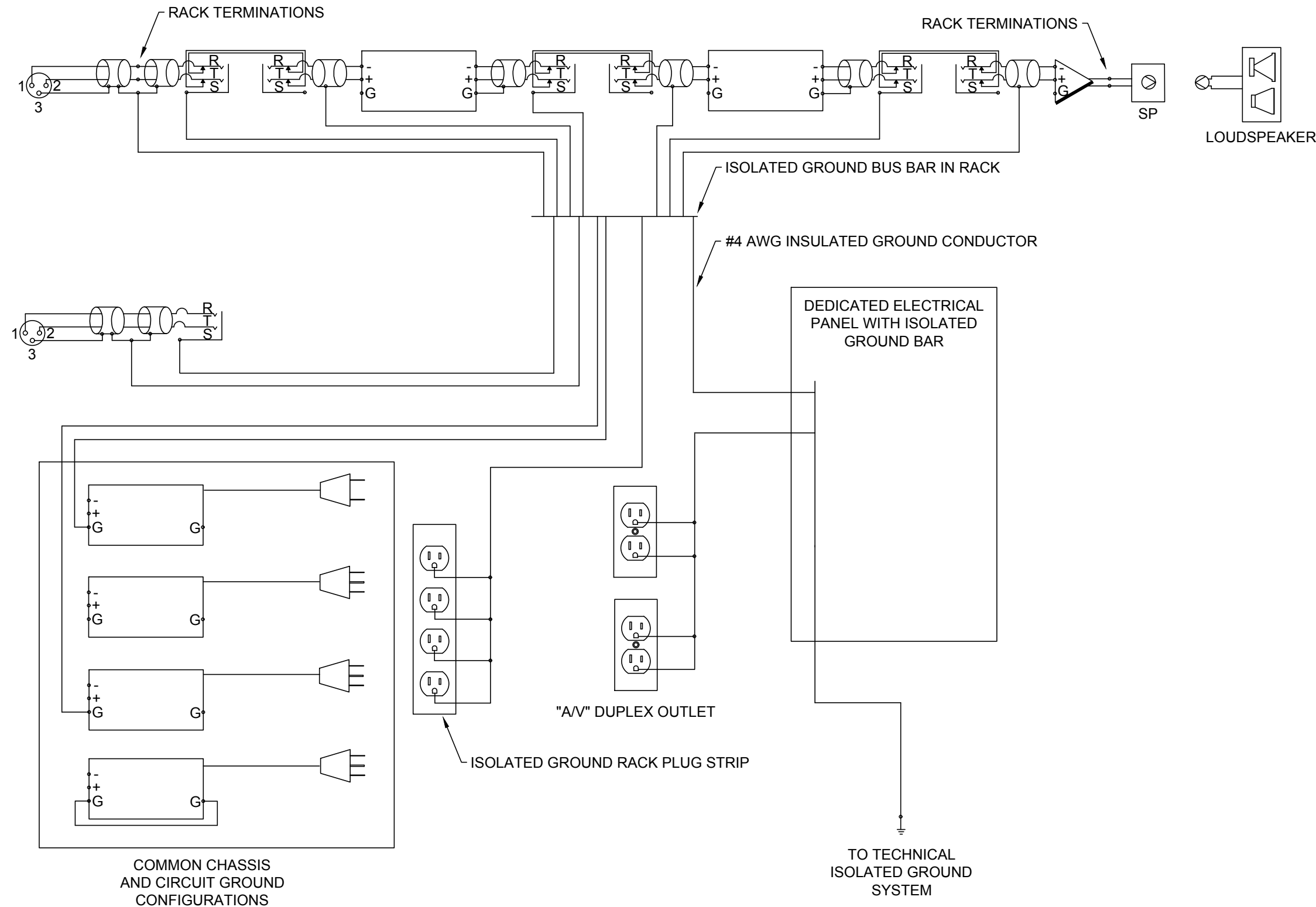
GENERAL PROJECT NOTES

- REFER TO ARCHITECTURAL DRAWINGS FOR EXACT LOCATIONS OF ALL AV DEVICES.
- DEVICE ICONS ARE NOT SCALED. DEVICE WILL BE CENTERED WHERE THE SYMBOL IS LOCATED AT EACH FLOOR, CEILING AND WALL LOCATION.
- ALL AV PLATES PROVIDED AND INSTALLED BY AV CONTRACTOR UNLESS OTHERWISE NOTED.

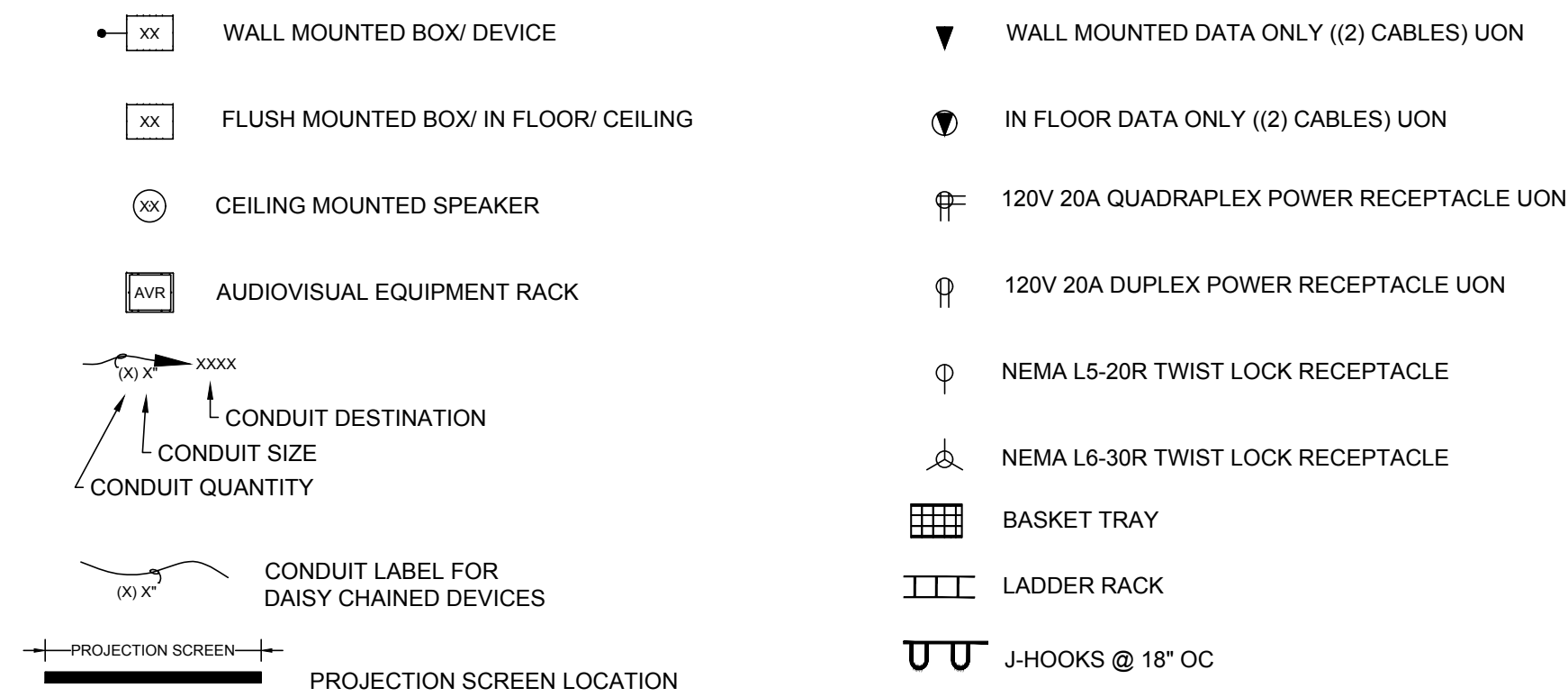
AV CONDUIT AND BACK BOX REQUIREMENTS

- AV DRAWINGS DO NOT INCLUDE CONDUIT FOR ELECTRICAL OR TELECOM REQUIREMENTS.
- CONDUIT ARROWS ON DRAWINGS DO NOT SHOW DIRECTION OR PATH OF CONDUIT.
- ALL JUNCTION BOXES/BACK BOXES AND CONDUIT SUPPLIED AND INSTALLED BY ELECTRICAL CONTRACTOR UNLESS OTHERWISE NOTED.
- INSTALL ALL CONDUIT WITH PULL STRING. ANY CONDUIT NOT USED DURING PROJECT SHALL HAVE PULL STRING REMAIN IN PLACE FOR FUTURE USE.
- ALL FIXTURE BOXES ASSUME DOUBLE DEEP UNLESS OTHERWISE NOTED.
- ALL AV CONDUIT IS 3/4" UNLESS OTHERWISE NOTED.
- AV CONTRACTOR TO PROVIDE BLANK COVER PLATES FOR ALL WALL/FLOOR BOXES THAT ARE NOT UTILIZED.
- INSTALL RACEWAY AND OUTLET BOX SYSTEM CONTINUOUS FROM OUTLET TO JUNCTION BOX AND TO EQUIPMENT LOCATION WITH NO MORE THAN FOUR (4) QUARTER BENDS (360 DEGREES TOTAL).
- PULL BOXES SHALL BE PROVIDED EVERY 100 FEET OF CONTINUOUS CONDUIT RUN.
- PULL BOXES SHALL NOT BE USED IN-LEIU OF CONDUIT BENDS. PULL BOXES ARE FOR STRAIGHT THROUGH CABLE ROUTING ONLY.
- INSTALL RACEWAY FROM OUTLET BOXES TO CABLE LADDER IN CORRIDOR AS INDICATED WHERE REQUIRED.
- INSTALL RACEWAY FROM OUTLET BOXES TO ACCESSIBLE CEILING SPACES WHERE REQUIRED.
- ALL J-HOOKS REQUIRED TO SUPPORT AV CABLE TO BE INSTALLED BY GC.
- BUSH AND REAM ALL CONDUIT ENDS. TERMINATE WITH INSULATED BUSHING IF CONDUIT END IS EXPOSED.
- CLAMP CONDUIT TO TRAY/LADDER FOR PROPER SUPPORT WHERE REQUIRED.
- ALL DEDICATED AV CABLE TRAY FOR AV RACKS SHALL BE PROVIDED AND INSTALLED BY AV CONTRACTOR UNLESS OTHERWISE NOTED.
- WHERE CABLE TRAY/LADDER IS NOT UTILIZED, MAKE CONTINUOUS RUNS FROM BOX TO BOX WITH ISOLATION FROM BUILDING SYSTEMS AS REQUIRED.
- PROVIDE SLEEVES AND APPROPRIATE WALL PENETRATIONS AS NEEDED FOR CABLE PATHWAYS FROM OUTLET AND JUNCTION BOX LOCATIONS TO CORRIDOR CABLE TRAY AND/OR J-HOOKS. MINIMUM SLEEVE SIZE FOR TYPICAL SPACES SHALL BE 2" EMT. FIRESTOP PER CODE AND FIREWALL RATINGS.

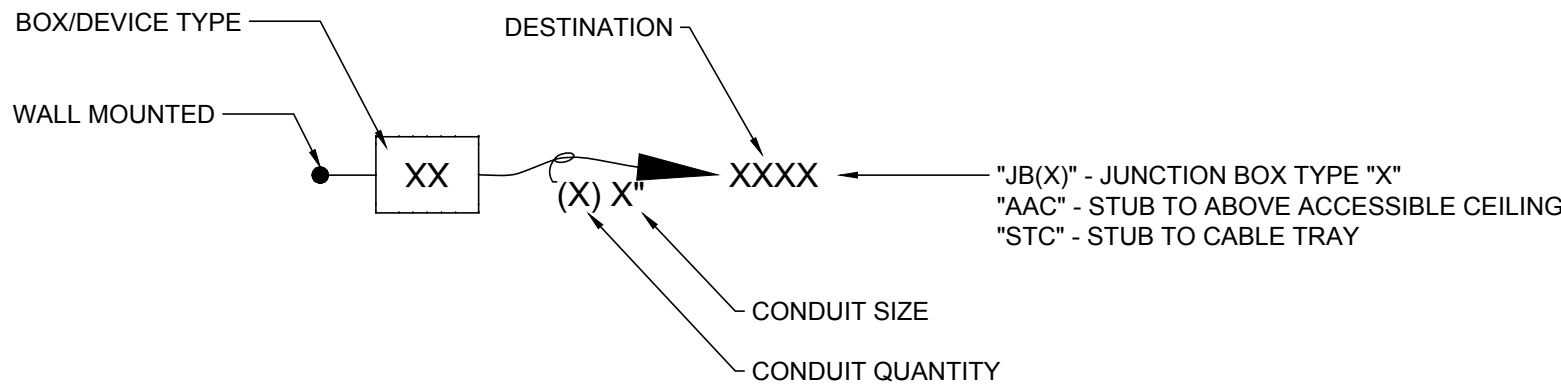
TECHNICAL GROUNDING DETAILS



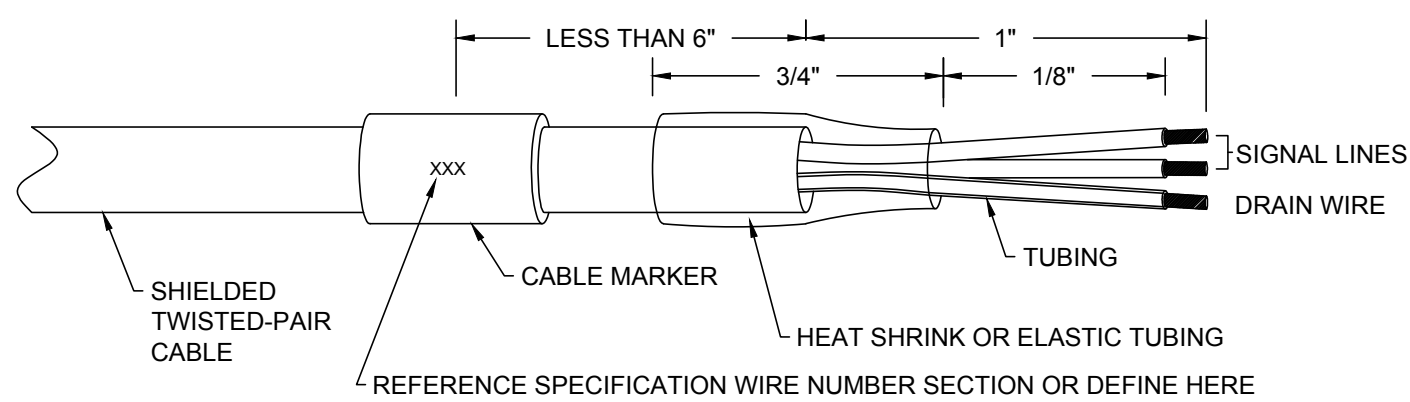
AV INFRASTRUCTURE DEVICE LEGEND



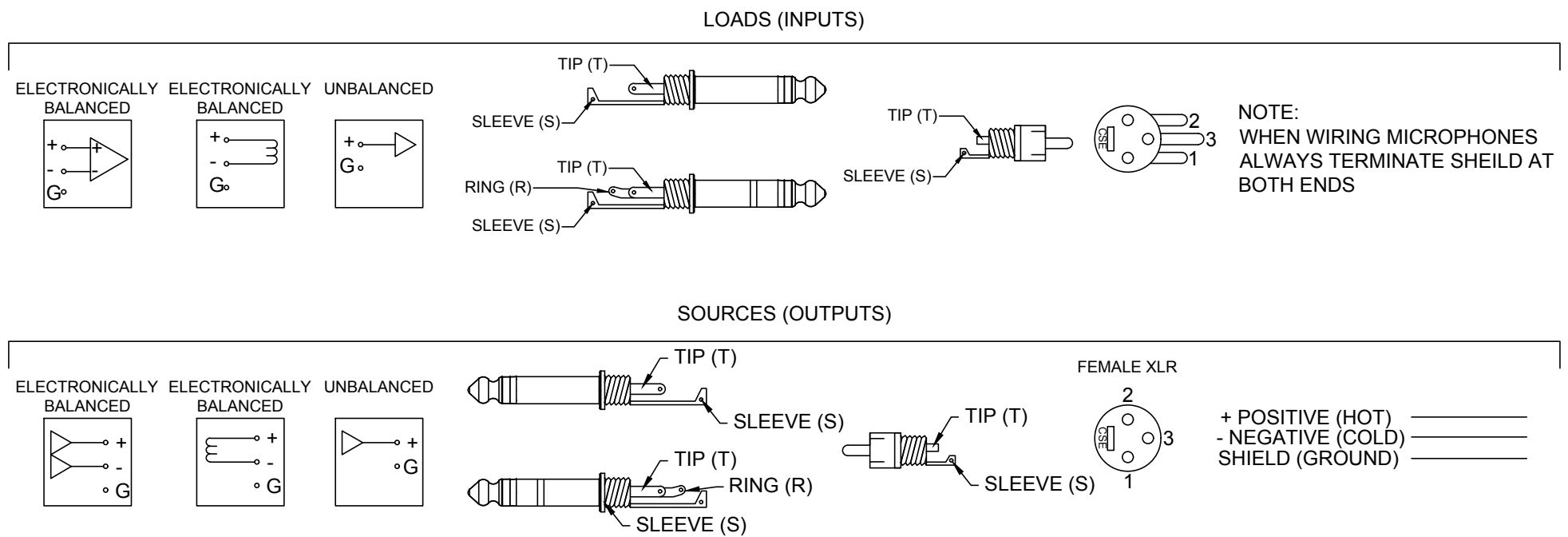
AV INFRASTRUCTURE DETAILS



WIRE LABELING DETAIL



AUDIO PIN WIRING DETAIL



OWNER  
DGS (DEPARTMENT OF GENERAL SERVICES)  
1250 U STREET, NW,  
WASHINGTON, DC 20009

ARCHITECT  
LANCE BAILEY & ASSOCIATES  
7600 GEORGIA AVENUE, NW  
WASHINGTON, DC 20012  
T: (301)565-2283 F: (301)665-2287

STRUCTURAL ENGINEER  
CONSULTING STRUCTURAL ENGINEER  
6239 EXECUTIVE BULEVARD  
NORTH BETHESDA, MD 20852-3906  
T: 301-616-0949 F: 301-616-0949  
www.mpgengineers.com

ELECTRICAL ENGINEER  
GLOBAL ENGINEERING SOLUTION  
5225 WISCONSIN AVENUE, NW, SUITE 300  
WASHINGTON, DC 20015  
T: (202) 495-7746 F: (202) 495-7747

CIVIL ENGINEER  
10 G STREET, NE, SUITE # 430  
WASHINGTON, DC 20002  
T: (202) 289-4545 F: (202) 289-5051

ACOUSTICAL AND TECHNOLOGY CONSULTANT  
POLYSONICS  
Acoustics & Technology Consulting  
405 BELLE AIR LANE  
WARRENTON, VA 20186  
T: (840) 341-4988 F: (840) 341-9909

SUBMISSION SCHEDULE	DATE
50% DESIGN DEVELOPMENT	07/28/15
CONSTRUCTION DOCUMENTS	08/14/15

REVISION SCHEDULE	DATE
NO DESCRIPTION	

PROJECT:

## DYRS GYMNASIUM RENOVATION

1000 MOUNT OLIVET ROAD, NE  
WASHINGTON, DC 20002

SHEET TITLE:

### NOTES

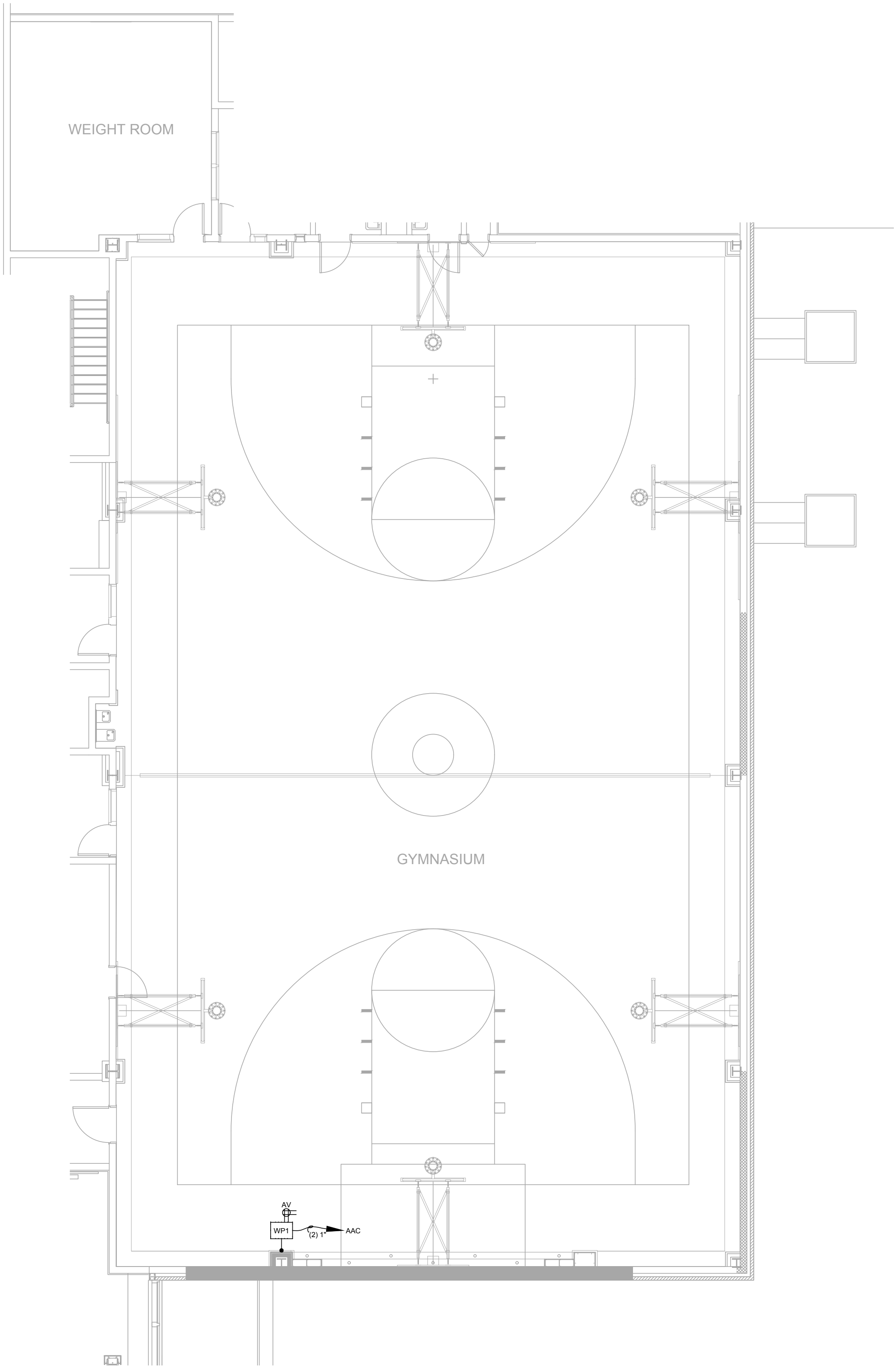
PROJECT NO: 1310

AUGUST 14, 2015

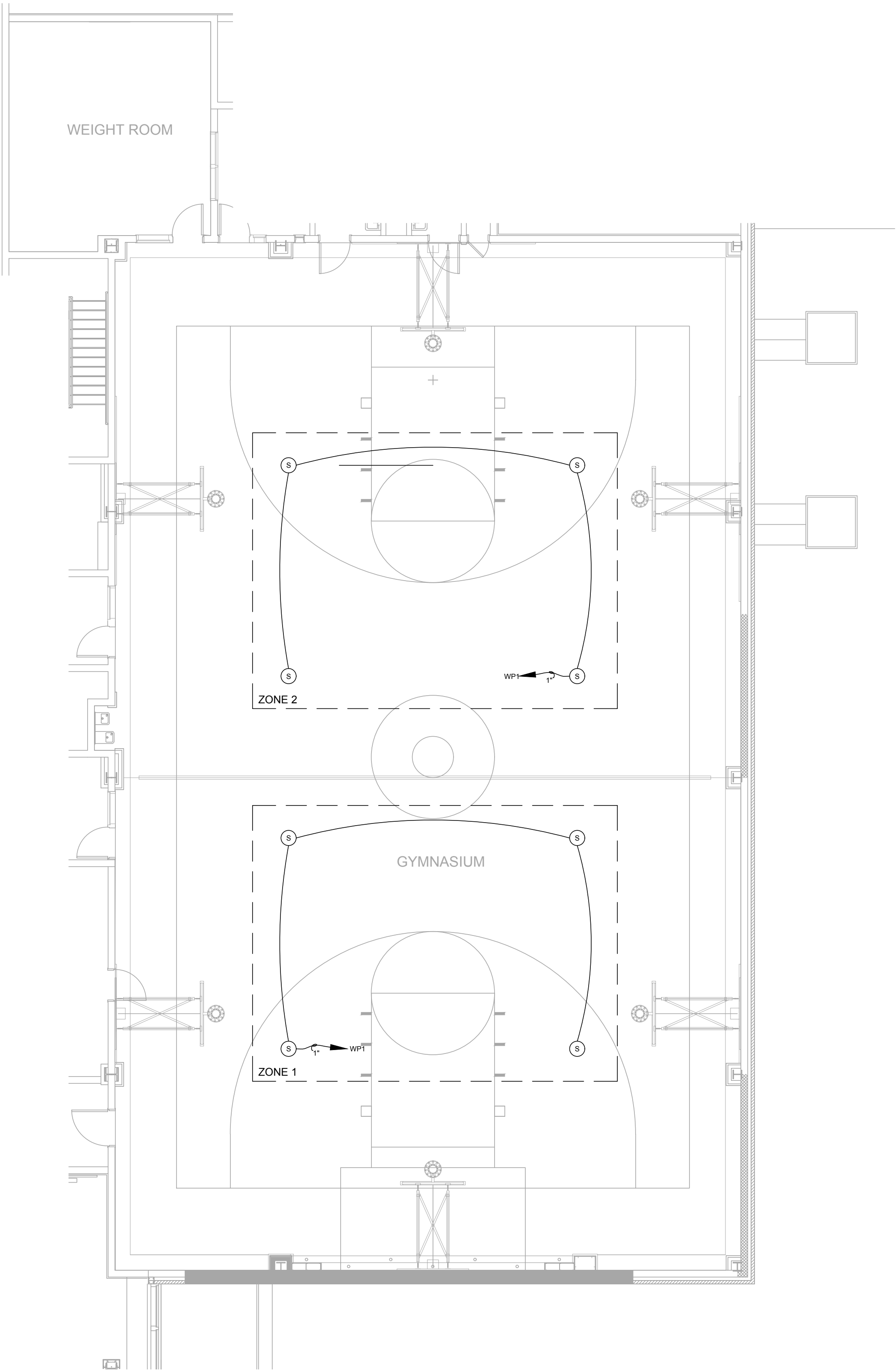
SCALE: AS NOTED

SHEET NO:

TA002



1 GYMNASIUM FLOOR PLAN  
TA101 SCALE: 1/8" = 1'-0"



2 GYMNASIUM RCP  
TA101 SCALE: 1/8" = 1'-0"

OWNER  
DGS (DEPARTMENT OF GENERAL SERVICES)  
1200 U STREET, NW,  
WASHINGTON, DC 20009

ARCHITECT  
LANCE BAILEY & ASSOCIATES  
7600 GEORGIA AVENUE, NW  
WASHINGTON, DC 20012  
T: (301)565-2283 F: (301)665-2287

STRUCTURAL ENGINEER  
CONSULTING STRUCTURAL ENGINEER  
6239 EXECUTIVE BULEVARD  
NORTH BETHESDA, MD 20852-3906  
T: 301-616-0648 F: 301-616-0649  
www.mgvengr.com

ELECTRICAL ENGINEER  
GLOBAL ENGINEERING SOLUTION  
5225 WISCONSIN AVENUE, NW, SUITE 300  
WASHINGTON, DC 20015  
T: (202) 495-7746 F: (202) 495-7747

CIVIL ENGINEER  
10 G STREET, NE, SUITE # 430  
WASHINGTON, DC 20002  
T: (202) 289-4545 F: (202) 289-5051

ACOUSTICAL AND TECHNOLOGY CONSULTANT  
POLYSONICS  
405 BELLE AIR LANE  
WARRENTON, VA 20186  
T: (840) 341-4988 F: (840) 341-0909

SUBMISSION SCHEDULE	DATE
50% DESIGN DEVELOPMENT	07/28/15
CONSTRUCTION DOCUMENTS	08/14/15

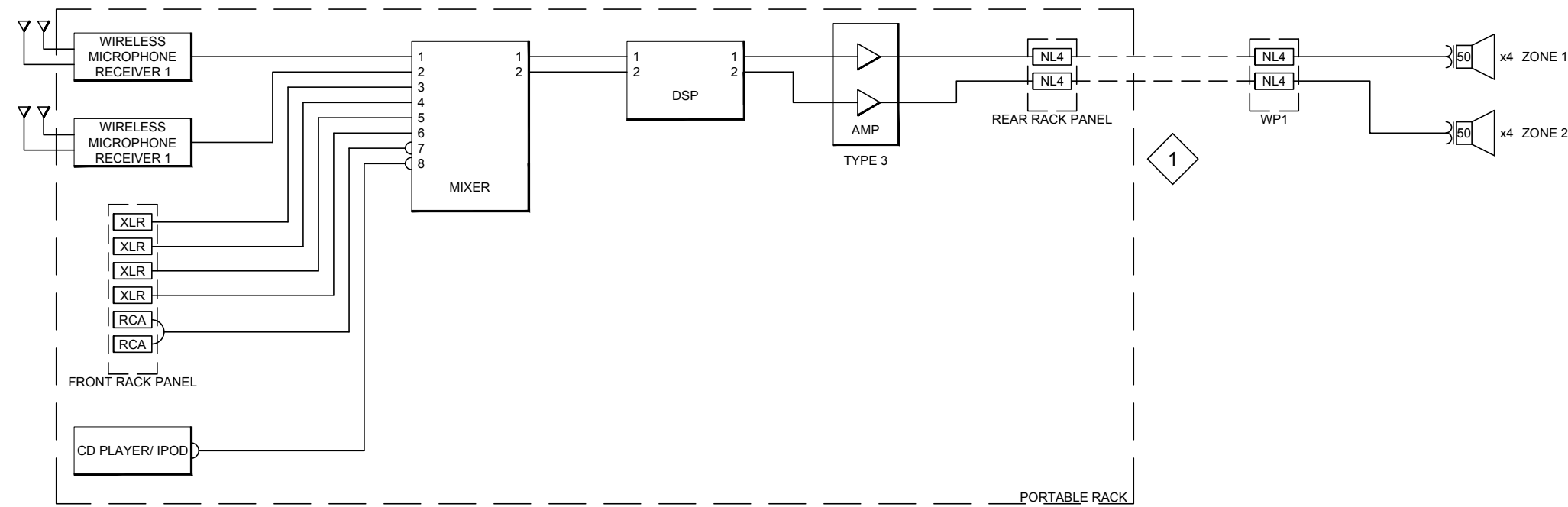
REVISION SCHEDULE	DATE
NO DESCRIPTION	

PROJECT:  
**DYRS GYMNASIUM  
RENOVATION**

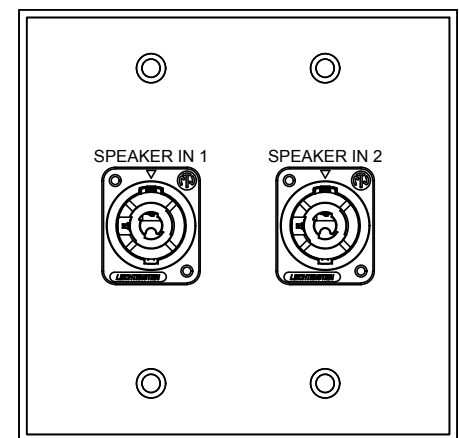
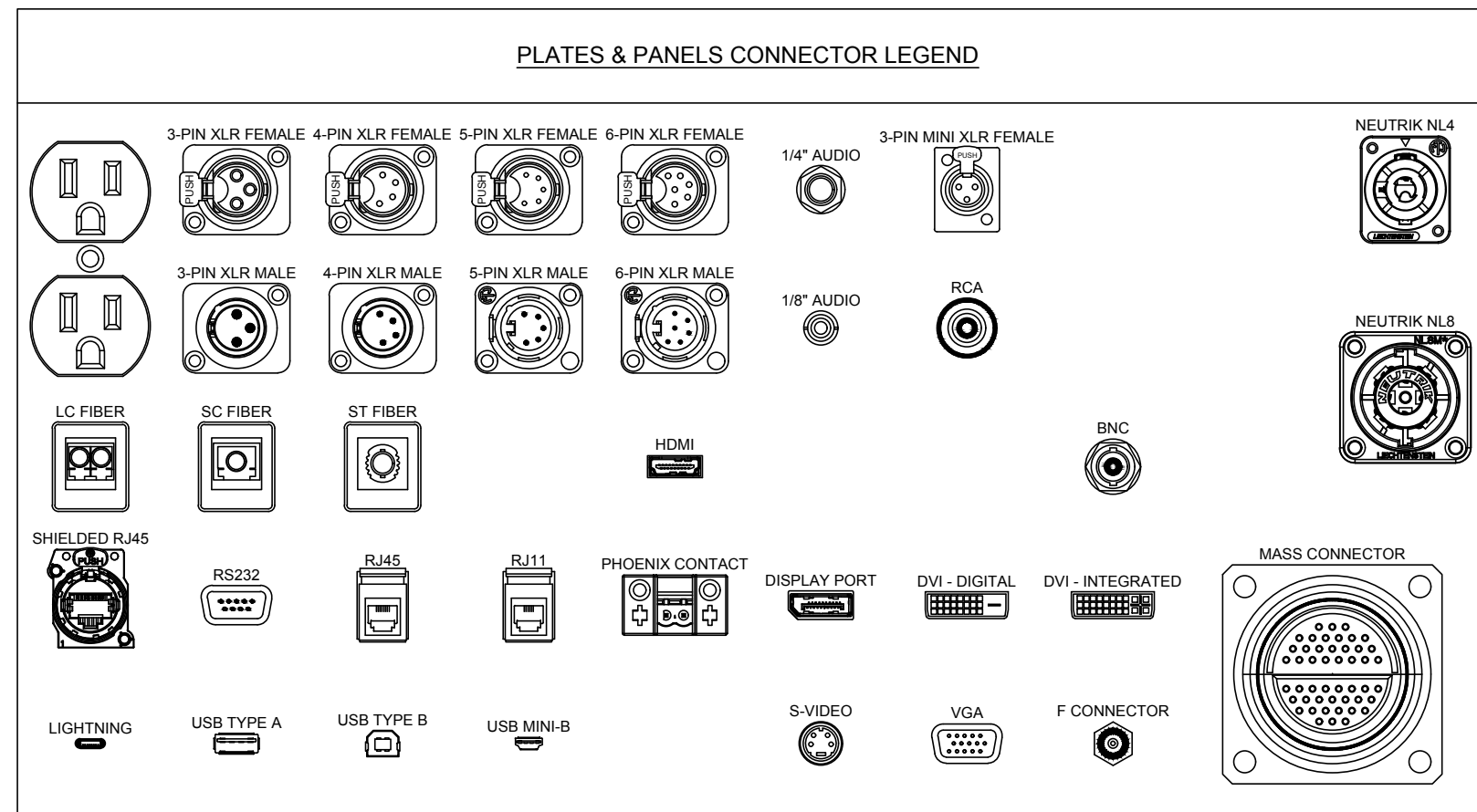
1000 MOUNT OLIVET ROAD, NE  
WASHINGTON, DC 20002

SHEET TITLE:  
**GYMNASIUM  
FLOOR PLAN % RCP**

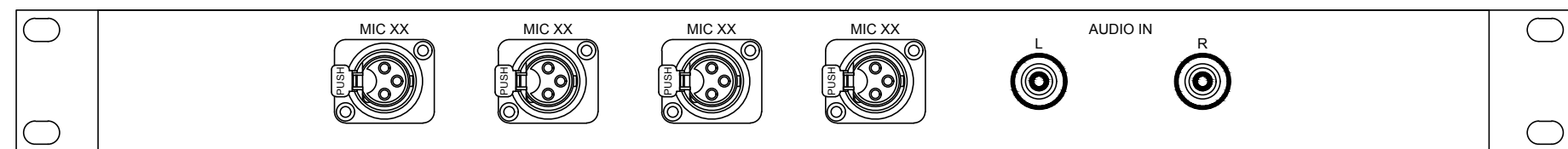
PROJECT NO: 1310  
AUGUST 14, 2015  
SCALE: AS NOTED  
SHEET NO:



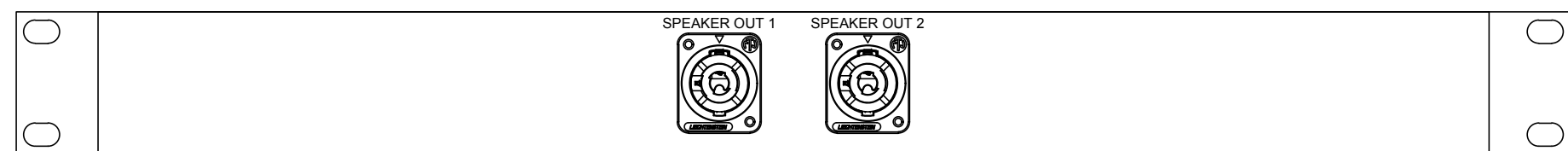
1 GYMNASIUM AUDIO LINE DIAGRAM  
TA501 SCALE: NTS



WPT1  
SPEAKER INPUT WALL PLATE  
QUANTITY: 1  
SIZE: DOUBLE GANG  
FINISH: BLACK W/ WHITE LETTERING  
NOTE: -

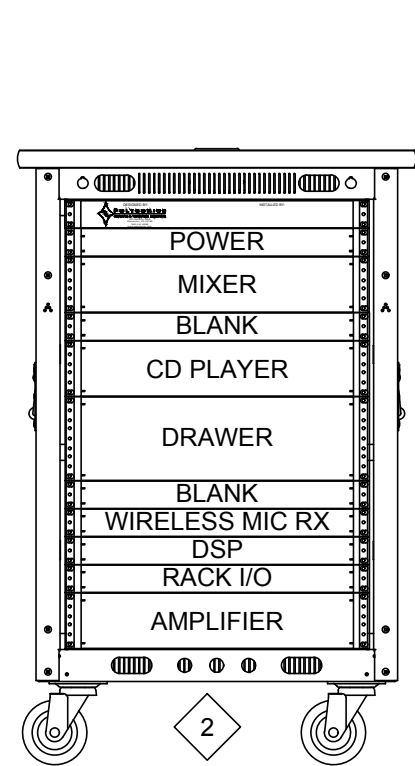


FRONT  
FRONT RACK INPUT PANEL  
QUANTITY: 1  
SIZE: 1 RU  
FINISH: BLACK W/ WHITE LETTERING  
NOTE: -



REAR  
REAR RACK INPUT PANEL  
QUANTITY: 1  
SIZE: 1 RU  
FINISH: BLACK W/ WHITE LETTERING  
NOTE: -

3 PLATES AND PANEL DETAILS  
TA501 SCALE: NTS



GYMNASIUM PORTABLE RACK  
TOTAL AMPS: 3  
TOTAL WATTS: 228  
TOTAL BTU: 776  
CIRCUITS: (1) 20A, 120V

2 GYMNASIUM PORTABLE RACK ELEVATION  
TA501 SCALE: NTS

Item Description	Make and Model	Qty
<b>Input Sources</b>		
Playback Sources		
CD/MP3/iPod	Tascam CD-200L	1
<b>Mixers/Processors</b>		
Audio Mixer	Alesis MultiMix 12R	1
Audio DSP	dbx DriveRack Venu360	1
<b>Wireless Microphone System</b>		
Wireless Microphone Receivers	Shure QLXD 124/85	2
	Shure QLXD4 Receiver	INCL.
	Shure QLXD2 Hand Held Transmitter	INCL.
	Shure QLXD1 Body Pack Transmitter	INCL.
	Shure SM58 Handheld Mic	INCL.
	Shure WL185 Lavalier Mic	INCL.
<b>Wired Mics, Stands, Accessories</b>		
Wired Microphones	Shure SM-58	4
Microphone Stands	Atlas MS-12CE	4
<b>Amplifiers/Speakers</b>		
Ceiling Speakers	JBL AWC 129	8
Power Amplifier	Crown Dci 2-600	1
<b>Microphone/Speaker Cables</b>		
Audio Cables	Whirlwind MK425	2
	Whirlwind MK450	2
	Whirlwind NL4-010	2
<b>Miscellaneous Equipment</b>		
Rear Rack Panel	RCI Custom	1
Front Rack Panel	RCI Custom	1
<b>Equipment Racks</b>		
Portable Rack	Gator Cases G-SHOCK-16L	1
Caster Base	Gator Cases GA-200	1
Rack Drawer	Middle Atlantic TD3LK	1
Power Conditioner	SurgeX SX1120RT	1
Blank Panels	Middle Atlantic Blank Panels	Lot

4 GYMNASIUM EQUIPMENT LIST  
TA501 SCALE: NTS

KEY NOTE: #  
1. CONNECTIONS BETWEEN RACK AND WALL PLATE IS PRESENT ONLY WHEN IN USE.  
2. PORTABLE RACK IS GATOR G-SHOCK-16L.

OWNER

DGS (DEPARTMENT OF GENERAL SERVICES)  
1250 U STREET, NW,  
WASHINGTON, DC 20009

ARCHITECT

LANCE BAILEY & ASSOCIATES  
7600 GEORGIA AVENUE, NW  
WASHINGTON, DC 20012  
T: (301)565-2283 F: (301)565-2287

STRUCTURAL ENGINEER

CONSULTING STRUCTURAL ENGINEER  
6239 EXECUTIVE BULEVARD  
NORTH BETHESDA, MD 20852-3906  
T: 301-616-0949 F: 301-616-0949  
www.mpgengineers.com

ELECTRICAL ENGINEER

GLOBAL ENGINEERING SOLUTION  
5225 WISCONSIN AVENUE, NW, SUITE 300  
WASHINGTON, DC 20015  
T: (202) 495-7746 F: (202) 495-7747

CIVIL ENGINEER

10 G STREET, NE, SUITE # 430  
WASHINGTON, DC 20002  
T: (202) 289-4545 F: (202) 289-5051

ACOUSTICAL AND TECHNOLOGY CONSULTANT

405 BELLE AIR LANE  
WARRENTON, VA 20186  
T: (840) 341-4988 F: (840) 341-0909

SUBMISSION SCHEDULE	DATE
50% DESIGN DEVELOPMENT	07/28/15
CONSTRUCTION DOCUMENTS	08/14/15

REVISION SCHEDULE	DATE
NO DESCRIPTION	

PROJECT:

## DYRS GYMNASIUM RENOVATION

1000 MOUNT OLIVET ROAD, NE  
WASHINGTON, DC 20002

SHEET TITLE:

## DETAILS

PROJECT NO: 1310

AUGUST 14, 2015

SCALE: AS NOTED

SHEET NO:

TA501