



# Hearst Park & Pool Project Community Meeting

Thursday, November 16, 2017

# Rules of the Road:

Welcome! Thank you for your participation.

- Please Hold all questions until the end of the presentation.
- Sign-In Before you leave.

## AGENDA:

Tonight, the meeting will be more focused on the park improvements as the funding is in place and the first phase of the project can be implemented in 2018

### Items to review:

Phase I: Park Improvements

Phase II: Park and Pool





# Design Guidelines:

(as discussed in September)

- Community Input
  - Existing Condition Surveys
  - Engineering Surveys
  - Engineering Calculations & Design Best Practices
  - DC Department of the Environment (DDOE)
  - DDOE - Low Impact Development (LID) Construction and Maintenance Guidance Manual
  - Sustainable DC
  - DC Historic Preservation Office (HPO)
  - DC Department of Consumer and Regulatory Affairs (DCRA)
  - Urban Forestry Administration (UFA) – Arborist(s) Recommendations
-

# Hearst Park & Pool Schedule



- Project Design – Present – Spring 2018
- Park Construction Start – Summer 2018 – Winter 2018
- Playground Construction – Summer 2018
- Pool and Pool House Construction Start – 2019
- Park and Pool Construction – Early 2019 to Late 2019



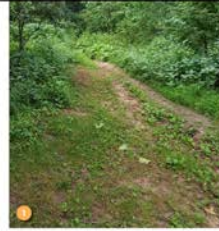


## Hearst Park Location Map

- Southern Lot: DPR (1)
- Northern Lot: DPR & DCPS (2)
- Eastern Lot: DDOT (3)



# Hearst Park: Existing Conditions





Concept I: South



Concept II: North



Concept III: East



## Hearst Overall Project: Concept Progression:

Three locations were explored for feasibility.



## Hearst Park: Phase I (2018)

### Concept Options:

- Newly graded field
- Irrigation System
- Playground Shade
- Walking Trail
- Bio-filtration area
- Plantings
- Site Furnishing
- New ADA Improvements
- Vegetation Enhancement on East & South Slopes



Existing







Natural Sod Grass



# Field Improvements:

- Regrade the site
- Engineered draining organic soils
- Install Irrigation
- Sod the playing field
- Improved Field Drainage System



Concrete Paths



Paver Paths



Boardwalks



Permeable Rubber Paths



# Walking Trail

## Recommended Paths:

- Concrete
- Boardwalks

## Optional Paths:

- Permeable Rubber
- Pavers





Raised boardwalk & western bio-retention area

## Bio-Filtration Area

- Stormwater Management
- Native Habitats
- Butterfly Garden
- Educational Signage
- Boardwalks



Northeast entrance – facing south

## Park Entrances

- Accent trees
- Directional / Informational Signage





Bio retention educational Sign





Bench



Drinking Fountain



## Site Furnishings



Grill Racks



Bicycle Racks



Path Lighting



Picnic Tables

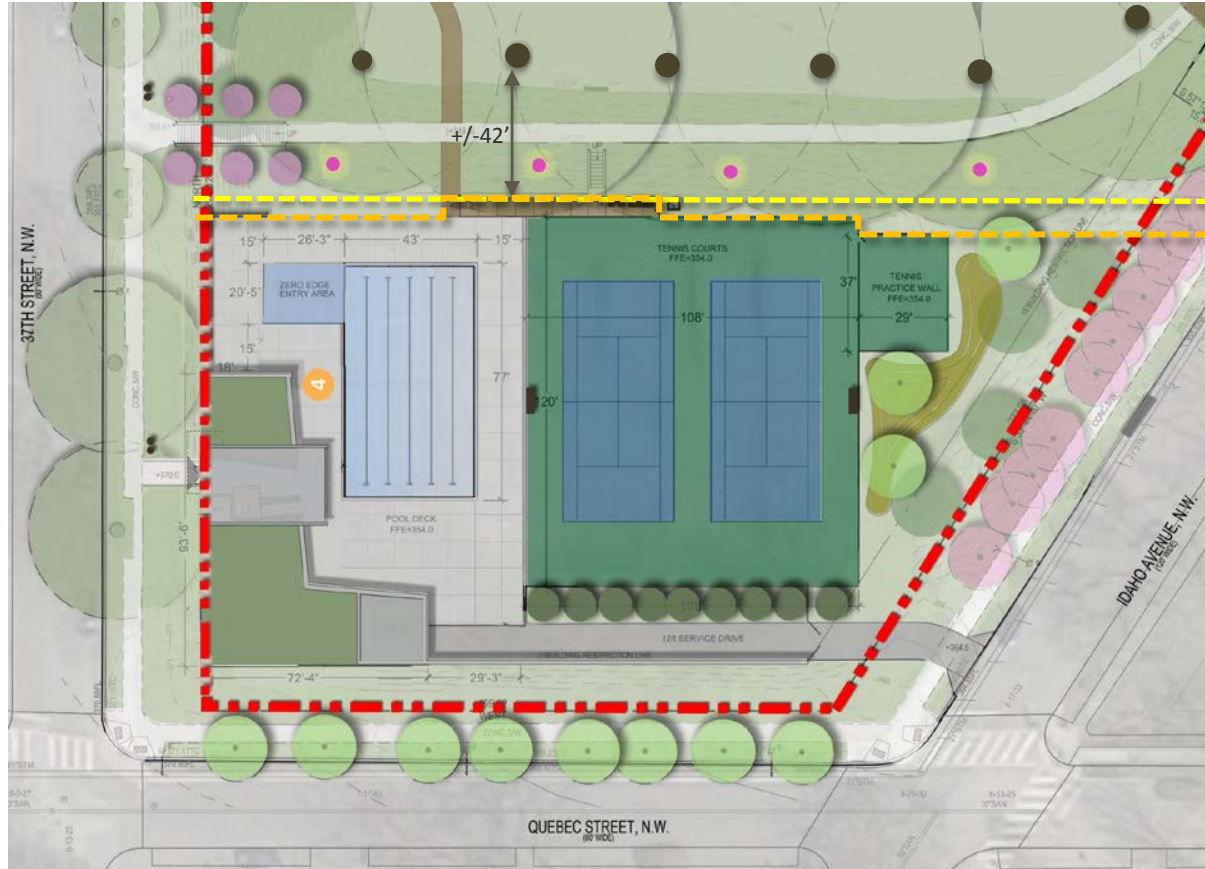


## Playground

- Improved shading
- Modify Play Areas
- Additional Site Amenities







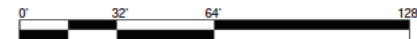
Limits of Ex.  
Tennis Courts

Limits of  
Proposed  
Construction

## Hearst Park & Pool: Phase II (2019)

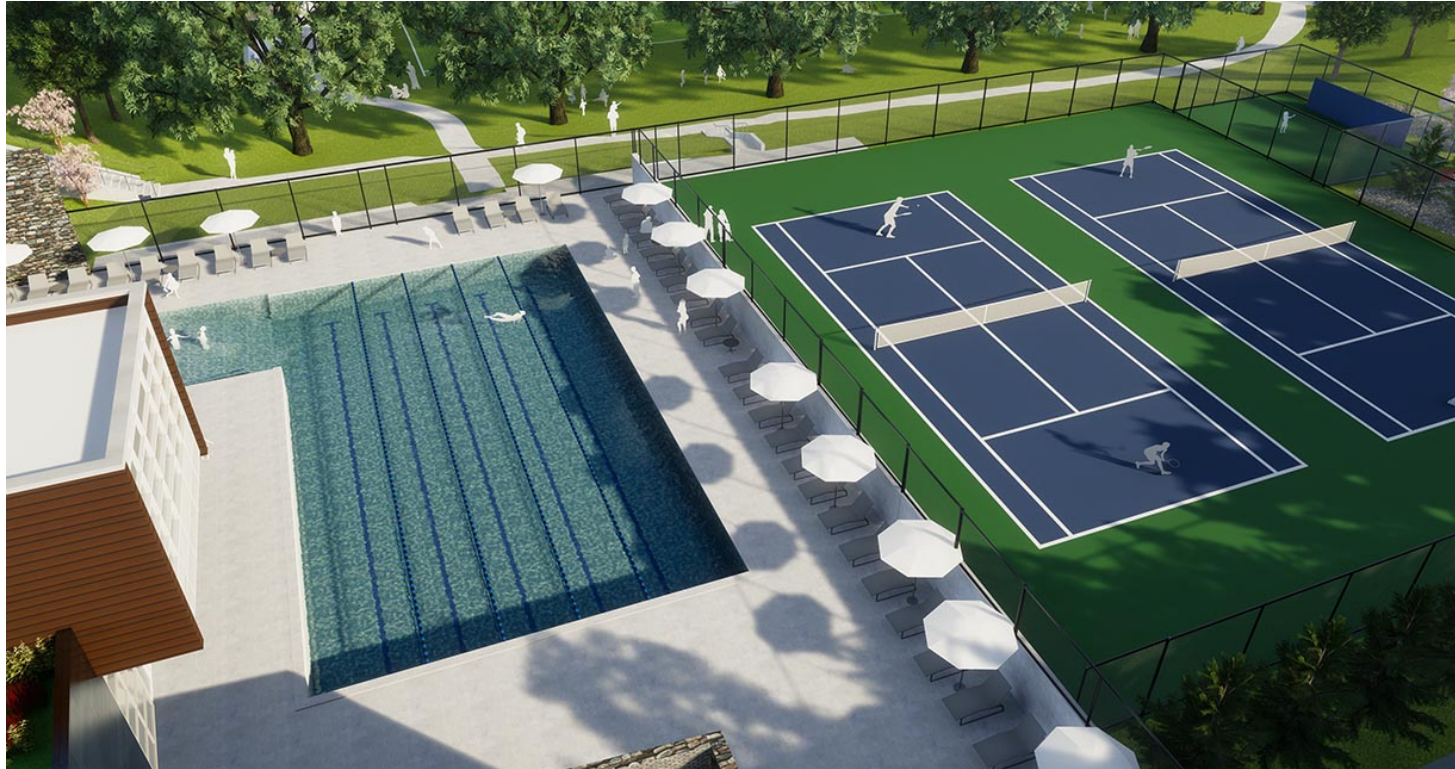
### Concept Overview:

- All work is to stay south of the existing tennis fence
- The heritage trees are a minimum of 40' away from the limit of work





# Pool & Tennis Courts



Aerial View Facing North

# Pool & Tennis Courts



Aerial View Facing North



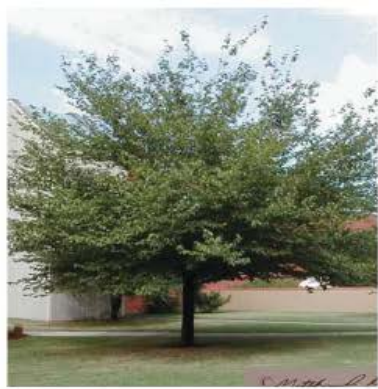
# Pool House



View facing north from corner of 37<sup>th</sup> Street and Quebec Street



## Landscaping - Trees



*Fagus grandiflora*  
American Beech  
Height: 50'  
Bloom: April-May | Yellow-Green  
Fall Interest



*Betula nigra* 'Heritage'  
River Birch  
Height: 80'  
Bloom: April-May | Brown  
Fall Interest



*Carpinus caroliniana* 'Palisade'  
American Hornbeam  
Height: 30'  
Bloom: February | White-Green  
Fall Interest



*Prunus serrulata* 'Kwanzan'  
Kwanzan Cherry Tree  
Height: 25'  
Bloom: April | Pink  
Fall Interest



*Gleditsia triacanthos*  
Honeylocust Tree  
Height: 70'  
Bloom: April-May | Yellow-Green  
Fall Interest



*Amelanchier arborea*  
Common Serviceberry  
Height: 36'  
Bloom: April-May | White-Green  
Spring Interest

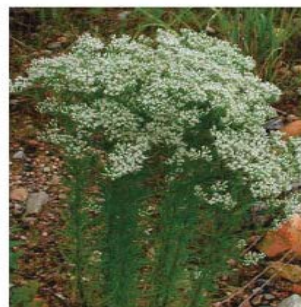




*Carex pensylvanica*  
 Pennsylvania Sedge  
 Height: 6-18"  
 Fall Interest



*Chasmanthium latifolium*  
 Sea Oats  
 Height: 2-5'  
 Bloom: July-September | Tan



*Eupatorium hyssopifolium*  
 Hyssop-leaved Thoroughwort  
 Height: 1-4'  
 Bloom: July-October | White



## Landscaping - Grasses

### FERNS



*Dryopteris cristata*  
 Crested Wood Fern  
 Height: 18-30" bioretention | Evergreen

### GROUNDCOVER / VINES



*Asarum canadense*  
 Wild Ginger  
 Height: 6"  
 Semi-evergreen



*Schizachyrium scoparium* Little  
 Bluestem  
 Height: 1-4'  
 Bloom: July-October | White



*Pennisetum alopecuroides* 'Hameln'  
 Fountain Grass  
 Height: 1.5-2.5'  
 Bloom: August-October | white

# Landscaping - Shrubs



*Viburnum dentatum*  
Arrowwood Viburnum  
Height: 10'  
Bloom: May-June | White



*Rhododendron*  
Azalea  
Height: 4-5'  
Bloom: April-June | Red, White, Pink,  
Lavender



*Euonymus fortunei* 'Emerald 'n' Gold'  
Wintercreeper Euonymus  
Height: 1.5-2'  
Bloom: June | Greenish white or yellow  
Fall Interest



*Spiraea japonica*  
Japanese Meadowsweet  
Height: 4-6'  
Bloom: June-July | Pink



# Landscaping Perennials & Bulbs



*Rudbeckia hirta*  
Black-eyed Susan  
Height: 1-3'  
Bloom: June-October | Yellow



*Solidago flexicaulis*  
Broad Leaf Or Zig Zag Goldenrod  
Height: 1-3"  
Bloom: June-October | Yellow



*Iris versicolor*  
Blue Flag  
Height: 3'  
Bloom: May-June | Blue  
Bioretention



*Echinacea purpurea*  
Purple Coneflower  
Height: 5'  
Bloom: June-August | Purplish-Pink



*Leucanthemum × superbum* 'Becky'  
Shasta Daisy  
Height: 4'  
Bloom: July-September | White  
with Yellow Center



*Perovskia atriplicifolia*  
Russian Sage  
Height: 5'  
Bloom: July-October | Lavender-Blue



*Agastache* 'Blue Fortune'  
Giant Hyssop  
Height: 2-3'  
Bloom: July-September | Blue



*Geranium macrorrhizum*  
Bigroot Cranesbill  
Height: 1'  
Bloom: April-July | Magenta



# Landscaping Perennials & Bulbs



*Mimulus ringens*  
Allegheny Monkeyflower  
Height: 1-3'  
Bloom: June-September | Purple



*Penstemon digitalis*  
'Husker Red'  
Husker Red Penstemon  
Height: 2-3'  
Bloom: April-June | Purple



*Fothergilla gardenii* 'Mount Airy'  
Dwarf Fothergilla  
Height: 1.5-3'  
Bloom: April-May | White  
Fall Interest



*Ilex glabra* 'Nigra'  
Nigra Inkberry Holly  
Height: 5-8' Bloom: April |  
White Evergreen



*Ilex verticillata*  
Winterberry Holly  
Height: 3-12'  
Bloom: June-July | Green-white  
Year Round Interest



*Kalmia angustifolia* 'Little Linda'  
Mountain Laurel  
Height: 3'  
Bloom: May-June | White-pink  
Spring Interest



*Myrica pennsylvanica*  
Northern Bayberry  
Height: 6-8'  
Bloom: May | Yellow-green  
Winter Interest



Yellow Twig Dogwood  
Red Twig Dogwood  
Height: 6'  
Bloom: May-June | White

*Cornus sericea* 'Cardinal'  
Red Twig Dogwood  
Height: 9'  
Bloom: May-June | White





# Next Steps:

- DPR/DGS will update the ANC3F on Tuesday November 21<sup>st</sup> regarding this community meeting;
- This presentation will be posted on the DGS website;
- General Contractor Procurement for Phase 1 to start Early 2018;
- The next community meeting will be to review the updated developments of the park & pool house designs.

## Contact Information

### Department of General Services (DGS)

Jackie Stanley, Community Outreach Specialist

[Jackie.Stanley@dc.gov](mailto:Jackie.Stanley@dc.gov)

### Department of Parks & Recreation (DPR)

Peter Nohrden, ASLA / Project Manager

[Peter.Nohrden@dc.gov](mailto:Peter.Nohrden@dc.gov)