

HEARST PARK AND POOL

CONSTRUCTION UPDATE: DECEMBER 2022

PROJECT OVERVIEW:

The Hearst Park & Pool includes design and construction of two brand new tennis courts with a practice wall, the renovation of the existing soccer field, a new pool and pool house, remediation of site drainage, runoff and erosion issues. The Project will also include landscaping, fencing, site furnishings, amenities, signage, and pathways.

PROJECT TIMELINE:

- Design and Outreach: May 2016
- Construction Begins: August 2019
- Phase I of Playground: Fall 2019
- Phase II of Playground: Spring 2020
- Project Completion of the Field and Park: Winter 2020/2021 and will open in Spring 2021
- Project Completion of the Pool and Poolhouse: Spring 2021
- Remediation of Groundwater: Fall/Winter 2022

WHAT HAPPENED THIS FALL:

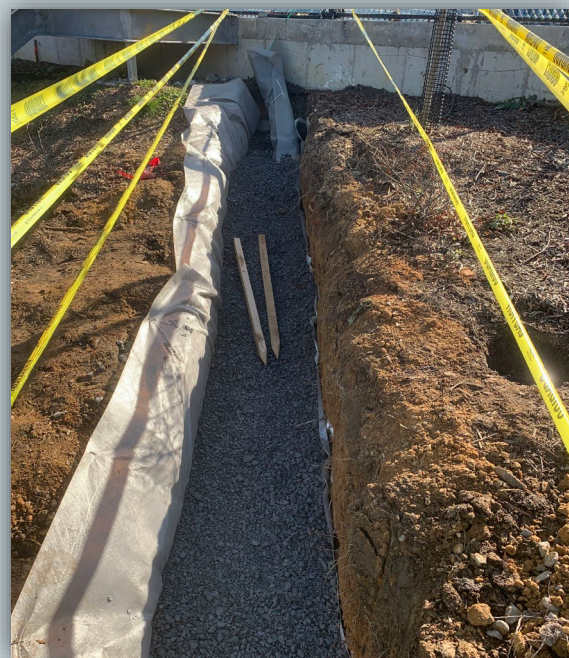
- After groundwater appeared and inundated the southwestern-most heritage oak, it had to be removed as it was dying and becoming a safety hazard.
- A plan was then developed to interrupt this groundwater as it appeared to be coming from the hill below 37th and behind the new pool retaining wall from higher elevations to lower elevations.
- The plan is to interrupt, absorb and redirect this groundwater which appeared higher than the field with a French Drain.
- In October, this plan was shared with the community at an ANC meeting, via email and on the project website.

WHAT TO EXPECT IN THE COMING WEEKS:

- A contractor (Dennison Landscaping, Inc.) will excavate a trench outside the Critical Root Zone (CRZ) of the surviving heritage oak.
- The trench will be lined with filter fabric and the base will be layered with gravel with a positive downhill slope.
- Perforated drainpipes will be installed in the trench
- The drainpipes will be wrapped in a sleeve and covered by additional gravel
- The trench will be covered with filter fabric, topsoil and mulch
- The perforated drainpipes will be connected to solid pipes and connected to the existing storm-sewer system onsite.
- Two swales will be installed and a new surface drain to assist the surface water that has been standing in the CRZ's south of the field after rain events.



Trench has been dug for French drain.



The base of the trench lined with filter fabric.

FOR ADDITIONAL INFORMATION:

VISIT: dgs.dc.gov/node/1135096



HEARST PARK AND POOL

ADDITIONAL SITE PHOTOS



Groundwater visible and flowing in the trench from the higher elevations at southwest to the field to the north.



Water backed-up in the incomplete trench higher than the field as it flows down from the hill to the south to the field to the north.



Bioretention Area lower than the field is dry



Areas within the Critical Root Zone of the heritage trees where the surface swales will be installed are dry after over 2" of rain last week.

FOR ADDITIONAL INFORMATION:
VISIT: dgs.dc.gov/node/1135096

