

P.W

DDOT/PUBLIC SPACE PERMIT OFFICE/WZPS

APPROVED with conditions

Date: 7/9/19 Contact: O. Obadare

SEE RESTRICTIONS TOPS comments and recommendations

#10740698



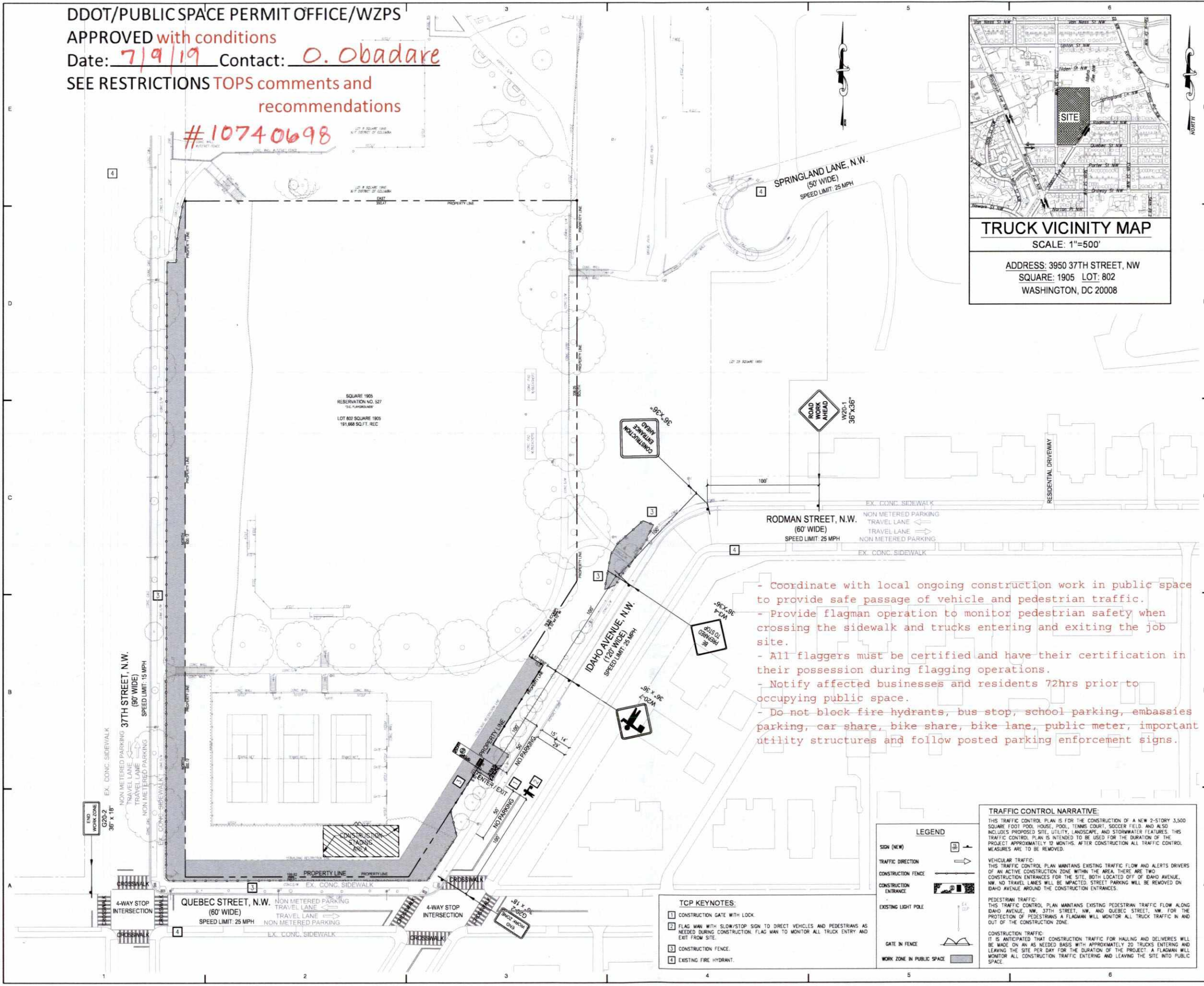
Consultants
9 JUL '19 PM 5:46



TRUCK VICINITY MAP

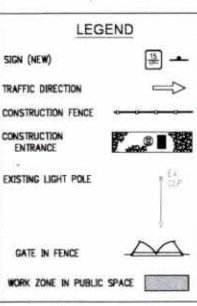
SCALE: 1"=500'

ADDRESS: 3950 37TH STREET, NW
SQUARE: 1905 LOT: 802
WASHINGTON, DC 20008



- Coordinate with local ongoing construction work in public space to provide safe passage of vehicle and pedestrian traffic.
- Provide flagman operation to monitor pedestrian safety when crossing the sidewalk and trucks entering and exiting the job site.
- All flaggers must be certified and have their certification in their possession during flagging operations.
- Notify affected businesses and residents 72hrs prior to occupying public space.
- Do not block fire hydrants, bus stop, school parking, embassies parking, car share, bike share, bike lane, public meter, important utility structures and follow posted parking enforcement signs.

- TCP KEYNOTES:
- 1 CONSTRUCTION GATE WITH LOCK.
 - 2 FLAG MAN WITH SLOW/STOP SIGN TO DIRECT VEHICLES AND PEDESTRIANS AS NEEDED DURING CONSTRUCTION. FLAG MAN TO MONITOR ALL TRUCK ENTRY AND EXIT FROM SITE.
 - 3 CONSTRUCTION FENCE.
 - 4 EXISTING FIRE HYDRANT.

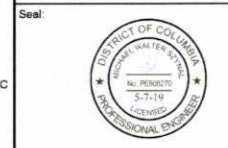


TRAFFIC CONTROL NARRATIVE:
THIS TRAFFIC CONTROL PLAN IS FOR THE CONSTRUCTION OF A NEW 2-STORY 3,300 SQUARE FOOT POOL HOUSE, POOL, TENNIS COURT, SOCCER FIELD, AND ALSO INCLUDES PROPOSED SITE, UTILITY, LANDSCAPE, AND STORMWATER FEATURES. THIS TRAFFIC CONTROL PLAN IS INTENDED TO BE USED FOR THE DURATION OF THE PROJECT APPROXIMATELY 12 MONTHS. AFTER CONSTRUCTION ALL TRAFFIC CONTROL MEASURES ARE TO BE REMOVED.

VEHICULAR TRAFFIC:
THIS TRAFFIC CONTROL PLAN MAINTAINS EXISTING TRAFFIC FLOW AND ALERTS DRIVERS OF AN ACTIVE CONSTRUCTION ZONE WITHIN THE AREA. THERE ARE TWO CONSTRUCTION ENTRANCES FOR THE SITE, BOTH LOCATED OFF OF IDAHO AVENUE, NW. NO TRAVEL LANES WILL BE IMPACTED. STREET PARKING WILL BE REMOVED ON IDAHO AVENUE AROUND THE CONSTRUCTION ENTRANCES.

PEDESTRIAN TRAFFIC:
THIS TRAFFIC CONTROL PLAN MAINTAINS EXISTING PEDESTRIAN TRAFFIC FLOW ALONG IDAHO AVENUE, NW, 37TH STREET, NW, AND QUEBEC STREET, NW. FOR THE PROTECTION OF PEDESTRIANS A FLAGMAN WILL MONITOR ALL TRUCK TRAFFIC IN AND OUT OF THE CONSTRUCTION ZONE.

CONSTRUCTION TRAFFIC:
IT IS ANTICIPATED THAT CONSTRUCTION TRAFFIC FOR HAULING AND DELIVERIES WILL BE MADE ON AN AS NEEDED BASIS WITH APPROXIMATELY 20 TRUCKS ENTERING AND LEAVING THE SITE PER DAY FOR THE DURATION OF THE PROJECT. A FLAGMAN WILL MONITOR ALL CONSTRUCTION TRAFFIC ENTERING AND LEAVING THE SITE INTO PUBLIC SPACE.



Client: DEPARTMENT OF GENERAL SERVICES

Project: HEARST PARK & POOL TRAFFIC CONTROL PLAN

No.	Date	Issue/Revision
Designed By: MS	Drawn By: DR	Checked By: MS
Project No.: 16-030	Date: 03/20/2018	

Sheet Title: Traffic Control Plan
Sheet No.: TCP0100