

# Hearst Park & Pool Project

## ANC 3F Update

Tuesday, March 19, 2019



# AGENDA:

1. DGS, DPR, CGS Team Introduction
2. Progress Since Last Meeting
3. Project Overview
4. Grading Plans
5. Trails, Bio-Filtration, Signage, Site Furnishings
6. Playground
7. Pool Layout and Street Renderings
8. Landscape Plans and Images
9. Next Steps
10. Contact Information



# Progress Since Last Community Meeting:

- Stormwater Management Remediation Permitting still in review
- General Contractor Awarded and working on project schedule, budget and permits
- DC Water Approval still in progress, Signage, Site Furnishings,
- (Excavation (BCIV) permit under review by DOEE
- Foundation to Grade permit under review by DCRA, DDOT & DOEE waiting for final comments by
- Planning to submit for Building Permit review within a week.





# Hearst Park & Pool

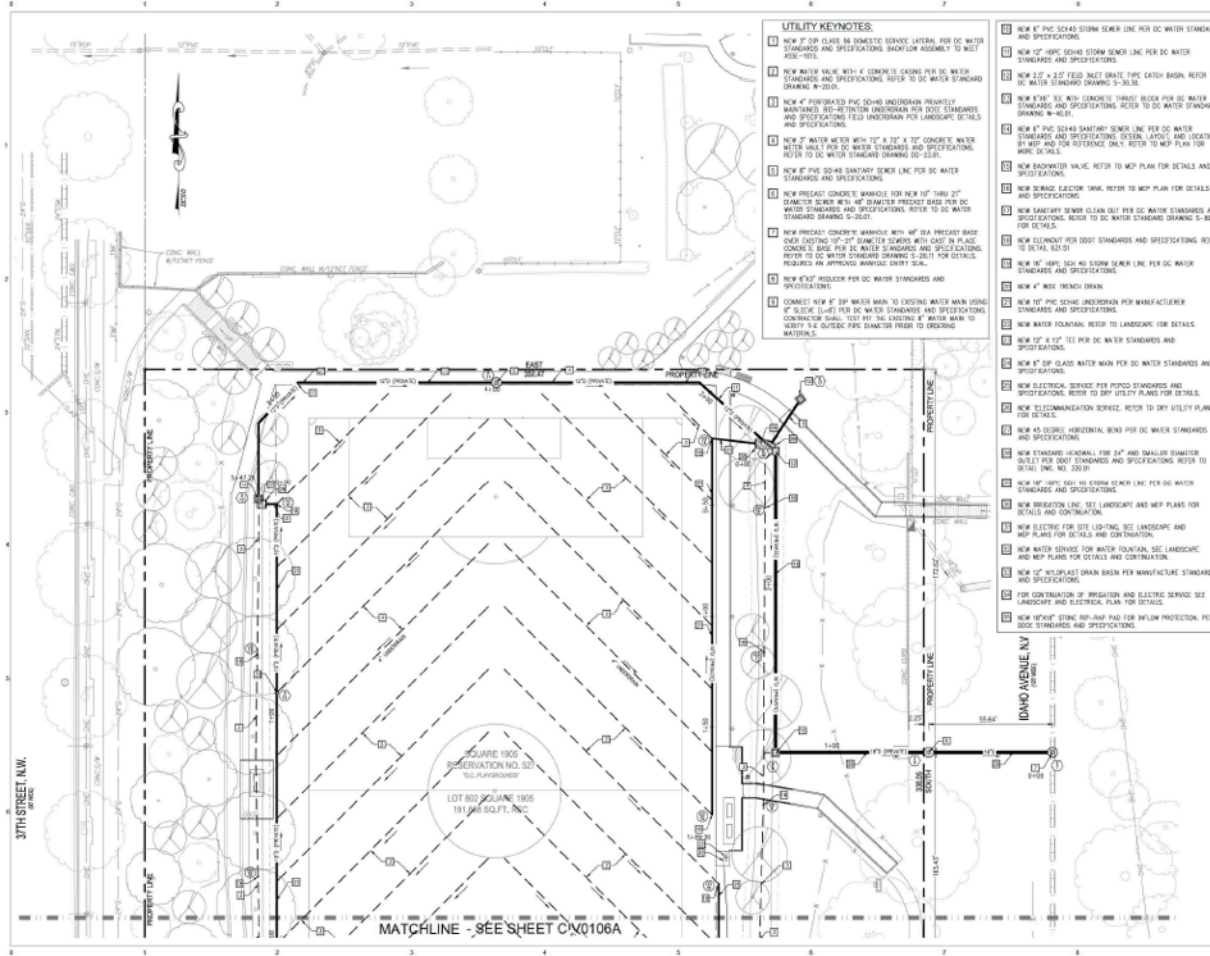
## Overall Design

- Newly graded field
- Irrigation System
- Playground Shade
- Playground Structure
- Walking Trail
- Bio-filtration areas
- Trees and Plantings
- Site Furnishing
- New ADA Improvements
- Vegetation Enhancement on East & South Slopes
- New Outdoor Pool & Pool House
- New tennis courts





# Grading Plan – Northern Field



## UTILITY KEYNOTES:

1. NEW 8" DIP GLASS 180 DOMESTIC SERVICE LATERAL FOR DC WATER STANDARDS AND SPECIFICATIONS. BACKLOG ASSEMBLY TO WEST SIDE-1015.
2. NEW WATER VALVE WITH 4" CONCRETE CASING PER DC WATER STANDARDS AND SPECIFICATIONS. REFER TO DC WATER STANDARD DRAWING N-2019.
3. NEW 4" PERFORATED PVC 5040 UNDERDRAIN PRIMARILY MAINTAINED 100-100 UNDERDRAIN PER DC WATER STANDARDS AND SPECIFICATIONS. REFER TO DC WATER STANDARD DRAWING N-2019.
4. NEW 8" WATER METER WITH 12" X 12" X 12" CONCRETE WATER METER VALVE PER DC WATER STANDARDS AND SPECIFICATIONS. REFER TO DC WATER STANDARD DRAWING N-2019.
5. NEW 8" PVC 5040 SANITARY SINK LINE FOR DC WATER STANDARDS AND SPECIFICATIONS.
6. NEW PRECAST CONCRETE MANHOLE FOR NEW 10" 1000 20" DIAMETER SINK WITH 16" DIAMETER PRECAST BASE FOR DC WATER STANDARDS AND SPECIFICATIONS. REFER TO DC WATER STANDARD DRAWING S-2021.
7. NEW PRECAST CONCRETE MANHOLE WITH 16" DIA PRECAST BASE (ON EXISTING 16" DIA SINK) CAST IN PLACE. CONCRETE SINK FOR DC WATER STANDARDS AND SPECIFICATIONS. REFER TO DC WATER STANDARD DRAWING S-2021 FOR DETAILS. REQUIRES AN APPROVED MANHOLE ENTRY SEAL.
8. NEW 8" 10" 1000 20" FOR DC WATER STANDARDS AND SPECIFICATIONS.
9. CONNECT NEW 8" DIP WATER MAIN TO EXISTING WATER MAIN USING 8" GLUE (LWT) PER DC WATER STANDARDS AND SPECIFICATIONS. CONCRETE SINK, 100' TO 10' EXISTING 8" WATER MAIN TO VERIFY 8" OUTSIDE PVC DIAMETER PRIOR TO ORDERING MATERIALS.
10. NEW 8" PVC 5040 SINK LINE FOR DC WATER STANDARDS AND SPECIFICATIONS.
11. NEW 12" 1000 20" 5040 SINK LINE FOR DC WATER STANDARDS AND SPECIFICATIONS.
12. NEW 2.5" 2.5" FIELD DRAIN TYPE CATCH BASIN. REFER TO DC WATER STANDARD DRAWING S-3030.
13. NEW 12" 1000 20" 5040 SINK LINE FOR DC WATER STANDARDS AND SPECIFICATIONS. REFER TO DC WATER STANDARD DRAWING N-2019.
14. NEW 8" PVC 5040 SANITARY SINK LINE FOR DC WATER STANDARDS AND SPECIFICATIONS. DETAIL, LAYOUT, AND LOCATION. REFER TO MOP PLAN FOR DETAILS AND SPECIFICATIONS.
15. NEW BACKWATER VALVE. REFER TO MOP PLAN FOR DETAILS AND SPECIFICATIONS.
16. NEW DOMESTIC GLASSION TANK. REFER TO MOP PLAN FOR DETAILS AND SPECIFICATIONS.
17. NEW SANITARY SINK CLEAN OUT PER DC WATER STANDARDS AND SPECIFICATIONS. REFER TO DC WATER STANDARD DRAWING S-3030 FOR DETAILS.
18. NEW 10" 1000 20" 5040 SINK LINE FOR DC WATER STANDARDS AND SPECIFICATIONS.
19. NEW 8" 1000 20" 5040 SINK LINE FOR DC WATER STANDARDS AND SPECIFICATIONS.
20. NEW 8" 1000 20" 5040 SINK LINE FOR DC WATER STANDARDS AND SPECIFICATIONS.
21. NEW 10" 1000 20" 5040 SINK LINE FOR DC WATER STANDARDS AND SPECIFICATIONS.
22. NEW WATER FOUNTAIN. REFER TO LANDSCAPE FOR DETAILS.
23. NEW 12" X 12" 1000 20" 5040 SINK LINE FOR DC WATER STANDARDS AND SPECIFICATIONS.
24. NEW 8" DIP GLASS 180 DOMESTIC SERVICE LATERAL FOR DC WATER STANDARDS AND SPECIFICATIONS.
25. NEW ELECTRICAL SERVICE PER PFDOS STANDARDS AND SPECIFICATIONS. REFER TO DIP UTILITY PLANS FOR DETAILS.
26. NEW TELECOMMUNICATION SERVICE. REFER TO DIP UTILITY PLANS FOR DETAILS.
27. NEW 4" 1000 20" 5040 SINK LINE FOR DC WATER STANDARDS AND SPECIFICATIONS.
28. NEW STANDARD MANHOLE FOR 24" AND SMALLER DIAMETER SINKS PER DC WATER STANDARDS AND SPECIFICATIONS. REFER TO DETAIL C10106A FOR DETAILS.
29. NEW 10" 1000 20" 5040 SINK LINE FOR DC WATER STANDARDS AND SPECIFICATIONS.
30. NEW 10" 1000 20" 5040 SINK LINE FOR DC WATER STANDARDS AND SPECIFICATIONS.
31. NEW 10" 1000 20" 5040 SINK LINE FOR DC WATER STANDARDS AND SPECIFICATIONS.
32. NEW 10" 1000 20" 5040 SINK LINE FOR DC WATER STANDARDS AND SPECIFICATIONS.
33. NEW 10" 1000 20" 5040 SINK LINE FOR DC WATER STANDARDS AND SPECIFICATIONS.
34. NEW 10" 1000 20" 5040 SINK LINE FOR DC WATER STANDARDS AND SPECIFICATIONS.
35. NEW 10" 1000 20" 5040 SINK LINE FOR DC WATER STANDARDS AND SPECIFICATIONS.
36. NEW 10" 1000 20" 5040 SINK LINE FOR DC WATER STANDARDS AND SPECIFICATIONS.
37. NEW 10" 1000 20" 5040 SINK LINE FOR DC WATER STANDARDS AND SPECIFICATIONS.
38. NEW 10" 1000 20" 5040 SINK LINE FOR DC WATER STANDARDS AND SPECIFICATIONS.
39. NEW 10" 1000 20" 5040 SINK LINE FOR DC WATER STANDARDS AND SPECIFICATIONS.
40. NEW 10" 1000 20" 5040 SINK LINE FOR DC WATER STANDARDS AND SPECIFICATIONS.
41. NEW 10" 1000 20" 5040 SINK LINE FOR DC WATER STANDARDS AND SPECIFICATIONS.
42. NEW 10" 1000 20" 5040 SINK LINE FOR DC WATER STANDARDS AND SPECIFICATIONS.
43. NEW 10" 1000 20" 5040 SINK LINE FOR DC WATER STANDARDS AND SPECIFICATIONS.
44. NEW 10" 1000 20" 5040 SINK LINE FOR DC WATER STANDARDS AND SPECIFICATIONS.
45. NEW 10" 1000 20" 5040 SINK LINE FOR DC WATER STANDARDS AND SPECIFICATIONS.
46. NEW 10" 1000 20" 5040 SINK LINE FOR DC WATER STANDARDS AND SPECIFICATIONS.
47. NEW 10" 1000 20" 5040 SINK LINE FOR DC WATER STANDARDS AND SPECIFICATIONS.
48. NEW 10" 1000 20" 5040 SINK LINE FOR DC WATER STANDARDS AND SPECIFICATIONS.
49. NEW 10" 1000 20" 5040 SINK LINE FOR DC WATER STANDARDS AND SPECIFICATIONS.
50. NEW 10" 1000 20" 5040 SINK LINE FOR DC WATER STANDARDS AND SPECIFICATIONS.
51. NEW 10" 1000 20" 5040 SINK LINE FOR DC WATER STANDARDS AND SPECIFICATIONS.
52. NEW 10" 1000 20" 5040 SINK LINE FOR DC WATER STANDARDS AND SPECIFICATIONS.
53. NEW 10" 1000 20" 5040 SINK LINE FOR DC WATER STANDARDS AND SPECIFICATIONS.
54. NEW 10" 1000 20" 5040 SINK LINE FOR DC WATER STANDARDS AND SPECIFICATIONS.
55. NEW 10" 1000 20" 5040 SINK LINE FOR DC WATER STANDARDS AND SPECIFICATIONS.
56. NEW 10" 1000 20" 5040 SINK LINE FOR DC WATER STANDARDS AND SPECIFICATIONS.
57. NEW 10" 1000 20" 5040 SINK LINE FOR DC WATER STANDARDS AND SPECIFICATIONS.
58. NEW 10" 1000 20" 5040 SINK LINE FOR DC WATER STANDARDS AND SPECIFICATIONS.
59. NEW 10" 1000 20" 5040 SINK LINE FOR DC WATER STANDARDS AND SPECIFICATIONS.
60. NEW 10" 1000 20" 5040 SINK LINE FOR DC WATER STANDARDS AND SPECIFICATIONS.
61. NEW 10" 1000 20" 5040 SINK LINE FOR DC WATER STANDARDS AND SPECIFICATIONS.
62. NEW 10" 1000 20" 5040 SINK LINE FOR DC WATER STANDARDS AND SPECIFICATIONS.
63. NEW 10" 1000 20" 5040 SINK LINE FOR DC WATER STANDARDS AND SPECIFICATIONS.
64. NEW 10" 1000 20" 5040 SINK LINE FOR DC WATER STANDARDS AND SPECIFICATIONS.
65. NEW 10" 1000 20" 5040 SINK LINE FOR DC WATER STANDARDS AND SPECIFICATIONS.
66. NEW 10" 1000 20" 5040 SINK LINE FOR DC WATER STANDARDS AND SPECIFICATIONS.
67. NEW 10" 1000 20" 5040 SINK LINE FOR DC WATER STANDARDS AND SPECIFICATIONS.
68. NEW 10" 1000 20" 5040 SINK LINE FOR DC WATER STANDARDS AND SPECIFICATIONS.
69. NEW 10" 1000 20" 5040 SINK LINE FOR DC WATER STANDARDS AND SPECIFICATIONS.
70. NEW 10" 1000 20" 5040 SINK LINE FOR DC WATER STANDARDS AND SPECIFICATIONS.
71. NEW 10" 1000 20" 5040 SINK LINE FOR DC WATER STANDARDS AND SPECIFICATIONS.
72. NEW 10" 1000 20" 5040 SINK LINE FOR DC WATER STANDARDS AND SPECIFICATIONS.
73. NEW 10" 1000 20" 5040 SINK LINE FOR DC WATER STANDARDS AND SPECIFICATIONS.
74. NEW 10" 1000 20" 5040 SINK LINE FOR DC WATER STANDARDS AND SPECIFICATIONS.
75. NEW 10" 1000 20" 5040 SINK LINE FOR DC WATER STANDARDS AND SPECIFICATIONS.
76. NEW 10" 1000 20" 5040 SINK LINE FOR DC WATER STANDARDS AND SPECIFICATIONS.
77. NEW 10" 1000 20" 5040 SINK LINE FOR DC WATER STANDARDS AND SPECIFICATIONS.
78. NEW 10" 1000 20" 5040 SINK LINE FOR DC WATER STANDARDS AND SPECIFICATIONS.
79. NEW 10" 1000 20" 5040 SINK LINE FOR DC WATER STANDARDS AND SPECIFICATIONS.
80. NEW 10" 1000 20" 5040 SINK LINE FOR DC WATER STANDARDS AND SPECIFICATIONS.
81. NEW 10" 1000 20" 5040 SINK LINE FOR DC WATER STANDARDS AND SPECIFICATIONS.
82. NEW 10" 1000 20" 5040 SINK LINE FOR DC WATER STANDARDS AND SPECIFICATIONS.
83. NEW 10" 1000 20" 5040 SINK LINE FOR DC WATER STANDARDS AND SPECIFICATIONS.
84. NEW 10" 1000 20" 5040 SINK LINE FOR DC WATER STANDARDS AND SPECIFICATIONS.
85. NEW 10" 1000 20" 5040 SINK LINE FOR DC WATER STANDARDS AND SPECIFICATIONS.
86. NEW 10" 1000 20" 5040 SINK LINE FOR DC WATER STANDARDS AND SPECIFICATIONS.
87. NEW 10" 1000 20" 5040 SINK LINE FOR DC WATER STANDARDS AND SPECIFICATIONS.
88. NEW 10" 1000 20" 5040 SINK LINE FOR DC WATER STANDARDS AND SPECIFICATIONS.
89. NEW 10" 1000 20" 5040 SINK LINE FOR DC WATER STANDARDS AND SPECIFICATIONS.
90. NEW 10" 1000 20" 5040 SINK LINE FOR DC WATER STANDARDS AND SPECIFICATIONS.
91. NEW 10" 1000 20" 5040 SINK LINE FOR DC WATER STANDARDS AND SPECIFICATIONS.
92. NEW 10" 1000 20" 5040 SINK LINE FOR DC WATER STANDARDS AND SPECIFICATIONS.
93. NEW 10" 1000 20" 5040 SINK LINE FOR DC WATER STANDARDS AND SPECIFICATIONS.
94. NEW 10" 1000 20" 5040 SINK LINE FOR DC WATER STANDARDS AND SPECIFICATIONS.
95. NEW 10" 1000 20" 5040 SINK LINE FOR DC WATER STANDARDS AND SPECIFICATIONS.
96. NEW 10" 1000 20" 5040 SINK LINE FOR DC WATER STANDARDS AND SPECIFICATIONS.
97. NEW 10" 1000 20" 5040 SINK LINE FOR DC WATER STANDARDS AND SPECIFICATIONS.
98. NEW 10" 1000 20" 5040 SINK LINE FOR DC WATER STANDARDS AND SPECIFICATIONS.
99. NEW 10" 1000 20" 5040 SINK LINE FOR DC WATER STANDARDS AND SPECIFICATIONS.
100. NEW 10" 1000 20" 5040 SINK LINE FOR DC WATER STANDARDS AND SPECIFICATIONS.

**PROJECT**  
Hearst Park & Pool  
2000 37th Street N.W.  
Washington, DC 20009

**OWNER'S REPRESENTATIVE**  
Department of General Services  
2000 14th Street N.W., 8th Floor  
Washington, DC 20009

**ARCHITECT**  
C&G Green & Associates  
2000 14th Street N.W.  
Washington, DC 20009  
T: 202.462.7000  
F: 202.462.7146

**CIVIL ENGINEER**  
Wiles Henshaw Corporation  
Address: 210 20th Street N.W.  
Washington, DC 20001  
T: 202.462.4600

**STRUCTURAL ENGINEER**  
Benson Cummings & Henshaw Inc.  
1020 Ely Street N.W., Suite 200  
Washington, DC 20009  
T: 202.239.6199

**MPE ENGINEER**  
Sentry & Associates International, PLLC  
Address: 5185 MacArthur Blvd., Suite 220  
Washington, DC 20015  
T: 202.265.1823

**LANDSCAPE ARCHITECT**  
C&G  
1020 Connecticut Avenue N.W., Suite 1000  
Washington, DC 20036  
T: 202.457.9739

**POOL CONSULTANT**  
Cousins-Henrich-Henshaw  
10700 Sunset Office Co., Suite 400  
SE. Linn, WA 98127  
T: 206.894.1345

**AVIATION/ACOUSTICS CONSULTANT**  
Polysonics  
400 14th Street N.W.  
Washington, DC 20009  
T: 202.462.4600

**MARK** Date Description

01	6/1/19	Design Development Set
02	11/15/19	37th Permit Submittal
03	02/06/19	Permit Submission

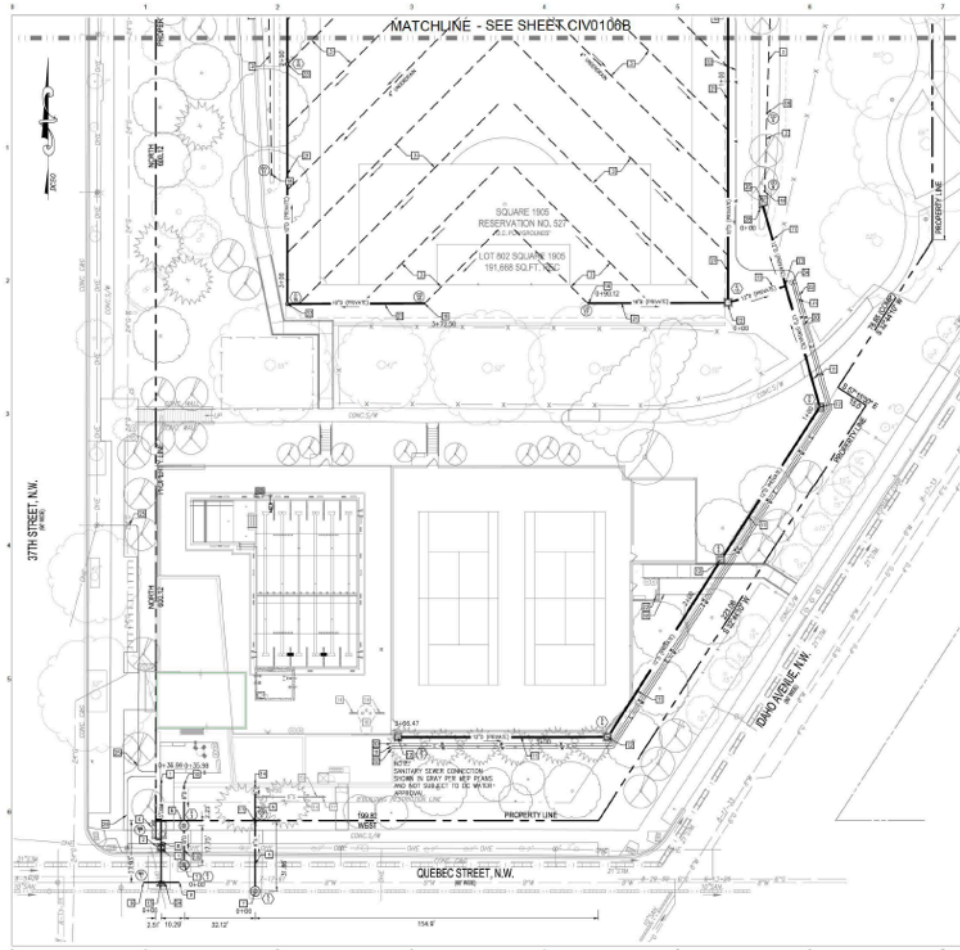
Drawing Title:  
Utility Plan

Graphic Scale:  
0' 10' 20' 30'

**DGS**  
THE DEPARTMENT OF GENERAL SERVICES

**DPR**  
DC DEPARTMENT OF PARKS AND RECREATION

**WE ARE WASHINGTON DC**



# UTILITY KEYNOTES:

1. NEW 8" DP GLASS REINFORCED CONCRETE LID FOR DC WATER STANDARDS AND SPECIFICATIONS. BACKFILL AROUND 15' MIN. 150#-100.
2. NEW WATER VALVE WITH 4" CONCRETE CATCH FOR DC WATER STANDARDS AND SPECIFICATIONS. REFER TO DC WATER STANDARD DRAWING W-35.01.
3. NEW 4" PRECAST PVC 20-40 UNDERPAVEMENT PRIVATELY MANUFACTURED, 800-REINFORCED UNDERPAVEMENT FOR DC WATER STANDARDS AND SPECIFICATIONS. REFER TO DC WATER STANDARD DRAWING W-35.01.
4. NEW 8" DP SANITARY SEWER SINK LINE FOR DC WATER STANDARDS AND SPECIFICATIONS. REFER TO DC WATER STANDARD DRAWING S-30.01.
5. NEW PRECAST CONCRETE MANHOLE FOR NEW 10" THRU 24" DIAMETER SINK WITH 48" DIA PRECAST BASE FOR DC WATER STANDARDS AND SPECIFICATIONS. REFER TO DC WATER STANDARD DRAWING S-30.01.
6. NEW PRECAST CONCRETE MANHOLE WITH 48" DIA PRECAST BASE. OVER EXISTING 10" THRU 24" DIAMETER SINK WITH CAST IN PLACE CONCRETE BASE FOR DC WATER STANDARDS AND SPECIFICATIONS. REFER TO DC WATER STANDARD DRAWING S-30.01 FOR DETAILS. REQUIRES AN APPROVED MANHOLE ENTRY SEAL.
7. NEW 10" TYP. 20-40 FOR DC WATER STANDARDS AND SPECIFICATIONS.
8. CONNECT NEW 8" DP WATER MAIN TO EXISTING WATER MAIN USING 8" BEND 8-48" FOR DC WATER STANDARDS AND SPECIFICATIONS. CONTRACTOR SHALL TEST 8" TIE EXISTING 8" WATER MAIN TO NEW 8" TIE. TYP. 20-40 PRIOR TO DRESSING MANHOLE.
9. NEW 8" PVC 20-40 STORM SINK LINE FOR DC WATER STANDARDS AND SPECIFICATIONS.
10. NEW 10" TYP. 20-40 STORM SINK LINE FOR DC WATER STANDARDS AND SPECIFICATIONS.
11. NEW 24" x 3.5' FIELD INLET GRATE PVC CATCH BASIN. REFER TO DC WATER STANDARD DRAWING S-30.01.
12. NEW 10" TYP. 20-40 WITH CONCRETE THURSTER BLOCK FOR DC WATER STANDARDS AND SPECIFICATIONS. REFER TO DC WATER STANDARD DRAWING W-40.01.
13. NEW 8" PVC 20-40 SANITARY SINK LINE FOR DC WATER STANDARDS AND SPECIFICATIONS. LOCATION, LAYOUT, AND LOCATION BY MAP AND FOR REFERENCE ONLY. REFER TO MAP PLAN FOR MORE DETAILS.
14. NEW BROWNIER VALVE. REFER TO MAP PLAN FOR DETAILS AND SPECIFICATIONS.
15. NEW STORM SEWER TANK. REFER TO MAP PLAN FOR DETAILS AND SPECIFICATIONS.
16. NEW SANITARY SEWER CLEAN OUT FOR DC WATER STANDARDS AND SPECIFICATIONS. REFER TO DC WATER STANDARD DRAWING S-30.01 FOR DETAILS.
17. NEW CLEANOUT FOR 30" STANDARDS AND SPECIFICATIONS. REFER TO DETAIL K2-31.
18. NEW 10" TYP. 20-40 STORM SINK LINE FOR DC WATER STANDARDS AND SPECIFICATIONS.
19. NEW 4" BEND FRIEND DRAIN.
20. NEW 10" PVC 20-40 UNDERPAVEMENT PRIVATELY MANUFACTURED, 800-REINFORCED UNDERPAVEMENT FOR DC WATER STANDARDS AND SPECIFICATIONS.
21. NEW WATER FOUNTAIN. REFER TO LANDSCAPE FOR DETAILS.
22. NEW 10" x 10" TIE FOR DC WATER STANDARDS AND SPECIFICATIONS.
23. NEW 8" DP GLASS REINFORCED CONCRETE LID FOR DC WATER STANDARDS AND SPECIFICATIONS.
24. NEW ELECTRICAL SERVICE. REFER TO DRY UTILITY PLANS FOR DETAILS.
25. NEW TELECOMMUNICATION SERVICE. REFER TO DRY UTILITY PLANS FOR DETAILS.
26. NEW 45 DEGREE HORIZONTAL BEND FOR DC WATER STANDARDS AND SPECIFICATIONS.
27. NEW STANDARD HORIZONTAL 180° AND SMALLER DIAMETER OUTLET FOR 30" STANDARDS AND SPECIFICATIONS. REFER TO DETAIL K2-31.
28. NEW 10" TYP. 20-40 STORM SINK LINE FOR DC WATER STANDARDS AND SPECIFICATIONS.
29. NEW BRIGGION LINE. SEE LANDSCAPE AND MEP PLANS FOR DETAILS AND CONTINUATION.
30. NEW ELECTRICAL FOR SITE LIGHTING. SEE LANDSCAPE AND MEP PLANS FOR DETAILS AND CONTINUATION.
31. NEW WATER SERVICES FOR WATER FOUNTAIN. SEE LANDSCAPE AND MEP PLANS FOR DETAILS AND CONTINUATION.
32. NEW 10" TYP. 20-40 STORM SINK LINE FOR DC WATER STANDARDS AND SPECIFICATIONS.
33. FOR CONTINUATION OF IRRIGATION AND ELECTRICAL SERVICE. SEE LANDSCAPE AND ELECTRICAL PLAN FOR DETAILS.
34. NEW 10" TYP. 20-40 STORM SINK LINE FOR DC WATER STANDARDS AND SPECIFICATIONS.

**PROJECT**  
**Heard Park & Pool**  
 2402 27th Street, NW  
 Washington, DC 20008

**OWNER'S REPRESENTATIVE**  
**Department of General Services**  
 2000 14th Street, NW, 8th Floor  
 Washington, DC 20005

**ARCHITECT**  
**cos + space architects**  
 2000 14th Street, NW, 8th Floor  
 Washington, DC 20005  
 T: 202.336.1029  
 F: 202.336.1044

**CIVIL ENGINEER**  
**Wiles Menach Corporation**  
 Address: 11000 11th Street, NW  
 Washington, DC 20005  
 T: 202.468.0304

**STRUCTURAL ENGINEER**  
**Simpson Gumpertz & Heger Inc.**  
 1025 Eye Street, NW, Suite 100  
 Washington, DC 20005  
 T: 202.336.4100

**MPE ENGINEER**  
**Berry & Associates International, PLLC**  
 Address: 5185 MacArthur Blvd., Suite 220  
 Washington, DC 20005  
 T: 202.355.1833

**LANDSCAPE ARCHITECT**  
**COLA**  
 1025 Connecticut Avenue, NW, Suite 1000  
 Washington, DC 20005  
 T: 202.857.9723

**POOL CONSULTANT**  
**Cousins-Henrich**  
 10710 Sunset Blvd., Suite 400  
 Los Angeles, CA 90027  
 T: 310.894.1245

**AVI/IT/ACQUISITION CONSULTANT**  
**Polysyncs**  
 400 State St., Suite 100  
 Worcester, MA 01608  
 T: 508.841.4895

**Mark**   **Date**   **Description**  
 01   01/11/18   Design Development Set  
 02   11/20/18   27th Permit Submission  
 03   02/06/19   Permit Submission

**Drawing Title:**  
 Utility Plan

**Graphic Scale:**  
 0'   20'   40'

**GS**  
 THE DEPARTMENT OF  
 GENERAL SERVICES

**DPR**  
 DC DEPARTMENT OF PARKS AND RECREATION

**WE ARE WASHINGTON DC**

# Walking Trail Types

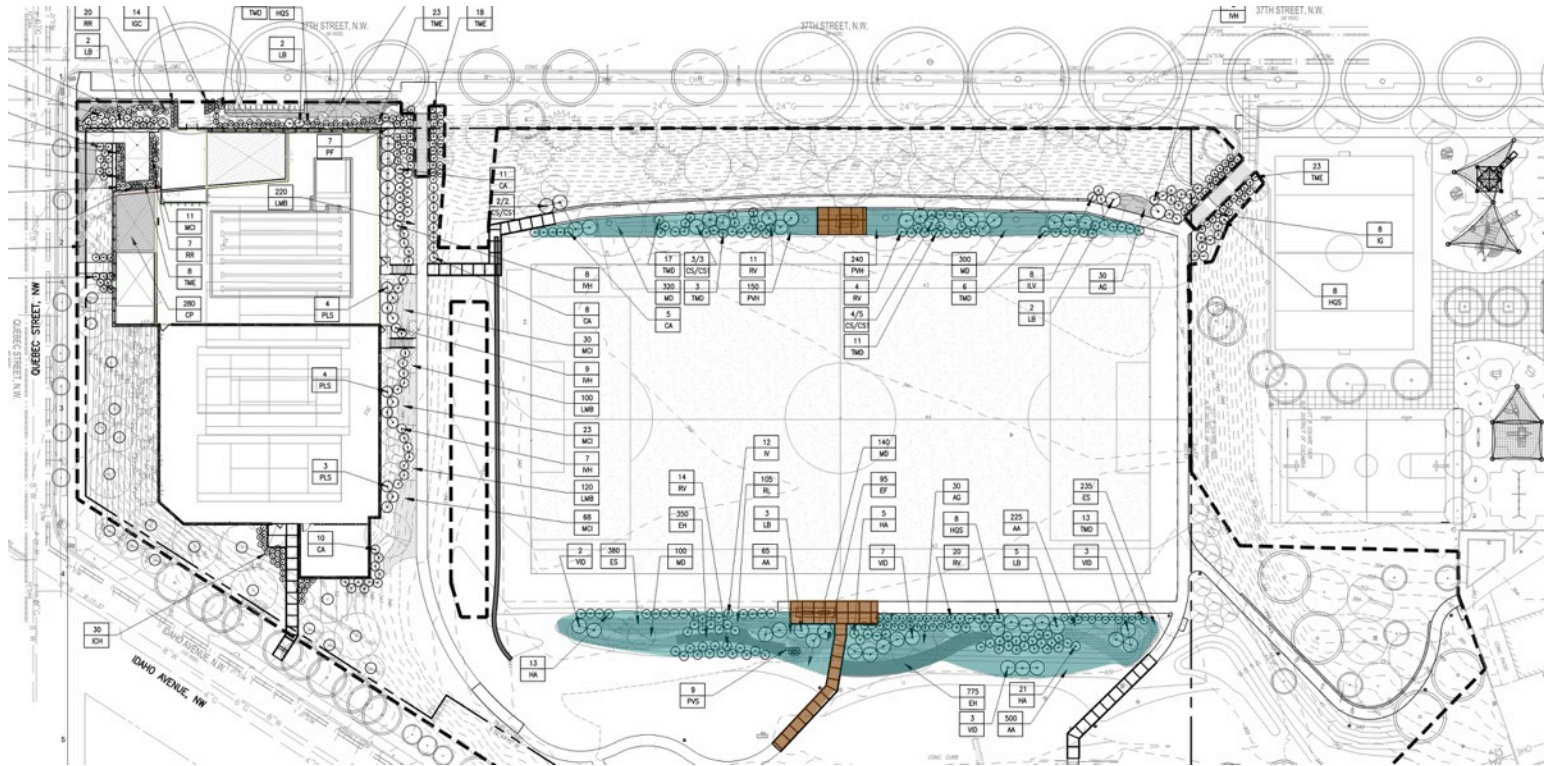


Boardwalks



Existing Concrete Paths





# Bio-Filtration Areas

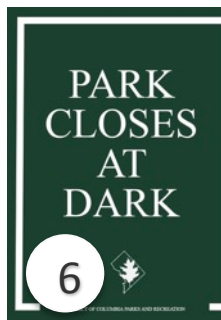
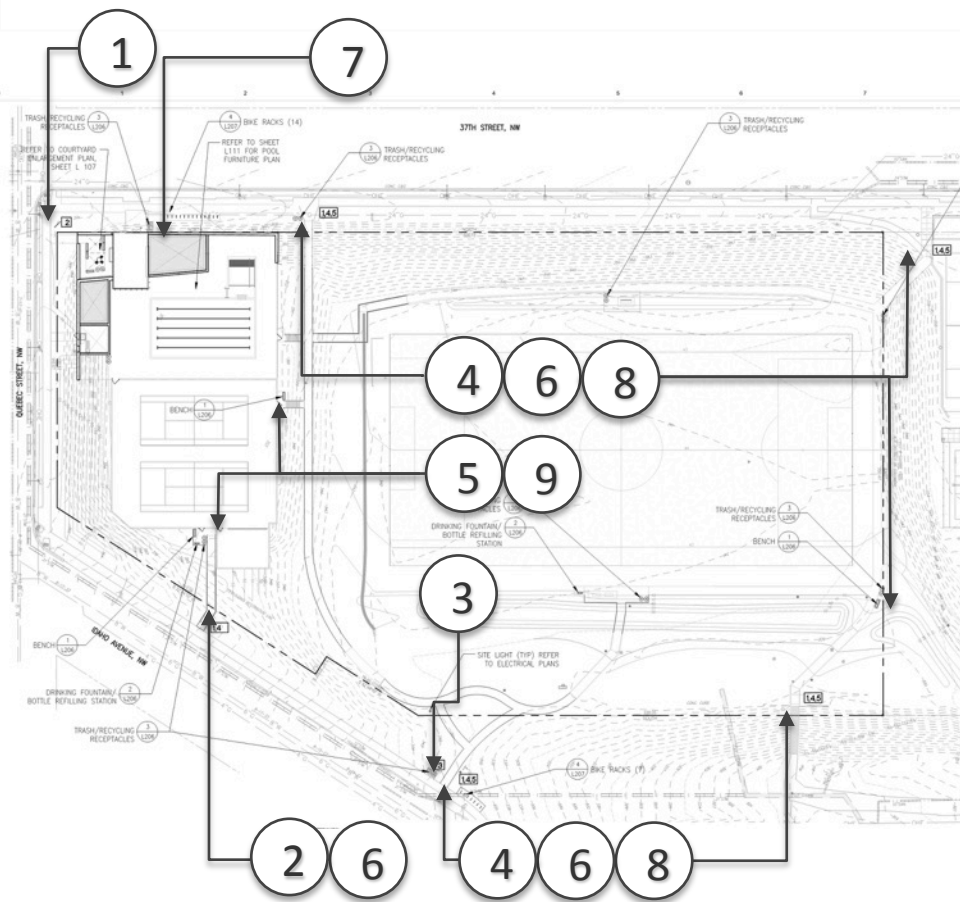


Raised boardwalk & western bio-retention area

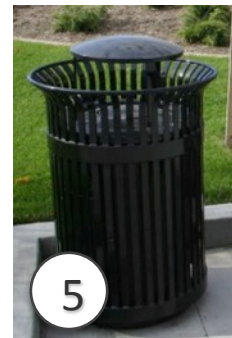
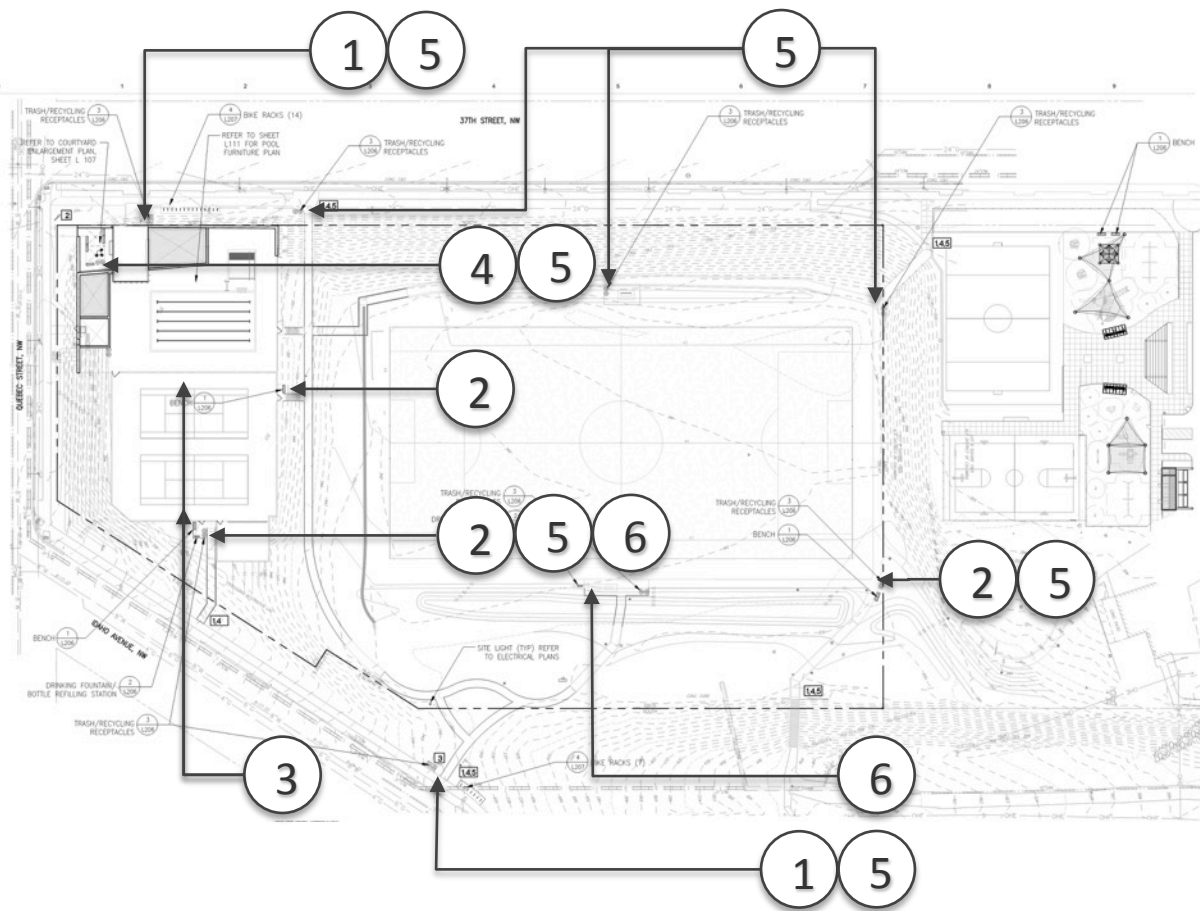
## Bio-Filtration Area

- Stormwater Management
- Native Habitats
- Butterfly Garden
- Educational Signage
- Boardwalks









# Site Furnishings

[illegible]

Hearst Park - Carvalho  
Perspective 2b



# Hearst Park Pool & Pool House

## Design Overview:



Limits of Ex.  
Tennis Courts

Limits of  
Proposed  
Construction

- All work is to stay south of the existing tennis fence
- The heritage trees are a minimum of 40' away from the limit of work