

we elev★te



HYDE ADDISON ELEMENTARY SCHOOL

Community Meeting

November 19th, 2014

Guidelines for a Successful Meeting

- RESPECT EACH OTHER
- CELLPHONES OFF OR ON VIBRATE
- Q&A WILL BE TAKEN AT THE END OF THE PRESENTATION

Agenda

- ☐ Introductions
- ☐ Where we are
- ☐ Design
- ☐ Next Steps
- ☐ Contact Information
- ☐ Questions and Answers

Where We Are

1. Per the approved CIP the Hyde Addison allocations are:

- \$6.36 in FY16
- \$9.00 in FY17

For a Total Budget of \$15.36 million

2. Met with the Old Georgetown Board staff

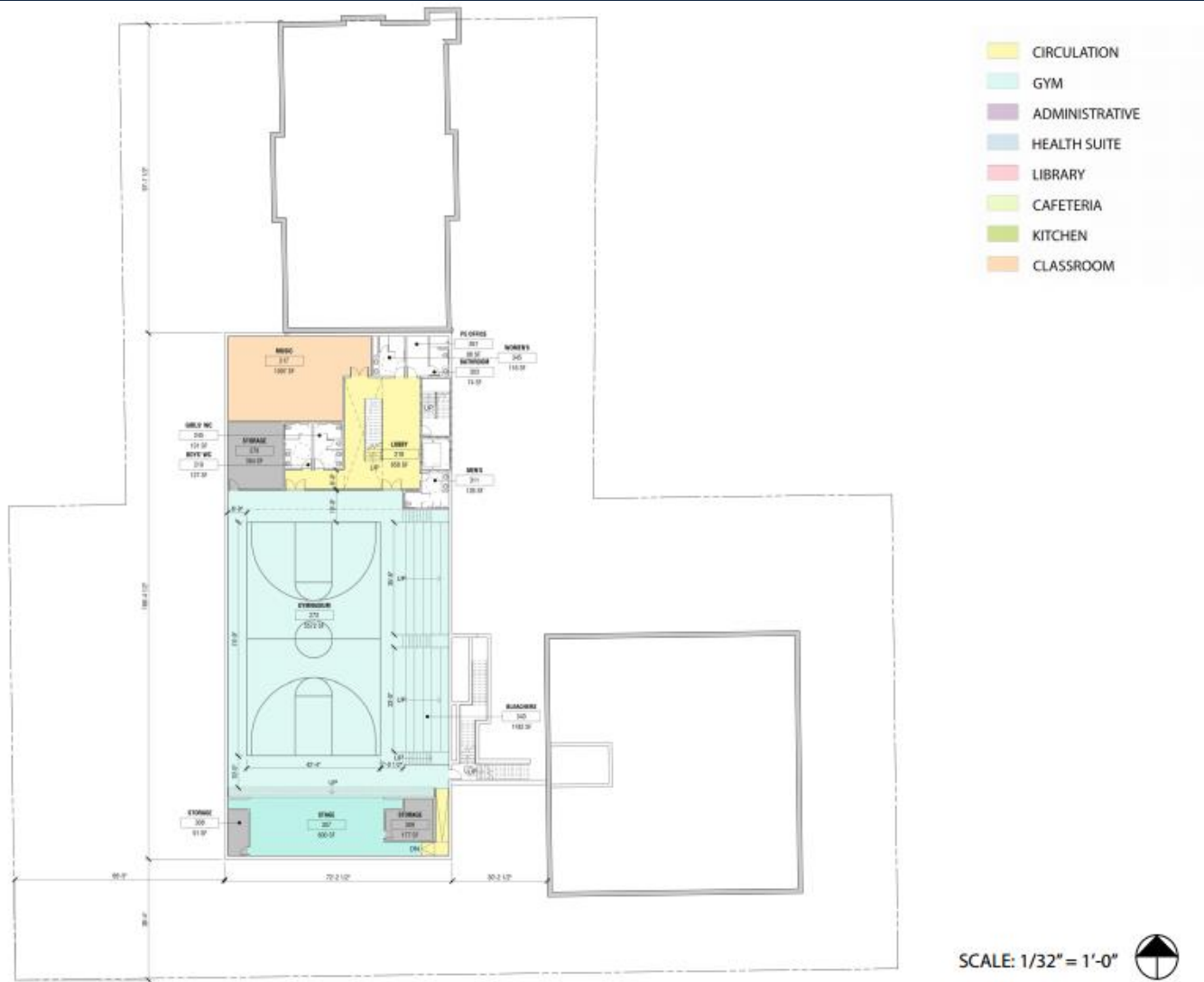
3. On-boarded and transitioned new PM



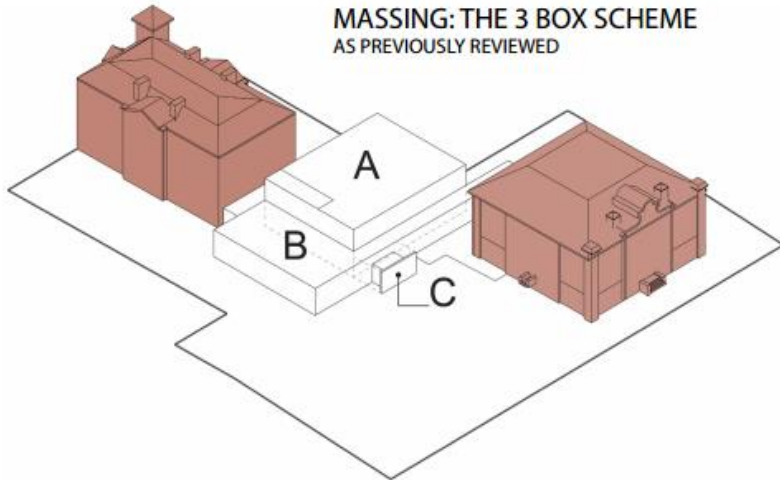
ADDISON
EXISTING PARKING
EXISTING MINI AMPITHEATRE

HYDE
EXISTING ASPHALT PLAY COURT

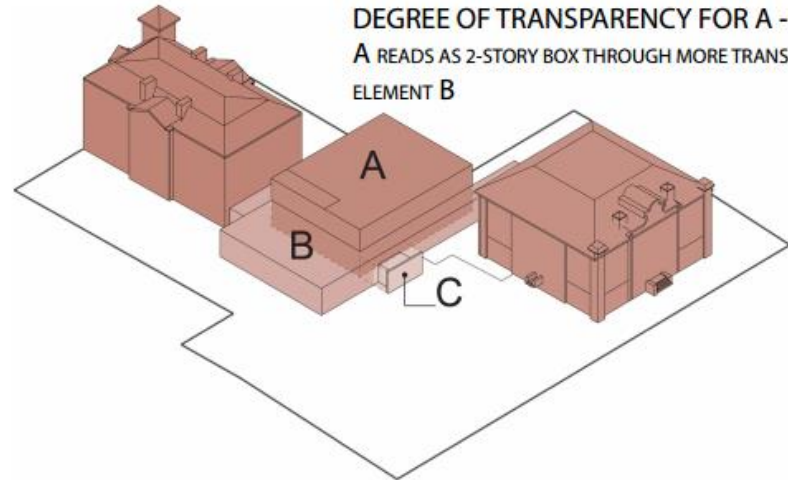




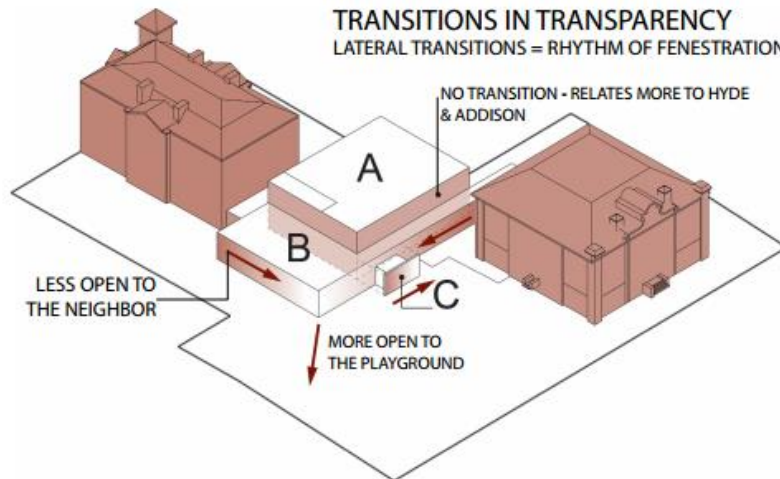
MASSING: THE 3 BOX SCHEME
AS PREVIOUSLY REVIEWED



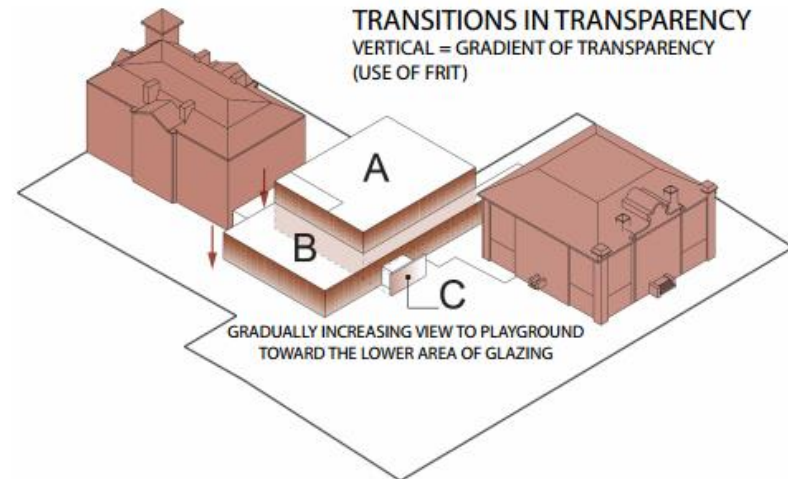
DEGREE OF TRANSPARENCY FOR A - B - C
A READS AS 2-STORY BOX THROUGH MORE TRANSPARENT ELEMENT B

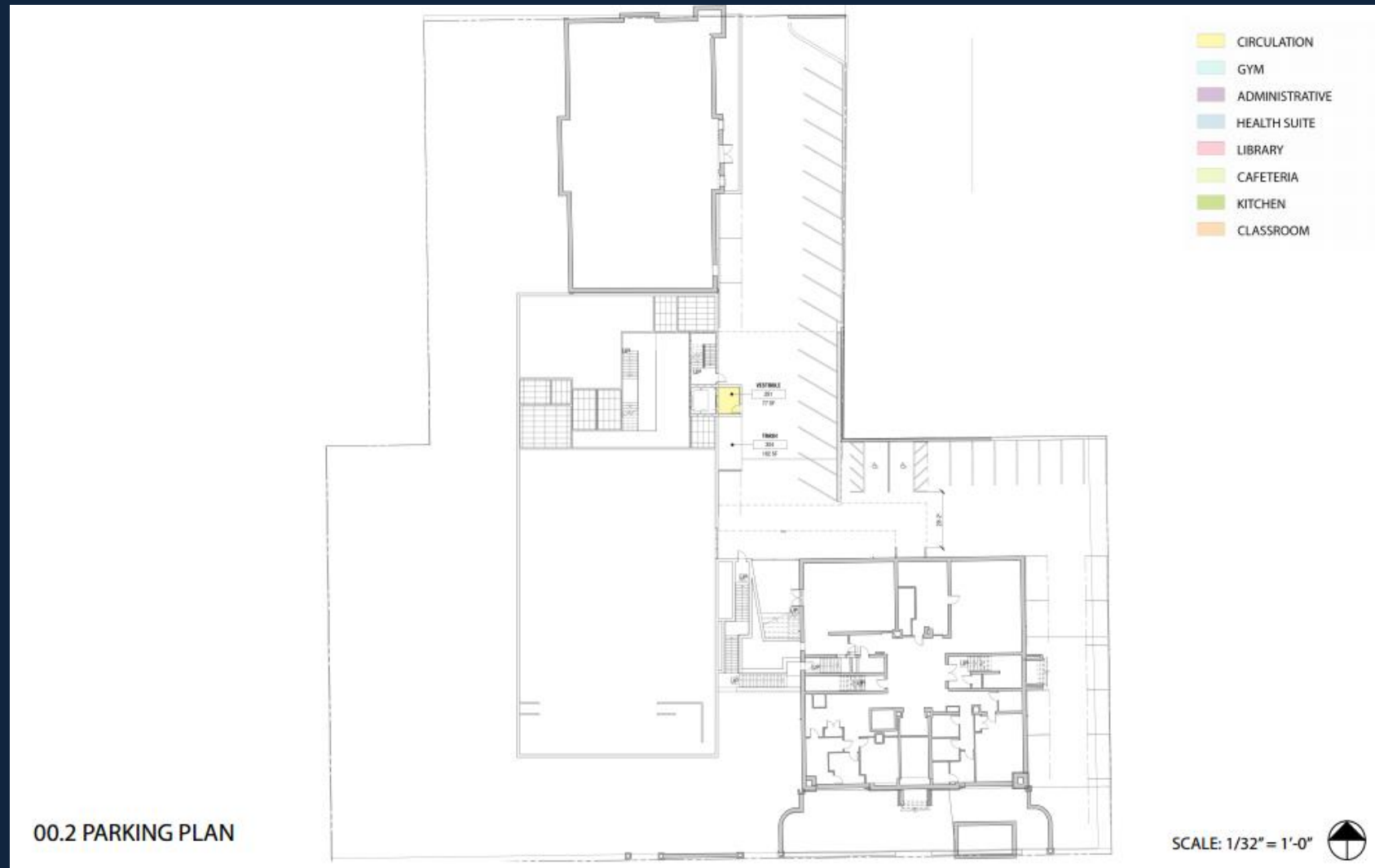


TRANSITIONS IN TRANSPARENCY
LATERAL TRANSITIONS = RHYTHM OF FENESTRATION



TRANSITIONS IN TRANSPARENCY
VERTICAL = GRADIENT OF TRANSPARENCY
(USE OF FRIT)





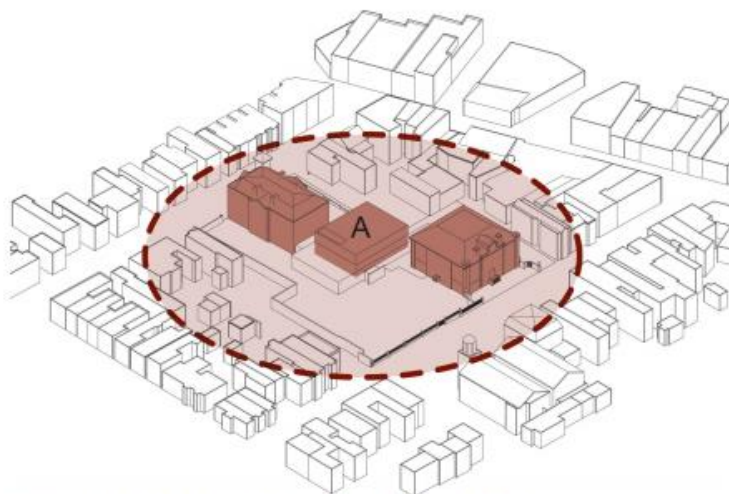




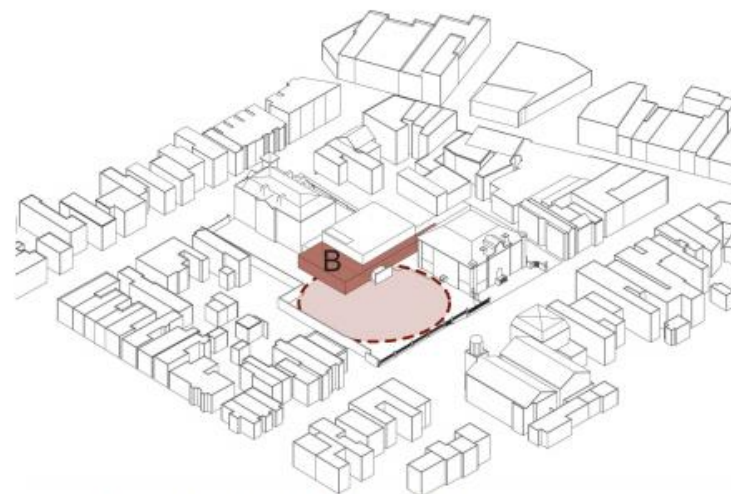
02 FLOOR PLAN

SCALE: 1/32" = 1'-0"

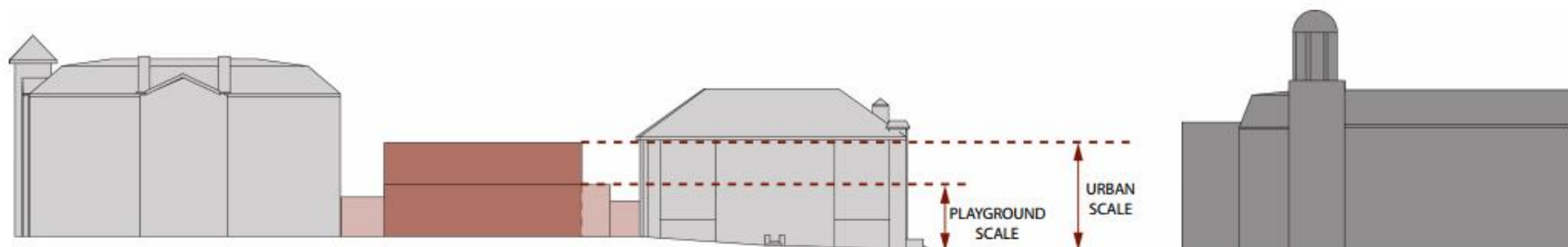




RELATIONSHIP TO THE SCHOOL ENSEMBLE
THE 2-STORY BOX SPEAKS TO THE ENSEMBLE OF HYDE-ADDISON, THE SITE AND ADJACENT BUILDINGS



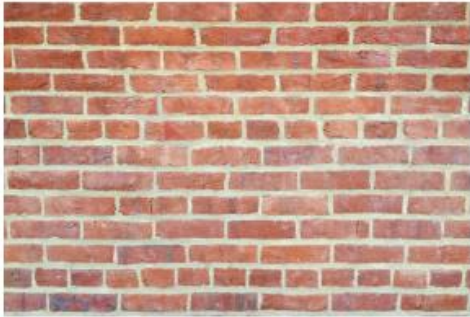
RELATIONSHIP TO THE PLAYGROUND
THE LOW 1-STORY BOX SPEAKS TO THE INTERNAL SPACE OF THE ENSEMBLE



RELATIONSHIPS AT DIFFERENT SCALES

we elev★te

bloc atlantic
SHINBERG.LEVINAS



ADDISON BRICK



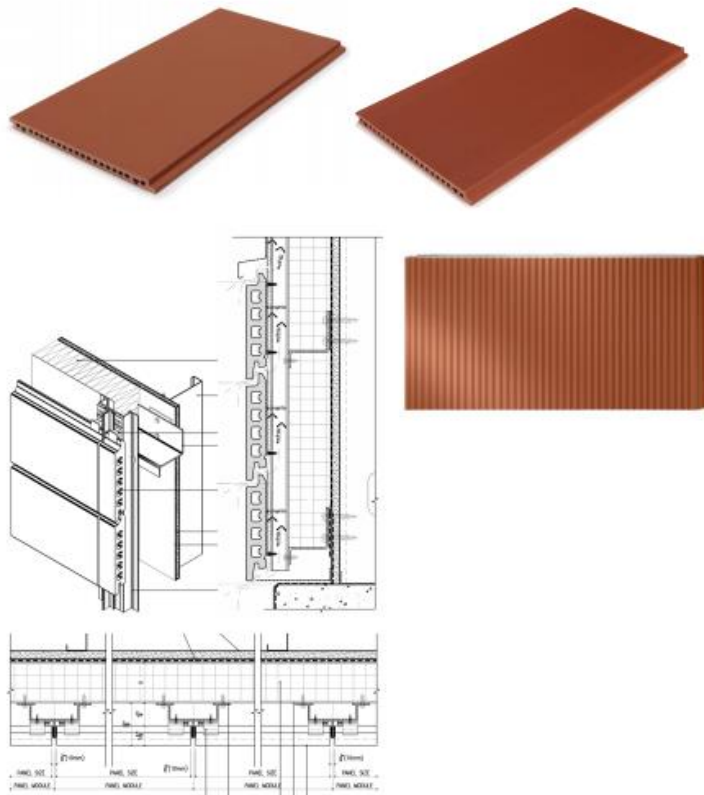
TERRACOTTA



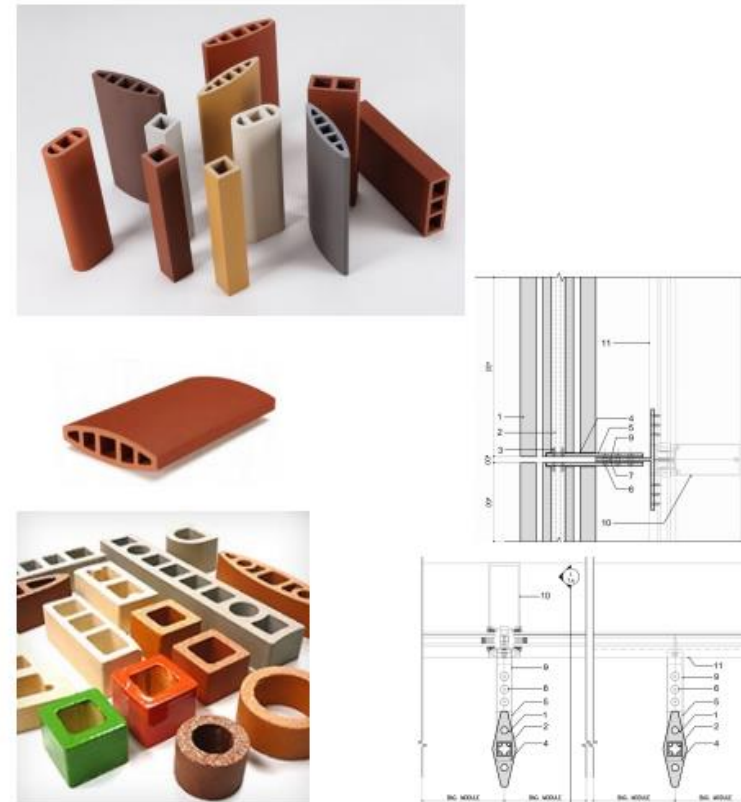
HYDE BRICK

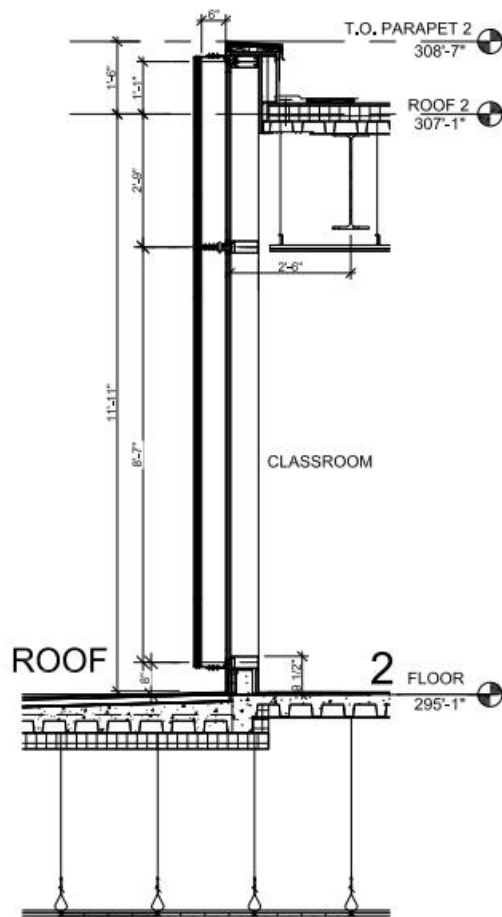
TERRACOTTA SYSTEMS ARE WELL-ESTABLISHED AND AVAILABLE WITH STANDARD SHAPES AND CONNECTIONS

TERRACOTTA RAINSCREEN

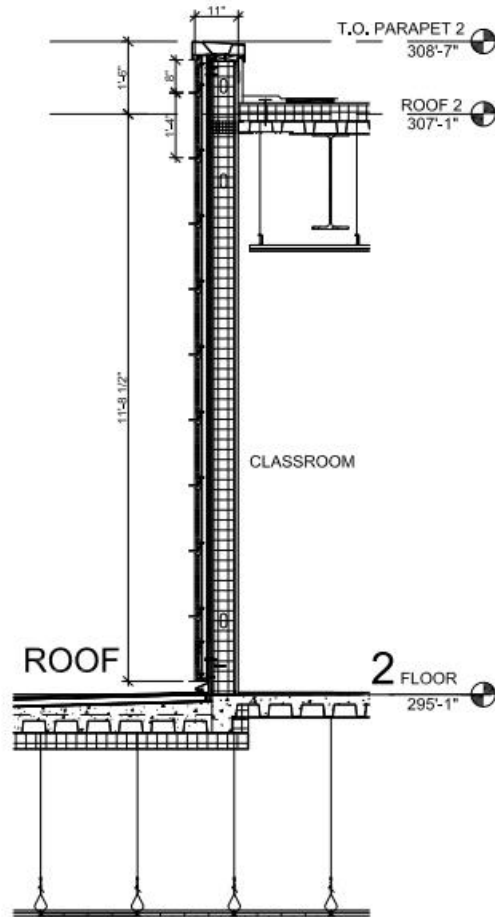


TERRACOTTA BAGUETTES

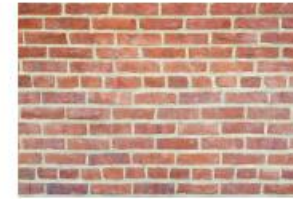




WALL TYPE A



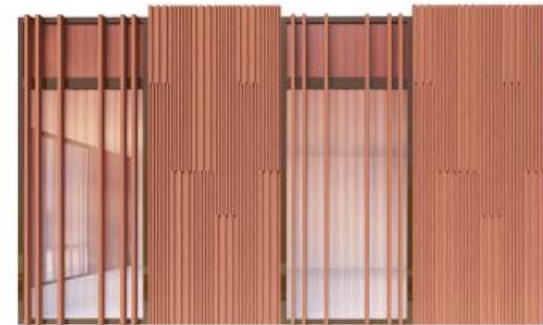
ADDISON



HYDE

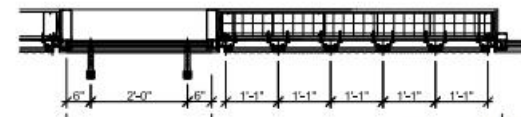


TEXTURED TERRACOTTA IS AN APPROPRIATE MATERIALITY TO BRICK TEXTURES OF HYDE AND ADDISON

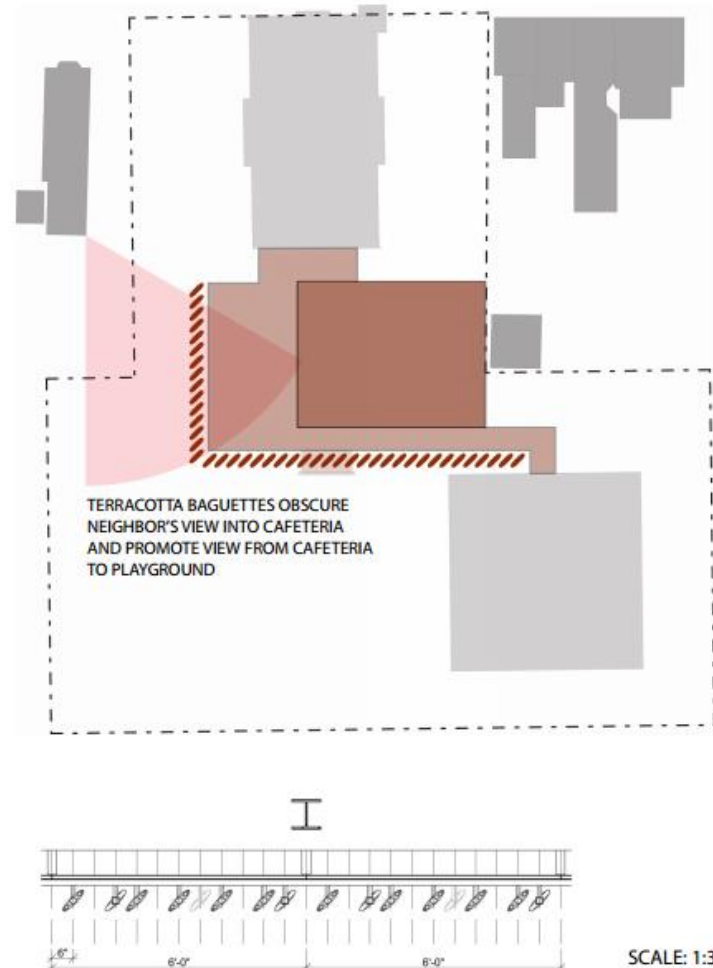
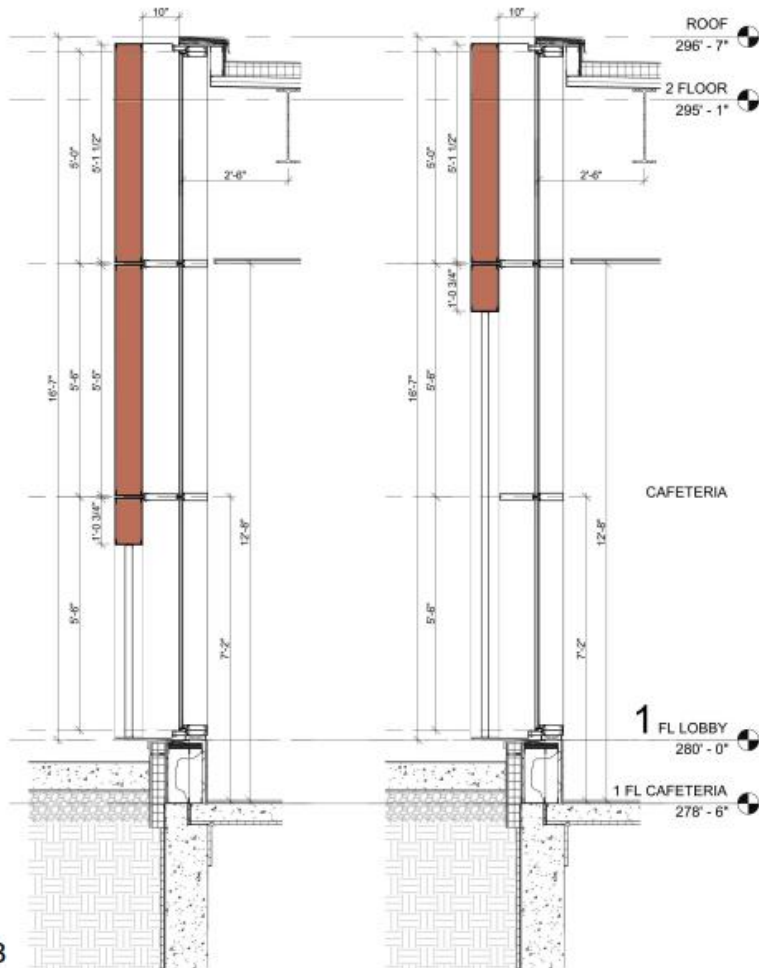


2" SQUARE
TERRACOTTA
TUBES

TEXTURED
TERRACOTTA
PANELS



SCALE: 1:30



WALL TYPE B

SCALE: 1:30



VIEW INTO PLAYGROUND FROM CAFETERIA



SOUTH ELEVATION: OPT 1 FOR BOX A



SOUTH ELEVATION: OPT 2 FOR BOX A



1/32" KEY

SOUTH ELEVATION: O STREET



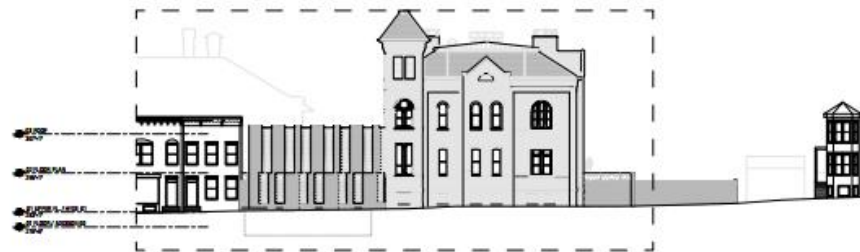
PARKING BELOW

NORTH ELEVATION: OPT 1 FOR BOX A



PARKING BELOW

NORTH ELEVATION: OPT 2 FOR BOX A

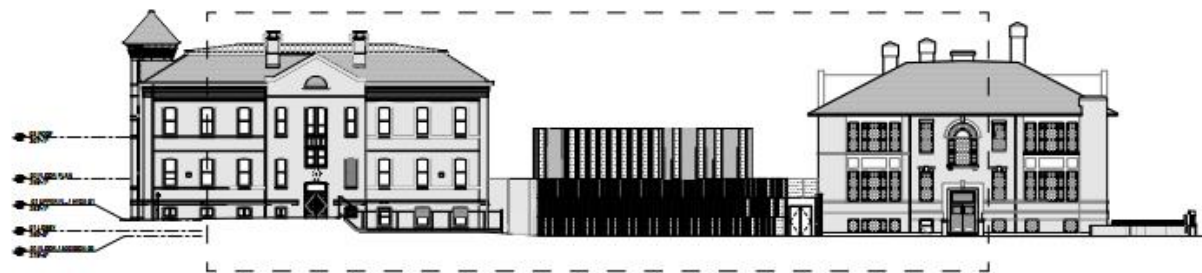


1/32" KEY

NORTH ELEVATION: P STREET

we elev★te

bloc atlantic
SHINBERG.LEVINAS



1/32" KEY

WEST ELEVATION



VIEW ALONG O STREET



VIEW FROM ACROSS O STREET



VIEW FROM O STREET - OPT 1 FOR BOX A



VIEW FROM O STREET - OPT 2 FOR BOX A



VIEW FROM SW CORNER OF SITE - OPT 1 FOR BOX A



VIEW FROM SW CORNER OF SITE - OPT 2 FOR BOX A



VIEW FROM O STREET GATE - OPT 1 FOR BOX A



VIEW FROM O STREET GATE - OPT 2 FOR BOX A



VIEW FROM PLAYGROUND - OPT 1 FOR BOX A



VIEW FROM PLAYGROUND - OPT 2 FOR BOX A



VIEW FROM P STREET - OPT 1 FOR BOX A



VIEW FROM P STREET - OPT 2 FOR BOX A

Next Steps

- Submission to Old Georgetown Board on 11/20.
- Presentation to Old Georgetown Board on 12/3.
- We will have bi-monthly SIT meetings beginning in early December 2014.
- Our next Community Meeting will be early Spring 2015.
- Updates will be made to the Community as needed.

Contact Information

Department of General Services (DGS)

Kenny Diggs, Associate Director of Communications & Government Affairs

kenneth.diggs@dc.gov

202-580-9361

John Montemayor, Project Manager

jmontemayor@programmanager.com

Question & Answer

Thank you for your time!

Get ***Social*** with us on Facebook & Twitter Today!



Follow @DCDGS



Become a Fan @DC Department of General Services

