

JELLEFF: COMMUNITY MEETING



WEDNESDAY, MAY 08, 2019

RULES OF THE ROAD:

Welcome! Thank you for your participation.

- Please Hold all questions until the end of the presentation.
- Sign-In Before you leave.

AGENDA:

6:30-6:35: Introduction and topics overview from DPR and DGS (5 min.)

6:35-6:40: Comments from the ANC (5 min.)

6:40-7:20: Jelleff Field Discussion

Review Existing Field Layout, History and Discuss Current Usage (10 min.)

Questions/Comments and Answers (30 min)

7:20 HARD STOP

7:20-8:00: Jelleff Modernization Discussion

Review Existing BGC/DPR Layout and Current Usage (10 min.)

Questions/Comments/Feedback and Answers (30 min)

PART 1

6:40-7:20: JELLEFF FIELD DISCUSSION



Sanborn Mapping

JELLEFF FIELD



**BUILD
MAINTAIN
SUSTAIN**



DPR
DC DEPARTMENT OF PARKS AND RECREATION



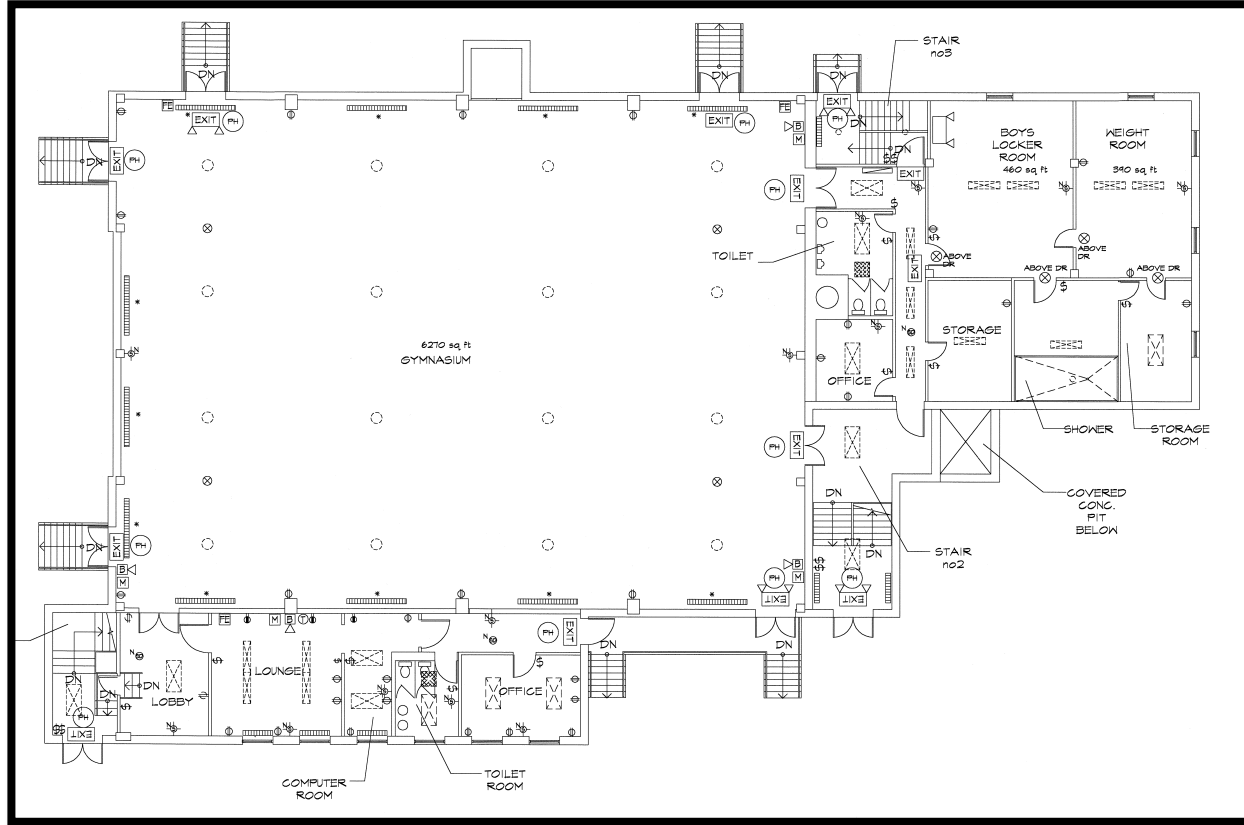
PART 2

7:20-8:00: JELLEFF MODERNIZATION DISCUSSION

PROJECT OVERVIEW:

- There is Capital Improvement Budget of \$7,000,000 approved by Council for \$2 million in Fiscal Year 2018 (FY18) and \$5 million in FY19
- The funds are allocated to bring the building up to ADA compliance for universal access and to ensure a completely new HVAC system is installed. At the same time the building will be looked at holistically for complete code compliance and to ensure the facility is designed in a way to best serve the community. It will be designed with programmatic space that best meets the needs of the community. A modernized community center may feature a gymnasium, classrooms, computer lounge, kitchen and other program spaces and improvements to the exterior of the park based on the budget.
- The modernized building may allow for expanded and new program opportunities within the existing building and this will become a great asset to the surrounding communities
- Jelleff Community Center is currently 18,000 square feet including a 6,300 square foot gym

JELLEFF: UPPER LEVEL PLAN



PROJECT TIMELINE:

Project Initiation and Planning (Spring 2018 – Spring 2019) – DPR and DGS

Funds are allocated in DPR's budget (Oct 1, 2017 for FY18 \$2,000,000)

And FY19 for the \$5,000,000 additional

DGS and DPR assign Project and Construction Managers

Scope of Work is crafted considering community-led input from Pre-Project Planning Phase

Procurement Phase (Spring/Summer 2019) – DGS

Request for Proposals is issued and Evaluation panel reviews submissions

Design Phase (Summer 2019 to Spring 2020) – DPR, DGS, and A/E

Broken down into 4 phases of design: Concept Design, Schematic Design, Design Development, and Construction Documents (Final Design Drawings and Project Specifications)

Review and comment periods for each phase

Community meetings and meetings with DC regulatory agencies take place during this phase

Preconstruction and Permitting Phase (Fall 2019- Winter/Spring 2020) – DGS, Regulatory Agencies, A/E

A/E submits final Construction Documents for permitting

DGS procures construction bids and awards a contract

Building permit issued

Construction Phase (Fall 2020-Spring 2021) – DGS, A/E, GC (Depends on type of Project)

GC constructs project based on drawings and specifications delivered

Quality assurance inspections performed by DC regulatory agencies

Final inspections and creation of final punch list

Close Out and Turnover (Summer 2021) – DGS, A/E, GC

Various park elements will become useable as they are completed

Final punch-list work is completed

Staff and maintenance assignments and training complete

As-build drawings, warranties, and operations and maintenance manuals are provided to owner

Project complete and reopens to public

NEXT STEPS:

- This presentation will be posted on the DGS website
- Request For Proposals (RFP) for the Design/Build Procurement to be written and released
- Next community meeting will be held when the Design/Build Contractor is on board.

Question and Comments

EXAMPLES:

- WHAT PROGRAMS WOULD YOU LIKE TO SEE OFFERED AT JELLEFF?
- WHAT KIND OF SPACES WOULD YOU LIKE JELLEFF TO CONTAIN?

CONTACT INFORMATION

DEPARTMENT OF GENERAL SERVICES (DGS)

Wayne Gore, Community Engagement and Outreach
wayne.gore@dc.gov

DEPARTMENT OF PARKS & RECREATION (DPR)

Peter Nohrden, ASLA / Project Manager
peter.nohrden@dc.gov