



LAFAYETTE ELEMENTARY SCHOOL  
WASHINGTON, DC



ART INITIATIVE PROPOSAL

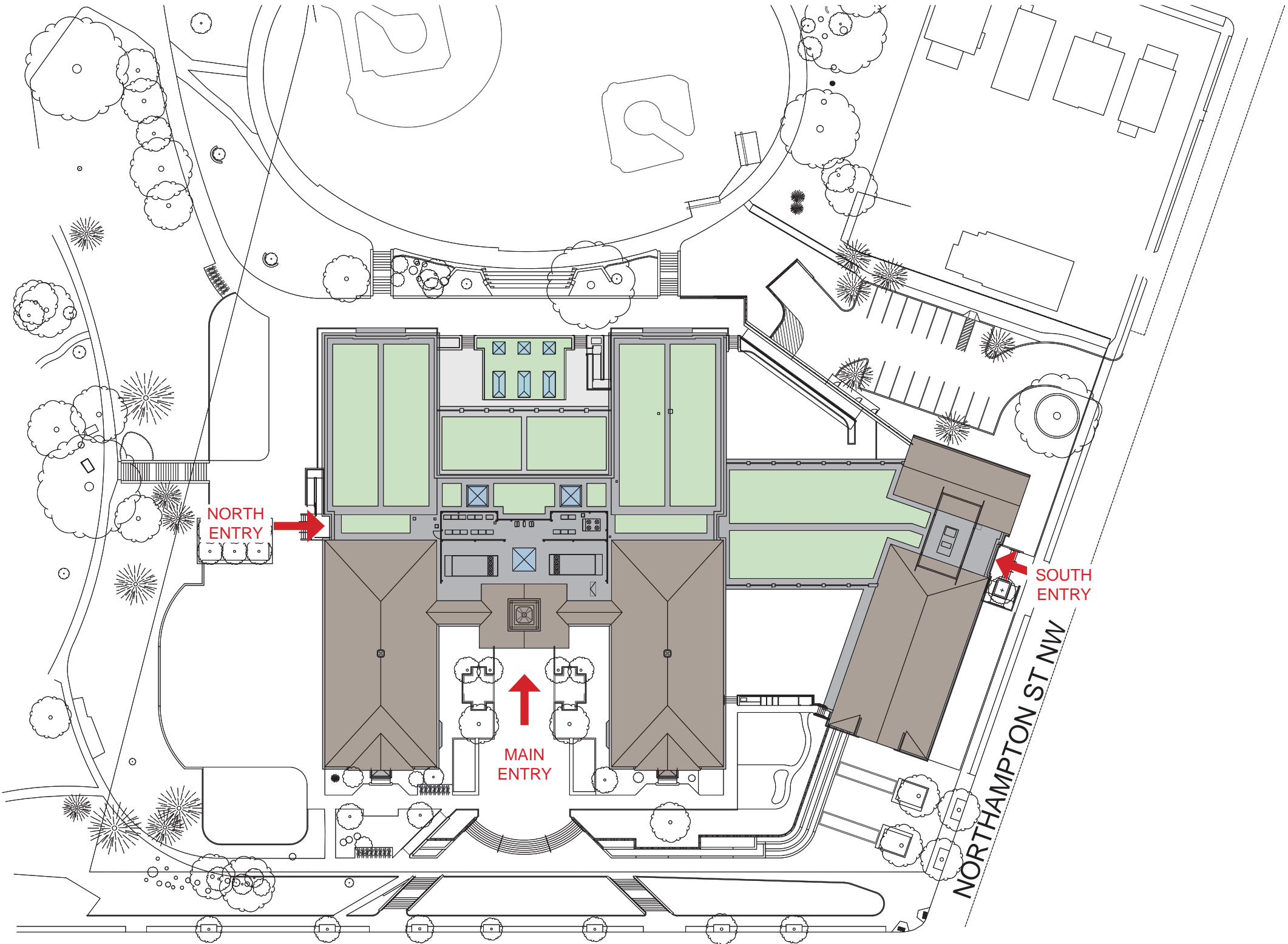
HARTMAN-COX | GRIMM + PARKER ARCHITECTS  
JULY 14, 2016

# BACKGROUND

Lafayette Elementary School was established in 1928 in the northwest neighborhood of Chevy Chase, DC to meet the needs of families moving into new residential communities located along the Connecticut Avenue corridor. The school site is situated in a community of primarily single-family homes and shares its grounds with Lafayette Park and the Lafayette Recreation Center affording the children plenty of room to play and explore outdoors. The school building opened in 1931. Only a few years after opening, in 1936, the school underwent its first expansion creating a duplicate classroom wing with a central connection corridor and cupola. In 1978, the building grew through another expansion. This current project removes the 1978 expansion, which was out of character for the school building and the surrounding community, leaving only the historic 1930's era buildings which will be fully renovated to meet the modern standards and needs of the school system.

The modernization of the school includes two additional building wings similar in size to the original classroom wings, as well as a gymnasium, cafetorium, and multi-purpose space. This is the largest elementary school in the District of Columbia, with more than 700 students from pre-kindergarten through fifth grade, and has a well-deserved reputation for academic excellence, talented teachers, and an engaged parent community.

SITE PLAN

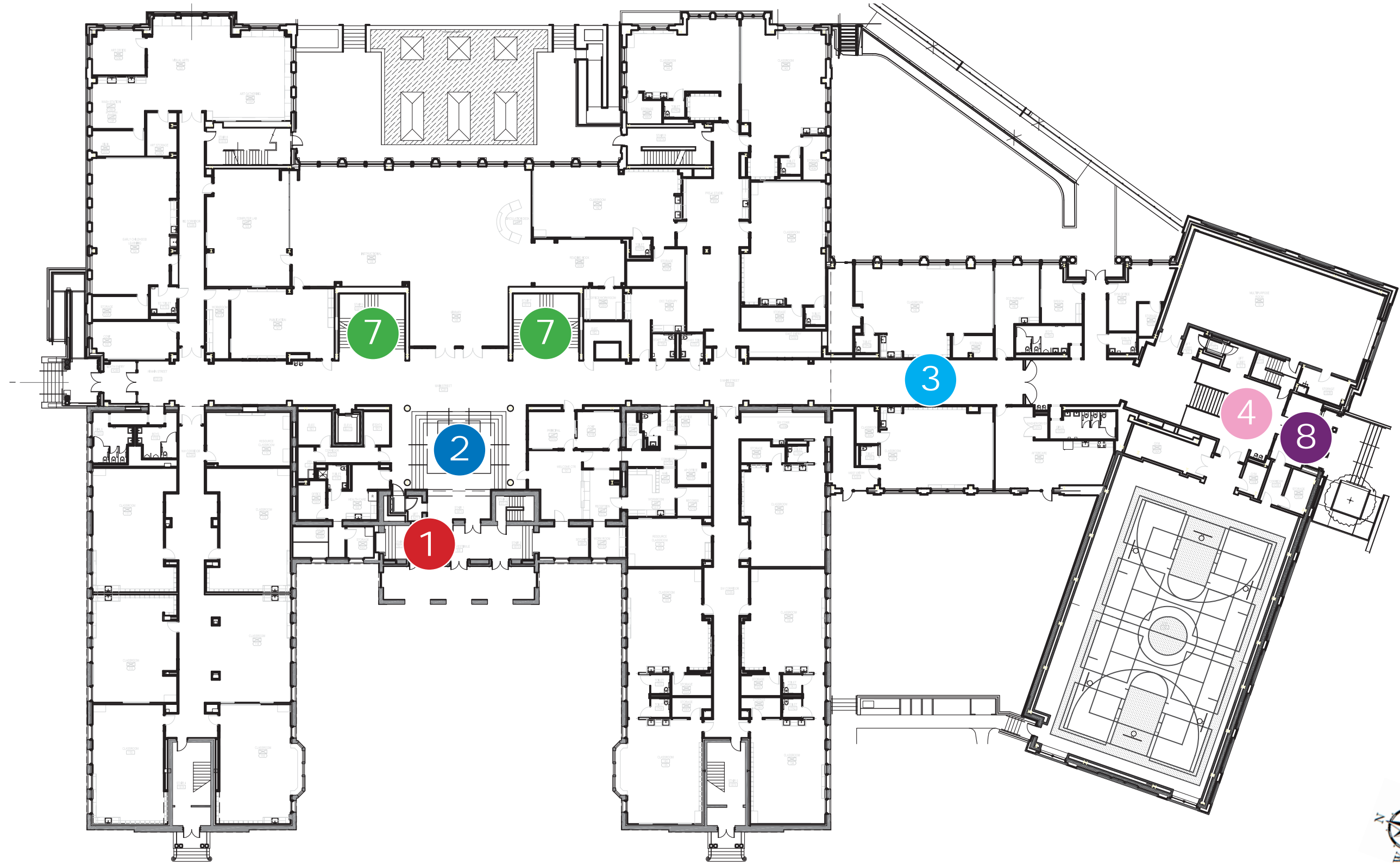


BROAD BRANCH RD NW

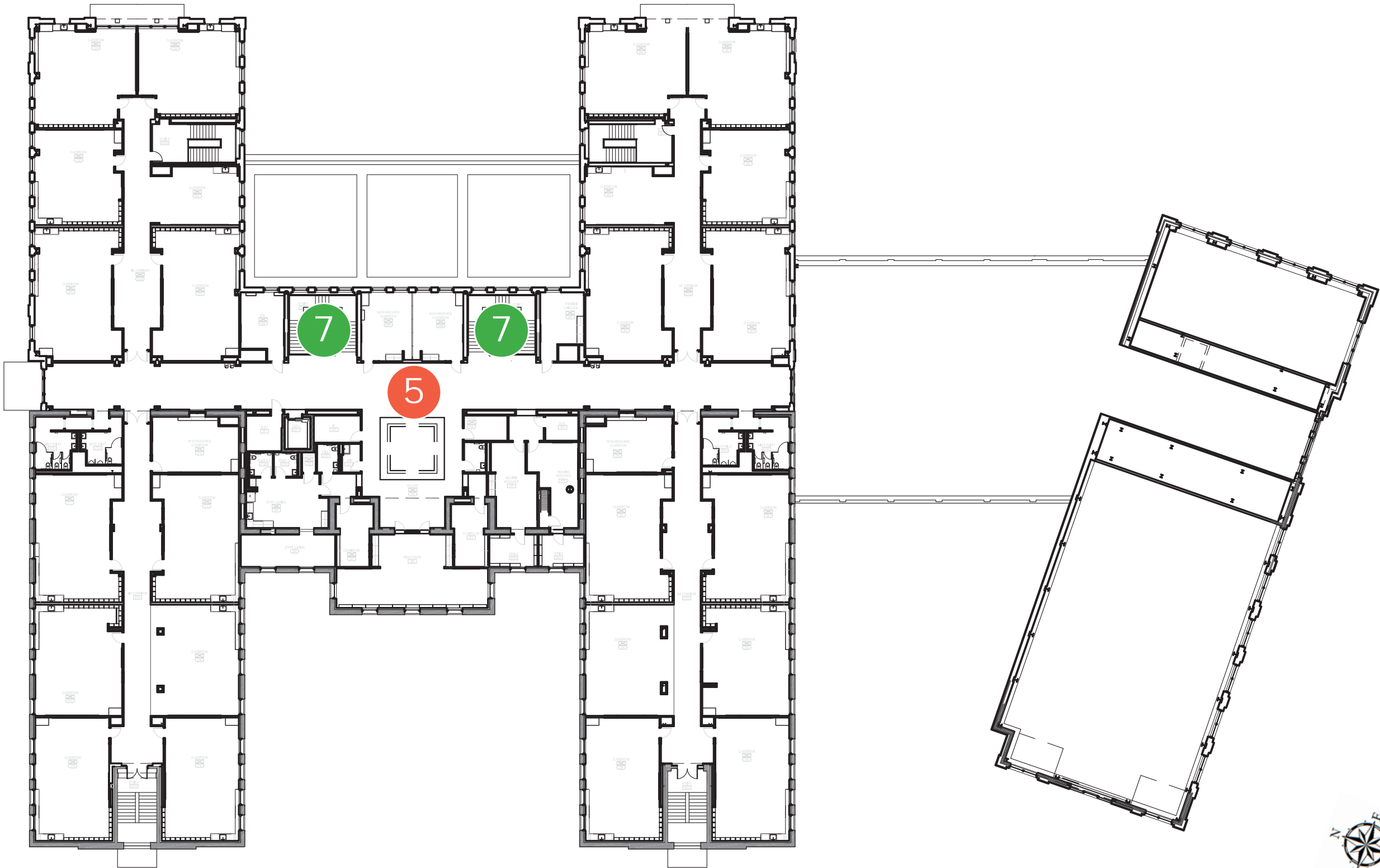
NORTHAMPTON ST NW



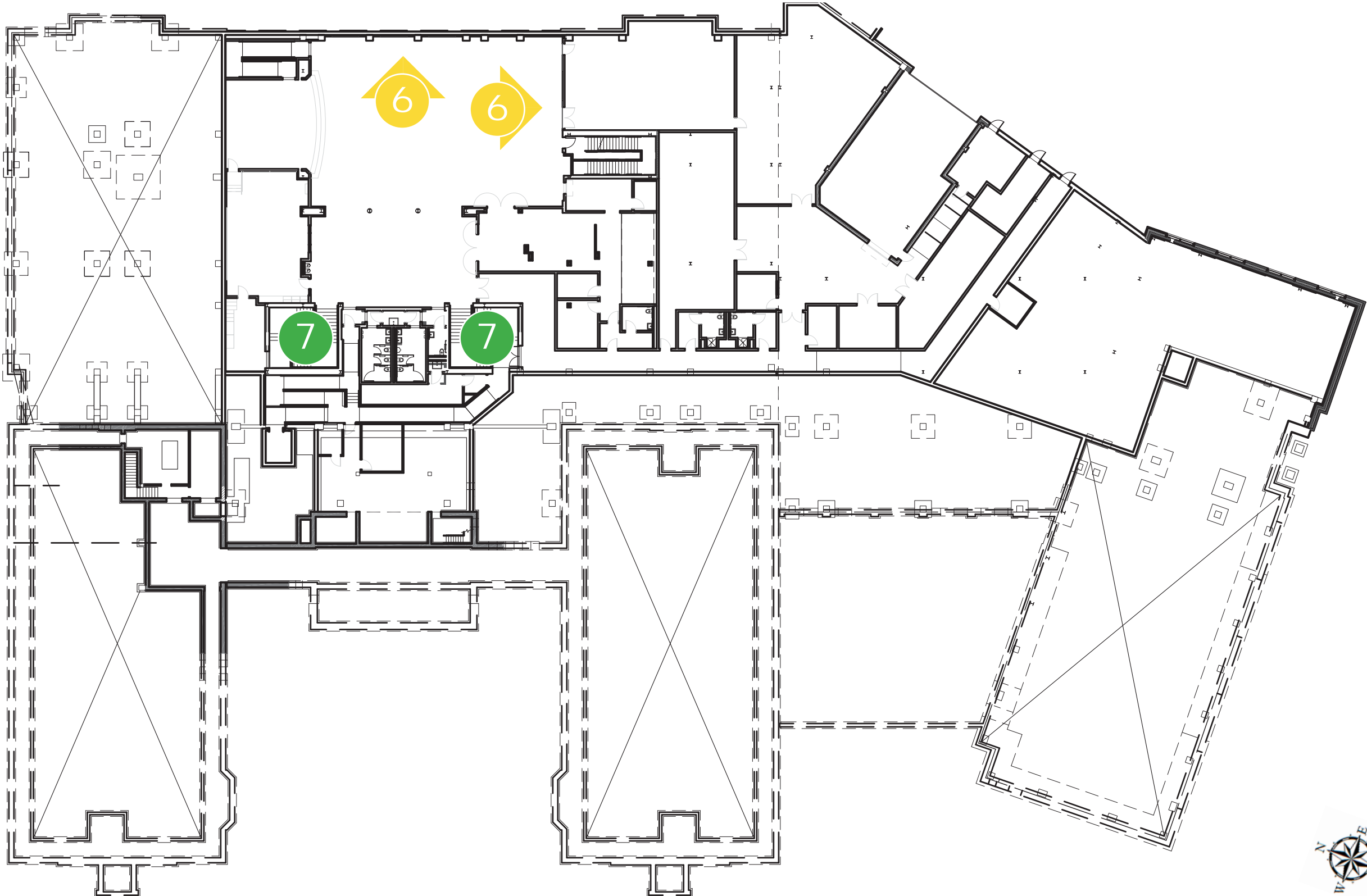
# FIRST FLOOR PLAN



# SECOND FLOOR PLAN



LOWER LEVEL PLAN





# 1. WEST ENTRY VESTIBULE- ARCHED NICHE

Installation type: 2D Artwork

Location: 1st Floor

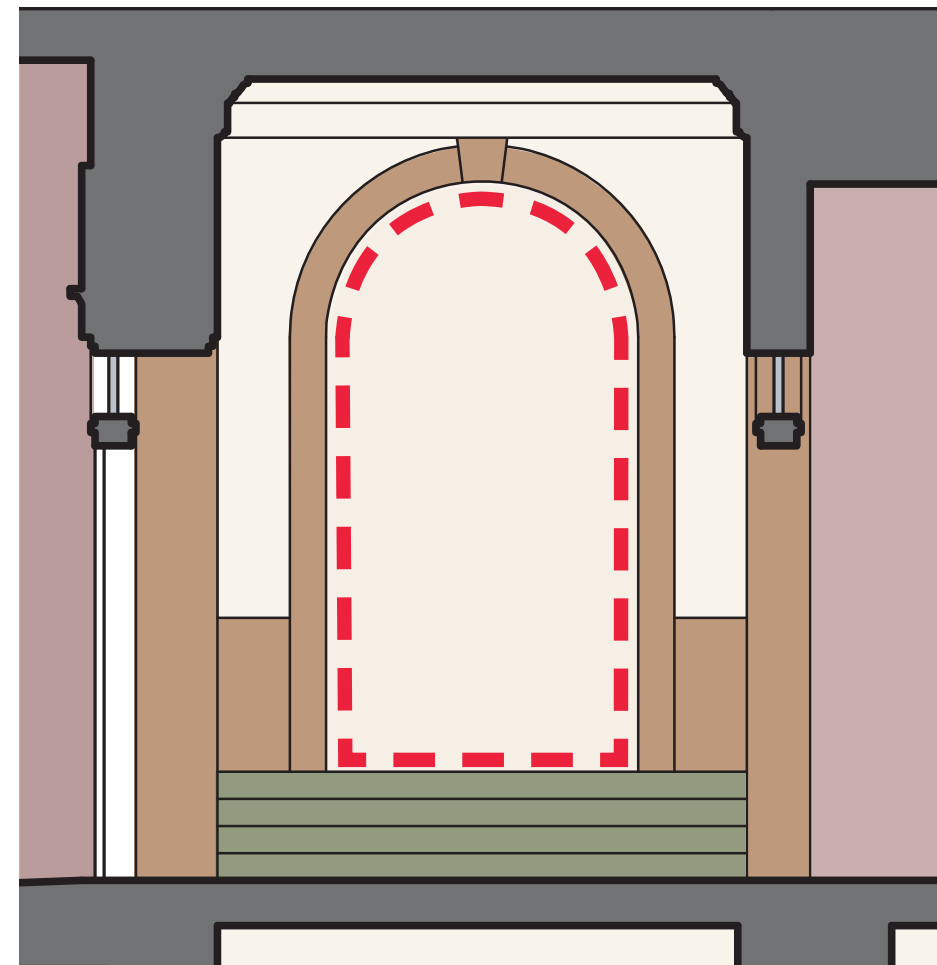
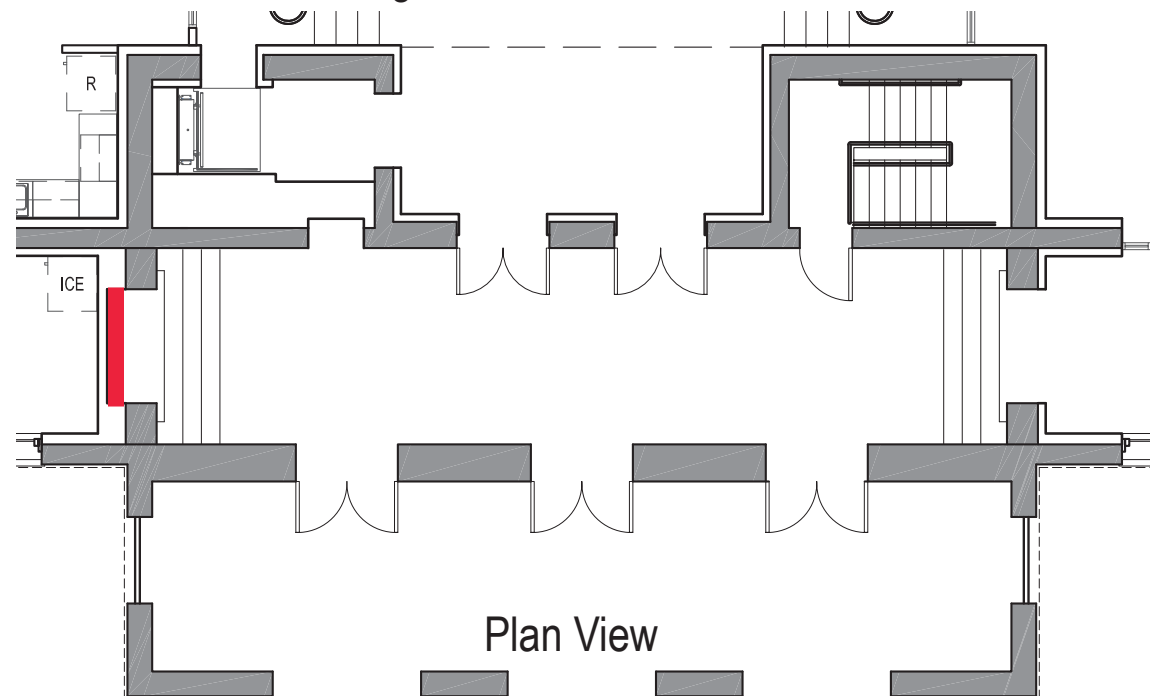
Max. Dimensions: 6'-2"W x 10'-11"H (Artist to verify all dimension in field)

Material: Artist's discession, should be durable (not paper)

Color: Black and white or Multi-colored

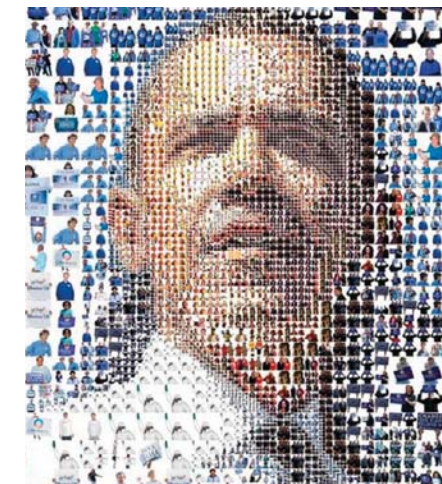
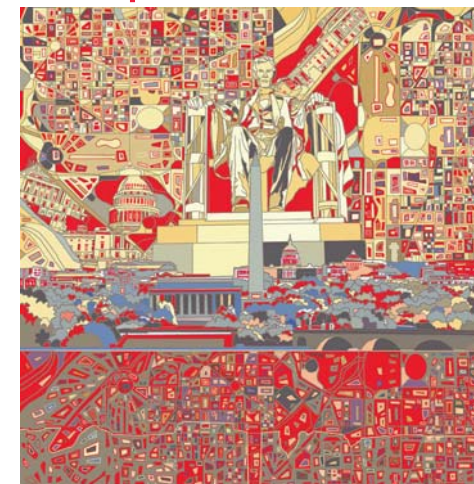
Note: Back wall of the niche. Existing wood trim to remain and should not be modified. Composition material to be durable. Possible theme to be about "Lafayette." This could be interpreted as man, the school, and community throughout history.

\*Preference will be given to local DC artist.



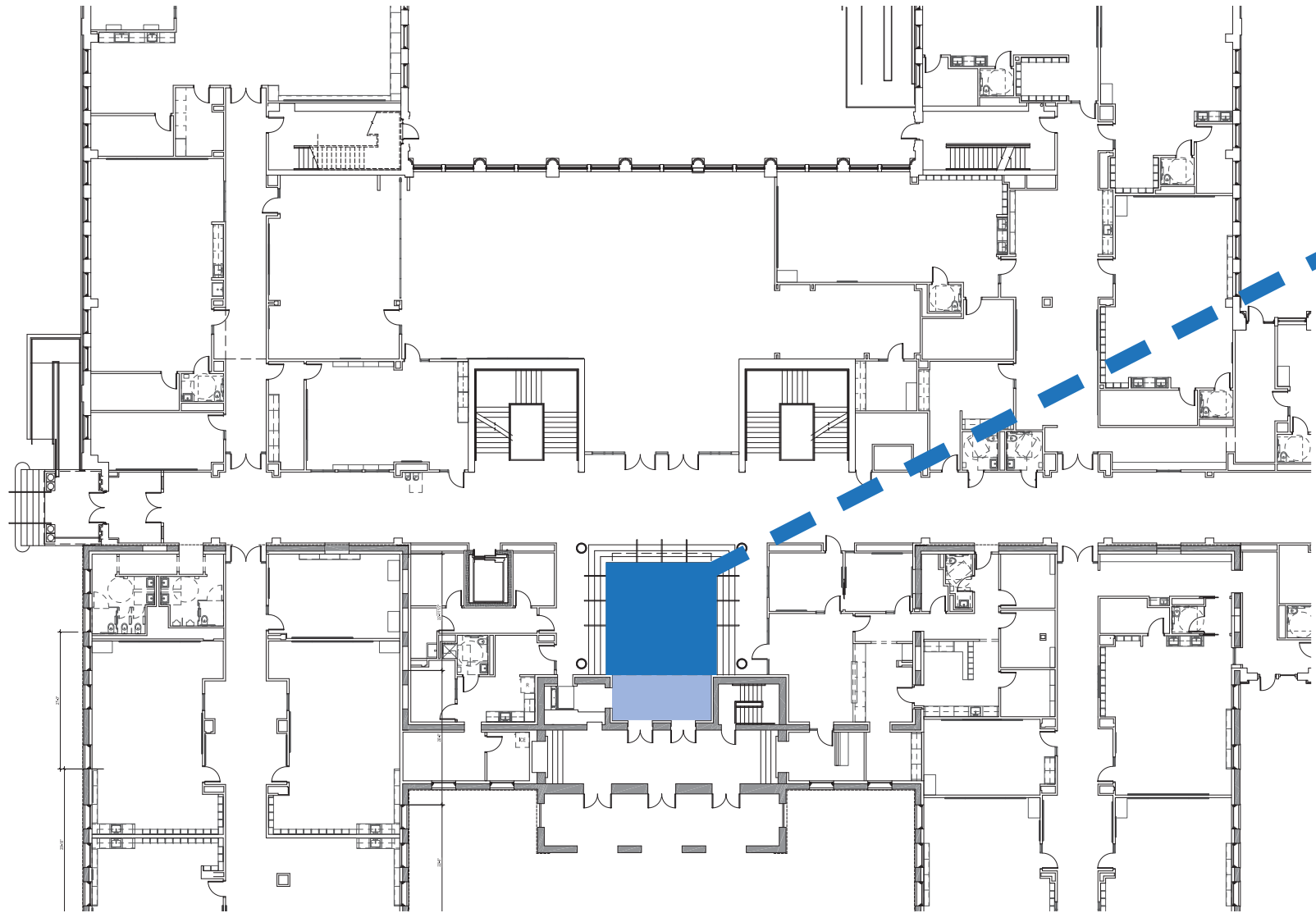
Elevation

## Inspiration



(Photo collage that creates a larger portrait.)

## 2. GREAT HALL FLOOR



Installation type: Floor 2D artwork  
Location: 1st Floor  
Dimensions: 21'-10"W x 21'-10"L, possible secondary area: 9'-0" x 19'-6"  
Material: terrazzo  
Color: Multi-colored and/or school colors

Terrazzo 2D floor design. Possibly a “mandala-esque” pattern or medallion. Non-representational graphics that highlight unique features of the school and immediate community.

Design to incorporate student feedback on design. Project installation in Sept 2016.



Inspiration

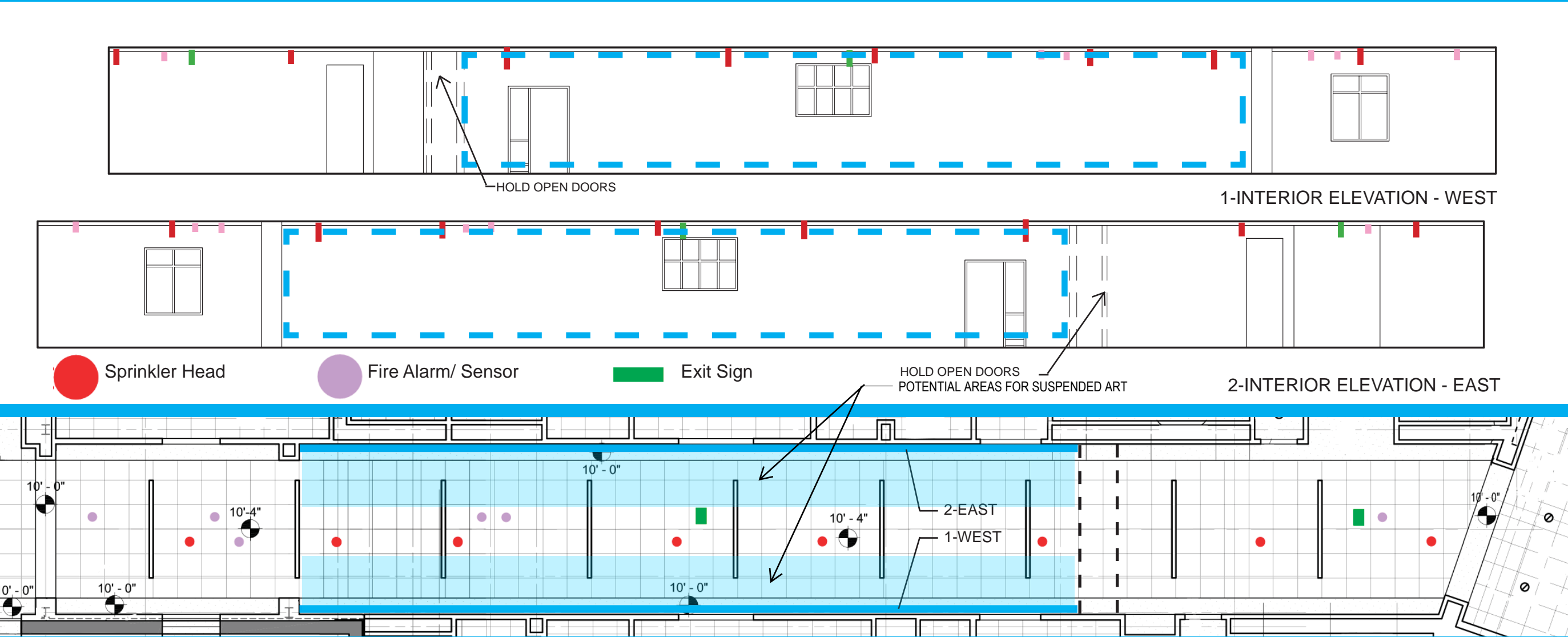


# 3. CONNECTOR WALLS

Installation type: Wall, 2D artwork  
Location: 1st Floor  
Max. Dimensions: two 64'-0"L x 10'-0"H areas opposite each other in the corridor (Artist to verify dimensions on site and coordinate with doors, interior windows, and other openings.)  
Material: Graphic print, canvas, paint, or other durable wall applied finish  
Color: Multi-Color

Note: Nature or garden themed artwork. Wall mural areas are indicated in blue below. Artist may have the possibility to suspend items (12" max height) from ceiling to extend the design if desired  
\*Preference will be given to local DC artist.

trees                      garden                      plants                      sky  
flowers                      sunset                      growth                      earth



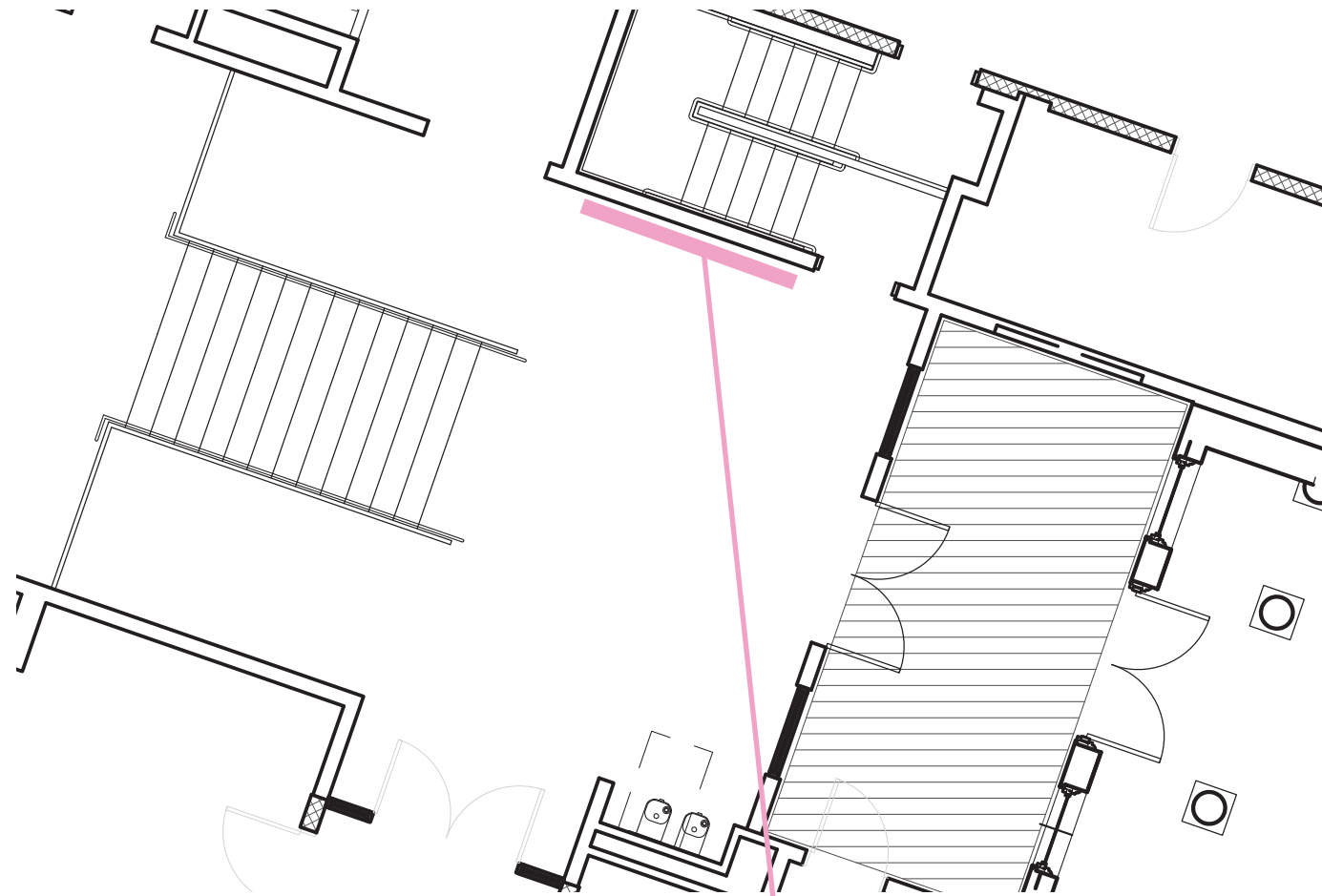
# INSPIRATION





## 4. SOUTH GYM LOBBY

fitness      play      strength      movement      agility



## 2D artwork - double story height wall

Installation type: Wall, 2D artwork

Location: 1st Floor

Max. Dimensions: 10'-0"W x 18'-0"H (Artist to verify all dimensions on site)

Material: Graphic print, canvas, paint, or other durable wall applied finish

Color: Multi-Color

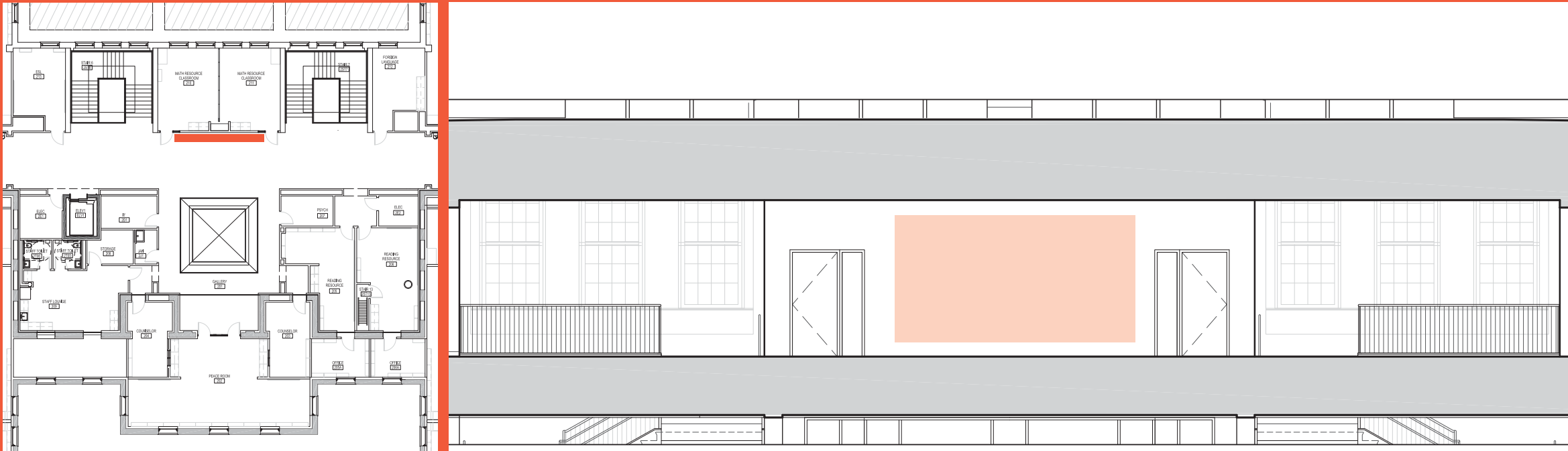
\*Preference will be given to local DC artist.





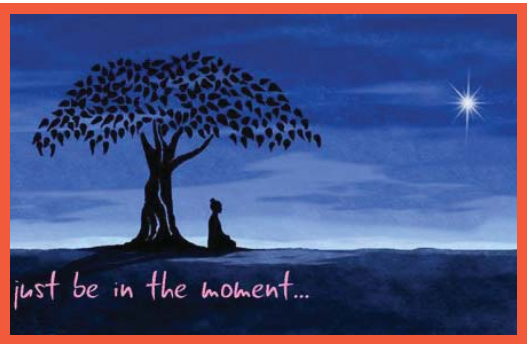
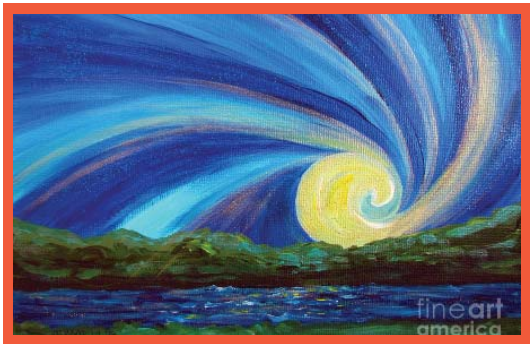
# 5. CENTER HALL- MURAL

Installation type: Wall, 2D artwork  
Location: 2nd Floor  
Max. Dimensions: 19'-0"W x 10'-0"H  
Material: Graphic print, canvas, paint, or other durable wall applied finish  
Color: Multi-Color



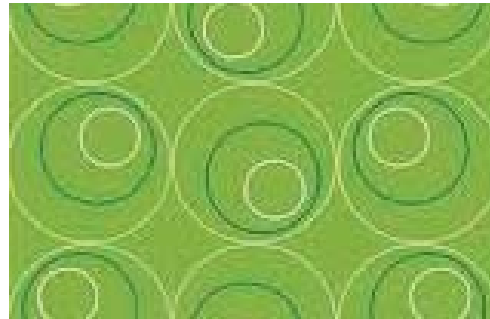
\*Note: Wall can be seen from First floor, at West Entry through Great Hall opening and double story space. Preference will be given to local DC artist.

mindfulness      serenity      kindness      peace (not literal sign)      flow      generosity      grace

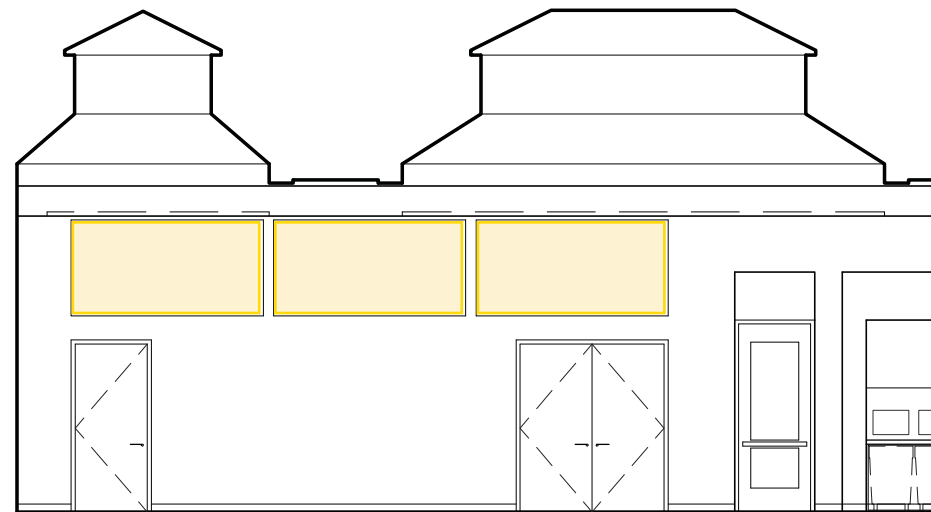




## 6. CAFETORIUM - GRAPHIC FOR ACOUSTIC PANELS



EAST WALL



SOUTH WALL

earth

sky

nature

growth

Installation type: Wall, 2D artwork

Location: Lower Level

Dimensions: 8'-0"W x 4'-0"H

Material: Graphic print

Color: Multi-Color

\*Preference will be given to local DC artist

## 7. STAIR SIX & STAIR SEVEN

Installation type: Suspended 3D artwork

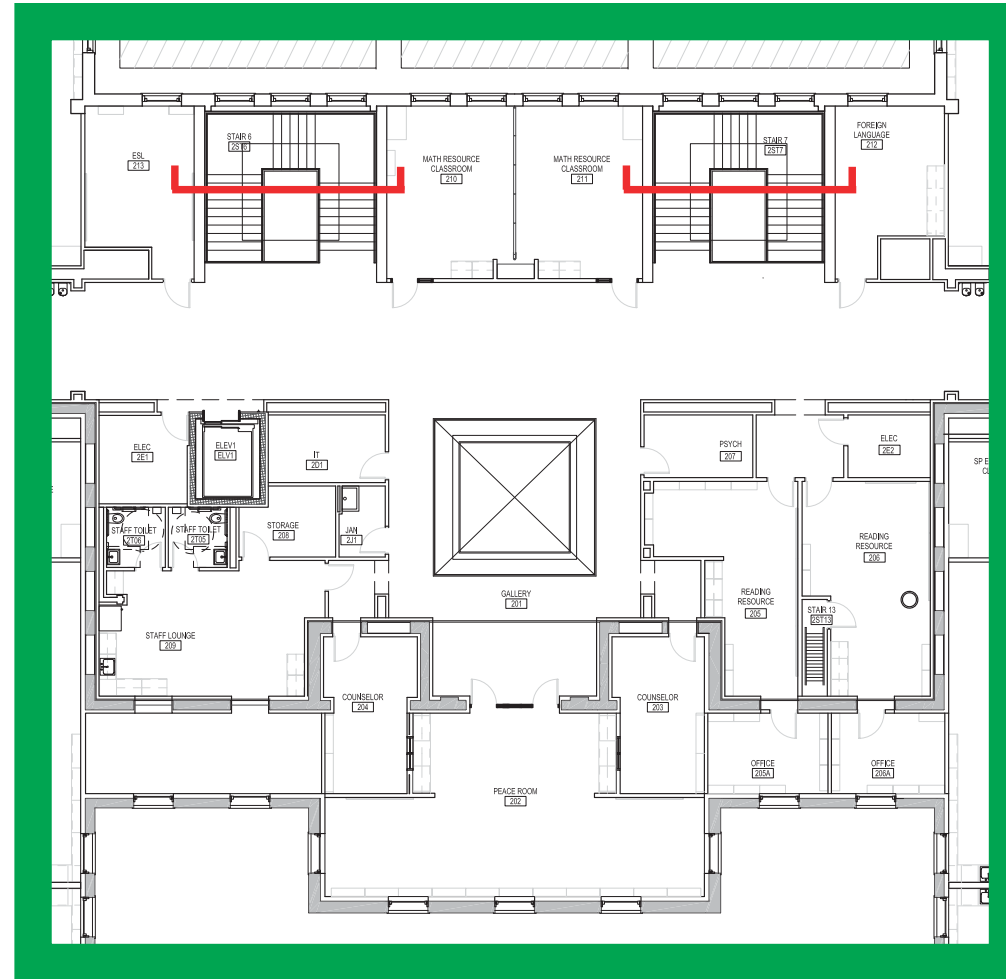
Location: Multi-Level

Max. Dimensions: 6'-0"W x 10'-0"L x 38'-0"T

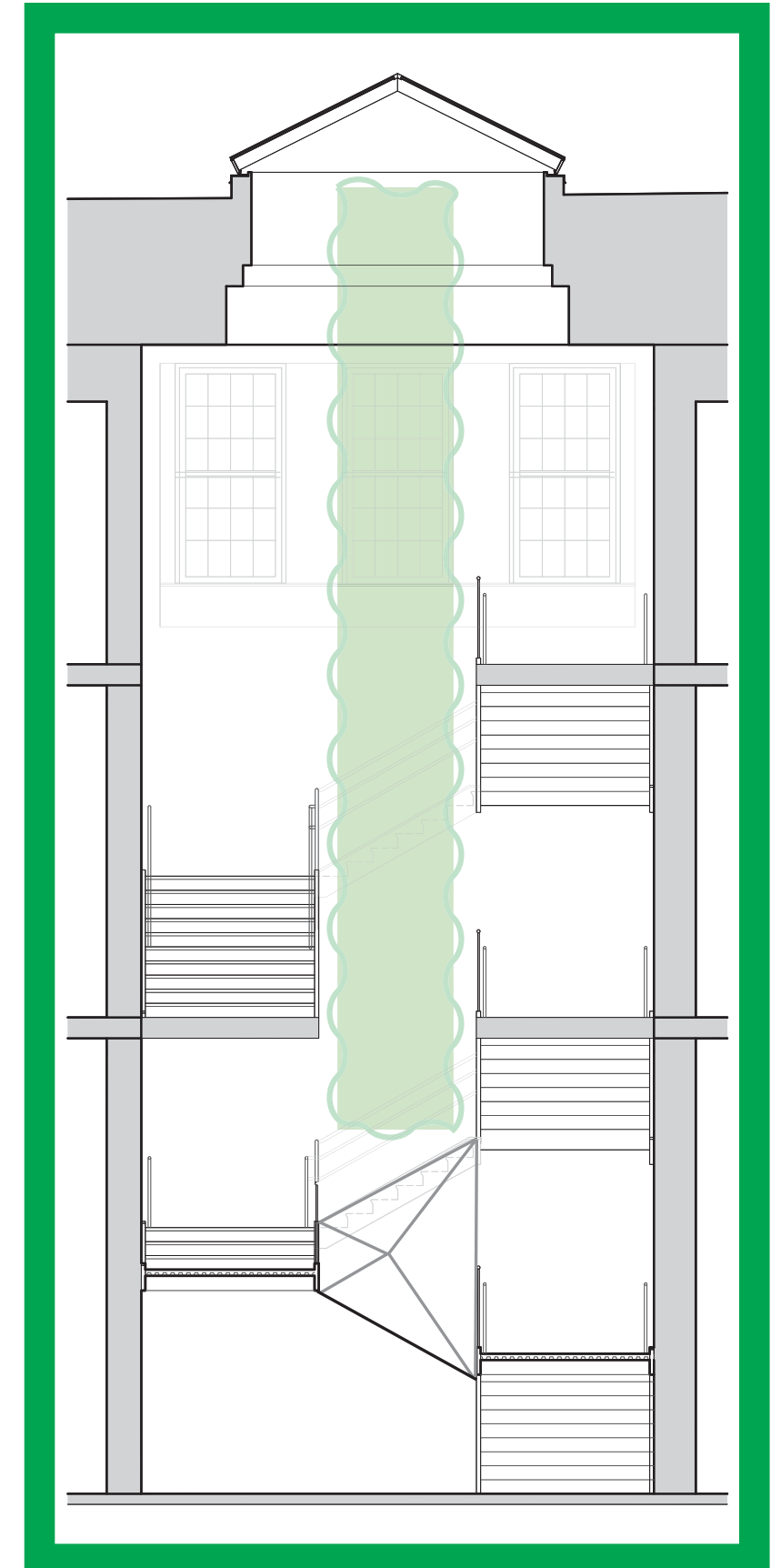
Material: translucent glass /acrylic

Color: Multi-colored

There are two suspended works for the stairwells- they should be long, vertical, and make use of the abundant natural light in each stairwell. A geometric, obelisk-like structure exists at the bottom of both stairs, about three feet tall above the lower level finished floor. These can be tied into the art if desired. Both stairwell art pieces should relate to each other within a broader theme (ie. Nature or Seasons).

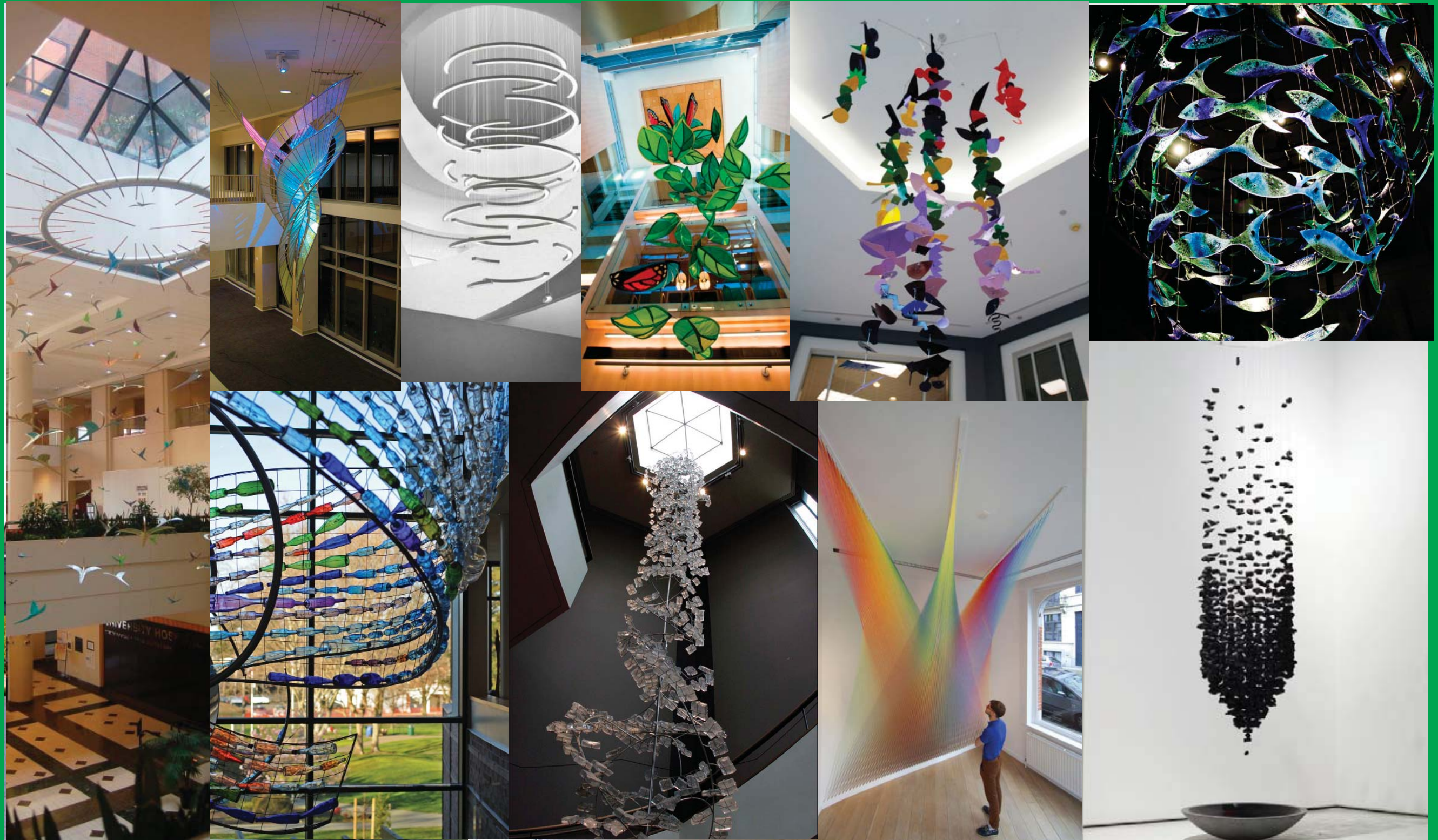


earth  
translucent  
abstract  
fused glass  
acrylic  
natural  
growth  
colorful  
playful  
kinetic  
non-representational



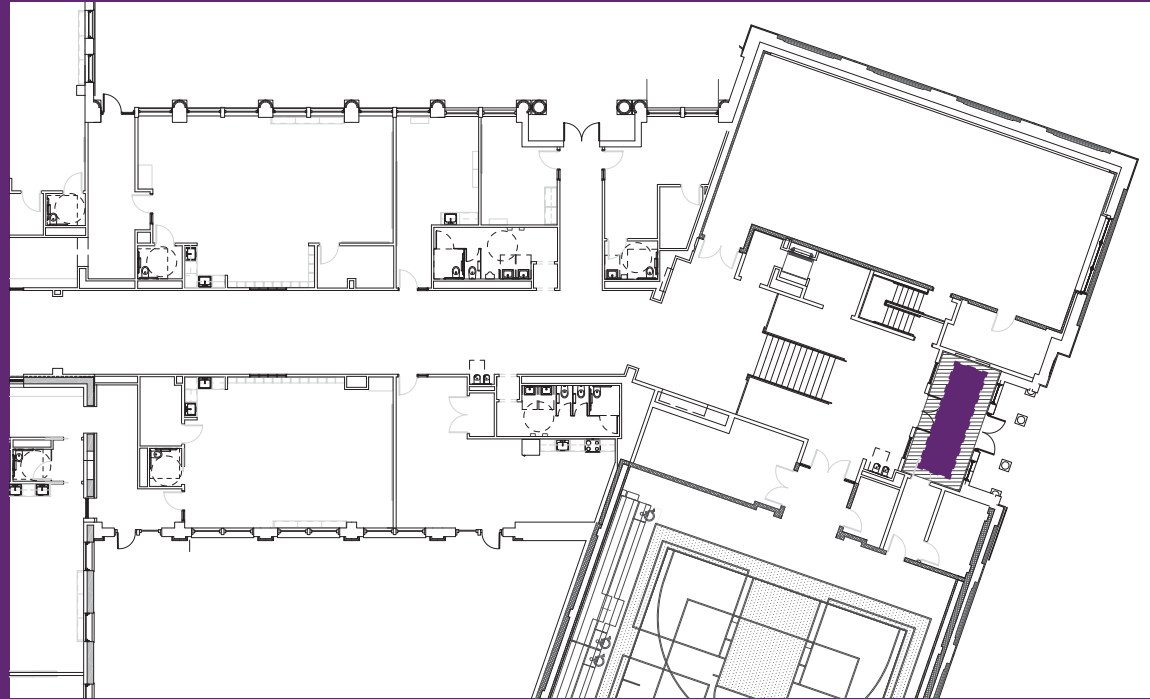


# Inspiration





## 8. SOUTH GYM ENTRY



Installation type:  
Suspended 3D artwork  
Location: 1st Floor  
Max. Dimensions: 10'-0"W  
x 21'-0"L x 7'-0"H  
Material: flat metal cutout,  
or resin  
Color: Multi-color or  
Monochromatic

fitness

play

strength

movement

agility

### Inspiration

