

# LAFAYETTE ELEMENTARY SCHOOL

## A SCHOOL ON THE PARK



LAFAYETTE ELEMENTARY SCHOOL SIT MEETING – SEPTEMBER 22, 2014



**LAFAYETTE ELEMENTARY SCHOOL**

HARTMAN-COX ARCHITECTS / GRIMM + PARKER ARCHITECTS  
202.333.6446 / 301.595.1000

## AGENDA –SIT MEETING #6

---

- |                          |            |             |
|--------------------------|------------|-------------|
| • DGS Update             | 10 minutes | 6:00 – 6:10 |
| • Floor Plan Update      | 40 minutes | 6:10 – 6:50 |
| • Massing and Elevations | 30 minutes | 6:50 – 7:20 |
| • Wrap Up                | 10 minutes | 7:20 – 7:30 |

LAFAYETTE ELEMENTARY SCHOOL SIT MEETING – SEPTEMBER 22, 2014



**LAFAYETTE ELEMENTARY SCHOOL**

HARTMAN-COX ARCHITECTS / GRIMM + PARKER ARCHITECTS  
202.333.6446 / 301.595.1000

# SITE PLAN

## LAFAYETTE ELEMENTARY SCHOOL SCHEMATIC DESIGN



LAFAYETTE ELEMENTARY SCHOOL SIT MEETING – SEPTEMBER 22, 2014



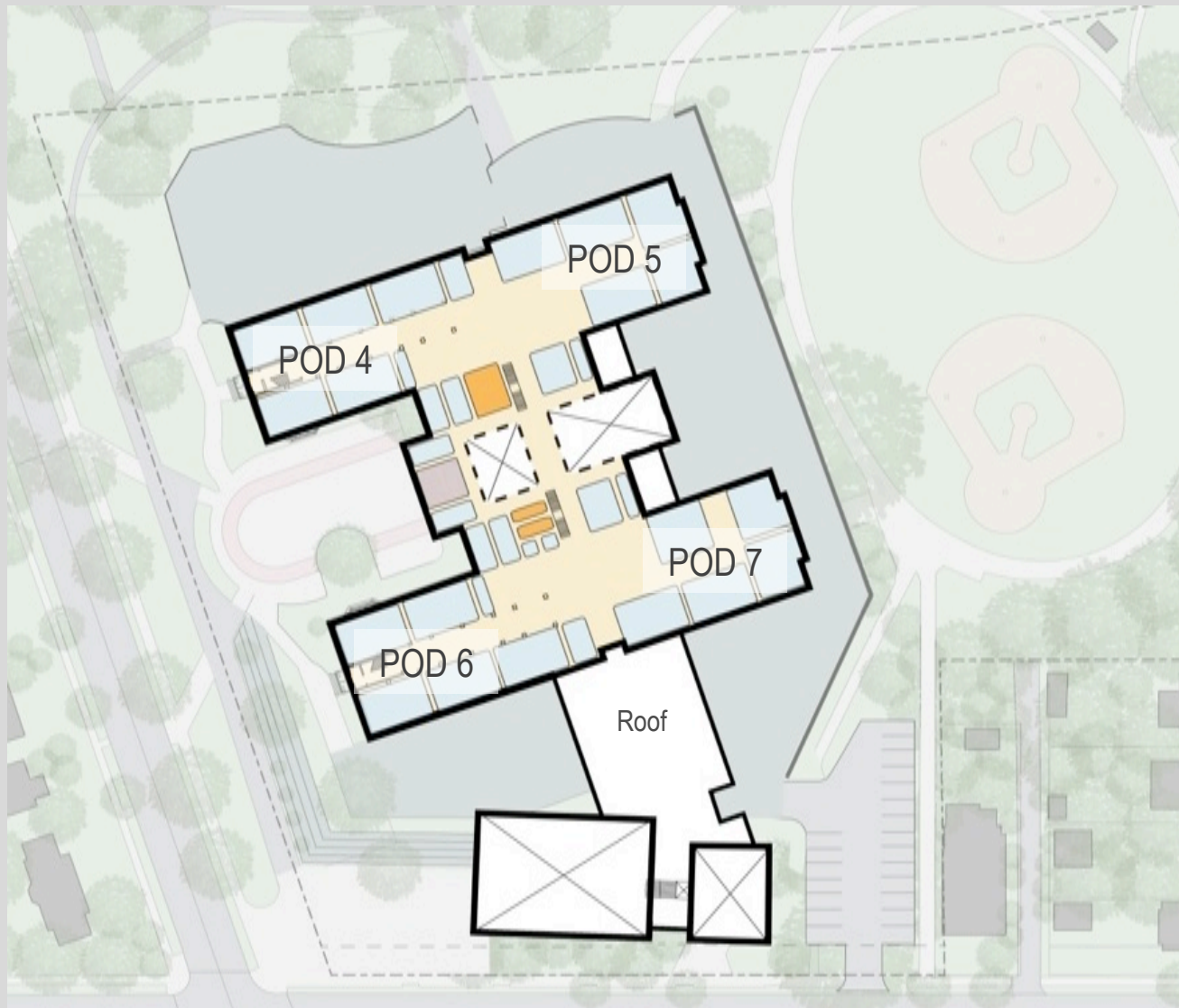
### LAFAYETTE ELEMENTARY SCHOOL

HARTMAN-COX ARCHITECTS / GRIMM + PARKER ARCHITECTS  
202.333.6446 / 301.595.1000



# SECOND FLOOR

LAFAYETTE ELEMENTARY SCHOOL – SCHEMATIC DESIGN  
OVERALL FLOOR PLAN



LAFAYETTE ELEMENTARY SCHOOL SIT MEETING – SEPTEMBER 22, 2014

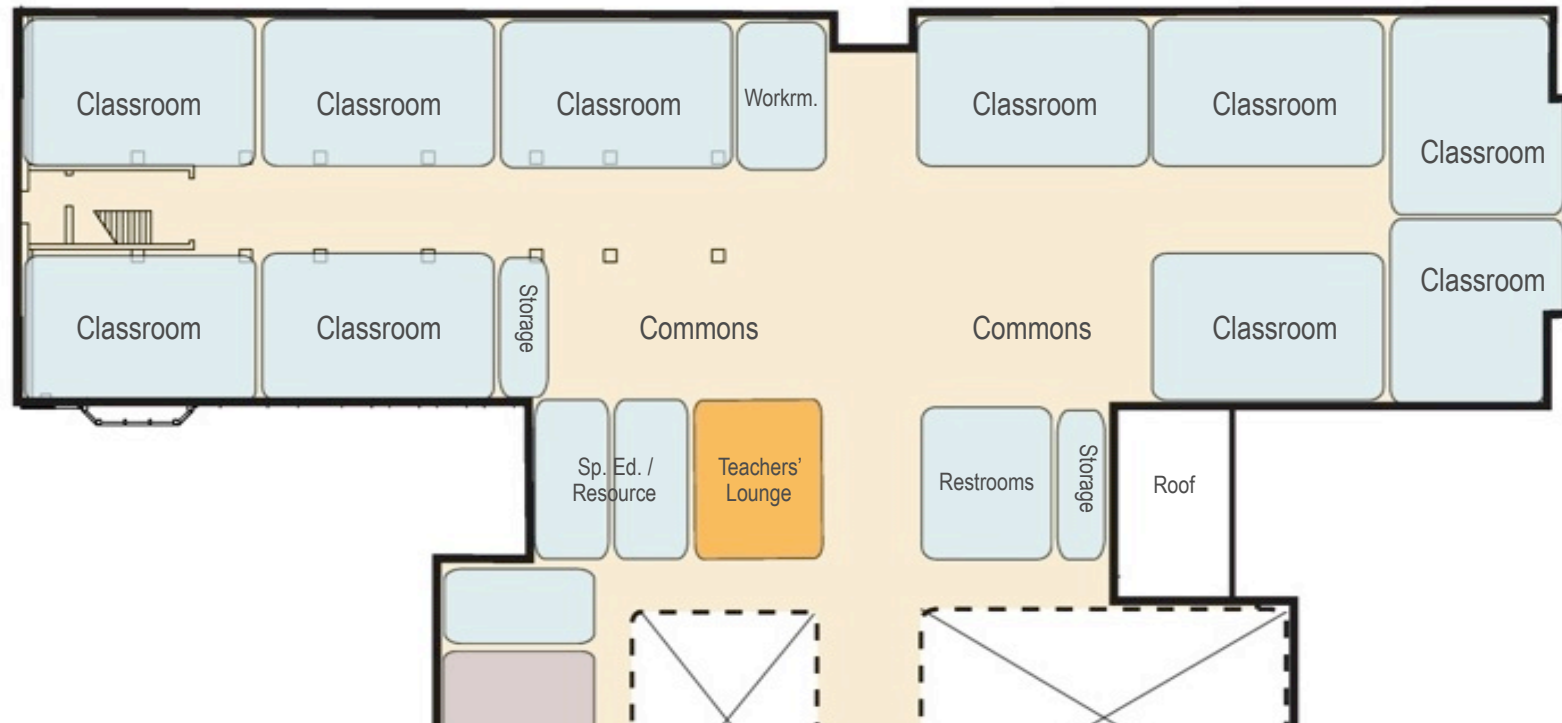


**LAFAYETTE ELEMENTARY SCHOOL**

HARTMAN-COX ARCHITECTS / GRIMM + PARKER ARCHITECTS  
202.333.6446 / 301.595.1000

# SECOND FLOOR

LAFAYETTE ELEMENTARY SCHOOL – SCHEMATIC DESIGN  
ENLARGED PLAN – TYPICAL ACADEMIC CLUSTER



LAFAYETTE ELEMENTARY SCHOOL SIT MEETING – SEPTEMBER 22, 2014

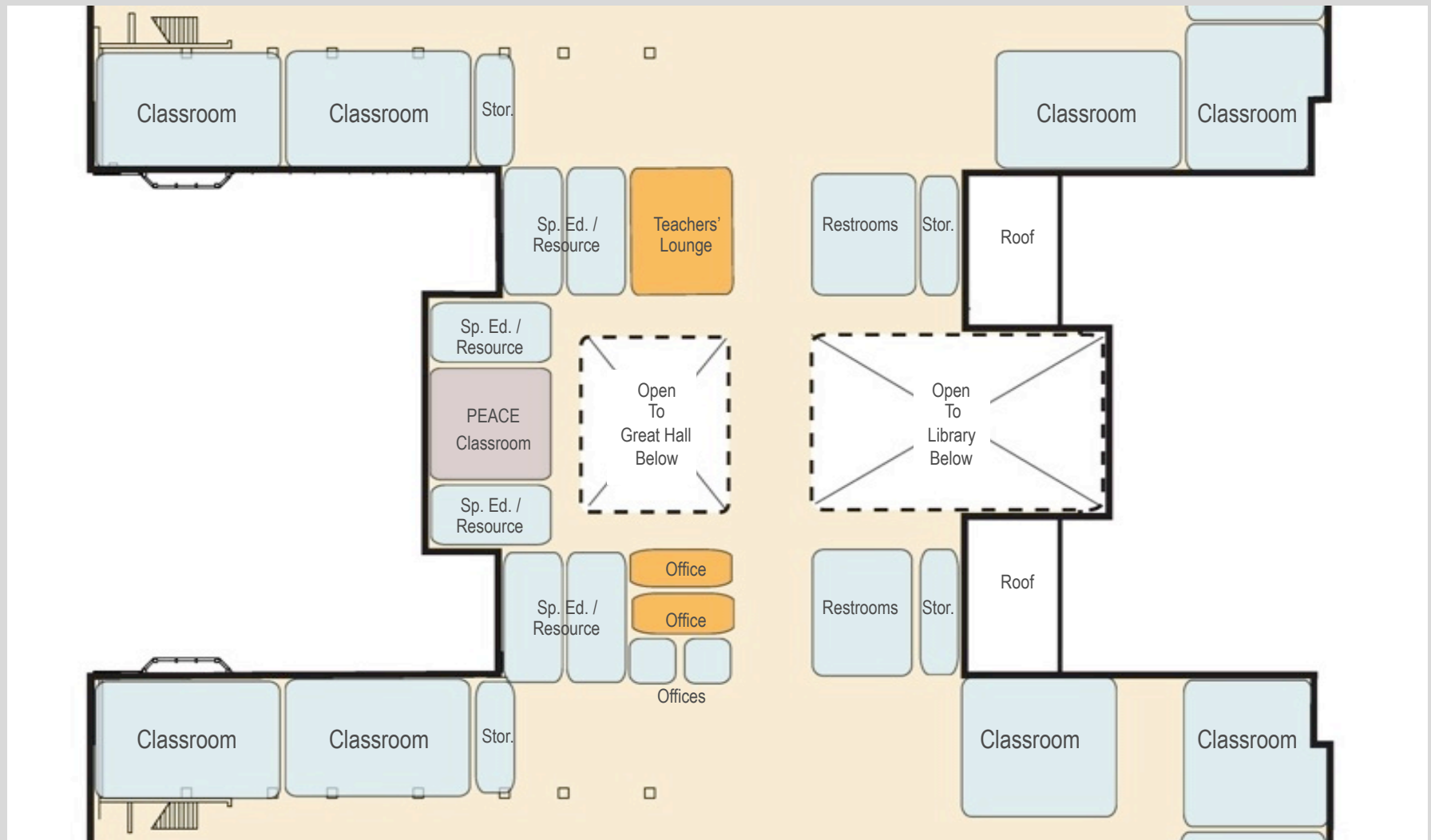


**LAFAYETTE ELEMENTARY SCHOOL**

HARTMAN-COX ARCHITECTS / GRIMM + PARKER ARCHITECTS  
202.333.6446 / 301.595.1000

# SECOND FLOOR

LAFAYETTE ELEMENTARY SCHOOL – SCHEMATIC DESIGN  
ENLARGED PLAN – CENTRAL AREA



LAFAYETTE ELEMENTARY SCHOOL SIT MEETING – SEPTEMBER 22, 2014



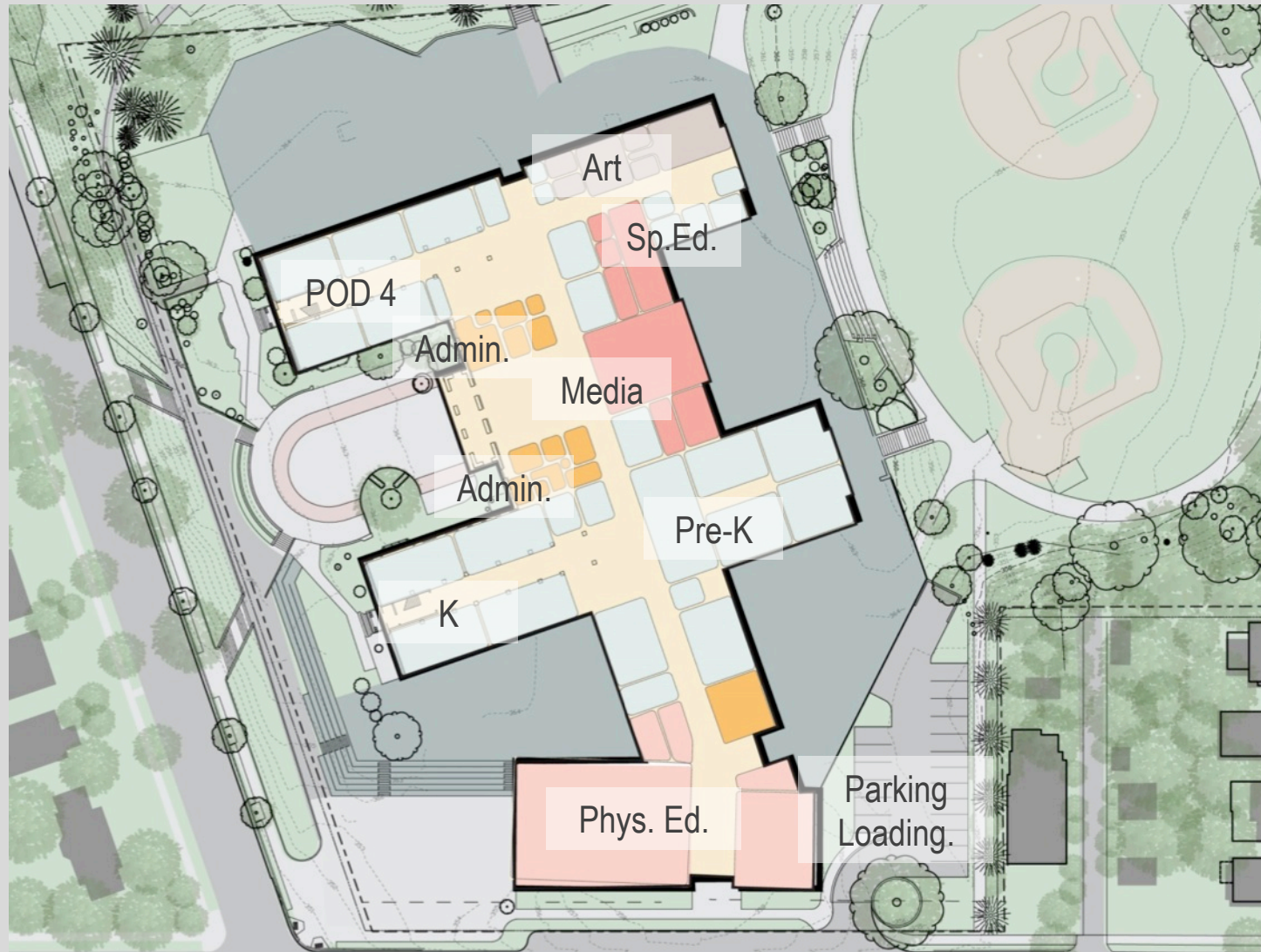
**LAFAYETTE ELEMENTARY SCHOOL**

HARTMAN-COX ARCHITECTS / GRIMM + PARKER ARCHITECTS  
202.333.6446 / 301.595.1000



# FIRST FLOOR

## LAFAYETTE ELEMENTARY SCHOOL – SCHEMATIC DESIGN OVERALL FLOOR PLAN



LAFAYETTE ELEMENTARY SCHOOL SIT MEETING – SEPTEMBER 22, 2014

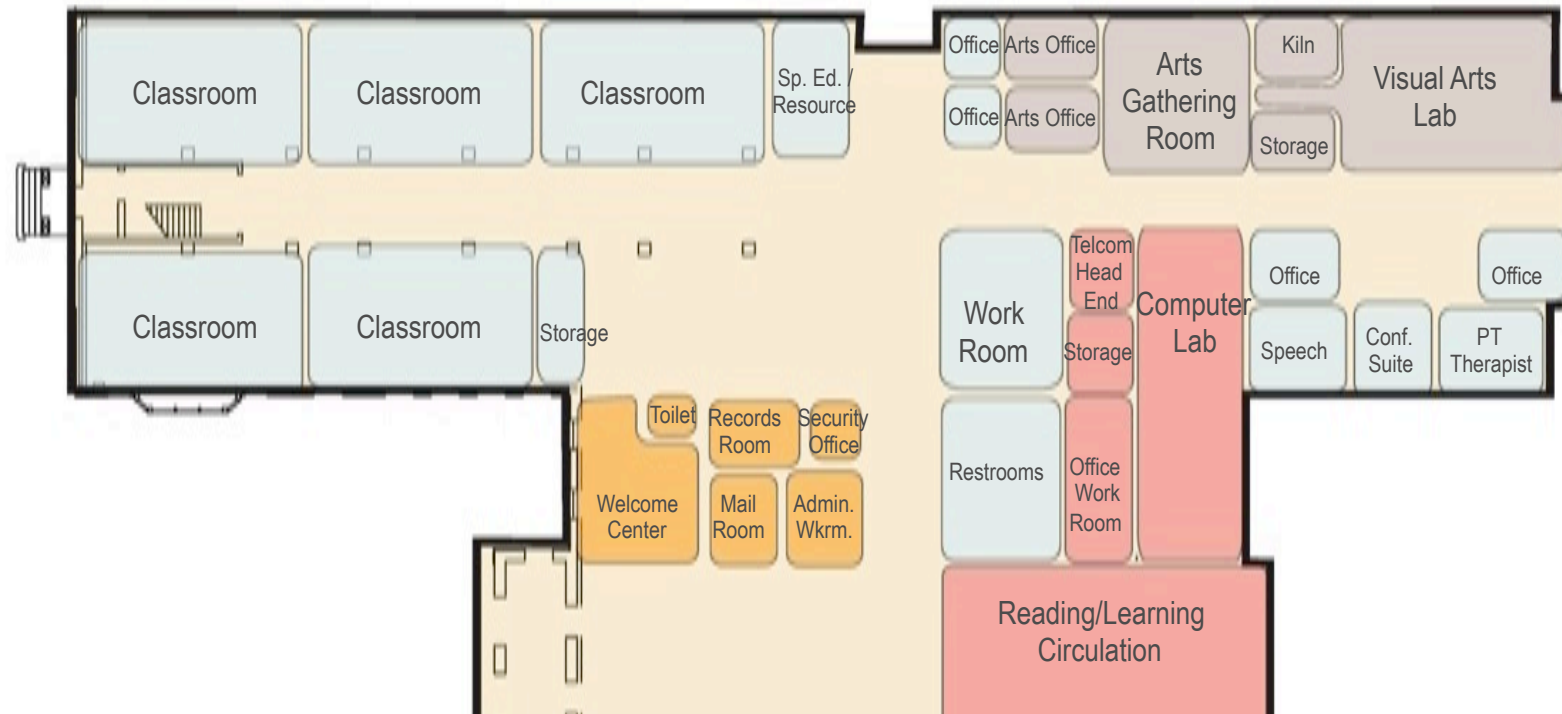


**LAFAYETTE ELEMENTARY SCHOOL**

HARTMAN-COX ARCHITECTS / GRIMM + PARKER ARCHITECTS  
202.333.6446 / 301.595.1000

# FIRST FLOOR

## LAFAYETTE ELEMENTARY SCHOOL – SCHEMATIC DESIGN ENLARGED PLAN – NORTH WING



LAFAYETTE ELEMENTARY SCHOOL SIT MEETING – SEPTEMBER 22, 2014



**LAFAYETTE ELEMENTARY SCHOOL**

HARTMAN-COX ARCHITECTS / GRIMM + PARKER ARCHITECTS  
202.333.6446 / 301.595.1000



# FIRST FLOOR

LAFAYETTE ELEMENTARY SCHOOL – SCHEMATIC DESIGN  
ENLARGED PLAN – CENTRAL AREA



LAFAYETTE ELEMENTARY SCHOOL SIT MEETING – SEPTEMBER 22, 2014

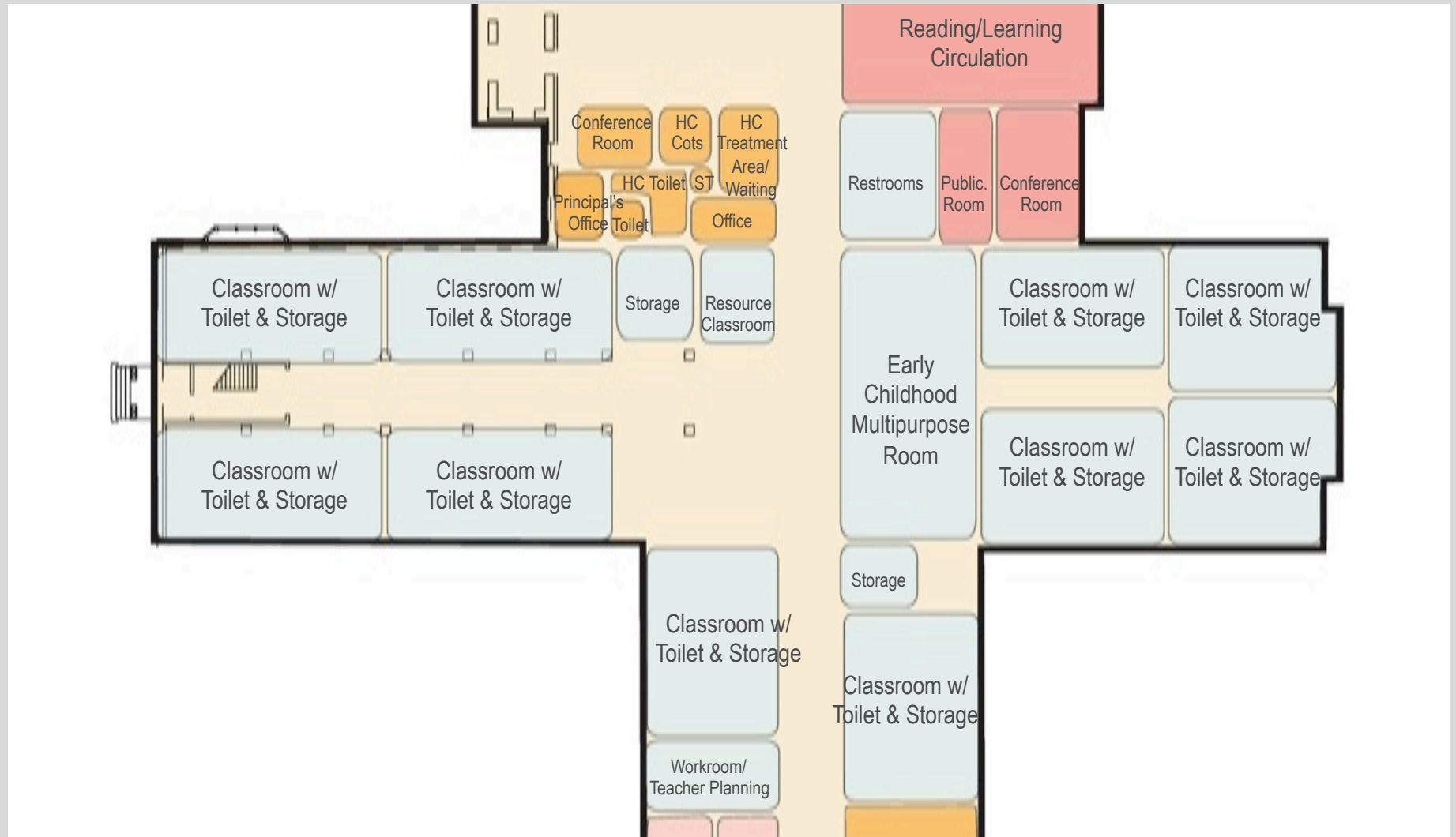


LAFAYETTE ELEMENTARY SCHOOL

HARTMAN-COX ARCHITECTS / GRIMM + PARKER ARCHITECTS  
202.333.6446 / 301.595.1000

# FIRST FLOOR

## LAFAYETTE ELEMENTARY SCHOOL – SCHEMATIC DESIGN ENLARGED PLAN – EARLY CHILDHOOD EDUCATION SUITES



LAFAYETTE ELEMENTARY SCHOOL SIT MEETING – SEPTEMBER 22, 2014

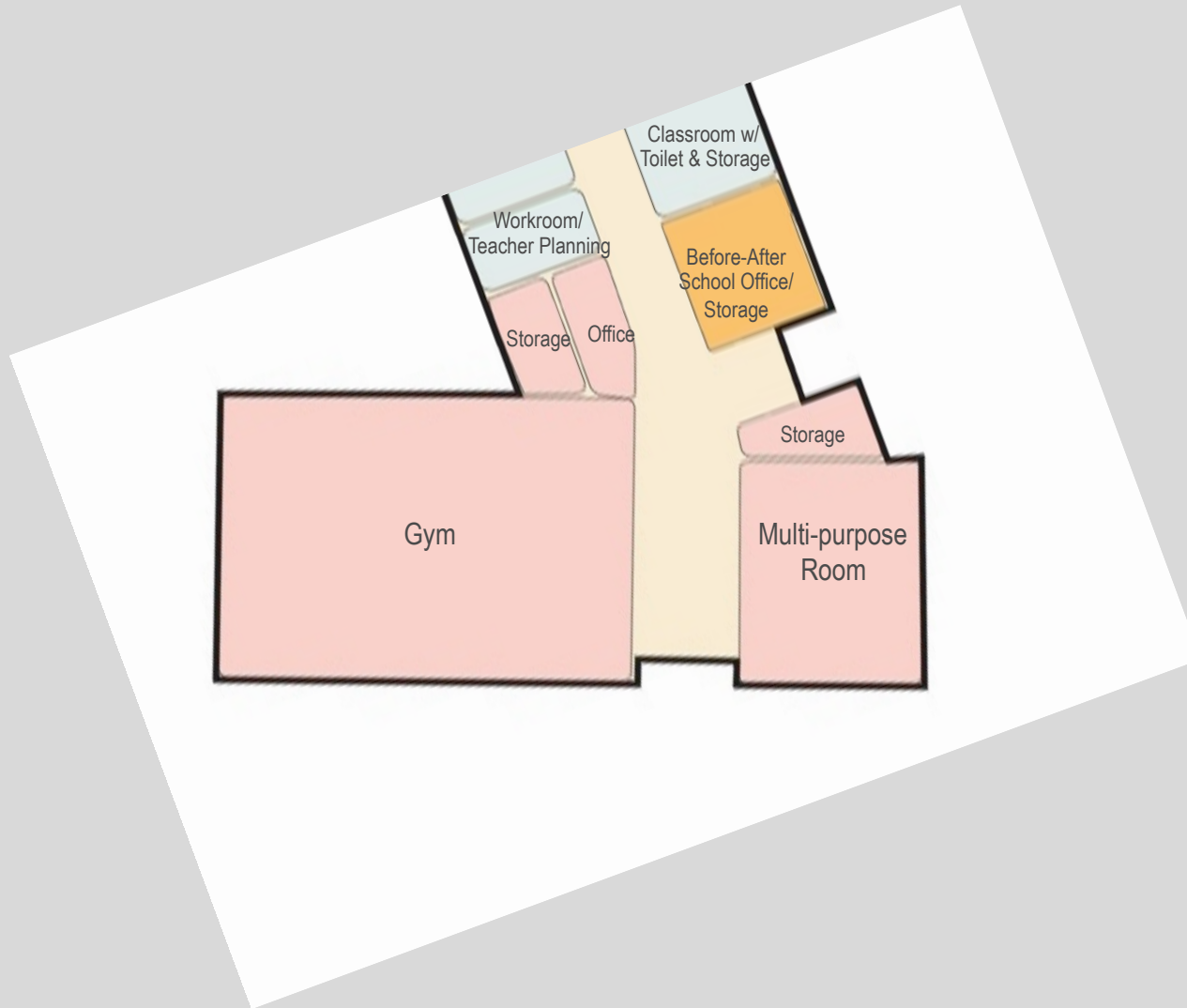


**LAFAYETTE ELEMENTARY SCHOOL**

HARTMAN-COX ARCHITECTS / GRIMM + PARKER ARCHITECTS  
202.333.6446 / 301.595.1000

# FIRST FLOOR

LAFAYETTE ELEMENTARY SCHOOL – SCHEMATIC DESIGN  
ENLARGED PLAN – NORTHAMPTON WING



LAFAYETTE ELEMENTARY SCHOOL SIT MEETING – SEPTEMBER 22, 2014

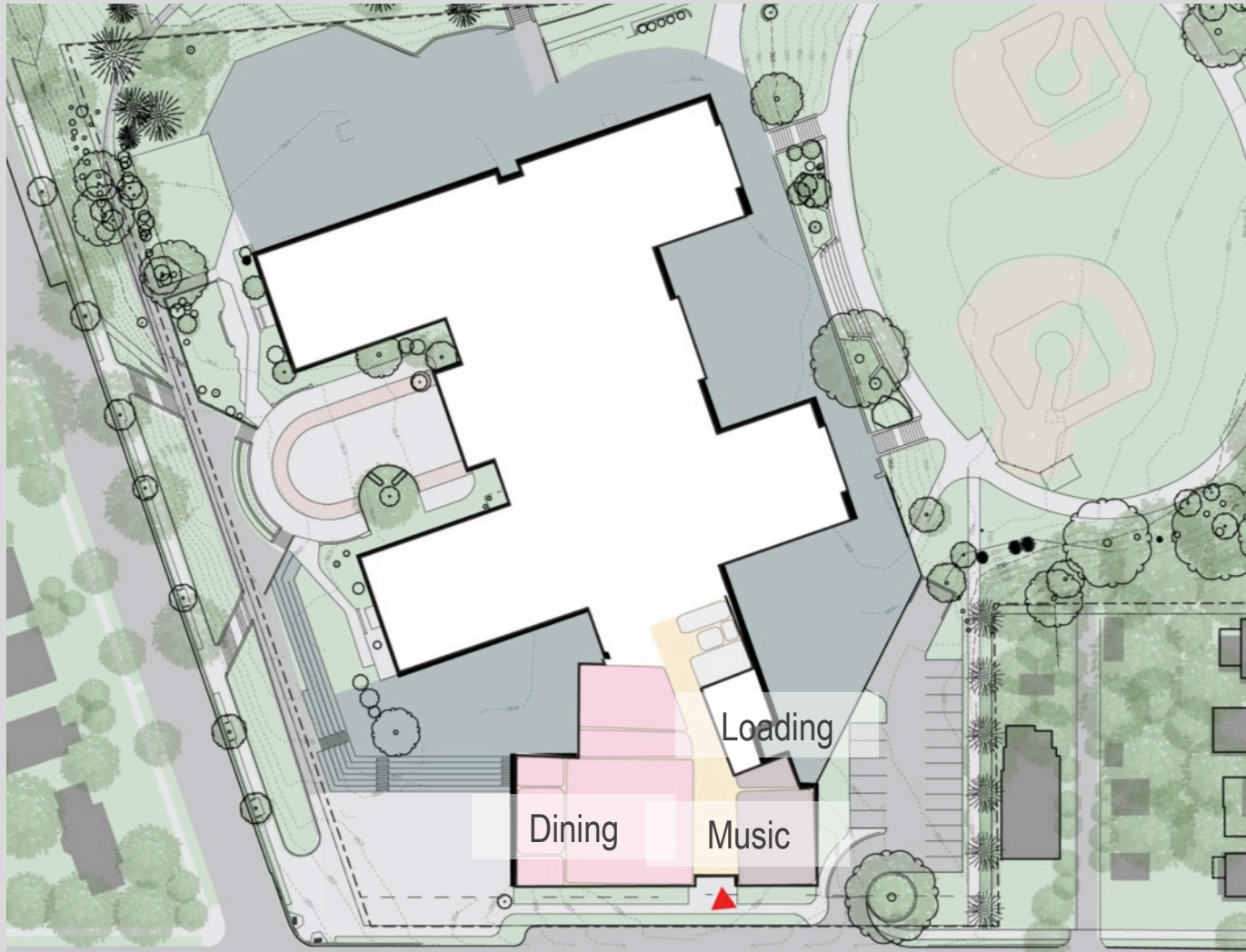


**LAFAYETTE ELEMENTARY SCHOOL**

HARTMAN-COX ARCHITECTS / GRIMM + PARKER ARCHITECTS  
202.333.6446 / 301.595.1000

# GROUND FLOOR

## LAFAYETTE ELEMENTARY SCHOOL – SCHEMATIC DESIGN OVERALL FLOOR PLAN



LAFAYETTE ELEMENTARY SCHOOL SIT MEETING – SEPTEMBER 22, 2014



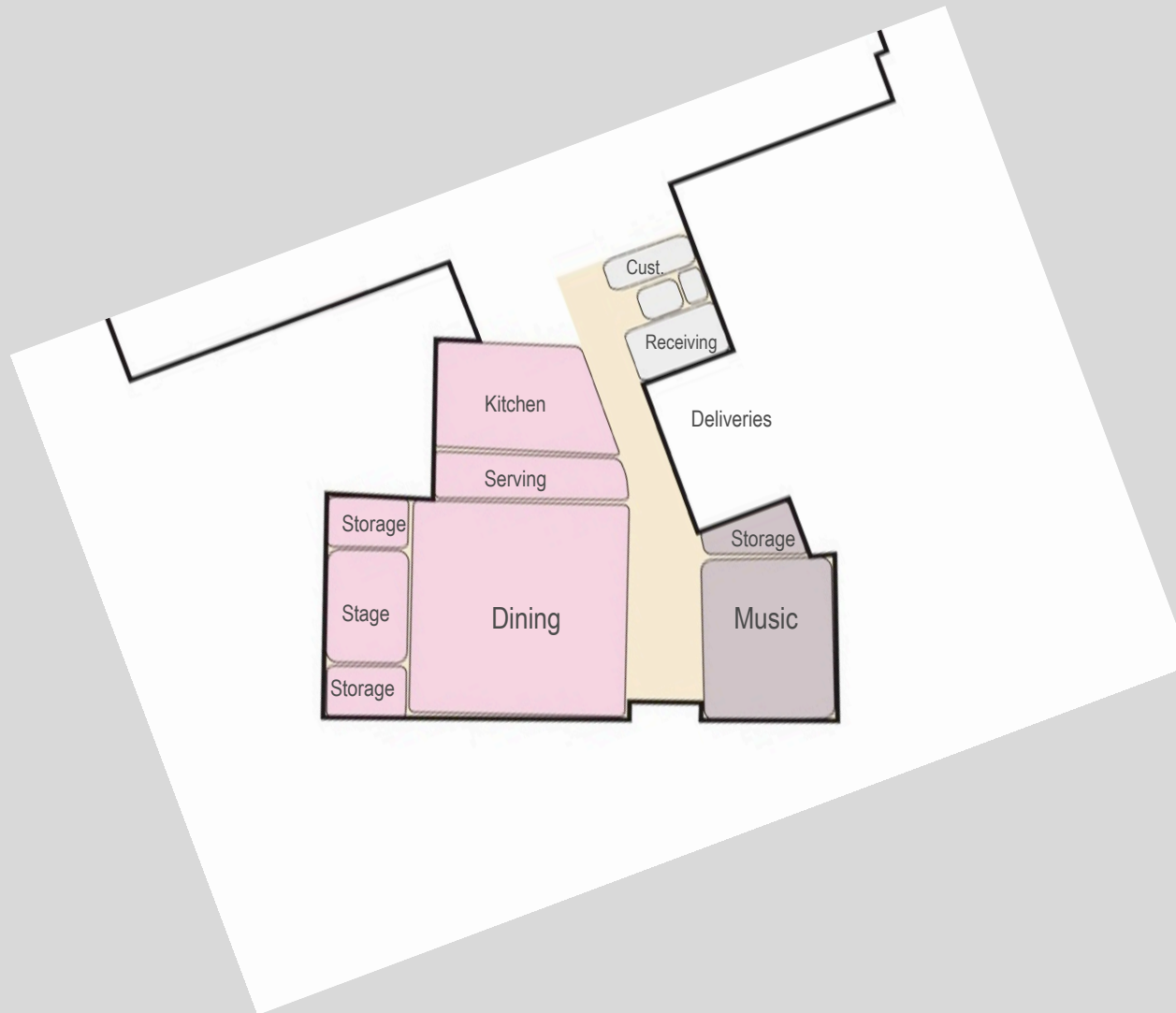
**LAFAYETTE ELEMENTARY SCHOOL**

HARTMAN-COX ARCHITECTS / GRIMM + PARKER ARCHITECTS  
202.333.6446 / 301.595.1000



# GROUND FLOOR

LAFAYETTE ELEMENTARY SCHOOL – SCHEMATIC DESIGN  
ENLARGED PLAN – NORTHAMPTON WING



LAFAYETTE ELEMENTARY SCHOOL SIT MEETING – SEPTEMBER 22, 2014

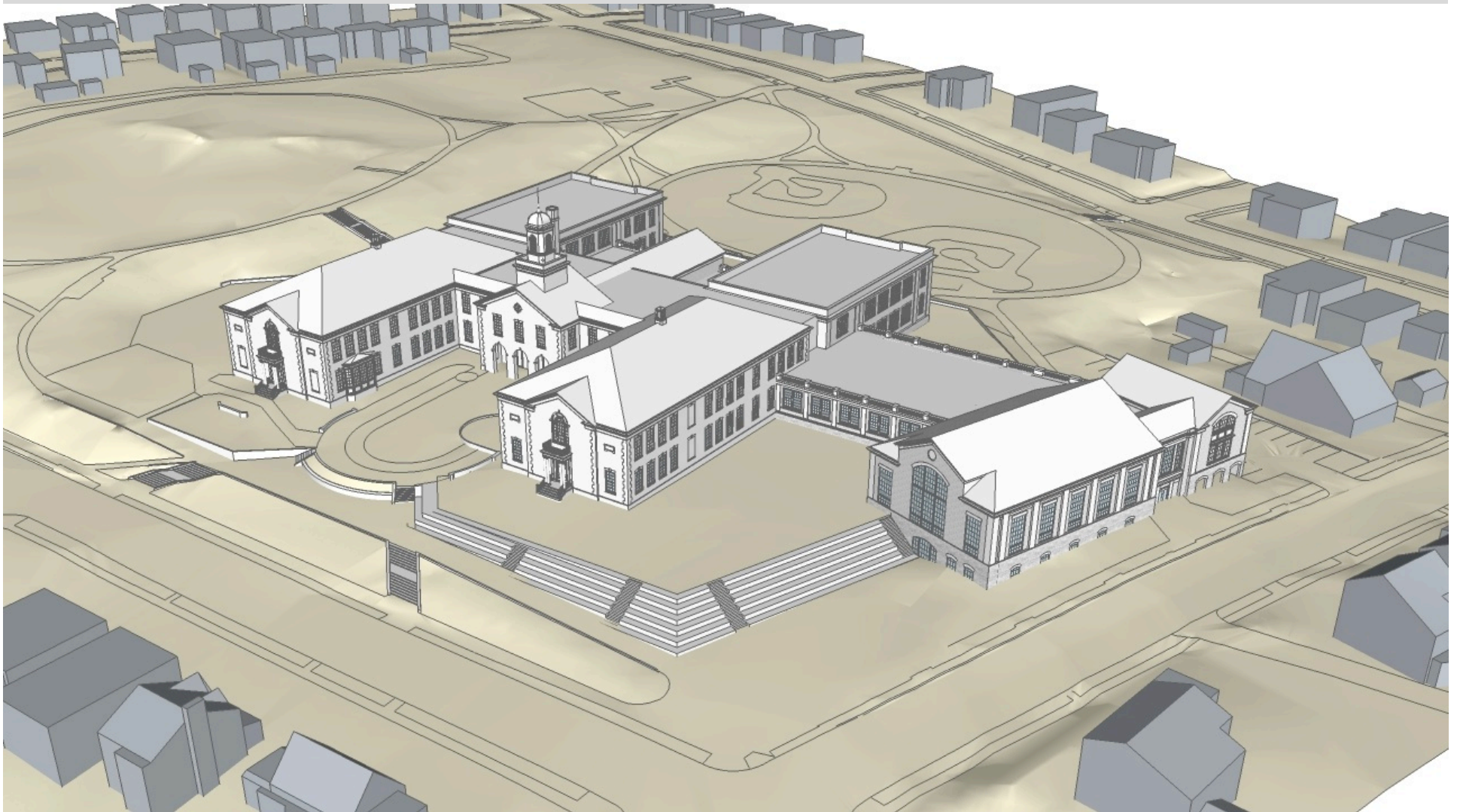


**LAFAYETTE ELEMENTARY SCHOOL**

HARTMAN-COX ARCHITECTS / GRIMM + PARKER ARCHITECTS  
202.333.6446 / 301.595.1000

# Schematic Massing – Southwest Aerial View

---



LAFAYETTE ELEMENTARY SCHOOL SIT MEETING – SEPTEMBER 22, 2014



**LAFAYETTE ELEMENTARY SCHOOL**

HARTMAN-COX ARCHITECTS / GRIMM + PARKER ARCHITECTS  
202.333.6446 / 301.595.1000



# Schematic Massing – Southeast Aerial View



LAFAYETTE ELEMENTARY SCHOOL SIT MEETING – SEPTEMBER 22, 2014

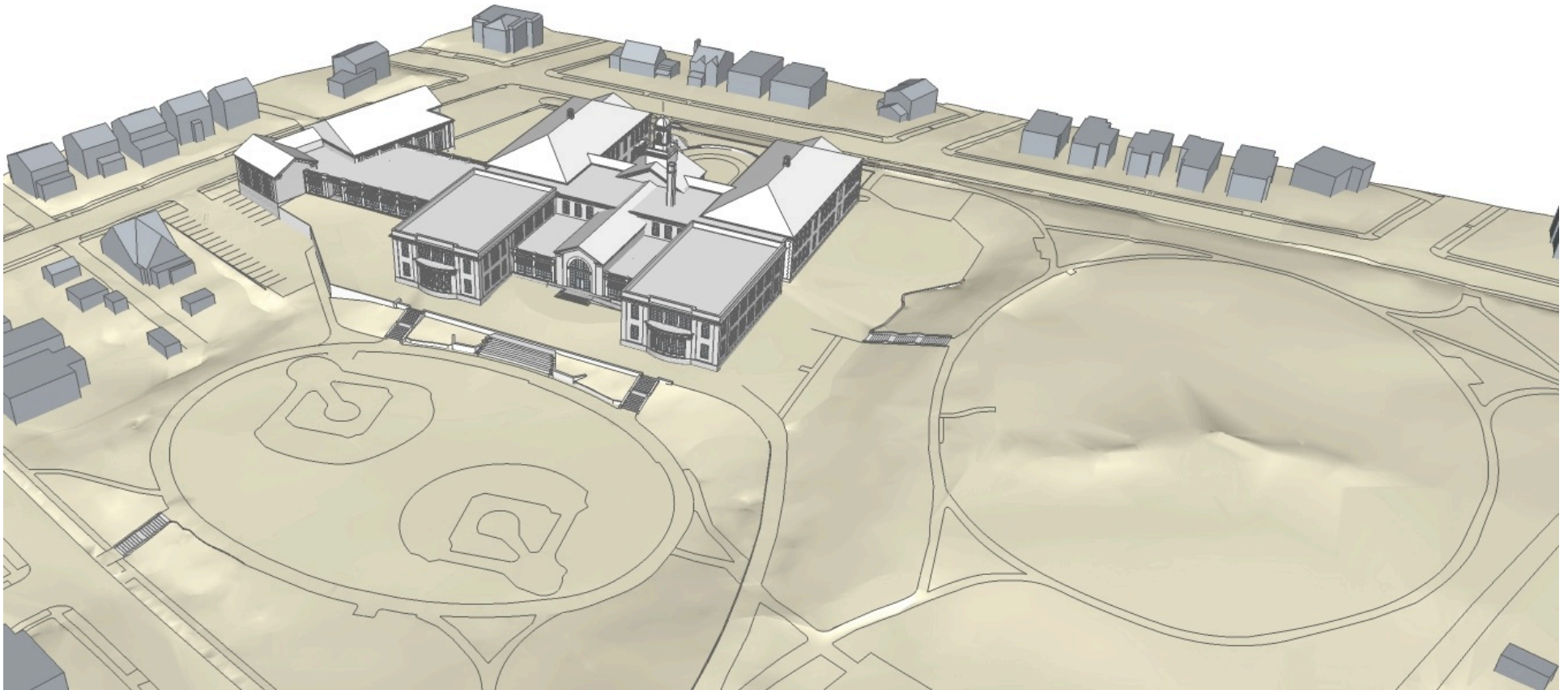


**LAFAYETTE ELEMENTARY SCHOOL**

HARTMAN-COX ARCHITECTS / GRIMM + PARKER ARCHITECTS  
202.333.6446 / 301.595.1000

# Schematic Massing – Northeast Aerial View

---



LAFAYETTE ELEMENTARY SCHOOL SIT MEETING – SEPTEMBER 22, 2014



**LAFAYETTE ELEMENTARY SCHOOL**

HARTMAN-COX ARCHITECTS / GRIMM + PARKER ARCHITECTS  
202.333.6446 / 301.595.1000



# Schematic Massing – Park Approach

---



LAFAYETTE ELEMENTARY SCHOOL SIT MEETING – SEPTEMBER 22, 2014



**LAFAYETTE ELEMENTARY SCHOOL**

HARTMAN-COX ARCHITECTS / GRIMM + PARKER ARCHITECTS  
202.333.6446 / 301.595.1000

# Schematic Massing – Park Approach

---



LAFAYETTE ELEMENTARY SCHOOL SIT MEETING – SEPTEMBER 22, 2014



**LAFAYETTE ELEMENTARY SCHOOL**

HARTMAN-COX ARCHITECTS / GRIMM + PARKER ARCHITECTS  
202.333.6446 / 301.595.1000

# Schematic Massing – From Ball Fields

---



LAFAYETTE ELEMENTARY SCHOOL SIT MEETING – SEPTEMBER 22, 2014



**LAFAYETTE ELEMENTARY SCHOOL**

HARTMAN-COX ARCHITECTS / GRIMM + PARKER ARCHITECTS  
202.333.6446 / 301.595.1000

# Schematic Massing – From Ball Fields

---



LAFAYETTE ELEMENTARY SCHOOL SIT MEETING – SEPTEMBER 22, 2014



**LAFAYETTE ELEMENTARY SCHOOL**

HARTMAN-COX ARCHITECTS / GRIMM + PARKER ARCHITECTS  
202.333.6446 / 301.595.1000



# Schematic Massing – From Fields (Southeast)

---



LAFAYETTE ELEMENTARY SCHOOL SIT MEETING – SEPTEMBER 22, 2014



**LAFAYETTE ELEMENTARY SCHOOL**

HARTMAN-COX ARCHITECTS / GRIMM + PARKER ARCHITECTS  
202.333.6446 / 301.595.1000

# Schematic Massing – From Fields (Southeast)

---



LAFAYETTE ELEMENTARY SCHOOL SIT MEETING – SEPTEMBER 22, 2014

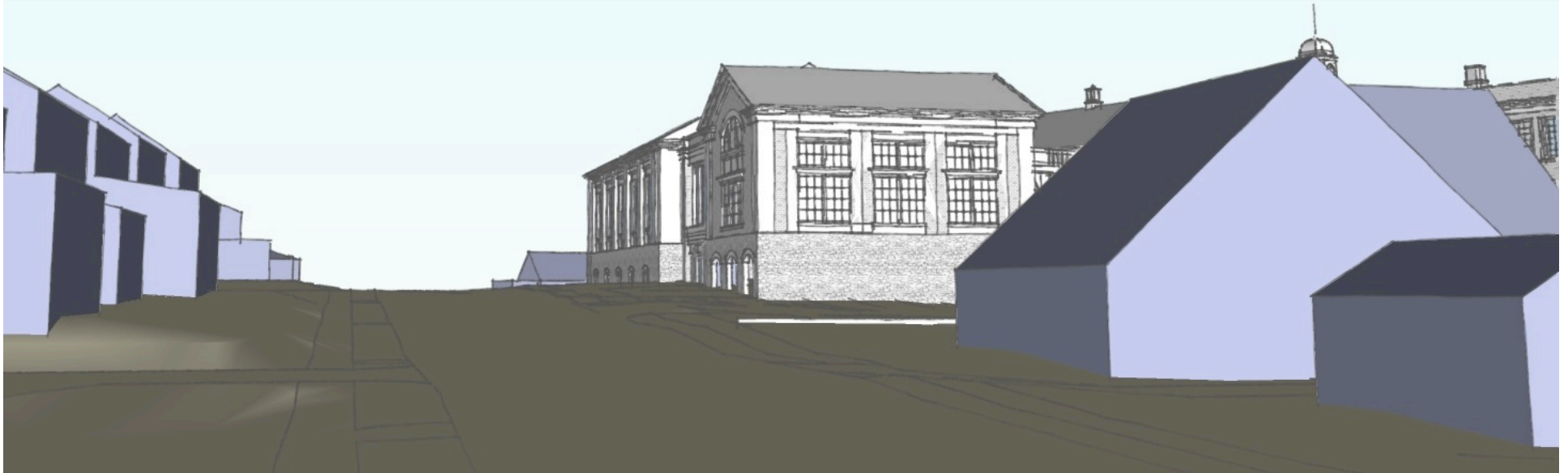


**LAFAYETTE ELEMENTARY SCHOOL**

HARTMAN-COX ARCHITECTS / GRIMM + PARKER ARCHITECTS  
202.333.6446 / 301.595.1000

# Schematic Massing – From Westbound Northampton St.

---



LAFAYETTE ELEMENTARY SCHOOL SIT MEETING – SEPTEMBER 22, 2014



**LAFAYETTE ELEMENTARY SCHOOL**

HARTMAN-COX ARCHITECTS / GRIMM + PARKER ARCHITECTS  
202.333.6446 / 301.595.1000

# Schematic Massing – From Eastbound Northampton St.

---



LAFAYETTE ELEMENTARY SCHOOL SIT MEETING – SEPTEMBER 22, 2014



**LAFAYETTE ELEMENTARY SCHOOL**

HARTMAN-COX ARCHITECTS / GRIMM + PARKER ARCHITECTS  
202.333.6446 / 301.595.1000



# LAFAYETTE ELEMENTARY SCHOOL

## A SCHOOL ON THE PARK



LAFAYETTE ELEMENTARY SCHOOL SIT MEETING – SEPTEMBER 22, 2014



**LAFAYETTE ELEMENTARY SCHOOL**

HARTMAN-COX ARCHITECTS / GRIMM + PARKER ARCHITECTS  
202.333.6446 / 301.595.1000