



# Lafayette Recreation Center Community Meeting # 9 October 29, 2019

# AGENDA

1. Welcome and Introductions
2. Project Recap
3. Updated Site Plan
4. Stormwater Management
5. Lighting
6. Staging and Logistics
7. Construction Schedule
8. General Concerns / Questions & Answers
9. Project Points of Contact

# PROJECT RECAP

## Project Budget

Recreation Center \$4.6M

Stormwater Management \$1.0M

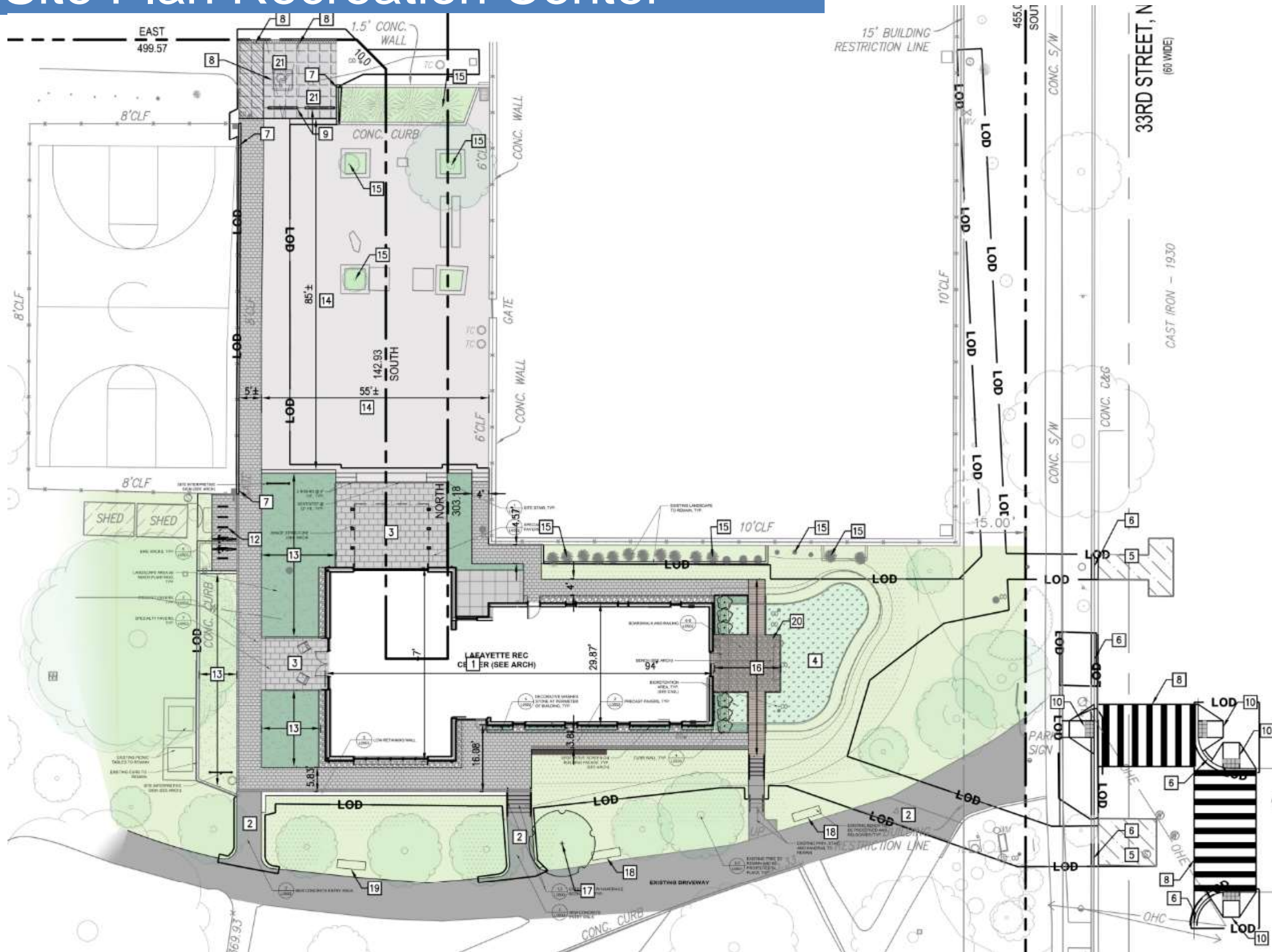
# PROJECT RECAP

## Community Meetings



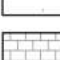
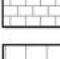
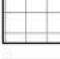



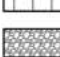
1. Oct 26, 2017 – Project Introduction
2. Jan 17, 2018 – Community Survey Review
3. July 11, 2018 – First Concept Review
4. Sep 12, 2018 – Continued Concept Review
5. Nov 29, 2018 – Continued Concept Review
6. Apr 9, 2019 – Continued Concept Review
7. May 14, 2019 – Stormwater Charrette
8. July 10, 2019 – Final Recreation Center Design Review
9. October 29, 2019 – Preconstruction Meeting



# Site Plan Recreation Center



### PAVING LEGEND

	NEW ASPHALT PAVEMENT (SURFACE COURSE)
	NEW ASPHALT PAVEMENT (FULL DEPTH)
	NEW CONCRETE PAVEMENT
	NEW PAVER SIDEWALK
	NEW SCORED CONCRETE SIDEWALK
	NEW RAISED WOOD WALKWAY
	NEW BIORETENTION POND
	NEW POROUS PAVEMENT
	NEW STONE BED

SITE KEYNOTES:

- 1 NEW BUILDING.
- 2 NEW CONCRETE PAVEMENT. SEE ARCHITECTURE DRAWINGS FOR DETAILS.
- 3 NEW COVERED PORCH AREA. TILES TO MATCH INTERIOR MULTI-PURPOSE ROOM. SEE ARCHITECTURE DRAWINGS FOR DETAILS.
- 4 NEW BIORETENTION AREA. SEE DETAILS ON CIV0703.
- 5 NEW PAVEMENT. SEE DETAIL ON SHEET CIV0502.
- 6 NEW CONCRETE CURB AND GUTTER. SEE STANDARD DDOT DETAIL 606.01 ON SHEET CIV0502.
- 7 NEW 6" CONCRETE CURB. SEE STANDARD DETAIL ON SHEET CIV0502.
- 8 NEW PAVEMENT MARKING.
- 9 NEW PRECAST CONCRETE WHEEL STOP. SEE DETAIL ON SHEET CIV0502.
- 10 NEW ADA RAMP. SEE DETAIL ON SHEET CIV0502 FOR DETAILS.
- 11 APPROXIMATE LOCATION OF NEW 53'X6' CAPITAL BIKESHARE STATION.
- 12 12 NEW BIKE RACK SPACES. SEE LANDSCAPE DRAWINGS FOR DETAILS.
- 13 NEW GRASS AREA.
- 14 EXISTING CONCRETE AREA TO REMAIN.
- 15 EXISTING TREES TO REMAIN.
- 16 NEW RAISED WOOD WALKWAY. SEE LANDSCAPE DRAWINGS FOR DETAILS.
- 17 NEW TREE. SEE LANDSCAPE DRAWING FOR DETAILS.
- 18 NEW BENCH. SEE LANDSCAPE DRAWINGS FOR DETAILS.
- 19 EXISTING BENCH MOVED.
- 20 NEW #57 STONE BED FOR STORMWATER PRE-TREATMENT.
- 21 NEW POROUS PAVEMENT. SEE DETAIL ON SHEET CIV0502.



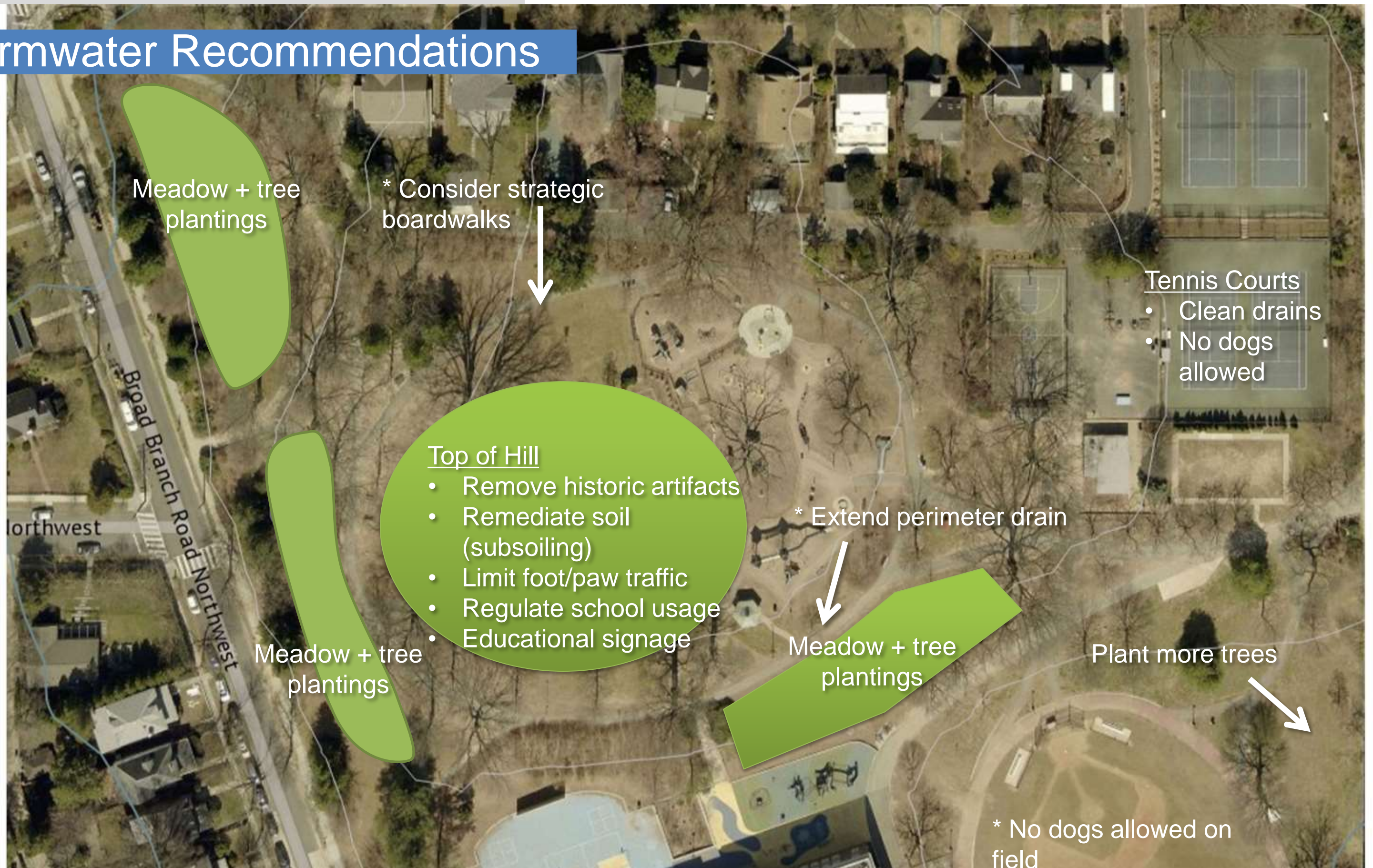
# Site Plan Park



## Lafayette Recreation Center

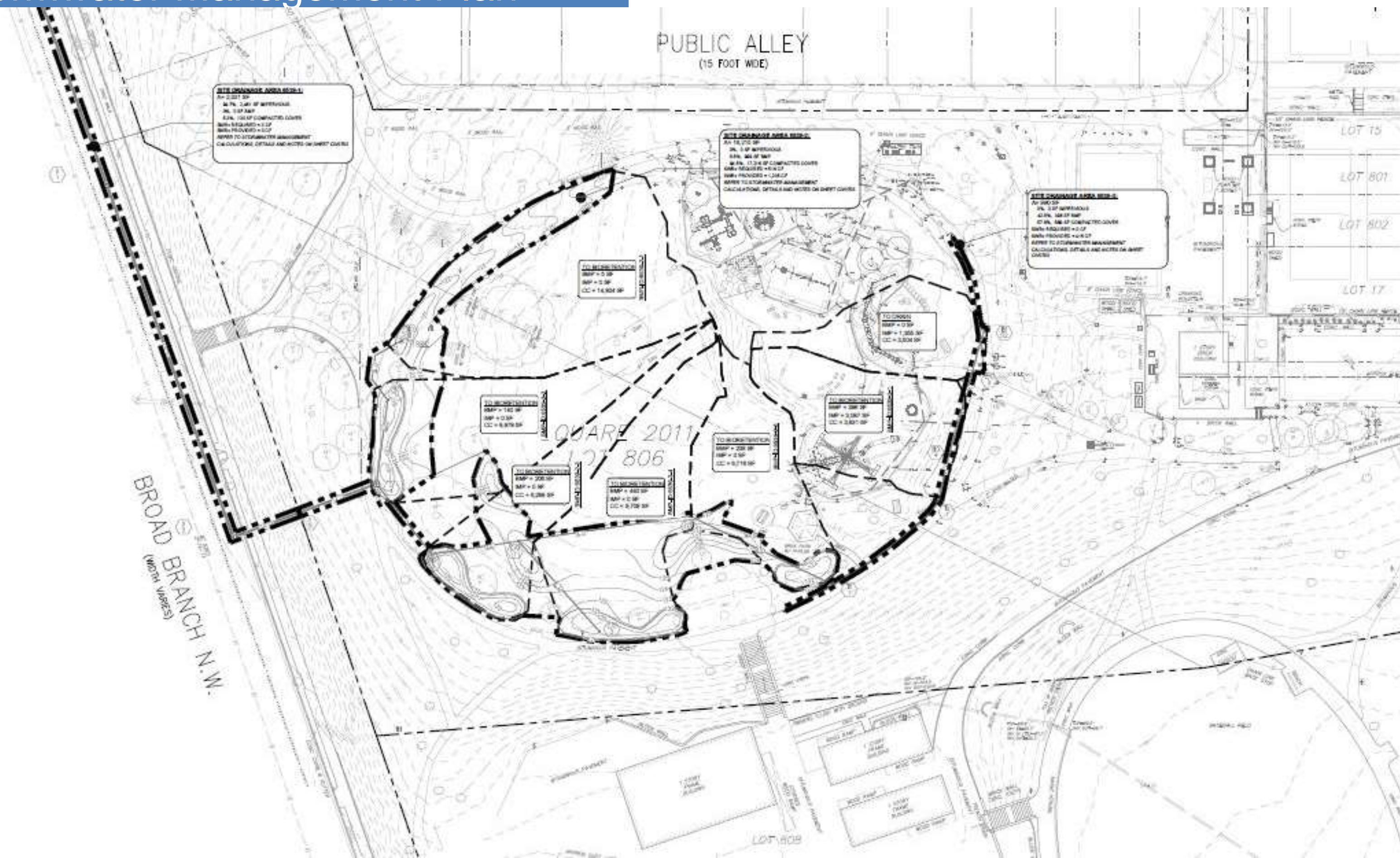


# Stormwater Recommendations



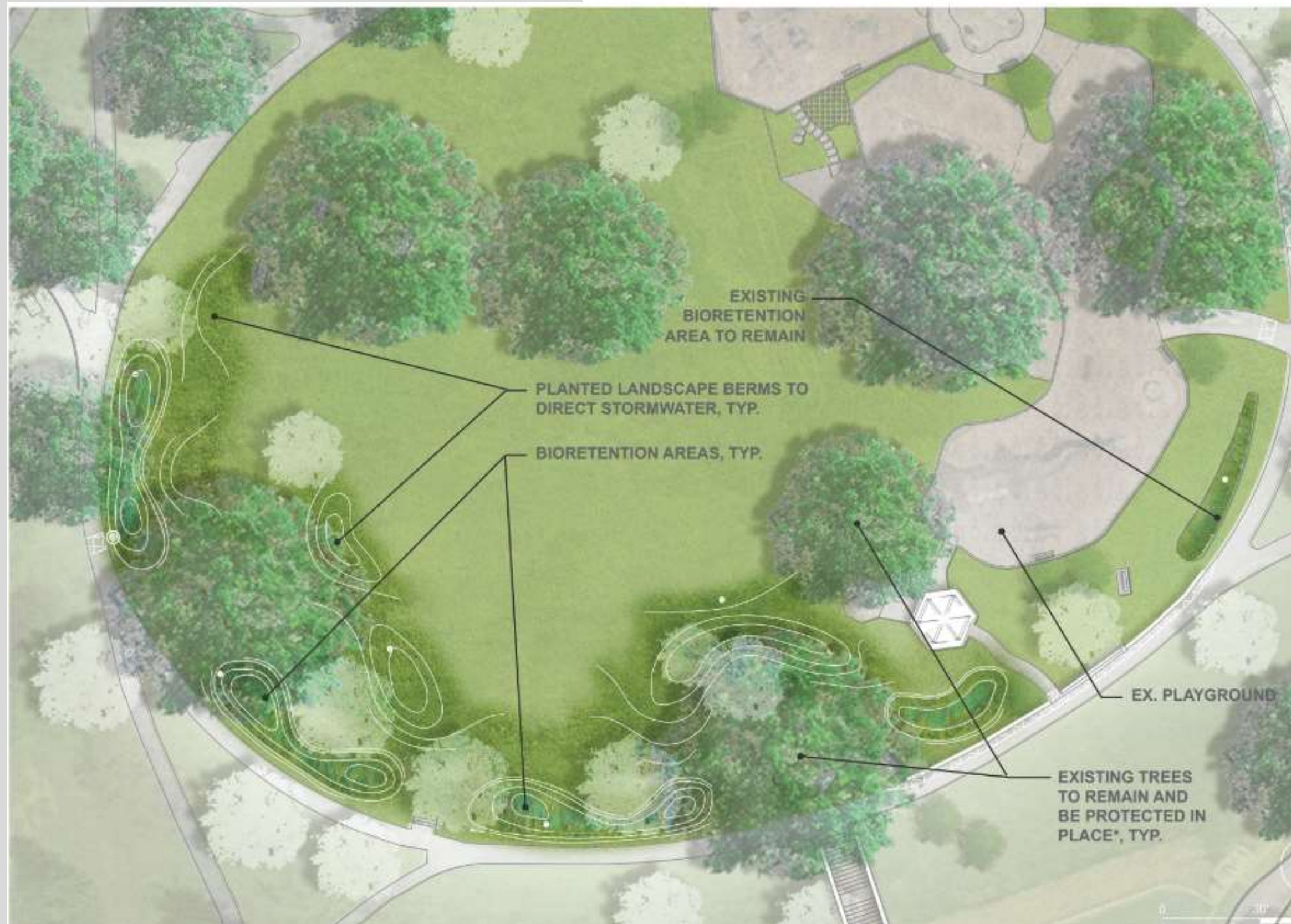


# Stormwater Management Plan





# Stormwater Management Plan



PRECEDENT IMAGES





## Render 1 South West Corner



## Lafayette Recreation Center



## Render 2 North West Corner

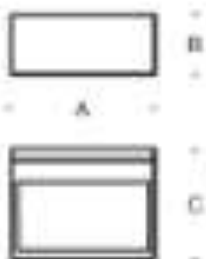


## Lafayette Recreation Center



# Facility light fixtures

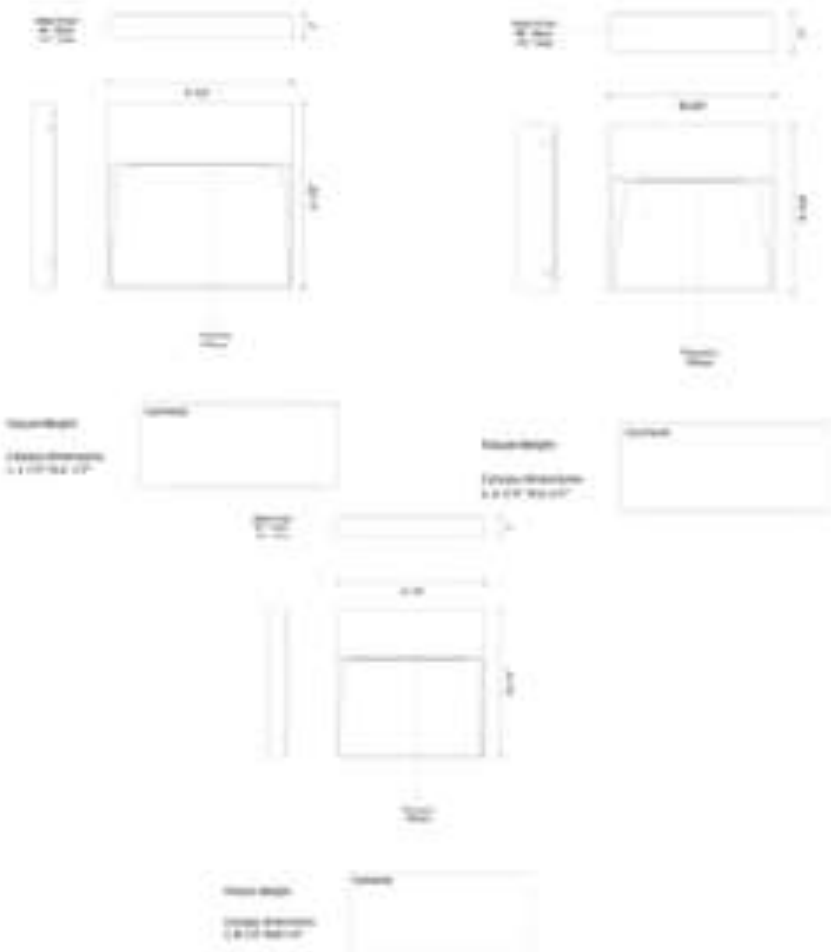
## BEGA LED



LED wall luminaire - asymmetric light distribution

	LED	A	B	C
22 386	17.9W	9 1/2	4 1/2	7 7/8

## Kuzco Lighting - Casa LED



### Lamping:

Option	Lamp Type	Total Lumens	Total Wattage	Volts	Color Temp
Medium	LED Built-In	1600	23	120	3000 (Soft White)
Large	LED Built-In	2400	32	120	3000 (Soft White)
Small	LED Built-In	800	11	120	3000 (Soft White)

### Dimensions:

- Small Fixture: W 4.5 in , H 4.5 in , D 1 in
- Medium Fixture: W 6.75 in , H 6.75 in , D 1 in
- Large Fixture: W 8.25 in , H 8.25 in , D 1 in

### Model(s):

EW71311-GY, EW71309-GY, EW71305-GY, EW71311-BK, EW71309-BK, EW71305-BK.



# Park Lighting Plan

SITE POLE LIGHTING



KY1

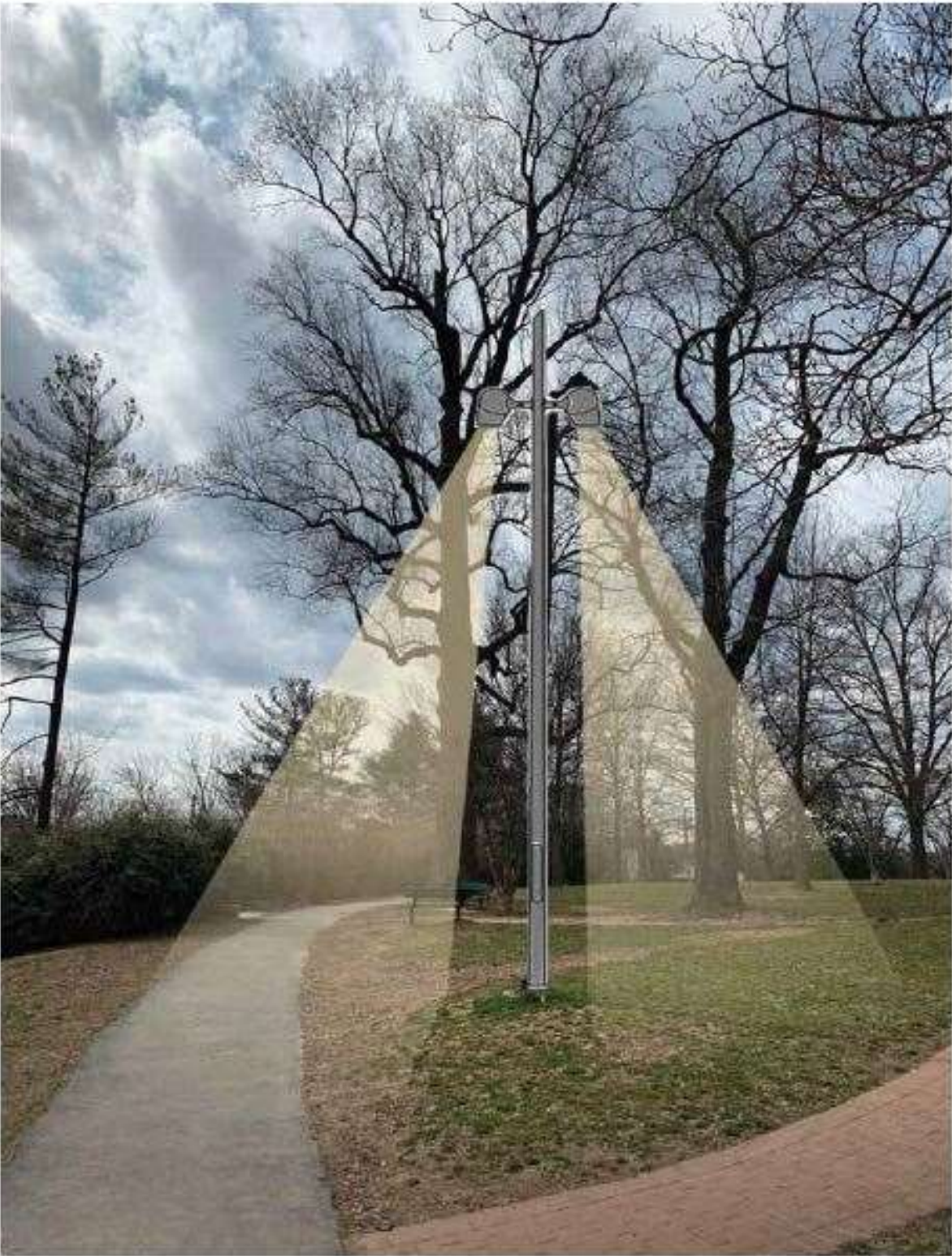
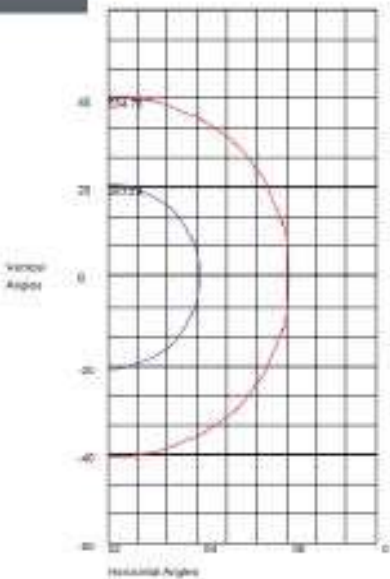
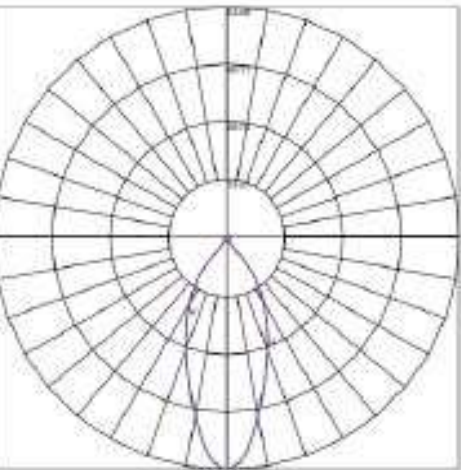
Modern light pole with tapered vertical pole and options for multiple heads.

This is an LED fixture with a forward throw optic.

Customization of number of heads that can fit on the pole.

Each fixture head has accessories, such as the snoot that is shown in the images on the right. This helps control the beam spread of the LED source.

The fixture heads are individually adjustable which allows us to dial in the angle of the light.





# Park Lighting Plan

## BOLLARD LIGHTING



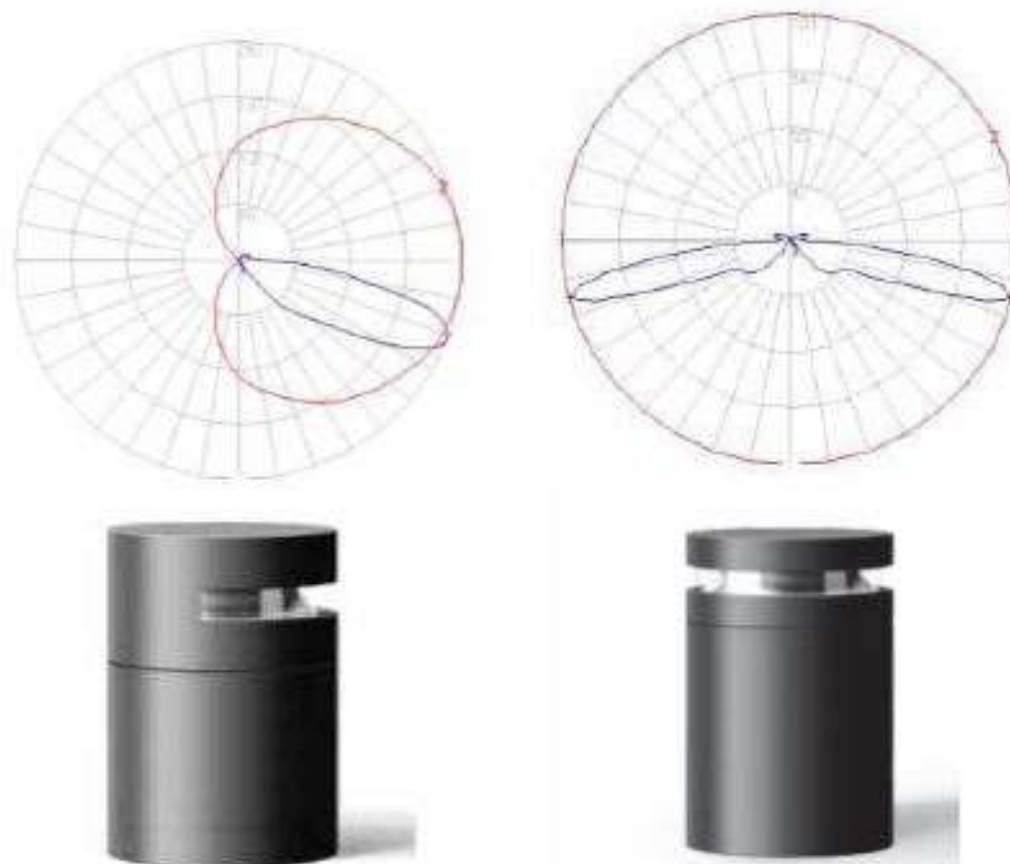
## KY2

This is an LED bollard that has multiple optic choices.

This fixture also comes in a few different heights, ranging from 12" -36" tall.

This fixture has the option of a 180 degree beam spread or a 360 degree spread.

This gives us options in terms of lighting only the path in certain areas, and areas where it is along both pathway and vegetation we can use the 360 beam to highlight both areas.





# Park Lighting Plan

ADDITIONAL PARK ELEMENTS



KY3

## GAZEBO

- Remove and replace existing surface mount light
- New light to have LED lamp inside or be LED integral.
- New fixture to have diffused glass shield for protection from elements and also to create evenly-lit effect inside of Gazebo.





# Park Lighting Plan

ADDITIONAL PARK ELEMENTS



KY4

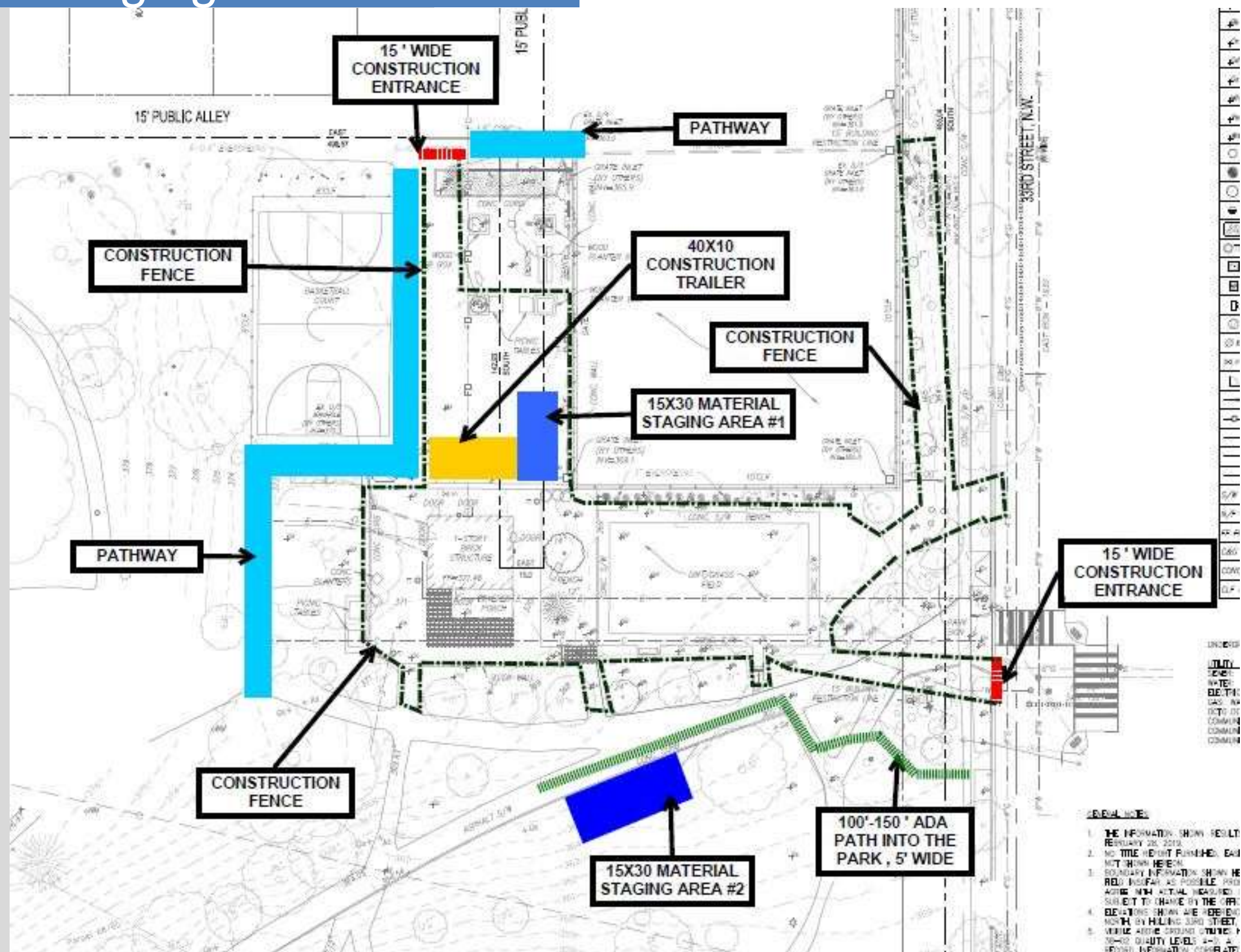
## SIGNAGE LIGHTING

- Proposing adding (1 or 2) small uplights at the sign to illuminate the face of the sign to enhance wayfinding
- This new fixture would have a snoot to reduce glare and focus light on sign only.





# Construction Staging Plan





## Construction Schedule

### **Recreation Center Project**

Construction Start/Mobilization: Week of November 4, 2019

*i.e. Temp Utilities, Tree Protection Measures, Construction Fence, Soil Erosion & Sediment Control Measures*

Construction: November 2019 to June 2020

Construction Completion: June 2020

### **Storm Water Management Project**

Archeological Investigation / Work / Remediation: December 2019 / January 2020

Design & Permit Approval: December 2019

Construction: January 2019 to April 2020



# QUESTION & ANSWER





## POINTS OF CONTACT

### **Department of General Services**

John Stokes, Deputy Director

[john.stokes@dc.gov](mailto:john.stokes@dc.gov)

### **Department of Parks and Recreation**

Brent Sisco, Landscape Architect

[brent.sisco@dc.gov](mailto:brent.sisco@dc.gov)

### **Project Website**

[www.dgs.dc.gov/page/lafayette-recreation-center-modernization](http://www.dgs.dc.gov/page/lafayette-recreation-center-modernization)