



# LAFAYETTE-POINTER WATER MITIGATION & FIELD REPLACEMENT PROJECT

DEPARTMENT OF GENERAL SERVICES – CAPITAL CONSTRUCTION DIVISION  
MARCH 13, 2024





# LAFAYETTE-POINTER WATER MITIGATION & FIELD REPLACEMENT PROJECT

## MEETING ATTENDEES

DEPARTMENT OF GENERAL SERVICES(DGS)



DC DEPARTMENT OF PARKS AND RECREATION



DISTRICT OF COLUMBIA PUBLIC SCHOOLS



HEP CONSTRUCTION



DRUMMOND PROJECTS



LAFAYETTE ELEMENTARY SCHOOL



WILES MENSCH



FRIENDS OF LAFAYETTE PARK (FOLP)



HUSKA CONSULTING





# LAFAYETTE-POINTER WATER MITIGATION & FIELD REPLACEMENT PROJECT

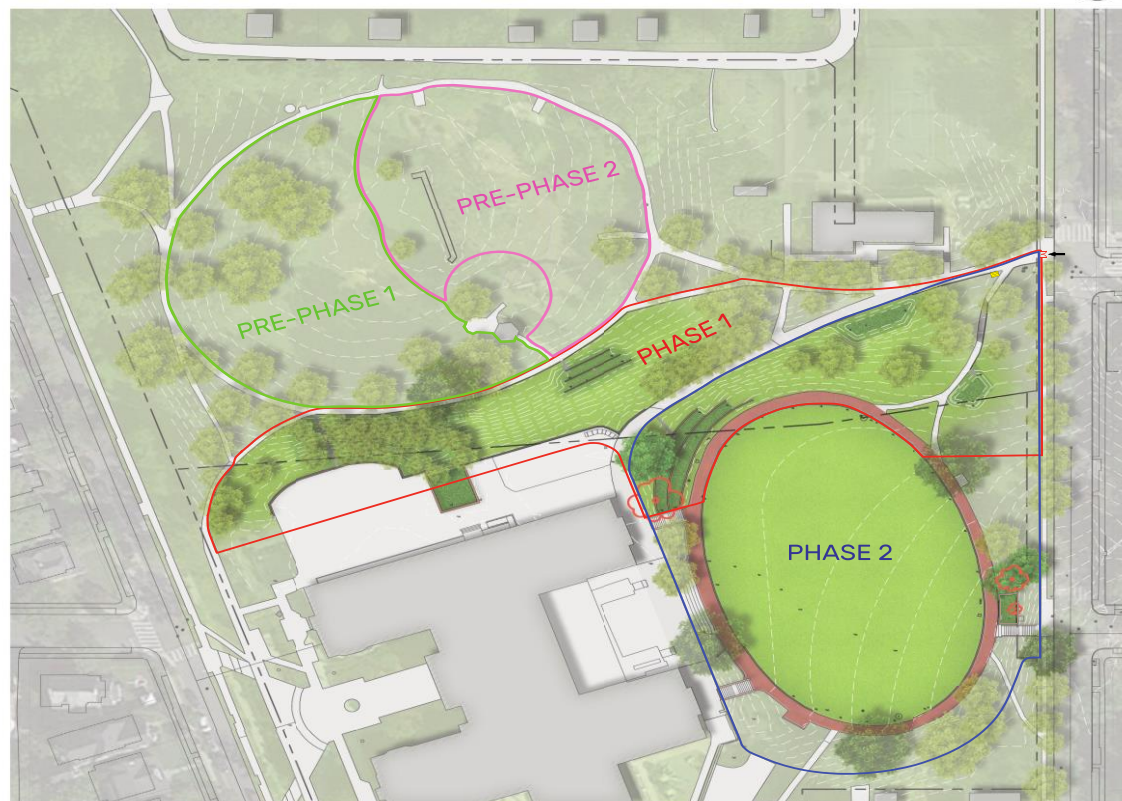
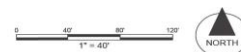
## PROJECT OVERVIEW

- IDENTIFY FACTORS LEADING TO STORMWATER RUNOFF ON THE SOUTHEAST HILLSIDE FROM THE UPPER FIELD TOWARD THE LOWER SCHOOL FIELD AND TRACK
- INSTALL STORMWATER MANAGEMENT TO REDIRECT OR RETAIN RAINFALL.
- REPLACE FIELD AND TRACK AT LOWER FIELD.



# LAFAYETTE-POINTER WATER MITIGATION & FIELD REPLACEMENT PROJECT

## STORMWATER IMPROVEMENT PLAN



### LEGEND

- PRE-PHASE 1
- PRE-PHASE 2
- PHASE 1
- PHASE 2
- ENTRANCE
- TRUCK WASH AREA

\*DARKER ZONES REPRESENT POSSIBLE AREAS OF WORK. FADED AERIAL FOR REFERENCE ONLY.



LAFAYETTE ELEMENTARY SCHOOL AND LAFAYETTE-POINTER PARK  
WASHINGTON, DC

L02



# LAFAYETTE-POINTER WATER MITIGATION & FIELD REPLACEMENT PROJECT

## CURRENT CONDITION



*Existing conditions top of hill to the playground: the project plan is to modify the trench drain but remove stairs and shrubs and install a new retaining wall and bioretention area.*



# LAFAYETTE-POINTER WATER MITIGATION & FIELD REPLACEMENT PROJECT

## CURRENT CONDITION



*Existing conditions at the top of the hill showing small trees that will be cleared for restoration of the bioretention area with new hillside plantings.*



# LAFAYETTE-POINTER WATER MITIGATION & FIELD REPLACEMENT PROJECT

## CURRENT CONDITION



*The bottom of the stairs looking up: concrete wall patch after stairs are demolished.*



# LAFAYETTE-POINTER WATER MITIGATION & FIELD REPLACEMENT PROJECT

## CURRENT CONDITION



*The rest of the retaining wall further west of plan: small tree clearing, grading, and installation of trench drains.*





# LAFAYETTE-POINTER WATER MITIGATION & FIELD REPLACEMENT PROJECT

## CURRENT CONDITION

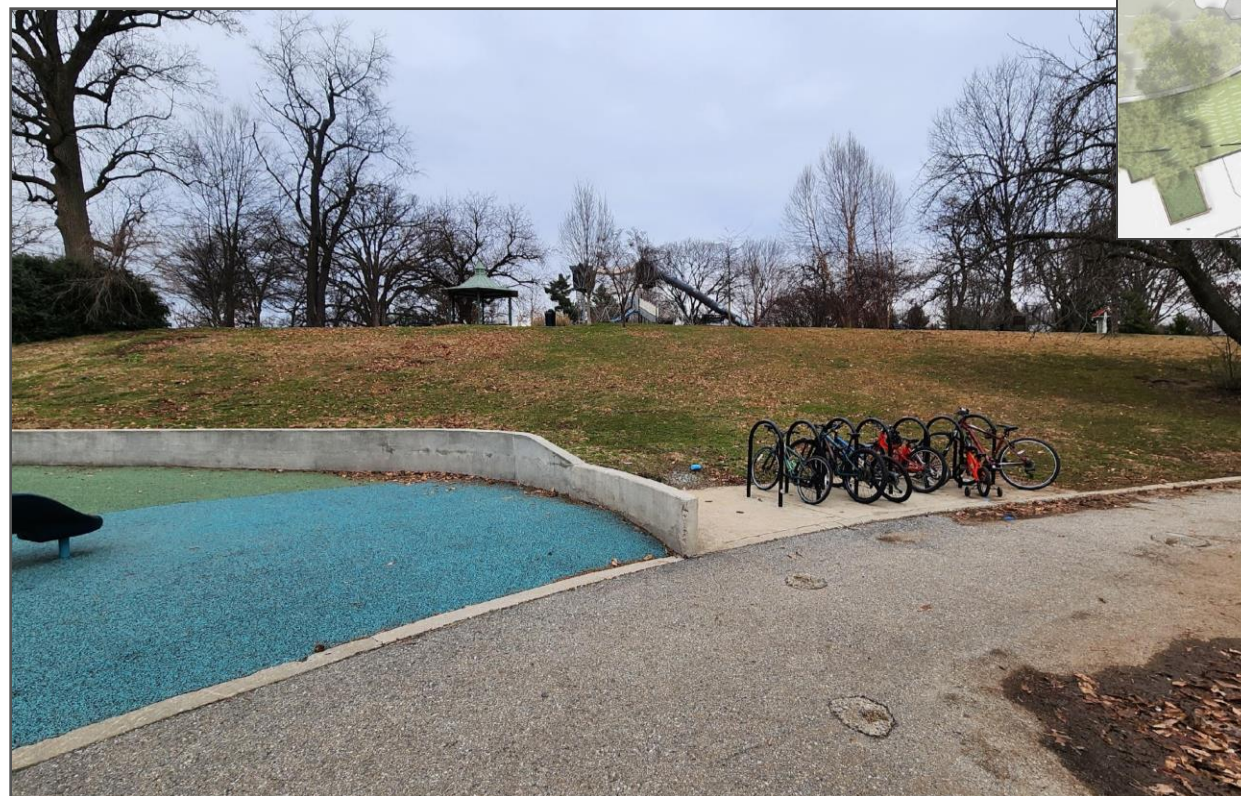


*Existing bio: grading and new trench drain installation to stop sediment from coming over the wall.*



# LAFAYETTE-POINTER WATER MITIGATION & FIELD REPLACEMENT PROJECT

## CURRENT CONDITION



*The hillside bioretention with concrete retaining walls and RIP RAP off of asphalt walkway.*



# LAFAYETTE-POINTER WATER MITIGATION & FIELD REPLACEMENT PROJECT

## CURRENT CONDITION



*Removing the existing concrete pad and adding a bioretention area; borders to be built up Eco berms.*



# LAFAYETTE-POINTER WATER MITIGATION & FIELD REPLACEMENT PROJECT

## CURRENT CONDITION



*Adding a bioretention at asphalt walkway on the hill, borders to be berms.*



# LAFAYETTE-POINTER WATER MITIGATION & FIELD REPLACEMENT PROJECT

## CURRENT CONDITION

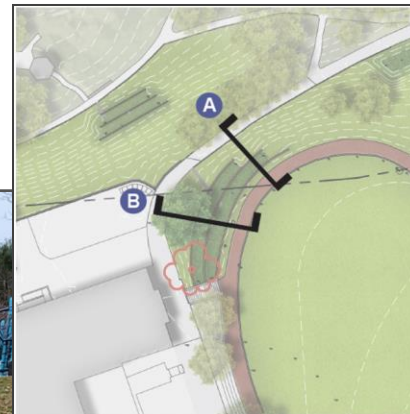


*Athletic field: total field replacement and removal of asphalt walkway down to the track from the upper asphalt path. It will be replaced with stormwater management.*



# LAFAYETTE-POINTER WATER MITIGATION & FIELD REPLACEMENT PROJECT

## CURRENT CONDITION



*Proposed area for the tiered bioretention w/concrete retaining walls on the northwest side of the track; removing the (3) trees and installing a new honey locust tree.*



# LAFAYETTE-POINTER WATER MITIGATION & FIELD REPLACEMENT PROJECT

## CURRENT CONDITION



*Proposed location for a new bioretention on the southeast side that of the field is tied into all the field underdrains; removal of (2) trees and the installation of (1) new honey Locust tree.*



# LAFAYETTE-POINTER WATER MITIGATION & FIELD REPLACEMENT PROJECT

## CURRENT CONDITION



*Existing conditions highlighting the bare spot on the field from compaction and lack of drainage.*





# LAFAYETTE-POINTER WATER MITIGATION & FIELD REPLACEMENT PROJECT



## PROJECT RENDERINGS



# LAFAYETTE-POINTER WATER MITIGATION & FIELD REPLACEMENT PROJECT

## PROJECT RENDERINGS

**STORMWATER IMPROVEMENT PLAN**

1" = 40'

**HILLSIDE PLANTS**

|   |   |   |
|---|---|---|
| <br>PENNSYLVANIA SEDGE | <br>SWITCH GRASS | <br>LYRELEAF SAGE  |
| <br>CHRISTMAS FERN     | <br>ALUM ROOT    | <br>WOODLAND ASTER |

**BIORETENTION PLANTS**

|  |  |   |
|--|--|---|
| <br>SUMMERSWEET CLETHRA | <br>BLUE FALSE INDIGO | <br>BLUE STAR    |
| <br>SWITCH GRASS        | <br>TUSSOCK SEDGE     | <br>JOE PYE WEED |

**PROPOSED TREES**

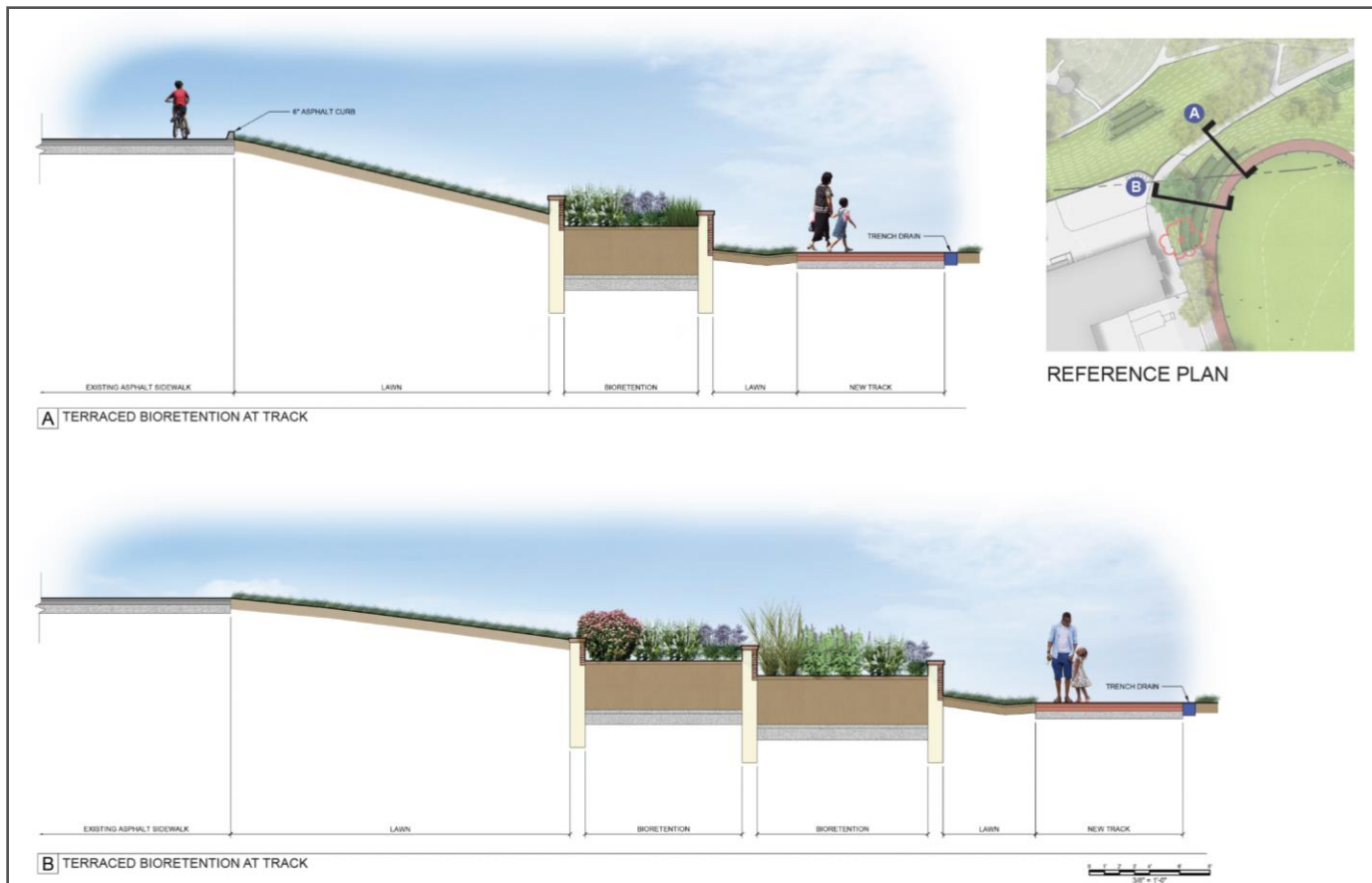
|  |   |
|--|---|
| <br>HONEYLOCUST<br>10-YEAR CANOPY: 13-16' | <br>YELLOWWOOD<br>10-YEAR CANOPY: 12-15' |
|--|---|

\*DARKER ZONES REPRESENT POSSIBLE AREAS OF WORK. FADED AERIAL FOR REFERENCE ONLY.



# LAFAYETTE-POINTER WATER MITIGATION & FIELD REPLACEMENT PROJECT

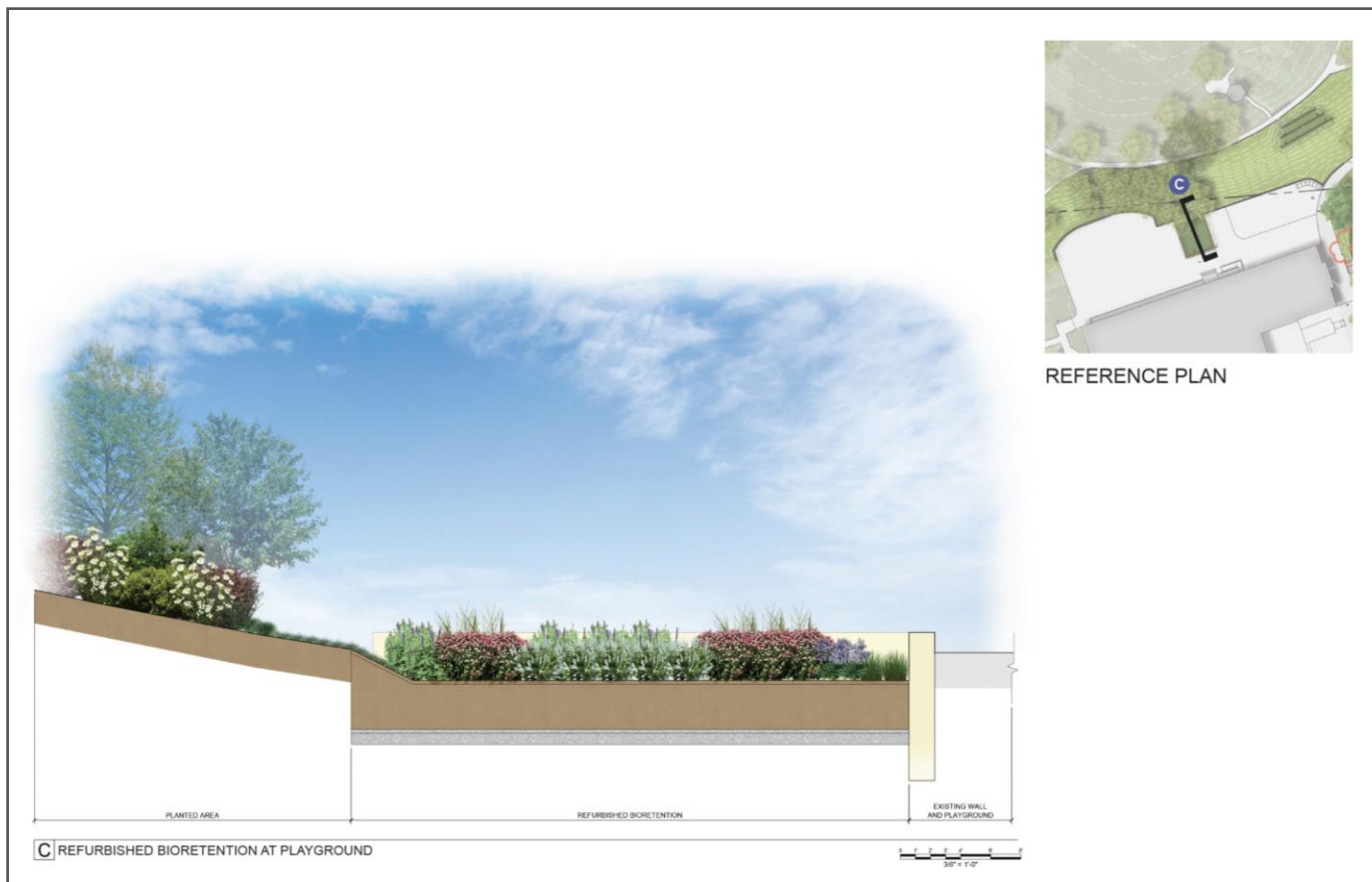
## PROJECT RENDERINGS





# LAFAYETTE-POINTER WATER MITIGATION & FIELD REPLACEMENT PROJECT

## PROJECT RENDERINGS





# LAFAYETTE-POINTER WATER MITIGATION & FIELD REPLACEMENT PROJECT

## PROJECT RENDERINGS





# LAFAYETTE-POINTER WATER MITIGATION & FIELD REPLACEMENT PROJECT

## PROJECT RENDERINGS





# LAFAYETTE-POINTER WATER MITIGATION & FIELD REPLACEMENT PROJECT

## TURF FIELD

- This is a year-round field. Grass fields must have a "rest" period during cooler months (typically Nov – March, per DPR guidelines). A school field cannot be offline for 4-5 months per year.
- If used year-round, the grass field would need to be replaced every 3-5 years, at an estimated capital cost of \$250,000.
- DGS will install Fieldturf turf system with Ecogrind infill.
- Crumb rubber IS NOT part of the scope.



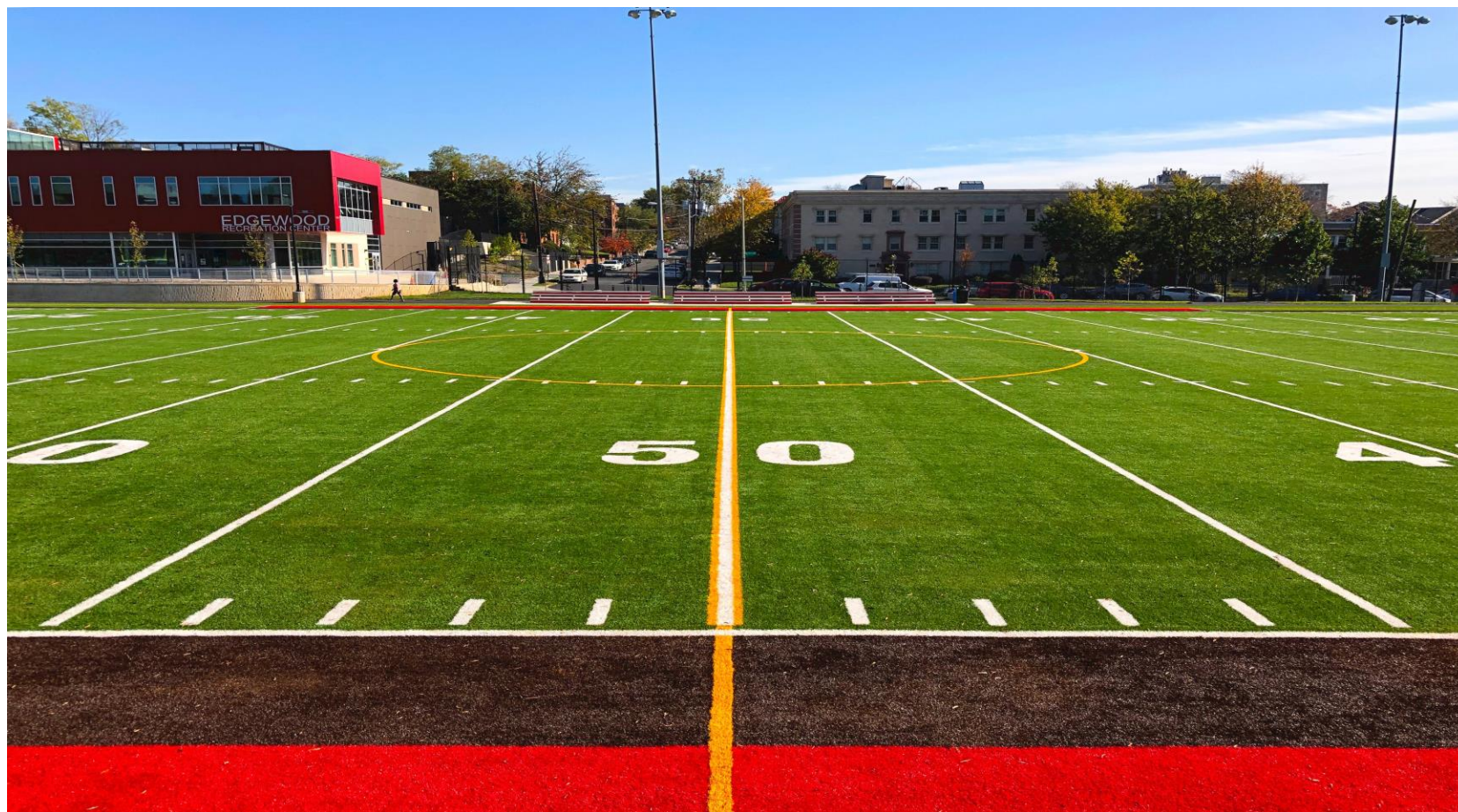
## Deanwood Recreational Center Turf Baseball Diamond Installed CY 2024







## Edgewood Recreational Center Field Installed CY 2021





## Shepard Park ES Soccer Field Installed CY 2021





## QUESTIONS & ANSWERS

# CONNECT WITH DGS!



Contact: [DGS@dc.gov](mailto:DGS@dc.gov)



Facebook: [www.facebook.com/dcdg](http://www.facebook.com/dcdg)



Twitter: [www.twitter.com/dcdg](http://www.twitter.com/dcdg)



Instagram: [www.instagram.com/dcdg](http://www.instagram.com/dcdg)



@dcdgs

24





## 2015 AERIAL IMAGE





## 2012 AERIAL IMAGE





## 2012 AERIAL IMAGE





## 2008 AERIAL IMAGE

