

LAFAYETTE ELEMENTARY SCHOOL

A SCHOOL ON THE PARK



S I T MEETING #7

LAFAYETTE ELEMENTARY SCHOOL SIT MEETING – OCTOBER 7, 2014



LAFAYETTE ELEMENTARY SCHOOL

HARTMAN-COX ARCHITECTS / GRIMM + PARKER ARCHITECTS
202.333.6446 / 301.595.1000

AGENDA – SIT MEETING #7

- | | | |
|-----------------------------|------------|-------------|
| • DGS Update | 10 minutes | 5:00 – 5:10 |
| • Block Plan Follow-Up | 20 minutes | 5:10 – 5:30 |
| • Special Site Elements | 10 minutes | 5:30 – 5:40 |
| • Conceptual Landscape Plan | 60 minutes | 5:40 – 6:40 |
| • Updated Massing View | 15 minutes | 6:40 – 6:55 |
| • Wrap Up | 5 minutes | 6:55 – 7:00 |

LAFAYETTE ELEMENTARY SCHOOL SIT MEETING – OCTOBER 7, 2014



LAFAYETTE ELEMENTARY SCHOOL

HARTMAN-COX ARCHITECTS / GRIMM + PARKER ARCHITECTS
202.333.6446 / 301.595.1000

Proposed Plan

LAFAYETTE ELEMENTARY SCHOOL – SCHEMATIC DESIGN SITE PLAN & FIRST FLOOR



LAFAYETTE ELEMENTARY SCHOOL SIT MEETING – OCTOBER 7, 2014

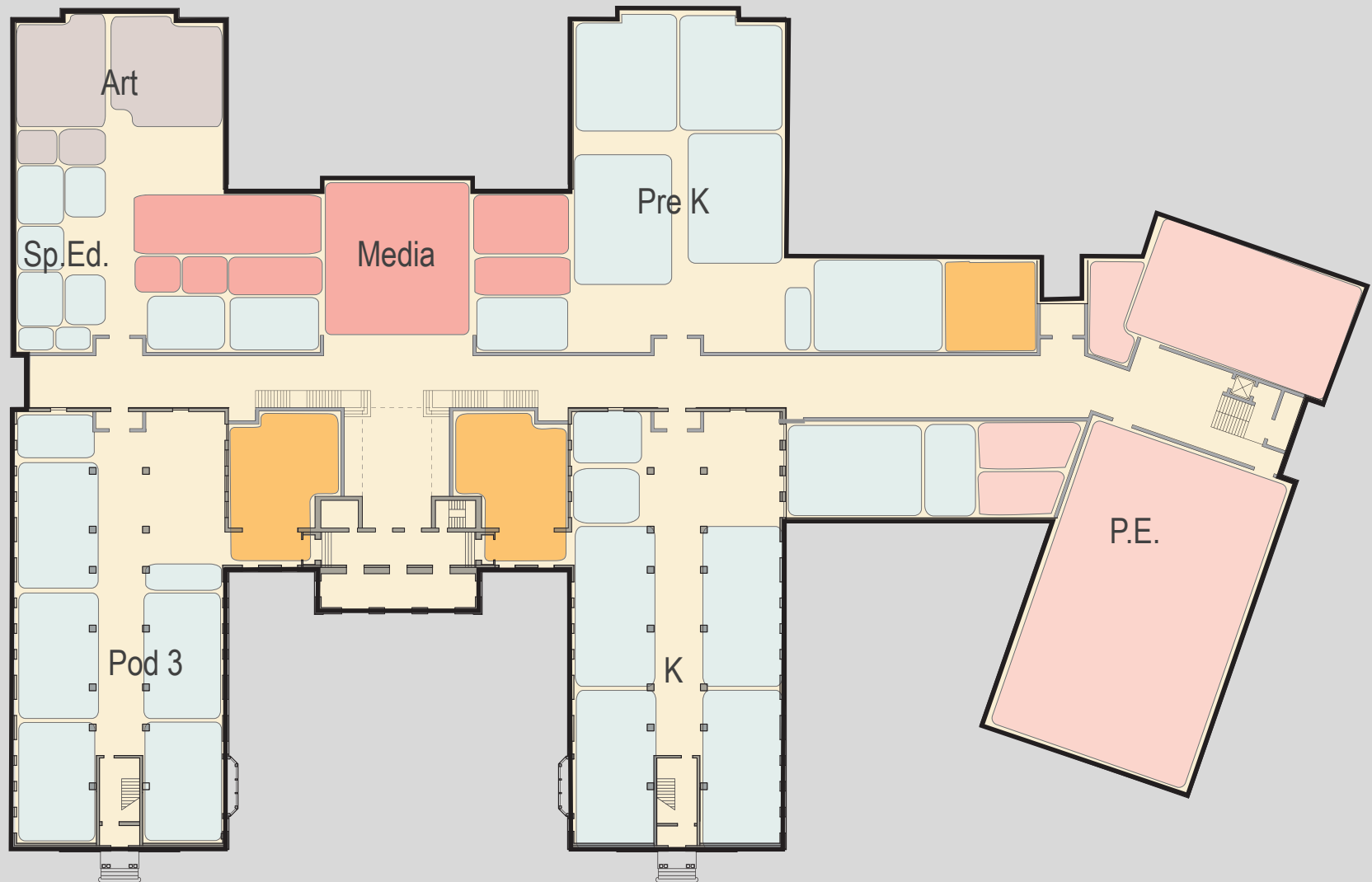


LAFAYETTE ELEMENTARY SCHOOL

HARTMAN-COX ARCHITECTS / GRIMM + PARKER ARCHITECTS
202.333.6446 / 301.595.1000

Proposed Plan

LAFAYETTE ELEMENTARY SCHOOL – SCHEMATIC DESIGN
ENLARGED FIRST FLOOR PLAN



LAFAYETTE ELEMENTARY SCHOOL SIT MEETING – OCTOBER 7, 2014



LAFAYETTE ELEMENTARY SCHOOL

HARTMAN-COX ARCHITECTS / GRIMM + PARKER ARCHITECTS
202.333.6446 / 301.595.1000

Proposed Plan

LAFAYETTE ELEMENTARY SCHOOL – SCHEMATIC DESIGN OUTDOOR PLAY AREAS



LAFAYETTE ELEMENTARY SCHOOL SIT MEETING – OCTOBER 7, 2014



LAFAYETTE ELEMENTARY SCHOOL

HARTMAN-COX ARCHITECTS / GRIMM + PARKER ARCHITECTS
202.333.6446 / 301.595.1000

Alternative Plan

LAFAYETTE ELEMENTARY SCHOOL – SCHEMATIC DESIGN
SITE PLAN & FIRST FLOOR



LAFAYETTE ELEMENTARY SCHOOL SIT MEETING – OCTOBER 7, 2014

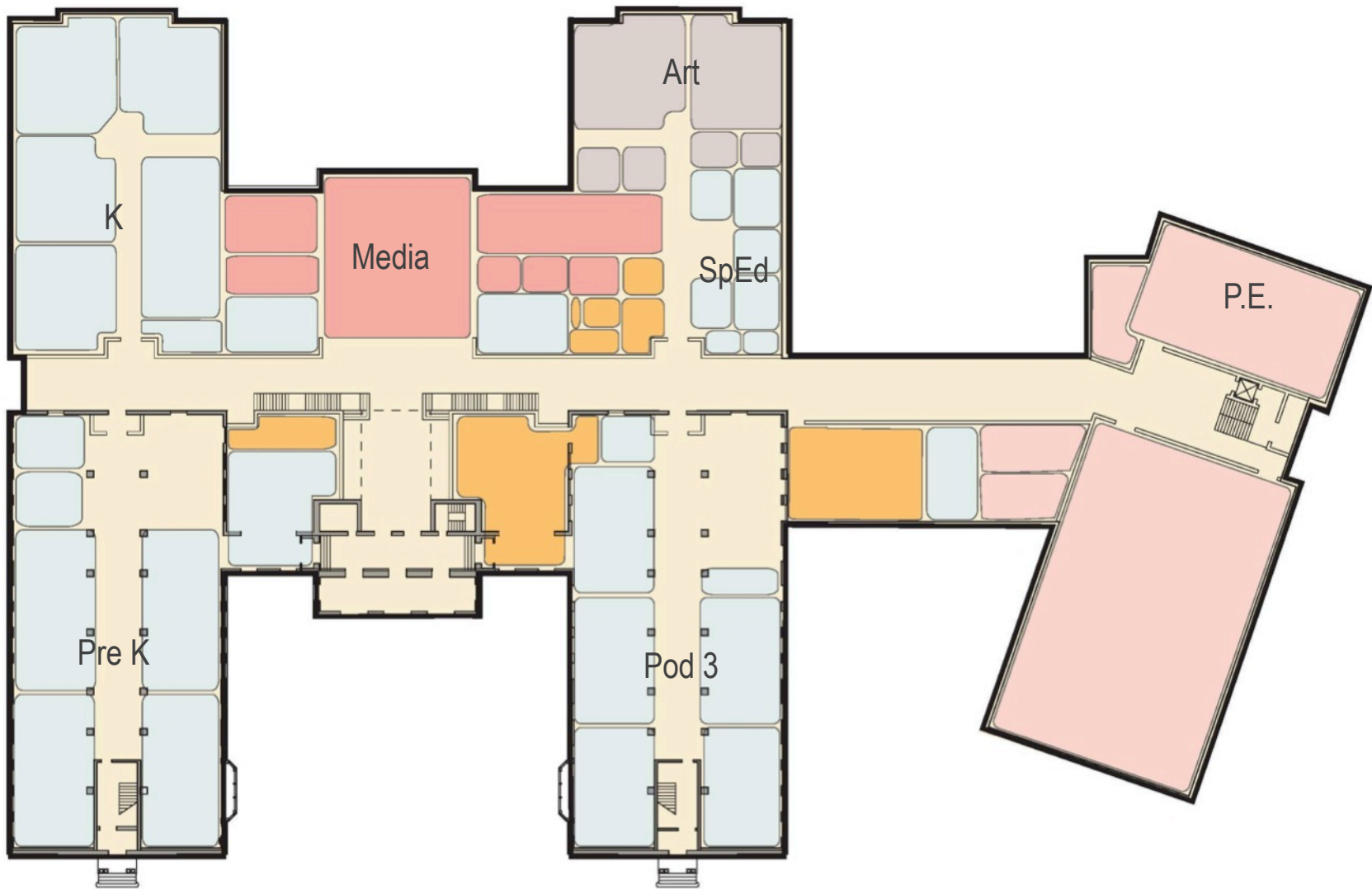


LAFAYETTE ELEMENTARY SCHOOL

HARTMAN-COX ARCHITECTS / GRIMM + PARKER ARCHITECTS
202.333.6446 / 301.595.1000

Alternative Plan

LAFAYETTE ELEMENTARY SCHOOL – SCHEMATIC DESIGN
FIRST FLOOR – ECE FLIPPED WITH ART & SP. ED.



LAFAYETTE ELEMENTARY SCHOOL SIT MEETING – OCTOBER 7, 2014

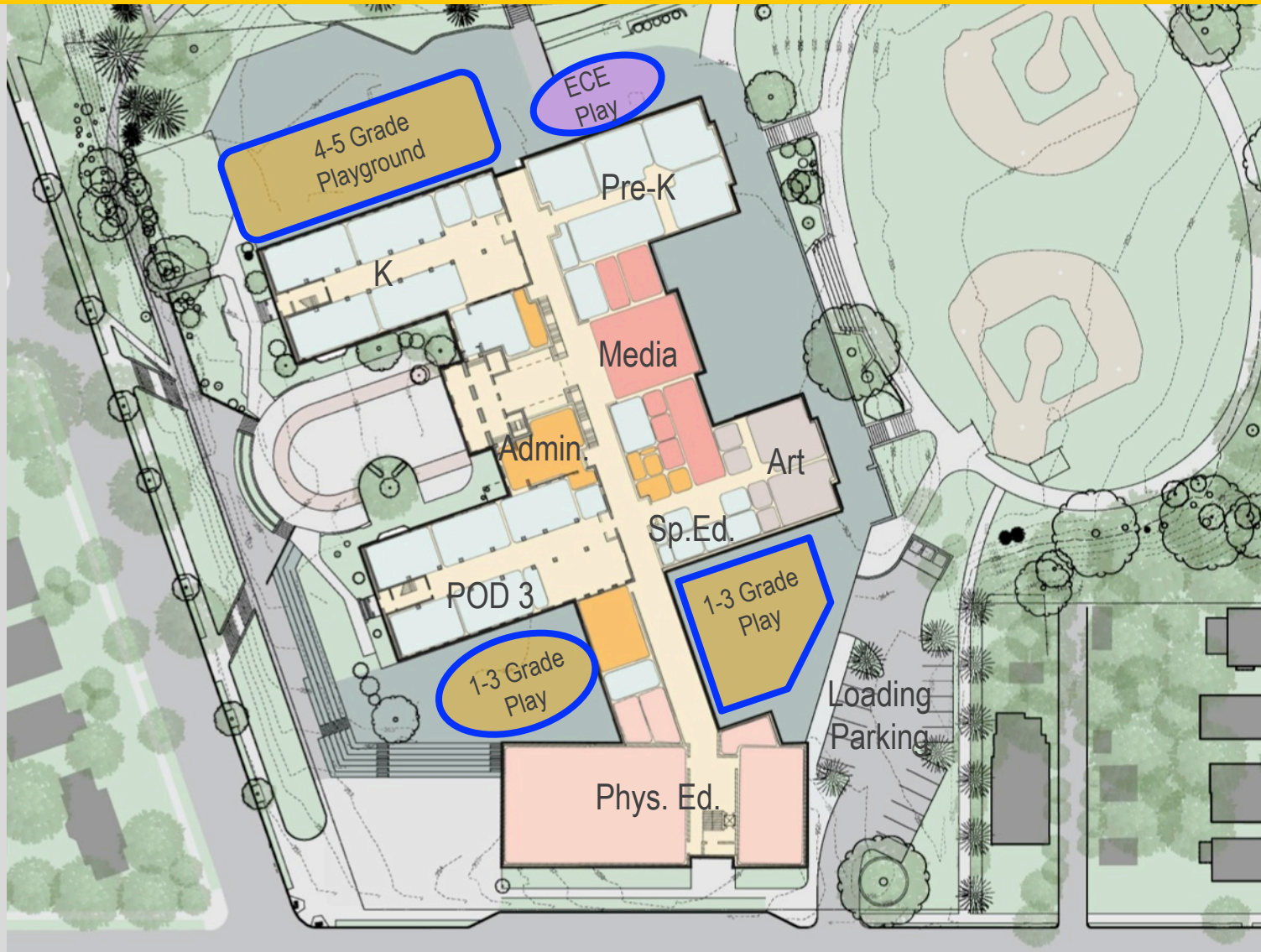


LAFAYETTE ELEMENTARY SCHOOL

HARTMAN-COX ARCHITECTS / GRIMM + PARKER ARCHITECTS
202.333.6446 / 301.595.1000

Alternative Plan

LAFAYETTE ELEMENTARY SCHOOL – SCHEMATIC DESIGN OUTDOOR PLAY AREAS



LAFAYETTE ELEMENTARY SCHOOL SIT MEETING – OCTOBER 7, 2014

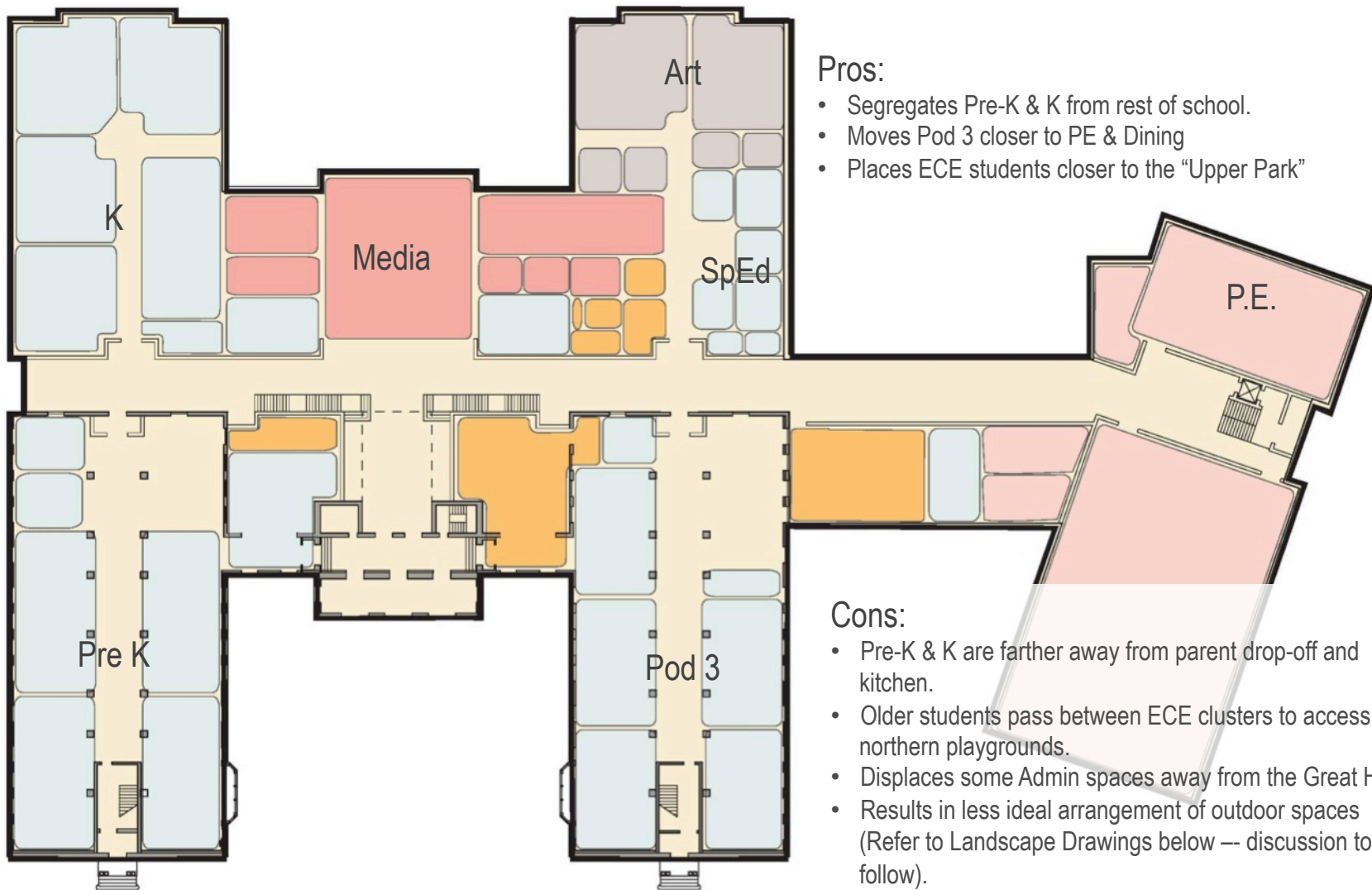


LAFAYETTE ELEMENTARY SCHOOL

HARTMAN-COX ARCHITECTS / GRIMM + PARKER ARCHITECTS
202.333.6446 / 301.595.1000

Alternative Plan

LAFAYETTE ELEMENTARY SCHOOL – SCHEMATIC DESIGN
FIRST FLOOR – ECE FLIPPED WITH ART & SP. ED.



Pros:

- Segregates Pre-K & K from rest of school.
- Moves Pod 3 closer to PE & Dining
- Places ECE students closer to the “Upper Park”

Cons:

- Pre-K & K are farther away from parent drop-off and kitchen.
- Older students pass between ECE clusters to access northern playgrounds.
- Displaces some Admin spaces away from the Great Hall
- Results in less ideal arrangement of outdoor spaces (Refer to Landscape Drawings below — discussion to follow).

LAFAYETTE ELEMENTARY SCHOOL SIT MEETING – OCTOBER 7, 2014



LAFAYETTE ELEMENTARY SCHOOL

HARTMAN-COX ARCHITECTS / GRIMM + PARKER ARCHITECTS
202.333.6446 / 301.595.1000

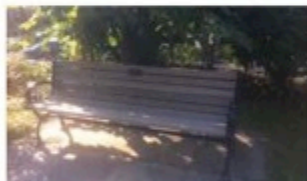
Special Site Elements to be Saved or Relocated



Bell



Kate McKay Bench



Amy R. Templeton Bench



Stephanie Hill Memorial Tree



Student Garden



Bust of Lafayette



Northampton Tree



Park Tree



Park Tree



Library Murals

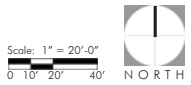
LAFAYETTE ELEMENTARY SCHOOL SIT MEETING – OCTOBER 7, 2014



LAFAYETTE ELEMENTARY SCHOOL

HARTMAN-COX ARCHITECTS / GRIMM + PARKER ARCHITECTS
202.333.6446 / 301.595.1000

LANDSCAPE CONCEPT - OVERALL SITE PLAN / LANDSCAPE APPROACH

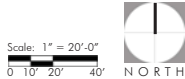


LAFAYETTE ELEMENTARY SCHOOL

LAFAYETTE ELEMENTARY SCHOOL SIT MEETING - OCTOBER 7, 2014

STUDIO39 Landscape Architecture, P.C. 6416 Grovedale Drive, Suite 100-A Alexandria, Virginia 22310 703.719.6500 www.studio39.com

LANDSCAPE CONCEPT - PRIORITIZATION

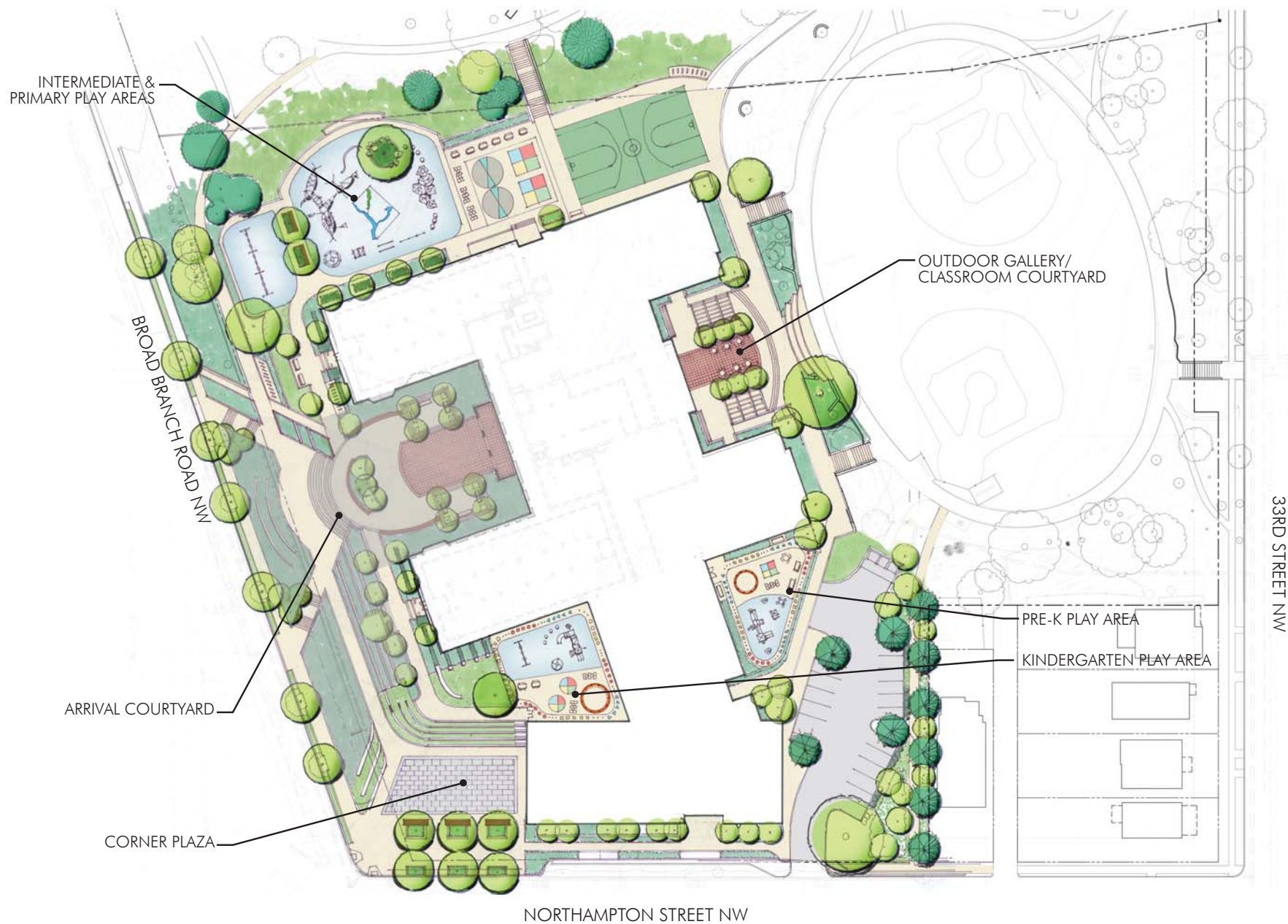
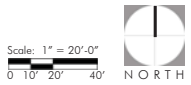


LAFAYETTE ELEMENTARY SCHOOL

LAFAYETTE ELEMENTARY SCHOOL SIT MEETING - OCTOBER 7, 2014

STUDIO39 Landscape Architecture, P.C. 6416 Grovedale Drive, Suite 100-A Alexandria, Virginia 22310 703.719.6500 www.studio39.com

LANDSCAPE CONCEPT - AREAS OF FOCUS

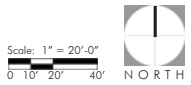


LAFAYETTE ELEMENTARY SCHOOL

LAFAYETTE ELEMENTARY SCHOOL SIT MEETING - OCTOBER 7, 2014

STUDIO39 Landscape Architecture, P.C. 6416 Grovedale Drive, Suite 100-A Alexandria, Virginia 22310 703.719.6500 www.studio39.com

LANDSCAPE CONCEPT - SIGNIFICANT SITE FEATURES TO REMAIN



LAFAYETTE ELEMENTARY SCHOOL

LAFAYETTE ELEMENTARY SCHOOL SIT MEETING - OCTOBER 7, 2014

STUDIO39 Landscape Architecture, P.C. 6416 Grovedale Drive, Suite 100-A Alexandria, Virginia 22310 703.719.6500 www.studio39.com

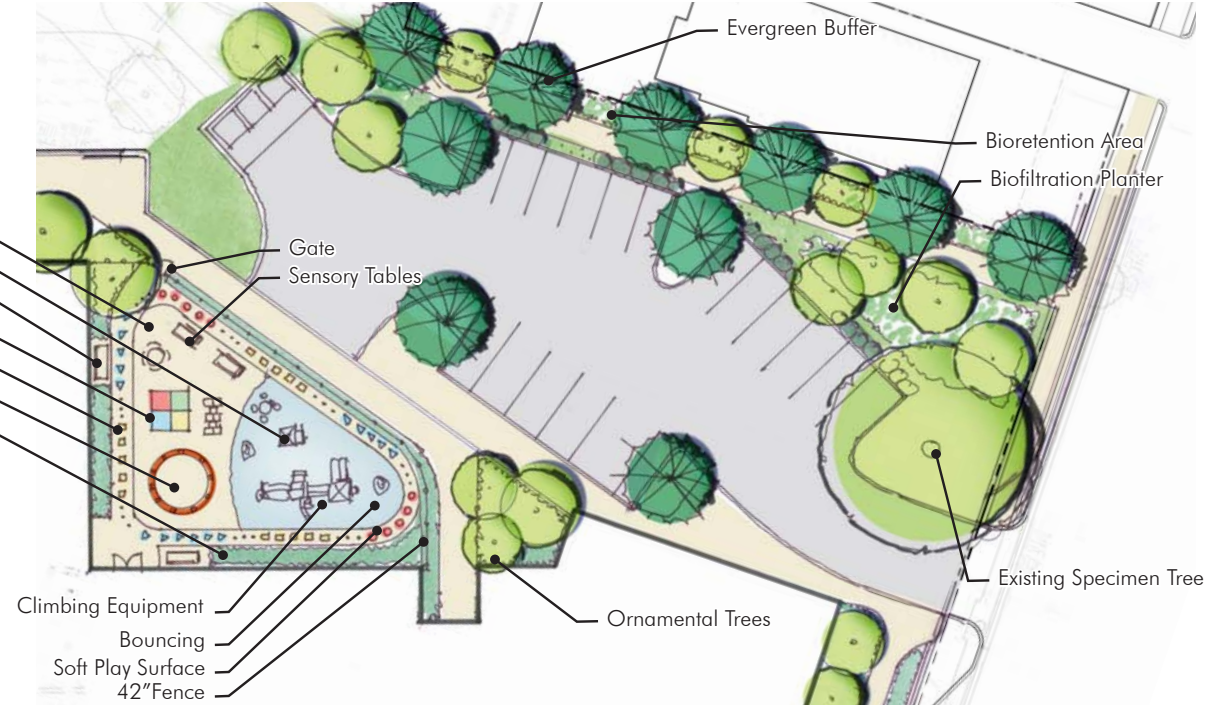
LANDSCAPE CONCEPT - PRE-K & KINDERGARTEN PLAY AREAS

Scale: 1" = 10'-0"
0' 5' 10' 20'



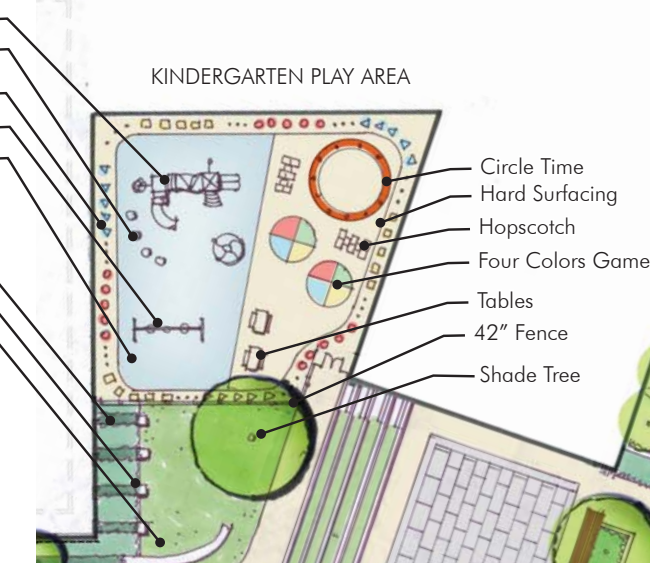
PRE-KINDERGARTEN PLAY AREA

- Hard Surface (Asphalt or Concrete)
- House Play
- Bench
- Four Square
- Tot Track (Asphalt or Concrete)
- Circle Time
- Learning Garden



KINDERGARTEN PLAY AREA

- Climbing Equipment
- Balancing Steps
- Tot Track (Asphalt or Concrete)
- Swings
- Soft Play Surface (Pervious)
- Vegetable Garden
- Pedestal Stone Seats
- Outdoor Classroom



LAFAYETTE ELEMENTARY SCHOOL

LAFAYETTE ELEMENTARY SCHOOL SIT MEETING - OCTOBER 7, 2014

STUDIO39 Landscape Architecture, P.C. 6416 Grovedale Drive, Suite 100-A Alexandria, Virginia 22310 703.719.6500 www.studio39.com

LANDSCAPE CONCEPT - PRIMARY & INTERMEDIATE PLAY AREAS

Scale: 1" = 10'-0"
0' 5' 10' 20'

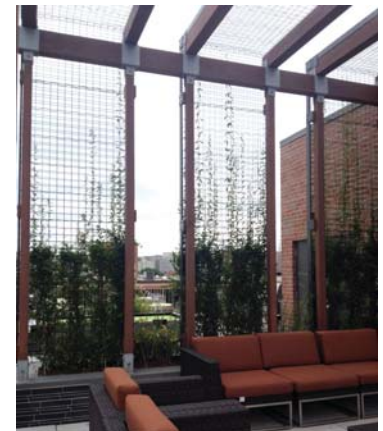
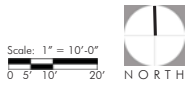


LAFAYETTE ELEMENTARY SCHOOL

LAFAYETTE ELEMENTARY SCHOOL SIT MEETING - OCTOBER 7, 2014

STUDIO39 Landscape Architecture, P.C. 6416 Grovedale Drive, Suite 100-A Alexandria, Virginia 22310 703.719.6500 www.studio39.com

LANDSCAPE CONCEPT - OUTDOOR GALLERY/ CLASSROOM COURTYARD

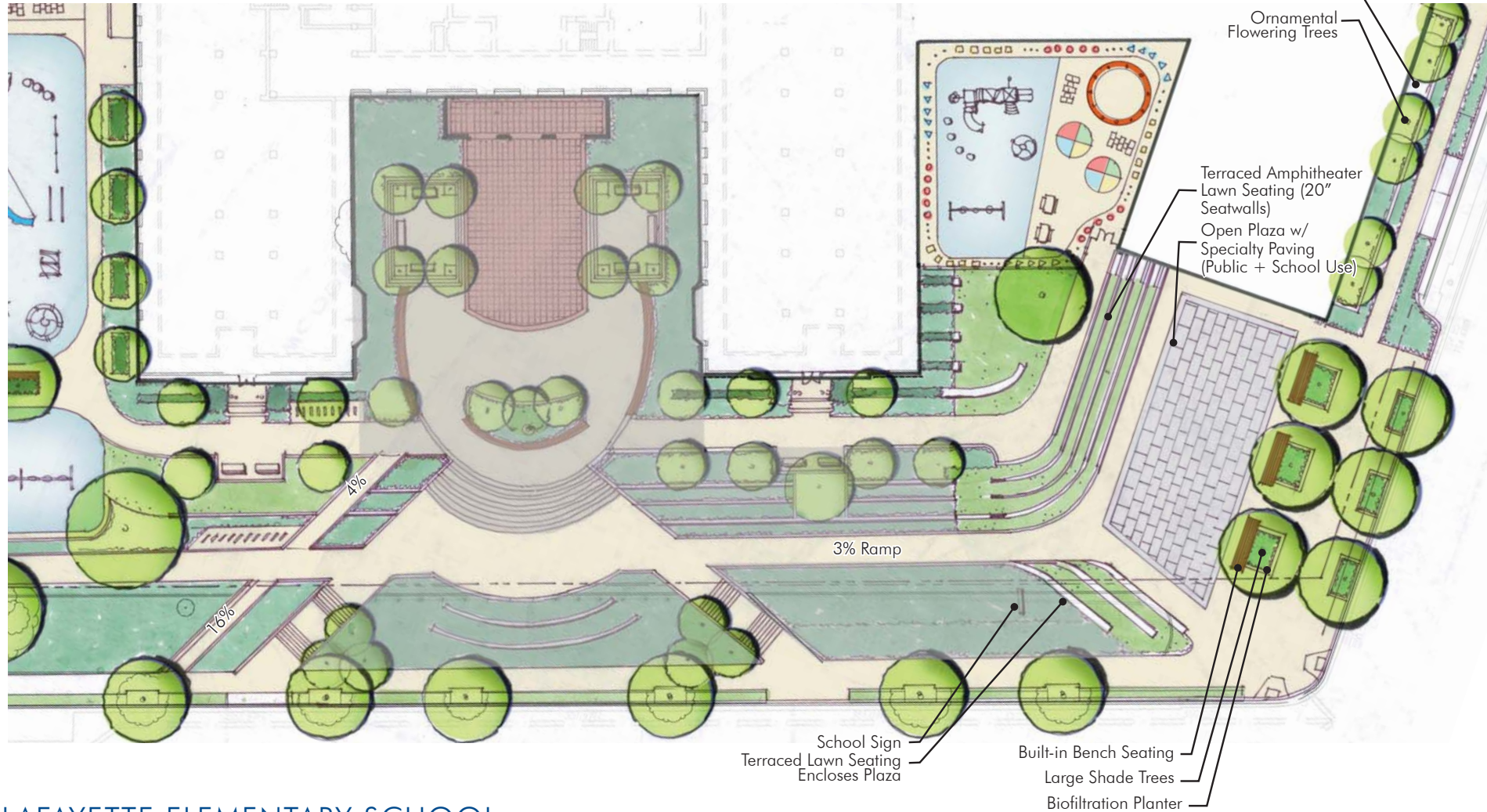
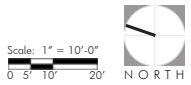


LAFAYETTE ELEMENTARY SCHOOL

LAFAYETTE ELEMENTARY SCHOOL SIT MEETING - OCTOBER 7, 2014

STUDIO39 Landscape Architecture, P.C. 6416 Grovedale Drive, Suite 100-A Alexandria, Virginia 22310 703.719.6500 www.studio39.com

LANDSCAPE CONCEPT - CORNER PLAZA

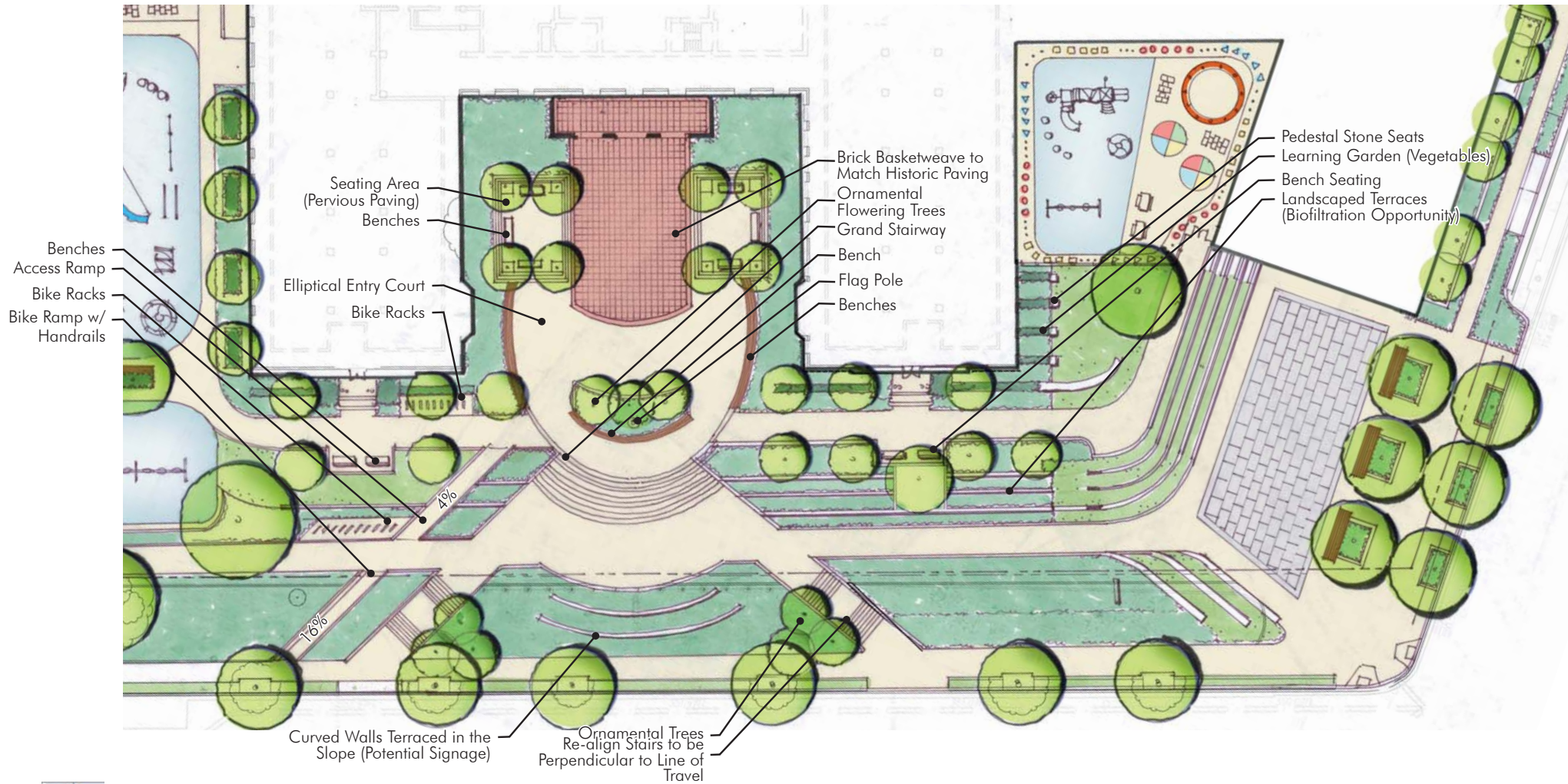
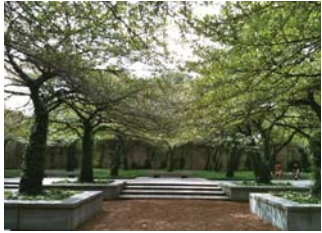
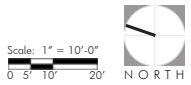


LAFAYETTE ELEMENTARY SCHOOL

LAFAYETTE ELEMENTARY SCHOOL SIT MEETING - OCTOBER 7, 2014

STUDIO39 Landscape Architecture, P.C. 6416 Grovedale Drive, Suite 100-A Alexandria, Virginia 22310 703.719.6500 www.studio39.com

LANDSCAPE CONCEPT - ARRIVAL COURTYARD

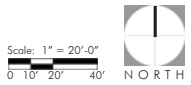


LAFAYETTE ELEMENTARY SCHOOL

LAFAYETTE ELEMENTARY SCHOOL SIT MEETING - OCTOBER 7, 2014

STUDIO39 Landscape Architecture, P.C. 6416 Grovedale Drive, Suite 100-A Alexandria, Virginia 22310 703.719.6500 www.studio39.com

LANDSCAPE CONCEPT - ALTERNATIVE SITE PLAN

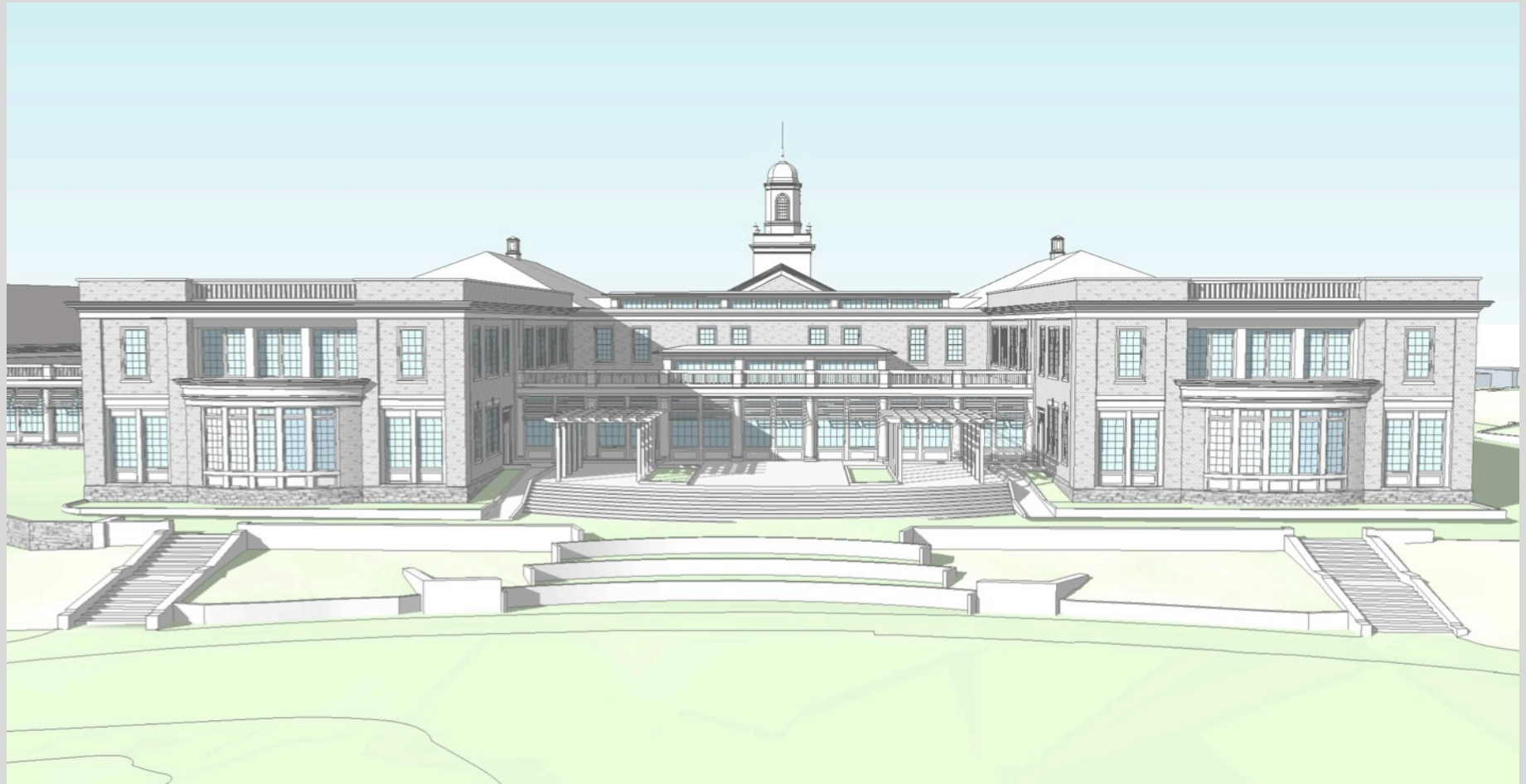


LAFAYETTE ELEMENTARY SCHOOL

LAFAYETTE ELEMENTARY SCHOOL SIT MEETING - OCTOBER 7, 2014

STUDIO39 Landscape Architecture, P.C. 6416 Grovedale Drive, Suite 100-A Alexandria, Virginia 22310 703.719.6500 www.studio39.com

Schematic Massing – From Ball Fields – Elevated Viewpoint



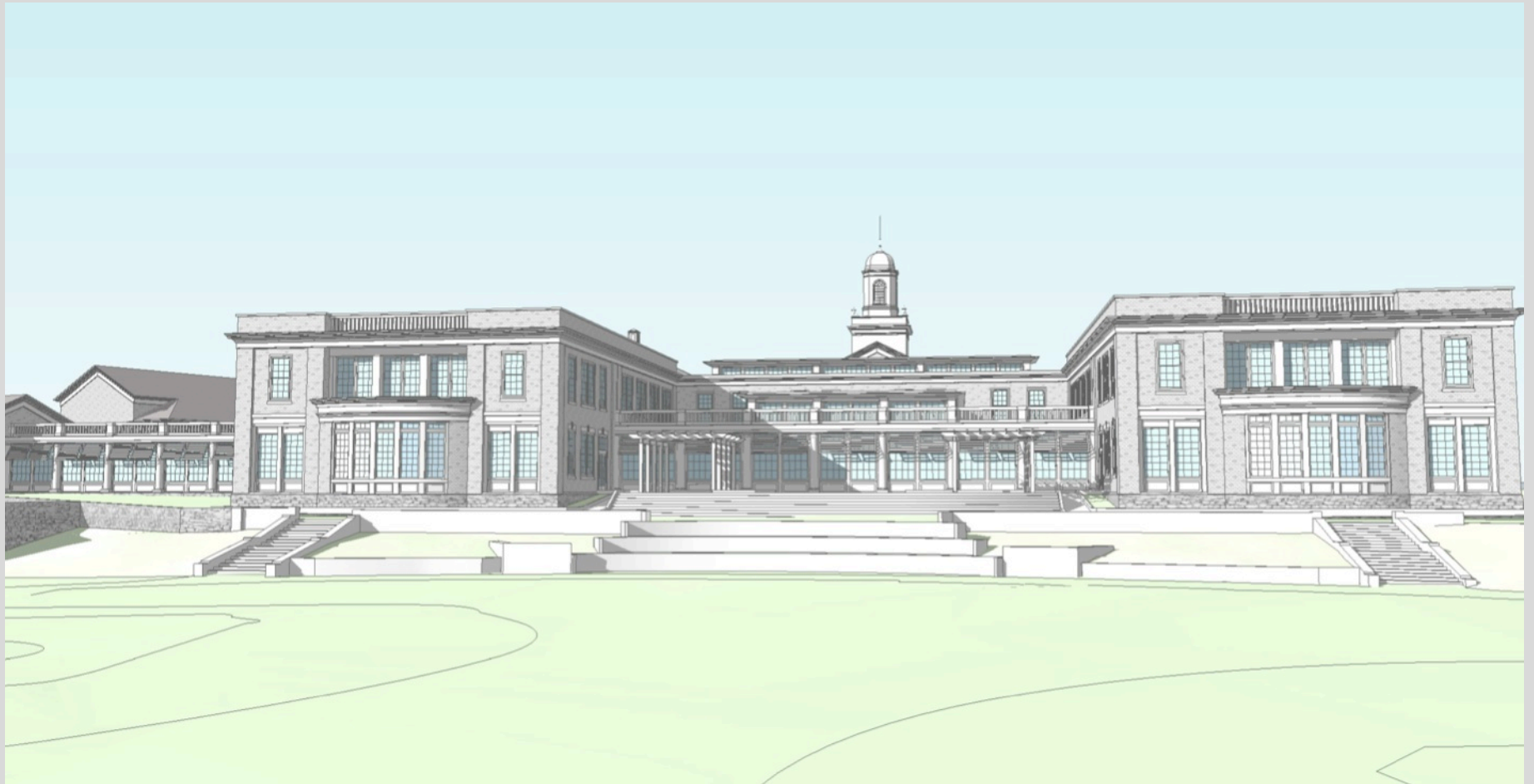
LAFAYETTE ELEMENTARY SCHOOL SIT MEETING – OCTOBER 7, 2014



LAFAYETTE ELEMENTARY SCHOOL

HARTMAN-COX ARCHITECTS / GRIMM + PARKER ARCHITECTS
202.333.6446 / 301.595.1000

Schematic Massing – From Ball Fields



LAFAYETTE ELEMENTARY SCHOOL SIT MEETING – OCTOBER 7, 2014



LAFAYETTE ELEMENTARY SCHOOL

HARTMAN-COX ARCHITECTS / GRIMM + PARKER ARCHITECTS
202.333.6446 / 301.595.1000

LAFAYETTE ELEMENTARY SCHOOL

A SCHOOL ON THE PARK



S I T MEETING #7

LAFAYETTE ELEMENTARY SCHOOL SIT MEETING – OCTOBER 7, 2014



LAFAYETTE ELEMENTARY SCHOOL

HARTMAN-COX ARCHITECTS / GRIMM + PARKER ARCHITECTS
202.333.6446 / 301.595.1000