

LAFAYETTE ELEMENTARY SCHOOL

A SCHOOL ON THE PARK



S I T MEETING #12

LAFAYETTE ELEMENTARY SCHOOL SIT MEETING #12 – OCTOBER 27, 2014



LAFAYETTE ELEMENTARY SCHOOL

HARTMAN-COX ARCHITECTS / GRIMM + PARKER ARCHITECTS
202.333.6446 / 301.595.1000

AGENDA – SIT MEETING #12

- | | | |
|---|-------------------|--------------------|
| • DGS Update | 10 minutes | 6:00 – 6:10 |
| • Follow-up Architectural Issues | 40 minutes | 6:10 – 6:50 |
| • Follow-up Landscape Issues | 40 minutes | 6:50 – 7:30 |
| • Wrap Up | 5 minutes | 7:30 – 7:35 |

LAFAYETTE ELEMENTARY SCHOOL SIT MEETING #12 – OCTOBER 27, 2014



LAFAYETTE ELEMENTARY SCHOOL

HARTMAN-COX ARCHITECTS / GRIMM + PARKER ARCHITECTS
202.333.6446 / 301.595.1000

KEY ISSUES FROM PREVIOUS MEETING

- **Issue #1 – Clarifying Ingress and Circulation**
- **Issue #2 – Connecting “Great Hall” and “Main Street” to Park**
- **Issue #3 – Improving Internal Flow to and from Cafetorium**

LAFAYETTE ELEMENTARY SCHOOL SIT MEETING #12 – OCTOBER 27, 2014



LAFAYETTE ELEMENTARY SCHOOL

HARTMAN-COX ARCHITECTS / GRIMM + PARKER ARCHITECTS
202.333.6446 / 301.595.1000

ISSUE #1 – INGRESS & CIRCULATION

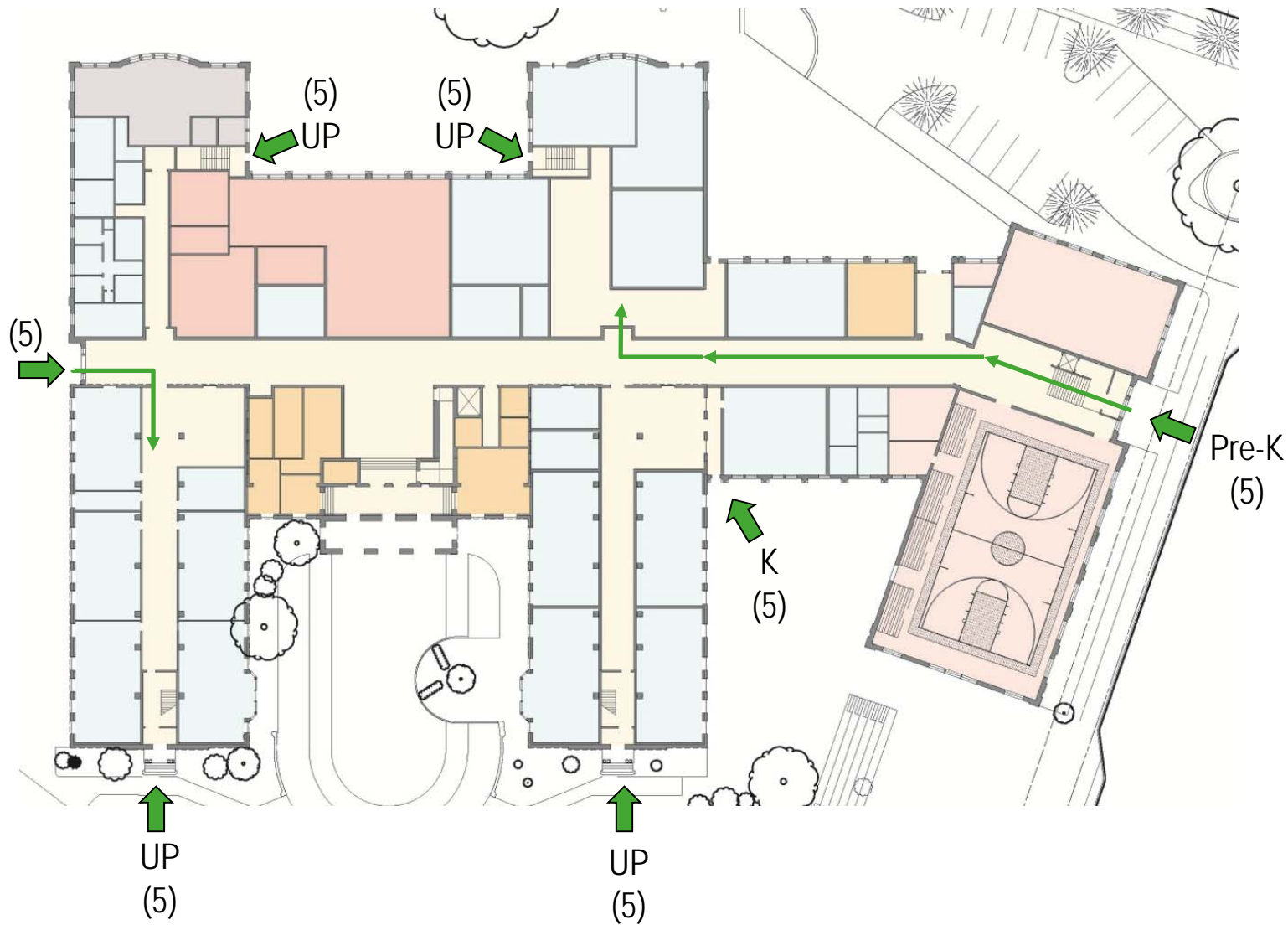
LAFAYETTE ELEMENTARY SCHOOL SIT MEETING #12 – OCTOBER 27, 2014



LAFAYETTE ELEMENTARY SCHOOL

HARTMAN-COX ARCHITECTS / GRIMM + PARKER ARCHITECTS
202.333.6446 / 301.595.1000

CIRCULATION DIAGRAM - ARRIVAL



LAFAYETTE ELEMENTARY SCHOOL SIT MEETING #12 – OCTOBER 27, 2014

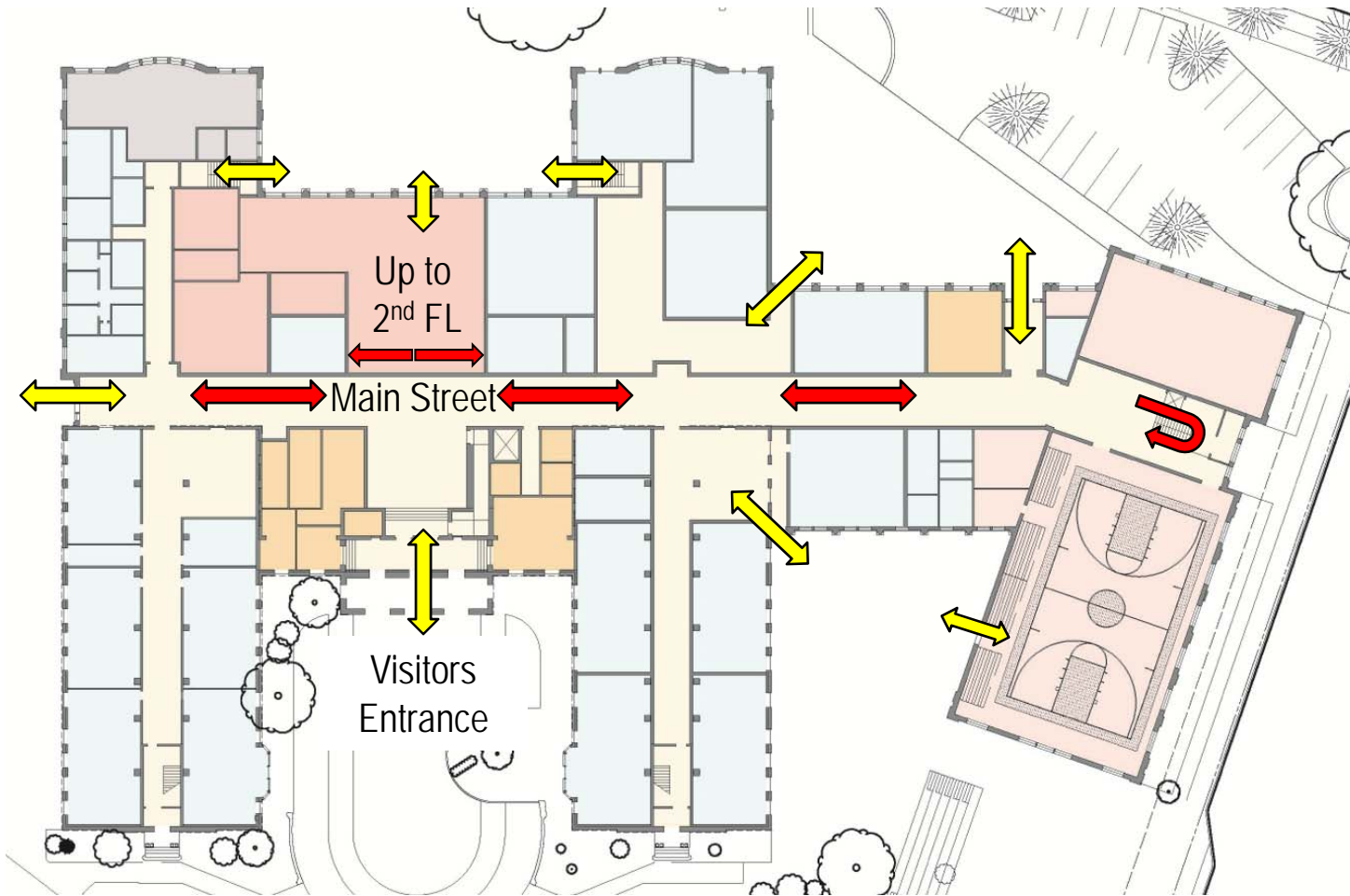


LAFAYETTE ELEMENTARY SCHOOL

HARTMAN-COX ARCHITECTS / GRIMM + PARKER ARCHITECTS
202.333.6446 / 301.595.1000

 Arrival

CIRCULATION DIAGRAM – DAYTIME USE




LAFAYETTE ELEMENTARY SCHOOL SIT MEETING #12 – OCTOBER 27, 2014



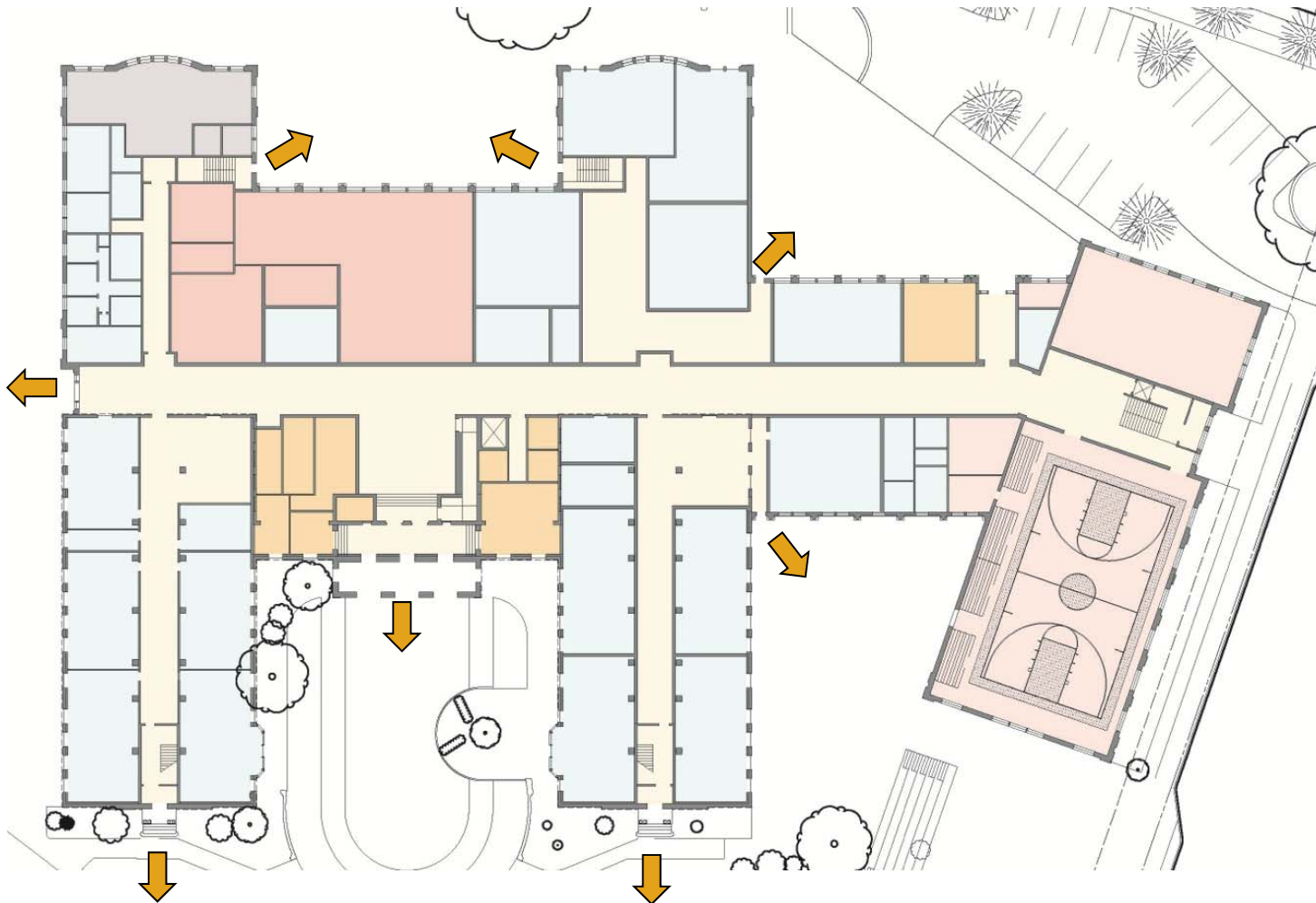
LAFAYETTE ELEMENTARY SCHOOL

HARTMAN-COX ARCHITECTS / GRIMM + PARKER ARCHITECTS
202.333.6446 / 301.595.1000

 Daytime Use - Exterior

 Daytime Use - Interior

CIRCULATION DIAGRAM - DISMISSAL



LAFAYETTE ELEMENTARY SCHOOL SIT MEETING #12 – OCTOBER 27, 2014

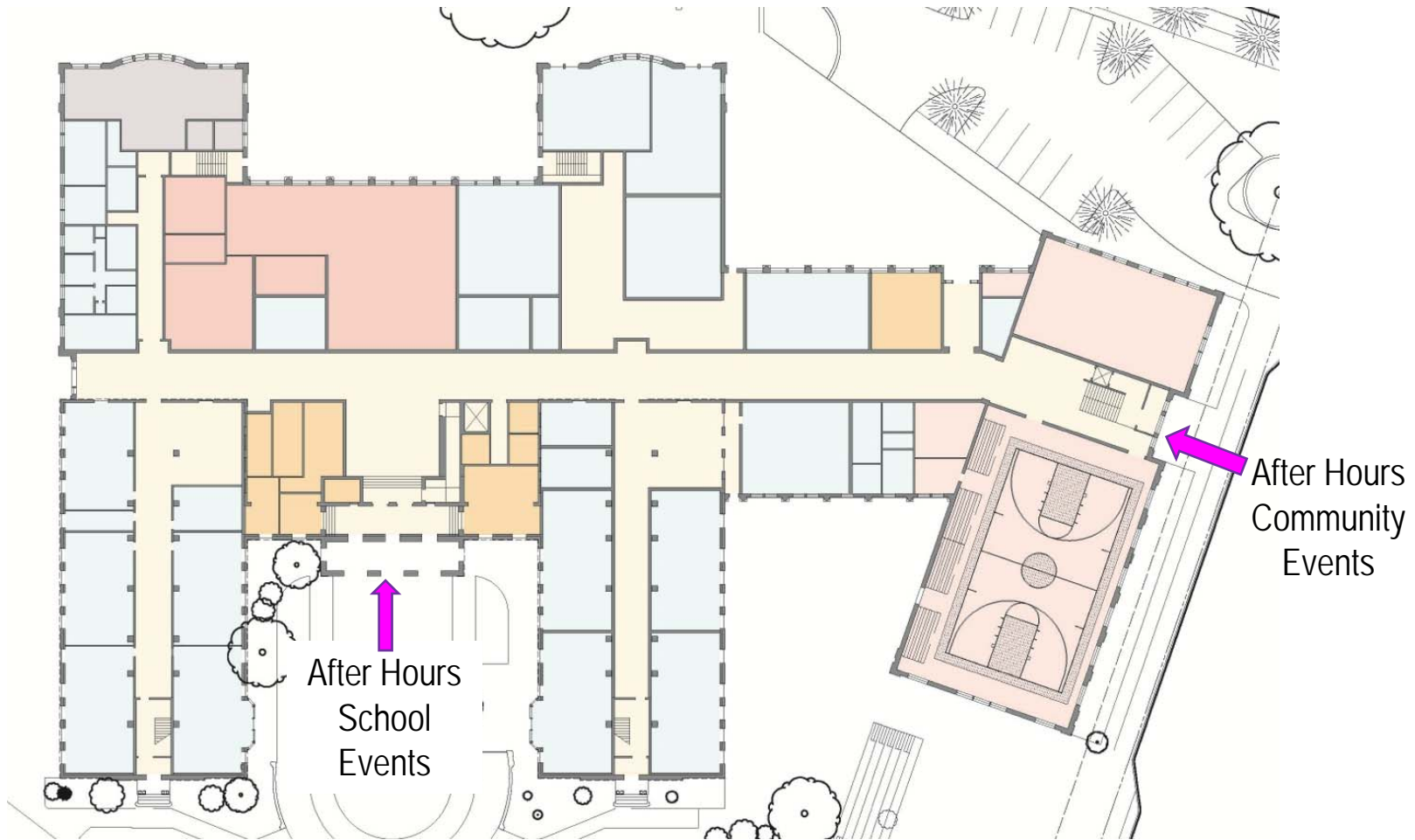


LAFAYETTE ELEMENTARY SCHOOL

HARTMAN-COX ARCHITECTS / GRIMM + PARKER ARCHITECTS
202.333.6446 / 301.595.1000

 Dismissal

CIRCULATION DIAGRAM - AFTER HOURS USE



LAFAYETTE ELEMENTARY SCHOOL SIT MEETING #12 – OCTOBER 27, 2014



LAFAYETTE ELEMENTARY SCHOOL

HARTMAN-COX ARCHITECTS / GRIMM + PARKER ARCHITECTS
202.333.6446 / 301.595.1000



After Hours Use

ISSUE #2 – CONNECTING GREAT HALL & MAIN STREET TO PARK

LAFAYETTE ELEMENTARY SCHOOL SIT MEETING #12 – OCTOBER 27, 2014

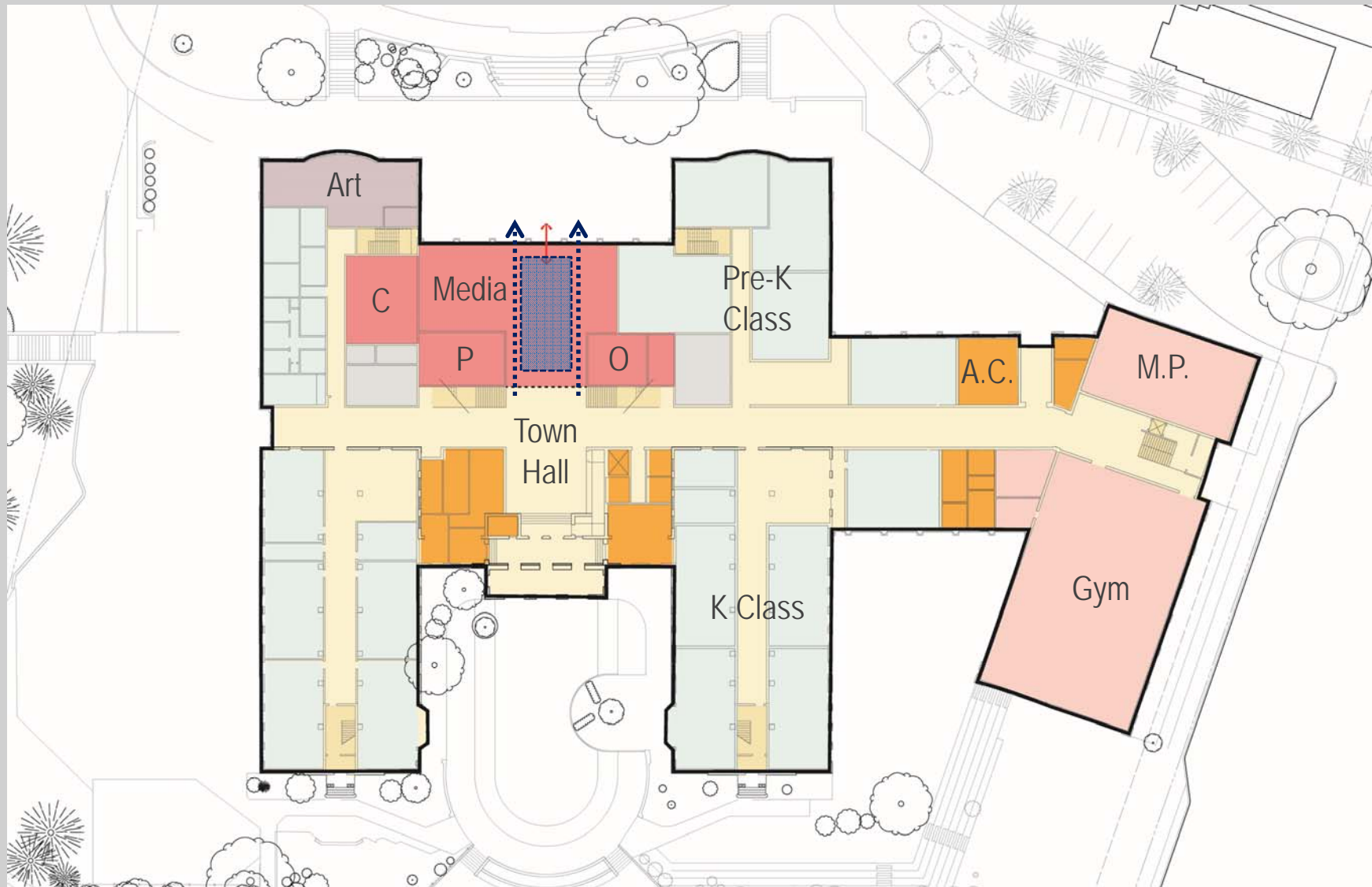


LAFAYETTE ELEMENTARY SCHOOL

HARTMAN-COX ARCHITECTS / GRIMM + PARKER ARCHITECTS
202.333.6446 / 301.595.1000

First Floor

ISSUE #2 – CONNECTING GREAT HALL & MAIN STREET TO PARK OPTION A – OPEN MEDIA CENTER



LAFAYETTE ELEMENTARY SCHOOL SIT MEETING #12 – OCTOBER 27, 2014

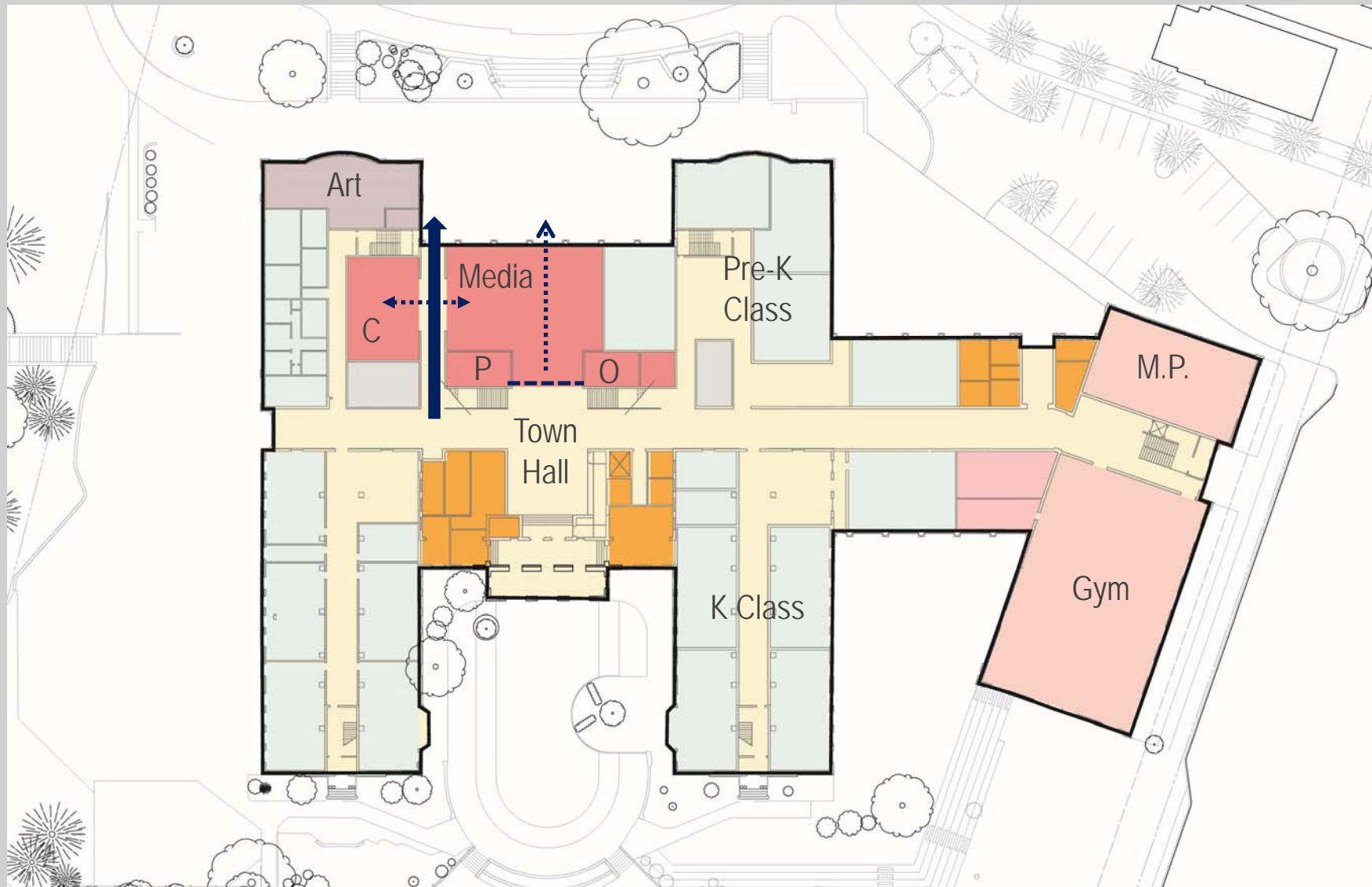


LAFAYETTE ELEMENTARY SCHOOL

HARTMAN-COX ARCHITECTS / GRIMM + PARKER ARCHITECTS
202.333.6446 / 301.595.1000

First Floor

ISSUE #2 – CONNECTING GREAT HALL & MAIN STREET TO PARK OPTION B – SPLIT MEDIA CENTER



LAFAYETTE ELEMENTARY SCHOOL SIT MEETING #12 – OCTOBER 27, 2014

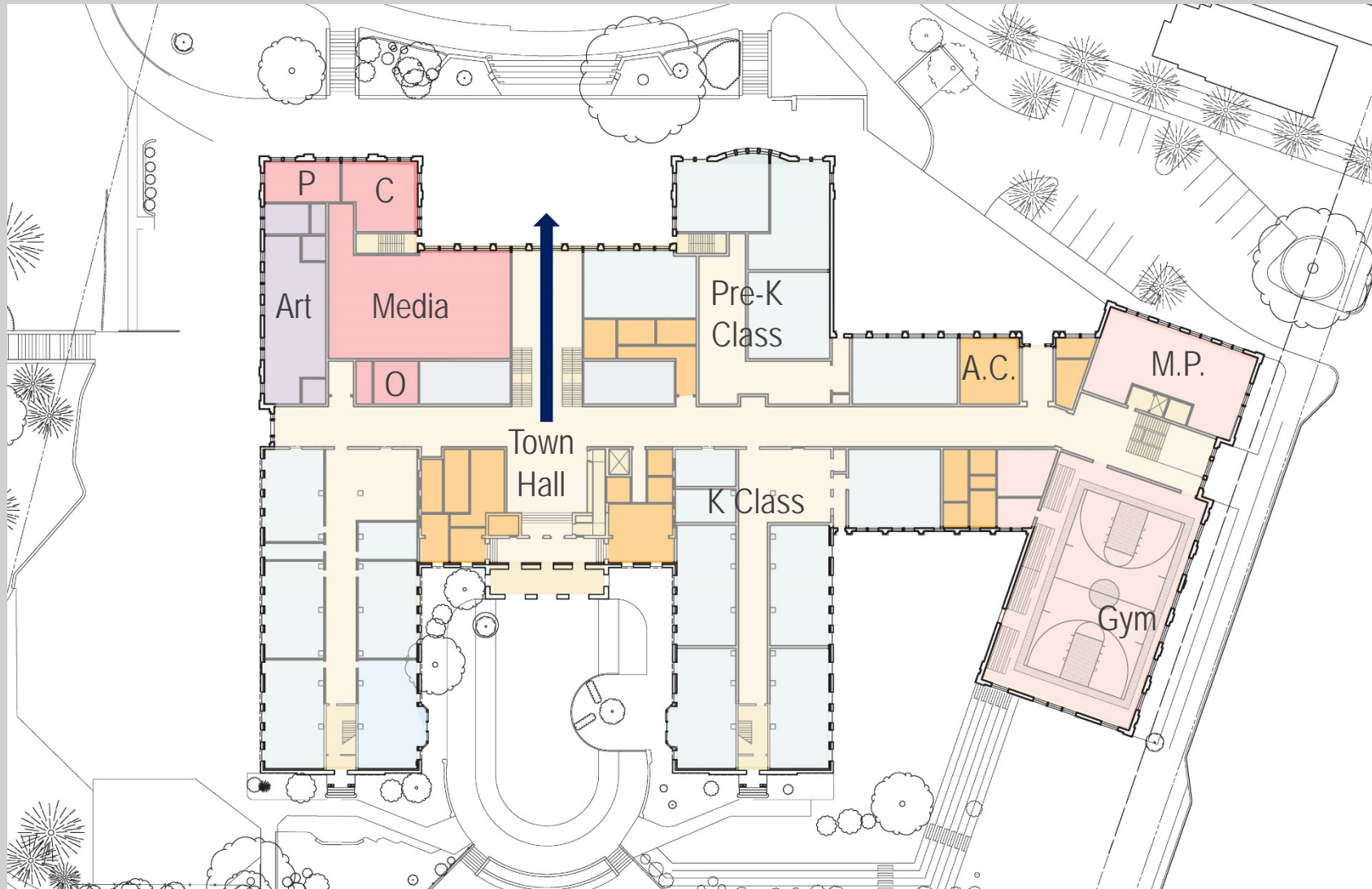


LAFAYETTE ELEMENTARY SCHOOL

HARTMAN-COX ARCHITECTS / GRIMM + PARKER ARCHITECTS
202.333.6446 / 301.595.1000

First Floor

ISSUE #2 – CONNECTING GREAT HALL & MAIN STREET TO PARK OPTION C – RELOCATE MEDIA CENTER



LAFAYETTE ELEMENTARY SCHOOL SIT MEETING #12 – OCTOBER 27, 2014



LAFAYETTE ELEMENTARY SCHOOL

HARTMAN-COX ARCHITECTS / GRIMM + PARKER ARCHITECTS
202.333.6446 / 301.595.1000

ISSUE #3 – IMPROVING INTERNAL FLOW

LAFAYETTE ELEMENTARY SCHOOL SIT MEETING #12 – OCTOBER 27, 2014

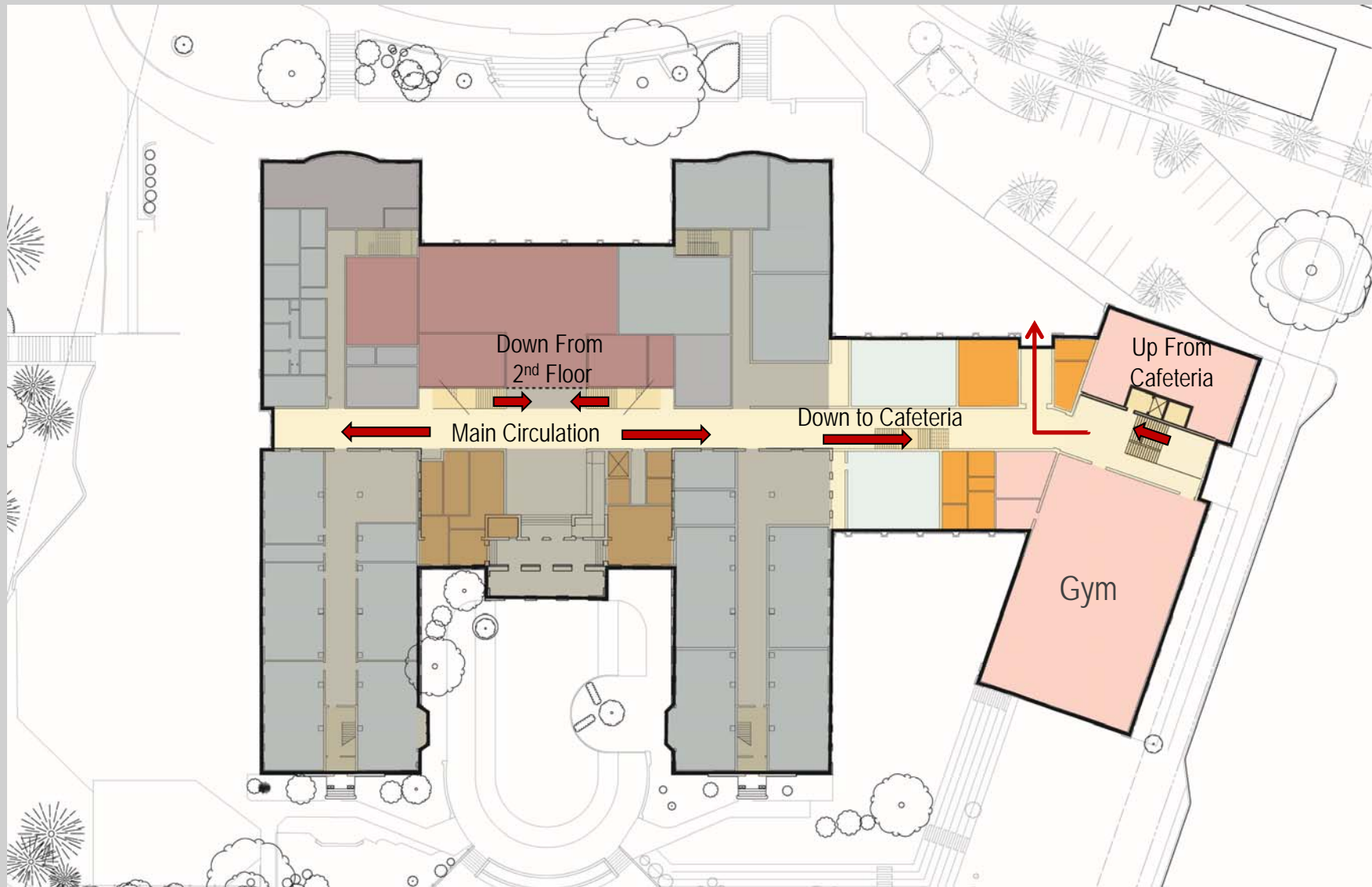


LAFAYETTE ELEMENTARY SCHOOL

HARTMAN-COX ARCHITECTS / GRIMM + PARKER ARCHITECTS
202.333.6446 / 301.595.1000

First Floor

ISSUE #3 – IMPROVING INTERNAL FLOW OPTION A – INTRODUCE NEW OPEN STAIR



LAFAYETTE ELEMENTARY SCHOOL SIT MEETING #12 – OCTOBER 27, 2014

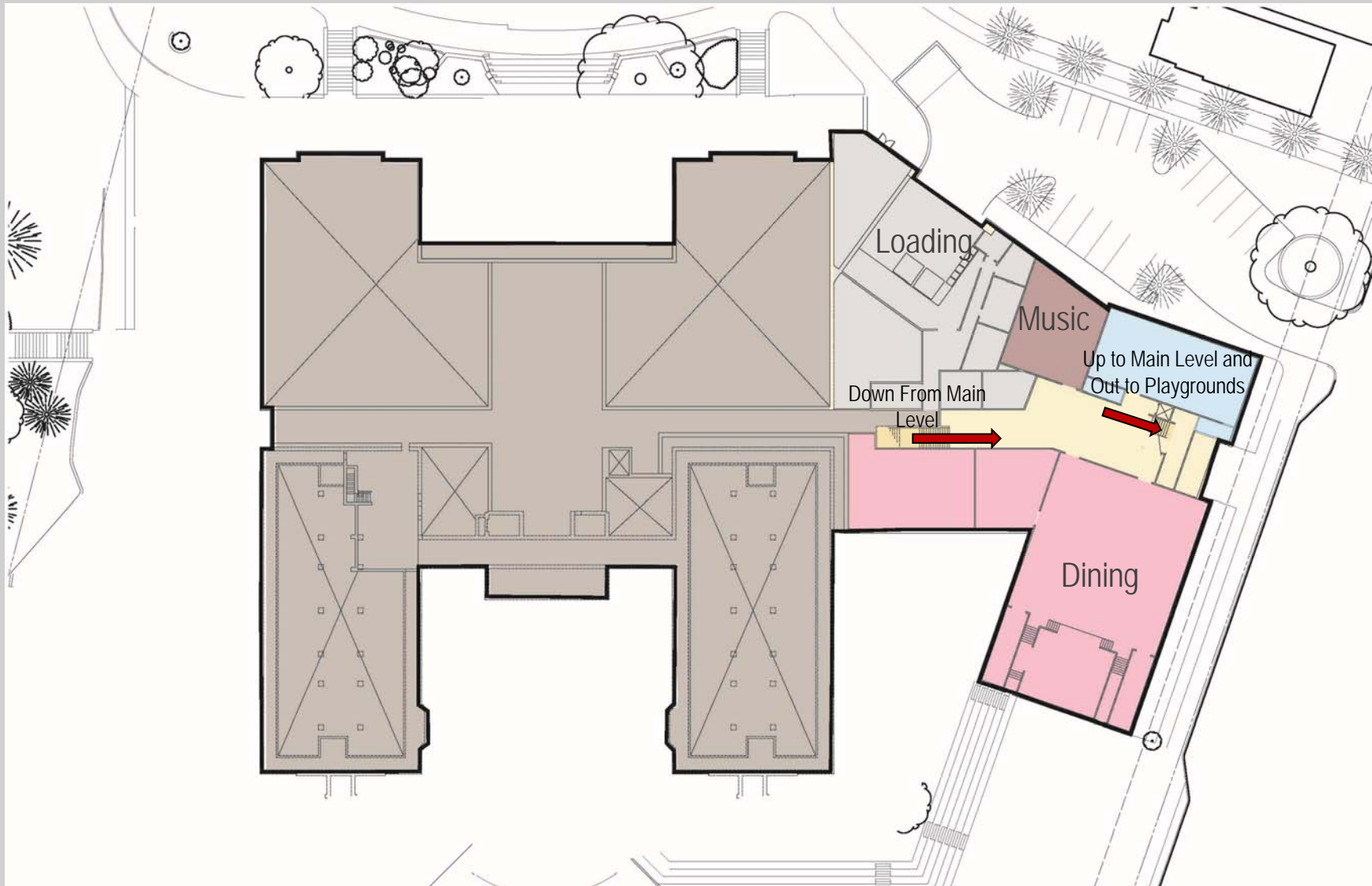


LAFAYETTE ELEMENTARY SCHOOL

HARTMAN-COX ARCHITECTS / GRIMM + PARKER ARCHITECTS
202.333.6446 / 301.595.1000

Lower Level

ISSUE #3 – IMPROVING INTERNAL FLOW OPTION A – INTRODUCE NEW OPEN STAIR



LAFAYETTE ELEMENTARY SCHOOL SIT MEETING #12 – OCTOBER 27, 2014

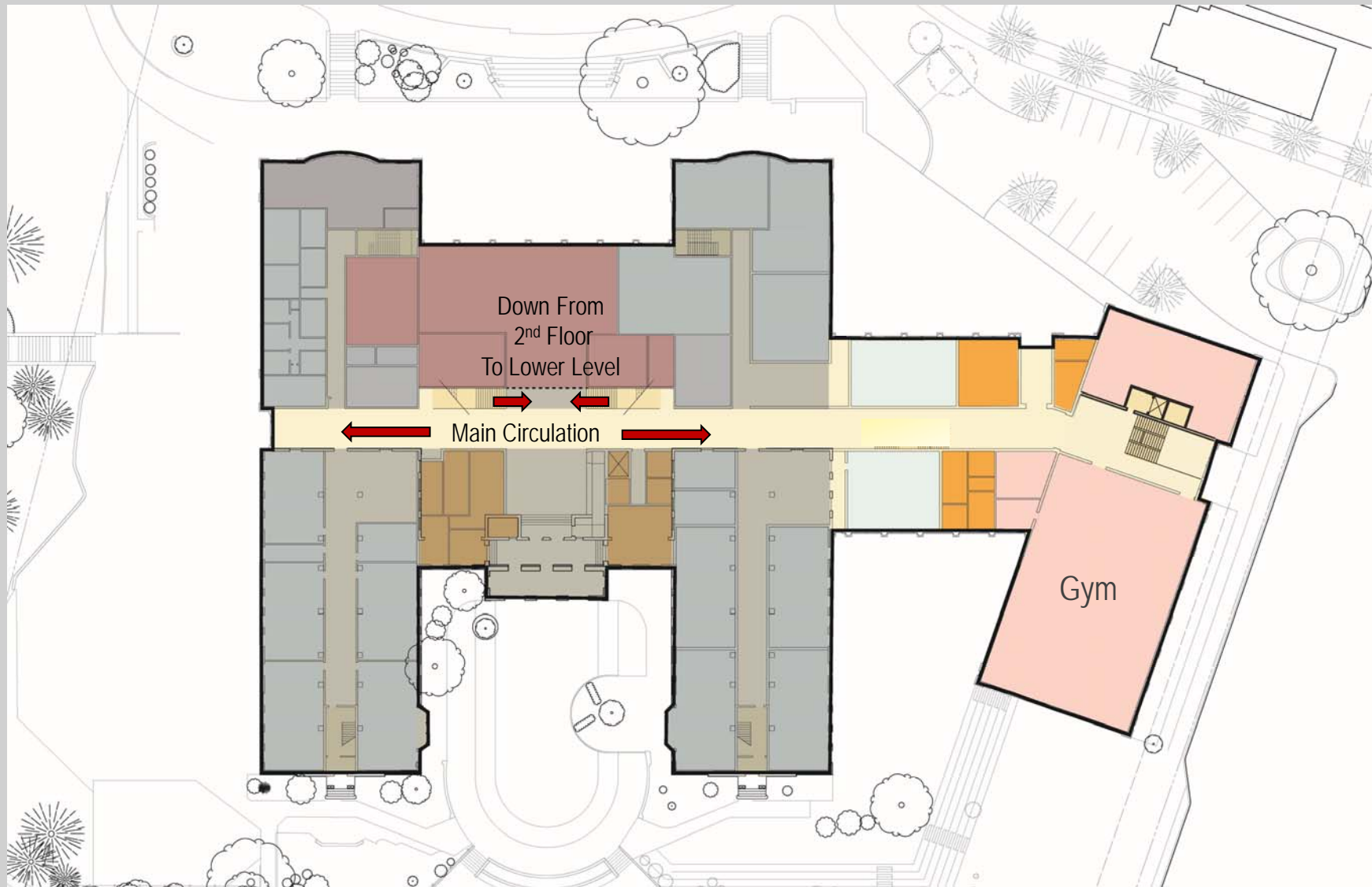


LAFAYETTE ELEMENTARY SCHOOL

HARTMAN-COX ARCHITECTS / GRIMM + PARKER ARCHITECTS
202.333.6446 / 301.595.1000

First Floor

ISSUE #3 – IMPROVING INTERNAL FLOW OPTION B – RELOCATE CAFETORIUM



LAFAYETTE ELEMENTARY SCHOOL SIT MEETING #12 – OCTOBER 27, 2014

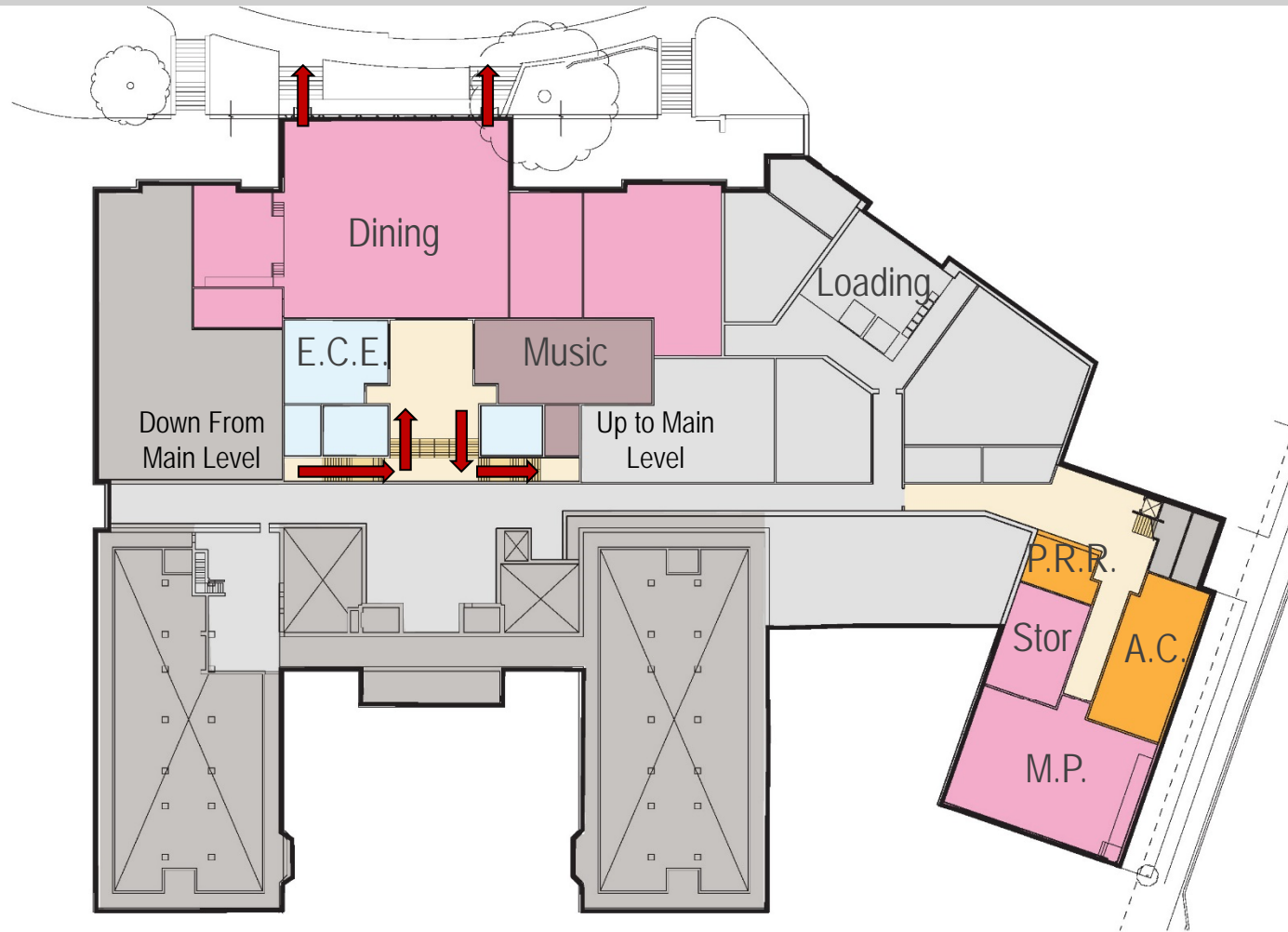


LAFAYETTE ELEMENTARY SCHOOL

HARTMAN-COX ARCHITECTS / GRIMM + PARKER ARCHITECTS
202.333.6446 / 301.595.1000

Lower Level

ISSUE #3 – IMPROVING INTERNAL FLOW OPTION B – RELOCATE CAFETORIUM



LAFAYETTE ELEMENTARY SCHOOL SIT MEETING #12 – OCTOBER 27, 2014



LAFAYETTE ELEMENTARY SCHOOL

HARTMAN-COX ARCHITECTS / GRIMM + PARKER ARCHITECTS
202.333.6446 / 301.595.1000

Massing Impact

ISSUE #3 – IMPROVING INTERNAL FLOW
OPTION B – RELOCATION OF CAFETORIUM



LAFAYETTE ELEMENTARY SCHOOL SIT MEETING #12 – OCTOBER 27, 2014



LAFAYETTE ELEMENTARY SCHOOL

HARTMAN-COX ARCHITECTS / GRIMM + PARKER ARCHITECTS
202.333.6446 / 301.595.1000

Massing Impact

ISSUE #3 – IMPROVING INTERNAL FLOW
OPTION B – RELOCATION OF CAFETORIUM



LAFAYETTE ELEMENTARY SCHOOL SIT MEETING #12 – OCTOBER 27, 2014



LAFAYETTE ELEMENTARY SCHOOL

HARTMAN-COX ARCHITECTS / GRIMM + PARKER ARCHITECTS
202.333.6446 / 301.595.1000

LAFAYETTE ELEMENTARY SCHOOL
A SCHOOL ON THE PARK

LANDSCAPE CONCEPT



LANDSCAPE CONCEPT - OVERALL SITE PLAN



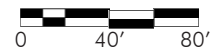
NORTHAMPTON STREET NW

33RD STREET NW

LAFAYETTE ELEMENTARY SCHOOL

LAFAYETTE ELEMENTARY SCHOOL SIT MEETING - OCTOBER 27, 2014

STUDIO39 Landscape Architecture, P.C. 6416 Grovedale Drive, Suite 100-A Alexandria, Virginia 22310 703.719.6500 www.studio39.com



NORTH

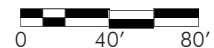
LANDSCAPE CONCEPT - AREAS OF FOCUS



LAFAYETTE ELEMENTARY SCHOOL

LAFAYETTE ELEMENTARY SCHOOL SIT MEETING - OCTOBER 27, 2014

STUDIO39 Landscape Architecture, P.C. 6416 Grovedale Drive, Suite 100-A Alexandria, Virginia 22310 703.719.6500 www.studio39.com



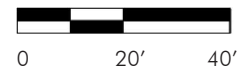
LANDSCAPE CONCEPT - NORTH PLAY AREA



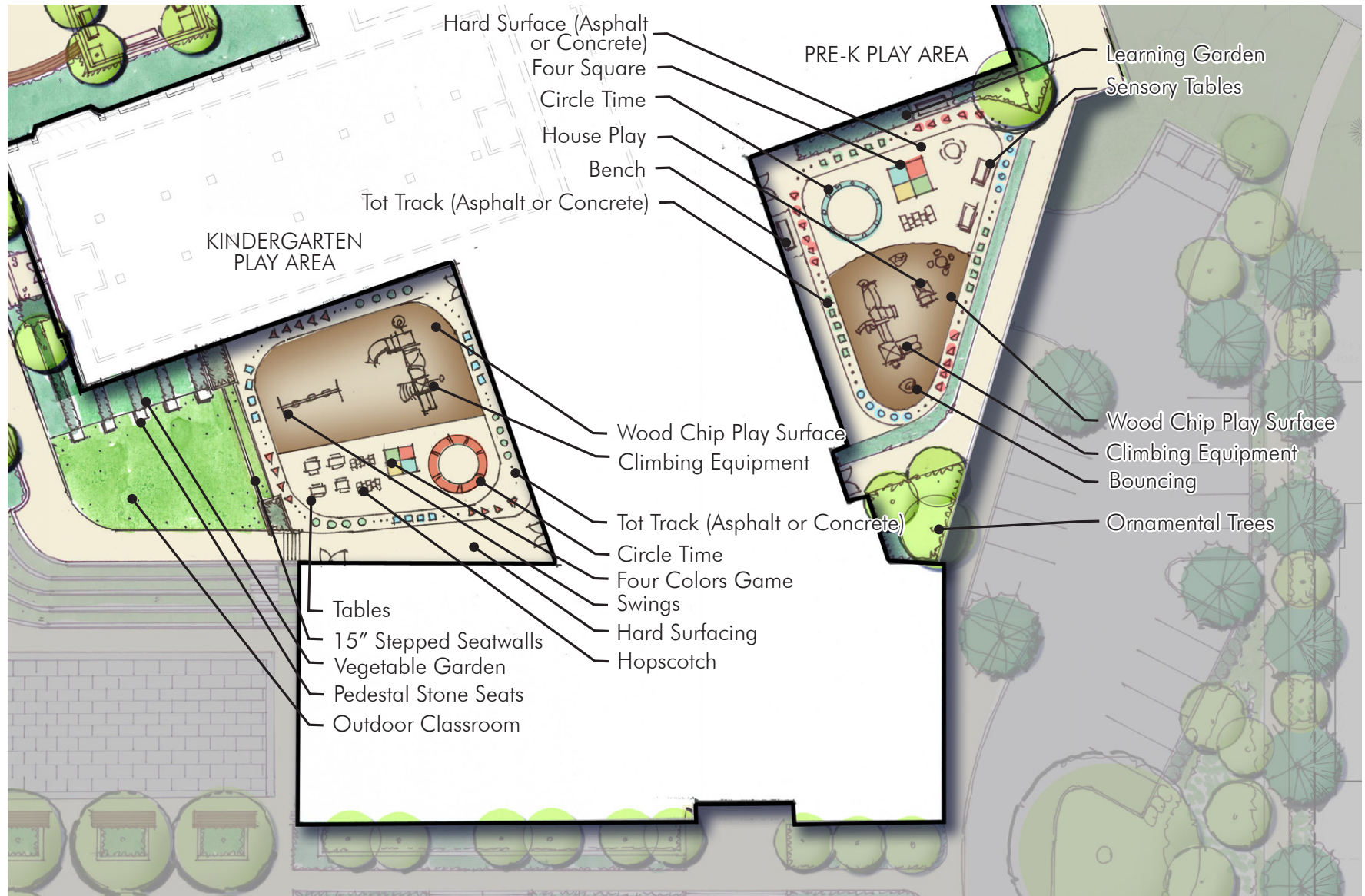
LAFAYETTE ELEMENTARY SCHOOL

LAFAYETTE ELEMENTARY SCHOOL SIT MEETING - OCTOBER 27, 2014

STUDIO39 Landscape Architecture, P.C. 6416 Grovedale Drive, Suite 100-A Alexandria, Virginia 22310 703.719.6500 www.studio39.com



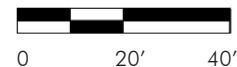
LANDSCAPE CONCEPT - SOUTH PLAY AREA



LAFAYETTE ELEMENTARY SCHOOL

LAFAYETTE ELEMENTARY SCHOOL SIT MEETING - OCTOBER 27, 2014

STUDIO39 Landscape Architecture, P.C. 6416 Grovedale Drive, Suite 100-A Alexandria, Virginia 22310 703.719.6500 www.studio39.com



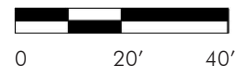
LANDSCAPE CONCEPT - PEDESTRIAN PATH & GREEN BUFFER



LAFAYETTE ELEMENTARY SCHOOL

LAFAYETTE ELEMENTARY SCHOOL SIT MEETING - OCTOBER 27, 2014

STUDIO39 Landscape Architecture, P.C. 6416 Grovedale Drive, Suite 100-A Alexandria, Virginia 22310 703.719.6500 www.studio39.com



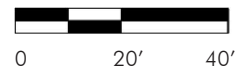
LANDSCAPE CONCEPT - EAST COURT FLEXIBLE USE SPACE



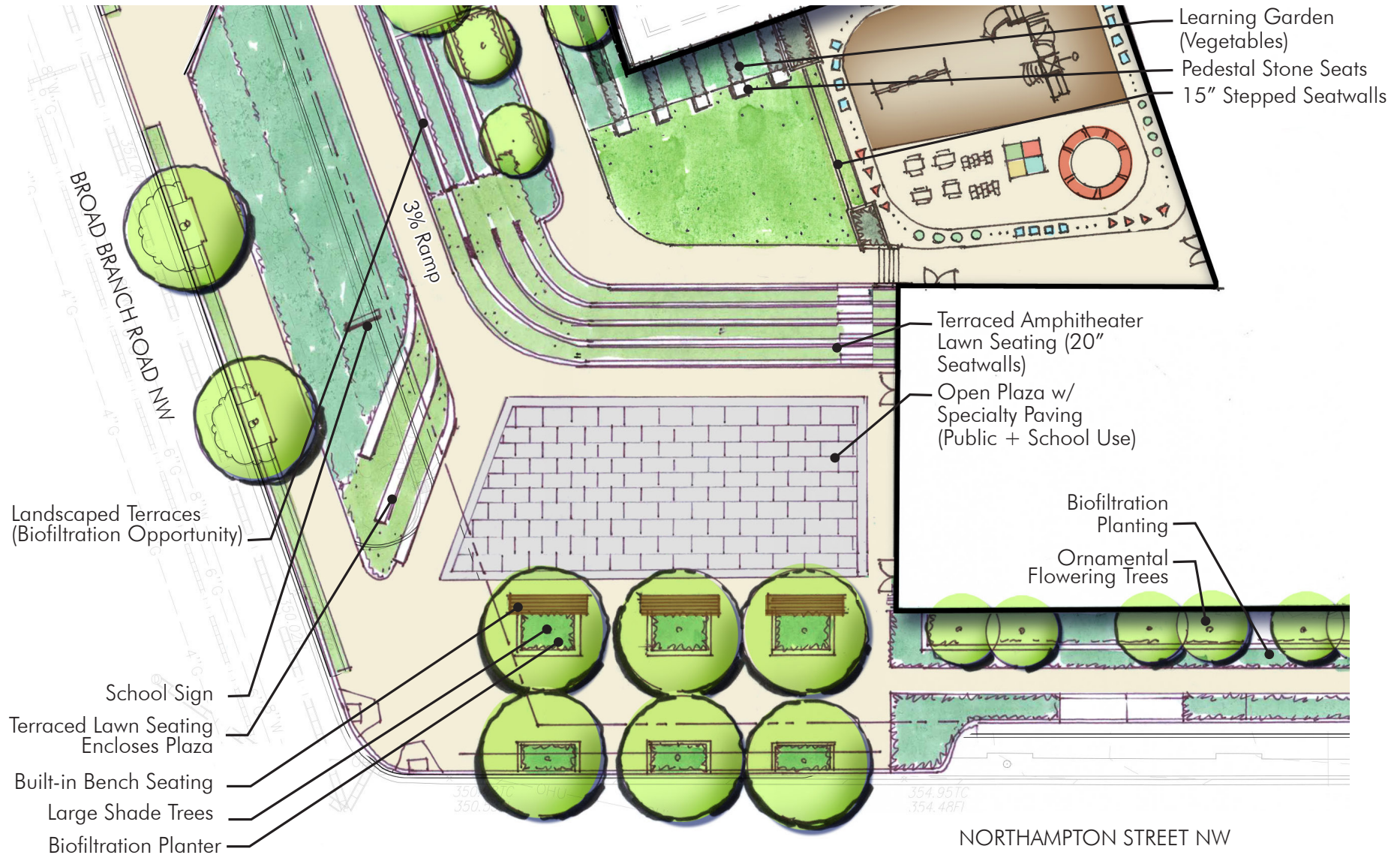
LAFAYETTE ELEMENTARY SCHOOL

LAFAYETTE ELEMENTARY SCHOOL SIT MEETING - OCTOBER 27, 2014

STUDIO39 Landscape Architecture, P.C. 6416 Grovedale Drive, Suite 100-A Alexandria, Virginia 22310 703.719.6500 www.studio39.com



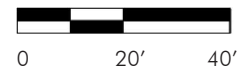
LANDSCAPE CONCEPT - CORNER PLAZA



LAFAYETTE ELEMENTARY SCHOOL

LAFAYETTE ELEMENTARY SCHOOL SIT MEETING - OCTOBER 27, 2014

STUDIO39 Landscape Architecture, P.C. 6416 Grovedale Drive, Suite 100-A Alexandria, Virginia 22310 703.719.6500 www.studio39.com



LANDSCAPE CONCEPT - CORNER PLAZA SKETCH

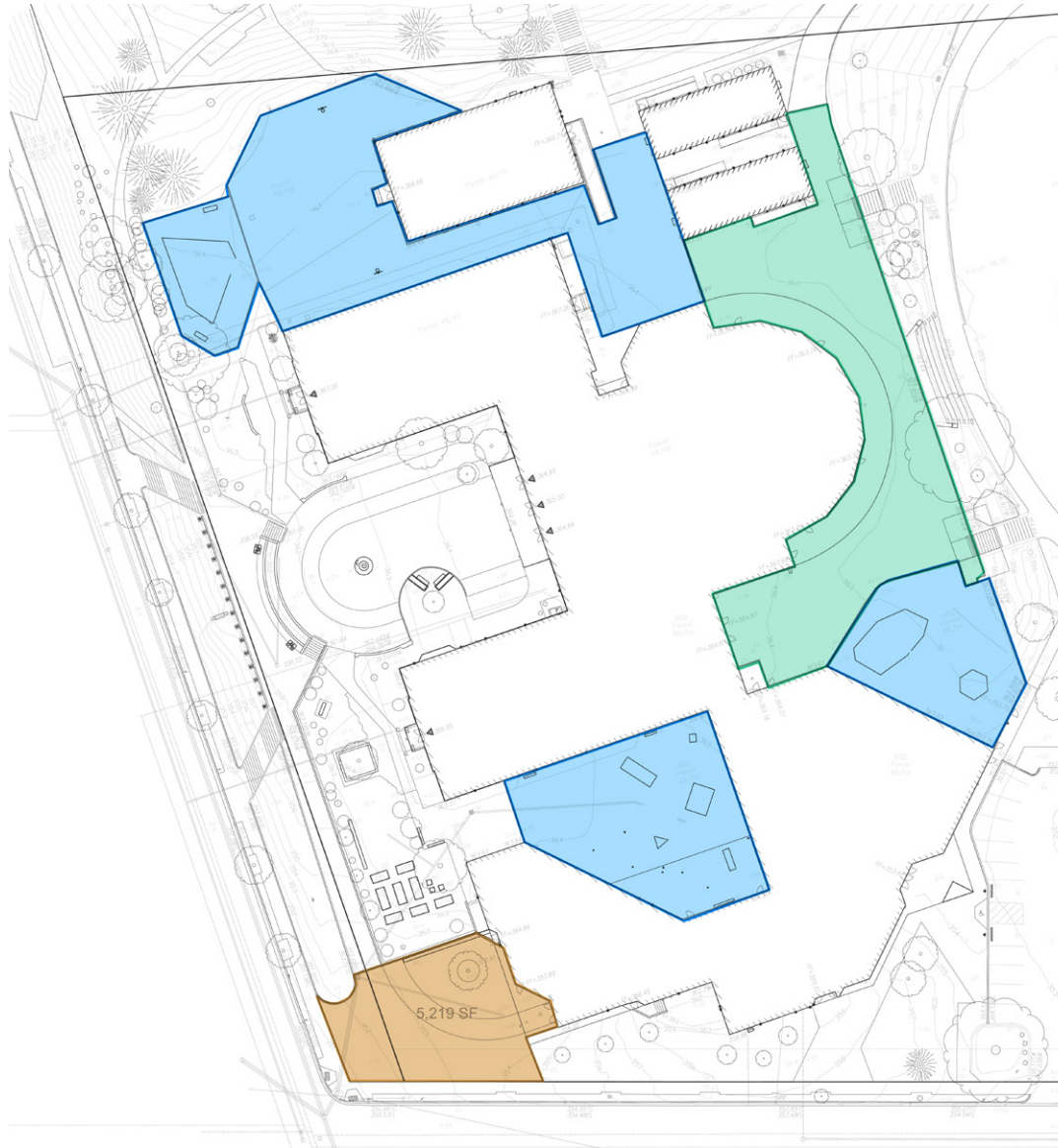





LAFAYETTE ELEMENTARY SCHOOL

LAFAYETTE ELEMENTARY SCHOOL SIT MEETING - OCTOBER 27, 2014

STUDIO39 Landscape Architecture, P.C. 6416 Grovedale Drive, Suite 100-A Alexandria, Virginia 22310 703.719.6500 www.studio39.com

LANDSCAPE CONCEPT - EXISTING SITE OUTDOOR SPACES



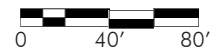
	EXISTING
 TOTAL PLAY AREA	26,075 SF
Intermediate Play Area	14,486 SF
Primary Play Area	4,608 SF
Pre-K & K Play Area	6,981 SF
 EAST FLEX SPACE	13,185 SF
 CORNER PLAZA	5,219 SF



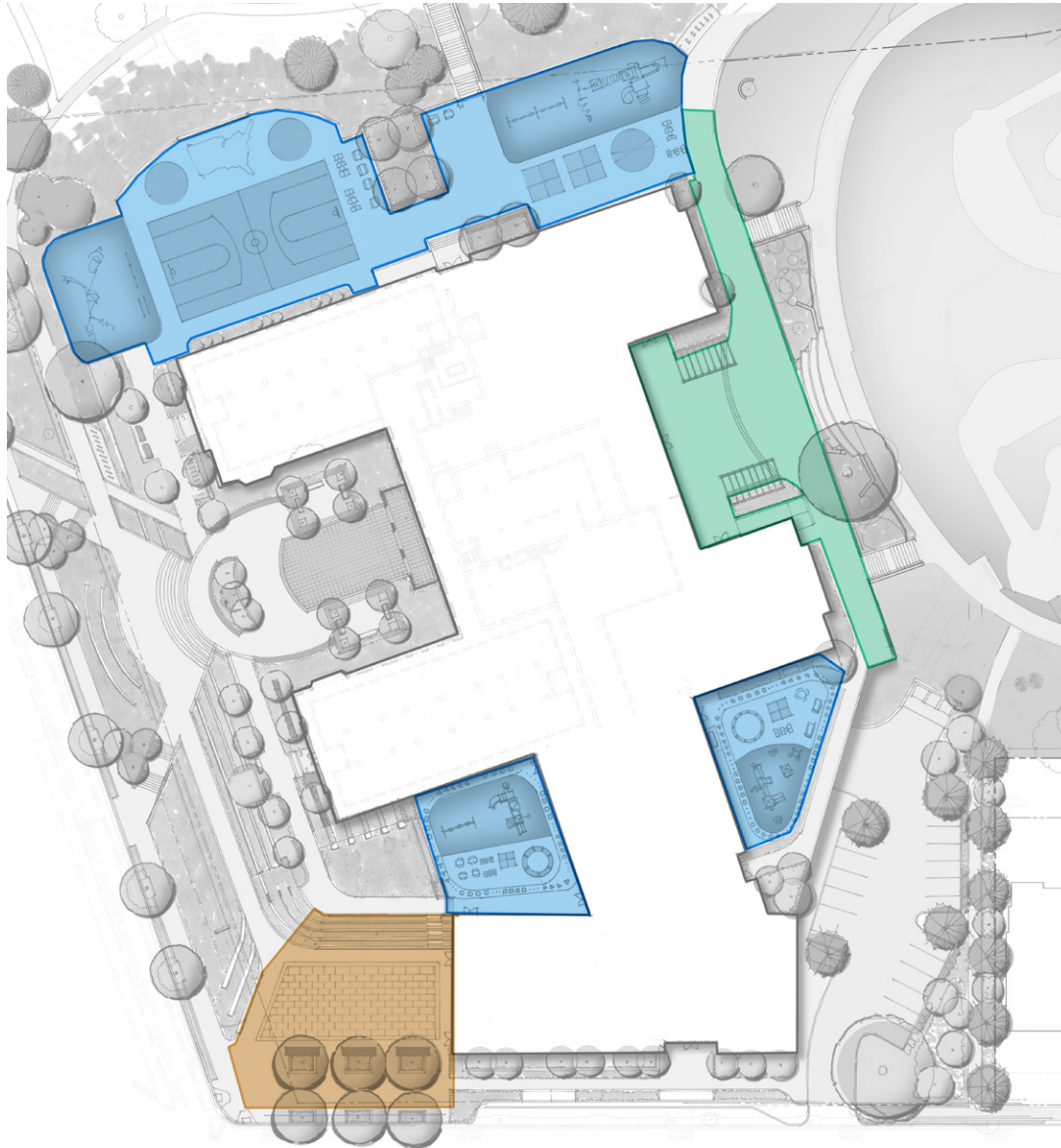
LAFAYETTE ELEMENTARY SCHOOL

LAFAYETTE ELEMENTARY SCHOOL SIT MEETING - OCTOBER 27, 2014

STUDIO39 Landscape Architecture, P.C. 6416 Grovedale Drive, Suite 100-A Alexandria, Virginia 22310 703.719.6500 www.studio39.com



LANDSCAPE CONCEPT - PROPOSED SITE OUTDOOR SPACES



	PROPOSED	EXISTING
■ TOTAL PLAY AREA	28,799 SF	26,075 SF
Intermediate Play Area	12,659 SF	
Primary Play Area	8,278 SF	
Kindergarten Play Area	4,258 SF	
Pre-K Play Area	3,604 SF	
■ EAST FLEX SPACE	7,837 SF	13,185 SF
■ CORNER PLAZA	8,023 SF	5,219 SF



LAFAYETTE ELEMENTARY SCHOOL

LAFAYETTE ELEMENTARY SCHOOL SIT MEETING - OCTOBER 27, 2014

STUDIO39 Landscape Architecture, P.C. 6416 Grovedale Drive, Suite 100-A Alexandria, Virginia 22310 703.719.6500 www.studio39.com

