

LAFAYETTE- POINTER PARK EROSION CONTROL COMMUNITY MEETING

THURSDAY, JANUARY 8
6:00 – 7:30 pm



DPR
DC DEPARTMENT OF PARKS AND RECREATION

DGS
DEPARTMENT OF
GENERAL SERVICES

**BUILD
MAINTAIN
SUSTAIN**



GOVERNMENT OF THE
DISTRICT OF COLUMBIA
MURIEL BOWSER, MAYOR

RULES OF THE ROAD

WELCOME!

THANK YOU FOR YOUR PARTICIPATION

- Please take a photo of the QR Code to sign in for our email list for this project.
- Be courteous
- Respect others
- Allow space for all to speak
- We'll do the best we can to answer all questions
- If there are any questions we cannot answer at this time, we will follow-up after this meeting



MEETING AGENDA

- 1 Introduction
- 2 Project Scope & Budget
- 3 Initial Site Assessment
- 4 Project Timeline
- 5 Contact Information
- 6 Question and Answer



DC GOV TEAM MEMBERS



BRENT SISCO
Project Manager
DPR



SHAYDA MUSAVI
Project Manager
DPR



CHRISTOPHER DYER
Community
Engagement Manager
DPR



SEAN GARGANIO
Project Manager
DGS



JOHN STOKES
External Affairs
DGS



BRITTANY HUGHES
External Affairs
DGS



DESIGN-BUILD TEAM MEMBERS



MOE FRIDY
Citadel DBD



AMAN APHRAIM
Project Manager
Citadel DBD



HYUN KIM
Project Architect
Citadel DBD



CHRISTOPHER HUSKA
Civil Engineer
Huska and Horgan



PROJECT OVERVIEW



PROJECT BUDGET

\$1,700,000.00



OBJECTIVE

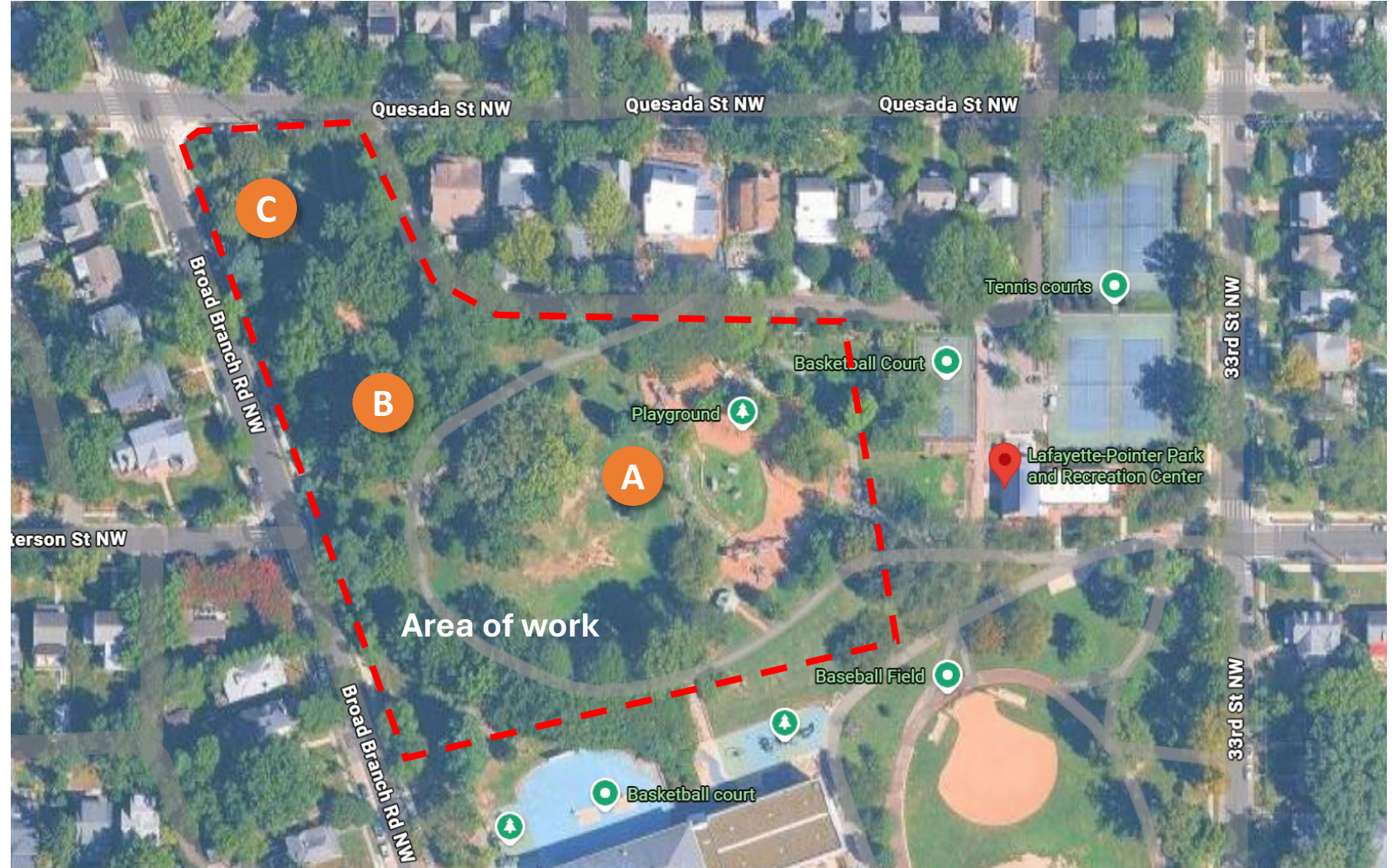
To stabilize the soil and landscaping in the park using passive and/or active stormwater management systems. Site improvements include repairing site damage caused by stormwater erosion, stabilizing the existing upper lawn, new plantings, and enhancing site access and amenities.

PROPOSED SITE FEATURES:

- New bioretention facilities and berms
- New sewer main connections
- Soil aeration and reseeded of upper lawn area
- New plantings to improve ecological health

SITE MAP – AREA OF WORK

- A** Stabilize upper lawn
- B** Repair area from stormwater erosion
- C** Lowest elevation of park

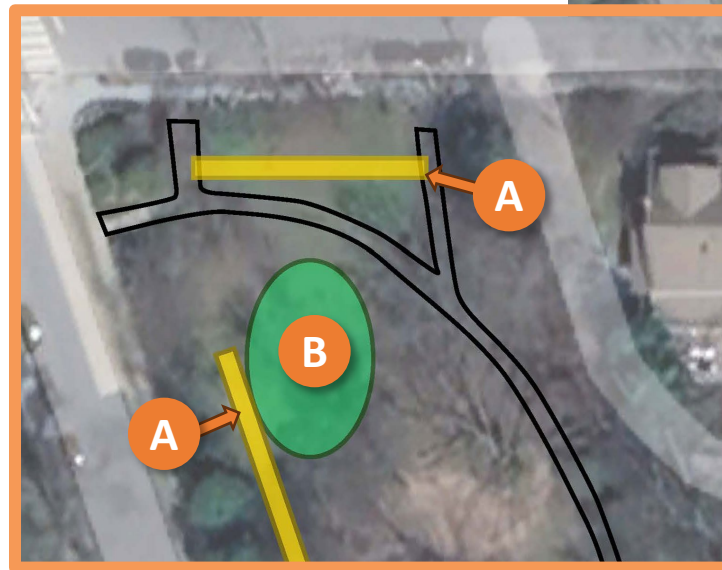


* All plans and pictures shown are for illustration purposes only. The final built product may vary due to budget, design refinements, regulatory requirements, construction limitations, or other considerations.

INITIAL SITE ASSESSMENT

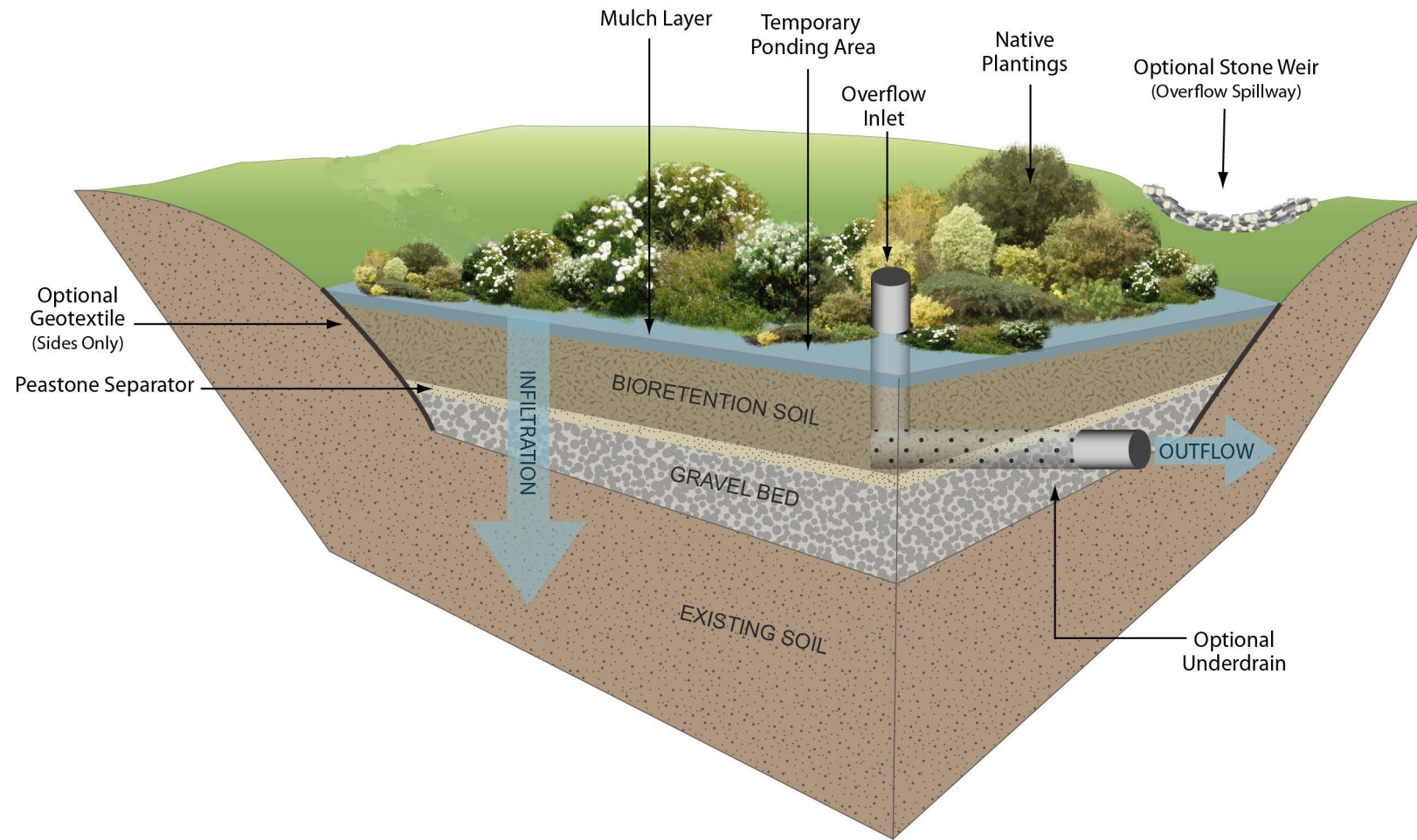
- A** Soil berm
- B** Bioretention facility. New planting in and around facility.
- C** Remove stones and add dirt. New shade tolerant plants.
- D** Soil aeration and reseed field
- E** Resurface damaged existing pathways with new layer of asphalt

ENLARGED PLAN



* All plans and pictures shown are for illustration purposes only. The final built product may vary due to budget, design refinements, regulatory requirements, construction limitations, or other considerations.

BIORETENTION FACILITY DIAGRAM



PLANTING PRECEDENT IMAGES

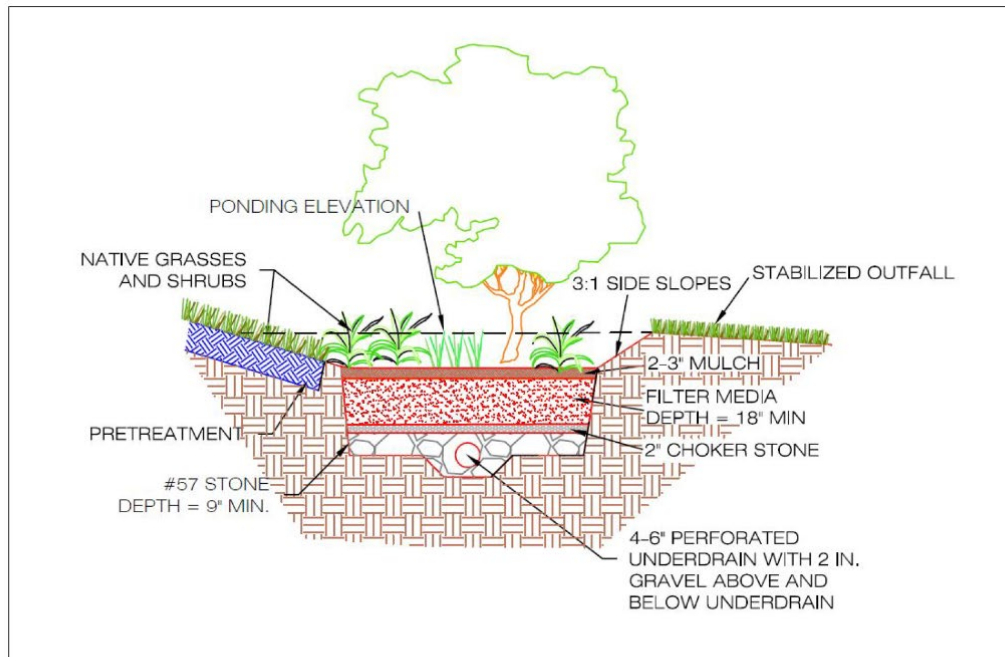


Figure 3.17 Example of standard bioretention design.



IMAGE OF BIORETENTION FACILITY

TREE PROTECTION AND TREATMENT



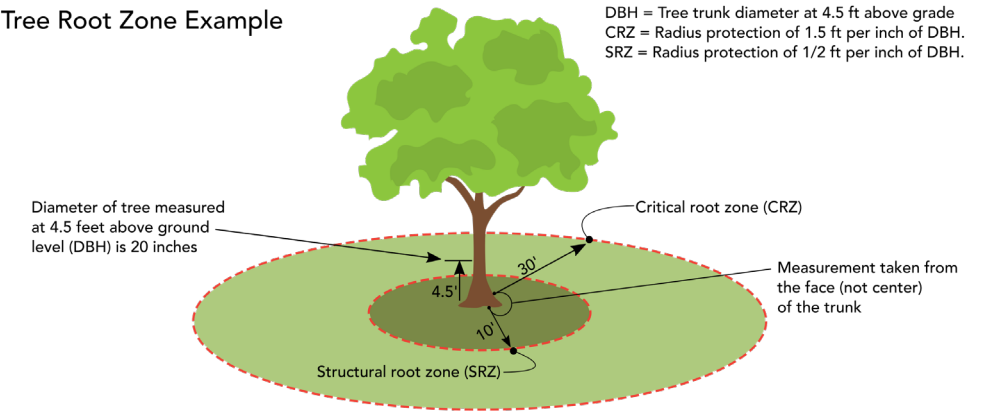
Special Trees
CIRCUMFERENCE = 44" - 99.9"

Special trees are trees on private land with a circumference between 44 inches and 99.9 inches. Permits may be issued if the tree is Hazardous, if the tree is of a species that is appropriate for removal or if a permit is purchased. A permit costs \$55 for each inch of circumference. Removing a Special tree without a permit will result in a fine of \$300 per inch of circumference in addition to the cost of the permit.

Heritage Trees
CIRCUMFERENCE = 100"

Heritage trees may not be cut down unless they are determined to be hazardous or are a species that has been identified as appropriate for removal. Removal of a Heritage tree outside those parameters can only be done with a mayoral decree. Removing a Heritage tree without one of these determinations will lead to a fine of no less than \$300 per inch of the circumference.

Tree Root Zone Example

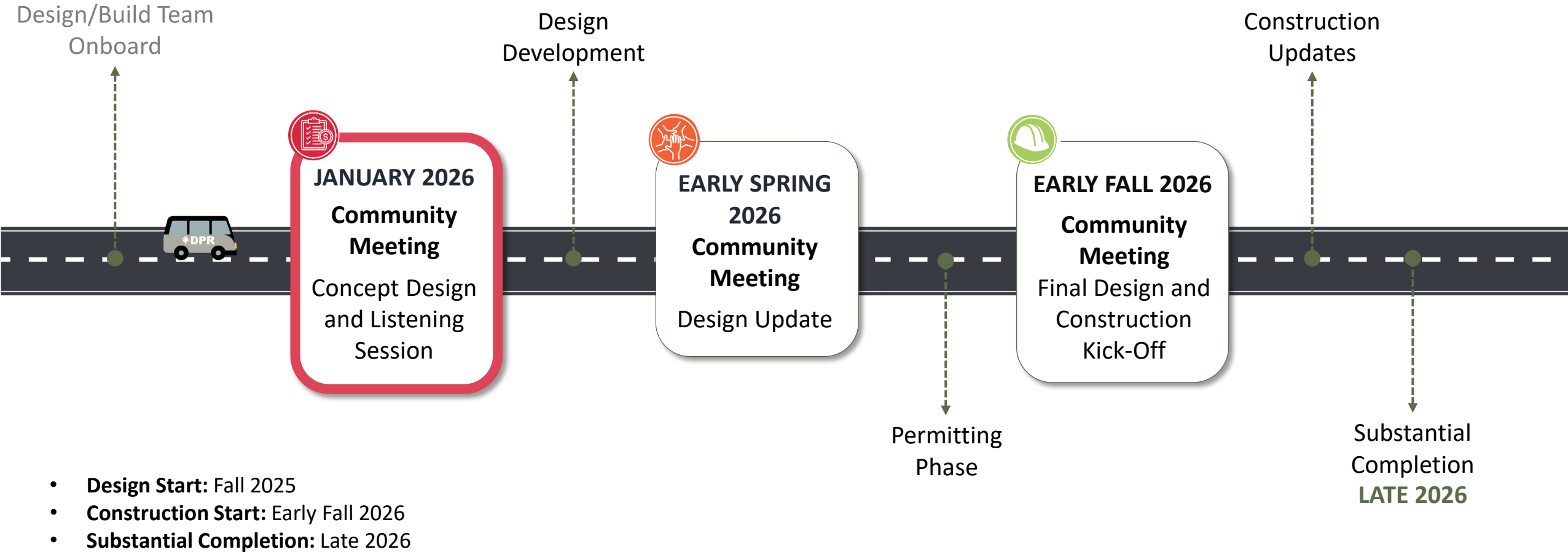


District Department of Transportation
Urban Forestry Division

trees.dc.gov

d.

PROJECT MILESTONE TIMELINE



NEXT STEPS



This presentation will be uploaded on the project website. Please feel free to contact DPR/DGS with any additional feedback.



Design-Build Team will review community feedback and make appropriate changes to the plans.



DPR will schedule a second community meeting to present updated designs and receive final feedback before submitting drawings for construction permits.

CONTACT INFORMATION

DEPARTMENT OF PARKS & RECREATION (DPR)

Christopher Dyer | Community Engagement and Outreach

christopher.dyer@dc.gov

DEPARTMENT OF GENERAL SERVICES (DGS)

Brittany Hughes | Community Engagement and Outreach

brittany.hughes@dc.gov

PROJECT WEBSITE:

<https://dgs.dc.gov/page/lafayette-pointer-park-erosion-control>

JOIN OUR EMAIL LIST



Email List Sign-in
[DPR.DC.GOV/ATTENDEE](https://dpr.dc.gov/attendeec)



THANK YOU

QUESTIONS?