



Wednesday, October 23, 2019



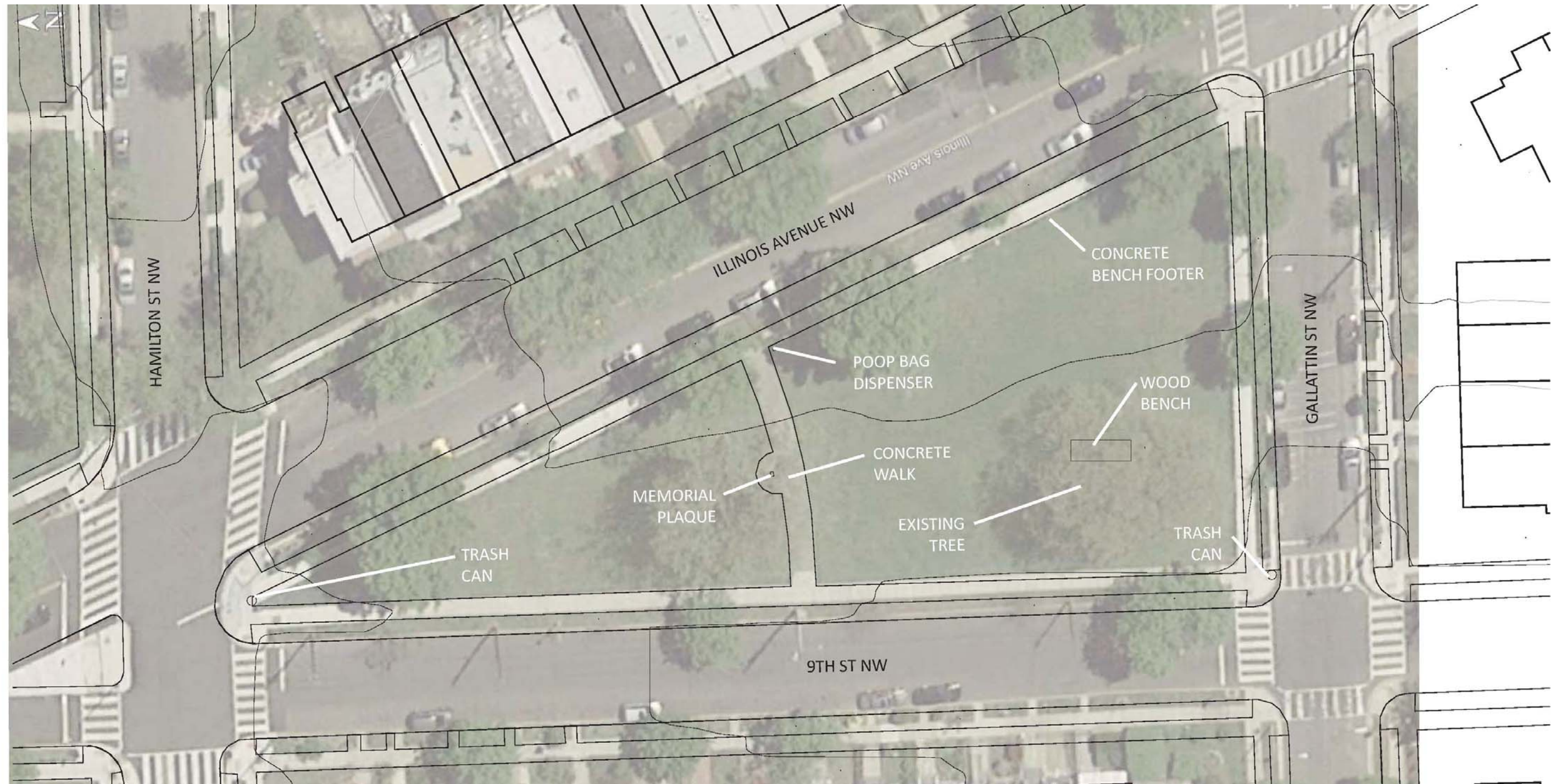
# Rules of the Road:

Welcome! Thank you for your participation.

- Please Hold all questions until the end of the presentation.
- Sign-In Before you leave.

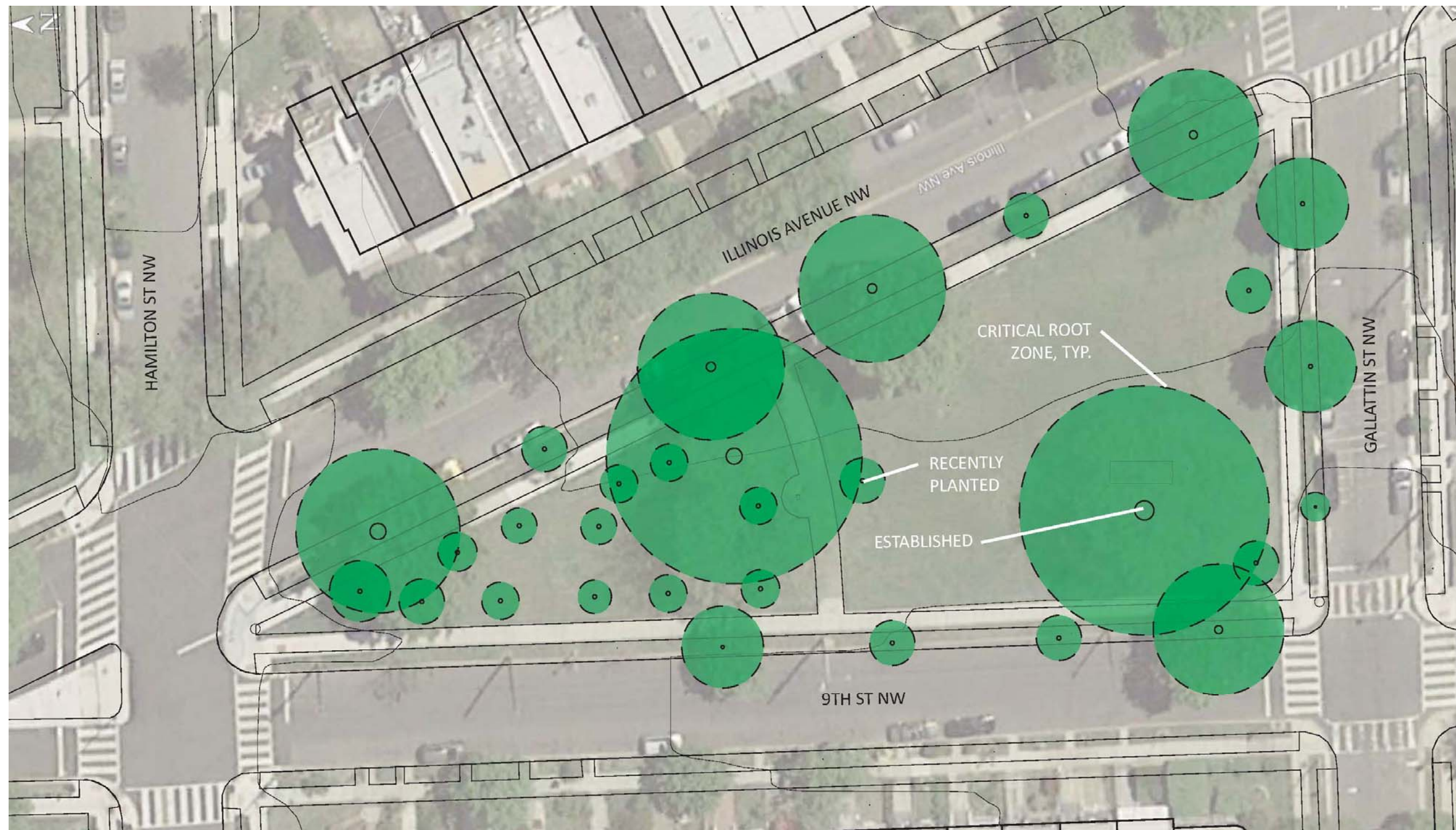
## Agenda:

1. Introduction
2. Project Overview and Opportunities
3. Project Process and Timeline
4. Plans: Existing, Proposed, Playgrounds & Amenities
5. Community Feedback
6. Next Steps
7. Contact Information



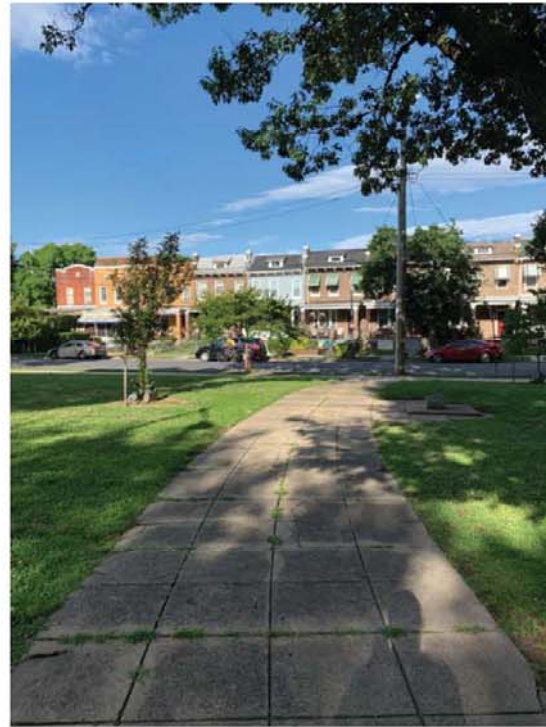
## EXISTING CONDITIONS





## EXISTING TREES



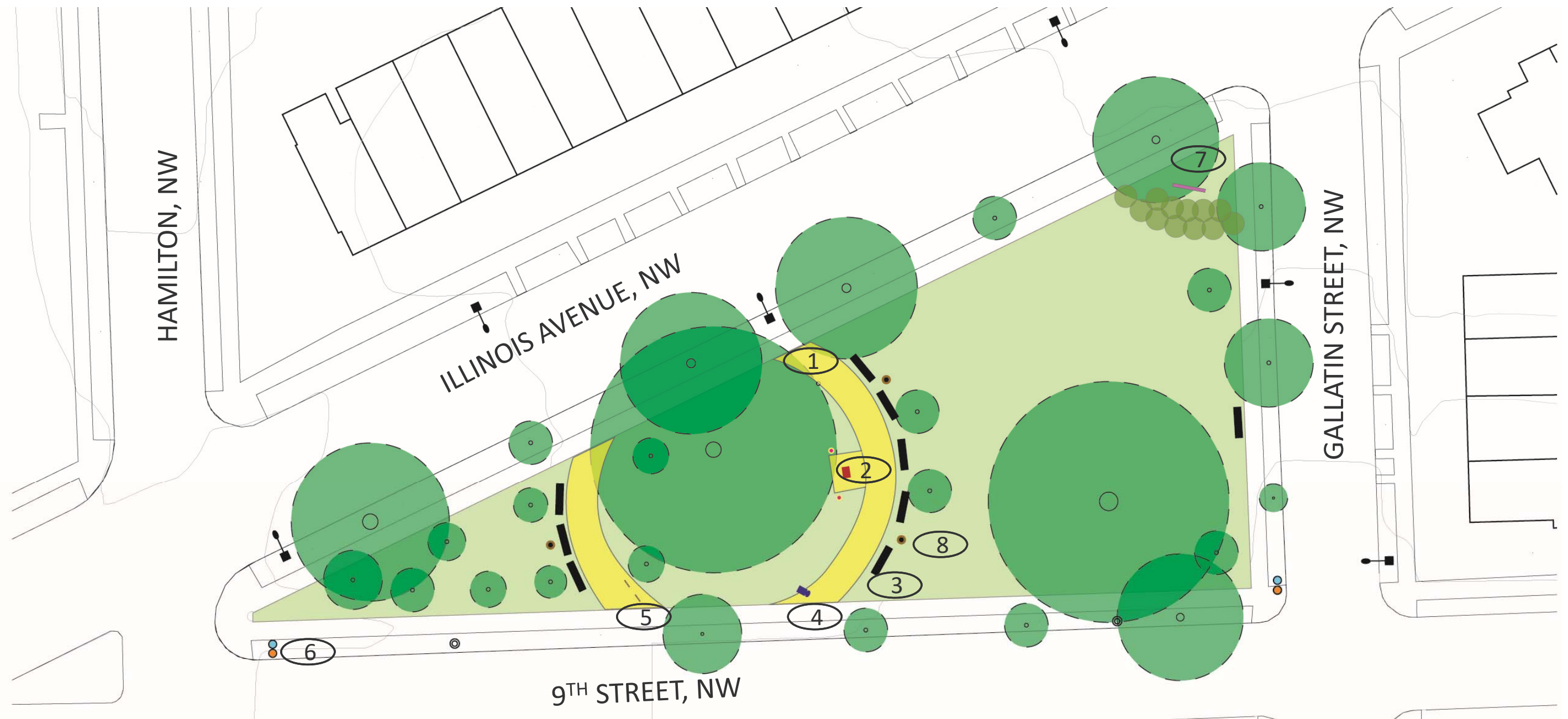


## EXISTING PHOTOS





## COMMUNITY CONCEPT

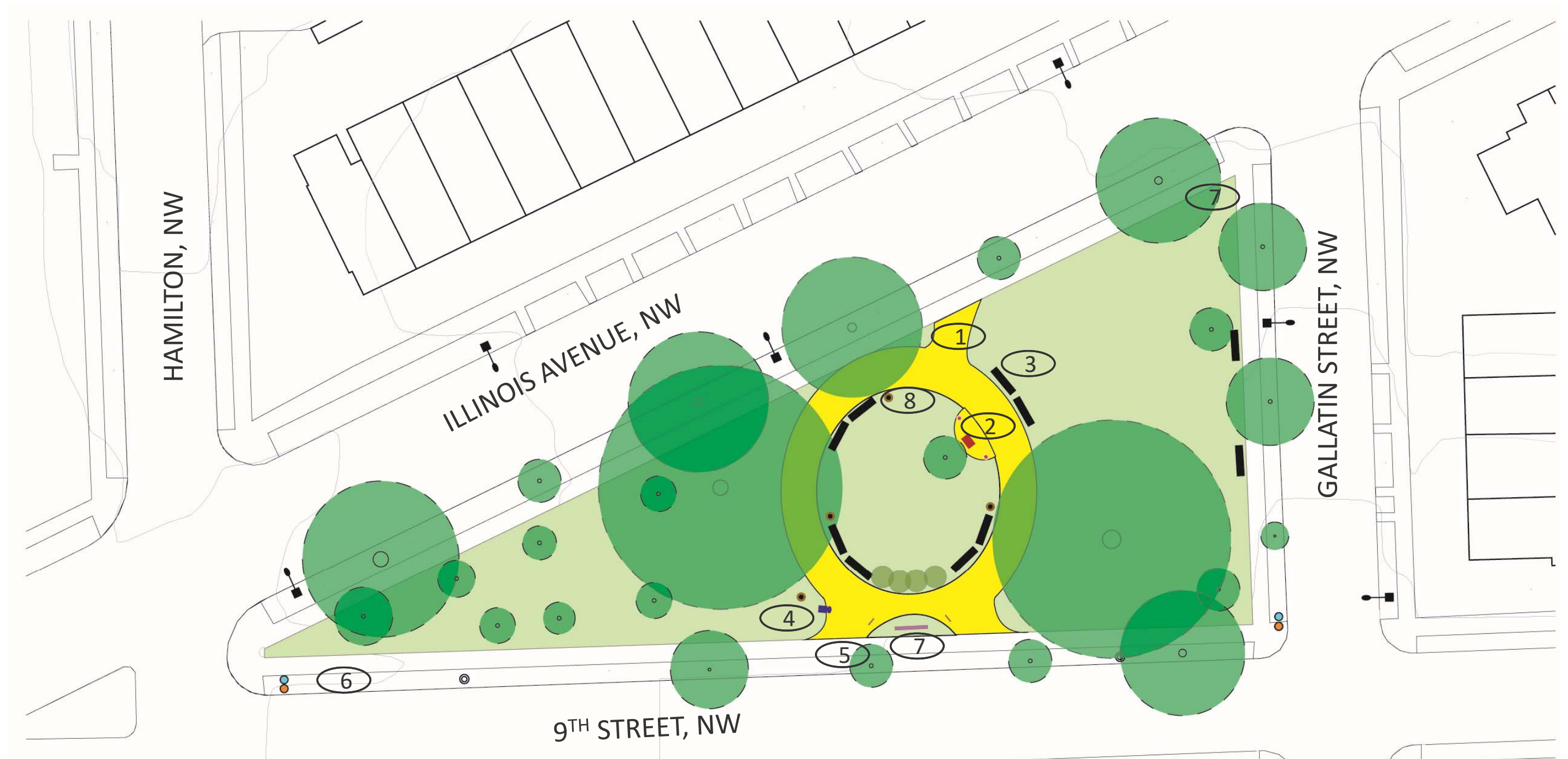


# OPTION 1

- ① HARDSCAPE
- ② MEMORIAL PLAQUE
- ③ BENCH
- ④ DRINKING FOUNTAIN
- ⑤ BIKE RACK
- ⑥ TRASH RECEPTACLE
- ⑦ ENTRY SIGN
- ⑧ NEW LIGHT FIXTURE

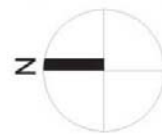






## OPTION 2

- |                     |                     |
|---------------------|---------------------|
| ① HARDSCAPE         | ⑤ BIKE RACK         |
| ② MEMORIAL PLAQUE   | ⑥ TRASH RECEPTACLE  |
| ③ BENCH             | ⑦ ENTRY SIGN        |
| ④ DRINKING FOUNTAIN | ⑧ NEW LIGHT FIXTURE |



**lai** leeandassociates inc  
landscape architecture • urban design • planning  
green infrastructure • sustainable cities

**DGS**  
DEPARTMENT OF  
GENERAL SERVICES

**BUILD\*\*  
MAINTAIN  
SUSTAIN**



**DPR**  
DC DEPARTMENT OF PARKS AND RECREATION

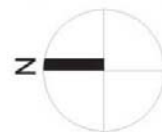
WE ARE  
WASHINGTON  
DC





## OPTION 3

- |                     |                     |
|---------------------|---------------------|
| ① HARDSCAPE         | ⑤ BIKE RACK         |
| ② MEMORIAL PLAQUE   | ⑥ TRASH RECEPTACLE  |
| ③ BENCH             | ⑦ ENTRY SIGN        |
| ④ DRINKING FOUNTAIN | ⑧ NEW LIGHT FIXTURE |



**lai** leeandassociates inc  
 landscape architecture • urban design • planning  
 green infrastructure • sustainable cities

**DGS** DEPARTMENT OF  
 GENERAL SERVICES  
**BUILD\*\*  
 MAINTAIN  
 SUSTAIN**

**DPR**  
 DC DEPARTMENT OF PARKS AND RECREATION

WE ARE  
 WASHINGTON  
**DC**



## OPTION 4



- |                     |                     |
|---------------------|---------------------|
| ① HARDSCAPE         | ⑤ BIKE RACK         |
| ② MEMORIAL PLAQUE   | ⑥ TRASH RECEPTACLE  |
| ③ BENCH             | ⑦ ENTRY SIGN        |
| ④ DRINKING FOUNTAIN | ⑧ NEW LIGHT FIXTURE |



**lai** leeandassociates inc  
landscape architecture • urban design • planning  
green infrastructure • sustainable cities

**DGS** DEPARTMENT OF  
GENERAL SERVICES

**BUILD  
MAINTAIN  
SUSTAIN**

**DPR** DC DEPARTMENT OF PARKS AND RECREATION

WE ARE  
WASHINGTON  
DC



## OPTION 5



- |                     |                     |
|---------------------|---------------------|
| ① HARDSCAPE         | ⑤ BIKE RACK         |
| ② MEMORIAL PLAQUE   | ⑥ TRASH RECEPTACLE  |
| ③ BENCH             | ⑦ ENTRY SIGN        |
| ④ DRINKING FOUNTAIN | ⑧ NEW LIGHT FIXTURE |



**lai** leeandassociates inc  
landscape architecture • urban design • planning  
green infrastructure • sustainable cities

**DGS**  
DEPARTMENT OF  
GENERAL SERVICES

**BUILD**  
**MAINTAIN**  
**SUSTAIN**



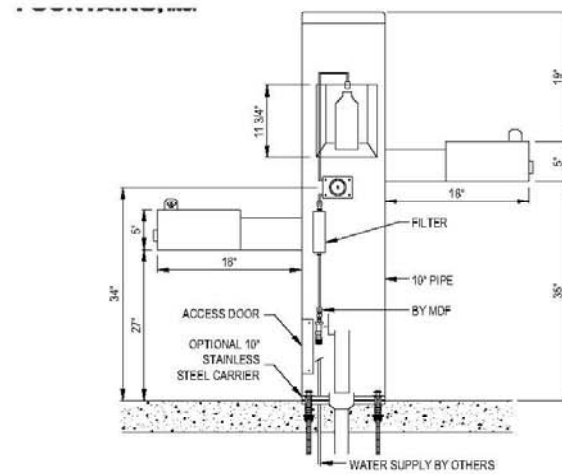
**DPR**  
DC DEPARTMENT OF PARKS AND RECREATION

**WE ARE**  
**WASHINGTON**  
**DC**





5 BIKE RACK W/ PARK EMBLEM



4 DRINKING FOUNTAIN



3 BENCH W/ BACK AND CENTER ARMREST



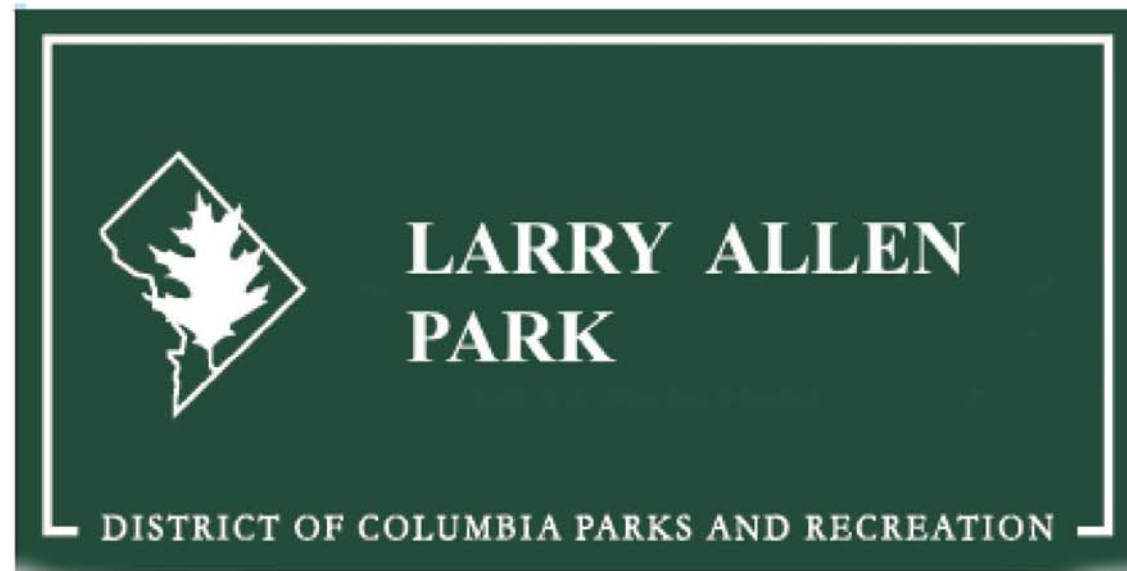
2 SEATWALL/MEMORIAL PLAQUE



6 TRASH RECEPTACLE







7 PARK SIGN



8 POLE LIGHT FIXTURE OPTIONS



# NEXT STEPS:

- HIRE A CONTRACTOR
- FINALIZE THE PERMITTING PROCESS



## Contact Information

### Department of General Services (DGS)

Wayne Gore, Community Engagement and Outreach

[wayne.gore@dc.gov](mailto:wayne.gore@dc.gov)

### Department of Parks & Recreation (DPR)

Peter Nohrden, ASLA / Project Manager

[peter.nohrden@dc.gov](mailto:peter.nohrden@dc.gov)

