

Lorenzo Larry Allen Commemorative Park : Community Meeting



Wednesday, December 11,
2019

Rules of the Road:

Welcome! Thank you for your participation.

- Please Hold all questions until the end of the presentation.
- Sign-In Before you leave.

Agenda:

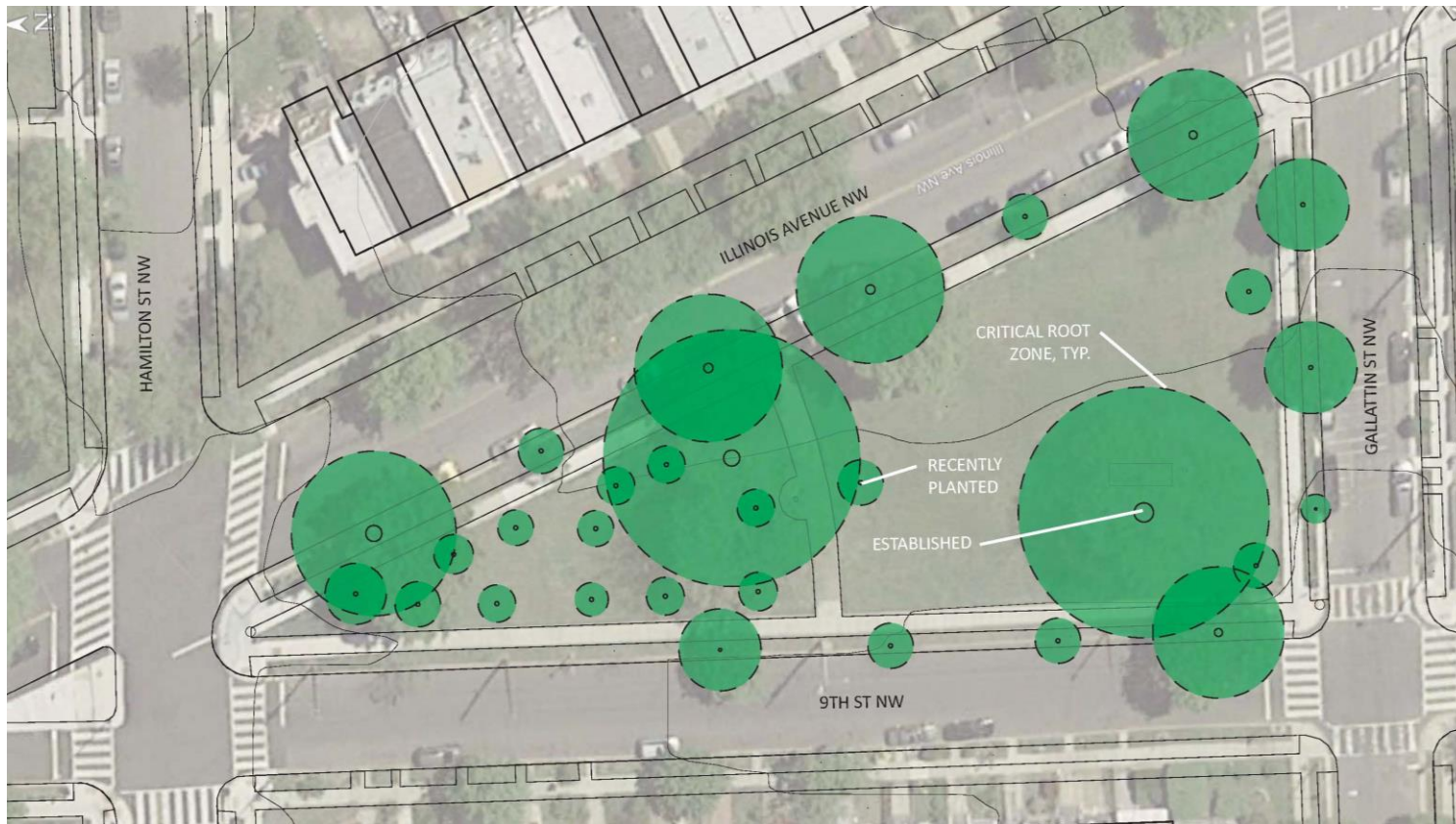
1. Introduction
2. Project Overview and Opportunities
3. Project Process and Timeline
4. Plans: Existing, Proposed, Playgrounds & Amenities
5. Next Steps
6. Contact Information
7. Community Feedback



EXISTING PHOTOS



EXISTING CONDITIONS



EXISTING TREES

OPTION 4



- | | |
|---------------------|---------------------|
| ① HARDSCAPE | ⑤ BIKE RACK |
| ② MEMORIAL PLAQUE | ⑥ TRASH RECEPTACLE |
| ③ BENCH | ⑦ ENTRY SIGN |
| ④ DRINKING FOUNTAIN | ⑧ NEW LIGHT FIXTURE |





9TH ST NW

ILLINOIS AVENUE NW

GALLATIN ST NW

- | | |
|------------------------|------------------------------|
| ① CONCRETE PAVING | ⑥ TRASH RECEPTACLE |
| ② MEMORIAL PLAQUE/WALL | ⑦ ENTRY SIGN |
| ③ BENCH | ⑧ NEW LIGHT FIXTURE |
| ④ DRINKING FOUNTAIN | ⑨ SPECIAL CONCRETE PAVERS |
| ⑤ BIKE RACK | ⑩ COMMUNITY PERENNIAL GARDEN |



0 15 30 60 FT
1"=30'-0"

VERSION A



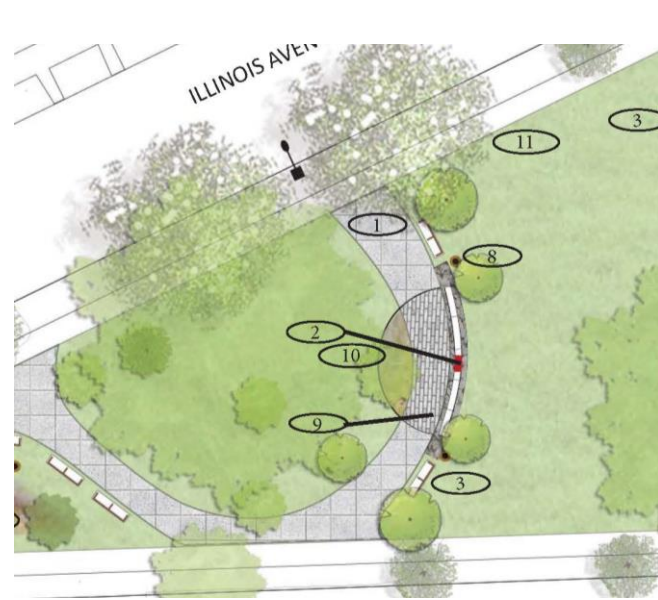
9TH ST NW

- | | |
|------------------------|------------------------------|
| ① CONCRETE PAVING | ⑥ TRASH RECEPTACLE |
| ② MEMORIAL PLAQUE/WALL | ⑦ ENTRY SIGN |
| ③ BENCH | ⑧ NEW LIGHT FIXTURE |
| ④ DRINKING FOUNTAIN | ⑨ SPECIAL CONCRETE PAVERS |
| ⑤ BIKE RACK | ⑩ COMMUNITY PERENNIAL GARDEN |



0 15 30 60 FT
1"=30'-0"

VERSION B



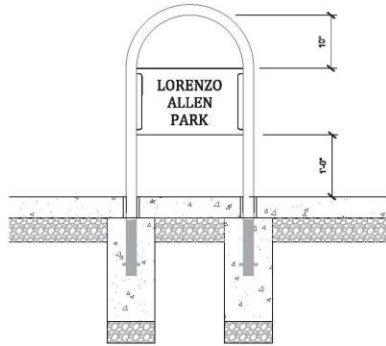
OPTION A



OPTION B



TOM PANEL

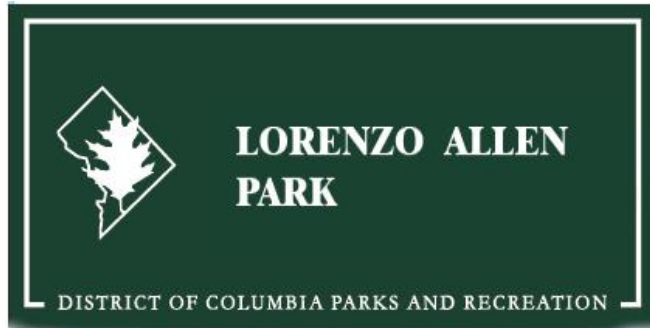


5 BIKE RACK W/ PARK EMBLEM 4 DRINKING FOUNTAIN

3 BENCH W/ BACK AND CENTER ARMREST



6 TRASH RECEPTACLE WITH DOME LIDS



7 PARK SIGN



8 POLE LIGHT FIXTURE OPTIONS

NEXT STEPS:

- HIRE A CONTRACTOR
- FINALIZE THE PERMITTING PROCESS

Contact Information

Department of General Services (DGS)

Wayne Gore, Community Engagement and Outreach

wayne.gore@dc.gov

Department of Parks & Recreation (DPR)

Peter Nohrden, ASLA / Project Manager

peter.nohrden@dc.gov