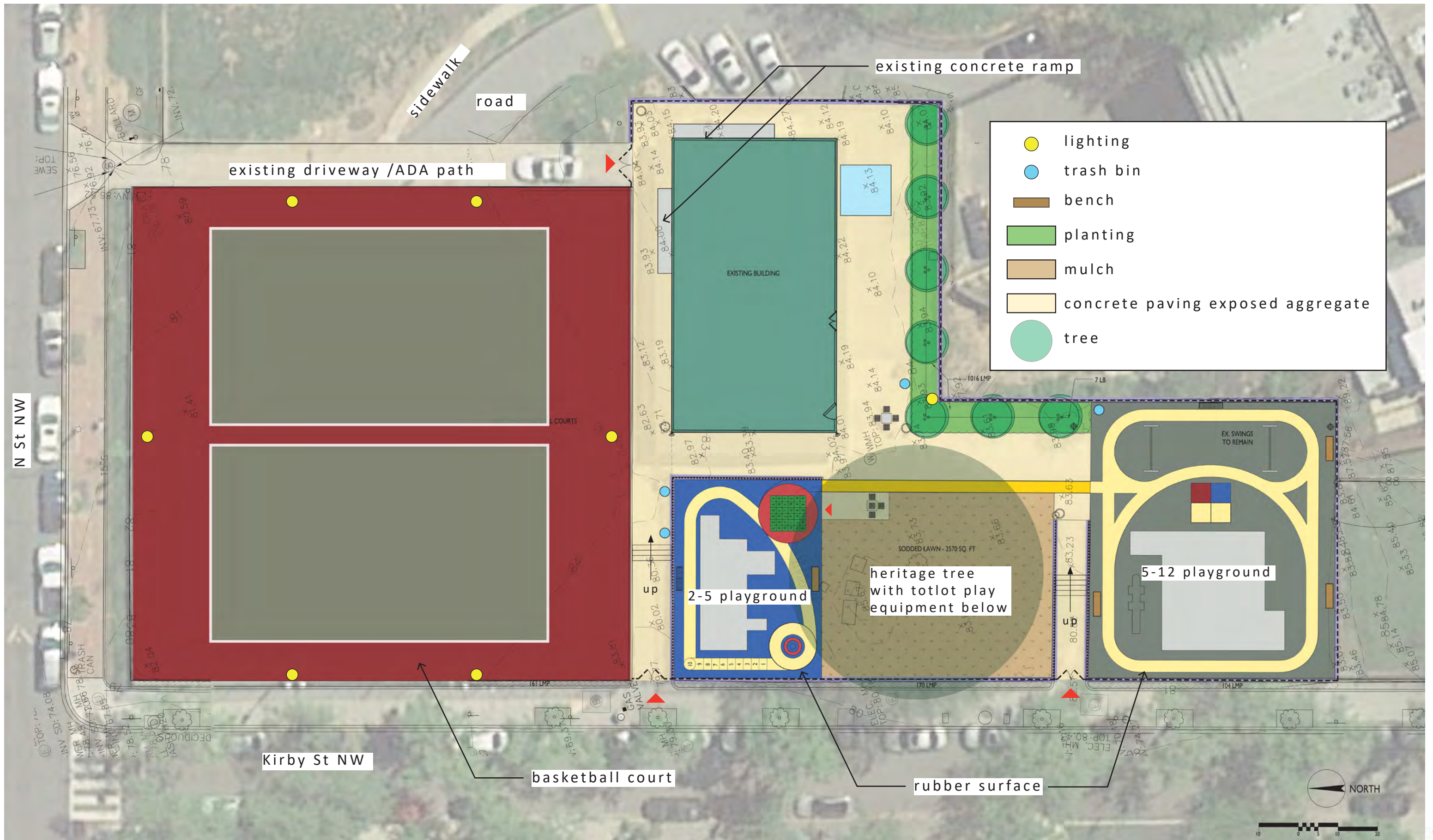


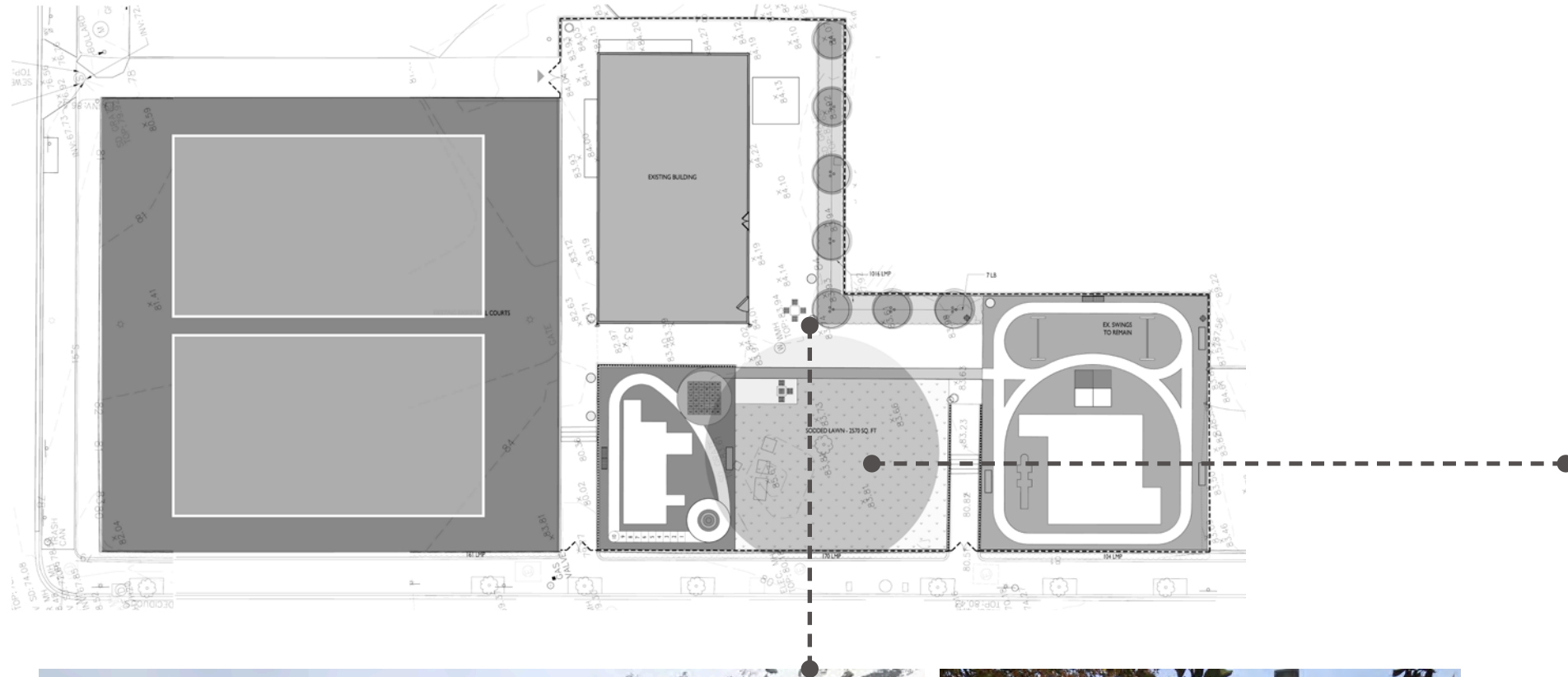
NEW YORK AVE PLAYGROUND - FINAL DESIGN



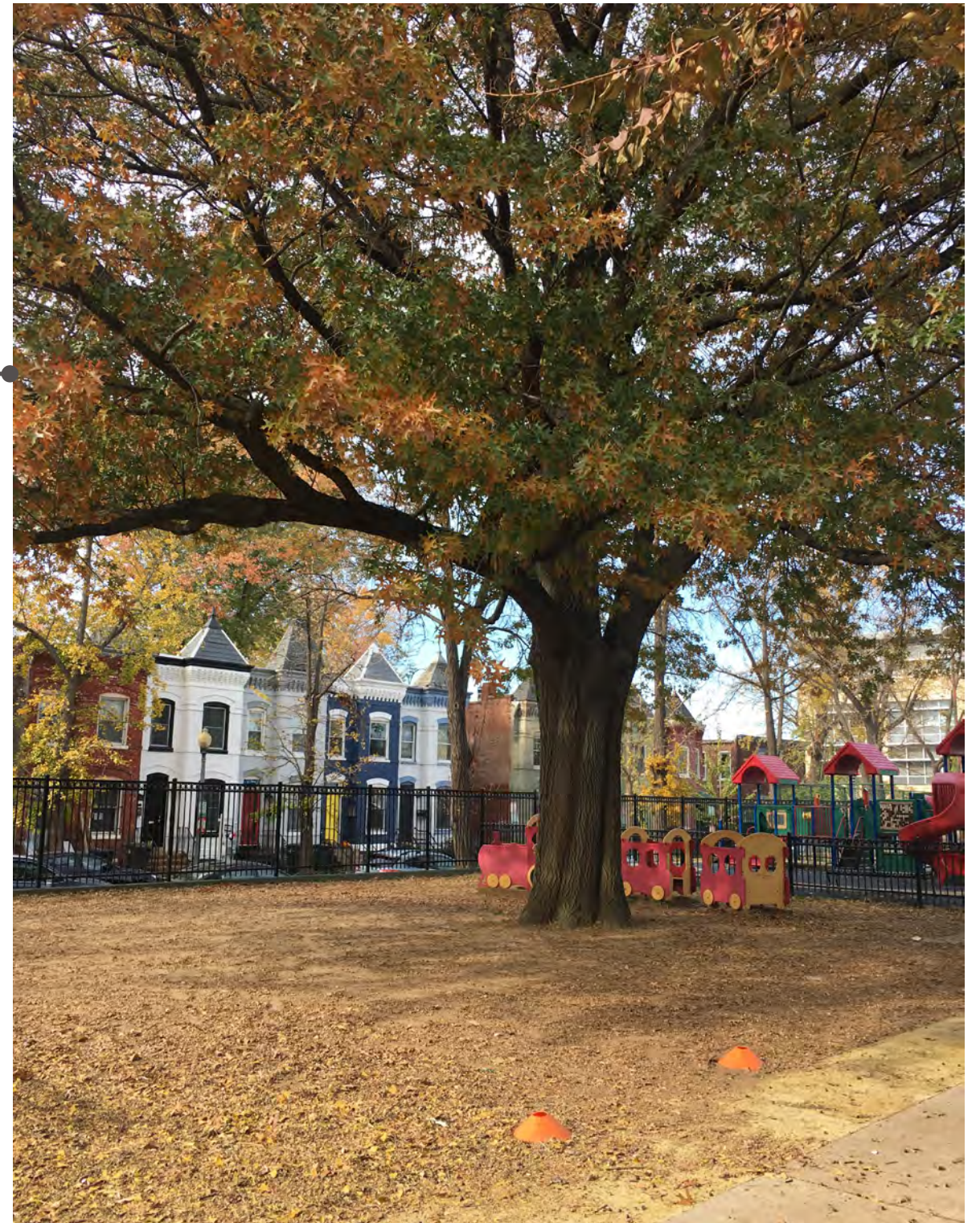
DC DEPARTMENT OF PARKS AND RECREATION





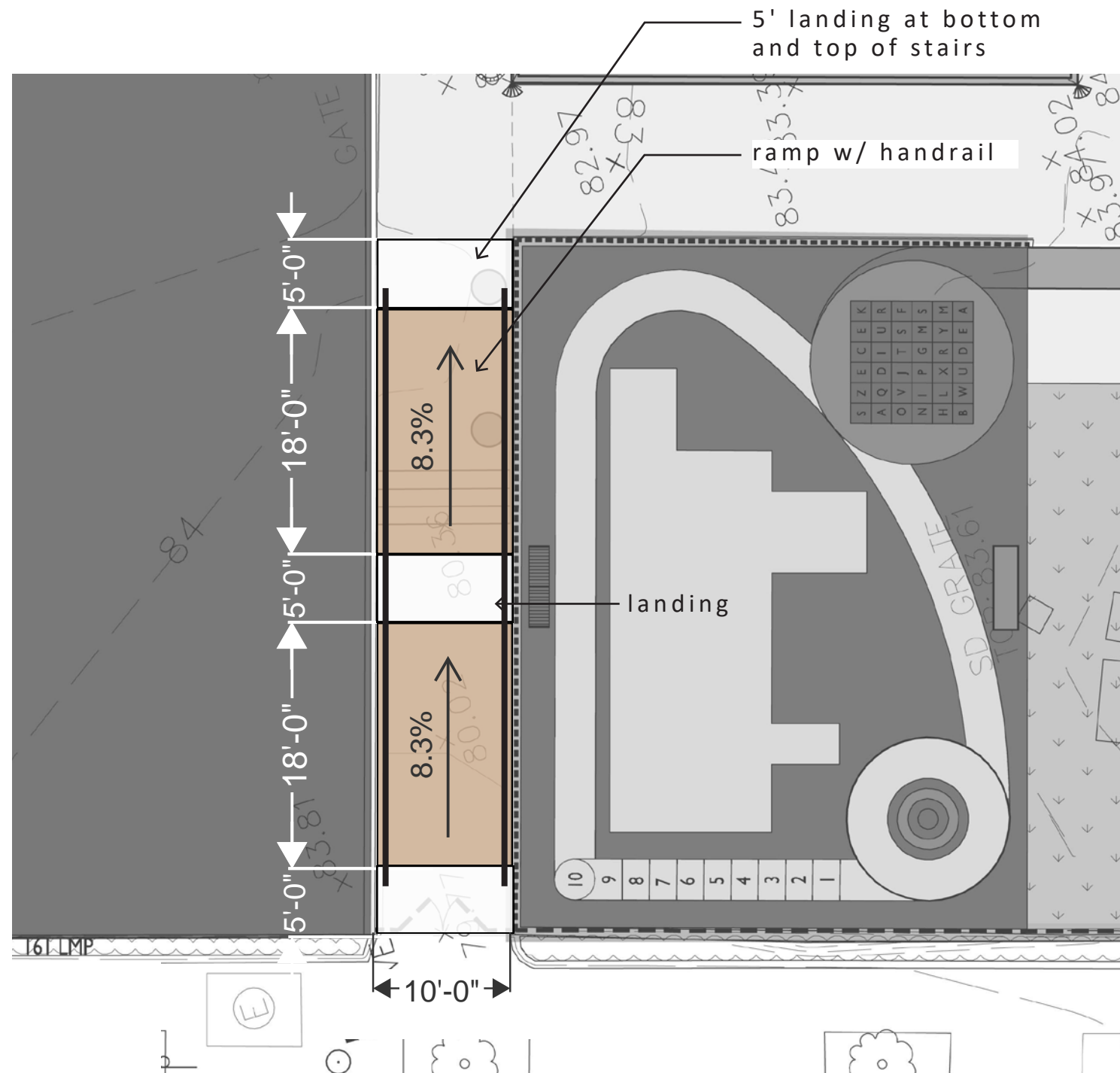
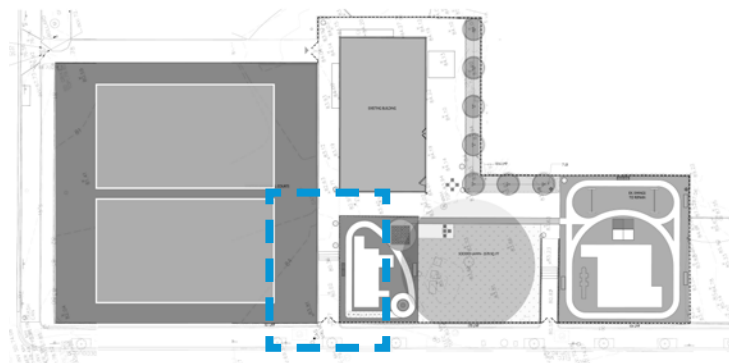


mulch and weeding needed



large tree to be preserved, root zone to be evaluated for aeration

SITE ACCESSIBILITY





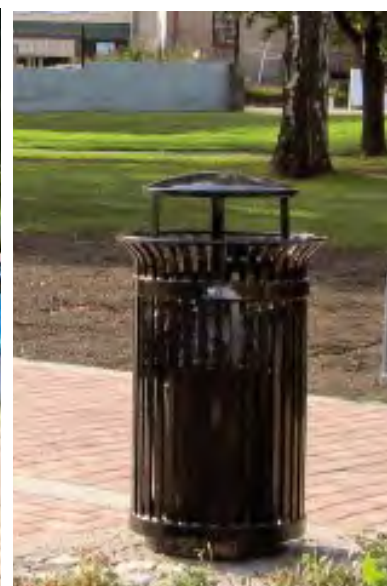
drinking fountain



bike racks



bench

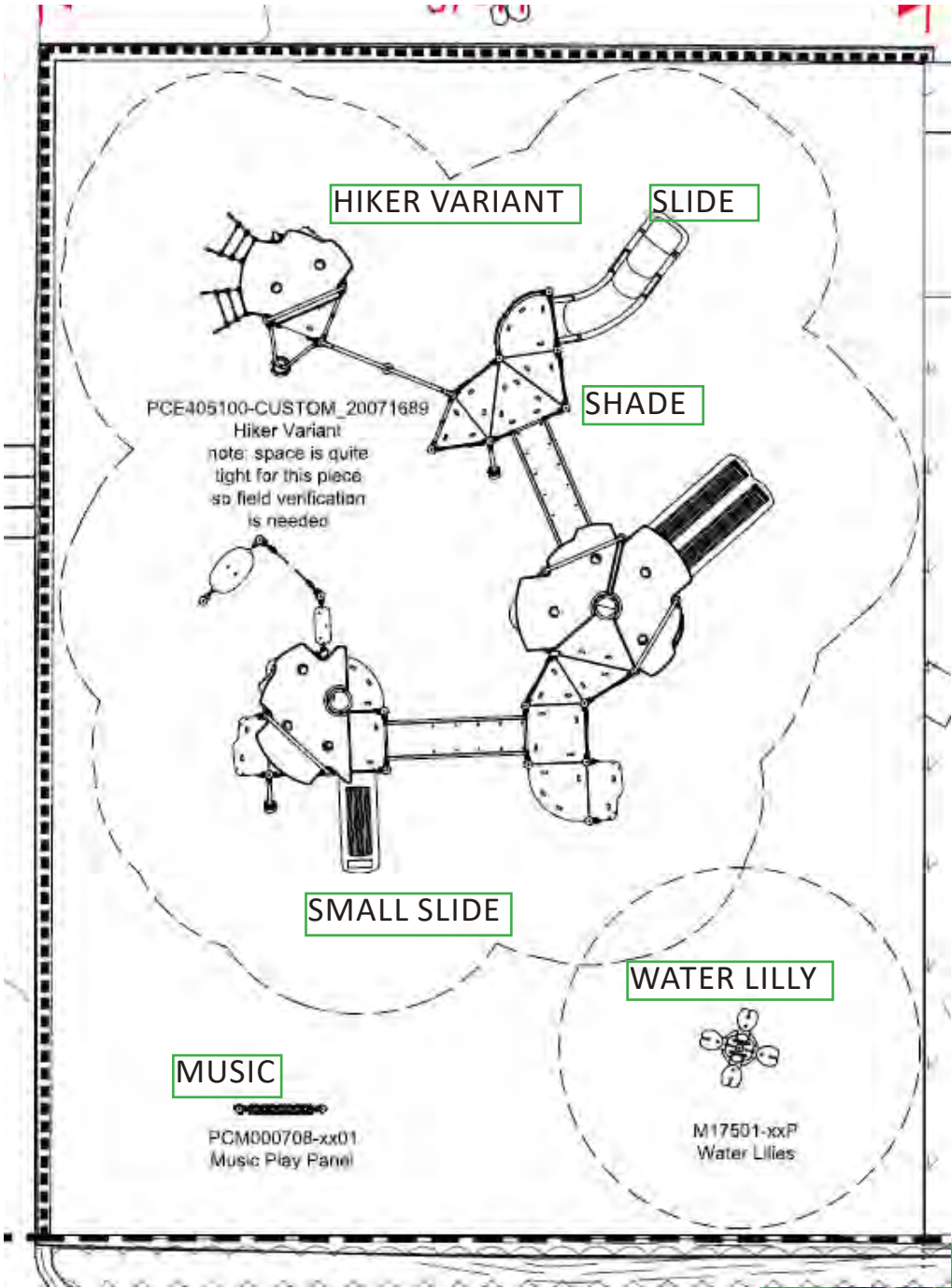


trash & recycling receptacle



park signs

PLAYGROUND LAYOUT OPTIONS



New York Avenue Park 2-5

